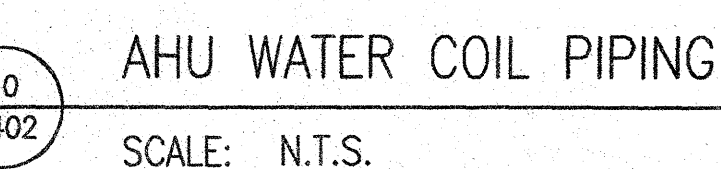
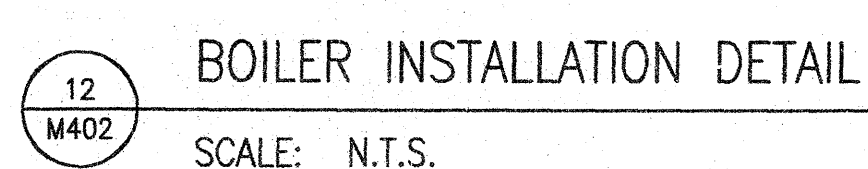
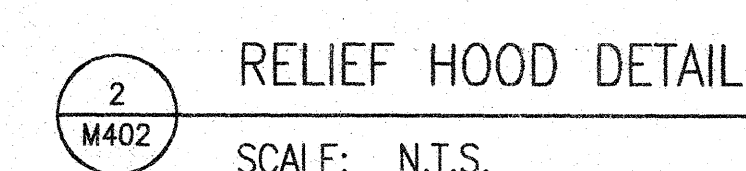
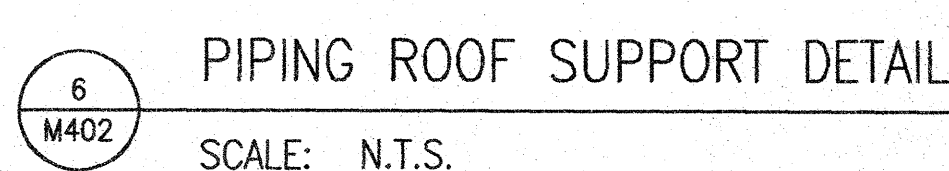
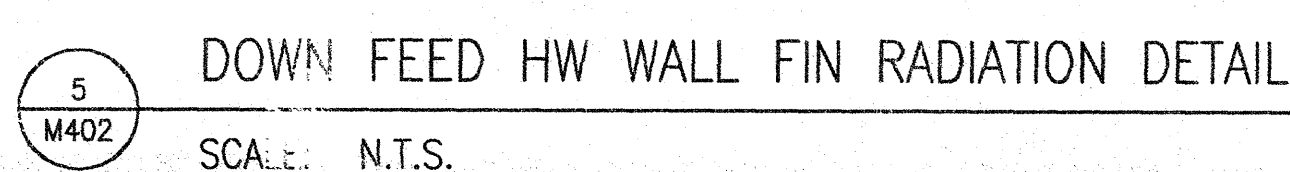
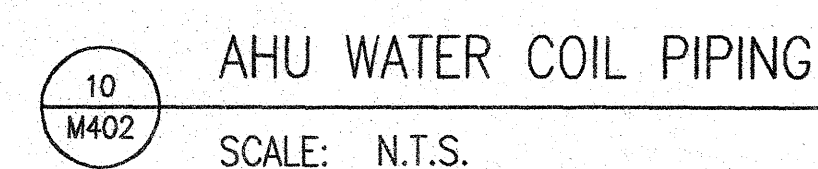
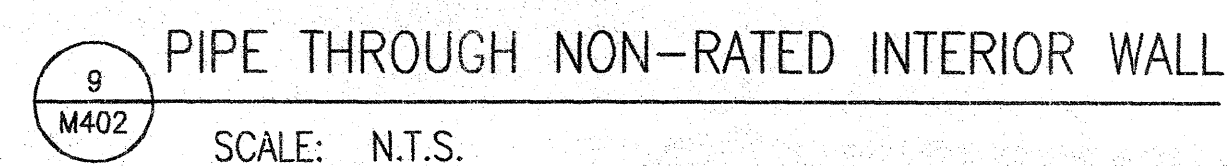
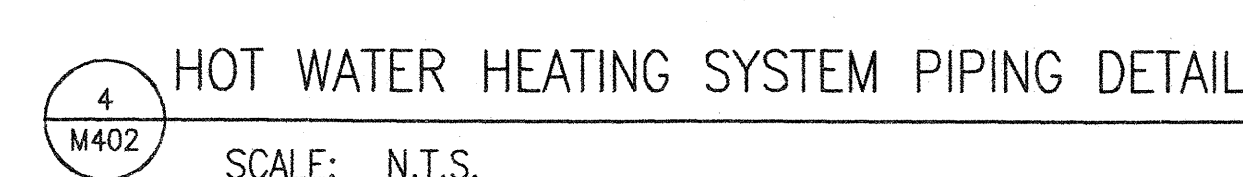
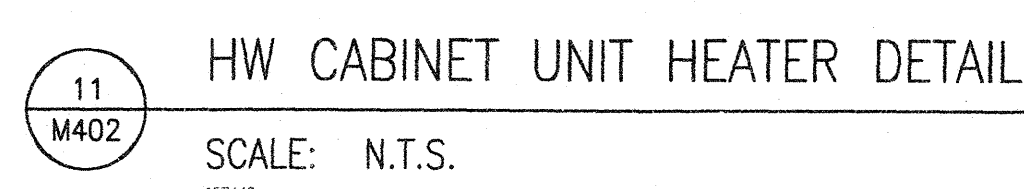
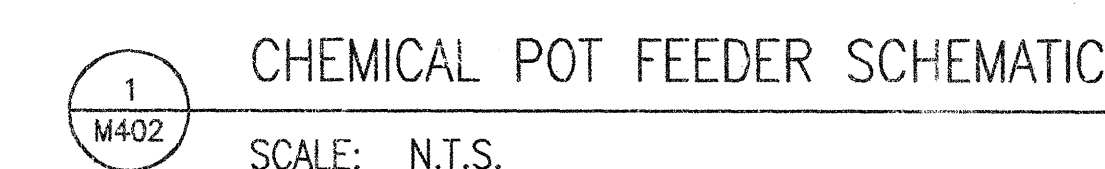
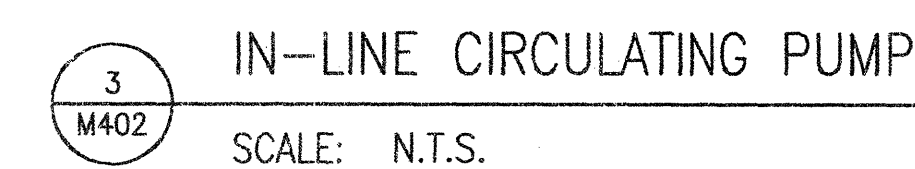
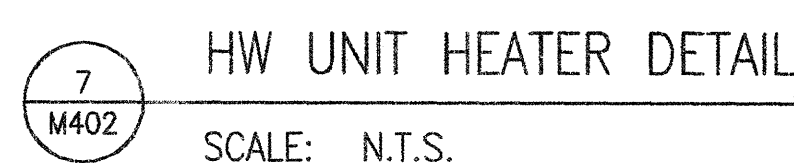




STRANG INC.  
6411 MINERAL POINT ROAD  
MADISON, WI 53705-4395  
T/ 608 278 9200  
F/ 608 278 9204



DRAWN	NJZ
CHECKED	BK
DATE	03-09-12
PROJECT NO.	2011009
PROJECT TITLE	

421 GRAND CANYON DRIVE  
MADISON, WISCONSIN

SHEET NO.  
**M402**