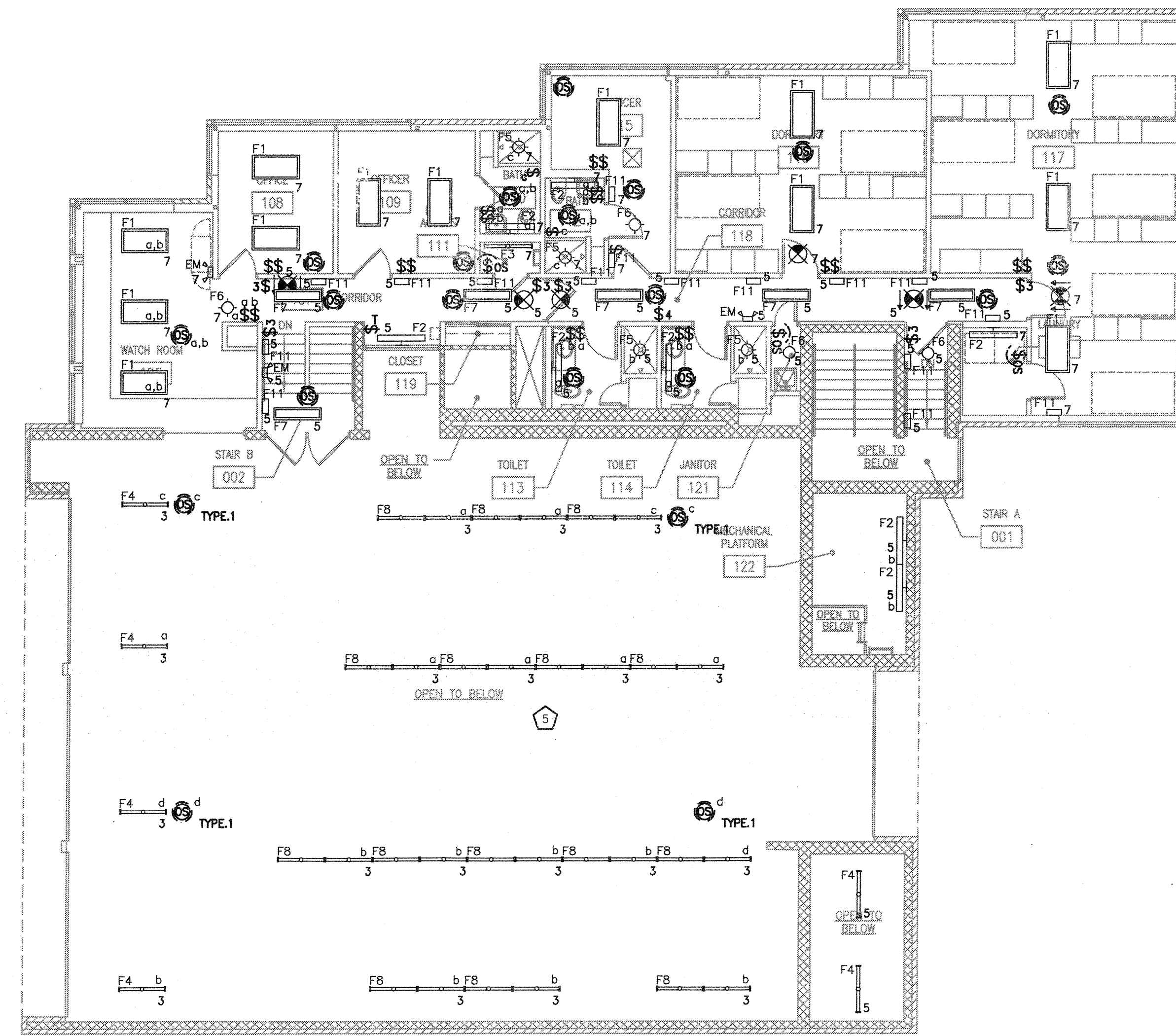


N
1
E201L
LOWER LEVEL LIGHTING ADDITION AND REMODELING PLAN
SCALE: 1/8" = 1'-0"



N
2
E201L
UPPER LEVEL LIGHTING ADDITION AND REMODELING PLAN
SCALE: 1/8" = 1'-0"

GENERAL NOTES

- SEE SHEET E001 FOR SYMBOLS, ABBREVIATIONS AND LIGHTING FIXTURE SCHEDULE.
- REFER TO SHEET E401 FOR OCCUPANCY SENSOR WIRING DIAGRAMS AND SPECIFIC INFORMATION FOR LIGHTING CONTROLS.
- ALL LIGHTING TO BE CIRCUITED FROM PANEL A-1 LOCATED IN MECHANICAL ROOM B2.

SPECIFIC NOTES

- TYPE F1 FIXTURES IN ROOM B1 TO BE EQUIPPED WITH DIMMING BALLASTS.
- LOCATE TYPE F4 FIXTURES TO SUIT MECHANICAL EQUIPMENT, DUCTWORKS, PIPING, ETC.
- REPLACE EXISTING FIXTURE WITH NEW FIXTURE DESIGNATED. REUSE EXISTING BRANCH CIRCUIT. CONTROL FROM NEW TIME CLOCK.
- SEE SITE PLAN FOR EXACT LOCATION OF EXISTING PARKING LOT FIXTURES. REPLACE WITH NEW FIXTURE TYPE F9 AS INDICATED ON DRAWING. SEE SHEET E001 FOR FIXTURE SCHEDULE. REUSE EXISTING BRANCH CIRCUIT. CONTROL FROM NEW TIME CLOCK.
- MOUNTING HEIGHT OF NEW FIXTURES IN APPARATUS BAY TO MATCH MOUNTING HEIGHT OF EXISTING FIXTURES.
- PROVIDE SWITCH FOR LIGHT IN HOOD.
- MOUNT TYPE F14 AND F15 FIXTURES ON A 12" DIAMETER BY 24" DEEP CONCRETE BASE. TOP OF BASE SET 1" ABOVE FINISH GRADE. CONDUIT WITHIN BASE SHALL BE HEAVY WALL STEEL. CONVERT TO PVC CONDUIT 12" FROM BASE. INCLUDE DRIVEN GROUND ROD IN BASE. CONNECT TO EQUIPMENT GROUND CONDUCTOR AND FIXTURE GROUND. VERIFY EXACT LOCATIONS ON SITE TO SUIT FLAG POLE AND SITE SIGN.
- PROVIDE A LITHONIA ELM1254RO OR EQUAL. LOCATE ABOVE CEILING AS INDICATED ON DRAWINGS.
- ADD FIXTURES UNDER NEW CANOPY. USE EXISTING BRANCH CIRCUIT LOCATED NEAR EXISTING FRONT DOOR. CONTROL FROM TIME CLOCK.

DRAWING SET OWNER REVIEW

COPYRIGHT 2012
STRANG, INC.

FILE NAME 2011008-E201L.DWG

REVISIONS

DRAWN KK

CHECKED AS

DATE 03-09-12

PROJECT NO. 2011009

PROJECT TITLE

CITY OF MADISON
FIRE STATION #2
ADDITION AND
REMODELING

421 GRAND CANYON DRIVE
MADISON, WISCONSIN

SHEET TITLE

LIGHTING ADDITION
AND REMODELING
FLOOR PLANS

SHEET NO.

E201L