

Madison, Wisconsin

CITY OF MADISON

CITY ENGINEERING DIVISION DEPARTMENT OF PUBLIC WORKS

PLAN OF PROPOSED IMPROVEMENT

INDEX OF SHEETS

SHEET NO.	TITLE
1	TYPICAL SECTIONS & DETAILS
D1	EROSION CONTROL PLAN
EC1	STREET PLAN & PROFILE
P1	UTILITY PLAN & PROFILE
U1	STORM SEWER SCHEDULE
U2	STORM SEWER DETAILS
UD1	CROSS SECTIONS
X1-X2	

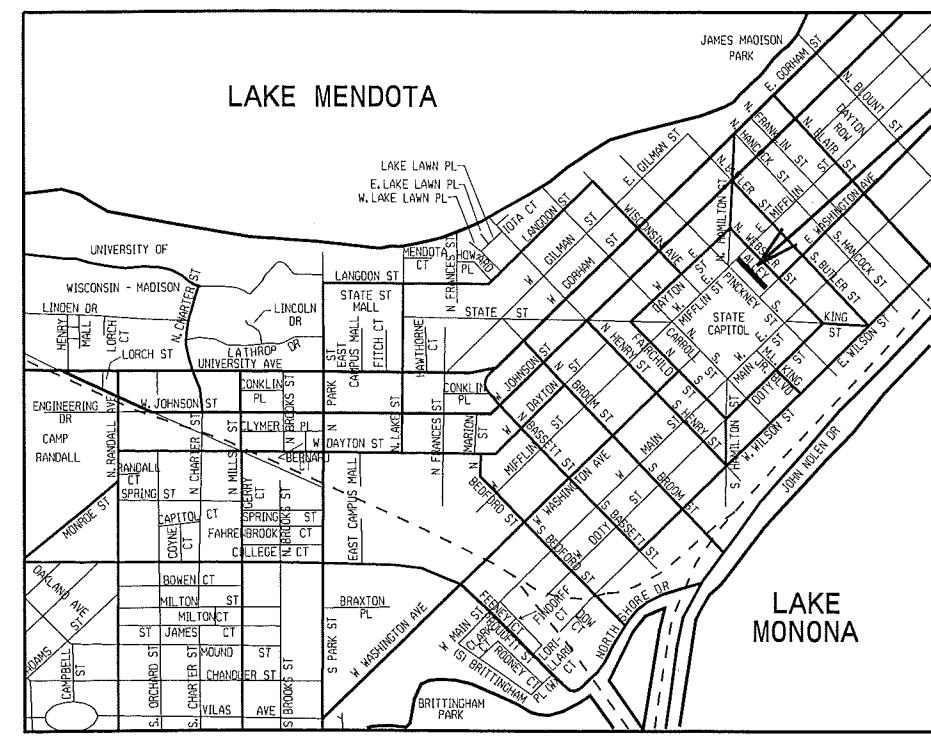
BLOCK 101 ALLEY RECONSTRUCTION ASSESSMENT DISTRICT- 2012

CITY PROJECT NO. 53W1149
CONTRACT NO. 6611

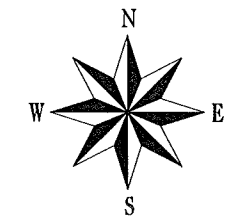
CONVENTIONAL SIGNS

FIELD VERIFY ALL UTILITY LOCATIONS

GAS	— G —
STORM SEWER	— ST —
SANITARY SEWER	— SAN —
WATER	— W —
OVERHEAD ELECTRIC	— OH —
POWER POLE	□
ADA COMPLIANT RAMP W/ DETECTABLE WARNING FIELD	▣
COMBUSTIBLE FLUIDS	⚠



**CONSTRUCTION
PROJECT LOCATION**



NOTES:

ALL GUTTERS SHALL DRAIN WITH A MINIMUM GRADE OF 0.50% TOWARD STORM SEWER INLETS.

SIDEWALK RAMPS AND CURB THRU SIDEWALK RAMPS SHALL HAVE A MAXIMUM SLOPE OF 1" PER 12". SIDEWALK AND CURB RAMPS SHALL BE CONSTRUCTED WITH A SIDE SLOPE OF 2.00%. SIDEWALK SHALL HAVE A MINIMUM LONGITUDINAL SLOPE OF 0.50% AND A MAXIMUM LONGITUDINAL SLOPE OF 5.00% EXCEPT WHERE STREET GRADES EXCEED 5.00%.

EARTH WORK SUMMARY:
 EXCAVATION CUT (MEASURED PLAN QUANTITY).....125 C.Y.
 ESTIMATED UNDISTRIBUTED UNDERCUT.....75 C.Y.
 TOTAL UNCLASSIFIED EXCAVATION CUT.....200 C.Y.

PUBLIC IMPROVEMENT PROJECT APPROVED

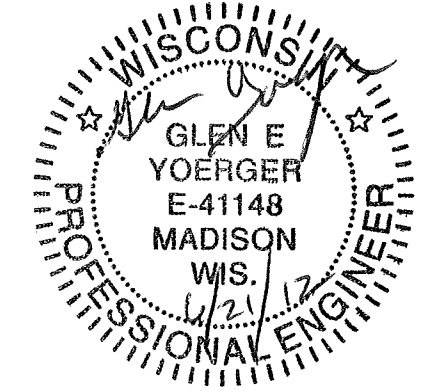
JUNE 19, 2012

BY THE COMMON COUNCIL
OF MADISON, WISCONSIN

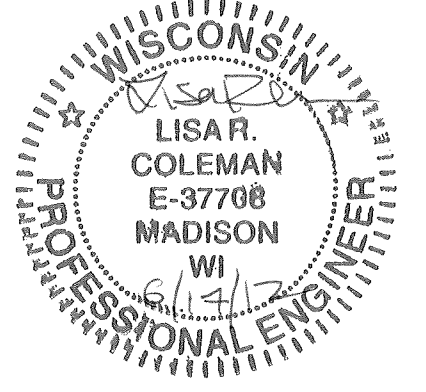
PUBLIC IMPROVEMENT DESIGN
APPROVED BY:

[Signature] 6/22/12
City Engineer Date

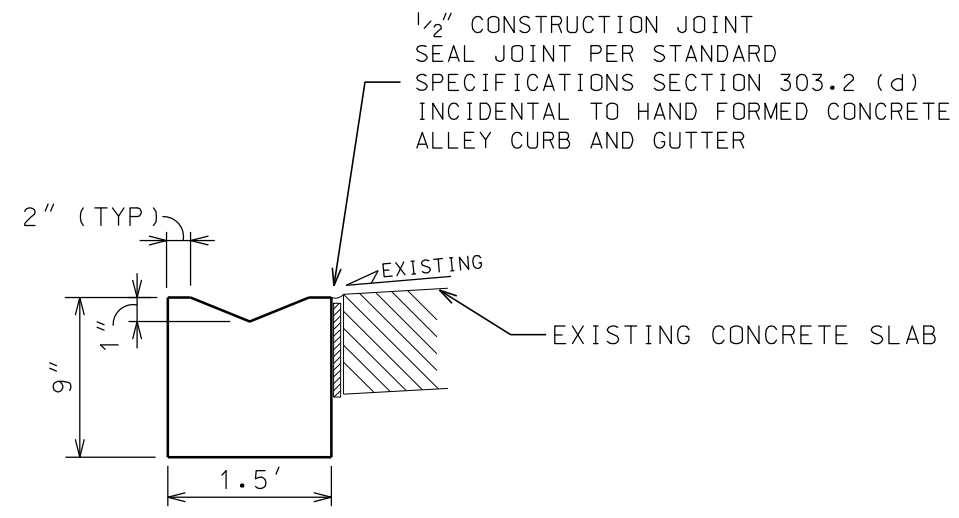
STREET
DESIGNED BY:



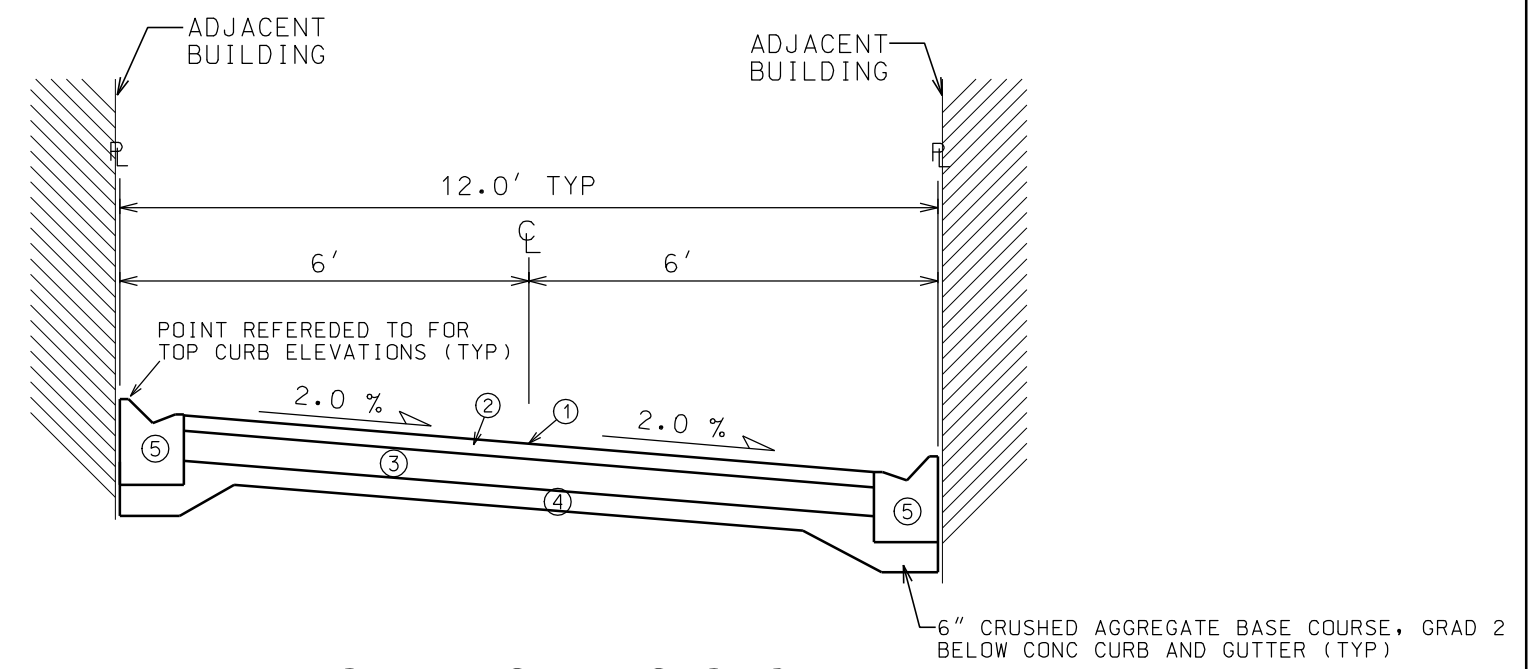
STORM SEWER
DESIGNED BY:



- ① POINT REFERRED TO ON PROFILE
- ② 2" BITUMINOUS UPPER LAYER, 12.5 mm, TYPE E-1
- ③ 2 1/4" BITUMINOUS LOWER LAYER, 19 mm, TYPE E-1
- ④ 3" GRADATION 2 CRUSHED AGGREGATE BASE COURSE
- ⑤ HAND FORMED CONCRETE ALLEY CURB & GUTTER

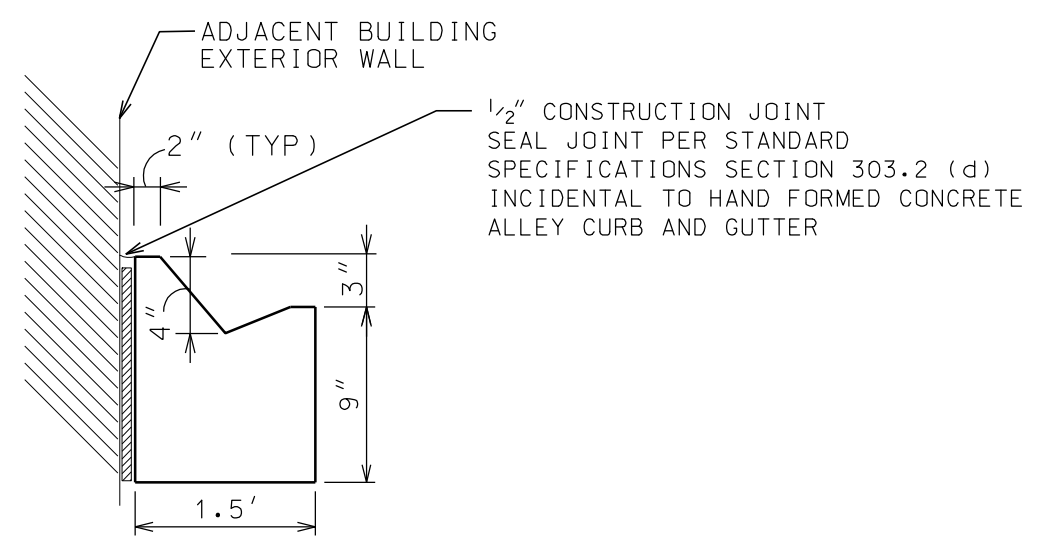


DETAIL - HAND FORMED CONCRETE ALLEY CURB AND GUTTER @ EXISTING CONCRETE SLABS

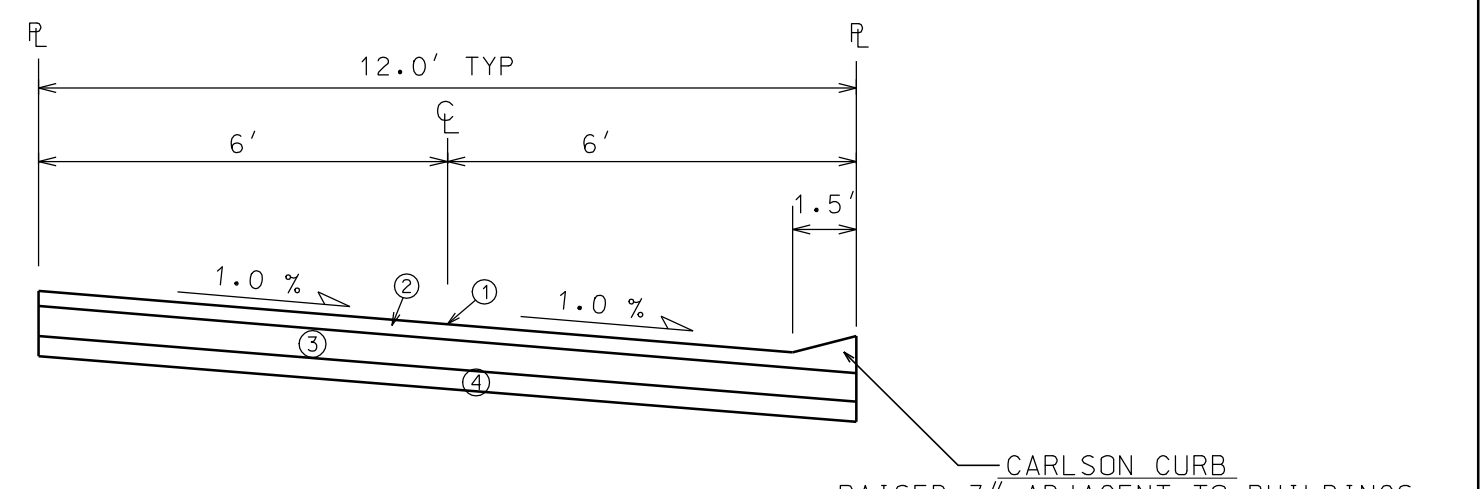


TYPICAL FINISHED SECTION

BLOCK 101 ALLEY
STA 10+50 TO 12+00
NOT TO SCALE



DETAIL - HAND FORMED CONCRETE ALLEY CURB AND GUTTER @ BUILDING FACE



TYPICAL FINISHED SECTION

BLOCK 101 ALLEY
STA 12+00 TO 13+65
NOT TO SCALE

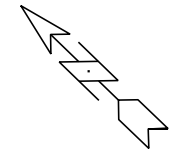
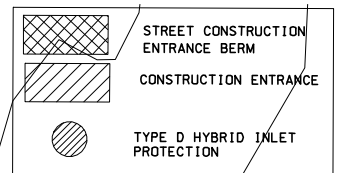
-RAISED 3" ADJACENT TO BUILDINGS
-RAISED 2" @ EXISTING PAVEMENT
INCIDENTAL TO HMA PAVEMENT TYPE E-1

PLOT SCALE: 1" = 10'

PLOT NAME: TYPESEC DETAIL.DGN

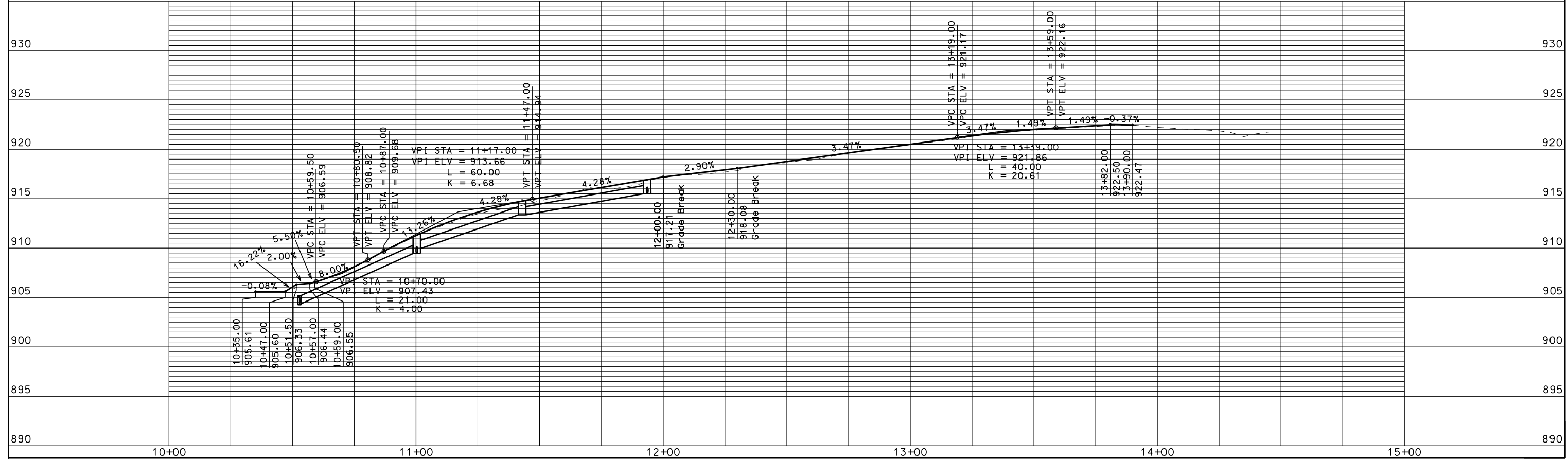
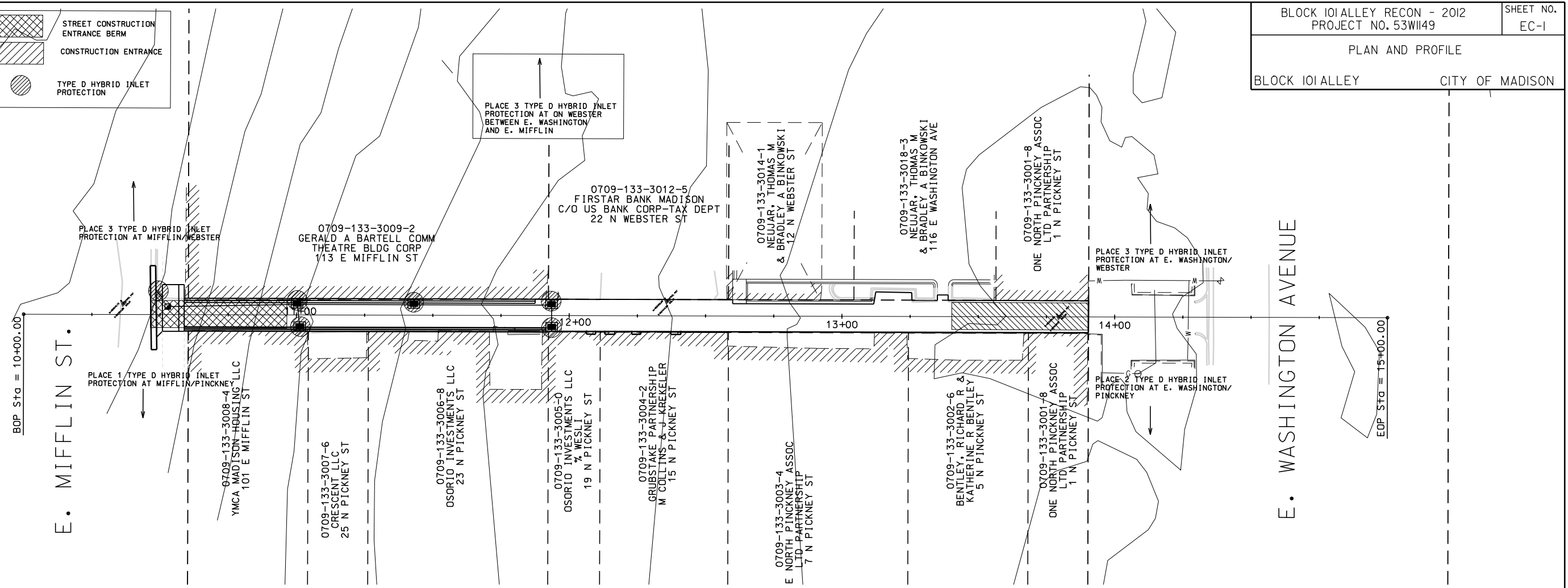
REV. DATE: 6/22/2012

ORIGINATOR: CITY OF MADISON, STREETS DIVISION

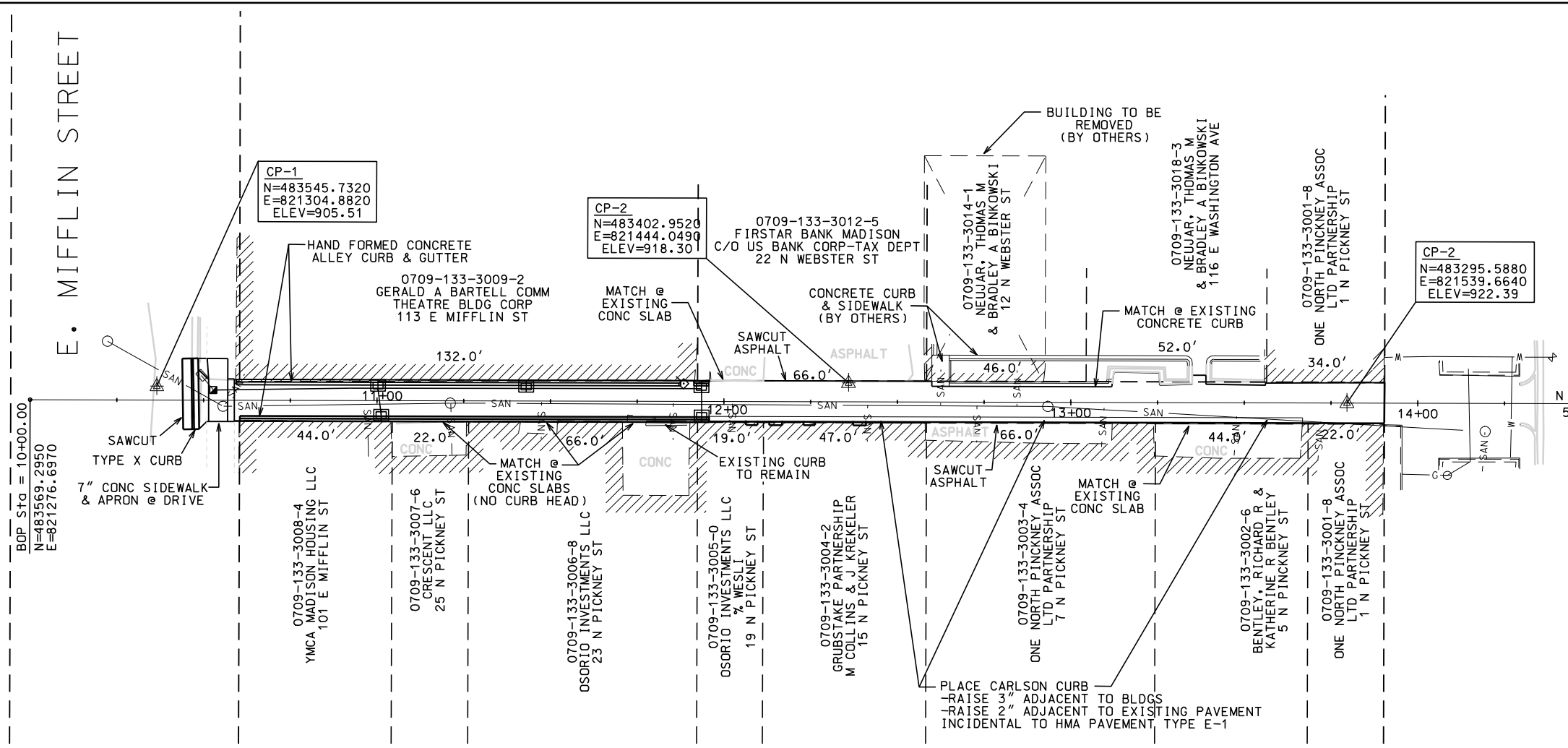
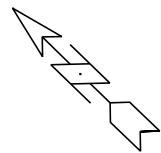


PLOT NAME:
PLOT SCALE:

REV. DATE:



ORIGINATOR: CITY OF MADISON, STREETS DIVISION



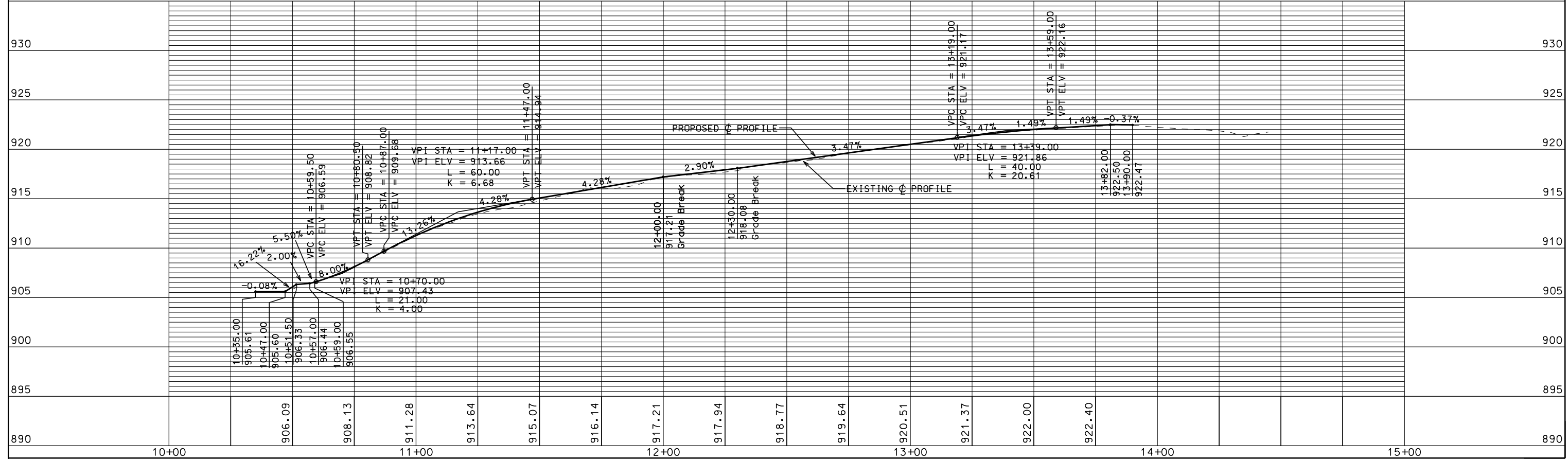
BOP Sta = 10+00.00
N=483569.2950
E=821276.6970

EOP Sta = 15+00.00
N=483208.7330
E=821623.1000

PLOT SCALE: 1"=40'

PLOT NAME: BLOCK IOI ALLEY RECON - 2012

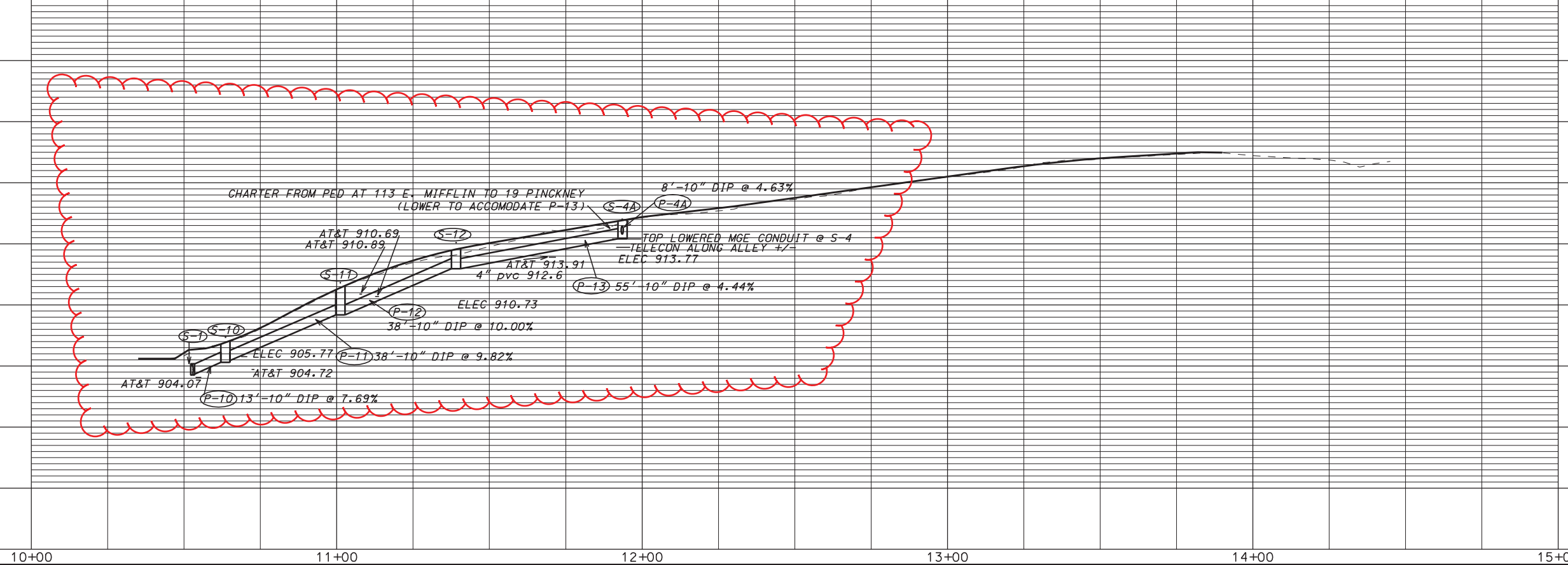
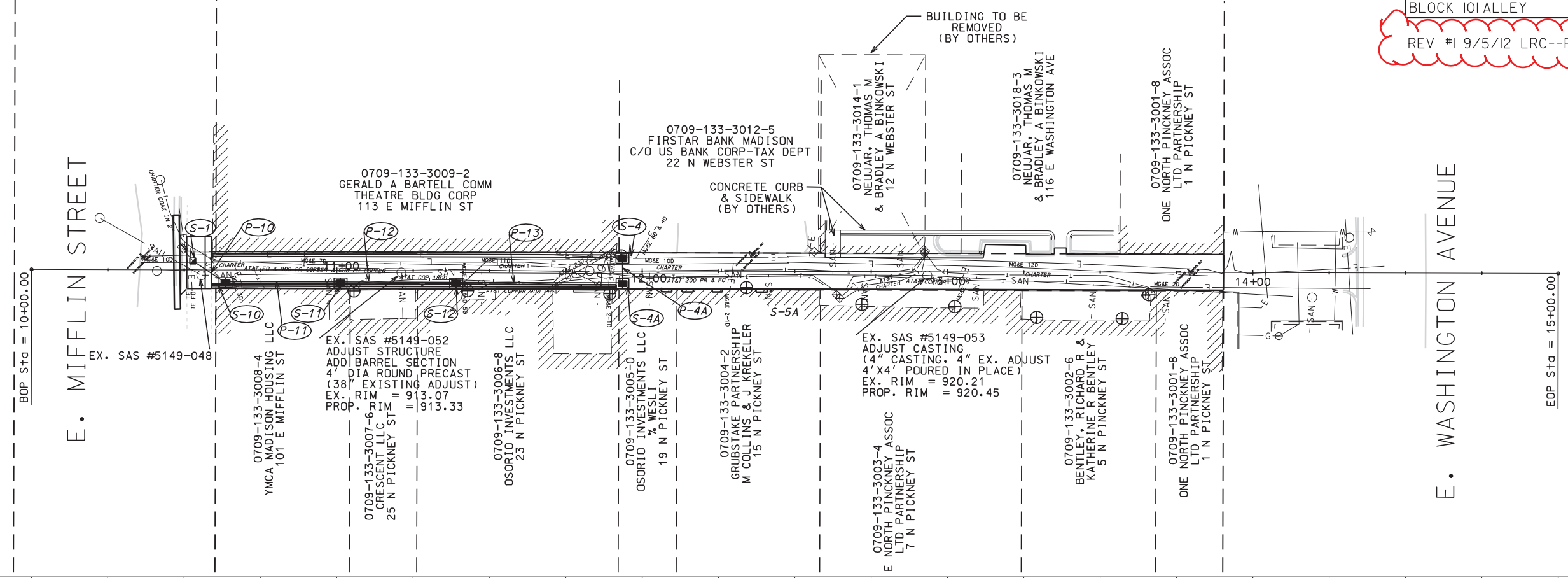
REV. DATE: 6/22/2012



ORIGINATOR: CITY OF MADISON, STREETS DIVISION

PLAN AND PROFILE

BLOCK IOI ALLEY CITY OF MADISON
REV #1 9/5/12 LRC--REVISED STORM SEWER



PLOT SCALE: 1" = 40'

REV. DATE:

ORIGINATOR: CITY OF MADISON, STREETS DIVISION

STORM SEWER SCHEDULE

ALIGNMENT CODES:

'AL' =ALLEY

BLOCK 101 ALLEY RECON - 2012

SHEET NO.

PROJECT NO. 53W1149

U-2

STORM SEWER SCHEDULE

CITY OF MADISON

STRUCTURES

STRUC. NO.	STATION	LOCATION (OFFSET)	TYPE	TOP OF CASTING	E.I.	DEPTH	NOTES
S-1	10'AL'+52.81	LT-2.95	CONCRETE COLLAR	---	904.30	---	CONNECT TO EX. 12" PVC PIPE
* S-10	10'AL'+63.55	RT-4.17	SPECIAL INLET	906.67	905.30	1.37	
* S-11	11'AL'+01.19	RT-4.17	SPECIAL INLET	911.15	909.19	1.96	
* S-12	11'AL'+39.07	RT-4.17	SPECIAL INLET	914.30	912.99	1.31	(1)
* S-4A	11'AL'+93.58	RT-4.17	SPECIAL INLET	916.75	915.43	1.32	(1)
* S-4	11'AL'+93.50	LT-4.18	SPECIAL INLET	916.95	915.80	1.15	(2)

PIPES

PIPE NO.	FROM (DNSTM)	TO (UPSTM)	LGTH (FT)	DISCH. E.I.	INLET E.I.	SLOPE (%)	PIPE SIZE	TYPE	NOTES
P-10	S-1	S-10	13	904.30	905.30	7.69%	10"	DIP	*
P-11	S-10	S-11	38	905.46	909.19	9.82%	10"	DIP	NCM *
P-12	S-11	S-12	38	909.19	912.99	10.00%	10"	DIP	(1) *
P-13	S-12	S-4A	55	912.99	915.43	4.44%	10"	DIP	(1) *
P-4A	S-4A	S-4	8	915.43	915.80	4.63%	8"	DIP	*

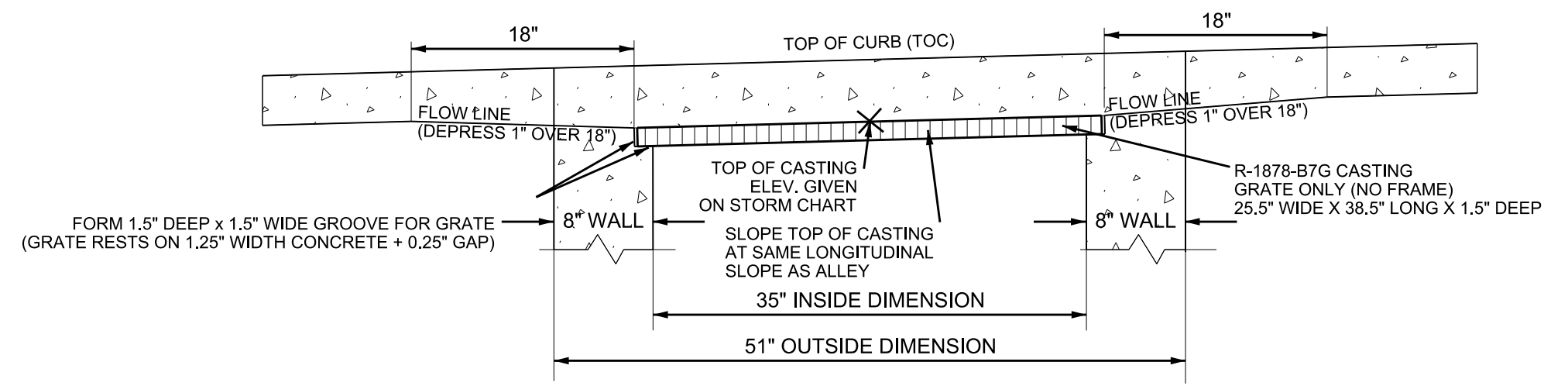
*REV#1 9/5/12 LRC--REVISED STORM SEWER

SPECIFIC NOTES:

- 1) COORDINATE W/ AT&T AND CHARTER TO RELO UTILS AS STORM SEWER IS INSTALLED
- 2) PLACE 1" CONCRETE TO COVER MG&E PLASTIC CONDUIT & PLACE VISQUEEN ABOVE. POUR FLOOR OF STRUCTURE ABOVE VISQUEEN. FLOOR OF STRUCTURE MAY BE THINNED TO 4" WHERE REQUIRED.

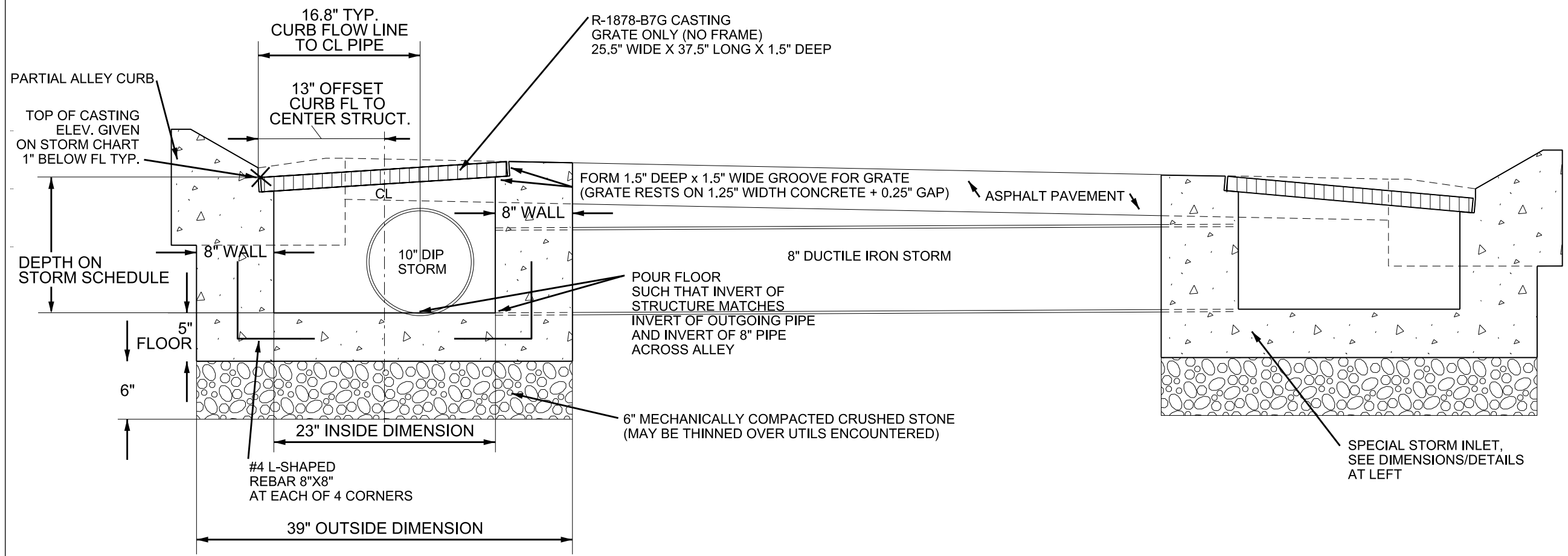
STANDARD NOTES:

- ABBREVIATIONS: AE = APRON ENDWALL; RCP = REINFORCED CONCRETE PIPE; HERCP = HORIZONTAL ELLIPTICAL REINFORCED CONCRETE PIPE; DNA = DOES NOT APPLY; SAS = SEWER ACCESS STRUCTURE; LP = LOW POINT INLET STRUCTURE; FP = FIELD POURED STRUCTURE; TR = TOP OF CONCRETE ROOF; NCM = NO CROWN MATCH FOR PIPES
- APPROXIMATE DISCHARGE E.I. GIVEN, ADJUST E.I. AND PIPE SLOPE IN THE FIELD.
- TOP OF CASTING GRADE GIVEN IS THE TOP OF CURB FOR INLET STRUCTURES AND THE FLOWLINE OF THE CLOSED CASTING FOR SAS's.
- TOP OF CONCRETE ROOF (TR) IS 1.25' BELOW TOP OF CASTING UNLESS OTHERWISE NOTED.
- ALL REINFORCED CONCRETE PIPES TO BE CLASS III UNLESS OTHERWISE NOTED.
- SURVEYOR TO CONFIRM THAT ALL INLET STATION / OFFSETS LINE UP WITH PROPOSED CURB AND GUTTER.
- ALL STRUCTURES CALLED OUT AS FIELD POURED SHALL BE FIELD POURED. ALL OTHER STRUCTURES (NOT INDICATED AS FIELD POURED) SHALL BE SUBMITTED TO CITY ENGINEERING FOR APPROVAL IF PRECAST STRUCTURES ARE PREFERRED. CONTACT LISA COLEMAN OF CITY ENGINEERING AT (608) 266-4093 FOR PRECAST APPROVALS, OR FAX SHOP DRAWINGS TO (608)264-9275.



NOTE:
FOR INLETS IN ASPHALT (NOT IN CURB)
SET TOP OF CASTING 1" BELOW ASPHALT
PROP GRADE AND MATCH EDGES OF PAVEMENT
WITH STRUCTURE

FRONT ELEVATION - SPECIAL STORM INLET



SECTION CUT ACROSS ALLEY LOOKING UP-STATION

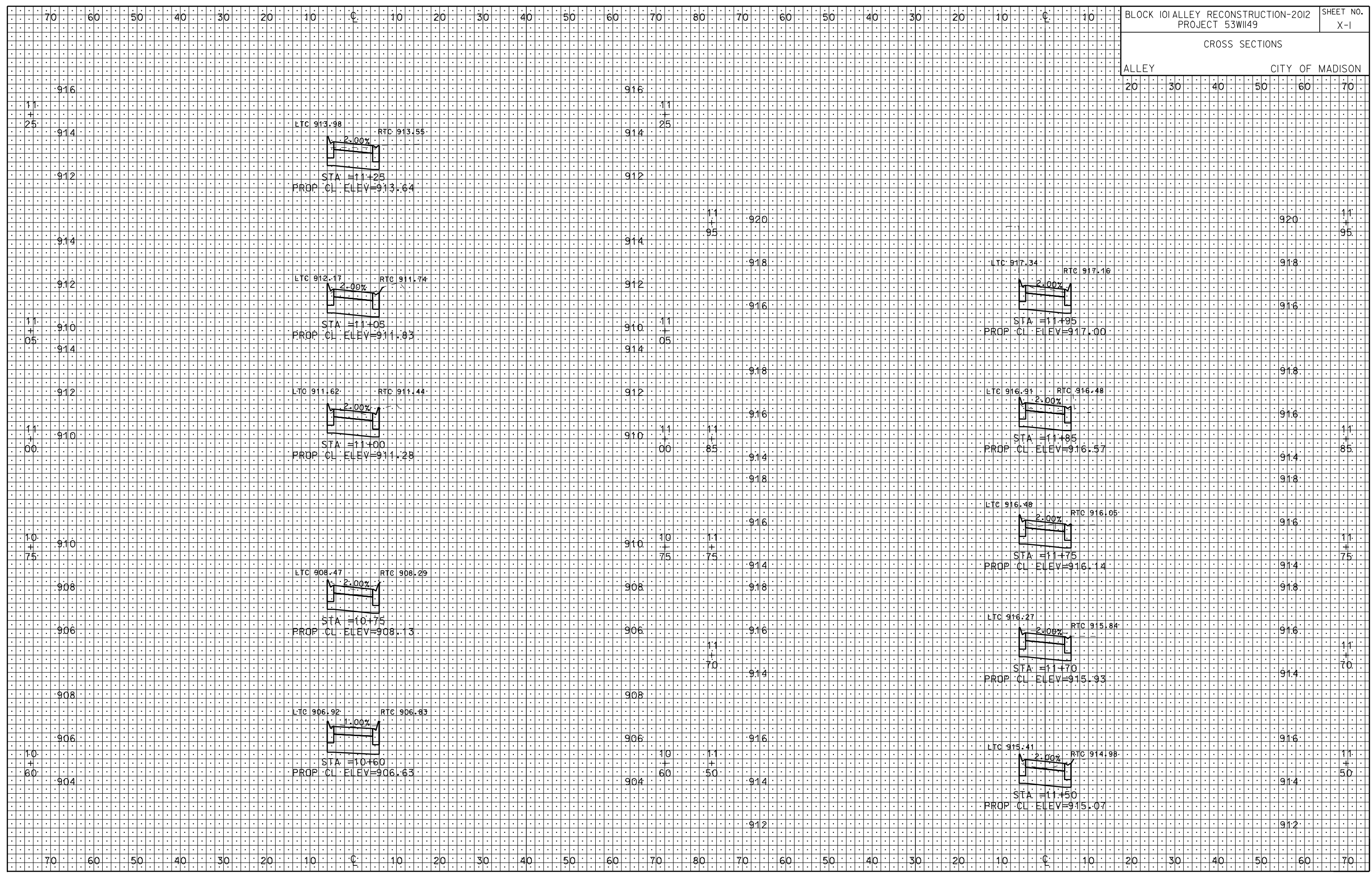


SCALE 1 INCH = 1 FOOT

ORIGINATOR: CITY OF MADISON, STREETS DIVISION
PLOT SCALE:
PLOT NAME:
REV. DATE:
FILE NAME: M:\DESIGN\STREETS\53W1149\Utility\Detail\Detail.dgn
DATE: 6/14/2012

CROSS SECTIONS

ALLEY CITY OF MADISON



PLOT SCALE:

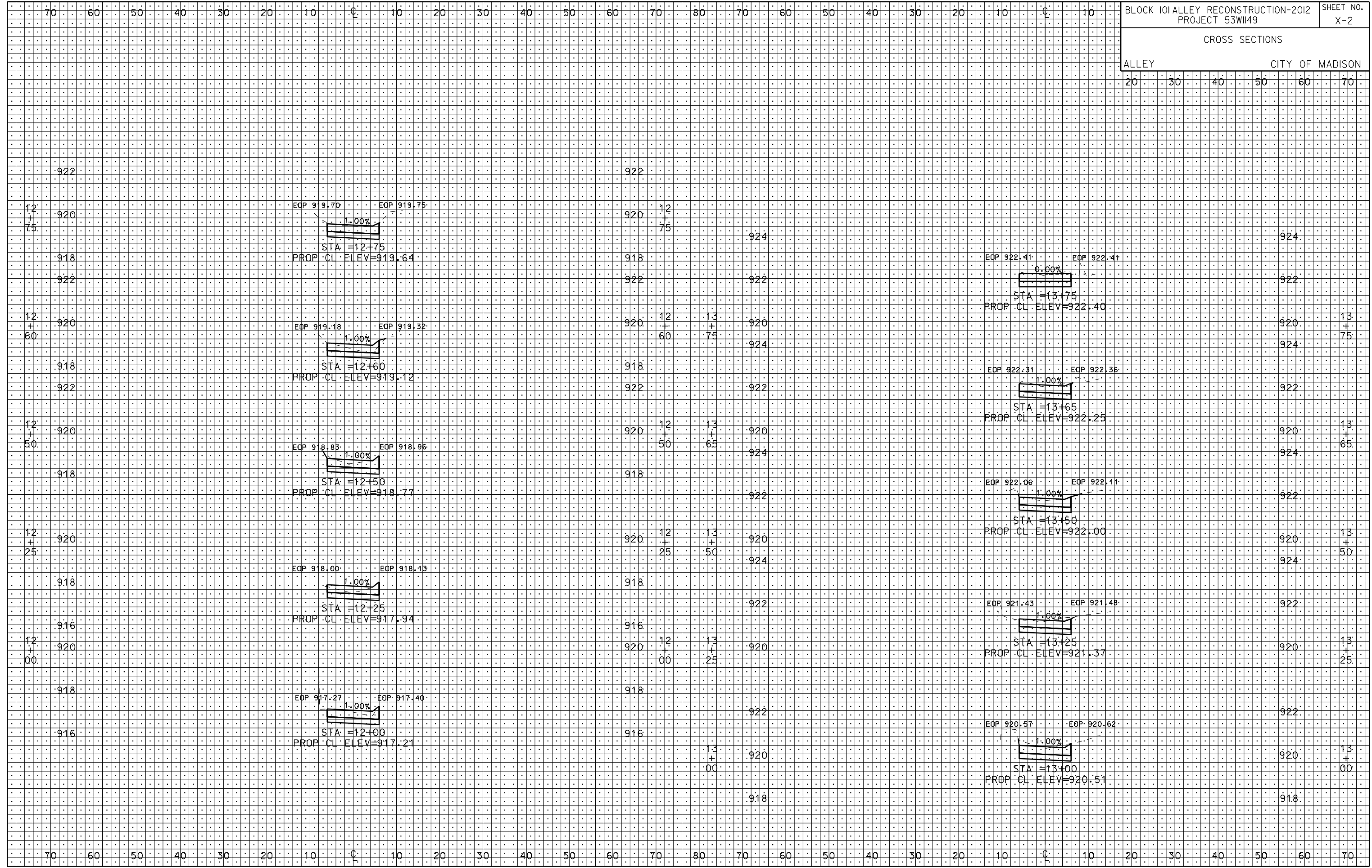
PLOT NAME:

REV. DATE:

ORIGINATOR: CITY OF MADISON, STREETS DIVISION

CROSS SECTIONS

ALLEY CITY OF MADISON



PLOT SCALE:

PLOT NAME:

REV. DATE:

ORIGINATOR: CITY OF MADISON, STREETS DIVISION