



Department of Public Works
City Engineering Division

Robert F. Phillips, P.E.
City Engineer

City-County Building, Room 115
210 Martin Luther King, Jr. Boulevard
Madison, Wisconsin 53703
FAX 608 264 9275
Textnet 866 704 2315
www.cityofmadison.com

608 266 4751

Assistant City Engineer
Michael R. Dalley, P.E.

Principal Engineers
Christina M. Bachmann, P.E.
John S. Fahrney, P.E.
Gregory T. Fries, P.E.
Christopher J. Petykowski, P.E.

Facilities & Sustainability
Jeanne E. Hoffman, Manager
James C. Whitney, A.I.A.

Operations Supervisor
Kathleen M. Cryan

GIS Manager
David A. Davis, R.L.S.

Financial Officer
Steven B. Danner-Rivers

Hydrogeologist
Brynn Bemis

February 8, 2012

NOTICE OF ADDENDUM

ADDENDUM NO. 1

CONTRACT NO. 6801

RESURFACING 2012 – CURB & GUTTER & CASTINGS WITH STORM SEWER

Revise and amend the contract document(s) for the above project as stated in this addendum, otherwise, the original document shall remain in effect.

Special Provisions:

Section 107.7: Peak Hour Restrictions have been added to Raymond Road

Bid Item 90036 – Street Sweeping has been added to revise the payment units from Lump Sum to Each

Remove Proposal Pages: E-1 through E-9

Insert Proposal Pages: E-1 through E-9 (Rev Date 2-7-2012)

Summary

The following Bid Items have been removed:

21013 Street Sweeping, 21031 Inlet Protection, Type C – Complete

21041 Inlet Protection, Type D – Modified.

The following Bid Items have been added:

21032 Inlet Protection, Type C – Provide & Install

21033 Inlet Protection, Type C – Maintain

21034 Inlet Protection, Type C – Remove

21042 Inlet Protection, Type D – Provide & Install

21043 Inlet Protection, Type D – Maintain

40203 HMA Pavement Type E-3

40211 Tack Coat

40301 Full Width Grinding

21044 Inlet Protection Type D – Remove, 90036 Street Sweeping.

The following bid item has been revised:

40362 Adjust Access Structure Casting Resurfacing was listed twice on the proposal page.

February 8, 2012

Page 2

Remove Plan Sheets: 2, 21, 22

Insert Plan Sheet: 2 (Rev Date 2-7-2012), 13 (original posting, Date 1-27-12), 21-22 (Rev Date 2-1-2012)
Summary

Revised Sheet 2 shows quantity revisions; revised Sheets 21-22 show mill and overlay limits on Raymond Road.

Sheet 13 was in the plan sets on the web site but was not included with the plans sets at Emil St.

Please acknowledge this addendum on page E1 of the contract documents.

Electronic version of these documents can be found on the City of Madison web site at:

<http://www.cityofmadison.com/business/PW/contracts/openforBid.cfm>

If you are unable to download plan revisions associated with the addendum, please contact the Engineering office at 608-266-4751 receive the material by another route.

A handwritten signature in black ink, appearing to read 'R. Phillips', is written over a horizontal line.

Robert F. Phillips, City Engineer

Cc: 7 copies of plans for Inspectors

PROPOSAL

NAME OF BIDDER

Contract Name: RESURFACING 2012 - CURB & GUTTER AND CASTINGS WITH STORM SEWER

REVISED 02/08/12

Contract No. 6801

ITEM		ESTIMATED QUANTITIES		UNIT PRICE BID	TOTAL BID
ACCOUNT NO.					
CS53-54996-810358-00-53W1308 Castings & Eng Op					
CS53-58270-810358-00-53W1308 rebuild/new inlets and leads					
ESTM-58270-810381-00-53W1308 large pipe and large SASs					
ESTM-58270-810381-00-53W1315 (new storm)					
ESTM-58270-810551-00-53W1315 (Urban Water Quality)					
ESTM-58270-810515-00-53W1315 (Rain Gardens)					
ES01-54472-810332-00-53W1308 Sanitary					
EW01-54472-810455-00-53W1308 Water					
ET01-54316-502360 Metro Bus					
10720	TRAFFIC CONTROL SIGN - PORTABLE ARROW BOARD	20.00	DAYS	\$	-
10721	TRAFFIC CONTROL SIGN - PORTABLE CHANGEABLE MESSAGE	55.00	DAYS	\$	-
10801	ROOT CUTTING - CURB & GUTTER	500.00	LF	\$	-
20101	EXCAVATION CUT	100.00	CY	\$	-
20202	FILL, INCLUDING TOPSOIL	50.00	CY	\$	-
20312	REMOVE CATCHBASIN, UNDISTRIBUTED	3.00	EACH	\$	-
20314	REMOVE PIPE - STORM, UNDISTRIBUTED	147.00	LF	\$	-
20323	REMOVE CONCRETE SIDEWALK AND DRIVE	252.00	SF	\$	-
20701	TERRACE SEEDING	100.00	SY	\$	-

PROPOSAL

NAME OF BIDDER

Contract Name: RESURFACING 2012 - CURB & GUTTER AND CASTINGS WITH STORM SEWER

REVISED 02/08/12

Contract No. 6801

ITEM		ESTIMATED QUANTITIES		UNIT PRICE BID	TOTAL BID
21032	INLET PROTECTION, TYPE C - PROVIDE & INSTALL	23.00	EACH		\$ -
21033	INLET PROTECTION, TYPE C - MAINTAIN	23.00	EACH		\$ -
21034	INLET PROTECTION, TYPE C - REMOVE	23.00	EACH		\$ -
21042	INLET PROTECTION, TYPE D - PROVIDE & INSTALL	52.00	EACH		\$ -
21043	INLET PROTECTION, TYPE D - MAINTAIN	52.00	EACH		\$ -
21044	INLET PROTECTION, TYPE D - REMOVE	52.00	EACH		\$ -
21052	POLYMER STABILIZATION, UNDISTRIBUTED	100.00	SY		\$ -
30122	EPOXY COATED BAR STEEL REINFORCING	100.00	LF		\$ -
30201	TYPE "A" CONCRETE CURB & GUTTER	50.00	LF		\$ -
30209	SPECIAL WATERWAY	450.00	SF		\$ -
30301	5 INCH CONCRETE SIDEWALK	750.00	SF		\$ -
30302	7 INCH CONCRETE SIDEWALK AND DRIVE	552.00	SF		\$ -
30330	PROFILE CURB CUT	25.00	LF		\$ -
30340	CURB RAMP DETECTABLE WARNING FIELD	504.00	SF		\$ -
40101	CRUSHED STONE BASE COURSE, GRADATION No. 1	100.00	TON		\$ -
40251	ASPHALT MATERIAL FOR CURB FRONT FILL	1,725.00	LF		\$ -
40362	ADJUST ACCESS STRUCTURE CASTING, RESURFACING	43.00	EACH		\$ -

PROPOSAL

NAME OF BIDDER

Contract Name: RESURFACING 2012 - CURB & GUTTER AND CASTINGS WITH STORM SEWER

REVISED 02/08/12

Contract No. 6801

ITEM		ESTIMATED QUANTITIES		UNIT PRICE BID	TOTAL BID
40363	ADJUST CATCHBASIN CASTING, RESURFACING	3.00	EACH		\$ -
40364	ADJUST INLET CASTING, TYPE "H", RESURFACING	4.00	EACH		\$ -
40365	ADJUST INLET CASTING, "TUB" TYPE, RESURFACING	2.00	EACH		\$ -
40366	REBUILD INLET - RESURFACING	16.00	EACH		\$ -
40367	ADJUST VALVE CASTING, METHOD #1 - RESURFACING	81.00	EACH		\$ -
40368	ADJUST VALVE CASTING, METHOD #2 - RESURFACING	5.00	EACH		\$ -
40369	INSTALL ADJUSTABLE VALVE BOX RISER	10.00	EACH		\$ -
40371	REBUILD ACCESS STRUCTURE TOP - RESURFACING	5.00	EACH		\$ -
40382	REMOVE AND REPLACE CONCRETE CURB & GUTTER, HAND PLACED - RESURFACING	7,780.00	LF		\$ -
40391	REMOVE AND REPLACE 5 INCH CONCRETE SIDEWALK - RESURFACING	2430.00	SF		\$ -
40392	REMOVE AND REPLACE 7 INCH CONCRETE SIDEWALK AND DRIVE - RESURFACING	7008.00	SF		\$ -
50411	12 INCH RCP STORM SEWER PIPE	1,351.00	LF		\$ -
50741	TYPE "H" INLET	33.00	EACH		\$ -

ESTM-58270-810381-00-53W1315 (new storm)

20313	REMOVE INLET	5.00	EACH		\$ -
20336	PIPE PLUG	2.00	EACH		\$ -
20711	TRENCH RESTORATION 4 INCH TOPSOIL, SEED, FERTILIZE, MULCH	380.00	TF		\$ -

PROPOSAL

NAME OF BIDDER

Contract Name: RESURFACING 2012 - CURB & GUTTER AND CASTINGS WITH STORM SEWER

REVISED 02/08/12

Contract No. 6801

ITEM		ESTIMATED QUANTITIES		UNIT PRICE BID	TOTAL BID
20172	EROSION MATTING, TYPE II, CLASS B	43.00	SY		\$ -
40203	HMA PAVEMENT TYPE E-3	150.00	TON		\$ -
40211	TACK COAT	62.00	GAL		\$ -
40301	FULL WIDTH GRINDING (2")	1,240.00	SY		\$ -
50211	SELECT BACKFILL FOR STORM SEWER	5,689.00	TF		\$ -
50225	UTILITY TRENCH PATCH, TYPE III	5,346.00	TF		\$ -
50227	UTILITY TRENCH PATCH, TYPE IV	5,497.00	TF		\$ -
50390	SEWER ELECTRONIC MARKERS	2.00	EACH		\$ -
50412	15 INCH RCP STORM SEWER PIPE	3,385.00	LF		\$ -
50413	18 INCH STORM SEWER PIPE	535.00	LF		\$ -
50436	38 INCH X 60 INCH HERCP STORM SEWER PIPE	684.00	LF		\$ -
50451	FIELD BEND	2.00	EACH		\$ -
50462	15 INCH RCP AE	1.00	EACH		\$ -
50602	15 INCH RCP AE GATE	1.00	EACH		\$ -
50723	3'X3' STORM SAS	19.00	EACH		\$ -
50724	4' X 4' SAS, UNDISTRIBUTED	5.00	EACH		\$ -
50792	STORM SEWER TAP	4.00	EACH		\$ -

PROPOSAL

NAME OF BIDDER

Contract Name: RESURFACING 2012 - CURB & GUTTER AND CASTINGS WITH STORM SEWER

REVISED 02/08/12

Contract No. 6801

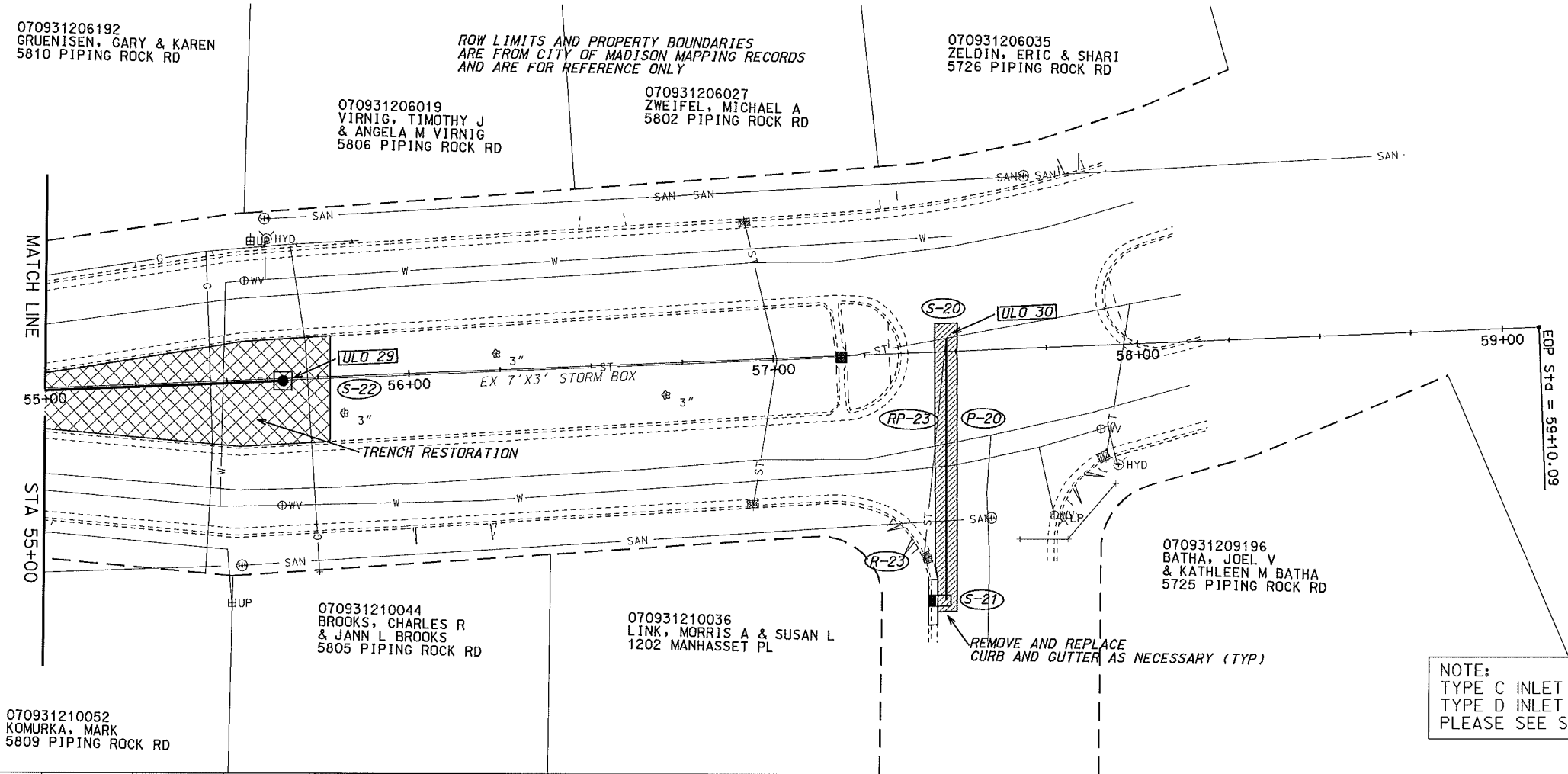
ITEM		ESTIMATED QUANTITIES		UNIT PRICE BID	TOTAL BID
50801	UTILITY LINE OPENING (ULO)	38.00	EACH		\$ -
90030	3'X6' STORM SEWER SAS	11.00	EACH		\$ -
90031	4'X6' STORM SEWER SAS	1.00	EACH		\$ -
90032	5'X7' STORM SEWER SAS	2.00	EACH		\$ -
90033	3'X3' STORM SAS - SADDLED	1.00	EACH		\$ -
90036	STREET SWEEPING	5.00	EACH		\$ -
ESTM-58270-810551-00-53W1315 (Urban Water Quality)					
50722	6'X6' CATCHBASIN	1.00	EACH		\$ -
90034	6'X7' STORM SEWER CATCHBASIN	1.00	EACH		\$ -
ESTM-58270-810515-00-53W1315 (Rain Gardens)					
90035	RAIN GARDEN (UNDISTRIBUTED)	5.00	EACH		\$ -
GRAND TOTAL					\$0.00

STORM SEWER QUANTITIES

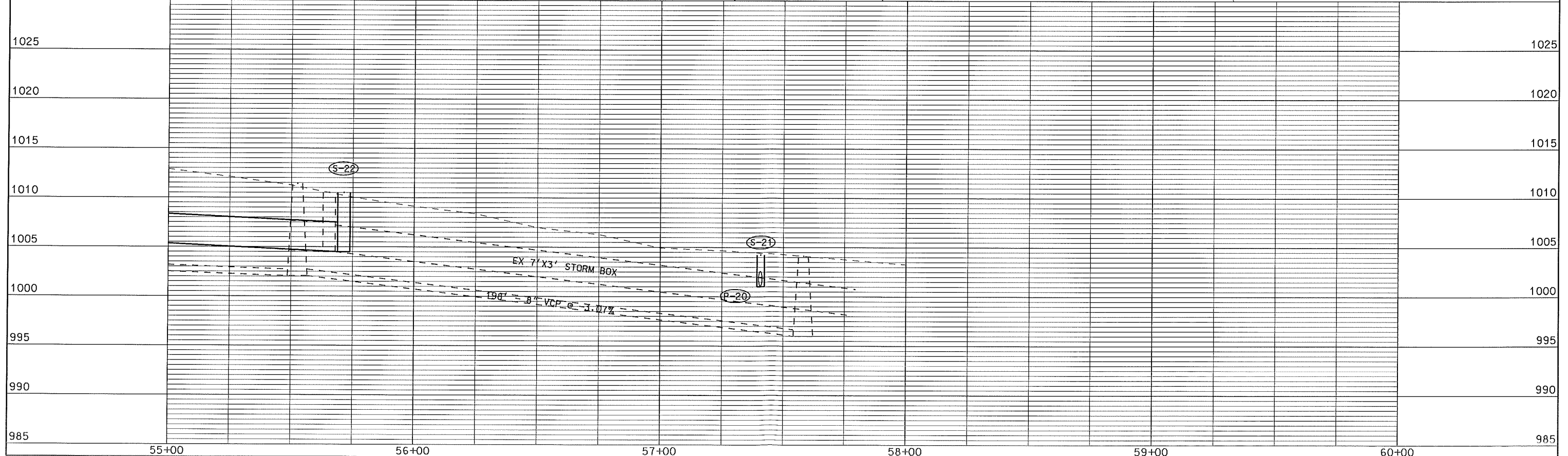
ITEM NUMBER	DESCRIPTION	UNIT	GETTYSBURG	PIPING ROCK	LOMAX	PRAIRIE @ JACOBS	PRAIRIE @ RAYMOND	TOTAL
20311	REMOVE SEWER ACCESS STRUCTURE	EA		1.00				1.00
20313	REMOVE INLET	EA		5.00				5.00
20314	REMOVE PIPE	LF	36.00	61.00				97.00
20323	REMOVE CONCRETE SIDEWALK AND DRIVE	SF		52.00				52.00
20336	PIPE PLUG	EA		2.00				2.00
20711	TRENCH RESTORATION 4 INCH TOPSOIL, SEED, FERTILIZE AND MULCH	TF		120.00	260.00			380.00
21013	STREET SWEEPING (UNDISTRIBUTED)	LUMP						1.00
21032	INLET PROTECTION TYPE C - PROVIDE & INSTALL	EA		13.00		2.00	3.00	18.00
21033	INLET PROTECTION TYPE C - MAINTAIN	EA		13.00		2.00	3.00	18.00
21034	INLET PROTECTION TYPE C - REMOVE	EA		13.00		2.00	3.00	18.00
21042	INLET PROTECTION TYPE D - PROVIDE & INSTALL	EA	13.00	22.00	4.00	3.00	5.00	47.00
21023	INLET PROTECTION TYPE D - MAINTAIN	EA	13.00	22.00	4.00	3.00	5.00	47.00
21044	INLET PROTECTION TYPE D - REMOVE	EA	13.00	22.00	4.00	3.00	5.00	47.00
21052	POLYMER STABILIZATION (UNDISTRIBUTED)	SY						100.00
21072	EROSION MATTING, TYPE II, CLASS B	SY			43.00			43.00
30302	7 INCH CONCRETE SIDEWALK AND DRIVE	SF		52.00				52.00
40203	HMA PAVEMENT TYPE E-3	TON					150.00	150.00
40211	TACK COAT	GAL					62.00	62.00
40301	FULL WIDTH GRINDING (2")	SY					1,240.00	1,240.00
40382	REMOVE AND REPLACE CONCRETE CURB & GUTTER, HAND PLACED - RESURFACING	LF	200.00	350.00	100.00	60.00	100.00	810.00
40391	REMOVE AND REPLACE 5" THICK CONCRETE SIDEWALK - RESURFACING	SF			200.00			200.00
50211	SELECT BACKFILL FOR STORM SEWER	TF	1,032.00	2,855.00	171.00	373.00	1,208.00	5,639.00
50225	UTILITY TRENCH PATCH TYPE III	TF	1,020.00	2,735.00	10.00	373.00	1,208.00	5,346.00
50227	UTILITY TRENCH PATCH TYPE IV	TF	1,020.00	2,735.00	161.00	373.00	1,208.00	5,497.00
50390	SEWER ELECTRONIC MARKERS	EA			2.00			2.00
50411	12 INCH RCP STORM SEWER PIPE	LF	355.00	498.00	171.00	107.00	170.00	1,301.00
50412	15 INCH RCP STORM SEWER PIPE	LF	647.00	1,168.00	266.00	266.00	1,038.00	3,385.00
50413	18 INCH RCP STORM SEWER PIPE	LF	30.00	505.00				535.00
50436	38 INCH X 60 INCH HERCP STORM SEWER PIPE	LF		684.00				684.00
50451	FIELD BEND	EA			2.00			2.00
50462	15 INCH RCP AE	EA			1.00			1.00
50602	15 INCH RCP AE GATE	EA			1.00			1.00
50722	6'X6' CATCHBASIN	EA	1.00					1.00
50723	3'X3' STORM SAS	EA	3.00	5.00	1.00	1.00	4.00	14.00
50741	TYPE "H" INLET	EA	10.00	11.00	4.00	3.00	5.00	33.00
50792	STORM SEWER TAP	EA	1.00	2.00		1.00		4.00
50801	UTILITY LINE OPENING (ULO)	EA	9.00	18.00	2.00	1.00	8.00	38.00
90030	3'X6' STORM SEWER SAS	EA	2.00	9.00				11.00
90031	4'X6' STORM SEWER SAS	EA		1.00				1.00
90032	5'X7' STORM SEWER SAS	EA		2.00				2.00
90033	3'X3' STORM SAS - SADDLED	EA					1.00	1.00
90034	6'X7' STORM SEWER CATCHBASIN	EA		1.00				1.00
90035	RAIN GARDEN (UNDISTRIBUTED)	EA					4.00	4.00

PLOT SCALE: ---

REV. DATE: ---

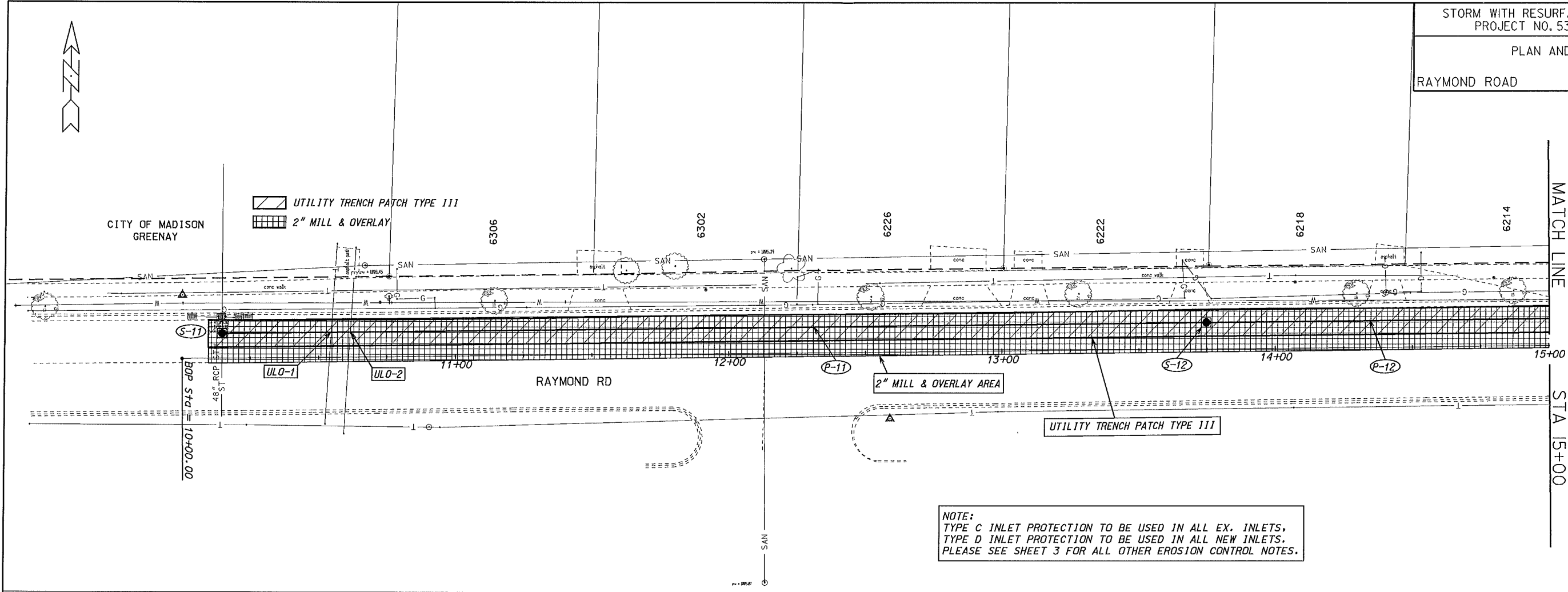


NOTE:
TYPE C INLET PROTECTION TO BE USED IN ALL EX. INLETS.
TYPE D INLET PROTECTION TO BE USED IN ALL NEW INLETS.
PLEASE SEE SHEET 3 FOR ALL OTHER EROSION CONTROL NOTES.

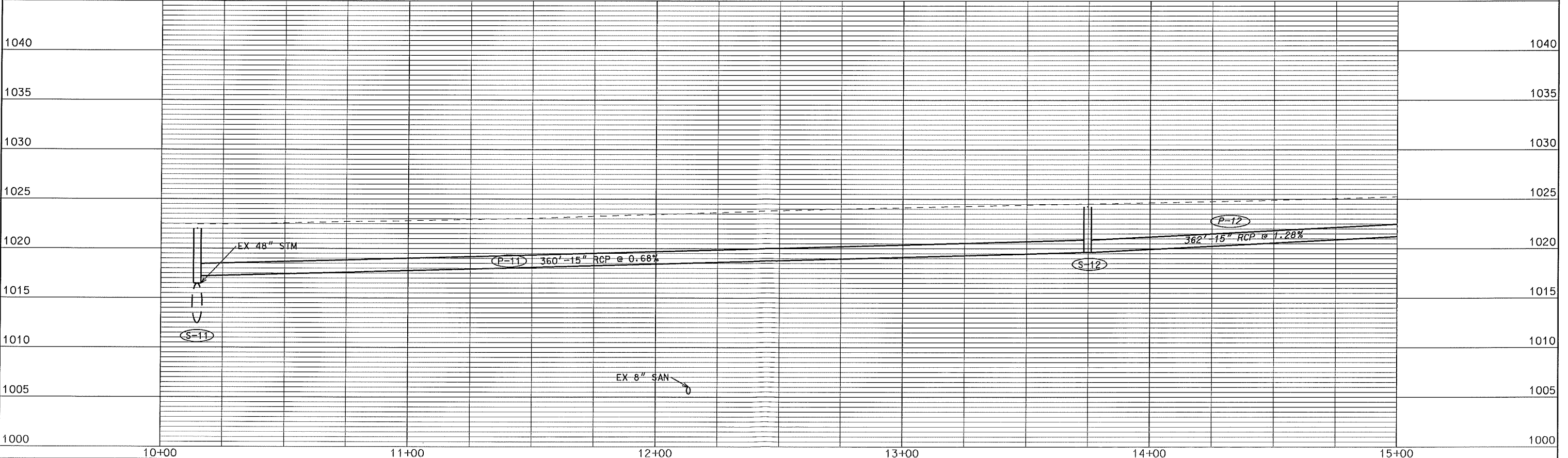


ORIGINATOR: CITY OF MADISON, STREETS DIVISION

PLOT SCALE: REV. DATE:



NOTE:
TYPE C INLET PROTECTION TO BE USED IN ALL EX. INLETS,
TYPE D INLET PROTECTION TO BE USED IN ALL NEW INLETS.
PLEASE SEE SHEET 3 FOR ALL OTHER EROSION CONTROL NOTES.



ORIGINATOR: CITY OF MADISON, STREETS DIVISION

PLOT SCALE: _____
PLOT NAME: _____
REV. DATE: _____

