

Madison, Wisconsin

# CITY OF MADISON

CITY ENGINEERING DIVISION  
DEPARTMENT OF PUBLIC WORKS  
PLAN OF PROPOSED IMPROVEMENT

## UTILITY REPLACEMENT WITH RESURFACING ASSESSMENT DISTRICT - 2012 (E DAYTON ST, JENIFER ST, HANOVER ST & RANDY LN)

PROJECT APPROVED  
February 28, 2012  
BY THE COMMON COUNCIL  
OF MADISON, WISCONSIN

STREET DESIGN  
APPROVED BY:

*[Signature]* 4/24/12  
City Engineer Date

STREET GRADES  
DESIGNED BY:

*[Signature]*  
DUNDEE  
E-40126  
SUN PRAIRIE  
WI  
04-19-2012  
PROFESSIONAL ENGINEER

SANITARY SEWER  
DESIGNED BY:

*[Signature]*  
MARK D. MODER  
E-33979  
MADISON  
WI  
4/14/12  
PROFESSIONAL ENGINEER

STORM SEWER  
DESIGNED BY:

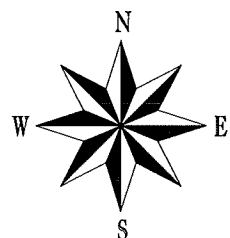
*[Signature]*  
GREGORY J. PHIPPS  
E-30656  
MADISON  
WI  
4/11/12  
PROFESSIONAL ENGINEER

WATER  
DESIGNED BY:

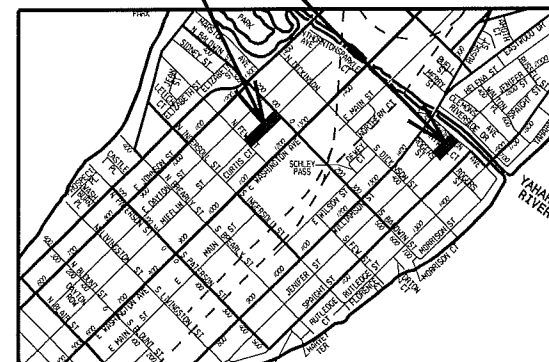
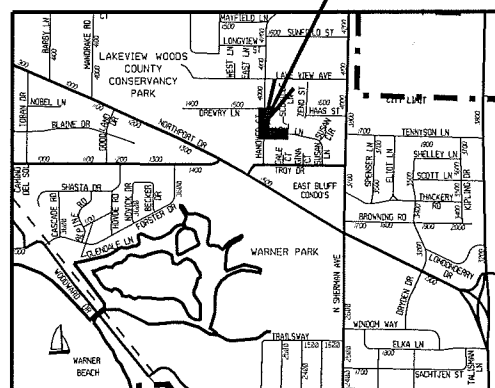
*[Signature]*  
DENNIS M. CAWLEY  
E-15869  
MADISON  
WI  
4/12/12  
PROFESSIONAL ENGINEER

INDEX OF SHEETS

SHEET NO.	1	TITLE
SHEET NO.	D1	DETAILS
SHEET NO.	EC1	HANOVER STREET EROSION CONTROL
SHEET NO.	P1 - P3	HANOVER STREET & RANDY LANE PLAN & PROFILE
SHEET NO.	U1 - U2	E DAYTON STREET UTILITY PLAN & PROFILE
SHEET NO.	U3	E DAYTON STREET SANITARY SCHEDULE
SHEET NO.	U4	JENIFER STREET UTILITY PLAN & PROFILE
SHEET NO.	U5	JENIFER STREET SANITARY SCHEDULE
SHEET NO.	U6	HANOVER STREET & RANDY LANE UTILITY PLAN & PROFILE
SHEET NO.	U7	HANOVER STREET & RANDY LANE SANITARY OVERALL PLAN
SHEET NO.	U8	HANOVER STREET & RANDY LANE SANITARY SCHEDULE
SHEET NO.	U9	HANOVER STREET & RANDY LANE STORM SCHEDULE
SHEET NO.	W1 - W2	E DAYTON STREET WATER PLAN & PROFILE
SHEET NO.	W3	E DAYTON STREET WATER IMPACT PLAN
SHEET NO.	W4	JENIFER STREET WATER PLAN & PROFILE
SHEET NO.	W5	JENIFER STREET WATER IMPACT PLAN
SHEET NO.	W6	WATER ESTIMATE OF MATERIALS
SHEET NO.	X1 - X3	HANOVER STREET CROSS SECTIONS



PROJECT LOCATIONS



CONVENTIONAL SIGNS

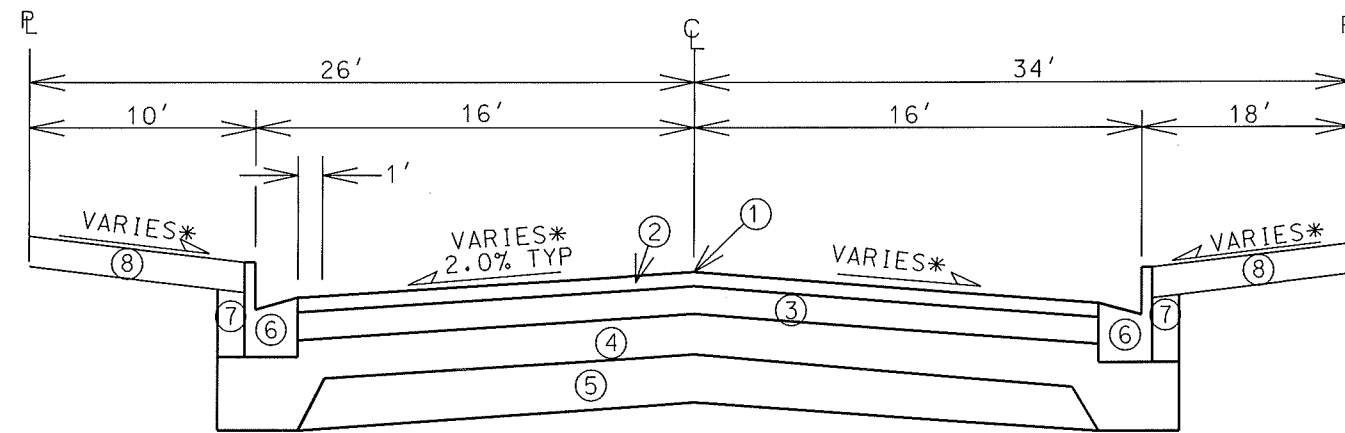
GAS	— G —
ELECTRIC	— E —
OVERHEAD ELECTRIC	— OH —
TELEPHONE OR TELEGRAPH	— T —
STORM SEWER	— ST —
SANITARY SEWER	— SAN —
WATER	— W —
FIBER OPTICS TELEPHONE	— FO —
STREET LIGHT ELECTRIC	— SL —
POWER POLE	⊙
LIGHT POLE	☀
PROPERTY IRON	⊙
RAILROAD	⋯

NOTES:

CURB THRU HANDICAP RAMPS SHALL HAVE A MAXIMUM SLOPE OF 1" PER 12" FROM FLOWLINE TO BACK OF CURB.

SEE CROSS SECTION SHEETS FOR ADDITIONAL TOP OF CURB GRADES

FIELD VERIFY ALL UTILITY LOCATIONS



TYPICAL FINISHED SECTION

HANOVER STREET

NOT TO SCALE

- ① POINT REFERRED TO ON PROFILE
- ② 1<sup>3</sup>/<sub>4</sub>" BITUMINOUS UPPER LAYER, TYPE E-0.3
- ③ 1<sup>3</sup>/<sub>4</sub>" BITUMINOUS LOWER LAYER, TYPE E-0.3
- ④ 4" GRADATION 2 CRUSHED STONE
- ⑤ 6" GRADATION 1 CRUSHED STONE
- ⑥ TYPE 'A' OR 'X' CONCRETE CURB & GUTTER
- ⑦ FILL
- ⑧ 4" TOPSOIL & SEED & MAT

\* SEE CROSS SECTION SHEETS FOR CROSS SLOPES AND TOP OF CURB ELEVATIONS.

PLOT SCALE:

PLOT NAME:

REV. DATE:

ORIGINATOR: CITY OF MADISON, STREETS DIVISION

**EROSION CONTROL NOTES:**

EROSION CONTROL MEASURES SHALL BE IN PLACE PRIOR TO ANY OTHER CONSTRUCTION ACTIVITY.







THE CONTRACTOR IS RESPONSIBLE FOR THE CONSTRUCTION AND MAINTENANCE OF ALL EROSION CONTROL MEASURES UNTIL FINAL ACCEPTANCE BY THE CITY OF MADISON.

THE CONTRACTOR SHALL INSTALL AND MAINTAIN EROSION CONTROL MEASURES IN ACCORDANCE WITH THE WDNRSOC STANDARDS AND CITY OF MADISON STANDARD SPECIFICATIONS.

THE CONTRACTOR SHALL PROVIDE STREET CLEANING AS NEEDED ON A DAILY BASIS TO KEEP TRACKING TO A MINIMUM.

POLYMER SHALL BE APPLIED IN ADVANCE OF A PREDICTED 40% CHANCE OR RAIN.

PROVISION OF AN EROSION CONTROL IMPLEMENTATION PLAN BY THE CONTRACTOR AT THE PRE-CON IS REQUIRED.

-  STREET CONSTRUCTION ENTRANCE BERM
-  CONSTRUCTION ENTRANCE
-  SILT SOCK
-  STREET CONSTRUCTION STONE BERM OR SILT SOCK AS DIRECTED BY ENGR
-  TYPE D INLET PROTECTION
-  TYPE D HYBRID INLET PROTECTION

UTILITY REPLACEMENT WITH RESURFACING - 2012

SHEET NO. EC-1

**EROSION CONTROL PLAN AND PROFILE**

HANOVER STREET CITY OF MADISON

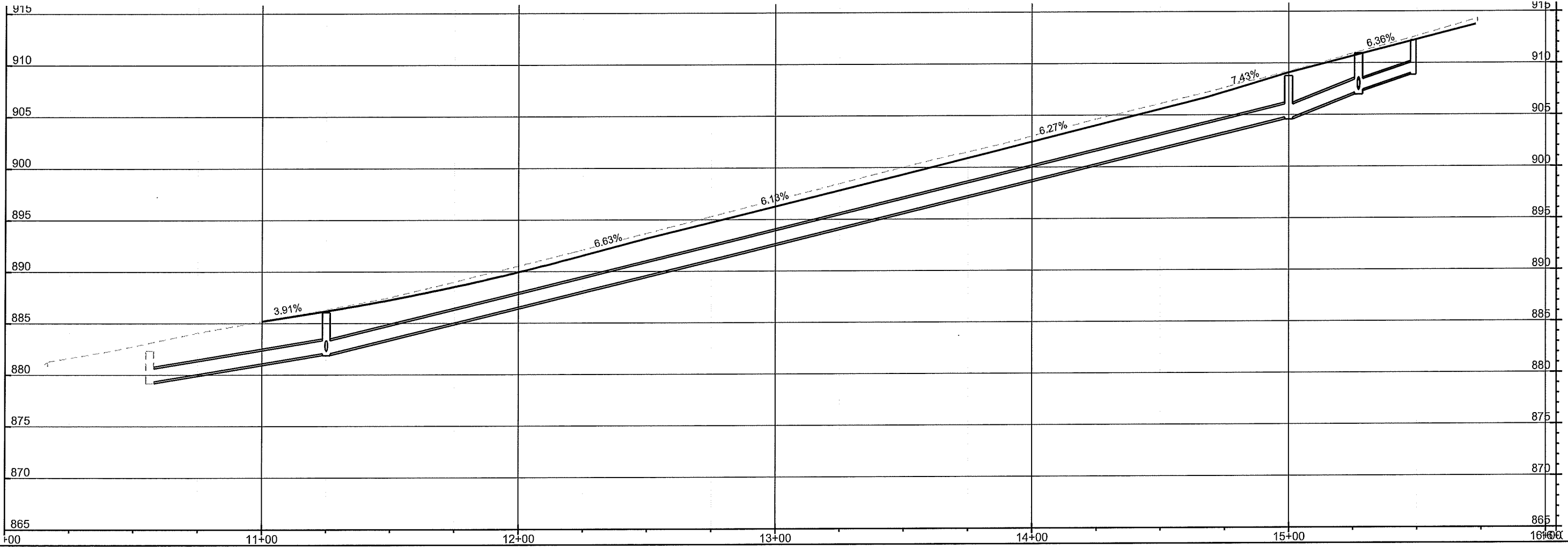
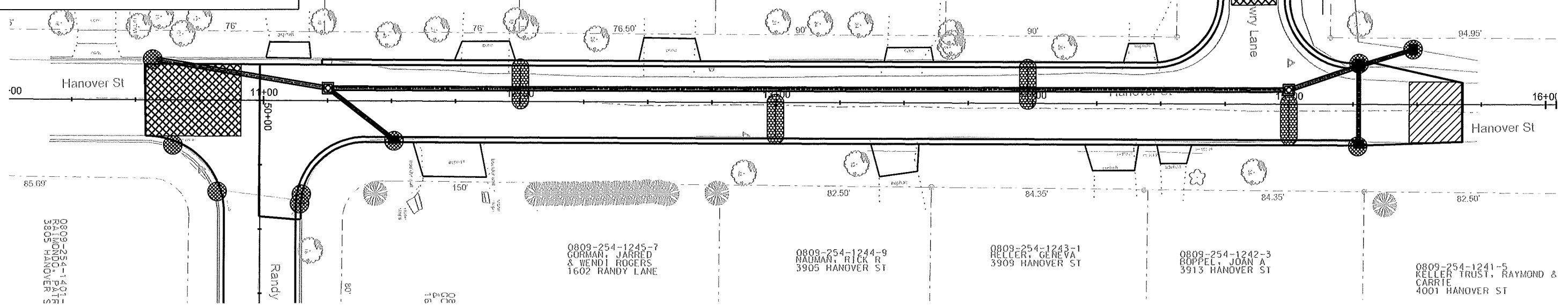
WELLSBURY, JOCELYN R  
4002 HANOVER ST

PLOT SCALE:

PLOT NAME:

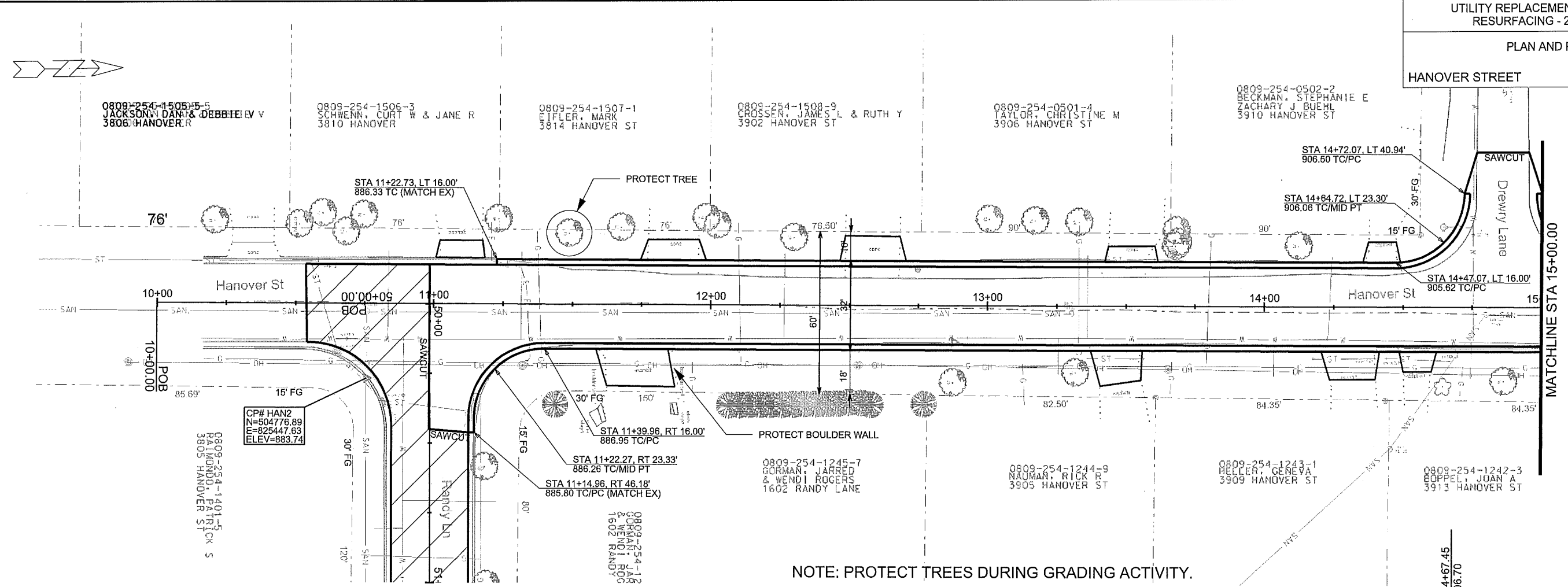
REV. DATE:

ORIGINATOR: CITY OF MADISON, STREETS DIVISION

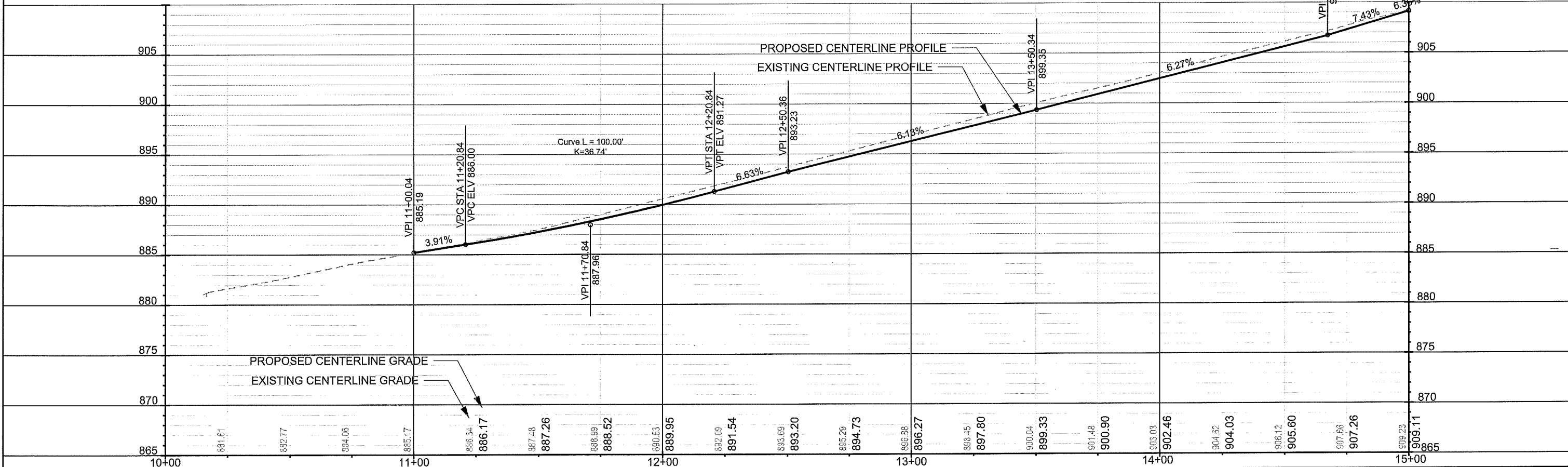


PLAN AND PROFILE

HANOVER STREET CITY OF MADISON



NOTE: PROTECT TREES DURING GRADING ACTIVITY.

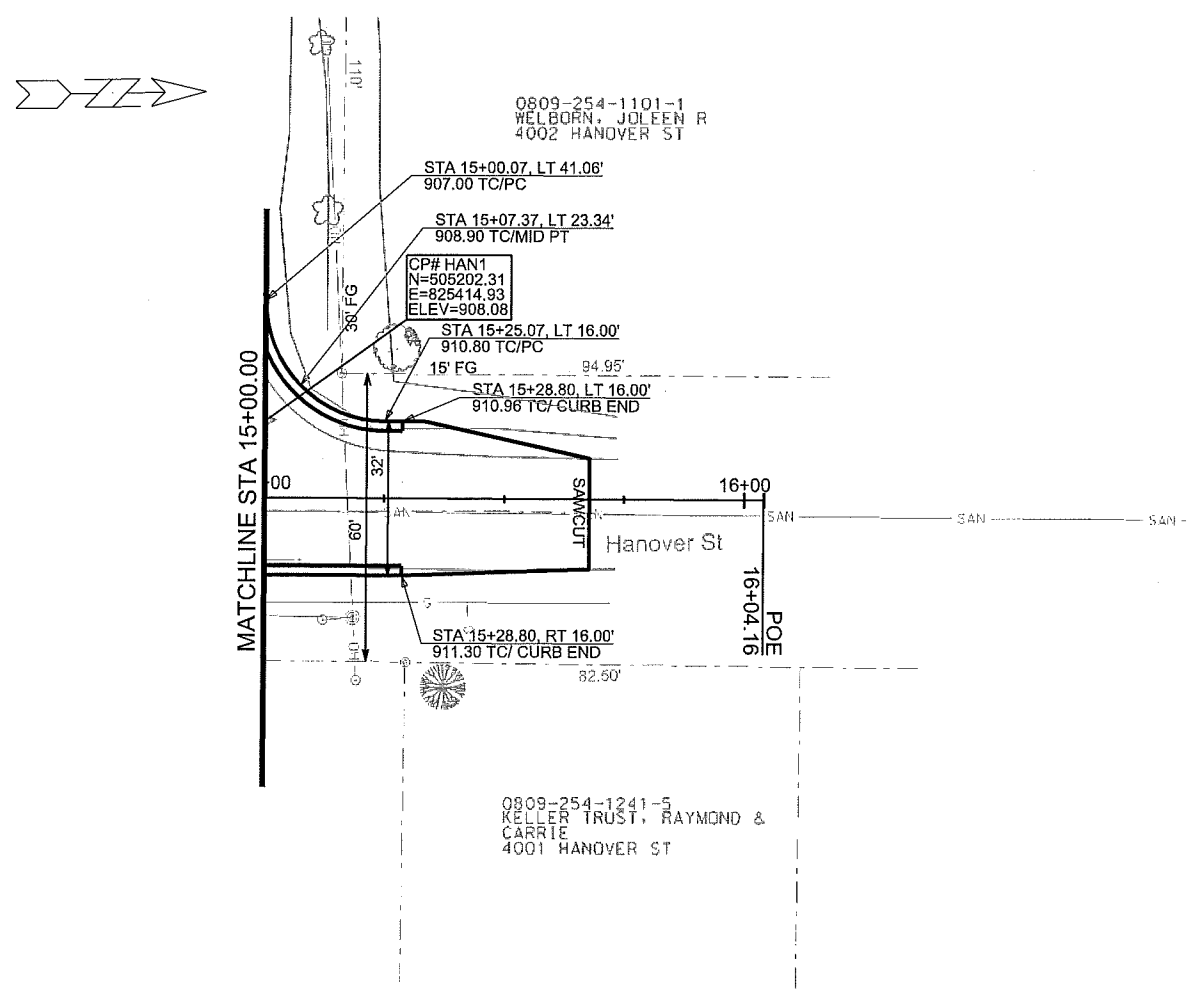


PLOT SCALE:

PLOT NAME:

REV. DATE:

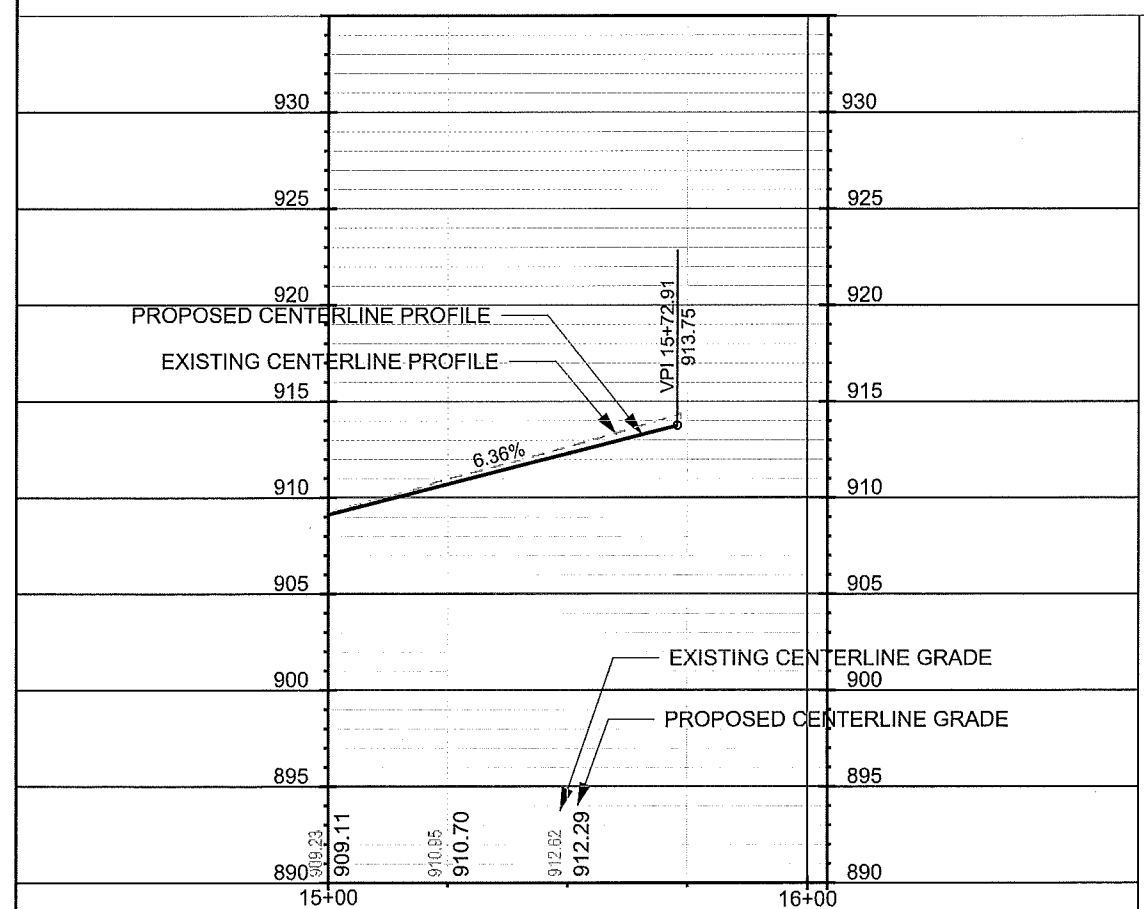
ORIGINATOR: CITY OF MADISON, STREETS DIVISION



PLOT SCALE: \_\_\_\_\_

REV. DATE: \_\_\_\_\_

ORIGINATOR: CITY OF MADISON, STREETS DIVISION



0809-254-1201-9  
OLSON, MARK & KELLY  
1622 RANDY LN

0809-254-1248-1  
RYAN, PATRICK J & JOAN K  
1614 RANDY LANE

0809-254-1247-3  
FREDENBERG, TIMOTHY J  
1610 RANDY LANE

0809-254-1246-5  
MEADOWCROFT, WILLIAM J  
& DIANE KEENE-MEADOWCROFT  
1606 RANDY LN

0809-254-1224-7  
GORMAN, JARRETT  
& WENDI ROBERTSON  
1602 RANDY LANE

0809-254-1427-1  
STORKSON, LAVERNE E  
AND SHIRLEY A STORKSON  
1613 RANDY LANE

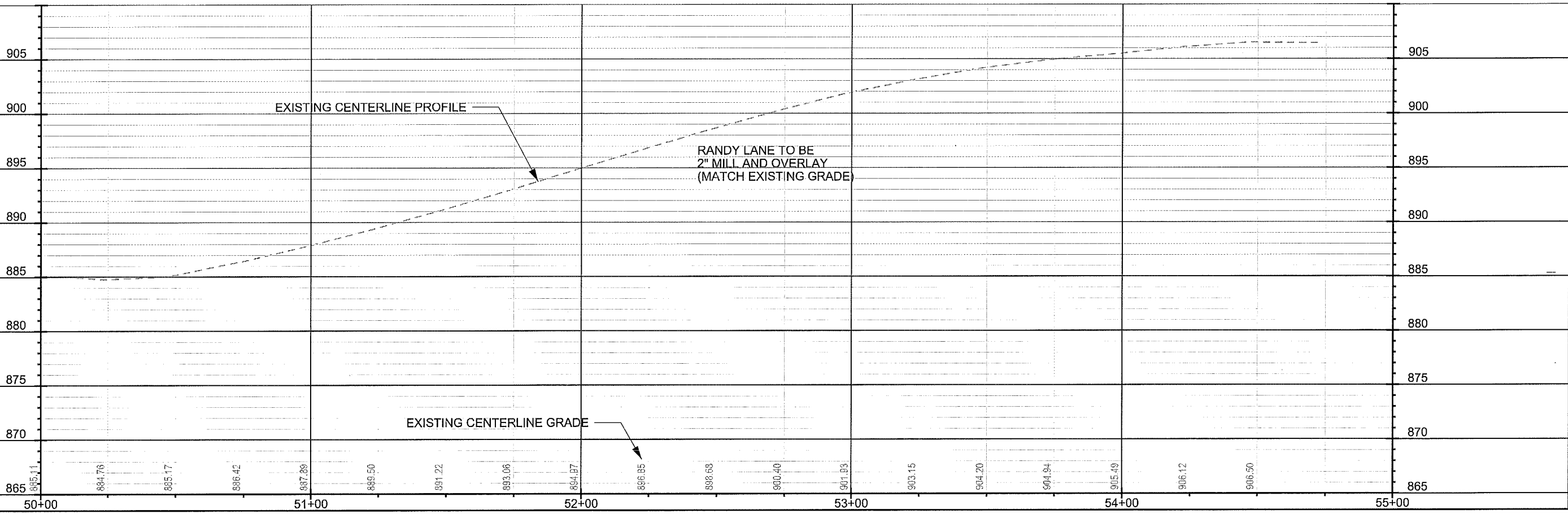
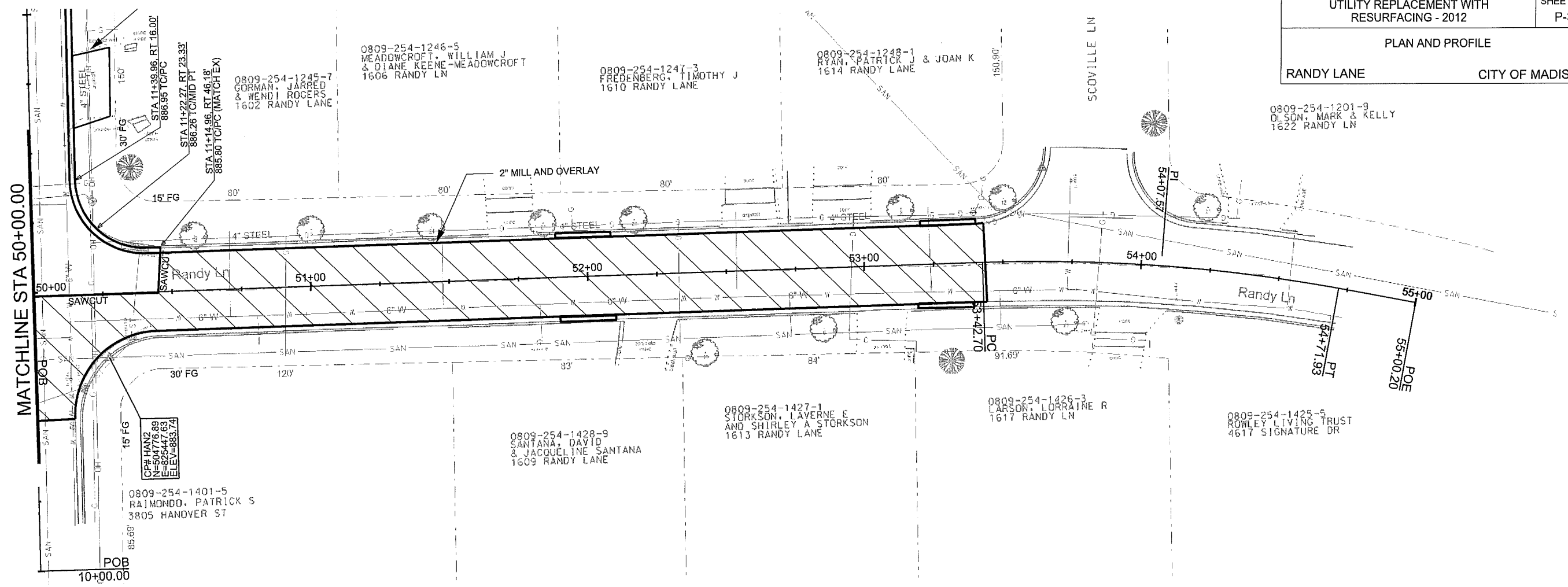
0809-254-1425-3  
LARSON, LORRAINE R  
1617 RANDY LN

0809-254-1425-5  
ROWLEY LIVING TRUST  
4617 SIGNATURE DR

0809-254-1428-9  
SANTANA, DAVID  
& JACQUELINE SANTANA  
1609 RANDY LANE

0809-254-1401-5  
RAIMONDO, PATRICK S  
3805 HANDOVER ST

MATCHLINE STA 50+00.00

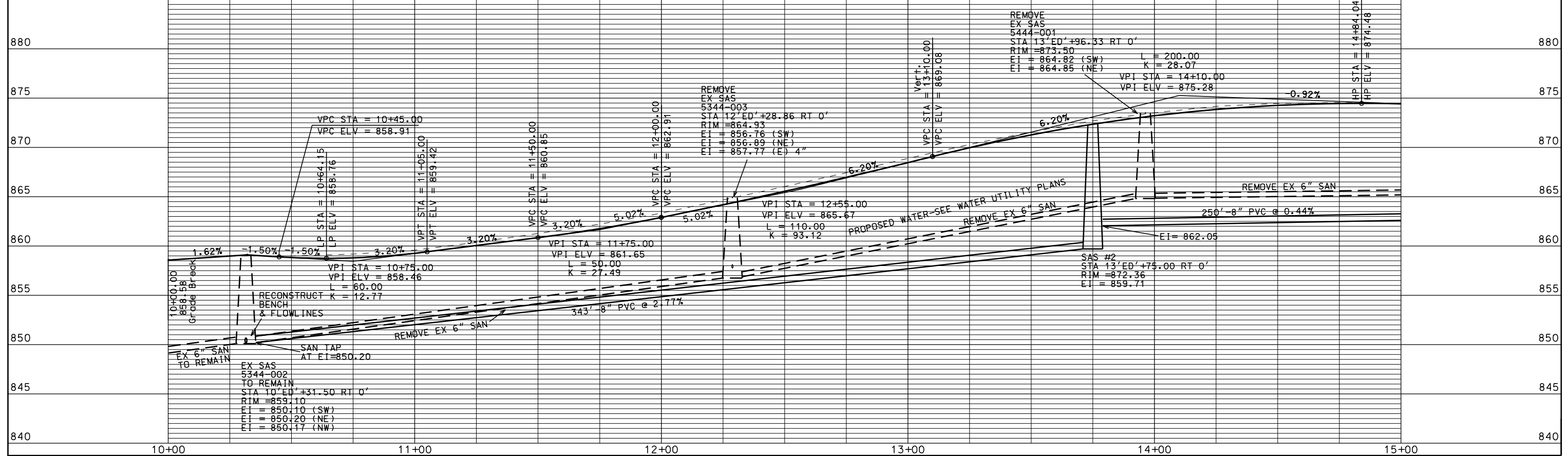
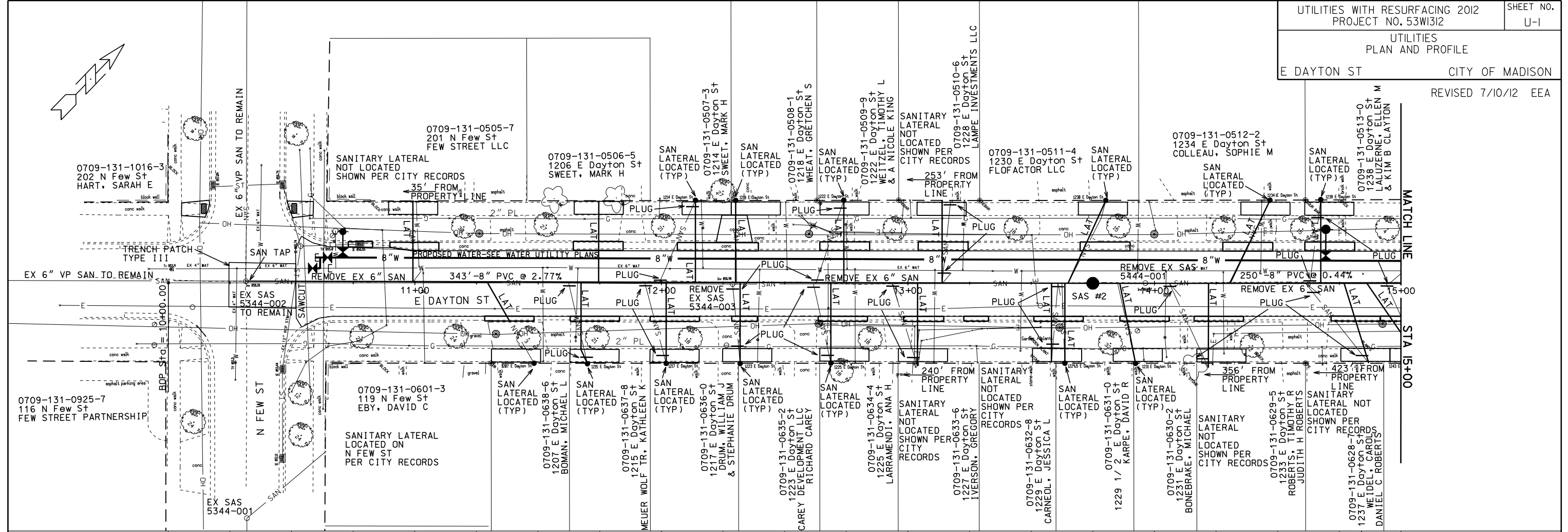


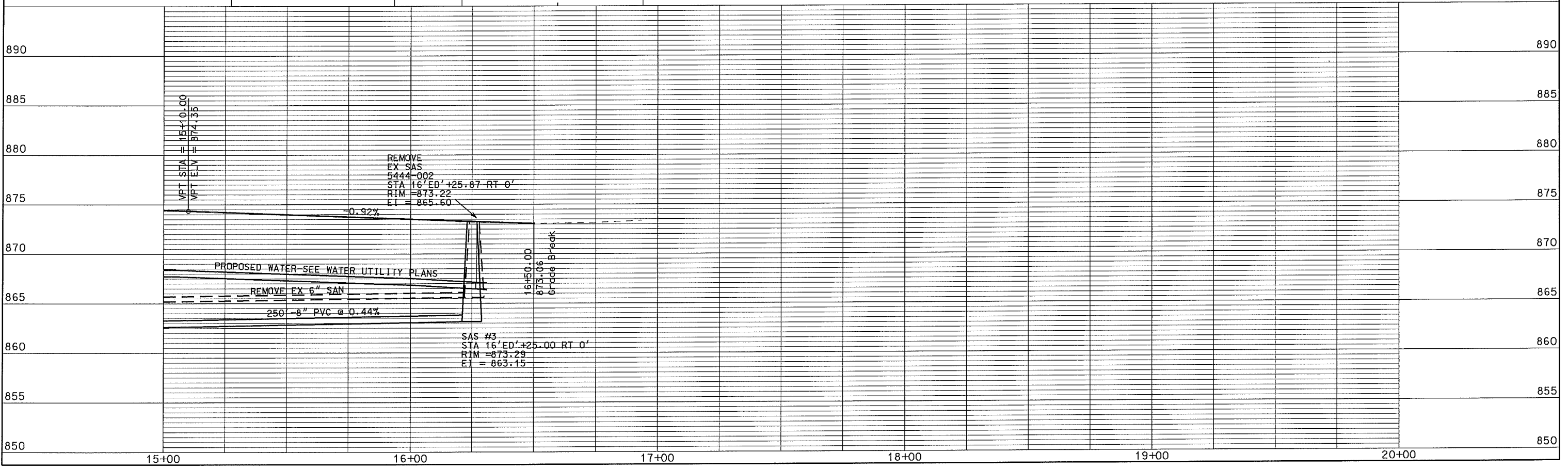
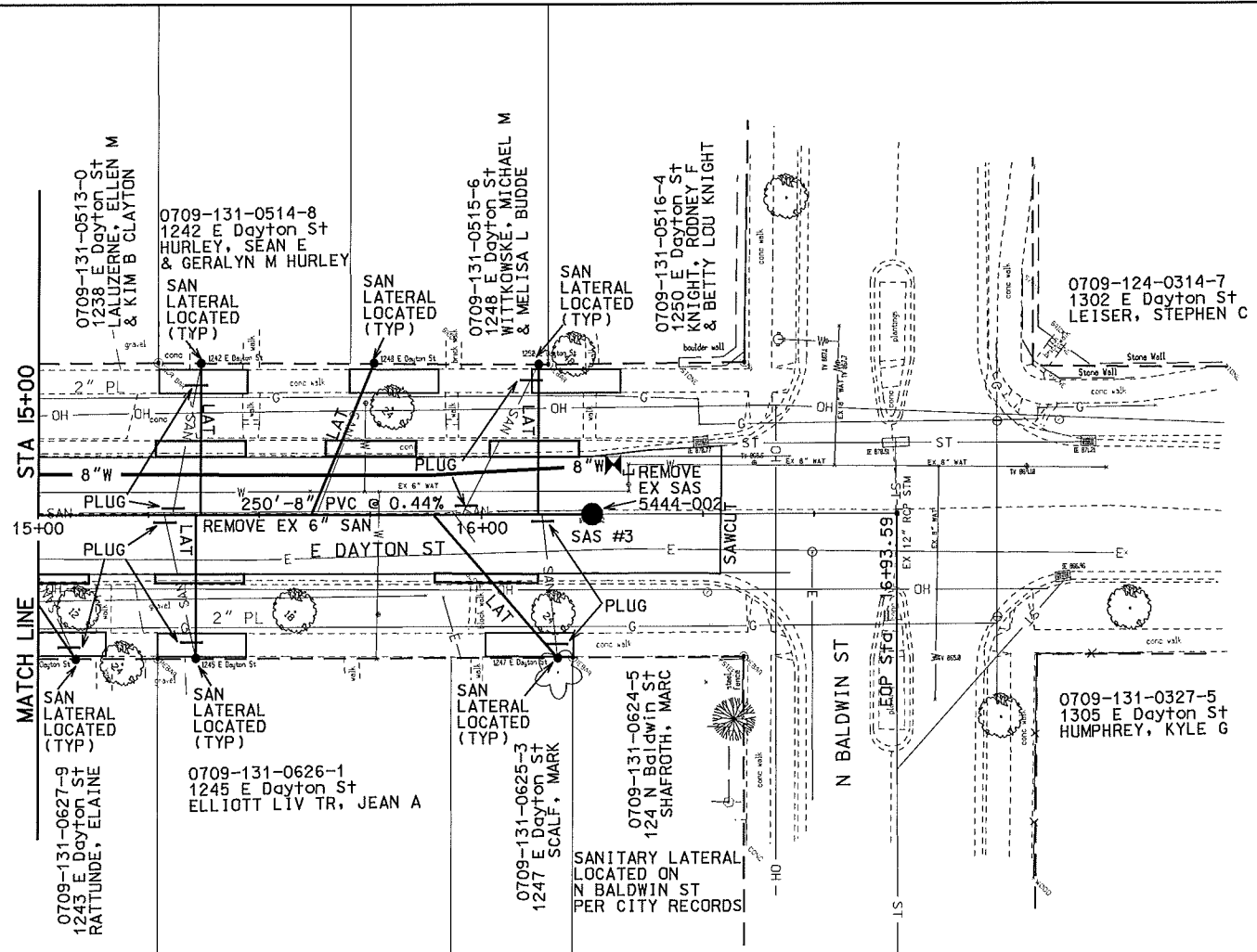
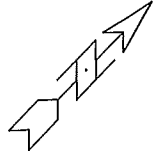
PLOT SCALE:

PLOT NAME:

REV. DATE:

ORIGINATOR: CITY OF MADISON, STREETS DIVISION





PLOT SCALE: \_\_\_\_\_  
 PLOT NAME: \_\_\_\_\_  
 REV. DATE: \_\_\_\_\_

ORIGINATOR: CITY OF MADISON, STREETS DIVISION



# SANITARY SCHEDULE

## ALIGNMENT CODES:

'ED' = E DAYTON ST

\* REVISED 7/10/12

UTILITIES WITH RESURFACING 2012

PROJECT NO. 53W1312

SHEET NO.

U-3

E DAYTON ST  
SANITARY SEWER SCHEDULE

CITY OF MADISON

### PROPOSED SANITARY STRUCTURES

SAS NO.	STATION	LOCATION (OFFSET)	TOP OF CASTING	E.I.	DEPTH	NOTES
* SAS#1	10'ED'+31.50	CL	859.09	850.10	8.99	SAS #1 DELETED FROM THIS CONTRACT
SAS#2	13'ED'+75.00	CL	872.36	859.71	12.65	-
SAS#3	16'ED'+25.00	CL	873.29	863.15	10.14	-
* SAS#4	10'ED'+31.45	LT-29.64	859.78	850.27	9.51	SAS #4 DELETED FROM THIS CONTRACT

### PROPOSED SANITARY PIPES

FROM SAS (DWNSTRM)	TO SAS (UPSTREAM)	EI # (DWNSTRM)	EI # (UPSTRM)	LENGTH (FT)	SLOPE (%)	SIZE (DIA)	PVC TYPE	NOTES:
* EX SAS 5344-002	SAS#2	850.20	859.71	343	2.77%	8"	SDR-35	SAN TAP EX SAS 5344-002
SAS#2	SAS#3	862.05	863.15	250	0.44%	8"	SDR-35	-
* SAS#1	SAS#4	850.15	850.27	29	0.41%	8"	SDR-35	PIPE DELETED FROM CONTRACT

### REMOVE SANITARY STRUCTURES

STRUC.	STATION	LOCATION (OFFSET)	NOTES
* 5344-002	10'ED'+31.50	CL	EX SAS 5344-002 TO REMAIN
5344-003	12'ED'+28.86	CL	-
5444-001	13'ED'+96.33	CL	-
5444-002	16'ED'+25.87	CL	-

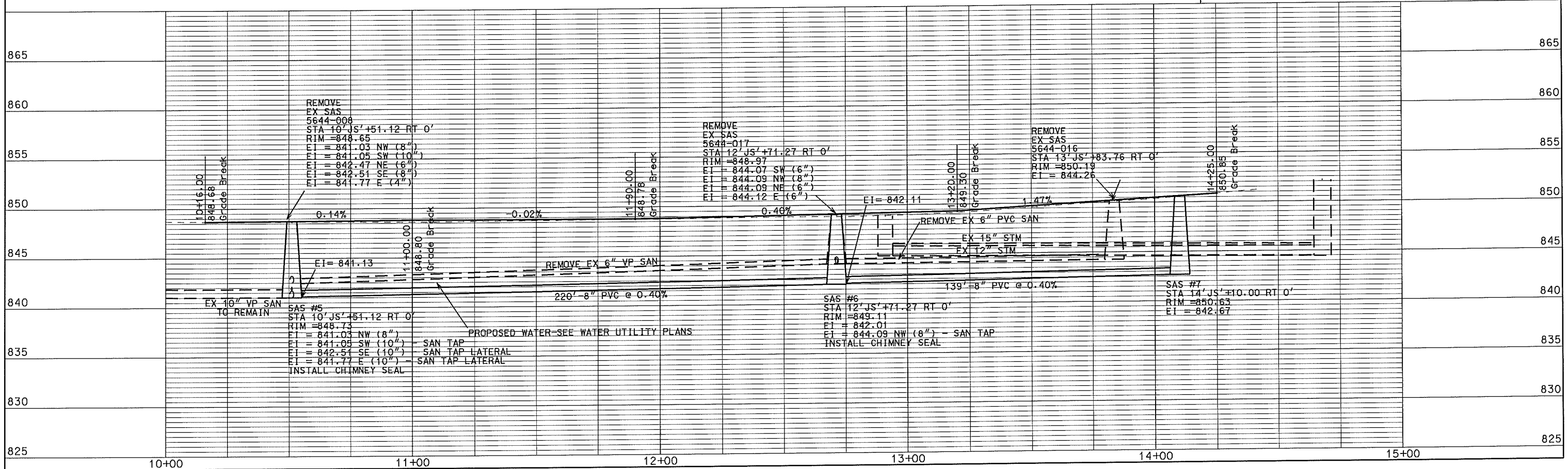
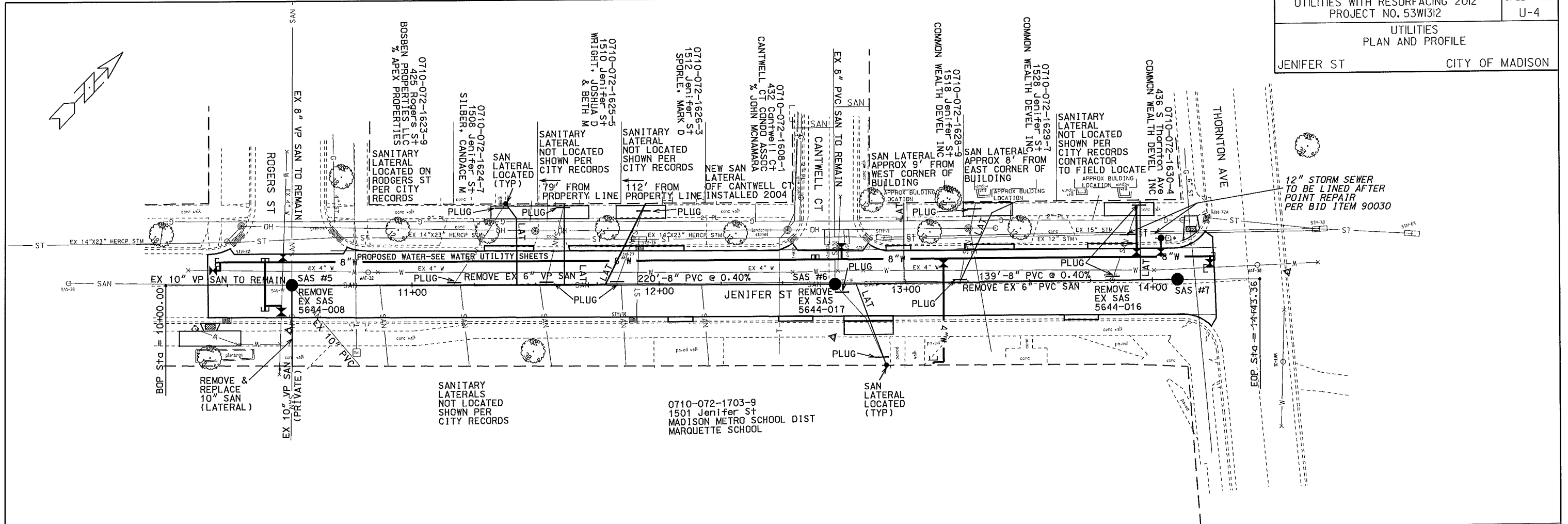
### SANITARY SEWER PIPE REMOVAL

REMOVE FROM	REMOVE TO	LENGTH (FT)	PAID (Y/N)	SIZE	TYPE	NOTES
5344-002	5344-003	197	N	6"	VP	-
5344-003	5444-001	167	N	6"	VP	-
5444-001	5444-002	229	N	6"	VP	-

PLOT SCALE: ---

PLOT NAME: ---

REV. DATE: ---



PLOT SCALE: \_\_\_\_\_

PLOT NAME: \_\_\_\_\_

REV. DATE: \_\_\_\_\_

ORIGINATOR: C:\X\_DE\MADISON\_STREETS\_DIVISION

# SANITARY SCHEDULE

## ALIGNMENT CODES:

'JS' = JENIFER ST

UTILITIES WITH RESURFACING 2012  
PROJECT NO. 53W1312

SHEET NO.  
U-5

JENIFER ST  
SANITARY SEWER SCHEDULE CITY OF MADISON

### PROPOSED SANITARY STRUCTURES

SAS NO.	STATION	LOCATION (OFFSET)	TOP OF CASTING	E.I.	DEPTH	NOTES
SAS#5	10'JS'+51.12	CL	848.73	841.03	7.70	-
SAS#6	12'JS'+71.27	CL	849.11	842.01	7.10	INSTALL CHIMNEY SEAL
SAS#7	14'JS'+10.00	CL	850.63	842.67	7.96	INSTALL CHIMNEY SEAL

### PROPOSED SANITARY PIPES

FROM SAS (DWNSTRM)	TO SAS (UPSTREAM)	EI # (DWNSTRM)	EI # (UPSTRM)	LENGTH (FT)	SLOPE (%)	SIZE (DIA)	PVC TYPE	NOTES:
SAS#5	SAS#6	841.13	842.01	220	0.40%	8"	SDR-35	-
SAS#6	SAS#7	842.11	842.67	139	0.40%	8"	SDR-35	-

### REMOVE SANITARY STRUCTURES

STRUC.	STATION	LOCATION (OFFSET)	NOTES
5644-008	10'JS'+51.12	CL	-
5644-017	12'JS'+71.27	CL	-
5644-016	13'JS'+83.76	CL	-

### SANITARY SEWER PIPE REMOVAL

ABANDON FROM	ABANDON TO	LENGTH (FT)	PAID (Y/N)	SIZE	TYPE	NOTES
5644-008	5644-017	220	N	6"	VP	-
5644-017	5644-016	112	N	6"	PVC	-

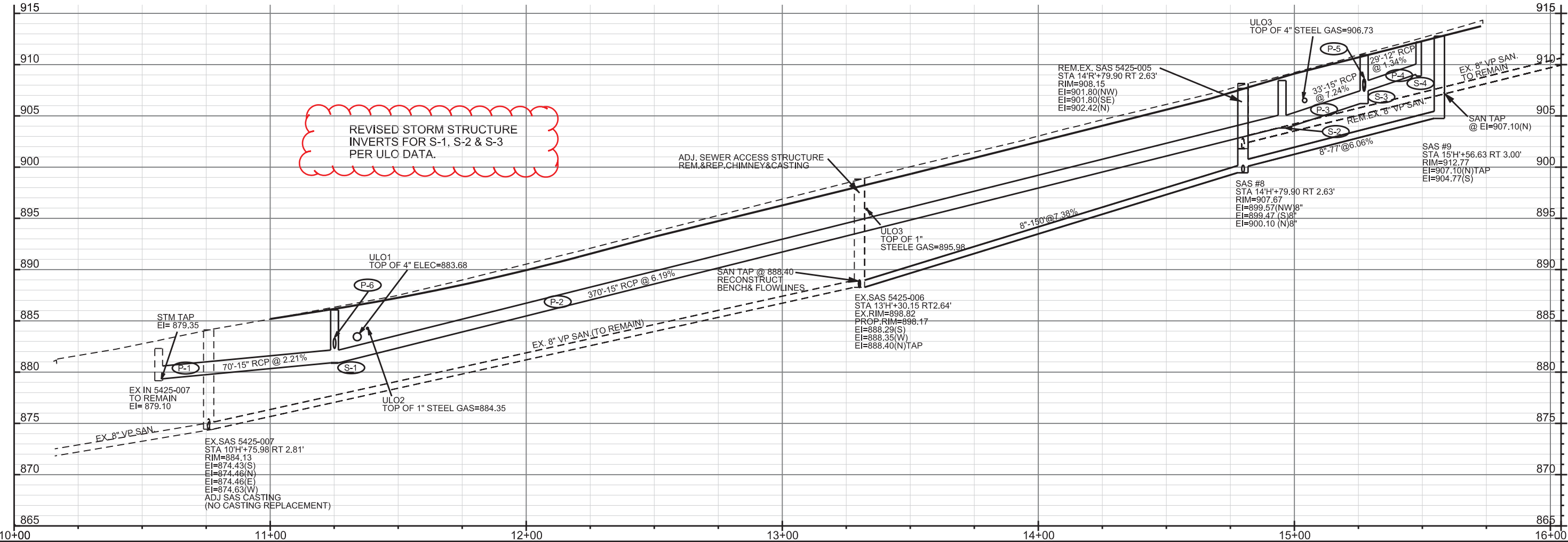
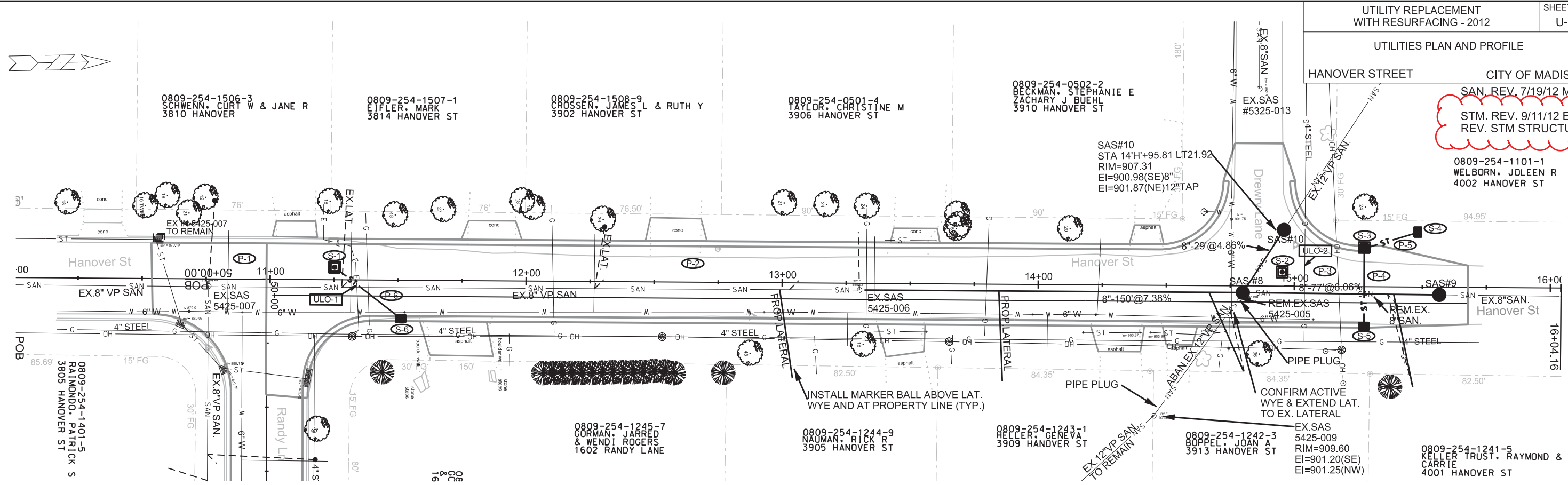
PLOT SCALE: ---

PLOT NAME: ---

REV. DATE: ---

UTILITIES PLAN AND PROFILE

HANOVER STREET CITY OF MADISON  
 SAN. REV. 7/19/12 MDM  
 STM. REV. 9/11/12 EEA  
 REV. STM STRUCTURES



PLOT SCALE: \_\_\_\_\_  
 PLOT NAME: \_\_\_\_\_  
 REV. DATE: \_\_\_\_\_  
 ORIGINATOR: CITY OF MADISON, STREETS DIVISION



# SANITARY SCHEDULE

## ALIGNMENT CODES:

'H'= Hanover Street  
'R'= Randy Lane

UTILITY REPLACEMENTS WITH RESURFACING PROJECT NO. 53W1312	SHEET NO. U-8
SANITARY SEWER SCHEDULE	
CITY OF MADISON	
*SAN.REVISED 7/19/12 MDM	

### PROPOSED SANITARY STRUCTURES

SAS NO.	STATION	LOCATION (OFFSET)	TOP OF CASTING	E.I.	DEPTH	NOTES
SAS#8	14'H'+79.90	RT-2.63	907.67	899.47	8.20	
SAS#9	15'H'+56.63	RT-3.00	<b>912.77</b>	<b>904.77</b>	<b>8.00</b>	
SAS#10	14'H'+95.81	LT-21.92	907.31	900.98	6.33	

### PROPOSED SANITARY PIPES

FROM SAS (DWNSTRM)	TO SAS (UPSTREAM)	EI # (DWNSTRM)	EI # (UPSTRM)	LENGTH (FT)	SLOPE (%)	SIZE (DIA)	PVC TYPE
EX.SAS 5425-006	SAS#8	888.40	899.47	150	7.38%	8"	SDR-35
* SAS#8	SAS#9	<b>900.10</b>	<b>904.77</b>	77	<b>6.06%</b>	8"	SDR-35
SAS#8	SAS#10	899.57	900.98	29	4.86%	8"	SDR-35

### SANITARY PIPE ABANDONMENTS

FROM STRUCTURE	TO STRUCTURE	LENGTH (FT)	NOTES
SAS 5425-005	SAS 5425-009	59	PIPE PLUGS BOTH ENDS

### SANITARY SEWER PIPE REMOVALS

REMOVE FROM	REMOVE TO	LENGTH	PAID (Y/N)	NOTES
SAS 5425-005	15'H'+56.63 RT 3.00	77	N	
SAS 5425-005	14'H'+95.81 LT 21.92	29	N	

### ADJUST SANITARY STRUCTURES

STRUCTURE	STATION	LOCATION (OFFSET)	EX. ADJ.HT (FT)	EX. RIM	PROP. RIM	NOTES
SAS 5425-006	13'H'+30.15	RT-2.64	1.500	898.82	898.17	ADJ SAS(>9" ADJ), REPLACE CASTING
SAS 5425-007	10'H'+75.98	RT-2.81	0.670	884.13	884.13	ADJ SAS CASTING
SAS 5425-011	51'R'+82.01	RT-23.16	1.000	893.43	893.43	ADJ SAS CASTING, REPLACE CASTING
SAS 5425-015	53'R'+47.23	LT-19.45	0.167	904.13	904.13	ADJ SAS CASTING, REPLACE CASTING
SAS 5425-022	53'R'+80.51	RT-22.19	1.000	905.13	905.13	ADJ SAS CASTING, REPLACE CASTING

### REMOVE SEWER ACCESS STRUCTURES

STRUCTURE	STATION	LOCATION (OFFSET)	NOTES
SAS 5425-005	14'H'+79.90	RT-2.63	

# STORM SEWER SCHEDULE

## ALIGNMENT CODES:

"HS"= HANOVER ST

\* REVISED 9/11/12 EEA

UTILITIES WITH RESURFACING - 2012

SHEET NO.

PROJECT NO. 53W1312

U-9

HANOVER ST  
STORM SEWER SCHEDULE

CITY OF MADISON

### STRUCTURES

STRUC. NO.	STATION	LOCATION (OFFSET)	TYPE	TOP OF CASTING	E.I.	DEPTH	NOTES
* S-1	11'HS'+25.00	LT-5.00	3X3 SAS	886.07	<b>880.90</b>	<b>5.17</b>	W/ R-1550
* S-2	14'HS'+95.00	LT-5.00	3X3 SAS	908.45	<b>903.81</b>	<b>4.64</b>	W/ R-1550
* S-3	15'HS'+27.00	LT-15.50	3X3 SAS	910.96	<b>906.20</b>	<b>4.76</b>	W/ R-3067-7004
S-4	15'HS'+50.00	LT-21.00	H INLET	912.20	909.00	3.20	W/ R-1878-B7G
S-5	15'HS'+27.00	RT-15.50	H INLET	911.30	907.80	3.50	W/ R-3067-7004
S-6	11'HS'+51.00	RT-15.50	H INLET	887.23	883.73	3.50	W/ R-3067-7004

### PIPES

PIPE NO.	FROM (DNSTM)	TO (UPSTM)	LGTH (FT)	DISCH. E.I.	INLET E.I.	SLOPE (%)	PIPE SIZE	TYPE	NOTES
* P-1	EX	S-1	70	879.35	<b>880.90</b>	<b>2.21%</b>	15"	RCP	-
* P-2	S-1	S-2	370	<b>880.90</b>	<b>903.81</b>	<b>6.19%</b>	15"	RCP	-
* P-3	S-2	S-3	33	<b>903.81</b>	<b>906.20</b>	7.24%	15"	RCP	-
* P-4	S-3	S-5	29	907.41	907.80	1.34%	12"	RCP	<b>NCM</b>
* P-5	S-3	S-4	22	907.41	909.00	7.23%	12"	RCP	<b>NCM</b>
* P-6	S-1	S-6	33	882.32	883.73	4.27%	12"	RCP	<b>NCM</b>

### ULO'S

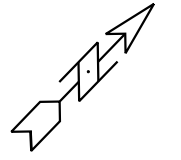
NO.	STATION	LOCATION (OFFSET)	TYPE	NOTES:
ULO-1	11'HS'+34.00	RT-2.00	ELEC	-
ULO-2	15'HS'+04.00	LT-8.45	GAS	-

### SPECIFIC NOTES

### STANDARD NOTES:

- ABBREVIATIONS: AE = APRON ENDWALL; RCP = REINFORCED CONCRETE PIPE; HERCP = HORIZONTAL ELLIPTICAL REINFORCED CONCRETE PIPE; DNA = DOES NOT APPLY; SAS = SEWER ACCESS STRUCTURE; LP = LOW POINT INLET STRUCTURE; FP = FIELD Poured STRUCTURE; TR = TOP OF CONCRETE ROOF; NCM = NO CROWN MATCH FOR PIPES
- APPROXIMATE DISCHARGE E.I. GIVEN, ADJUST E.I. AND PIPE SLOPE IN THE FIELD.
- TOP OF CASTING GRADE GIVEN IS THE TOP OF CURB FOR INLET STRUCTURES AND THE FLOWLINE OF THE CLOSED CASTING FOR SAS's.
- TOP OF CONCRETE ROOF (TR) IS 1.25' BELOW TOP OF CASTING UNLESS OTHERWISE NOTED.
- ALL REINFORCED CONCRETE PIPES TO BE CLASS III UNLESS OTHERWISE NOTED.
- SURVEYOR TO CONFIRM THAT ALL INLET STATION / OFFSETS LINE UP WITH PROPOSED CURB AND GUTTER.
- ALL STRUCTURES CALLED OUT AS FIELD Poured SHALL BE FIELD Poured. ALL OTHER STRUCTURES (NOT INDICATED AS FIELD Poured) SHALL BE SUBMITTED TO CITY ENGINEERING FOR APPROVAL IF PRECAST STRUCTURES ARE PREFERRED. CONTACT ELIA E ACOSTA OF CITY ENGINEERING AT (608) 266-4096 FOR PRECAST APPROVALS, OR FAX SHOP DRAWINGS TO (608)264-9275.

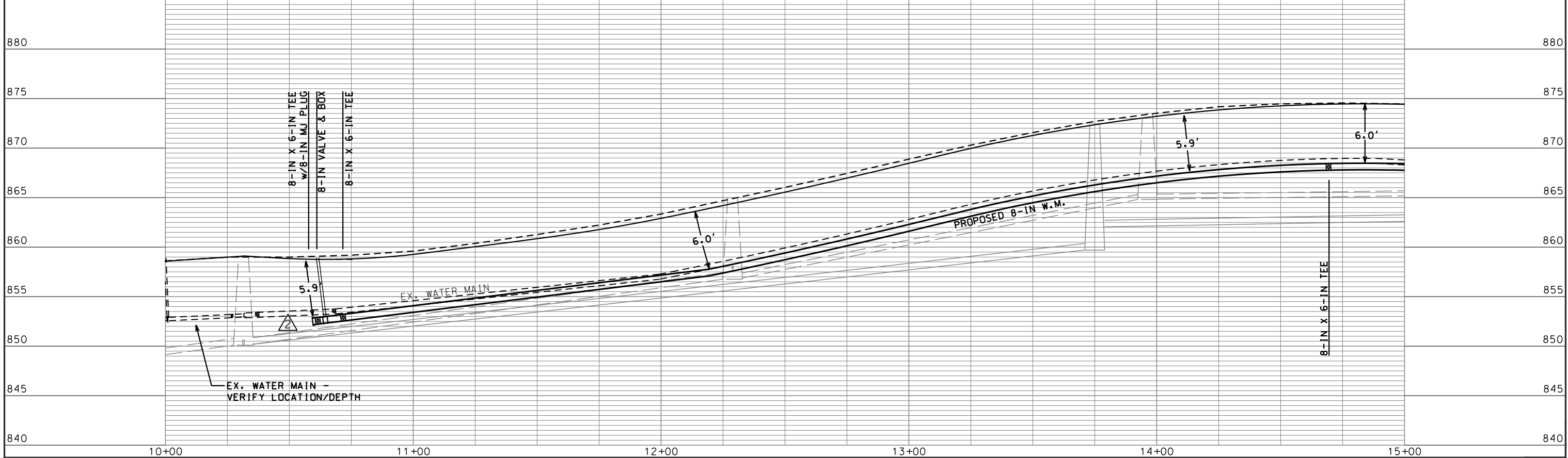
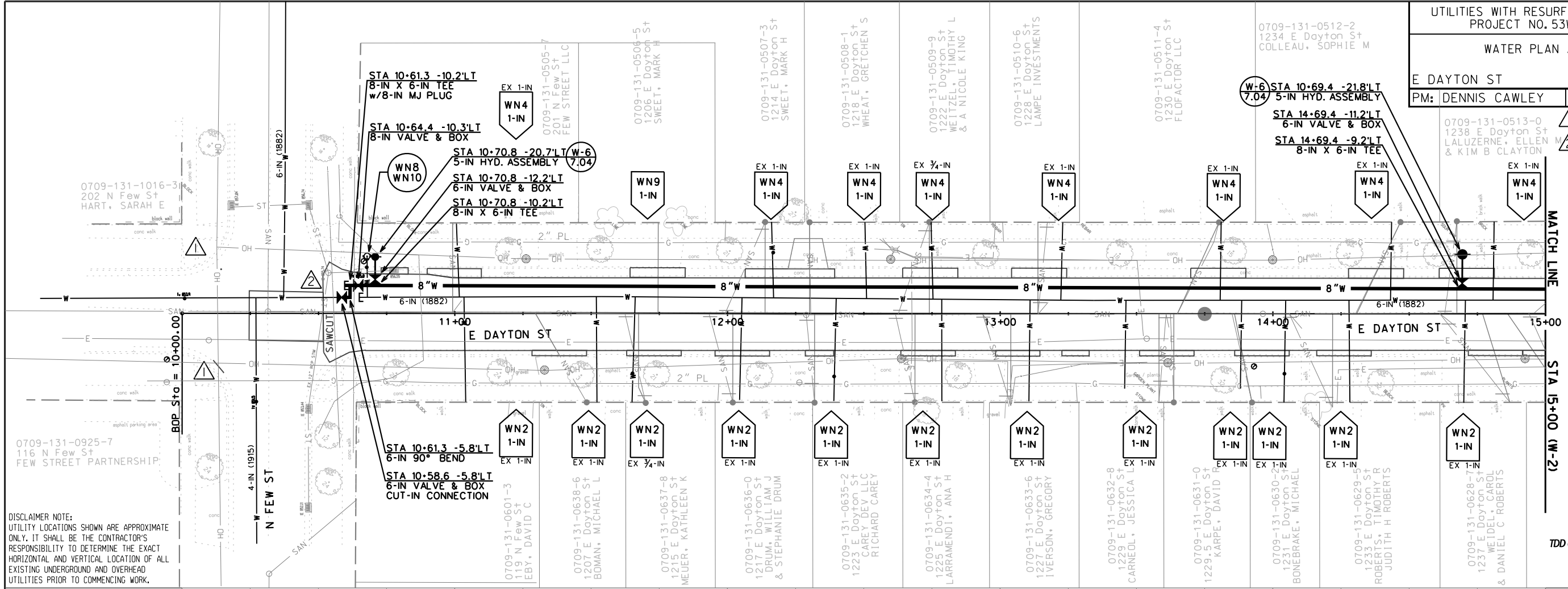
REVISION 5/18/2012  
REVISION 7/11/2012



TO OBTAIN LOCATION OF PARTICIPANTS' UNDERGROUND FACILITIES BEFORE YOU DIG IN WISCONSIN

**CALL DIGGERS HOTLINE 811**  
or 1-800-242-8511  
**TOLL FREE**  
FAX-A-LOCATE 1-800-338-3860  
TDD (FOR HEARING IMPAIRED) 1-800-542-2289

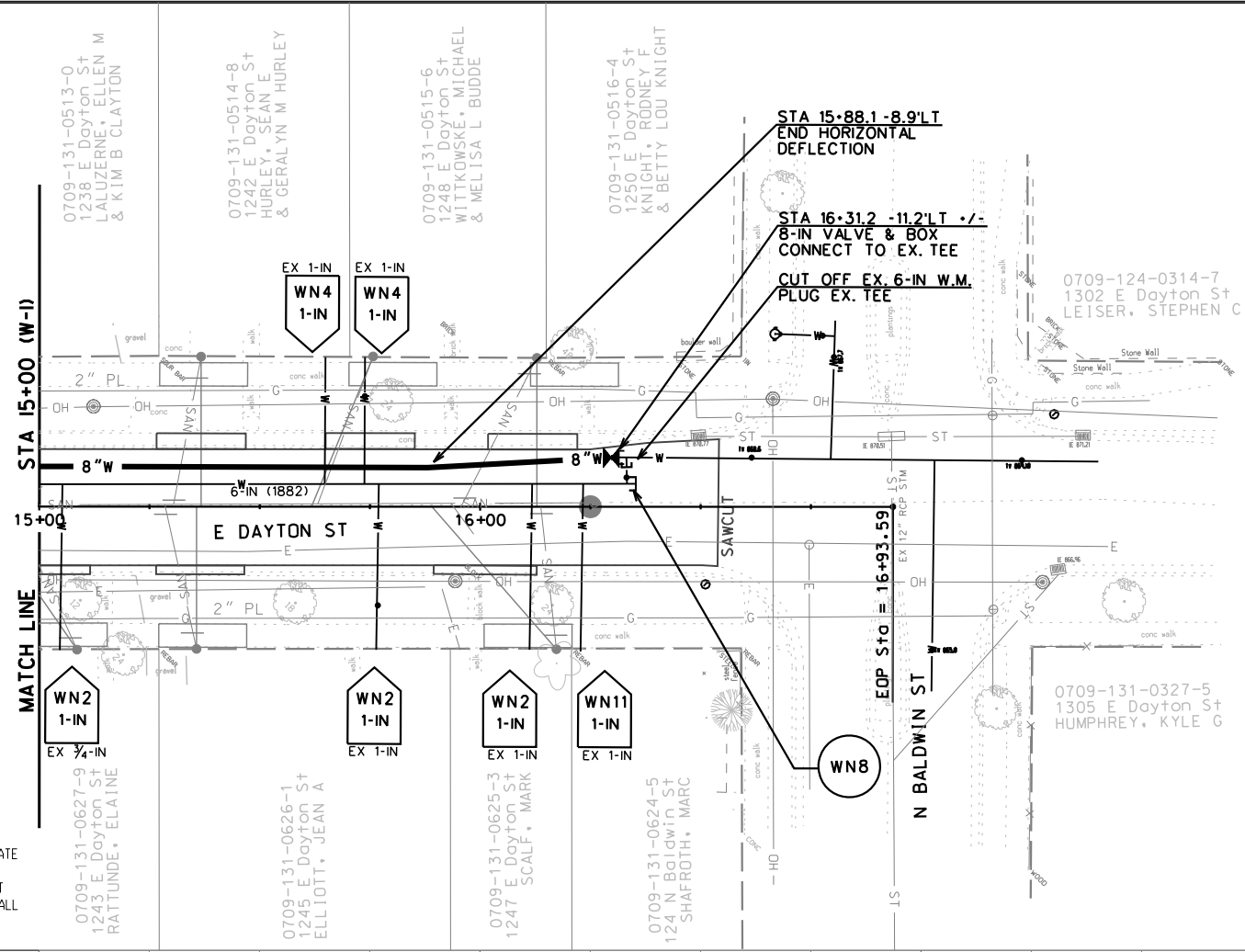
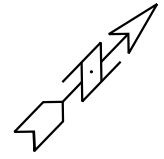
WIS. STATUTE 182.0175 (1974)  
REQUIRES MIN. OF 3 WORK DAYS NOTICE BEFORE YOU EXCAVATE.



ORIGINATOR: CITY OF MADISON, STREETS DIVISION  
 PLOT SCALE:  
 PLOT NAME:  
 REV. DATE:

DISCLAIMER NOTE:  
UTILITY LOCATIONS SHOWN ARE APPROXIMATE ONLY. IT SHALL BE THE CONTRACTOR'S RESPONSIBILITY TO DETERMINE THE EXACT HORIZONTAL AND VERTICAL LOCATION OF ALL EXISTING UNDERGROUND AND OVERHEAD UTILITIES PRIOR TO COMMENCING WORK.





DISCLAIMER NOTE:  
UTILITY LOCATIONS SHOWN ARE APPROXIMATE ONLY. IT SHALL BE THE CONTRACTOR'S RESPONSIBILITY TO DETERMINE THE EXACT HORIZONTAL AND VERTICAL LOCATION OF ALL EXISTING UNDERGROUND AND OVERHEAD UTILITIES PRIOR TO COMMENCING WORK.

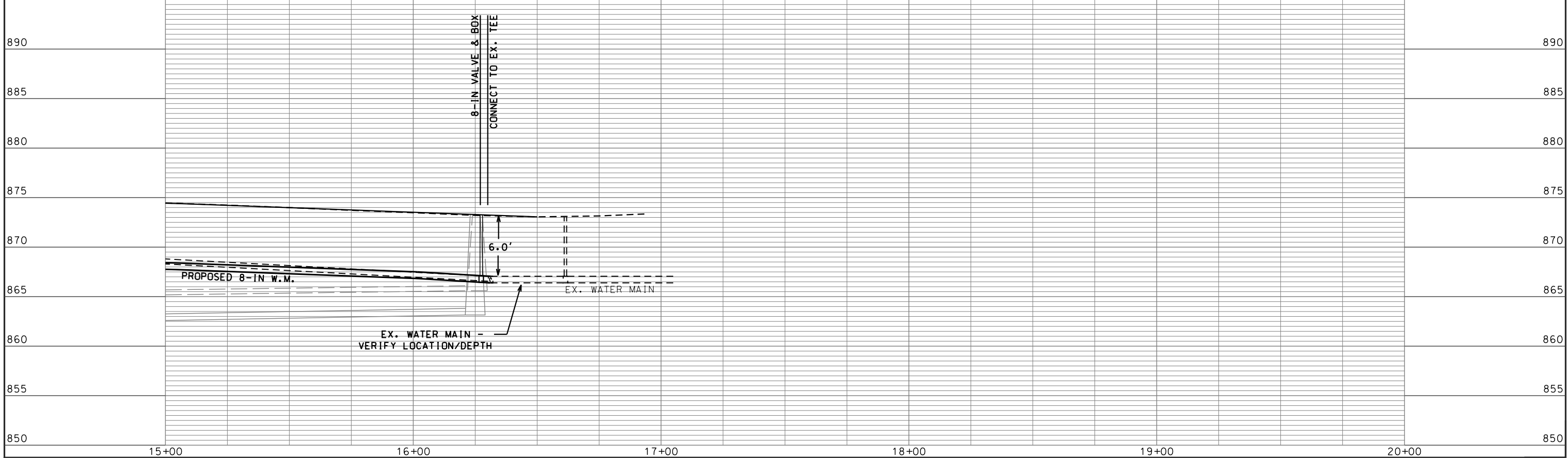


TO OBTAIN LOCATION OF PARTICIPANTS' UNDERGROUND FACILITIES BEFORE YOU DIG IN WISCONSIN

**CALL DIGGERS HOTLINE**  
**811**  
or 1-800-242-8511  
**TOLL FREE**  
FAX-A-LOCATE 1-800-338-3860  
TDD (FOR HEARING IMPAIRED) 1-800-542-2289

WIS. STATUTE 182.0175 (1974)  
REQUIRES MIN. OF 3 WORK DAYS NOTICE BEFORE YOU EXCAVATE.

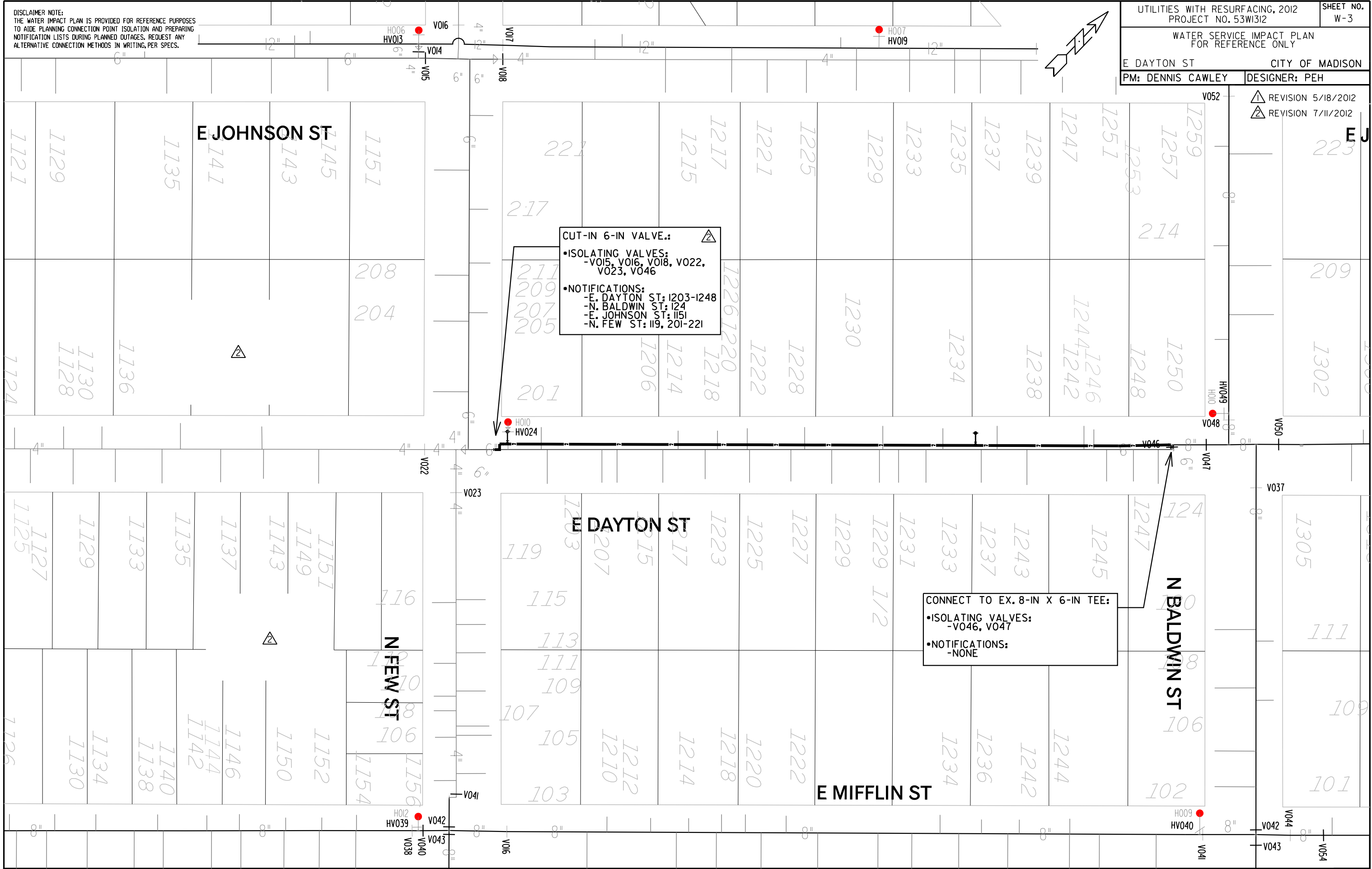
PLOT NAME: .....  
PLOT SCALE: .....  
REV. DATE: .....



ORIGINATOR: CITY OF MADISON, STREETS DIVISION

DISCLAIMER NOTE:  
 THE WATER IMPACT PLAN IS PROVIDED FOR REFERENCE PURPOSES  
 TO AIDE PLANNING CONNECTION POINT ISOLATION AND PREPARING  
 NOTIFICATION LISTS DURING PLANNED OUTAGES. REQUEST ANY  
 ALTERNATIVE CONNECTION METHODS IN WRITING, PER SPECS.

REVISION 5/18/2012  
 REVISION 7/11/2012



PLOT SCALE:

PLOT NAME:

REV. DATE:

ORIGINATOR: CITY OF MADISON, STREETS DIVISION

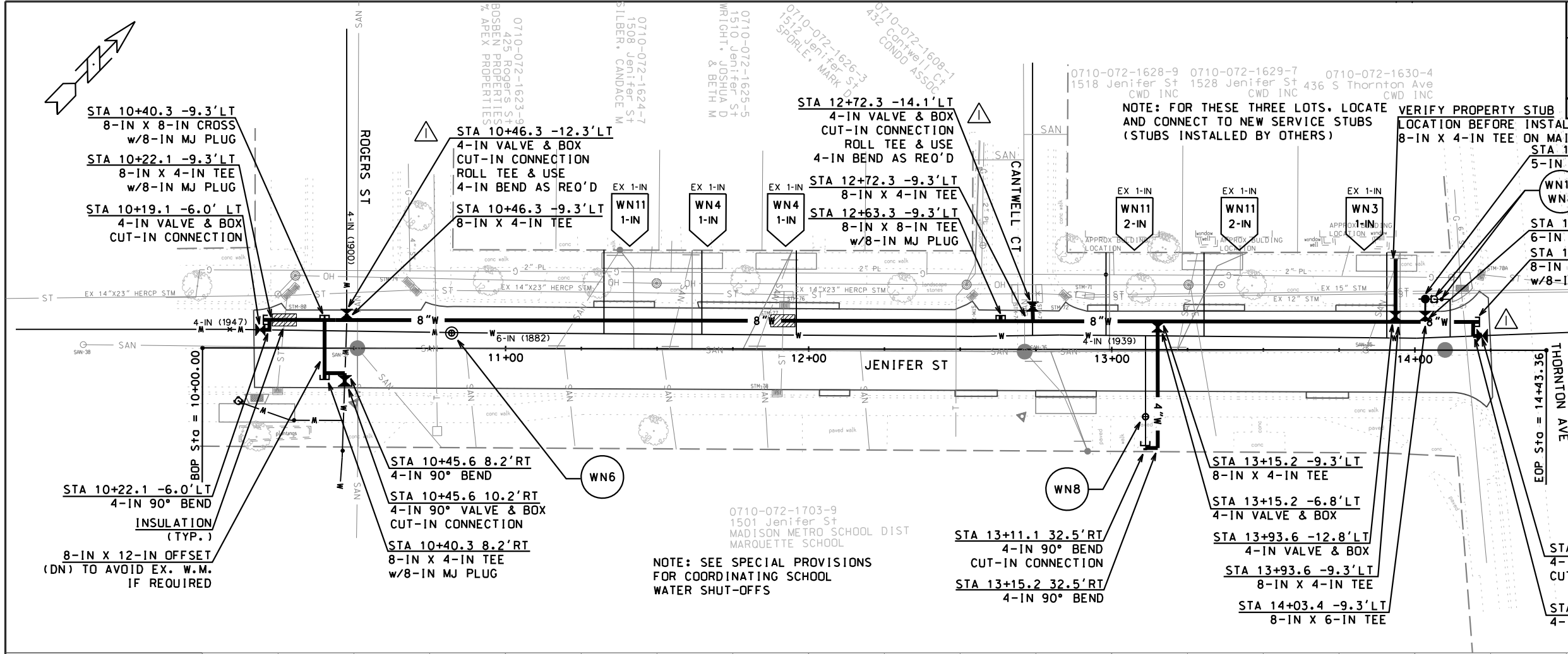
REVISION 5/18/2012

DISCLAIMER NOTE:  
UTILITY LOCATIONS SHOWN ARE APPROXIMATE ONLY. IT SHALL BE THE CONTRACTOR'S RESPONSIBILITY TO DETERMINE THE EXACT HORIZONTAL AND VERTICAL LOCATION OF ALL EXISTING UNDERGROUND AND OVERHEAD UTILITIES PRIOR TO COMMENCING WORK.

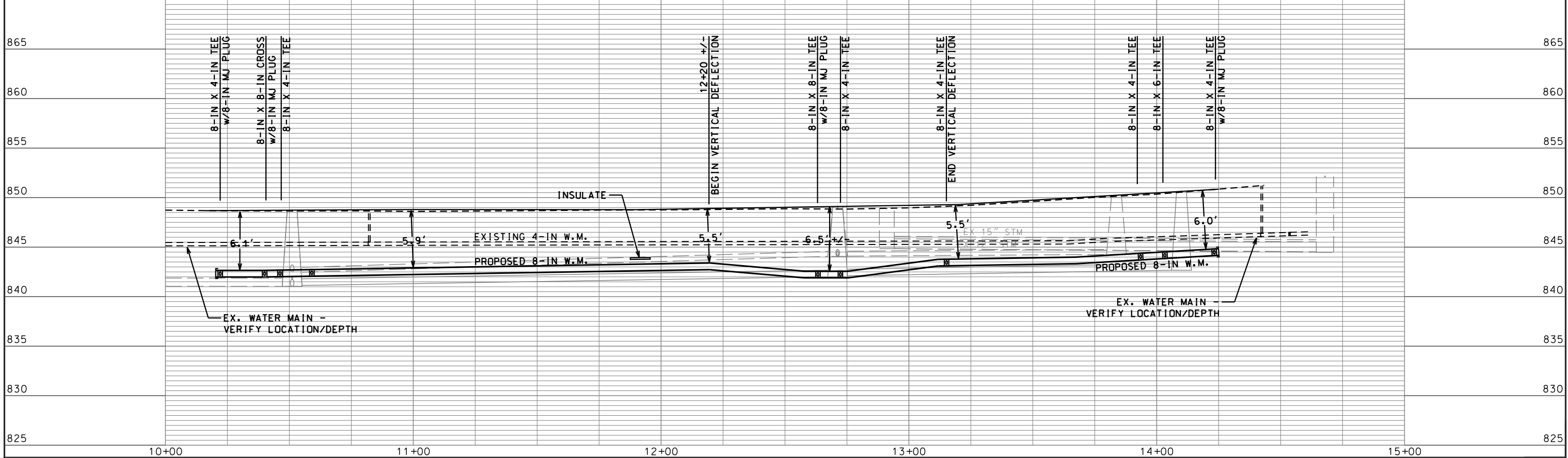


TO OBTAIN LOCATION OF PARTICIPANTS' UNDERGROUND FACILITIES BEFORE YOU DIG IN WISCONSIN

**CALL DIGGERS HOTLINE 811**  
or 1-800-242-8511  
TOLL FREE  
FAX-A-LOCATE 1-800-338-3860  
TDD (FOR HEARING IMPAIRED) 1-800-542-2289  
WIS. STATUTE 182.0175 (1974)  
REQUIRES MIN. OF 3 WORK DAYS NOTICE BEFORE YOU EXCAVATE.

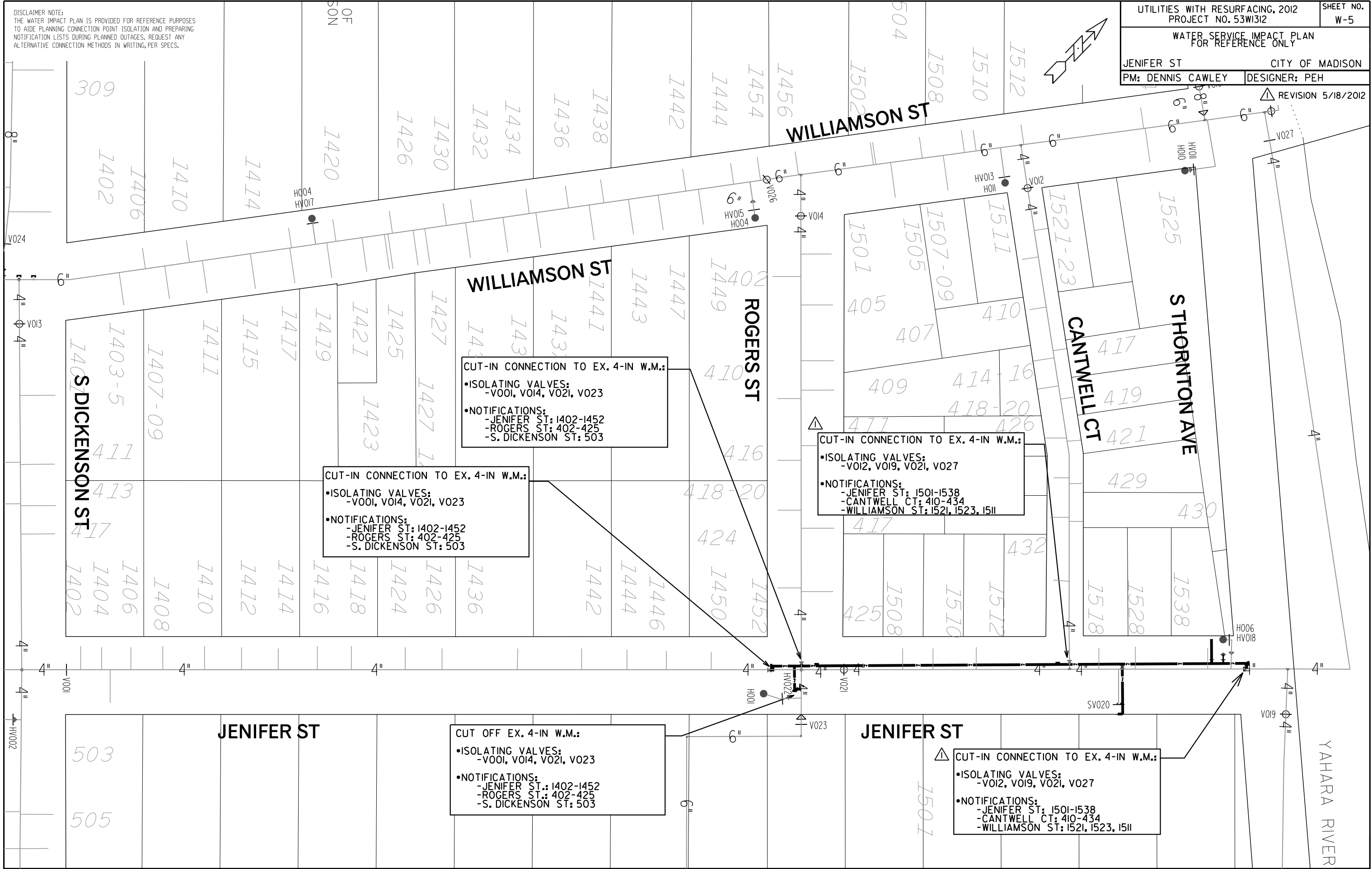


NOTE: SEE SPECIAL PROVISIONS FOR COORDINATING SCHOOL WATER SHUT-OFFS



PLOT SCALE: ..... PLOT NAME: ..... REV. DATE: ..... ORIGINATOR: CITY OF MADISON, STREETS DIVISION

DISCLAIMER NOTE:  
THE WATER IMPACT PLAN IS PROVIDED FOR REFERENCE PURPOSES  
TO AIDE PLANNING CONNECTION POINT ISOLATION AND PREPARING  
NOTIFICATION LISTS DURING PLANNED OUTAGES. REQUEST ANY  
ALTERNATIVE CONNECTION METHODS IN WRITING, PER SPECS.



**CUT-IN CONNECTION TO EX. 4-IN W.M.:**

- ISOLATING VALVES:  
-V001, VOI4, V021, V023
- NOTIFICATIONS:  
-JENIFER ST: 1402-1452  
-ROGERS ST: 402-425  
-S. DICKENSON ST: 503

**CUT-IN CONNECTION TO EX. 4-IN W.M.:**

- ISOLATING VALVES:  
-V001, VOI4, V021, V023
- NOTIFICATIONS:  
-JENIFER ST: 1402-1452  
-ROGERS ST: 402-425  
-S. DICKENSON ST: 503

**CUT-IN CONNECTION TO EX. 4-IN W.M.:**

- ISOLATING VALVES:  
-VOI2, VOI9, V021, V027
- NOTIFICATIONS:  
-JENIFER ST: 1501-1538  
-CANTWELL CT: 410-434  
-WILLIAMSON ST: 1521, 1523, 1511

**CUT OFF EX. 4-IN W.M.:**

- ISOLATING VALVES:  
-V001, VOI4, V021, V023
- NOTIFICATIONS:  
-JENIFER ST: 1402-1452  
-ROGERS ST: 402-425  
-S. DICKENSON ST: 503

**CUT-IN CONNECTION TO EX. 4-IN W.M.:**

- ISOLATING VALVES:  
-VOI2, VOI9, V021, V027
- NOTIFICATIONS:  
-JENIFER ST: 1501-1538  
-CANTWELL CT: 410-434  
-WILLIAMSON ST: 1521, 1523, 1511

PLOT SCALE:

PLOT NAME:

REV. DATE:

ORIGINATOR: CITY OF MADISON, STREETS DIVISION

**CONSTRUCTION NOTES:**

- CONSTRUCT NEW WATER MAIN 6.0' BELOW FINISHED GRADE, UNLESS OTHERWISE NOTED. INSULATE MAIN WITH POLYSTYRENE BOARD AT UTILITY CROSSINGS OR OTHER AREAS IDENTIFIED BY ENGINEER AS HAVING INADEQUATE COVER.
  - VERIFY SIZE OF EXISTING WATER SERVICES AND RECONNECT SERVICES AS INDICATED.
  - MINIMIZE DISTRUPTION OF SERVICE TO EXISTING CUSTOMERS. NOTIFY PER CONTRACT REQUIREMENTS OF ANY PLANNED WATER OUTAGE.
  - EXISTING WATER MAIN SHALL REMAIN IN SERVICE UNTIL NEW WATER MAIN IS TESTED AND ACCEPTED BY MADISON WATER UTILITY AND ALL SERVICES ARE RECONNECTED.
  - THE EXISTING UTILITIES SHOWN ON THIS PLAN REPRESENT THE BEST INFORMATION AVAILABLE TO THE WATER UTILITY AT THE TIME OF PLAN PREPARATION. LOCATE EACH UTILITY PRIOR TO COMMENCING WORK.
- WN1 REPLACE THE EXISTING LEAD SERVICE WITH A COPPER SERVICE.
  - WN2 EXTEND AND RECONNECT THE EXISTING COPPER SERVICE TO THE NEW WATER MAIN.
  - WN3 EXISTING SERVICE TO BE ABANDONED WHEN THE WATER MAIN IS CUT OFF.
  - WN4 DISCONNECT FROM THE OLD WATER MAIN AND RECONNECT THE EXISTING COPPER WATER SERVICE LATERAL TO THE NEW WATER MAIN.
  - WN5 RELOCATE THE EXISTING FIRE HYDRANT.
  - WN6 ABANDON WATER VALVE ACCESS STRUCTURE.
  - WN7 FURNISH AND INSTALL THE NEW TOP SECTION FOR THE WATER ACCESS STRUCTURE.
  - WN8 ABANDON THE VALVE BOX.
  - WN9 FURNISH THE DITCH, COMPACTION, AND ALL MATERIALS AND LABOR FOR THE INSTALLATION OF NEW SERVICE LATERAL.
  - WN10 REMOVE/SALVAGE HYDRANT.
  - WN11 REPLACE THE EXISTING COPPER SERVICE WITH A NEW COPPER SERVICE.



TO OBTAIN LOCATION OF PARTICIPANTS' UNDERGROUND FACILITIES BEFORE YOU DIG IN WISCONSIN  
**CALL DIGGERS HOTLINE 811**  
 or 1-800-242-8511  
**TOLL FREE**  
 FAX-A-LOCATE 1-800-338-3860  
 TDD (FOR HEARING IMPAIRED) 1-800-542-2289  
 WIS. STATUTE 182.0175 (1974)  
 REQUIRES MIN. OF 3 WORK DAYS NOTICE BEFORE YOU EXCAVATE.

**DAYTON ST - ESTIMATE OF MATERIALS SUPPLIED BY CONTRACTOR\*:**

- |                        |                                  |
|------------------------|----------------------------------|
| 18-FT - 4-IN PIPE      | 2 - 4-IN CAP                     |
| 54-FT - 6-IN PIPE      | 2 - 6-IN CAP                     |
| 684-FT - 8-IN PIPE     | 1 - 6-IN MJ PLUG                 |
|                        | 3 - 8-IN MJ PLUG                 |
| 820-FT - POLYWRAP      | 2 - 5-IN HYDRANT                 |
| 738-FT - SELECT FILL   |                                  |
| 2 - 6-IN VALVE AND BOX | 1-IN COPPER TUBING (AS REQUIRED) |
| 2 - 8-IN VALVE AND BOX | 8-FT - 2-IN STYROFOAM INSULATION |
| 2 - 8-IN X 4-IN TEE    |                                  |
| 3 - 8-IN X 6-IN TEE    |                                  |
| 1 - 8-IN X 8-IN CROSS  |                                  |

**DAYTON ST - MATERIALS SUPPLIED BY CITY\*:**

- 2 - 4-IN X 4-IN TAPPING SLEEVE
- 1 - 6-IN X 6-IN TAPPING SLEEVE
- 2 - 4-IN TAPPING VALVE AND BOX
- 1 - 6-IN TAPPING VALVE AND BOX

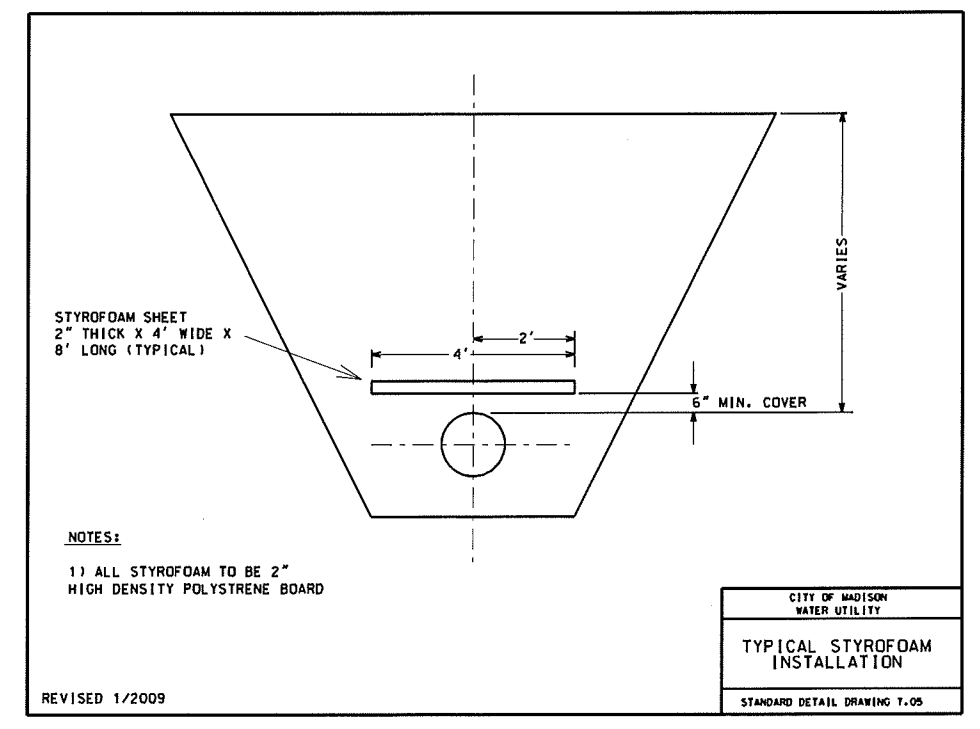
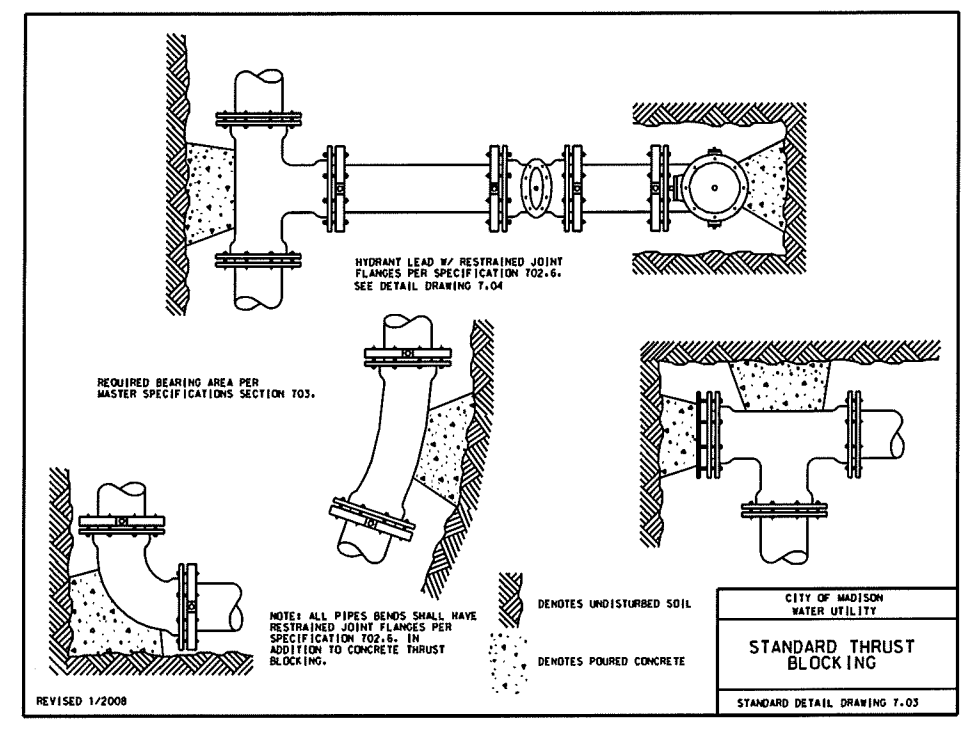
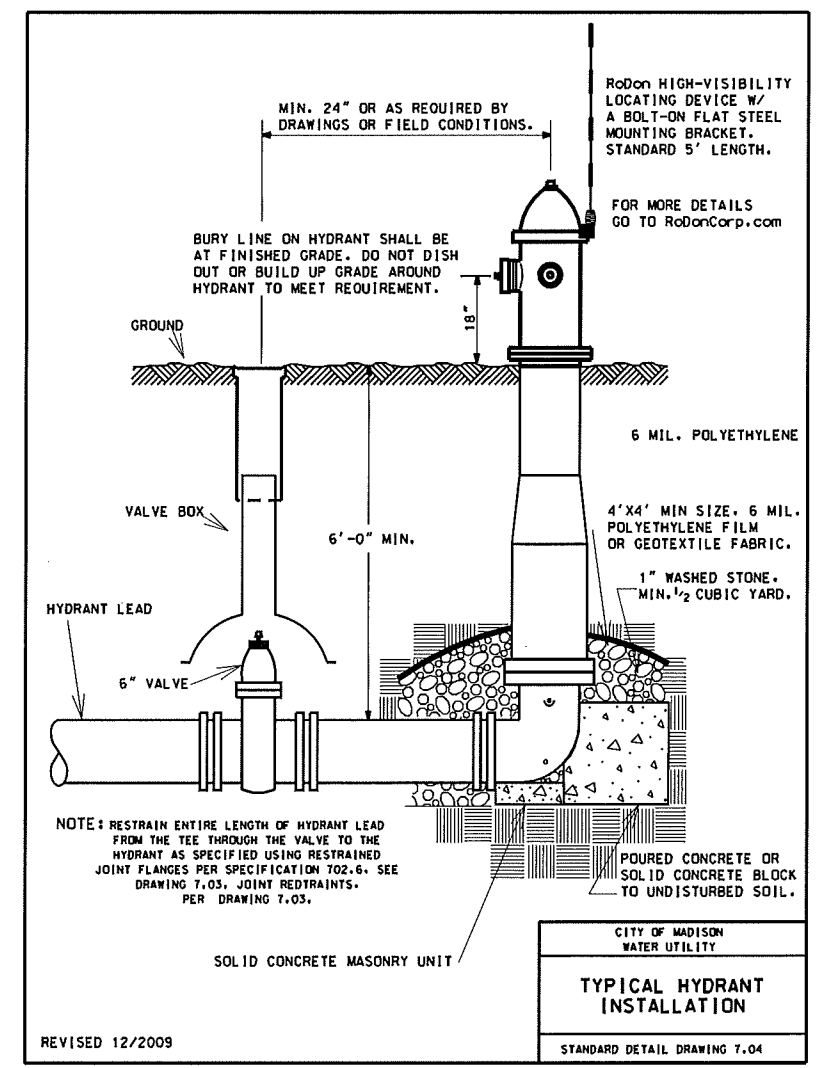
**JENIFER ST - ESTIMATE OF MATERIALS SUPPLIED BY CONTRACTOR\*:**

- |                        |                                   |
|------------------------|-----------------------------------|
| 90-FT - 4-IN PIPE      | 4 - 4-IN 90° BEND                 |
| 18-FT - 6-IN PIPE      | 1 - 4-IN CAP                      |
| 432-FT - 8-IN PIPE     | 5 - 8-IN MJ PLUG                  |
| 580-FT - POLYWRAP      | 1 - 4-IN X 12-IN OFFSET           |
| 522-FT - SELECT FILL   | 1 - 8-IN X 12-IN OFFSET           |
| 5 - 4-IN VALVE AND BOX | 1 - 5-IN HYDRANT                  |
| 1 - 6-IN VALVE AND BOX |                                   |
| 7 - 8-IN X 4-IN TEE    | 1-IN COPPER TUBING (AS REQUIRED)  |
| 1 - 8-IN X 6-IN TEE    | 16-FT - 2-IN STYROFOAM INSULATION |
| 1 - 8-IN X 8-IN TEE    |                                   |
| 1 - 8-IN X 8-IN CROSS  |                                   |

**JENIFER ST - MATERIALS SUPPLIED BY CITY\*:**

- 1 - 4-IN X 4-IN TAPPING SLEEVE
- 1 - 4-IN TAPPING VALVE AND BOX

\* ESTIMATE OF MATERIALS IS FOR INFORMATION ONLY. ENGINEER DOES NOT GUARANTEE ACCURACY OF MATERIAL TAKE-OFF.



PLOT SCALE:

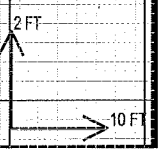
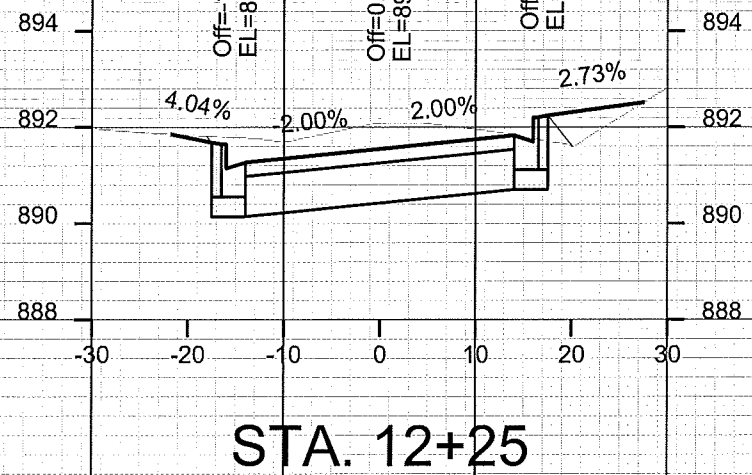
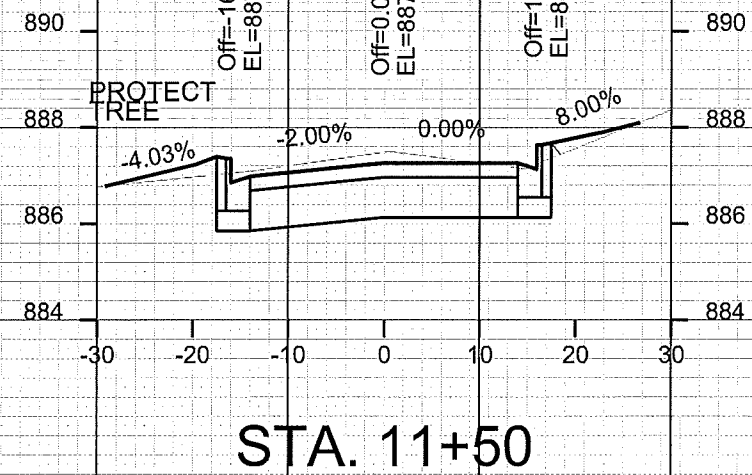
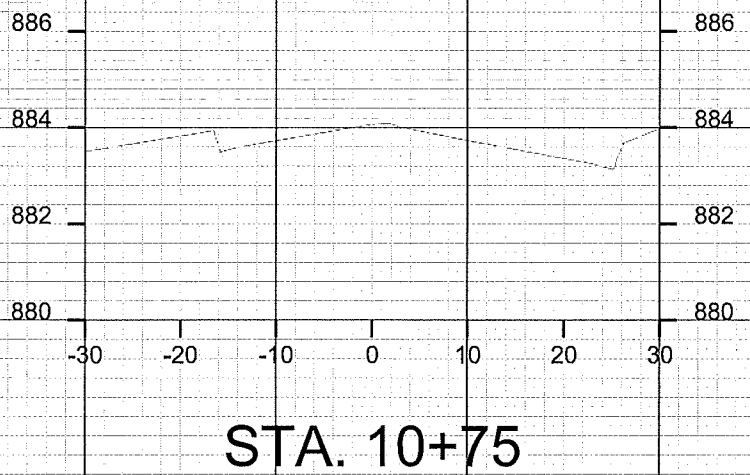
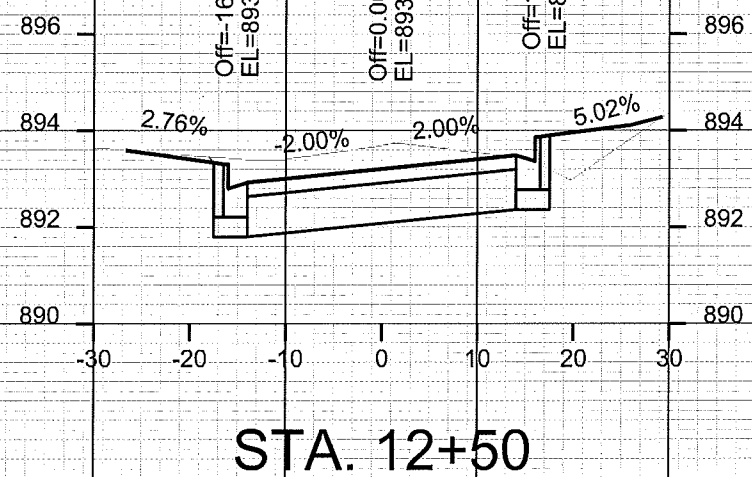
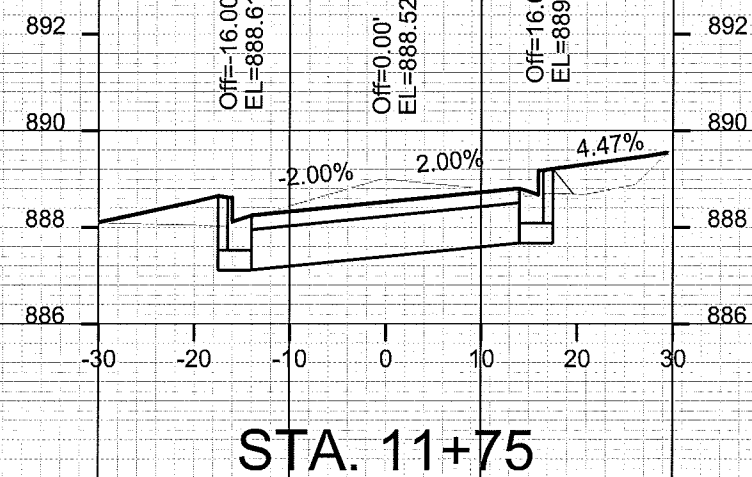
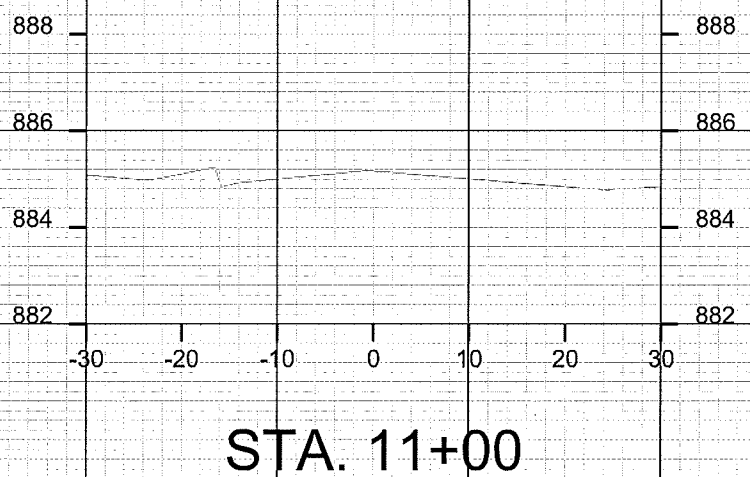
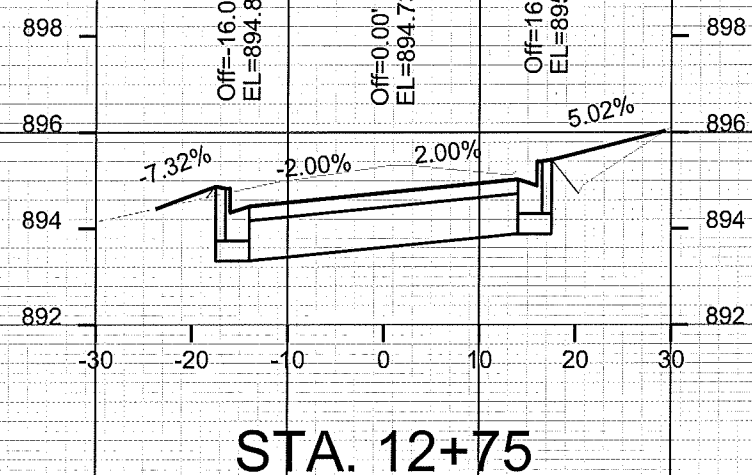
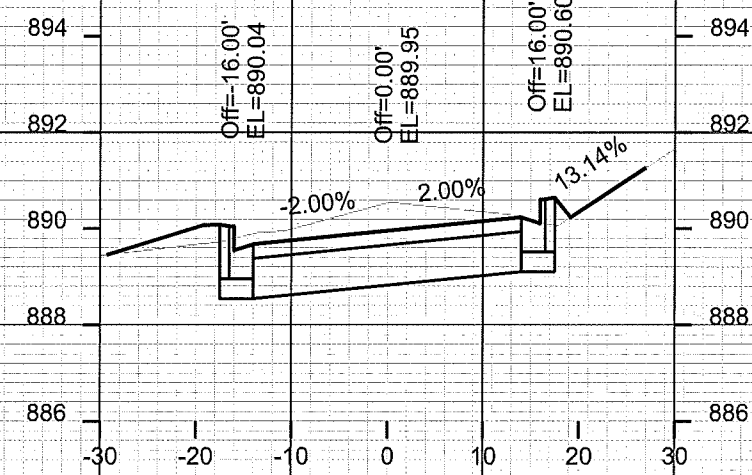
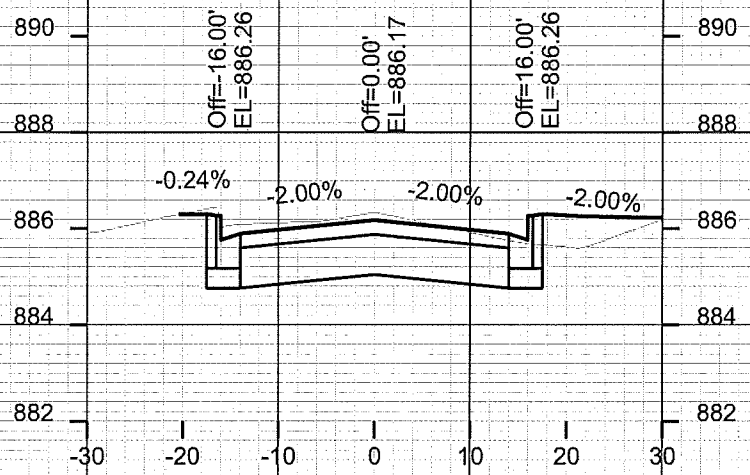
PLOT NAME:

REV. DATE:

ORIGINATOR:

CROSS SECTIONS

HANOVER STREET - 900 CITY OF MADISON



PLOT SCALE:

PLOT NAME:

REV. DATE:

ORIGINATOR: CITY OF MADISON, STREETS DIVISION

CROSS SECTIONS

HANOVER STREET

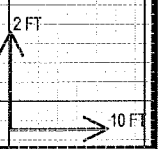
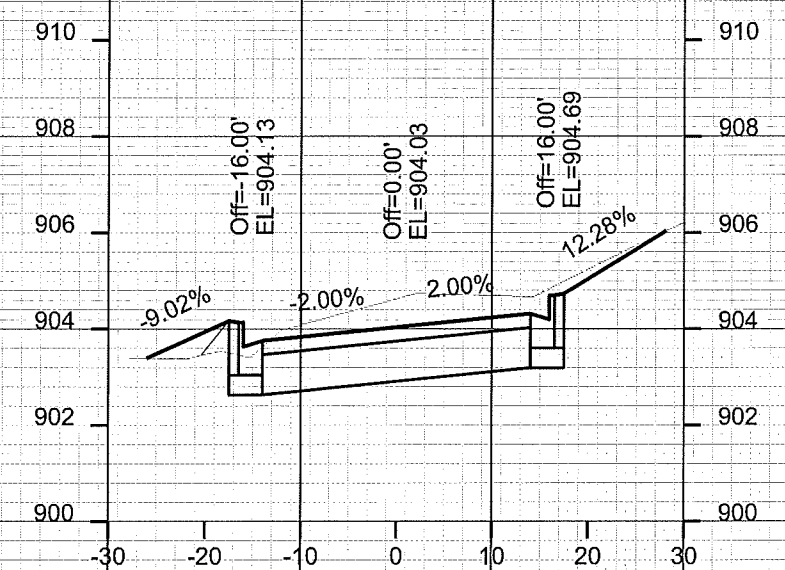
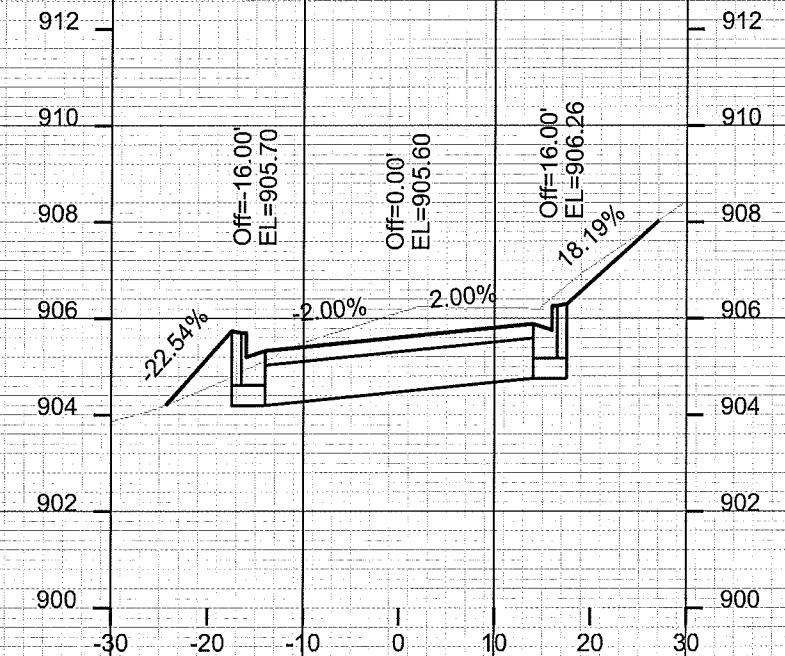
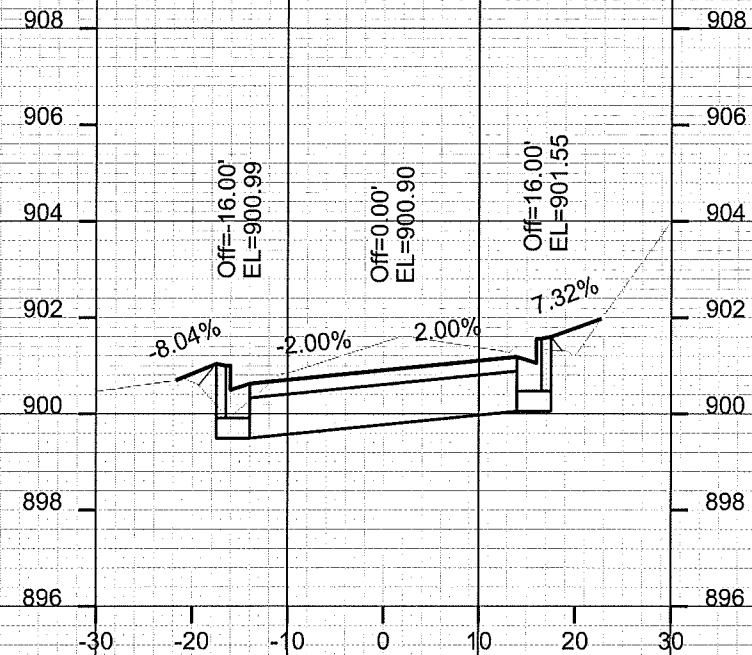
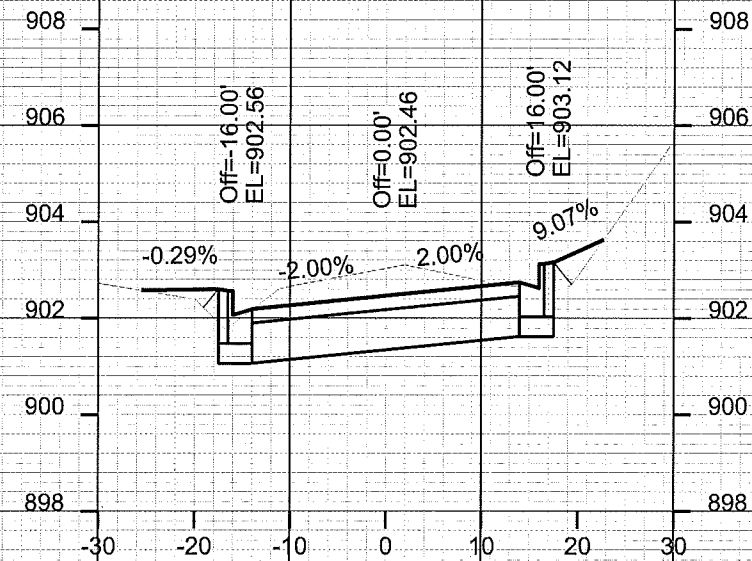
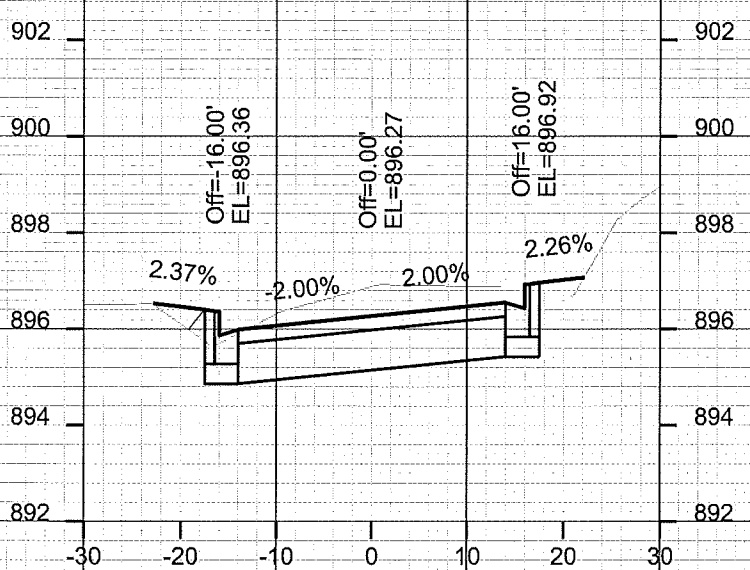
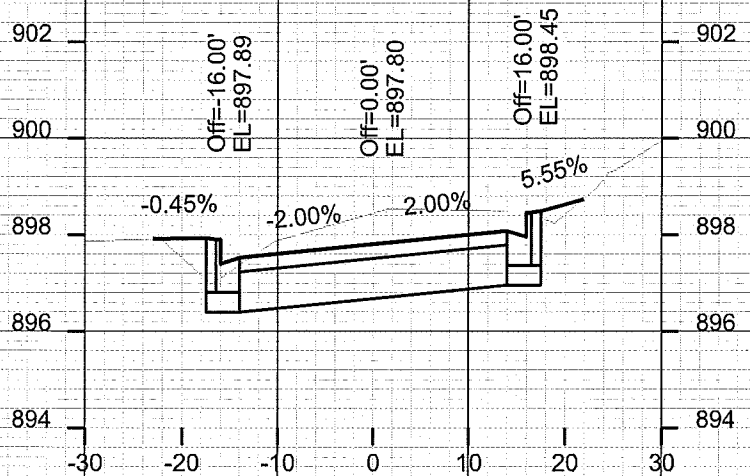
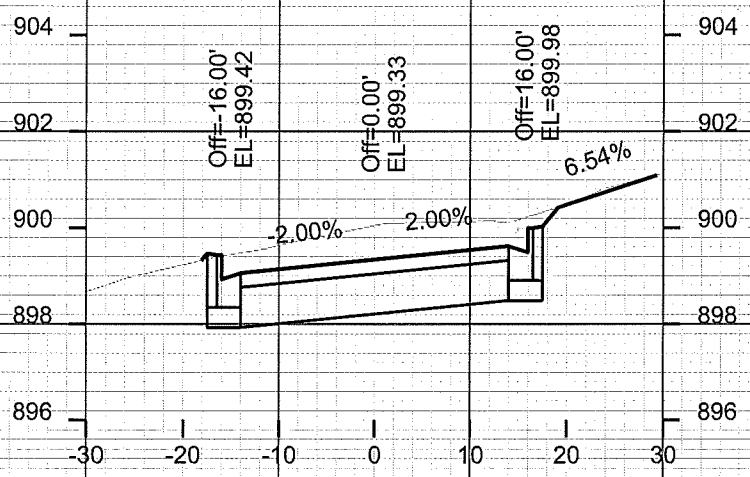
CITY OF MADISON

PLOT SCALE:

PLOT NAME:

REV. DATE:

ORIGINATOR: CITY OF MADISON, STREETS DIVISION



CROSS SECTIONS

HANOVER STREET

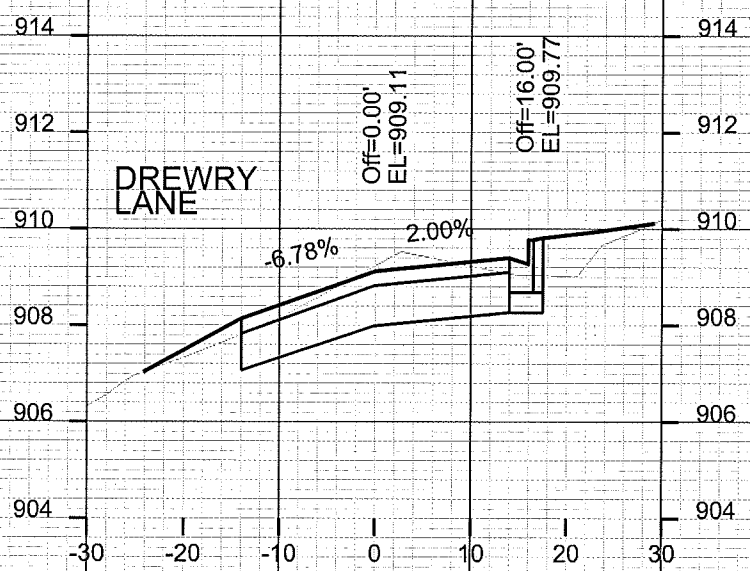
CITY OF MADISON

PLOT SCALE: \_\_\_\_\_

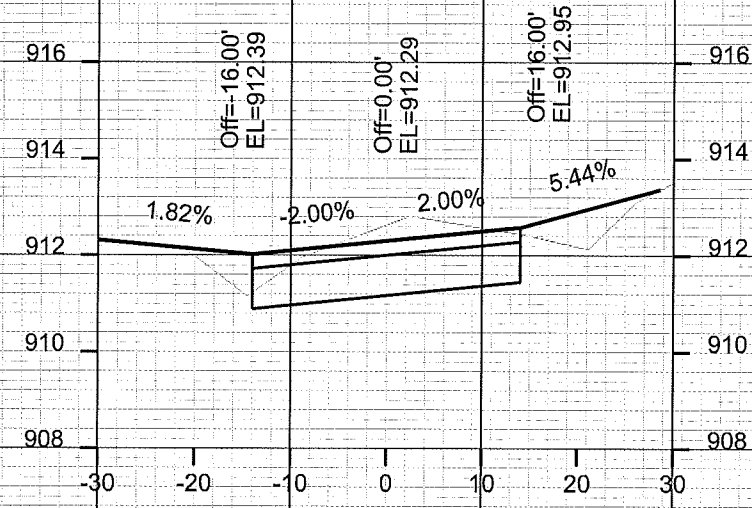
PLOT NAME: \_\_\_\_\_

REV. DATE: \_\_\_\_\_

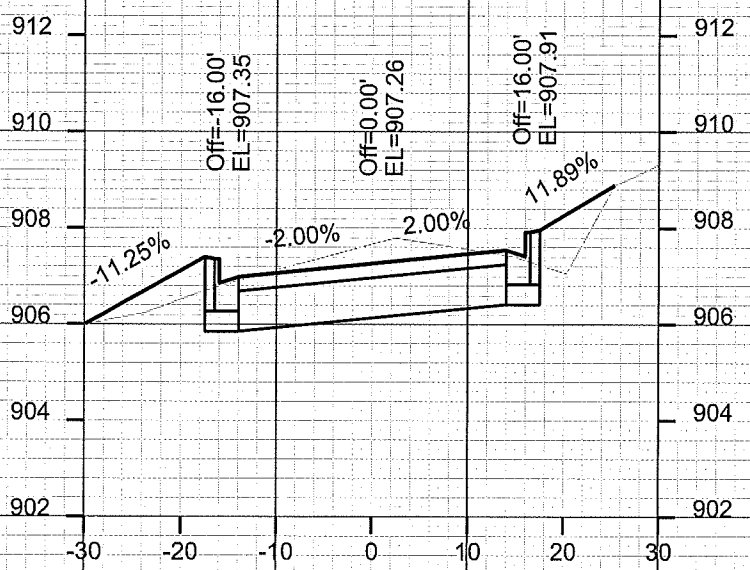
ORIGINATOR: CITY OF MADISON, STREETS DIVISION



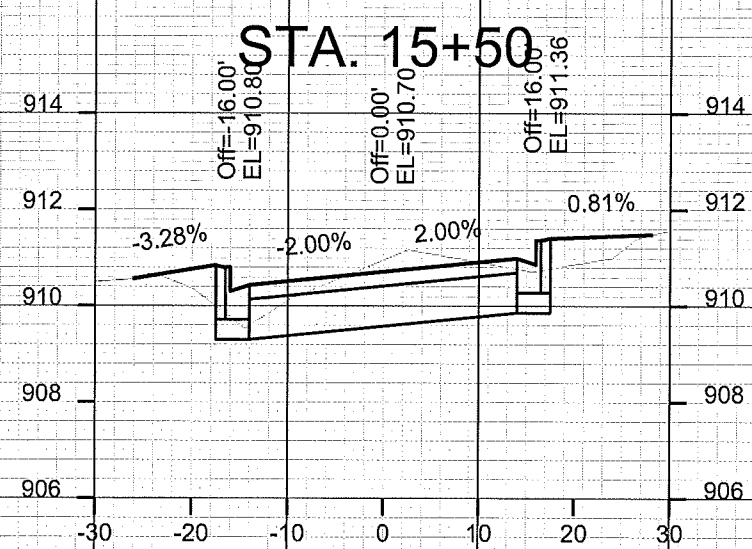
STA. 15+00



STA. 15+50



STA. 14+75



STA. 15+25

