



CITY OF MADISON

CITY PARKS DIVISION
DEPARTMENT OF PUBLIC WORKS
PLAN OF PROPOSED IMPROVEMENT

City of Madison
Department of Public Works
PARK DIVISION
City-County Building, Suite 104
210 Martin Luther King, Jr. Blvd.
PO Box 2987
Madison, WI 53701-2987



INDEX OF SHEETS

- SHEET C-1: CONSTRUCTION STAGING LOCATION
- SHEET E-1: EXISTING CONDITIONS PLAN
- SHEET S-1: SITE PLAN
- SHEET G-1: GRADING PLAN
- SHEET L-1: LANDSCAPE PLAN
- SHEET D-1: SECTION A
- SHEET D-2: SECTION B
- SHEET D-3: SECTION C
- SHEET D-4: SECTION D
- SHEET D-5: VEGETATED RIPRAP DETAIL, TYP.
- SHEET D-6: BOAT LANDING DETAIL
- SHEET D-7: RAILING DETAIL
- SHEET X-1: DESIGN CALCULATIONS

PROJECT:

*HUDSON PARK
IMPROVEMENTS*

*HUDSON PARK
2713 Lakeland Ave.
Madison, WI 53704*

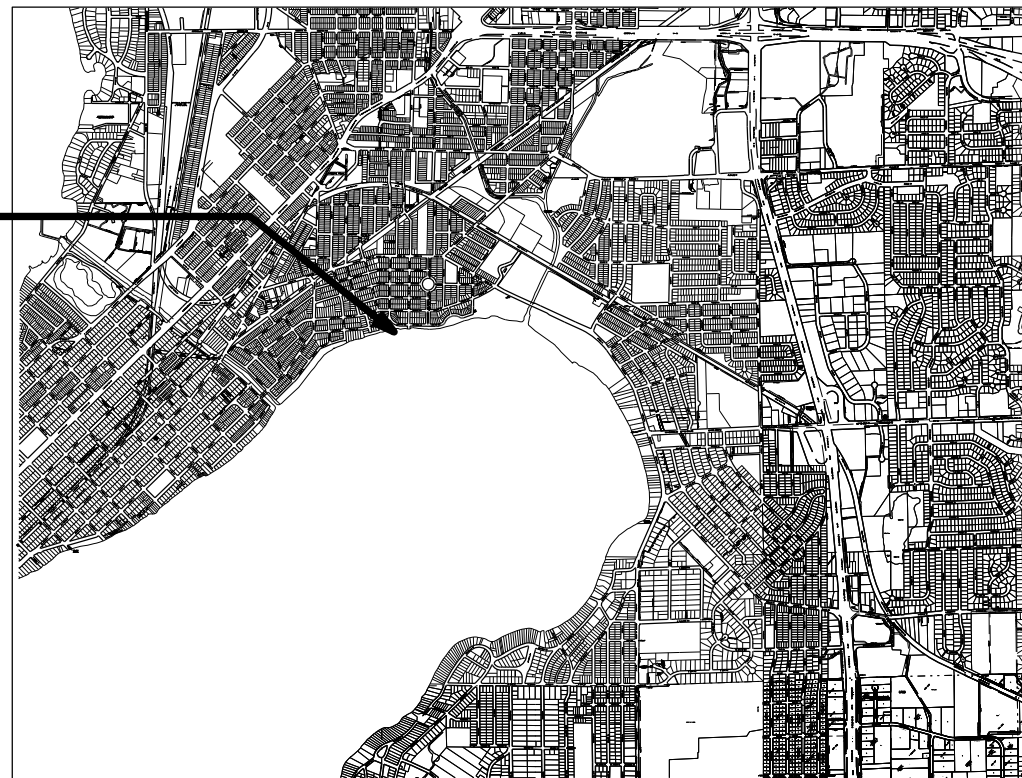
HUDSON PARK IMPROVEMENTS

City Project No. 53W1400
Contract No. 6859

Although every effort has been made in preparing these plans and checking them for accuracy, the contractor and subcontractors must check all details and dimensions of their trade and be responsible for the same.

ITEM	DATE
Drawn by: SCL	08-15-2011
Revised by: SCL	10-10-2011
Revised by: SCL	12-28-2011
Revised by: SCL	01-17-2012
Revised by: SCL	01-23-2012
Revised by: SCL	05-30-2012
Revised by: SCL	06-15-2012

PROJECT SITE

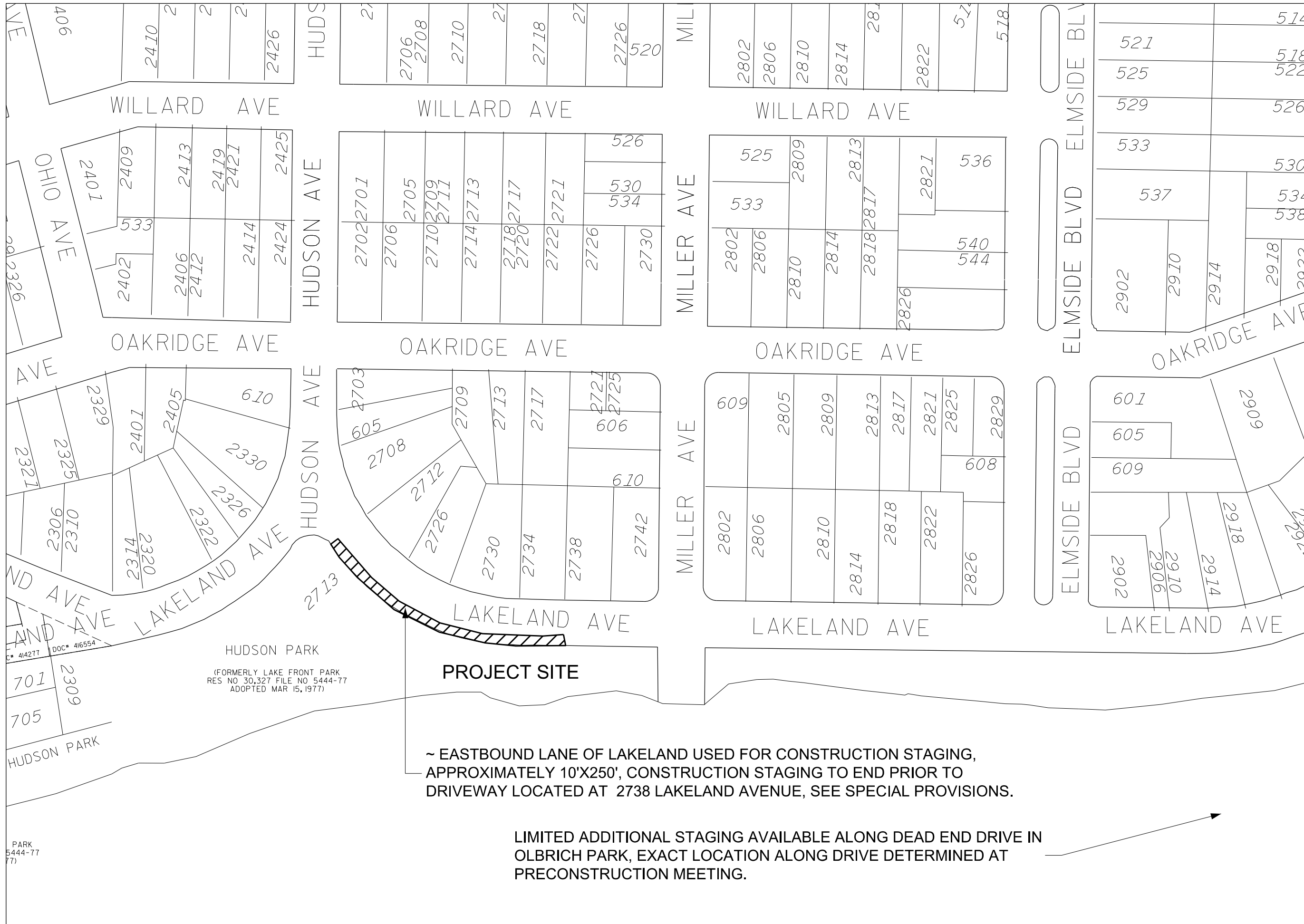


PUBLIC WORKS PROJECT #:
6859

SHEET TITLE:

TITLE SHEET

SHEET NUMBER:



City of Madison
 Department of Public Works
PARK DIVISION
 City-County Building, Suite 104
 210 Martin Luther King, Jr. Blvd.
 PO Box 2987
 Madison, WI 53701-2987

play
MADISON PARKS

PROJECT:
HUDSON PARK IMPROVEMENTS

HUDSON PARK
 2713 Lakeland Ave.
 Madison, WI 53704

Although every effort has been made in preparing these plans and checking them for accuracy, the contractor and subcontractors must check all details and dimensions of their trade and be responsible for the same.

ITEM	DATE
Drawn by: SCL	08-15-2011
Revised by: SCL	10-10-2011
Revised by: SCL	12-28-2011
Revised by: SCL	01-17-2012
Revised by: SCL	01-23-2012
Revised by: SCL	05-30-2012
Revised by: SCL	06-15-2012

PUBLIC WORKS PROJECT #:
6859

SHEET TITLE:
CONSTRUCTION STAGING LOCATION

SHEET NUMBER:
C-1



PROJECT:
**HUDSON PARK
 IMPROVEMENTS**

**HUDSON PARK
 2713 Lakeland Ave.
 Madison, WI 53704**

Although every effort has been made in preparing these plans and checking them for accuracy, the contractor and subcontractors must check all details and dimensions of their trade and be responsible for the same.

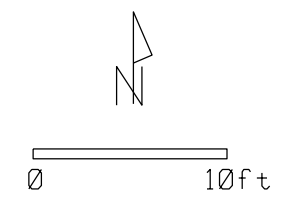
ITEM	DATE
Drawn by: DCR	02-03-2012

PUBLIC WORKS PROJECT #:
6859

SHEET TITLE:
**EXISTING
 CONDITIONS PLAN**

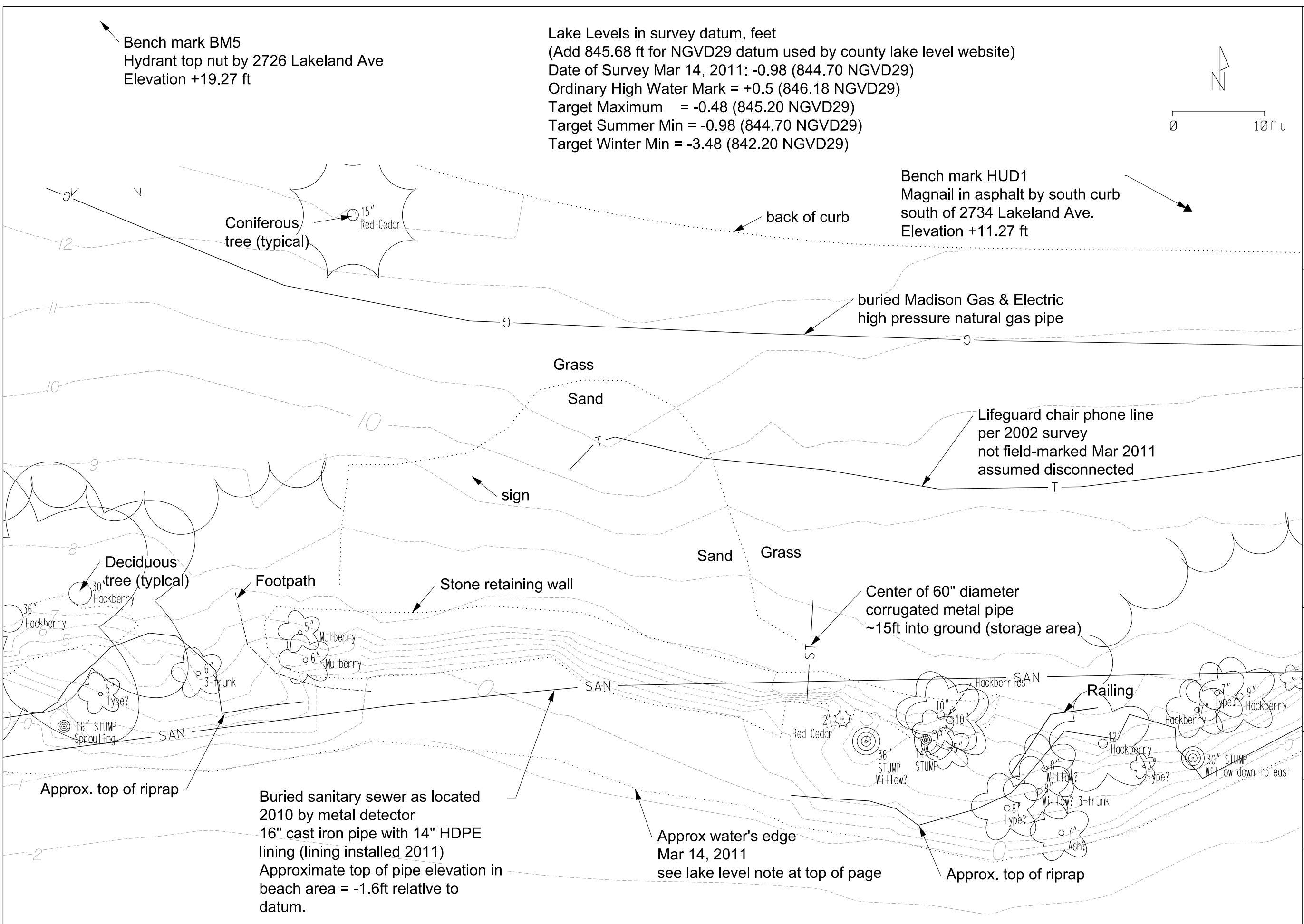
SHEET NUMBER:
E-1

Lake Levels in survey datum, feet
 (Add 845.68 ft for NGVD29 datum used by county lake level website)
 Date of Survey Mar 14, 2011: -0.98 (844.70 NGVD29)
 Ordinary High Water Mark = +0.5 (846.18 NGVD29)
 Target Maximum = -0.48 (845.20 NGVD29)
 Target Summer Min = -0.98 (844.70 NGVD29)
 Target Winter Min = -3.48 (842.20 NGVD29)



Bench mark BM5
 Hydrant top nut by 2726 Lakeland Ave
 Elevation +19.27 ft

Bench mark HUD1
 Magnail in asphalt by south curb
 south of 2734 Lakeland Ave.
 Elevation +11.27 ft



Buried sanitary sewer as located
 2010 by metal detector
 16" cast iron pipe with 14" HDPE
 lining (lining installed 2011)
 Approximate top of pipe elevation in
 beach area = -1.6ft relative to
 datum.

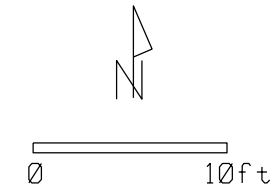
Approx water's edge
 Mar 14, 2011
 see lake level note at top of page

LEGEND (PROPOSED)

- #— CONTOUR
- - - GRADING EXTENTS
- x- TEMPORARY CONSTRUCTION FENCING
- [STONE MULCH PATTERN] STONE MULCH
- [SAND PATTERN] SAND
- [CONCRETE PATTERN] CONCRETE
- [RIPRAP PATTERN] RIPRAP
- - - SILT SOCK
- - - TURBIDITY BARRIER
- X:X SLOPE
- ← GRADES
- +X.XX' GRADES
- ✕ REMOVE TREES
- [STONE WALL] STONE RETAINING WALLS
- [RAILING] RAILING

NOTES:

1. REFER TO EXISTING CONDITIONS PLAN FOR EXISTING CONDITIONS.
2. IF SEEDED, EROSION CONTROL MATTING SHALL BY APPLIED TO ALL SLOPES GREATER THAN 3:1.
3. PLACE INLET PROTECTION AT INLETS DOWNSLOPE IN LAKELAND AVENUE INCLUDING TWO ON NORTHWEST CORNER OF LAKELAND AND MILLER, AND 3 ON SOUTHSIDE OF LAKELAND AT LAKELAND AND MILLER INTERSECTION.
4. PLACE SILT SOCK AROUND TEMPORARY SOIL STOCKPILE AS SPECIFIED IN PLANS AND SPECIAL PROVISIONS.



City of Madison
 Department of Public Works
PARK DIVISION
 City-County Building, Suite 104
 210 Martin Luther King, Jr. Blvd.
 PO Box 2987
 Madison, WI 53701-2987



PROJECT:
HUDSON PARK IMPROVEMENTS

HUDSON PARK
 2713 Lakeland Ave.
 Madison, WI 53704

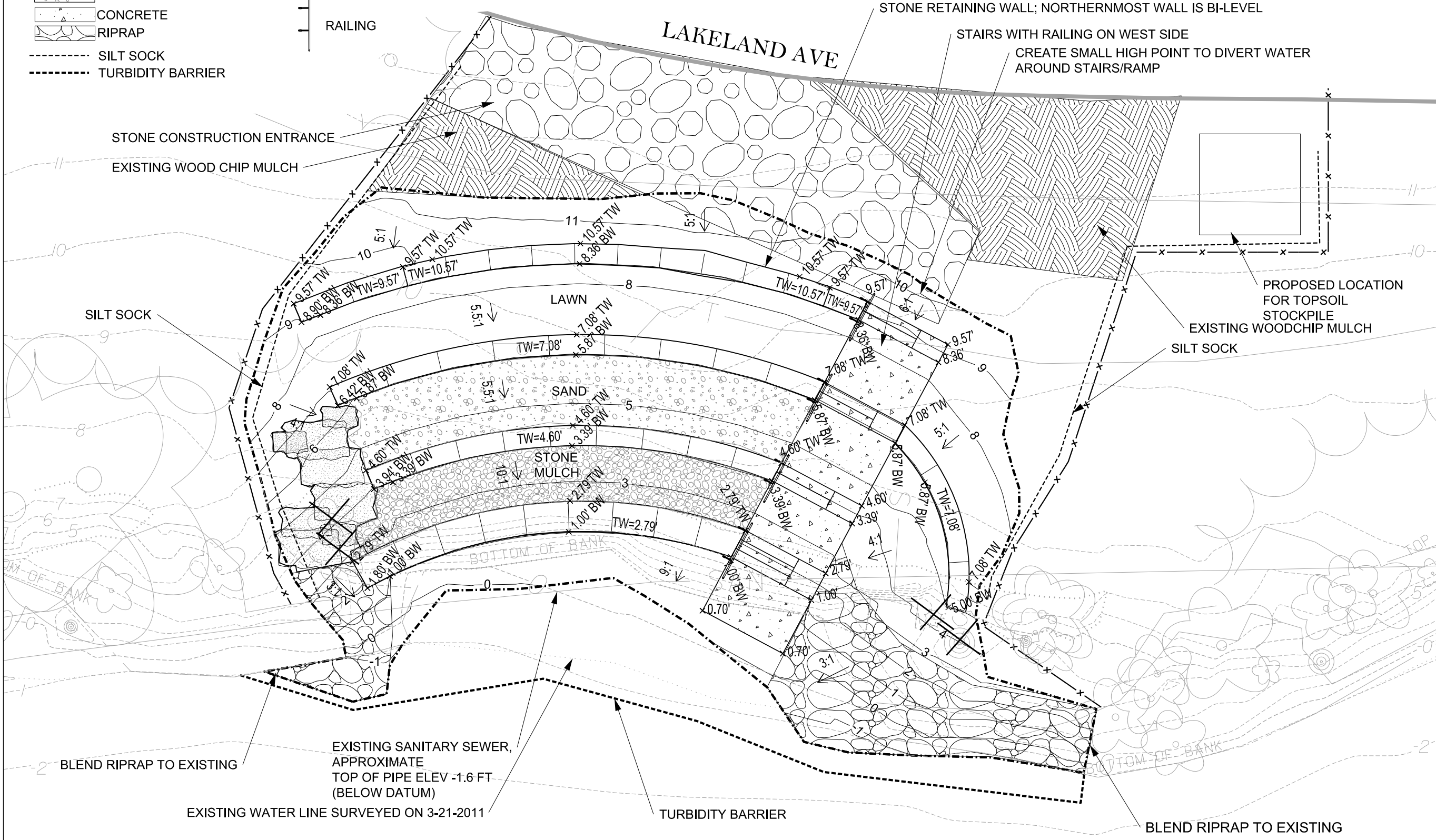
Although every effort has been made in preparing these plans and checking them for accuracy, the contractor and subcontractors must check all details and dimensions of their trade and be responsible for the same.

ITEM	DATE
Drawn by: SCL	08-15-2011
Revised by: SCL	10-10-2011
Revised by: SCL	12-28-2011
Revised by: SCL	01-17-2012
Revised by: SCL	01-23-2012
Revised by: SCL	02-08-2012
Revised by: SCL	05-30-2012
Revised by: SCL	06-15-2012

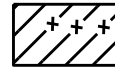
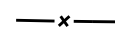
PUBLIC WORKS PROJECT #:
6859

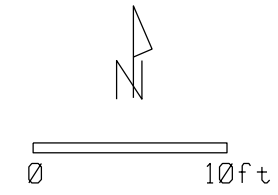
SHEET TITLE:
GRADING AND EROSION CONTROL PLAN

SHEET NUMBER:
G-1



LEGEND (PROPOSED)

-  SUN & SHADE TOLERANT FESCUE
-  ADDITIONAL TEMPORARY CONSTRUCTION FENCING



City of Madison
 Department of Public Works
PARK DIVISION
 City-County Building, Suite 104
 210 Martin Luther King, Jr. Blvd.
 PO Box 2987
 Madison, WI 53701-2987



PROJECT:
**HUDSON PARK
 IMPROVEMENTS**

**HUDSON PARK
 2713 Lakeland Ave.
 Madison, WI 53704**

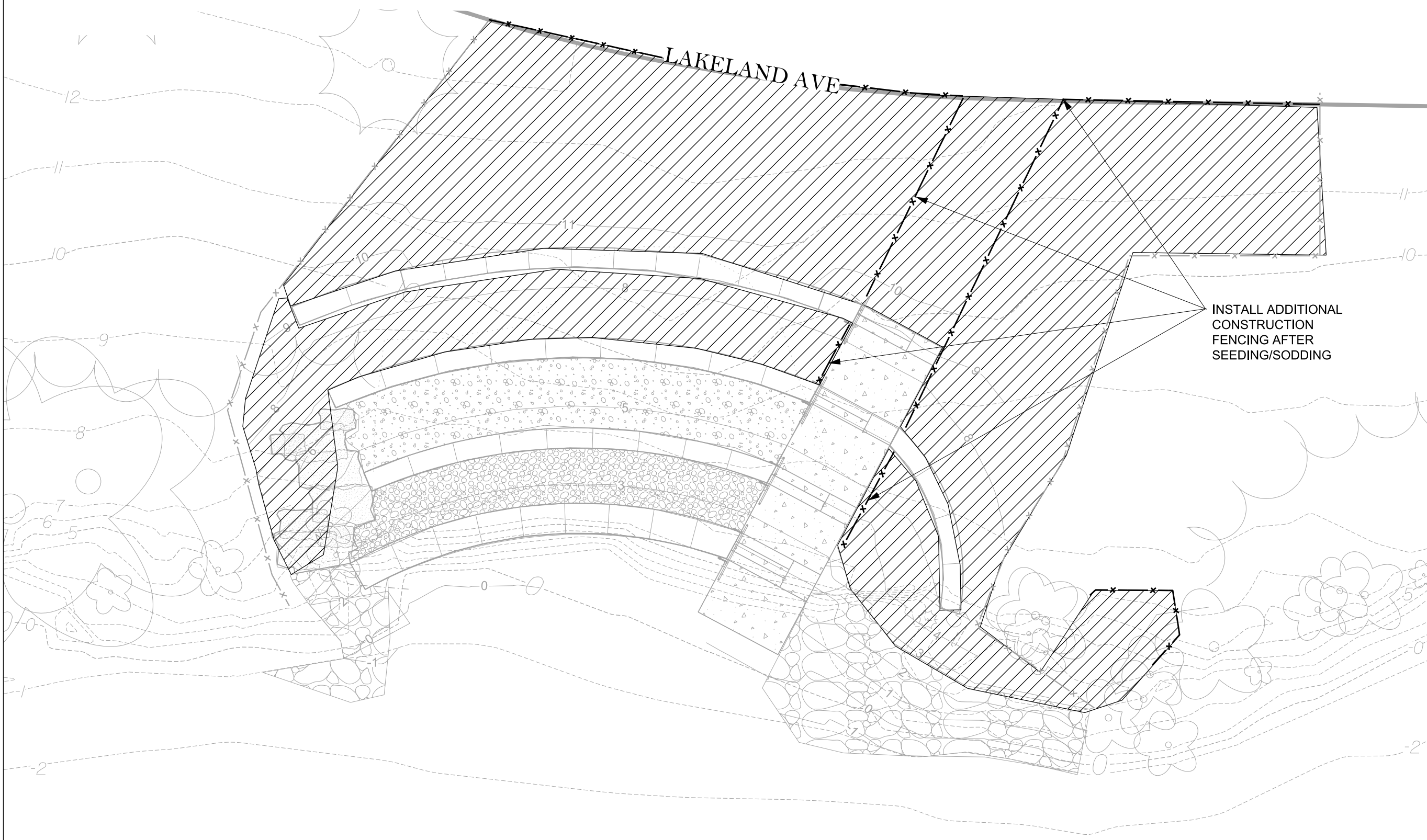
Although every effort has been made in preparing these plans and checking them for accuracy, the contractor and subcontractors must check all details and dimensions of their trade and be responsible for the same.

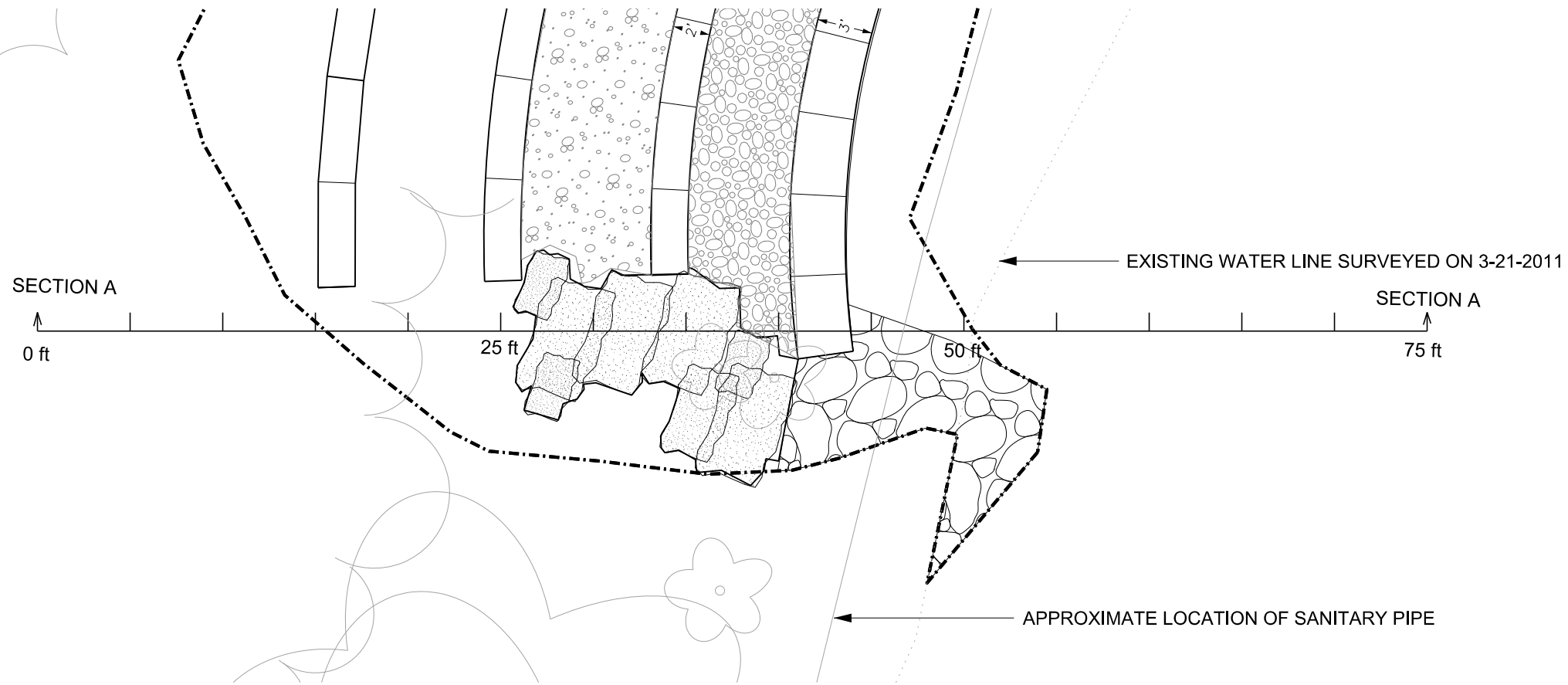
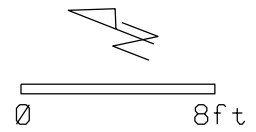
ITEM	DATE
Drawn by: SCL	08-15-2011
Revised by: SCL	10-10-2011
Revised by: SCL	12-28-2011
Revised by: SCL	01-17-2012
Revised by: SCL	01-23-2012
Revised by: SCL	05-30-2012
Revised by: SCL	06-15-2012

PUBLIC WORKS PROJECT #:
6859

SHEET TITLE:
**SEEDING/SODDING
 PLAN**

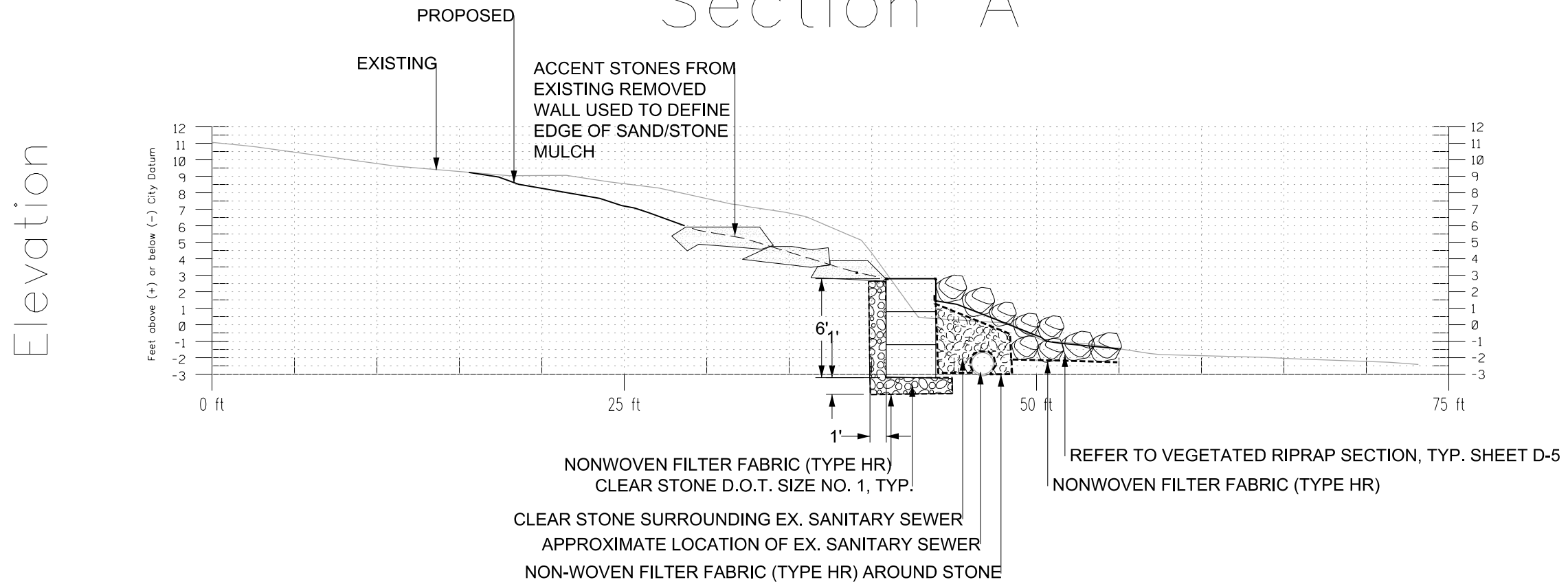
SHEET NUMBER:
L-1





NOTE: REFER TO EXISTING CONDITION PLAN FOR EXISTING CONDITIONS.

Section A



PROJECT:
HUDSON PARK IMPROVEMENTS

HUDSON PARK
 2713 Lakeland Ave.
 Madison, WI 53704

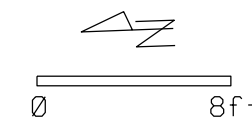
Although every effort has been made in preparing these plans and checking them for accuracy, the contractor and subcontractors must check all details and dimensions of their trade and be responsible for the same.

ITEM	DATE
Drawn by: SCL	08-15-2011
Revised by: SCL	10-10-2011
Revised by: SCL	12-28-2011
Revised by: SCL	01-17-2012
Revised by: SCL	01-23-2012
Revised by: SCL	02-08-2012
Revised by: SCL	05-30-2012
Revised by: SCL	06-15-2012

PUBLIC WORKS PROJECT #:
6859

SHEET TITLE:
SECTION A

SHEET NUMBER:
D-1



PROJECT:
**HUDSON PARK
 IMPROVEMENTS**

HUDSON PARK
 2713 Lakeland Ave.
 Madison, WI 53704

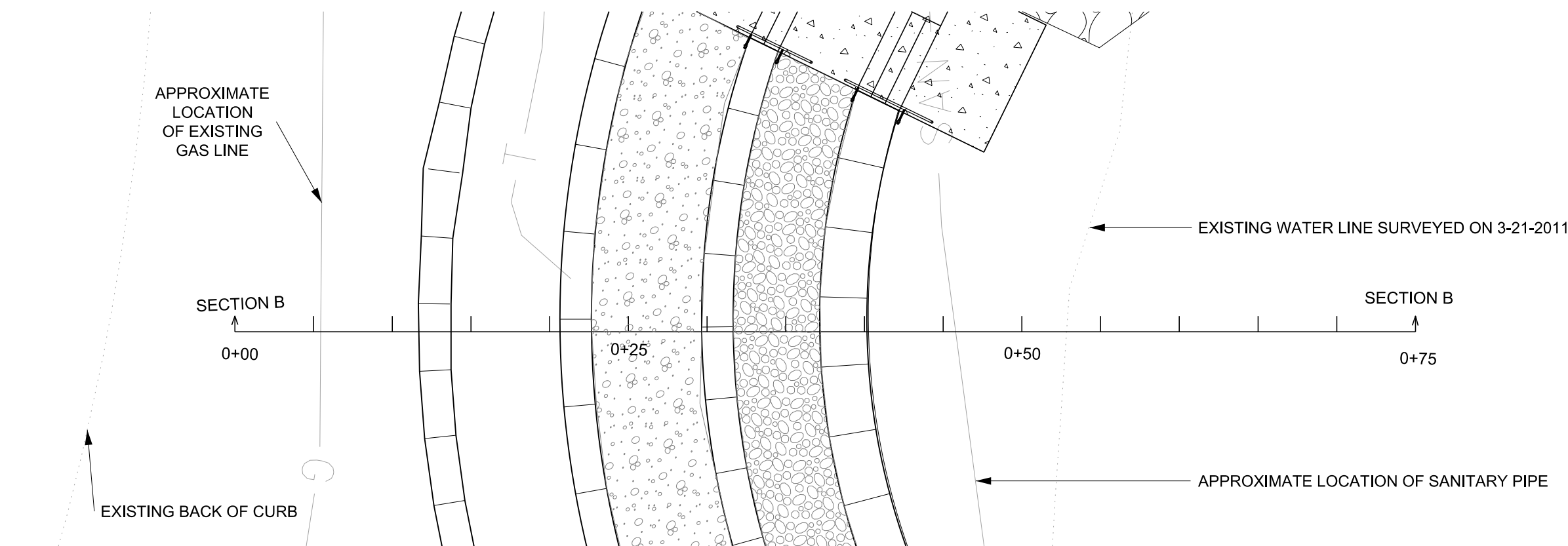
Although every effort has been made in preparing these plans and checking them for accuracy, the contractor and subcontractors must check all details and dimensions of their trade and be responsible for the same.

ITEM	DATE
Drawn by: SCL	08-15-2011
Revised by: SCL	10-10-2011
Revised by: SCL	12-28-2011
Revised by: SCL	01-17-2012
Revised by: SCL	01-23-2012
Revised by: SCL	02-08-2012
Revised by: SCL	05-30-2012
Revised by: SCL	06-15-2012

PUBLIC WORKS PROJECT #:
6859

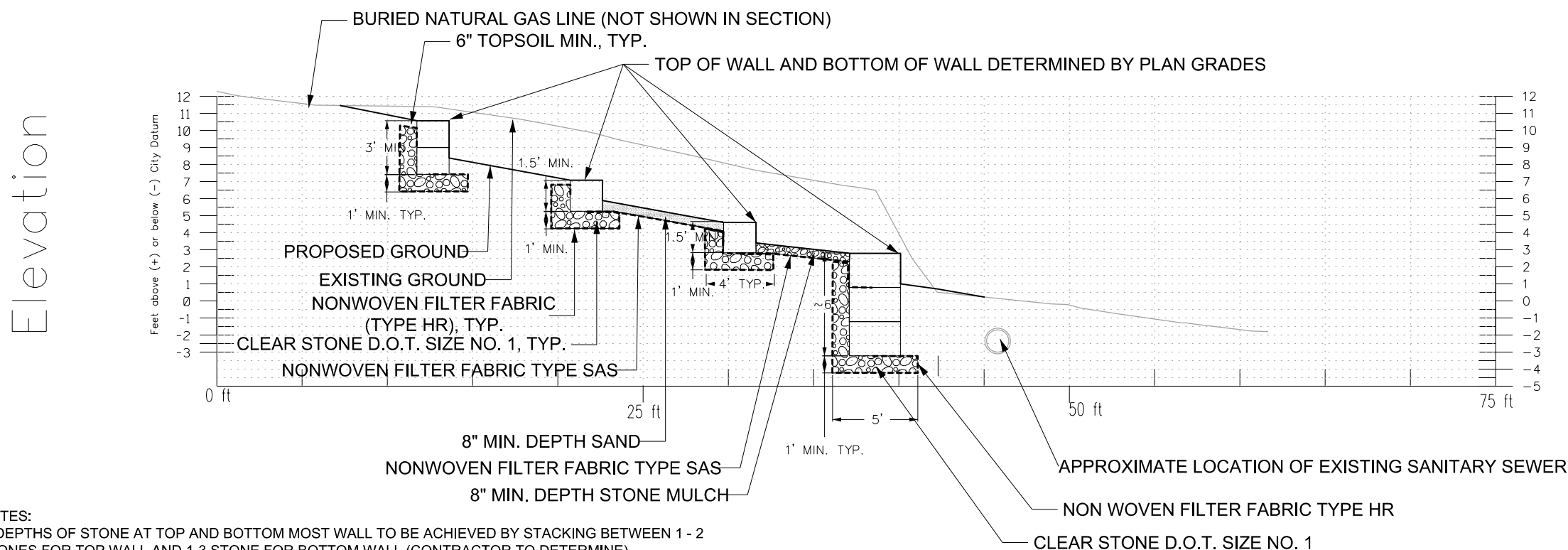
SHEET TITLE:
SECTION B

SHEET NUMBER:
D-2



NOTE: REFER TO EXISTING CONDITION PLAN FOR EXISTING CONDITIONS.

Section B



- NOTES:
1. DEPTHS OF STONE AT TOP AND BOTTOM MOST WALL TO BE ACHIEVED BY STACKING BETWEEN 1 - 2 STONES FOR TOP WALL AND 1-3 STONE FOR BOTTOM WALL (CONTRACTOR TO DETERMINE).
 2. STONE BEHIND RETAINING WALL SHALL BE WRAPPED IN TYPE HR FILTER FABRIC, WITH A MIN. 1' OVERLAP AND SHALL BE TUCKED BEHIND AND UNDER WALL A MINIMUM OF 1' AS SHOWN ON DRAWINGS.



PROJECT:
**HUDSON PARK
 IMPROVEMENTS**

HUDSON PARK
 2713 Lakeland Ave.
 Madison, WI 53704

Although every effort has been made in preparing these plans and checking them for accuracy, the contractor and subcontractors must check all details and dimensions of their trade and be responsible for the same.

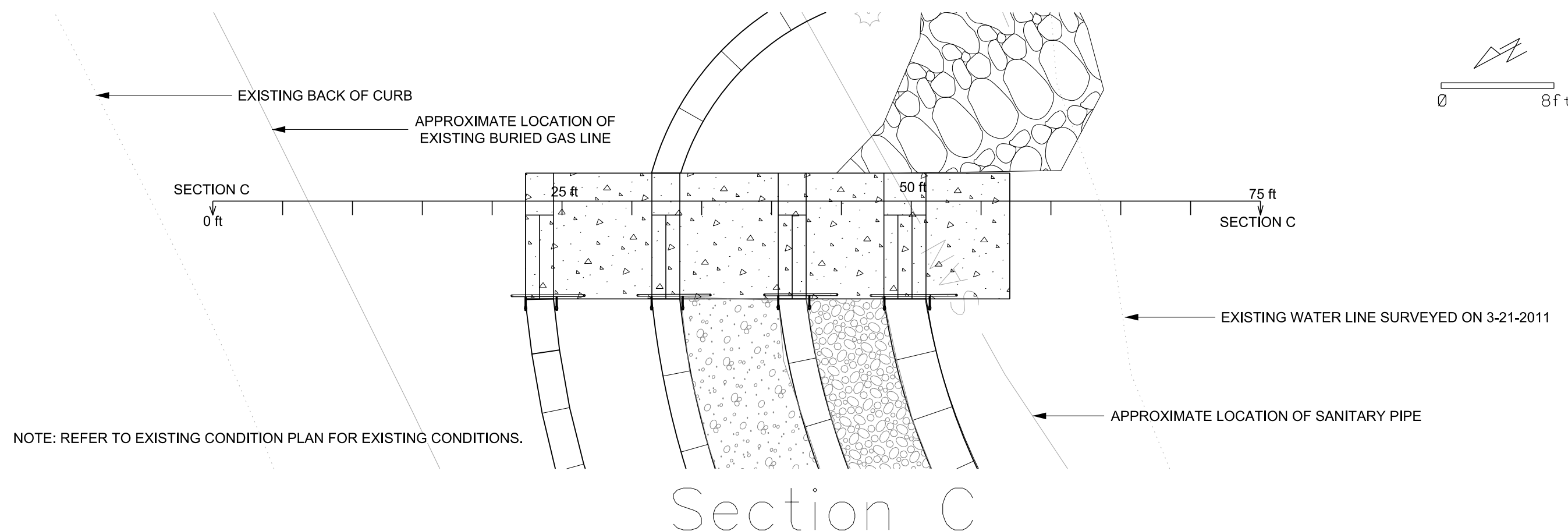
ITEM	DATE
Drawn by: SCL	08-15-2011
Revised by: SCL	10-10-2011
Revised by: SCL	12-28-2011
Revised by: SCL	01-17-2012
Revised by: SCL	01-23-2012
Revised by: SCL	02-08-2012
Revised by: SCL	05-30-2012
Revised by: SCL	06-15-2012

PUBLIC WORKS PROJECT #:
6859

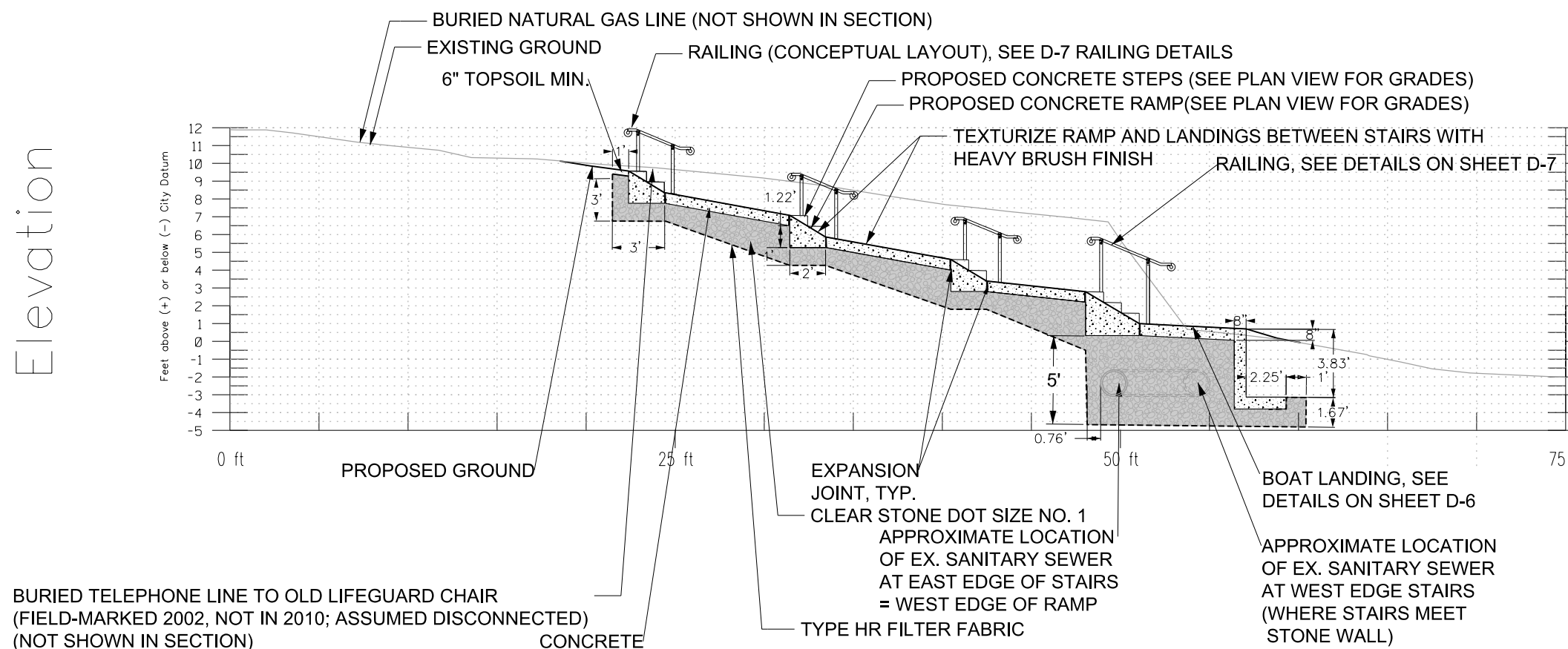
SHEET TITLE:
SECTION C

SHEET NUMBER:

D-3



Section C



NOTE:
 1.) ALL CONCRETE SHALL BE FIBER REINFORCED CONCRETE. BOAT "RAMP" AND STAIRS TO BE POURED INTEGRAL WITH FIBER REINFORCED CONCRETE. BOAT "RAMP" REFERS TO THE RAMP PARALLEL TO THE STAIRS, NOT THE SLABS BELOW OR ABOVE THE STAIRS OR THE BOAT LANDING AS DETAILED ON SHEET D-6.

SHOULD THE CONTRACTOR CHOOSE, THEY MAY SUBMIT A POURING DETAIL TO CONSTRUCT THE RAMP AND STAIRS WITH MULTIPLE POURS. THIS WILL REQUIRE REBAR REINFORCEMENT WHICH SHALL BE INCLUDED WITH BID ITEM FOR CONSTRUCTION OF CONCRETE ACCESS RAMP.

BURIED TELEPHONE LINE TO OLD LIFEGUARD CHAIR (FIELD-MARKED 2002, NOT IN 2010; ASSUMED DISCONNECTED) (NOT SHOWN IN SECTION)



PROJECT:
**HUDSON PARK
 IMPROVEMENTS**

HUDSON PARK
 2713 Lakeland Ave.
 Madison, WI 53704

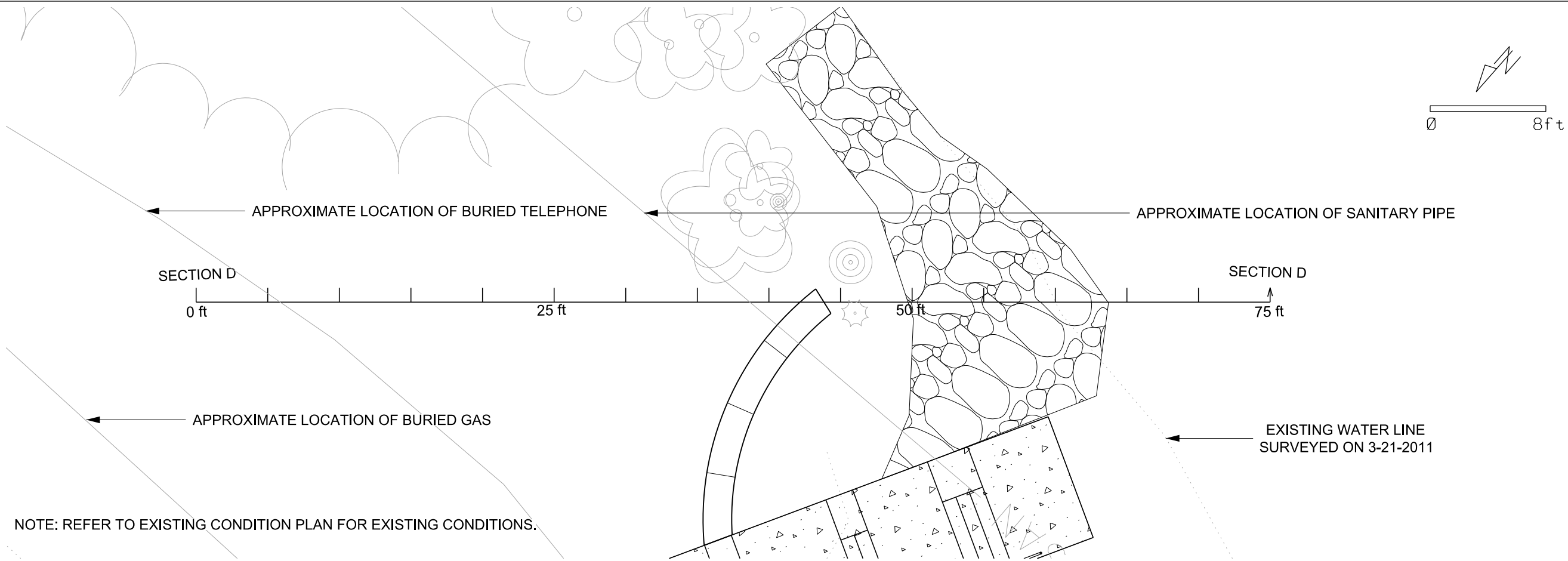
Although every effort has been made in preparing these plans and checking them for accuracy, the contractor and subcontractors must check all details and dimensions of their trade and be responsible for the same.

ITEM	DATE
Drawn by: SCL	08-15-2011
Revised by: SCL	10-10-2011
Revised by: SCL	12-28-2011
Revised by: SCL	01-17-2012
Revised by: SCL	01-23-2012
Revised by: SCL	02-08-2012
Revised by: SCL	05-30-2012
Revised by: SCL	06-15-2012

PUBLIC WORKS PROJECT #:
6859

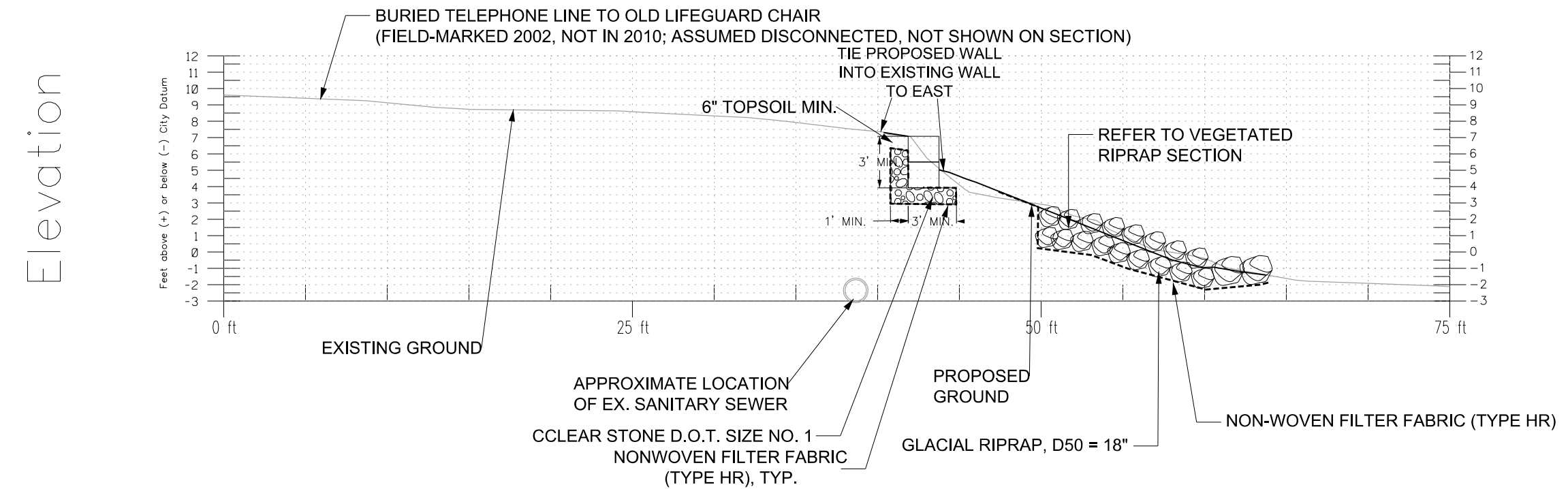
SHEET TITLE:
SECTION D

SHEET NUMBER:
D-4

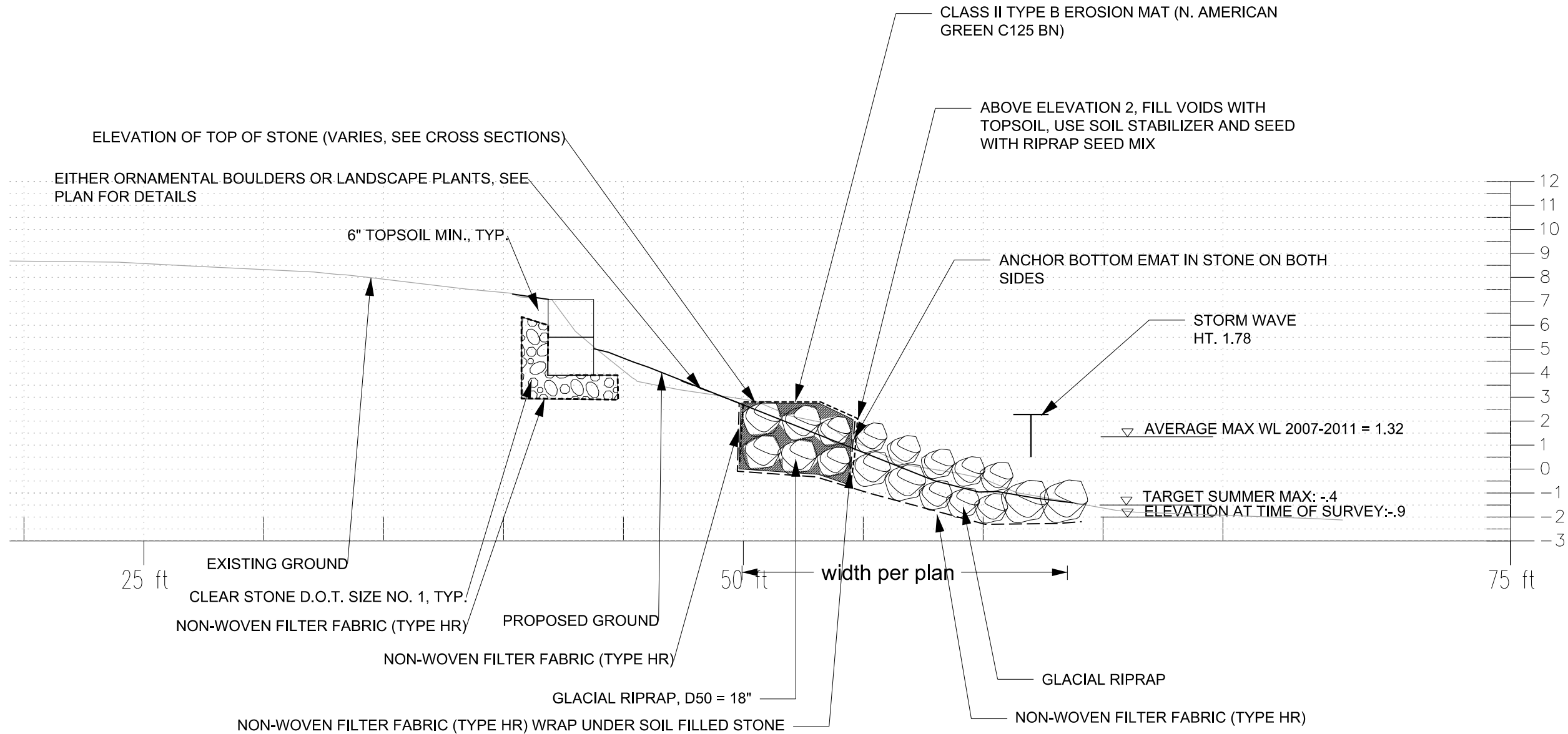


NOTE: REFER TO EXISTING CONDITION PLAN FOR EXISTING CONDITIONS.

Section D



VEGETATED RIPRAP SECTION, TYP.



GLACIAL RIPRAP ON 3:1 SLOPE SHALL BE 12" TO 24" DIAMETER, PLACED 36" DEEP AS MEASURED PERPENDICULAR TO THE SLOPE.

GLACIAL RIPRAP AT THE TOE SHALL BE 20-24" DIAMETER PLACED IN A SINGLE COURSE AT TOE.

City of Madison
 Department of Public Works
PARK DIVISION
 City-County Building, Suite 104
 210 Martin Luther King, Jr. Blvd.
 PO Box 2987
 Madison, WI 53701-2987



PROJECT:
HUDSON PARK IMPROVEMENTS

HUDSON PARK
 2713 Lakeland Ave.
 Madison, WI 53704

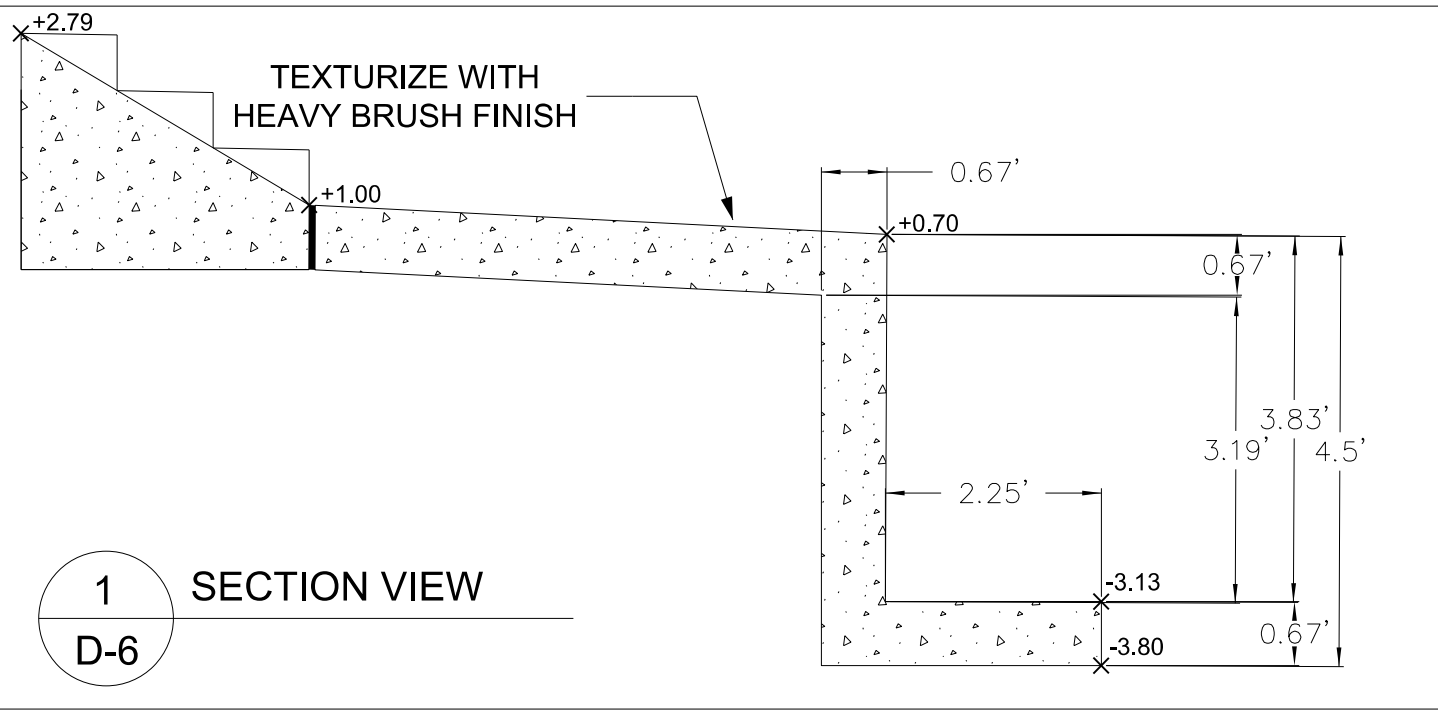
Although every effort has been made in preparing these plans and checking them for accuracy, the contractor and subcontractors must check all details and dimensions of their trade and be responsible for the same.

ITEM	DATE
Drawn by: SCL	08-15-2011
Revised by: SCL	10-10-2011
Revised by: SCL	12-28-2011
Revised by: SCL	01-17-2012
Revised by: SCL	01-23-2012
Revised by: SCL	05-30-2012
Revised by: SCL	06-15-2012

PUBLIC WORKS PROJECT #:
6859

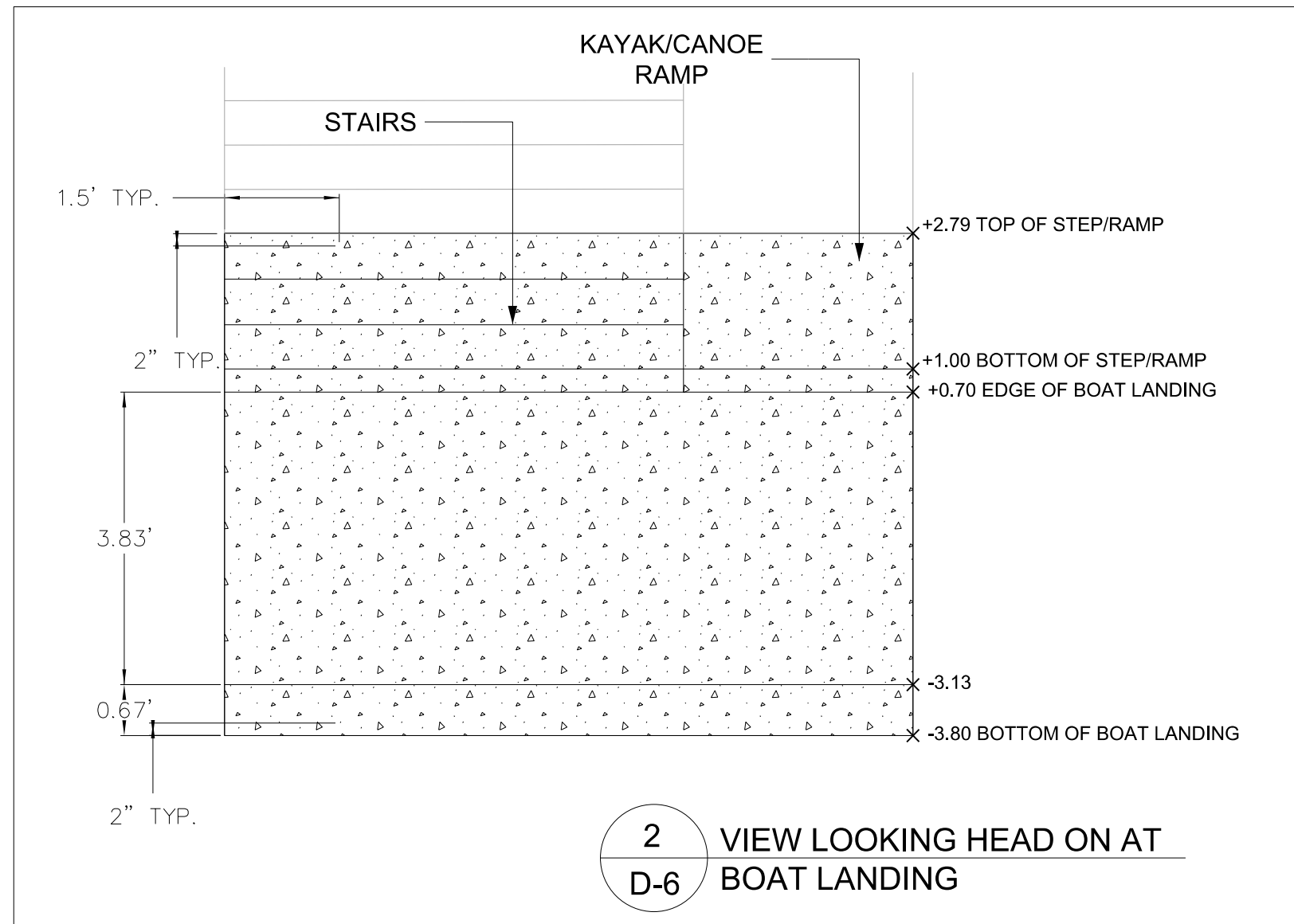
SHEET TITLE:
VEGETATED RIPRAP SECTION

SHEET NUMBER:
D-5



1 SECTION VIEW
D-6

NOTE: THE CONTRACTOR IS REQUIRED TO INCLUDE A CONSTRUCTION STAGING DETAIL FOR THE BOAT LANDING WHICH SHALL INCLUDE SPECIFICATIONS DETAILING PROPOSED REINFORCING, REFER TO SPECIAL PROVISIONS OF THIS CONTRACT.



2 VIEW LOOKING HEAD ON AT
D-6 BOAT LANDING

City of Madison
Department of Public Works
PARK DIVISION
City-County Building, Suite 104
210 Martin Luther King, Jr. Blvd.
PO Box 2987
Madison, WI 53701-2987



PROJECT:
**HUDSON PARK
IMPROVEMENTS**

HUDSON PARK
2713 Lakeland Ave.
Madison, WI 53704

Although every effort has been made in preparing these plans and checking them for accuracy, the contractor and subcontractors must check all details and dimensions of their trade and be responsible for the same.

ITEM	DATE
Drawn by: SCL	08-15-2011
Revised by: SCL	10-10-2011
Revised by: SCL	12-28-2011
Revised by: SCL	01-17-2012
Revised by: SCL	01-23-2012
Revised by: SCL	05-30-2012
Revised by: SCL	06-15-2012

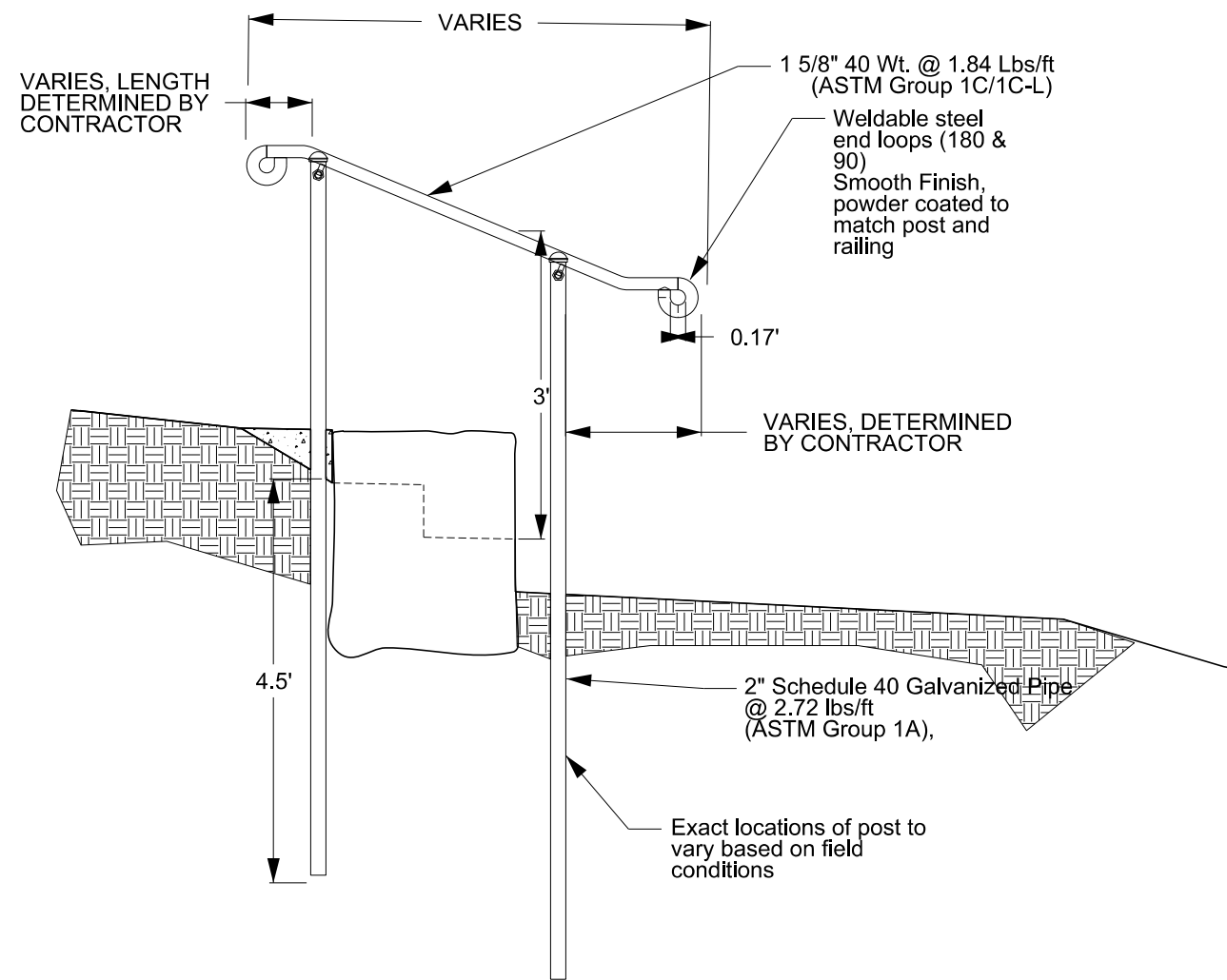
PUBLIC WORKS PROJECT #:
6859

SHEET TITLE:
**BOAT LANDING
DETAIL**

SHEET NUMBER:
D-6

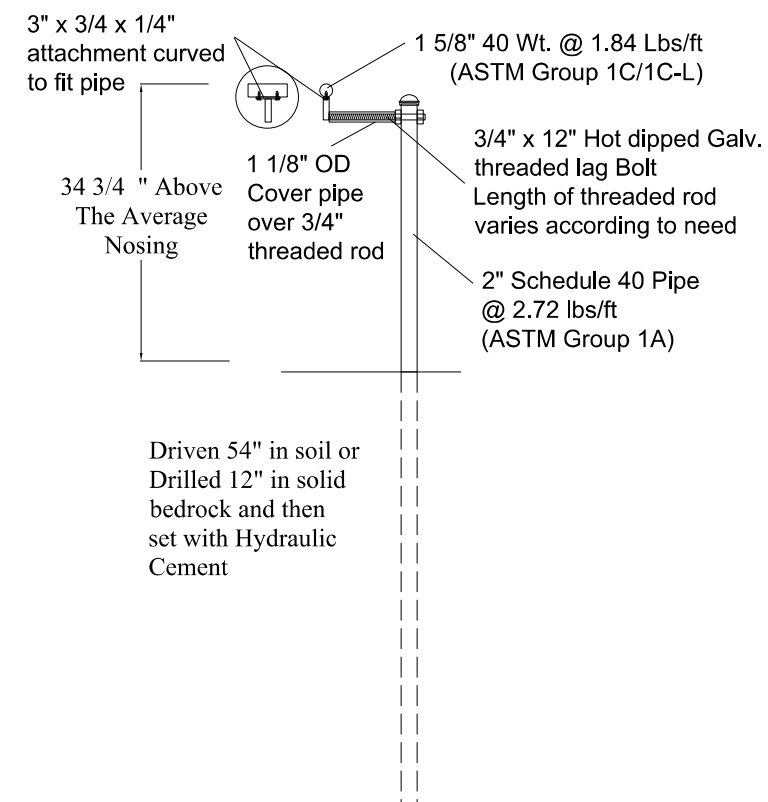
NOTE:

- 1.) ALL PIECES SILVER IN COLOR.
- 2.) RAILING SHALL BE DESIGNED TO MEET ALL APPLICABLE CODES.
- 3.) RAILING LENGTH MAY VARY TO ACCOMODATE POST LOCATIONS.



1 PROFILE
D-7 NOT TO SCALE

All Pieces silver in color



2 ELEVATION
D-7 NOT TO SCALE

City of Madison
Department of Public Works
PARK DIVISION
City-County Building, Suite 104
210 Martin Luther King, Jr. Blvd.
PO Box 2987
Madison, WI 53701-2987



PROJECT:
HUDSON PARK IMPROVEMENTS

HUDSON PARK
2713 Lakeland Ave.
Madison, WI 53704

Although every effort has been made in preparing these plans and checking them for accuracy, the contractor and subcontractors must check all details of their trade and be responsible for the same.

ITEM	DATE
Drawn by: SCL	08-15-2011
Revised by: SCL	10-10-2011
Revised by: SCL	12-28-2011
Revised by: SCL	01-17-2012
Revised by: SCL	01-23-2012
Revised by: SCL	05-30-2012
Revised by: SCL	06-15-2012

PUBLIC WORKS PROJECT #:
6859

SHEET TITLE:

RAILING DETAIL

SHEET NUMBER:

D-7

HUDSON PARK 2012 IMPROVEMENTS - Earthwork Quantities

City of Madison, WI Public Works Contract #6859
Date Revised: 6/15/2012

Notes:

Positive volumes are cuts, negative volumes are fills.

Not all parts of all surface models (Digital Terrain Models) are used for computations or intended for actual construction.

Grp	ID#	Material	Item	From Surface Model	To Surface Model	area (sq ft)	depth (ft)	Unfactored volume (cu ft)	Unfactored volume (cu yd)	Expansion Factor (%)	Factored (Uncompacted) Volume (cu yd)
SB		Clear Stone Place	Place clear stone for construction entrance (714 square feet x 1' depth)			714	-1.00	-714	-26.4	0%	-26.4
SB		Clear Stone Place	Place clear stone to protect sanitary sewer (13 sq ft on cross section x 6 ft width)			78	varies	-78	-26.4	0%	-26.4
SB		Gravel Place	Place gravel base for stairs & ramp (89 sq ft on cross section x 11 ft width)			440	varies	-979	-36.3	0%	-36.3
WA		Gravel Place	Place gravel base, wall 1			236	-1.00	-236	-8.7	0%	-8.7
WA		Gravel Place	Place gravel behind wall 1 (top wall)			150	-1.00	-150	-5.6	0%	-5.6
WA		Gravel Place	Place gravel base, wall 2			201	-1.00	-201	-7.4	0%	-7.4
WA		Gravel Place	Place gravel behind wall 2 (3rd row from bottom)			75	-1.00	-75	-2.8	0%	-2.8
WA		Gravel Place	Place gravel base, wall 4			200	-1.00	-200	-7.4	0%	-7.4
WA		Gravel Place	Place gravel behind wall 4 (bottom wall)			240	-1.00	-240	-8.9	0%	-8.9
WA		Gravel Place	Place gravel behind wall 3 (2nd wall from bottom)			63	-1.00	-63	-2.3	0%	-2.3
WA		Gravel Place	Place gravel base, wall 3			168	-1.00	-168	-6.2	0%	-6.2
WA		Gravel Place	Place gravel base, wall 5 (wall east of stairs)			80	-1.00	-80	-3.0	0%	-3.0
WA		Gravel Place	Place gravel behind wall 5			54	-1.00	-54	-2.0	0%	-2.0
SP		Pea Gravel Place	Place 6" of pea gravel			171	-0.67	-115	-4.2	0%	-4.2
RR		Riprap Excavate	Remove existing riprap (avg. dia of 18")			124	1.50	186	6.9	0%	6.9
RR		Riprap Place	Place 36" of riprap			124	-3.00	-372	-13.8	0%	-13.8
SR		Riprap Place	Place 36" of riprap			212	-3.00	-636	-23.6	0%	-23.6
SD		Sand Excavate	Excavate existing 8" sand			207	0.67	139	5.1	0%	5.1
SN		Sand Excavate	Excavate existing 8" sand			296	0.67	198	7.3	0%	7.3
SP		Sand Excavate	Excavate existing 8" sand			171	0.67	115	4.2	0%	4.2
ST		Sand Excavate	Excavate existing 8" sand			84	0.67	56	2.1	0%	2.1
SW		Sand Excavate	Excavate existing 8" sand			114	0.67	76	2.8	0%	2.8
SA		Sand Place	Place 8" sand			19	-0.67	-13	-0.5	0%	-0.5
SN		Sand Place	Place 8" sand			296	-0.67	-198	-7.3	0%	-7.3
RR		Subsoil Excavate	Excavate Subsoil to within 1.5' of pro grade	Existing	Pro-1.5'	124	varies	213	7.9	0%	7.9
SA		Subsoil Excavate	Excavate Subsoil to within 6" of pro grade	Existing - 4"	Pro- 6"	19	varies	50	1.9	0%	1.9
SD		Subsoil Excavate	Excavate Subsoil to within 6" of pro grade	Existing-8"	Pro-6"	207	varies	497	18.4	0%	18.4
SL		Subsoil Excavate	Excavate subsoil for smaller wall	Ex - 4 in	Pro-3.5'	46	varies	155	5.7	0%	5.7
SL		Subsoil Excavate	Excavate subsoil for top wall	Ex - 4 in	Pro - 4ft	88	varies	338	12.5	0%	12.5
SN		Subsoil Excavate	Excavate Subsoil to within 6" of pro grade	Existing -8"	Pro-6"	296	varies	971	36.0	0%	36.0
SO		Subsoil Excavate	Excavate Subsoil to within 6" of pro grade	Existing -4"	Pro - 6"	988	varies	1042	38.6	0%	38.6
SP		Subsoil Excavate	Excavate Subsoil to within 6" of pro grade	Existing 8"	Pro-6"	171	varies	683	25.3	0%	25.3
SR		Subsoil Excavate	Excavate Subsoil to within 6" of pro grade	Existing	Pro-1.5'	212	varies	366	13.6	0%	13.6
SS		Subsoil Excavate	Excavate Subsoil to within 6" of pro grade (80 sq ft from cross section x 11 ft width)			177	varies	880	32.6	0%	32.6
ST		Subsoil Excavate	Excavate subsoil (-8") to 2' depth below proposed grade	Existing -8"	Pro-2'	84	varies	427	15.8	0%	15.8
SW		Subsoil Excavate	Excavate Subsoil to within 3.5' feet of proposed subgrade	Existing-8"	Pro-4ft	28	varies	115	4.3	0%	4.3
SW		Subsoil Excavate	Excavate subsoil to within 2' of proposed subgrade	Existing-8"	Pro-3ft	86	varies	410	15.2	0%	15.2
WO		Subsoil Excavate	Excavate Subsoil to within 6" of pro grade	Ex-3	Pro5-6"	203	varies	41	1.5	0%	1.5
WP		Subsoil Excavate	Excavate Subsoil to within 6" of pro grade	Ex-3	Pro5-6"	51	varies	49	1.8	0%	1.8
WS		Subsoil Excavate	Excavate subsoil from existing wall for proposed wall, excludes wall volume (30 sq ft on cross section x 11 ft width)			60	varies	330	12.2	0%	12.2
WW		Subsoil Excavate	Excavate subsoil from existing wall for proposed wall, excludes wall volume	HudsonSur2011-03-21.dtm	Pro5-5.29	116	varies	543	20.1	0%	20.1
WO		Subsoil Place	Place subsoil to within 6" of pro grade	Ex-3	Pro5-6"	203	varies	-192	-7.1	0%	-7.1
WP		Subsoil Place	Place subsoil to within 6" of pro grade	Ex-3	Pro5-6"	51	varies	-9	-0.3	0%	-0.3
SA		Topsoil Excavate	Excavate 4" Topsoil			19	0.33	6	0.2	0%	0.2
SL		Topsoil Excavate	Excavate 4" Topsoil for all other walls			46	0.33	15	0.6	0%	0.6
SL		Topsoil Excavate	Excavate 4" Topsoil for top wall			88	0.33	29	1.1	0%	1.1
SO		Topsoil Excavate	Excavate 4" Topsoil			988	0.33	326	12.1	0%	12.1
SS		Topsoil Excavate	Excavate 4" Topsoil			177	0.33	58	2.2	0%	2.2
SD		Topsoil Place	Place 6" topsoil			207	-0.50	-104	-3.8	0%	-3.8
SO		Topsoil Place	Place 6" topsoil			988	-0.50	-494	-18.3	0%	-18.3
WO		Topsoil Place	Place 6" topsoil			203	-0.50	-102	-3.8	0%	-3.8
WP		Topsoil Place	Place 6" topsoil			51	-0.50	-26	-0.9	0%	-0.9
WO		Wall Remove	Remove existing wall, wall volume			203	3.00	609	22.6	0%	22.6
WP		Wall Remove	Remove existing wall, wall volume			51	3.00	153	5.7	0%	5.7
WS		Wall Remove	Remove existing wall, wall volume			60	3.00	180	6.7	0%	6.7
WW		Wall Remove	Remove existing wall, wall volume			116	3.00	348	12.9	0%	12.9

Hudson Beach

City of Madison, WI Public Works Contract #
Date Revised: 6/15/2012

Summary of stone (gravel) and soil quantities in the Bid Table.
Derived from more detailed spreadsheet available from Parks Div

Preliminary Computation Summary

Positive volumes are cuts (material available), negative volumes are fills (mat

Row Labels **Sum of Factored (Uncompacted) Volume (cu yd)**

Gravel Place	-91
Pea Gravel Place	-4
Riprap Excavate	7
Riprap Place	-37
Sand Excavate	22
Sand Place	-8
Subsoil Excavate	263
Subsoil Place	-7
Topsoil Excavate	16
Topsoil Place	-27
Wall Remove	48
Clear Stone Place	-53
Grand Total	129

Reorganized into Bid Table Items:

Gravel Place	= Bid Item #90014 Clear Stone D.O.T. Gradation No. 4
Pea Gravel Place	= Bid Item #90002 Stone Mulch
Riprap Excavate	= Bid Item #20101 Excavation Cut
Riprap Place	= Bid Item # 20230 Heavy Riprap (Glacial Stone) Import & Bid Item # 90012 Heavy Riprap (Glacial Stone) Place
Sand Excavate	= Bid Item #90009 Sand Removal and Place
Sand Place	= Bid Item #90009 Sand Removal and Place
Subsoil Excavate	= Bid Item #20101 Excavation Cut
Subsoil Place	= Bid Item #20101 Excavation Cut
Topsoil Excavate	= Bid Item #20221 Topsoil
Topsoil Place	= Bid Item #20221 Topsoil
Wall Remove	= Bid Item #90005 Remove Ex. Limestone & CMP
Clear Stone Place	= Bid Item #20217 Clear Stone

City of Madison
Department of Public Works
PARK DIVISION
City-County Building, Suite 104
210 Martin Luther King, Jr. Blvd.
PO Box 2987
Madison, WI 53701-2987



PROJECT:

HUDSON PARK IMPROVEMENTS

HUDSON PARK
2713 Lakeland Ave.
Madison, WI 53704

Although every effort has been made in preparing these plans and checking them for accuracy, the contractor and subcontractors must check all details and dimensions of their trade and be responsible for the same.

ITEM	DATE
Drawn by: SCL	08-15-2011
Revised by: SCL	10-10-2011
Revised by: SCL	12-28-2011
Revised by: SCL	01-17-2012
Revised by: SCL	01-23-2012
Revised by: SCL	05-30-2012
Revised by: SCL	06-15-2012

PUBLIC WORKS PROJECT #:
6859

SHEET TITLE:
DESIGN COMPUTATIONS

SHEET NUMBER:

X-1