

Madison, Wisconsin

# CITY OF MADISON

## MADISON WATER UTILITY

### DEPARTMENT OF PUBLIC WORKS

# PLAN OF PROPOSED IMPROVEMENT

PUBLIC IMPROVEMENT PROJECT APPROVED

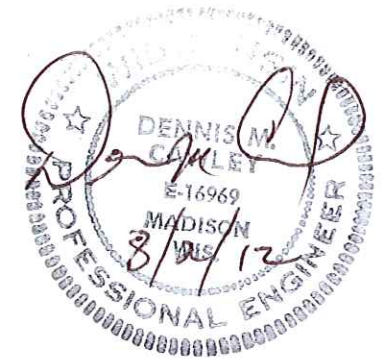
AUGUST 7, 2012

BY THE COMMON COUNCIL OF MADISON, WISCONSIN

WATER SYSTEM IMPROVEMENTS APPROVED BY:

*[Signature]* 8/2/12  
Principal Engineer Date

WATER DESIGNED BY:



#### INDEX OF SHEETS

0	TITLE
A-1	ALIGNMENTS AND CONTROL
W-1	WATER MAIN PLAN AND PROFILE
W-2	WATER IMPACT PLAN
W-3	MATERIALS AND STANDARD DETAILS

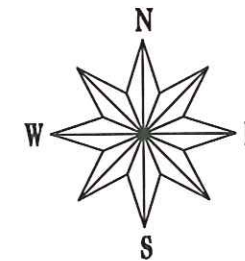
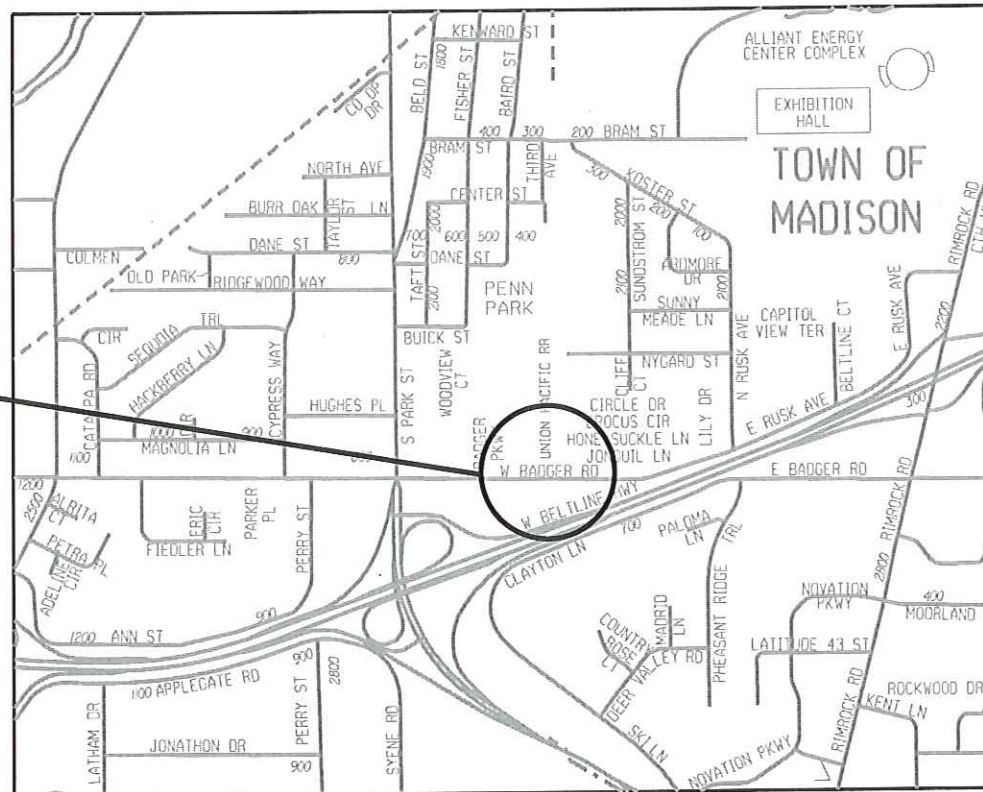
## 600 BLOCK WEST BADGER ROAD WATER MAIN 2012

CITY PROJECT NO. 53W1486

CITY CONTRACT NO. 6931

CONVENTIONAL SIGNS	
FIELD VERIFY ALL UTILITY LOCATIONS	
GAS	— G —
STORM SEWER	— ST —
SANITARY SEWER	— SAN —
WATER	— W —
OVERHEAD ELECTRIC	— OH —
POWER POLE	⊕
ADA COMPLIANT RAMP W/ DETECTABLE WARNING FIELD	
COMBUSTIBLE FLUIDS	

### CONSTRUCTION PROJECT LOCATION

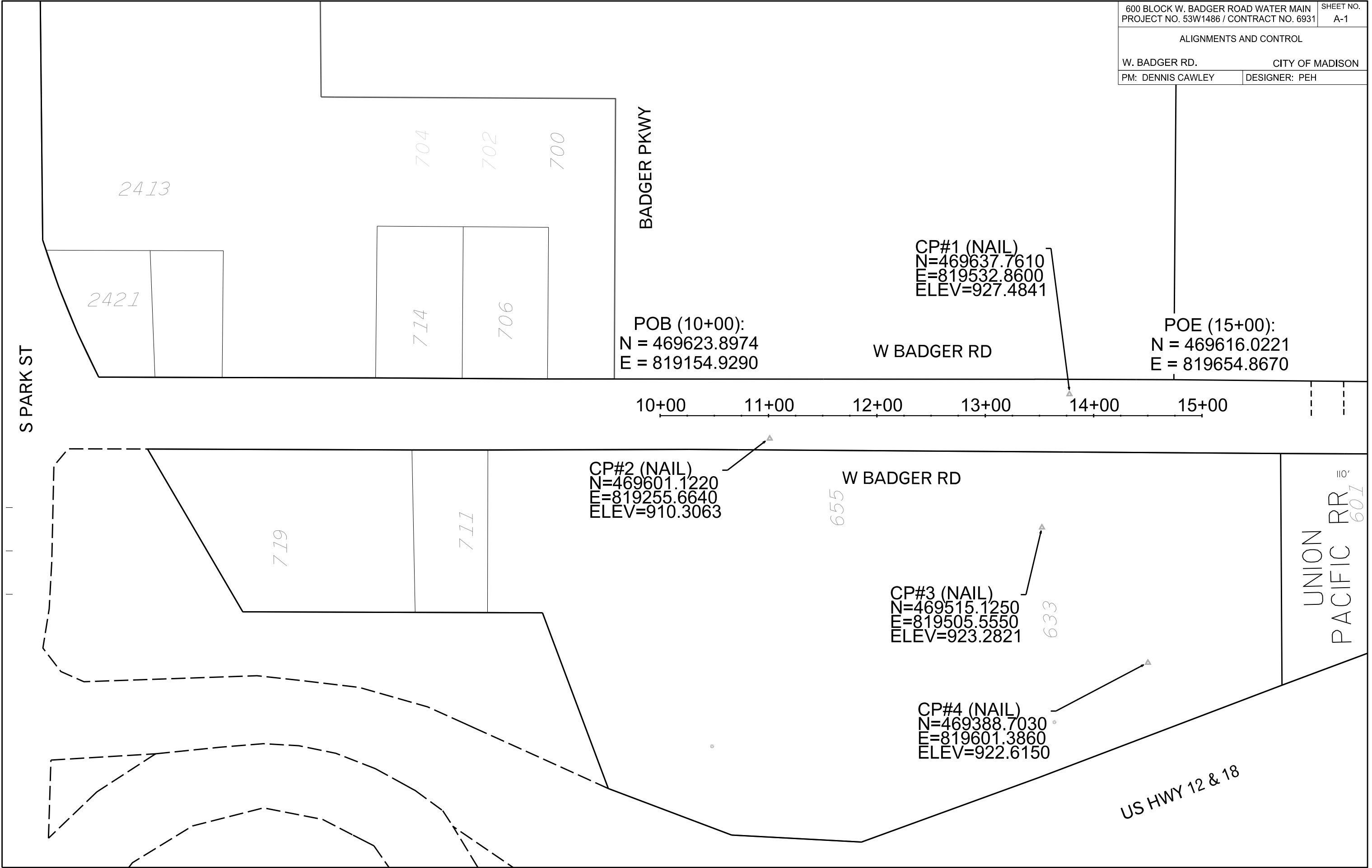


PLOT SCALE:

PLOT NAME:

REV. DATE:

ORIGINATOR: CITY OF MADISON, STREETS DIVISION



POB (10+00):  
 N = 469623.8974  
 E = 819154.9290

CP#1 (NAIL)  
 N=469637.7610  
 E=819532.8600  
 ELEV=927.4841

POE (15+00):  
 N = 469616.0221  
 E = 819654.8670

CP#2 (NAIL)  
 N=469601.1220  
 E=819255.6640  
 ELEV=910.3063

CP#3 (NAIL)  
 N=469515.1250  
 E=819505.5550  
 ELEV=923.2821

CP#4 (NAIL)  
 N=469388.7030  
 E=819601.3860  
 ELEV=922.6150

PLOT SCALE: \_\_\_\_\_

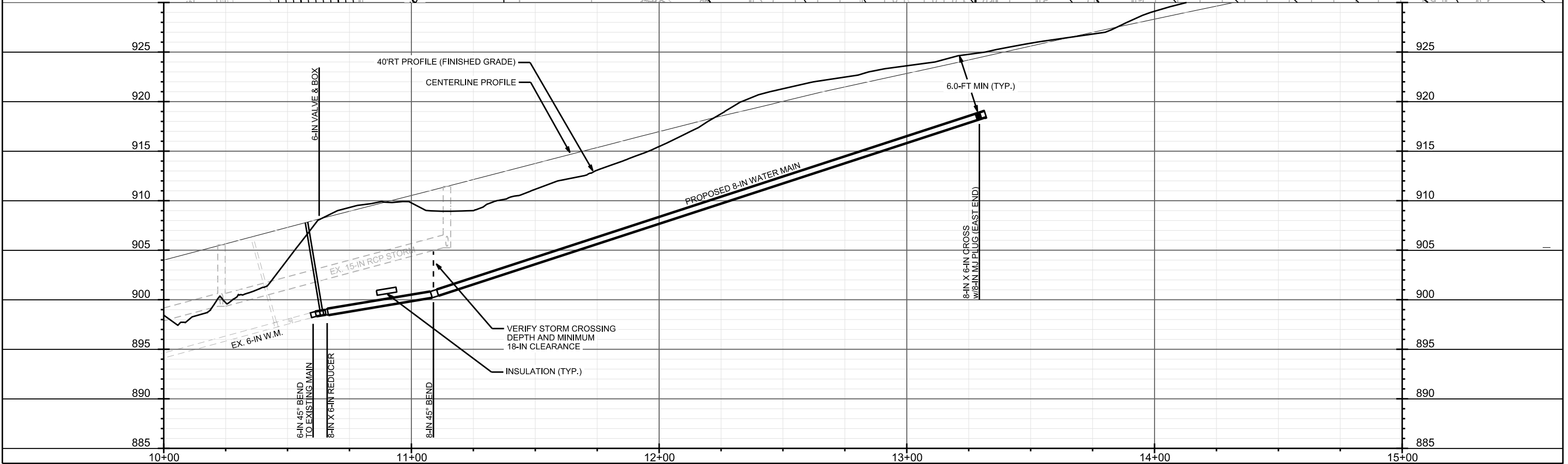
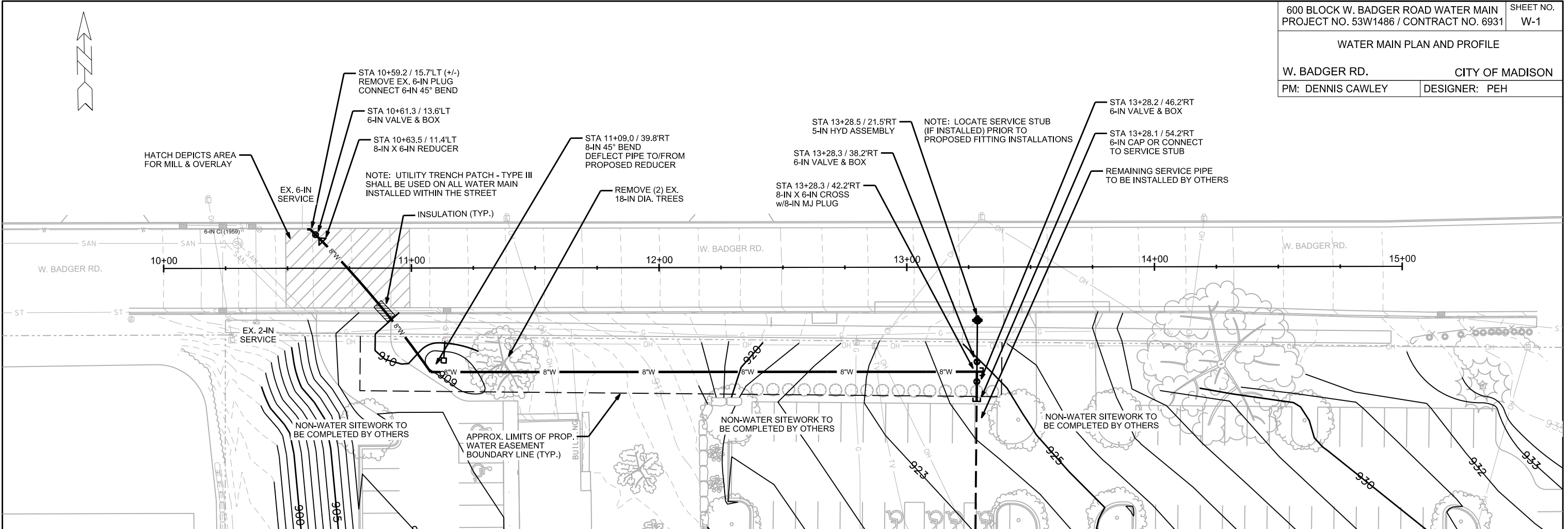
PLOT NAME: \_\_\_\_\_

REV. DATE: \_\_\_\_\_

ORIGINATOR: CITY OF MADISON, STREETS DIVISION

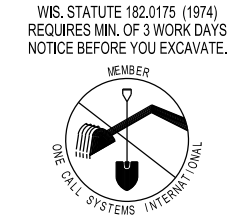
WATER MAIN PLAN AND PROFILE

W. BADGER RD. CITY OF MADISON  
 PM: DENNIS CAWLEY DESIGNER: PEH

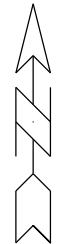


PLOT SCALE: \_\_\_\_\_  
 PLOT NAME: \_\_\_\_\_  
 REV. DATE: \_\_\_\_\_  
 ORIGINATOR: CITY OF MADISON, STREETS DIVISION

TO OBTAIN LOCATION OF PARTICIPANTS' UNDERGROUND FACILITIES BEFORE YOU DIG IN WISCONSIN  
 CALL DIGGERS HOTLINE TOLL FREE  
 811 OR 1-800-242-8511  
 FAX-A-LOCATE 1-800-338-3860  
 TDD (FOR HEARING IMPAIRED) 1-800-542-2289

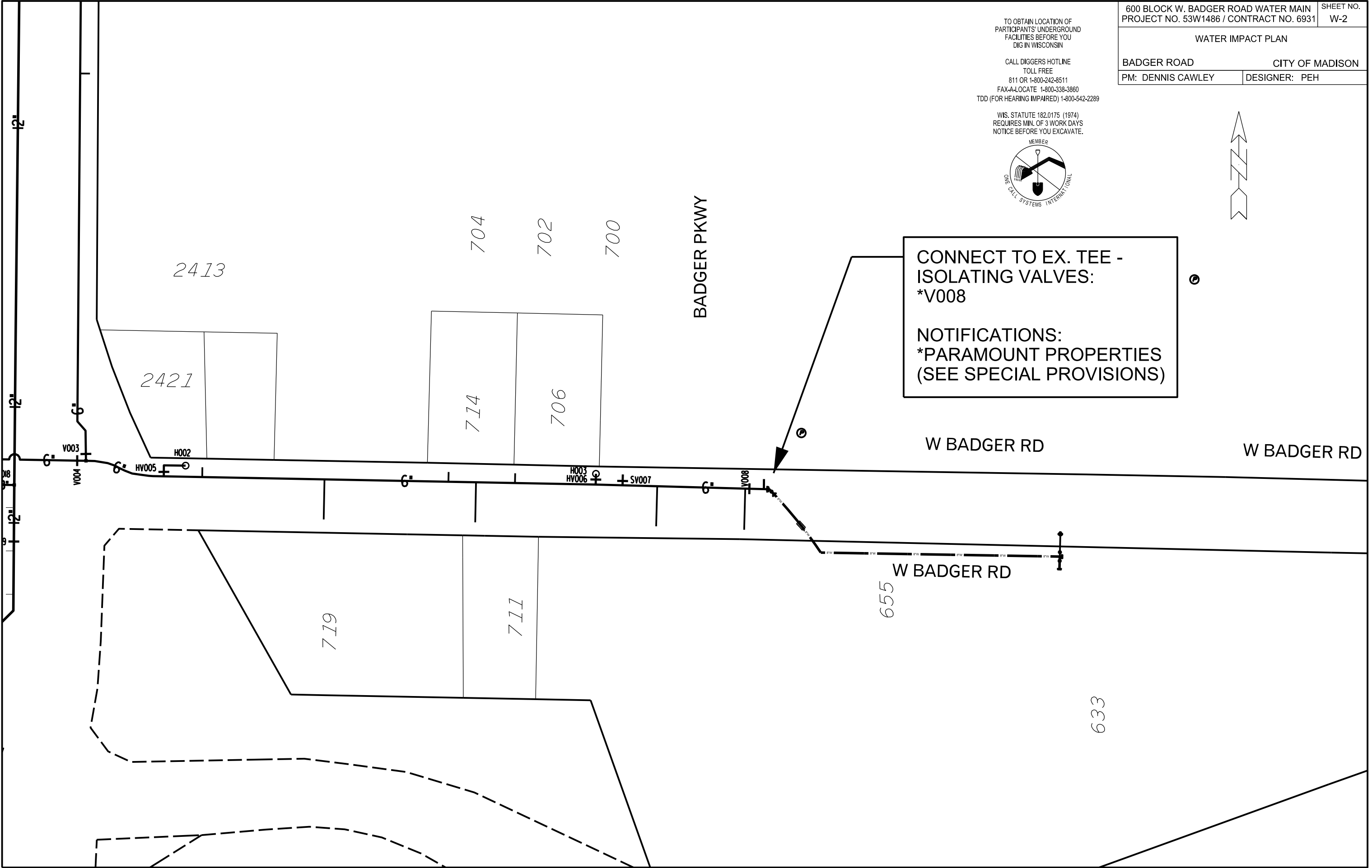


WIS. STATUTE 182.0175 (1974)  
 REQUIRES MIN. OF 3 WORK DAYS  
 NOTICE BEFORE YOU EXCAVATE.



CONNECT TO EX. TEE - ISOLATING VALVES:  
 \*V008

NOTIFICATIONS:  
 \*PARAMOUNT PROPERTIES  
 (SEE SPECIAL PROVISIONS)



PLOT SCALE: \_\_\_\_\_

PLOT NAME: \_\_\_\_\_

REV. DATE: \_\_\_\_\_

ORIGINATOR: CITY OF MADISON, STREETS DIVISION

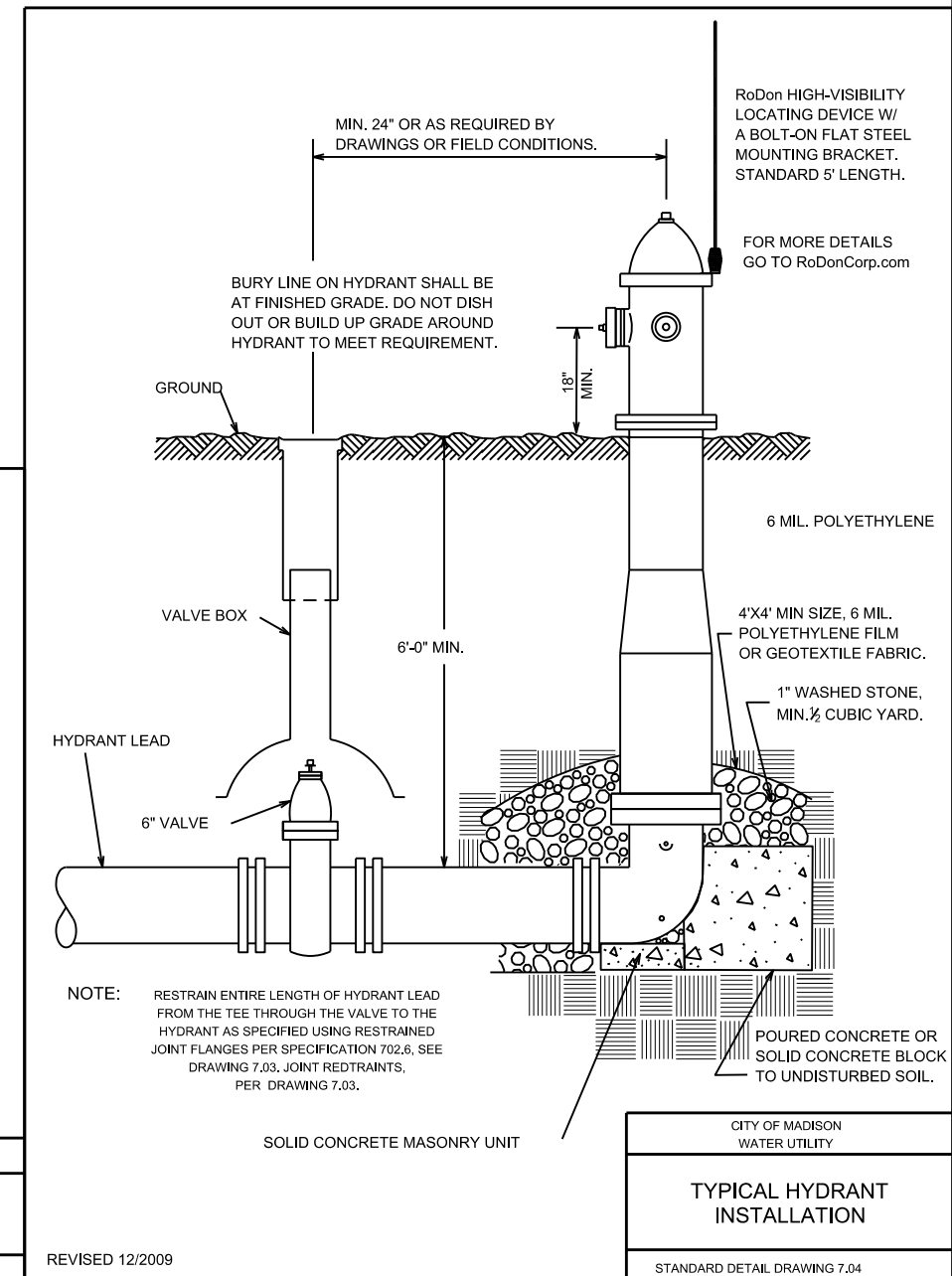
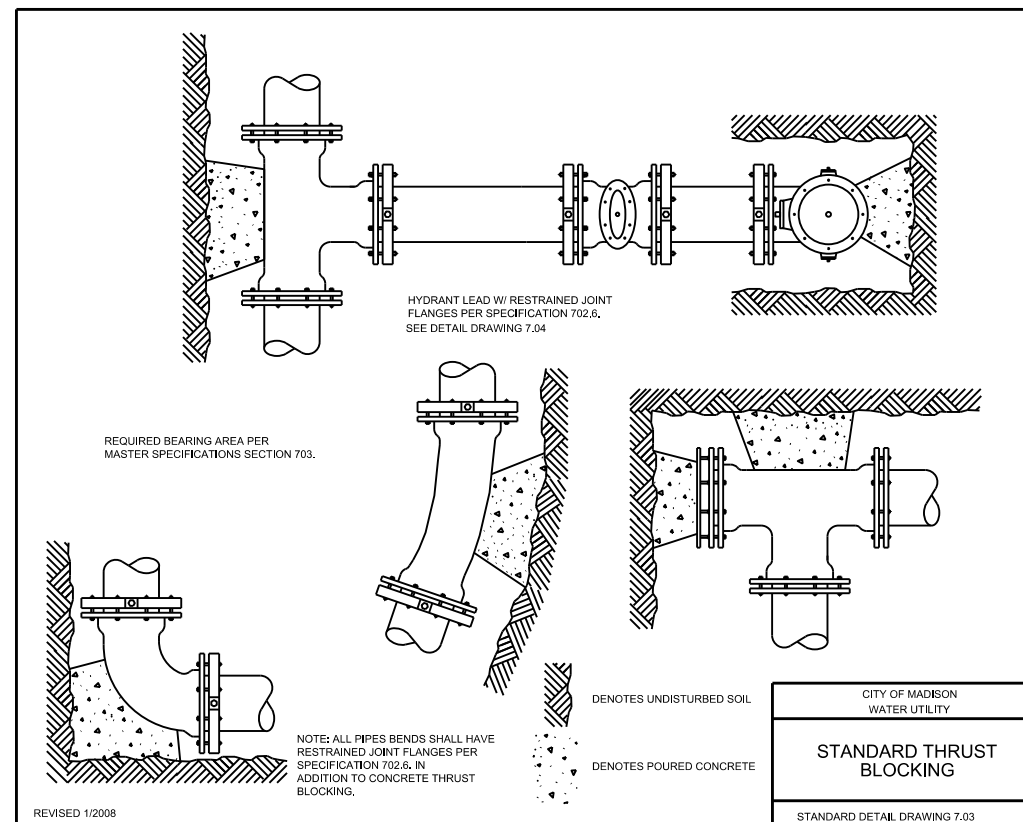
# CONSTRUCTION NOTES:

1. CONSTRUCT NEW WATER MAIN 6.0' BELOW FINISHED GRADE, UNLESS OTHERWISE NOTED. INSULATE MAIN WITH POLYSTYRENE BOARD AT UTILITY CROSSINGS OR OTHER AREAS IDENTIFIED BY ENGINEER AS HAVING INADEQUATE COVER.
  2. VERIFY SIZE OF EXISTING WATER SERVICES AND RECONNECT SERVICES AS INDICATED.
  3. MINIMIZE DISTRUPTION OF SERVICE TO EXISTING CUSTOMERS. NOTIFY PER CONTRACT REQUIREMENTS OF ANY PLANNED WATER OUTAGE.
  4. EXISTING WATER MAIN SHALL REMAIN IN SERVICE UNTIL NEW WATER MAIN IS TESTED AND ACCEPTED BY MADISON WATER UTILITY AND ALL SERVICES ARE RECONNECTED.
  5. THE EXISTING UTILITIES SHOWN ON THIS PLAN REPRESENT THE BEST INFORMATION AVAILABLE TO THE WATER UTILITY AT THE TIME OF PLAN PREPARATION. LOCATE EACH UTILITY PRIOR TO COMMENCING WORK.
- WN1 REPLACE THE EXISTING LEAD SERVICE WITH A COPPER SERVICE.
  - WN2 EXTEND AND RECONNECT THE EXISTING COPPER SERVICE TO THE NEW WATER MAIN.
  - WN3 EXISTING SERVICE TO BE ABANDONED WHEN THE WATER MAIN IS CUT OFF.
  - WN4 DISCONNECT FROM THE OLD WATER MAIN AND RECONNECT THE EXISTING COPPER WATER SERVICE LATERAL TO THE NEW WATER MAIN.
  - WN5 RELOCATE THE EXISTING FIRE HYDRANT.
  - WN6 ABANDON WATER VALVE ACCESS STRUCTURE.
  - WN7 FURNISH AND INSTALL THE NEW TOP SECTION FOR THE WATER ACCESS STRUCTURE.
  - WN8 ABANDON THE VALVE BOX.
  - WN9 FURNISH THE DITCH, COMPACTION, AND ALL MATERIALS AND LABOR FOR THE INSTALLATION OF NEW SERVICE LATERAL.
  - WN10 REMOVE/SALVAGE HYDRANT.
  - WN11 REPLACE THE EXISTING COPPER SERVICE WITH A NEW COPPER SERVICE.

# ESTIMATE OF MATERIALS SUPPLIED BY CONTRACTOR:

\* ESTIMATE OF MATERIALS IS FOR INFORMATION ONLY. ENGINEER DOES NOT GUARANTEE ACCURACY OF MATERIAL TAKE-OFF.

- 40-FT - 6-IN PIPE
- 300-FT - 8-IN PIPE
- 375-FT - POLYWRAP
- 350-FT - SELECT FILL (OR AS REQ'D, SEE SPECS)
- 1 - 5-IN HYDRANT
- 3 - 6-IN VALVE & BOX
- 1 - 8-IN X 6-IN CROSS
- 1 - 8-IN X 6-IN REDUCER
- 1 - 6-IN 45° BEND
- 1 - 8-IN 45° BEND
- 1 - 6-IN MJ CAP (AS REQ'D)
- 1 - 8-IN MJ PLUG



DISCLAIMER NOTE: UTILITY LOCATIONS SHOWN ARE APPROXIMATE ONLY. IT SHALL BE THE CONTRACTOR'S RESPONSIBILITY TO DETERMINE THE EXACT HORIZONTAL AND VERTICAL LOCATION OF ALL EXISTING UNDERGROUND AND OVERHEAD UTILITIES PRIOR TO COMMENCING WORK.	600 BLOCK W. BADGER ROAD WATER MAIN PROJECT NO. 53W1486 / CONTRACT NO. 6931	SHEET NO. W-3
MATERIALS AND STANDARD DETAILS		
WEST BADGER ROAD		CITY OF MADISON
PM: DENNIS CAWLEY	DESIGNER: PEH	

TO OBTAIN LOCATION OF PARTICIPANTS' UNDERGROUND FACILITIES BEFORE YOU DIG IN WISCONSIN  
CALL DIGGERS HOTLINE TOLL FREE  
811 OR 1-800-242-8511  
FAX-A-LOCATE 1-800-338-3860  
TDD (FOR HEARING IMPAIRED) 1-800-542-2289

WIS. STATUTE 182.0175 (1974) REQUIRES MIN. OF 3 WORK DAYS NOTICE BEFORE YOU EXCAVATE.

