



Electrical Panel Upgrade

MADISON MUNICIPAL BUILDING

215 Martin Luther King Jr. Blvd.
Madison, WI 53701-2984

City of Madison

Contract #6965 Bid Drawing

Sheet Index:

TS-1 TITLESHEET

E-1 LOWER LEVEL ELECTRICAL DEMOLITION & REMODELING

E-2 1st FLOOR ELECTRICAL PLAN

E-3 2nd FLOOR ELECTRICAL PLAN

E-4 3rd FLOOR ELECTRICAL PLAN

E-5 EXISTING POWER RISER DIAGRAM

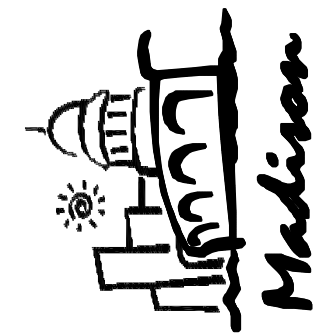
E-6 NEW POWER RISER DIAGRAM

CONSULTING ENGINEERS:

HEIN Engineering Group
319 W. BELTLINE HWY, SUITE III
MADISON, WI 53713
Phone: (608) 288-9260
Fax: (608) 288-9282
E-MAIL: hein@chorus.net

Consultants
HEIN
Engineering
Group
319 W. BELTLINE HWY
SUITE III
MADISON, WI 53713
Phone: (608) 288-9260
Fax: (608) 288-9282
E-MAIL: hein@tis.com
PROJECT NO. H509

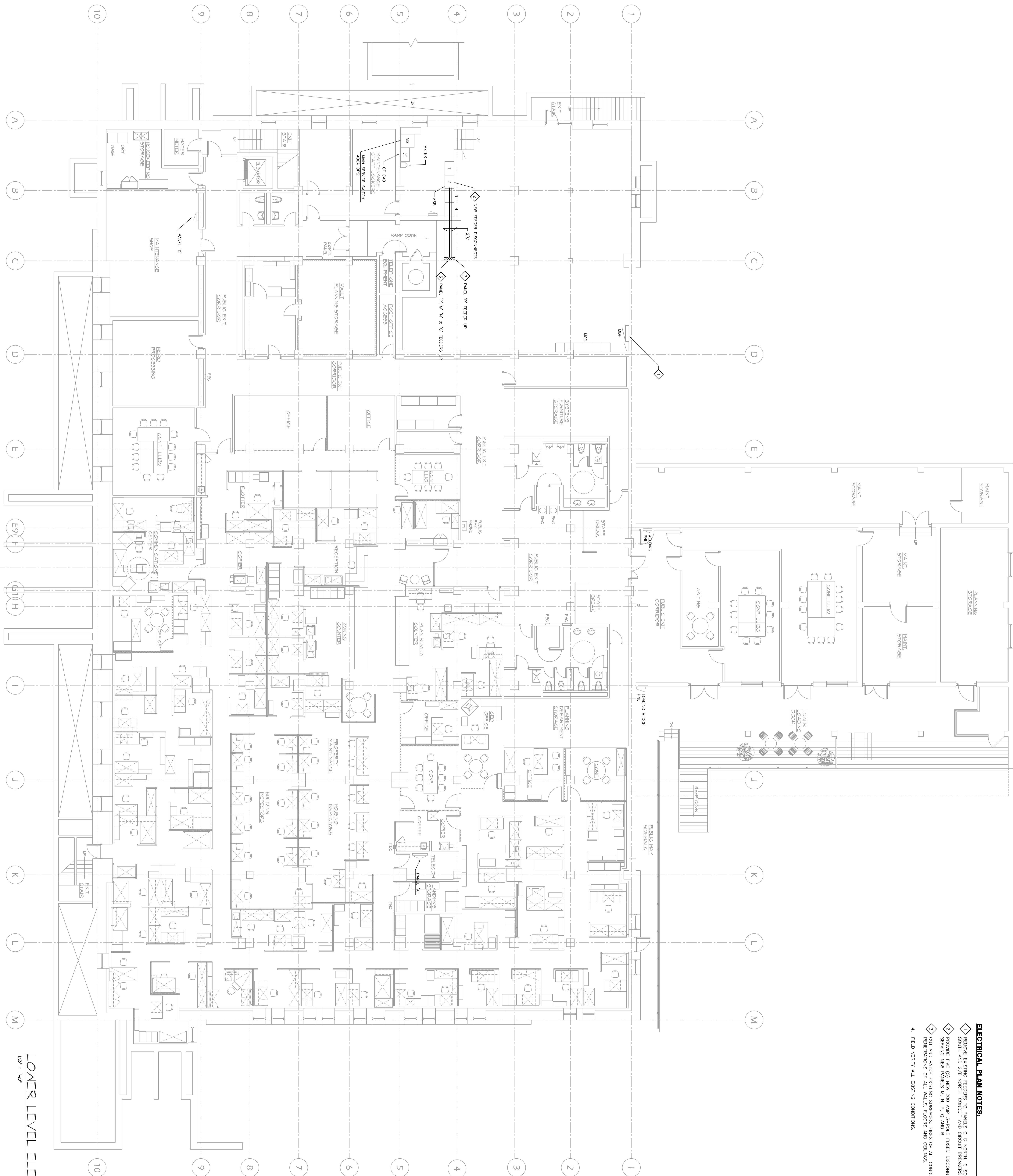
Electrical Panel Upgrade
MADISON MUNICIPAL BUILDING
215 Martin Luther King Jr. Blvd.
Madison, WI 53701-2984



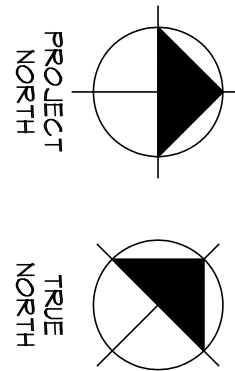
DATE		ISSUED FOR	
6-11-09	DESIGN DEVELOPMENT	6-11-09	DESIGN DEVELOPMENT
8-15-09	10% REVIEW DOCUMENTS	8-15-09	10% REVIEW DOCUMENTS
11-2-09	100% REVIEW DOCUMENTS	11-2-09	100% REVIEW DOCUMENTS
1-30-12	BIDDING DOCUMENTS	1-30-12	BIDDING DOCUMENTS
DAS	MH	H509	

Sheet Number

TS-1



LOMER LEVEL ELECTRICAL PLAN



ELECTRICAL PLAN NOTES:

1. REMOVE EXISTING FEEDERS TO PANELS C-D NORTH, C-SOUTH, H/E SOUTH AND G/E NORTH. CONDUIT AND CIRCUIT BREAKERS TO REMAIN.
2. PROVIDE FIVE (5) NEW 200 AMP 3-POLE TUSED DISCONNECTS SERVING NEW PANELS M, N, P, Q AND R.
3. CUT AND PATCH EXISTING SURFACES. FIRESTOP ALL CONDUIT PENETRATIONS FOR ALL WALLS, FLOORS AND CEILINGS.
4. FIELD VERIFY ALL EXISTING CONDITIONS.

Consultants:

HEIN
Engineering
Group

319 N. BELTLINE HWY
SUITE III
MADISON, WI 53713
Phone: (608) 288-9260
Fax: (608) 288-9282
E-MAIL: help@its.com

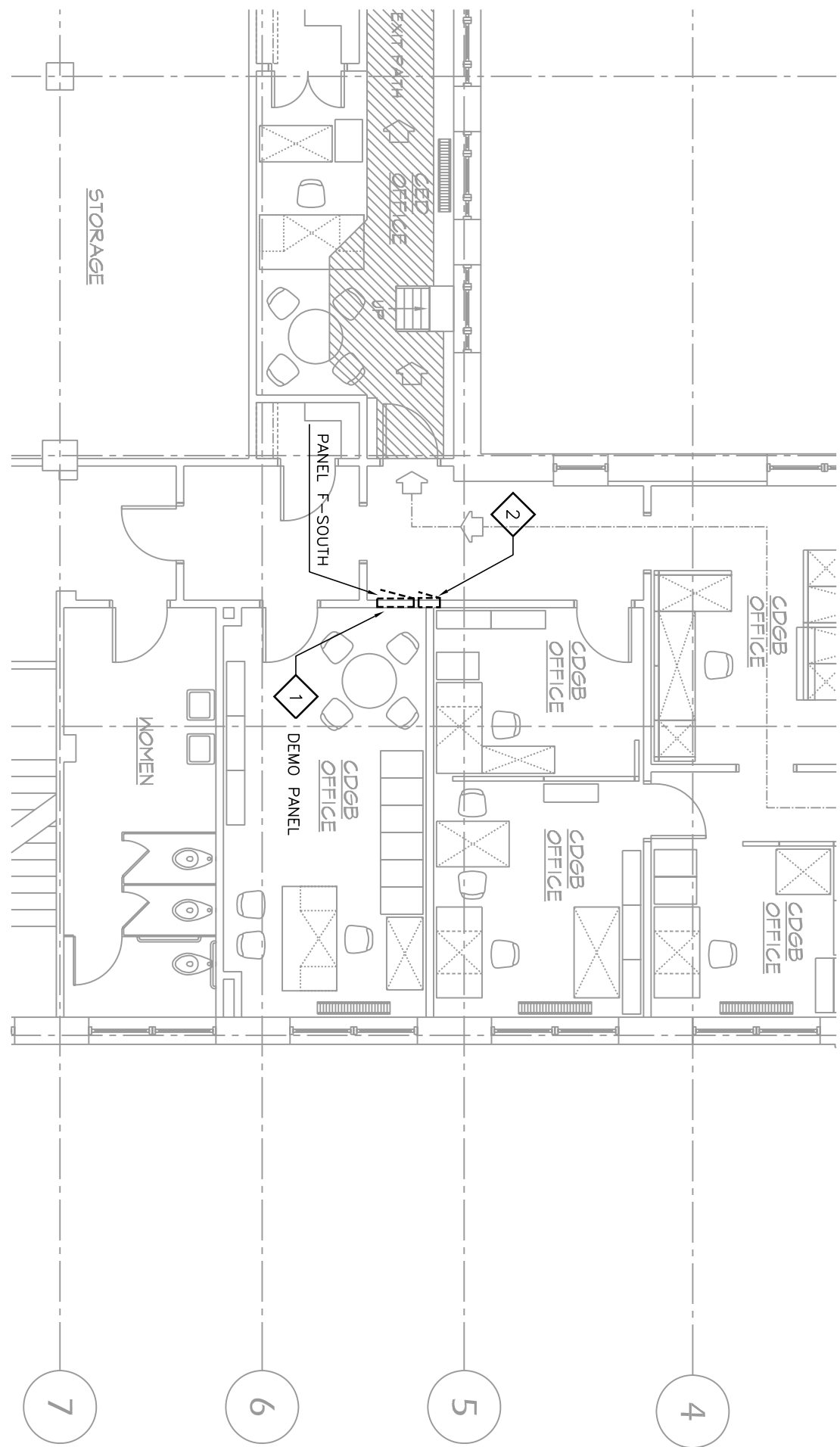
PROJECT NO. H50

DAS MH H509	DATE:	ISSUED FOR:
	8-19-05	DESIGN DEVELOPMENT
	9-13-05	70% REVIEW DOCUMENTS
	11-2-05	100% REVIEW DOCUMENTS
	7-30-12	BIDDING DOCUMENTS

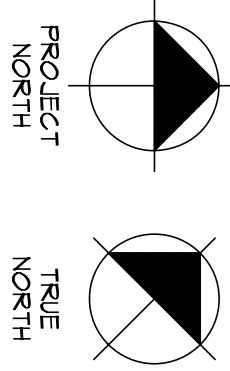
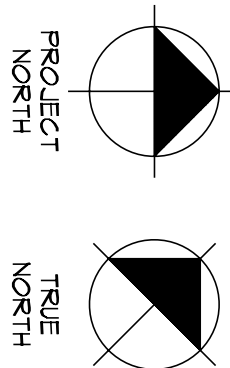


Electrical Panel Upgrade

MADISON MUNICIPAL BUILDING
215 Martin Luther King Jr. Blvd.
Madison, WI 53701-2984



PARTIAL SECOND FLOOR ELECTRICAL DEMOLITION PLAN

PARTIAL SECOND FLOOR ELECTRICAL DEMOLITION PLAN
1/8" = 1'-0"

1. DISCONNECT & REMOVE POWER FEEDERS TO EXISTING PANEL FOR REUSE WITH NEW TERMINATION BLOCK.
 2. REMOVE EXISTING TELEPHONE HINGED PANEL COVER.
 3. REMOVE EXISTING LIGHT SWITCH FOR REPLACEMENT WITH NEW PLANT.
- Removal of light switch shall be completed by the owner at a later date.

Removal of light switch shall be completed by the owner at a later date

- ## ELECTRICAL PLAN NOTES:
1. INSTALL NEW SURFACE-MOUNTED DISTRIBUTION PANEL AT EXISTING WALL WITH FEEDING TO NEW EXISTING BRANCH CIRCUITS FROM TERMINAL BLOCK. EXISTING CIRCUIT DEVICES SERVED & LABEL DEVICES & PANEL CIRCUIT DISTRIBUTION ACCORDINGLY.
 2. EXISTING EXISTING DISTRIBUTION PANEL ENCLOSEDURE WITH NEW SURFACE-MOUNTED DISTRIBUTION PANEL ENCLOSEDURE TO BE REMOVED TO NEW PANELBOARD. FIELD VENTRY PANEL LOCATION & SIZE TO BE DETERMINED BY ELECTRICAL.
 3. PROVIDE NEW INSULATING SPACE TERMINATION BLOCK ASSEMBLY FOR 30 BRANCH CIRCUITS WITH EQUIPMENT GROUND BAR.
 4. EXISTING EXISTING TELEPHONE PANEL, BOX AND PROVIDE UNIFIED PUSH-BUTTON ACCESS PANEL, COVER FIELD VENTRY EXISTING FIELD VENTRY ACCESS PANEL.
 5. 1" CONDUIT AND FEEDING UP AND DOWN C/L TO CORE DRILL FLOOR & FEEDING FOR NEW CONDUIT.
 6. EXISTING WALL WILL BE JACKETED OUT BY OWNER TO ENCLOSE NEW ELECTRICAL EQUIPMENT AT A LATER DATE. CORRESPONDING ELECTRICAL, MECHANICAL, PLUMBING, AND HVAC WORK SHALL BE COMPLETED PRIOR TO REMOVAL OF EXISTING WALL. LOCATION OF NEW PANEL SHALL BE DETERMINED BY THE OWNER BEFORE PROCEEDING WITH INSTALLATION.
 7. OUT & PATCH EXISTING SURFACES. FIRSTFLOOR ALL CONDUIT PENETRATIONS TO BE PATCHED & FINISHED.
 8. RELOCATION OF LIGHT SWITCH DEVICE BY OWNER.

Electrical Panel Upgrade

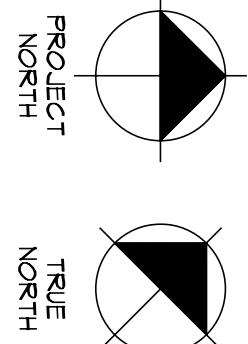
MADISON MUNICIPAL BUILDING
215 Martin Luther King Jr. Blvd.
Madison, WI 53701-2984



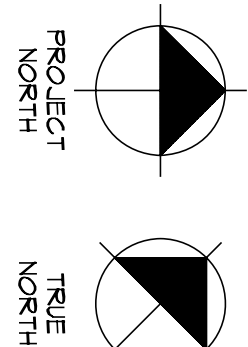
DAS MH H509	DATE:	ISSUED FOR:
	8-19-05	DESIGN DEVELOPMENT
	9-13-05	70% REVIEW DOCUMENTS
	11-2-05	100% REVIEW DOCUMENTS
	7-30-12	BIDDING DOCUMENTS

Sheet Number

DAS MH H509	DATE:	ISSUED FOR:
	8-19-05	DESIGN DEVELOPMENT
	9-13-05	70% REVIEW DOCUMENTS
	11-2-05	100% REVIEW DOCUMENTS
	7-30-12	BIDDING DOCUMENTS



PARTIAL THIRD FLOOR ELECTRICAL DEMOLITION PLAN

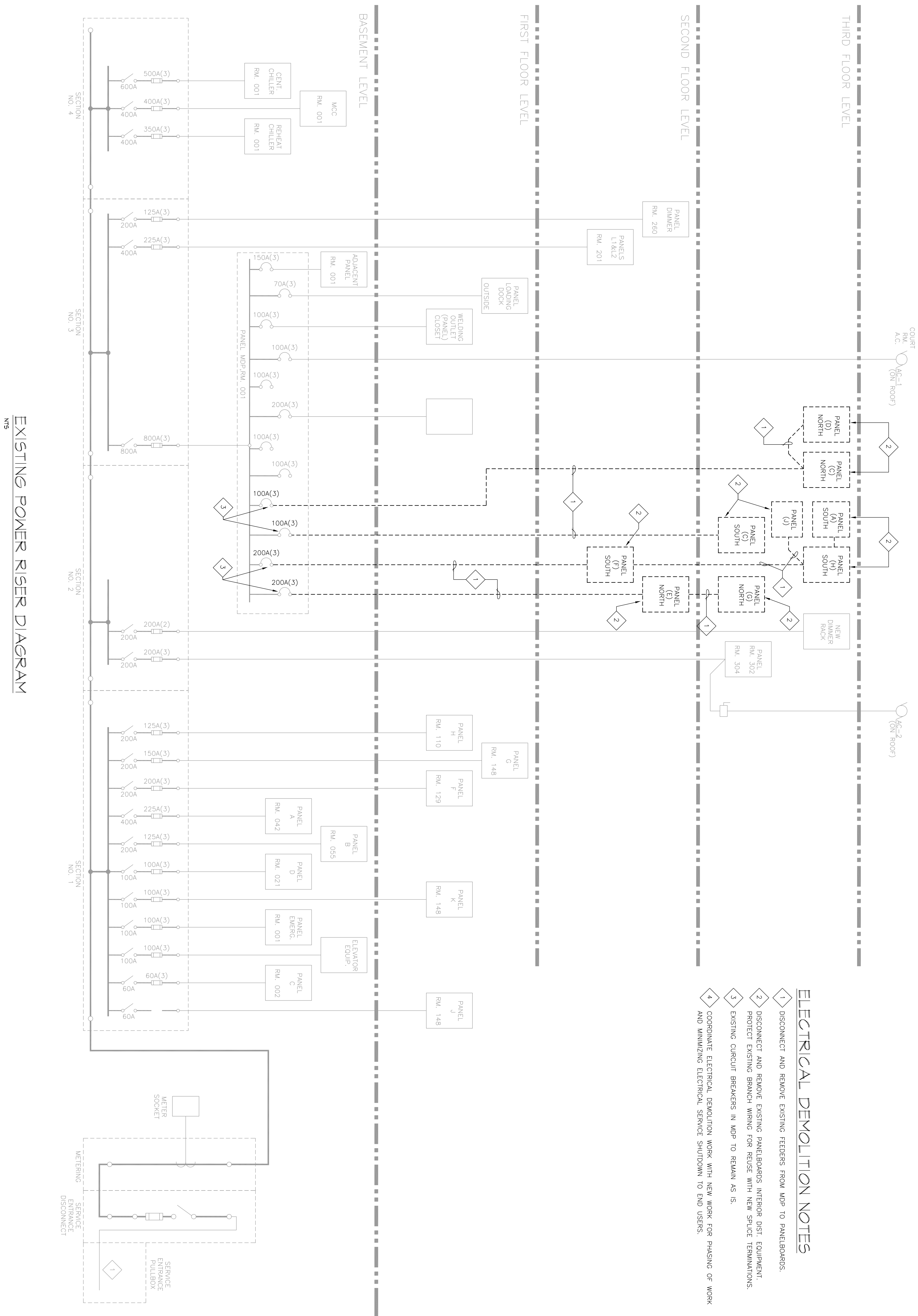


PARTIAL THIRD FLOOR ELECTRICAL DEMOLITION PLAN

- ### ELECTRICAL DEMOLITION NOTES:
1. DISCONNECT & REMOVE POWER FEEDERS TO EXISTING PANEL.
 2. REMOVE PANEL, INTERIOR DIST. AND PROTECT BRANCH WIRING FOR REUSE WITH NEW REFORMATION BLOCK.
 3. REMOVE EXISTING TELEPHONE HINGED PANEL COVER.
 4. REMOVE EXISTING LIGHT SWITCH FOR REPLACEMENT WITH NEW PLAIN.
- Removal of light switch shall be completed by the owner at a later date.

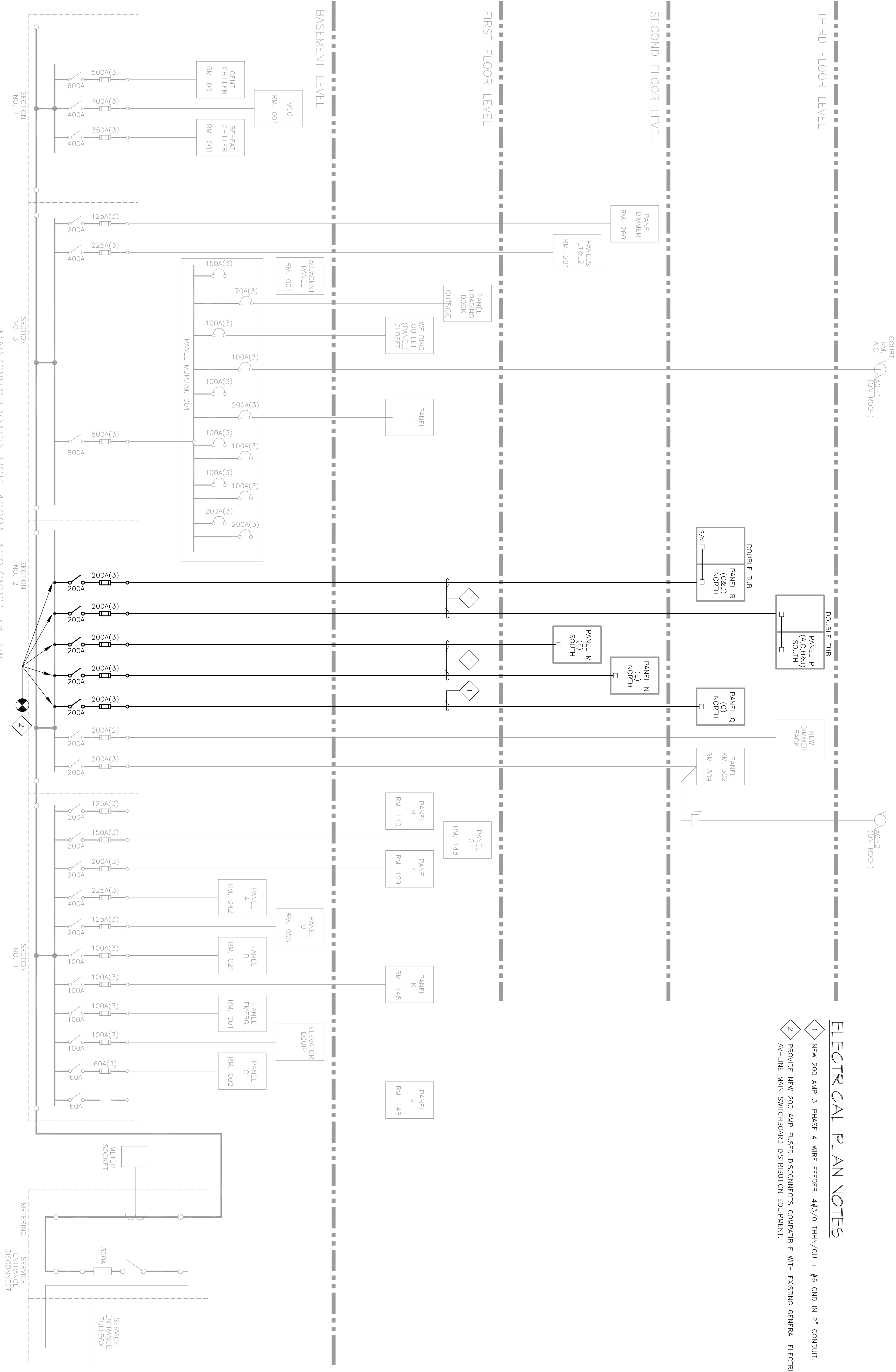
ELECTRICAL PLAN NOTES:

- [illegible]



- ## ELECTRICAL DEMOLITION NOTES
1. DISCONNECT AND REMOVE EXISTING FEEDERS FROM MDP TO PANELBOARDS.
 2. DISCONNECT AND REMOVE EXISTING PANELBOARDS INTERIOR DISC. EQUIPMENT. PROTECT EXISTING BRANCH WIRING FOR REUSE WITH NEW SPICE TERMINATIONS.
 3. EXISTING CIRCUIT BREAKERS IN MDP TO REMAIN AS IS.
 4. COORDINATE ELECTRICAL DEMOLITION WORK WITH NEW WORK FOR PHASING OF WORK AND MINIMIZING ELECTRICAL SERVICE SHUTDOWNS TO END USERS.

DAS	DATE:	ISSUED FOR:
	8/19/05	DESIGN DEVELOPEMENT
	9/13/05	70% REVIEW DOCUMENTS
	11-2-05	100% REVIEW DOCUMENTS
MH	7-30-12	BIDDING DOCUMENTS
H500		



ELECTRICAL PLAN NOTES

- 1 NEW 200 AMP 3-PHASE 4-WIRE FEEDER: 4/3/0 THHN/CU + #6 GND IN 2" CONDUIT.
- 2 PROVIDE NEW 200 AMP FUSED DISCONNECTS COMPATIBLE WITH EXISTING GENERAL ELECTRIC. 4W-LINE MAIN SWITCHBOARD DISTRIBUTION EQUIPMENT.



DATE:	ISSUED FOR:
8/19/05	DESIGN DEVELOPMENT
9/13/05	70% REVIEW DOCUMENTS
11-2-05	100% REVIEW DOCUMENTS
7-30-12	BIDDING DOCUMENTS

DESIGNED BY: DJS
CHECKED BY: WH
IN CHARGE: H509