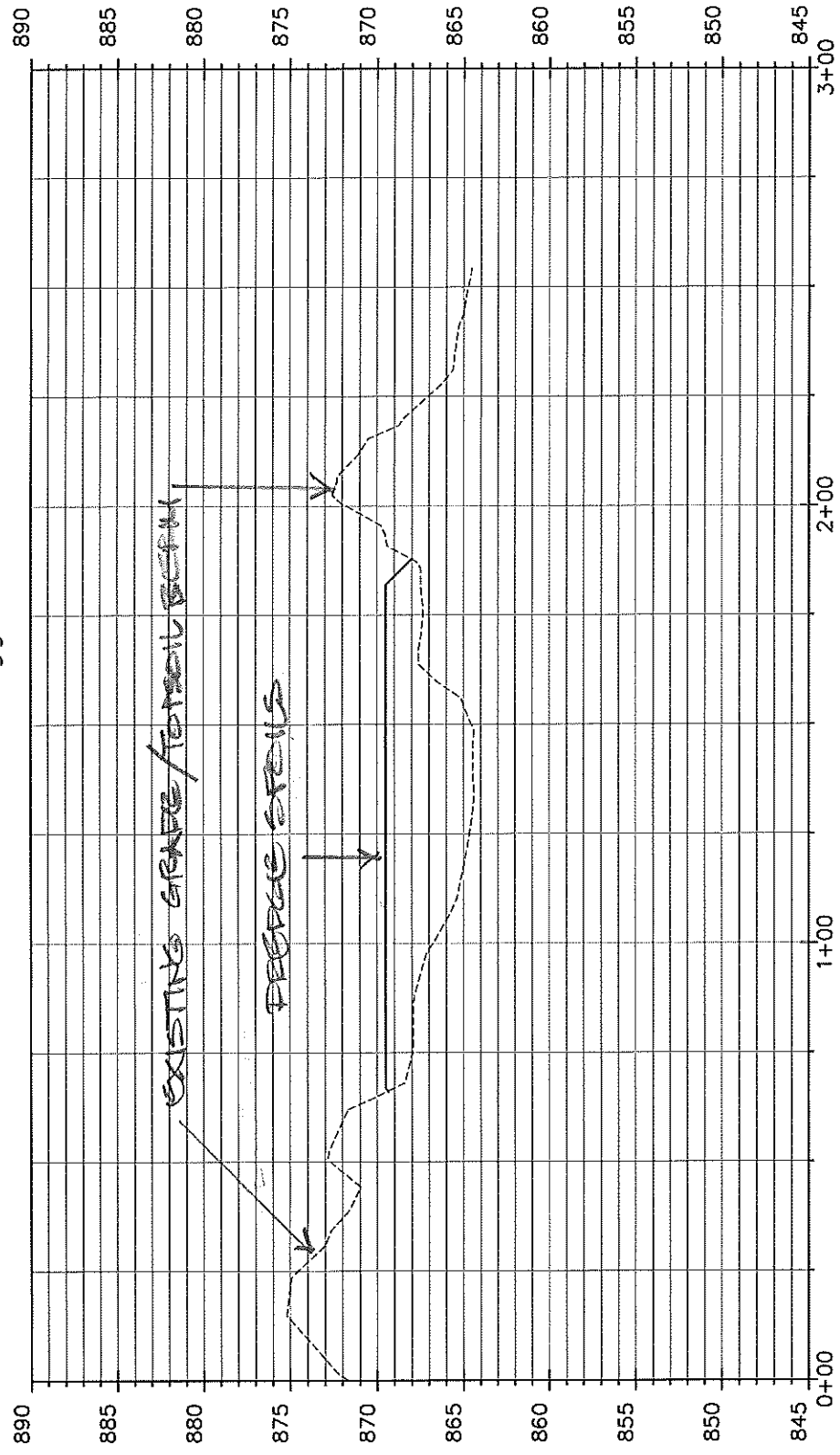
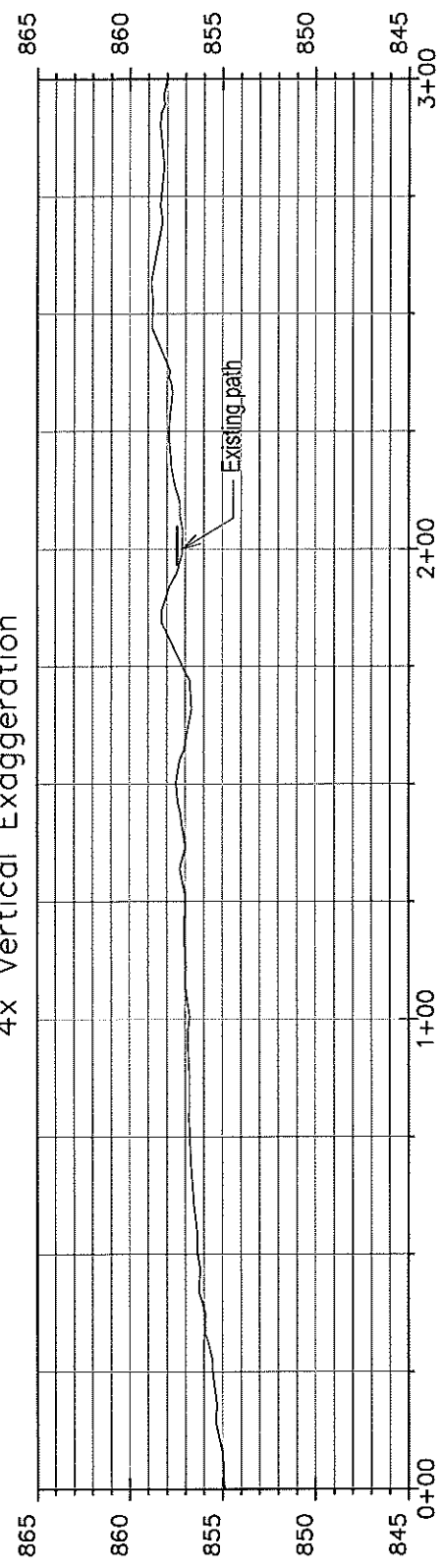


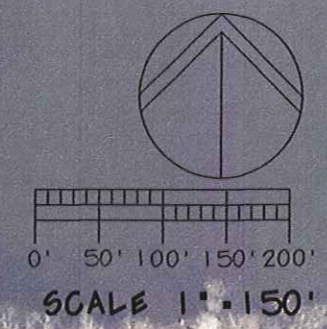
Cherokee Marsh Fill Site - Section A-A' Looking North  
4x Vertical Exaggeration



Cherokee Marsh Fill Site - Section B-B' Looking West  
4x Vertical Exaggeration







STREET SWEEPING ALL  
ALONG WOODWARD DR.  
AND IN BOAT LAUNCH  
PARKING LOT  
AS NEEDED FOR THE  
DURATION OF THE  
PROJECT

TYPE "C"  
INLET  
PROTECTION

STAGING  
AREA

435' OF  
TURBIDITY  
BARRIER

Warner BoatPro2.dtm  
Down to 844.6 ft out to 88 ft beyond  
edge of piers.

Warner BoatPro2.dtm  
Down to 844.6 ft out to 88 ft beyond  
edge of piers.

Dredge volume:  
DTM difference  
(relative to 11/8/2012 survey)  
= 59200 cu ft  
= 2192 cu yd

Dredge volume:  
DTM difference  
(relative to 11/8/2012 survey)  
= 59200 cu ft  
= 2192 cu yd

Add 0.2 ft x 28900 sq ft area of  
proposed dredging to account for  
uncertainty in survey = 5800 cu ft

Add 0.2 ft x 28900 sq ft area of  
proposed dredging to account for  
uncertainty in survey = 5800 cu ft

Total estimate  
= 65000 cu ft  
= 2400 cu yd

Total estimate  
= 65000 cu ft  
= 2400 cu yd

Appears to be mostly sand

Appears to be mostly sand

EROSION CONTROL PLAN  
WARNER BOAT LAUNCH

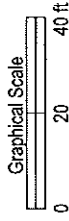
WARNER PARK BOAT LAUNCH DREDGE PROJECT

# HYDROGRAPHIC SURVEY - WARNER PARK BOAT LAUNCH

Located in the NE1/4 of Section 36, T08N R09E, City of Madison, Dane County, WI



Grid North, Dane County Coordinate System, NAD83(2007) Datum



## LEGEND

+2.6 Height (ft) of existing lake bottom below (-) or above (+) Target Summer Minimum water surface elevation of 849.6 ft NGVD29 datum.

## NOTES:

1. Address: 1201-1301 Farwell Drive  
Tax Parcel # 0809-362-0089-1

2. Dates of field work: Jan 20 & Mar 26-27, 2009.  
Lake bottom topography re-surveyed Nov 8 2012

3. All surface and subsurface improvements on and adjacent to the site are not necessarily shown.

4. Except as specifically stated or shown, this map does not show easements, building setbacks, zoning and land use restrictions, covenants, or any other restrictions or benefits that a current and accurate title search may disclose.

5. Horizontal coordinates are Dane County Coordinates, U.S. survey feet, NAD83(2007) datum, computed from a combined adjustment of total station measurements and RTK GPS measurements from the Emil Street base station (MAON) at 43°42'12.78277"N, 89°42'24.9427099"W (Easting 814396.30, Northing 469049.99 U.S. survey feet). The Wisconsin Coordinate Reference Systems (WISCRS) parameters were used to compute Easting, Northing coordinates. See [http://gis.cityofmadison.com/Madison\\_GPS/](http://gis.cityofmadison.com/Madison_GPS/) and [www.sco.wisc.edu/coordsys/](http://www.sco.wisc.edu/coordsys/)

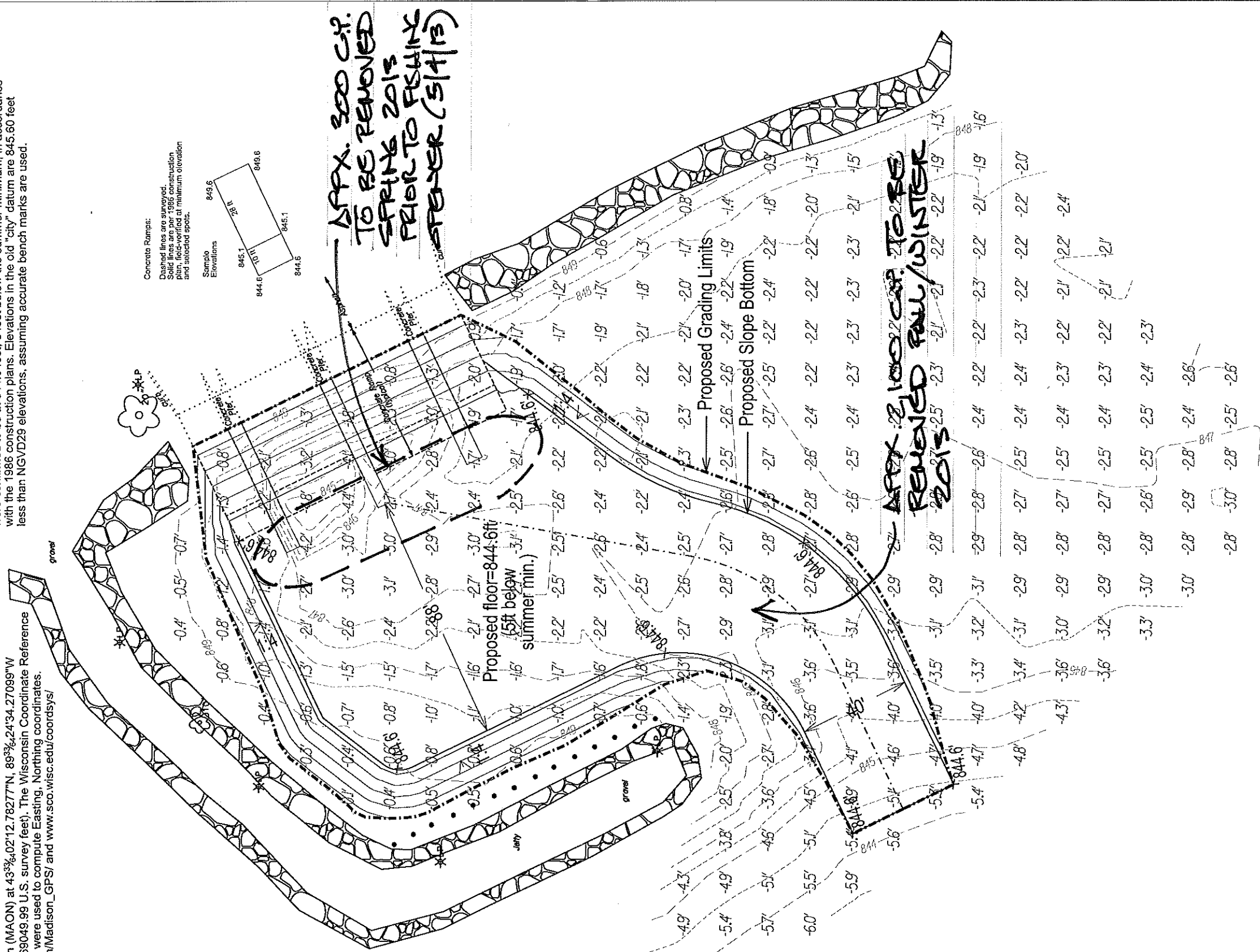
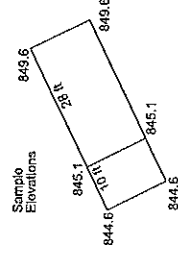
SURVEYED FOR:  
Parks Division, City of Madison, Wisconsin  
PO Box 2987, Madison, WI 53701 (608)266-4711

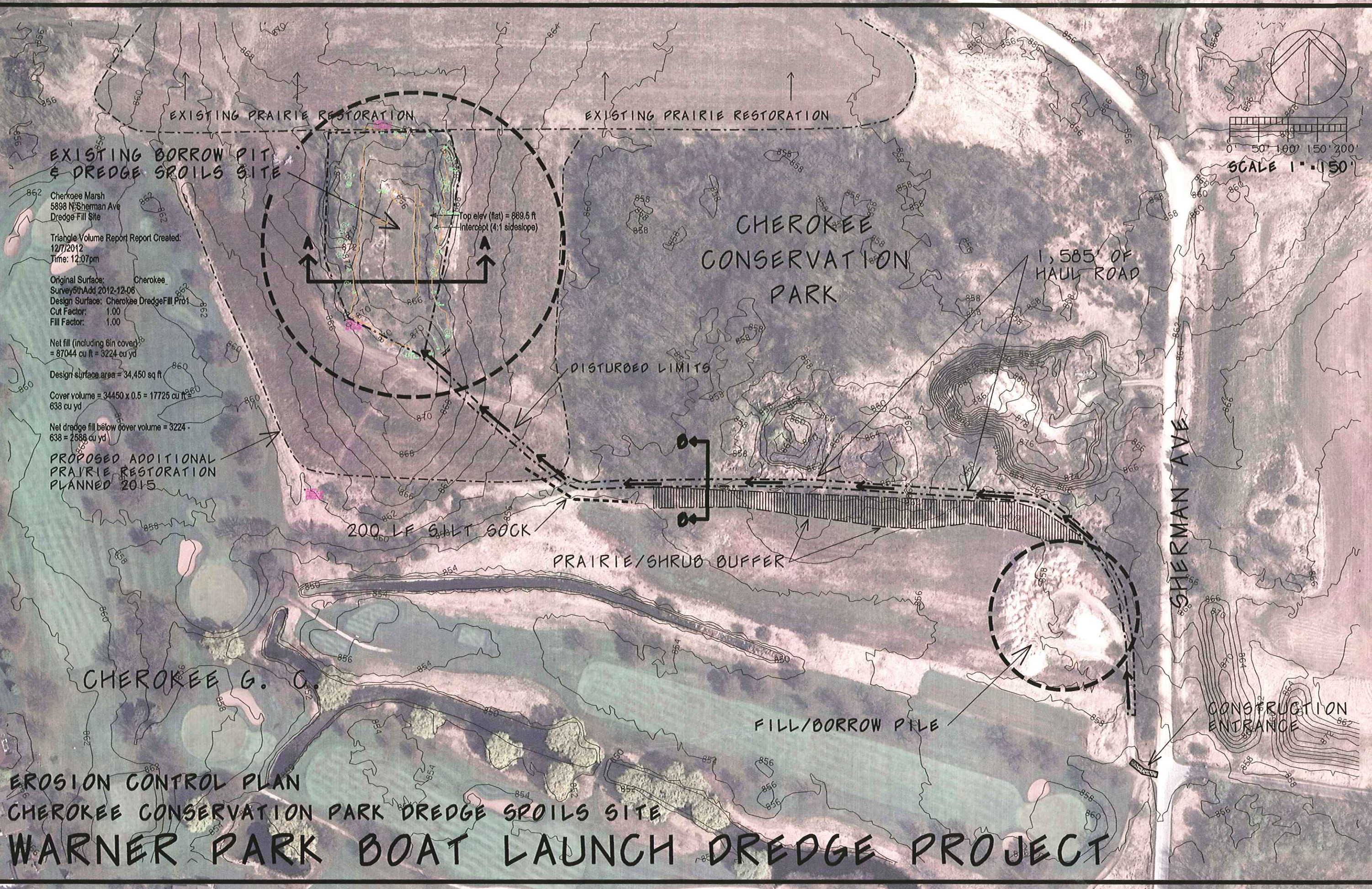
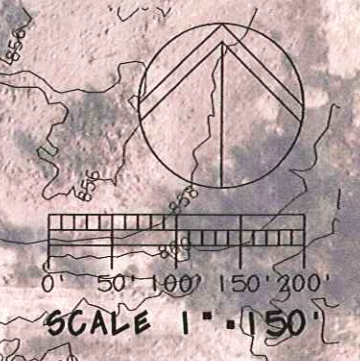
SURVEYED BY:  
Dan Rodman, Registered Land Surveyor #2793  
Parks Division, City of Madison, Wisconsin

6. Elevations are in the NGVD29 datum, computed by adding 0.20 feet to the NAVD88 datum, pre-2007 adjustment, which was determined from the same adjustment as for the horizontal coordinates, from the Emil Street base station at ellipsoid height 815.92 ft (bottom of antenna mount), 2007 NAD 83 datum. The GEOID03 geoid model was modified based on an analysis of 34 area NGS stations (Pivot N=469050 E=814396 US ft, shift -0.087 ft, tils E=+1.7 ppm & N=-0.9 ppm) to compute pre-2007 NAVD88 elevations. See [http://gis.cityofmadison.com/Madison\\_GPS/](http://gis.cityofmadison.com/Madison_GPS/) & <http://danrodman.tripod.com>

7. Elevations are in NGVD29 to match Dane County / USGS lake levels published at <http://www.countyofdane.com/landconservation/lakelevelpg.aspx>  
Target summer minimum elevation is 849.6 feet. The bottom of the concrete ramps were confirmed to be at 844.6 feet, 5 feet below the summer minimum, in accordance with the 1986 construction plans. Elevations in the old "city" datum are 845.60 feet less than NGVD29 elevations, assuming accurate bench marks are used.

Concrete Ramps:  
Dashed lines are surveyed.  
Solid lines are per 1986 construction plan, field-verified at minimum elevation and selected spots.





**EXISTING BORROW PIT & DREDGE SPOILS SITE**

Cherokee Marsh  
5898 N Sherman Ave  
Dredge-Fill Site

Triangle Volume Report Report Created:  
12/7/2012  
Time: 12:07pm

Original Surface: Cherokee  
Survey 5th Add 2012-12-06  
Design Surface: Cherokee Dredge-Fill Proj  
Cut Factor: 1.00  
Fill Factor: 1.00

Net fill (including 6in cover) =  
87044 cu ft = 3224 cu yd

Design surface area = 34,450 sq ft

Cover volume = 34450 x 0.5 = 17725 cu ft =  
638 cu yd

Net dredge fill below cover volume = 3224 -  
638 = 2586 cu yd

**PROPOSED ADDITIONAL PRAIRIE RESTORATION PLANNED 2015**

**EROSION CONTROL PLAN  
CHEROKEE CONSERVATION PARK DREDGE SPOILS SITE  
WARNER PARK BOAT LAUNCH DREDGE PROJECT**

# EXISTING BORROW PIT & DREDGE SPOILS SITE

ACP 10P22  
MAGNAD 44-1103  
N=514033.3000  
E=825822.3400  
ELEV=870.9700

ACP 10P21  
MAGNAD 44-1103  
N=514033.3000  
E=825822.3400  
ELEV=867.2800

Cherokee Marsh  
5898 N Sherman Ave  
Dredge Fill Site

Triangle Volume Report Report Created:  
12/7/2012  
Time: 12:07pm

Original Surface: Cherokee  
Survey58Apr 2012-12-06  
Design Surface: Cherokee Dredge Fill Proj  
Cut Factor: 1.00  
Fill Factor: 1.00

Net fill (including 6in cover)  
= 87044 cu ft = 3224 cu yd

Design surface area = 34,450 sq ft

Cover volume = 34450 x 0.5 = 17225 cu ft =  
638 cu yd

Net dredge fill below cover volume = 3224  
638 = 2586 cu yd

Top elev (flat) = 869.5 ft  
Intercept (4:1 sideslope)

A  
↑

A  
↑

Top elev (flat) = 869.5 ft

Intercept (4:1 sideslope)

