



Department of Public Works
City Engineering Division

Robert F. Phillips, P.E.
City Engineer

City-County Building, Room 115
210 Martin Luther King, Jr. Boulevard
Madison, Wisconsin 53703
FAX 608 264 9275
www.cityofmadison.com

608 266 4751

Assistant City Engineer
Michael R. Dailey, P.E.

Principal Engineers
Christina M. Bachmann, P.E.
John S. Fahrney, P.E.
Gregory T. Fries, P.E.
Christopher J. Petykowski, P.E.

Facilities & Sustainability
Jeanne E. Hoffman, Manager
James C. Whitney, A.I.A.

Operations Supervisor
Kathleen M. Cryan

GIS Manager
David A. Davis, R.L.S.

Financial Officer
Steven B. Danner-Rivers

Hydrogeologist
Brynn Bemis

12/27/2013

NOTICE OF ADDENDUM

**ADDENDUM NO. 1
MEADOWRIDGE BRANCH LIBRARY & MEADOWOOD
NEIGHBORHOOD CENTER REMODELING
CONTRACT NO. 7202**

Revise and amend the contract document(s) for the above project as stated in this addendum, otherwise, the original document shall remain in effect:

The City will test for asbestos and lead paint materials, and abate if required, prior to the construction start in February 2014.


The Madison Public Library will remove and recycle all steel shelving in the existing Library space prior to the construction start for Phase 2.

It is strongly recommended that contractors attend the SBE pre-bid meeting at 1:00pm, January 3, 2014, at the Larry D. Nelson Engineering Operations Facility at 1600 Emil Street, Madison WI. Questions shall be directed to Norman Davis, Affirmative Action/Department of Civil Rights (608) 266-4082.

Please acknowledge this addendum on page E1 of the contract documents and/or in Section E: Bidder's Acknowledgement on Bid Express.

Electronic version of these documents can be found on Bid Express at <https://www.bidexpress.com/>.

If you are unable to download plan revisions associated with the addendum, please contact the Engineering office at 608-266-4751 receive the material by another route.

FOP

Robert F. Phillips, City Engineer

ADDENDUM NO. 1

DECEMBER 27, 2013

To City of Madison

From Engberg Anderson, Inc.
1 North Pinckney Street
Madison, WI 53703

Re Meadowridge Branch Library &
Meadowood Neighborhood Center
Madison, Wisconsin
Engberg Anderson Project No. 132273.00

The information contained in this Addendum modifies, explains, corrects, supplements or replaces information contained in the Construction Documents.

This Addendum consists of 6 pages and seven (7) attached documents as referenced under Attachments.

ANSWERS TO QUESTIONS FROM BIDDERS

1. Question: Are the sub-contractors required to pay for the approval fees?

Answer: The building, HVAC and plumbing plans have been conditionally approved by the City of Madison. All remaining fees including but not limited to the construction permit and fire protection review to be covered by the general contractor.

2. Question: Are the bids required to be broken down by phases?

Answer: That is not a requirement.

3. Question: Item one on page D101 calls for masonry and drywall removal for future openings. There is no height shown on the structural or demolition drawings are we to assume 7'?

Answer: Refer to interior elevations, frame schedule and detail pages for opening heights in the wall that separates the library from the shared space (this is similar for the wall between the neighborhood center and shared space). SD-02 has been issued with a header detail for the typical openings in the existing cmu wall between the library and shared space - refer to plan details 3/A904, 8/A905 & 15/A905.

4. Question: The Fire Protection plans call for the use of dry upright sprinkler heads fed from the wet system below to protect this space. At this time I know of no specifically listed dry upright heads that meet this requirement. How would you like to see this space protected?

Answer: The drawings and specifications have been revised to allow for the contractor to provide a complete and operable wet system or pre action dry system in the heated area and a complete and operable pre action dry system in the non heated truss space above the insulation. Refer to the following changes in this addendum and the attached documents for complete information.

ALLOWED SUBSTITUTIONS

1. Interior Painting: specification section 099123

Manufacturer: Diamond Vogel

CHANGES TO PROJECT MANUAL - BID PACKAGE 1

SECTION TOC - TABLE OF CONTENTS

Page TOC-06; Division 26 Electrical, Section 263100 - Fire Detection and Alarm, revise:

Revise to **Division 28 - Electronic Safety and Security**, section number **283100 - Fire Detection and Alarm** the page numbers from 1 thru 9 to read, **1 thru 38**.

SECTION 012500 - PAYMENT PROCEDURES

PART 2 - PRODUCTS

Page 012500-3, section 1.2 Substitutions, item B delete and replace sentence:

- B. Substitutions for Convenience: **For Division 2 through Division 17 sections** the Architect will consider requests for substitutions if received within **30 days** after Notice of Award. Requests received after that time may be considered or rejected at the discretion of the Architect.

SECTION 012900 - PAYMENT PROCEDURES

PART 1 - GENERAL

Page 012900-1, section 1.4 Schedule of Values, replace item 2 with:

2. Within 10 days after Notice to Proceed, the successful bidder will submit a schedule of values to the Architect and the City of Madison.

SECTION 015000 - TEMPORARY FACILITIES AND CONTROLS

PART 2 - PRODUCTS

Page 015000-6, section 3.4 Security and Protection Facilities Installation, item H:

Delete Item 2

SECTION 099123- INTERIOR PAINTING

PART 1 - GENERAL

Page 099123-2, add the following section:

1.7 MAINTENANCE MATERIAL SUBMITTALS

- A. Furnish extra materials, from the same product run, that match products installed and that are packaged with protective covering for storage and identified with labels describing contents.
 - 1. Paint: 5 percent, but not less than 1 gal. of each material and color applied.

**SECTION 210500 - COMMON WORK RESULTS FOR FIRE SUPPRESSION
PART 1 - GENERAL**

Page 210500-5, section 1.7 Design Criteria, item B2; delete and replace with following:

- 1. Preaction dry pipe sprinkler systems.

**SECTION 211000 - WATER BASED FIRE-SUPPRESSION SYSTEMS
PART 1 - GENERAL**

Page 211000-1, section 1.1 Section Includes; add the following after item 11:

- 12. Specialty Valves
- 13. Preaction Control
- 14. Air Compressor

Page 211000-2, section 1.3 Submittals; add the following after item 12:

- 13. Specialty Valves
- 14. Preaction Control
- 15. Air Compressor

PART 2 - PRODUCTS

Page 211000-4, section 2.1 Fire Protection Piping, item 6; after the words "shall be used" insert the following: in dry sprinkler systems, preaction systems.

Page 211000-4, section 2.1 Fire Protection Piping, item 6; after the words "shall be used" delete the word "for".

Page 211000-5, section 2.4 Sprinklers; delete item B3 and replace with the following:

- 2. Combustible concealed space upright: Brass Finish

Page 211000-7, after section 2.11; insert the following:

- 2.12 SPECIALTY VALVES**
 - A. Manufacturer: Reliable, Tyco, Victaulic, Viking
 - B. Dry Pipe Valves

1. Cast or ductile iron body, flanged or grooved ends, 175 psig, bronze grooved seat with o-ring seal, single hitch pin and latch design. Provide trim for air supply, drain, priming level, alarm connections, pressure gages, priming chamber attachment, ball drip valves, drip cup assembly piped to floor or hub drain, fill line attachment with strainer.
 - C. Air Pressure Maintenance Device
 1. Automatic control capable of maintaining system air pressure, rated for 175 psig, adjustable air pressure range of 15 to 60 psig, complete with isolation valves, bypass fill valve, pressure regulator or pressure switch and strainer.
 - D. Preaction System
 1. Preaction system valve and all trim shall be a package system equal to Tyco Integrated Preaction Fire Protection package Model DV-5 RED-E cabinet with locking doors, dry valve, air maintenance compressor, air controls and panel.
- 2.13 PREACTION CONTROL**
- A. Single area type in NEMA 1 enclosure with detector, alarm, power supply, battery charge, standby battery, electrically supervised solenoid valves, polarized fire alarm, lamp test, wiring terminal strip, auxiliary alarm contacts.
- 2.14 AIR COMPRESSOR**
- A. Manufacturer: Gast, Quincy, Ingersoll Rand, Viking
 - B. Multi-zone and large systems: Simplex electric motor belt driven oil lubricated compressor mounted on ASME rated galvanized receiver tank, pressure operated electric switch, motor, magnetic motor starter with three phase overload protection, fused disconnect switch, safety relief valve, check valve, shutoff valve, pressure gauge, automatic tank drain, intake muffler-filter, belt guard and adjustable operating pressure control.
 - C. Single zone and small systems: Riser pipe mounted air compressor installation. Electric motor driven, air cooled, oil-less, adjustable, single stage compressor with check valve, pressure switch, pressure relief valve, mounting bracket kit and air filter assembly. Equal to Viking Model E-1.

PART 3 - EXECUTION

Page 211000-10, section 3.6 Installation of Fire Suppression System Components, after item H; insert the following:

- I. Specialty Valves: Install in vertical position in system riser. Install trim recommended by manufacturer including drain and test valves. Pipe drains to hub or floor drains. Test and adjust operation of valves, alarms, pressure maintenance devices, emergency pull boxes and deluge-preaction controls.
- J. Air Compressor: Attached to system riser or install on concrete housekeeping pad, leveled and bolted in place. Pipe automatic drain discharge piping to floor drain. Install line size ball valve and check valve in discharge line. Install pressure gauge upstream of ball valve.

CHANGES TO DRAWINGS

**SHEET D101, D102, D103
DEMOLITION PLANS**

Add to "General Notes" section and add the following: "9. All existing toilet accessories to be removed."

**SHEET D101
DEMOLITION PLAN - PHASE 1**

Add to "Demolition Keynote Ledged" section and add the following to note #4: "Height of area is approximately 12'-0" aff. field verify."

**SHEET D103
DEMOLITION PLAN - PHASE 3**

Add to "Demolition Keynote Ledged" section and add the following to note #14 & #20: "General Contractor to protect all finished surfaces constructed in previous phases. GC to patch and repair all surfaces damaged in the removal of the temporary partitions."

**SHEET A101
FLOOR PLAN - PHASE 1**

- On drawing 1/A101 a partial plan has been issued with changes to the door location that opens to the receiving room #308 that is to be constructed in phase 3 - see issued SD-01. The door location has been moved down to accommodate an added fire protection cabinet. The cabinet is to be installed in phase 1 and GC to coordinate schedule and work with tenant prior to construction.
- Add note to Keyed Notes - Phase 1: "Note #14" - see issued SD-01.

**SHEET F100
FIRST FLOOR FIRE PROTECTION NEW WORK PLAN**

1. Provide a dry valve preaction fire protection package system and cabinet in room 308.
2. Revise key notes and add key note 4.

**SHEET P100
FIRST FLOOR UNDERFLOOR PLUMBING NEW WORK PLAN**

1. Add hub drain (HD-1) in room 308.

**SHEET P110
FIRST FLOOR PLUMBING NEW WORK PLAN**

1. Add hub drain (HD-1) in room 308.
2. Add key note 3.

**SHEET P300
PLUMBING RISERS**

1. Add hub drain (HD-1) in room 308.

SHEET E110

FIRST FLOOR ELECTRICAL NEW WORK PLAN

1. Provide power to air compressor using (2) 10#, (1)#12 ground, ¾" in liquid tight flex conduit from controller to motor and ¾" EMT from panel to controller. Provide (1) 30 A/1P at 115 v, 1 Phase.
EC coordinate with Fire Protection contractor on the exact size and requirements of the air compressor.

ATTACHMENTS

Walk Thru sign up sheet

SD-01

SD-02

Drawings Full Size: FP100, P100, P110, and P300

Issued by:

Mike Zuehlke, AIA

Distribution list:

Jeanine Zwart - City of Madison

Joe Huberty - Engberg Anderson

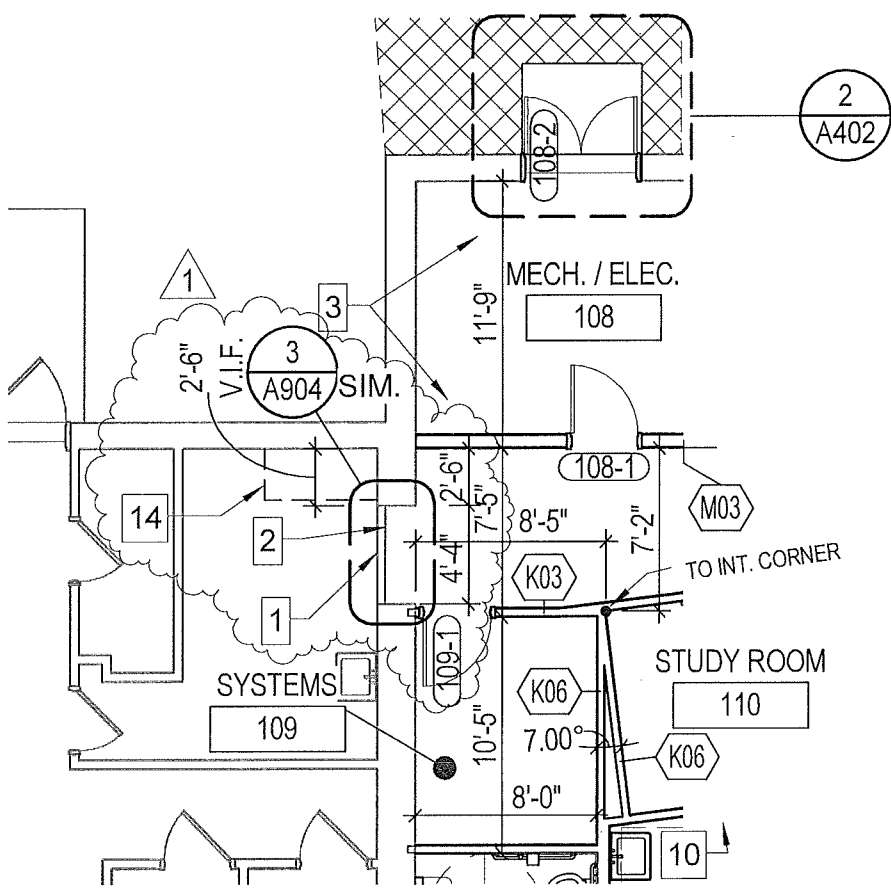
Dan Green - Henneman Engineering Inc.

File

1

14. LOCATION FOR FIRE PROTECTION CABINET TO BE INSTALLED IN PHASE 1 COORDINATE INSTALLATION WITH TENANT.

ADDITION TO KEYED NOTES - PHASE 1



1 PARTIAL PLAN - PHASE 1
SCALE: 1/8" = 1'-0"



MILWAUKEE • MADISON • TUCSON

Meadowridge Branch Library & Meadowood Neighborhood Center

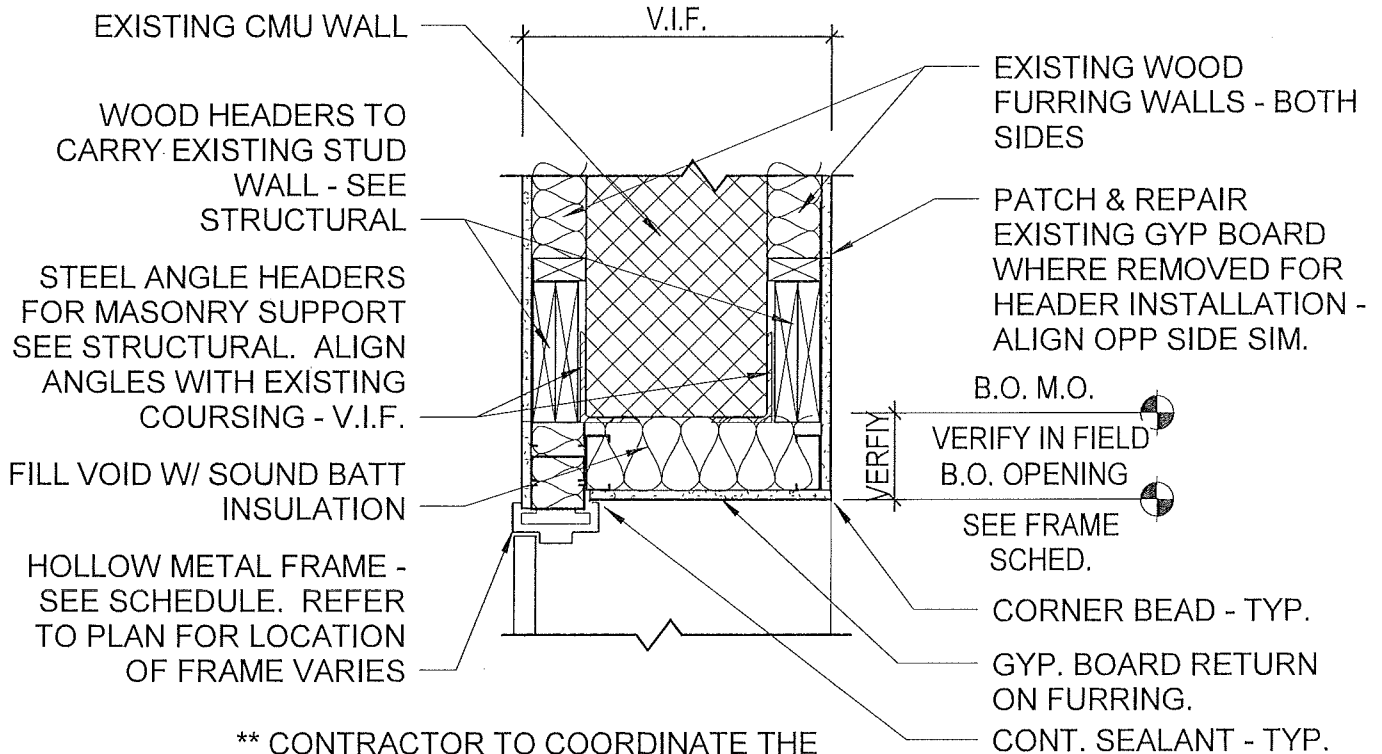
Madison, Wisconsin
Project number 132273.00

Drawn by MZ
Checked by Checker

Date 12-27-13

REVISIONS TO SHEET A101

SD-01



** CONTRACTOR TO COORDINATE THE TIMING OF THE CONSTRUCTION AND DEMOLITION TO ALIGN WITH THE PHASING OF THE PROJECT.

1

1

TYP. HEADER DETAIL @ EXISTING CMU WALL

SCALE: 1" = 1'-0"



MILWAUKEE • MADISON • TUCSON

Meadowridge Branch Library &
Meadowood Neighborhood
Center

Madison, Wisconsin
Project number 132273.00

Drawn by MZ
Checked by MZ

Date 12-27-13

TYP. HEADER DETAIL @
EXISTING CMU WALL WEST
SIDE OF LIBRARY

SD-02



MILWAUKEE • MADISON • TUCSON



Henneiman Engineering Inc.
Madison, Wisconsin
1000 Park Mall, Suite 100
Madison, WI 53705-3342
Phone: 608.261.4400
Fax: 608.261.4401
www.henneiman.com

Meadowridge Branch Library & Meadowwood Neighborhood Center
Madison, Wisconsin

Owner: City of Madison
270 Park Mall, Suite 100
Madison, WI 53705-3342
PROJECT NUMBER 132273.00

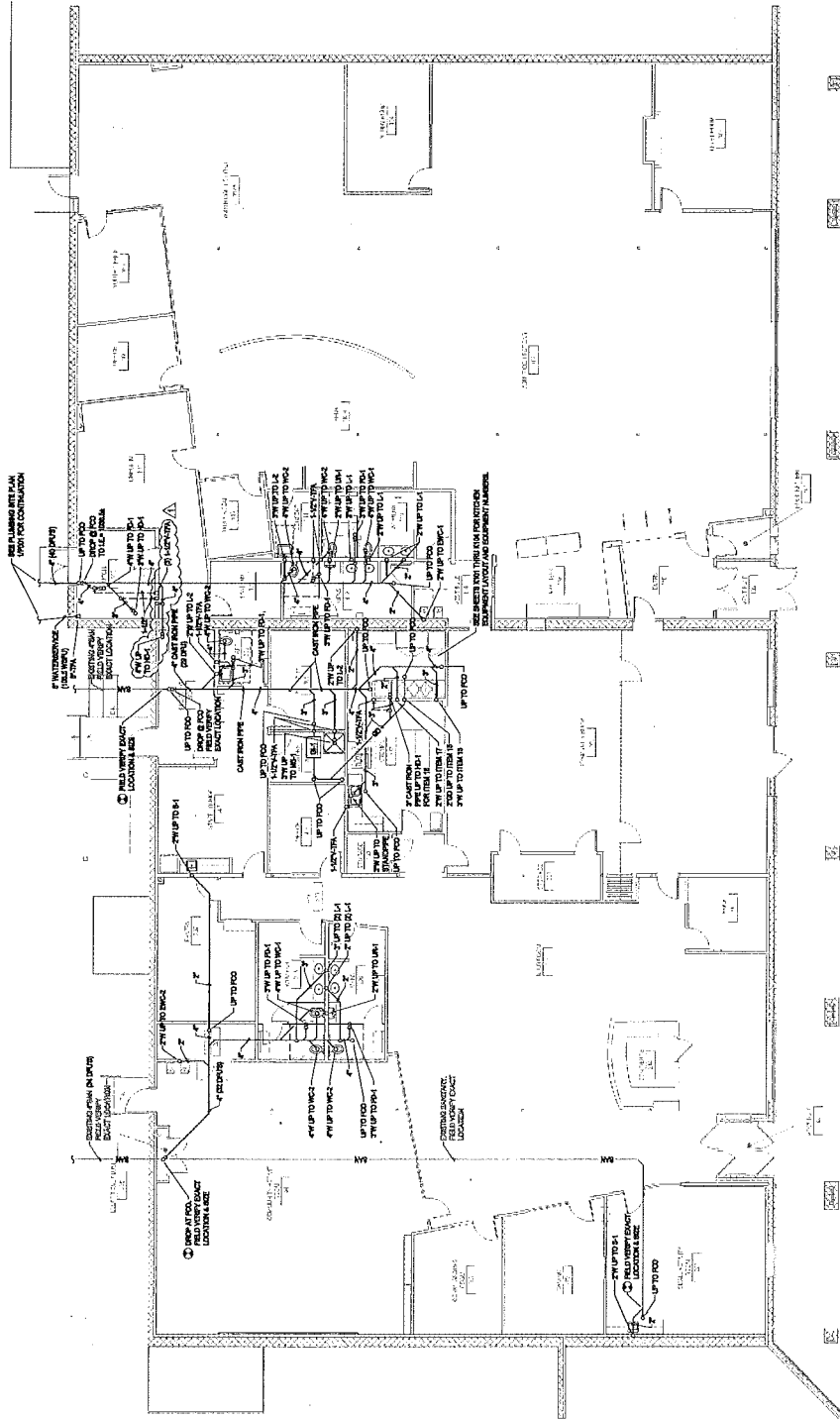
SEAL
ISSUED FOR BIDDING 10-28-13

REVISION FOR NO. DESCRIPTION DATE
ADDITION-1 12-7-13

DRAWN BY AJC
CHECKED BY DJG

FIRST FLOOR UNDERFLOOR PLUMBING NEW WORK PLAN

P100



SEE MECHANICAL DRAWING FOR PUMP LAYOUT OF THIS AREA.



1 FIRST FLOOR UNDERFLOOR PLUMBING NEW WORK PLAN
SCALE: 1/8" = 1'-0"



