

Madison, Wisconsin

# CITY OF MADISON

## CITY ENGINEERING DIVISION

## DEPARTMENT OF PUBLIC WORKS

# PLAN OF PROPOSED IMPROVEMENT

PUBLIC IMPROVEMENT PROJECT APPROVED

MARCH 29, 2016

BY THE COMMON COUNCIL OF MADISON, WISCONSIN

PUBLIC IMPROVEMENT DESIGN APPROVED BY:

*[Signature]* 6/14/16  
City Engineer Date

SANITARY SEWER DESIGNED BY:

*[Signature]*  
MARK A. BODER  
#33079  
MADISON WI  
PROFESSIONAL ENGINEER  
2/14/16

### INDEX OF SHEETS

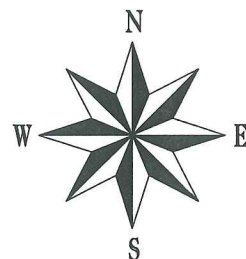
SHEET NO.	TITLE
1	UTILITY OVERVIEW PLAN
P1-P2	UTILITY PLAN AND PROFILE
UI-UII	SANITARY SEWER SCHEDULE
UI2	TRAFFIC CONTROL PLAN
TC1	

## LOWER BADGER MILL CREEK SANITARY SEWER INTERCEPTOR, PHASE 3

PROJECT NO. 53W1773

CONTRACT NO. 7292

MUNIS NO. 10843



### CONVENTIONAL SIGNS

FIELD VERIFY ALL UTILITY LOCATIONS

FIBER OPTIC — FO —

TELEPHONE — T —

GAS — G —

STORM SEWER — ST —

SANITARY SEWER — SAN —

WATER — W —

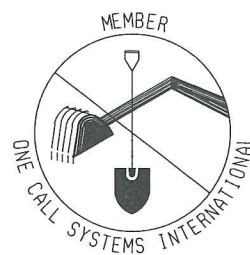
OVERHEAD ELECTRIC — OH —

POWER POLE □

ADA COMPLIANT RAMP W/  
DETECTABLE WARNING FIELD

COMBUSTIBLE FLUIDS *[CAUTION]*

### PROJECT LIMITS



TO OBTAIN LOCATION OF PARTICIPANTS' UNDERGROUND FACILITIES BEFORE YOU DIG IN WISCONSIN

CALL DIGGERS HOTLINE

811

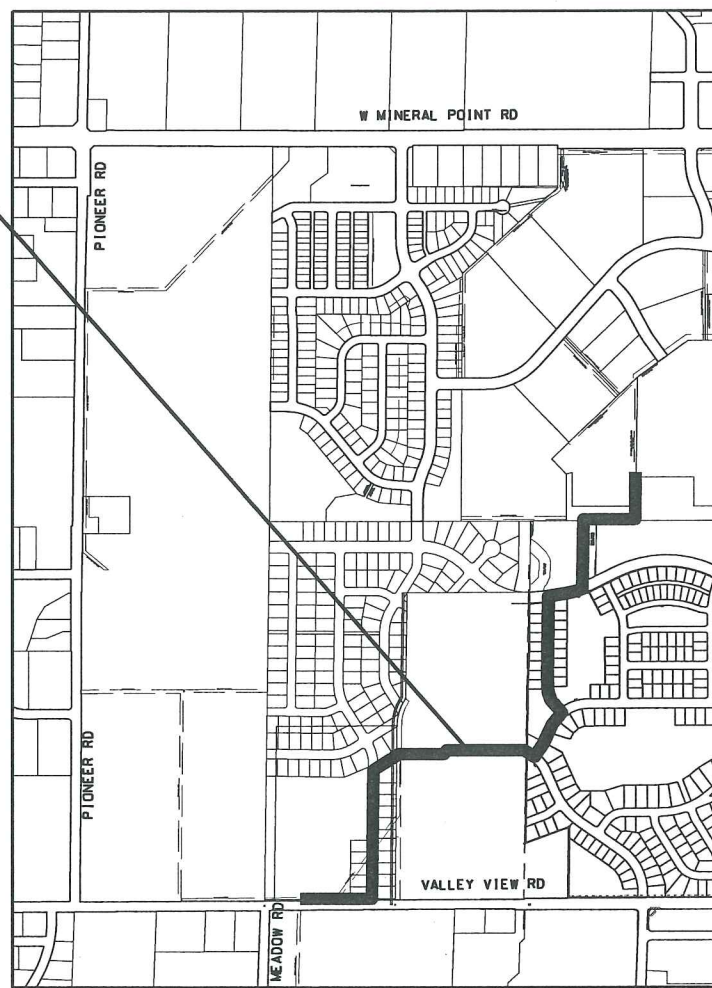
or 1-800-242-8511

TOLL FREE

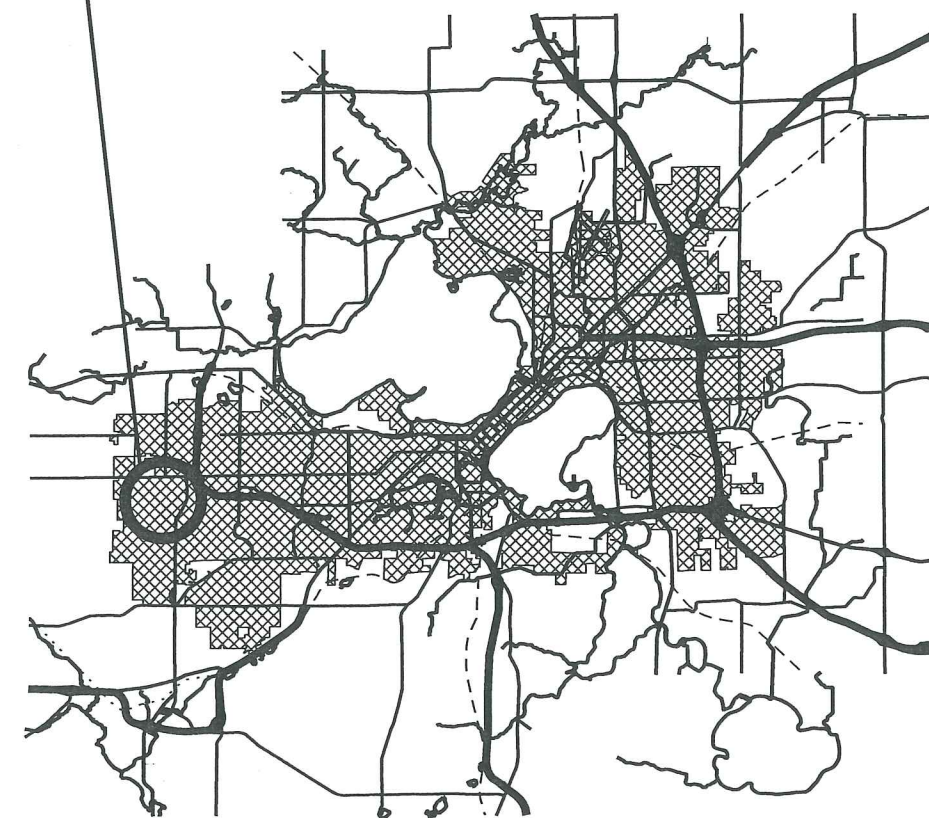
FAX-A-LOCATE 1-800-338-3860

TDD (FOR HEARING IMPAIRED) 1-800-542-2289

WIS. STATUTE 182.0175 (1974)  
REQUIRES MIN. OF 3 WORK DAY  
NOTICE BEFORE YOU EXCAVATE



### PROJECT LOCATION

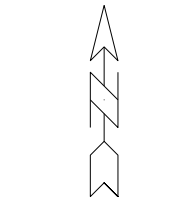


PLOT SCALE:

PLOT NAME:

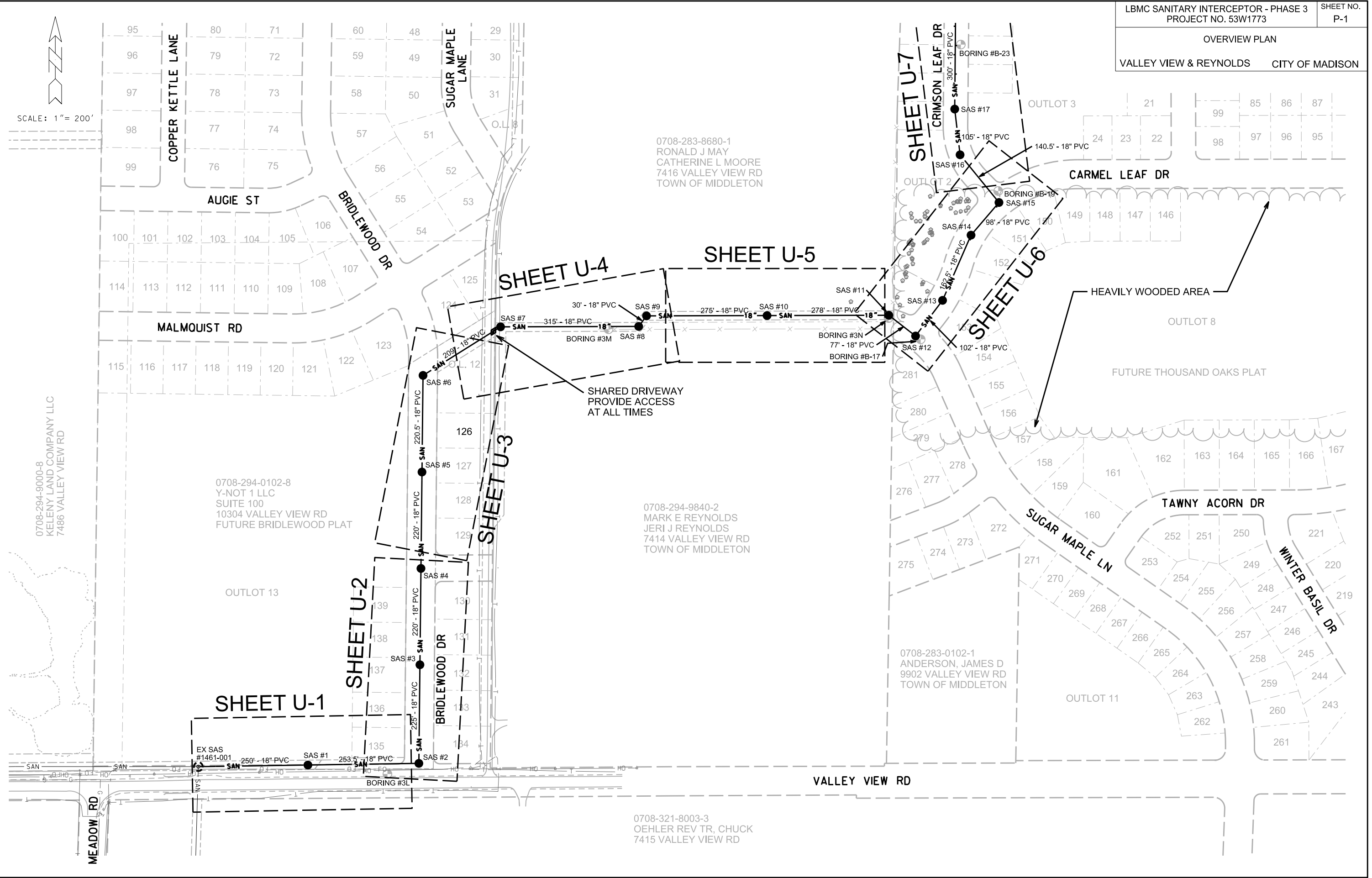
REV. DATE:

ORIGINATOR: CITY OF MADISON, STREETS DIVISION

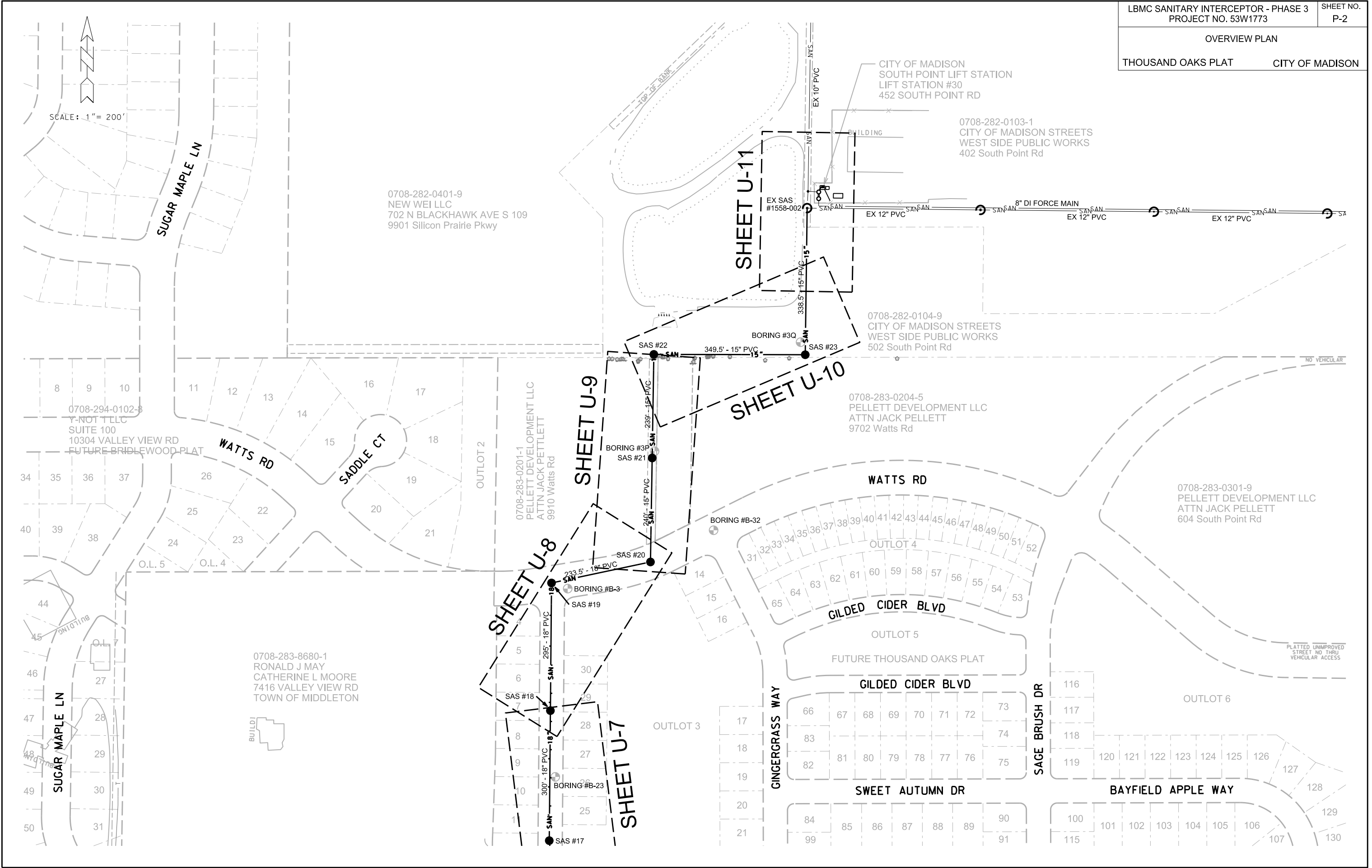


SCALE: 1" = 200'

PLOT SCALE: 1"=200'  
PLOT NAME:  
REV. DATE:  
ORIGINATOR: CITY OF MADISON, STREETS DIVISION







SCALE: 1" = 200'

PLOT SCALE: 1"=200'

PLOT NAME:

REV. DATE:

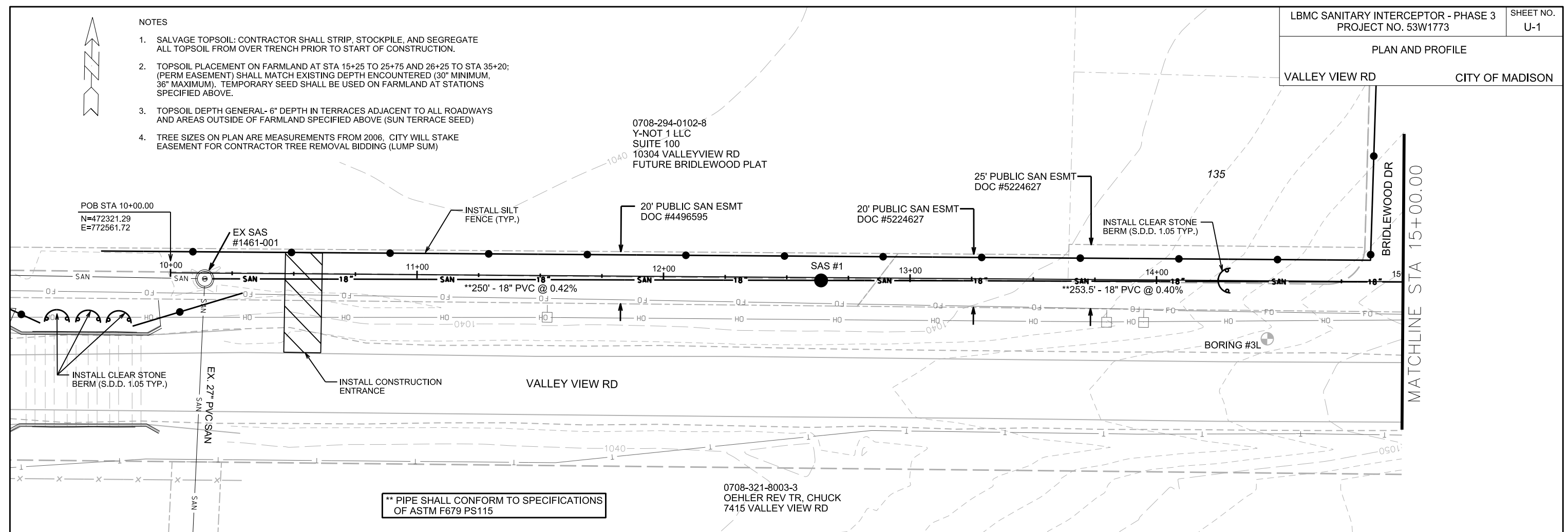
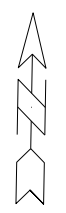
ORIGINATOR: CITY OF MADISON, STREETS DIVISION

PLAN AND PROFILE

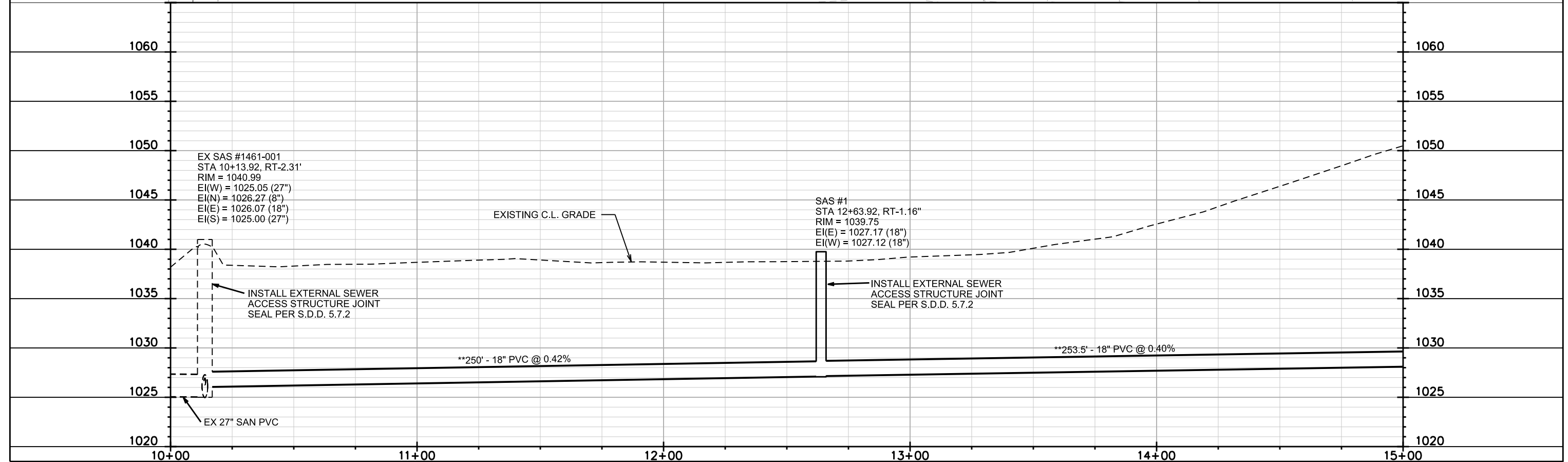
VALLEY VIEW RD CITY OF MADISON

NOTES

1. SALVAGE TOPSOIL: CONTRACTOR SHALL STRIP, STOCKPILE, AND SEGREGATE ALL TOPSOIL FROM OVER TRENCH PRIOR TO START OF CONSTRUCTION.
2. TOPSOIL PLACEMENT ON FARMLAND AT STA 15+25 TO 25+75 AND 26+25 TO STA 35+20; (PERM EASEMENT) SHALL MATCH EXISTING DEPTH ENCOUNTERED (30" MINIMUM, 36" MAXIMUM). TEMPORARY SEED SHALL BE USED ON FARMLAND AT STATIONS SPECIFIED ABOVE.
3. TOPSOIL DEPTH GENERAL- 6" DEPTH IN TERRACES ADJACENT TO ALL ROADWAYS AND AREAS OUTSIDE OF FARMLAND SPECIFIED ABOVE (SUN TERRACE SEED)
4. TREE SIZES ON PLAN ARE MEASUREMENTS FROM 2006. CITY WILL STAKE EASEMENT FOR CONTRACTOR TREE REMOVAL BIDDING (LUMP SUM)



**\*\* PIPE SHALL CONFORM TO SPECIFICATIONS OF ASTM F679 PS115**



PLOT SCALE: 1"=40'

PLOT NAME:

REV. DATE:

ORIGINATOR: CITY OF MADISON, STREETS DIVISION

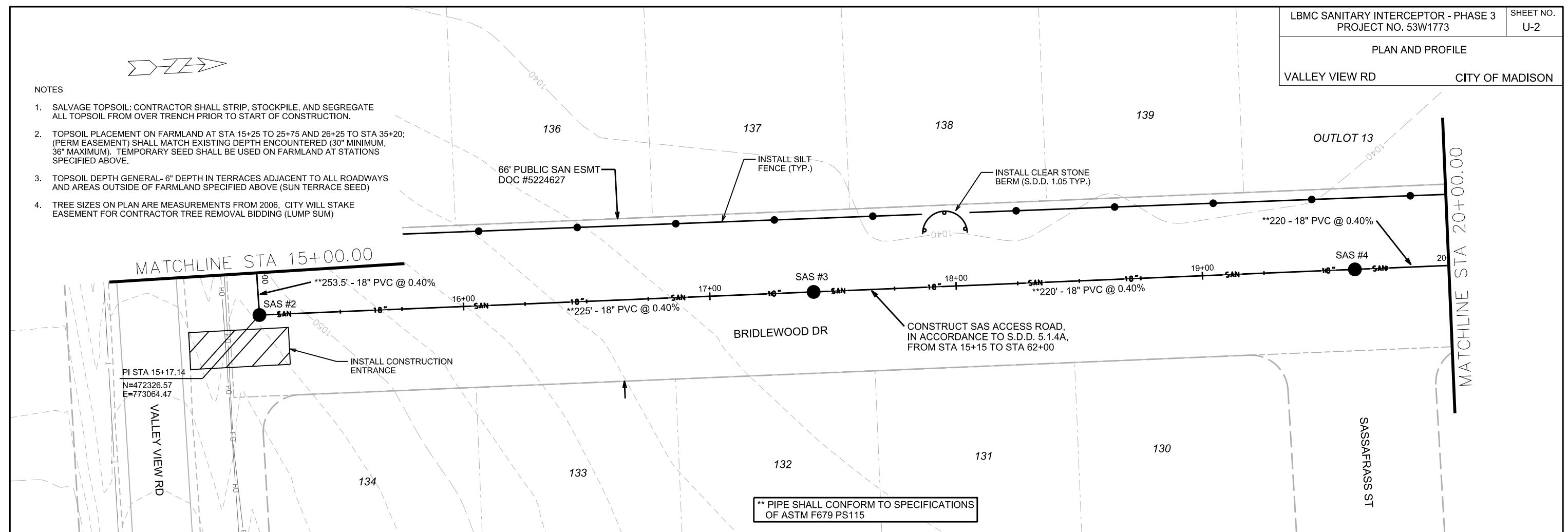
- NOTES
1. SALVAGE TOPSOIL: CONTRACTOR SHALL STRIP, STOCKPILE, AND SEGREGATE ALL TOPSOIL FROM OVER TRENCH PRIOR TO START OF CONSTRUCTION.
  2. TOPSOIL PLACEMENT ON FARMLAND AT STA 15+25 TO 25+75 AND 26+25 TO STA 35+20; (PERM EASEMENT) SHALL MATCH EXISTING DEPTH ENCOUNTERED (30" MINIMUM, 36" MAXIMUM). TEMPORARY SEED SHALL BE USED ON FARMLAND AT STATIONS SPECIFIED ABOVE.
  3. TOPSOIL DEPTH GENERAL- 6" DEPTH IN TERRACES ADJACENT TO ALL ROADWAYS AND AREAS OUTSIDE OF FARMLAND SPECIFIED ABOVE (SUN TERRACE SEED)
  4. TREE SIZES ON PLAN ARE MEASUREMENTS FROM 2006. CITY WILL STAKE EASEMENT FOR CONTRACTOR TREE REMOVAL BIDDING (LUMP SUM)

PLOT SCALE: 1"=40'

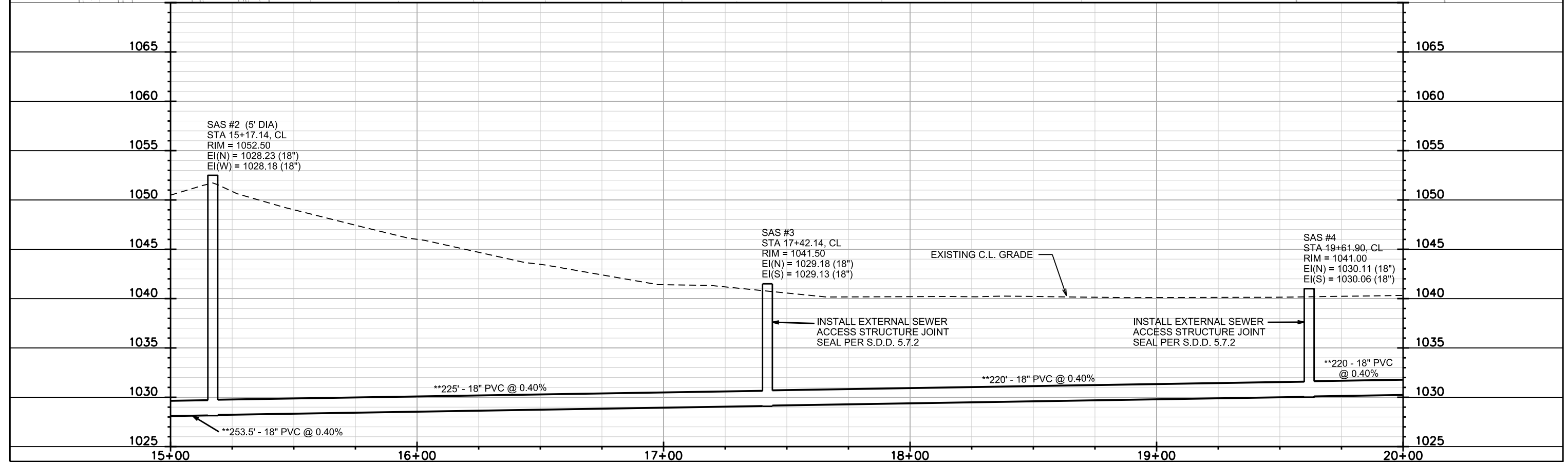
PLOT NAME:

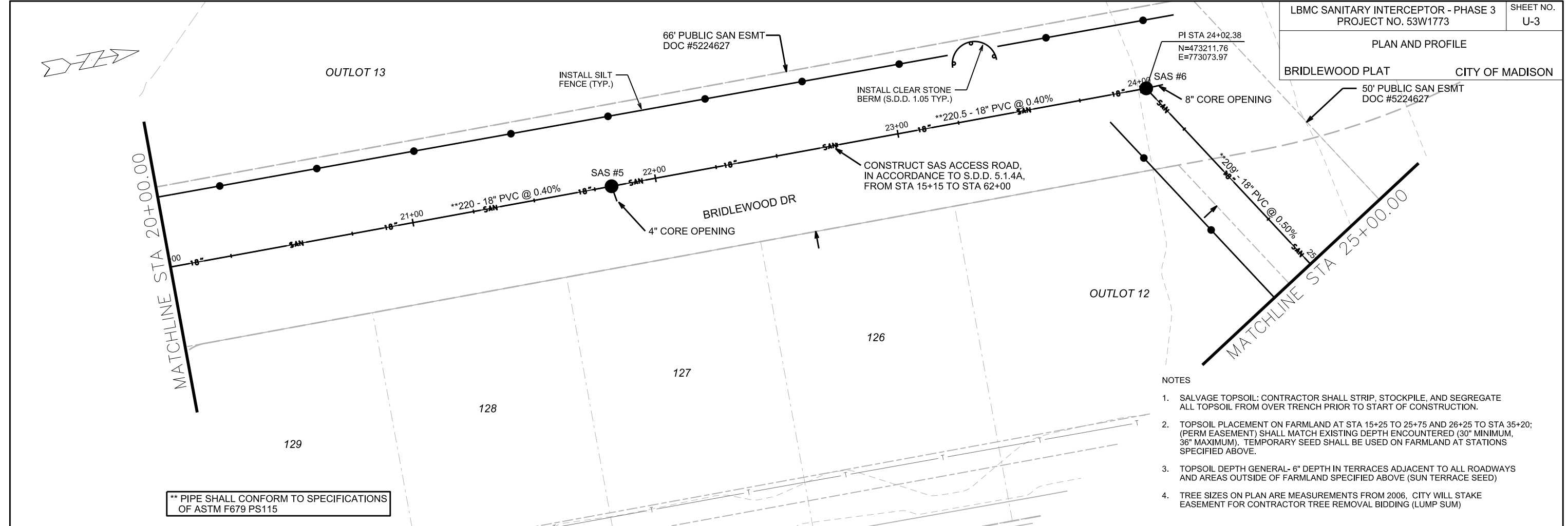
REV. DATE:

ORIGINATOR: CITY OF MADISON, STREETS DIVISION



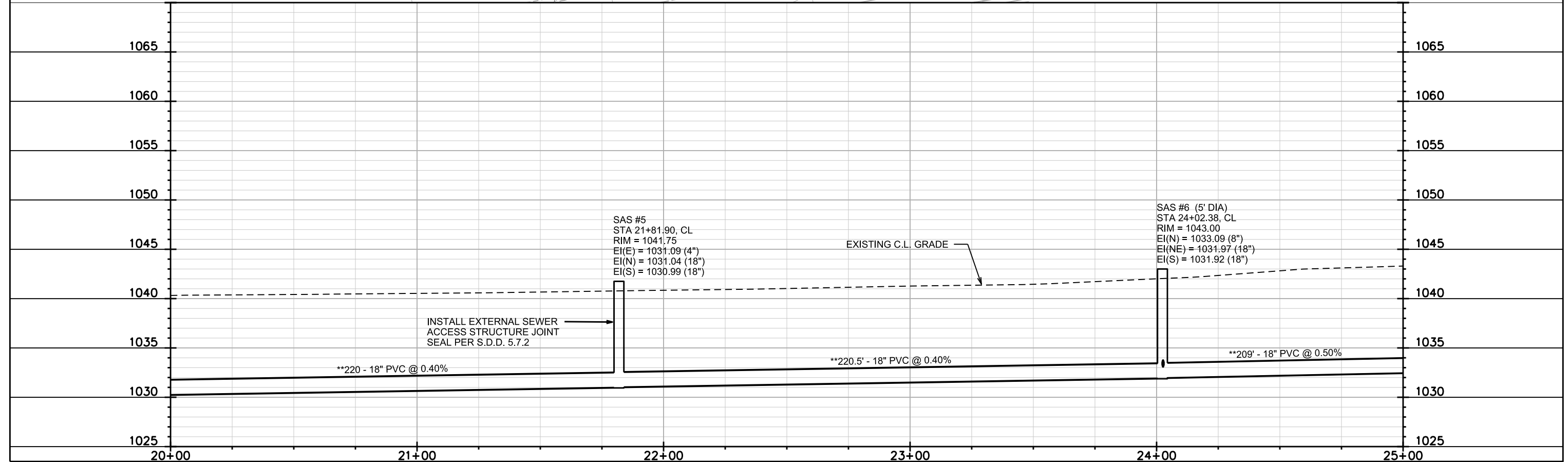
\*\* PIPE SHALL CONFORM TO SPECIFICATIONS OF ASTM F679 PS115





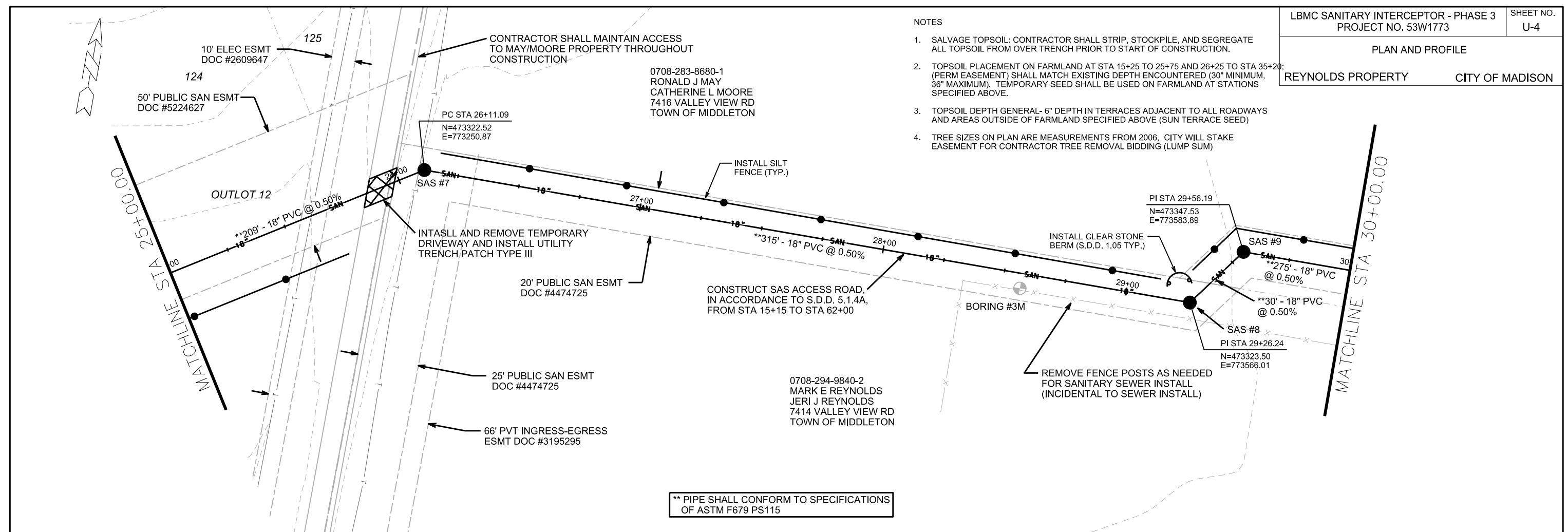
\*\* PIPE SHALL CONFORM TO SPECIFICATIONS OF ASTM F679 PS115

- NOTES
1. SALVAGE TOPSOIL: CONTRACTOR SHALL STRIP, STOCKPILE, AND SEGREGATE ALL TOPSOIL FROM OVER TRENCH PRIOR TO START OF CONSTRUCTION.
  2. TOPSOIL PLACEMENT ON FARMLAND AT STA 15+25 TO 25+75 AND 26+25 TO STA 35+20; (PERM EASEMENT) SHALL MATCH EXISTING DEPTH ENCOUNTERED (30" MINIMUM, 36" MAXIMUM). TEMPORARY SEED SHALL BE USED ON FARMLAND AT STATIONS SPECIFIED ABOVE.
  3. TOPSOIL DEPTH GENERAL - 6" DEPTH IN TERRACES ADJACENT TO ALL ROADWAYS AND AREAS OUTSIDE OF FARMLAND SPECIFIED ABOVE (SUN TERRACE SEED)
  4. TREE SIZES ON PLAN ARE MEASUREMENTS FROM 2006. CITY WILL STAKE EASEMENT FOR CONTRACTOR TREE REMOVAL BIDDING (LUMP SUM)



PLOT SCALE: 1"=40'  
PLOT NAME:  
REV. DATE:  
ORIGINATOR: CITY OF MADISON, STREETS DIVISION

- NOTES
1. SALVAGE TOPSOIL: CONTRACTOR SHALL STRIP, STOCKPILE, AND SEGREGATE ALL TOPSOIL FROM OVER TRENCH PRIOR TO START OF CONSTRUCTION.
  2. TOPSOIL PLACEMENT ON FARMLAND AT STA 15+25 TO 25+75 AND 26+25 TO STA 35+20; (PERM EASEMENT) SHALL MATCH EXISTING DEPTH ENCOUNTERED (30" MINIMUM, 36" MAXIMUM). TEMPORARY SEED SHALL BE USED ON FARMLAND AT STATIONS SPECIFIED ABOVE.
  3. TOPSOIL DEPTH GENERAL- 6" DEPTH IN TERRACES ADJACENT TO ALL ROADWAYS AND AREAS OUTSIDE OF FARMLAND SPECIFIED ABOVE (SUN TERRACE SEED)
  4. TREE SIZES ON PLAN ARE MEASUREMENTS FROM 2006. CITY WILL STAKE EASEMENT FOR CONTRACTOR TREE REMOVAL BIDDING (LUMP SUM)

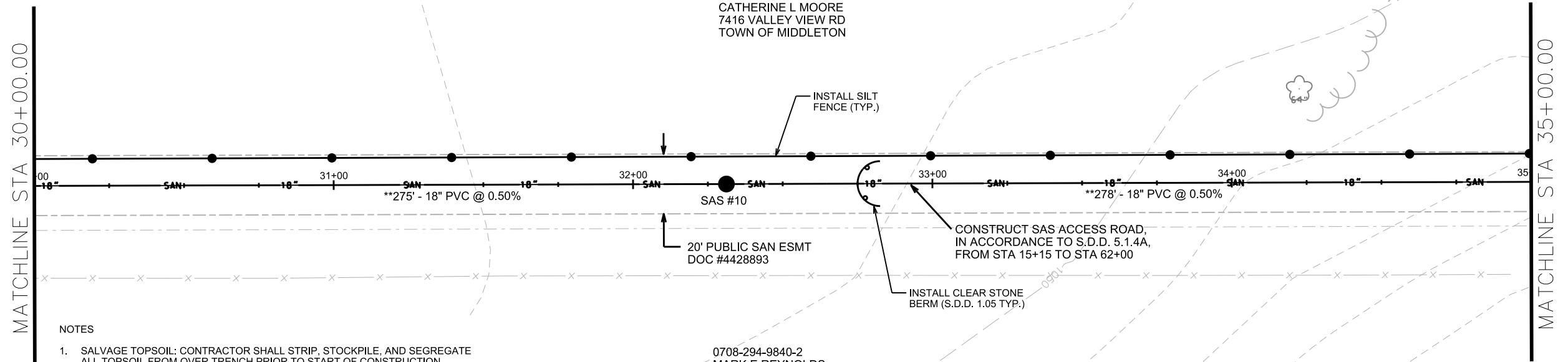
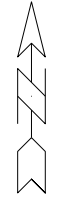


PLOT SCALE: 1"=40'

PLOT NAME:

REV. DATE:

ORIGINATOR: CITY OF MADISON, STREETS DIVISION



NOTES

1. SALVAGE TOPSOIL: CONTRACTOR SHALL STRIP, STOCKPILE, AND SEGREGATE ALL TOPSOIL FROM OVER TRENCH PRIOR TO START OF CONSTRUCTION.
2. TOPSOIL PLACEMENT ON FARMLAND AT STA 15+25 TO 25+75 AND 26+25 TO STA 35+20; (PERM EASEMENT) SHALL MATCH EXISTING DEPTH ENCOUNTERED (30" MINIMUM, 36" MAXIMUM). TEMPORARY SEED SHALL BE USED ON FARMLAND AT STATIONS SPECIFIED ABOVE.
3. TOPSOIL DEPTH GENERAL- 6" DEPTH IN TERRACES ADJACENT TO ALL ROADWAYS AND AREAS OUTSIDE OF FARMLAND SPECIFIED ABOVE (SUN TERRACE SEED)
4. TREE SIZES ON PLAN ARE MEASUREMENTS FROM 2006. CITY WILL STAKE EASEMENT FOR CONTRACTOR TREE REMOVAL BIDDING (LUMP SUM)

**\*\* PIPE SHALL CONFORM TO SPECIFICATIONS OF ASTM F679 PS115**



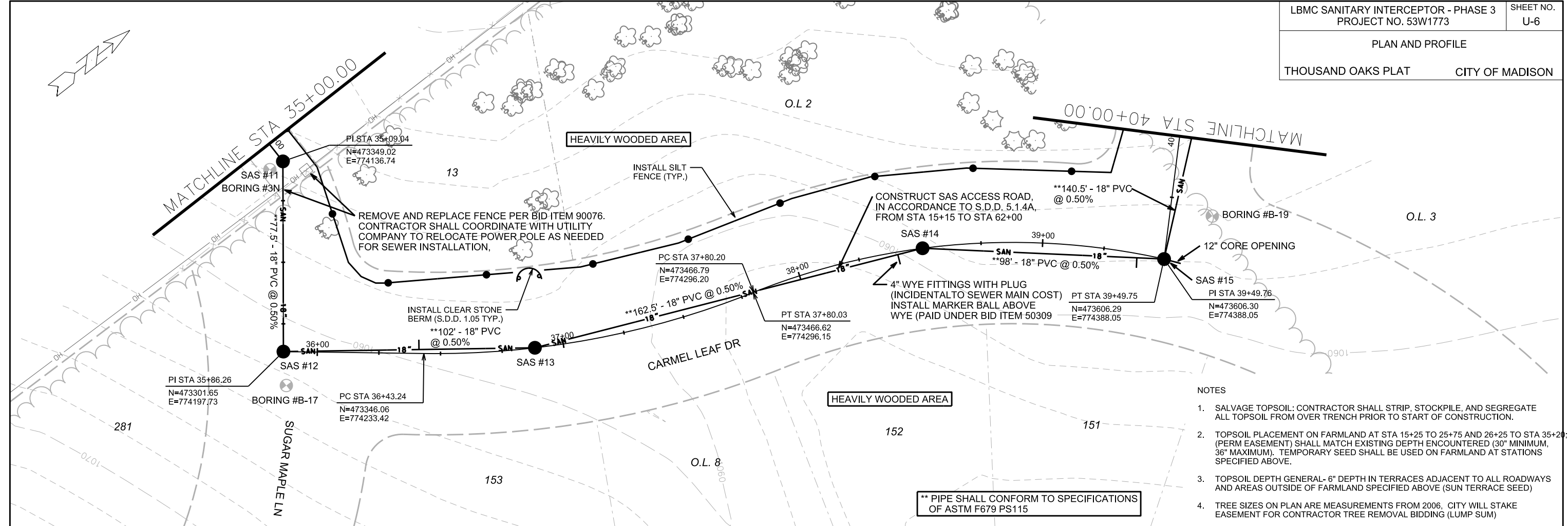
PLOT SCALE: 1"=40'

PLOT NAME:

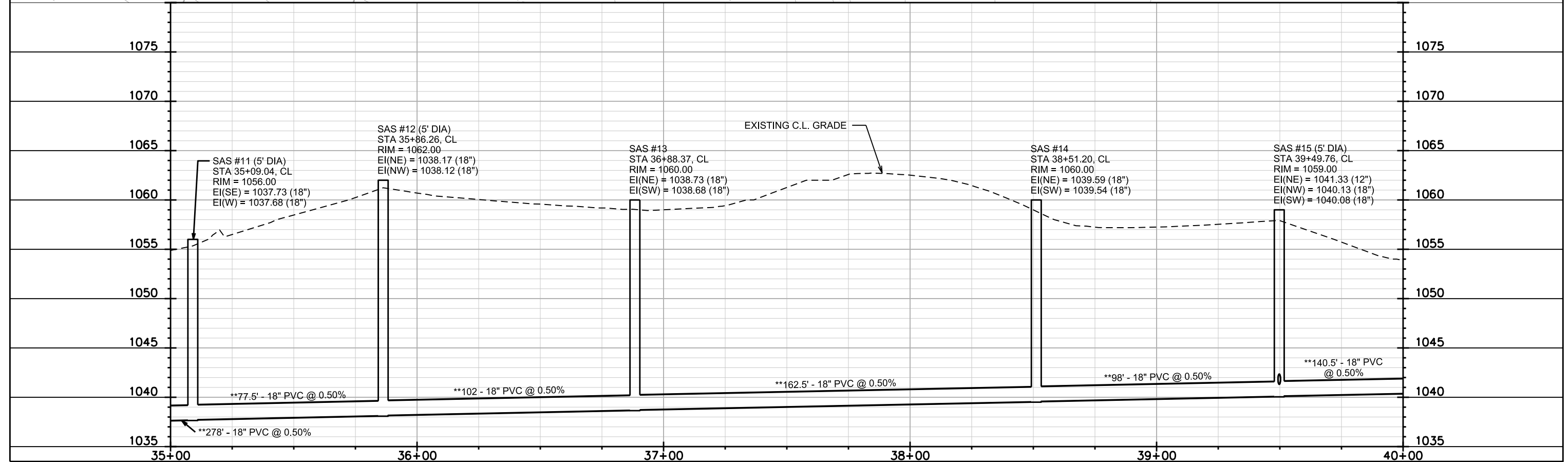
REV. DATE:

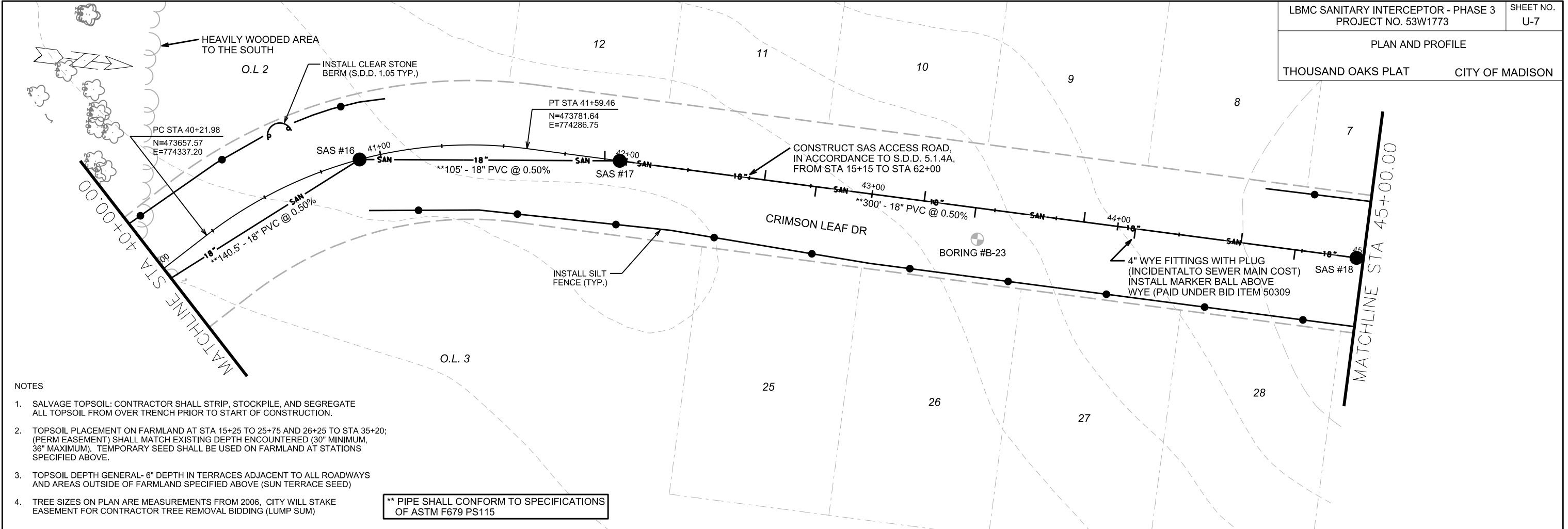
ORIGINATOR: CITY OF MADISON, STREETS DIVISION





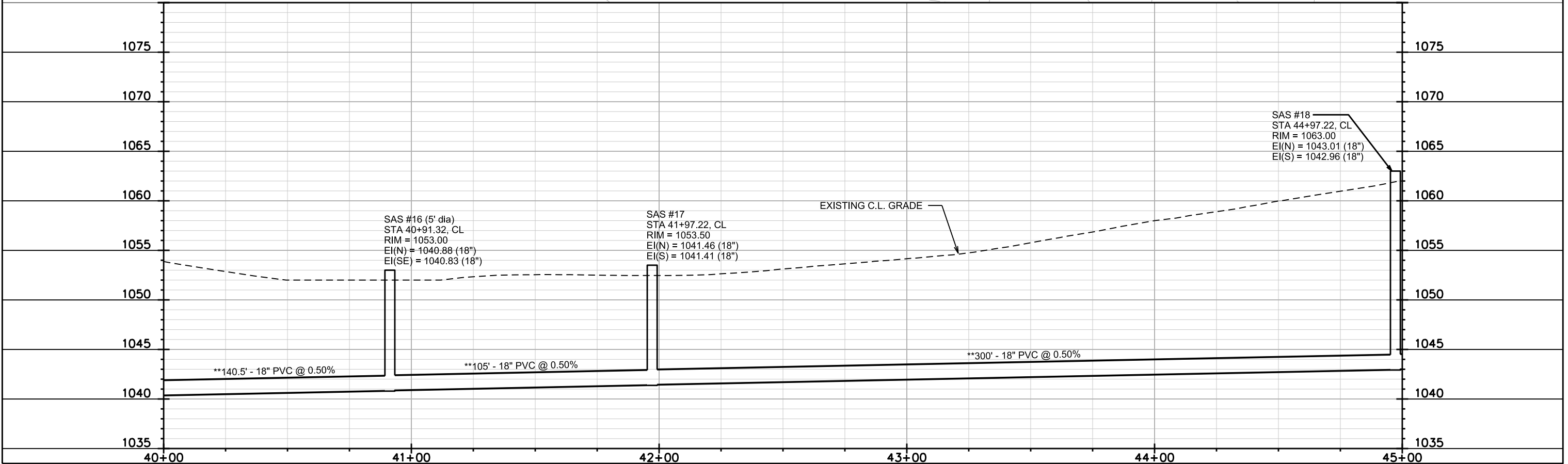
- NOTES
1. SALVAGE TOPSOIL: CONTRACTOR SHALL STRIP, STOCKPILE, AND SEGREGATE ALL TOPSOIL FROM OVER TRENCH PRIOR TO START OF CONSTRUCTION.
  2. TOPSOIL PLACEMENT ON FARMLAND AT STA 15+25 TO 25+75 AND 26+25 TO STA 35+20 (PERM EASEMENT) SHALL MATCH EXISTING DEPTH ENCOUNTERED (30" MINIMUM, 36" MAXIMUM). TEMPORARY SEED SHALL BE USED ON FARMLAND AT STATIONS SPECIFIED ABOVE.
  3. TOPSOIL DEPTH GENERAL- 6" DEPTH IN TERRACES ADJACENT TO ALL ROADWAYS AND AREAS OUTSIDE OF FARMLAND SPECIFIED ABOVE (SUN TERRACE SEED)
  4. TREE SIZES ON PLAN ARE MEASUREMENTS FROM 2006. CITY WILL STAKE EASEMENT FOR CONTRACTOR TREE REMOVAL BIDDING (LUMP SUM)





- NOTES
- SALVAGE TOPSOIL: CONTRACTOR SHALL STRIP, STOCKPILE, AND SEGREGATE ALL TOPSOIL FROM OVER TRENCH PRIOR TO START OF CONSTRUCTION.
  - TOPSOIL PLACEMENT ON FARMLAND AT STA 15+25 TO 25+75 AND 26+25 TO STA 35+20; (PERM EASEMENT) SHALL MATCH EXISTING DEPTH ENCOUNTERED (30" MINIMUM, 36" MAXIMUM). TEMPORARY SEED SHALL BE USED ON FARMLAND AT STATIONS SPECIFIED ABOVE.
  - TOPSOIL DEPTH GENERAL- 6" DEPTH IN TERRACES ADJACENT TO ALL ROADWAYS AND AREAS OUTSIDE OF FARMLAND SPECIFIED ABOVE (SUN TERRACE SEED)
  - TREE SIZES ON PLAN ARE MEASUREMENTS FROM 2006. CITY WILL STAKE EASEMENT FOR CONTRACTOR TREE REMOVAL BIDDING (LUMP SUM)

\*\* PIPE SHALL CONFORM TO SPECIFICATIONS OF ASTM F679 PS115



PLOT SCALE: 1"=40'

PLOT NAME:

REV. DATE:

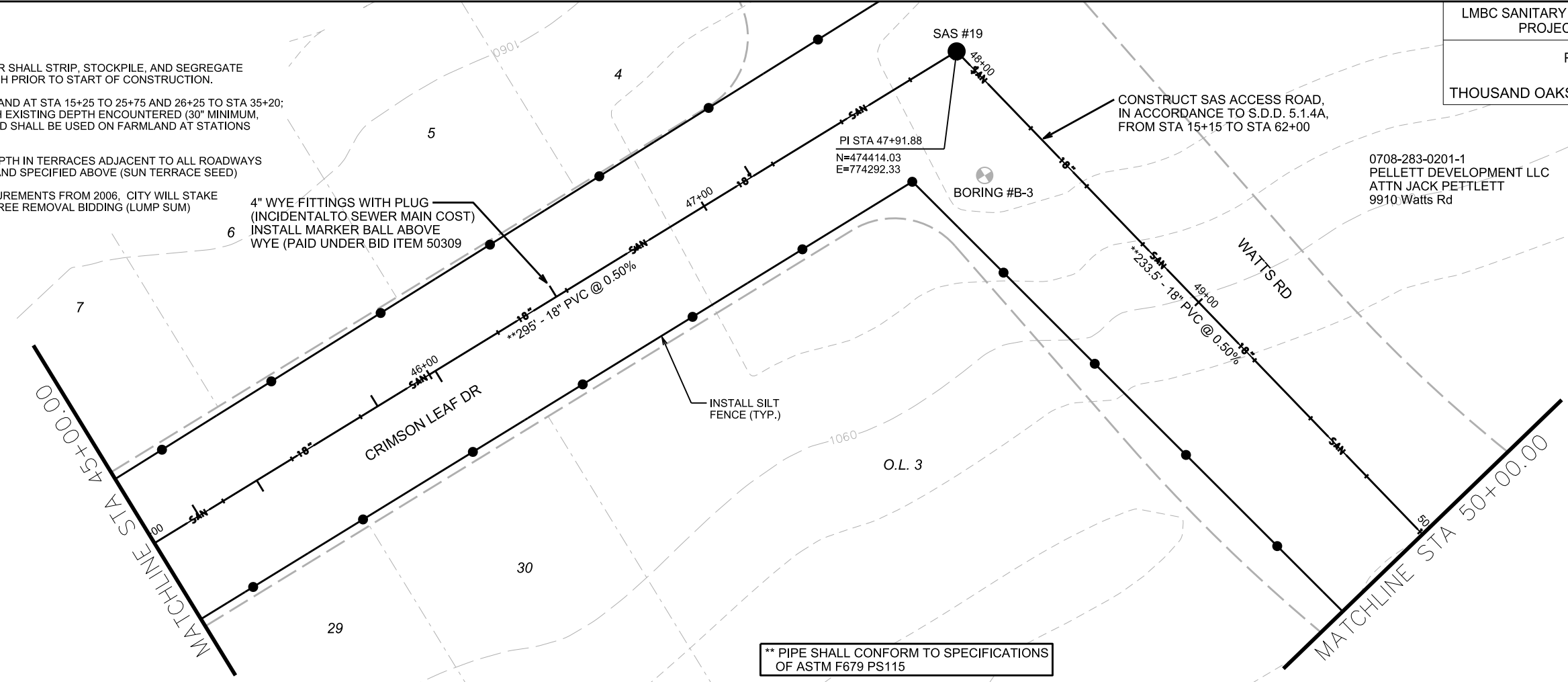
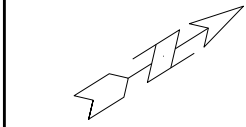
ORIGINATOR: CITY OF MADISON, STREETS DIVISION

0708-283-0201-1  
PELLETT DEVELOPMENT LLC  
ATTN JACK PETTLETT  
9910 Watts Rd

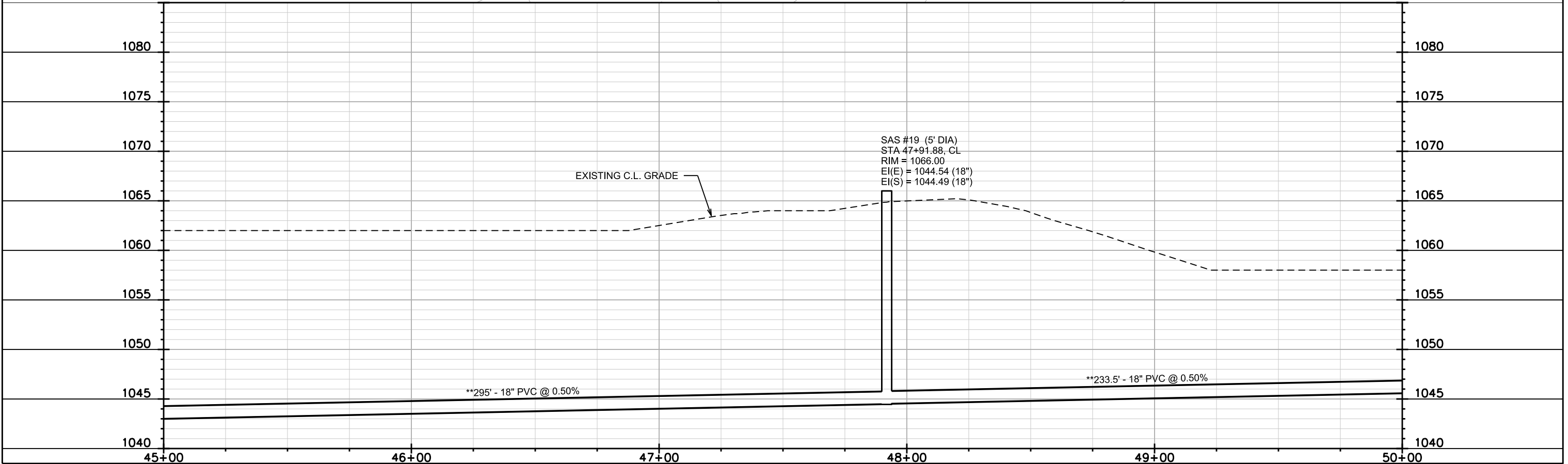
- NOTES
1. SALVAGE TOPSOIL: CONTRACTOR SHALL STRIP, STOCKPILE, AND SEGREGATE ALL TOPSOIL FROM OVER TRENCH PRIOR TO START OF CONSTRUCTION.
  2. TOPSOIL PLACEMENT ON FARMLAND AT STA 15+25 TO 25+75 AND 26+25 TO STA 35+20; (PERM EASEMENT) SHALL MATCH EXISTING DEPTH ENCOUNTERED (30" MINIMUM, 36" MAXIMUM). TEMPORARY SEED SHALL BE USED ON FARMLAND AT STATIONS SPECIFIED ABOVE.
  3. TOPSOIL DEPTH GENERAL- 6" DEPTH IN TERRACES ADJACENT TO ALL ROADWAYS AND AREAS OUTSIDE OF FARMLAND SPECIFIED ABOVE (SUN TERRACE SEED)
  4. TREE SIZES ON PLAN ARE MEASUREMENTS FROM 2006. CITY WILL STAKE EASEMENT FOR CONTRACTOR TREE REMOVAL BIDDING (LUMP SUM)

4" WYE FITTINGS WITH PLUG  
(INCIDENTAL TO SEWER MAIN COST)  
INSTALL MARKER BALL ABOVE  
WYE (PAID UNDER BID ITEM 50309)

CONSTRUCT SAS ACCESS ROAD,  
IN ACCORDANCE TO S.D.D. 5.1.4A,  
FROM STA 15+15 TO STA 62+00



\*\* PIPE SHALL CONFORM TO SPECIFICATIONS  
OF ASTM F679 PS115



SAS #19 (5' DIA)  
STA 47+91.88, CL  
RIM = 1066.00  
EI(E) = 1044.54 (18")  
EI(S) = 1044.49 (18")

PLOT SCALE: 1"=40'

PLOT NAME:

REV. DATE:

ORIGINATOR: CITY OF MADISON, STREETS DIVISION

PLAN AND PROFILE

WATTS RD CITY OF MADISON

NOTES

1. SALVAGE TOPSOIL: CONTRACTOR SHALL STRIP, STOCKPILE, AND SEGREGATE ALL TOPSOIL FROM OVER TRENCH PRIOR TO START OF CONSTRUCTION.
2. TOPSOIL PLACEMENT ON FARMLAND AT STA 15+25 TO 25+75 AND 26+25 TO STA 35+20; (PERM EASEMENT) SHALL MATCH EXISTING DEPTH ENCOUNTERED (30" MINIMUM, 36" MAXIMUM). TEMPORARY SEED SHALL BE USED ON FARMLAND AT STATIONS SPECIFIED ABOVE.
3. TOPSOIL DEPTH GENERAL- 6" DEPTH IN TERRACES ADJACENT TO ALL ROADWAYS AND AREAS OUTSIDE OF FARMLAND SPECIFIED ABOVE (SUN TERRACE SEED)
4. TREE SIZES ON PLAN ARE MEASUREMENTS FROM 2006, CITY WILL STAKE EASEMENT FOR CONTRACTOR TREE REMOVAL BIDDING (LUMP SUM)

0708-283-0201-1  
PELLETT DEVELOPMENT LLC  
ATTN JACK PETTLETT  
9910 Watts Rd

80' STORMWATER MANAGEMENT ESMT CSM 11750  
DEDICATED TO SANITARY, LOCAL PATHS,  
TRAILS, AND CROSSINGS

INSTALL CLEAR STONE  
BERM (S.D.D. 1.05 TYP.)

CONSTRUCT SAS ACCESS ROAD,  
IN ACCORDANCE TO S.D.D. 5.1.4A,  
FROM STA 15+15 TO STA 62+00

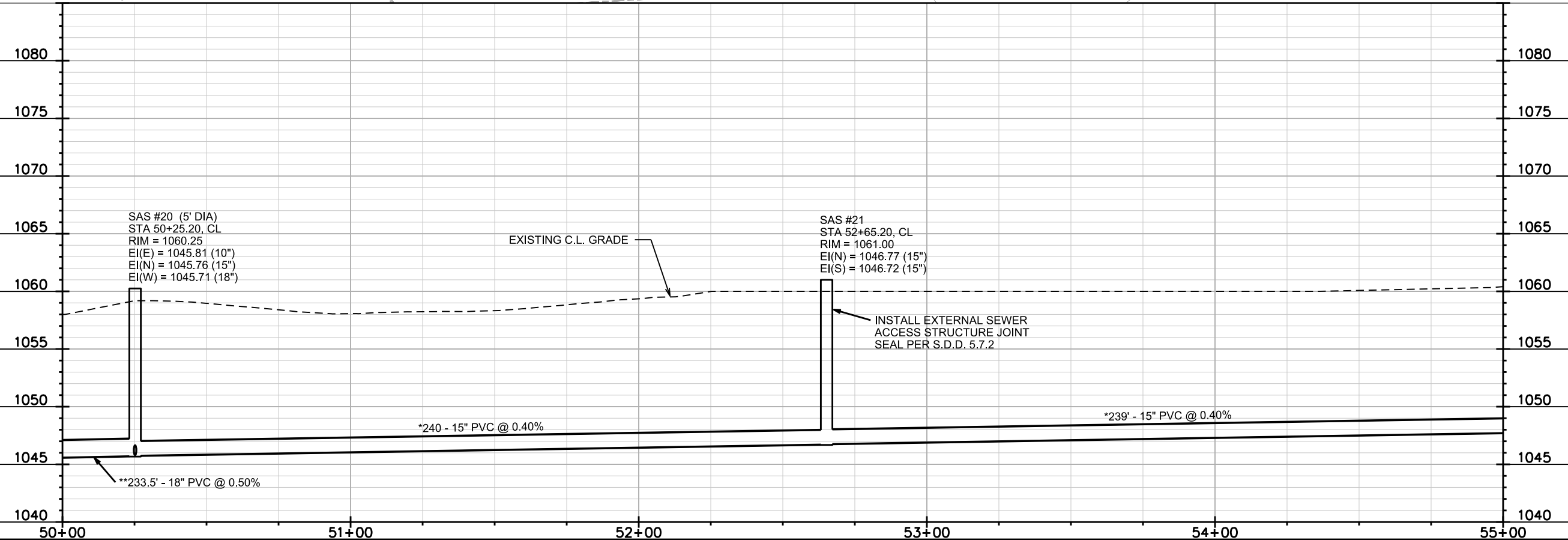
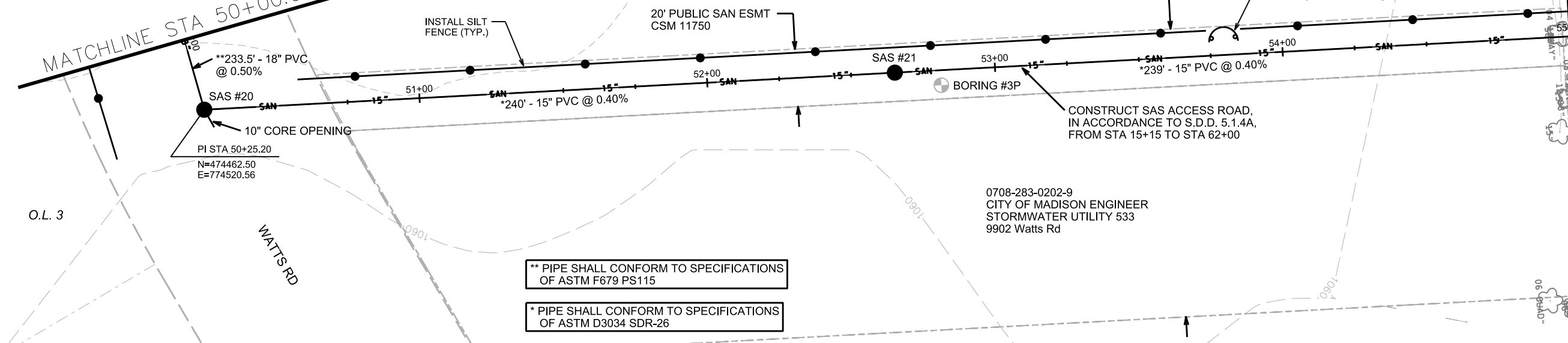
0708-283-0202-9  
CITY OF MADISON ENGINEER  
STORMWATER UTILITY 533  
9902 Watts Rd

\*\* PIPE SHALL CONFORM TO SPECIFICATIONS  
OF ASTM F679 PS115

\* PIPE SHALL CONFORM TO SPECIFICATIONS  
OF ASTM D3034 SDR-26

MATCHLINE STA 50+00.00

MATCHLINE STA 55+00.00

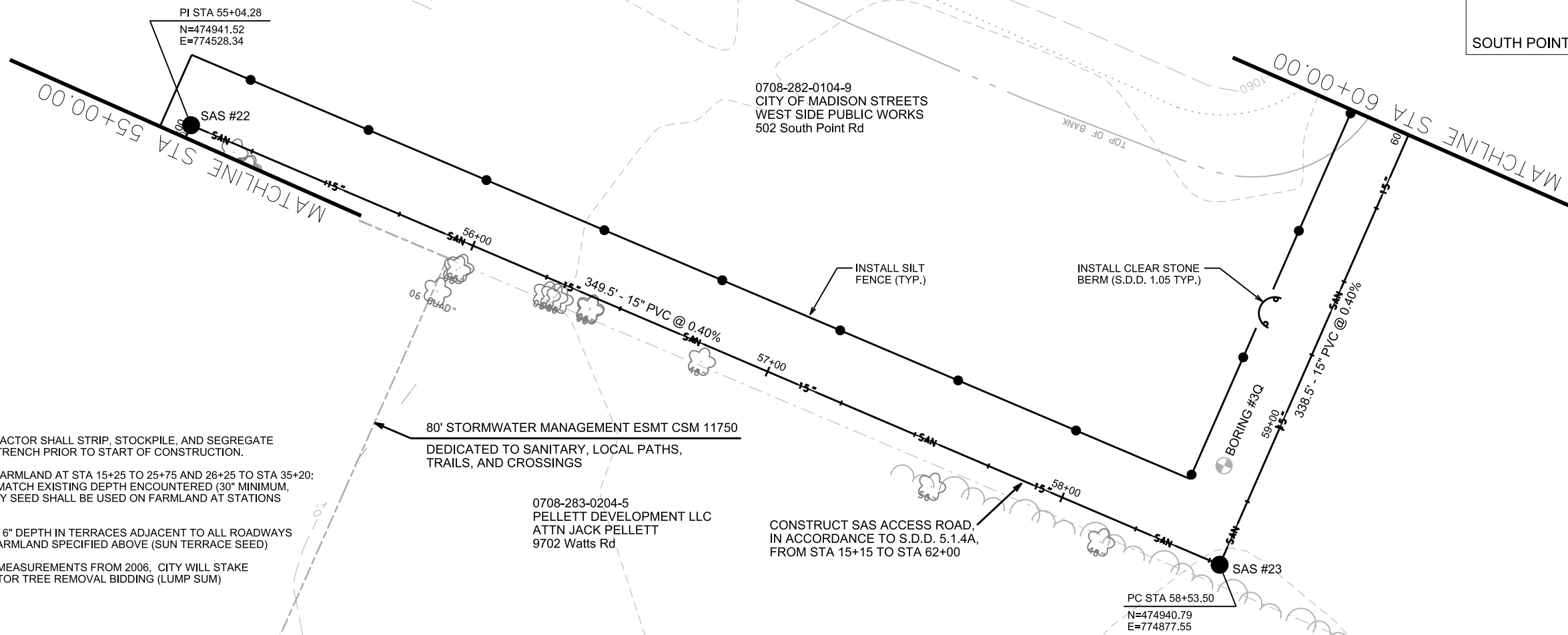


PLOT SCALE: 1"=40'

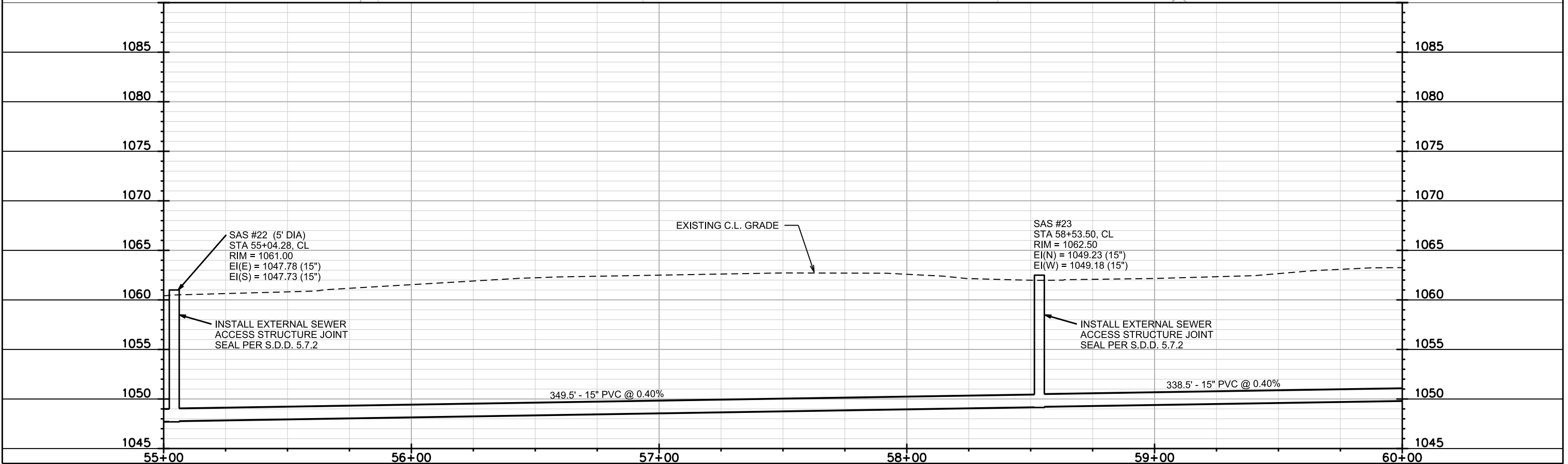
PLOT NAME:

REV. DATE:

ORIGINATOR: CITY OF MADISON, STREETS DIVISION



- NOTES
1. SALVAGE TOPSOIL: CONTRACTOR SHALL STRIP, STOCKPILE, AND SEGREGATE ALL TOPSOIL FROM OVER TRENCH PRIOR TO START OF CONSTRUCTION.
  2. TOPSOIL PLACEMENT ON FARMLAND AT STA 15+25 TO 25+75 AND 26+25 TO STA 35+20; (PERM EASEMENT) SHALL MATCH EXISTING DEPTH ENCOUNTERED (30" MINIMUM, 36" MAXIMUM). TEMPORARY SEED SHALL BE USED ON FARMLAND AT STATIONS SPECIFIED ABOVE.
  3. TOPSOIL DEPTH GENERAL- 6" DEPTH IN TERRACES ADJACENT TO ALL ROADWAYS AND AREAS OUTSIDE OF FARMLAND SPECIFIED ABOVE (SUN TERRACE SEED)
  4. TREE SIZES ON PLAN ARE MEASUREMENTS FROM 2006, CITY WILL STAKE EASEMENT FOR CONTRACTOR TREE REMOVAL BIDDING (LUMP SUM)



PLOT SCALE: 1"=40'  
PLOT NAME:  
REV. DATE:  
ORIGINATOR: CITY OF MADISON, STREETS DIVISION



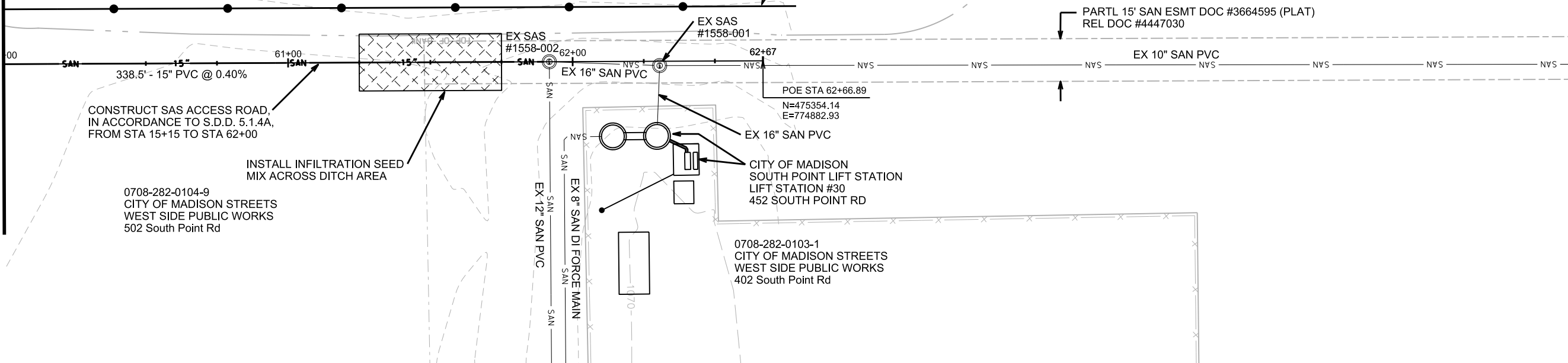
0708-282-0104-9  
CITY OF MADISON STREETS  
WEST SIDE PUBLIC WORKS  
502 South Point Rd

SILICON PRAIRIE PONDS

INSTALL SILT FENCE (TYP.)

PARTL 15' SAN ESMT DOC #3664595 (PLAT)  
REL DOC #4447030

MATCHLINE STA 60+00.00



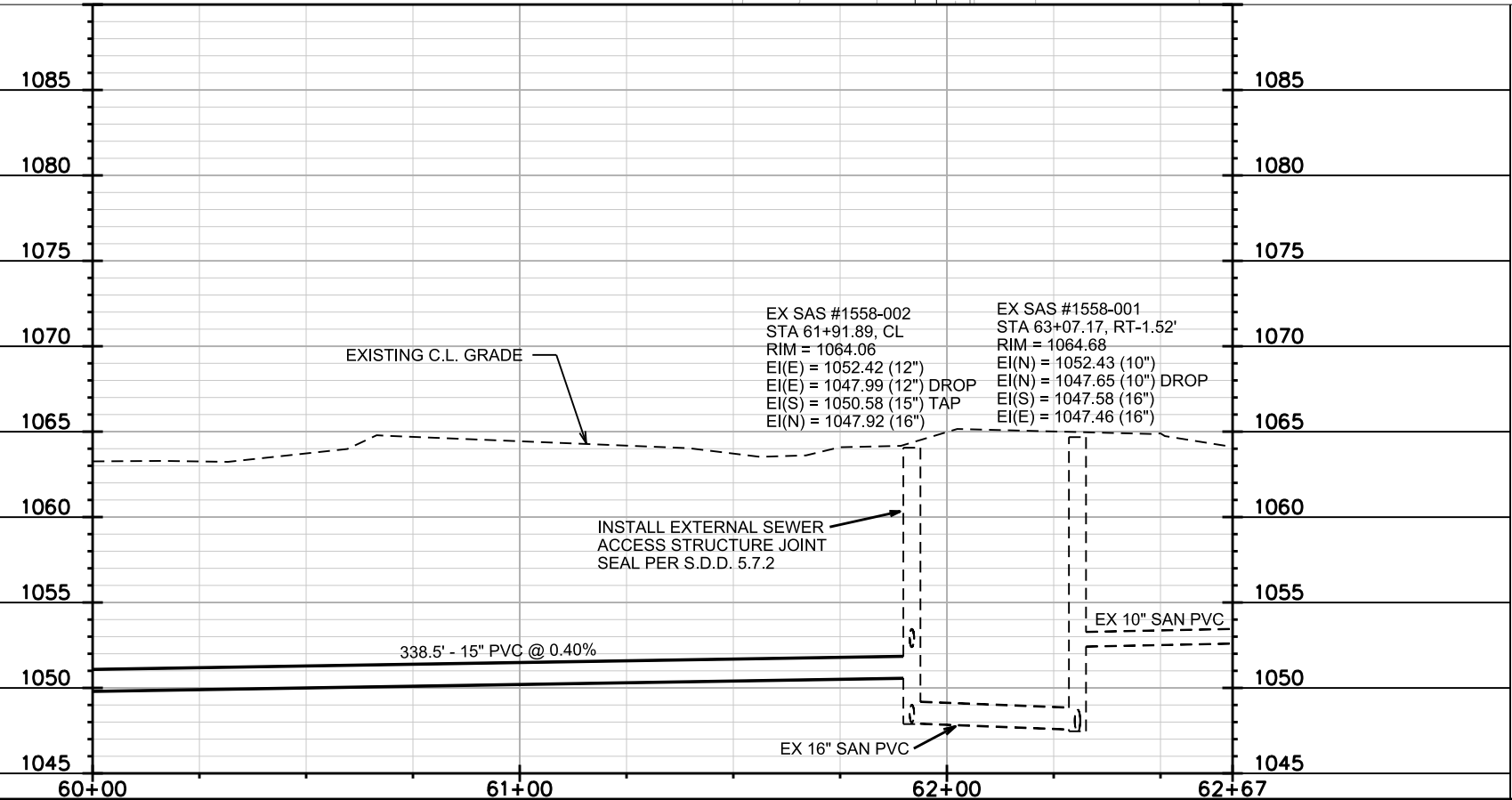
CONSTRUCT SAS ACCESS ROAD,  
IN ACCORDANCE TO S.D.D. 5.1.4A,  
FROM STA 15+15 TO STA 62+00

INSTALL INFILTRATION SEED  
MIX ACROSS DITCH AREA

0708-282-0104-9  
CITY OF MADISON STREETS  
WEST SIDE PUBLIC WORKS  
502 South Point Rd

CITY OF MADISON  
SOUTH POINT LIFT STATION  
LIFT STATION #30  
452 SOUTH POINT RD

0708-282-0103-1  
CITY OF MADISON STREETS  
WEST SIDE PUBLIC WORKS  
402 South Point Rd



EX SAS #1558-002  
STA 61+91.89, CL  
RIM = 1064.06  
EI(E) = 1052.42 (12")  
EI(E) = 1047.99 (12") DROP  
EI(S) = 1050.58 (15") TAP  
EI(N) = 1047.92 (16")

EX SAS #1558-001  
STA 63+07.17, RT-1.52'  
RIM = 1064.68  
EI(N) = 1052.43 (10")  
EI(N) = 1047.65 (10") DROP  
EI(S) = 1047.58 (16")  
EI(E) = 1047.46 (16")

INSTALL EXTERNAL SEWER  
ACCESS STRUCTURE JOINT  
SEAL PER S.D.D. 5.7.2

NOTES

1. SALVAGE TOPSOIL: CONTRACTOR SHALL STRIP, STOCKPILE, AND SEGREGATE ALL TOPSOIL FROM OVER TRENCH PRIOR TO START OF CONSTRUCTION.
2. TOPSOIL PLACEMENT ON FARMLAND AT STA 15+25 TO 25+75 AND 26+25 TO STA 35+20; (PERM EASEMENT) SHALL MATCH EXISTING DEPTH ENCOUNTERED (30" MINIMUM, 36" MAXIMUM). TEMPORARY SEED SHALL BE USED ON FARMLAND AT STATIONS SPECIFIED ABOVE.
3. TOPSOIL DEPTH GENERAL- 6" DEPTH IN TERRACES ADJACENT TO ALL ROADWAYS AND AREAS OUTSIDE OF FARMLAND SPECIFIED ABOVE (SUN TERRACE SEED)
4. TREE SIZES ON PLAN ARE MEASUREMENTS FROM 2006. CITY WILL STAKE EASEMENT FOR CONTRACTOR TREE REMOVAL BIDDING (LUMP SUM)

PLOT SCALE: 1"=40'  
PLOT NAME:  
REV. DATE:  
ORIGINATOR: CITY OF MADISON, STREETS DIVISION

# SANITARY SEWER SCHEDULE

## PROPOSED SANITARY STRUCTURES

SAS NO.	STATION	LOCATION (OFFSET)	TOP OF CASTING	E.I.	DEPTH	NOTES
<b>PHASE 3</b>						
SAS #1	12+63.92	RT-1.16	1039.75	1027.12	12.63	(1),(3)
SAS #2	15+17.14	CL	1052.50	1028.18	24.32	(1), (2)
SAS #3	17+42.14	CL	1041.50	1029.13	12.37	(1),(3)
SAS #4	19+61.90	CL	1041.00	1030.06	10.94	(1),(3)
SAS #5	21+81.90	CL	1041.75	1030.99	10.76	(1),(3)
SAS #6	24+02.38	CL	1043.00	1031.92	11.08	(1), (2)
SAS #7	26+11.09	CL	1045.00	1033.01	11.99	(1), (2)
SAS #8	29+26.24	CL	1045.00	1034.62	10.38	(1), (2)
SAS #9	29+56.19	CL	1045.00	1034.82	10.18	(1), (2)
SAS #10	32+31.19	CL	1048.00	1036.24	11.76	(1)
SAS #11	35+09.04	CL	1056.00	1037.68	18.32	(1), (2)
SAS #12	35+86.26	CL	1062.00	1038.12	23.88	(1), (2)
SAS #13	36+88.37	CL	1060.00	1038.68	21.32	(1)
SAS #14	38+51.20	CL	1060.00	1039.54	20.46	(1)
SAS #15	39+49.76	CL	1059.00	1040.08	18.92	(1), (2)
SAS #16	40+91.32	CL	1053.00	1040.83	12.17	(1), (2)
SAS #17	41+97.22	CL	1053.50	1041.41	12.09	(1)
SAS #18	44+97.22	CL	1063.00	1042.96	20.04	(1)
SAS #19	47+91.88	CL	1066.00	1044.49	21.51	(1), (2)
SAS #20	50+25.20	CL	1060.25	1045.71	14.54	(1), (2)
SAS #21	52+65.20	CL	1061.00	1046.72	14.28	(1), (3)
SAS #22	55+04.28	CL	1061.00	1047.73	13.27	(1), (2), (3)
SAS #23	58+53.50	CL	1062.50	1049.18	13.32	(1), (3)

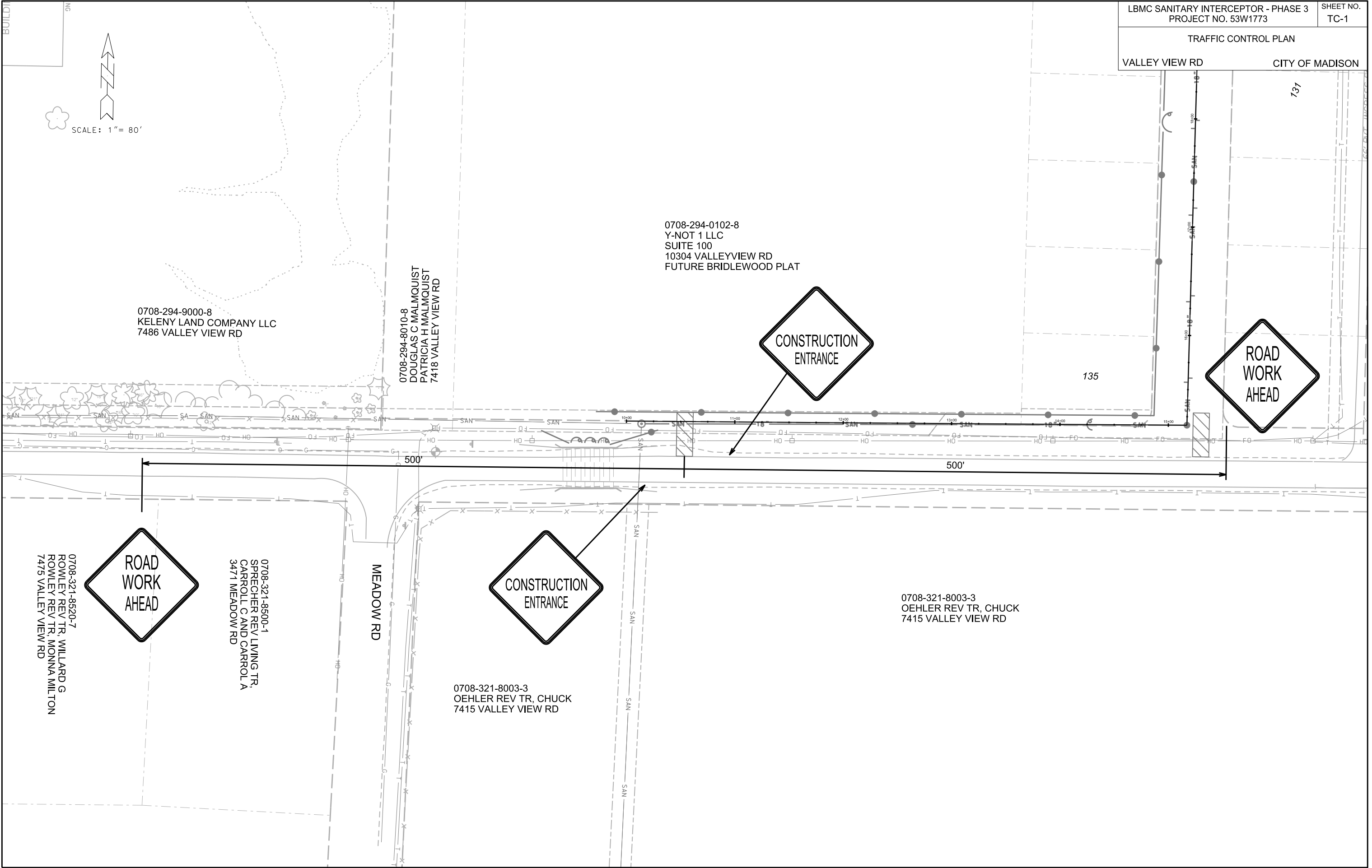
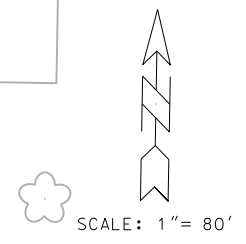
## PROPOSED SANITARY PIPES

FROM (DNSTM)	TO (UPSTM)	DWNSTRM E.I.	UPSTRM E.I.	PLAN (PAY) LGTH (FT)	SLOPE (%)	PIPE SIZE	PVC TYPE	NOTES
<b>PHASE 3</b>								
EX SAS #1461-001	SAS #1	1026.07	1027.12	250	0.42%	18"	ASTM F679 PS115	(4)
SAS #1	SAS #2	1027.17	1028.18	253.5	0.40%	18"	ASTM F679 PS115	
SAS #2	SAS #3	1028.23	1029.13	225	0.40%	18"	ASTM F679 PS115	-
SAS #3	SAS #4	1029.18	1030.06	220	0.40%	18"	ASTM F679 PS115	-
SAS #4	SAS #5	1030.11	1030.99	220	0.40%	18"	ASTM F679 PS115	-
SAS #5	SAS #6	1031.04	1031.92	220.5	0.40%	18"	ASTM F679 PS115	-
SAS #6	SAS #7	1031.97	1033.01	209	0.50%	18"	ASTM F679 PS115	-
SAS #7	SAS #8	1033.06	1034.62	315	0.50%	18"	ASTM F679 PS115	-
SAS #8	SAS #9	1034.67	1034.82	30	0.50%	18"	ASTM F679 PS115	-
SAS #9	SAS #10	1034.87	1036.24	275	0.50%	18"	ASTM F679 PS115	-
SAS #10	SAS #11	1036.29	1037.68	278	0.50%	18"	ASTM F679 PS115	-
SAS #11	SAS #12	1037.73	1038.12	77.5	0.50%	18"	ASTM F679 PS115	-
SAS #12	SAS #13	1038.17	1038.68	102	0.50%	18"	ASTM F679 PS115	-
SAS #13	SAS #14	1038.73	1039.54	162.5	0.50%	18"	ASTM F679 PS115	-
SAS #14	SAS #15	1039.59	1040.08	98	0.50%	18"	ASTM F679 PS115	-
SAS #15	SAS #16	1040.13	1040.83	140.5	0.50%	18"	ASTM F679 PS115	-
SAS #16	SAS #17	1040.88	1041.41	105	0.50%	18"	ASTM F679 PS115	-
SAS #17	SAS #18	1041.46	1042.96	300	0.50%	18"	ASTM F679 PS115	-
SAS #18	SAS #19	1043.01	1044.49	295	0.50%	18"	ASTM F679 PS115	-
SAS #19	SAS #20	1044.54	1045.71	233.5	0.50%	18"	ASTM F679 PS115	-
SAS #20	SAS #21	1045.76	1046.72	240	0.40%	15"	SDR-26	-
SAS #21	SAS #22	1046.77	1047.73	239	0.40%	15"	SDR-26	-
SAS #22	SAS #23	1047.78	1049.18	349.5	0.40%	15"	SDR-35	-
SAS #23	EX SAS #1558-002	1049.23	1050.58	338.5	0.40%	15"	SDR-35	(4)

## SPECIFIC NOTES

- (1) CASTING SHALL BE R-1916-C WITH FOUR (4) STAINLESS STEEL HEX BOLT. NO ADJUSTMENT RINGS SHALL BE USED.
- (2) STRUCTURE SHALL BE A 5' DIAMETER SAS
- (3) INSTALL EXTERNAL SEWER ACCESS STRUCTURE JOINT SEAL PER S.D.D. 5.7.2.
- (4) INSTALL EXTERNAL SEWER ACCESS STRUCTURE JOINT SEAL ON EXISTING SAS PER S.D.D. 5.7.2

TRAFFIC CONTROL PLAN  
VALLEY VIEW RD CITY OF MADISON



PLOT SCALE: 1"=40'

PLOT NAME:

REV. DATE:

ORIGINATOR: CITY OF MADISON, STREETS DIVISION