

Madison, Wisconsin

CITY OF MADISON

CITY ENGINEERING DIVISION

DEPARTMENT OF PUBLIC WORKS

PLAN OF PROPOSED IMPROVEMENT

PUBLIC IMPROVEMENT PROJECT APPROVED

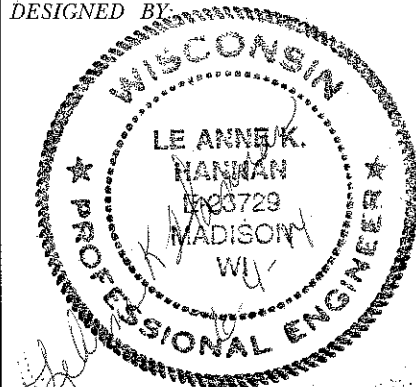
JUNE 3, 2014

BY THE COMMON COUNCIL OF MADISON, WISCONSIN

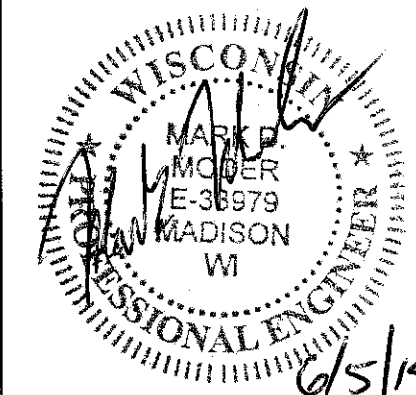
PUBLIC IMPROVEMENT DESIGN APPROVED BY:

Christy Bach 6-6-14
City Engineer Date

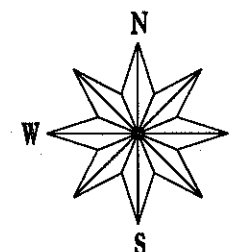
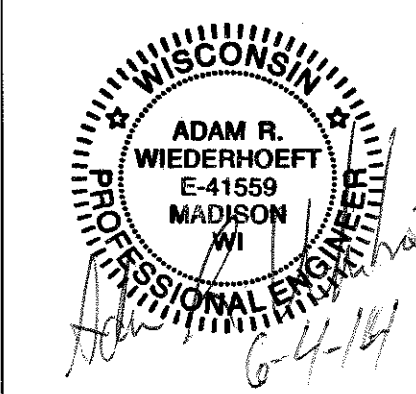
STREET DESIGNED BY:



SANITARY SEWER DESIGNED BY:



WATER DESIGNED BY:



INDEX OF SHEETS

SHEET NO.	TITLE
1	DETAILS
DI	EROSION CONTROL PLAN
ECI	STREET PLAN & PROFILES
PI	UTILITY PLAN & PROFILES
U1	WATER PLAN & PROFILES
WI	CROSS SECTIONS
XI	

MORRISON COURT RECONSTRUCTION

ASSESSMENT DISTRICT-2014

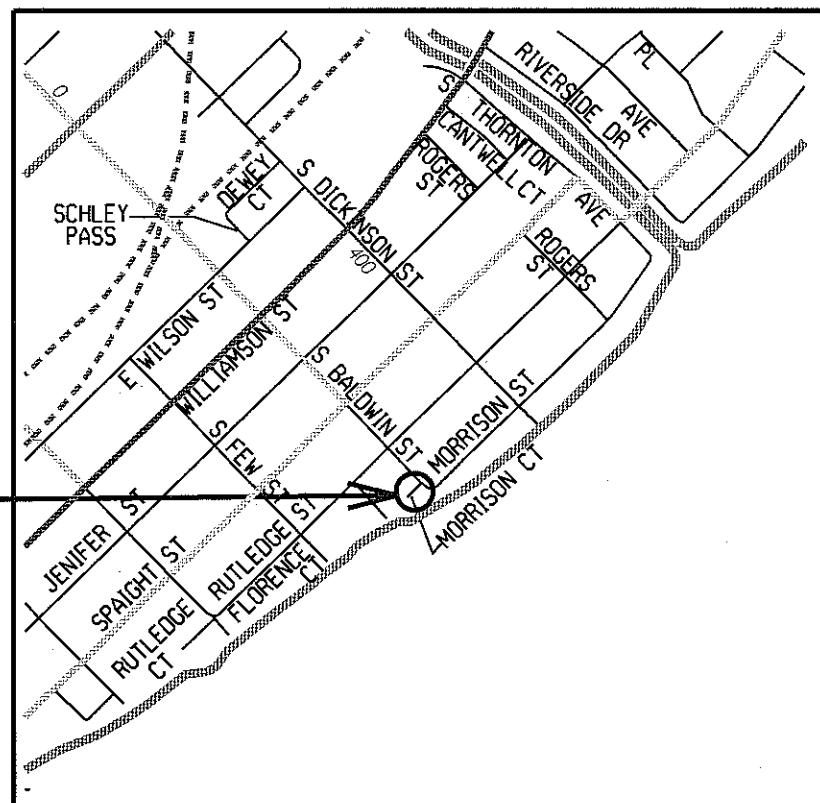
CITY PROJECT NO. 53W1622

CITY CONTRACT NO. 7317

CONVENTIONAL SIGNS

FIELD VERIFY ALL UTILITY LOCATIONS

GAS	— G —
STORM SEWER	— ST —
SANITARY SEWER	— SAN —
WATER	— W —
OVERHEAD ELECTRIC	— OH —
POWER POLE	⊕
ADA COMPLIANT RAMP W/ DETECTABLE WARNING FIELD	
COMBUSTIBLE FLUIDS	



CONSTRUCTION PROJECT LOCATION

NOTES:

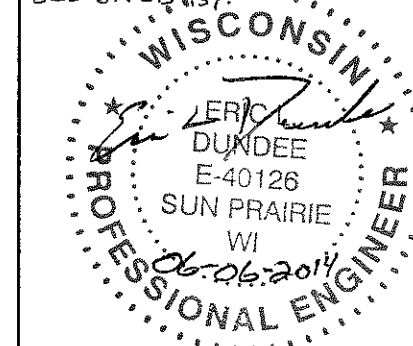
ALL GUTTERS SHALL DRAIN WITH A MINIMUM GRADE OF 0.50% TOWARD STORM SEWER INLETS.

SIDEWALK RAMPS AND CURB THRU SIDEWALK RAMPS SHALL HAVE A MAXIMUM SLOPE OF 1" PER 12". SIDEWALK AND CURB RAMPS SHALL BE CONSTRUCTED WITH A SIDE SLOPE OF 2.00%.

SIDEWALK SHALL HAVE A MINIMUM LONGITUDINAL SLOPE OF 0.50% AND A MAXIMUM LONGITUDINAL SLOPE OF 5.00% EXCEPT WHERE STREET GRADES EXCEED 5.00%.

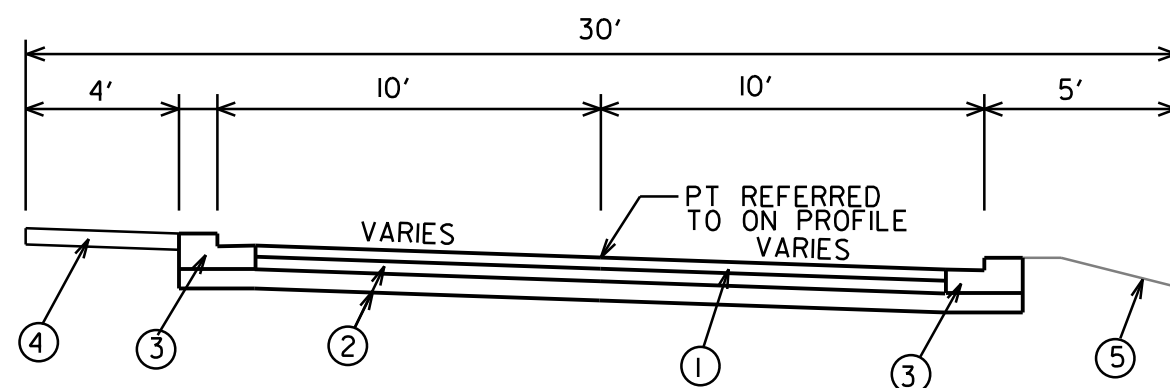
EARTH WORK SUMMARY:
EXCAVATION CUT (MEASURED PLAN QUANTITY).....100 C.Y.
ESTIMATED UNDISTRIBUTED UNDERCUT..... 40 C.Y.
TOTAL UNCLASSIFIED EXCAVATION CUT.....140 C.Y.

STORM SEWER DESIGNED BY:



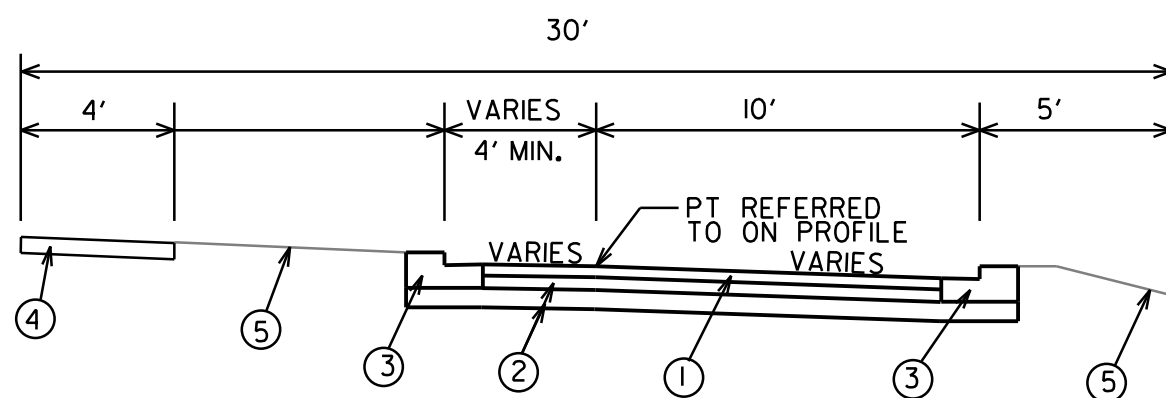
TYPICAL SECTIONS

MORRISON COURT
RECON. ASSM'T DIST-2014 CITY OF MADISON



STA 10+32.13 TO STA. 10+92.76

- ① 3-1/2" HMA PAV'T TYPE 0.3
- ② 4" C.A.B.C. GR. 2
6" C.A.B.C. GR. 1
- ③ TYPE "H" CONC. C&G. 4"
- ④ 5" CONC. SIDEWALK
- ⑤ TOPSOIL, SEED, MATTING



STA. 10+92.76 TO STA. 11+33.55

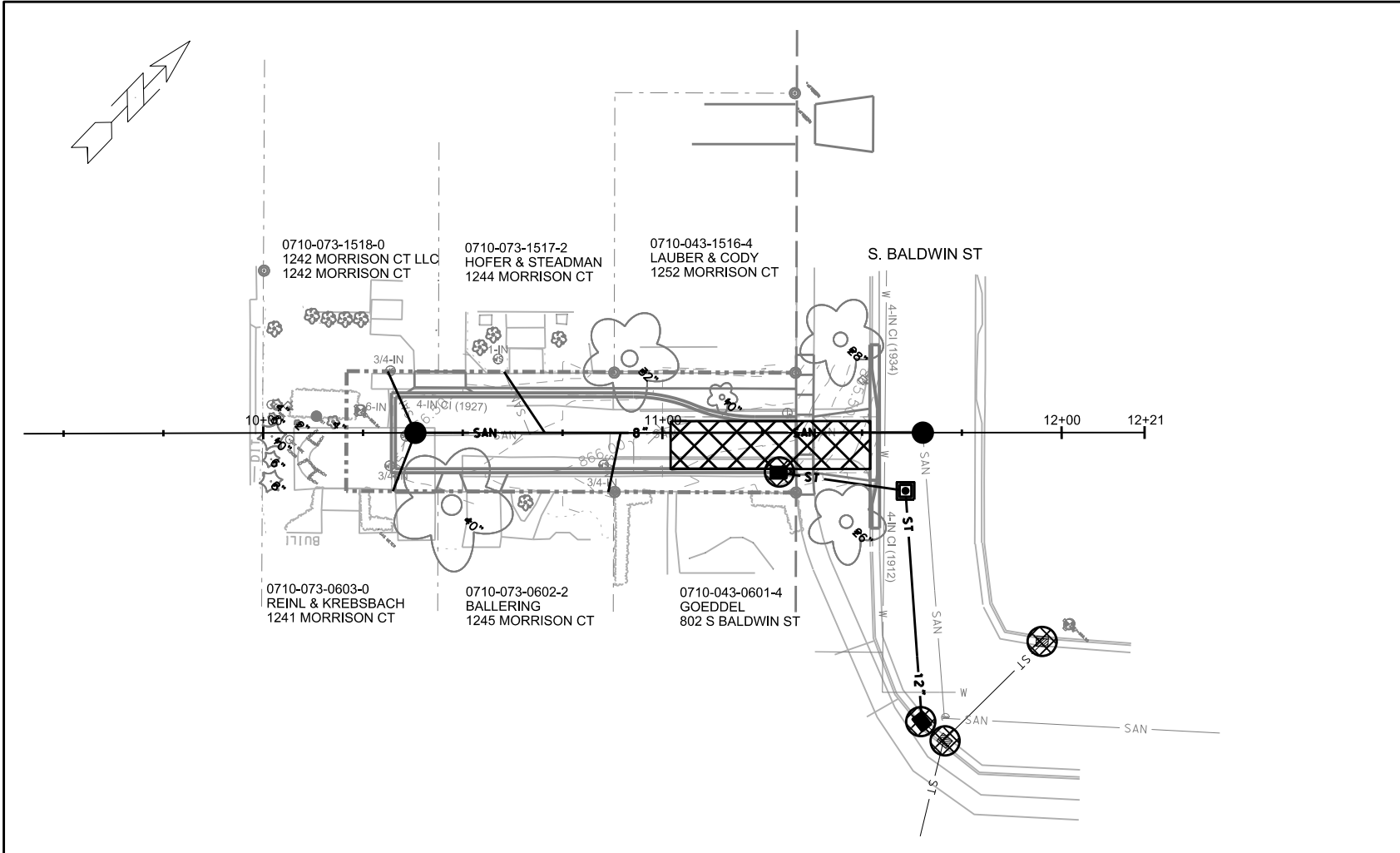
LEVELS ON - 1, 2, 3, 4, 5, 6, 7, 8, 9, 10, 11, 12, 13, 14, 15, 16, 17, 18, 19, 20, 21, 22, 23, 24, 25, 26, 27, 28, 29, 30, 31, 32, 33, 34, 35, 36, 37, 38, 39, 40, 41, 42, 43, 44, 45, 46, 47, 48, 49, 50, 51, 52, 53, 54, 55, 56, 57, 58, 59, 60, 61, 62, 63

PLOT SCALE:

PLOT NAME:

REV. DATE:

ORIGINATOR:



EROSION CONTROL NOTES:

EROSION CONTROL MEASURES SHALL BE IN PLACE PRIOR TO ANY OTHER CONSTRUCTION ACTIVITY.

THE CONTRACTOR IS RESPONSIBLE FOR THE CONSTRUCTION AND MAINTENANCE OF ALL EROSION CONTROL MEASURES UNTIL FINAL ACCEPTANCE BY THE CITY OF MADISON.

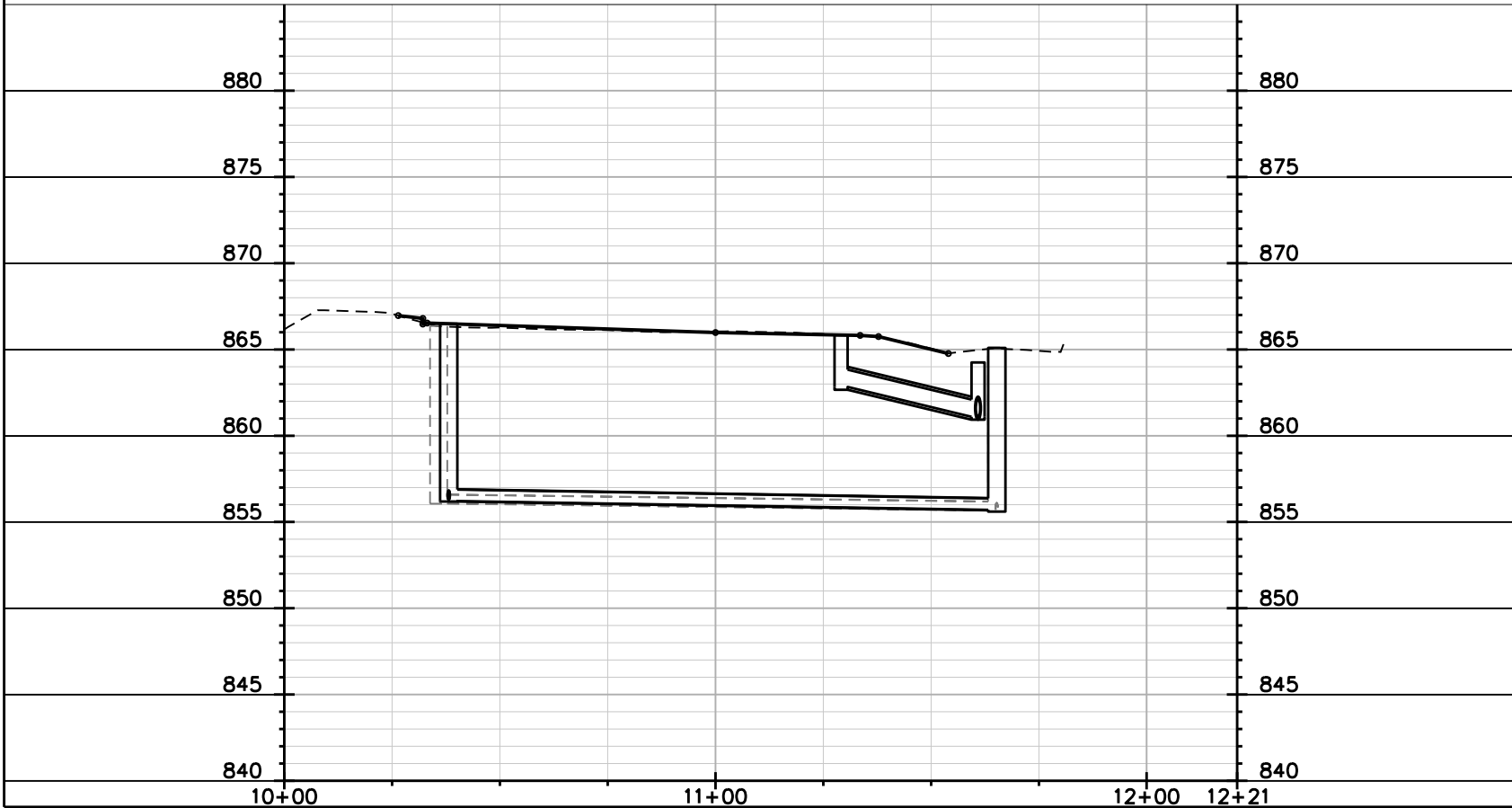
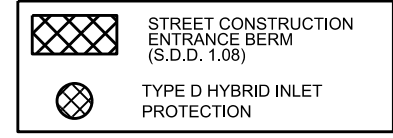
THE CONTRACTOR SHALL INSTALL AND MAINTAIN EROSION CONTROL MEASURES IN ACCORDANCE WITH THE WDNR SOC STANDARDS AND CITY OF MADISON STANDARD SPECIFICATIONS.

THE CONTRACTOR SHALL PROVIDE STREET CLEANING AS NEEDED ON A DAILY BASIS TO KEEP TRACKING TO A MINIMUM.

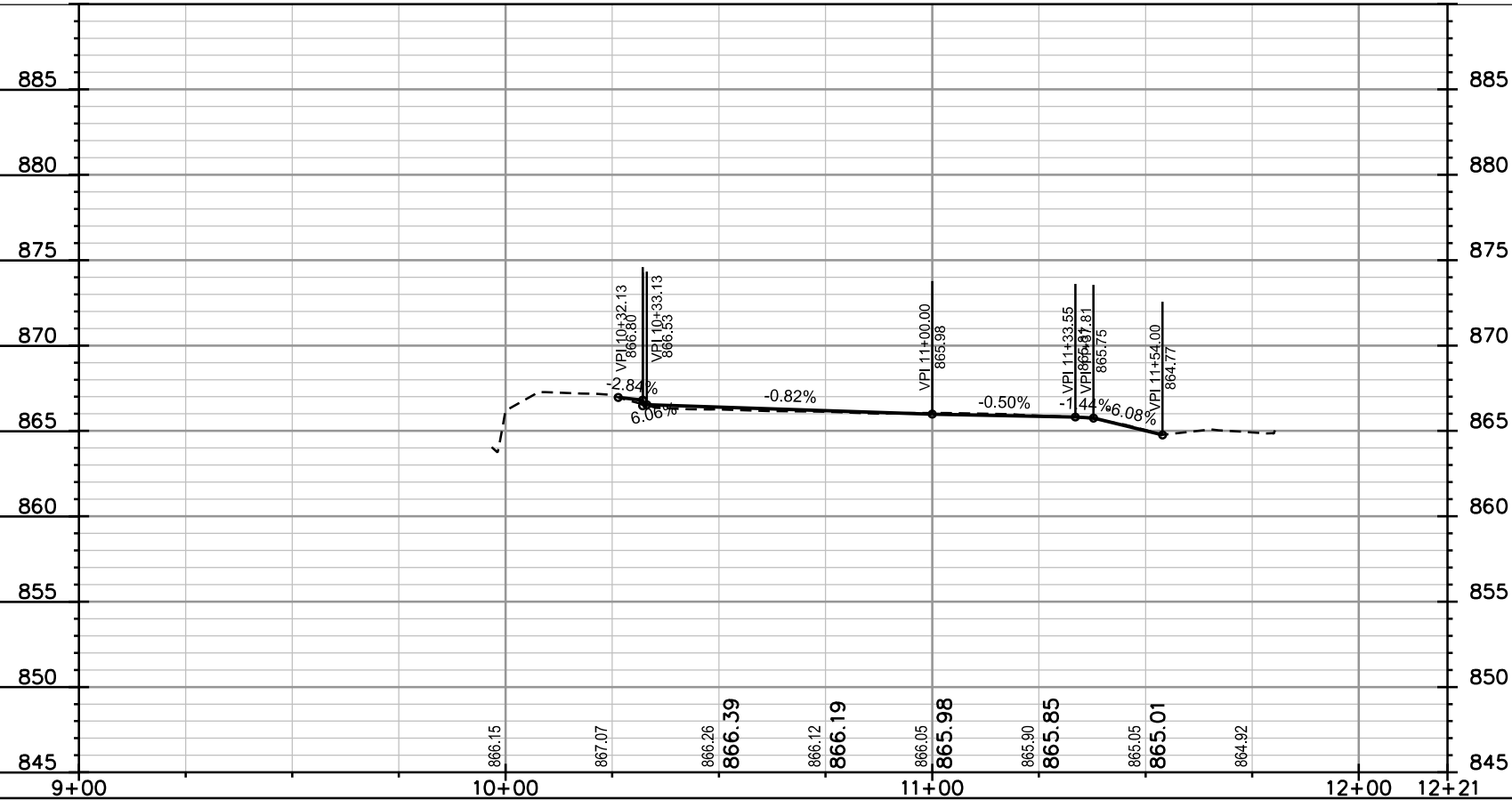
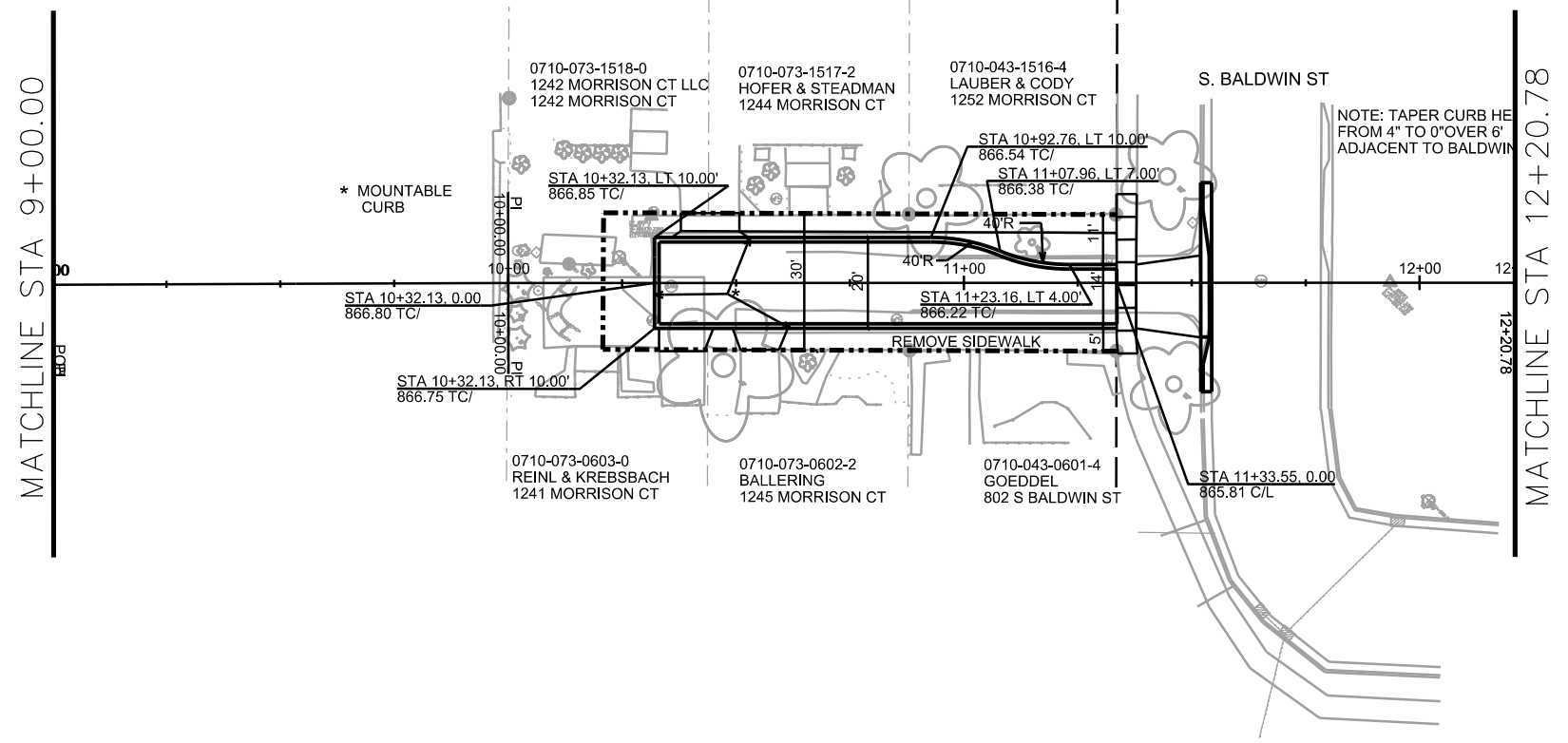
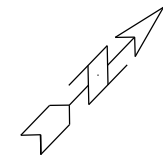
PROVISION OF AN EROSION CONTROL IMPLEMENTATION PLAN BY THE CONTRACTOR AT THE PRE-CON IS REQUIRED.

THE CONTRACTOR SHALL PROVIDE A CONSTRUCTION DEWATERING PLAN AS PART OF THE EROSION CONTROL IMPLEMENTATION PLAN.

POLYMER SHALL BE APPLIED TO DISTURBED AREAS AS DIRECTED BY THE CONSTRUCTION ENGINEER.



PLOT SCALE: _____
 PLOT NAME: _____
 REV. DATE: _____
 ORIGINATOR: CITY OF MADISON, STREETS DIVISION



SANITARY SEWER SCHEDULE

PROPOSED SANITARY STRUCTURES

SAS NO.	STATION	LOCATION (OFFSET)	TOP OF CASTING	E.I.	DEPTH	NOTES
SAS #1	11+65.25	CL	865.09	855.60	9.49	-
SAS #2	10+38.13	CL	866.49	856.21	10.28	-

PROPOSED SANITARY PIPES

FROM (DNSTM)	TO (UPSTM)	DWNSTRM E.I.	UPSTRM E.I.	PLAN (PAY) LGTH (FT)	SLOPE (%)	PIPE SIZE	PVC TYPE	NOTES
SAS #1	SAS #2	855.70	856.21	127	0.40%	8"	SDR-35	-

SANITARY STRUCTURE REMOVALS

STRUCTURE ID NO.	STATION	LOCATION (OFFSET)	TOP OF CASTING	E.I.	DEPTH	NOTES
5646-014	10+35.79	RT-0.75	866.35	856.08	10.27	-
5646-013	11+65.22	LT-0.37	865.11	855.60	9.51	-

SANITARY PIPE REMOVALS

REMOVE FROM	REMOVE TO	LGTH (FT)	PIPE TYPE	PIPE SIZE	PAID (Y/N)	NOTES
EX SAS 5646-013	EX SAS 5646-014	130	VP	6"	N	-

STORM SEWER SCHEDULE

PROPOSED STORM STRUCTURES

STRUC. NO.	STATION	LOCATION (OFFSET)	TYPE	TOP OF CASTING	E.I.	DEPTH	NOTES
S-1	11+64.95	RT-72.40	H INLET	862.60	859.85	2.75	FP, WR-3067-7004-V
S-2	11+60.89	RT-14.55	3X3 SAS	864.25	861.10	3.15	WR-1550-0054
S-3	11+29.11	RT-10.00	H INLET	865.83	862.83	3.00	(1) WR-3067-7004-V

(1) ADJUST CASTING CURB BOX TO MATCH PROPOSED 4" CURB HEAD, MODIFY FLOWLINE AS NEEDED

PROPOSED STORM PIPES

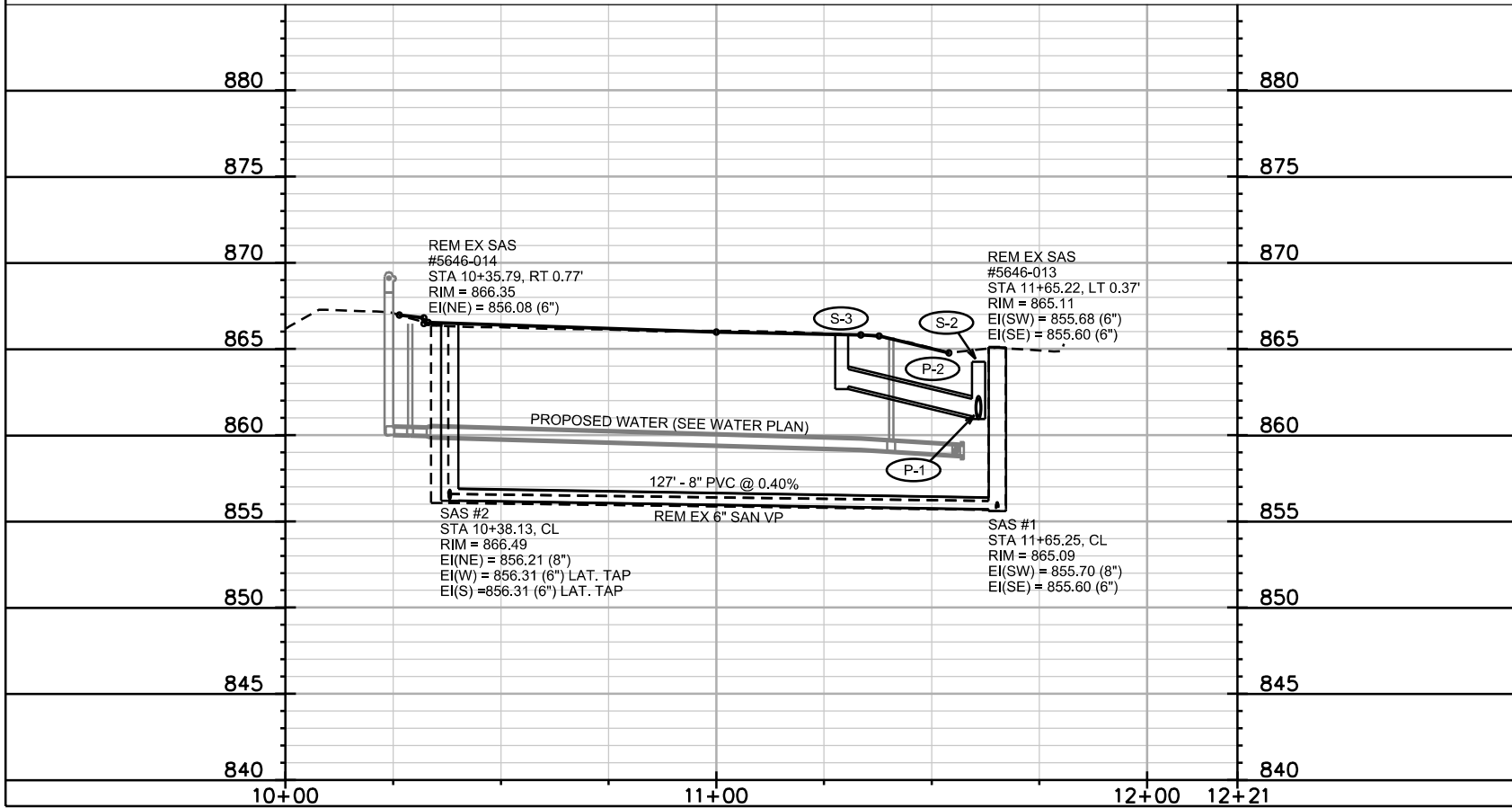
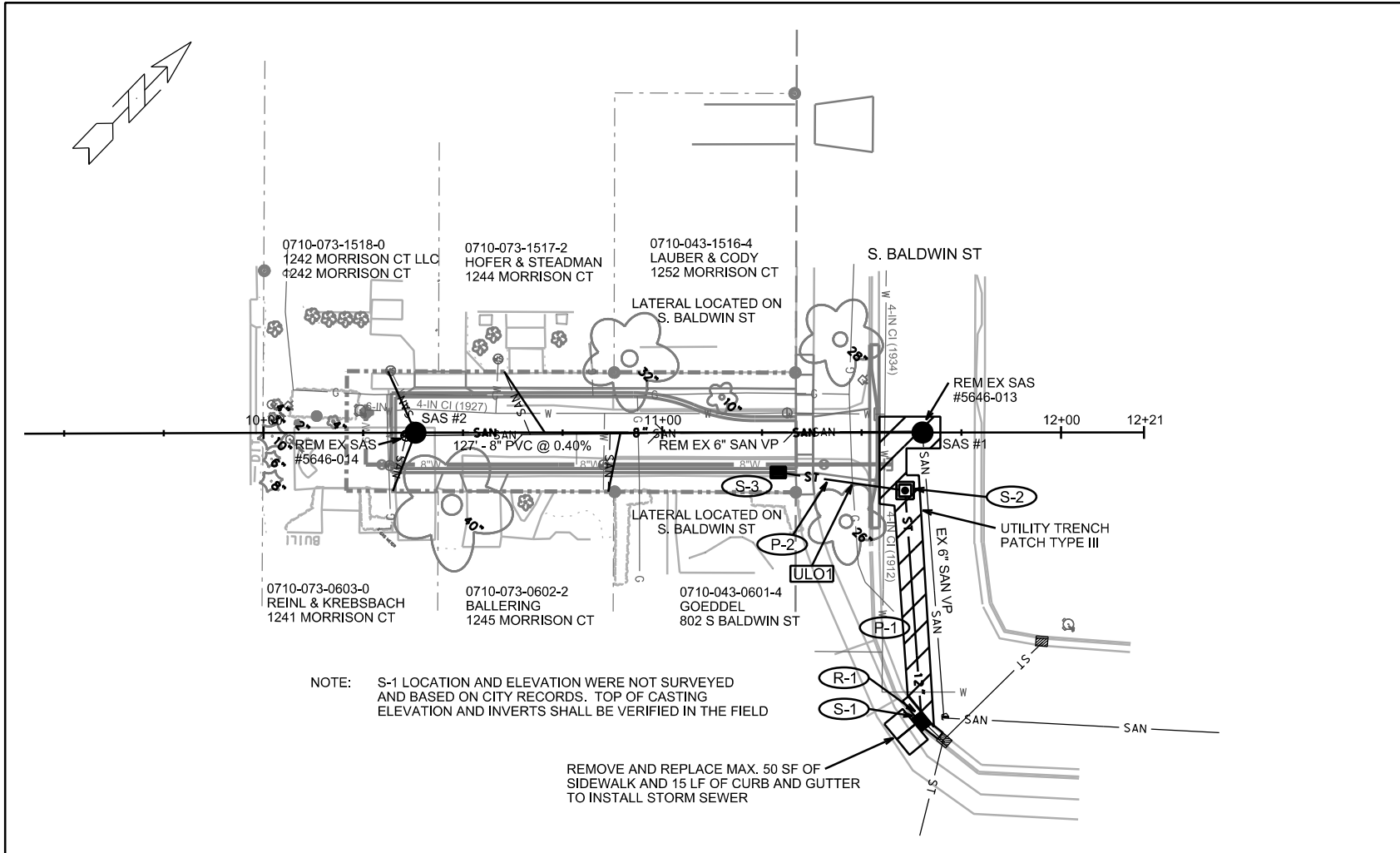
PIPE NO.	FROM (DNSTM)	TO (UPSTM)	DISCH. E.I.	INLET E.I.	PLAN (PAY) LGTH (FT)	PIPE LGTH (FT)	SLOPE (%)	PIPE SIZE	TYPE	NOTES
P-1	S-1	S-2	859.85	861.10	58	55	2.27%	12"	RCP	-
P-2	S-2	S-3	861.10	862.83	32	29	5.97%	12"	RCP	-

REMOVE STORM STRUCTURES

STRUC. NO.	ID NO.	STATION	LOCATION (OFFSET)	TYPE	NOTES
R-1	EX IN 5646-000	11+64.95	RT-72.40	INLLT	-

STORM SEWER ULOs

ULO NO.	STATION	LOCATION (OFFSET)	TYPE	NOTES
ULO1	11+47.69	RT-12.66	GAS	-



CONSTRUCTION NOTES:

1. CONSTRUCT NEW WATER MAIN 6.0' BELOW FINISHED GRADE, UNLESS OTHERWISE NOTED. INSULATE MAIN WITH POLYSTYRENE BOARD AT UTILITY CROSSINGS OR AS REQ'D BY THE ENGINEER.
 2. VERIFY SIZE OF EXISTING WATER SERVICES AND RECONNECT/REPLACE SERVICES AS INDICATED.
 3. MINIMIZE DISTURPTION OF SERVICE TO EXISTING CUSTOMERS. NOTIFY PER CONTRACT REQUIREMENTS OF ANY PLANNED WATER OUTAGE.
 4. EXISTING WATER MAIN SHALL REMAIN IN SERVICE UNTIL NEW WATER MAIN IS TESTED AND ACCEPTED BY MADISON WATER UTILITY AND ALL SERVICES ARE RECONNECTED.
 5. THE EXISTING UTILITIES SHOWN ON THIS PLAN REPRESENT THE BEST INFORMATION AVAILABLE TO THE WATER UTILITY AT THE TIME OF PLAN PREPARATION. CONTRACTOR IS RESPONSIBLE FOR HAVING EACH UTILITY LOCATED PRIOR TO COMMENCING WORK.
- WN1 - REPLACE THE EXISTING LEAD SERVICE WITH A NEW COPPER SERVICE.
- WN2 - EXTEND AND RECONNECT THE EXISTING COPPER SERVICE TO THE NEW WATER MAIN.
- WN3 - EXISTING SERVICE TO BE ABANDONED WHEN THE WATER MAIN IS CUT OFF.
- WN4 - DISCONNECT FROM THE OLD WATER MAIN AND RECONNECT THE EXISTING COPPER WATER SERVICE LATERAL TO THE NEW WATER MAIN.
- WN5 - RELOCATE THE EXISTING FIRE HYDRANT.
- WN6 - ABANDON WATER VALVE ACCESS STRUCTURE.
- WN7 - FURNISH AND INSTALL THE NEW TOP SECTION FOR THE WATER ACCESS STRUCTURE.
- WN8 - ABANDON THE VALVE BOX.
- WN9 - FURNISH THE DITCH, COMPACTION, AND ALL MATERIALS AND LABOR FOR THE INSTALLATION OF NEW SERVICE LATERAL.
- WN10 - REMOVE AND SALVAGE EXISTING HYDRANT.
- WN11 - REPLACE THE EXISTING COPPER SERVICE W/ A COPPER SERVICE.

ESTIMATE OF MATERIALS SUPPLIED BY CONTRACTOR:

* ESTIMATE OF MATERIALS IS FOR INFORMATION ONLY. ENGINEER DOES NOT GUARANTEE ACCURACY OF MATERIAL TAKE-OFF.

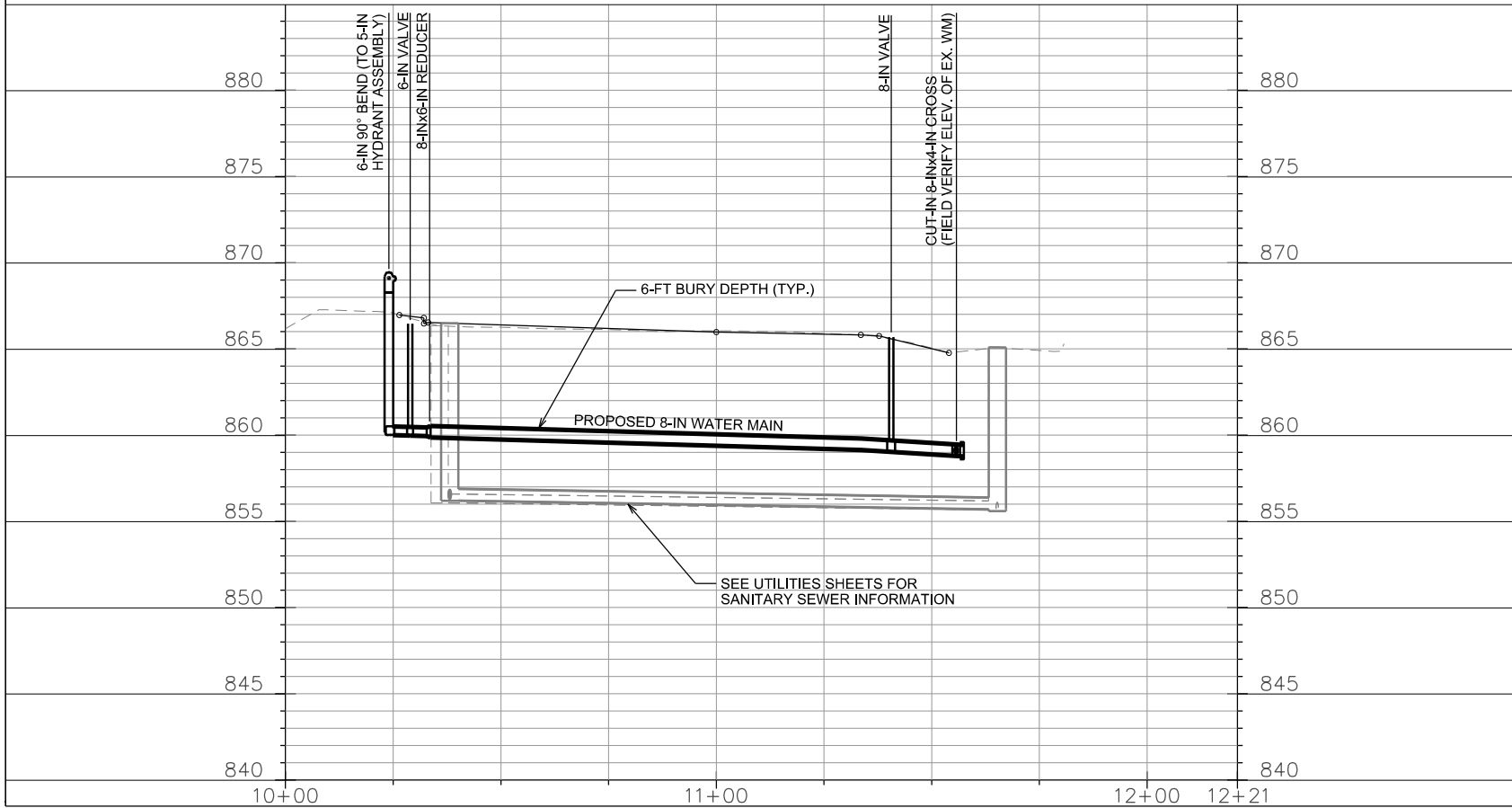
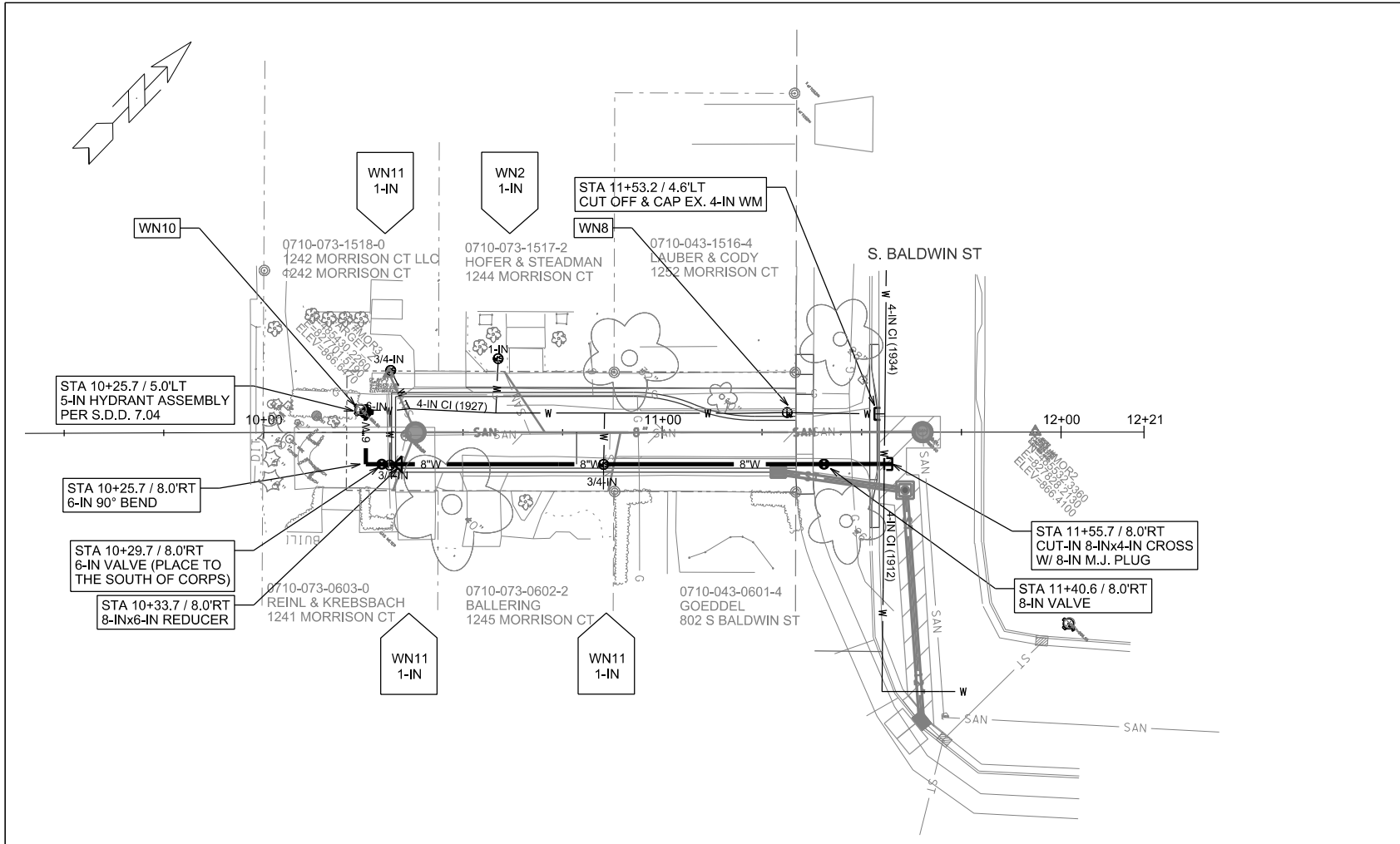
- | | |
|----------------------------|-----------------------------|
| 25-FT - 6-IN PIPE | 1 - 6-IN 90° BEND |
| 125-FT - 8-IN PIPE | 1 - 8-IN X 4-IN CROSS |
| 150-FT - POLYWRAP | 1 - 8-IN X 6-IN REDUCER |
| 1 - 6-IN VALVE & BOX | 3/4-IN & 1-IN COPPER TUBING |
| 1 - 8-IN VALVE & BOX | 3 - 1-IN CURB STOPS |
| BOX EXTENSIONS (AS REQ) | 3 - 1-IN CURB BOXES |
| 1 - 5-IN HYDRANT | SERVICE COUPLINGS (AS REQ) |
| HYDRANT EXTENSION (AS REQ) | |
| 1 - 4-IN MJ CAP | |
| 1 - 8-IN MJ PLUG | |

MATERIALS SUPPLIED BY CITY:

NONE

REUSED MATERIALS

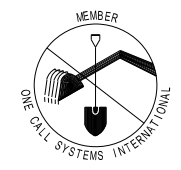
NONE



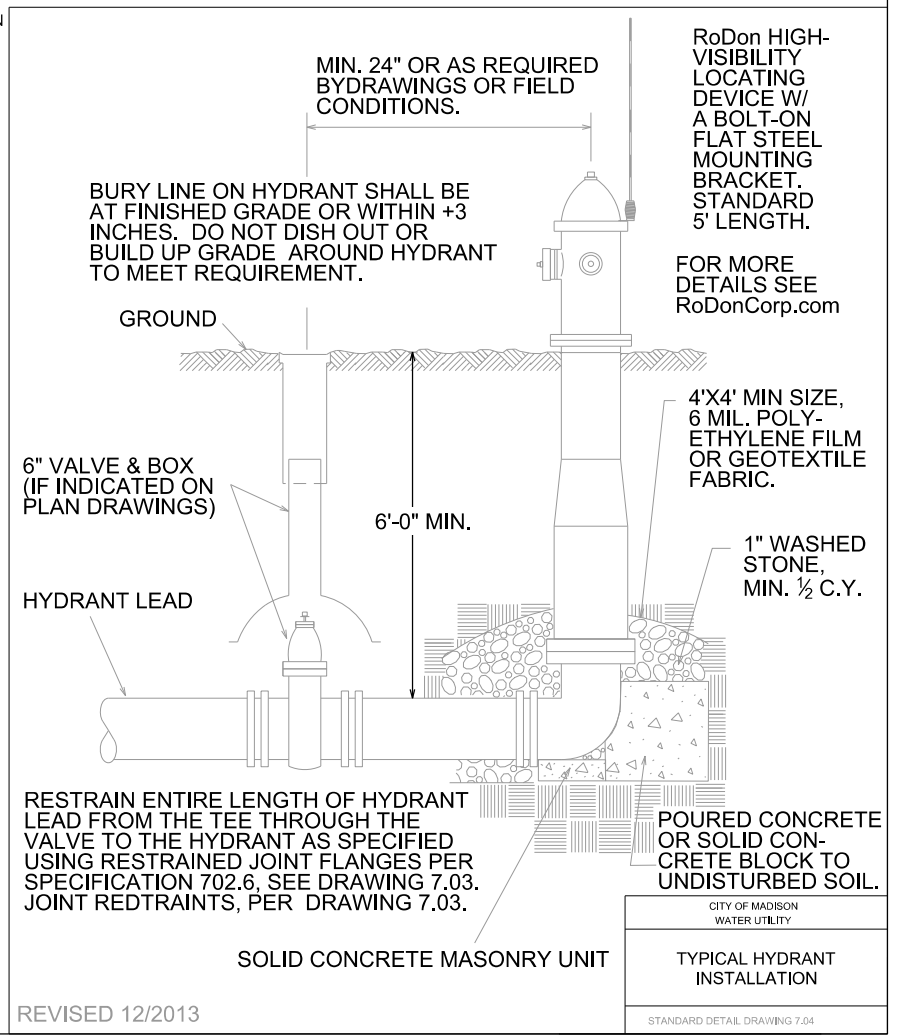
TO OBTAIN LOCATION OF PARTICIPANTS' UNDERGROUND FACILITIES BEFORE YOU DIG IN WISCONSIN

CALL DIGGERS HOTLINE
TOLL FREE
811 OR 1-800-242-8511
FAX-A-LOCATE 1-800-338-3860
TDD (FOR HEARING IMPAIRED) 1-800-542-2289

WIS. STATUTE 182.0175 (1974)
REQUIRES MIN. OF 3 WORK DAYS
NOTICE BEFORE YOU EXCAVATE.



DISCLAIMER NOTE:
UTILITY LOCATIONS SHOWN ARE APPROXIMATE ONLY. IT SHALL BE THE CONTRACTOR'S RESPONSIBILITY TO DETERMINE THE EXACT HORIZONTAL AND VERTICAL LOCATION OF ALL EXISTING UNDERGROUND AND OVERHEAD UTILITIES PRIOR TO COMMENCING WORK.



REVISED 12/2013

CITY OF MADISON WATER UTILITY
STANDARD DETAIL DRAWING 7.04

CROSS SECTIONS

MORRISON CT

CITY OF MADISON

PLOT SCALE: _____

PLOT NAME: _____

REV. DATE: _____

ORIGINATOR: CITY OF MADISON, STREETS DIVISION

