



Department of Public Works
Engineering Division
Robert F. Phillips, P.E., City Engineer

City-County Building, Room 115
210 Martin Luther King, Jr. Boulevard
Madison, Wisconsin 53703
Phone: (608) 266-4751
Fax: (608) 264-9275
engineering@cityofmadison.com
www.cityofmadison.com/engineering

Assistant City Engineer
Michael R. Dailey, P.E.

Principal Engineer 2
Gregory T. Fries, P.E.
Christopher J. Petykowski, P.E.

Principal Engineer 1
Christina M. Bachmann, P.E.
Eric L. Dundee, P.E.
John S. Fahrney, P.E.

Facilities & Sustainability
Jeanne E. Hoffman, Manager

Operations Manager
Kathleen M. Cryan

Mapping Section Manager
Eric T. Pederson, P.S.

Financial Manager
Steven B. Danner-Rivers

February 16, 2016

NOTICE OF ADDENDUM
ADDENDUM NO. 1
CONTRACT NO. 7623

EAST & WEST MIFFLIN STREET, NORTH CARROLL STREET AND NORTH PINCKNEY -
ASSESSMENT DISTRICT 2016

Revise and amend the contract document(s) for the above project as stated in this addendum, otherwise, the original document shall remain in effect.

SPECIAL PROVISIONS:

ADD TO SECTION 105.12 COOPERATION BY THE CONTRACTOR

UNDER COORDINATION WITH UTILITIES

The Mullins Group will pull additional line into the existing handhole located at the intersection of State St. and Mifflin St. The additional line will provide more slack for their fiber optic line. This additional slack will allow for the Contractor to make slight adjustments to the horizontal location of the conduit to allow for construction of the water services and sanitary sewer main along N. Carroll St. and W. Mifflin St. Coordinate with the Mullins Group prior to performing this work so that they may inspect their facility while working in close vicinity to it. The Contractor may need to expose more of the fiber optic conduit as needed in order to determine the best method for working around this facility.

Also, the Mullins Group anticipates making modifications to the existing hand hole located at the intersection of State St. and Mifflin St. The Contractor shall coordinate with them to provide space and a timeframe to perform this work.

Contact Sue Springman at 608-285-8090 with questions regarding the Mullins Group fiber line.

UNDER SECTION 109.2 PROSECUTION OF WORK

REMOVE THE THIRD (3RD) PARAGRAPH

REPLACE WITH:

The Contractor shall restore the site, place all temporary pavement and sidewalk, and remove all equipment and materials for the Art Fair on the Square event by **noon on Friday, July 8, 2016.**

UNDER BID ITEM 40403 – 10 INCH CONCRETE PAVEMENT

ADD TO THE DESCRIPTION:

All dowel and tie bars shall be epoxy coated.

The concrete pavement may be installed by slip-forming, but it is not required to be slip-formed.

UNDER SECTION 703.7 CONNECTING TO EXISTING WATER MAINS AND SECTION 703.8 WATER MAIN SHUTOFFS

REVISE THE BULLETED LIST OF LOCATIONS WITH SERVICES LARGER THAN 2-IN TO BE RECONNECTED SIMULTANEOUSLY (2ND MAIN BULLET POINT) AS FOLLOWS:

Revise the addresses of the 5th bullet to be 5 N. Pinckney St. and 7 N. Pinckney St.

Add the following sub-bulleted item to the list of locations:

- o The service to 15 N. Pinckney St. may be reconnected independently (exception).

UNDER BID ITEM 90004 – REMOVE, SALVAGE & REINSTALL GRANITE CURB & FOUNDATION

ADD TO THE DESCRIPTION:

Saw cut the foundation wall as necessary prior to removal, which shall be considered incidental to this bid item.

When reinstalling the concrete foundation wall, four (4) 12-inch #5 epoxy coated tie bars shall be installed to tie the new foundation wall to the adjacent, existing foundation wall. Tie bars shall be installed adjacent to the longitudinal rebar.

PROPOSAL:

Several items have been revised, added or removed. A summary of the changes to the proposal are as follows:

Action	Bid Item	Description	Original Quantity	New Quantity
REMOVE	50801	UTILITY LINE OPENING (ULO) UNDISTRIBUTED	3 EACH	0 EACH
REMOVE	50801	UTILITY LINE OPENING (ULO)	8 EACH	0 EACH
MODIFY	50801	UTILITY LINE OPENING (ULO)	11 EACH	12 EACH
MODIFY	70001	FURNISH AND INSTALL 4 INCH PIPE & FITTINGS	250 L.F.	270 L.F.
MODIFY	70030	FURNISH AND INSTALL 4-INCH WATER VALVE	7 EACH	8 EACH
MODIFY	70033	FURNISH AND INSTALL 10-INCH WATER VALVE	10 EACH	11 EACH
MODIFY	90004	REMOVE, SALVAGE & REINSTALL GRANITE CURB & FOUNDATION	120 L.F.	130 L.F.

NOTE: Item 50801 was listed in the proposal multiple times. Only one shall remain with a quantity of 12.

February 16, 2016

Page 3

PLAN SET:

Remove and Replace revised plan sheets as follows:

Sheet P-4: Additional removal & replacement of planter curb & foundation wall shown

Sheet W-2: Added 10-in valve at intersection of E/W Mifflin St. and Wisconsin Ave.

Sheet W-4: Updated service reconnections between 7 and 23 N. Pinckney St.

Sheet W-5: Updated plan to reflect changes on W-4

Sheet W-6: Updated material quantity estimates

FOR INFORMATIONAL PURPOSES ONLY:

Larger scaled images of the intersections included with this project are being provided for informational purposes. These images will not be updated with revisions and only reflect the plan for work at the time of this addendum. These images are not intended to be part of the contract documents for the project and shall be used as additional information only.

Please acknowledge this addendum on page E1 of the contract documents and/or in Section E: Bidder's Acknowledgement on Bid Express.

Electronic version of these documents can be found on the Bid Express web site at:

<http://www.bidexpress.com>

If you are unable to download plan revisions associated with the addendum, please contact the Engineering office at 608-266-4751 receive the material by another route.



Robert F. Phillips, P.E., City Engineer

RFP:jmw

0709-133-3006-8
OSORIO INVESTMENTS LLC
23 N Pinckney St

0709-133-3005-0
OSORIO INVT'S LLC
19 N Pinckney St

0709-133-3004-2
15 NORTH PINCKNEY LLC
15 N Pinckney St

0709-133-3003-4
ONE NORTH PINCKNEY
ASSOCIATES LTD PARTNERSHIP
7 N Pinckney St

0709-133-3002-6
5 NORTH PINCKNEY LLC
5 N Pinckney St

0709-133-3001-8
ONE NORTH
PINCKNEY ASSOC
LTD PARTNERSHIP
1 N Pinckney St

REV 2-15-16 JMW

2016 CAPITOL SQUARE RESURFACING
PROJECT NO. 10903

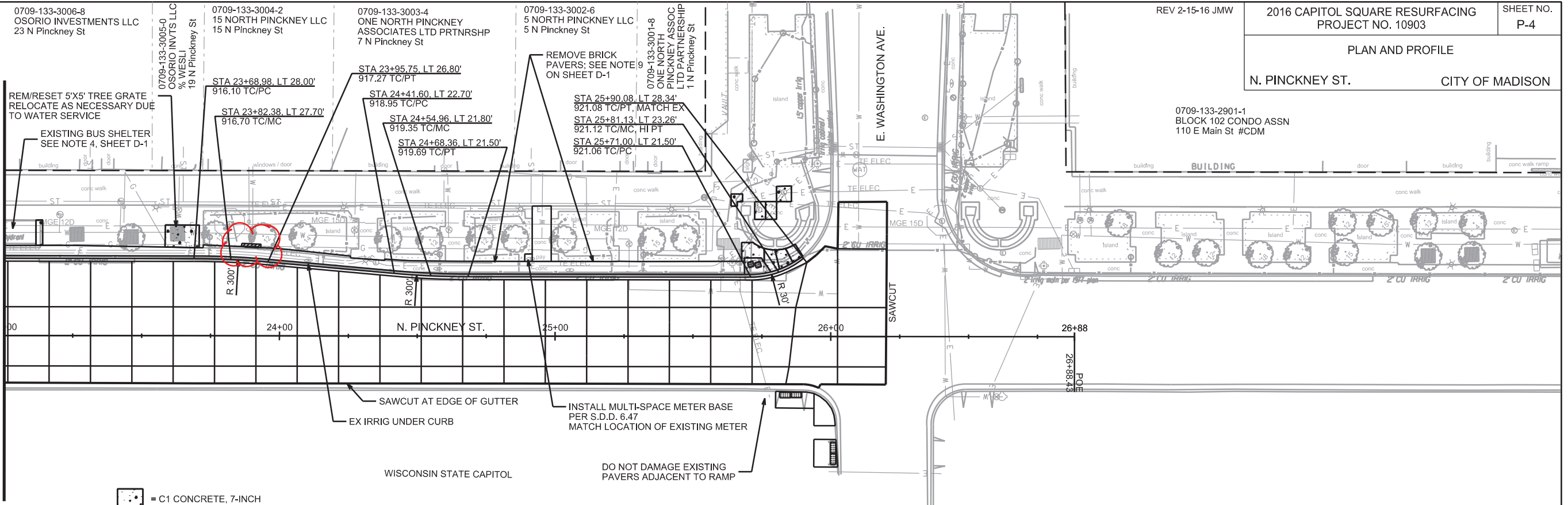
SHEET NO.
P-4

PLAN AND PROFILE

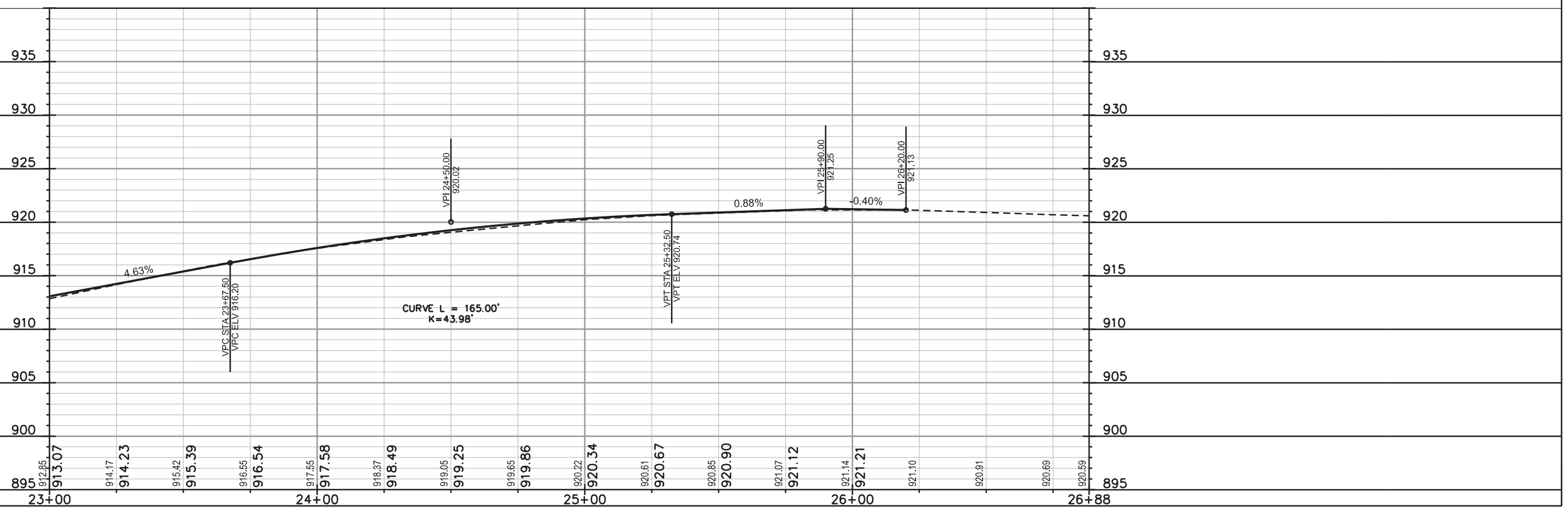
N. PINCKNEY ST. CITY OF MADISON

0709-133-2901-1
BLOCK 102 CONDO ASSN
110 E Main St #CDM

MATCHLINE STA 23+00.00



- = C1 CONCRETE, 7-INCH
- = REMOVE, SALVAGE & RESET GRANITE CURB



PLOT SCALE: _____

PLOT NAME: _____

REV. DATE: _____

ORIGINATOR: CITY OF MADISON, STREETS DIVISION

0709-144-2504-0
MADISON RE PROPERTIES
& MAD EAST SHOPPING CTR
30 W Mifflin St

0709-144-2506-6
ASSOC LLC
C/O MOREN INV/LLC
20 WEST MIFFLIN ST

0709-144-2507-4
MIFFLIN ENTERPRISES LLC
14 W Mifflin St

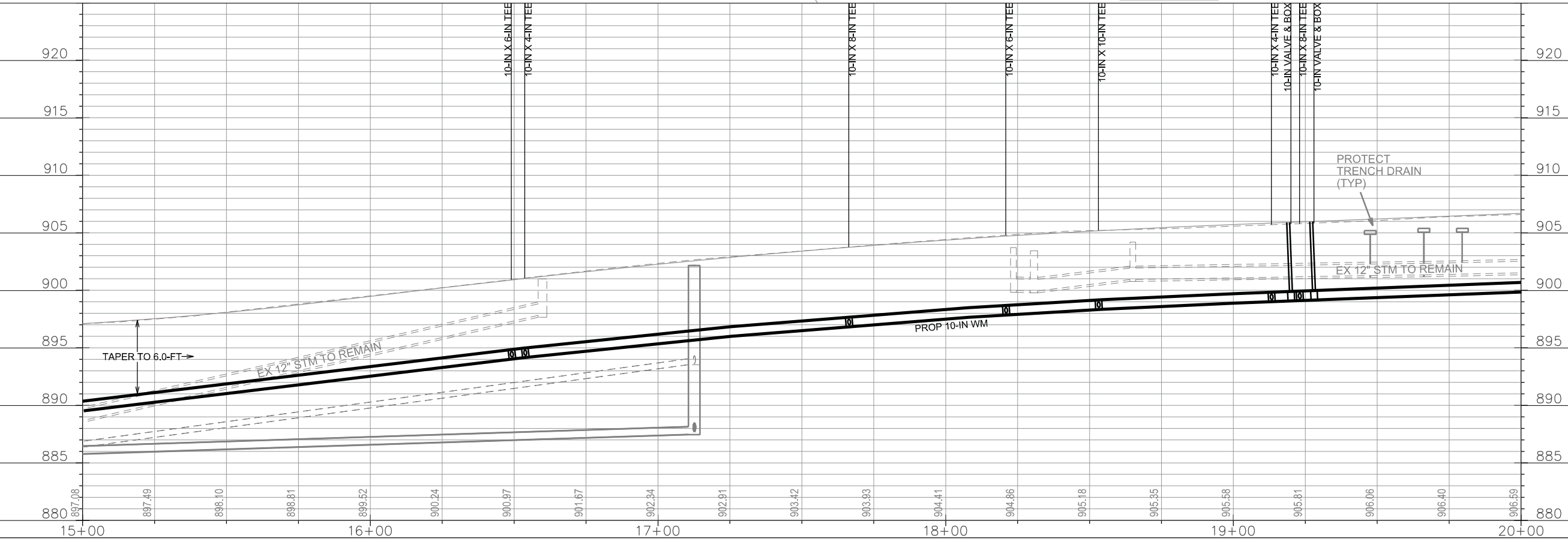
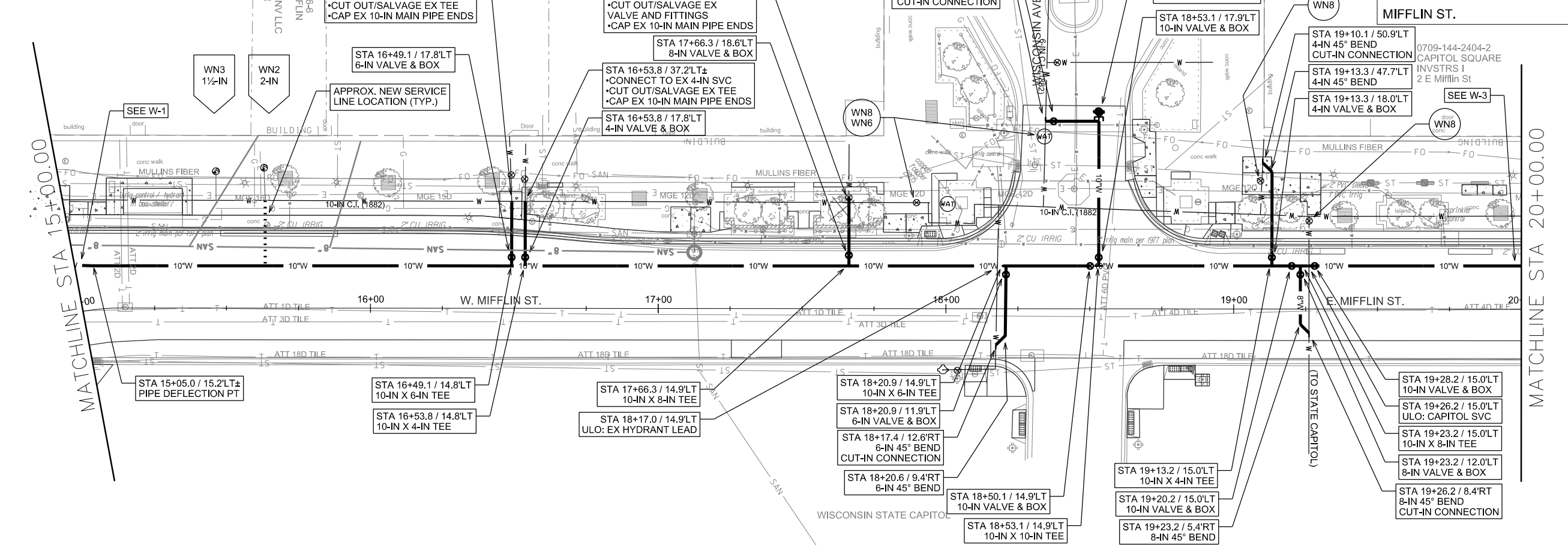
0709-144-2509-0
100 WISCONSIN AVE CDM UNT
OWNER ASSC %APEX PROP MGMT
100 Wisconsin Ave

2016 CAPITOL SQUARE RESURFACING
PROJECT NO. 10903

SHEET NO.
W-2

WATER PLAN AND PROFILE

CITY OF MADISON
Addendum 1

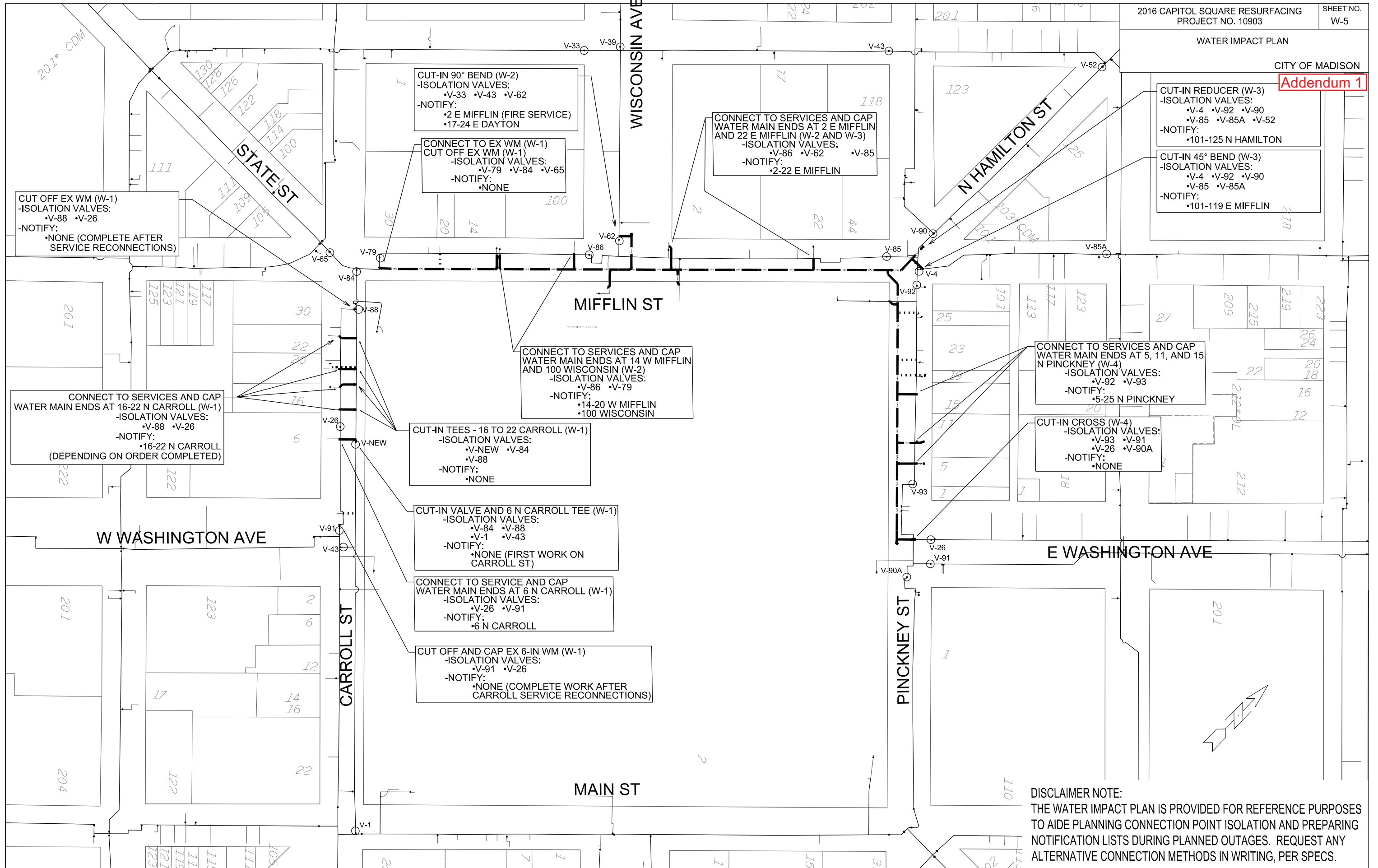


PLOT SCALE: _____
PLOT NAME: _____
REV. DATE: _____
ORIGINATOR: CITY OF MADISON, STREETS DIVISION

WATER IMPACT PLAN

CITY OF MADISON

Addendum 1



CUT OFF EX WM (W-1)
-ISOLATION VALVES:
•V-88 •V-26
-NOTIFY:
•NONE (COMPLETE AFTER
SERVICE RECONNECTIONS)

CUT-IN 90° BEND (W-2)
-ISOLATION VALVES:
•V-33 •V-43 •V-62
-NOTIFY:
•2 E MIFFLIN (FIRE SERVICE)
•17-24 E DAYTON

CONNECT TO EX WM (W-1)
CUT OFF EX WM (W-1)
-ISOLATION VALVES:
•V-79 •V-84 •V-65
-NOTIFY:
•NONE

CONNECT TO SERVICES AND CAP
WATER MAIN ENDS AT 2 E MIFFLIN
AND 22 E MIFFLIN (W-2 AND W-3)
-ISOLATION VALVES:
•V-86 •V-62 •V-85
-NOTIFY:
•2-22 E MIFFLIN

CUT-IN REDUCER (W-3)
-ISOLATION VALVES:
•V-4 •V-92 •V-90
•V-85 •V-85A •V-52
-NOTIFY:
•101-125 N HAMILTON

CUT-IN 45° BEND (W-3)
-ISOLATION VALVES:
•V-4 •V-92 •V-90
•V-85 •V-85A
-NOTIFY:
•101-119 E MIFFLIN

CONNECT TO SERVICES AND CAP
WATER MAIN ENDS AT 14 W MIFFLIN
AND 100 WISCONSIN (W-2)
-ISOLATION VALVES:
•V-86 •V-79
-NOTIFY:
•14-20 W MIFFLIN
•100 WISCONSIN

CONNECT TO SERVICES AND CAP
WATER MAIN ENDS AT 16-22 N CARROLL (W-1)
-ISOLATION VALVES:
•V-88 •V-26
-NOTIFY:
•16-22 N CARROLL
(DEPENDING ON ORDER COMPLETED)

CUT-IN TEES - 16 TO 22 CARROLL (W-1)
-ISOLATION VALVES:
•V-NEW •V-84
•V-88
-NOTIFY:
•NONE

CONNECT TO SERVICES AND CAP
WATER MAIN ENDS AT 5, 11, AND 15
N PINCKNEY (W-4)
-ISOLATION VALVES:
•V-92 •V-93
-NOTIFY:
•5-25 N PINCKNEY

CUT-IN CROSS (W-4)
-ISOLATION VALVES:
•V-93 •V-91
•V-26 •V-90A
-NOTIFY:
•NONE

CUT-IN VALVE AND 6 N CARROLL TEE (W-1)
-ISOLATION VALVES:
•V-84 •V-88
•V-1 •V-43
-NOTIFY:
•NONE (FIRST WORK ON
CARROLL ST)

CONNECT TO SERVICE AND CAP
WATER MAIN ENDS AT 6 N CARROLL (W-1)
-ISOLATION VALVES:
•V-26 •V-91
-NOTIFY:
•6 N CARROLL

CUT OFF AND CAP EX 6-IN WM (W-1)
-ISOLATION VALVES:
•V-91 •V-26
-NOTIFY:
•NONE (COMPLETE WORK AFTER
CARROLL SERVICE RECONNECTIONS)

DISCLAIMER NOTE:
THE WATER IMPACT PLAN IS PROVIDED FOR REFERENCE PURPOSES
TO AIDE PLANNING CONNECTION POINT ISOLATION AND PREPARING
NOTIFICATION LISTS DURING PLANNED OUTAGES. REQUEST ANY
ALTERNATIVE CONNECTION METHODS IN WRITING, PER SPECS.

PLOT SCALE:

PLOT NAME:

REV. DATE:

ORIGINATOR: CITY OF MADISON, STREETS DIVISION

CONSTRUCTION NOTES:

1. CONSTRUCT NEW WATER MAIN 6.0' BELOW FINISHED GRADE, UNLESS OTHERWISE NOTED. INSULATE MAIN WITH POLYSTYRENE BOARD AT UTILITY CROSSINGS OR OTHER AREAS IDENTIFIED BY ENGINEER AS HAVING INADEQUATE COVER.
2. VERIFY SIZE OF EXISTING WATER SERVICES AND RECONNECT SERVICES AS INDICATED.
3. MINIMIZE DISRUPTION OF SERVICE TO EXISTING CUSTOMERS. NOTIFY PER CONTRACT REQUIREMENTS OF ANY PLANNED WATER OUTAGE.
4. THE EXISTING UTILITIES SHOWN ON THIS PLAN REPRESENT THE BEST INFORMATION AVAILABLE TO THE WATER UTILITY AT THE TIME OF PLAN PREPARATION. CONTRACTOR IS RESPONSIBLE FOR HAVING EACH UTILITY LOCATED PRIOR TO COMMENCING WORK.

- WN1 REPLACE THE EXISTING LEAD SERVICE WITH A NEW COPPER SERVICE.
- WN2 EXTEND AND RECONNECT THE EXISTING COPPER SERVICE TO THE NEW WATER MAIN.
- WN3 EXISTING SERVICE TO BE ABANDONED WHEN THE WATER MAIN IS CUT OFF.
- WN4 DISCONNECT FROM THE OLD WATER MAIN AND RECONNECT THE EXISTING COPPER WATER SERVICE LATERAL TO THE NEW WATER MAIN.
- WN5 RELOCATE THE EXISTING FIRE HYDRANT.
- WN6 ABANDON WATER VALVE ACCESS STRUCTURE.
- WN7 FURNISH AND INSTALL THE NEW TOP SECTION FOR THE WATER ACCESS STRUCTURE.
- WN8 ABANDON THE VALVE BOX.
- WN9 FURNISH THE DITCH, COMPACTION, AND ALL MATERIALS AND LABOR FOR THE INSTALLATION OF NEW SERVICE LATERAL.
- WN10 REMOVE AND SALVAGE EXISTING HYDRANT
- WN11 REPLACE THE EXISTING COPPER SERVICE WITH A COPPER SERVICE
- WN20+ SEE WATER IMPACT PLAN FOR CONNECTION POINT ISOLATION AND WATER SHUT-OFF NOTIFICATION INFORMATION.

ESTIMATE OF MATERIALS SUPPLIED BY CONTRACTOR/SALVAGED*:

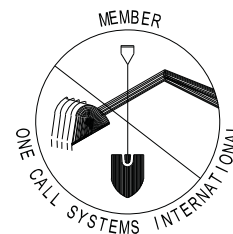
* ESTIMATE OF MATERIALS IS FOR INFORMATION ONLY. ENGINEER DOES NOT GUARANTEE ACCURACY OF MATERIAL TAKE-OFF. COPPER PIPING AND STYROFOAM INSULATION NOT INCLUDED

WATER MAINS	TOTAL
4-IN PIPE (LF)	270
6-IN PIPE (LF)	150
8-IN PIPE (LF)	100
10-IN PIPE (LF)	1360
POLY WRAP	1500
4-IN VALVES & BOXES	8
6-IN VALVES & BOXES	6
8-IN VALVES & BOXES	4
10-IN VALVES & BOXES	11
4-IN - 22.5° BENDS	2
4-IN - 45° BENDS	6
6-IN - 45° BENDS	4
8-IN - 45° BENDS	2
10-IN - 45° BENDS	4
6-IN - 90° BENDS	1
10-IN X 4-IN TEES	8
10-IN X 6-IN TEES	6
10-IN X 8-IN TEES	4
10-IN X 10-IN TEES	3
10-IN X 8-IN CROSSES	1
6-IN MJ PLUGS	1
10-IN MJ PLUGS	4
6-IN CAPS	8
10-IN CAPS	12
8-IN X 6-IN REDUCER	1
14-IN X 10-IN REDUCER	1
5-IN (TEMP) HYDRANTS	3
SALVAGED MATERIALS	TOTAL
4-IN VALVES	4
6-IN VALVES	2
8-IN VALVES	2
10-IN X 4-IN TEES	3
10-IN X 6-IN TEES	1
4-IN PIPE	100

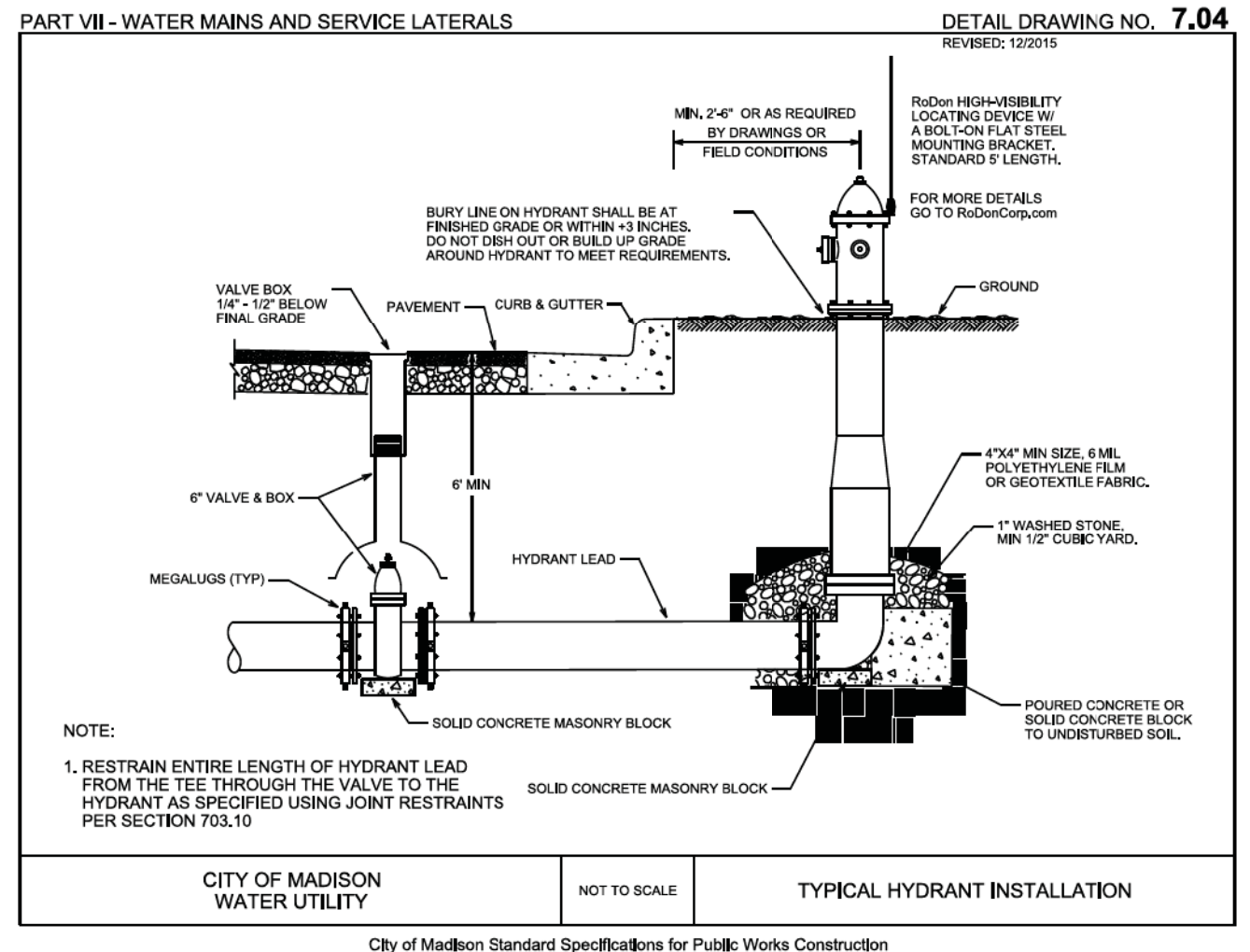
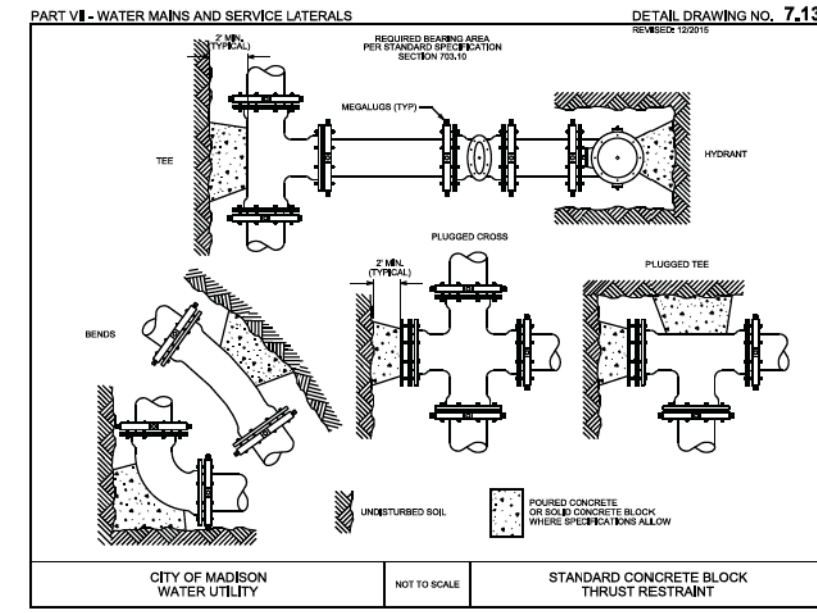
TO OBTAIN LOCATION OF PARTICIPANTS' UNDERGROUND FACILITIES BEFORE YOU DIG IN WISCONSIN

CALL DIGGERS HOTLINE
TOLL FREE
811 OR 1-800-242-8511
FAX-A-LOCATE 1-800-338-3860
TDD (FOR HEARING IMPAIRED) 1-800-542-2289

WIS. STATUTE 182.0175 (1974)
REQUIRES MIN. OF 3 WORK DAYS
NOTICE BEFORE YOU EXCAVATE.



DISCLAIMER NOTE:
UTILITY LOCATIONS SHOWN ARE APPROXIMATE ONLY. IT SHALL BE THE CONTRACTOR'S RESPONSIBILITY TO DETERMINE THE EXACT HORIZONTAL AND VERTICAL LOCATION OF ALL EXISTING UNDERGROUND AND OVERHEAD UTILITIES PRIOR TO COMMENCING WORK.



PLOT SCALE: _____

PLOT NAME: _____

REV. DATE: _____

ORIGINATOR: CITY OF MADISON, STREETS DIVISION