

MADISON WATER UTILITY

MADISON, WISCONSIN

CONTRACT NO. 7821, PROJECT NO. 10445

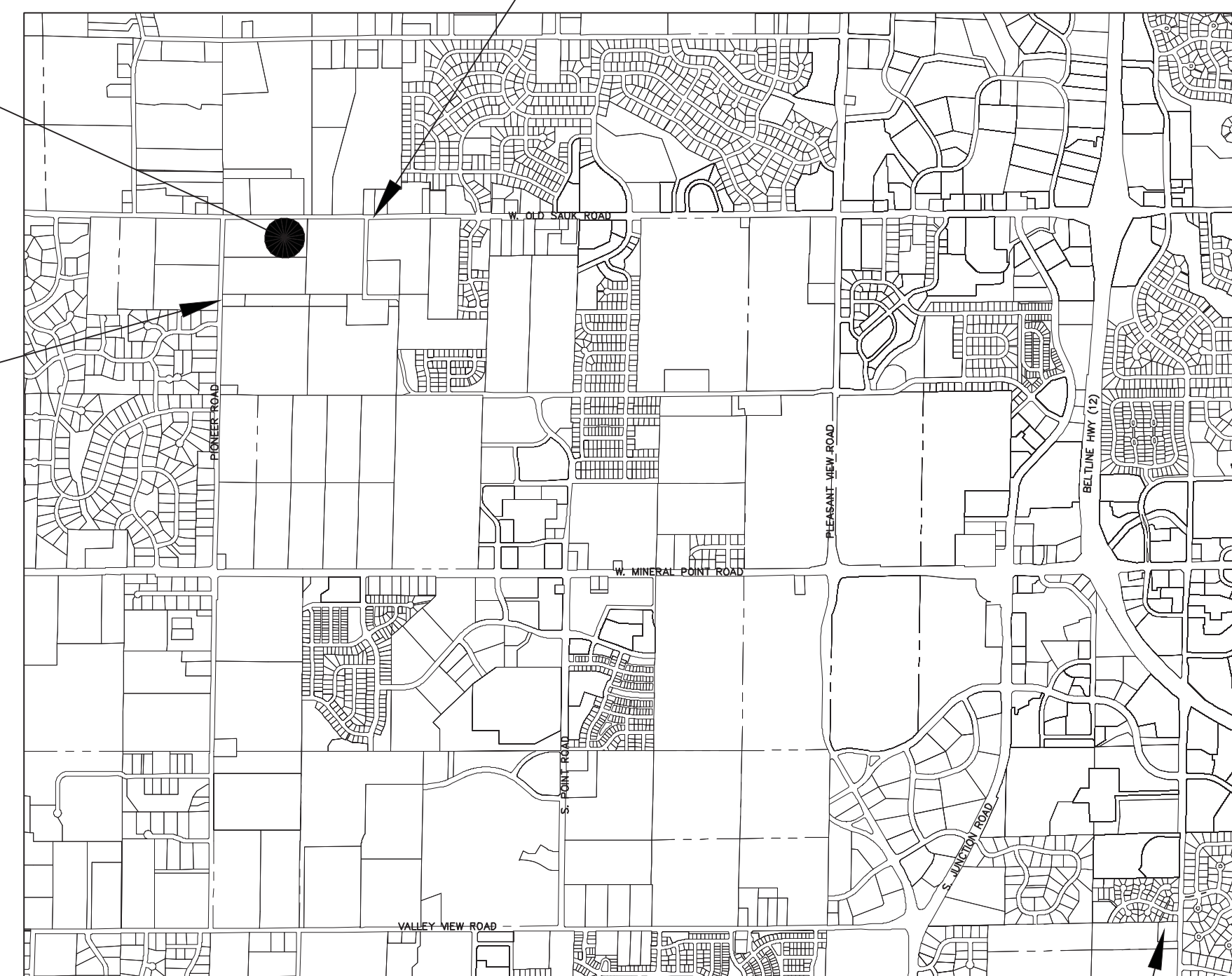
BLACKHAWK WATER TOWER



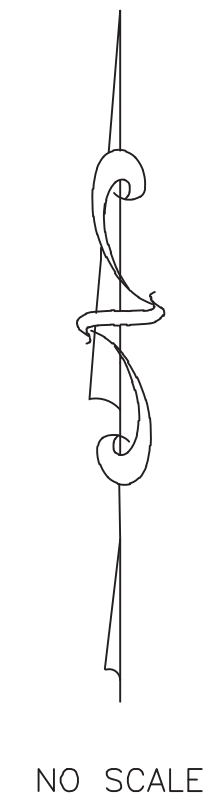
PROJECT LOCATION:
10451 OLD SAUK ROAD

CONSTRUCTION TRAFFIC TO
USE OLD SAUK ROAD
(FROM EAST)

NO CONSTRUCTION TRAFFIC
ON PIONEER ROAD



VICINITY MAP



EXISTING ELEVATED TANK 126
910 S. HIGH POINT ROAD.
(SEE SHT. M-6 FOR NEW
ALTITUDE VALVE INSTALLATION
& OUTLET PIPE MODIFICATIONS)

DRAWING INDEX					
TITLE	GENERAL	CIVIL	STRUCTURAL	MECHANICAL	ELECTRICAL
LEGEND, ABBREVIATIONS, INDEX, GENERAL NOTES AND BENCHMARK	G-1				
OVERALL SITE PLAN		C-1			
SITE AND UTILITY		C-2			
GRADING PLAN		C-3			
LANDSCAPE AND EROSION CONTROL PLAN		C-4			
SITE DETAILS		C-5 - C-6			
COMPOSITE TANK FLOOR PLAN				M-1	
COMPOSITE TANK DETAILS				M-2	
COMPOSITE TANK SECTION				M-3	
PLUMBING DRAIN SCHEMATIC				M-4	
WATER SUPPLY SCHEMATIC				M-5	
DETAILS				M-6	
ELECTRICAL SITE PLAN					E-1
ELECTRICAL PLAN AND DETAILS					E-2
ELECTRICAL SYMBOL LIST					E-3

EXISTING UTILITIES:

WHERE THE DRAWINGS INCLUDE INFORMATION PERTAINING TO THE LOCATION OF UNDERGROUND UTILITY FACILITIES, SUCH INFORMATION REPRESENTS ONLY THE OPINION OF THE ENGINEER AS TO THE LOCATION OF SUCH UTILITIES. THE INFORMATION IS INCLUDED ONLY FOR THE CONVENIENCE OF THE CONTRACTOR. THE UTILITY LOCATIONS WERE DETERMINED FROM THE BEST AVAILABLE RECORDS. THE ENGINEER AND OWNER ASSUME NO RESPONSIBILITY WHATSOEVER WITH RESPECT TO THE SUFFICIENCY OR ACCURACY OF THE INFORMATION SHOWN ON THE DRAWINGS REGARDING THE LOCATION OF UNDERGROUND UTILITY FACILITIES OR THE MANNER IN WHICH THEY ARE TO BE REMOVED OR ADJUSTED. IT SHALL BE THE CONTRACTOR'S RESPONSIBILITY TO DETERMINE THE ACTUAL LOCATION OF ALL SUCH FACILITIES. THE CONTRACTOR SHALL OBTAIN FROM THE RESPECTIVE UTILITY COMPANIES DETAILED INFORMATION REGARDING THE LOCATION OF THE UTILITY FACILITIES AND THE WORKING SCHEDULES OF THE UTILITY COMPANIES FOR REMOVING OR ADJUSTING THE FACILITIES.



TO OBTAIN LOCATION OF PARTICIPANT'S UNDERGROUND FACILITIES BEFORE YOU DIG IN WISCONSIN

CALL DIGGERS HOTLINE
1-800-242-8511
TOLL FREE

WIS. STATUTE 182.0175 (1974)
REQUIRES MIN. OF 3 WORK DAYS
NOTICE BEFORE YOU EXCAVATE.

COPYRIGHT © 2016, BY BAXTER & WOODMAN, INC.
ALL RIGHTS RESERVED. NO PART OF THESE DRAWINGS
MAY BE REPRODUCED, OR OTHERWISE REVISED WITHOUT
WRITTEN PERMISSION OF BAXTER & WOODMAN, INC.

WISCONSIN
GERALD D. GROTH
E-23728
MADISON
WIS.
Gerald D. Groth
PROJECT MANAGER

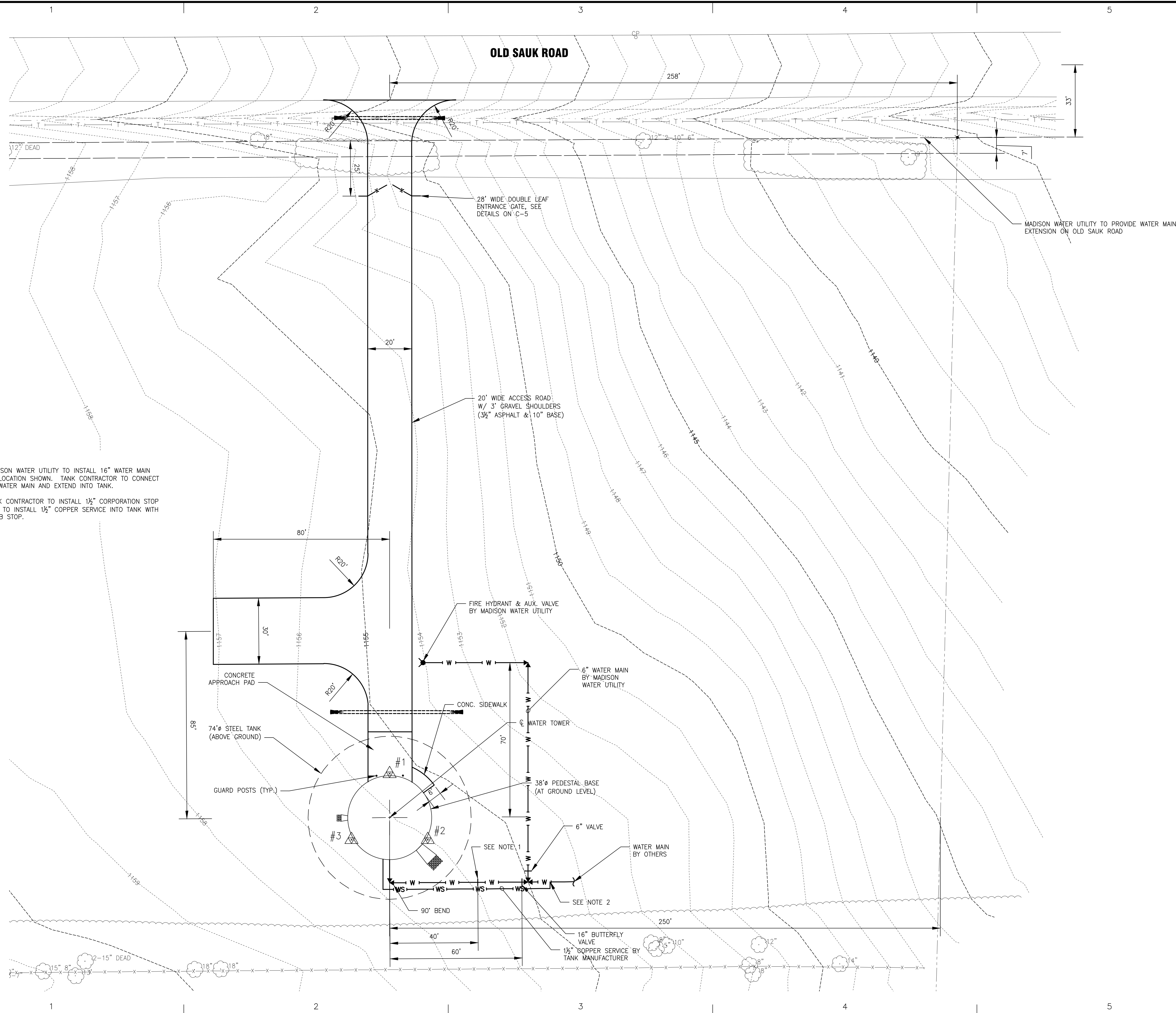
BAXTER & WOODMAN
Consulting Engineers

WWW.BAXTERWOODMAN.COM

BAXTER & WOODMAN, INC.
STATE OF WISCONSIN - PROFESSIONAL DESIGN FIRM
LICENSE NO. - 484-011 - EXPIRES 1/31/2018

PROJECT NO.: 150826.40 DATE: 12/27/16

I:\BURLINGTON\MADUD\150826-BLACKHAWK TOWER\CADD\DRAWINGS\DWG\40 - CURRENT\150826 TOPO C3D14.DWG SITE AND UTILITY
 Plotted: 12/27/2016 11:36 AM By: 421TLB
 Copyright © 2016, By Baxter & Woodman, Inc.
 State of Wisconsin - Professional Design Firm
 License No. - 484-011 - Expires 1-31-18



NOTES:

- MADISON WATER UTILITY TO INSTALL 16" WATER MAIN TO LOCATION SHOWN. TANK CONTRACTOR TO CONNECT TO WATER MAIN AND EXTEND INTO TANK.
- TANK CONTRACTOR TO INSTALL 1/2" CORPORATION STOP AND TO INSTALL 1/2" COPPER SERVICE INTO TANK WITH CURB STOP.



CONSULTANTS

NO.	DATE	DESCRIPTION

* - REFER TO EQUIPMENT MANUFACTURER'S SHOP DRAWING



PLAN SHEET DESIGNATION

- COVER
- GEN - GENERAL
- HMZ - HAZARDOUS MATERIALS
- CIV - CIVIL
- LAND - LANDSCAPE
- STR - STRUCTURAL
- ARCH - ARCHITECTURAL
- INST - INSTRUMENTATION
- EQUIP - EQUIPMENT
- FIRE - FIRE PROTECTION
- PLUMB - PLUMBING
- MECH - MECHANICAL
- ELECT - ELECTRICAL
- TELECOM - TELECOMMUNICATIONS
- RES - RESOURCE

PROJECT NO: 150826.40

SCALE: 1" = 20'
 DRAWING DATE: 12/27/16
 DESIGNED BY: GDG
 DRAWN BY: TLB
 CHECKED BY: GDG

CLIENT

**MADISON WATER UTILITY
 MADISON, WISCONSIN**

**CONTRACT NO. 7821
 PROJECT NO. 10445**

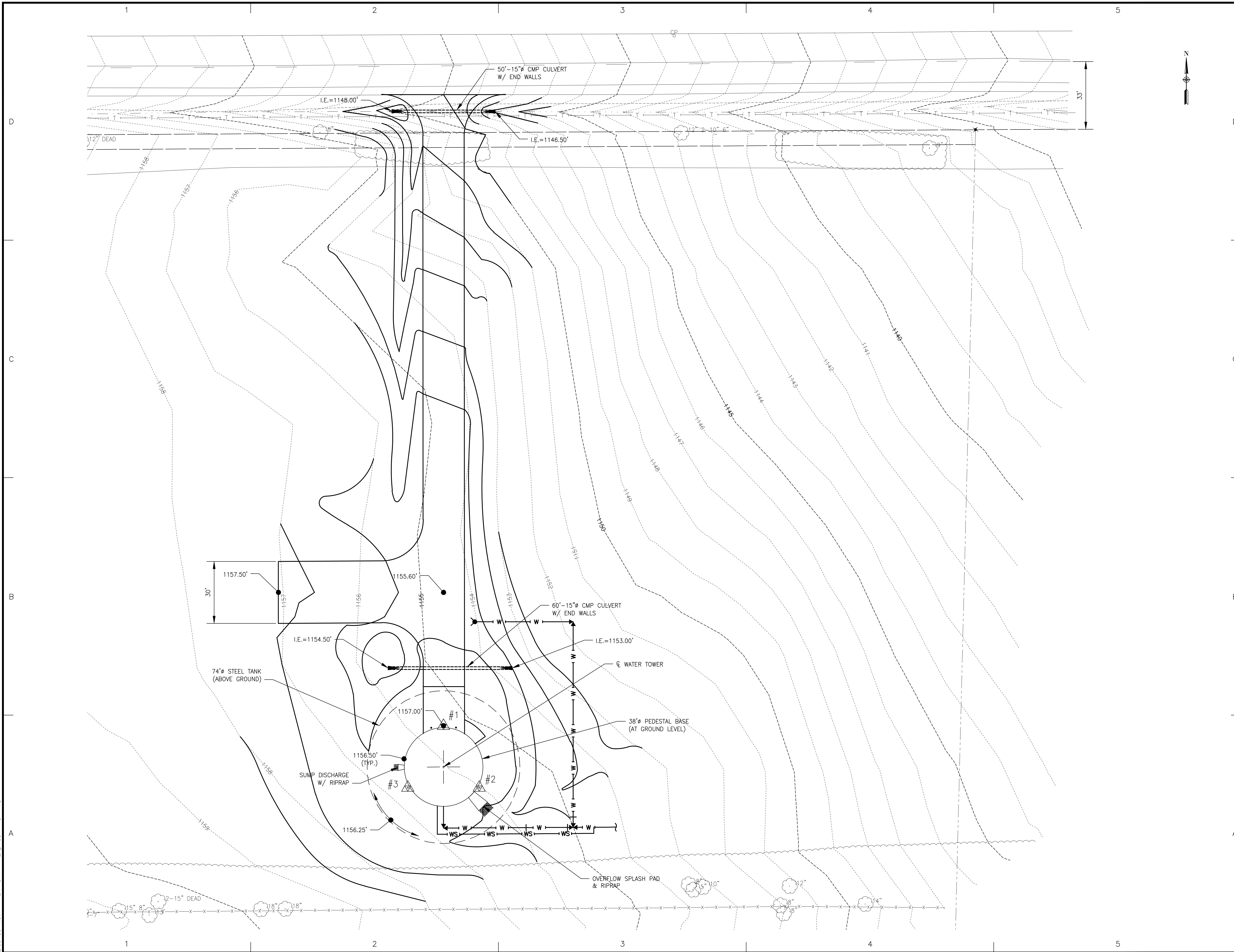
BLACKHAWK WATER TOWER

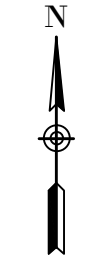
SHEET TITLE

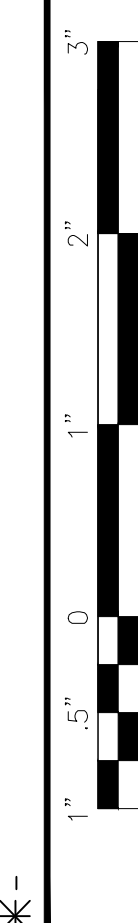
**SITE AND UTILITY
 PLAN**

C-2

I:\BURLINGTON\MADUD\150826-BLACKHAWK TOWER\CADD\DRAWINGS\DWG\40 - CURRENT\150826 TOPO C3D14.DWG GRADING PLAN
 Plotted: 12/27/2016 11:37 AM By: 421TLB
 Copyright © 2016, By Baxter & Woodman, Inc.
 State of Wisconsin - Professional Design Firm
 License No. - 484-011 - Expires 1-31-18







* - REFER TO EQUIPMENT MANUFACTURER'S SHOP DRAWING

NO.	DATE	DESCRIPTION

CONSULTANTS

PLAN SHEET DESIGNATION

COVER

- G = GENERAL
- H = HAZARDOUS MATERIALS
- C = CIVIL
- L = LANDSCAPE
- S = STRUCTURAL
- A = ARCHITECTURAL
- I = INSTRUMENTATION
- EQ = EQUIPMENT
- FP = FIRE PROTECTION
- P = PLUMBING
- M = MECHANICAL
- E = ELECTRICAL
- T = TELECOMMUNICATIONS
- R = RESOURCE

PROJECT NO: 150826.40

SCALE: 1" = 20'

DRAWING DATE: 12/27/16

DESIGNED BY: GDG

DRAWN BY: TLB

CHECKED BY: GDG

CLIENT

**MADISON WATER UTILITY
MADISON, WISCONSIN**

**CONTRACT NO. 7821
PROJECT NO. 10445**

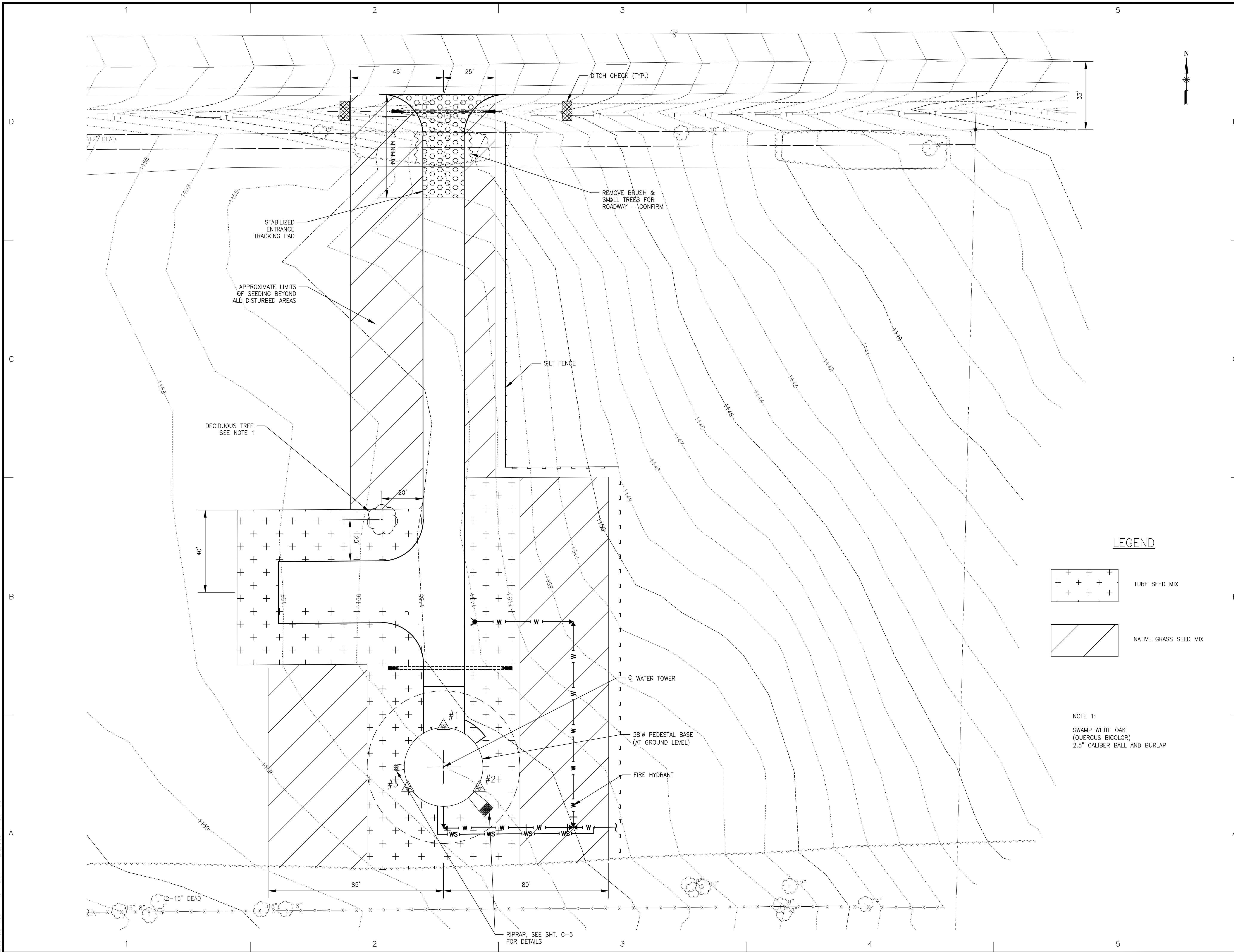
BLACKHAWK WATER TOWER

SHEET TITLE

GRADING PLAN

C-3

I:\BURLINGTON\MADUD\150826-BLACKHAWK TOWER\CADD\DRAWINGS\DWG\40 - CURRENT\150826 TOPO C3D14.DWG LANDSCAPE PLAN
 Plotted: 12/27/2016 11:30 AM By: 421TLB
 Copyright © 2016, By: Baxter & Woodman, Inc.
 State of Wisconsin - Professional Design Firm
 License No. - 484-011 - Expires 1-31-18



BAXTER & WOODMAN
 Consulting Engineers

CONSULTANTS

NO.	DATE	DESCRIPTION

REFER TO EQUIPMENT MANUFACTURER'S SHOP DRAWING

1" = 0.5" 0 1" 2" 3"

PLAN SHEET DESIGNATION

COVER
 G - GENERAL
 H - HAZARDOUS MATERIALS
 C - CIVIL
 L - LANDSCAPE
 S - STRUCTURAL
 A - ARCHITECTURAL
 I - INSTRUMENTATION
 E - EQUIPMENT
 F - FIRE PROTECTION
 P - PLUMBING
 M - MECHANICAL
 EL - ELECTRICAL
 T - TELECOMMUNICATIONS
 R - RESOURCE

PROJECT NO: 150826.40
 SCALE: 1" = 20'
 DRAWING DATE: 12/27/16
 DESIGNED BY: GDG
 DRAWN BY: TLB
 CHECKED BY: GDG

CLIENT

**MADISON WATER UTILITY
 MADISON, WISCONSIN**

**CONTRACT NO. 7821
 PROJECT NO. 10445**

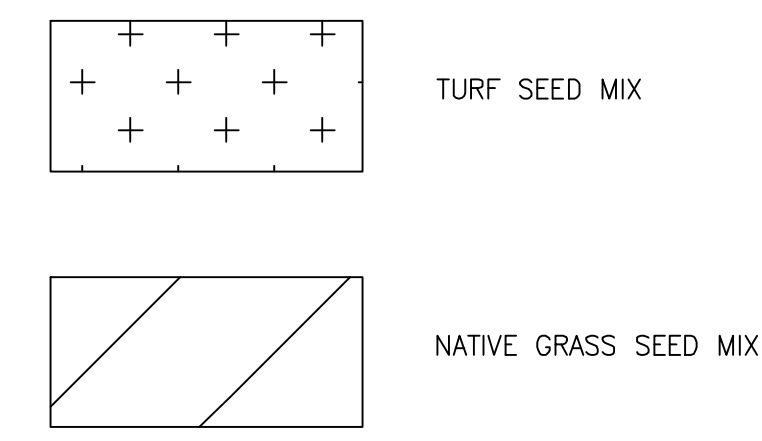
BLACKHAWK WATER TOWER

SHEET TITLE

**LANDSCAPE AND
 EROSION CONTROL PLAN**

C-4

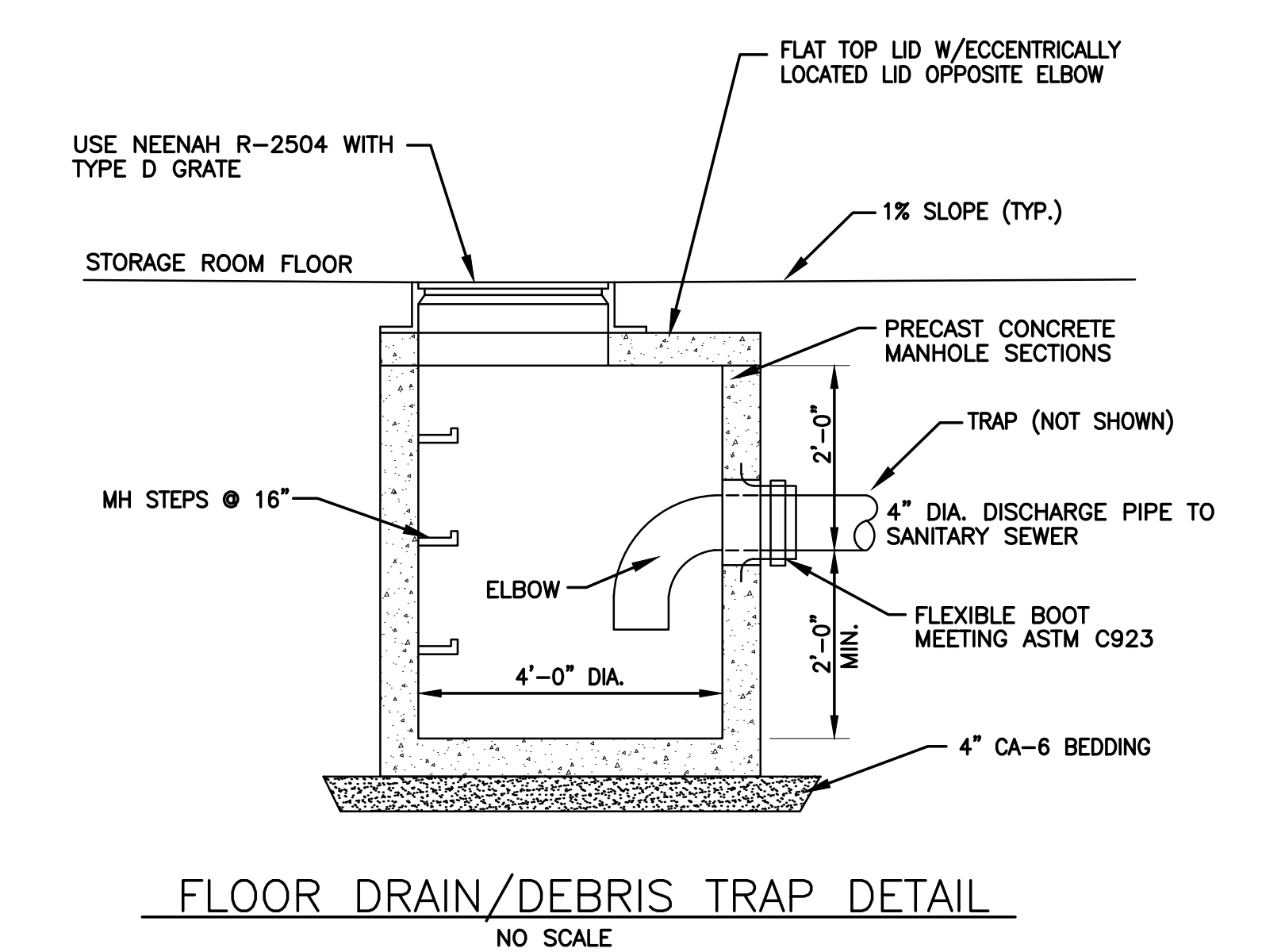
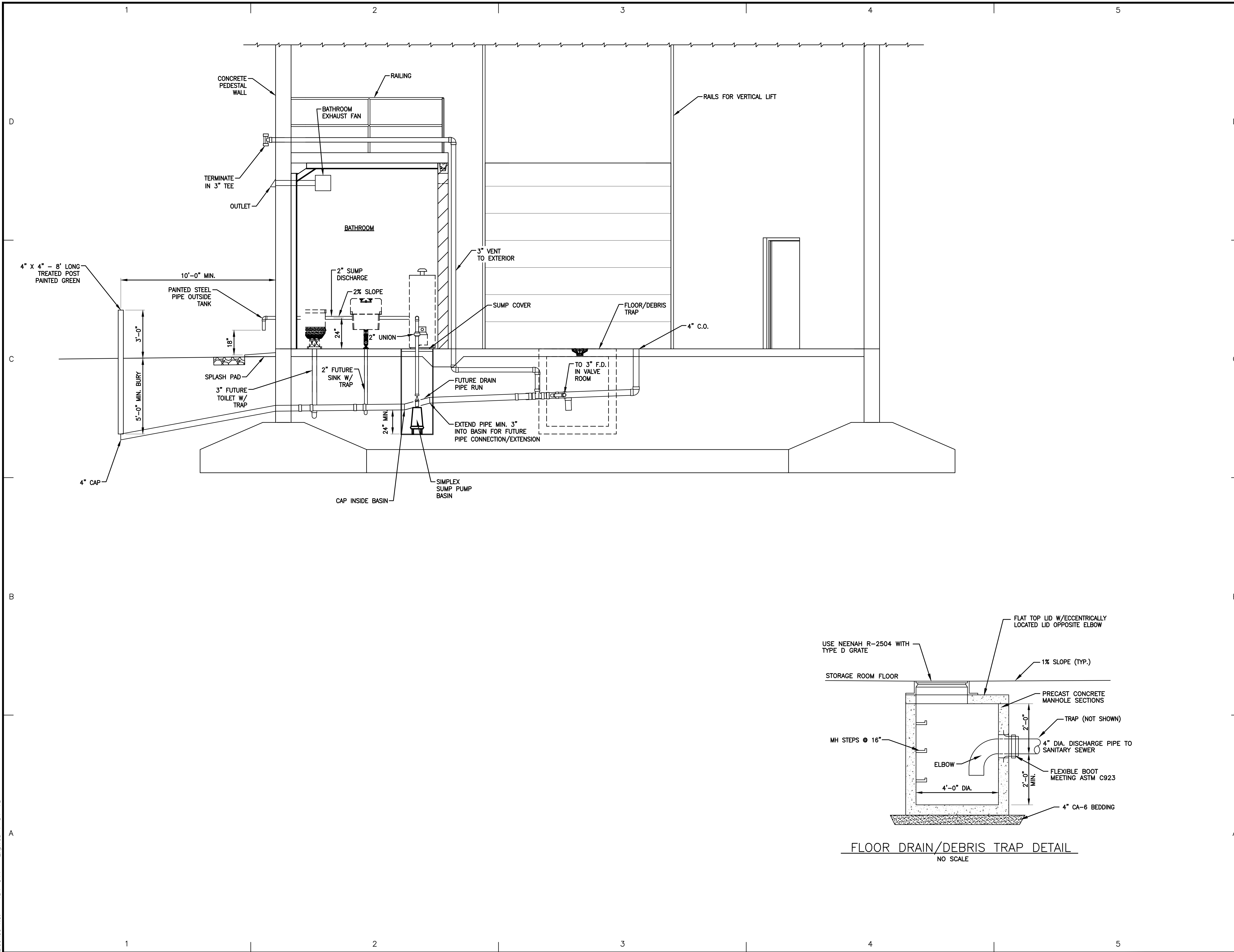
LEGEND



NOTE 1:
 SWAMP WHITE OAK
 (QUERCUS BICOLOR)
 2.5" CALIBER BALL AND BURLAP

RIPRAP, SEE SHT. C-5
 FOR DETAILS

I:\BURLINGTON\MADUD\150826--BLACKHAWK TOWER\CADD\DRAWINGS\DWG\BLACKHAWK TOWER\SHEETS\MECHANICAL\M-4 PLUMBING DRAIN SCHEMATIC.DWG M-4 PLUMBING DRAIN SCHEMATIC
 Plotted: 12/27/2016 10:40 AM By: 421TLB
 Copyright © 2016, By Baxter & Woodman, Inc.
 State of Wisconsin - Professional Design Firm
 License No. - 484-0111 - Expires 1-31-18



CONSULTANTS

NO.	DATE	DESCRIPTION

REFER TO EQUIPMENT MANUFACTURER'S SHOP DRAWING

PLAN SHEET DESIGNATION

COVER = GENERAL
 H.G. = HAZARDOUS MATERIALS
 C.O. = CIVIL
 L. = LANDSCAPE
 S. = STRUCTURAL
 A. = ARCHITECTURAL
 I. = INSTRUMENTATION
 E. = EQUIPMENT
 F.P. = FIRE PROTECTION
 P. = PLUMBING
 M. = MECHANICAL
 E. = ELECTRICAL
 T. = TELECOMMUNICATIONS
 R. = RESOURCE

PROJECT NO: 150826.40

SCALE: AS NOTED
 DRAWING DATE:
 DESIGNED BY: GDG
 DRAWN BY: TLB
 CHECKED BY: GDG

CLIENT

**MADISON WATER UTILITY
MADISON, WISCONSIN**

**CONTRACT NO. 7821
PROJECT NO. 10445**

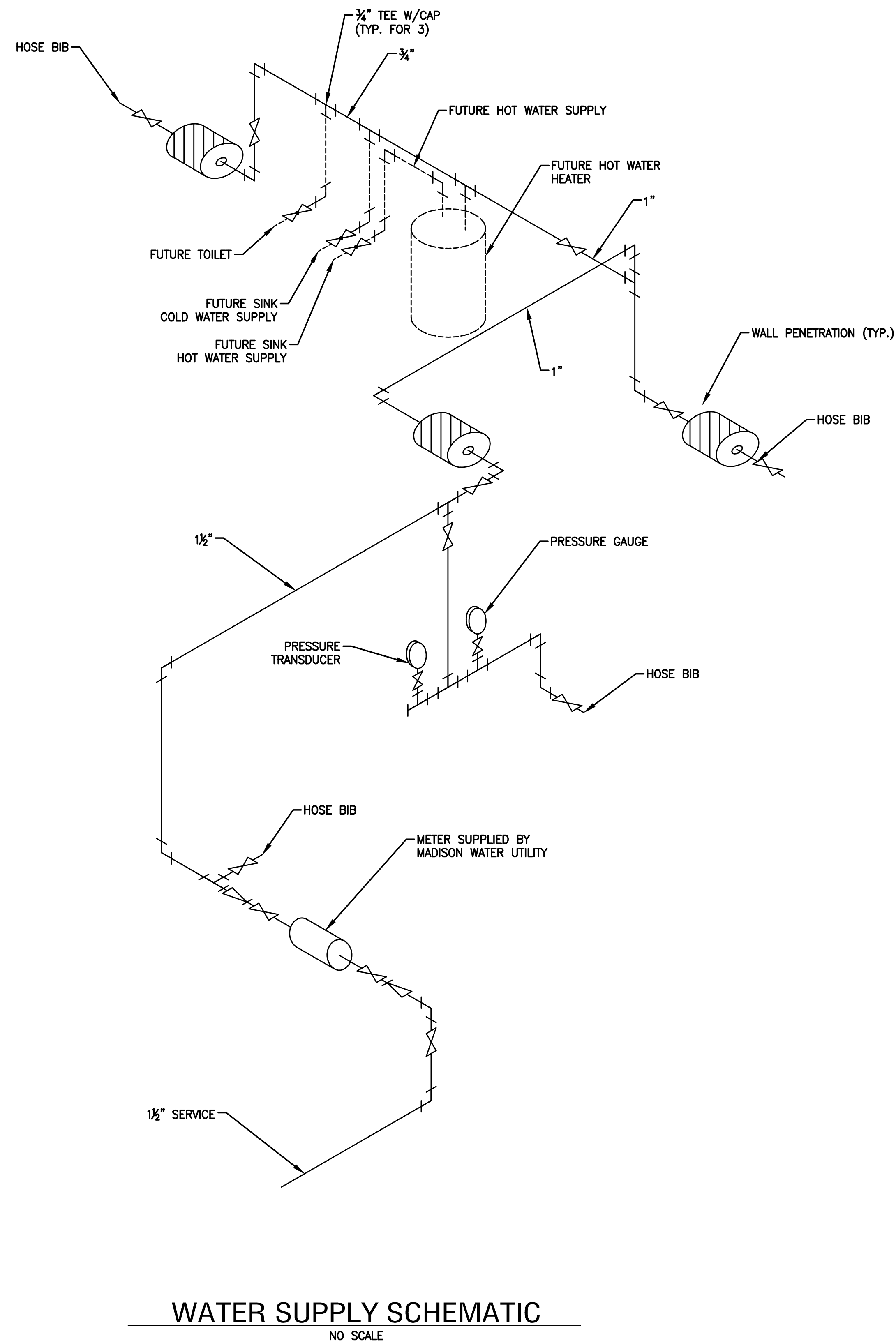
BLACKHAWK WATER TOWER

SHEET TITLE

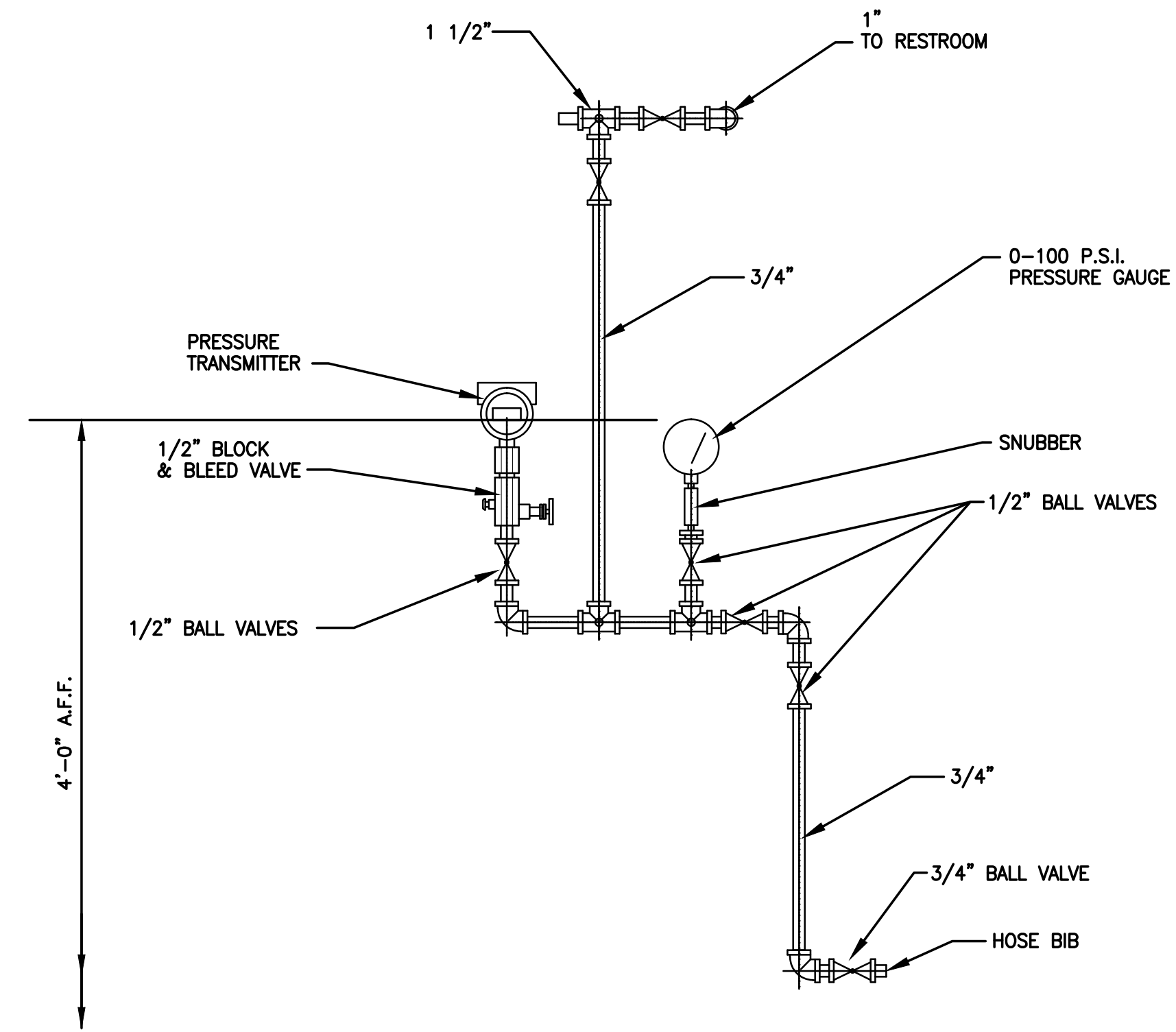
PLUMBING DRAIN SCHEMATIC

M-4

I:\BURLINGTON\MADUD\150826--BLACKHAWK TOWER\CADD\DRAWINGS\DWG\BLACKHAWK TOWER\SHEETS\MECHANICAL\M-5 WATER SUPPLY SCHEMATIC.DWG M-5 WATER SUPPLY SCHEMATIC
 Plotted: 12/27/2016 10:17 AM By: 421TLB
 Copyright © 2016, By Baxter & Woodman, Inc.
 State of Wisconsin - Professional Design Firm
 License No. - 484-0111 - Expires 1-31-18



WATER SUPPLY SCHEMATIC
NO SCALE



**PRESSURE TRANSMITTER
PIPING DETAIL**
NO SCALE

CONSULTANTS

NO.	DATE	DESCRIPTION

REFER TO EQUIPMENT MANUFACTURER'S SHOP DRAWING

PLAN SHEET DESIGNATION

- C O V E R
- G E N E R A L
- H A Z A R D O U S M A T E R I A L S
- C I V I L
- L A N D S C A P E
- S T R U C T U R A L
- A R C H I T E C T U R A L
- I N S T R U M E N T A T I O N
- E Q U I P M E N T
- F I R E P R O T E C T I O N
- P L U M B I N G
- M E C H A N I C A L
- E L E C T R I C A L
- T E L E C O M M U N I C A T I O N S
- R E S O U R C E

PROJECT NO: 150826.40

SCALE: AS NOTED

DRAWING DATE:

DESIGNED BY: GDG

DRAWN BY: TLB

CHECKED BY: GDG

CLIENT

**MADISON WATER UTILITY
MADISON, WISCONSIN**

**CONTRACT NO. 7821
PROJECT NO. 10445**

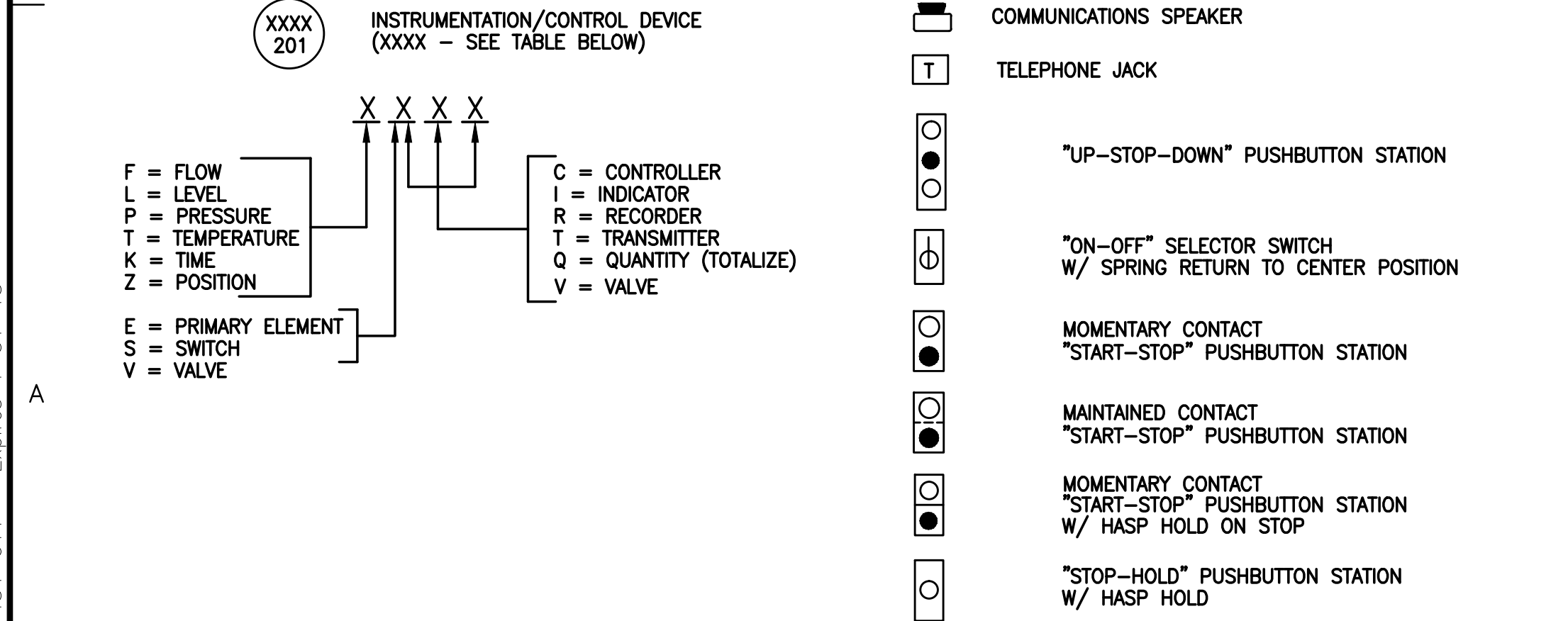
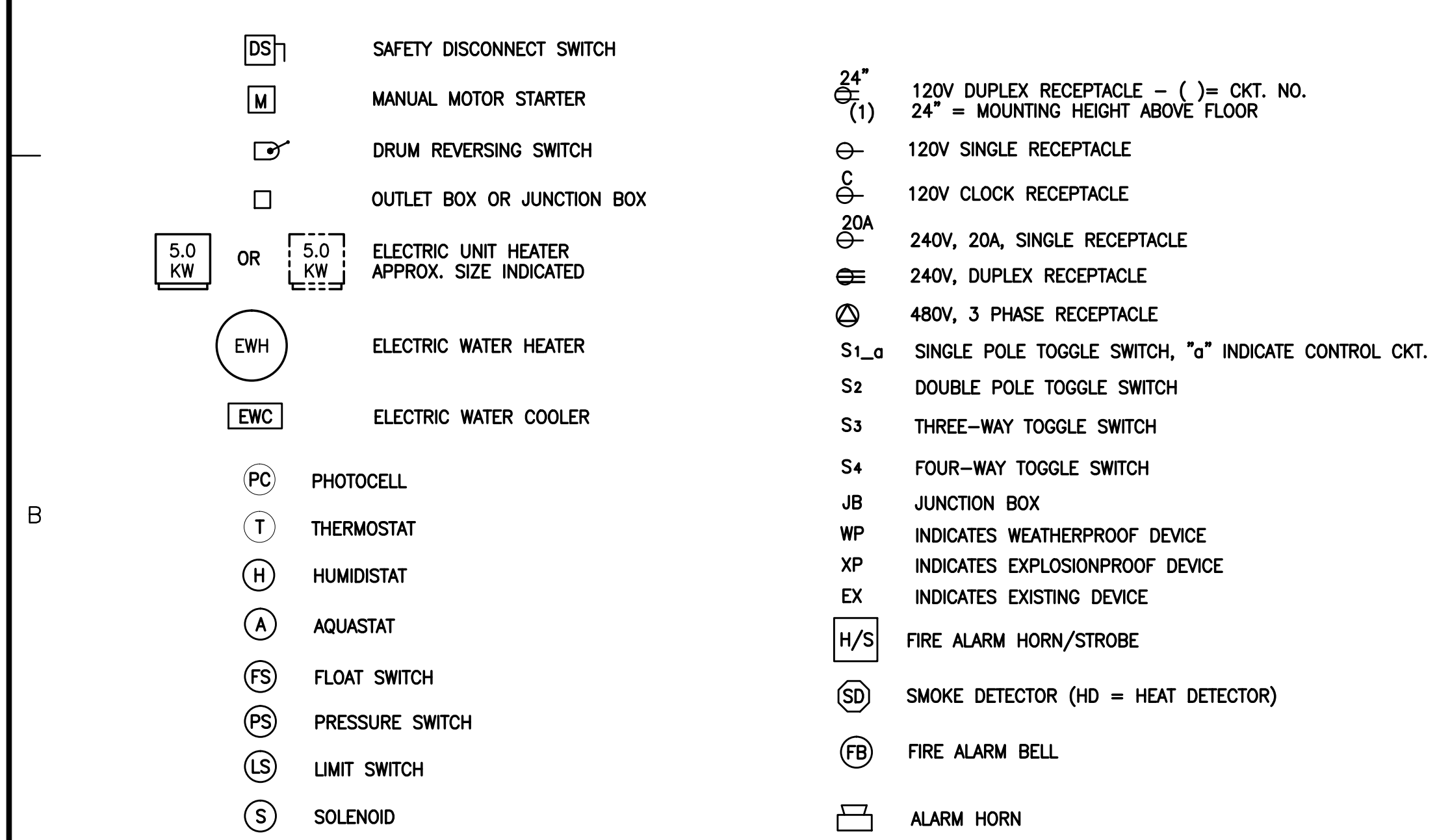
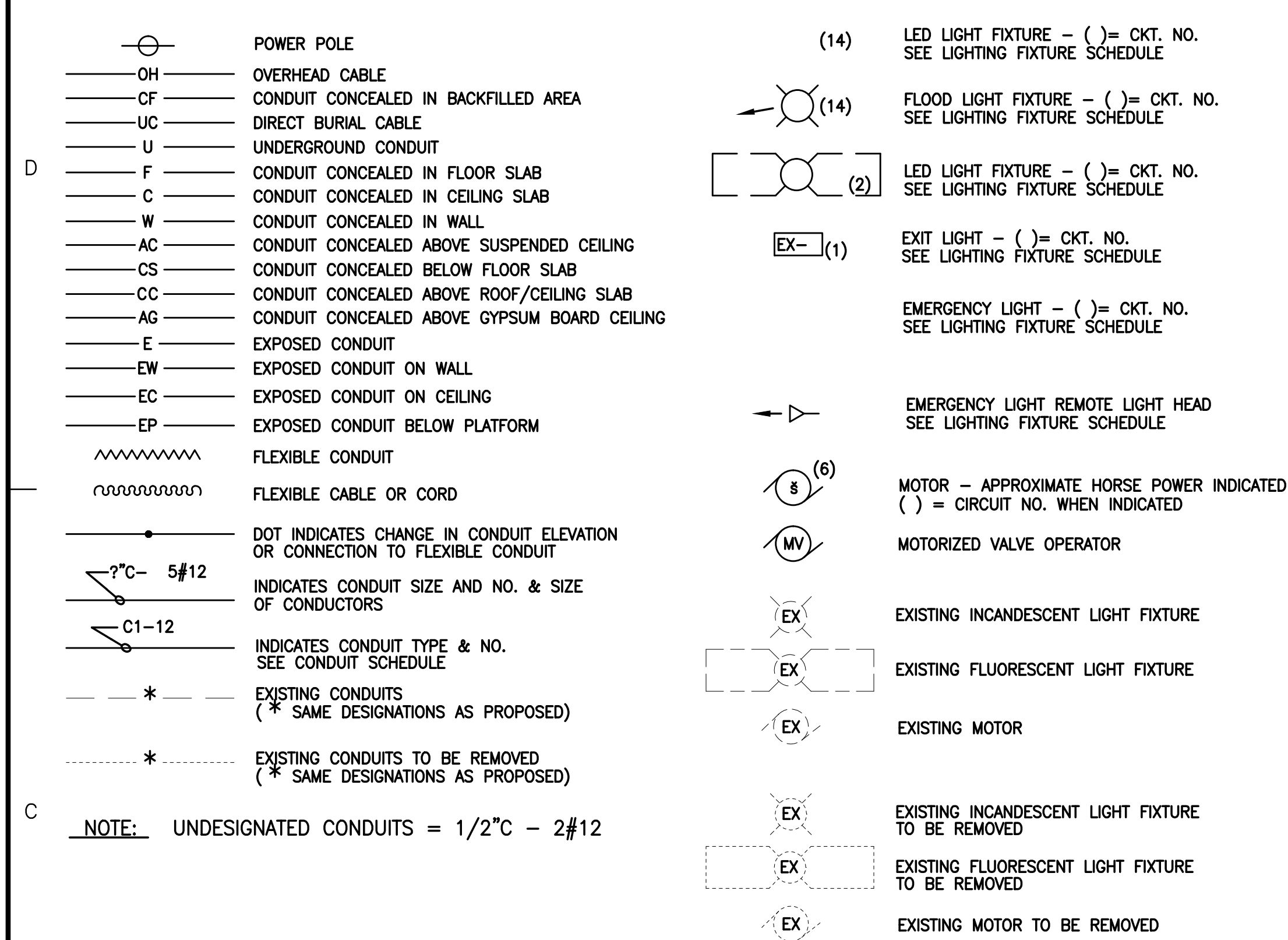
BLACKHAWK WATER TOWER

SHEET TITLE

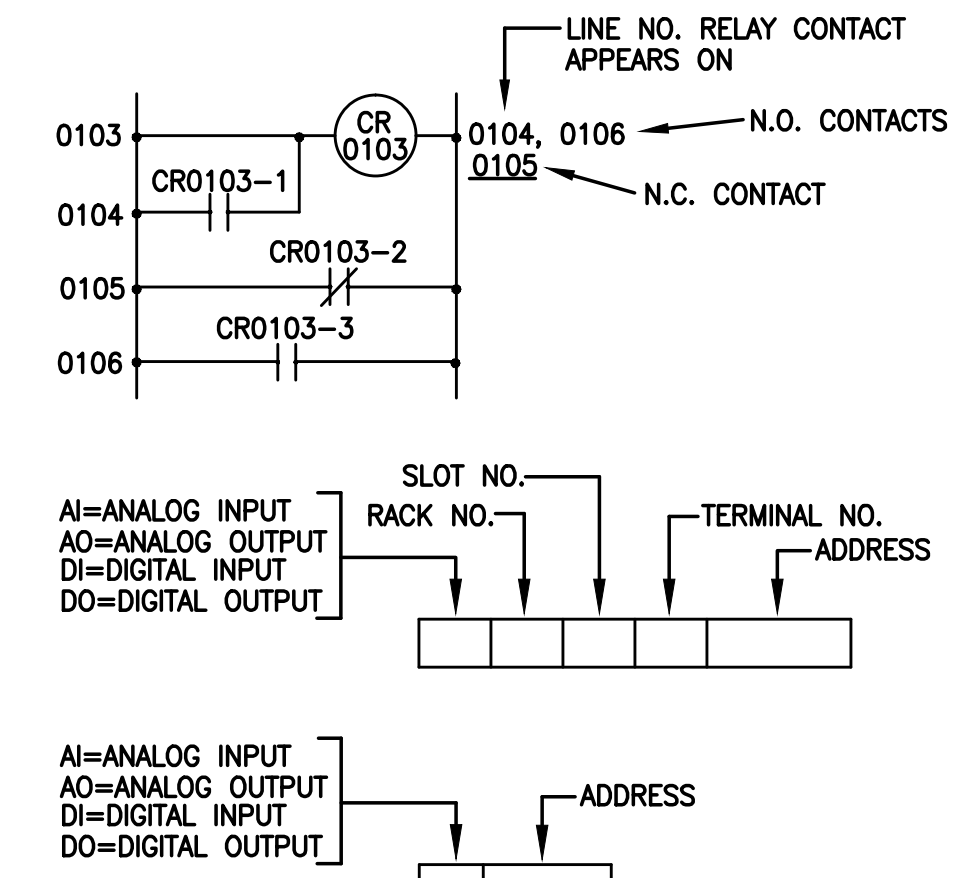
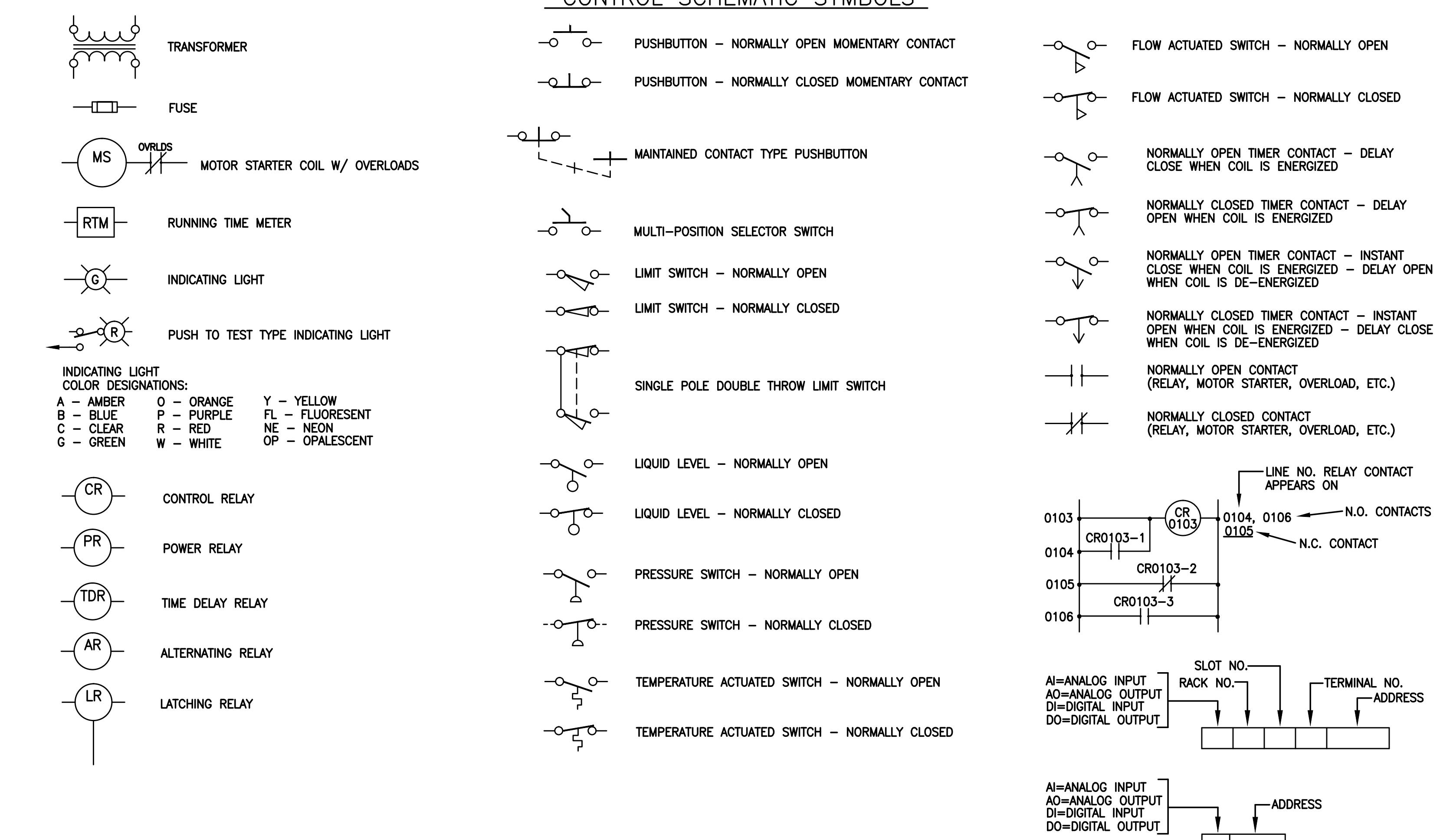
WATER SUPPLY SCHEMATIC

M-5

SITE, BUILDING & STRUCTURE PLAN SYMBOLS

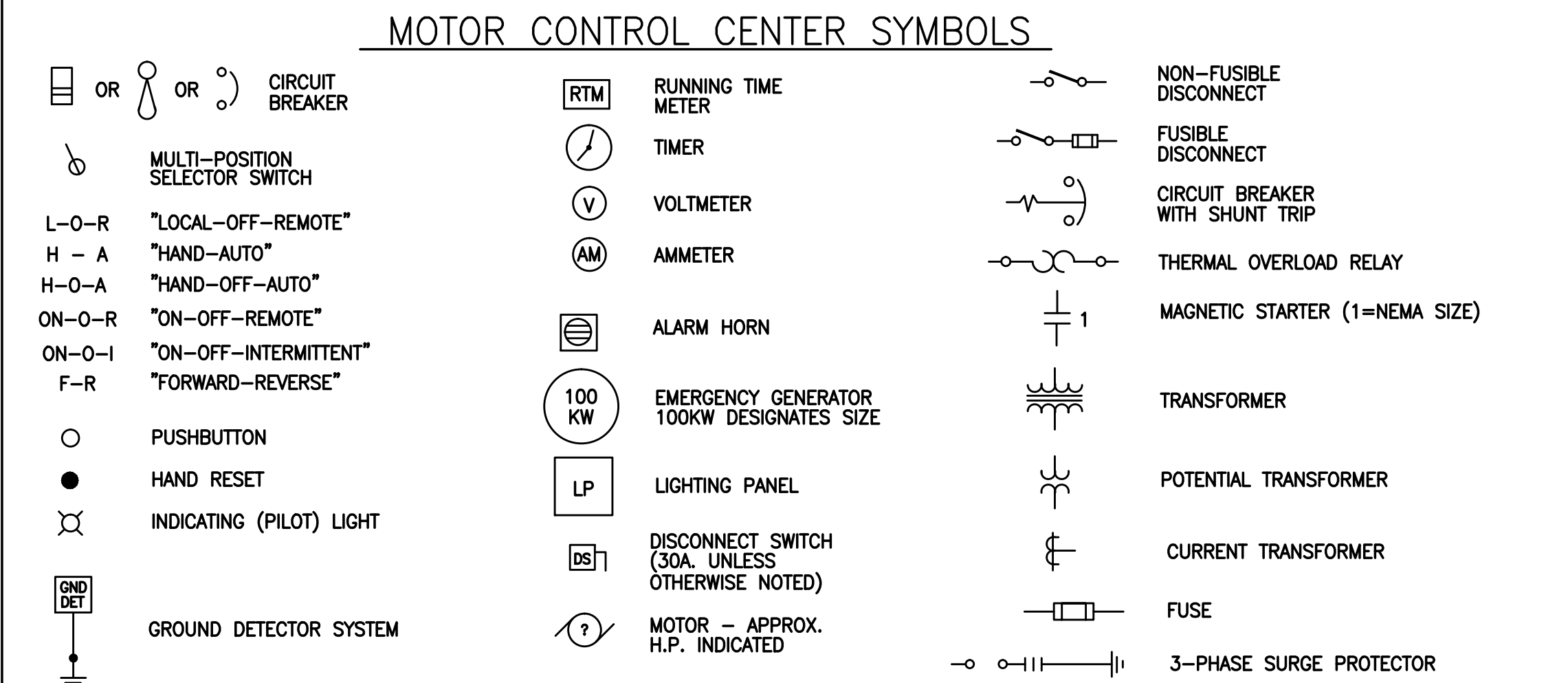


CONTROL SCHEMATIC SYMBOLS



ABBREVIATIONS

A OR AMP.	AMPERE	FSBL	FUSIBLE	PB	PUSHBUTTON
ACK	ACKNOWLEDGE	GFCI	GROUND FAULT CIRCUIT INTERRUPTER	PLC	PROGRAMMABLE LOGIC CONTROLLER
ANN	ANNUNCIATOR	GND	GROUND	PNL	PANEL
ANT.	ANTENNA	H.O.A.	HAND-OFF-AUTO SELECTOR SWITCH	PPM	PARTS PER MILLION
AUTO	AUTOMATIC	HP	HORSE POWER	PR	PROBE
AUX	AUXILIARY	H.W.L. or H.W.L.	HIGH WATER LEVEL	PS	PRESSURE SWITCH
BAT.	BATTERY	ISR	INTRINSICALLY SAFE RELAY	PSI	POUNDS PER SQUARE INCH
BLDG. BRKR.	BUILDING BREAKER	JB or J. BOX	JUNCTION BOX	PT	PRESSURE TRANSDUCER
C	CONDUIT	KW	KILOWATT	PVC	POLYVINYL CHLORIDE
CABLE	CABLE	R.A.S.	RETURN ACTIVATED SLUDGE	RM	ROOM
CAP	CAPACITOR	RTM	RUNNING TIME METER	SH	SHEET
CB	CIRCUIT BREAKER	SHD	SHIELDED	SIL	SILENCE
CCT. or CKT.	CIRCUIT	SIL	SILENCE	SOL	SOLENOID
CH	CHANNEL	SPDT	SINGLE POLE DOUBLE THROW SWITCH	SWR	SWITCHGEAR
COM.	COMMON	SWR	SWITCHGEAR	TDR	TIME DELAY RELAY
COND.	CONDUCTOR	TM	TIMER	TYP.	TYPICAL
CONT.	CONTROL	V	VOLTS	VAC	VOLTS ALTERNATING CURRENT
CPU	CENTRAL PROCESSING UNIT	W.A.S.	WASTE ACTIVATED SLUDGE	WHM	WATT-HOUR METER
CSR	SIGNAL CONDUIT	WM	WEATHERPROOF	WP	WEATHERPROOF
CT	CURRENT SENSING RELAY	X	CLOSE	XFMR	TRANSFORMER
CT	CURRENT TRANSFORMER	N.I.C.	NOT IN CONTRACT	XMTR	TRANSMITTER
C1	SINGLE PHASE CONDUIT	N.O.	NORMALLY OPEN	2P	TWO POLE
C3	THREE PHASE CONDUIT	O	OPEN	3P	THREE POLE
D.E.	DUAL ELEMENT	OLS	OVERLOADS		
DET	DETECTOR				
DISC.	DISCONNECT				
D.O.	DISSOLVED OXYGEN				
DPDT	DOUBLE POLE DOUBLE THROW				
ENCL.	ENCLOSURE				
EX. or EXIST.	EXISTING				
FU	FUSE				



LIGHTING FIXTURE SCHEDULE

(A)	SHAT-R-SHIELD INCOPLAS LED HYBRID ADJUSTABLE WALL PACK: CAT. NO. 045-11Y-50-SVP-FR-VL-P-00-WC-01 OR EQUAL 5,000 LUMENS, 45W, 5,000K, FROSTED POLY. LENS, 120-277V WITH PHOTO CELL.
(B)	SEE SPECIFICATION SECTION 33 16 19.33 FOR LADDER, OBSTRUCTION, AND PLATFORM LIGHTS.
(B1)	SHAT-R-SHIELD INCOPLAS LED HYBRID ADJUSTABLE WALL PACK: CAT. NO. 090-11Y-50-SVP-FR-VL-A-00-WC-01 OR EQUAL 10,000 LUMENS, 90W, 5,000K, FROSTED POLY. LENS, 120-277V.
(B2)	LITHONIA DMW2 LED WET LOCATION RATED 2FT PENDANT MOUNT LINEAR FIXTURE: CAT. NO. DMW2-L24-400LM-PFL-DM-MVOLT-GZ1-40K-80CRI OR EQUAL 4,000 LUMENS, 40W, 40K, FROSTED POLY DIFFUSER, MED. DISTRIBUTION, 120-277V. ON OCCUPANCY SENSOR WHERE NOTED ON DRAWING.
(EM-EX)	QUANTUM EXIT/UNIT COMBO. LHQM LED W/ TWIN LED WP REMOTE HEAD, DUAL VOLTAGE (120/277V), 90 MINUTES MINIMUM NI-CAD BATTERY BACKUP.

NOTE:
1. PROVIDE ALL POWER AND CONTROL WIRING FOR INSTRUMENTATION NOTED IN SPECIFICATION SECTIONS AND ON DRAWINGS.



CONSULTANTS

REVISIONS

NO.	DATE	DESCRIPTION

REFER TO EQUIPMENT MANUFACTURER'S SHOP DRAWING

1" = 5' 0" 1" = 2'

PLAN SHEET DESIGNATION

C	COVER
G	GENERAL
H	HAZARDOUS MATERIALS
L	LANDSCAPE
S	STRUCTURAL
A	ARCHITECTURAL
I	INSTRUMENTATION
Q	EQUIPMENT
F	FIRE PROTECTION
M	MECHANICAL
P	PLUMBING
T	TELECOMMUNICATIONS
R	RESOURCE

PROJECT NO: 150826.40

SCALE: AS NOTED

DRAWING DATE:

DESIGNED BY: PVT

DRAWN BY: TLB

CHECKED BY: GDG

CLIENT

MADISON WATER UTILITY
MADISON, WISCONSIN

CONTRACT NO. 7821
PROJECT NO. 10445

BLACKHAWK WATER TOWER

SHEET TITLE
ELECTRICAL SYMBOL LIST

E-3

I:\BURLINGTON\MADISON\150826-BLACKHAWK TOWER\CADD\DRAWINGS\DWG\BLACKHAWK TOWER\SHEETS\ELECTRICAL\E-3 ELECTRICAL SYMBOL LIST.DWG E-3 ELECTRICAL SYMBOL LIST