



Department of Public Works  
**Engineering Division**  
 Robert F. Phillips, P.E., City Engineer

City-County Building, Room 115  
 210 Martin Luther King, Jr. Boulevard  
 Madison, Wisconsin 53703  
 Phone: (608) 266-4751  
 Fax: (608) 264-9275  
[engineering@cityofmadison.com](mailto:engineering@cityofmadison.com)  
[www.cityofmadison.com/engineering](http://www.cityofmadison.com/engineering)

**Assistant City Engineer**  
 Gregory T. Fries, P.E.  
 Kathleen M. Cryan

**Principal Engineer 2**  
 Christopher J. Petykowski, P.E.  
 John S. Fahrney, P.E.

**Principal Engineer 1**  
 Christina M. Bachmann, P.E.  
 Mark D. Moder, P.E..

**Facilities & Sustainability**  
 Jeanne E. Hoffman, Manager

**Mapping Section Manager**  
 Eric T. Pederson, P.S.

**Financial Manager**  
 Steven B. Danner-Rivers

February 6, 2018

NOTICE OF ADDENDUM  
 ADDENDUM NO. 2  
 CONTRACT NO. 7843  
 RONALD REAGAN AVENUE, JOHN WALL DRIVE AND MERCHANT STREET  
 ASSESSMENT DISTRICT – 2017

Revise and amend the contract document(s) for the above project as stated in this addendum, otherwise, the original document shall remain in effect.

**BID OPENING:**

REMOVE AND REPLACE PAGE A-1 OF SECTION A: ADVERTISEMENT FOR BID AND INSTRUCTION TO BIDDERS with the attached page A-1. The bid submission deadline has been changed to Wednesday, February 14, 2018 at 2:00 PM because soil borings for Lots 3 and 4 will be complete on Friday, February 9, 2018. An addendum will be issued on Monday, February 12, 2018 with this information.

**SPECIAL PROVISIONS:**

DELETE THE 2<sup>ND</sup> PARAGRAPH OF SECTION 109.2 PROSECUTION OF WORK AND REPLACE WITH THE FOLLOWING:

**SECTION 109.2      PROSECUTION OF WORK**  
 2<sup>ND</sup> PARAGRAPH

The Contractor shall complete the sanitary sewer removal on Lot 3 within **45 DAYS** after the work start letter is issued.

**PROPOSAL:**

One item has been revised in the proposal. See below for a summary. Refer to the proposal for the information.

**ITEMS:**

Action	Bid Item	Description	Original Qty.	New Qty.
REMOVE	40202	HMA PAVEMENT E-1	3,700 Ton	---
ADD	40203	HMA PAVEMENT 3 MT 58-28 S	---	2,300 Ton
ADD	40204	HMA PAVEMENT 4 MT 58-28 S	---	1,400 Ton

February 6, 2018

Page 2

**PLANS:**

D-1: Updated call off #2 with the asphalt upper layer and #3 lower layer mixtures.

D-2: Updated call off #2 with the asphalt upper layer and #3 lower layer mixtures.

Please acknowledge this addendum on page E1 of the contract documents and/or in Section E: Bidder's Acknowledgement on Bid Express.

Electronic version of these documents can be found on the Bid Express web site at:

<http://www.bidexpress.com>

If you are unable to download plan revisions associated with the addendum, please contact the Engineering office at 608-266-4751 receive the material by another route.

Sincerely,

A handwritten signature in blue ink, appearing to read 'R. Phillips', written over a horizontal line.

Robert F. Phillips, P.E.  
City Engineer

RFP:AJZ

# SECTION A: ADVERTISEMENT FOR BIDS AND INSTRUCTIONS TO BIDDERS

## REQUEST FOR BID FOR PUBLIC WORKS CONSTRUCTION CITY OF MADISON, WISCONSIN

### A BEST VALUE CONTRACTING MUNICIPALITY

PROJECT NAME:	Ronald Reagan Avenue, John Wall Drive and Merchant Street Assessment District - 2017
CONTRACT NO.:	7843
SBE GOAL	12%
BID BOND	5%
SBE PRE BID MEETING (1:00 P.M.)	February 2, 2018
PREQUALIFICATION APPLICATION DUE (2:00 P.M.)	February 7, 2018
BID SUBMISSION (2:00 P.M.)	February 14, 2018
BID OPEN (2:30 P.M.)	February 14, 2018
PUBLISHED IN WSJ	January 25 & February 1 & 9, 2018

SBE PRE BID MEETING: Representatives of the Affirmative Action Department will be present to discuss the Small Business Enterprise requirements at 1600 Emil Street, Madison Wisconsin.

PREQUALIFICATION APPLICATION: Forms are available on our website, [www.cityofmadison.com/business/pw/forms.cfm](http://www.cityofmadison.com/business/pw/forms.cfm). If not currently prequalified in the categories listed in Section A, an amendment to your Prequalification will need to be submitted prior to the same due date. Postmark is not applicable.

BIDS TO BE SUBMITTED by hand to 1600 EMIL ST., MADISON, WI 53713 or online at [www.bidexpress.com](http://www.bidexpress.com).

THE BID OPENING is at 1600 EMIL ST., MADISON, WI 53713.

#### STANDARD SPECIFICATIONS

The City of Madison's Standard Specifications for Public Works Construction - 2018 Edition, as supplemented and amended from time to time, forms a part of these contract documents as if attached hereto.

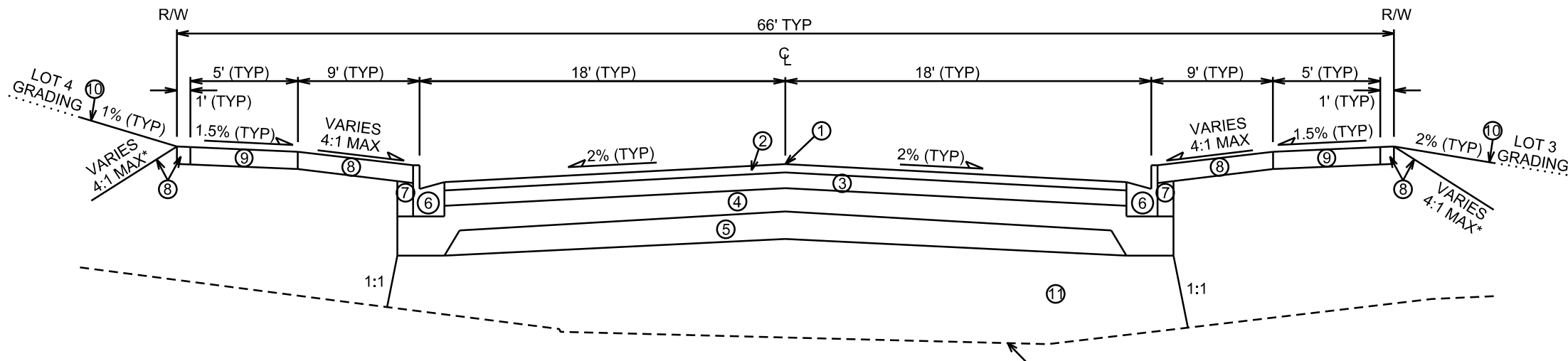
These standard specifications are available on the City of Madison Public Works website, [www.cityofmadison.com/Business/PW/specs.cfm](http://www.cityofmadison.com/Business/PW/specs.cfm).

The Contractor shall review these Specifications prior to preparation of proposals for the work to be done under this contract, with specific attention to Article 102, "BIDDING REQUIREMENTS AND CONDITIONS" and Article 103, "AWARD AND EXECUTION OF THE CONTRACT." For the convenience of the bidder, below are highlights of three subsections of the specifications.

#### SECTION 102.1: PRE-QUALIFICATION OF BIDDERS

In accordance with Wisconsin State Statutes 66.0901 (2) and (3), all bidders must submit to the Board of Public Works proof of responsibility on forms furnished by the City. The City requires that all bidders be qualified on a biennial basis.

Bidders must present satisfactory evidence that they have been regularly engaged in the type of work specified herein and they are fully prepared with necessary capital, materials, machinery and supervisory personnel to conduct the work to be contracted for to the satisfaction of the City. All bidders must be pre-qualified by the Board of Public Works for the type of construction on which they are bidding prior to the opening of the bid.

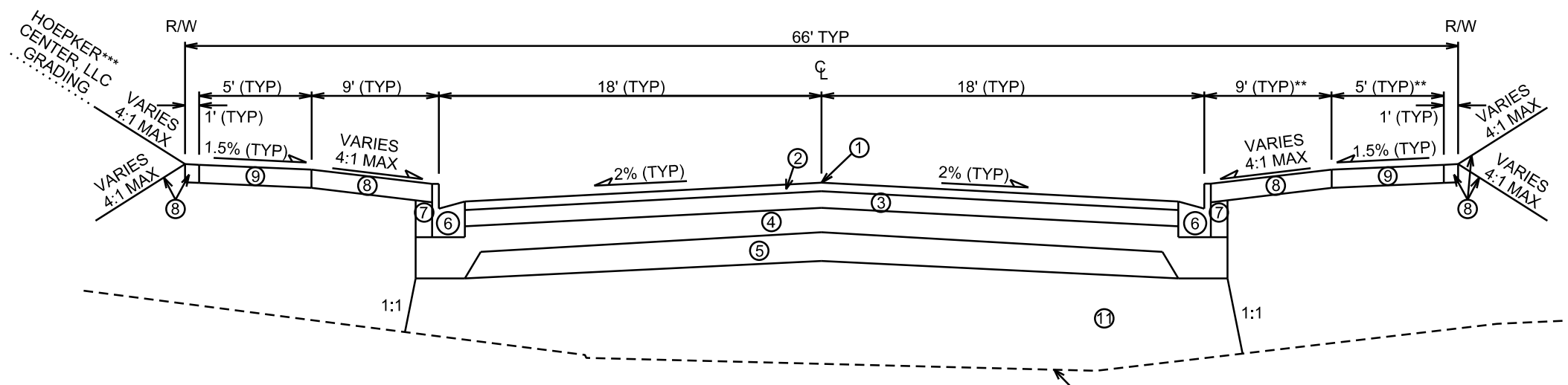


**TYPICAL FINISHED SECTION**  
RONALD REAGAN AVE  
STA 104+15 TO STA 113+60

REMOVE 18" OF TOPSOIL,  
REPLACE W/SELECT FILL

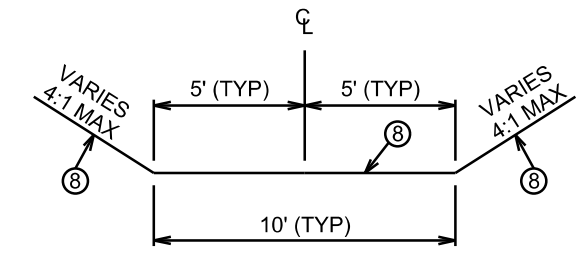
- ① POINT REFERRED TO ON PROFILE
- ② 2" BITUMINOUS UPPER LAYER, 4 MT 58-28 H
- ③ 3 1/4" BITUMINOUS LOWER LAYER, 3 MT 58-28 H
- ④ 4" GRADATION 2 CRUSHED STONE
- ⑤ 6" GRADATION 1 CRUSHED STONE
- ⑥ TYPE 'A' CONCRETE CURB & GUTTER
- ⑦ FILL BORROW
- ⑧ 6" TOPSOIL, TERRACE SEED AND EROSION MAT
- ⑨ 5" CONCRETE SIDEWALK
- ⑩ TEMPORARY SEED
- ⑪ SELECT FILL

NOTE:  
 - SEE PLAN/PROFILE SHEETS FOR TOP OF CURB ELEVATIONS.  
 - TYPICAL SECTION NOT TO SCALE.  
 \*DRAINAGE DITCH CROSSING RONALD REAGAN AVENUE AT STA 113+29.  
 \*\*NO SW ON RONALD REAGAN AVENUE FROM STA 120+25 TO STA 124+05.31 RT.  
 \*\*\*MATCH HOEPKER CENTER, LLC GRADING. IF LOT 1 IS NOT UNDER CONSTRUCTION, MATCH EX. GROUND.



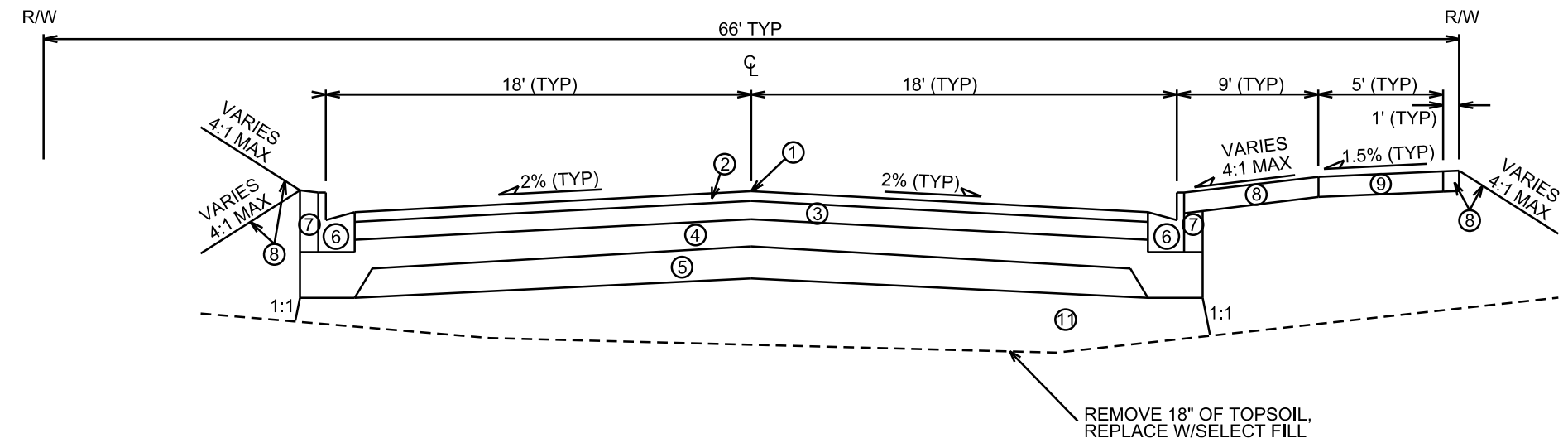
**TYPICAL FINISHED SECTION**  
RONALD REAGAN AVE  
STA 113+60 TO STA 124+05.31

REMOVE 18" OF TOPSOIL,  
REPLACE W/SELECT FILL



**TYPICAL FINISHED SECTION**  
STA 500+35 TO STA 518+00  
DRAINAGE DITCH

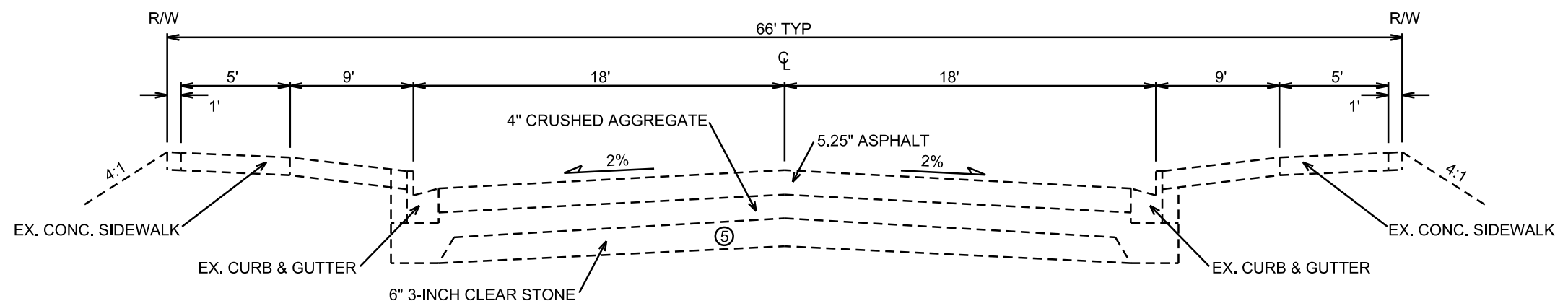
PLOT SCALE: \_\_\_\_\_  
 PLOT NAME: \_\_\_\_\_  
 REV. DATE: \_\_\_\_\_  
 ORIGINATOR: CITY OF MADISON, STREETS DIVISION



**TYPICAL FINISHED SECTION**  
STA 200+50 TO STA 212+29.73  
JOHN WALL DR

- ① POINT REFERRED TO ON PROFILE
- ② 2" BITUMINOUS UPPER LAYER, 4 MT 58-28 H
- ③ 3 1/4" BITUMINOUS LOWER LAYER, 3 MT 58-28 H
- ④ 4" GRADATION 2 CRUSHED STONE
- ⑤ 6" GRADATION 1 CRUSHED STONE
- ⑥ TYPE 'A' CONCRETE CURB & GUTTER
- ⑦ FILL BORROW
- ⑧ 6" TOPSOIL, TERRACE SEED AND EROSION MAT
- ⑨ 5" CONCRETE SIDEWALK
- ⑩ TEMPORARY SEED
- ⑪ SELECT FILL

NOTE:  
- SEE PLAN/PROFILE SHEETS FOR TOP OF CURB ELEVATIONS.  
- TYPICAL SECTION NOT TO SCALE.  
- NO SW ON NORTH SIDE OF JOHN WALL DR.



**TYPICAL EXISTING SECTION**  
MERCHANT ST

PLOT SCALE: \_\_\_\_\_  
PLOT NAME: \_\_\_\_\_  
REV. DATE: \_\_\_\_\_  
ORIGINATOR: CITY OF MADISON, STREETS DIVISION