

Madison, Wisconsin

# CITY OF MADISON

## CITY ENGINEERING DIVISION

### DEPARTMENT OF PUBLIC WORKS

# PLAN OF PROPOSED IMPROVEMENT

## S. HIGH POINT ROAD TURN LANE


### AT VELVET LEAF DRIVE

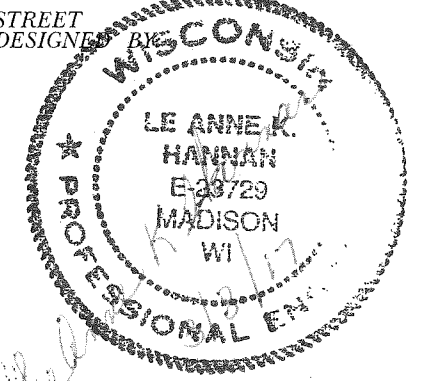
CITY PROJECT NO. 10422  
CITY CONTRACT NO. 7844

INDEX OF SHEETS

SHEET NO.	TITLE
1	1
DI	DETAILS
E1-E2	EROSION CONTROL PLANS
P1-P2	STREET PLAN & PROFILES
TC1-TC3	TRAFFIC CONTROL PLAN
UI	STORM PLAN & PROFILES
X1-X4	CROSS SECTIONS

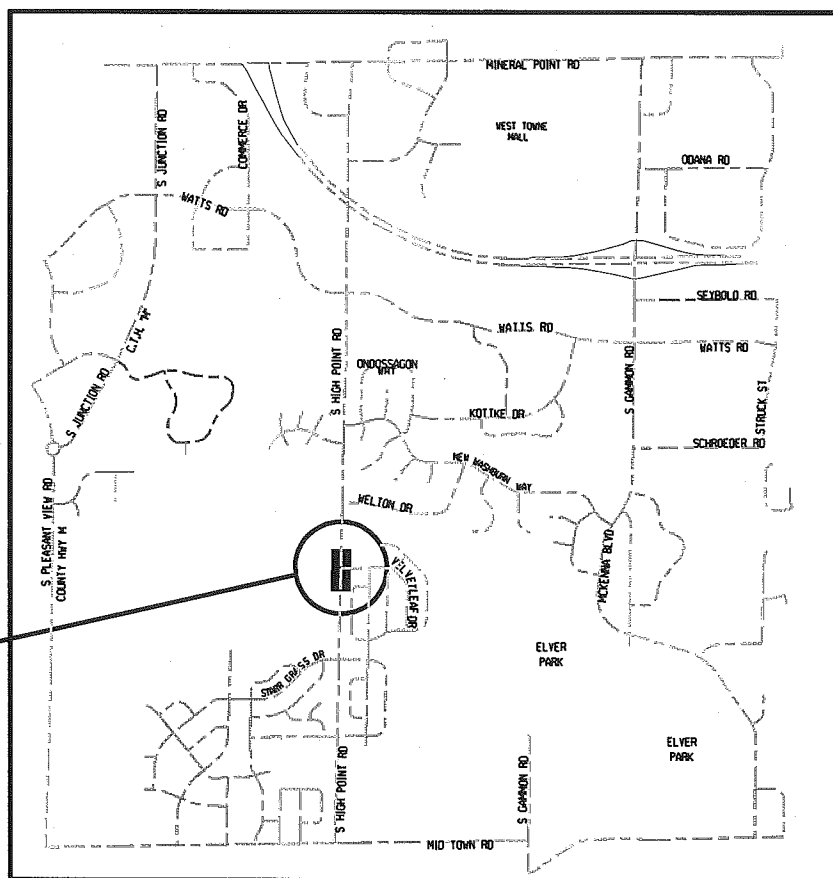
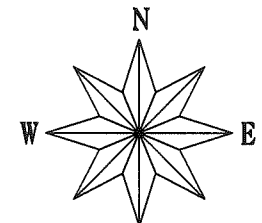
PUBLIC IMPROVEMENT PROJECT APPROVED  
FEBRUARY 7, 2017  
BY THE COMMON COUNCIL OF MADISON, WISCONSIN

PUBLIC IMPROVEMENT DESIGN APPROVED BY:  
  
City Engineer Date 3/10/17

STREET DESIGNED BY:  


STORM SEWER DESIGNED BY:  




TRAFFIC CONTROL DESIGNED BY:  

CONSTRUCTION PROJECT LOCATION

CONVENTIONAL SIGNS

FIELD VERIFY ALL UTILITY LOCATIONS

GAS	— G —
STORM SEWER	— ST —
SANITARY SEWER	— SAN —
WATER	— W —
OVERHEAD ELECTRIC	— OH —
POWER POLE	⊕
ADA COMPLIANT RAMP W/ DETECTABLE WARNING FIELD	
COMBUSTIBLE FLUIDS	

NOTES:

ALL GUTTERS SHALL DRAIN WITH A MINIMUM GRADE OF 0.50% TOWARD STORM SEWER INLETS.

SIDEWALK RAMPS AND CURB THRU SIDEWALK RAMPS SHALL HAVE A MAXIMUM SLOPE OF 1" PER 12". SIDEWALK AND CURB RAMPS SHALL BE CONSTRUCTED WITH A SIDE SLOPE OF 2.00%.

SIDEWALK SHALL HAVE A MINIMUM LONGITUDINAL SLOPE OF 0.50% AND A MAXIMUM LONGITUDINAL SLOPE OF 5.00% EXCEPT WHERE STREET GRADES EXCEED 5.00%.

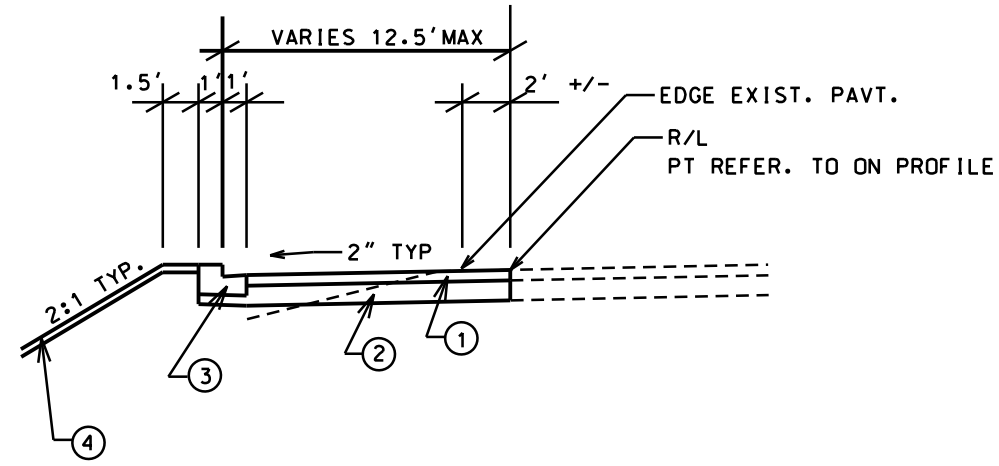
EARTH WORK SUMMARY:

EXCAVATION CUT (MEASURED PLAN QUANTITY)..... 181 C.Y.

ESTIMATED UNDISTRIBUTED UNDERCUT ..... 19 C.Y.

TOTAL UNCLASSIFIED EXCAVATION CUT.....200 C.Y.

PLOT SCALE: \_\_\_\_\_ PLOT NAME: \_\_\_\_\_ REV. DATE: \_\_\_\_\_ ORIGINATOR: CITY OF MADISON, STREETS DIVISION



- ① 5.5" HMA PAV'T. TYPE 1
- ② 4" C.A.B.C GRAD. #2  
6" C.A.B.C GRAD. #1
- ③ TYPE "H" CONC. C&G
- ④ TOPSOIL, SEED & MATTING

**TYPICAL SECTION**

LEVELS ON - 1, 2, 3, 4, 5, 6, 7, 8, 9, 10, 11, 12, 13, 14, 15, 16, 17, 18, 19, 20, 21, 22, 23, 24, 25, 26, 27, 28, 29, 30, 31, 32, 33, 34, 35, 36, 37, 38, 39, 40, 41, 42, 43, 44, 45, 46, 47, 48, 49, 50, 51, 52, 53, 54, 55, 56, 57, 58, 59, 60, 61, 62, 63

PLOT SCALE:

PLOT NAME:

REV. DATE:

ORIGINATOR:

**EROSION CONTROL NOTES:**

EROSION CONTROL MEASURES SHALL BE IN PLACE PRIOR TO ANY OTHER CONSTRUCTION ACTIVITY.

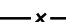




THE CONTRACTOR IS RESPONSIBLE FOR THE CONSTRUCTION AND MAINTENANCE OF ALL EROSION CONTROL MEASURES UNTIL FINAL ACCEPTANCE BY THE CITY OF MADISON.

THE CONTRACTOR SHALL INSTALL AND MAINTAIN EROSION CONTROL MEASURES IN ACCORDANCE WITH THE WDNR SOC STANDARDS AND CITY OF MADISON STANDARD SPECIFICATIONS.

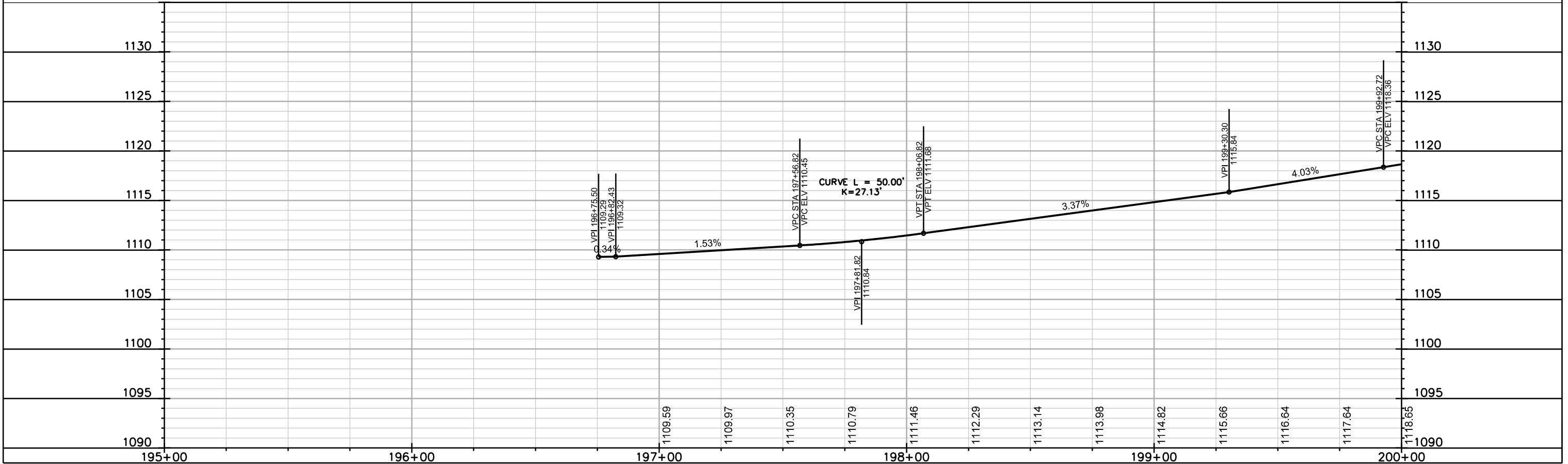
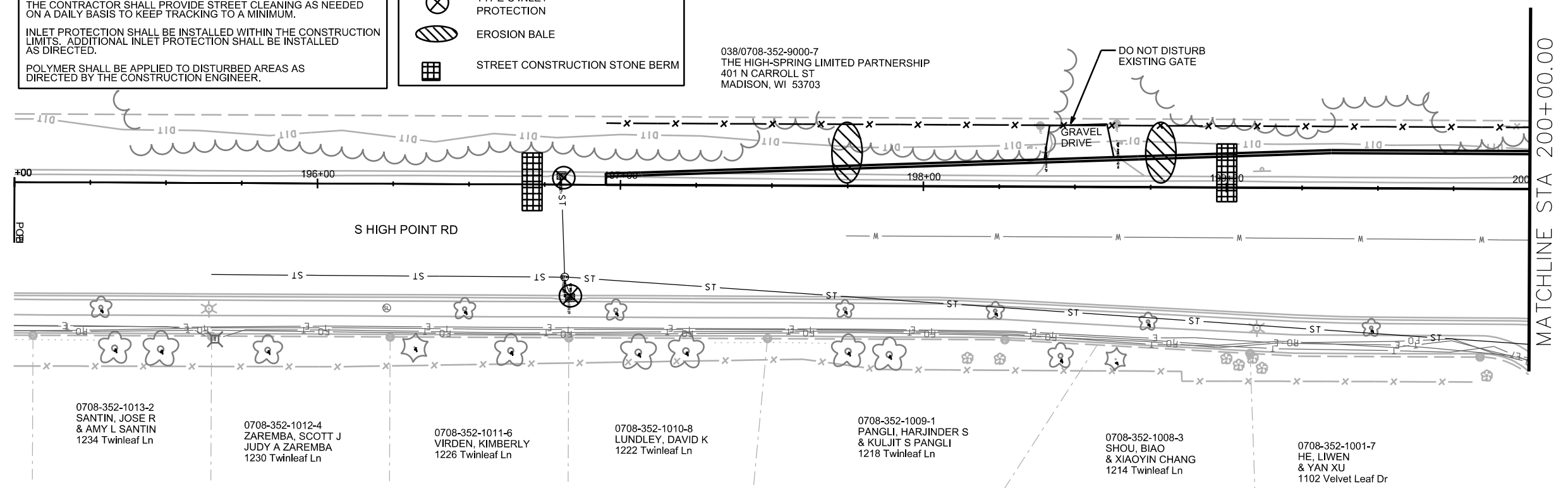
THE CONTRACTOR SHALL PROVIDE STREET CLEANING AS NEEDED ON A DAILY BASIS TO KEEP TRACKING TO A MINIMUM.

INLET PROTECTION SHALL BE INSTALLED WITHIN THE CONSTRUCTION LIMITS. ADDITIONAL INLET PROTECTION SHALL BE INSTALLED AS DIRECTED.

POLYMER SHALL BE APPLIED TO DISTURBED AREAS AS DIRECTED BY THE CONSTRUCTION ENGINEER.

-  SILT FENCE
-  TYPE D HYBRID INLET PROTECTION
-  TYPE C INLET PROTECTION
-  EROSION BALE
-  STREET CONSTRUCTION STONE BERM

038/0708-352-9000-7  
THE HIGH-SPRING LIMITED PARTNERSHIP  
401 N CARROLL ST  
MADISON, WI 53703



PLOT SCALE: \_\_\_\_\_

PLOT NAME: \_\_\_\_\_

REV. DATE: \_\_\_\_\_

ORIGINATOR: CITY OF MADISON, STREETS DIVISION



**EROSION CONTROL NOTES:**

EROSION CONTROL MEASURES SHALL BE IN PLACE PRIOR TO ANY OTHER CONSTRUCTION ACTIVITY.

THE CONTRACTOR IS RESPONSIBLE FOR THE CONSTRUCTION AND MAINTENANCE OF ALL EROSION CONTROL MEASURES UNTIL FINAL ACCEPTANCE BY THE CITY OF MADISON.

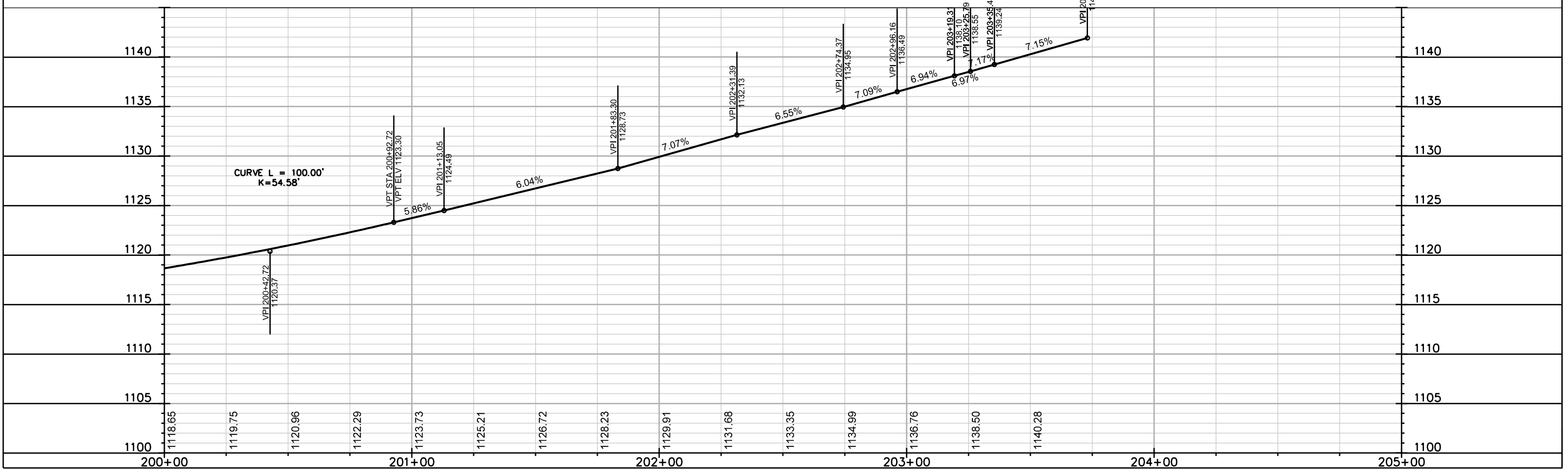
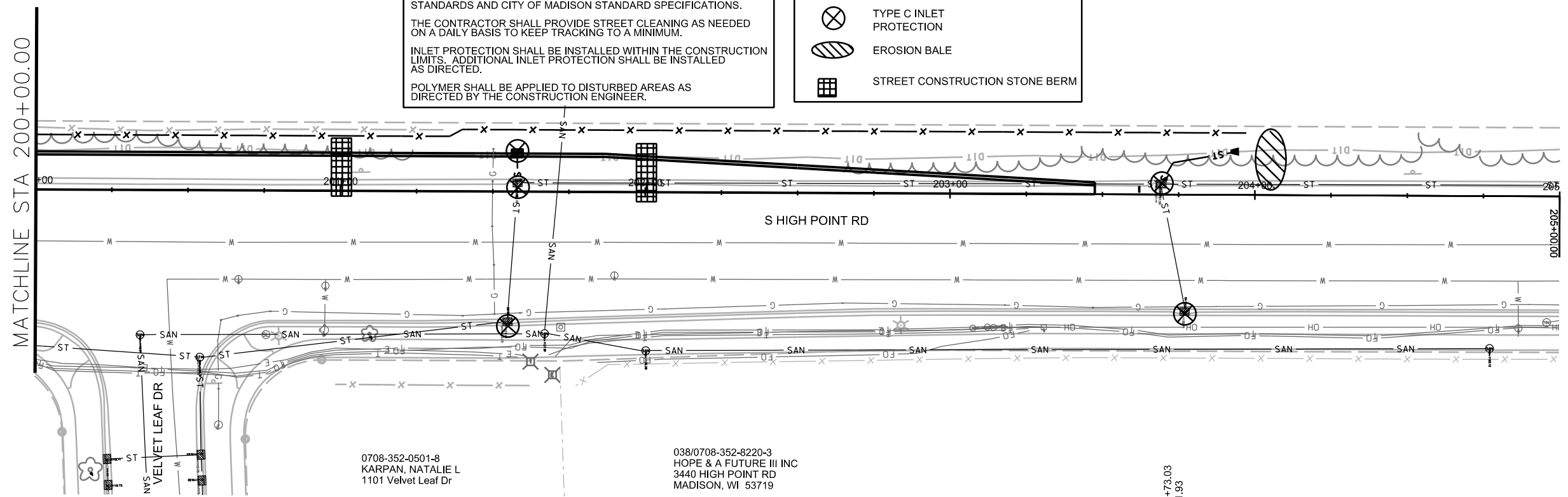
THE CONTRACTOR SHALL INSTALL AND MAINTAIN EROSION CONTROL MEASURES IN ACCORDANCE WITH THE WDNR SOC STANDARDS AND CITY OF MADISON STANDARD SPECIFICATIONS.

THE CONTRACTOR SHALL PROVIDE STREET CLEANING AS NEEDED ON A DAILY BASIS TO KEEP TRACKING TO A MINIMUM.

INLET PROTECTION SHALL BE INSTALLED WITHIN THE CONSTRUCTION LIMITS. ADDITIONAL INLET PROTECTION SHALL BE INSTALLED AS DIRECTED.

POLYMER SHALL BE APPLIED TO DISTURBED AREAS AS DIRECTED BY THE CONSTRUCTION ENGINEER.

- SILT FENCE
- TYPE D HYBRID INLET PROTECTION
- TYPE C INLET PROTECTION
- EROSION BALE
- STREET CONSTRUCTION STONE BERM

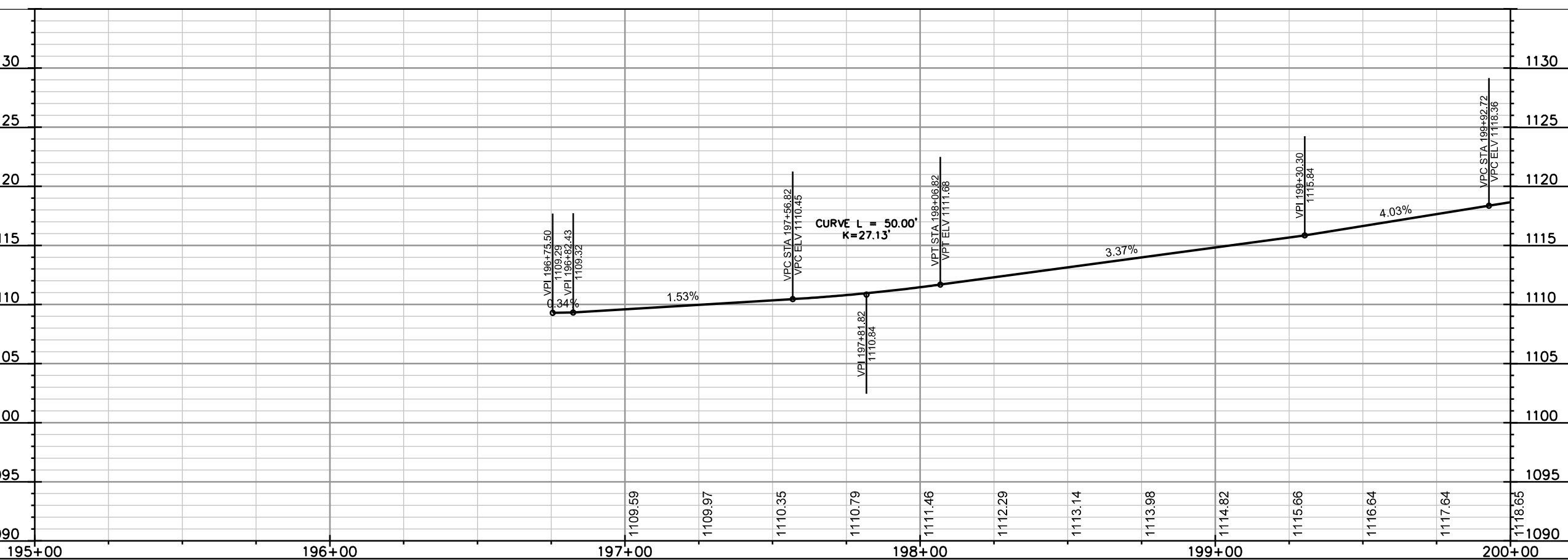
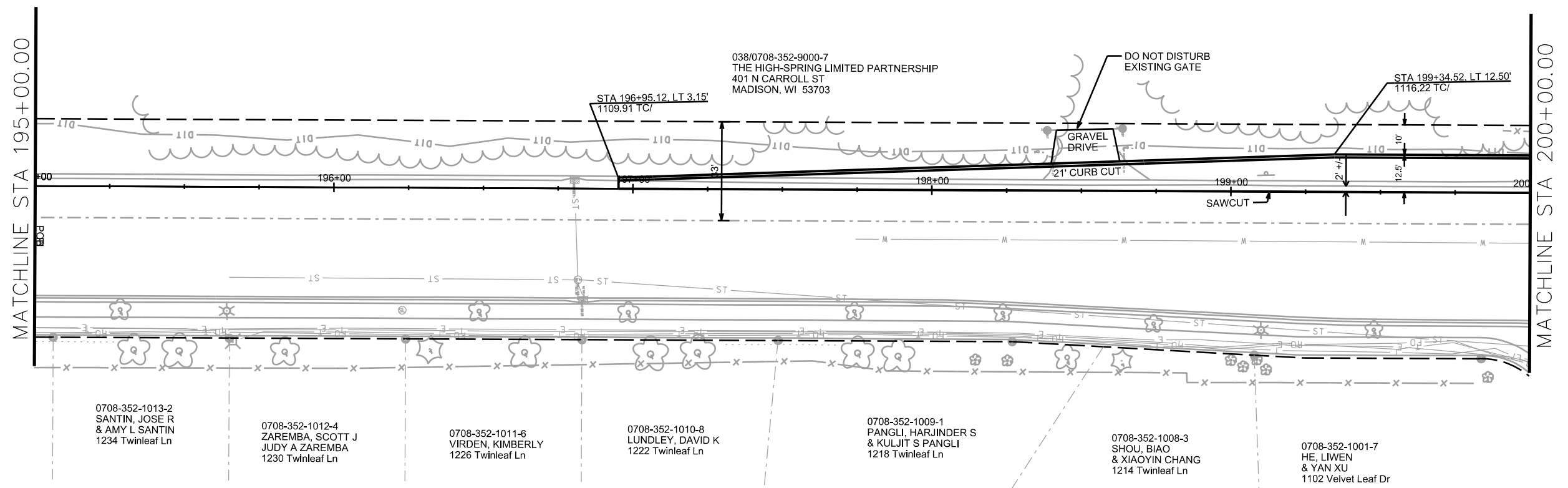


PLOT SCALE: \_\_\_\_\_

PLOT NAME: \_\_\_\_\_

REV. DATE: \_\_\_\_\_

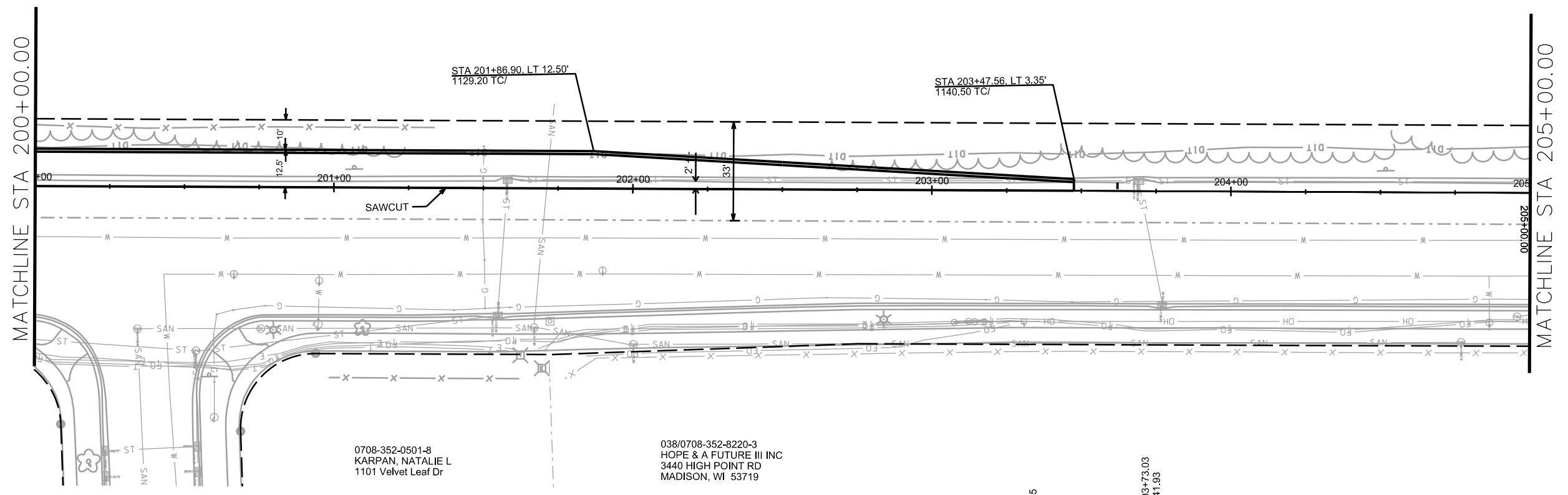
ORIGINATOR: CITY OF MADISON, STREETS DIVISION



PLOT SCALE: \_\_\_\_\_  
PLOT NAME: \_\_\_\_\_  
REV. DATE: \_\_\_\_\_  
ORIGINATOR: CITY OF MADISON, STREETS DIVISION

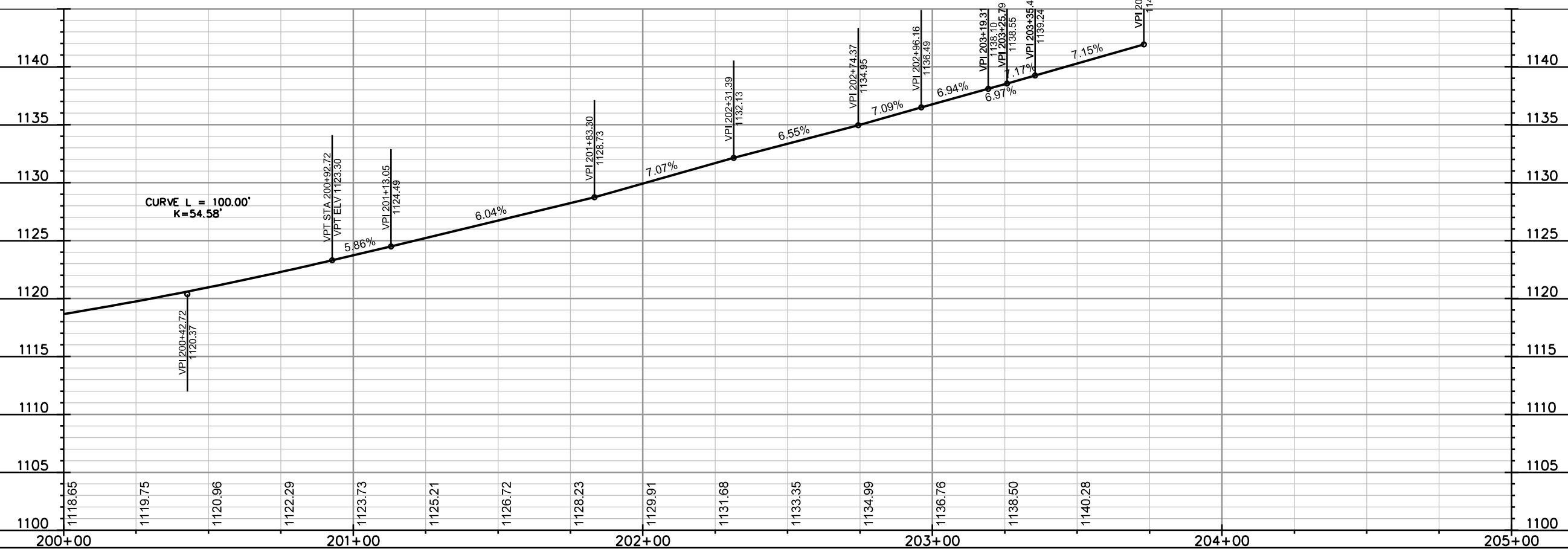
PLAN AND PROFILE

S HIGH POINT RD CITY OF MADISON



0708-352-0501-8  
KARPAN, NATALIE L  
1101 Velvet Leaf Dr

038/0708-352-8220-3  
HOPE & A FUTURE III INC  
3440 HIGH POINT RD  
MADISON, WI 53719



PLOT SCALE: \_\_\_\_\_

PLOT NAME: \_\_\_\_\_

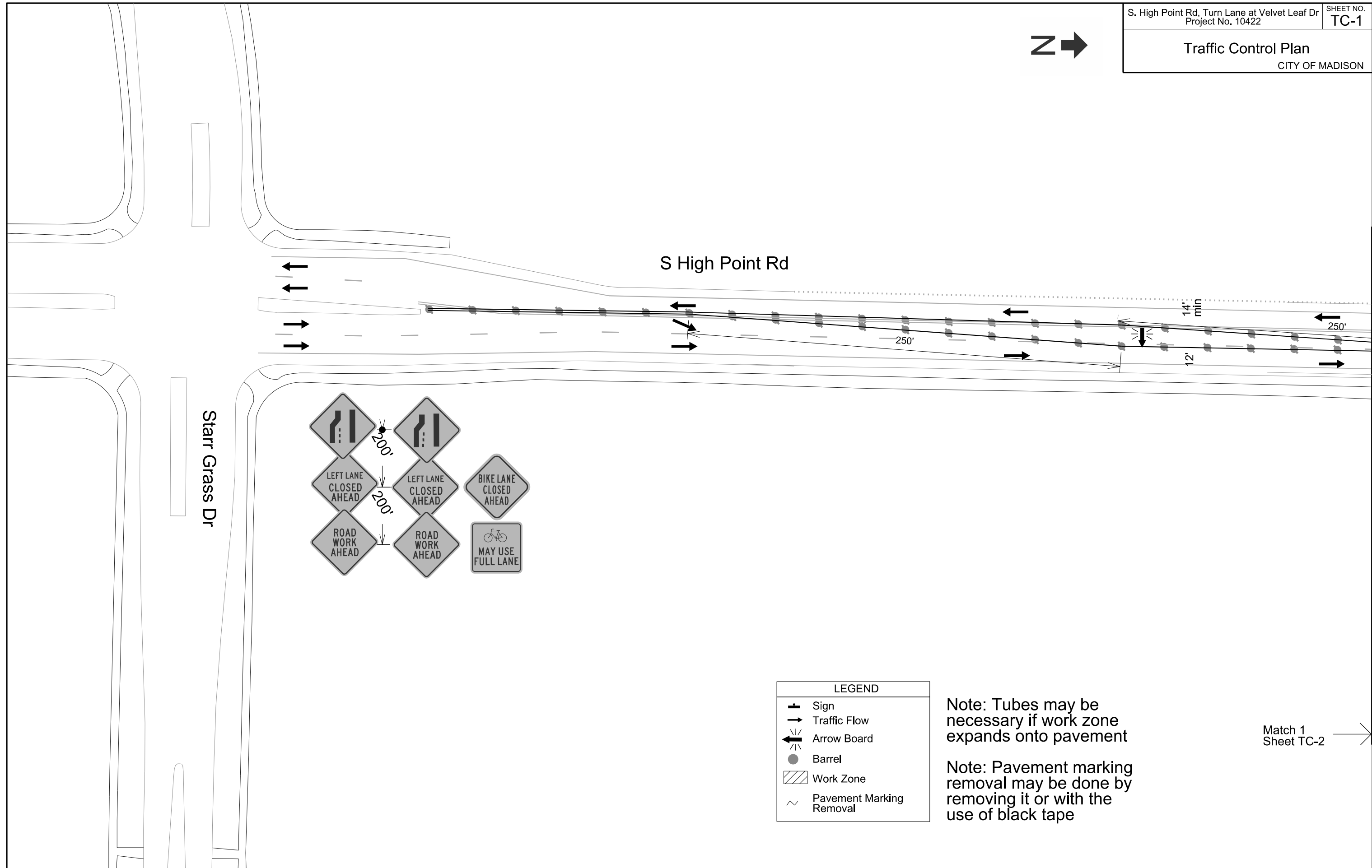
REV. DATE: \_\_\_\_\_

ORIGINATOR: CITY OF MADISON, STREETS DIVISION

Traffic Control Plan  
CITY OF MADISON



PLOT SCALE:  
PLOT NAME:  
REV. DATE:  
ORIGINATOR: CITY OF MADISON, TRAFFIC ENG. DIV.



LEGEND	
	Sign
	Traffic Flow
	Arrow Board
	Barrel
	Work Zone
	Pavement Marking Removal

Note: Tubes may be necessary if work zone expands onto pavement

Note: Pavement marking removal may be done by removing it or with the use of black tape

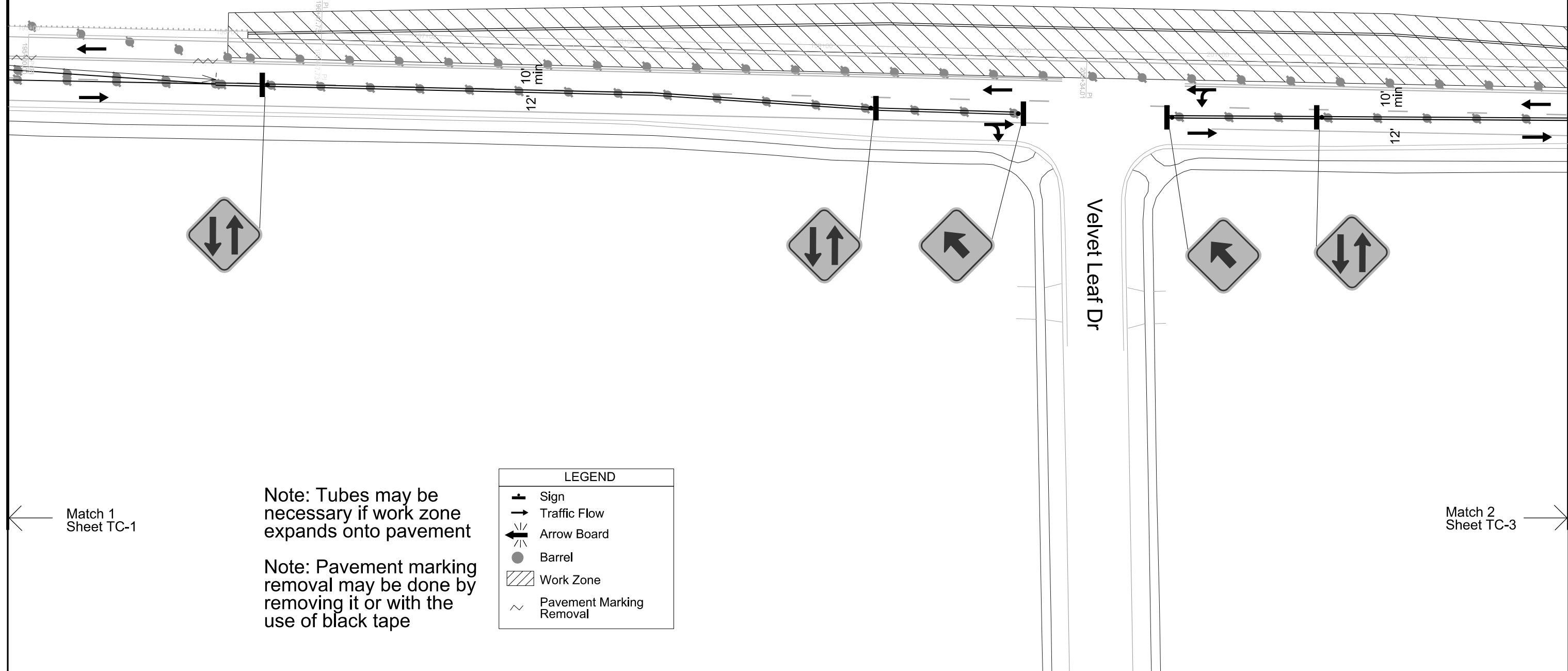
Match 1 Sheet TC-2



PLOT SCALE:  
 PLOT NAME:  
 REV. DATE:  
 ORIGINATOR: CITY OF MADISON, TRAFFIC ENG. DIV.

S High Point Rd

Velvet Leaf Dr



Note: Tubes may be necessary if work zone expands onto pavement

Note: Pavement marking removal may be done by removing it or with the use of black tape

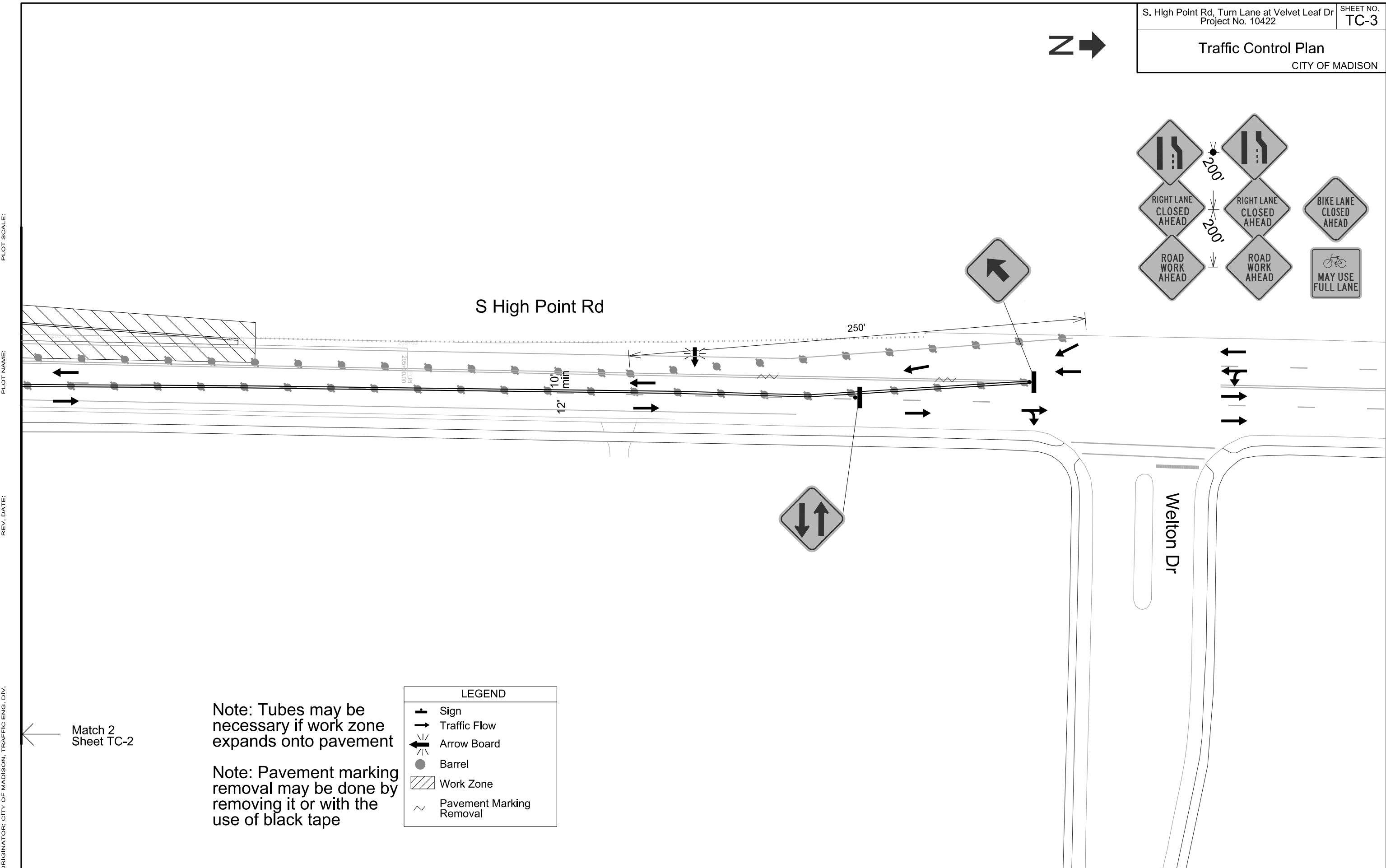
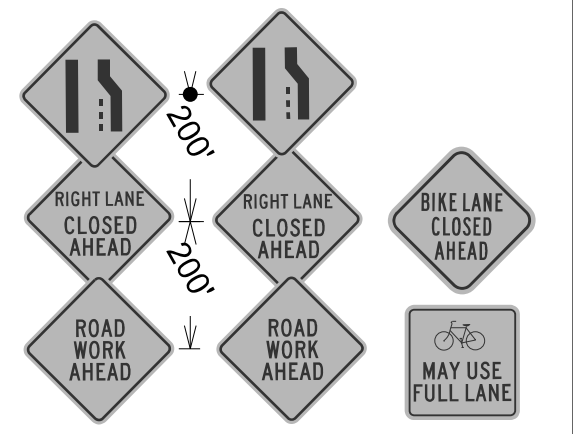
LEGEND	
	Sign
	Traffic Flow
	Arrow Board
	Barrel
	Work Zone
	Pavement Marking Removal

Match 1  
 Sheet TC-1

Match 2  
 Sheet TC-3



**Traffic Control Plan**  
 CITY OF MADISON



PLOT SCALE:

PLOT NAME:

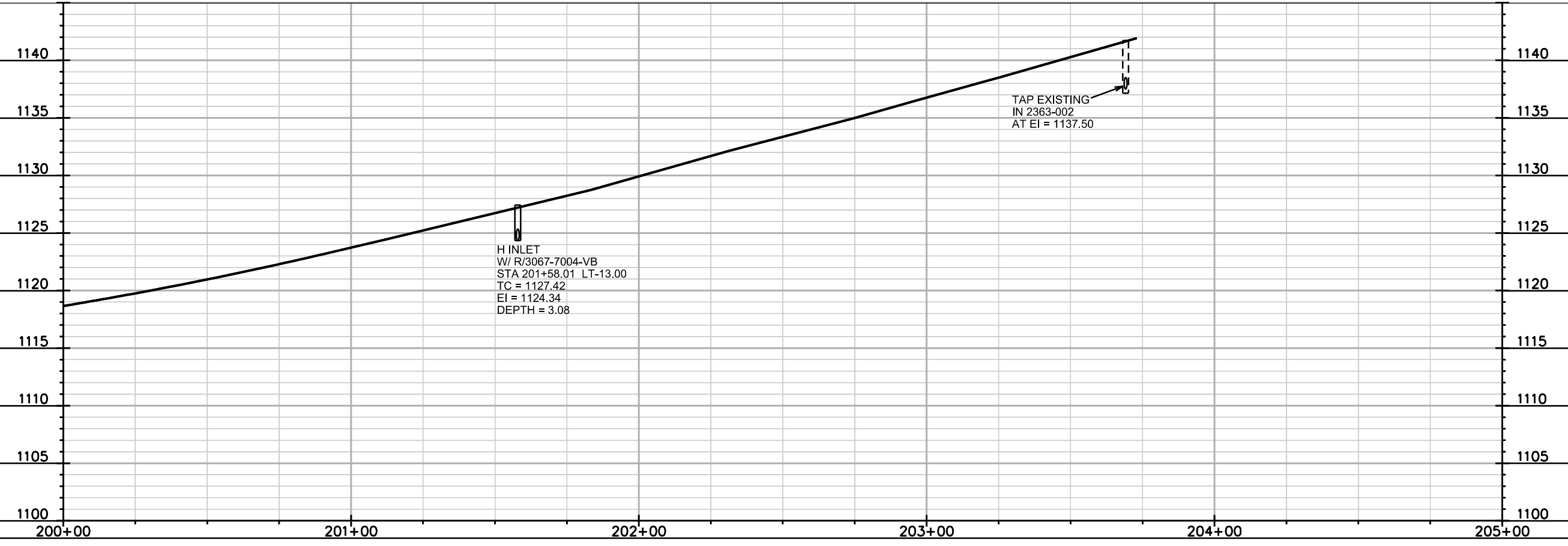
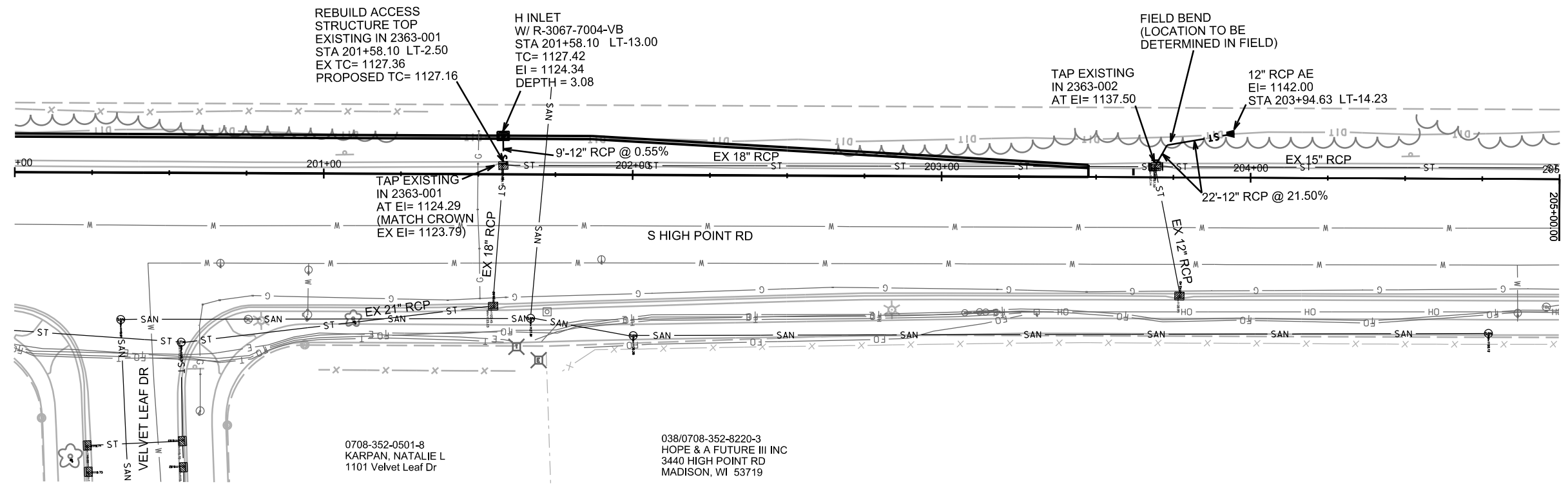
REV. DATE:

ORIGINATOR: CITY OF MADISON, TRAFFIC ENG. DIV.

Note: Tubes may be necessary if work zone expands onto pavement

Note: Pavement marking removal may be done by removing it or with the use of black tape

LEGEND	
	Sign
	Traffic Flow
	Arrow Board
	Barrel
	Work Zone
	Pavement Marking Removal



PLOT SCALE: \_\_\_\_\_

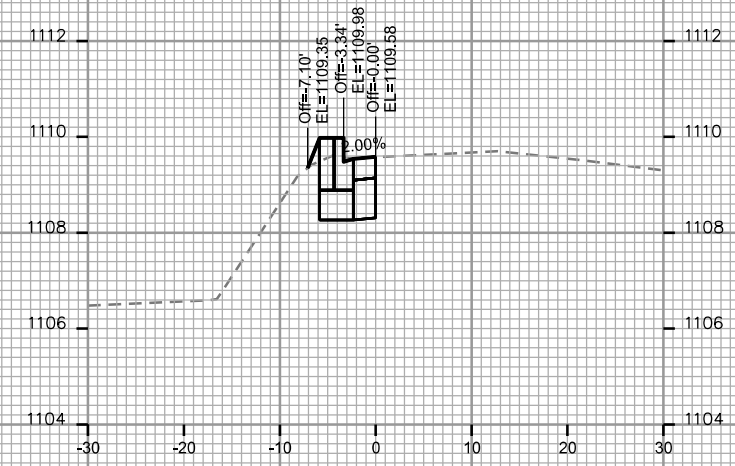
PLOT NAME: \_\_\_\_\_

REV. DATE: \_\_\_\_\_

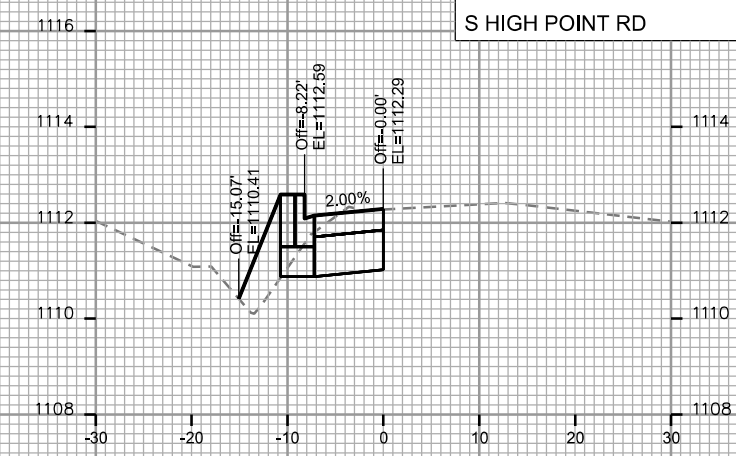
ORIGINATOR: CITY OF MADISON, STREETS DIVISION

CROSS SECTIONS

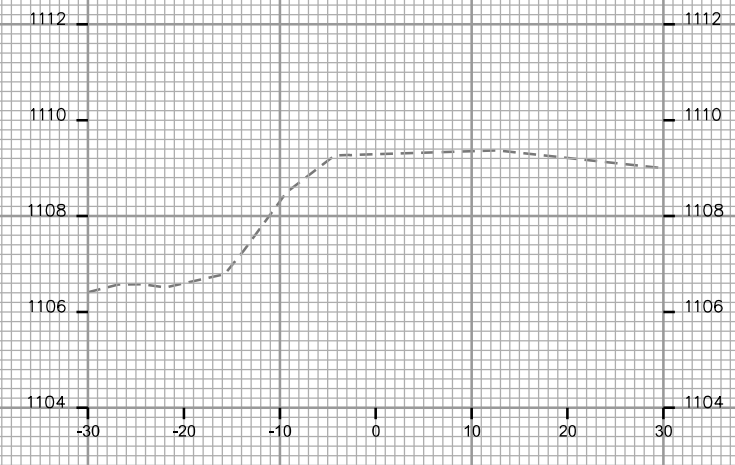
S HIGH POINT RD CITY OF MADISON



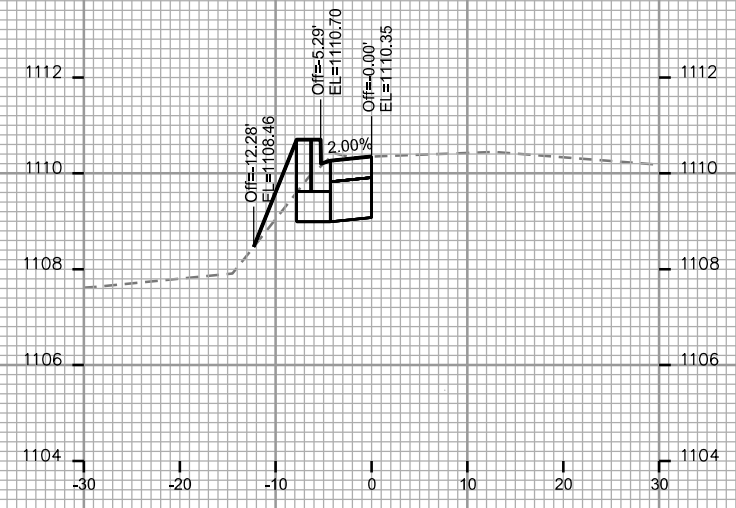
STA. 197+00



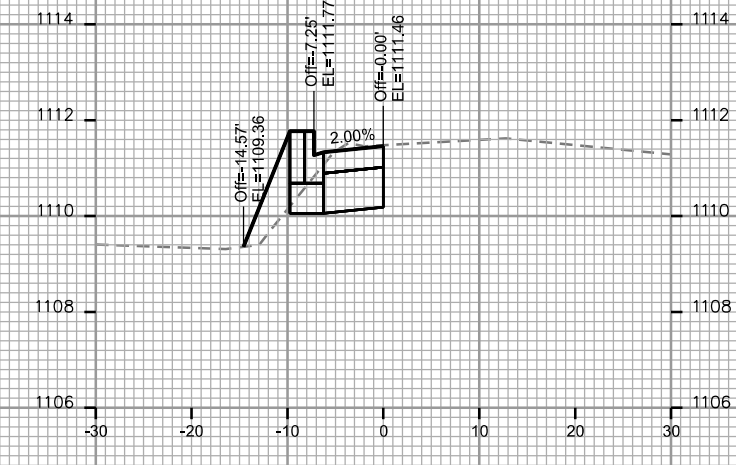
STA. 198+25



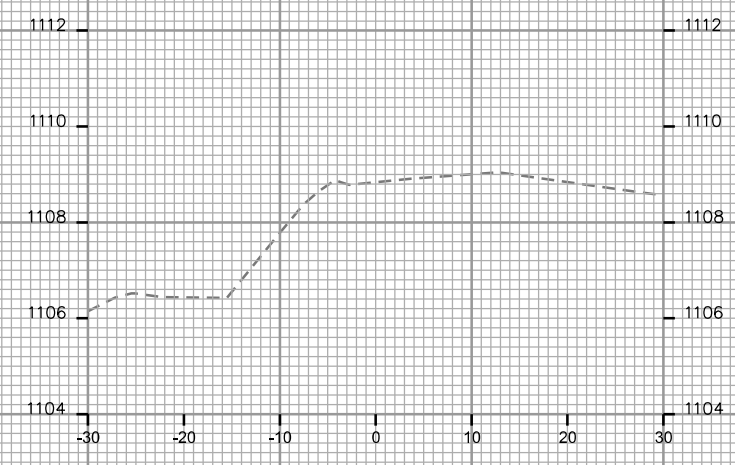
STA. 196+75



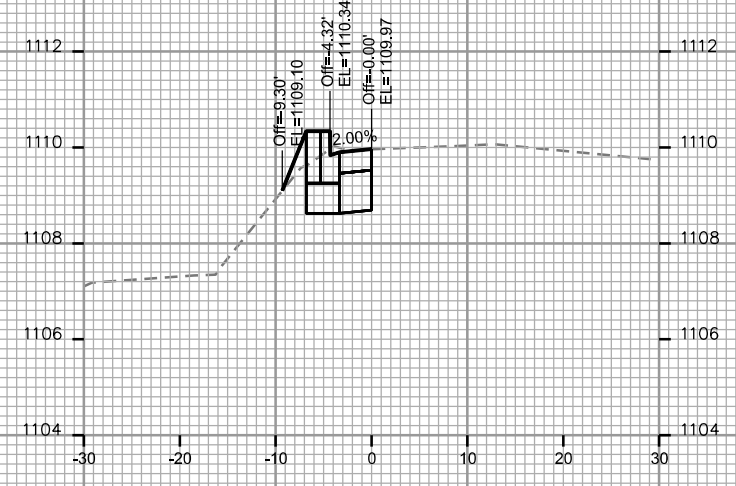
STA. 197+50



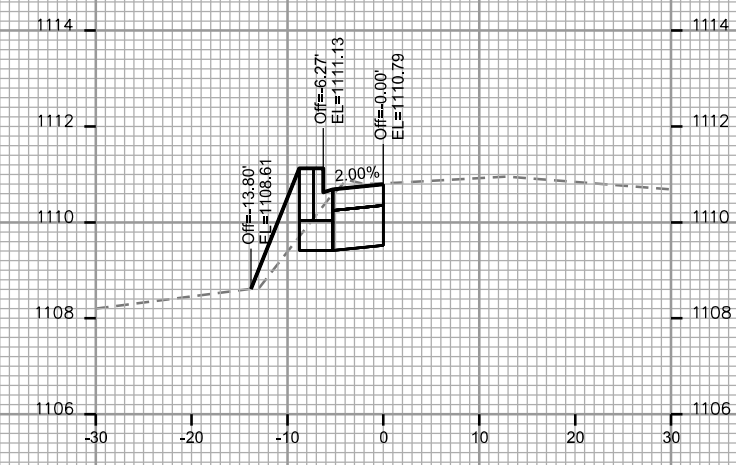
STA. 198+00



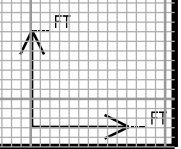
STA. 196+50



STA. 197+25



STA. 197+75



PLOT SCALE: \_\_\_\_\_

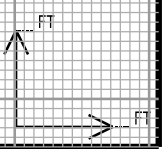
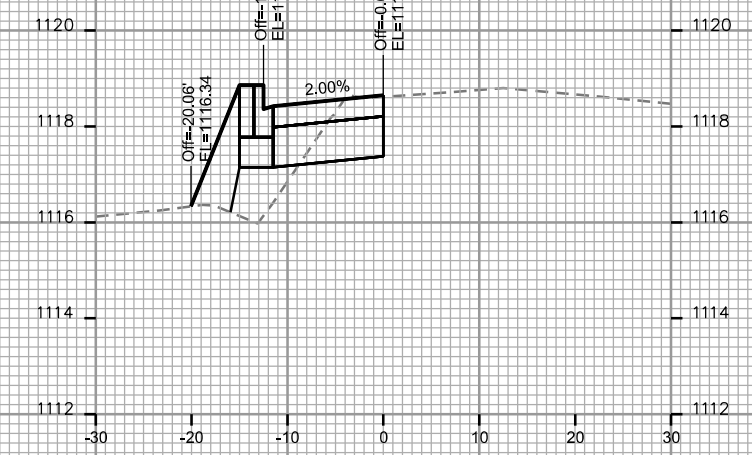
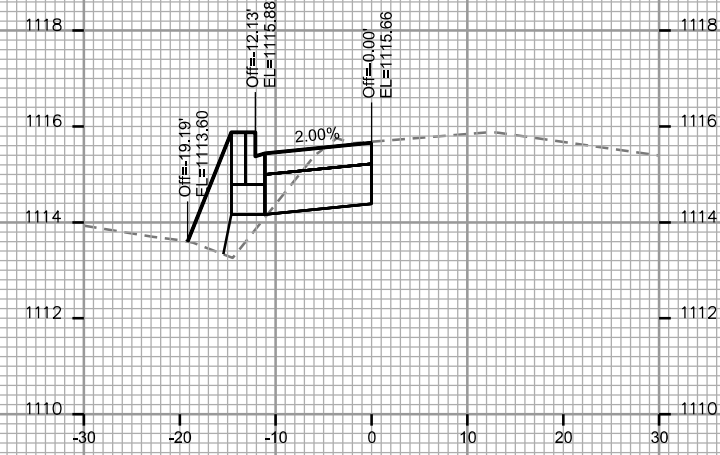
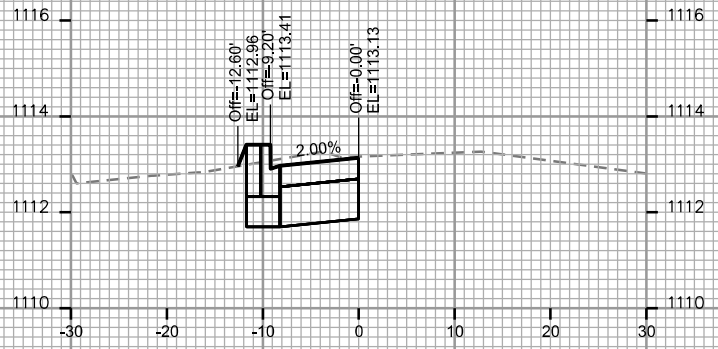
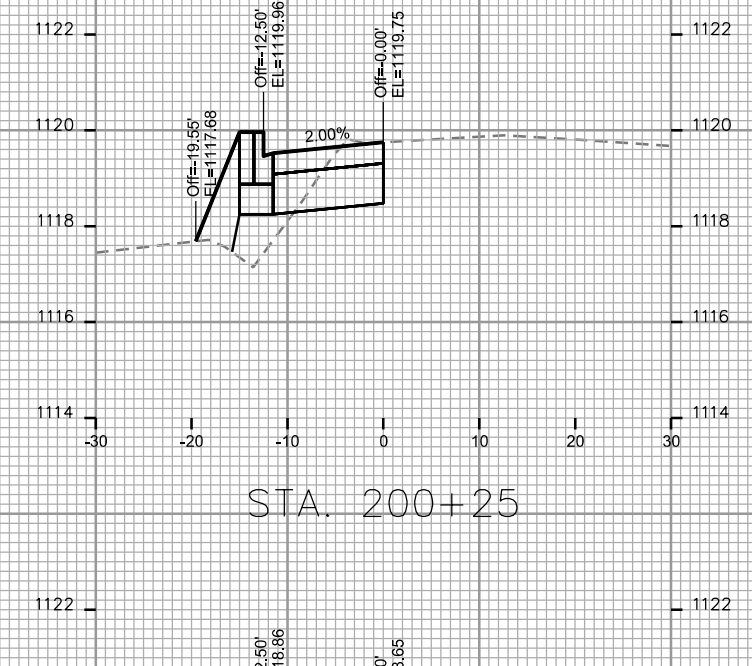
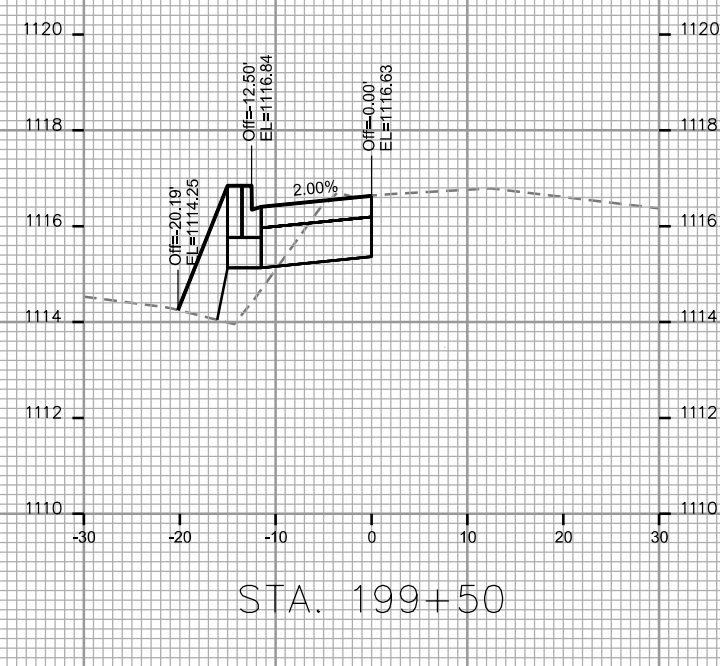
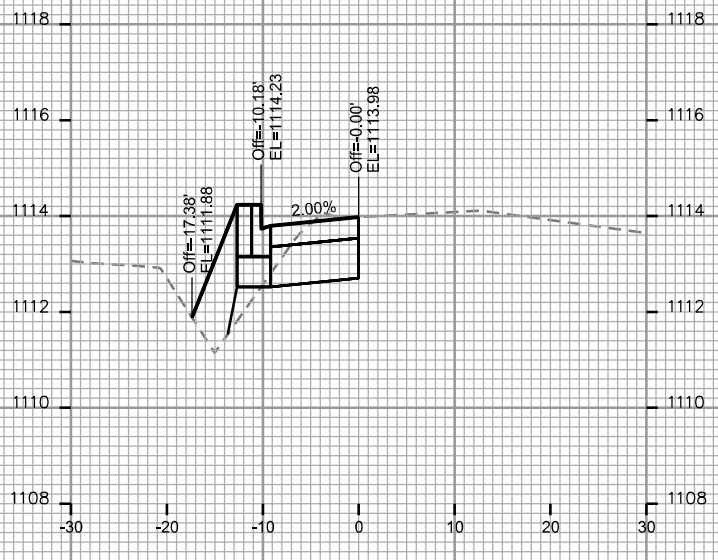
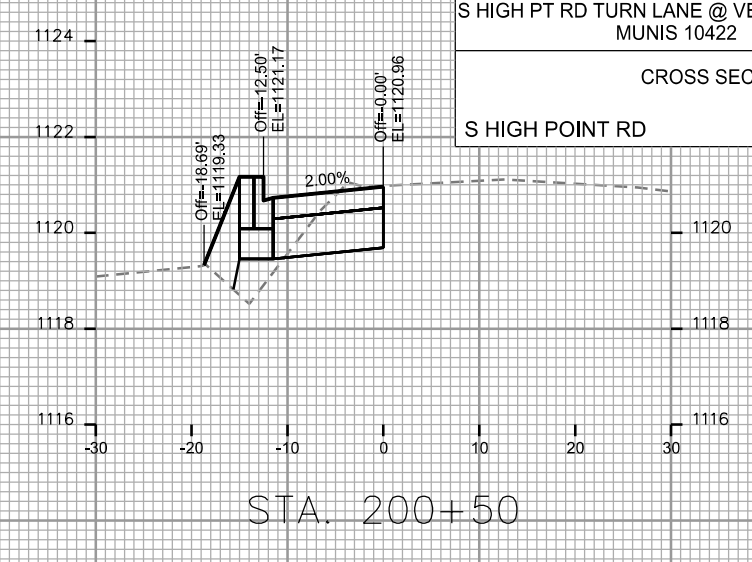
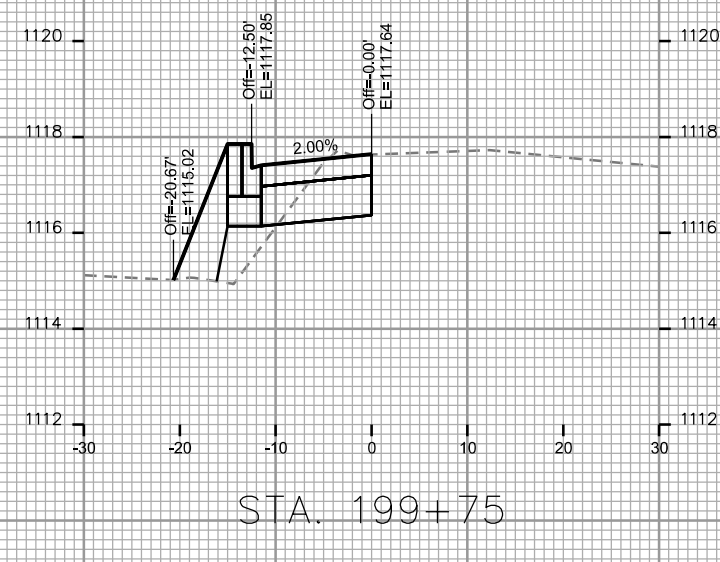
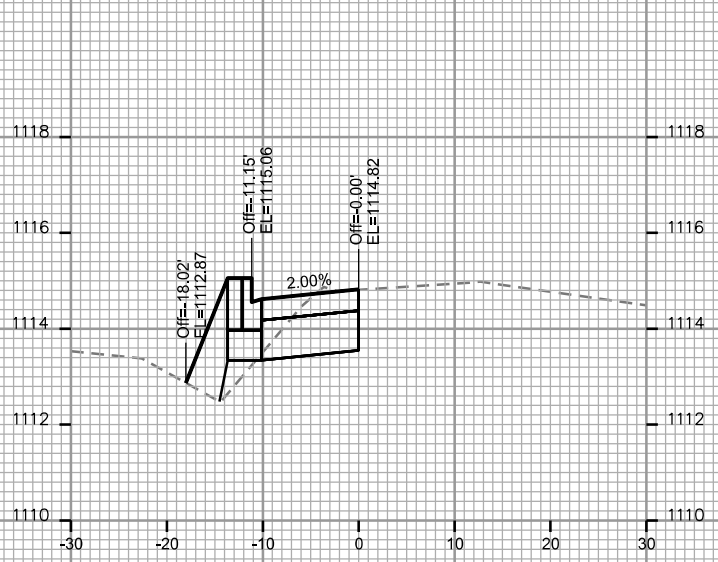
PLOT NAME: \_\_\_\_\_

REV. DATE: \_\_\_\_\_

ORIGINATOR: CITY OF MADISON - STREETS DIVISION

CROSS SECTIONS

S HIGH POINT RD CITY OF MADISON

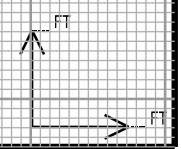
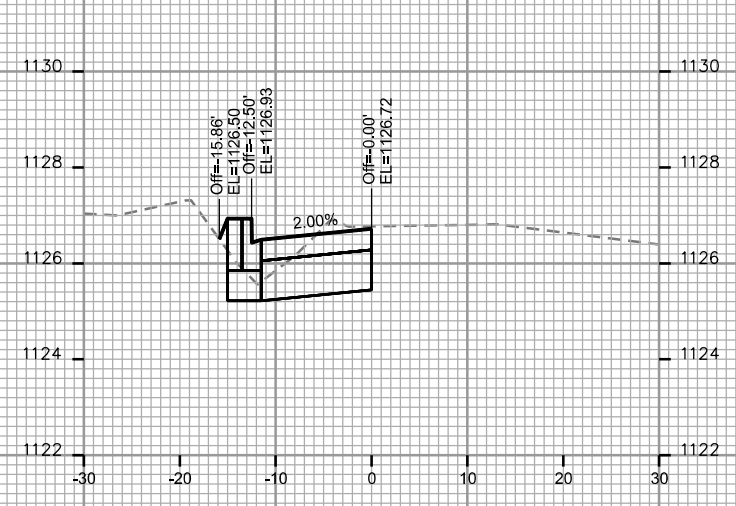
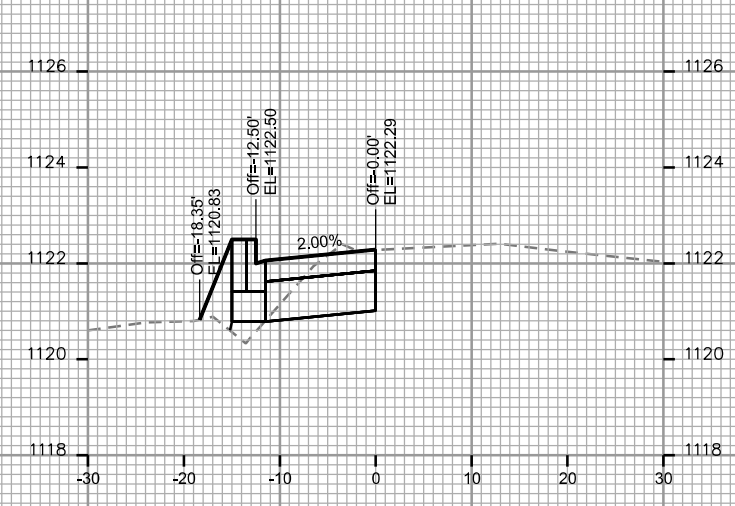
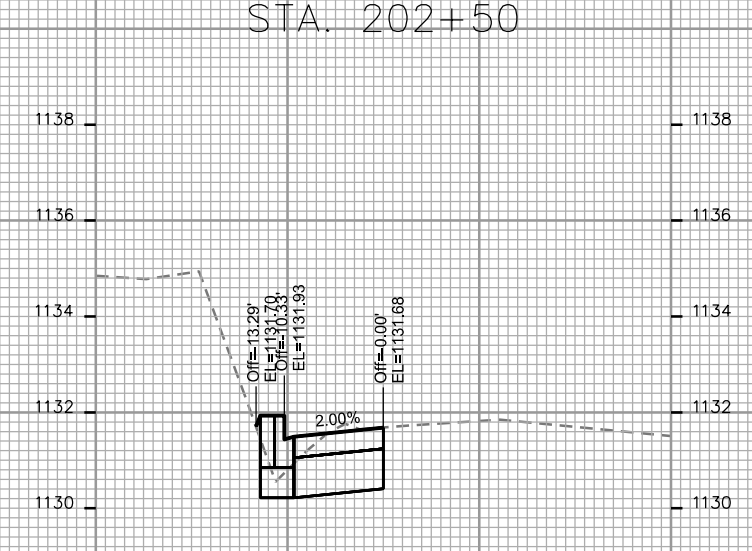
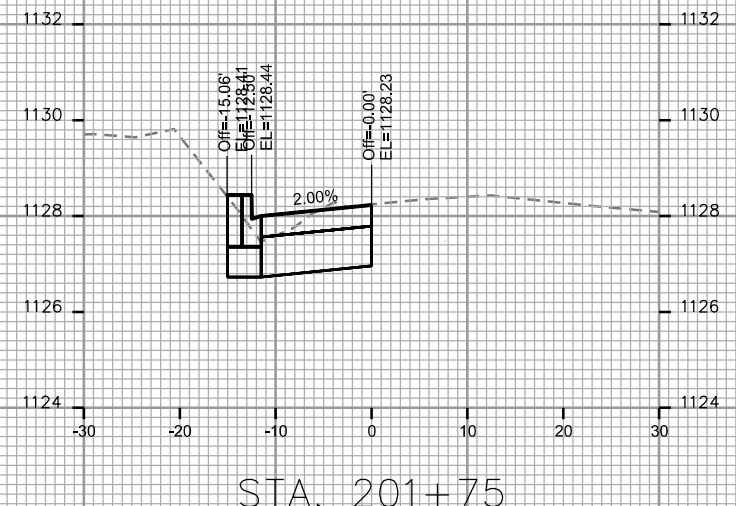
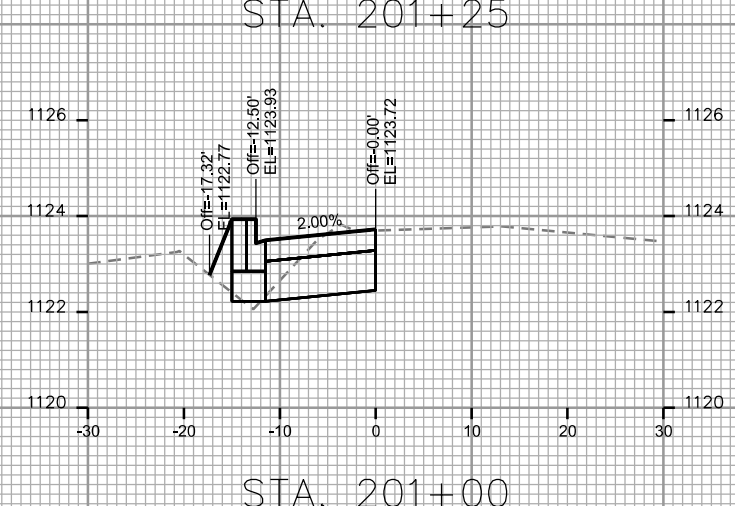
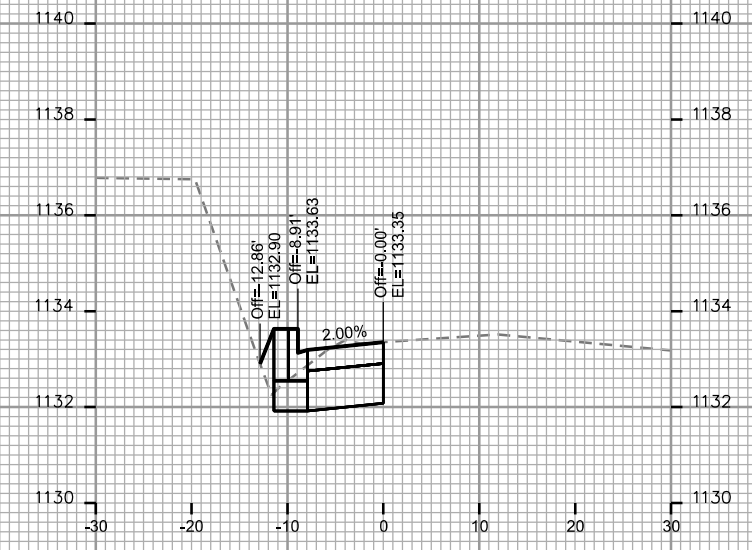
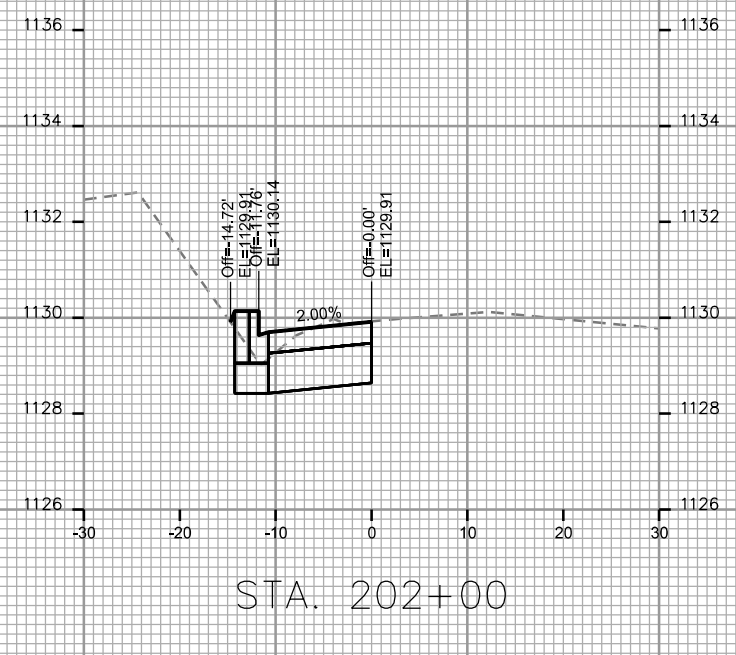
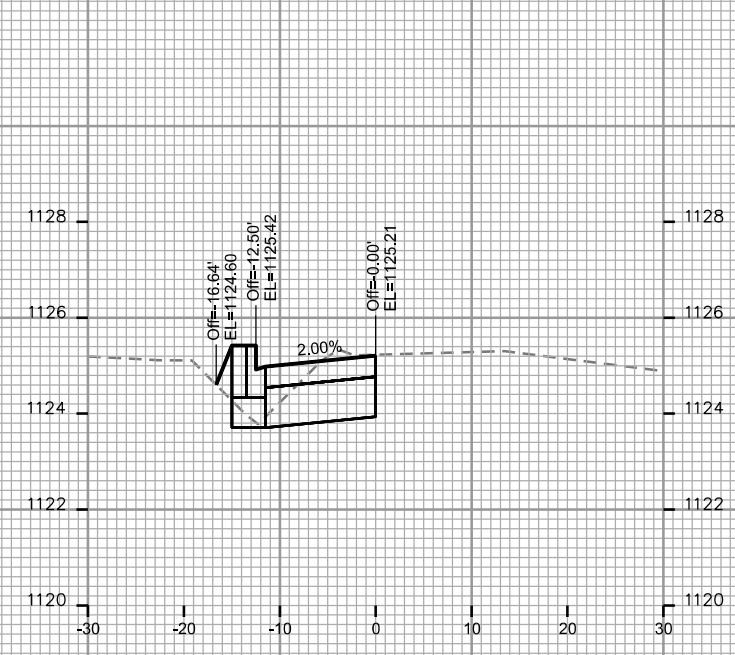


PLOT SCALE: \_\_\_\_\_

PLOT NAME: \_\_\_\_\_

REV. DATE: \_\_\_\_\_

ORIGINATOR: CITY OF MADISON - STREETS DIVISION



PLOT SCALE: \_\_\_\_\_

PLOT NAME: \_\_\_\_\_

REV. DATE: \_\_\_\_\_

ORIGINATOR: CITY OF MADISON - STREETS DIVISION

CROSS SECTIONS

S HIGH POINT RD CITY OF MADISON

PLOT SCALE: \_\_\_\_\_

PLOT NAME: \_\_\_\_\_

REV. DATE: \_\_\_\_\_

ORIGINATOR: CITY OF MADISON - STREETS DIVISION

