

1 LEVEL 5 ELECTRICAL PLAN
 SCALE: 1/16" = 1'-0"
 24' 0' 2' 8' 16' 32'

LINE WEIGHT KEY	
	ALL ITEMS INDICATED BY A DARK SOLID LINE ARE NEW
	ALL ITEMS INDICATED BY A LIGHT SOLID LINE ARE EXISTING TO REMAIN
	ALL ITEMS INDICATED BY A DARK DASHED LINE ARE EXISTING TO BE REMOVED OR RELOCATED.

GENERAL NOTES:

- REFER TO SHEET E000 FOR GENERAL PROJECT NOTES.
- ALL RACEWAY AND CONDUCTORS SERVING LIGHTING FROM NEW PANELS L1 AND L2 SHALL BE NEW.

- KEYED ELECTRICAL NOTES:**
- ◇ REMOVE EXISTING HID LUMINAIRE ALONG WITH ASSOCIATED BRANCH CIRCUIT AND RACEWAY.
 - ◇ INSTALL NEW LED LUMINAIRE. CONNECT TO NEW BRANCH CIRCUIT INDICATED.
 - ◇ NEW LED LUMINAIRE FED FROM EMERGENCY LIGHTING PANELBOARD. BRANCH CIRCUIT CONDUCTORS SHALL BE ROUTED WITHIN NEW DEDICATED RACEWAY COMPLYING WITH NEC 700.
 - ◇ REMOVE EXISTING HID LUMINAIRE AND INSTALL NEW LED LINEAR LUMINAIRE. PROVIDE NEW RACEWAY FROM NEAREST JUNCTION BOX TO NEW LUMINAIRE LOCATION. ASSUME 20 LINEAR FEET FOR BIDDING. TERMINATE NEW RACEWAY DIRECTLY ON LUMINAIRE HOUSING ASSEMBLY.
 - ◇ REMOVE EXISTING EXIT SIGN AND INSTALL NEW EXIT SIGN AS DIRECT REPLACEMENT. RECONFIGURE FLEXIBLE RACEWAY CONNECTION INTO NEW HOUSING ASSEMBLY AND MAKE FINAL WIRING CONNECTION.
 - ◇ MOUNT RECEPTACLE ABOVE DOOR IN STAIR WITH COVER (CAST IN-USE STYLE) AND PADLOCK HASP.

JSD Professional Services, Inc.
 • Engineers • Surveyors • Planners
 "BUILDING RELATIONSHIPS WITH A COMMITMENT TO CLIENT SATISFACTION THROUGH TRUST, QUALITY AND EXPERIENCE"
 • CIVIL ENGINEERING
 • SURVEYING & MAPPING
 • CONSTRUCTION SERVICES
 • WATER RESOURCES
 • PLANNING & DEVELOPMENT
 • TRANSPORTATION ENGINEERING
 • STRUCTURAL ENGINEERING
 • LANDSCAPE ARCHITECTURE
 MADISON REGIONAL OFFICE
 101 HORIZON DRIVE, SUITE 101
 VERONA, WISCONSIN 53593
 608.848.5060 PHONE | 608.848.2255 FAX
 MADISON | MILWAUKEE
 KENOSHA | APPLETON
 www.jsdinc.com

Henneman Engineering

Madison:
 1232 Fourier Drive, Suite 101
 Madison, Wisconsin 53717-1960
 T 608.833.7000 F 608.833.6996
 Email: info@henneman.com
 Website: http://www.henneman.com
 ©2013 Henneman Engineering, Inc.
 JOB NO. 13-8001

SERVICES PROVIDED TO:
CITY OF MADISON, PARKING UTILITY

PROJECT:
STATE STREET CAPITOL GARAGE RELIGHTING AND ELECTRICAL CONTROLS UPGRADE

PROJECT LOCATION:
 STATE STREET CAPITOL GARAGE
 214 N CARROLL ST.
 MADISON, WI 53703
 JSD PROJECT NO.: 13-5576
 CONTRACT NO.: 7910

DESIGN: HEI
 DRAWN: HEI
 APPROVED: HEI

ALTHOUGH EVERY EFFORT HAS BEEN MADE IN PREPARING THESE PLANS AND CHECKING THEM FOR ACCURACY, THE CONTRACTOR AND SUBCONTRACTORS MUST CHECK ALL DETAIL AND DIMENSIONS OF THEIR TRADE AND BE RESPONSIBLE FOR THE SAME.

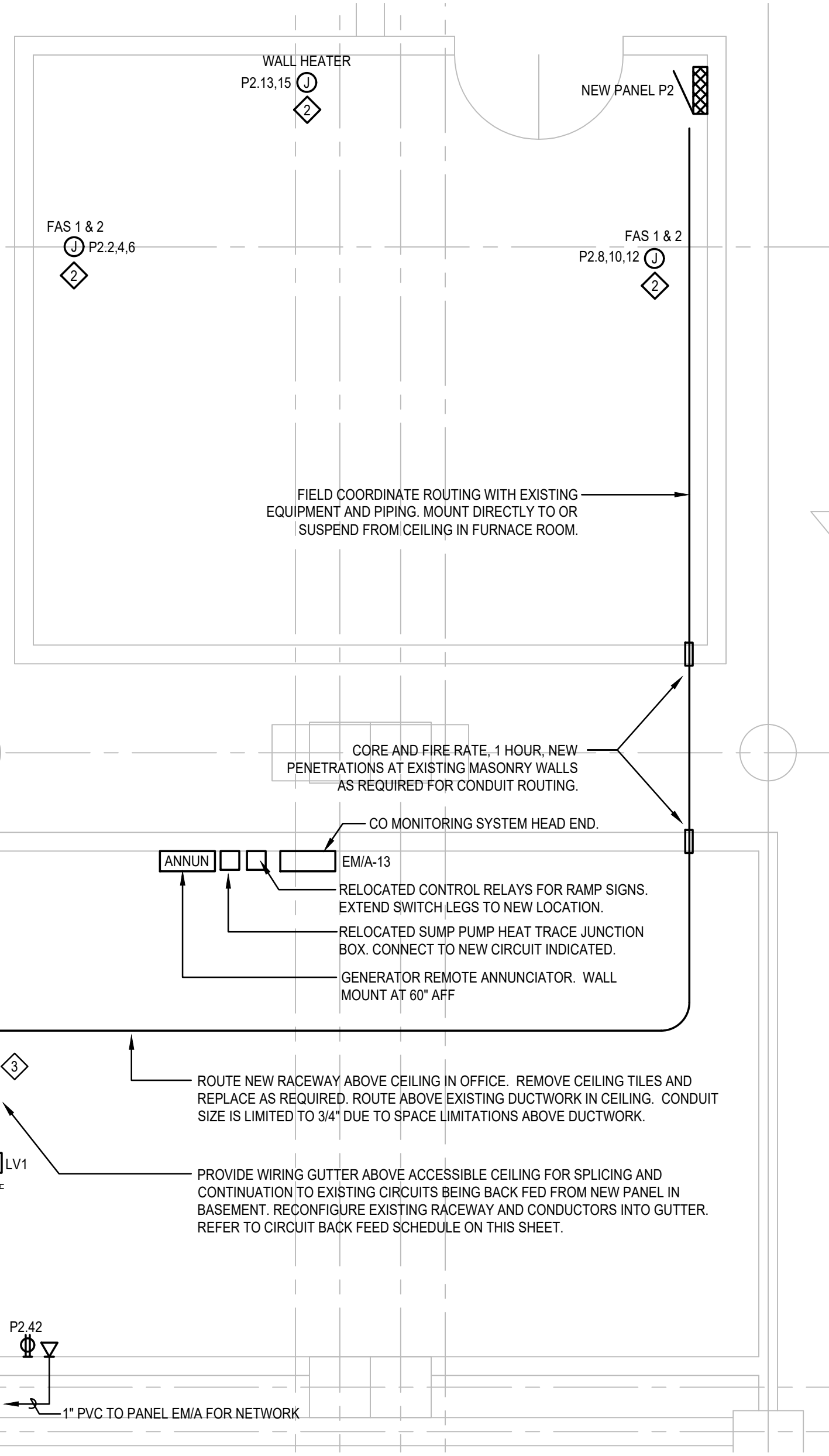
PLAN MODIFICATIONS:	DATE:

DIGGERS HOTLINE
 Toll Free (800) 242-8511
 Milwaukee Area (414) 259-1191
 Healy (Madison) (608) 840-2299
 www.DiggersHotline.com

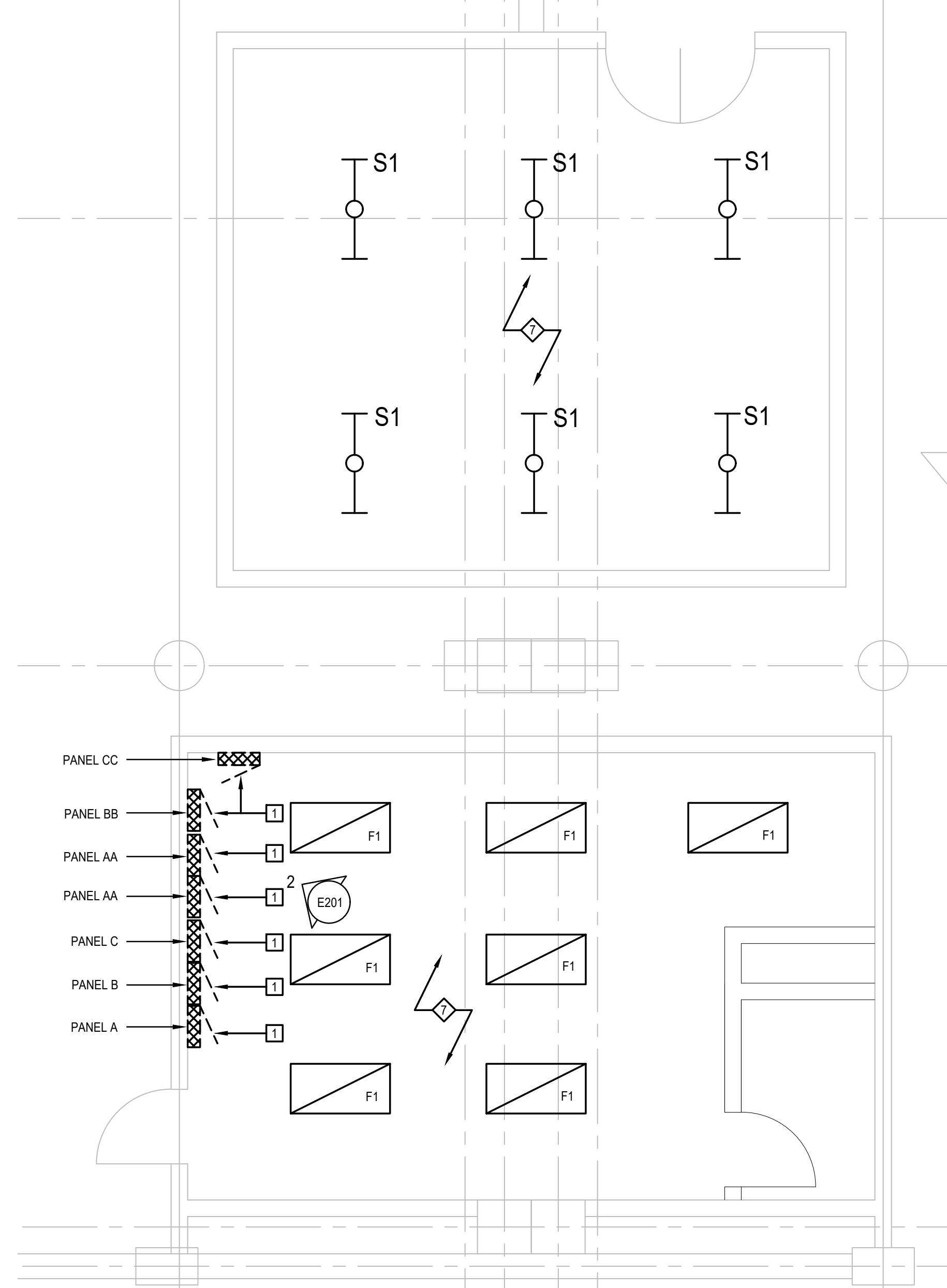
SHEET TITLE:
LEVEL 5 ELECTRICAL PLAN

SHEET NUMBER:
E105

ENTER



3 ENLARGED LEVEL 1 OFFICE POWER PLAN - ELECTRICAL
 SCALE: 1/4" = 1'-0"
 12" 0 1' 5' 10'



1 ENLARGED LEVEL 1 OFFICE POWER PLAN - ELECTRICAL
 SCALE: 1/4" = 1'-0"
 12" 0 1' 5' 10'

LINE WEIGHT KEY

	ALL ITEMS INDICATED BY A DARK SOLID LINE ARE NEW
	ALL ITEMS INDICATED BY A LIGHT SOLID LINE ARE EXISTING TO REMAIN
	ALL ITEMS INDICATED BY A DARK DASHED LINE ARE EXISTING TO BE REMOVED OR RELOCATED.

GENERAL NOTES:

- REFER TO SHEET E000 FOR GENERAL PROJECT NOTES.
- ANY DAMAGE, CAUSED BY CONSTRUCTION, TO THE EXISTING CEILING SYSTEM WITHIN THE OFFICE SHALL BE REPAIRED AT THE ELECTRICAL CONTRACTORS EXPENSE.

KEYED DEMOLITION NOTES:

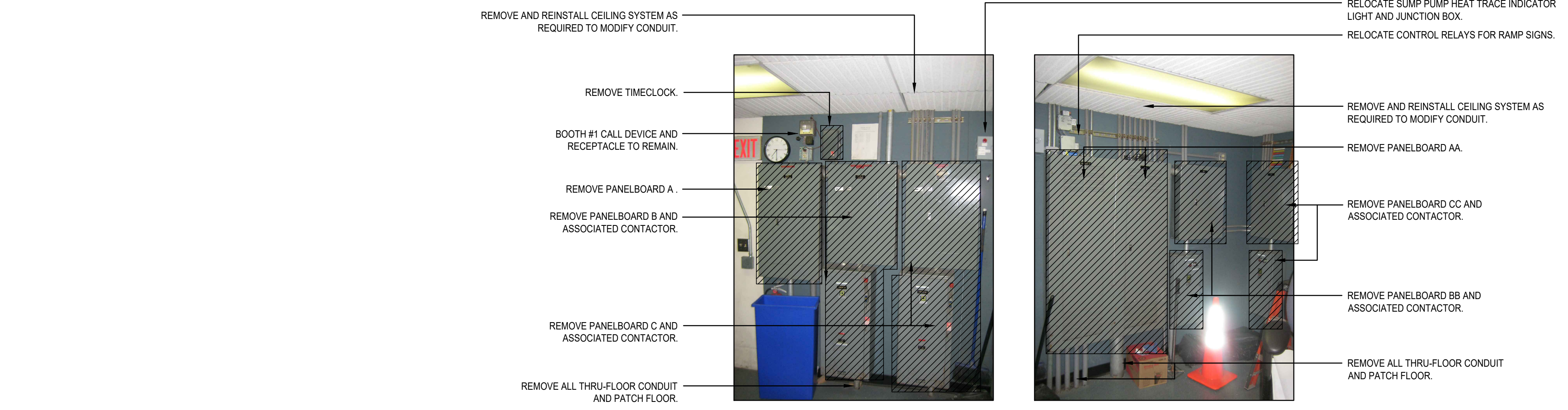
- REMOVE PANELBOARD AND ASSOCIATED CONTACTOR. REFER TO RISER DIAGRAM FOR FEEDER AND BRANCH CIRCUIT MODIFICATIONS.
- ALL LIGHTING AND DEVICES TO REMAIN UNLESS NOTED OTHERWISE.
- ELECTRICAL CONTRACTOR SHALL SUBCONTRACT WITH A PLUMBING CONTRACTOR FOR WATER PIPING RECONFIGURATION. EXISTING 1" WATER PIPE, WITH INSULATION, SHALL BE CUT AND EXTENDED AS SHOWN TO PROVIDE NEC CLEARANCE ABOVE ELECTRICAL EQUIPMENT.

KEYED NEW WORK NOTES:

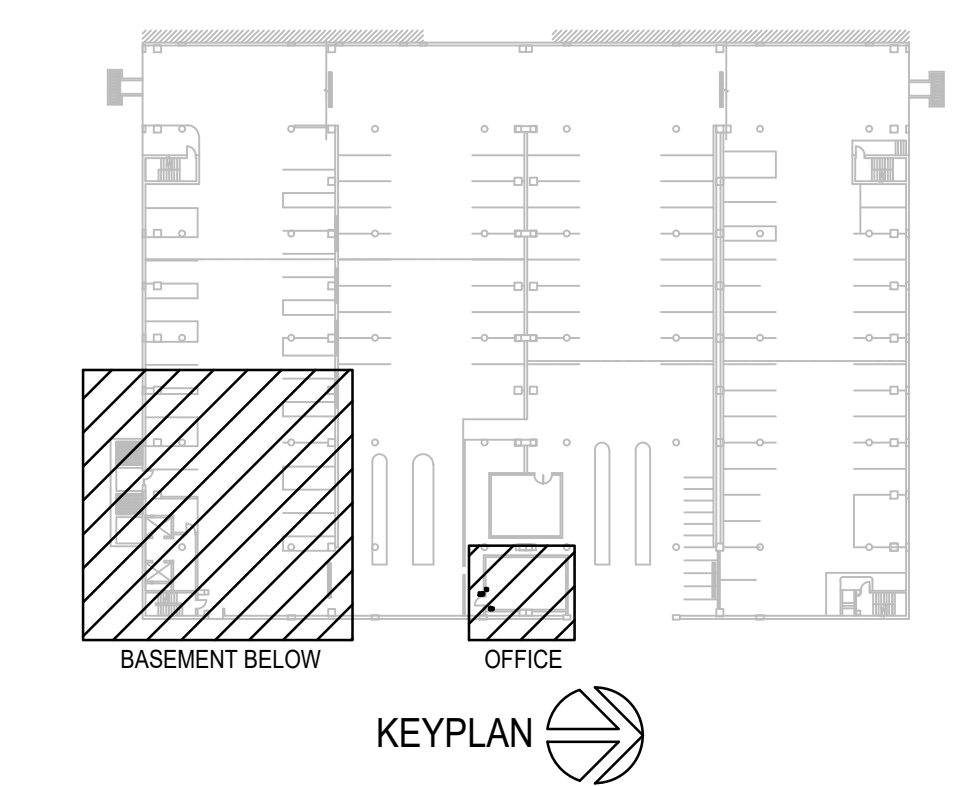
- NO ELECTRICAL EQUIPMENT, DEVICES OR CONDUIT ON THIS WALL BELOW CEILING ON OFFICE SIDE. FUTURE WINDOWS TO BE INSTALLED.
- BACK FEED EXISTING EQUIPMENT DISCONNECTS WITH CIRCUITS INDICATED.
- IN ADDITION TO THE BACK FEED CIRCUITS NOTED IN THE LEVEL 1 OFFICE BACK FEED CIRCUIT SCHEDULE, PROVIDE 10 SPARE BRANCH CIRCUITS IN THE GUTTER FOR UNSPECIFIED USE.
- UL924 SWITCHING RELAY DEVICE FOR CONTROL TO TOP DECK EMERGENCY LIGHTING CIRCUIT. REFER TO DETAIL ON E500.
- PROVIDED 120V CONTROL CIRCUIT TO EACH LIGHTING PANEL FROM PANEL P1.
- CO MONITORING ALARM HORN.
- ONE FOR ONE REPLACEMENT OF EXISTING LIGHTING FIXTURES AS SHOWN. CONNECT TO EXISTING CONTROLS.

LEVEL 1 OFFICE BACK FEED CIRCUIT SCHEDULE:

P2.1,3,5 - OFFICE HEATER (AA2-31,33,35)
P2.7,9,11 - OFFICE HEATER (AA2-37,39,41)
P2.17,19 - BATHROOM HEATER (AA2-10,12)
P2.14 - RECEPTACLE (A-9)
P2.16 - RECEPTACLE (A-11)
P2.18 - RECEPTACLE (A-23)
P2.20 - RECEPTACLE (A-25)
P2.22 - RECEPTACLE (A-27)
P2.24 - RECEPTACLE (A-14)
P2.26 - RECEPTACLE (A-16)
P2.28 - RECEPTACLE (A-18)
P2.30 - PAY STATION (A-28)
P2.32 - PAY STATION (A-30)
P2.34 - AD SIGNS (A-32)
P2.36 - AD SIGNS (A-34)
P2.38 - AD SIGNS (A-36)
P2.40 - AD SIGNS (A-38)
P2.42 - RECEPTACLE (AA-27)
P2.44 - RECEPTACLE (AA-29)
P2.46 - WATER COOLER (AA-25)
P2.48 - BATHROOM HEATER (AA-35)
P2.50 - NETWORK (AA-37)
P2.52 - FULL SIGN (AA-39)
P2.54 - TERRACE SIGN (AA-41)
P2.21 - OFFICE H2O HEATER (AA2-1)
P2.25 - SUB BASEMENT HEAT TAPE (AA2-7)
P2.29 - SUB BASEMENT HEAT TAPE (AA2-9)
P2.33 - RECEPTACLE (AA2-6)
P2.35 - SOUTH STAIR (AA-1)
P2.37 - WEST STAIR (AA-3)
P2.39 - NORTH STAIR (AA-5)
P2.41 - EAST STAIR (AA-7)
P2.43 - SOUTH STAIR (AA-9)
P2.45 - SOUTH ROOF RECEPT. (AA-11)
P2.47 - NORTH ROOF RECEPT. (AA-8)
P2.49 - EAST STAIR (AA-6)
P2.51 - RECEPTACLE (AA-18)
P2.53 - RECEPTACLE (AA-20)
P2.55 - FAS FAN (AA-24)



2 LEVEL 1 OFFICE SOUTH ELEVATION - ELECTRICAL DEMOLITION
 NO SCALE



JSD Professional Services, Inc.
 Engineers • Surveys • Planners
 "BUILDING RELATIONSHIPS WITH A COMMITMENT TO CLIENT SATISFACTION THROUGH TRUST, QUALITY AND EXPERIENCE"
 • CIVIL ENGINEERING
 • SURVEYING & MAPPING
 • CONSTRUCTION SERVICES
 • WATER RESOURCES
 • PLANNING & DEVELOPMENT
 • TRANSPORTATION ENGINEERING
 • STRUCTURAL ENGINEERING
 • LANDSCAPE ARCHITECTURE
 MADISON REGIONAL OFFICE
 101 HORIZON DRIVE, SUITE 101
 VERONA, WISCONSIN 53593
 608.848.5060 PHONE | 608.848.2255 FAX
 MADISON | MILWAUKEE
 KENOSHA | APPLETON
 www.jsdinc.com

Henneman Engineering
 Madison: 1232 Courier Drive, Suite 101
 Madison, Wisconsin 53717-1960
 T 608.833.7000 F 608.833.6996
 Email: info@henneman.com
 Website: http://www.henneman.com
 ©2010 Henneman Engineering Inc.
 JOB NO. 13-8001

SERVICES PROVIDED TO:
CITY OF MADISON, PARKING UTILITY
 215 MARTIN LUTHER KING JR. BLVD
 MADISON, WISCONSIN 53701-2986

PROJECT:
STATE STREET CAPITOL GARAGE RELIGHTING AND ELECTRICAL CONTROLS UPGRADE

PROJECT LOCATION:
 STATE STREET CAPITOL GARAGE
 214 N CARROLL ST.
 MADISON, WI 53703
 JSD PROJECT NO.: 13-5576
 CONTRACT NO.: 7910

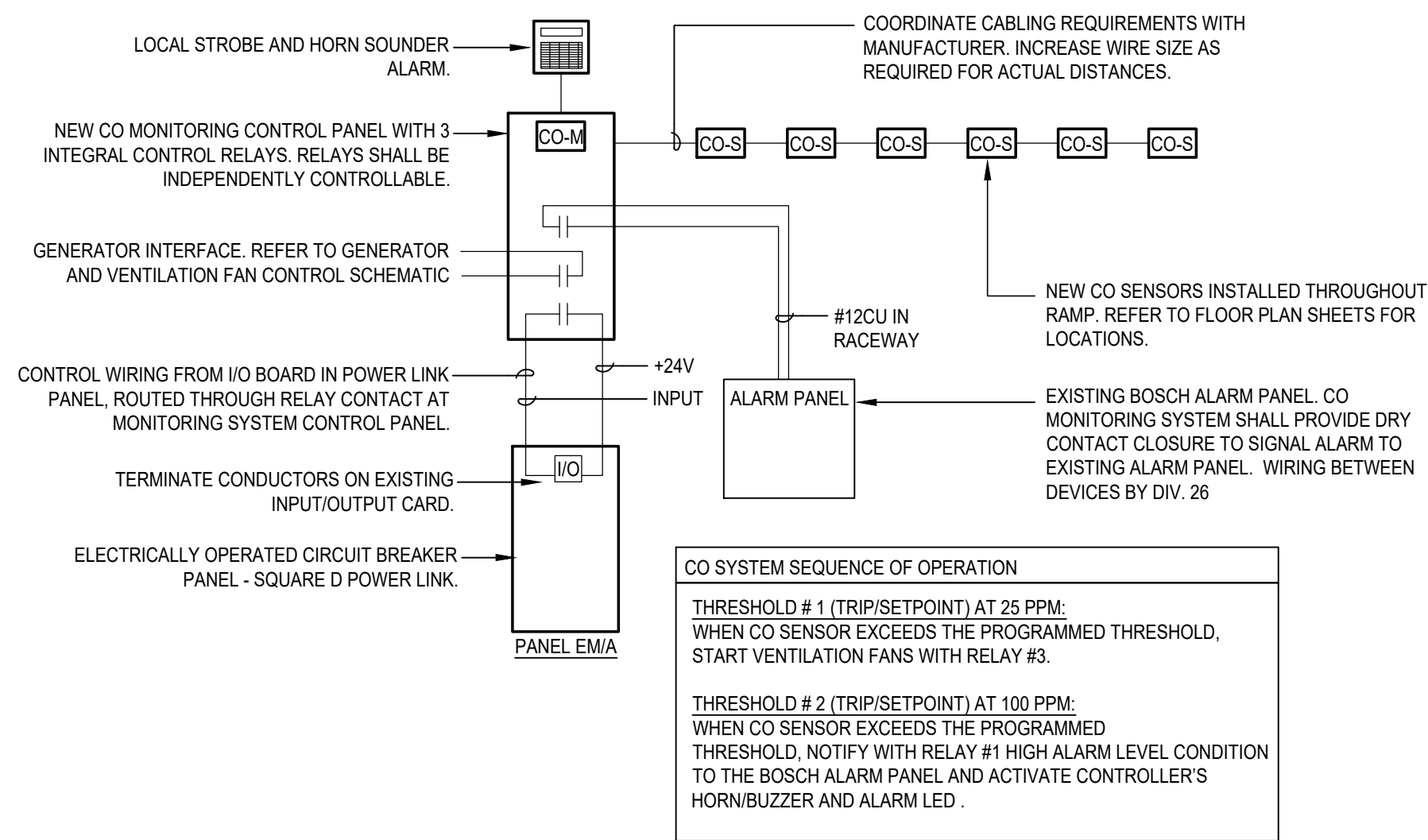
REAL SIGNATURE:
 DESIGNED: HEI
 DRAWN: HEI
 APPROVED: HEI
 PLAN MODIFICATIONS: DATE:

ALTHOUGH EVERY EFFORT HAS BEEN MADE IN PREPARING THESE PLANS AND CHECKING THEM FOR ACCURACY, THE CONTRACTOR AND SUBCONTRACTORS MUST CHECK ALL DETAIL AND DIMENSIONS OF THEIR TRADE AND BE RESPONSIBLE FOR THE SAME.

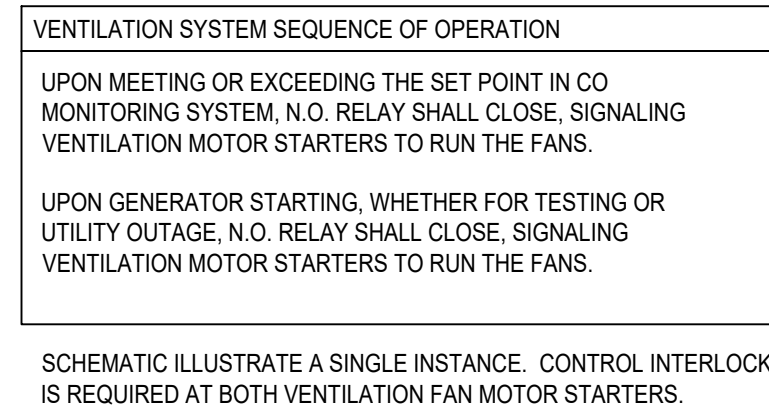
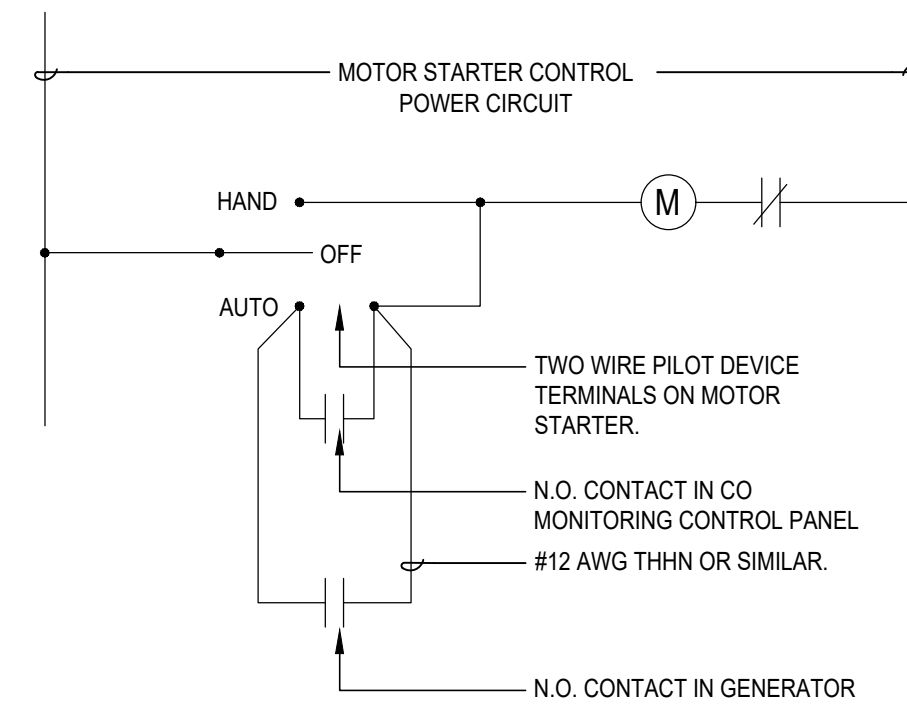
DIGGERS HOTLINE
 Toll Free (800) 242-8511
 Milwaukee Area (414) 259-1181
 Hearing Impaired TDD (800) 543-2289
 www.DiggersHotline.com

SHEET TITLE:
ENLARGED ELECTRICAL PLANS

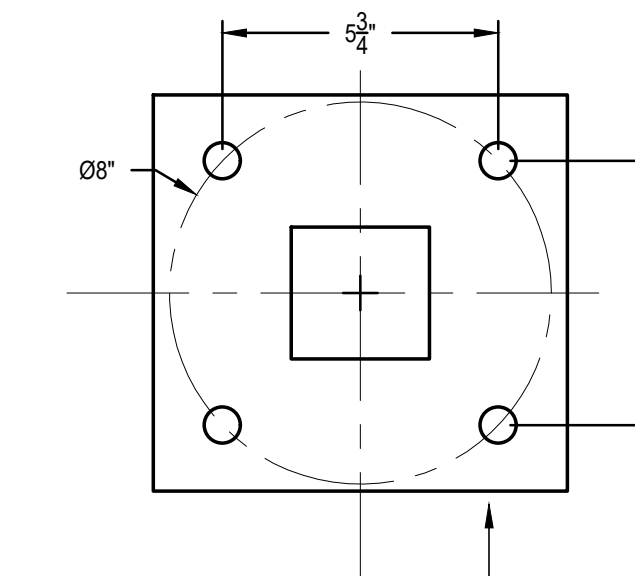
SHEET NUMBER:
E201



9 CO MONITORING SYSTEM SCHEMATIC
NO SCALE



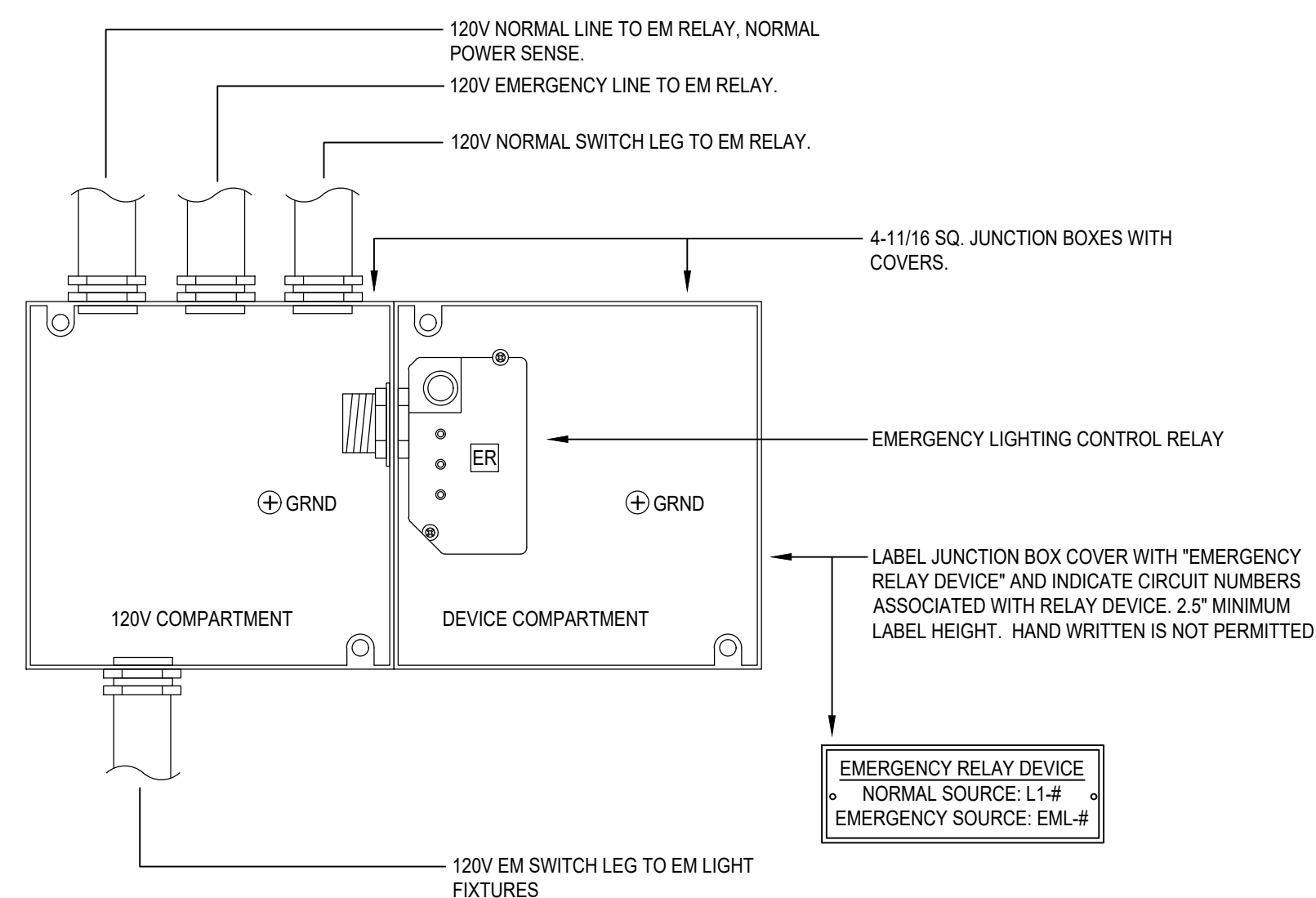
8 VENTILATION FAN INTERLOCKING SCHEMATIC
NO SCALE



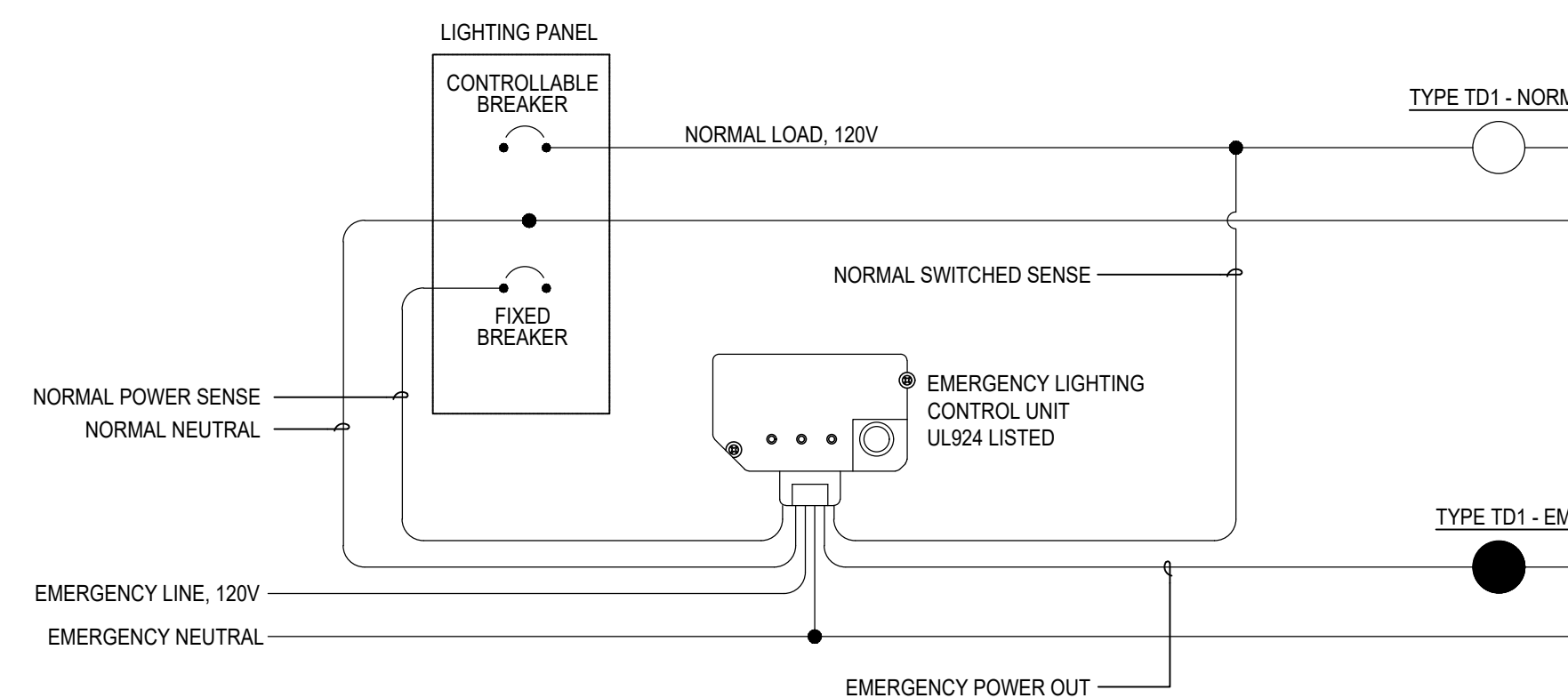
5 CUSTOM BASE PLATE BOLT MOUNTING PATTERN DETAIL
NO SCALE



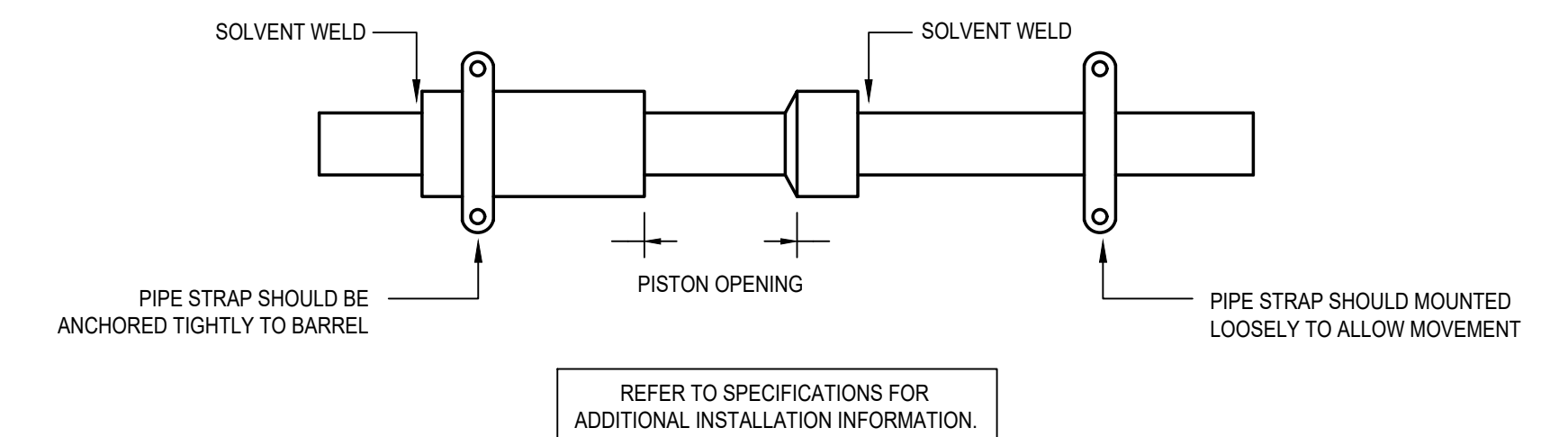
4 EXISTING SWITCHBOARD ELEVATION
NO SCALE



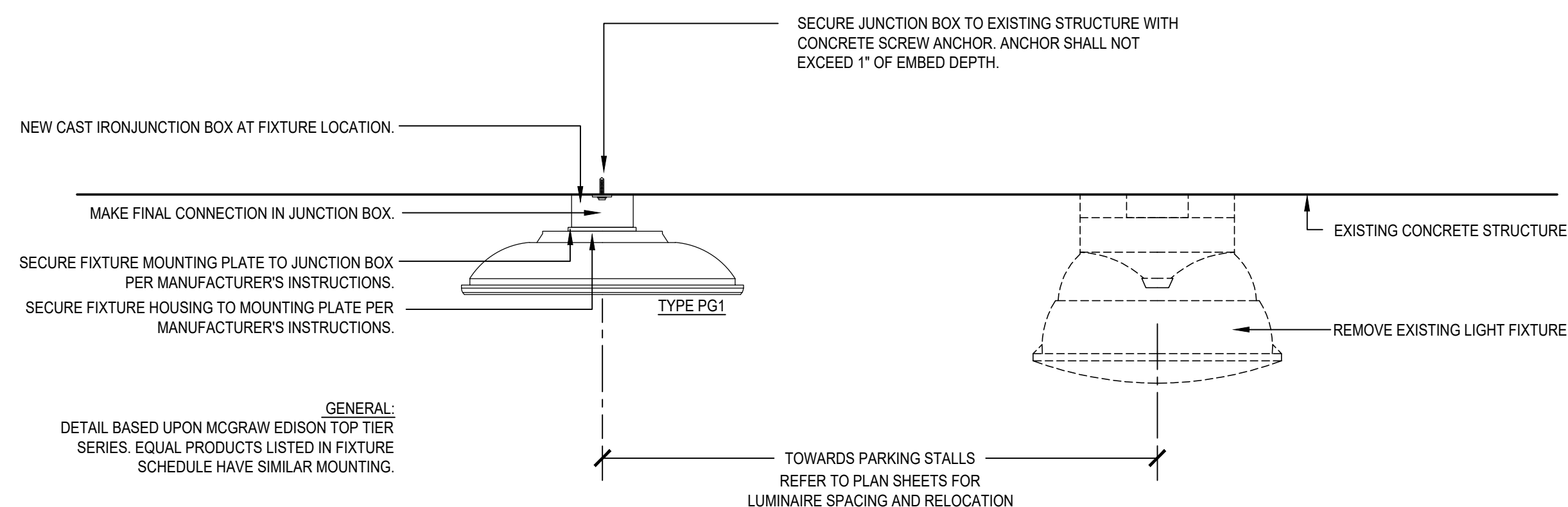
7 EMERGENCY LIGHTING CONTROL RELAY MOUNTING DETAIL
NO SCALE



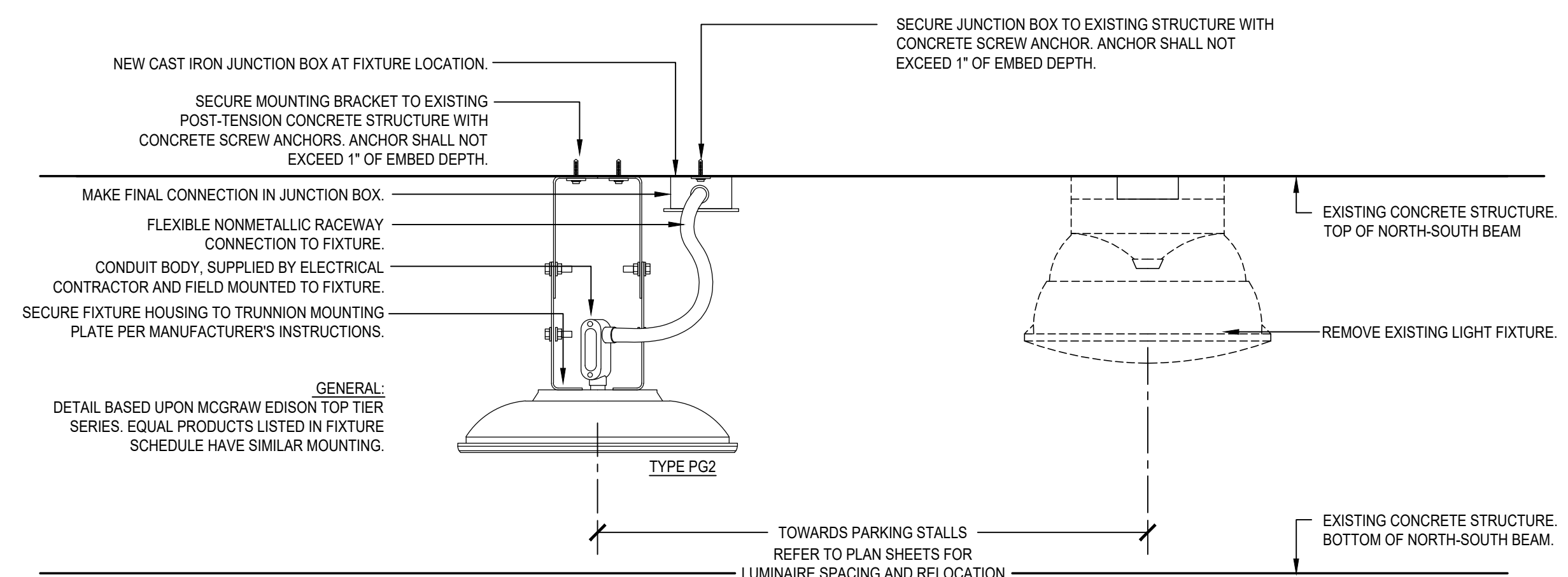
6 TOP DECK EMERGENCY LIGHTING CONTROL SCHEMATIC
NO SCALE



3 RACEWAY EXPANSION FITTING DETAIL
NO SCALE



2 FIXTURE TYPE PG1 MOUNTING AT LEVELS: L1 & L2
NO SCALE



1 FIXTURE TYPE PG2 MOUNTING AT LEVELS: 3, 4 & 5
NO SCALE

LIGHTING FIXTURE SCHEDULE																	
MARK	FIXTURE			WATTS	TYPE	LAMP			BALLAST/DRIVER			MOUNTING			MANUFACTURER	MODEL NUMBER	REMARKS
	TYPE	DIFFUSER				TEMP	CRI	QTY	TYPE	BF	INPUT WATTS	VOLTAGE	LOCATION	CONFIGURATION			
PG1	LED PARKING GARAGE SURFACE MOUNT WIDE DISTRIBUTION	HIGH IMPACT HIGH PERFORMANCE ACRYLIC	58	LED	4000K	70	6,848 LUMENS	ELD	--	77	120	CEILING	SURFACE	CONCRETE	KENALL LIGHTING MCGRAW-EDISON HOLOPHANE	TOP DECK SERIES TT.C4.LED.E1.WQ.GM PLED2 SERIES	FURNISH WITH MOUNTING ACCESSORIES AS REQUIRED.
PG2	LED PARKING GARAGE TRUNNION MOUNT WIDE DISTRIBUTION	HIGH IMPACT HIGH PERFORMANCE ACRYLIC	58	LED	4000K	70	5,782 LUMENS	ELD	--	77	120	CEILING	SURFACE	CONCRETE	KENALL LIGHTING MCGRAW-EDISON HOLOPHANE	TOP DECK SERIES TT.C4.LED.E1.WQ.TMB.GM PLED2 SERIES	FURNISH WITH TRUNNION MOUNTING BRACKET PER DETAIL.
PG4	LED PARKING GARAGE SURFACE MOUNT MEDIUM DISTRIBUTION	HIGH IMPACT HIGH PERFORMANCE ACRYLIC	34	LED	4000K	70	4,760 LUMENS	ELD	--	37	120	CEILING	SURFACE	CONCRETE	KENALL LIGHTING MCGRAW-EDISON HOLOPHANE	TOP DECK SERIES TT.C2.LED.E1.MQ.GM PLED2 SERIES	FURNISH WITH MOUNTING ACCESSORIES AS REQUIRED.
F1	RECESSED LED 2X4 ARCHITECTURAL TROFFER	RIBBED ACRYLIC	34	LED	4000K	80	4000 LUMENS	ELD	--	34	120	CEILING	RECESSED	ACT	FOCAL POINT METALLUX LITHONIA	AMICA SERIES 24CZ.LD4.40.UNV.LB40.CD.1 BLT SERIES	
S1	48" LED LINEAR ENCLOSED WET LOCATION INDUSTRIAL	IMPACT RESISTANT DIFFUSE POLYCARBONATE	39	LED	4100K	70	2,975 LUMENS	ELD	--	39	120	CEILING	SURFACE	CONCRETE	KENALL LIGHTING HOLOPHANE LUMINAIRE LIGHTING	MLH45 SERIES EVT4.39.LED.SYM.TS.L9 SERIES	FURNISH WITH OPTIONS AND ACCESSORIES AS REQUIRED FOR MOUNTING ON EXISTING SURFACES WITH EXPOSED CONDUIT.
S2	48" LED LINEAR ENCLOSED WET LOCATION INDUSTRIAL WITH INTEGRAL OCCUPANCY & PHOTO SENSOR	IMPACT RESISTANT DIFFUSE POLYCARBONATE	39	LED	4100K	70	2,975 LUMENS	ELD	--	39	120	CEILING	SURFACE	CONCRETE	KENALL LIGHTING HOLOPHANE LUMINAIRE LIGHTING	MLH45 SERIES EVT4.39.LED.SYM.PC.OS.TS.L9 SERIES	FURNISH WITH OPTIONS AND ACCESSORIES AS REQUIRED FOR MOUNTING ON EXISTING SURFACES WITH EXPOSED CONDUIT. FURNISH WITH COLD WEATHER OCCUPANCY AND DAYLIGHT SENSORS.
S3	48" LED LINEAR ENCLOSED WET LOCATION INDUSTRIAL EXISTING TO BE RELOCATED	--	--	--	--	--	--	--	--	--	120	CEILING	SURFACE	CONCRETE	HOLOPHANE	EV74 SERIES	
S4	48" LED LINEAR ENCLOSED WET LOCATION INDUSTRIAL WITH INTEGRAL OCCUPANCY	IMPACT RESISTANT DIFFUSE POLYCARBONATE	39	LED	4100K	70	2,975 LUMENS	ELD	--	39	120	CEILING	SURFACE	CONCRETE	KENALL LIGHTING HOLOPHANE LUMINAIRE LIGHTING	MLH45 SERIES EVT4.39.LED.SYM.OS.TS.L9 SERIES	FURNISH WITH OPTIONS AND ACCESSORIES AS REQUIRED FOR MOUNTING ON EXISTING SURFACES WITH EXPOSED CONDUIT. FURNISH WITH COLD WEATHER OCCUPANCY SENSORS.
TD1	LED EXTERIOR AREA SITE POLE MOUNTED TYPE 4 DISTRIBUTION - 2 HEAD	CLEAR GLASS	210	LED	4100K	70	16,330 LUMENS PER HEAD	ELD	--	420	120	TOP DECK	SURFACE	POLE	LITHONIA GARDCO MCGRAW-EDISON	D SERIES P32.A2.3.4.210LA.NW.UNV.BLP VTS LED SERIES	TWO HEADS AT 180 DEGREES
TD2	LED EXTERIOR AREA SITE POLE MOUNTED TYPE 4 DISTRIBUTION - 3 HEAD	CLEAR GLASS	210	LED	4100K	70	16,330 LUMENS PER HEAD	ELD	--	630	120	TOP DECK	SURFACE	POLE	LITHONIA GARDCO MCGRAW-EDISON	D SERIES P32.A2.3.4.210LA.NW.UNV.BLP VTS LED SERIES	THREE HEADS AT 90 DEGREES
W1	LED EXTERIOR WALL PACK FULL CUTOFF OPTIC SURFACE MOUNT	CLEAR GLASS	35	LED	4100K	70	3,135 LUMENS	ELD	--	35	120	WALL	SURFACE	CONCRETE	LITHONIA GARDCO MCGRAW-EDISON	D SERIES 121.MT.35LA-350.NW.UNV.BLP 1ST TRAPEZOID SERIES	
W2	LED EXTERIOR WALL PACK SURFACE MOUNT	MICROPRISMATIC DIFFUSION GLASS	37	LED	4000K	75	2,888 LUMENS	ELD	--	37	120	WALL	SURFACE	CONCRETE	RAB LIGHTING	SLIM37N	
W3	LED JELLY JAR WALLPACK W/ GUARD	CLEAR GLASS	11	LED	4000K	70	757 LUMENS	ELD	--	11	120	WALL	SURFACE	CONCRETE	HUBBELL	VWGL-1	
X1	LED EXIT SIGN SINGLE FACE WHITE HOUSING, RED LETTERS	IMPACT RESISTANT POLYCARBONATE	2.7	LED	--	--	--	--	--	--	120	WALL	SURFACE	CONCRETE	LITHONIA SURE-LITES ISOLITE	LV SERIES UX SERIES MAX SERIES	

GENERAL NOTES:
A. REFER TO INTERIOR AND EXTERIOR LIGHTING SPECIFICATIONS FOR ADDITIONAL INFORMATION REGARDING FIXTURE, BALLAST OR DRIVER REQUIREMENTS AND INSTALLATION REQUIREMENTS.
B. NOTED LUMEN QUANTITY IS DELIVERED LUMEN OUTPUT
C. NOTED DIMMING RANGE INDICATES MINIMUM PARAMETERS. LUMINAIRES WITH GREATER DIMMING RANGE ARE PERMITTED.
D. UNLESS NOTED AS CAMPUS STANDARD, FIXTURES NOTED IN THIS SCHEDULE ARE TO ESTABLISH A BASIS OF DESIGN. PRODUCTS OTHER THAN THOSE LISTED IN THE SCHEDULE ARE PERMITTED SUBJECT TO MEETING THE REQUIREMENTS OF THE SCHEDULED FIXTURE'S QUALITY, PERFORMANCE, ENERGY, AESTHETICS, DIMENSIONS, ETC...

ABBREVIATIONS:
ELD - ELECTRONIC LED DRIVER OR POWER SUPPLY
EPS - ELECTRONIC PROGRAM START FLUORESCENT BALLAST
SD - DUAL CIRCUIT (SWITCH LEG) STEP DIMMING BALLAST OR DRIVER: 0/50/100
DIM - DIMMING
0-10V - ZERO TO TEN VOLT DC DIMMING FEATURE
FDB - FLUORESCENT DIMMING BALLAST
GWB - GYPSUM WALL BOARD, DRYWALL
ACT - ACOUSTICAL CEILING TILE IN SUSPENDED GRID SYSTEM, ACCESSIBLE
LMNS - LUMENS
BF - BALLAST FACTOR
ECO - LUTRON ECOSYSTEM COMPATIBLE BALLAST
CMU - CONCRETE MASONRY BLOCK
TBD - TO BE DETERMINED

NOTES:
1.

LOW VOLTAGE SENSOR CONTROL SCHEDULE					
PLAN DESIGNATION	LOCATION / DESCRIPTION	INPUT DEVICE	DEVICE FUNCTION	SEQUENCE OF OPERATION	ASSIGNED CHANNEL(S)
PCA	LEVEL 1 PARKING, SECTION 1F / DAYLIGHT ZONE	PHOTOSENSOR	TOGGLE ON/OFF	S01	ON/OFF: TBD
PCB	LEVEL 1 PARKING, SECTION 1A / DAYLIGHT ZONE	PHOTOSENSOR	TOGGLE ON/OFF	S01	ON/OFF: TBD
PCC	LEVEL 1 EAST ENTRY	PHOTOSENSOR	TOGGLE ON/OFF	S01	ON/OFF: TBD
PCD	LEVEL 1 WEST ENTRY	PHOTOSENSOR	TOGGLE ON/OFF	S01	ON/OFF: TBD
PCE	TOP DECK	PHOTOSENSOR	TOGGLE ON/OFF	S01	ON/OFF: TBD

SEQUENCE OF OPERATION:
S01: PHOTOSENSOR SENSOR SHALL CONTINUOUSLY MONITOR THE TOTAL SPACE ILLUMINATION LEVEL. THE SENSOR SHALL SIGNAL THE LIGHTING CONTROL SYSTEM TO AUTOMATICALLY ADJUST ELECTRIC LIGHTS AS SETPOINT THRESHOLDS ARE ACHIEVED. THE TARGET ILLUMINATION LEVEL IS 3 FOOTCANDLES, MEASURED AT THE FLOOR WITH ILLUMINANCE METER. WHEN ILLUMINATION LEVELS FALL BELOW THE ON SETPOINT THRESHOLD OF 3 FOOTCANDLES FOR 60 SECONDS, THE SENSOR SHALL SIGNAL THE LIGHTING CONTROL SYSTEM TO CLOSE THE ASSIGNED BREAKERS, TURNING LIGHTS ON. WHEN THE ILLUMINATION LEVELS RISE ABOVE THE OFF SETPOINT THRESHOLD OF 3 FOOTCANDLES FOR 5 MINUTES, THE SENSOR SHALL SIGNAL THE LIGHTING CONTROL SYSTEM TO OPEN THE ASSIGNED BREAKERS, TURNING LIGHT OFF. ILLUMINANCE LEVELS INDICATED ARE ACTUAL MEASURED LEVELS AND MAY NOT CORRESPOND WITH THE DAYLIGHT SENSOR READINGS. SENSOR SHALL BE CALIBRATED TO COINCIDE WITH ACTUAL LEVELS INDICATED.

LOW VOLTAGE SWITCH STATION CONTROL SCHEDULE				
PLAN DESIGNATION	LOCATION / DESCRIPTION	BUTTON	BUTTON FUNCTION	ASSIGNED CHANNEL(S)
Iv1	PARKING OFFICE / DAYLIGHT OVERRIDE	1	SCENE RECALL	TBD

JSD Professional Services, Inc.
Engineers • Surveyors • Planners

"BUILDING RELATIONSHIPS WITH A COMMITMENT TO CLIENT SATISFACTION THROUGH TRUST, QUALITY AND EXPERIENCE"

- CIVIL ENGINEERING
- SURVEYING & MAPPING
- CONSTRUCTION SERVICES
- WATER RESOURCES
- PLANNING & DEVELOPMENT
- TRANSPORTATION ENGINEERING
- STRUCTURAL ENGINEERING
- LANDSCAPE ARCHITECTURE

MADISON REGIONAL OFFICE
161 HORIZON DRIVE, SUITE 101
VERONA, WISCONSIN 53593
608.848.5060 PHONE | 608.848.2255 FAX

MADISON | MILWAUKEE
KENOSHA | APPLETON
www.jsdinc.com

Henneman Engineering

Madison: 1232 Fourier Drive, Suite 101
Madison, Wisconsin 53717-1960
T 608.833.7000 F 608.833.6996
Email: info@henneman.com
Website: http://www.henneman.com
© 2010 Henneman Engineering, Inc.
JOB NO. 13-8001

SERVICES PROVIDED TO:
CITY OF MADISON, PARKING UTILITY

215 MARTIN LUTHER KING JR. BLVD
MADISON, WISCONSIN 53701-2986

PROJECT:
STATE STREET CAPITOL GARAGE RELIGHTING AND ELECTRICAL CONTROLS UPGRADE

PROJECT LOCATION:
STATE STREET CAPITOL GARAGE
214 N CARROLL ST.
MADISON, WI 53703

JSD PROJECT NO.: 13-5576
CONTRACT NO.: 7910

DESIGN: HEI
DRAWN: HEI
APPROVED: HEI

PLAN MODIFICATIONS: DATE:

ALTHOUGH EVERY EFFORT HAS BEEN MADE IN PREPARING THESE PLANS AND CHECKING THEM FOR ACCURACY, THE CONTRACTOR AND SUBCONTRACTORS MUST CHECK ALL DETAIL AND DIMENSIONS OF THEIR TRADE AND BE RESPONSIBLE FOR THE SAME.

DIGGERS & HOTLINE

Toll Free (800) 242-8511
Madison Area (614) 259-1181
Heathington, TX (817) 543-2289
www.DiggersandHotline.com

SHEET TITLE:
ELECTRICAL SCHEDULES

SHEET NUMBER:
E600

BRANCH PANEL NAME										BRANCH PANEL NAME										BRANCH PANEL NAME										BRANCH PANEL NAME														
EMB										EMA										P1										P2														
120/ 208										120/ 208										120/ 208										120/ 208														
3										3										3										3														
4										4										4										4														
100 A										225 A										225 A										225 A														
MLO										MLO										MLO										MLO														
22,000										22,000										22,000										22,000														
CONTROLLABLE BREAKER TYPE										CONTROLLABLE BREAKER TYPE										CONTROLLABLE BREAKER TYPE										CONTROLLABLE BREAKER TYPE														
CODE: L=LIGHTING, R=RECEPTACLE, M=MOTOR, E=EQUIPMENT										CODE: L=LIGHTING, R=RECEPTACLE, M=MOTOR, E=EQUIPMENT										CODE: L=LIGHTING, R=RECEPTACLE, M=MOTOR, K=KITCHEN										CODE: L=LIGHTING, R=RECEPTACLE, M=MOTOR, D=DOORM														
SURFACE MOUNTING TRIM										SURFACE MOUNTING TRIM										SURFACE MOUNTING TRIM										SURFACE MOUNTING TRIM														
NEMA 1										NEMA 1										NEMA 1										NEMA 1														
COPPER GROUND BAR										COPPER GROUND BAR										COPPER GROUND BAR										COPPER GROUND BAR														
LOAD	BOC	POE	BKR	QTY	A	B	C	QTY	CODE	LOAD	BOC	POE	BKR	QTY	A	B	C	QTY	CODE	LOAD	BOC	POE	BKR	QTY	A	B	C	QTY	CODE	LOAD	BOC	POE	BKR	QTY	A	B	C	QTY	CODE					
EXHAUST FAN JOHNSON ST.	M	3	20	1	1,321					GENSET BLOCK HEATER	L	1	20	1	907						RECEPTACLES	R	1	20	1	1,260						LEVEL L-A SUMP PUMPS	M	3	20	1								
	M	-	-	3	1,200					GENSET BATT CHARGER	L	1	20	3	1,292						RECEPTACLES	R	1	20	3	1,260																		
	M	-	-	5	1,321					GENSET BATT HEATER	L	1	20	5	1,600						RECEPTACLES	R	1	20	5	1,260																		
EXHAUST FAN DAYTON ST.	M	3	20	7	1,321					SPARE	L	1	20	7	819						RECEPTACLES	R	1	20	7	1,260						LEVEL L-A SUMP ROOM HEAT TRACE (GFCl)	M	3	20	7								
	M	-	-	9	1,321					SPARE	L	1	20	9	702						RECEPTACLES	R	1	20	9	1,260																		
	M	-	-	11	1,321					SPARE	L	1	20	11	702						SPARE	M	1	20	11							L-A SUMP ROOM	M	1	20	11								
SPARE	R	1	20	13						SPARE	R	1	20	13							BOOTH #1	M	2	20	13							L-F SWEEPER ROOM	M	2	20	13								
SPARE	R	1	20	15						SPARE	L	1	20	15	1,200						--	M	-	-	15						SPARE	M	-	-	15									
SPARE	R	1	20	17						SPARE	L	1	20	17	1,200						BOOTH #2	M	2	20	17							SPARE	M	-	-	19								
SPARE	R	1	20	19						SPARE	L	1	20	19	1,200						--	M	-	-	19						SPARE	M	-	-	19									
SPARE	R	1	20	21						SPARE	L	1	20	21	600						BOOTH #3	M	2	20	21							SPARE	M	-	-	23								
SPARE	R	1	20	23						SPARE	L	1	20	23							--	M	-	-	23						SPARE	M	-	-	23									
SPARE	R	1	20	25						SPARE	L	1	20	25							BOOTH #4	M	2	20	25							SPARE	M	-	-	27								
SPARE	R	1	20	27						SPARE	L	1	20	27							--	M	-	-	27						SPARE	M	-	-	27									
SPARE	R	1	20	29						SPARE	L	1	20	29							SPARE	L	1	20	29						SPARE	M	-	-	29									
										PROVISION				31							SPARE	L	1	20	31						SPARE	M	-	-	31									
										PROVISION				33							SPARE	L	1	20	33						SPARE	M	-	-	33									
										PROVISION				35							SPARE	L	1	20	35						SPARE	M	-	-	35									
										PROVISION				36							SPARE	L	1	20	36						SPARE	M	-	-	36									
										PROVISION				37							SPARE	L	1	20	37						SPARE	M	-	-	37									
										PROVISION				38	60	3	M				SPARE	L	1	20	38						SPARE	M	-	-	38									
										PROVISION				39							SPARE	L	1	20	39						SPARE	M	-	-	39									
										PROVISION				41							SPARE	L	1	20	41						SPARE	M	-	-	41									
3.842	PHASE A	RECEPT-VA @		per NEC						9.382	PHASE A	RECEPT-VA @		per NEC						2.520	PHASE A	RECEPT-VA @		per NEC		6.300	TCL VA		6.300															
3.842	PHASE B	LIGHTS-VA @	100%		11,526					8.930	PHASE B	LIGHTS-VA @	125%	14,588	DEMAND VA					2.520	PHASE B	LIGHTS-VA @	100%		DEMAND VA		6.300	DEMAND VA		6.300														
3.842	PHASE C	MOTOR-VA @	100%		11,526					9.320	PHASE C	MOTOR-VA @	100%	11,526	HI-PH CONN. A					1.260	PHASE C	MOTOR-VA @	95%		HI-PH CONN. A		21			21														
11,526	TCL	EQUIP-VA @	100%							27.512	TCL	EQUIP-VA @	100%		DEMAND A					6.300	TCL	KITCHEN-VA @	100%		DEMAND A		18			18														

BRANCH PANEL NAME										BRANCH PANEL NAME										BRANCH PANEL NAME										BRANCH PANEL NAME												
L2										L1										L1										L1												
120/ 208										120/ 208										120/ 208										120/ 208												
3										3										3										3												
4										4										4										4												
100 A										100 A										100 A										100 A												
MLO										MLO										MLO										MLO												
22,000										22,000										22,000										22,000												
CONTROLLABLE BREAKER TYPE										CONTROLLABLE BREAKER TYPE										CONTROLLABLE BREAKER TYPE										CONTROLLABLE BREAKER TYPE												
CODE: L=LIGHTING, R=RECEPTACLE, M=MOTOR, E=EQUIPMENT										CODE: L=LIGHTING, R=RECEPTACLE, M=MOTOR, E=EQUIPMENT										CODE: L=LIGHTING, R=RECEPTACLE, M=MOTOR, E=EQUIPMENT										CODE: L=LIGHTING, R=RECEPTACLE, M=MOTOR, E=EQUIPMENT												
SURFACE MOUNTING TRIM										SURFACE MOUNTING TRIM										SURFACE MOUNTING TRIM										SURFACE MOUNTING TRIM												
NEMA 1										NEMA 1										NEMA 1										NEMA 1												
COPPER GROUND BAR										COPPER GROUND BAR										COPPER GROUND BAR										COPPER GROUND BAR												
LOAD	BOC	POE	BKR	QTY	A	B	C	QTY	CODE	LOAD	BOC	POE	BKR	QTY	A	B	C	QTY	CODE	LOAD	BOC	POE	BKR	QTY	A	B	C	QTY	CODE	LOAD	BOC	POE	BKR	QTY	A	B	C	QTY	CODE			
LEVEL 3 LIGHTING	L	1	20	1	251					LEVEL 3 LIGHTING	L	1	20	1	907						LEVEL L LIGHTING	L	1	20	1	902						LEVEL L LIGHTING	L	1	20	1						
	L	1	20	3	1,066					LEVEL 3 LIGHTING	L	1	20	3	902						LEVEL L LIGHTING	L	1	20	3	902						LEVEL 1 LIGHTING	L	1	20	3						
	L	1	20	5	656					LEVEL 3 LIGHTING	L	1	20	5	199						LEVEL 1 LIGHTING	L	1	20	5	199						LEVEL 1 LIGHTING	L	1	20	5						
	L	1	20	7	1,066					LEVEL 3 LIGHTING	L	1	20	7	820						LEVEL 1 LIGHTING	L	1	20	7	820						LEVEL 1 LIGHTING	L	1	20	7						
	L	1	20	9	656					LEVEL 3 LIGHTING	L	1	20	9	169						LEVEL 1 LIGHTING	L	1	20	9	169						LEVEL 1 LIGHTING	L	1	20	9						
	L	1	20	11	246					LEVEL 4 LIGHTING	L	1	20	11	246						LEVEL 1 LIGHTING	L	1	20	11	246						LEVEL 1 LIGHTING	L	1	20	11						
	L	1	20	13	1,066					LEVEL 4 LIGHTING	L	1	20	13	92						LEVEL 2 LIGHTING	L	1	20	13	92						LEVEL 1 LIGHTING	L	1	20	13						
	L	1	20	15	656					LEVEL 4 LIGHTING	L	1	20	15	164						LEVEL 2 LIGHTING	L	1	20	15	164						LEVEL 2 LIGHTING	L	1	20	15						
	L	1	20	17	251					LEVEL 4 LIGHTING	L	1	20	17	984						LEVEL 2 LIGHTING	L	1	20	17	984						LEVEL 2 LIGHTING	L	1	20	17						
	L	1	20	19	328					LEVEL 4 LIGHTING	L	1	20	19	328						LEVEL 2 LIGHTING	L	1	20	19	328						LEVEL 2 LIGHTING	L									

