



# City of Madison Water Utility Storm Water Management Improvements

Madison, Wisconsin  
Contract No. 7936, Project No. 10442

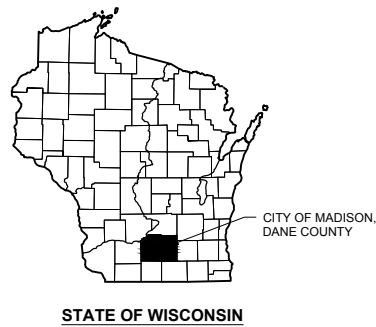
**Mead & Hunt**  
Mead & Hunt, Inc.  
2440 Deming Way  
Middleton, WI 53562  
phone: 608-273-6380  
meadhunt.com

© Copyright 2015  
This document, or any portion thereof, shall not be duplicated, disclosed, or used on any other project or extension of this project except by written agreement with Mead & Hunt, Inc. Mead & Hunt shall not be responsible for any unauthorized use of, or alteration to these documents.

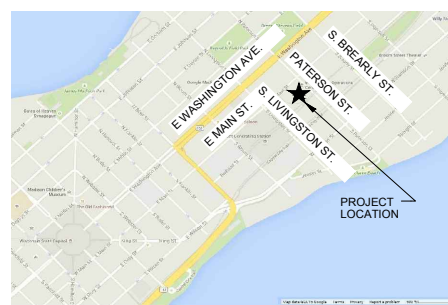


City of Madison Water Utility  
Storm Water Management Improvements  
Contract No. 7936, Project No. 10442  
Madison, Wisconsin

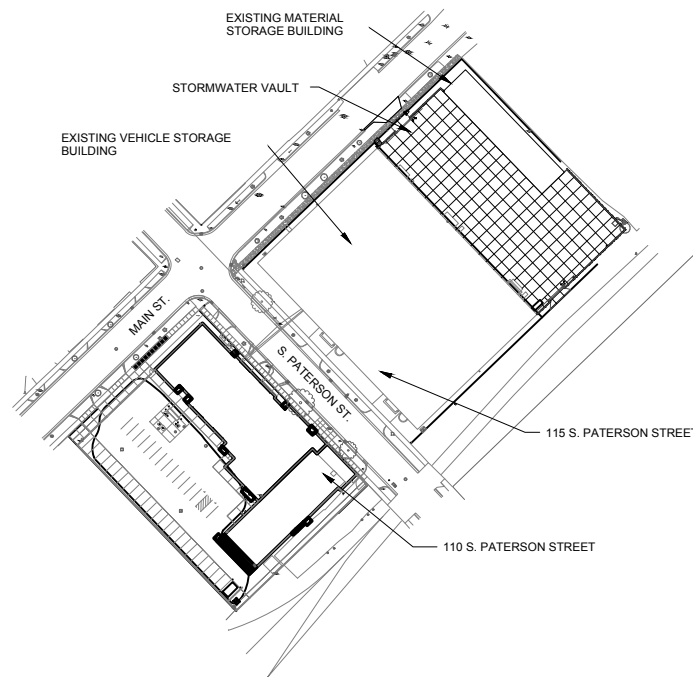
STATE MAP:



VICINITY MAP:



SITE MAP



SHEET INDEX

Sheet Number	Sheet Title
G-001	COVER SHEET
C-141	SITE UTILITY PLAN
C-501	DETAILS

ISSUED

MSB NO.: 3235300-131021.02  
DATE: March 24, 2017  
DESIGNED BY: ACA  
DRAWN BY: ACA  
CHECKED BY: RCL

DO NOT SCALE DRAWINGS

SHEET CONTENTS  
COVER SHEET

SHEET NO.:

G-001

These documents shall not be used for any purpose or project for which it is not intended. Mead & Hunt shall be indemnified by the client and held harmless from all claims, damages, liabilities, losses, and expenses, including attorneys' fees and costs, arising out of such misuse or reuse of the documents. In addition, unauthorized reproduction of these documents, in part or as a whole, is prohibited.



**City of Madison Water Utility**  
Storm Water Management Improvements

Contract No. 7936, Project No. 10442  
Madison, Wisconsin

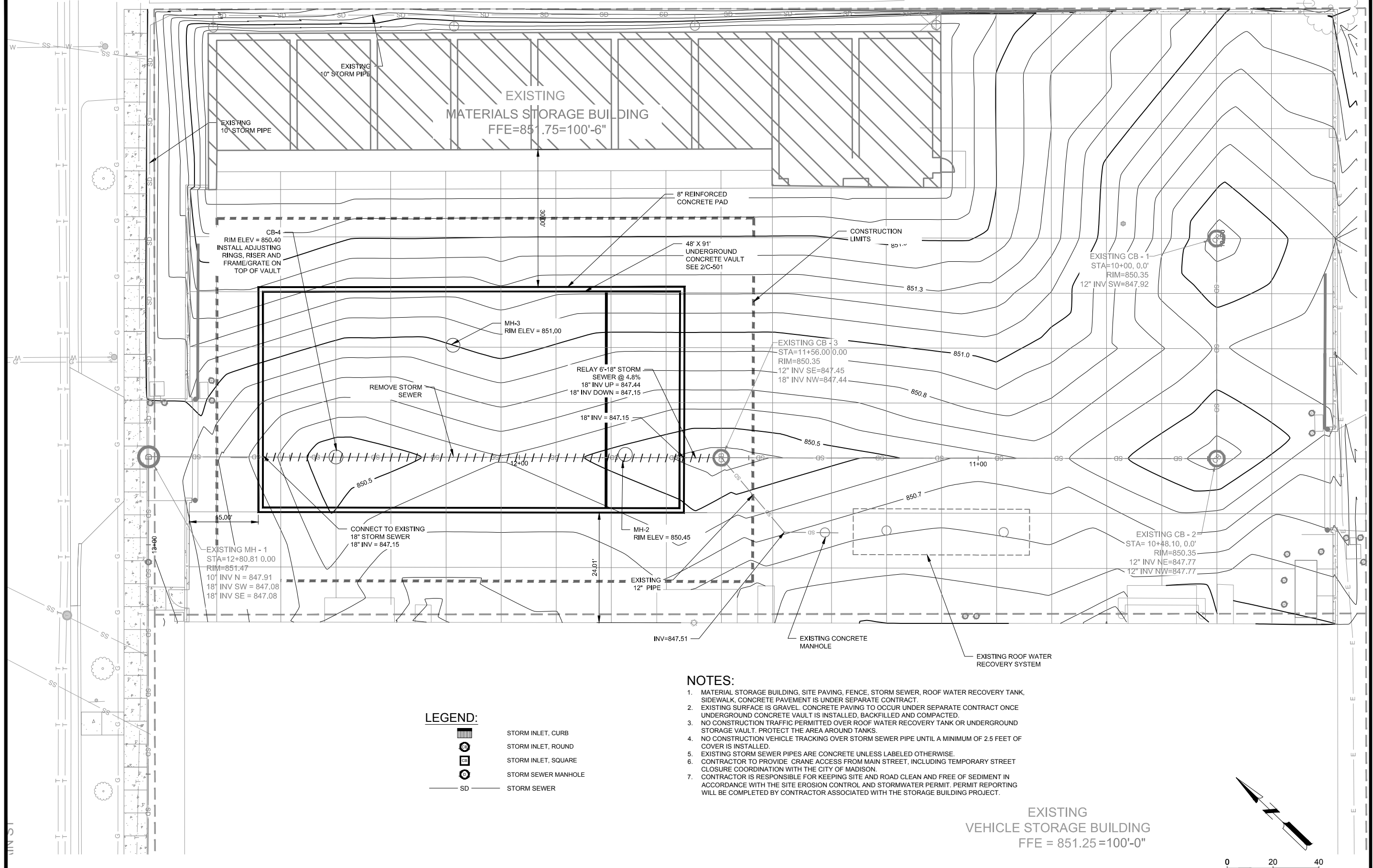
ISSUED

M&H NO: 3235300-131021.09  
DATE: March 24, 2017  
DESIGNED BY: ACA  
DRAWN BY: ACA  
CHECKED BY: RL

DO NOT SCALE DRAWINGS  
SHEET CONTENTS  
SITE UTILITY PLAN

SHEET NO.

**C-141**



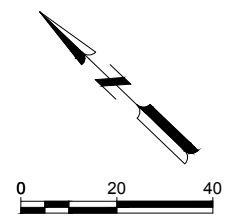
**NOTES:**

1. MATERIAL STORAGE BUILDING, SITE PAVING, FENCE, STORM SEWER, ROOF WATER RECOVERY TANK, SIDEWALK, CONCRETE PAVEMENT IS UNDER SEPARATE CONTRACT.
2. EXISTING SURFACE IS GRAVEL. CONCRETE PAVING TO OCCUR UNDER SEPARATE CONTRACT ONCE UNDERGROUND CONCRETE VAULT IS INSTALLED, BACKFILLED AND COMPACTED.
3. NO CONSTRUCTION TRAFFIC PERMITTED OVER ROOF WATER RECOVERY TANK OR UNDERGROUND STORAGE VAULT. PROTECT THE AREA AROUND TANKS.
4. NO CONSTRUCTION VEHICLE TRACKING OVER STORM SEWER PIPE UNTIL A MINIMUM OF 2.5 FEET OF COVER IS INSTALLED.
5. EXISTING STORM SEWER PIPES ARE CONCRETE UNLESS LABELED OTHERWISE.
6. CONTRACTOR TO PROVIDE CRANE ACCESS FROM MAIN STREET, INCLUDING TEMPORARY STREET CLOSURE COORDINATION WITH THE CITY OF MADISON.
7. CONTRACTOR IS RESPONSIBLE FOR KEEPING SITE AND ROAD CLEAN AND FREE OF SEDIMENT IN ACCORDANCE WITH THE SITE EROSION CONTROL AND STORMWATER PERMIT. PERMIT REPORTING WILL BE COMPLETED BY CONTRACTOR ASSOCIATED WITH THE STORAGE BUILDING PROJECT.

**LEGEND:**

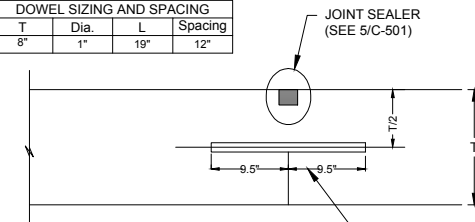
- STORM INLET, CURB
- STORM INLET, ROUND
- STORM INLET, SQUARE
- STORM SEWER MANHOLE
- STORM SEWER

EXISTING  
VEHICLE STORAGE BUILDING  
FFE = 851.25 = 100'-0"



X:\3235300\131021.02\TECH\CAD\STORMWATER\PLANS\C-141 SITE UTILITY PLAN.DWG 3/22/2017 11:50:12 AM

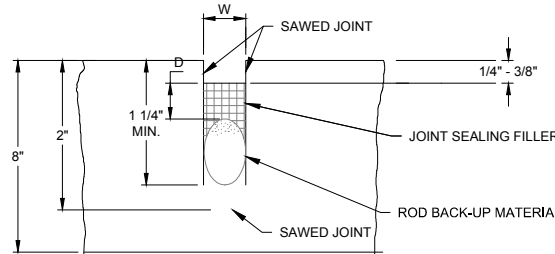
DOWEL SIZING AND SPACING			
T	Dia.	L	Spacing
8"	1"	19"	12"



EPOXY-COATED & OILED SMOOTH STEEL DOWELS, LENGTH, SIZE AND SPACING SPECIFIED IN TABLE, DOWEL BOTH WAYS. (NOTE: PAINTED AND OILED CAN SUBSTITUTE FOR EPOXY COATED AND OILED.)

NOTE:  
T=THICKNESS OF CONCRETE PAVEMENT.

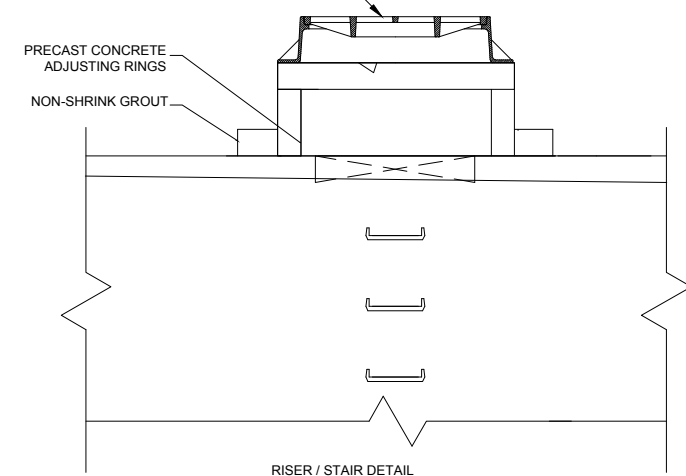
**6 TYPICAL CONTRACTION JOINT DETAIL**  
NOT TO SCALE



- NOTES:
1. SEALANT RESERVOIR SIZED TO PROVIDE PROPOSED SHAPE FACTOR W/D AS RECOMMENDED BY THE SEALANT MANUFACTURER FOR OPTIMUM PERFORMANCE.
  2. ROD BACKUP MATERIAL SHALL BE COMPATIBLE WITH THE TYPE OF SEALANT USED AND SIZED TO PROVIDE THE ADEQUATE SHAPE FACTOR.

**5 TYPICAL CONTRACTION JOINT MATERIAL DETAIL**  
NOT TO SCALE

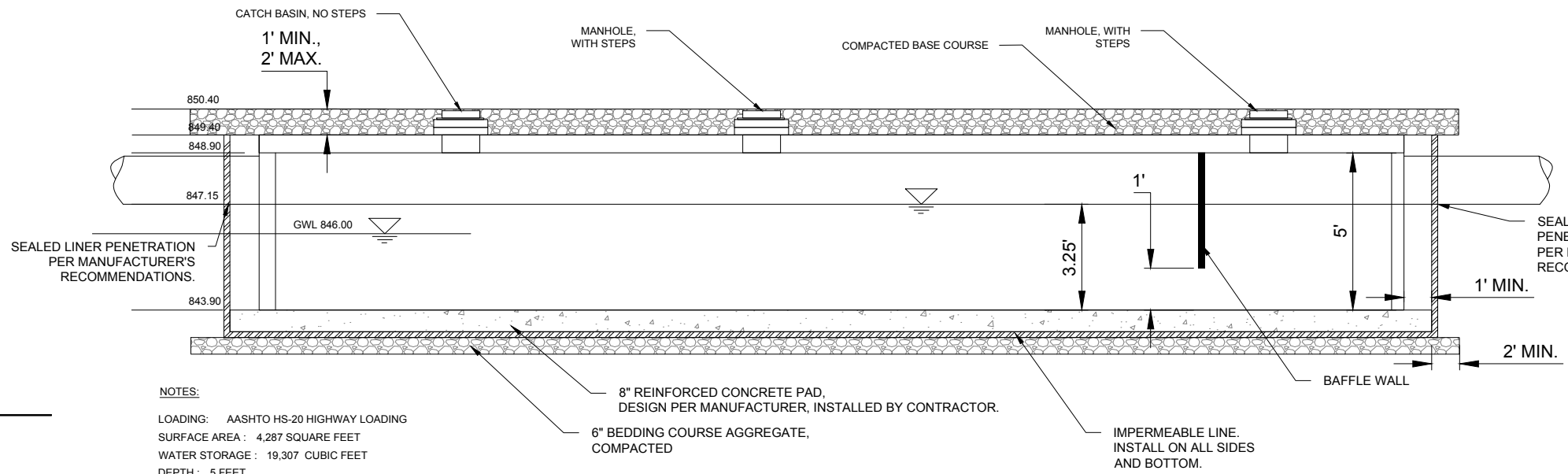
MANHOLE CASTING NF R-1524 OR R-1550 WITH TYPE B NON ROCKING LID. NF 1653A CAN BE SUBSTITUTED FOR A FLATTOP STRUCTURE. FOR CATCH BASIN, REUSE EXISTING CASTING.



- ASTM C-478-95a
- ASTM D-4101-95b
- AASHTO M-199
- ASTM A-615

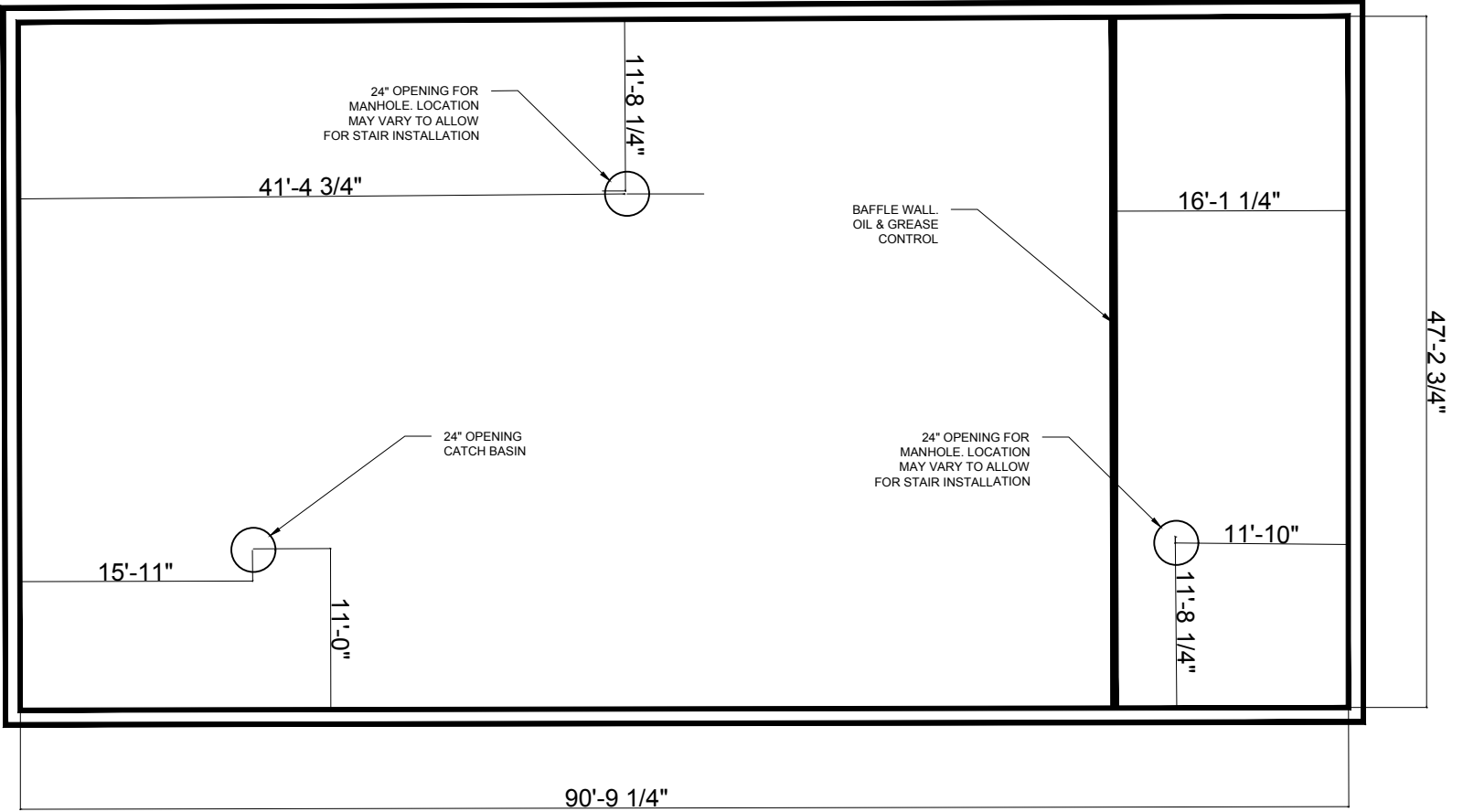
**4 STAIR DETAIL**  
NOT TO SCALE

**3 RISER/STAIR DETAIL**  
NOT TO SCALE



- NOTES:
- LOADING: AASHTO HS-20 HIGHWAY LOADING  
SURFACE AREA: 4,287 SQUARE FEET  
WATER STORAGE: 19,307 CUBIC FEET  
DEPTH: 5 FEET
- REINFORCED CONCRETE SLAB DESIGN SHALL BE BY TANK SUPPLIER. IT SHALL BE DESIGNED WITH THE FOLLOWING MINIMUMS:
- 8" THICK, 4,000 PSI CONCRETE
  - CONTROL JOINTS SPACED AT 16' X16' OR LESS, SEE 5&6/C-501.
  - REINFORCING #4 BARS AT 16" O.C. BOTH WAYS.

**2 STORMWATER VAULT PROFILE**  
NOT TO SCALE



**1 STORMWATER VAULT LAYOUT DETAIL**  
NOT TO SCALE