

Madison, Wisconsin

CITY OF MADISON

CITY ENGINEERING DIVISION

DEPARTMENT OF PUBLIC WORKS

PLAN OF PROPOSED IMPROVEMENT

PACKERS AVENUE RESURFACING ASSESSMENT DISTRICT - 2020

CITY PROJECT NO. 12564
CONTRACT NO. 8502

PUBLIC IMPROVEMENT PROJECT
APPROVED

APPROVED DATE: FEBRUARY 25, 2020

BY THE COMMON COUNCIL
OF MADISON, WISCONSIN

PUBLIC IMPROVEMENT DESIGN
APPROVED BY:

[Signature] 3/5/20
City Engineer Date

STREET
DESIGNED BY:



WATER MAIN
DESIGNED BY:

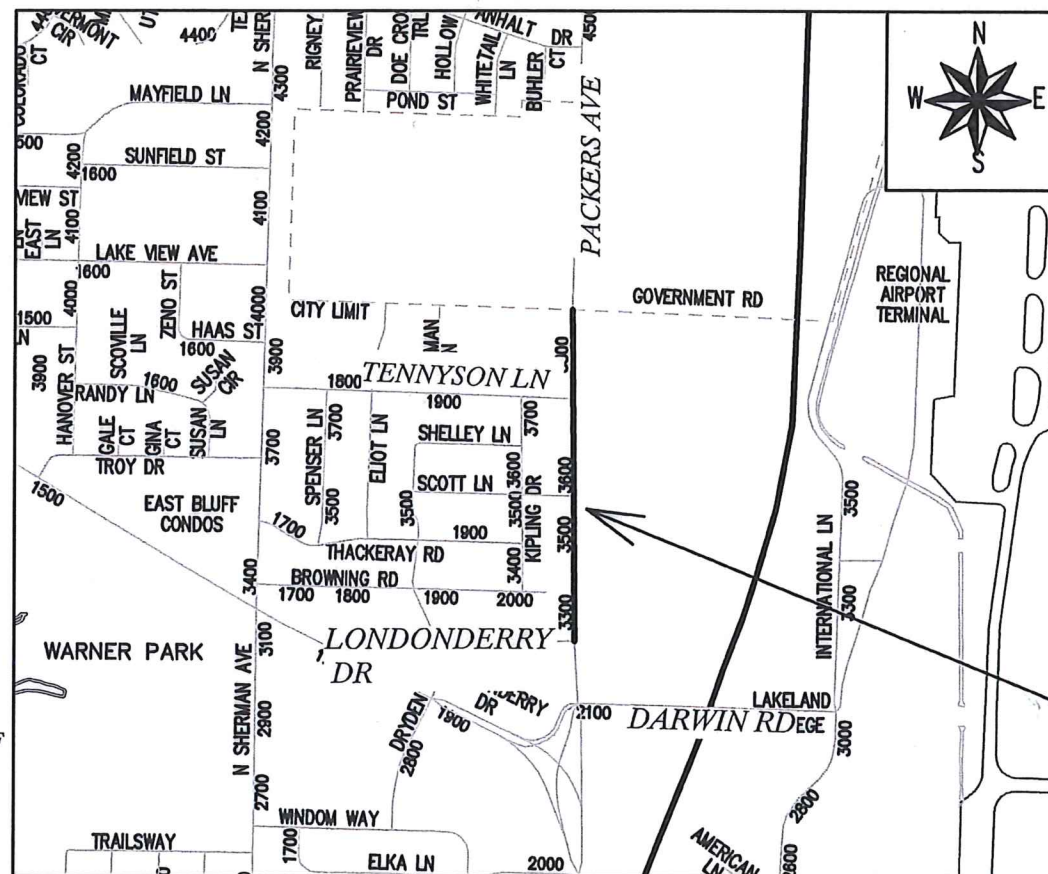


INDEX OF SHEETS

SHEET NO.	DETAILS
D1	DETAILS
P1-P5	PLAN & PROFILES
M1-M4	PAVEMENT MARKING
W1-W5	WATER PLAN & PROFILES
W6-W10	WATER IMPACT PLAN
W11	WATER ESTIMATE OF MATERIALS

CONVENTIONAL SIGNS
FIELD VERIFY ALL UTILITY LOCATIONS

GAS	— G —
STORM SEWER	— ST —
SANITARY SEWER	— SAN —
WATER	— W —
BURIED ELECTRIC	— E —
OVERHEAD ELECTRIC	— OH —
POWER POLE	
ADA COMPLIANT RAMP W/ DETECTABLE WARNING FIELD	
COMBUSTIBLE FLUIDS	



PROJECT
LOCATION

NOTES:

ALL GUTTERS SHALL DRAIN WITH A MINIMUM GRADE OF
0.50% TOWARD STORM SEWER INLETS.

EARTH WORK SUMMARY:

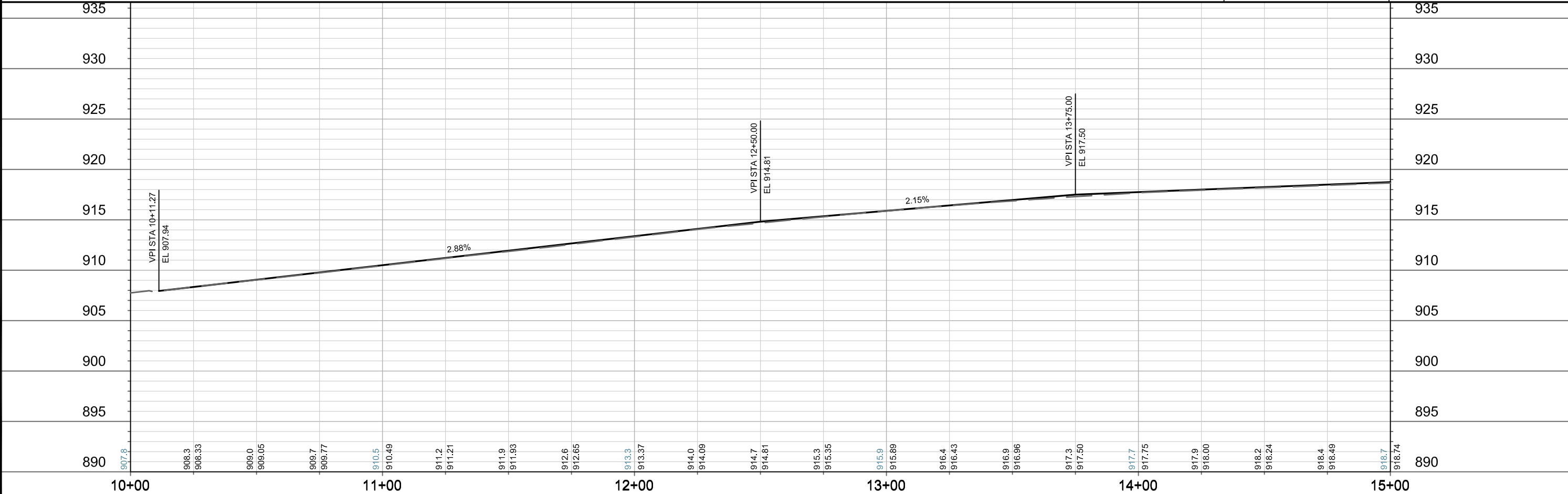
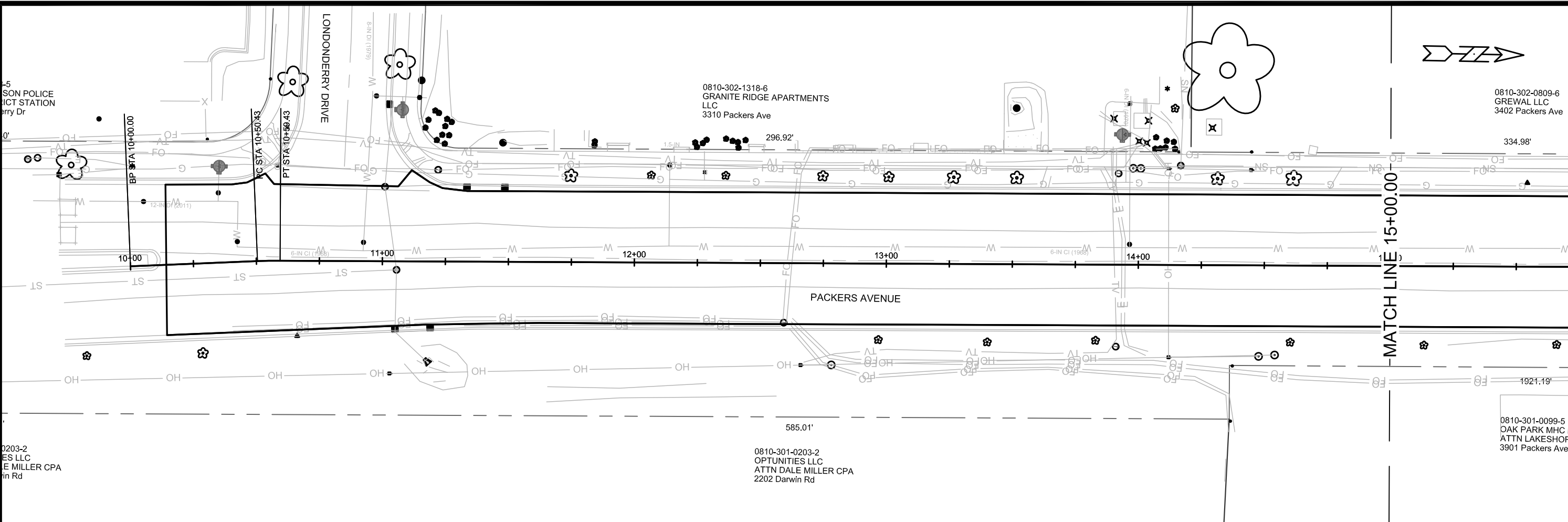
ESTIMATED UNDISTRIBUTED UNDERCUT = 440.00 C.Y.
TOTAL UNCLASSIFIED EXCAVATION CUT = 440.00 C.Y.

PLOT SCALE: 1" = 1'

PLOT NAME: —

REV. DATE: 3/2/2020 8:59 AM

ORIGINATOR: CITY_OF_MADISON



REVISION	DATE	BY

12564
MADISON, WI
CONTRACT NO: 8502

PLAN & PROFILE
PACKERS AVENUE RESURFACING ASSESSMENT DISTRICT - 2020
M:\DESIGN\Projects\12564\CAD\Streets\Packers PnP.dwg

12564
P-1

MATCH LINE 15+00.00

MATCH LINE 20+00.00

0810-302-0809-6
GREWAL LLC
3402 Packers Ave

0810-302-0810-3
GREWAL LLC
3502 Packers Ave

0810-302-0801-2
GREWAL LLC
3520 Packers Ave

334.98'

150.00'

155.8'

20' BUS PAD

PACKERS AVENUE

0810-301-0099-5
OAK PARK MHC LLC
ATTN LAKESHORE MNGMT
3901 Packers Ave

0810-301-0099-5
OAK PARK MHC LLC
ATTN LAKESHORE MNGMT
3901 Packers Ave

945

940

935

930

925

920

915

910

905

900

945

940

935

930

925

920

915

910

905

900

15+00

16+00

17+00

18+00

19+00

20+00

VPI STA 16+50.00
EL 920.23

0.99%

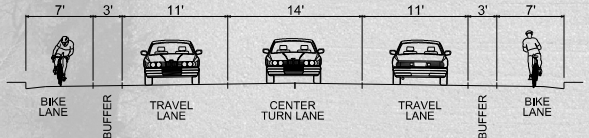
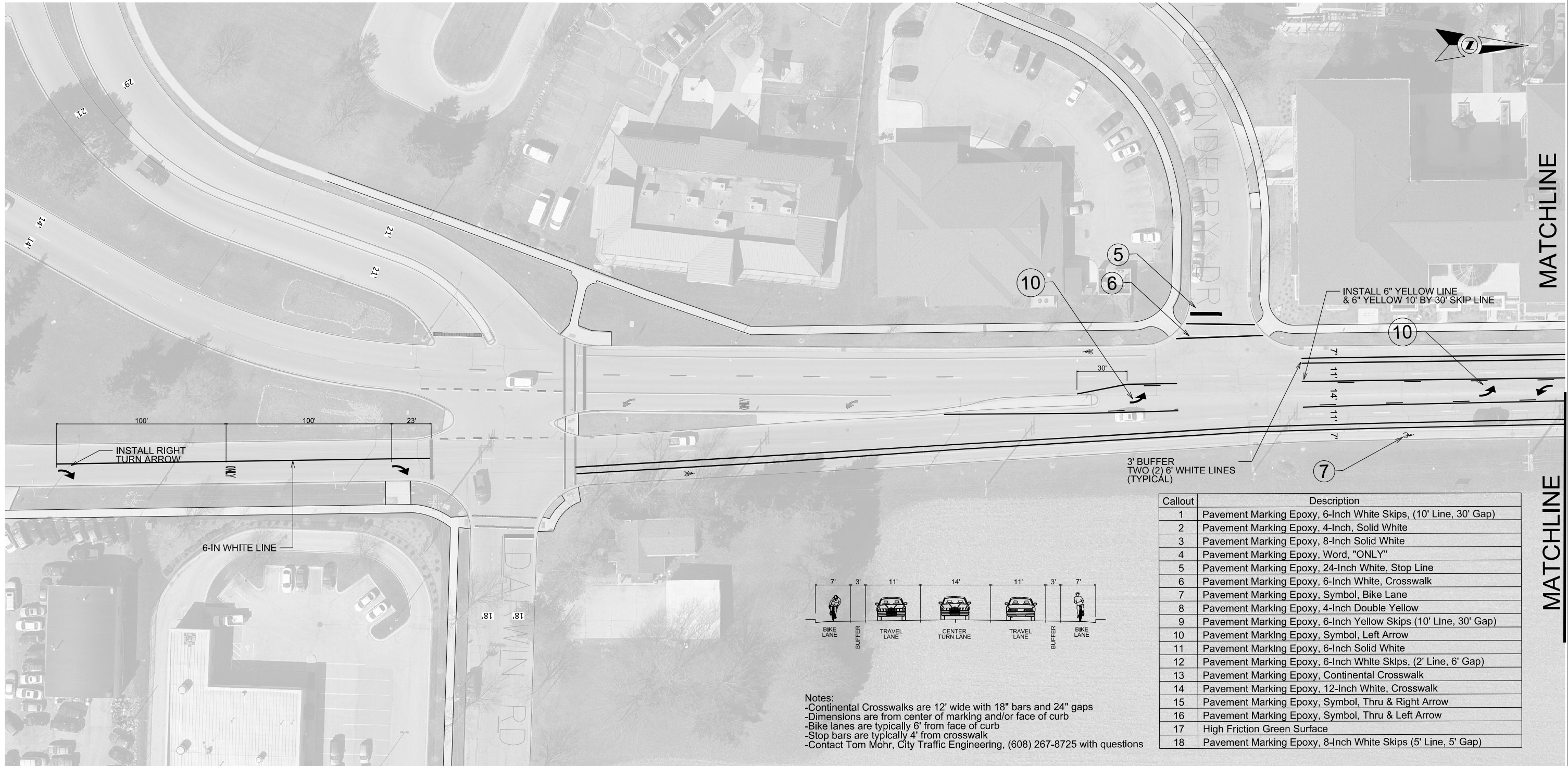
1.28%

REVISION	DATE	BY
MARK	12564	
DESIGNED BY: SMS	DATE: 3/3/2020 8:52 AM	SCALE: 1" = 40'
12564		P-2

12564
MADISON, WI
PACKERS AVENUE RESURFACING ASSESSMENT DISTRICT - 2020
CONTRACT NO: 8502



12564
P-2



Notes:
 -Continental Crosswalks are 12' wide with 18" bars and 24" gaps
 -Dimensions are from center of marking and/or face of curb
 -Bike lanes are typically 6' from face of curb
 -Stop bars are typically 4' from crosswalk
 -Contact Tom Mohr, City Traffic Engineering, (608) 267-8725 with questions

Callout	Description
1	Pavement Marking Epoxy, 6-Inch White Skips, (10' Line, 30' Gap)
2	Pavement Marking Epoxy, 4-Inch, Solid White
3	Pavement Marking Epoxy, 8-Inch Solid White
4	Pavement Marking Epoxy, Word, "ONLY"
5	Pavement Marking Epoxy, 24-Inch White, Stop Line
6	Pavement Marking Epoxy, 6-Inch White, Crosswalk
7	Pavement Marking Epoxy, Symbol, Bike Lane
8	Pavement Marking Epoxy, 4-Inch Double Yellow
9	Pavement Marking Epoxy, 6-Inch Yellow Skips (10' Line, 30' Gap)
10	Pavement Marking Epoxy, Symbol, Left Arrow
11	Pavement Marking Epoxy, 6-Inch Solid White
12	Pavement Marking Epoxy, 6-Inch White Skips, (2' Line, 6' Gap)
13	Pavement Marking Epoxy, Continental Crosswalk
14	Pavement Marking Epoxy, 12-Inch White, Crosswalk
15	Pavement Marking Epoxy, Symbol, Thru & Right Arrow
16	Pavement Marking Epoxy, Symbol, Thru & Left Arrow
17	High Friction Green Surface
18	Pavement Marking Epoxy, 8-Inch White Skips (5' Line, 5' Gap)

PLOT SCALE:
 PLOT NAME:
 REV. DATE:
 ORIGINATOR: CITY OF MADISON, TRAFFIC ENG. DIV.

MATCHLINE
 MATCHLINE

PAVEMENT MARKING PLAN

PACKERS AVENUE

CITY OF MADISON

JLS 2/28/2020



PLOT SCALE:

PLOT NAME:

REV. DATE:

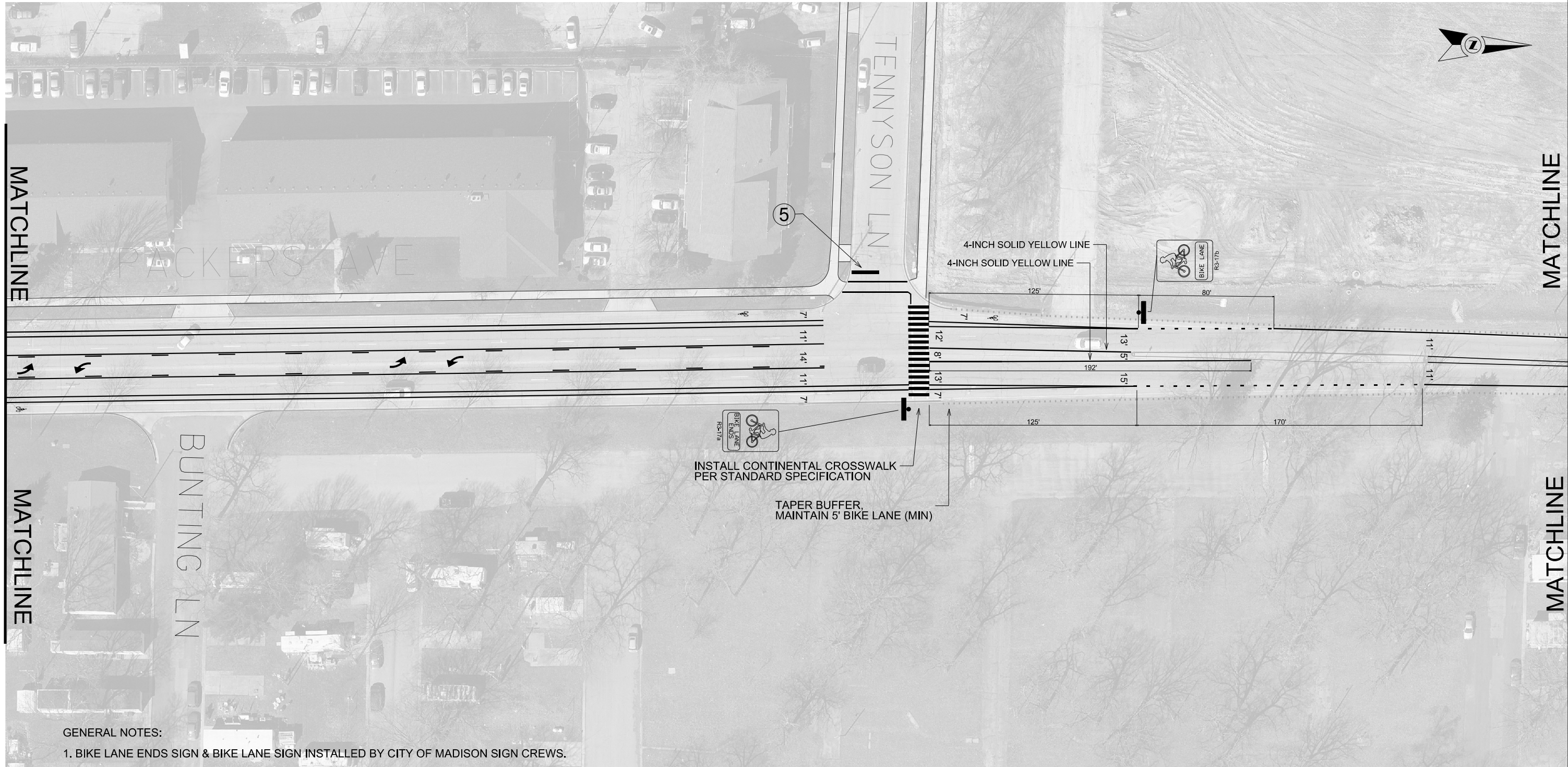
ORIGINATOR: CITY OF MADISON, TRAFFIC ENG. DIV.

PAVEMENT MARKING PLAN

PACKERS AVENUE

CITY OF MADISON

JLS 3/2/2020



GENERAL NOTES:

- 1. BIKE LANE ENDS SIGN & BIKE LANE SIGN INSTALLED BY CITY OF MADISON SIGN CREWS.

PLOT SCALE:

PLOT NAME:

REV. DATE:

ORIGINATOR: CITY OF MADISON, TRAFFIC ENG. DIV.

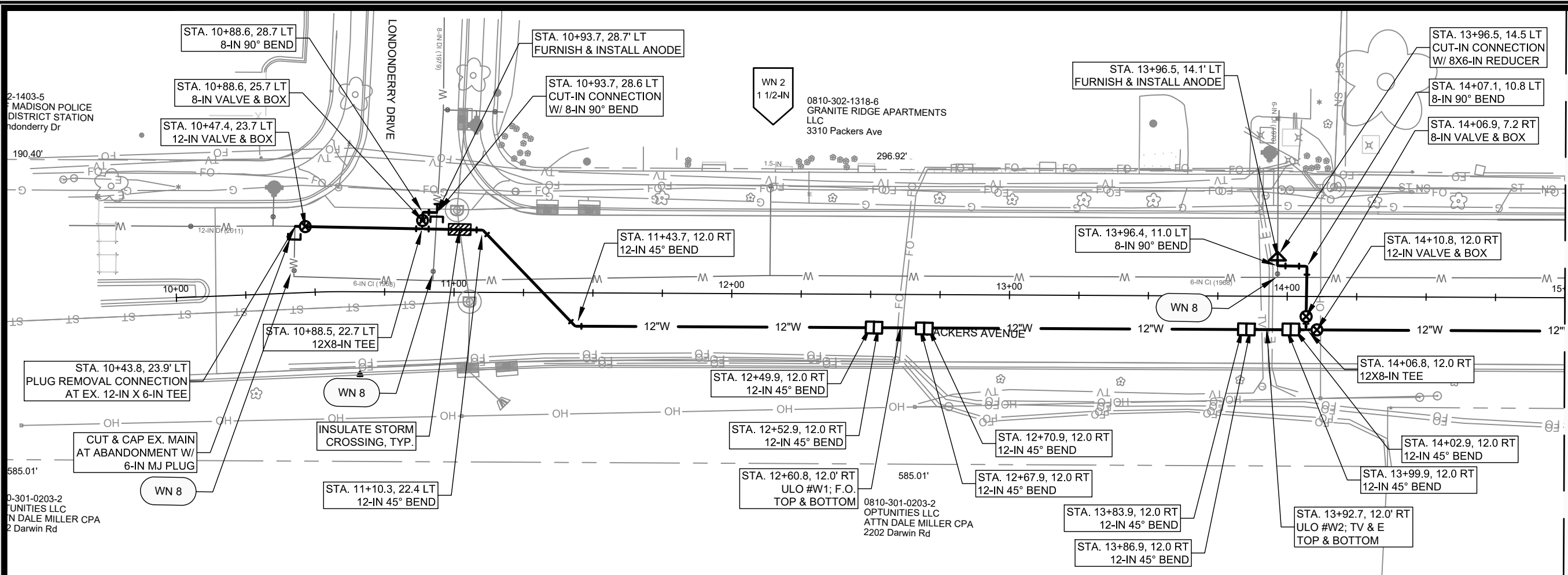


PLOT SCALE:

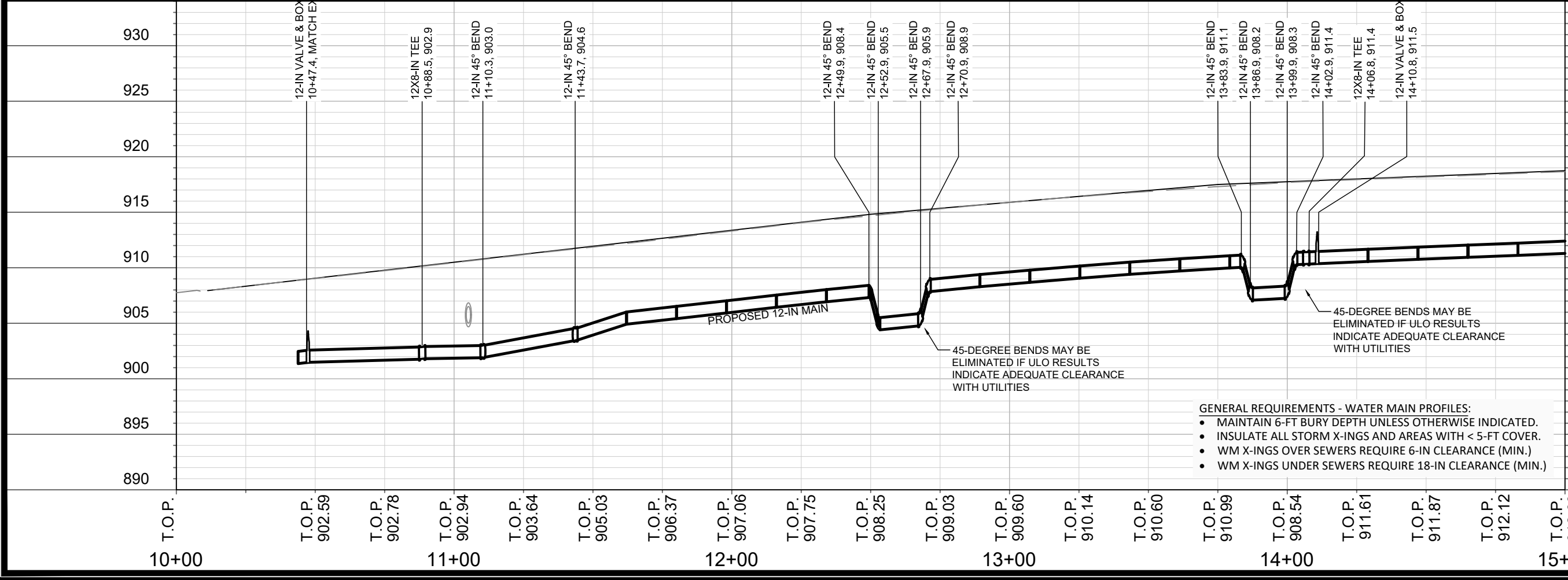
PLOT NAME:

REV. DATE:

ORIGINATOR: CITY OF MADISON, TRAFFIC ENG. DIV.



MATCH LINE STA. 15+00



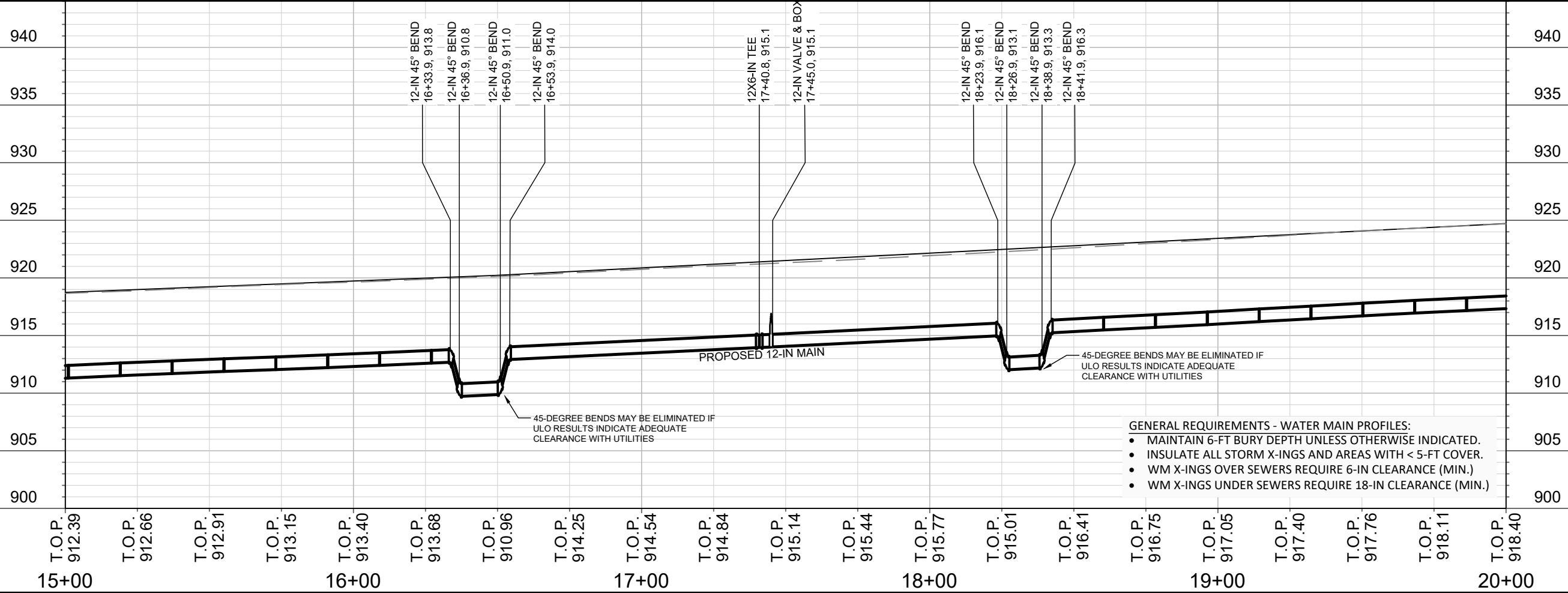
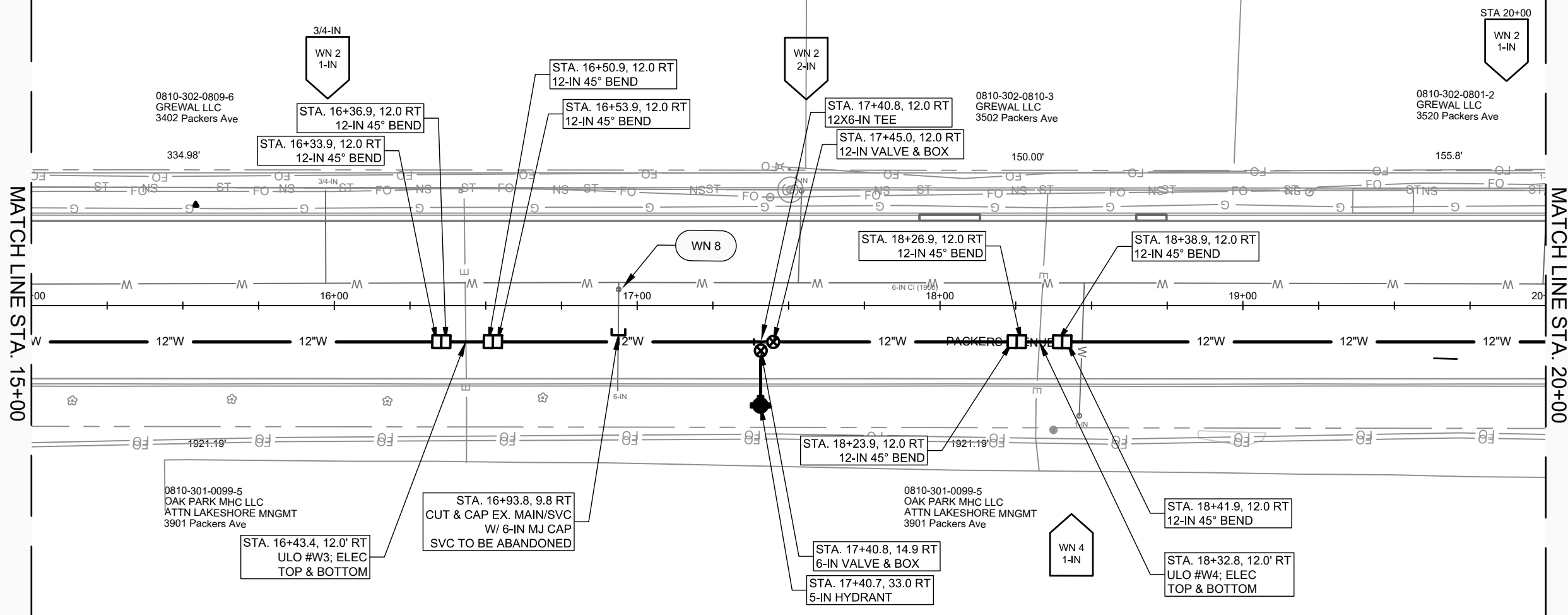
- GENERAL REQUIREMENTS - WATER MAIN PROFILES:**
- MAINTAIN 6-FT BURY DEPTH UNLESS OTHERWISE INDICATED.
 - INSULATE ALL STORM X-INGS AND AREAS WITH < 5-FT COVER.
 - WM X-INGS OVER SEWERS REQUIRE 6-IN CLEARANCE (MIN.)
 - WM X-INGS UNDER SEWERS REQUIRE 18-IN CLEARANCE (MIN.)

SCALE: 1" = 40'
 DESIGNED BY: KBM
 MADISON WATER UTILITY
 119 E OLIN AVE, MADISON, WI 53713
 PRINTING DATE: 3/2/20

PACKERS AVENUE RESURFACING ASSESSMENT DISTRICT - 2020
 WATER PLAN & PROFILE: PACKERS AVE WATER
CITY OF MADISON, WISCONSIN
 CONTRACT NO: 8502



12564
 W-1



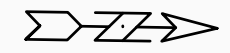
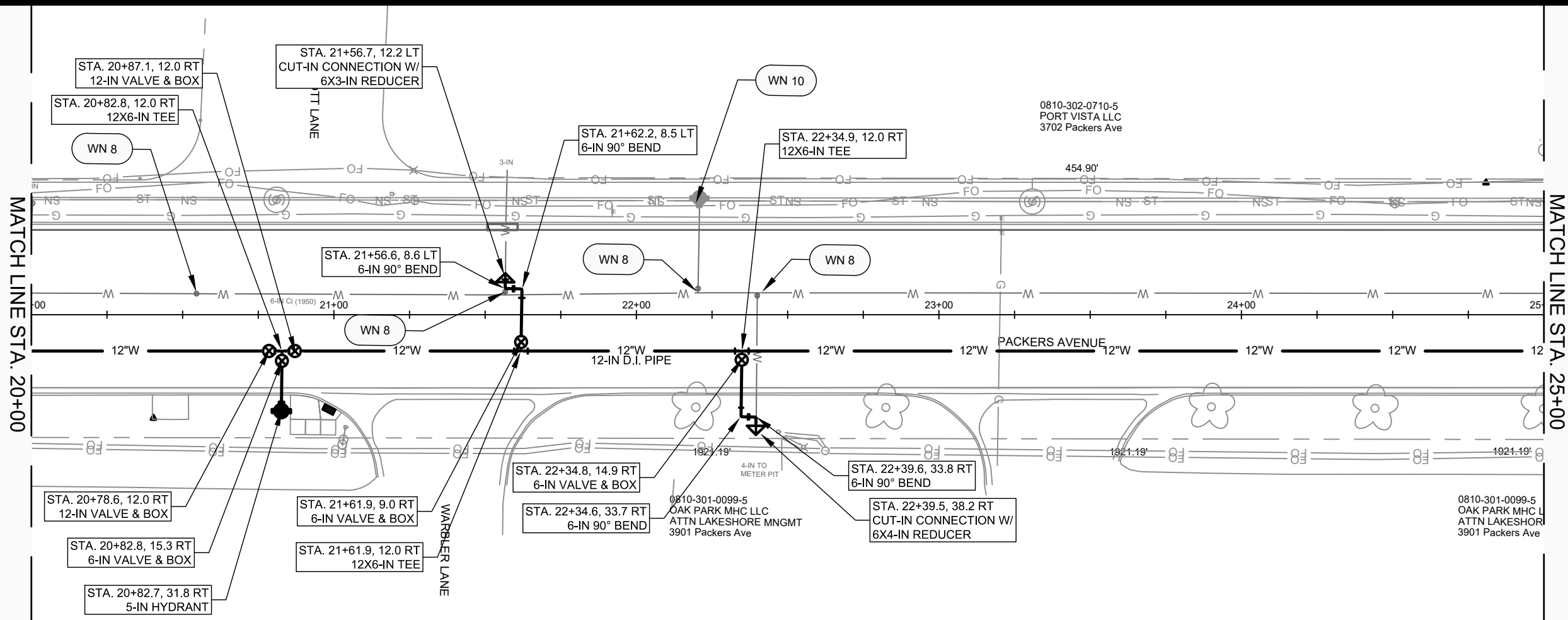
- GENERAL REQUIREMENTS - WATER MAIN PROFILES:**
- MAINTAIN 6-FT BURY DEPTH UNLESS OTHERWISE INDICATED.
 - INSULATE ALL STORM X-INGS AND AREAS WITH < 5-FT COVER.
 - WM X-INGS OVER SEWERS REQUIRE 6-IN CLEARANCE (MIN.)
 - WM X-INGS UNDER SEWERS REQUIRE 18-IN CLEARANCE (MIN.)

SCALE: 1" = 40'
 DESIGNED BY: KBM
 MADISON WATER UTILITY
 119 E OLIN AVE, MADISON, WI 53713
 PRINTING DATE: 3/2/20

PACKERS AVENUE RESURFACING ASSESSMENT DISTRICT - 2020
 WATER PLAN & PROFILE: PACKERS AVE WATER
CITY OF MADISON, WISCONSIN
 CONTRACT NO: 8502

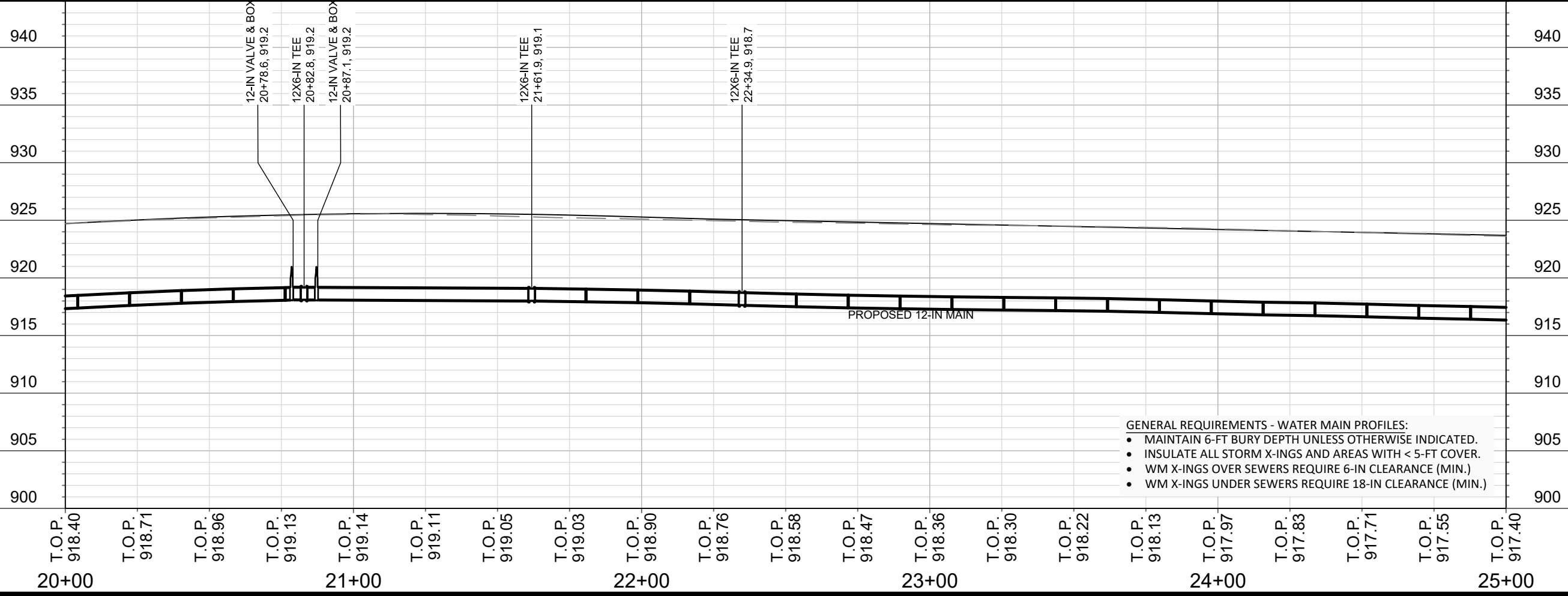


12564
 W-2



MATCH LINE STA. 20+00

MATCH LINE STA. 25+00



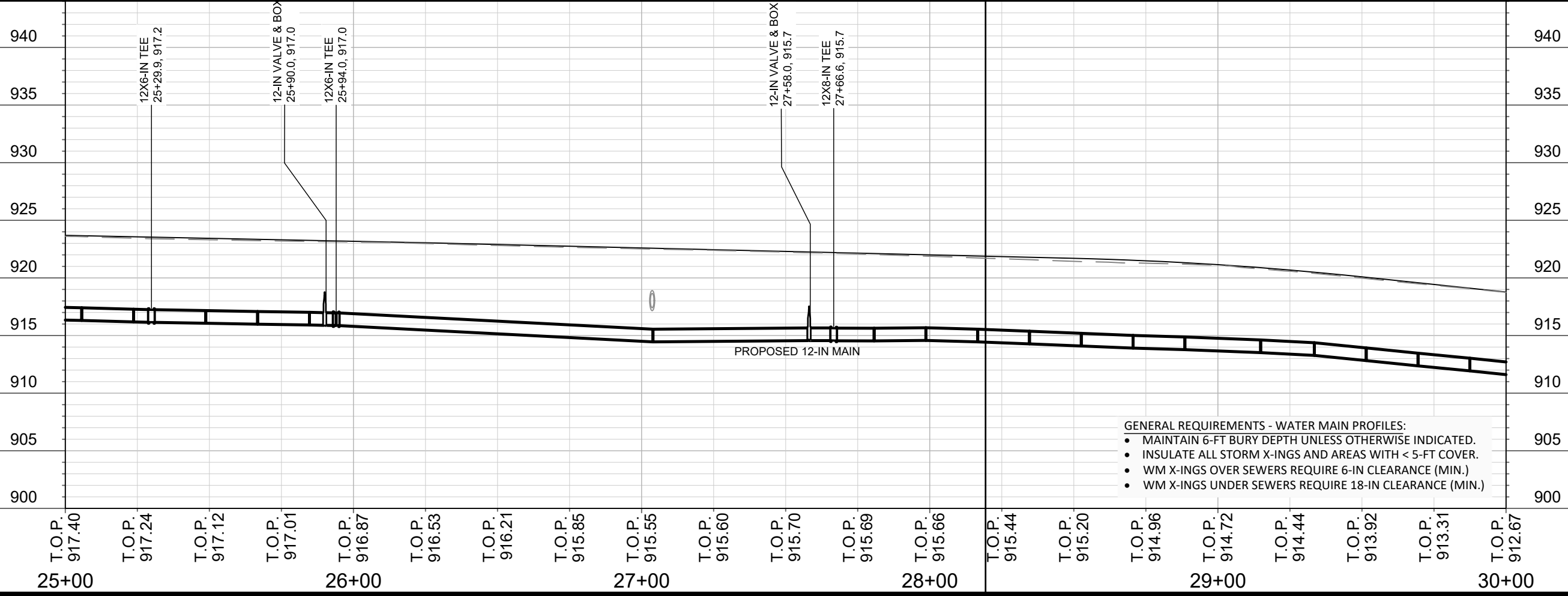
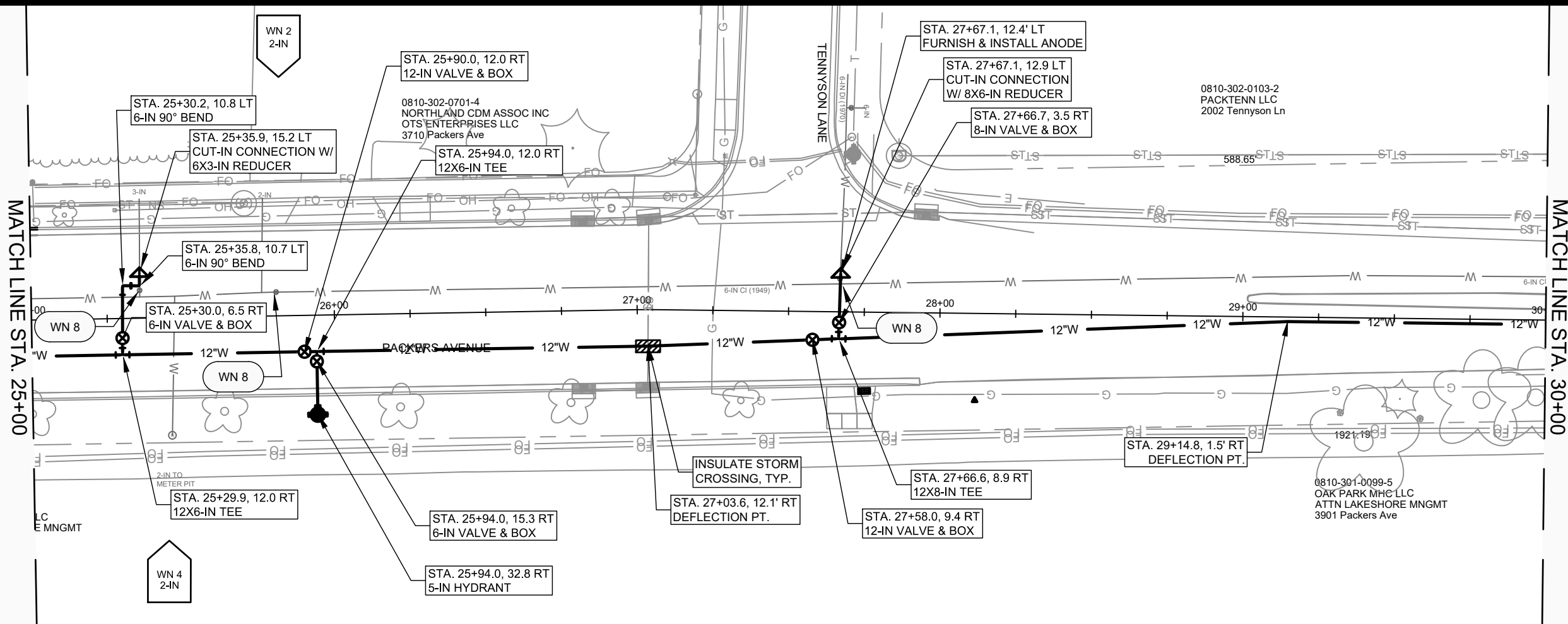
- GENERAL REQUIREMENTS - WATER MAIN PROFILES:**
- MAINTAIN 6-FT BURY DEPTH UNLESS OTHERWISE INDICATED.
 - INSULATE ALL STORM X-INGS AND AREAS WITH < 5-FT COVER.
 - WM X-INGS OVER SEWERS REQUIRE 6-IN CLEARANCE (MIN.)
 - WM X-INGS UNDER SEWERS REQUIRE 18-IN CLEARANCE (MIN.)

SCALE: 1" = 40'
 DESIGNED BY: KBM
 MADISON WATER UTILITY
 119 E OLIN AVE, MADISON, WI 53713
 PRINTING DATE: 3/2/20

PACKERS AVENUE RESURFACING ASSESSMENT DISTRICT - 2020
 WATER PLAN & PROFILE: PACKERS AVE WATER
CITY OF MADISON, WISCONSIN
 CONTRACT NO: 8502




12564
 W-3



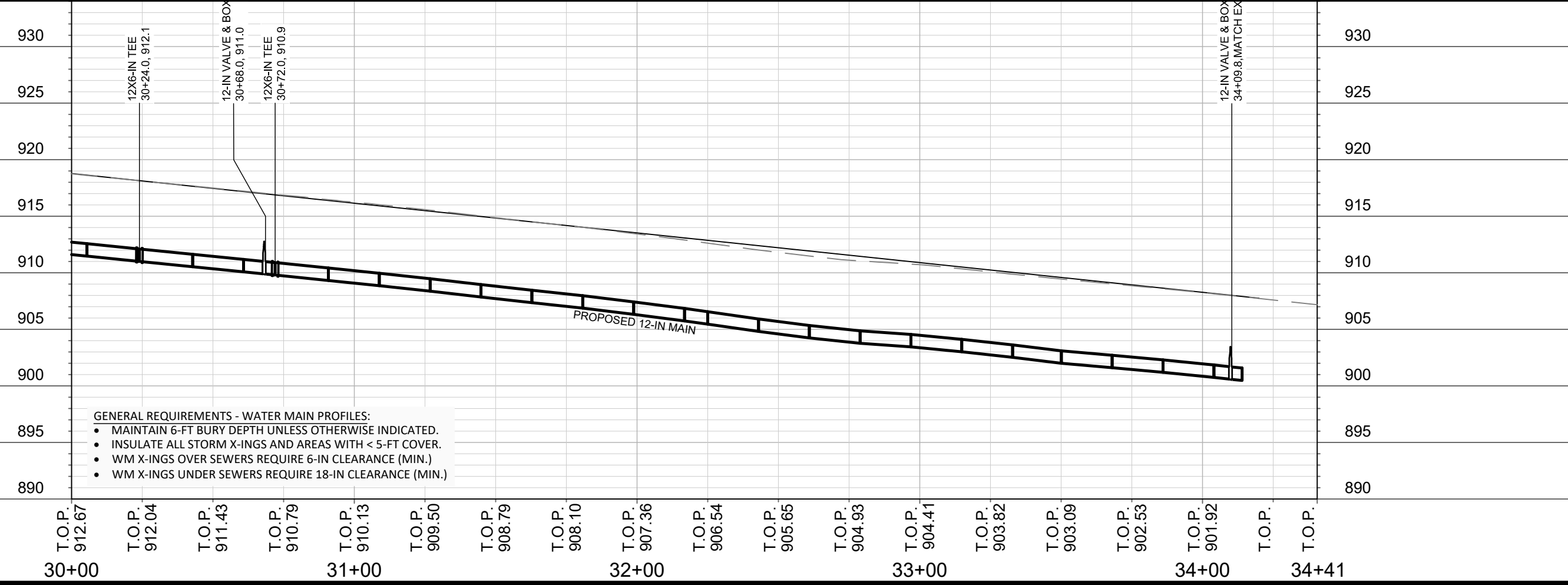
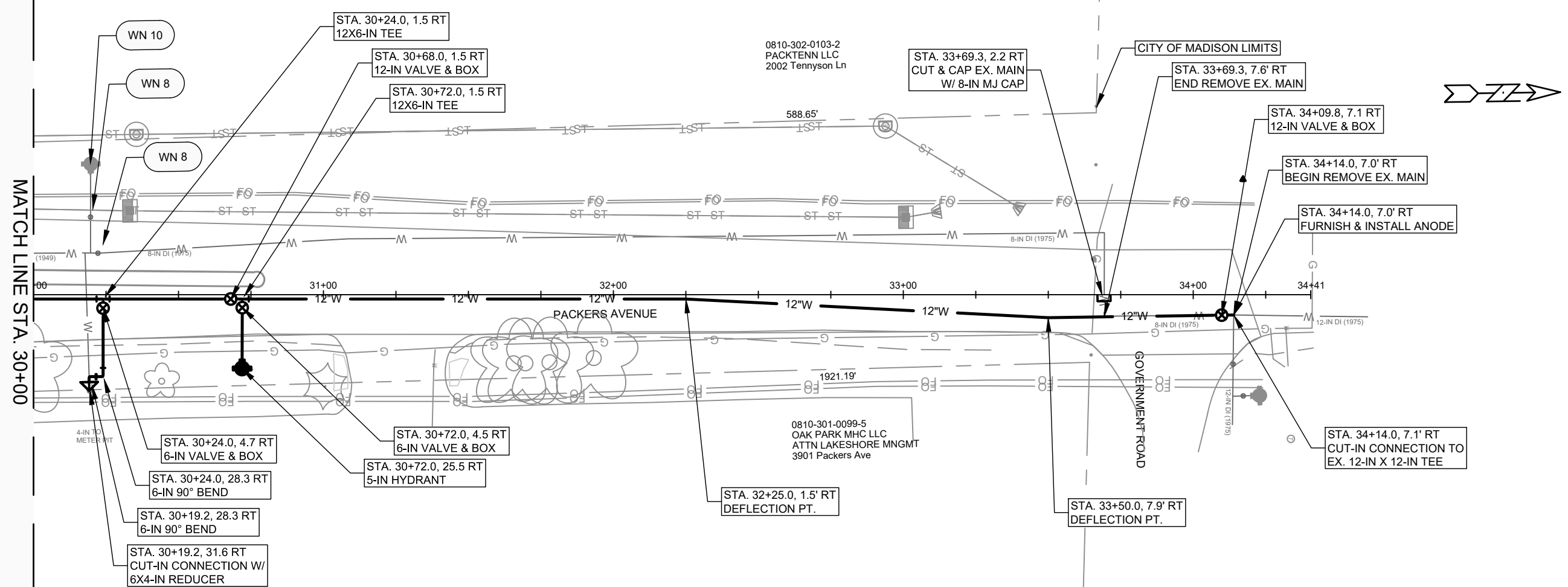
- GENERAL REQUIREMENTS - WATER MAIN PROFILES:**
- MAINTAIN 6-FT BURY DEPTH UNLESS OTHERWISE INDICATED.
 - INSULATE ALL STORM X-INGS AND AREAS WITH < 5-FT COVER.
 - WM X-INGS OVER SEWERS REQUIRE 6-IN CLEARANCE (MIN.)
 - WM X-INGS UNDER SEWERS REQUIRE 18-IN CLEARANCE (MIN.)

SCALE: 1" = 40'
 DESIGNED BY: KBM
 MADISON WATER UTILITY
 119 E OLIN AVE, MADISON, WI 53713
 PRINTING DATE: 3/2/20

PACKERS AVENUE RESURFACING ASSESSMENT DISTRICT - 2020
 WATER PLAN & PROFILE: PACKERS AVE WATER
 CITY OF MADISON, WISCONSIN
 CONTRACT NO: 8502



12564
 W-4



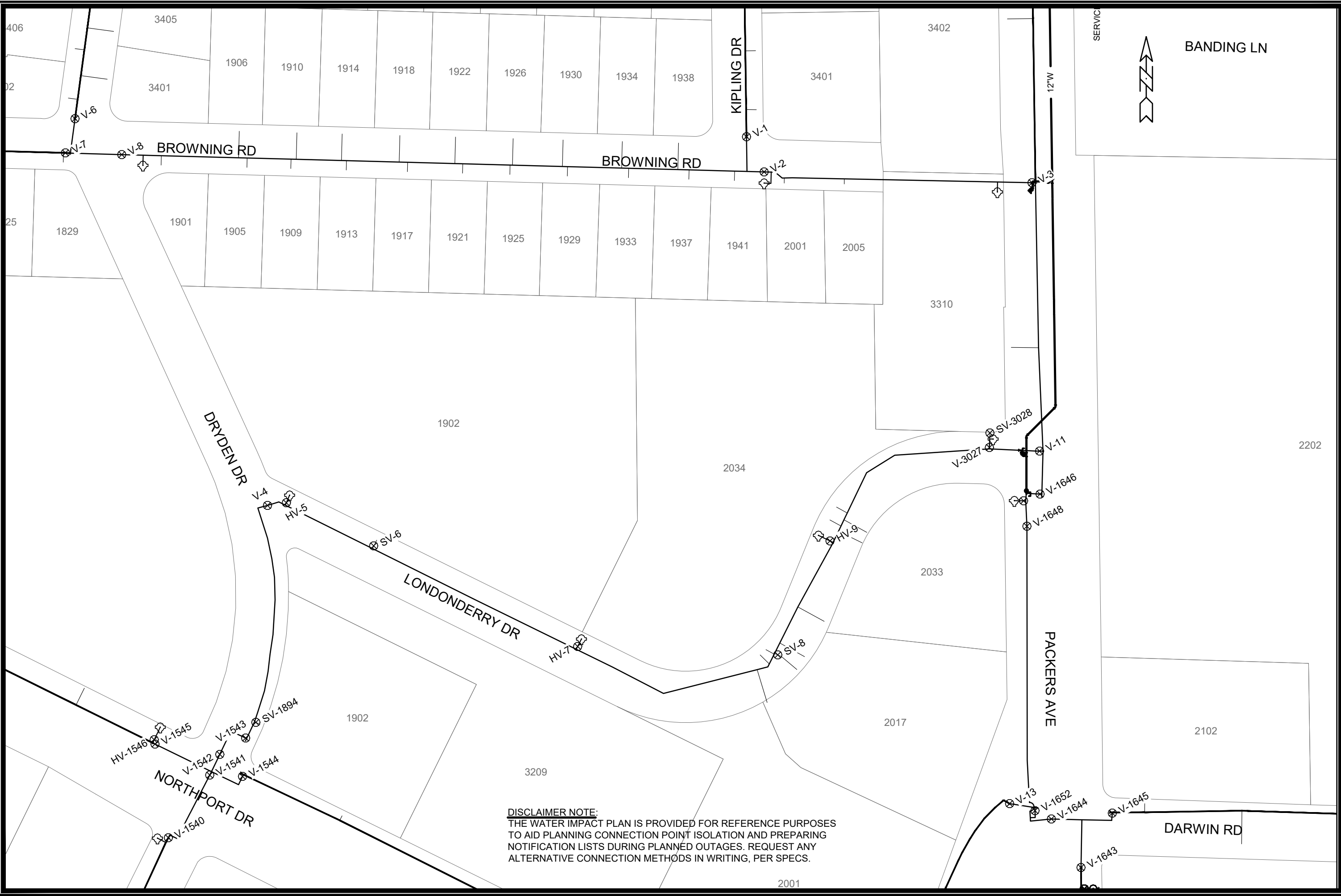
- GENERAL REQUIREMENTS - WATER MAIN PROFILES:**
- MAINTAIN 6-FT BURY DEPTH UNLESS OTHERWISE INDICATED.
 - INSULATE ALL STORM X-INGS AND AREAS WITH < 5-FT COVER.
 - WM X-INGS OVER SEWERS REQUIRE 6-IN CLEARANCE (MIN.)
 - WM X-INGS UNDER SEWERS REQUIRE 18-IN CLEARANCE (MIN.)

SCALE: 1" = 40'
 DESIGNED BY: KBM
 MADISON WATER UTILITY
 119 E OLIN AVE, MADISON, WI 53713
 PRINTING DATE: 3/2/20

PACKERS AVENUE RESURFACING ASSESSMENT DISTRICT - 2020
 WATER PLAN & PROFILE: PACKERS AVE WATER
CITY OF MADISON, WISCONSIN
 CONTRACT NO: 8502



12564
 W-5



DISCLAIMER NOTE:
 THE WATER IMPACT PLAN IS PROVIDED FOR REFERENCE PURPOSES TO AID PLANNING CONNECTION POINT ISOLATION AND PREPARING NOTIFICATION LISTS DURING PLANNED OUTAGES. REQUEST ANY ALTERNATIVE CONNECTION METHODS IN WRITING, PER SPECS.

SCALE: 1" = 100'
 DESIGNED BY: KBM
 MADISON WATER UTILITY
 119 E OLIN AVE, MADISON, WI 53713
 PRINTING DATE: 1/22/2020

PACKERS AVENUE RESURFACING ASSESSMENT DISTRICT - 2020
 WATER IMPACT PLAN
CITY OF MADISON, WISCONSIN
 CONTRACT NO: 8502



12564
 W-6



DISCLAIMER NOTE:
 THE WATER IMPACT PLAN IS PROVIDED FOR REFERENCE PURPOSES TO AID PLANNING CONNECTION POINT ISOLATION AND PREPARING NOTIFICATION LISTS DURING PLANNED OUTAGES. REQUEST ANY ALTERNATIVE CONNECTION METHODS IN WRITING, PER SPECS.

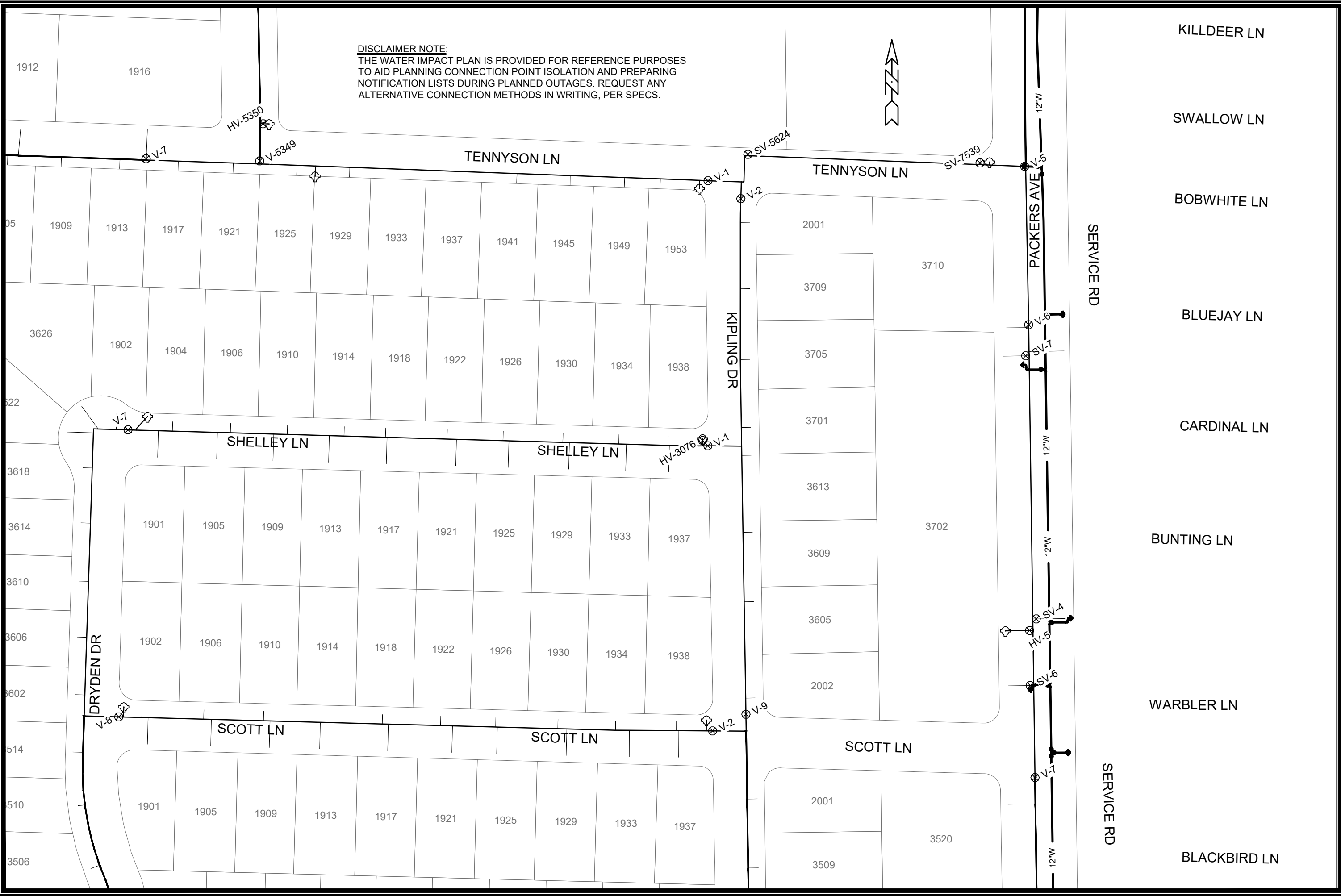
SCALE: 1" = 100'
 DESIGNED BY: KBM
 MADISON WATER UTILITY
 119 E OLIN AVE, MADISON, WI 53713
 PRINTING DATE: 1/22/2020

PACKERS AVENUE RESURFACING ASSESSMENT DISTRICT - 2020
 WATER IMPACT PLAN
 CITY OF MADISON, WISCONSIN
 CONTRACT NO: 8502



12564
 W-7

DISCLAIMER NOTE:
 THE WATER IMPACT PLAN IS PROVIDED FOR REFERENCE PURPOSES
 TO AID PLANNING CONNECTION POINT ISOLATION AND PREPARING
 NOTIFICATION LISTS DURING PLANNED OUTAGES. REQUEST ANY
 ALTERNATIVE CONNECTION METHODS IN WRITING, PER SPECS.

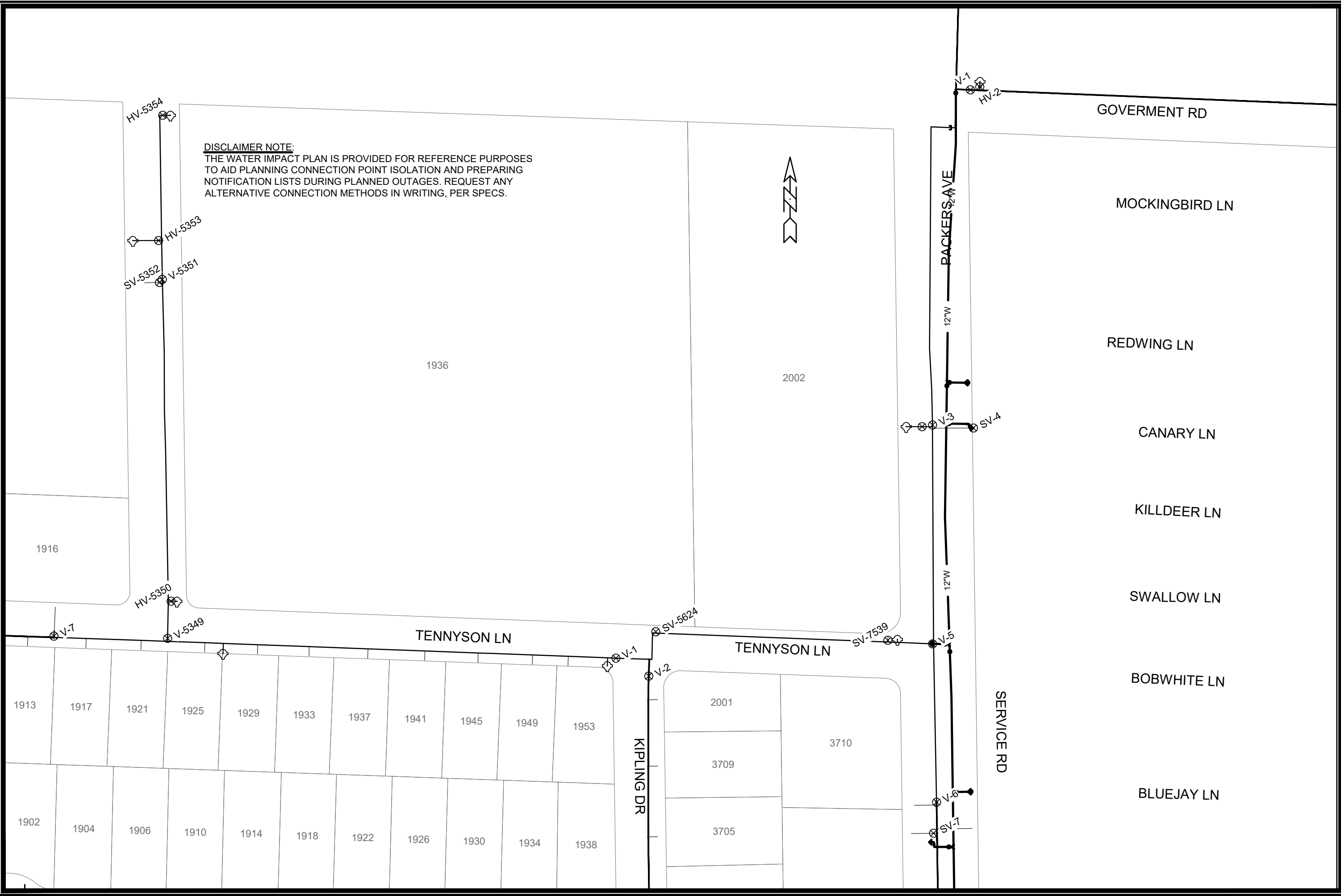


SCALE: 1" = 100'
 DESIGNED BY: KBM
 MADISON WATER UTILITY
 119 E OLIN AVE, MADISON, WI 53713
 PRINTING DATE: 1/22/2020

PACKERS AVENUE RESURFACING ASSESSMENT DISTRICT - 2020
 WATER IMPACT PLAN
 CITY OF MADISON, WISCONSIN
 CONTRACT NO: 8502



12564
 W-8



DISCLAIMER NOTE:
 THE WATER IMPACT PLAN IS PROVIDED FOR REFERENCE PURPOSES TO AID PLANNING CONNECTION POINT ISOLATION AND PREPARING NOTIFICATION LISTS DURING PLANNED OUTAGES. REQUEST ANY ALTERNATIVE CONNECTION METHODS IN WRITING, PER SPECS.

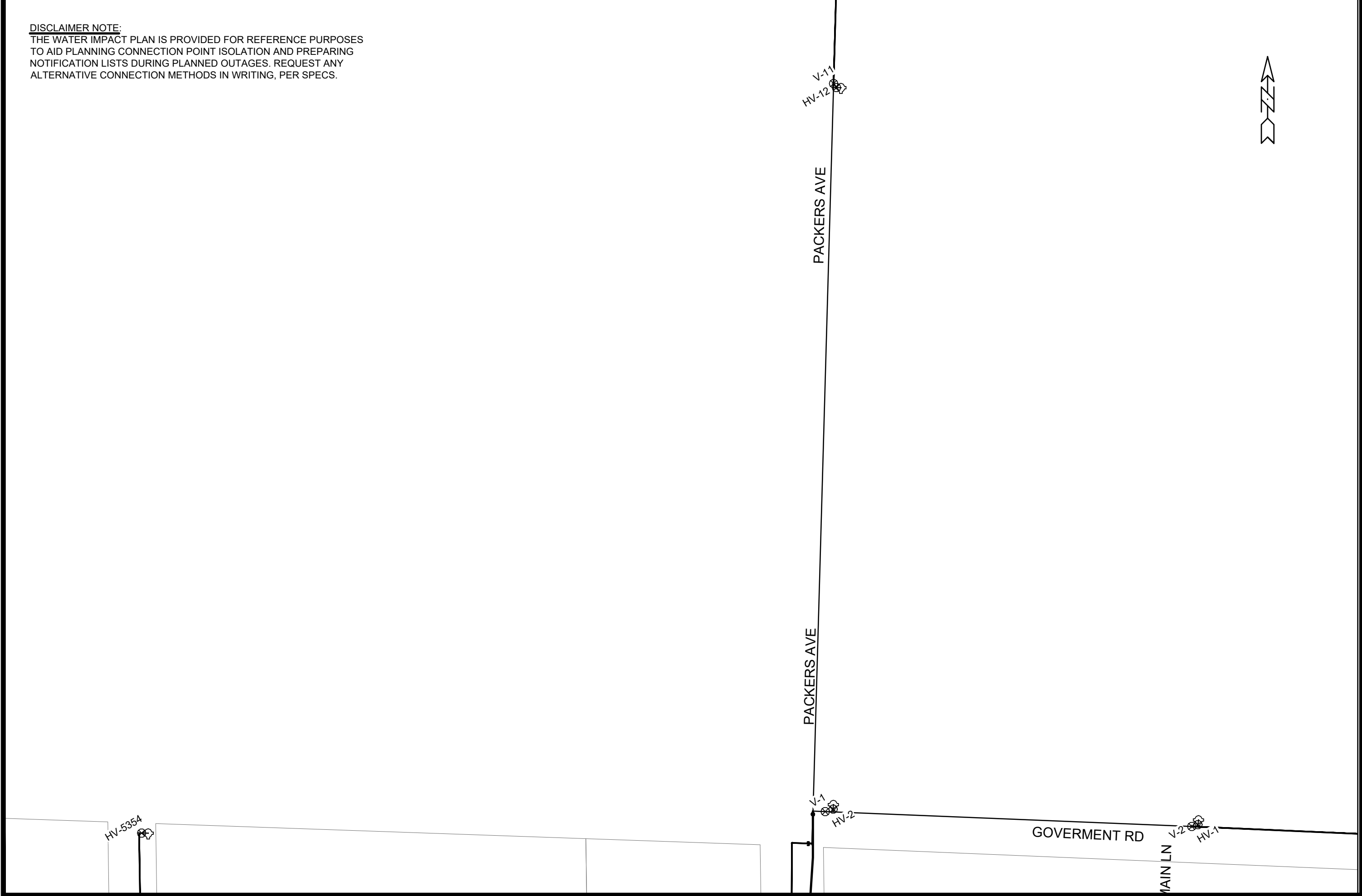
SCALE: 1" = 100'
 DESIGNED BY: KBM
 MADISON WATER UTILITY
 119 E OLIN AVE, MADISON, WI 53713
 PRINTING DATE: 1/22/2020

PACKERS AVENUE RESURFACING ASSESSMENT DISTRICT - 2020
 WATER IMPACT PLAN
 CITY OF MADISON, WISCONSIN
 CONTRACT NO: 8502



12564
 W-9

DISCLAIMER NOTE:
THE WATER IMPACT PLAN IS PROVIDED FOR REFERENCE PURPOSES
TO AID PLANNING CONNECTION POINT ISOLATION AND PREPARING
NOTIFICATION LISTS DURING PLANNED OUTAGES. REQUEST ANY
ALTERNATIVE CONNECTION METHODS IN WRITING, PER SPECS.



SCALE: 1" = 120'
DESIGNED BY: KBM
MADISON WATER UTILITY
119 E OLIN AVE, MADISON, WI 53713
PRINTING DATE: 1/22/2020

PACKERS AVENUE RESURFACING ASSESSMENT DISTRICT - 2020
WATER IMPACT PLAN
CITY OF MADISON, WISCONSIN
CONTRACT NO: 8502



12564
W-10

CONSTRUCTION NOTES:

1. CONSTRUCT NEW WATER MAIN 6.0' BELOW FINISHED GRADE, UNLESS OTHERWISE NOTED. INSULATE MAIN WITH POLYSTYRENE BOARD AT UTILITY CROSSINGS OR OTHER AREAS IDENTIFIED BY ENGINEER AS HAVING INADEQUATE COVER.
2. VERIFY SIZE OF EXISTING WATER SERVICES AND RECONNECT SERVICES AS INDICATED.
3. MINIMIZE DISRUPTION OF SERVICE TO CUSTOMERS. NOTIFY PER CONTRACT REQUIREMENTS OF ANY PLANNED WATER OUTAGE.
4. THE EXISTING UTILITIES SHOWN ON THIS REPRESENT THE BEST INFORMATION AVAILABLE TO THE WATER UTILITY AT THE TIME OF PLAN REPARATION. CONTRACTOR IS RESPONSIBLE OR HAVING EACH UTILITY LOCATED PRIOR TO COMMENCING WORK.

- WN1 REPLACE THE EXISTING LEAD SERVICE WITH A NEW COPPER SERVICE.
- WN-2 EXTEND AND RECONNECT THE EXISTING COPPER SERVICE TO THE NEW WATER MAIN.
- WN-3 EXISTING SERVICE TO BE ABANDONED WHEN THE WATER MAIN IS CUT OFF.
- WN-4 DISCONNECT FROM THE OLD WATER MAIN AND RECONNECT THE EXISTING COPPER WATER SERVICE LATERAL TO THE NEW WATER MAIN.
- WN-5 RELOCATE THE EXISTING FIRE HYDRANT.
- WN-6 ABANDON WATER VALVE ACCESS STRUCTURE.
- WN-7 FURNISH AND INSTALL THE NEW TOP SECTION FOR THE WATER ACCESS STRUCTURE.
- WN-8 ABANDON THE VALVE BOX.
- WN-9 FURNISH THE DITCH, COMPACTION, AND ALL MATERIALS AND LABOR FOR THE INSTALLATION OF NEW SERVICE LATERAL.
- WN-10 REMOVE AND SALVAGE EXISTING HYDRANT
- WN-11 REPLACE THE EXISTING COPPER SERVICE WITH A COPPER SERVICE
- WN-20+ SEE WATER IMPACT PLAN FOR CONNECTION POINT ISOLATION AND WATER SHUT-OFF NOTIFICATION INFORMATION.

WATER UTILITY ULO SCHEDULE

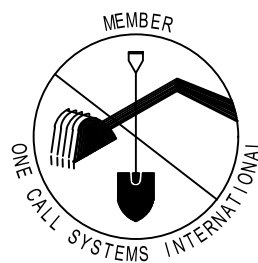
ULO	UTILITY	STATION	OFFSET	SHEET
#W1	FIBER	12+60.8	12.0' RT	W-1
#W2	TV/ELEC	13+92.7	12.0' RT	W-1
#W3	ELEC	16+43.4	12.0' RT	W-2
#W4	ELEC	18+32.8	12.0' RT	W-2

***ESTIMATE OF MATERIALS SUPPLIED BY CONTRACTOR:**

PAY_ITEM_ID	DESCRIPTION	QUANTITY	UNIT
70002	FURNISH AND INSTALL 6-INCH PIPE & FITTINGS	235	LNFT
70003	FURNISH AND INSTALL 8-INCH PIPE & FITTINGS	70	LNFT
70005	FURNISH AND INSTALL 12-INCH PIPE & FITTINGS	2600	LNFT
70031	FURNISH AND INSTALL 6-INCH WATER VALVE	8	EACH
70032	FURNISH AND INSTALL 8-INCH WATER VALVE	3	EACH
70034	FURNISH AND INSTALL 12-INCH WATER VALVE	9	EACH
70040	FURNISH INSTALL AND SALVAGE HYDRANT	4	EACH
70056	RECONNECT 1-INCH SERVICE LATERAL	3	EACH
70057	RECONNECT 1 1/2-INCH SERVICE LATERAL	1	EACH
70058	RECONNECT 2-INCH SERVICE LATERAL	3	EACH
70101	FURNISH AND INSTALL STYROFOAM	16	LNFT
70111	FURNISH & INSTALL ANODE	4	EACH
71002	8-IN MJ CAP	2	EACH
71013	6-IN MJ PLUG	1	EACH
71110	6-IN 90° BEND	8	EACH
71111	8-IN 90° BEND	4	EACH
71125	12-IN 45° BEND	18	EACH
	6x3-IN REDUCER	2	EACH
71157	6X4-IN REDUCER	2	EACH
71159	8X6-IN REDUCER	2	EACH
71217	12X6-IN TEE	8	EACH
71218	12X8-IN TEE	3	EACH
71340	8X12-IN OFFSET	1	EACH
	POLYWRAP	3360	LNFT
*ESTIMATE OF MATERIALS SUPPLIED BY WATER UTILITY:			
*ESTIMATE OF MATERIALS SALVAGED:			
<i>* ESTIMATE OF MATERIALS IS FOR INFORMATION ONLY. ENGINEER DOES NOT GUARANTEE ACCURACY OF MATERIAL TAKE-OFF.</i>			

TO OBTAIN LOCATION OF PARTICIPANTS' UNDERGROUND FACILITIES BEFORE YOU DIG IN WISCONSIN
 CALL DIGGERS HOTLINE TOLL FREE
 811 OR 1-800-242-8511
 FAX-A-LOCATE 1-800-338-3860
 TDD (FOR HEARING IMPAIRED) 1-800-542-2289

WIS. STATUTE 182.0175 (1974) REQUIRES MIN. OF 3 WORK DAYS NOTICE BEFORE YOU EXCAVATE.

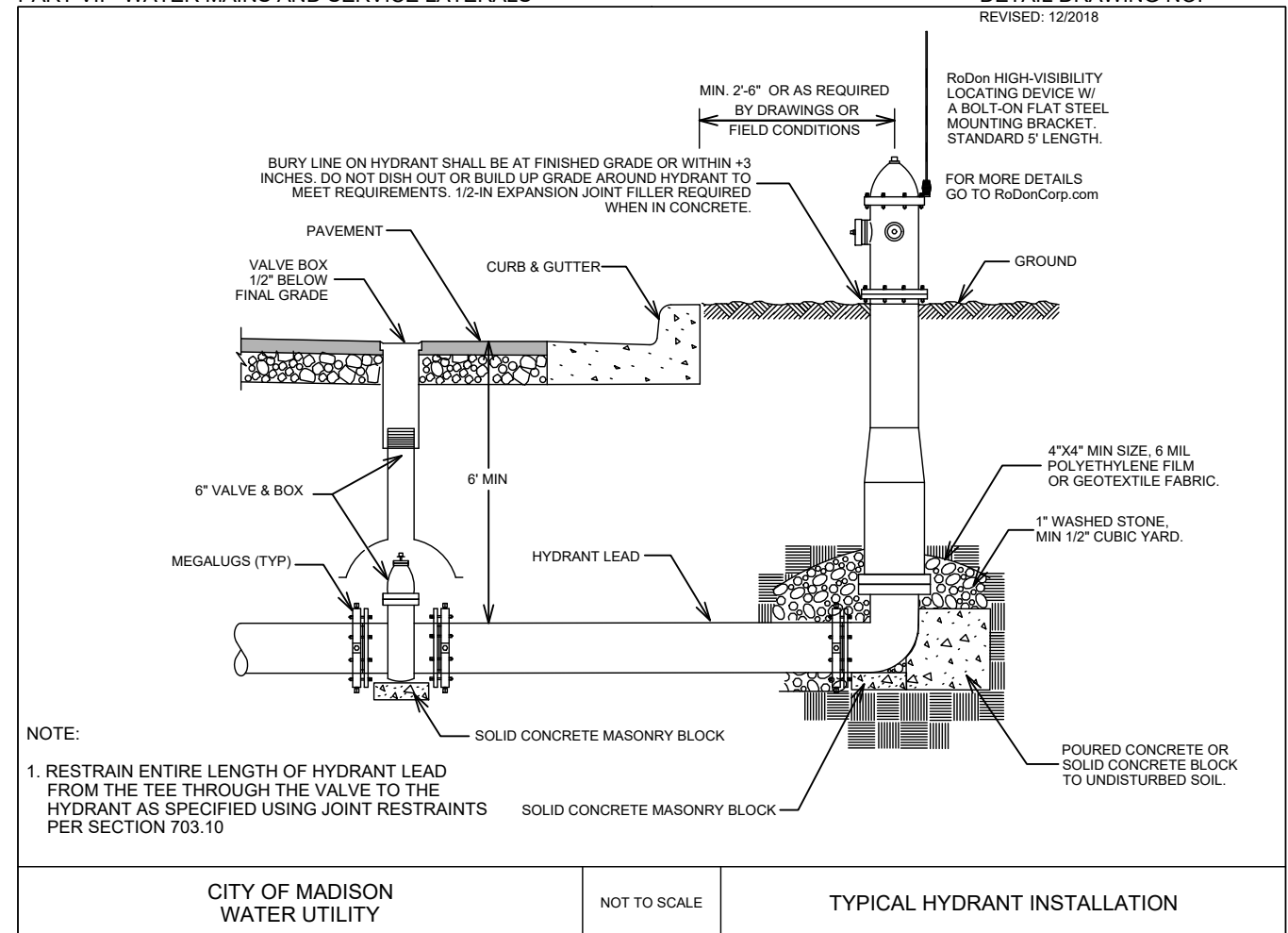


DISCLAIMER NOTE: UTILITY LOCATIONS SHOWN ARE APPROXIMATE ONLY. IT SHALL BE THE CONTRACTOR'S RESPONSIBILITY TO DETERMINE THE EXACT HORIZONTAL AND VERTICAL LOCATION OF ALL EXISTING UNDERGROUND AND OVERHEAD UTILITIES PRIOR TO COMMENCING WORK.

PART VII - WATER MAINS AND SERVICE LATERALS

DETAIL DRAWING NO. 7.04

REVISED: 12/2018



NOTE:

1. RESTRAIN ENTIRE LENGTH OF HYDRANT LEAD FROM THE TEE THROUGH THE VALVE TO THE HYDRANT AS SPECIFIED USING JOINT RESTRAINTS PER SECTION 703.10

CITY OF MADISON WATER UTILITY

NOT TO SCALE

TYPICAL HYDRANT INSTALLATION

PACKERS AVENUE RESURFACING ASSESSMENT DISTRICT - 2020

WATER ESTIMATE OF MATERIALS

CITY OF MADISON, WISCONSIN

SCALE:

DESIGNED BY: KBM
 MADISON WATER UTILITY
 119 E OLIN AVE, MADISON, WI 53713
 PRINTING DATE:

CONTRACT NO: 8502



12564

W-11