



Madison, Wisconsin

CITY OF MADISON

CITY ENGINEERING DIVISION

DEPARTMENT OF PUBLIC WORKS

PLAN OF PROPOSED IMPROVEMENT

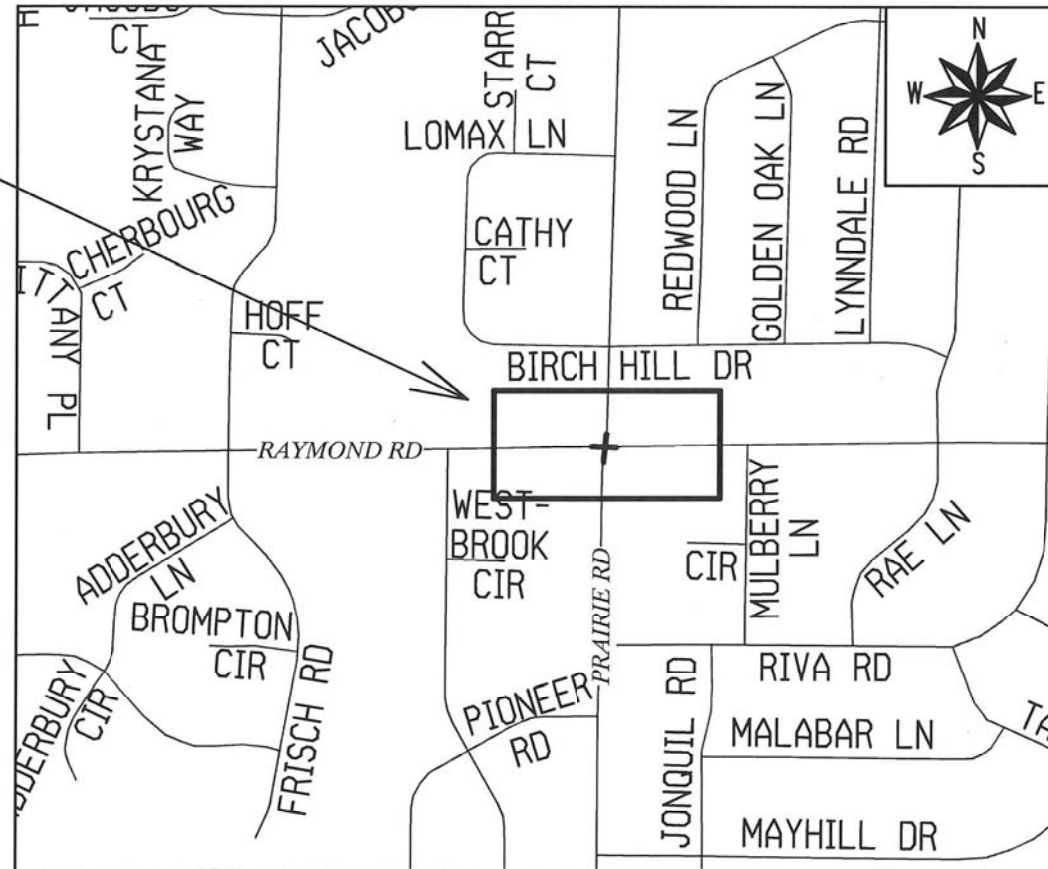
RAYMOND-PRAIRIE TRAFFIC SIGNAL

INDEX OF SHEETS

SHEET NO. E1-E8	ELECTRICAL PLANS
SHEET NO. E9-E10	ELECTRICAL QUANTITIES
SHEET NO. PM1-PM3	PAVEMENT MARKING PLANS
SHEET NO. P1	SIDEWALK PLANS

CITY PROJECT NO. 12487
CONTRACT NO. 8555

PROJECT
LOCATION



PUBLIC IMPROVEMENT PROJECT APPROVED

FEBRUARY 25, 2020

BY THE COMMON COUNCIL OF MADISON, WISCONSIN

PUBLIC IMPROVEMENT DESIGN APPROVED BY:

Christy Bachmann 4-1-20

City Engineer Date

STREET DESIGNED BY:



STREET LIGHTING AND TRAFFIC SIGNALS DESIGNED BY:



PLOT SCALE: 1 IN:1 FT., XREF

PLOT NAME: ----

REV. DATE: 3/3/2020 10:07 AM

ORIGINATOR: CITY_OF_MADISON

GENERAL NOTES:

1. ALL LOCATIONS ARE APPROXIMATE. THE TRAFFIC ENGINEER SHALL APPROVE FINAL LOCATIONS, INCLUDING SETBACK, IN THE FIELD AFTER CONTRACTOR SURVEYS STAKING. THE CONTRACTOR SHALL NOTIFY JERRY SCHIPPA (267-1969) CITY TRAFFIC ENGINEERING, AT LEAST 24-HRS IN ADVANCE OF NEEDING CONDUIT OR BASE LOCATIONS MARKED.
2. THE CONTRACTOR SHALL DO ALL WORK IN ACCORDANCE WITH "CITY OF MADISON STANDARD SPECIFICATIONS FOR PUBLIC WORKS CONSTRUCTION, 2020 EDITION" AND ALL ADDENDUMS THERETO. ALL CONDUIT SHALL BE PVC, SCHEDULE 80 UNDER PAVEMENT OR SCHEDULE 40 OTHERWISE, PULL WIRE REQUIRED AS PER STANDARD SPECIFICATIONS.
3. THE CONTRACTOR SHALL CALL MIKE BENZSCHAWEL (266-9031) AT THE TRAFFIC ENGINEERING SHOP AT LEAST 24-HRS IN ADVANCE OF POURING BASES, INSTALLING ELECTRICAL HANDHOLES OR BURYING CONDUIT TO ARRANGE FOR INSPECTION.
4. ANY WORK COMPLETED WITHOUT INSPECTION IS SUBJECT TO REJECTION.
5. EXISTING STREET LIGHTS SHALL BE IN SERVICE EVERY NIGHT.
6. THE CONTRACTOR SHALL ARRANGE FOR PICK UP OF THE FOLLOWING CITY FURNISHED MATERIALS, WHICH SHOULD BE ARRANGED FOR PICK UP BY CALLING ED SMITH, TRAFFIC ENGINEERING SHOP, 266-9034 1120 SAYLE STREET.
 - (16) 3/4" BY 19" ANCHOR BOLTS FOR TYPE G BASES
 - (8) 1" BY 40" ANCHOR BOLTS FOR LB-3 BASES
 - (20) 1 1/4" BY 48" ANCHOR BOLTS FOR LB-8 BASES

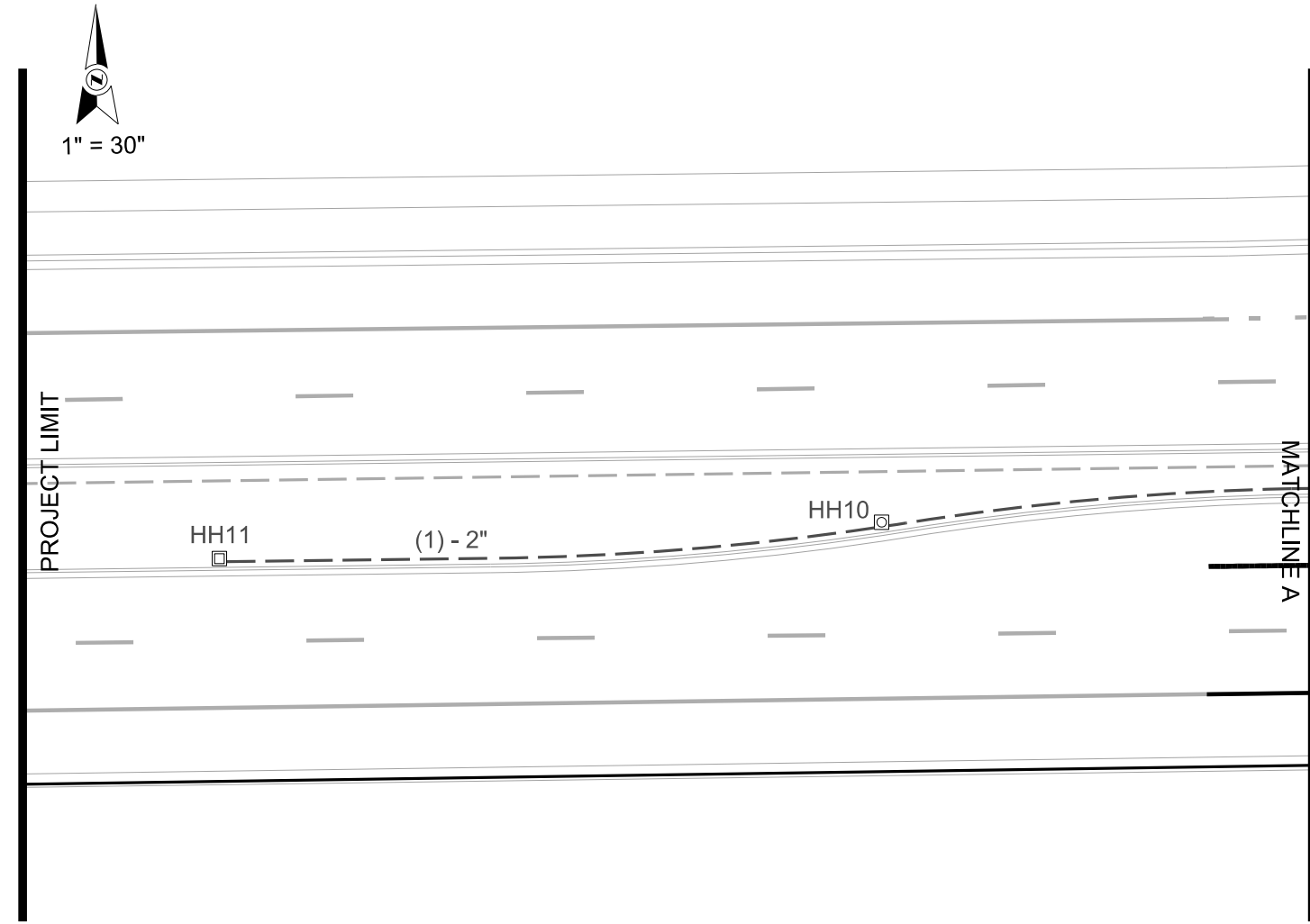
12487

SHEET NO.
E-1

ELECTRICAL PLANS

PRAIRIE RD. - RAYMOND RD. CITY OF MADISON

JLS 1/24/19



LEGEND

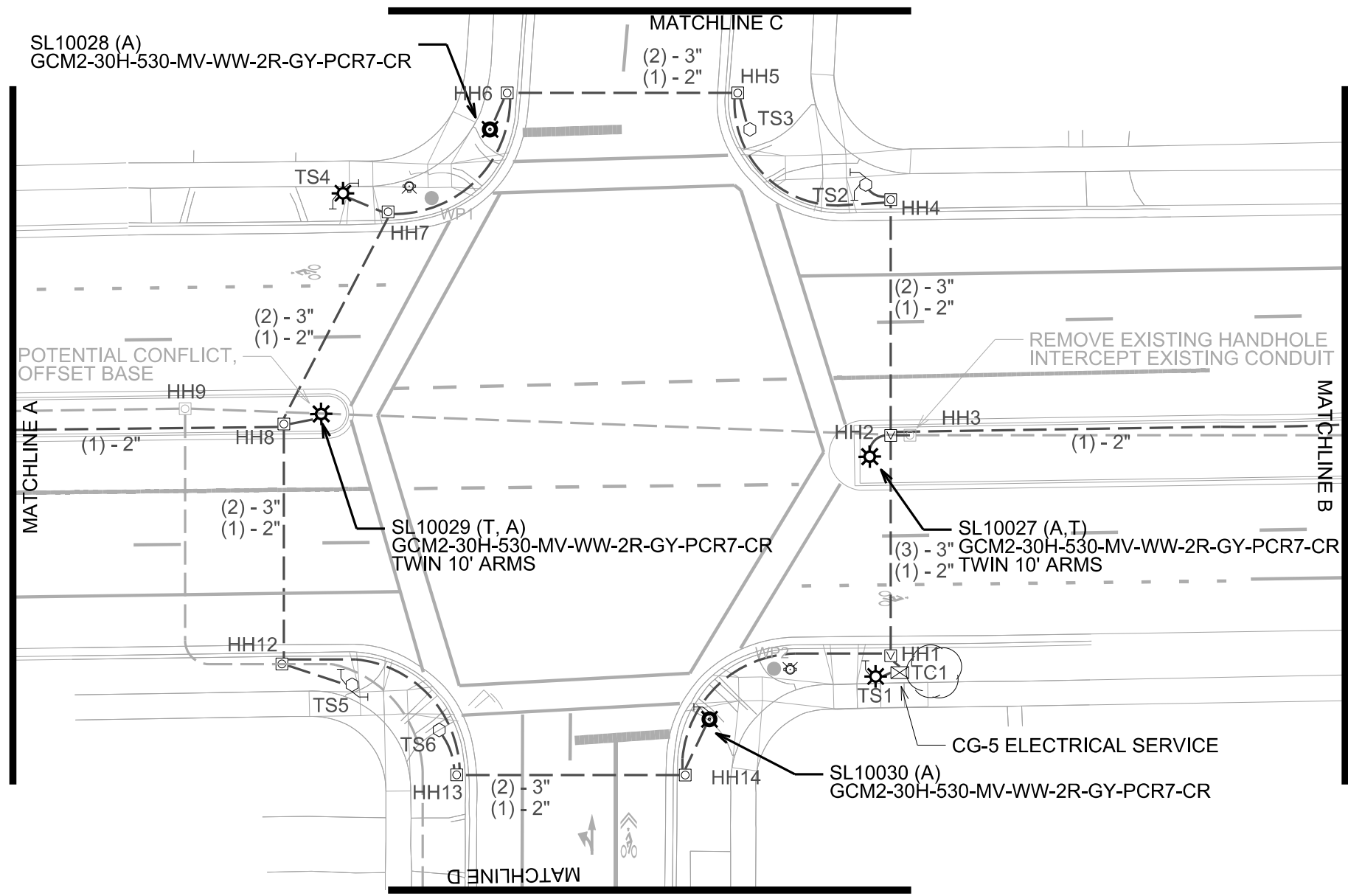
- EXISTING WOOD POLE WITH STREET LIGHT
- EXISTING CONDUIT
- - - INSTALL CONDUIT AS NOTED
- INSTALL TYPE G BASE
- ⊙ INSTALL LB-3 BASE
- ☼ INSTALL LB-8 BASE
- ⊗ BASE PLANNED WITH STREET LIGHT
- FURNISH & INSTALL TYPE I HANDHOLE
- ▣ FURNISH & INSTALL TYPE III HANDHOLE
- ▤ FURNISH & INSTALL TYPE V HANDHOLE
- ⊠ INSTALL TRAFFIC SIGNAL CONTROLLER CABINET BASE

PLOT SCALE:

PLOT NAME:

REV. DATE:

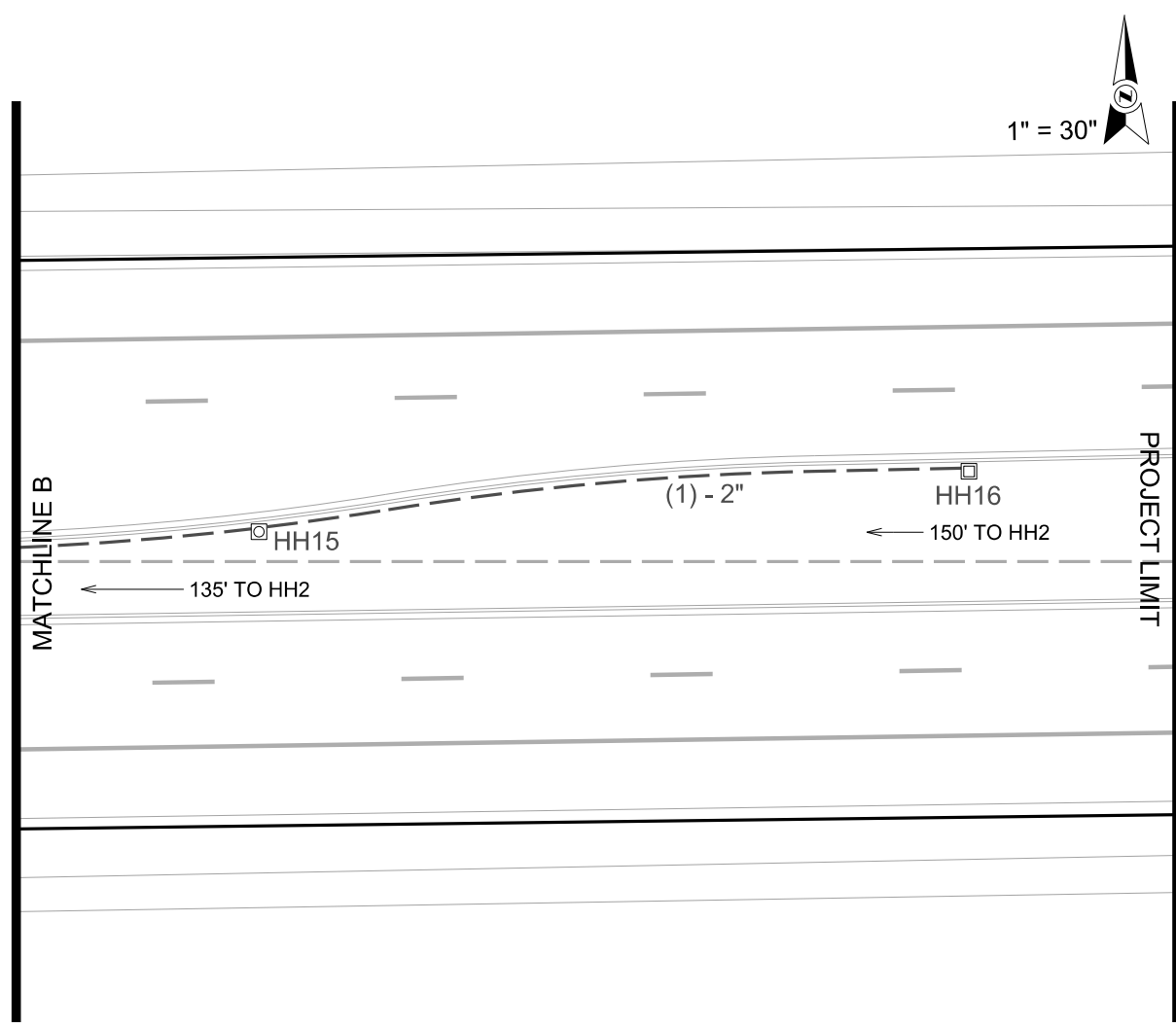
ORIGINATOR: CITY OF MADISON, TRAFFIC ENG. DIV.



LEGEND

- EXISTING WOOD POLE WITH STREET LIGHT
- EXISTING CONDUIT
- - - INSTALL CONDUIT AS NOTED
- INSTALL TYPE G BASE
- ⊙ INSTALL LB-3 BASE
- ☼ INSTALL LB-8 BASE
- ⊗ BASE PLANNED WITH STREET LIGHT
- ⊠ FURNISH & INSTALL TYPE I HANDHOLE
- ⊡ FURNISH & INSTALL TYPE III HANDHOLE
- ⊣ FURNISH & INSTALL TYPE V HANDHOLE
- ⊞ INSTALL TRAFFIC SIGNAL CONTROLLER CABINET BASE

PLOT SCALE:
 PLOT NAME:
 REV. DATE:
 ORIGINATOR: CITY OF MADISON, TRAFFIC ENG. DIV.



LEGEND	
●	EXISTING WOOD POLE WITH STREET LIGHT
---	EXISTING CONDUIT
---	INSTALL CONDUIT AS NOTED
⬡	INSTALL TYPE G BASE
⊙	INSTALL LB-3 BASE
☀	INSTALL LB-8 BASE
⊗	BASE PLANNED WITH STREET LIGHT
⊠	FURNISH & INSTALL TYPE I HANDHOLE
⊠	FURNISH & INSTALL TYPE III HANDHOLE
⊠	FURNISH & INSTALL TYPE V HANDHOLE
⊠	INSTALL TRAFFIC SIGNAL CONTROLLER CABINET BASE

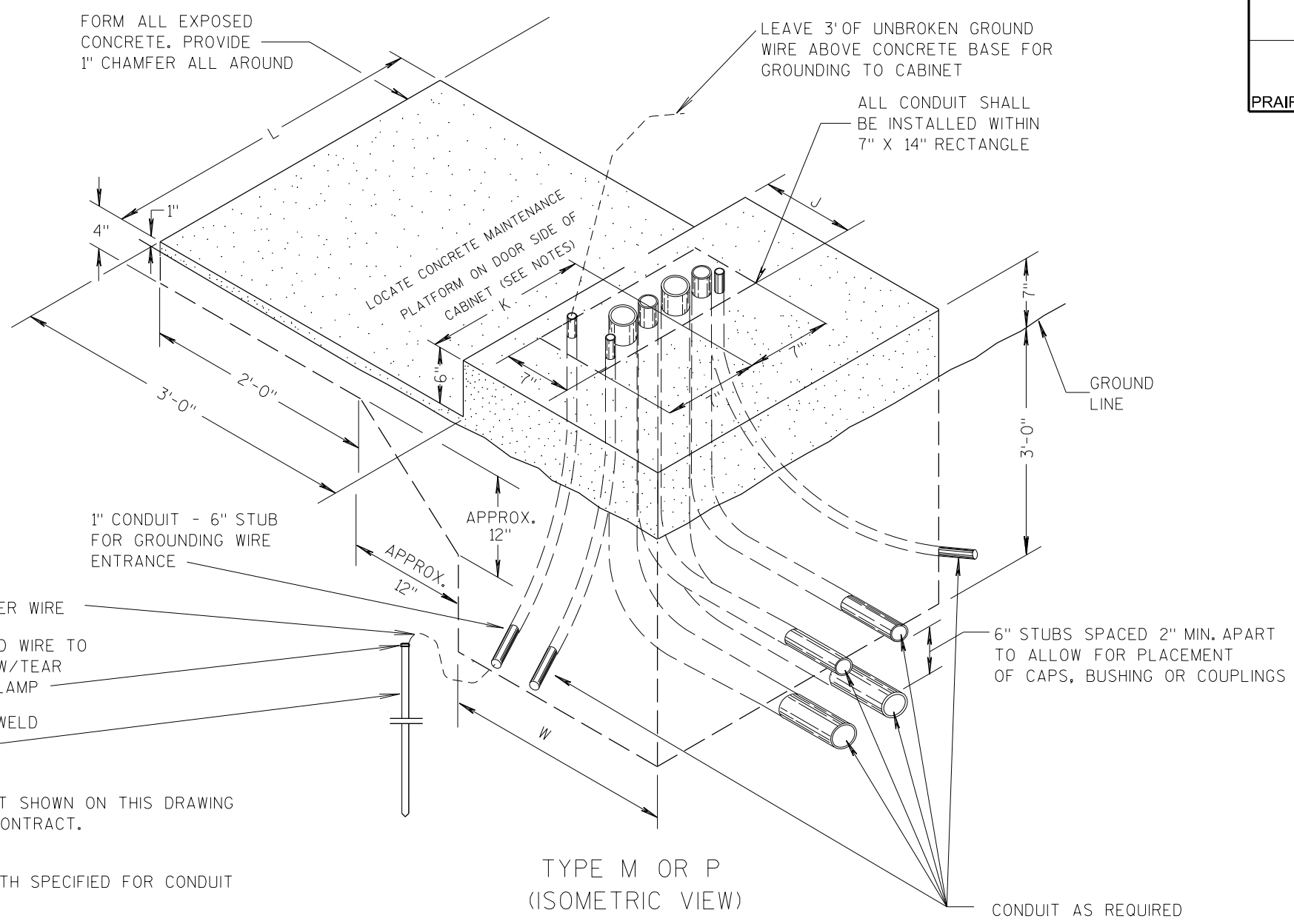
PLOT SCALE:

 PLOT NAME:

 REV. DATE:

 ORIGINATOR: CITY OF MADISON, TRAFFIC ENG. DIV.

CONTROL CABINET BASE TYPE	DIMENSIONS				C.Y. CONCRETE (APPROX.)
	L	W	J	K	
TYPE M	40"	30"	12"	20"	1.132
TYPE P	48"	30"	16"	24"	1.549
TYPE M MODIFIED	-	-	-	-	-
TYPE P MODIFIED	-	-	-	-	-
TYPE OTHER	-	-	-	-	-



GENERAL NOTES

- DETAILS OF CONSTRUCTION, MATERIALS AND WORKMANSHIP NOT SHOWN ON THIS DRAWING SHALL CONFORM TO THE PERTINENT REQUIREMENTS OF THE CONTRACT.
- ALL CONDUIT SHALL BE PVC, SCHEDULE 40
- DEPTH OF CONDUIT EXITING THE BASE SHALL MATCH THE DEPTH SPECIFIED FOR CONDUIT INSTALLATION.
- ANY EXCEPTION TO THE MAXIMUM DEPTH SHALL BE ONLY WITH THE WRITTEN APPROVAL OF THE ENGINEER.
- CONTROL CABINET BASE TOP SURFACES SHALL BE TROWEL FINISHED AND LEVEL.
- MAINTENANCE PLATFORM SHALL NOT BE INSTALLED WHEN THE SURROUNDING AREA IS PAVED.
- MINIMUM BENDING RADIUS OF CONDUIT = 6 X THE DIAMETER.
- ALL CONDUIT ENDS AT THE TOP OF CONCRETE BASES SHALL BE CAPPED OR PLUGGED IMMEDIATELY AFTER PLACEMENT AND BEFORE CONCRETE IS Poured. CONDUITS IN WHICH WIRE OR CABLE IS NOT BEING INSTALLED SHALL REMAIN CAPPED OR PLUGGED.
- CONCRETE FORM DEPTH BELOW FINISHED GRADE SHALL BE 6" MINIMUM. CONCRETE FORMS SHALL BE REMOVED AFTER CONCRETE HAS SET.
- CONDUITS SHALL EXIT THE BASE IN THE DIRECTION OF THE STRUCTURE IT IS TERMINATING INTO.
- MAINTENANCE PLATFORM SIZE MAY VARY ON ACCOUNT OF CONDITIONS. VERIFY THE MAINTENANCE PLATFORM SIZE WITH ENGINEER PRIOR TO POURING BASE.

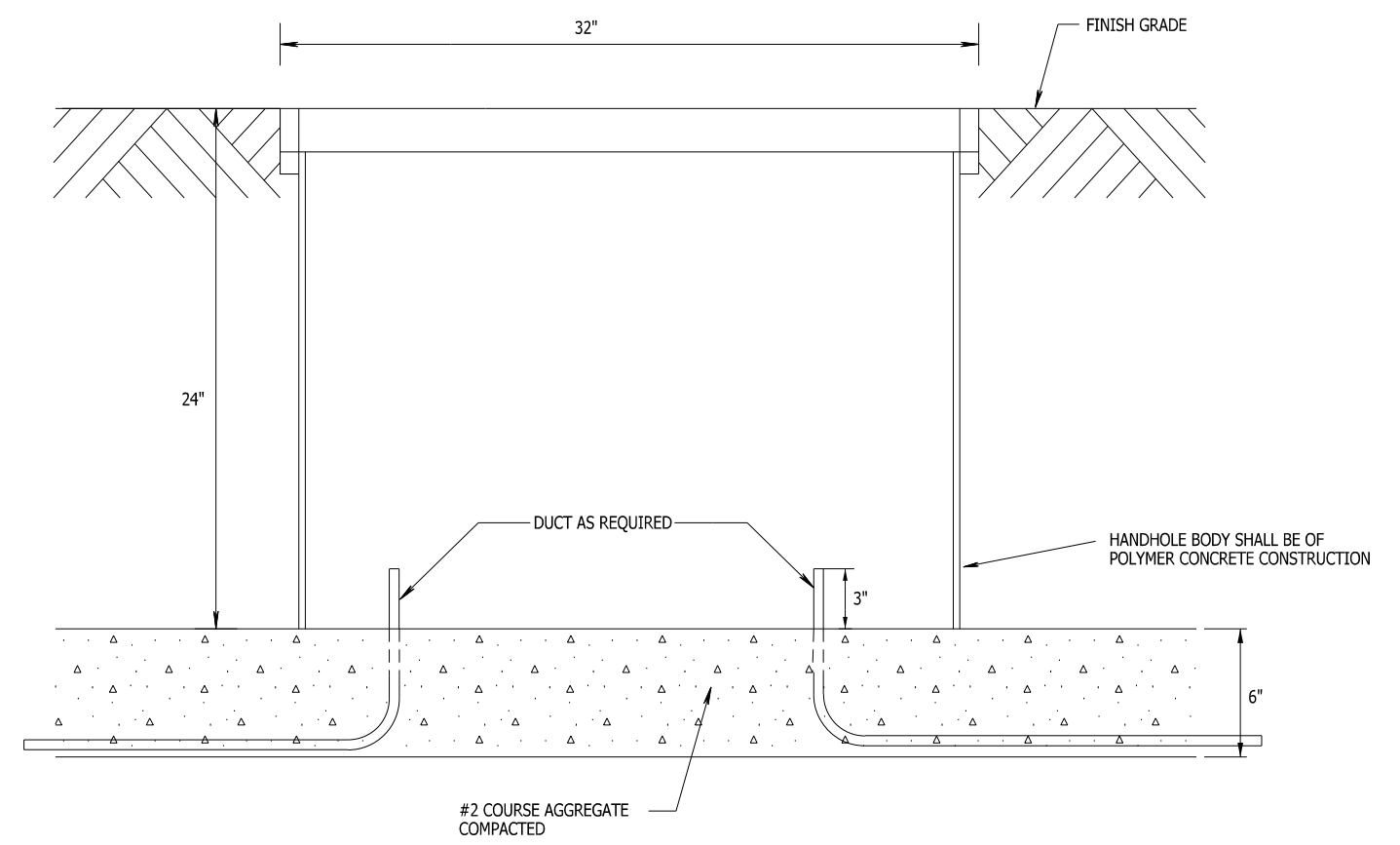
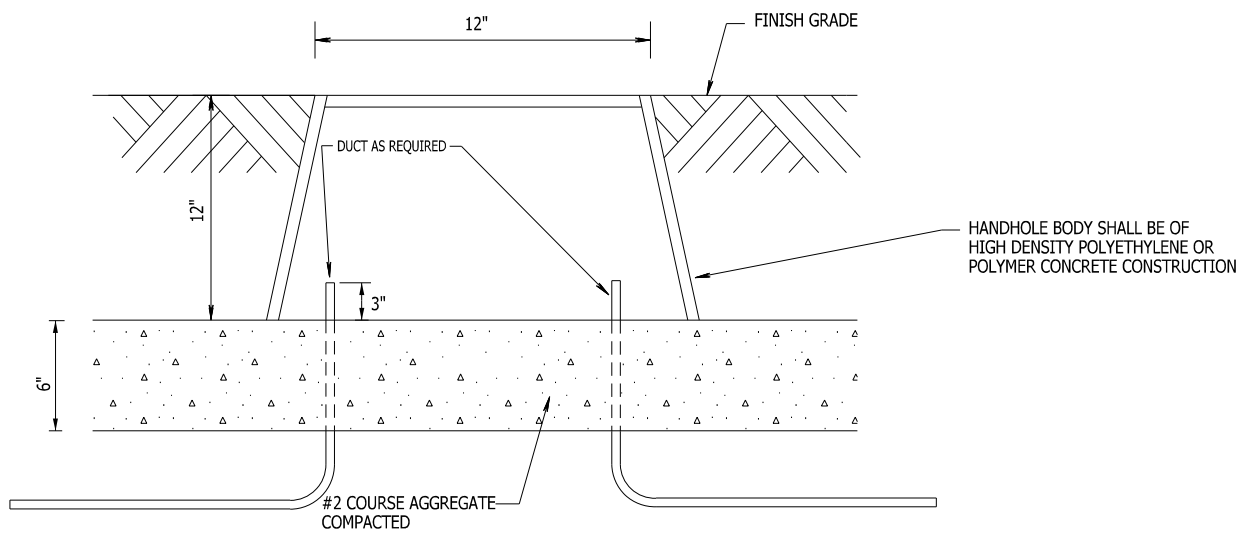
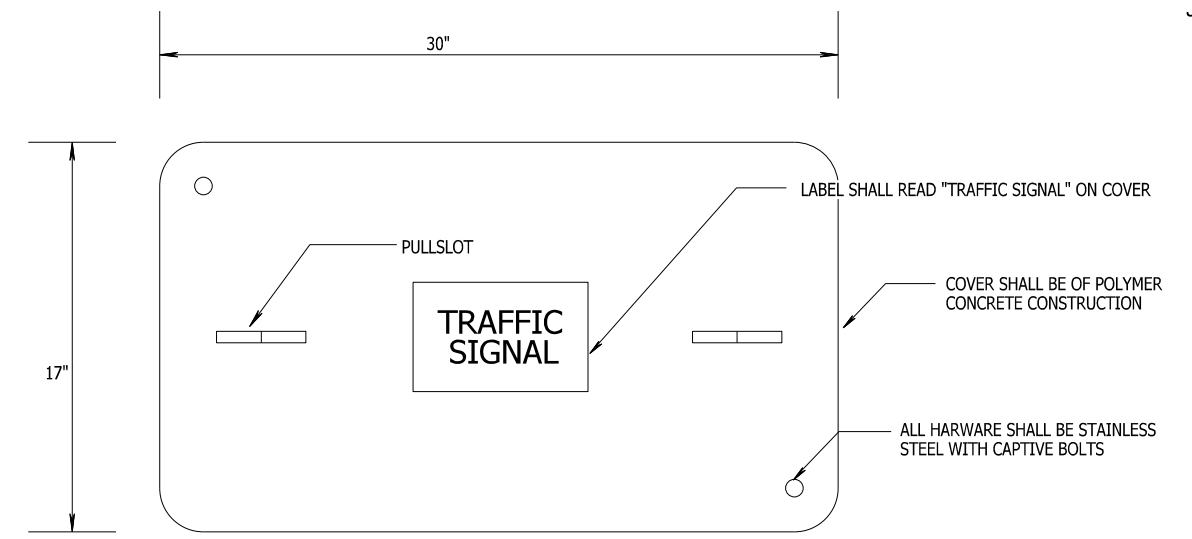
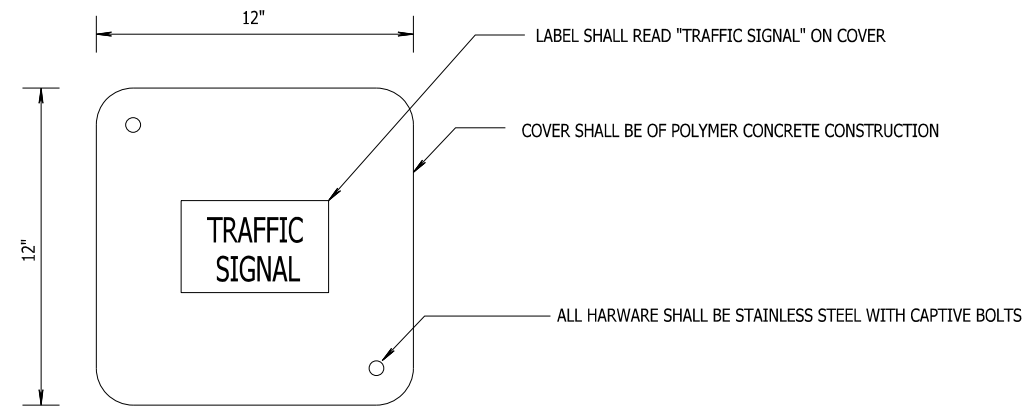
CONCRETE CONTROL CABINET BASES

PLOT SCALE:

 PLOT NAME:

 REV. DATE:

 ORIGINATOR: CITY OF MADISON, TRAFFIC ENG. DIV.



DETAIL: TYPE III HANDHOLE
NTS

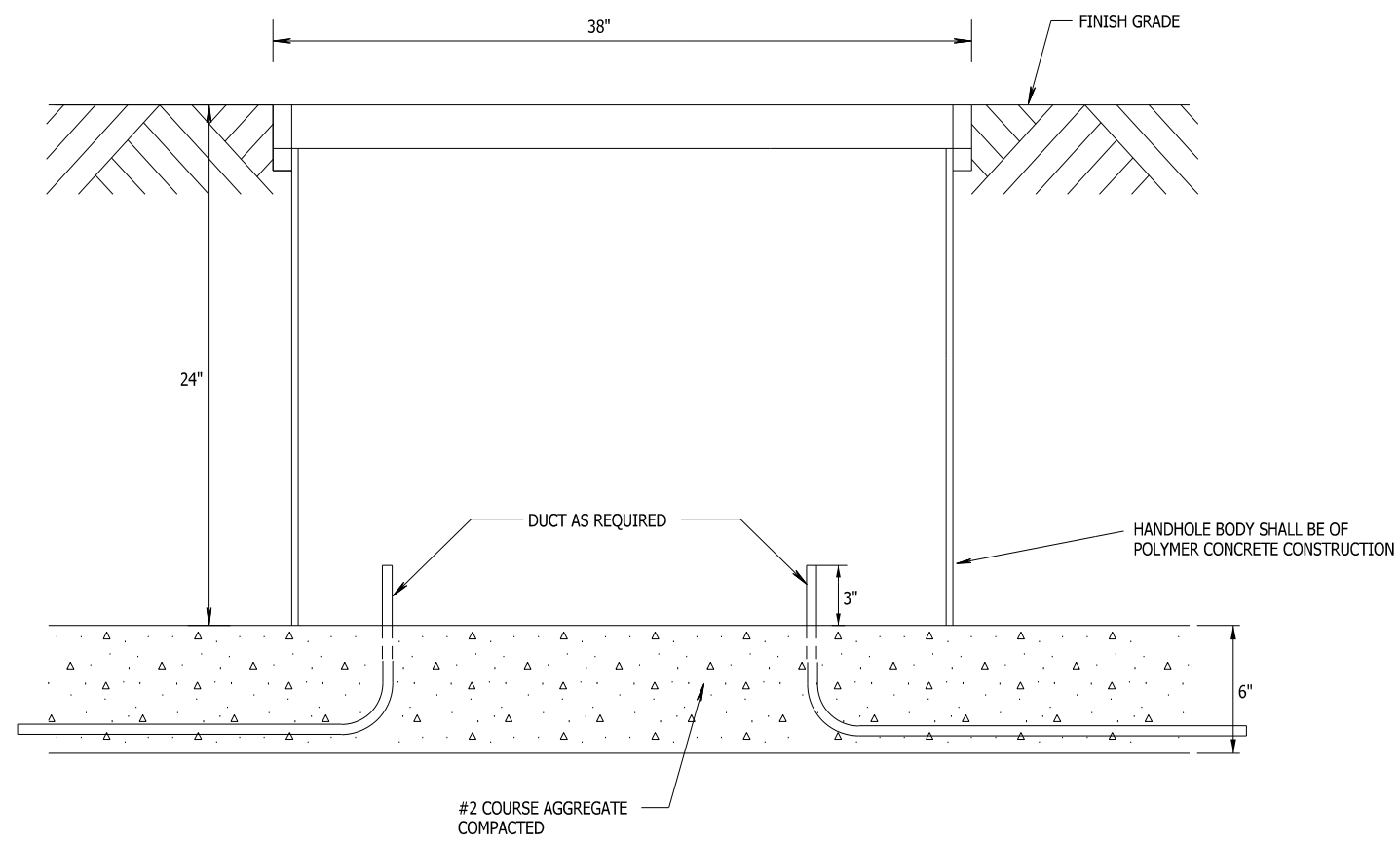
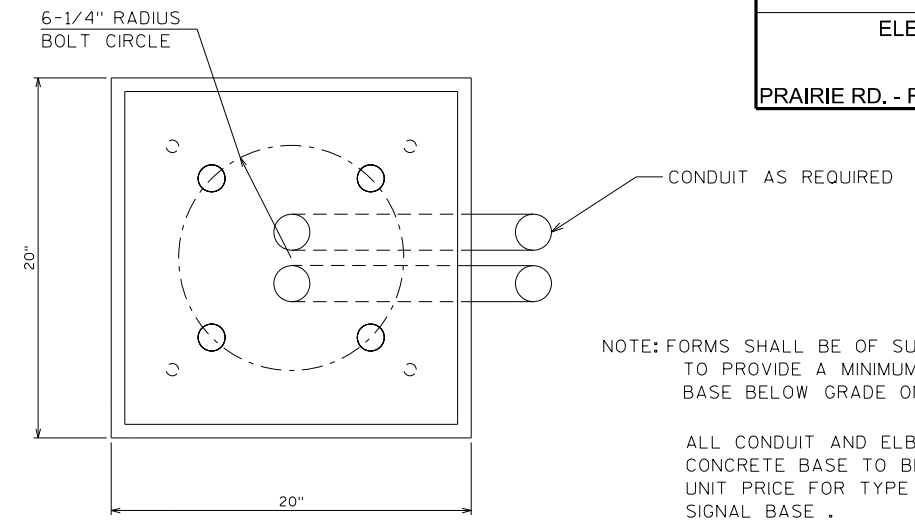
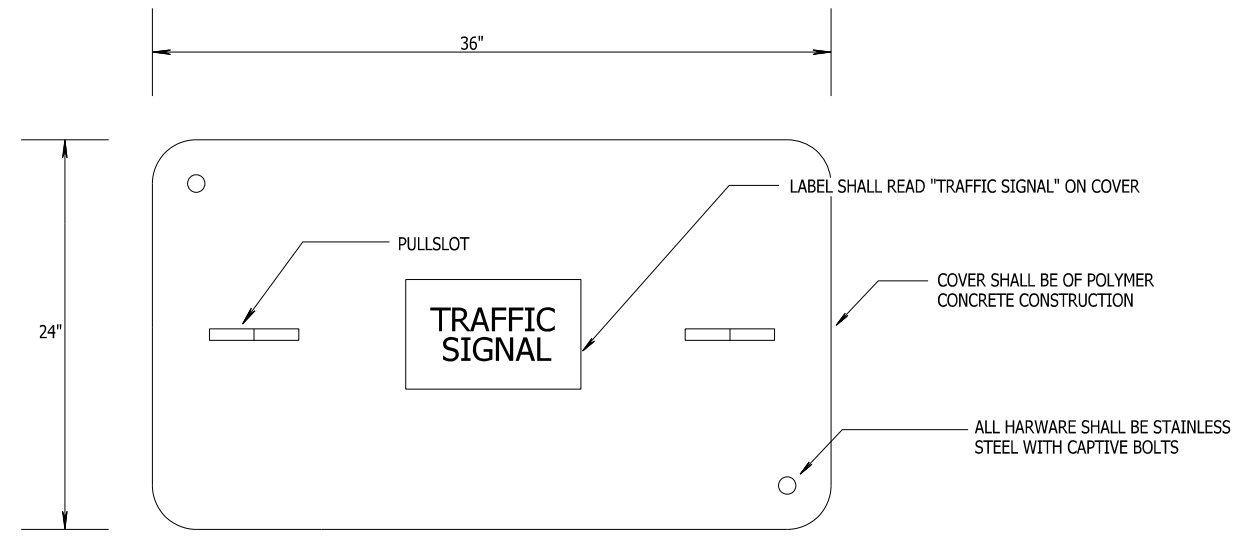
DETAIL: TYPE I HANDHOLE
NTS

PLOT SCALE:

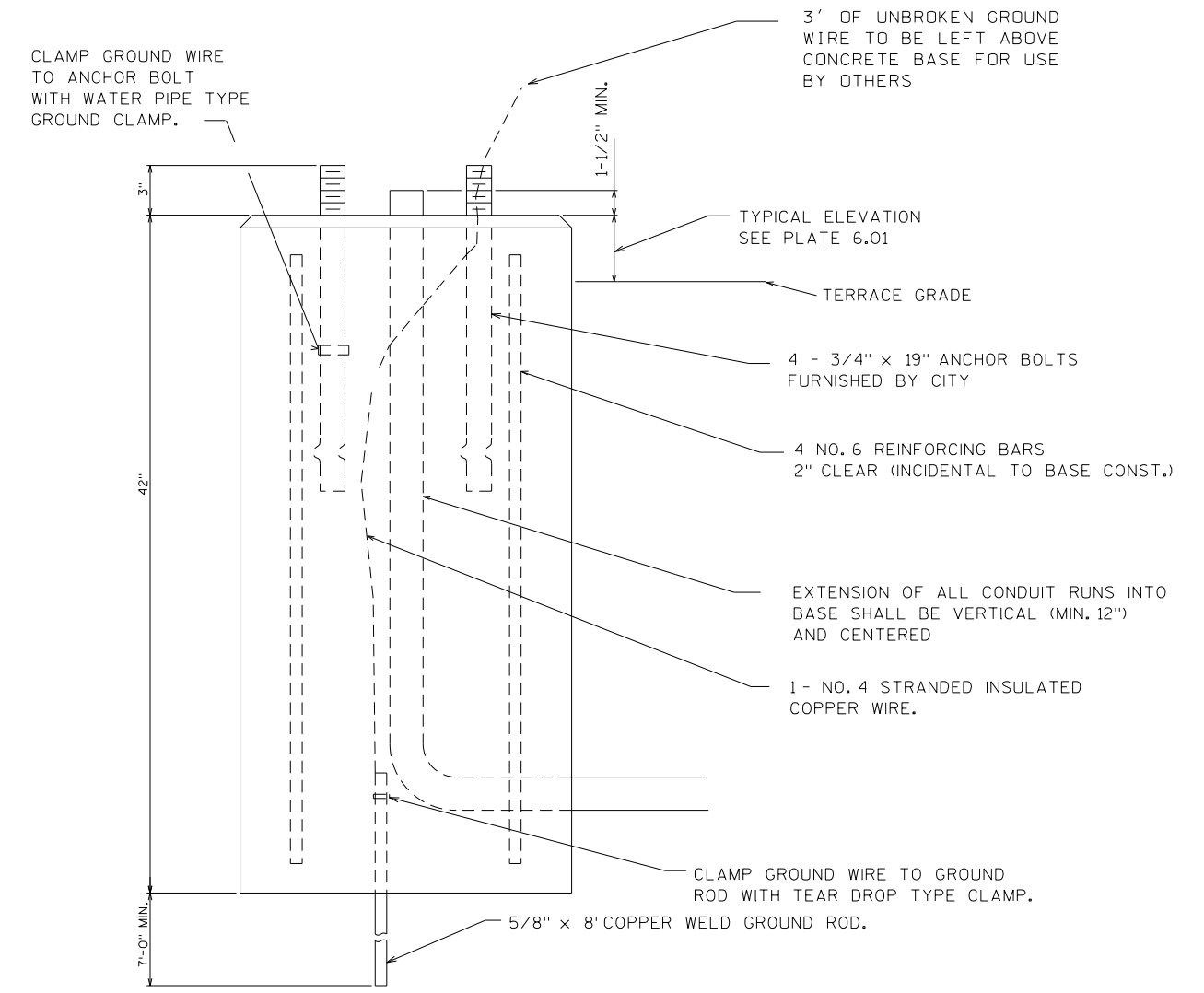
 PLOT NAME:

 REV. DATE:

 ORIGINATOR: CITY OF MADISON, TRAFFIC ENG. DIV.



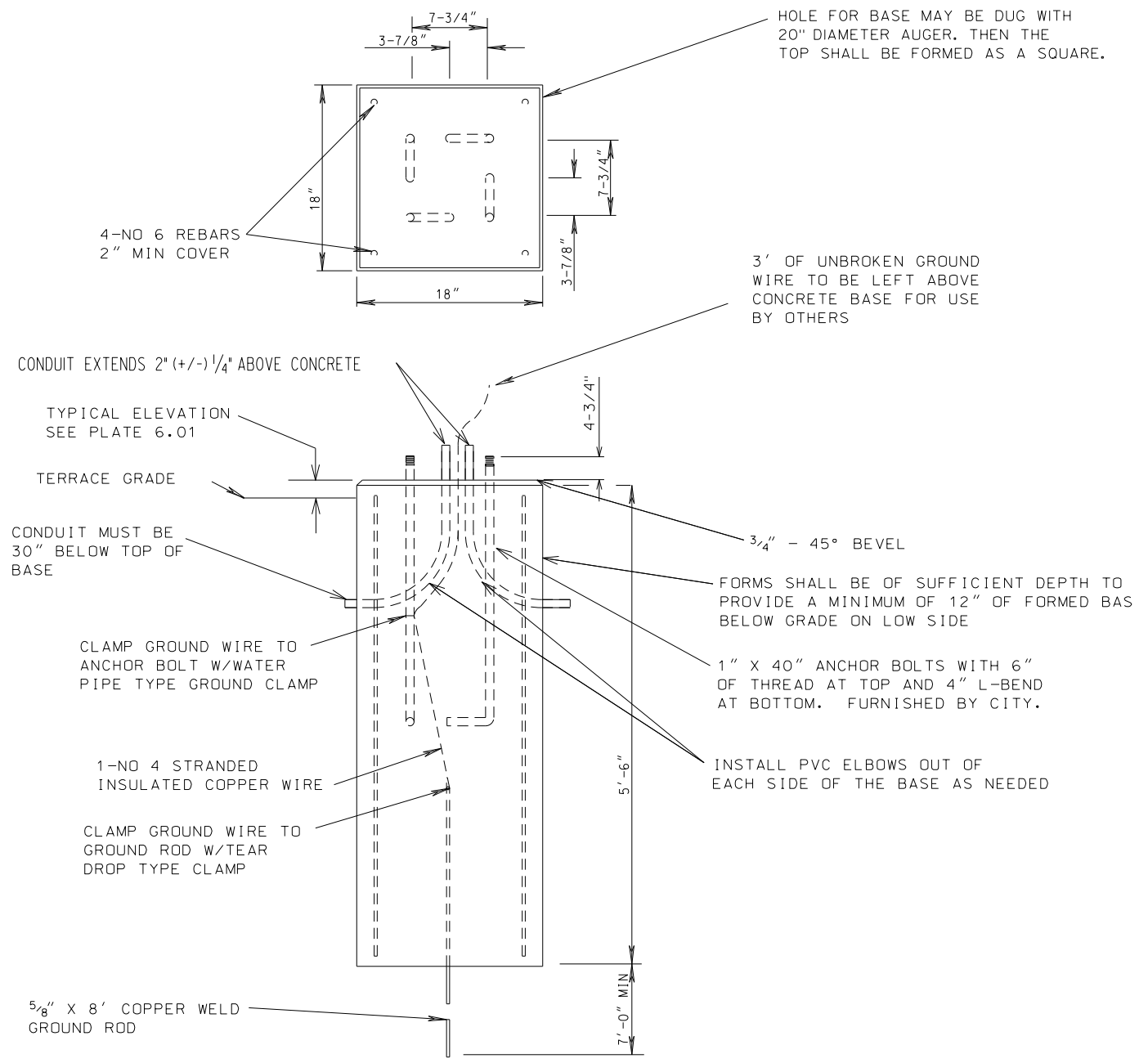
DETAIL: TYPE V HANDHOLE
SCALE: NTS



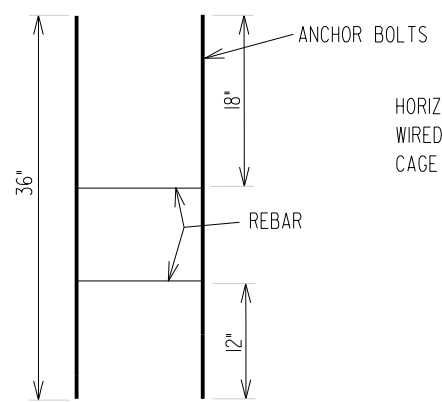
DETAIL: TYPE V HANDHOLE
SCALE: NTS

PLOT SCALE:
PLOT NAME:
REV. DATE:
ORIGINATOR: CITY OF MADISON, TRAFFIC ENG. DIV.

PLOT SCALE:
 PLOT NAME:
 REV. DATE:
 ORIGINATOR: CITY OF MADISON, TRAFFIC ENG. DIV.

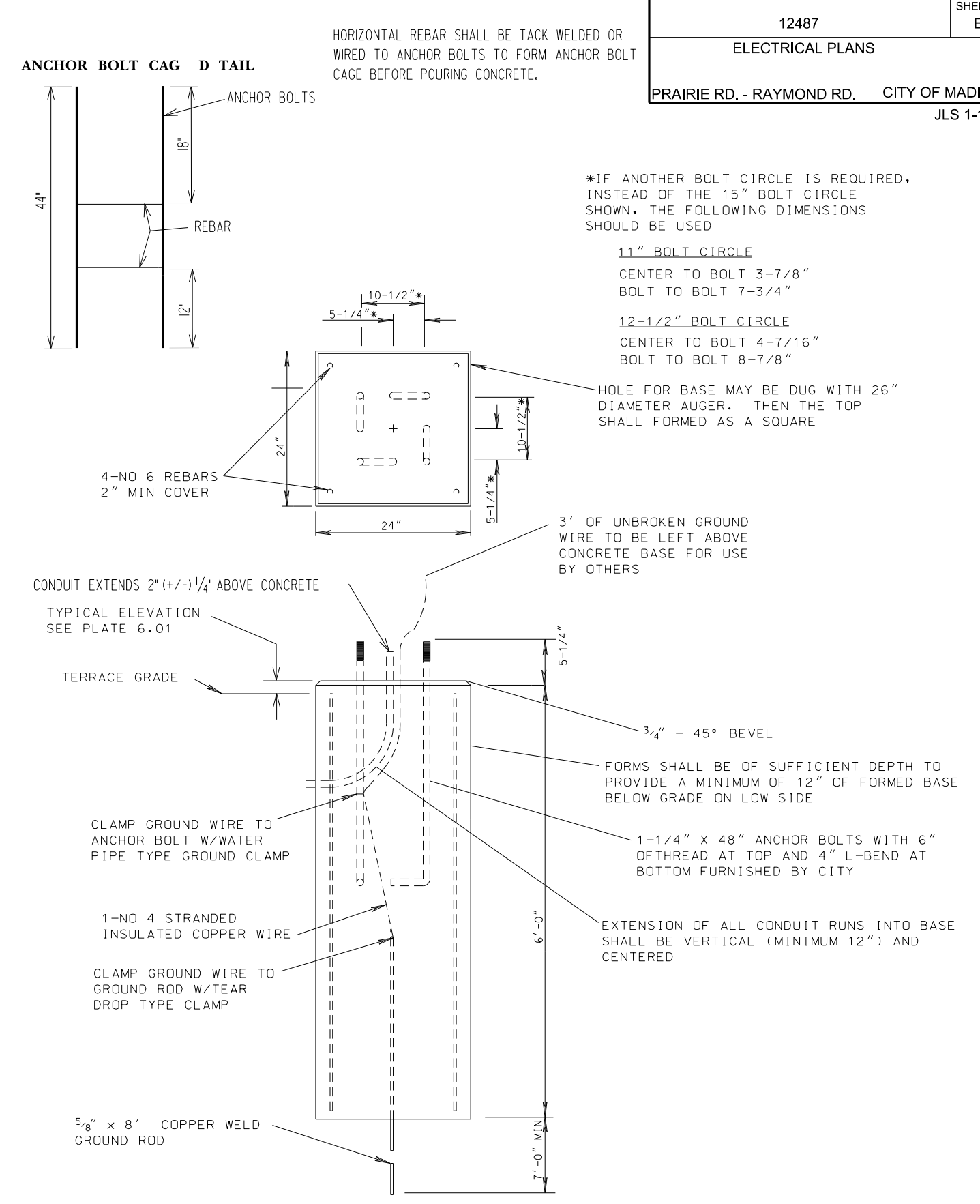


ANCHOR BOLT CAG D TAIL



HORIZONTAL REBAR SHALL BE TACK WELDED OR WIRED TO ANCHOR BOLTS TO FORM ANCHOR BOLT CAGE BEFORE POURING CONCRETE.

DETAIL: LB-3 BASE
SCALE: NTS



*IF ANOTHER BOLT CIRCLE IS REQUIRED, INSTEAD OF THE 15" BOLT CIRCLE SHOWN, THE FOLLOWING DIMENSIONS SHOULD BE USED

- 11" BOLT CIRCLE
CENTER TO BOLT 3-7/8"
BOLT TO BOLT 7-3/4"
- 12-1/2" BOLT CIRCLE
CENTER TO BOLT 4-7/16"
BOLT TO BOLT 8-7/8"

DETAIL: LB-8
SCALE: NTS

ELECTRICAL HANDHOLES (12487)

12487	SHEET NO. E-10
ELECTRICAL MISC. QUANTITIES	
PRAIRIE RD. - RAYMOND RD. CITY OF MADISON	
JLS 1-24-20	

CATEGORY DESCRIPTION	60427 REMOVE ELECTRICAL HANDHOLE EACH	60702 CONSTRUCT ELECTRICAL HANDHOLE TYPE I EACH	60704 CONSTRUCT ELECTRICAL HANDHOLE TYPE III EACH	60706 CONSTRUCT ELECTRICAL HANDHOLE TYPE V EACH	COMMENTS
HH1	-	-	-	1	
HH2	-	-	-	1	
HH3	1	-	-	-	
HH4	-	1	-	-	
HH5	-	1	-	-	
HH6	-	1	-	-	
HH7	-	1	-	-	
HH8	-	1	-	-	
HH9	-	-	-	-	MAINTAIN EXISTING
HH10	-	-	1	-	
HH11	-	-	1	-	
HH12	-	1	-	-	
HH13	-	1	-	-	
HH14	-	1	-	-	
HH15	-	-	1	-	
HH16	-	-	1	-	
PROJECT 12487 TOTALS	1	8	2	2	

TRAFFIC SIGNAL BASES (12487)

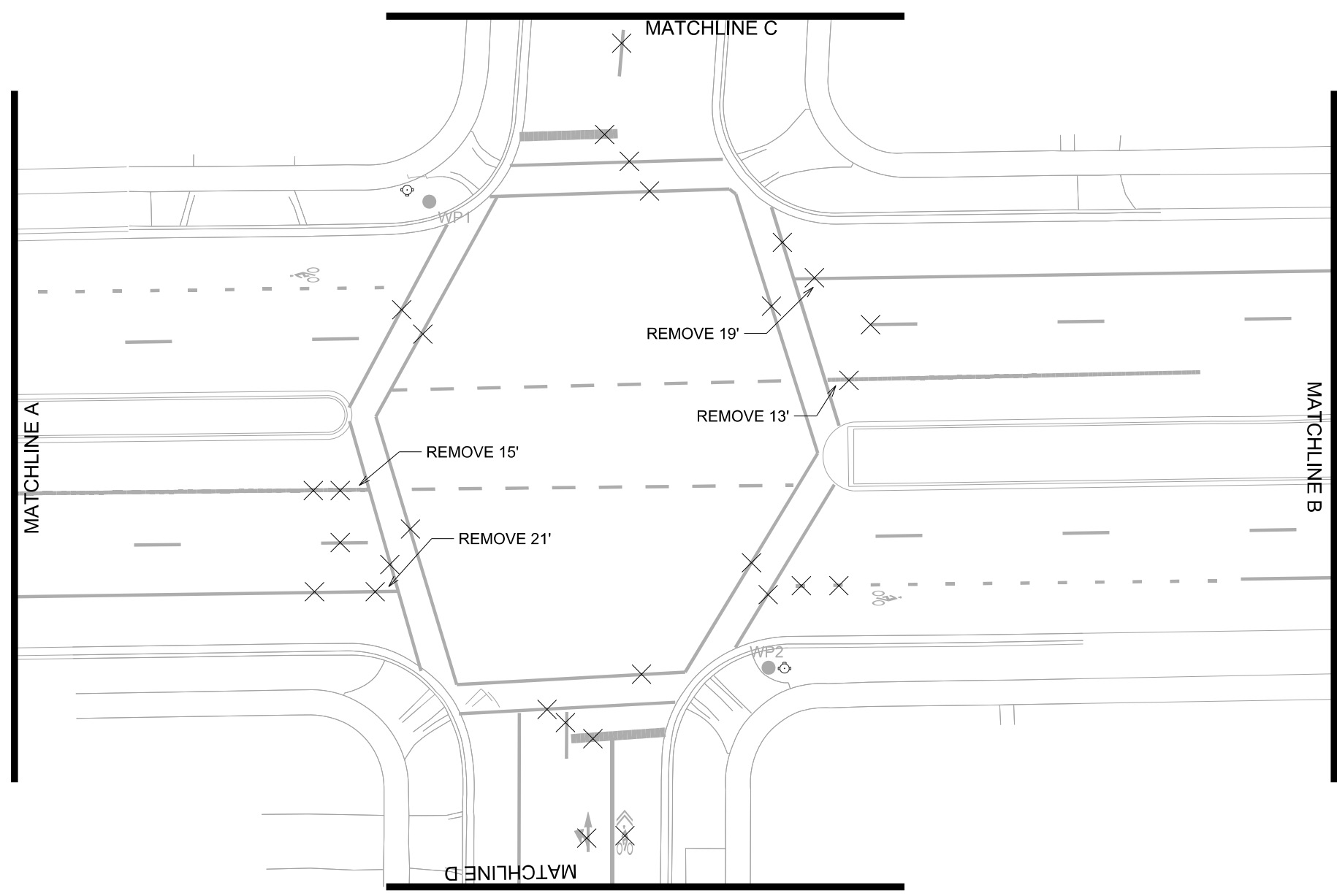
DESCRIPTION	60413 CONCRETE BASE TYPE P EACH	60411 CONCRETE BASE TYPE G EACH	60403 CONCRETE BASE TYPE LB-3 EACH	60407 CONCRETE BASE TYPE LB-8 EACH	60409 CONSTRUCTION OFFSET BASE EACH	COMMENTS
TC1	1	-	-	-	-	
TS1	-	-	-	1	-	
SL10027	-	-	-	1	-	
TS2	-	1	-	-	-	
TS3	-	1	-	-	-	
SL10028	-	-	1	-	-	
TS4	-	-	-	1	-	
SL10029	-	-	-	1	-	
TS5	-	1	-	-	-	
TS6	-	1	-	-	-	
SL10030	-	-	1	-	-	
UNDISTRIBUTED	-	-	-	-	1	UNDISTRIBUTED
PROJECT 12487 TOTALS	1	4	2	4	1	

PLOT SCALE:

PLOT NAME:

REV. DATE:

ORIGINATOR: CITY OF MADISON, TRAFFIC ENG. DIV.



PAVEMENT MARKING REMOVAL NOTES:

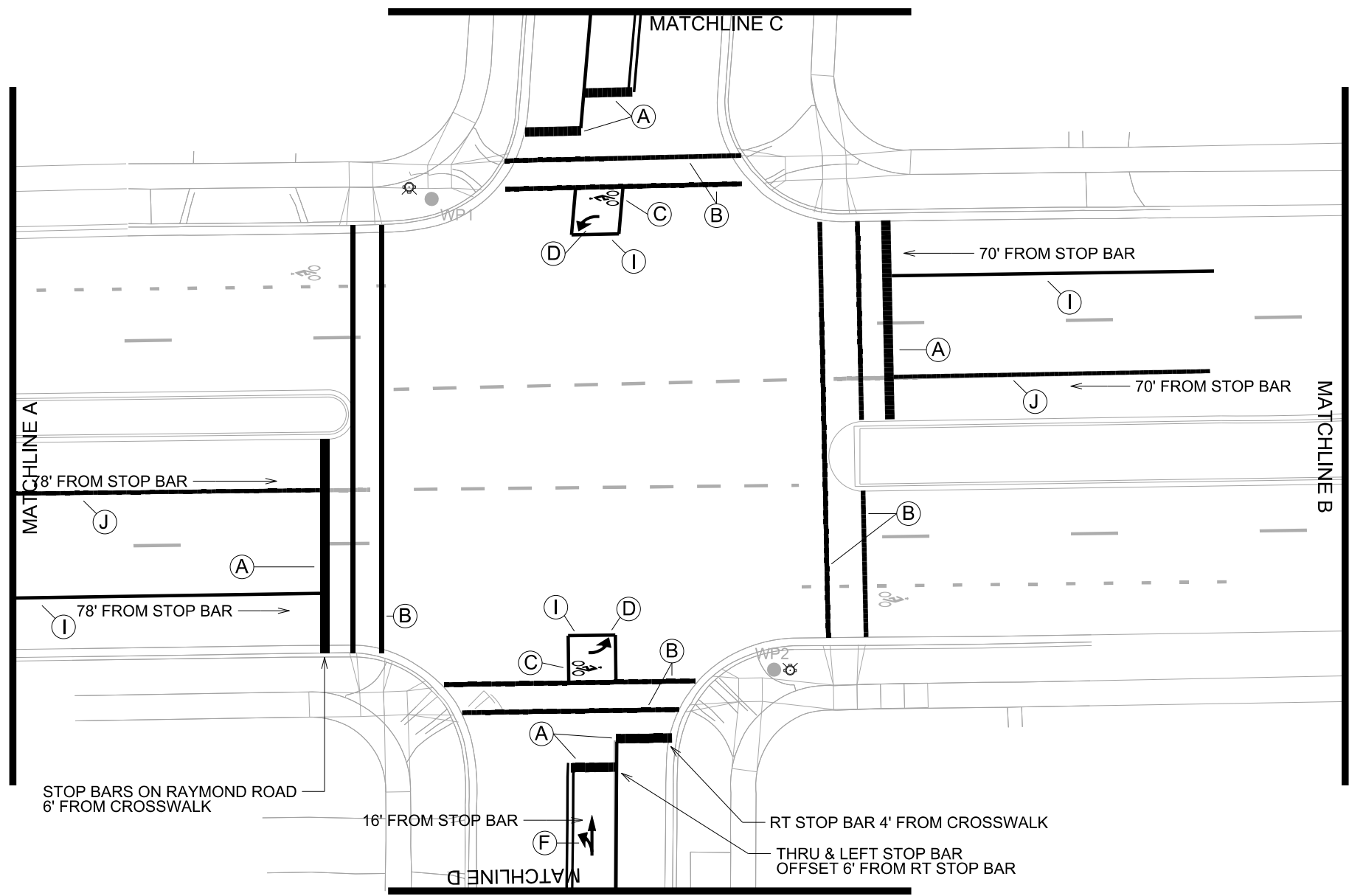
1. CONTACT JERRY SCHIPPA, TRAFFIC ENGINEERING, JSCHIPPA@CITYOFMADISON.COM, (608) 267-1969 AT LEAST 24 HOURS PRIOR TO REMOVING PAVEMENT MARKINGS FOR FIELD CHECK/MARKINGS.

PLOT SCALE:

 PLOT NAME:

 REV. DATE:

 ORIGINATOR: CITY OF MADISON, TRAFFIC ENG. DIV.



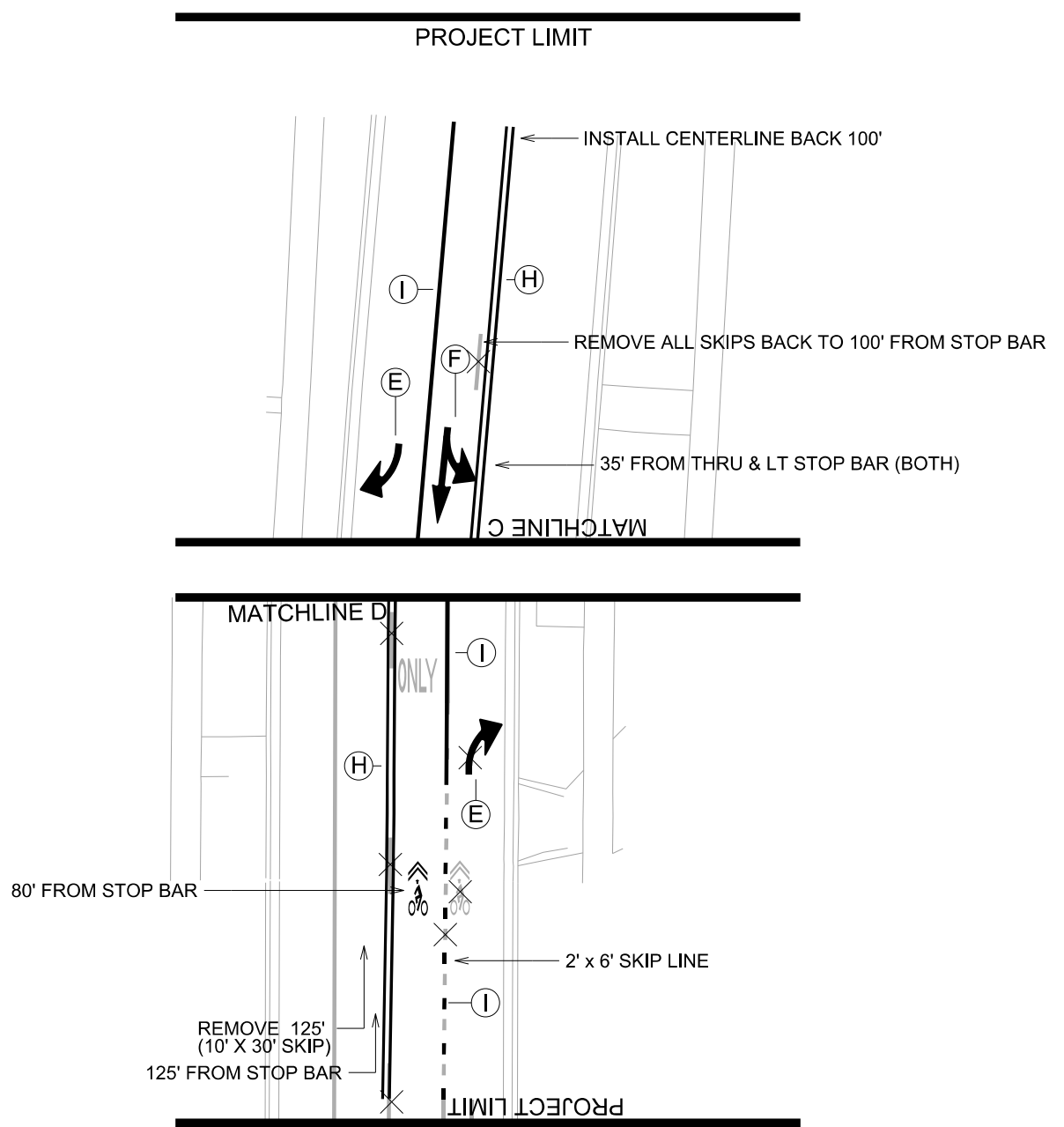
PAVEMENT MARKING REMOVAL NOTES:

1. CONTACT: JERRY SCHIPPA, TRAFFIC ENGINEERING, JSCHIPPA@CITYOFMADISON.COM, (608) 267-1969
2. STOP BARS SHALL BE PLACED 6-FT BACK FROM CROSSWALK ON ALL APPROACHES WITH THE EXCEPTION OF THE NB AND SB THRU & LEFT TURN LANES, WHICH SHALL BE MARKED 12-FT BACK FROM THE CROSSWALK.

LEGEND

- (A) PAVEMENT MARKING EPOXY, STOP LINE, 24-INCH
- (B) PAVEMENT MARKING EPOXY, CROSSWALK, 12-INCH
- (C) PAVEMENT MARKING EPOXY, SYMBOL, BIKE LANE
- (D) PAVEMENT MARKING EPOXY, SYMBOL, BIKE LEFT ARROW
- (E) PAVEMENT MARKING EPOXY, SYMBOL, RIGHT ARROW
- (F) PAVEMENT MARKING EPOXY, SYMBOL, STRAIGHT & LEFT ARROW
- (G) PAVEMENT MARKING EPOXY, WORD, ONLY
- (H) PAVEMENT MARKING EPOXY, DOUBLE LINE, 4-INCH, YELLOW
- (I) PAVEMENT MARKING EPOXY, LINE, 6-INCH, WHITE
- (J) PAVEMENT MARKING EPOXY, LINE, 8-INCH, WHITE

PLOT SCALE:
 PLOT NAME:
 REV. DATE:
 ORIGINATOR: CITY OF MADISON, TRAFFIC ENG. DIV.



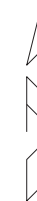
PAVEMENT MARKING REMOVAL NOTES:

1. CONTACT: JERRY SCHIPPA, TRAFFIC ENGINEERING, JSCHIPPA@CITYOFMADISON.COM, (608) 267-1969
2. STOP BARS SHALL BE PLACED 6-FT BACK FROM CROSSWALK ON ALL APPROACHES WITH THE EXCEPTION OF THE NB AND SB THRU & LEFT TURN LANES, WHICH SHALL BE MARKED 12-FT BACK FROM THE CROSSWALK.

LEGEND	
(A)	PAVEMENT MARKING EPOXY, STOP LINE, 24-INCH
(B)	PAVEMENT MARKING EPOXY, CROSSWALK, 12-INCH
(C)	PAVEMENT MARKING EPOXY, SYMBOL, BIKE LANE
(D)	PAVEMENT MARKING EPOXY, SYMBOL, BIKE LEFT ARROW
(E)	PAVEMENT MARKING EPOXY, SYMBOL, RIGHT ARROW
(F)	PAVEMENT MARKING EPOXY, SYMBOL, STRAIGHT & LEFT ARROW
(G)	PAVEMENT MARKING EPOXY, WORD, ONLY
(H)	PAVEMENT MARKING EPOXY, DOUBLE LINE, 4-INCH, YELLOW
(I)	PAVEMENT MARKING EPOXY, LINE, 6-INCH, WHITE
(J)	PAVEMENT MARKING EPOXY, LINE, 8-INCH, WHITE

PLOT SCALE:
PLOT NAME:
REV. DATE:
ORIGINATOR: CITY OF MADISON, TRAFFIC ENG. DIV.

REVISION 05-27-2020 AJZ
 - Revise NW curb ramps
 - Add more design information to NE & SW curb ramp
 - Revise SE corner sidewalk replacement



PRAIRIE ROAD

0708-364-0308-3
 KONG, TING J
 DAOCO T NGUYEN
 1910 Prairie Rd

N=467285.07
 E=793158.11
 1028.86 BW

N=467285.70
 E=793141.47
 1028.23 BW

1028.31

R10

R5

TYPE 'X'

HYDRANT TO BE RELOCATED BY OTHERS

0708-364-1020-2
 JACKSON, NANCY R
 6126 Raymond Rd

N=467287.15
 E=793246.73
 1030.65

RAYMOND ROAD

PROTECT EX PVMT

N=467171.42
 E=793229.06
 1028.63 BW

N=467168.42
 E=793148.96
 1027.86 BW

1027.96

1027.96 BW
 (HI PT)

N=467169.81
 E=793249.18
 1029.50 BW

1029.40 BW

0608-011-0301-5
 HALADA, ANDREW A
 & DENISE E HALADA
 6121 Raymond Rd

NOTES:

1. CONTRACTOR SHALL REMOVE CONCRETE FROM EXISTING RAMPS AND EXISTING RAMP APPROACHES WITHIN REPLACEMENT LIMITS AS SHOWN ON PLANS.

2. ASPHALT MATERIAL FOR CURB FRONT FILL SHALL BE USED ADJACENT TO ALL CURB REPLACEMENT LOCATIONS, UNLESS NOTED TO PROTECT EX ASPHALT PAVEMENT

PLOT SCALE: _____

PLOT NAME: _____

REV. DATE: _____

ORIGINATOR: CITY OF MADISON, STREETS DIVISION