

Madison, Wisconsin

# CITY OF MADISON

## CITY ENGINEERING DIVISION

### DEPARTMENT OF PUBLIC WORKS

# PLAN OF PROPOSED IMPROVEMENT

## GREENTREE HILLS LANDFILL

## WEST HEADER REPLACEMENT

PUBLIC IMPROVEMENT PROJECT  
APPROVED

APRIL 21, 2021

BY THE BOARD OF PUBLIC  
WORKS OF MADISON, WISCONSIN

PUBLIC IMPROVEMENT DESIGN  
APPROVED BY:

*Greg Fries*

06/07/21

City Engineer

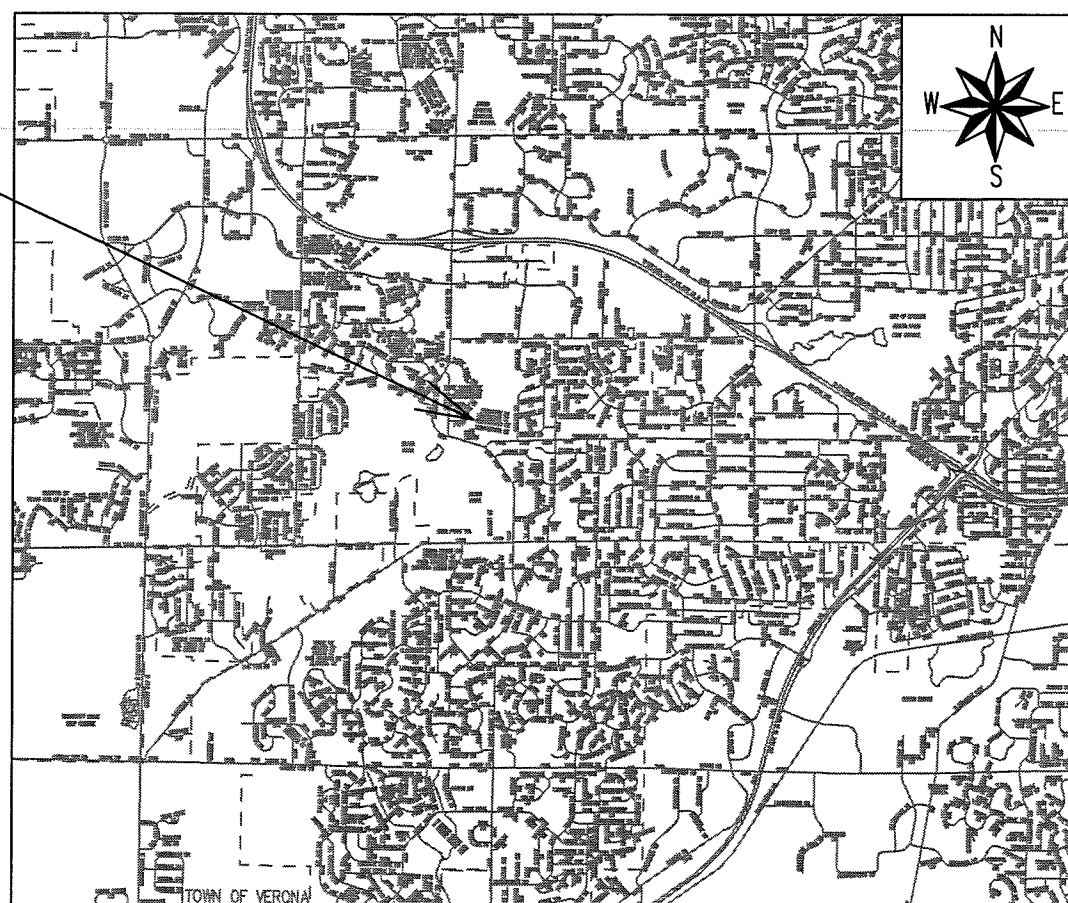
Date

#### INDEX OF SHEETS

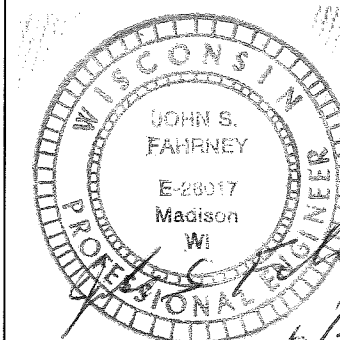
SHEET NO. 1	TITLE SHEET
SHEET NO. 2	PROJECT OVERVIEW
SHEET NO. D1-D5	DETAILS

CITY PROJECT NO. 13491  
CONTRACT NO. 9035

PROJECT  
LOCATION



LANDFILL GAS DESIGN  
APPROVED BY:

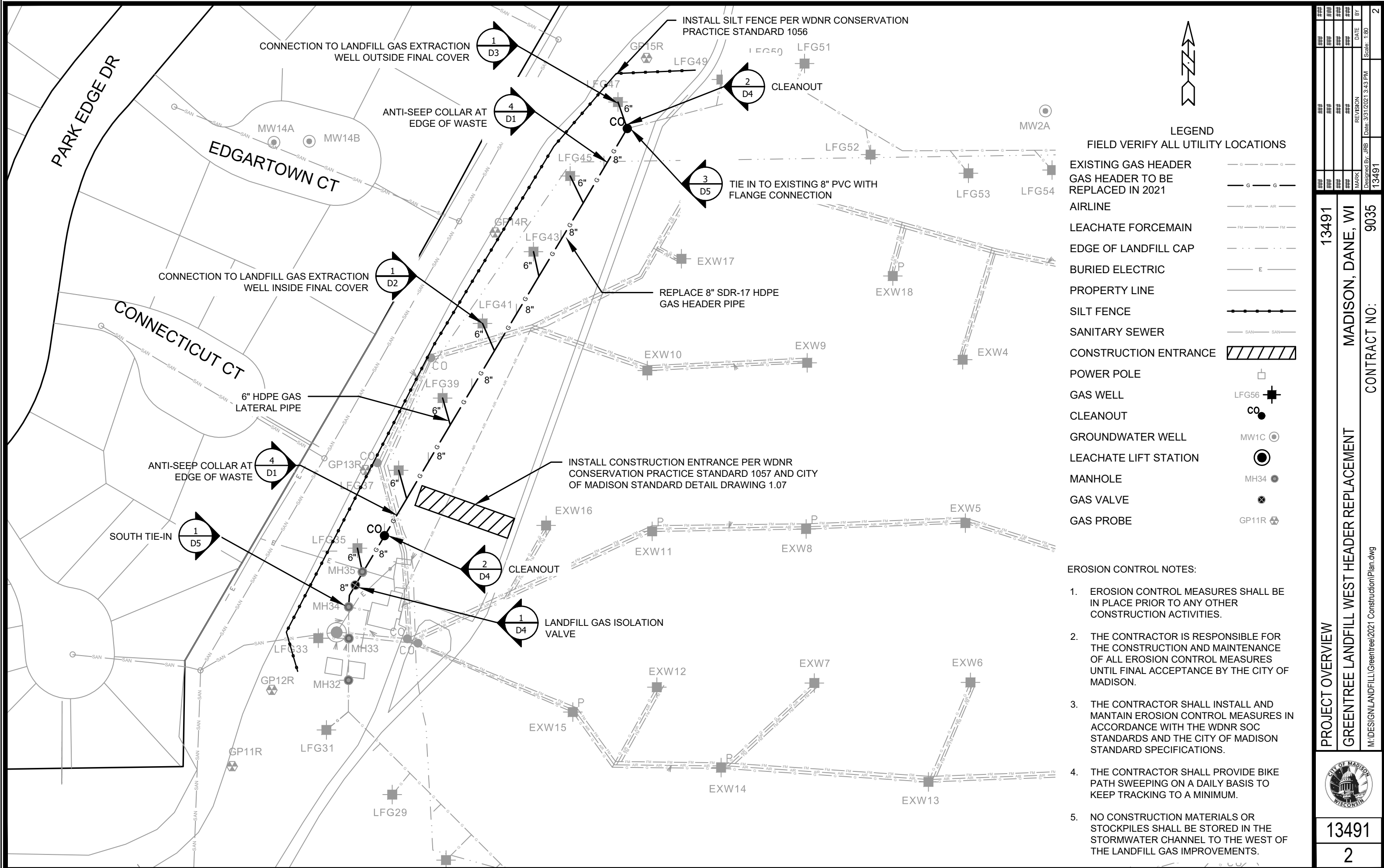


PLOT SCALE: 1:1\_XREF

PLOT NAME: ---

REV. DATE: 02/2021 12:59 PM

ORIGINATOR: CITY\_OF\_MADISON



**LEGEND**

FIELD VERIFY ALL UTILITY LOCATIONS

EXISTING GAS HEADER	---
GAS HEADER TO BE REPLACED IN 2021	---
AIRLINE	---
LEACHATE FORCEMAIN	---
EDGE OF LANDFILL CAP	---
BURIED ELECTRIC	---
PROPERTY LINE	---
SILT FENCE	---
SANITARY SEWER	---
CONSTRUCTION ENTRANCE	▨
POWER POLE	□
GAS WELL	LFG56
CLEANOUT	CO
GROUNDWATER WELL	MW1C
LEACHATE LIFT STATION	●
MANHOLE	MH34
GAS VALVE	⊗
GAS PROBE	GP11R

- EROSION CONTROL NOTES:**
1. EROSION CONTROL MEASURES SHALL BE IN PLACE PRIOR TO ANY OTHER CONSTRUCTION ACTIVITIES.
  2. THE CONTRACTOR IS RESPONSIBLE FOR THE CONSTRUCTION AND MAINTENANCE OF ALL EROSION CONTROL MEASURES UNTIL FINAL ACCEPTANCE BY THE CITY OF MADISON.
  3. THE CONTRACTOR SHALL INSTALL AND MANTAIN EROSION CONTROL MEASURES IN ACCORDANCE WITH THE WDNR SOC STANDARDS AND THE CITY OF MADISON STANDARD SPECIFICATIONS.
  4. THE CONTRACTOR SHALL PROVIDE BIKE PATH SWEEPING ON A DAILY BASIS TO KEEP TRACKING TO A MINIMUM.
  5. NO CONSTRUCTION MATERIALS OR STOCKPILES SHALL BE STORED IN THE STORMWATER CHANNEL TO THE WEST OF THE LANDFILL GAS IMPROVEMENTS.

DESIGNED BY: JRB	DATE: 1/30
REVISION	DATE
MARK	BY
13491	2

PROJECT OVERVIEW


13491

MADISON, DANE, WI

GREENTREE LANDFILL WEST HEADER REPLACEMENT

CONTRACT NO.: 9035

M:\DESIGN\LANDFILL\Greentree\2021 Construction\Plan.dwg



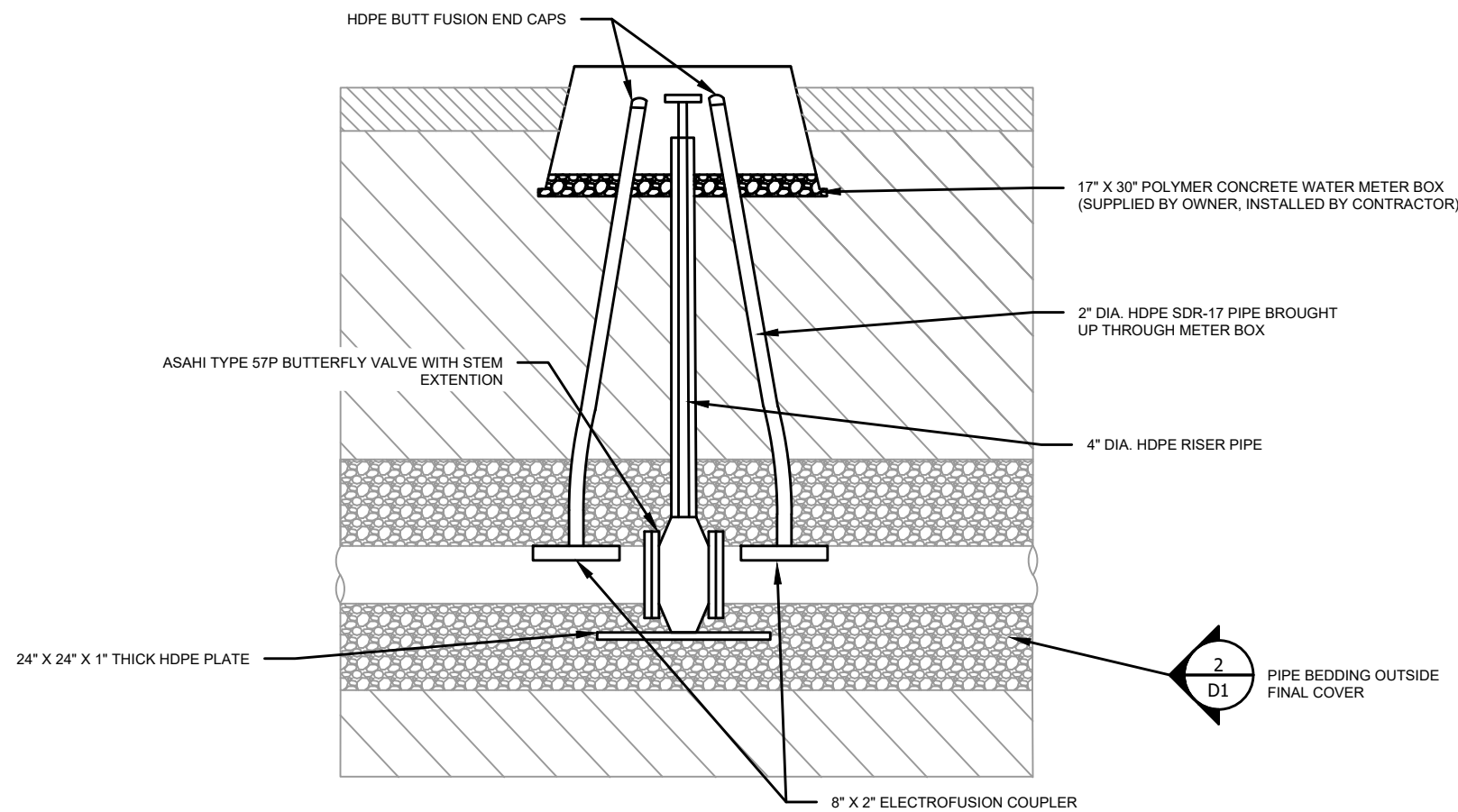
13491

2

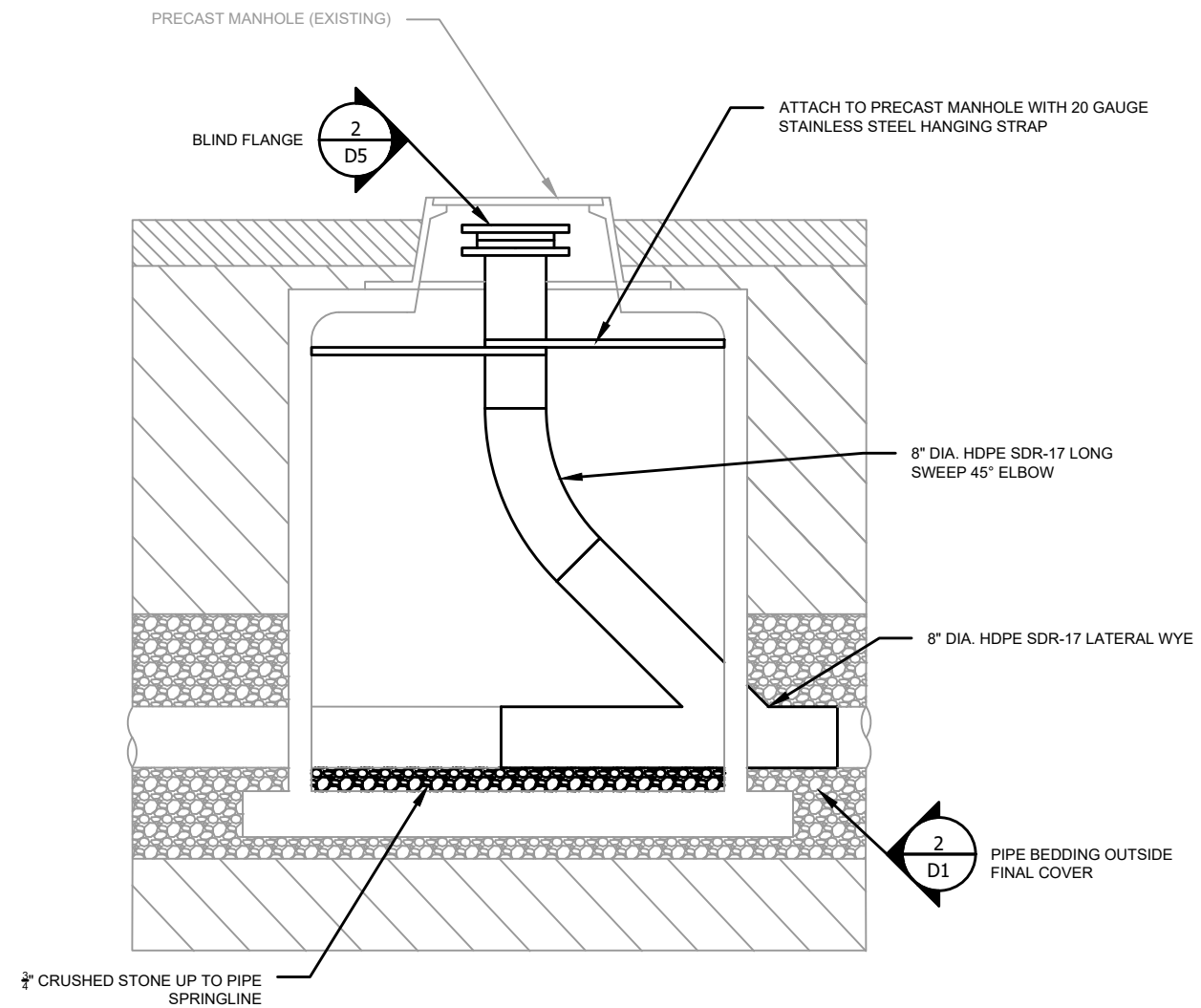








**1** LANDFILL GAS ISOLATION VALVE  
Scale: 1" = 2'



**2** CLEANOUT  
Scale: 1" = 2'

MARK	REVISION	DATE	BY
###	###	###	###
###	###	###	###
###	###	###	###

13491  
MADISON, DANE, WI  
9035

CONTRACT NO:  
13491  
MADISON, DANE, WI  
9035



13491  
D4

MARK	REVISION	DATE	BY
###	###	###	###
###	###	###	###
###	###	###	###

13491  
MADISON, DANE, WI  
9035

CONTRACT NO:  
13491  
MADISON, DANE, WI  
9035



13491  
D4

