

- LEGEND**
- ⊗ TREE REMOVAL
 - XXD CURB & GUTTER XX-INCH TYPE D
 - XXDS CURB & GUTTER XX-INCH TYPE D SPECIAL
 - X CURB RAMP SPECIAL TYPE 'X' (SEE DETAIL)
 - //// SAWING PAVEMENT

CITY STREET RECONSTRUCTION BY OTHERS

BEGIN CONSTRUCTION STA 7+25

CURVE 'CK'1
 PI=7'CK'+10.27
 X=832599.61
 Y=493407.61
 DELTA= 32°32'49.74" Right
 D= 76°23'39.74"
 T=21.89
 L=42.60
 R=75.00
 PC=6'CK'+88.37
 PT=7'CK'+30.98
 BK: N38°25'05.55"W
 AH: N5°52'15.81"W

CURVE 'CK'2
 PI=7'CK'+89.05
 X=832591.43
 Y=493487.16
 DELTA= 34°02'04.98" Left
 D= 57°17'44.81"
 T=30.61
 L=59.40
 R=100.00
 PC=7'CK'+58.44
 PT=8'CK'+17.84
 BK: N5°52'15.81"W
 AH: N39°54'20.79"W

CURVE 'CK'3
 PI=9'CK'+02.74
 X=832517.33
 Y=493575.76
 DELTA= 20°11'47.43" Right
 D= 57°17'44.81"
 T=17.81
 L=35.25
 R=100.00
 PC=8'CK'+84.93
 PT=9'CK'+20.18
 BK: N39°54'20.79"W
 AH: N19°42'33.36"W

CURVE 'O'1
 DELTA= 282°50'22.24" Left
 D= 159°09'17".80
 L=177.71
 R=36.00
 PC=10'0'+35.79
 PT= 12'0'+13.50
 BK: S 66°26'06.96" W
 AH: N 36°24'15.28" W

CURVE 'O'2
 PI=13'0'+32.97
 X=832542.31
 Y=493608.94
 DELTA= -8°20'12.87" Left
 D= 57°17'44.81"
 T=7.29
 L=14.55
 R=100.00
 PC=13'0'+25.68
 PT=13'0'+40.23
 BK: N 36°24'15.28" W
 AH: N 44°44'28.15" W

CURVE 'P'1
 PI=7'P'+19.07
 X=832681.98
 Y=493391.11
 DELTA= 24°28'19.99" Left
 D= 88°08'50.47"
 T=14.10
 L=27.76
 R=65.00
 PC=7'P'+04.97
 PRC=7'P'+32.73
 BK: N23°06'22.90"W
 AH: N47°34'42.89"W

CURVE 'P'2
 PI=7'P'+54.00
 X=832655.87
 Y=493414.97
 DELTA= 24°00'49.85" Right
 D= 57°17'44.81"
 T=21.27
 L=41.91
 R=100.00
 PC=7'P'+32.73
 PT=7'P'+74.65
 BK: N47°34'42.89"W
 AH: N23°33'53.04"W

CURVE 'P'3
 PI=9'P'+00.00
 X=832597.25
 Y=493549.37
 DELTA= 2°37'56.09" Left
 BK: N23°33'53.04"W
 AH: N26°11'49.13"W

CURVE 'P'4
 PI=9'P'+81.46
 X=832561.29
 Y=493622.46
 DELTA= 18°32'39.01" Left
 D= 114°35'29.61"
 T=8.16
 L=16.18
 R=50.00
 PC=9'P'+73.30
 PT=9'P'+89.48
 BK: N26°11'49.13"W
 AH: N44°44'28.14"W

POINT	STATION	OFFSET	NOTES
BC415	366+18.70	R104.20	
PT416	366+05.70	R104.12	90 DEGREE BEND
PT417	366+05.86	R76.12	90 DEGREE BEND
EC418	366+18.86	R76.20	

CURVE 'R'1
 PI=10'R'+29.67
 X=832389.82
 Y=493708.57
 DELTA= 42°18'10.39" Right
 D=114°35'29.61"
 T=19.34
 L=36.92
 R=50.00
 PC=10'R'+10.33
 PT=10'R'+47.24
 BK: N44°55'22.93"W
 AH: N2°37'12.54"E

CURVE 'R'2
 PI=11'R'+67.96
 X=832383.42
 Y=493848.49
 DELTA= 43°10'09.29" Right
 D= 57°17'44.81"
 T=39.56
 L=75.34
 R=100.00
 PC=11'R'+28.40
 PRC=12'R'+03.75
 BK: N2°37'12.54"W
 AH: N40°32'56.75"E

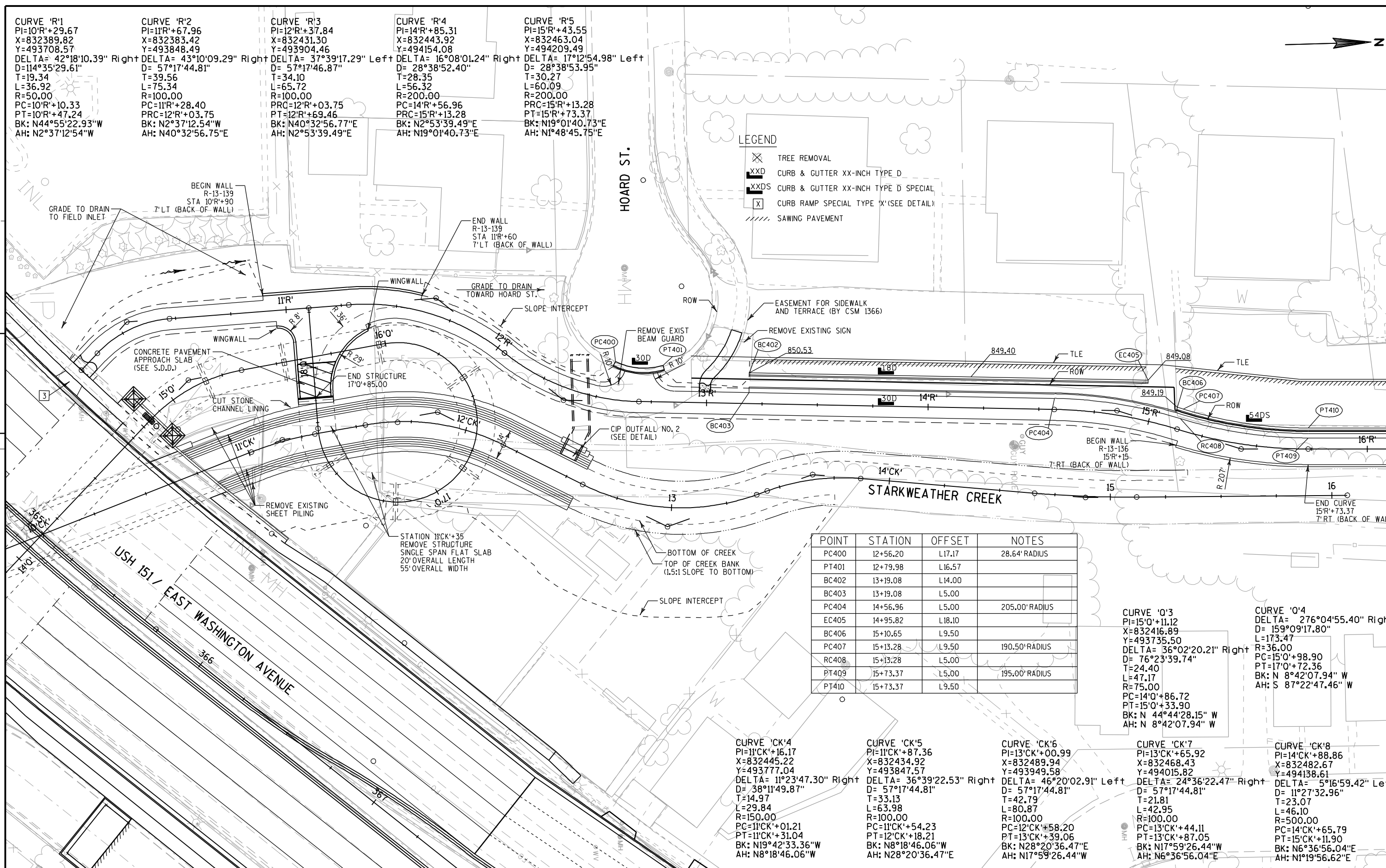
CURVE 'R'3
 PI=12'R'+37.84
 X=832431.30
 Y=493904.46
 DELTA= 37°39'17.29" Left
 D= 57°17'46.87"
 T=34.10
 L=65.72
 R=100.00
 PRC=12'R'+03.75
 PT=12'R'+69.46
 BK: N40°32'56.77"E
 AH: N2°53'39.49"E

CURVE 'R'4
 PI=14'R'+85.31
 X=832443.92
 Y=494154.08
 DELTA= 16°08'01.24" Right
 D= 28°38'52.40"
 T=28.35
 L=56.32
 R=200.00
 PC=14'R'+56.96
 PRC=15'R'+13.28
 BK: N2°53'39.49"E
 AH: N19°01'40.73"E

CURVE 'R'5
 PI=15'R'+43.55
 X=832463.04
 Y=494209.49
 DELTA= 17°12'54.98" Left
 D= 28°38'53.95"
 T=30.27
 L=60.09
 R=200.00
 PRC=15'R'+13.28
 PT=15'R'+73.37
 BK: N19°01'40.73"E
 AH: N1°48'45.75"E

LEGEND

- ✕ TREE REMOVAL
- XXD CURB & GUTTER XX-INCH TYPE D
- XXDS CURB & GUTTER XX-INCH TYPE D SPECIAL
- X CURB RAMP SPECIAL TYPE 'X'(SEE DETAIL)
- //// SAWING PAVEMENT



POINT	STATION	OFFSET	NOTES
PC400	12+56.20	L17.17	28.64' RADIUS
PT401	12+79.98	L16.57	
BC402	13+19.08	L14.00	
BC403	13+19.08	L5.00	
PC404	14+56.96	L5.00	205.00' RADIUS
EC405	14+95.82	L18.10	
BC406	15+10.65	L9.50	
PC407	15+13.28	L9.50	190.50' RADIUS
RC408	15+13.28	L5.00	
PT409	15+73.37	L5.00	195.00' RADIUS
PT410	15+73.37	L9.50	

CURVE 'O'3
 PI=15'O'+11.12
 X=832416.89
 Y=493735.50
 DELTA= 36°02'20.21" Right
 D= 76°23'39.74"
 T=24.40
 L=47.17
 R=75.00
 PC=14'O'+86.72
 PT=15'O'+33.90
 BK: N 44°44'28.15" W
 AH: N 8°42'07.94" W

CURVE 'O'4
 DELTA= 276°04'55.40" Right
 D= 159°09'17.80"
 L=173.47
 R=36.00
 PC=15'O'+98.90
 PT=17'O'+72.36
 BK: N 8°42'07.94" W
 AH: S 87°22'47.46" W

CURVE 'CK'4
 PI=11'CK'+16.17
 X=832445.22
 Y=493777.04
 DELTA= 11°23'47.30" Right
 D= 38°11'49.87"
 T=14.97
 L=29.84
 R=150.00
 PC=11'CK'+01.21
 PT=11'CK'+31.04
 BK: N19°42'33.36"W
 AH: N8°18'46.06"W

CURVE 'CK'5
 PI=11'CK'+87.36
 X=832434.92
 Y=493847.57
 DELTA= 36°39'22.53" Right
 D= 57°17'44.81"
 T=33.13
 L=63.98
 R=100.00
 PC=11'CK'+54.23
 PT=12'CK'+18.21
 BK: N8°18'46.06"W
 AH: N28°20'36.47"E

CURVE 'CK'6
 PI=13'CK'+00.99
 X=832489.94
 Y=493949.58
 DELTA= 46°20'02.91" Left
 D= 57°17'44.81"
 T=42.79
 L=80.87
 R=100.00
 PC=12'CK'+58.20
 PT=13'CK'+39.06
 BK: N28°20'36.47"E
 AH: N17°59'26.44"W

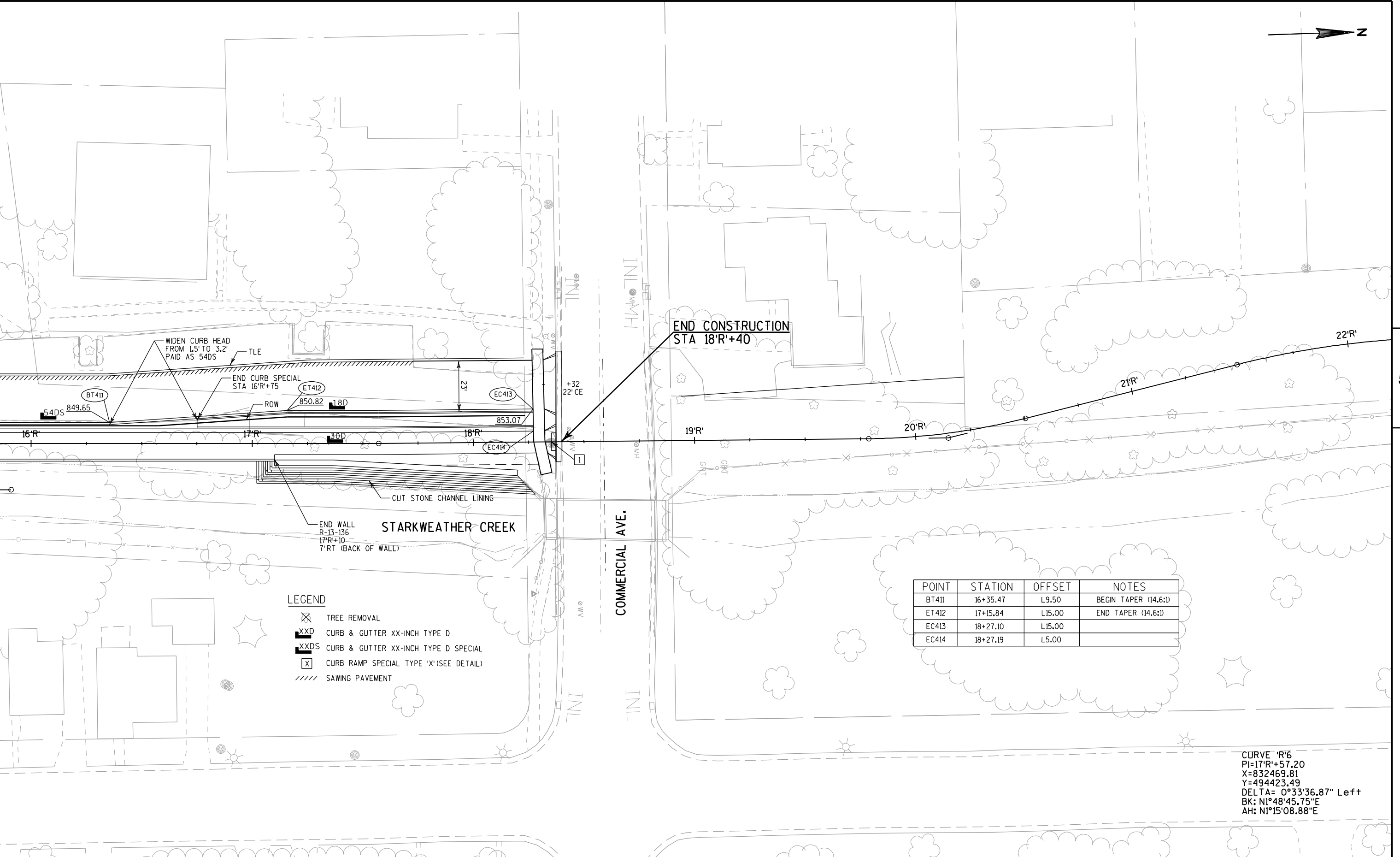
CURVE 'CK'7
 PI=13'CK'+65.92
 X=832468.43
 Y=494015.82
 DELTA= 24°36'22.47" Right
 D= 57°17'44.81"
 T=21.81
 L=42.95
 R=100.00
 PC=13'CK'+44.11
 PT=13'CK'+87.05
 BK: N17°59'26.44"W
 AH: N6°36'56.04"E

CURVE 'CK'8
 PI=14'CK'+88.86
 X=832482.67
 Y=494138.61
 DELTA= 5°16'59.42" Left
 D= 11°27'32.96"
 T=23.07
 L=46.10
 R=500.00
 PC=14'CK'+65.79
 PT=15'CK'+11.90
 BK: N6°36'56.04"E
 AH: N1°19'56.62"E



5

5



END CONSTRUCTION
STA 18'R'+40

LEGEND

- TREE REMOVAL
- CURB & GUTTER XX-INCH TYPE D
- CURB & GUTTER XX-INCH TYPE D SPECIAL
- CURB RAMP SPECIAL TYPE 'X' (SEE DETAIL)
- SAWING PAVEMENT

POINT	STATION	OFFSET	NOTES
BT411	16+35.47	L9.50	BEGIN TAPER (14.6:1)
ET412	17+15.84	L15.00	END TAPER (14.6:1)
EC413	18+27.10	L15.00	
EC414	18+27.19	L5.00	

CURVE 'R'6
 PI=17'R'+57.20
 X=832469.81
 Y=494423.49
 DELTA= 0°33'36.87" Left
 BK: N1°48'45.75"E
 AH: N1°15'08.88"E