



The Mid-Atlantic Green Highways Partnership (GHP) was formed to promote innovative streamlining and market-based approaches to meet transportation needs while promoting environmental stewardship so both are “better than before,” with an emphasis on sustainability!

GREEN HIGHWAYS CHARACTERISTICS

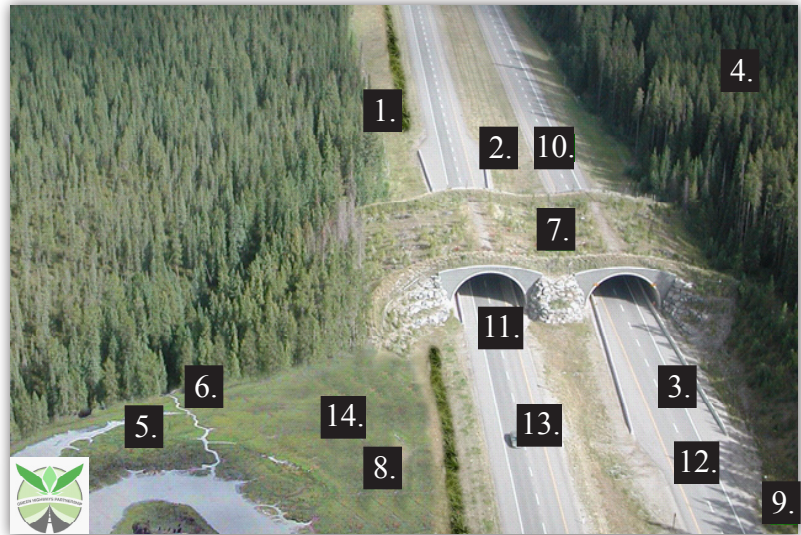
- Provides a net increase in environmental functions and values to the watershed.
- Goes beyond the minimum standards set forth by environmental law and regulations.
- Identifies and protects historical and cultural landmarks.
- Maps all resources in the area in order to identify, avoid, and protect critical resource areas.
- Uses innovative, natural methods to reduce imperviousness, and cleanse all run-off within the project area.
- Maximizes the use of existing transportation infrastructure, provides multi-modal transportation opportunities, and promotes ride-sharing/public transportation.
- Uses recycled materials to eliminate waste and reduce the energy required to build the highway.
- Links regional transportation plans with local land use through partnerships.
- Controls populations of invasive species and promotes the growth of native species.
- Incorporates post project monitoring to ensure environmental results.
- Protects the hydrology of wetlands and stream channels through restoration of natural drainage paths.
- Results in a suite of targeted environmental outcomes based upon local environmental needs.
- Reduces disruptions to ecological processes by promoting wildlife corridors and passages in areas identified through wildlife conservation plans.
- Encourages smart growth by integrating and guiding future growth and capacity building with ecological constraints.

Why was the GHP Formed?

First, the partners recognized the increased demand and expectations from the public for improved transportation systems and protection of our natural environment. As this demand increased, the players also found themselves in an increasingly complex environment. Things just aren't as simple as they once seemed to be. These factors, coupled with the increasing cost of doing business and ever shrinking resources, partnerships formed to encourage innovation, smart thinking, and good government to address our common goals. The GHP facilitates coordination and communication amongst these many entities and their varied interested early in the planning process to be most effective.

What Makes a Green Highway?

Under the GHP, green highways are not defined by a list of requirements. Green highways are defined by an effort to go “beyond compliance” and leave the project area “better than before” through community partnering, environmental stewardship, and transportation network improvements in safety and functionality. The Green Highways Partnership discusses characteristics of a green highway that differs from project to project, and location to location. To assist DOTs in translating these characteristics into practice, the GHP is developing innovative approaches, solutions and practices.



Environmental Technologies of a Green Highway

1. Bioretention, 2. Porous Pavement, 3. Environmentally Friendly Concrete, 4. Forest Buffers, 5. Stormwater Wetlands, 6. Stream Restoration, 7. Wildlife Crossings, 8. Soil Amendments, 9. Diesel Hook-ups, 10. 100 Year Pavements, 11. Use of Recycled/Reclaimed Materials, 12. Cool Pavements, 13. Alternative Bio-fuels, 14. Vegetated Buffer

## BETTER THAN BEFORE

The GHP goal is to promote market-driven innovation, stewardship, streamlining, and regulatory consistency & flexibility. GHP activities are rooted in stewardship, safety, and sustainability, with targeted activities to address its mission of “meeting transportation requirements and applying environmental stewardship so that both are better than before”. It is voluntary, - not regulatory, and continues to grow as a collaborative effort, through an extensive public-private partnering network of industry, trade, & environmental organizations, private sector (consultants & contractors), and government (local, state, & federal).

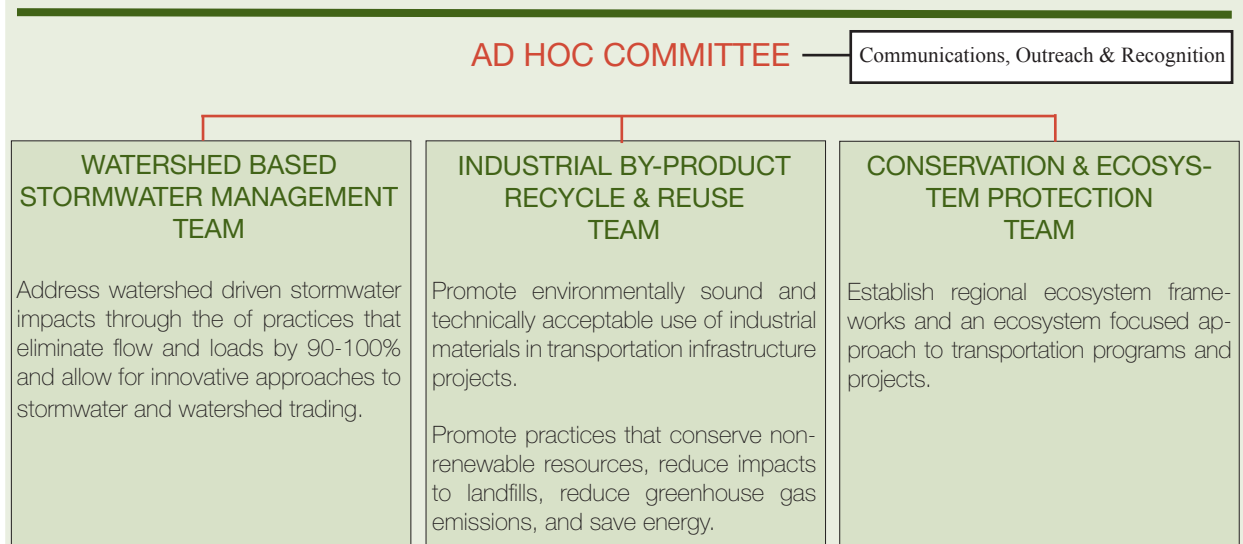
## GHP 10 GUIDING PRINCIPLES:

- Achieve goals through voluntary participation and public/private partnerships.
- Utilize market-based approaches and economic incentives.
- Provide communication and support network to avoid duplication and help streamline business practices and processes among those organizations supporting and enabling the “Green Highways” philosophy.
- Promote collaborative approach to conservation and integrated, watershed management that leverages efforts of all levels of government and the private sector to maximize benefits.
- Promote innovative stormwater protection.
- Promote use of recycled materials.
- Recognize and encourage existing environmental stewardship practices among transportation agencies by promoting them among a broader stakeholder universe.
- Remove barriers to achieving innovative and positive results.
- Leverage transportation and environmental resources (public and private) to multiply benefits and maximize results.
- Support and stimulate applied research and training to remove barriers identified by partners and stakeholders.

## PARTNERSHIP DEVELOPMENT

Integrates public/private interests among federal/state transportation and regulatory/resource agencies, contractors, materials industry, trade associations, academic institutions, and non-governmental organizations (NGOs) - over 100 organizations - to develop and advance Mid-Atlantic Green Highways goals. It also integrates goals of existing initiatives such as Context Sensitive Solutions, Environmental Stewardship, and Sustainability. Initially, Partnership Teams have been developed around the following themes:

### GHP Steering Committee and Teams



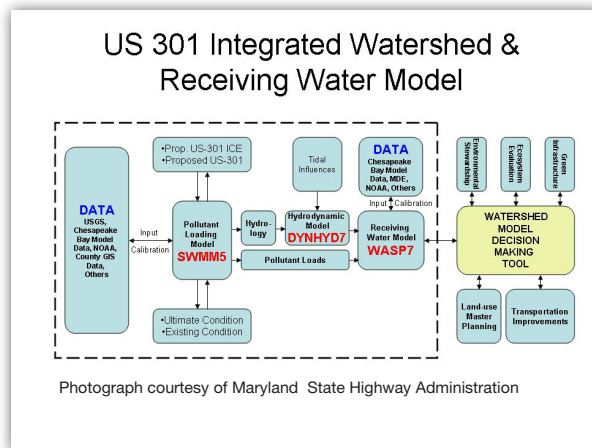
**Stewardship, Safety, Sustainability**

## OPPORTUNITIES THROUGH PILOT PROJECTS

An objective of the green highways partnership is to identify, promote and recognize “leading edge” pilot projects which demonstrate GHP goals to increase the visibility of creative solutions and inspire others to pursue green choices. Pilot projects strengthen partnerships, stimulate creative research, showcase effective solutions, and encourage market-based initiatives while demonstrating green highway characteristics.

Recent pilot projects in the Mid-Atlantic region include:

- Anacostia Watershed Protection;
- Villanova University Pervious Pavement Stormwater Studies;
- Prince George’s County Green Highways Program and Stormwater BMP Support Model;
- Watershed Resource Registry Pilot
- Delaware Department of Transportation NPDES permit supporting GHP principles

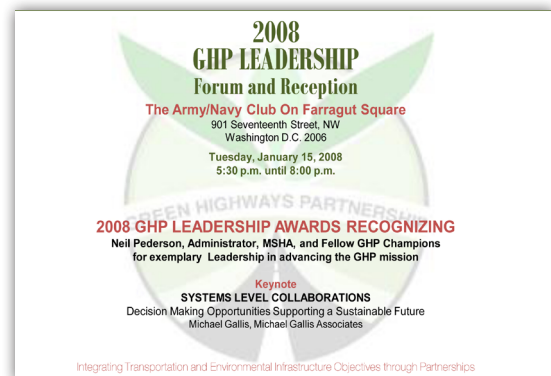


## INNOVATIVE APPROACHES

An example of an innovative approach involved the use of an open-architecture GIS-based tool in the Anacostia pilot project to select the best stormwater management strategies to incorporate into DOT watershed planning and construction process. A rating system for various watershed protection and restoration opportunities was developed for leveraging resources and identifying key partners.

## RECOGNITION PROGRAM

The GHP acknowledges and supports people, programs, projects, and activities in the Mid-Atlantic Region which demonstrates excellence in pursuing the Green Highways goal of “better than before” for each focus area. Categories are defined through a collaborative process involving key stakeholders and emphasize integrated sustainable planning, design, construction, maintenance, and materials recycling. Initial rating criteria include economic efficiencies and regulatory flexibility.





Stewardship  
Safety  
Sustainability

# GHP DIGEST

Green Highways Partnership  
Information Network

[www.greenhighways.org](http://www.greenhighways.org)

Green Highways, Roads, Infrastructure

The Green Highways Partnership is pleased to announce the release of the "GHP Digest." As a part of our communications and outreach efforts, we are now eye-tracking and selecting pertinent articles, stories and information from over 60,000 news and media sources, the web sites of our partners, NGO's, legislative news and information networks, as well as, universities and research centers nationally and throughout Canada. The primary aim of a regular "GHP Digest" is to keep our partners up-to-date on events, issues and advances in key areas of interest, improving knowledge of new developments, innovation and advances in technology, changes to our web site, announcements of upcoming events of interest, and most importantly, how well the word on green transportation and infrastructure initiatives is reaching the public. As a Green Highways Partner, the "GHP Digest" is currently scheduled for weekly distribution to your e-mail address.

If you are interested in receiving the weekly edition of the GHP Digest or would like more information, contact:

Robb Jolly  
GHP Chair of Communications, Outreach and Development  
[robb@revisionsd.com](mailto:robb@revisionsd.com)

## Contacts

Dominique Lueckenhoff  
Associate Director,  
Office of State and Watershed Partnerships  
USEPA Region 3 WPD  
[lueckenhoff.dominique@epa.gov](mailto:lueckenhoff.dominique@epa.gov)

Telephone: 215.814.2740

Denise Rigney  
US EPA Region 3 WPD,  
Transportation Liaison  
[rigney.denise@epa.gov](mailto:rigney.denise@epa.gov)

Green Highways Partnership  
[www.greenhighways.org](http://www.greenhighways.org)



Copyright © 2008  
Green Highways Partnership



**Stewardship, Safety, Sustainability**