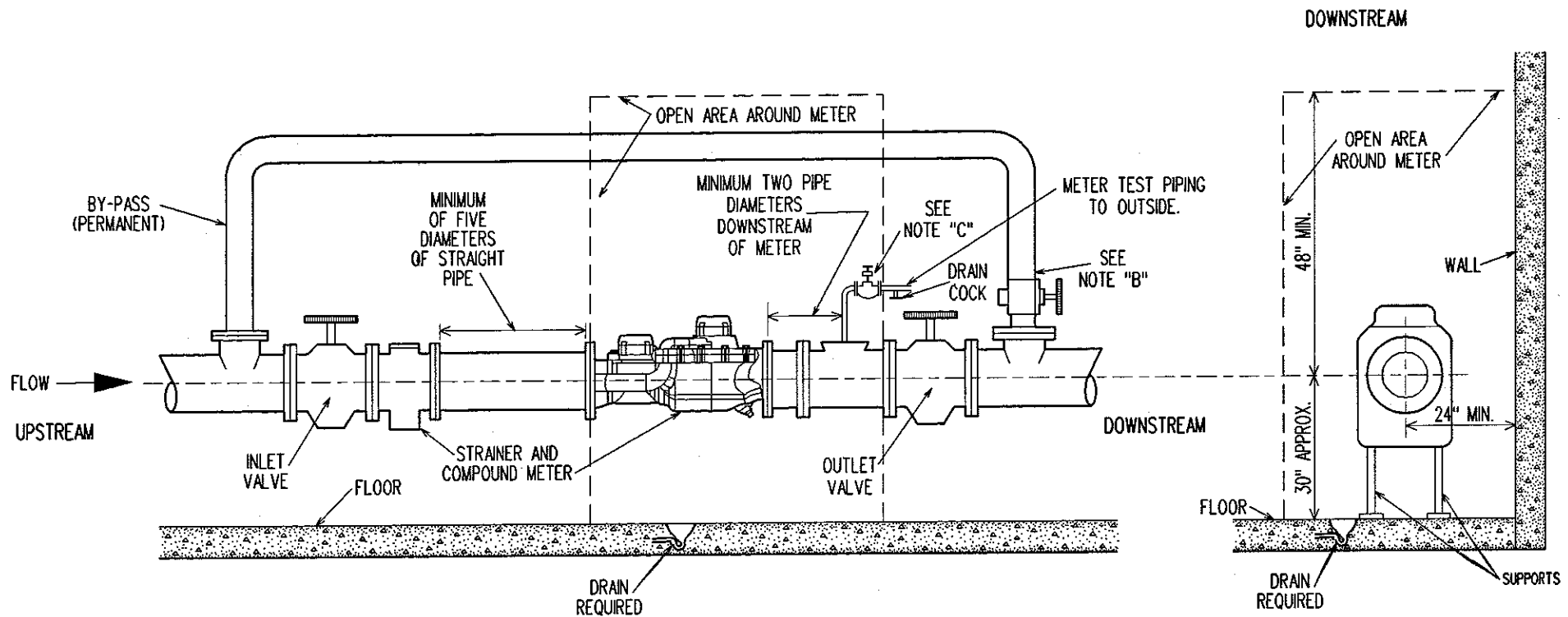


COMPOUND METER



PROPER INSTALLATION: The following installation guidelines will insure optimum field performance and reliability when installing a Badger Compound Series meter.

1. A Strainer IS REQUIRED to insure optimum flow conditioning and protection for the Compound Series meter measuring element.
2. Compound meters, with a strainer, REQUIRE a minimum of five (5) pipe diameters of straight pipe upstream of the meter.
3. ONLY full-open gate valves should be used immediately upstream of the meter. Butterfly valves MUST be five (5) pipe diameters or more upstream of the meter. Full-open gate or butterfly valves can be used downstream.
4. DO NOT install pressure reducing devices or check valves upstream of the meter.
5. Unweighted check valves MUST be located at least three (3) pipe diameters downstream of the meter.
6. Pressure reducing devices and externally weighted check valves MUST be located at least five (5) pipe diameters downstream of the meter.

For more info see:
www.badgermeter.com

Meter Size	Meter Weight	Meter Lay Length	Strainer Lay Length	Flow Rate
3"	71.5 lbs	17"	7"	1/2- 450 GPM
4"	85 lbs	20"	9"	3/4- 1000 GPM
6"	152 lbs	24"	9"	3/4- 2000 GPM

- NOTE "B" -----By-pass required, one size smaller allowed.
- NOTE "C" -----2" Valve is 1/4 turn ball valve w/ drain cock after valve.
- SPEC. NOTE -----Use standard companion flanges and valves.
 -----NO insulation or covering on meters or flanges.
 -----NO PVC piping allowed.

MADISON WATER UTILITY	
COMPOUND METER	
DATE: 12/17/03	RECOMMENDED METER INSTALLATION