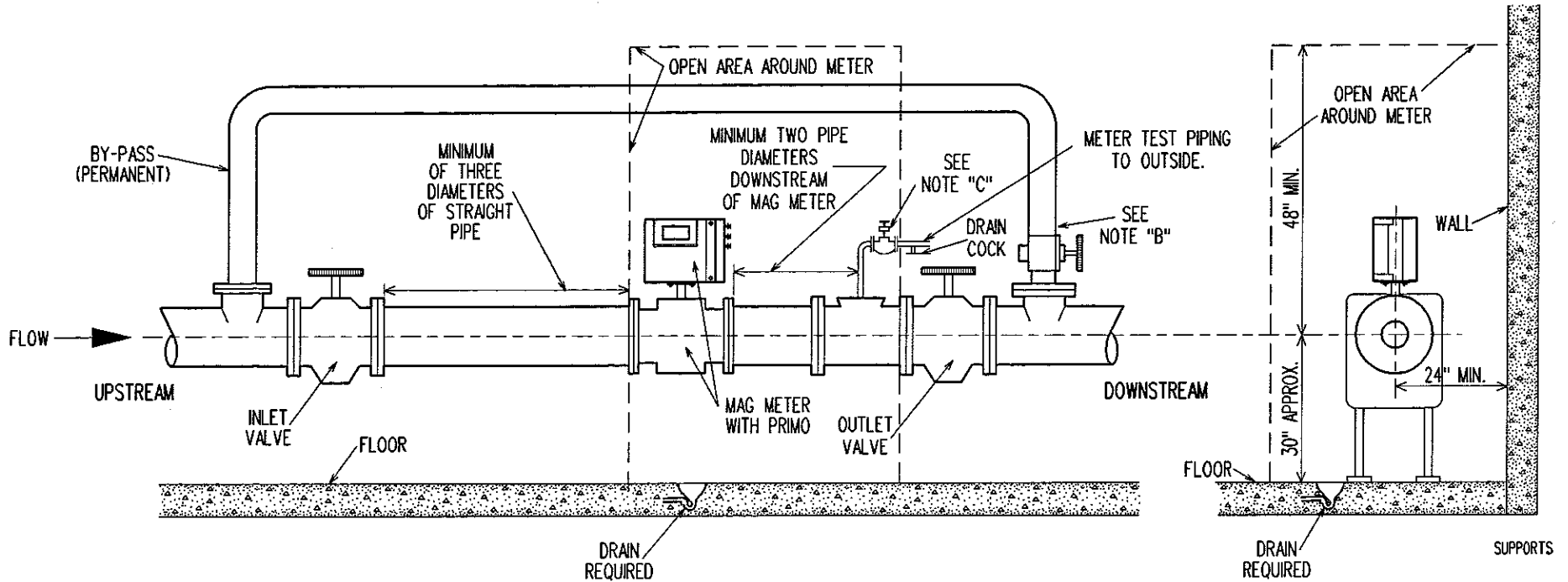


# MAG METER



**PROPER INSTALLATION:** The following installation guidelines will insure optimum field performance and reliability when installing a Badger Mag meter.

1. For optimum accuracy performance it is required to provide sufficient inlet and outlet straight pipe runs. An equivalent to 3 diameters of straight pipe is required on the inlet side, and 2 diameters on the outlet side.
2. Only full open gate valves should be used upstream of meter. Any valve can be used downstream.
3. Water line applications with a chemical injection point should be installed downstream of the meter to eliminate any issues with the meter performance.
4. Avoid pipe locations where the flow is pulsating, such as in the outlet side of piston or diaphragm pumps.
5. Avoid locations near equipment producing electrical interference such as electric motors, transformers, variable frequency, etc.

For more DETAILED info go to:

[www.badgermeter.com](http://www.badgermeter.com)

(at bottom of page) click on product literature. (under utility)

click on - Mag Meter. (under installation and operation manual)

click on:

Magnetoflow Flanged Meter w/ ModelPrimo 3.1

NOTE "B" -----By-pass required, one size smaller allowed.

NOTE "C" -----2" Valve is 1/4 turn ball valve w/ drain cock after valve.

SPEC. NOTE -----Use standard companion flanges and valves.

-----NO insulation or covering on meters or flanges.

-----NO PVC piping allowed.

MADISON WATER UTILITY

MAG METER

DATE:

1/2/04

RECOMMENDED METER  
INSTALLATION