






PLOT SCALE: _____

PLOT NAME: _____

REV. DATE: _____

ORIGINATOR: CITY OF MADISON, STREETS DIVISION

BLAIR STREET SANITARY SEWER REPAIR 2012
TRAFFIC CONTROL PLAN
CITY OF MADISON

LEGEND	
	DRUM DELINEATOR
	TYPE 3 BARRICADE
	TYPE 3 BARRICADE W/SIGN
	ELECTRONIC ARROWBOARD
	WORK ZONE

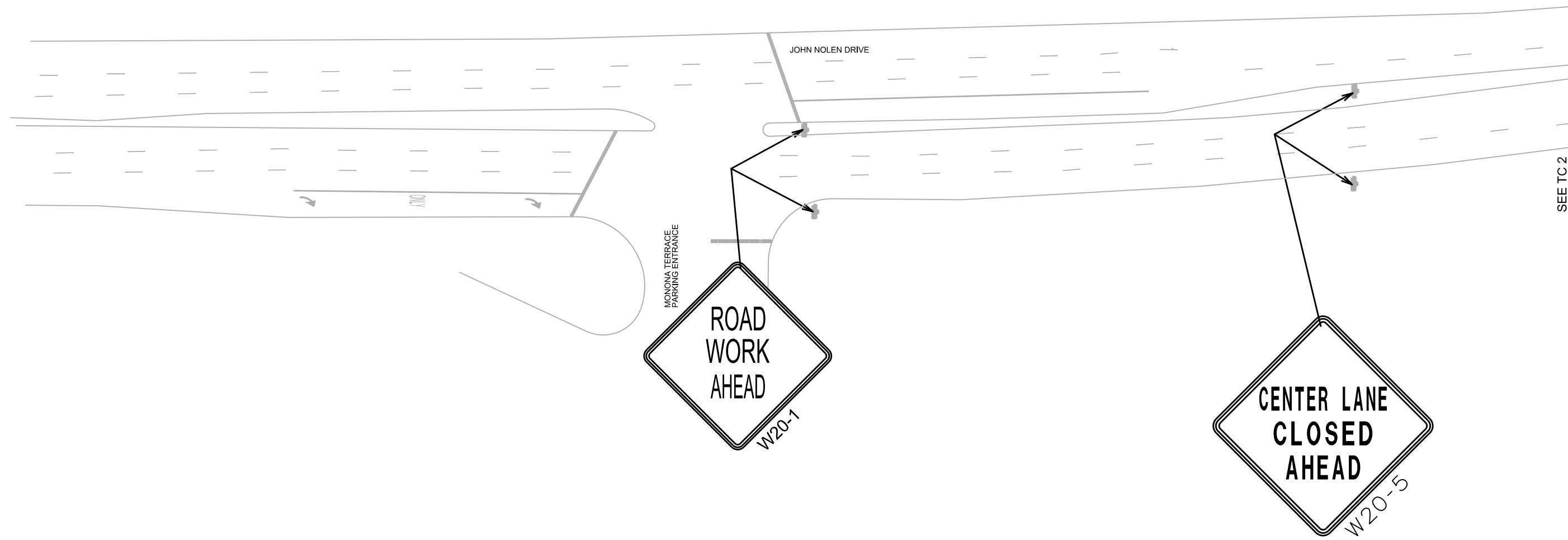


PLOT SCALE:

PLOT NAME:

REV. DATE:




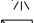
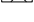
ORIGINATOR: CITY OF MADISON, TRAFFIC ENG. DIV.



NOTE: SIGN SPACING 350 FEET APART
AND FROM START OF TAPER

BLAIR STREET SANITARY SEWER REPAIR 2012
TRAFFIC CONTROL PLAN
CITY OF MADISON

LEGEND

-  DRUM DELINEATOR
-  TYPE 3 BARRICADE
-  TYPE 3 BARRICADE W/SIGN
-  ELECTRONIC ARROWBOARD
-  WORK ZONE

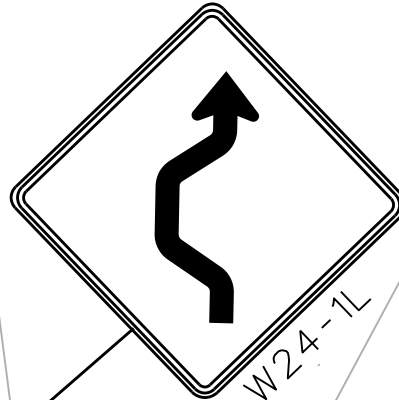


SEE TC 1

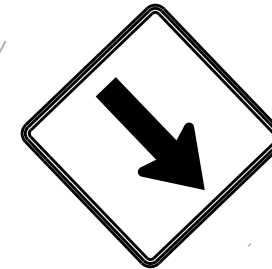
LANE CLOSURE TAPER MUST BE COMPLETED PRIOR TO CURVE



R3-2



W24-1L



WO12-1R



R3-2

4" DOUBLE YELLOW

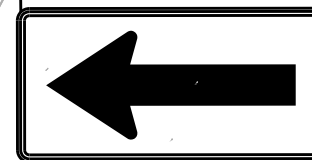
WILSON STREET

105'
115'

4" WHITE TAPE

WILLIAMSON STREET

MAINTAIN ACCESS TO DRIVEWAY



WO1-6L



R11-2(MOD)

BLAIR STREET

RAILROAD STREET

SEE TC 3

NOTE: TAPERS ON BLAIR STREET 105'
TAPERS ON JOHN NOLEN DRIVE 225'


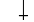
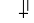

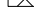
PLOT SCALE:

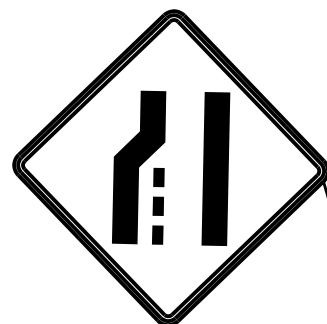
PLOT NAME:

REV. DATE:

ORIGINATOR: CITY OF MADISON, TRAFFIC ENG. DIV.

BLAIR STREET SANITARY SEWER REPAIR
TRAFFIC CONTROL PLAN
CITY OF MADISON

LEGEND	
	DRUM DELINEATOR
	TYPE 3 BARRICADE
	TYPE 3 BARRICADE W/SIGN
	ELECTRONIC ARROWBOARD
	WORK ZONE



W4-2L



W20-5L



W20-1

PLOT SCALE:

PLOT NAME:

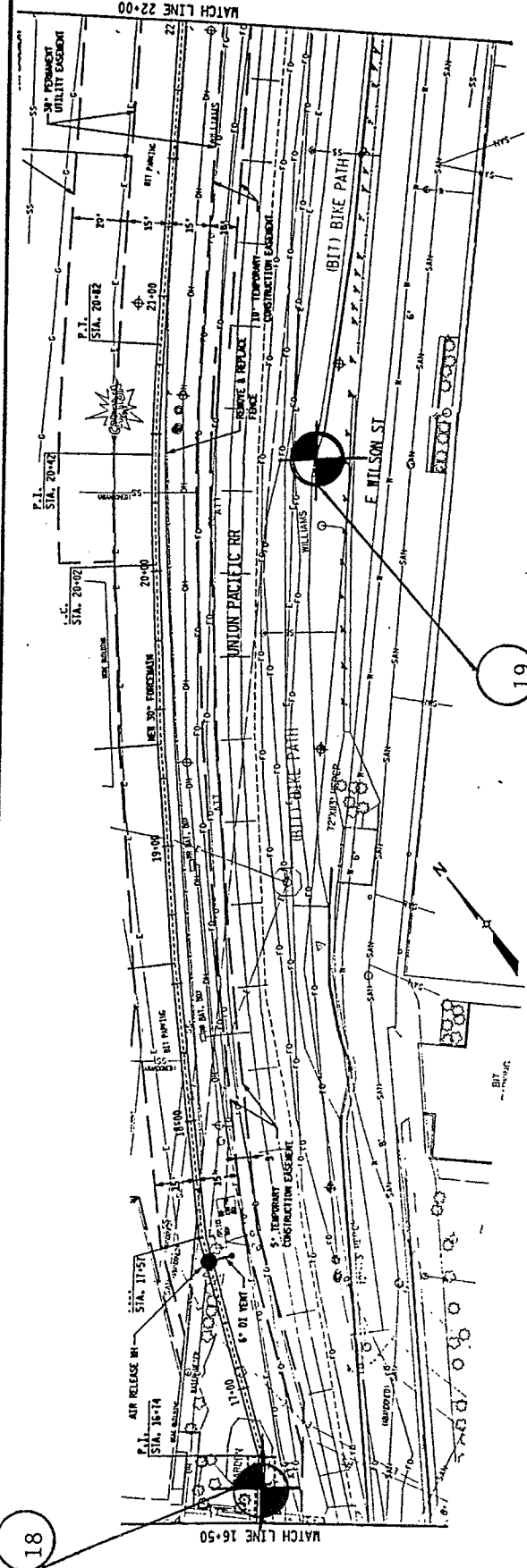
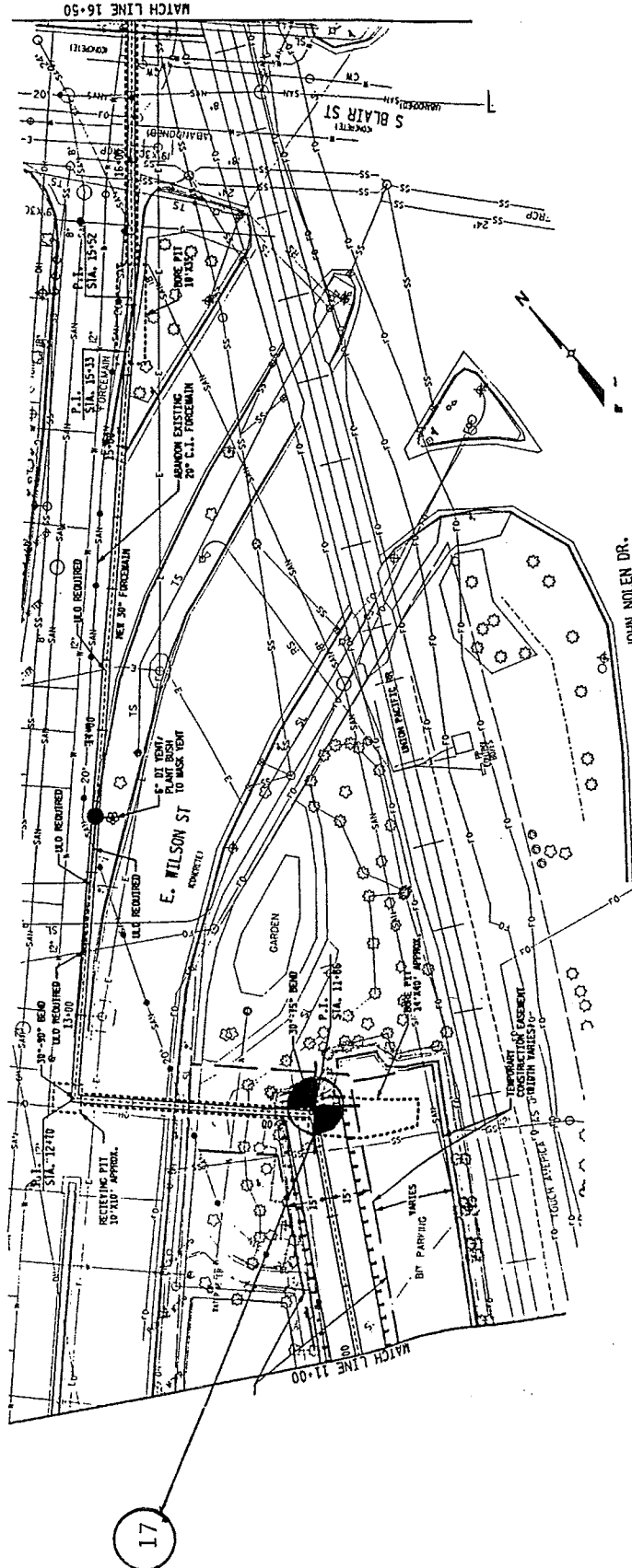
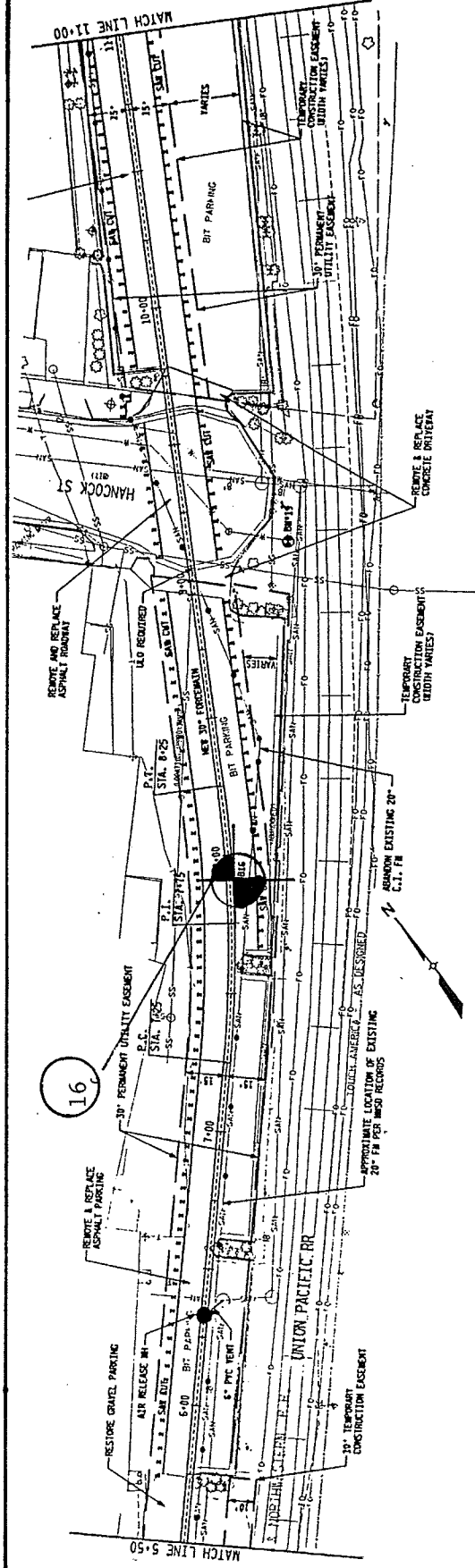
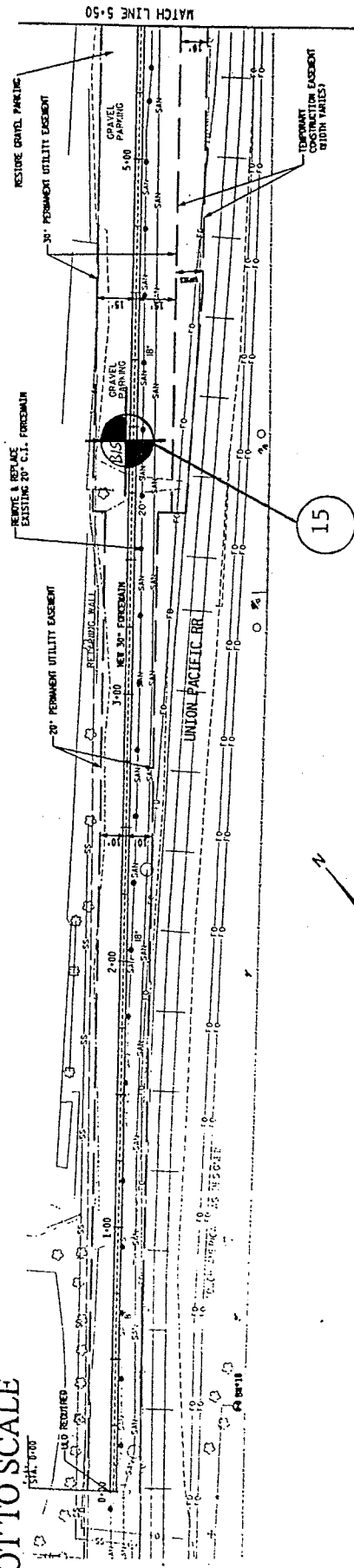
REV. DATE:

SEE TC 2

NOTE: SIGN SPACING 350 FEET APART

NOTE: SIGNS SPACED 200' APART AND FROM START OF TAPER

* NOT TO SCALE



- Boring Location Plan adapted from the Preliminary Utility Plan that was provided by the Earth Tech.
- Test boring locations were chosen and marked by representatives of Earth Tech prior to our filed services. Ground surface elevations were also provided by Earth Tech.

Figure 4
Boring Location Plan

Proposed MMSD Crosstown Forceman Replacement
Madison, Wisconsin
Project No. 5G-0104001



BORING LOGS INCLUDED IN
CONTRACT SPECIAL PROVISIONS
CITY CONTRACT #6938