

BID OF _____

2014

PROPOSAL, CONTRACT, BOND AND SPECIFICATIONS

FOR

**STOUGHTON ROAD/VOGES ROAD INTERSECTION IMPROVEMENT
ASSESSMENT DISTRICT - 2014**

CONTRACT NO. 7002

PROJECT NO. 53W1332

IN

MADISON, DANE COUNTY, WISCONSIN

AWARDED BY THE COMMON COUNCIL
MADISON, WISCONSIN ON _____

CITY ENGINEERING DIVISION
1600 EMIL STREET
MADISON, WISCONSIN 53713

<https://bidexpress.com/login>

**STOUGHTON ROAD/VOGES ROAD INTERSECTION IMPROVEMENT
ASSESSMENT DISTRICT - 2014
CONTRACT NO. 7002**

INDEX

SECTION A: ADVERTISEMENT FOR BIDS AND INSTRUCTIONS TO BIDDERS.....A-1
SECTION B: PROPOSAL SECTION.....B-1
SECTION C: SMALL BUSINESS ENTERPRISE C-1
SECTION D: SPECIAL PROVISIONS..... D-1
SECTION E: BIDDER'S ACKNOWLEDGEMENTE-1
SECTION F: DISCLOSURE OF OWNERSHIP & BEST VALUE CONTRACTING.....F-1
SECTION G: BID BOND G-1
SECTION H: AGREEMENT..... H-1
SECTION I: PAYMENT AND PERFORMANCE BOND I-1
SECTION J: PREVAILING WAGE RATES..... J-1

This Proposal, and Agreement have
been prepared by:

**CITY ENGINEERING DIVISION
CITY OF MADISON
MADISON, DANE COUNTY, WISCONSIN**



Robert F. Phillips, P.E., City Engineer

RFP: lh

SECTION A: ADVERTISEMENT FOR BIDS AND INSTRUCTIONS TO BIDDERS

REQUEST FOR BID FOR PUBLIC WORKS CONSTRUCTION CITY OF MADISON, WISCONSIN

A BEST VALUE CONTRACTING MUNICIPALITY

| | |
|---|---|
| PROJECT NAME: | STOUGHTON ROAD/VOGES ROAD INTERSECTION IMPROVEMENT ASSESSMENT DISTRICT - 2014 |
| CONTRACT NO.: | 7002 |
| SBE GOAL | 5% |
| BID BOND | 5% |
| PRE BID MEETING (1:00 P.M.) | MAY 2, 2014 |
| PREQUALIFICATION APPLICATION DUE (1:00 P.M) | MAY 2, 2014 |
| BID SUBMISSION (1:00 P.M.) | MAY 9, 2014 |
| BID OPEN (1:30 P.M.) | MAY 9, 2014 |
| PUBLISHED IN WSJ | APRIL 25 & MAY 2, 2014 |

PRE BID MEETING: Representatives of the Affirmative Action Department will be present to discuss the Small Business Enterprise requirements at 1600 Emil Street, Madison Wisconsin.

PREQUALIFICATION APPLICATION: Forms are available on our website, www.cityofmadison.com/business/pw/forms.cfm. If not currently prequalified in the categories listed in Section A, an amendment to your Prequalification will need to be submitted prior to the same due date. Postmark is not applicable.

BIDS TO BE SUBMITTED by hand to 1600 EMIL ST., MADISON, WI 53713 or online at www.bidexpress.com.

THE BID OPENING is at 1600 EMIL ST., MADISON, WI 53713.

STANDARD SPECIFICATIONS

The City of Madison's Standard Specifications for Public Works Construction - 2014 Edition, as supplemented and amended from time to time, forms a part of these contract documents as if attached hereto.

These standard specifications are available on the City of Madison Public Works website, www.cityofmadison.com/Business/PW/specs.cfm.

The Contractor shall review these Specifications prior to preparation of proposals for the work to be done under this contract, with specific attention to Article 102, "BIDDING REQUIREMENTS AND CONDITIONS" and Article 103, "AWARD AND EXECUTION OF THE CONTRACT." For the convenience of the bidder, below are highlights of three subsections of the specifications.

SECTION 102.1: PRE-QUALIFICATION OF BIDDERS

In accordance with Wisconsin State Statutes 66.0901 (2) and (3), all bidders must submit to the Board of Public Works proof of responsibility on forms furnished by the City. The City requires that all bidders be qualified on a biennial basis.

Bidders must present satisfactory evidence that they have been regularly engaged in the type of work specified herein and they are fully prepared with necessary capital, materials, machinery and supervisory

personnel to conduct the work to be contracted for to the satisfaction of the City. All bidders must be pre-qualified by the Board of Public Works for the type of construction on which they are bidding prior to the opening of the bid.

In accordance with Section 39.02(9)(a)l. of the General Ordinances, all bidders shall submit in writing to the Affirmative Action Division Manager of the City of Madison, a Certificate of Compliance or an Affirmative Action Plan at the same time or prior to the submission of the proof of responsibility forms.

The bidder shall be disqualified if the bidder fails to or refuses to, prior to opening of the bid, submit a Certificate of compliance, Affirmative Action Plan or Affirmative Action Data Update, as applicable, as defined by Section 39.02 of the General Ordinances (entitled Affirmative Action) and as required by Section 102.11 of the Standard Specifications.

SECTION 102.4 PROPOSAL

No bid will be accepted that does not contain an adequate or reasonable price for each and every item named in the Schedule of Unit Prices.

A lump sum bid for the work in accordance with the plans and specifications is required. The lump sum bid must be the same as the total amounts bid for the various items and it shall be inserted in the space provided.

All papers bound with or attached to the proposal form are considered a part thereof and must not be detached or altered when the proposal is submitted. The plans, specifications and other documents designated in the proposal form will be considered a part of the proposal whether attached or not.

A proposal submitted by an individual shall be signed by the bidder or by a duly authorized agent. A proposal submitted by a partnership shall be signed by a member/partner or by a duly authorized agent thereof. A proposal submitted by a corporation shall be signed by an authorized officer or duly authorized registered agent of such corporation, and the proposal shall show the name of the State under the laws of which such corporation was chartered. The required signatures shall in all cases appear in the space provided thereof on the proposal.

Each proposal shall be placed, together with the proposal guaranty, in a sealed envelope, so marked as to indicate name of project, the contract number or option to which it applies, and the name and address of the Contractor or submitted electronically through Bid Express (www.bidexpress.com). Proposals will be accepted at the location, the time and the date designated in the advertisement. Proposals received after the time and date designated will be returned to the bidder unopened.

The Bidder shall execute the Disclosure of Ownership form. REFER TO SECTION F.

SECTION 102.5: BID DEPOSIT (PROPOSAL GUARANTY)

All bids, sealed or electronic, must be accompanied with a Bid Bond equal to at least 5% of the bid or a Certificate of Annual/Biennial Bid Bond or certified check, payable to the City Treasurer. Bid deposit of the successful bidders shall be returned within forty-eight (48) hours following execution of the contract and bond as required.

PREVAILING WAGE RATES

Prevailing Wage Rates may be required and are attached in Section J of the contract. See Special Provisions to determine applicability.

Bidders for this Contract(s) must be Pre-Qualified for at least one of the following type(s) of construction denoted by an

Building Demolition

- 101 Asbestos Removal
- 120 House Mover

- 110 Building Demolition

Street, Utility and Site Construction

- 201 Asphalt Paving
- 205 Blasting
- 210 Boring/Pipe Jacking
- 215 Concrete Paving
- 220 Con. Sidewalk/Curb & Gutter/Misc. Flat Work
- 221 Concrete Bases and Other Concrete Work
- 222 Concrete Removal
- 225 Dredging
- 230 Fencing
- 235 Fiber Optic Cable/Conduit Installation
- 240 Grading and Earthwork
- 241 Horizontal Saw Cutting of Sidewalk
- 242 Infrared Seamless Patching
- 245 Landscaping, Maintenance
- 250 Landscaping, Site and Street
- 251 Parking Ramp Maintenance
- 252 Pavement Marking
- 255 Pavement Sealcoating and Crack Sealing
- 260 Petroleum Above/Below Ground Storage Tank Removal/Install
- 265 Retaining Walls, Precast Modular Units

- 270 Retaining Walls, Reinforced Concrete
- 275 Sanitary, Storm Sewer and Water Main Construction
- 276 Sawcutting
- 280 Sewer Lateral Drain Cleaning/Internal TV Insp.
- 285 Sewer Lining
- 290 Sewer Pipe Bursting
- 295 Soil Borings
- 300 Soil Nailing
- 305 Storm & Sanitary Sewer Laterals & Water Svc.
- 310 Street Construction
- 315 Street Lighting
- 318 Tennis Court Resurfacing
- 320 Traffic Signals
- 325 Traffic Signing & Marking
- 332 Tree pruning/removal
- 333 Tree, pesticide treatment of
- 335 Trucking
- 340 Utility Transmission Lines including Natural Gas, Electrical & Communications
- 399 Other _____

Bridge Construction

- 501 Bridge Construction and/or Repair

Building Construction

- 401 Floor Covering (including carpet, ceramic tile installation, rubber, VCT)
- 402 Building Automation Systems
- 403 Concrete
- 404 Doors and Windows
- 405 Electrical - Power, Lighting & Communications
- 410 Elevator - Lifts
- 412 Fire Suppression
- 413 Furnishings - Furniture and Window Treatments
- 415 General Building Construction, Equal or Less than \$250,000
- 420 General Building Construction, \$250,000 to \$1,500,000
- 425 General Building Construction, Over \$1,500,000
- 428 Glass and/or Glazing
- 429 Hazardous Material Removal
- 430 Heating, Ventilating and Air Conditioning (HVAC)
- 433 Insulation - Thermal
- 435 Masonry/Tuck pointing

- 437 Metals
- 440 Painting and Wallcovering
- 443 Playground Installer
- 445 Plumbing
- 450 Pump Repair
- 455 Pump Systems
- 460 Roofing and Moisture Protection
- 464 Tower Crane Operator
- 461 Solar Photovoltaic/Hot Water Systems
- 465 Soil/Groundwater Remediation
- 466 Warning Sirens
- 470 Water Supply Elevated Tanks
- 475 Water Supply Wells
- 480 Wood, Plastics & Composites - Structural & Architectural
- 499 Other _____

State of Wisconsin Certifications

- 1 Class 5 Blaster - Blasting Operations and Activities 2500 feet and closer to inhabited buildings for quarries, open pits and road cuts.
- 2 Class 6 Blaster - Blasting Operations and Activities 2500 feet and closer to inhabited buildings for trenches, site excavations, basements, underwater demolition, underground excavations, or structures 15 feet or less in height.
- 3 Class 7 Blaster - Blasting Operations and Activities for structures greater than 15' in height, bridges, towers, and any of the objects or purposes listed as "Class 5 Blaster or Class 6 Blaster".
- 4 Petroleum Above/Below Ground Storage Tank Removal and Installation (Attach copies of State Certifications.)
- 5 Hazardous Material Removal (Contractor to be certified for asbestos and lead abatement per the Wisconsin Department of Health Services, Asbestos and Lead Section (A&LS).) See the following link for application: www.dhs.wisconsin.gov/Asbestos/Cert. State of Wisconsin Performance of Asbestos Abatement Certificate must be attached.
- 6 Certification number as a Certified Arborist or Certified Tree Worker as administered by the International Society of Arboriculture
- 7 Pesticide application (Certification for Commercial Applicator For Hire with the certification in the category of turf and landscape (3.0) and possess a current license issued by the DATCP)
- 8 State of Wisconsin Master Plumbers License.

SECTION B: PROPOSAL

Please refer to the
Bid Express Website
at <https://bidexpress.com>
look up contract number
and go to
Section B: Proposal Page

You can access all City of Madison bid solicitations for FREE at www.bidexpress.com

Click on the "Register for Free" button and follow the instructions to register your company and yourself. You will be asked for a payment subscription preference, since you may wish to bid online someday. Simply choose the method to pay on a 'per bid' basis. This requires no payment until / unless you actually bid online. You can also choose the monthly subscription plan at this time. You will, however, be asked to provide payment information. Remember, you can change your preference at anytime. You will then be able to complete your free registration and have full access to the site. Your free access does not require completion of the 'Digital ID' process, so you will have instant access for viewing and downloading. To be prepared in case you ever do wish to bid online, you may wish to establish your digital ID also, since you cannot bid without a Digital ID.

If you have any problems with the free registration process, you can call the bidexpress help team, toll free at 1-888-352-2439 (option 1, option1).

SECTION C: SMALL BUSINESS ENTERPRISE

Instructions to Bidders City of Madison SBE Program Information

2 Small Business Enterprise (SBE) Program Information

2.1 Policy and Goal

The City of Madison reaffirms its policy of nondiscrimination in the conduct of City business by maintaining a procurement process which remains open to all who have the potential and ability to sell goods and services to the City. It is the policy of the City of Madison to allow Small Business Enterprises (SBE) maximum feasible opportunity to participate in City of Madison contracting. The bidder acknowledges that its bid has been submitted in accordance with the SBE program and is for the public's protection and welfare.

Please refer to the "ADVERTISEMENT FOR BIDS" for the goal for the utilization of SBEs on this project. SBEs may participate as subcontractors, vendors and/or suppliers, which provide a commercially useful function. The dollar value for SBE suppliers or 'materials only' vendors shall be discounted to 60% for purposes of meeting SBE goals.

A bidder which achieves or exceeds the SBE goal will be in compliance with the SBE requirements of this project. In the event that the bidder is unable to achieve the SBE goal, the bidder must demonstrate that a good faith effort to do so was made. Failure to either achieve the goal or demonstrate a good faith effort to do so will be grounds for the bidder being deemed a non-responsible contractor ineligible for award of this contract.

A bidder may count towards its attainment of the SBE goal only those expenditures to SBEs that perform a commercially useful function. For purposes of evaluating a bidder's responsiveness to the attainment of the SBE goal, the contract participation by an SBE is based on the percentage of the total base bid proposed by the Contractor. The total base bid price is inclusive of all addenda.

Work performed by an SBE firm in a particular transaction can be counted toward the goal only if it involves a commercially useful function. That is, in light of industry practices and other relevant considerations, does the SBE firm have a necessary and useful role in the transaction, of a kind for which there is a market outside the context of the SBE Program, or is the firm's role a superfluous step added in an attempt to obtain credit towards goals? If, in the judgment of the Affirmative Action Division, the SBE firm will not perform a commercially useful function in the transaction, no credit towards goals will be awarded.

The question of whether a firm is performing a commercially useful function is completely separate from the question of whether the firm is an eligible SBE. A firm is eligible if it meets the definitional criteria and ownership and control requirements, as set forth in the City of Madison's SBE Program.

If the City of Madison determines that the SBE firm is performing a commercially useful function, then the City of Madison must then decide what that function is. If the commercially useful function is that of an SBE vendor / supplier that regularly transacts business with the respective product, then the City of Madison will count 60% of the value of the product supplied toward SBE goals.

To be counted, the SBE vendor / supplier must be engaged in selling the product in question to the public. This is important in distinguishing an SBE vendor / supplier, which has a regular trade with a variety of customers, from a firm which performs supplier-like functions on an ad hoc basis or for only one or two contractors with whom it has a special relationship.

A supplier of bulk goods may qualify as an eligible SBE vendor / supplier if it either maintains an inventory or owns or operates distribution equipment. With respect to the distribution equipment; e.g., a fleet of trucks, the term "operates" is intended to cover a situation in which the supplier leases the equipment on a regular basis for its entire business. It is not intended to cover a situation in which the firm simply provides drivers for trucks owned or leased by another party; e.g., a prime contractor, or leases such a party's trucks on an ad hoc basis for a specific job.

If the commercially useful function being performed is not that of a qualified SBE vendor / supplier, but rather that of delivery of products, obtaining bonding or insurance, procurement of personnel, acting as a broker or manufacturer's representative in the procurement of supplies, facilities, or materials, etc., only the fees or commissions will apply towards the goal.

For example, a business that simply transfers title of a product from manufacturer to ultimate purchaser; e. g., a sales representative who re-invoices a steel product from the steel company to the Contractor, or a firm that puts a product into a container for delivery would not be considered a qualified SBE vendor / supplier. The Contractor would not receive credit based on a percentage of the cost of the product for working with such firms.

Concerning the use of services that help the Contractor obtain needed supplies, personnel, materials or equipment to perform a contract: only the fee received by the service provider will be counted toward the goal. For example, use of a SBE sales representative or distributor for a steel company, if performing a commercially useful function at all, would entitle the Contractor receiving the steel to count only the fee paid to the representative or distributor toward the goal. This provision would also govern fees for professional and other services obtained expressly and solely to perform work relating to a specific contract.

Concerning transportation or delivery services: if an SBE trucking company picks up a product from a manufacturer or a qualified vendor / supplier and delivers the product to the Contractor, the commercially useful function it is performing is not that of a supplier, but simply that of a transporter of goods. Unless the trucking company is itself the manufacturer or a qualified vendor / supplier in the product, credit cannot be given based on a percentage of the cost of the product. Rather, credit would be allowed for the cost of the transportation service.

The City is aware that the rule's language does not explicitly mention every kind of business that may contribute work on this project. In administering these programs, the City would, on a case-by-case basis, determine the appropriate counting formula to apply in a particular situation.

2.2 Contract Compliance

Questions concerning the SBE Program shall be directed to the Contract Compliance Officer of the City of Madison Department of Civil Rights, Affirmative Action Division, 210 Martin Luther King, Jr. Blvd., Room 523, Madison, WI 53703; telephone (608) 266-4910.

2.3 Certification of SBE by City of Madison

The Affirmative Action Division maintains a directory of SBEs which are currently certified as such by the City of Madison. Contact the Contract Compliance Officer as indicated in Section 2.2 to receive a copy of the SBE Directory or you may access the SBE Directory online at www.cityofmadison.com/dcr/aaTBDir.cfm.

All contractors, subcontractors, vendors and suppliers seeking SBE status must complete and submit the **Targeted Business Certification Application** to the City of Madison Affirmative Action Division by the time and date established for receipt of bids. A copy of the Targeted Business Certification Application is available by contacting the Contract Compliance Officer at the address and telephone indicated in Section 2.2 or you may access the Targeted Business Certification Application online at www.cityofmadison.com/dcr/aaTBDir.cfm. Submittal of the Targeted Business Certification Application by the time specified does not guarantee that the applicant will be certified as a SBE eligible to be utilized towards meeting the SBE goal for this project.

2.4 Small Business Enterprise Compliance Report

2.4.1 Good Faith Efforts

Bidders shall take all necessary affirmative steps to assure that SBEs are utilized when possible and that the established SBE goal for this project is achieved. A contractor who self performs a portion of the work, and is pre-qualified to perform that category of work, may subcontract that portion of the work, but shall not be required to do so. When a bidder is unable to achieve the established SBE goal, the bidder must demonstrate that a good faith effort to do so was made. Such a good faith effort should include the following:

- 2.4.1.1 Attendance at the pre-bid meeting.
- 2.4.1.2 Using the City of Madison's directory of certified SBEs to identify SBEs from which to solicit bids.
- 2.4.1.3 Assuring that SBEs are solicited whenever they are potential sources.
- 2.4.1.4 Referring prospective SBEs to the City of Madison Affirmative Action Division for certification.
- 2.4.1.5 Dividing total project requirements into smaller tasks and/or quantities, where economically feasible, to permit maximum feasible SBE participation.
- 2.4.1.6 Establishing delivery schedules, where requirements permit, which will encourage participation by SBEs.
- 2.4.1.7 Providing SBEs with specific information regarding the work to be performed.
- 2.4.1.8 Contacting SBEs in advance of the deadline to allow such businesses sufficient time to prepare a bid.
- 2.4.1.9 Utilizing the bid of a qualified and competent SBE when the bid of such a business is deemed reasonable (i.e. 5% above the lowest bidder), although not necessarily low.
- 2.4.1.10 Contacting SBEs which submit a bid, to inquire about the details of the bid and confirm that the scope of the work was interpreted as intended.

2.4.2 Reporting SBE Utilization and Good Faith Efforts

The Small Business Enterprise Compliance Report is to be submitted by the bidder with the bid: This report is due by the specified bid closing time and date. Bids submitted without a completed SBE Compliance Report as outlined below

shall be deemed non-responsible and the bidder ineligible for award of this contract.

2.4.2.1 If the Bidder meets or exceeds the goal established for SBE utilization, the Small Business Enterprise Compliance Report shall consist of the following:

2.4.2.1.1 **Cover Page**, Page C-6; and

2.4.2.1.2 **Summary Sheet**, C-7.

2.4.2.2 If the bidder does not meet the goal established for SBE utilization, the Small Business Enterprise Compliance Report shall consist of the following:

2.4.2.2.1 **Cover Page**, Page C-6;

2.4.2.2.2 **Summary Sheet**, C-7; and

2.4.2.2.3 **SBE Contact Report**, C-8 and C-9. (A separate Contact Report must be completed for each applicable SBE which is not utilized.)

2.5 Appeal Procedure

A bidder which does not achieve the established goal and is deemed non-responsible for failure to demonstrate a good faith effort to achieve such goal and subsequently denied eligibility for award of contract may, within 72 hours of receiving such notification, appeal that decision to a special appeals committee composed of three (3) members of the Affirmative Action Commission, three (3) members of the Board of Public Works and a seventh member appointed by the Mayor. All appeals must be made in writing to the City Engineer and received within 72 hours of City of Madison's notice. Postmark not applicable.

2.6 SBE Requirements After Award of the Contract

The successful bidder shall identify SBE subcontractors, suppliers and vendors on the subcontractor list in accordance with the specifications. The Contractor shall submit a detailed explanation of any variances between the listing of SBE subcontractors, vendors and/or suppliers on the subcontractor list and the Contractor's SBE Compliance Report for SBE participation.

No change in SBE subcontractors, vendors and/or suppliers from those SBEs indicated in the SBE Compliance Report will be allowed without prior approval from the Engineer and the Affirmative Action Division. The contractor shall submit in writing to the City of Madison Affirmative Action Division a request to change any SBE citing specific reasons which necessitate such a change. The Affirmative Action Division will use a general test of reasonableness in approving or rejecting the contractor's request for change. If the request is approved, the Contractor will make every effort to utilize another SBE if available.

The City will monitor the project to ensure that the actual percentage commitment to SBE firms is carried out.

2.7 SBE Definition and Eligibility Guidelines

A Small Business Enterprise is a business concern awarded certification by the City of Madison. For the purposes of this program a Small Business Enterprise is defined as:

- A. An independent business operated under a single management. The business may not be a subsidiary of any other business and the stock or ownership may not be held by any individual or any business operating in the same or a similar field. In determining whether an entity qualifies as a SBE, the City shall consider all factors relevant to being an independent business including, but not limited to, the date the business was established, adequacy of its resources for the work in which it proposes to involve itself, the degree to which financial, equipment leasing and other relationships exist with other ineligible firms in the same or similar lines of work. SBE owner(s) shall enjoy the customary incidents of ownership and shall share in the risks and profits commensurate with their enjoyment interests, as demonstrated by an examination of the substance rather than form or arrangements that may be reflected in its ownership documents.
- B. A business that has averaged no more than \$4.0 million in annual gross receipts over the prior three year period and the principal owner(s) do not have a personal net worth in excess of \$1.32 million.

Firm and/or individuals that submit fraudulent documents/testimony may be barred from doing business with the City and/or forfeit existing contracts.

SBE certification is valid for one (1) year unless revoked.

**STOUGHTON ROAD/VOGES ROAD INTERSECTION IMPROVEMENT
ASSESSMENT DISTRICT - 2014
CONTRACT NO. 7002**

Small Business Enterprise Compliance Report

**This information may be submitted electronically through
Bid Express or submitted with bid in sealed envelope.**

Cover Sheet

Prime Bidder Information

Company: _____

Address: _____

Telephone Number: _____ Fax Number: _____

Contact Person/Title: _____

Prime Bidder Certification

I, _____, _____ of
Name Title

_____ of
Company certify that the information

contained in this SBE Compliance Report is true and correct to the best of my knowledge and belief.

Witness' Signature

Bidder's Signature

Date

**STOUGHTON ROAD/VOGES ROAD INTERSECTION IMPROVEMENT
ASSESSMENT DISTRICT - 2014
CONTRACT NO. 7002**

Small Business Enterprise Compliance Report

Summary Sheet

SBE Subcontractors Who Are NOT Suppliers

| Name(s) of SBEs Utilized | Type of Work | % of Total Bid Amount |
|--|--------------|-----------------------|
| | | % |
| | | % |
| | | % |
| | | % |
| | | % |
| | | % |
| | | % |
| | | % |
| | | % |
| | | % |
| | | % |
| | | % |
| | | % |
| | | % |
| | | % |
| Subtotal SBE who are NOT suppliers: | _____ | % |

SBE Subcontractors Who Are Suppliers

| Name(s) of SBEs Utilized | Type of Work | % of Total Bid Amount |
|--|-----------------------|------------------------------|
| | | % |
| | | % |
| | | % |
| | | % |
| | | % |
| | | % |
| | | % |
| Subtotal Contractors who are suppliers: | _____ % x 0.6 = _____ | % (discounted to 60%) |
| Total Percentage of SBE Utilization: | _____ %. | |

**STOUGHTON ROAD/VOGES ROAD INTERSECTION IMPROVEMENT
ASSESSMENT DISTRICT - 2014
CONTRACT NO. 7002**

Small Business Enterprise Compliance Report

SBE Contact Report

Submit separate copy of this form for each SBE which you are not able to utilize towards meeting the SBE goal for this project. Attach separate sheets if necessary.

SBE Information

Company: _____

Address: _____

Telephone Number: _____

Contact Person/Title: _____

1. Outline below all efforts to solicit a bid from the above SBE. Include date, means of contact, who from your company made this contact and the result.

2. Describe the information provided to the aforementioned SBE regarding the scope of work for which he/she was to provide a bid.

Is this the same scope of work on which the subcontractor you intend to utilize based his/her bid?

Yes No

3. Did this SBE submit a bid? Yes No

4. Is the General Contractor pre-qualified to self-perform this category of work?

Yes No

5. If you responded "Yes" to Question 3, please check the items below which apply and provide the requested detail. If you responded "No" to Question 3, please skip ahead to item 6 below.

The SBE listed above is unavailable for work on this project for the following reasons. Provide specific detail for this conclusion.

The SBE listed above is unqualified for work on this project. Provide specific details for this conclusion.

The SBE listed above provided a price that was unreasonable (i.e. more than 5% above the lowest bidder). Provide specific detail for this conclusion including the SBE's price and the price of the subcontractor you intend to utilize.

A contract with the SBE listed above may constitute a breach of the bidder's collective bargaining agreements. Provide specific detail for this conclusion including, but not limited to, correspondence from the SBE indicating it will not sign a project labor agreement and/or correspondence from the applicable trade union indicating a project labor agreement will not be allowed at the time of project bidding.

Other; please specify reason(s) other than listed above which made it impossible for you to utilize this SBE on this project.

6. Describe any other good faith efforts:

SECTION D: SPECIAL PROVISIONS

STOUGHTON ROAD/VOGES ROAD INTERSECTION IMPROVEMENT ASSESSMENT DISTRICT - 2014 CONTRACT NO. 7002

It is the intent of these Special Provisions to set forth the final contractual intent as to the matter involved and shall prevail over the Standard Specifications and plans whenever in conflict therewith. In order that comparisons between the Special Provisions can be readily made, the numbering system for the Special Provisions is equivalent to that of the Specifications.

Whenever in these Specifications the term "Standard Specifications" appears, it shall be taken to refer to the City of Madison Standard Specifications for Public Works Construction and Supplements thereto.

SECTION 102.10: PREVAILING WAGE

For this project, payment of prevailing wages (white sheet) shall be required unless the box indicating prevailing wages are not required is checked below.

Prevailing wages shall not be required when this box is checked.

If prevailing wages (white sheets) are required, the wages and benefits paid on the contract shall not be less than those specified in the Prevailing Wage Determination included with these contract documents for the following types of work:

- Building and Heavy Construction
- Sewer, Water, and Tunnel Construction
- Local Street and Miscellaneous Paving Operations
- Residential and Agricultural Construction

SECTION 102.12: BEST VALUE CONTRACTING

This Contract shall be considered a Best Value Contract if the Contractor's bid is equal to or greater than \$54,000 for a single trade contract; or equal to or greater than \$264,500 for a multi-trade contract pursuant to MGO 33.07(7).

ARTICLE 103.2: AWARD OF CONTRACT

If a Wisconsin Department of Transportation permit for performing work in the State Right-of-Way is not granted, this contract will not be awarded.

ARTICLE 104: SCOPE OF WORK

The work in this contract shall involve extending the length of the existing left turn lane from southbound Stoughton Road (USH 51) to eastbound Voges Road. The work will include removal and replacement of concrete curb and gutter and concrete pavement, reconstruction of a concrete flume, and the relocation of the storm sewer inlet to the new curb alignment.

ARTICLE 105.12: COOPERATION BY THE CONTRACTOR

The Contractor shall use care around existing trees, plantings, fences, walls, steps and driveways that are indicated on the plans to remain. Damage to these items during construction shall be repaired or replaced at the Contractor's expense. No trees, other than those shown on the plan to be removed, shall be cut without the approval of the Engineer and the City Forester; the abutting property owners shall be notified in accordance with the City's Administrative Procedure Memorandum No. 6-2.

Work in this contract may require utility relocations to install the new storm sewer main. It will be the responsibility of the Contractor to work with the utilities located in the right of way to resolve conflicts during the construction process and provide working area for installation of new facilities.

SECTION 107.3 INDEMNIFICATION

The Contractor agrees to assume the obligations of the City (“Applicant”) under the Indemnification provision of the Application/Permit to Work on Highway Right-of-Way, which is incorporated by reference and included in these Specifications.

SECTION 107.4 CONTRACTORS LIABILITY INSURANCE

Contractor’s coverage shall be primary and list the City of Madison, the State of Wisconsin Department of Transportation, and their officers, officials, agents and employees as Additional Insureds.

ARTICLE 107.6: DUST PROOFING

The Contractor shall take all necessary steps to control dust arising from operations connected with this contract. When ordered by the Engineer, the Contractor shall dust proof the construction area by using power sweepers and water. Dust proofing shall be incidental with operations connected with this contract.

SECTION 107.7 MAINTENANCE OF TRAFFIC

All traffic control shall conform to Part VI of the Federal Highways Administrations “Manual on Uniform Traffic Control Devices” (MUTCD), the State of Wisconsin Standard Facilities Development Manual (including Chapter 16 – Standard Detail Drawings) and the City of Madison Standards for sidewalk and bikeway closures.

The Contractor shall submit an acceptable, complete Traffic Control Plan, including all necessary phases and any required sidewalk or bike route closures, to the office of the City Traffic Engineer, at 215 Martin Luther King, Jr. Blvd, Suite 100, Madison, WI 53703, a minimum of five (5) working days, prior to the pre-construction meeting. The Traffic Control Plan shall address all requirements of this section of the Special Provisions. The contractor shall not start work on this project until the Traffic Engineering Division has approved a traffic control plan and traffic control devices have been installed, in accordance with the approved plan. Failure of the Contractor to obtain approval of a Traffic Control Plan, as specified above, may prevent the Contractor from starting work and shall be considered a delay of the project, caused by the Contractor.

The Contractor will be responsible for installing and maintaining traffic control in accordance with the Traffic Control Plan and as directed by the City Traffic Engineer. The Contractor shall install and maintain modifications or additions to the traffic control, as directed by the City Traffic Engineer, at no cost to the City.

The existing southbound left-turn lane at the Stoughton Rd-Voges Rd intersection may be closed within the project limits as needed. The closure time shall be minimized and shall not exceed one five-day Monday through Friday period. The existing left-turn lane may be shortened to a minimum of 220 feet, measured from the stop bar, for the duration of the project as long as safe access to the left-turn bay is provided. No work shall encroach into or impact any other areas of the intersection during peak traffic hours (7:00 AM – 9:00 AM and 3:30 PM – 6:00 PM, weekdays) and on days with special events.

The southbound left through lane at the Stoughton Rd-Voges Rd intersection may be closed during non-peak traffic hours, and only when the contractor is actively working in the lane. The closure time shall be minimized.

All emergency vehicle movements shall be maintained at all times.

When the southbound left-turn lane at the Stoughton Rd-Voges Rd intersection is closed, "NO LEFT TURN" signs shall be posted for the southbound traffic, and the left-turn traffic shall be rerouted to the Siggelkow Rd Exit. The contractor shall sign a detour for the southbound left-turn traffic to eastbound Voges Rd following southbound Stoughton Rd to eastbound Siggelkow Rd to northbound Triangle St and then back to eastbound Voges Rd.

Advance warning on electronic changeable message sign shall be placed near the Stoughton Rd-Voges Rd intersection for the southbound traffic one week prior to the left-turn lane closure. The sign shall read: "SB LEFT-TURN LN CLOSURE, STARTING DAY, DATE".

When the southbound left-turn lane at the Stoughton Rd-Voges Rd intersection is closed, one portable changeable message sign shall be provided for the southbound traffic north of the Stoughton Rd-Voges Rd intersection. The sign shall read: "USE NEXT EXIT FOR EB VOGES RD, FOLLOW DETOUR".

The location and language for the electronic message sign may be changed during the project. The contractor shall consider these changes incidental to providing the changeable message signs.

No construction equipment or materials shall be stored in the roadway or street right-of-way that is open to traffic during non-working hours. Construction equipment and materials are not to be stored within the street right-of-way that is outside the project limits as shown on the approved plan.

Traffic Control will be measured as a lump sum. Payment for the Traffic Control is full compensation for constructing, assembling, painting, hauling, erecting, re-erecting, maintaining, restoring, and removing traffic signs, drums, barricades, and similar control devices. Electronic message signs shall be paid for as a separate bid item.

Contact Yang Tao, Traffic Engineering Division, 266-4815, with any questions concerning these traffic control specifications.

ARTICLE 107.8 NOTIFICATION WHEN CLOSING STREET

The Contractor shall coordinate the removal and replacement of existing traffic control or street name signs with the Wisconsin Department of Transportation a minimum of seventy-two (72) hours in advance of starting work unless required otherwise by the WisDOT Permit to Work on Highway Right-of-Way.

ARTICLE 108.2: PERMITS

The City of Madison has obtained a City of Madison Erosion Control Permit.

The City of Madison will obtain a permit from the Wisconsin Department of Transportation for performing work on USH 51/Stoughton Road. Work may not proceed until this permit has been obtained. The Contractor shall comply with any and all provisions and conditions of approval of the WisDOT permit.

The Contractor shall meet the conditions of the permits by properly installing and maintaining the erosion control measures shown on the plans, specified in these Special Provisions, or as directed by the Construction Engineer or his designees. This work will be paid for under the appropriate contract bid items or, if appropriate items are not included in the contract, shall be paid for as Extra Work. A copy of the permit is available at the City of Madison, Engineering Division office.

ARTICLE 109.2: PROSECUTION OF THE WORK

The Contractor shall begin operations on or after **July 7, 2014** and will have **TWENTY-FIVE (25) calendar days** to complete the project. All work must be completed by September 30, 2014. No work may take place between noon on Friday, August 29, 2014 and 7:00 a.m. on Tuesday, September 2, 2014. The Contractor shall notify the Engineer a minimum of two weeks prior to the anticipated start of work date.

The Contractor may elect to start of this project any time on or after July 7, 2014; but, once construction has started, it shall continue without interruption until completion. The southbound turn lane, from Stoughton Road (STH 51) to eastbound Voges Road, between Sta. 14+25 and Sta. 16+43 may be closed for no more than 5 consecutive days to allow for the construction of the concrete pavement and concrete curb and shall not be closed on either Saturday or Sunday.

The Contractor shall also notify the City Engineer (contact the Construction Engineer at 266-9091) a minimum of 48 hours prior to the desired start date. The Engineer shall schedule a pre-construction meeting prior to the start of construction.

ARTICLE 210.1(d): STREET SWEEPING

When required, either by the erosion control plan or the Construction Engineer, the Contractor shall perform mechanical street sweeping on all streets or paved surfaces affected by construction equipment, hauling or related construction activities that result in mud tracking or siltation. Mechanical street sweeping shall be completed as directed by the Construction Engineer and shall remove all loose material to the satisfaction of the Construction Engineer. Depending on site conditions, construction activities, and hauling methods utilized by the Contractor mechanical street sweeping may be required multiple times throughout the day with an absolute minimum that all streets are clean at the end of the work day.

BID ITEM 40402 NON-REINFORCED CONCRETE PAVEMENT, 9-INCH, HES

Non-reinforced Concrete Pavement, 9-Inch, HES shall be constructed of High Early Strength Concrete

BID ITEM 90001 1 ¼" DOWEL BARS

DESCRIPTION

1 ¼" DOWEL BARS shall be installed in accordance with the appropriate sections of the State of Wisconsin Department of Transportation Standard Specifications.

BID ITEM 90002 TYPE "G" 30-INCH, SLOPED, CONCRETE CURB AND GUTTER-HES

If it is necessary to transition from Type "G" 30-Inch, Sloped, Concrete Curb and Gutter-HES to match the existing curb, the transition shall occur within five (5) feet of end of the new curb and shall be paid for as BID ITEM 90002 Type "G" 30-Inch, Sloped, Concrete Curb and Gutter-HES

The width of the Type "G" 30-Inch, Sloped, Concrete Curb and Gutter-HES may vary from a 24-inch flag to approximately a 48-inch flag. There shall be no additional compensation for the additional width.

Type "G" 30-Inch, Sloped, Concrete Curb and Gutter shall be constructed using High Early Strength Concrete.

All work related to this item shall be in accordance with S.D.D.8 D 1-17, included in the plan set, and the Wisconsin Department of Transportation Standard Specifications.

BID ITEM 90030 REMOVE FLUME

DESCRIPTION

This work shall include the removal of the existing asphalt flume and hauling and disposing of the material.

METHOD OF MEASUREMENT

REMOVE FLUME shall be measured as a lump sum.

BASIS OF PAYMENT

Payment for REMOVE FLUME is full compensation for removing the existing material, hauling the removed material off-site, and disposing of the material.

BID ITEM 90031 ASPHALT FLUME

DESCRIPTION

This work shall include construction of an asphalt flume in accordance with Section 620 of the latest edition of the State of Wisconsin Department of Transportation Standard Specifications and S.D.D. 8 D-4. A copy of S.D.D. 8 D-4 is included in the plan.

METHOD OF MEASUREMENT

ASPHALT FLUME shall be measured in place by the square yard of surface area.

BASIS OF PAYMENT

Payment for ASPHALT FLUME is full compensation for preparing the foundation; for providing all materials; for hauling, placing, consolidating, shaping, finishing, curing, and protecting the asphalt; and for disposing of surplus materials.

APPLICATION/PERMIT TO WORK ON HIGHWAY RIGHT-OF-WAY

Wisconsin Department of Transportation (WisDOT)

DT1812 5/2012 s. 86.07(2), 86.16 and other applicable Wis. Stats.

| | | | | |
|---|--|--|-----------------------------------|---|
| 1. Applicant Name and Address City of Madison Engineering Division Room 115 210 Martin Luther King Jr Blvd Madison, WI 53703 | | 2. Work Start Date 7/7/14 | 3. Work Finish Date* 9/30/2014 | 4. Highway (Check all that apply) <input type="checkbox"/> WIS _____ <input checked="" type="checkbox"/> US 51 _____ <input type="checkbox"/> Interstate _____ <input type="checkbox"/> _____ |
| 6. Is the work area near a survey monument? (If yes, email geodetic@dot.wi.gov or call 866-568-2852.) <input type="checkbox"/> Yes <input checked="" type="checkbox"/> No | | 5. Work Location (Check/list all that apply) <input type="checkbox"/> Town <input type="checkbox"/> Village <input checked="" type="checkbox"/> City of: _____ Madison County: Dane | | |
| 7. Trans 401 project designation? (For all Major projects, provide a formal erosion control plan with this application.) <input checked="" type="checkbox"/> Minor <input type="checkbox"/> Major | | 8. Location Description (Town, range, section, ¼ sect; provide plat map or location sketch) Town 7 Range 10 Sec. 27 Nw 1/4 | | |
| 9. Are any environmental permits, certifications or approvals required from other regulatory agencies, including tribal governments? (If yes, provide a copy of each item. If no, proof of agency coordination may still be required with this application. Click on environmental coordination for more information.) <input checked="" type="checkbox"/> Yes <input type="checkbox"/> No | | 10. Work Type (Check all that apply) <input type="checkbox"/> Access management <input type="checkbox"/> Crash investigation/cleanup <input type="checkbox"/> Drainage: Culverts/tiles <input type="checkbox"/> Drainage: Grading/riprap <input type="checkbox"/> Drainage: Storm Sewer <input type="checkbox"/> Environmental assessment <input type="checkbox"/> Harvesting nature products <input type="checkbox"/> Hazmat: Cleanup/remediation <input type="checkbox"/> Hazmat: Monitoring wells <input type="checkbox"/> Invasive species assessment <input checked="" type="checkbox"/> Landscaping <input type="checkbox"/> Soil borings <input type="checkbox"/> Surveying <input checked="" type="checkbox"/> Other: <u>extend turn lane</u> | | |
| 11. Vegetation Management (Check all that apply) <input type="checkbox"/> Mow <input type="checkbox"/> Chemically treat <input type="checkbox"/> Prune <input type="checkbox"/> Cut and/or trim <input type="checkbox"/> Plant <input type="checkbox"/> Remove | | 12. Work Zone Description (Check all that apply) <input type="checkbox"/> Not applicable <input type="checkbox"/> Full road closure: detour** <input type="checkbox"/> Full road closure: temporary <input checked="" type="checkbox"/> Lane closure: without flagging <input type="checkbox"/> Lane closure: with flagging <input checked="" type="checkbox"/> Lane encroachment (2 feet or less) <input type="checkbox"/> Intersection/roundabout <input type="checkbox"/> Shoulder/parking lane closure Freeway/expressway location <input type="checkbox"/> Off shoulder: < 30' off white line <input type="checkbox"/> Off shoulder: ≥ 30' off white line <input type="checkbox"/> Near right-of-way line or fence Non-Freeway/expressway location <input checked="" type="checkbox"/> Off shoulder: < 15' off white line <input type="checkbox"/> Off shoulder: ≥ 15' off white line <input checked="" type="checkbox"/> Back of curb: < 2' behind <input type="checkbox"/> Back of curb: ≥ 2' behind | | |
| 13. Provide Detailed Description of How Work Will Be Accomplished (Use additional pages if needed. Provide work plans and specifications as needed.) The existing concrete curb and pavement will be removed. New concrete curb and pavement will be constructed to create a longer queue for the EB turn lane from SB USH 51 to Voges Rd. The length of the concrete corrugated median will also be increased. The longer queue was required by WIS/DOT at the time that the area east of USH 51 and south of USH 12 & 18 was platted. The attached plan shows the project location and limits. The contractor will be allowed to start the project 7/7/14, or later, but all work must be completed by 9/30/14. The contractor will have 25 calendar days to complete the work. | | | | |



It is understood and agreed that approval is subject to the applicant's full compliance with the pertinent Statutes, as well as any codes, rules, regulations, and permit requirements of other jurisdictional agencies. The applicant shall also comply with all permit provisions, superimposed notes, and detail drawings that WisDOT may add. Any alteration of this form by the applicant is prohibited and may be cause to revoke this permit. When approved, the permit does not transfer any land; nor give, grant or convey any land right, right in land, nor easement in WisDOT right-of-way. It is not assignable or transferrable.

 (Main Contractor Company Name, If applicable)

 (Contractor Representative/Title) (Office Telephone Number)

 (Cell Telephone Number) (Email Address)

x Robert Phillips 3/25/14
 (Applicant or Authorized Representative) (Date)
 (If Computer-filled, Brush Script Font)

Robert Phillips City Engineer
 (Printed Name) (Title)

608-266-4751 rphillips@cityofmadison.com
 (Telephone Number) (Email Address)

***NOTE:** If the work described is not completed by the "Work Finish Date" specified, this permit is null and void and the work shall not be completed unless authorized through a subsequent permit or an approved time extension. **ANY PERMIT ISSUED IS REVOCABLE.**

For Official Wisconsin DOT Use Only – Do Not Write Below

| | | |
|---|--|--|
| <input type="checkbox"/> PERMITTEE SHALL NOTIFY THE WISDOT REPRESENTATIVE LISTED BELOW 3 DAYS BEFORE STARTING ANY WORK: Region contact, title, office address, telephone number, and email address _____ _____ _____ | <input type="checkbox"/> See Supplemental Permit Provisions (Page 4) <input type="checkbox"/> Special Permit Provisions Also Included <input type="checkbox"/> Lane Closure System notification required <input type="checkbox"/> Insurance or performance bond required <input type="checkbox"/> Other regulatory agency permits not required <input type="checkbox"/> ** DT1479 , "Application/Permit to Detour State Highway Traffic" required <input type="checkbox"/> This permit is issued in conjunction with: _____ <input type="checkbox"/> This permit voids and supersedes permit(s): #_____, Issued _____ <input type="checkbox"/> | Date Application Received Date Application Complete Permit Issuance Date Permit Expiration Date Permit Extension Date Permit Number |
|---|--|--|

(WisDOT Authorized Representative Signature – If filled via computer, Brush Script font)

INDEMNIFICATION

The Applicant shall save and hold the State, its officers, employees, agents, and all private and governmental contractors and subcontractors with the State under Chapter 84 Wisconsin Statutes, harmless from actions of any nature whatsoever (including any by Applicant itself) which arise out of, or are connected with, or are claimed to arise out of or be connected with any of the work done by the Applicant, or the construction or maintenance of facilities by the Applicant, pursuant to this permit or any other permit issued by the State for location of property, lines or facilities on highway right-of-way, (1) while the Applicant is performing its work, or (2) while any of the Applicant's property, equipment, or personnel, are in or about such place or the vicinity thereof, or (3) while any property constructed, placed or operated by or on behalf of Applicant remains on the State's property or right-of-way pursuant to this permit or any other permit issued by the State for location of property, lines or facilities on highway right-of-way; including without limiting the generality of the foregoing, all liability, damages, loss, expense, claims, demands and actions on account of personal injury, death or property loss to the State, its officers, employees, agents, contractors, subcontractors or frequenters; to the Applicant, its employees, agents, contractors, subcontractors, or frequenters; or to any other persons, whether based upon, or claimed to be based upon, statutory (including, without limiting the generality of the foregoing, worker's compensation), contractual, tort, or whether or not caused or claimed to have been caused by active or inactive negligence or other breach of duty by the State, its officers, employees, agents, contractors, subcontractors or frequenters; Applicant, its employees, agents, contractors, subcontractors or frequenters; or any other person. Without limiting the generality of the foregoing, the liability, damage, loss, expense, claims, demands and actions indemnified against shall include all liability, damage, loss, expense, claims, demands and actions for damage to any property, lines or facilities placed by or on behalf of the Applicant pursuant to this permit or any other permit issued by the State for location of property, lines or facilities on highway right-of-way in the past or present, or that are located on any highway or State property or right-of-way with or without a permit issued by the State, for any loss of data, information, or material; for trademark, copyright or patent infringement; for unfair competition or infringement of personal or property rights of any kind whatever. The Applicant shall at its own expense investigate all such claims and demands, attend to their settlement or other disposition, defend all actions based thereon and pay all charges of attorneys and all other costs and expenses of any kind arising from any such liability, damage, loss, claims, demands and actions.

Any transfer, whether voluntary or involuntary, of ownership or control of any property constructed, placed or operated by or on behalf of the Applicant that remains on the State's property or right-of-way pursuant to this permit shall not release Applicant from any of the indemnification requirements of this permit, unless the State is notified of such transfer in writing. Any acceptance by any other person or entity, whether voluntary or involuntary, of ownership or control of any property constructed, placed or operated by or on behalf of the Applicant that remains on the State's property or right-of-way pursuant to this permit, shall include acceptance of all of the indemnification requirements of this permit by the other person or entity receiving ownership or control.

Notwithstanding the foregoing, a private contractor or subcontractor with the State under Chapter 84 Wisconsin Statutes, that fails to comply with sections 66.0831 and 182.0175 Wisconsin Statutes (2009-2010), remains subject to the payment to the Applicant of the actual cost of repair of intentional or negligent damage by the contractor or subcontractor to any property, lines or facilities placed by or on behalf of the Applicant pursuant to this permit or any other permit issued by the State for location of property, lines or facilities on highway right-of-way, and remains subject to payment to the Applicant for losses due to personal injury or death resulting from negligence by the contractor or subcontractor.

Notwithstanding the foregoing, if the State, or its officers, employees and agents, fail to comply with sections 66.0831 and 182.0175 Wisconsin Statutes (2009-2010), the State or its officers, employees and agents, remain subject to the payment to the Applicant of the actual cost of repair of willful and intentional damage by the State, or its officers, employees and agents, to any property, lines or facilities placed by or on behalf of the Applicant pursuant to this permit or any other permit issued by the State for location of property, lines or facilities on highway right-of-way, and remain subject to payment to the Applicant for losses due to personal injury or death resulting from negligence by the State, its officers, employees and agents.

No indemnification of private contractors or subcontractors with the State under Chapter 84 Wisconsin Statutes, shall apply in the event of willful and intentional damage by such private contractors or subcontractors to the property, lines and facilities of the Applicant located on the highway right-of-way pursuant to this permit or any other permit issued by the State for the location of property, lines or facilities on highway right-of-way.

PERMIT PROVISIONS AND CONDITIONS OF APPROVAL

Pursuant to the Wisconsin Statutes and once approved by WisDOT, this permit allows performance of the specific work described over which WisDOT has permit authority. The following provisions and any supplemental and/or special provisions shall govern.

1. Warning signs, devices and methods shall be in place and fully functional prior to the commencement of any of the permitted work within highway right-of-way, and shall protect the public until all permit-associated work is complete. Warning signs and devices shall conform to the appropriate sizes, designs and configurations specified within the [Wisconsin Manual on Uniform Traffic Control Devices](#), current edition. The permittee shall be responsible to provide and maintain at least the quantity of signs and devices therein described, but to also supplement those with additional signs, devices and flaggers as are necessary to functionally protect persons and property from injury or damage at all times and under all conditions, including changed or changing conditions.
2. The permittee shall regulate vehicles, equipment and materials to assure consistently safe conditions. Particular care shall be exercised at all times to assure a safe traffic environment at and near the work site. These requirements pertain to both ongoing work operations and any idle periods. Any discovered violation of this permit – particularly any failure to maintain a safe traffic and public environment – will require the permittee to immediately cure the discovered fault, may result in a WisDOT order to stop further work, and may result in permit revocation and expulsion from the highway right-of-way.
3. Holiday and seasonal work restrictions apply to the permitted work. The permittee shall review these restrictions with the WisDOT Region Office identified on this permit.
4. The permitted work shall be coordinated, and in no case interfere, with any ongoing highway improvement project.
5. Blasting within the highway right-of-way is expressly prohibited, unless specifically authorized by WisDOT.
6. The permittee shall provide the supervisor of the permitted work with a copy of this permit and is responsible to assure that the supervisor is familiar with all permit details and requirements. A complete copy of the permit shall be in the possession of the work force at all times that work is being performed within the right-of-way. The permittee shall be responsible for failure to comply with any part of this permit.
7. It shall be the responsibility of the permittee to determine the location of, and protect or cause to protect from any damage, any existing facilities in the area affected by the permitted work. All notifications to others are likewise a responsibility of the permittee.

PERMIT PROVISIONS AND CONDITIONS OF APPROVAL

8. All operations shall be performed without obstructing or closing any part of any traffic lane or fully closing any road unless specifically authorized by WisDOT.
9. The permittee shall be responsible for all costs of constructing and maintaining the permitted facilities. The permitted facilities shall, if necessary, be altered at the expense of the permittee to facilitate alteration, improvement, safety control, or maintenance of the highway as may be ordered by WisDOT.
10. The permit authorizes only the described work of and for the permittee indicated on this permit. It does not grant authority for the facilities of any other, either by present or future installation.
11. Any disturbance to, operation within, or use of a highway median is expressly prohibited, unless specifically authorized by WisDOT.
12. Construction methods and restorations shall be in accordance with applicable parts of [WisDOT's Standard Specifications for Road and Bridge Construction](#), current edition.
13. The permittee shall assure that proper erosion control best management practices (BMPs) are implemented prior to and at all times during work operations. The permittee shall also be responsible for providing and maintaining erosion control BMPs to protect all restored areas upon completion of the permitted work until the replacement vegetation achieves sustained growth.
14. No direct access for the installation, maintenance or repair of the permitted facility shall be obtained from the travel lane or shoulder of any freeway, or from any interchange ramp, unless specifically authorized by WisDOT or if needed due to an emergency. In the latter event, the permittee shall contact the Wisconsin State Patrol and the WisDOT Region Office indicated on this permit as soon as possible.
15. The permitted facilities shall be installed in the location specified in this permit. Any part of the facility found to be located otherwise shall be subject to correction by WisDOT at the permittee's sole cost. Any facility or part thereof which is located other than as the permit defines does so at the permittee's sole risk. Accordingly, if the same is undetected or is suffered to remain in variance to the permit, the permittee agrees to hold the State, its employees, agents and officers harmless and free of any cost, claim or liability associated with any accidental damage to such facility that may result from a highway construction, maintenance, traffic control, or right-of-way management function.
16. All highway facilities disturbed by the permitted work or associated operation shall be promptly restored. If restoration is not done voluntarily, without delay, WisDOT may issue a notice setting a specific time by which the restoration must be complete. If the permittee fails to satisfactorily complete the restoration within the time established, WisDOT shall arrange for the restoration to be completed and bill the permittee accordingly. The permittee agrees to pay any and all costs of said restoration.
17. Any brush, trash or waste materials resulting from the permitted work shall be removed from the highway right-of-way. Disposal of such materials off the right-of-way shall be in accordance with applicable solid waste disposal regulations.
18. Upon completion of the work and restorations, written notice shall be sent via regular mail or email within **10 calendar days** to the authorized WisDOT representative who approved the permit.
19. Operations and safety precautions pertinent to any trenching, tunneling, or excavation activities shall comply with requirements of all applicable regulations and codes, including, but not limited to, those of the [Wisconsin Department of Workforce Development](#), [Workplace Safety Institute](#).
20. Smooth and finished slopes shall be constructed at any location where any regraded portion of the highway right-of-way meets the lands of the adjacent property owner.
21. Any excavation authorized within the limits of highway pavement or shoulder areas shall be backfilled with suitable granular material, placed in lifts or layers 12 inches or less each in depth, and mechanically compacted to meet the appropriate density as specified in [WisDOT's Standard Specifications for Road and Bridge Construction](#), current edition. Water jetting to facilitate mechanical compaction is prohibited. Any subsequent heavings, settlements, or other faultings attributable to the permitted work shall be repaired to WisDOT's satisfaction at the permittee's expense. Temporary sheeting and shoring shall be used as necessary to prevent trench and tunnel cave-ins.
22. Any curb, gutter, sidewalk, driveway, gravel base, ballast or shoulder material, or other element of the highway right-of-way or facility disturbed by the permitted works shall be restored in kind to the qualities, grades, compactions and conditions specified in [WisDOT's Standard Specifications for Road and Bridge Construction](#), current edition.
23. Any turfed area of the right-of-way disturbed by the permitted work shall be restored with fine-graded topsoil having a depth of not less than 4 inches, and reseeded to perennial grass or sodded to WisDOT's satisfaction.
24. If, in the opinion of WisDOT, the permitted work or facilities obstruct highway drainage or in any other manner adversely affect the maintenance or operation of the highway, the permittee shall, upon notice, cure the fault as directed and restore the right-of-way to WisDOT's satisfaction.
25. For bored or augered installations under any freeway, all vehicles, equipment and materials shall be outside the right-of-way fence including the location of any bore pits. If authorized by WisDOT to work within the freeway right-of-way, vehicles, equipment or materials shall not be any closer to any freeway travel lane than the bore pits. All bore pits shall be located outside the clear zone and as close to the right-of-way fence as possible.
26. The permittee is responsible to assure that the site of construction is secure against any hazard to the public, both when the site is attended and during off-hours, holidays, and nighttime hours when the site is unattended.
27. The permittee should be aware that future upgrading of the highway may require the adjustment of part or all of the permitted facility, at the sole cost of the permittee, in order to conform to WisDOT's [Utility Accommodation Policy](#).
28. The covers of manholes, shut-off and regulator valves, and like facilities shall be adjusted to the level of the immediately adjacent grades.
29. No vehicle, equipment or material relating to the permitted work shall be parked or stored within the limits of the non-freeway highway right-of-way except such as are actively engaged in the work operation.
30. No greater length of trench shall be open at any time than is necessary to maintain essential progress of the work.
31. The permittee shall comply with appropriate laws, rules, policies, etc. when within tribal or federal lands. When on WisDOT right-of-way, the permittee shall provide documentation as needed to prove compliance or coordination with the following agencies:
 - Wisconsin Historical Society to avoid/mitigate any potential cultural resource (archeological, historical, burial site, etc.) impacts per [§44.40](#).
 - Department of Natural Resources to avoid/mitigate any potential storm water runoff, site erosion, wetland, waterway and endangered/threatened species impacts.

SUPPLEMENTAL PERMIT PROVISIONS

The following checked provisions also apply to this permit:

GENERAL

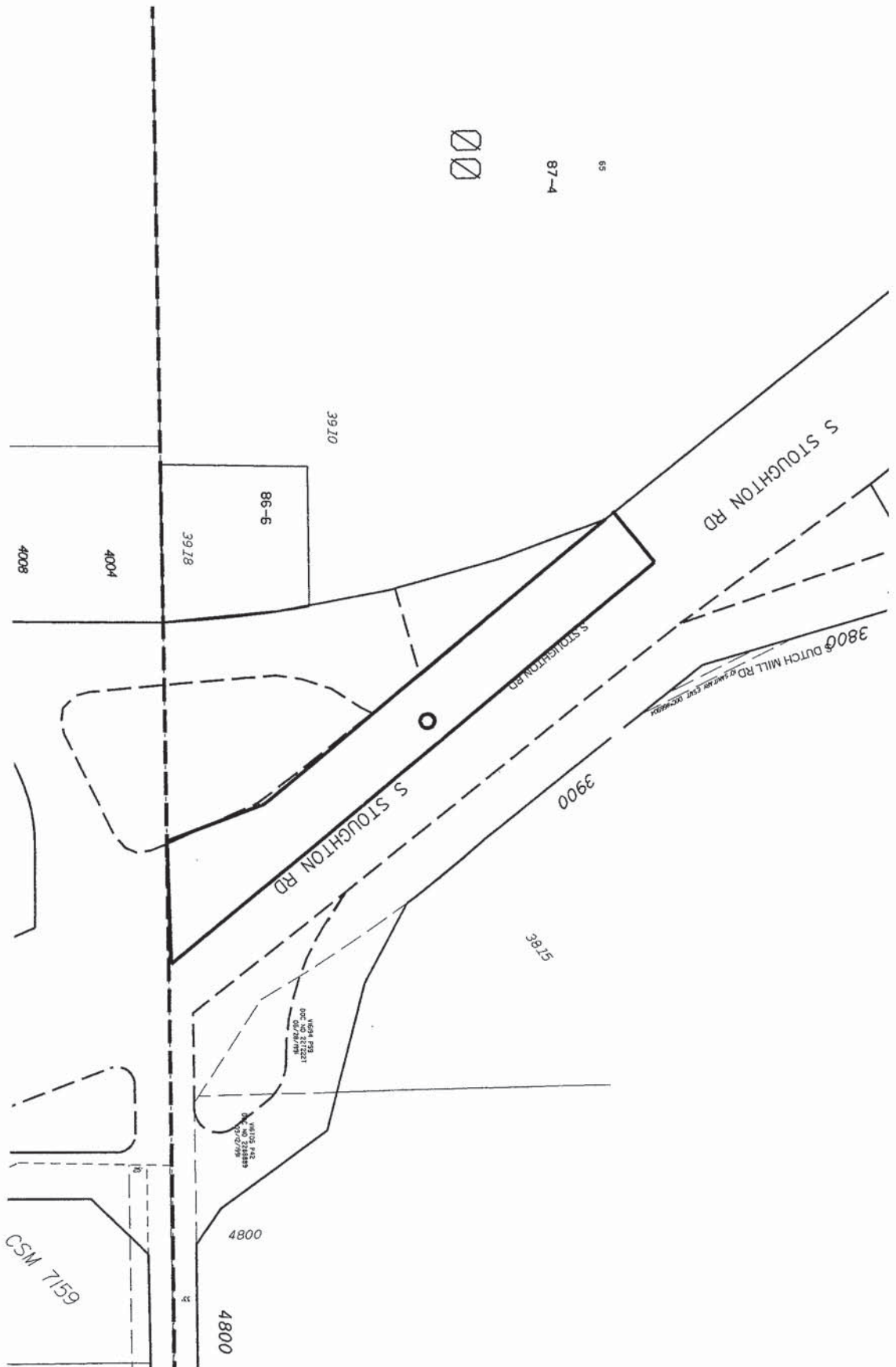
- 1. The permittee shall contact the WisDOT Region Office at the address and telephone number indicated on this permit to arrange for a Region representative to inspect the work site. No work under this permit shall be accomplished prior to his/her arrival.
- 2. The permittee shall notify the WisDOT Region Office at the address and telephone number indicated on this permit prior to the completion of the permitted work to enable a Region representative ample opportunity to inspect the work before the permittee's employees or contractor leaves the site.
- 3. Construction by open-trench methods is authorized only if the permitted installation can be accomplished in advance of the highway paving. If this cannot be accomplished, the permitted facility shall be bored or dry augered.
- 4. At any location where open-trench installation across highway pavement is authorized, the surface shall be saw-cut full depth to enable it to be restored with smooth joints. Restoration of concrete pavement shall be to the nearest joint.
- 5. All excavations shall be backfilled in accordance with the attached detail.
- 10. No trees/vegetation shall be cut, trimmed or damaged to facilitate the installation or maintenance of the permitted facility except as authorized by the owner of such tree/vegetation. See Wisconsin Statutes [86.03\(2\)](#), [\(4\)](#), [86.16\(3\)](#), and [182.017\(5\)](#).
- 11. To prevent Oak Wilt Disease from spreading, oak trees shall not be cut or pruned between April 15 and October 15 unless a thick coat of asphalt base tree paint is applied immediately after **any** cut, pruning wound, or abrasion made between those dates. The permittee shall adhere to any applicable laws, including local ordinances if they are stricter than WisDOT specifications. Any roots encountered, either during grading or trenching, shall have the exposed ends cut cleanly with suitable pruning tools immediately after they have been exposed.

TREE & VEGETATION MANAGEMENT

- 6. Trees/vegetation may be planted only in such locations and in such species as indicated on the plans included and approved with this permit, or as specified in the field by WisDOT.
- 7. The permittee shall maintain all plantings according to the attached special permit provisions.
- 8. No sign or marker identifying the plantings may be placed within the highway right-of-way limits.
- 9. WisDOT accepts no responsibility for loss that may occur to the plantings. The permittee shall be fully aware that the plantings are subject to:
 - Mortality
 - Thinning
 - Normal hazards due to maintenance operations, snow control, and public utility installation or alteration
 - Trimming or removal, if or when the plantings cause restrictions to sight distance or hazardous snow/ice conditions on the highway
 - Destruction, if highway reconstruction is done
 - Partial or complete abandonment or obliteration, or return to private ownership, if future changes in highway location are made
- 12. Remove all stumps, branches, logs, and other debris resulting from the cutting and trimming operations and dispose of such materials off the right-of-way. The permittee may also dispose of trees by giving them to the adjacent property owner(s). The storage location shall be on the landowner's property, at a location approved by landowner. The permittee shall comply with any applicable laws that may regulate the sale, transport, or pruning/cutting of trees.
- 13. Cut trees flush with the ground. Any remaining stump shall not interfere with mowing operations.
- 14. Cut trees may be chipped and used for mulch on the right-of-way in a layer not exceeding two inches.
- 15. Trim only the trees/vegetation necessary to provide safe clearances or by special provisions. Non-target trees/vegetation shall not be damaged. Clear cutting is prohibited.
- 16. The trees/vegetation to be removed shall be surveyed and inspected jointly with a WisDOT representative prior to starting any work on the highway right-of-way.
- 17. Treat all deciduous tree stumps with a herbicide approved for this use. Evergreen tree stumps shall not be treated.

RAILROAD CROSSING WORK

- 18. The permittee shall also fill out form [DT1479](#), "APPLICATION/PERMIT TO DETOUR STATE HIGHWAY TRAFFIC". This DT1812 permit shall be in effect only if WisDOT approves the corresponding DT1479 permit.
- 19. The permittee agrees to comply with the attached "Special Provisions for Railroad Crossing Work."



Legend

- Denotes Boring Location (approximate)



Notes

1. Soil boring performed by Badger State Drilling in December 2012

| | | | | | |
|--------|------------|-------------|-----------|--|--|
| DWN: - | APP'D: MNS | Date: 12/12 | C12075-41 | | SOIL BORING LOCATION PLAN South Stoughton Road Madison, Wisconsin |
| | | | | | |



LOG OF SOIL TEST PIT

Project South Stoughton Road
350'N of Voges Road, in Median
 Location Madison, Wisconsin

Pit No. 1
 Surface Elevation _____
 Job No. C12075-41
 Sheet 1 of 1

2921 PERRY STREET, MADISON, WIS. 53713 (608) 288-4100, FAX (608) 288-7887

| SAMPLE | | | | | VISUAL CLASSIFICATION and Remarks | SOIL PROPERTIES | | | | |
|--------|------|--------------|-------|----|--------------------------------------|--|---------------------|---|----|----|
| No. | TYPE | Rec (in.) | Moist | N | | Depth (ft) | qu (qa) (tsf) | W | LL | PL |
| | | | | | 0 | FILL: Dark Brown to Black Silty Topsoil with Sand to 0.5' | | | | |
| 1 | █ | 18 | M | 38 | 0.5 | Brown Silty Sand with Gravel to 3' | | | | |
| | | | | | 5 | Stiff, Gray and Brown Lean CLAY (CL) | | | | |
| 2 | █ | 18 | M | 6 | 5 | (1.5) | | | | |
| | | | | | 8 | Loose, Brown Fine to Medium SAND, Little Silt and Clay (SP-SM/SP-SC) | | | | |
| 3 | █ | 18 | M | 8 | 8 | | | | | |
| | | | | | 10 | Loose to Medium Dense, Brown Fine to Medium SAND, Trace Silt and Gravel (SP) | | | | |
| 4 | █ | 18 | M | 8 | 10 | | | | | |
| | | | | | 15 | End Boring at 15 ft | | | | |
| 5 | █ | 18 | W | 20 | 15 | Borehole backfilled with bentonite chips | | | | |
| | | | | | 20 | | | | | |

| WATER LEVEL OBSERVATIONS | | | | | GENERAL NOTES | | | | |
|---|-------|-------|-----------------------------|---------|---------------|------------|--------|---------|--------|
| While Excavating | ▽ | 13.2' | Upon Completion of Drilling | _____ | Start | 12/7/12 | End | 12/7/12 | |
| Time After Excavating | _____ | _____ | | 10 min. | Driller | Badger | Chief | MC | CME-55 |
| Depth to Water | _____ | _____ | | 13.2' ▼ | Logger | GM | Editor | ESF | |
| Depth to Cave in | _____ | _____ | | _____ | Equip. Used: | 2 1/4" HSA | | | |
| The stratification lines represent the approximate boundary between soil types and the transition may be gradual. | | | | | | | | | |

SECTION E: BIDDERS ACKNOWLEDGEMENT

**STOUGHTON ROAD/VOGES ROAD INTERSECTION IMPROVEMENT
ASSESSMENT DISTRICT - 2014
CONTRACT NO. 7002**

Bidder must state a Unit Price and Total Bid for each item. The Total Bid for each item must be the product of quantity, by Unit Price. The Grand Total must be the sum of the Total Bids for the various items. In case of multiplication errors or addition errors, the Grand Total with corrected multiplication and/or addition shall determine the Grand Total bid for each contract. The Unit Price and Total Bid must be entered numerically in the spaces provided. All words and numbers shall be written in ink.

1. The undersigned having familiarized himself/herself with the Contract documents, including Advertisement for Bids, Instructions to Bidders, Form of Proposal, City of Madison Standard Specifications for Public Works Construction - 2014 Edition thereto, Form of Agreement, Form of Bond, and Addenda issued and attached to the plans and specifications on file in the office of the City Engineer, hereby proposes to provide and furnish all the labor, materials, tools, and expendable equipment necessary to perform and complete in a workmanlike manner the specified construction on this project for the City of Madison; all in accordance with the plans and specifications as prepared by the City Engineer, including Addenda to the Contract Nos. _____ through _____ issued thereto, at the prices for said work as contained in this proposal. (Electronic bids submittals shall acknowledge addendum under Section E and shall not acknowledge here)
2. If awarded the Contract, we will initiate action within seven (7) days after notification or in accordance with the date specified in the contract to begin work and will proceed with diligence to bring the project to full completion within the number of work days allowed in the Contract or by the calendar date stated in the Contract.
3. The undersigned Bidder or Contractor certifies that he/she is not a party to any contract, combination in form of trust or otherwise, or conspiracy in restraint of trade or commerce or any other violation of the anti-trust laws of the State of Wisconsin or of the United States, with respect to this bid or contract or otherwise.
4. I hereby certify that I have met the Bid Bond Requirements as specified in Section 102.5. *(IF BID BOND IS USED, IT SHALL BE SUBMITTED ON THE FORMS PROVIDED BY THE CITY. FAILURE TO DO SO MAY RESULT IN REJECTION OF THE BID).*
5. I hereby certify that all statements herein are made on behalf of _____ (name of corporation, partnership, or person submitting bid) a corporation organized and existing under the laws of the State of _____ a partnership consisting of _____; an individual trading as _____; of the City of _____ State of _____; that I have examined and carefully prepared this Proposal, from the plans and specifications and have checked the same in detail before submitting this Proposal; that I have fully authority to make such statements and submit this Proposal in (its, their) behalf; and that the said statements are true and correct.

SIGNATURE

TITLE, IF ANY

Sworn and subscribed to before me this _____ day of _____, 20_____.

(Notary Public or other officer authorized to administer oaths)
My Commission Expires _____

Bidders shall not add any conditions or qualifying statements to this Proposal.

SECTION F: DISCLOSURE OF OWNERSHIP & BEST VALUE CONTRACTING

STOUGHTON ROAD/VOGES ROAD INTERSECTION IMPROVEMENT ASSESSMENT DISTRICT - 2014 CONTRACT NO. 7002

State of Wisconsin
Department of Workforce Development
Equal Rights Division
Labor Standards Bureau

Disclosure of Ownership

| | | | |
|---|------|-------------|----------|
| <p>Notice required under Section 15.04(1)(m), Wisconsin Statutes. The statutory authority for the use of this form is prescribed in Sections 66.0903(12)(d) and 103.49(7)(d), Wisconsin Statutes. The use of this form is mandatory. The penalty for failing to complete this form is prescribed in Section 103.005(12), Wisconsin Statutes. Personal information you provide may be used for secondary purposes.</p> | | | |
| <p>(1) On the date a contractor submits a bid to or completes negotiations with a state agency or local governmental unit, on a project subject to Section 66.0903 or 103.49, Wisconsin Statutes, the contractor shall disclose to such state agency or local governmental unit the name of any "other construction business", which the contractor, or a shareholder, officer or partner of the contractor, owns or has owned within the preceding three (3) years.</p> <p>(2) The term "other construction business" means any business engaged in the erection, construction, remodeling, repairing, demolition, altering or painting and decorating of buildings, structures or facilities. It also means any business engaged in supplying mineral aggregate, or hauling excavated material or spoil as provided by Sections 66.0903(3), 103.49(2) and 103.50(2), Wisconsin Statutes.</p> <p>(3) This form must ONLY be filed, with the state agency or local governmental unit that will be awarding the contract, if both (A) and (B) are met.</p> <p>(A) The contractor, or a shareholder, officer or partner of the contractor: (1) Owns at least a 25% interest in the "other construction business", indicated below, on the date the contractor submits a bid or completes negotiations. (2) Or has owned at least a 25% interest in the "other construction business" at any time within the preceding three (3) years.</p> <p>(B) The Wisconsin Department of Workforce Development (DWD) has determined that the "other construction business" has failed to pay the prevailing wage rate or time and one-half the required hourly basic rate of pay, for hours worked in excess of the prevailing hours of labor, to any employee at any time within the preceding three (3) years.</p> | | | |
| Other Construction Business | | | |
| Not Applicable <input type="checkbox"/> | | | |
| Name of Business | | | |
| Street Address or P O Box | City | State | Zip Code |
| Name of Business | | | |
| Street Address or P O Box | City | State | Zip Code |
| Name of Business | | | |
| Street Address or P O Box | City | State | Zip Code |
| <p>I hereby state under penalty of perjury that the information, contained in this document, is true and accurate according to my knowledge and belief.</p> | | | |
| Print the Name of Authorized Officer | | | |
| Signature of Authorized Officer | | Date Signed | |
| Name of Corporation, Partnership or Sole Proprietorship | | | |
| Street Address or P O Box | City | State | Zip Code |

If you have any questions call (608) 266-0028

ERD-7777-E (R. 09/2003)

**STOUGHTON ROAD/VOGES ROAD INTERSECTION IMPROVEMENT
ASSESSMENT DISTRICT - 2014
CONTRACT NO. 7002**

Best Value Contracting

1. The Contractor shall indicate the non-apprenticeable trades used on this contract.

2. Madison General Ordinance (M.G.O.), 33.07(7), does provide for some exemptions from the active apprentice requirement. Apprenticeable trades are those trades considered apprenticeable by the State of Wisconsin. Please check applicable box if you are seeking an exemption.

- Contractor has a total skilled workforce of four or less individuals in all apprenticeable trades combined.
- No available trade training program; The Contractor has been rejected by the only available trade training program, or there is no trade training program within 90 miles.
- Contractor is not using an apprentice due to having a journey worker on layoff status, provided the journey worker was employed by the contractor in the past six months.
- First-time Contractor on City of Madison Public Works contract requests a onetime exemption but intends to comply on all future contracts and is taking steps typical of a "good faith" effort.
- Contractor has been in business less than one year.
- Contractor doesn't have enough journeyman trade workers to qualify for a trade training program in that respective trade

3. The Contractor shall indicate on the following section which apprenticeable trades are to be used on this contract. Compliance with active apprenticeship, to the extent required by M.G.O. 33.07(7), shall be satisfied by documentation from an applicable trade training body; an apprenticeship contract with the Wisconsin Department of Workforce Development or a similar agency in another state; or the U.S Department of Labor. This documentation is required prior to the Contractor beginning work on the project site.

- The Contractor has reviewed the list and shall not use any apprenticeable trades on this project.

LIST APPRENTICABLE TRADES (check all that apply to your work to be performed on this contract)

- BRICKLAYER
- CARPENTER
- CEMENT MASON / CONCRETE FINISHER
- CEMENT MASON (HEAVY HIGHWAY)
- CONSTRUCTION CRAFT LABORER
- DATA COMMUNICATION INSTALLER
- ELECTRICIAN
- ENVIRONMENTAL SYSTEMS TECHNICIAN / HVAC SERVICE TECH/HVAC INSTALL / SERVICE
- GLAZIER
- HEAVY EQUIPMENT OPERATOR / OPERATING ENGINEER
- INSULATION WORKER (HEAT & FROST)
- IRON WORKER
- IRON WORKER (ASSEMBLER, METAL BLDGS)
- PAINTER & DECORATOR
- PLASTERER
- PLUMBER
- RESIDENTIAL ELECTRICIAN
- ROOFER & WATER PROOFER
- SHEET METAL WORKER
- SPRINKLER FITTER
- STEAMFITTER
- STEAMFITTER (REFRIGERATION)
- STEAMFITTER (SERVICE)
- TAPER & FINISHER
- TELECOMMUNICATIONS (VOICE, DATA & VIDEO) INSTALLER-TECHNICIAN
- TILE SETTER

SECTION G: BID BOND

KNOW ALL MEN BY THESE PRESENT, THAT _____ (a corporation of the State of _____) (individual), (partnership), hereinafter referred to as the "Principal") and _____, a corporation of the State of _____ (hereinafter referred to as the "Surety") and licensed to do business in the State of Wisconsin, are held and firmly bound unto the City of Madison, (hereinafter referred to as the "Obligee"), in the sum of five per cent (5%) of the amount of the total bid or bids of the Principal herein accepted by the Obligee, for the payment of which the Principal and the Surety bind themselves, their heirs, executors, administrators, successors and assigns, jointly and severally, firmly by these presents.

The conditions of this obligation are such that, whereas the Principal has submitted, to the City of Madison a certain bid, including the related alternate, and substitute bids attached hereto and hereby made a part hereof, to enter into a contract in writing for the construction of:

STOUGHTON ROAD/VOGES ROAD INTERSECTION IMPROVEMENT ASSESSMENT DISTRICT - 2014 CONTRACT NO. 7002

1. If said bid is rejected by the Obligee, then this obligation shall be void.
2. If said bid is accepted by the Obligee and the Principal shall execute and deliver a contract in the form specified by the Obligee (properly completed in accordance with said bid) and shall furnish a bond for his/her faithful performance of said contract, and for the payment of all persons performing labor or furnishing materials in connection therewith, and shall in all other respects perform the agreement created by the acceptance of said bid, then this obligation shall be void.

If said bid is accepted by the Obligee and the Principal shall fail to execute and deliver the contract and the performance and payment bond noted in 2. above executed by this Surety, or other Surety approved by the City of Madison, all within the time specified or any extension thereof, the Principal and Surety agree jointly and severally to forfeit to the Obligee as liquidated damages the sum mentioned above, it being understood that the liability of the Surety for any and all claims hereunder shall in no event exceed the sum of this obligation as stated, and it is further understood that the Principal and Surety reserve the right to recover from the Obligee that portion of the forfeited sum which exceed the actual liquidated damages incurred by the Obligee.

The Surety, for value received, hereby stipulates and agrees that the obligations of said Surety and its bond shall be in no way impaired or affected by an extension of the time within which the Obligee may accept such bid, and said Surety does hereby waive notice of any such extension.

IN WITNESS WHEREOF, the Principal and the Surety have hereunto set their hands and seals, and such of them as are corporations have caused their corporate seals to be hereto affixed and these presents to be signed by their proper officers, on the day and year set forth below.

Seal

Principal

Date

By:

Name of Surety

By:

Date

This certifies that I have been duly licensed as an agent for the above company in Wisconsin under License No. _____ for the year _____, and appointed as attorney in fact with authority to execute this bid bond and the payment and performance bond referred to above, which power of attorney has not been revoked.

Date

Agent

Address

City, State and Zip Code

Telephone Number

NOTE TO SURETY & PRINCIPAL

The bid submitted which this bond guarantees shall be rejected if the following instrument is not attached to this bond:

Power of Attorney showing that the agent of Surety is currently authorized to execute bonds on behalf of the Surety, and in the amounts referenced above.

Certificate of Biennial Bid Bond

| |
|---|
| TIME PERIOD - VALID (FROM/TO) |
| NAME OF SURETY |
| NAME OF CONTRACTOR |
| CERTIFICATE HOLDER <p style="text-align: center;">City of Madison, Wisconsin</p> |

This is to certify that a biennial bid bond issued by the above-named Surety is currently on file with the City of Madison.

This certificate is issued as a matter of information and conveys no rights upon the certificate holder and does not amend, extend or alter the coverage of the biennial bid bond.

Cancellation: Should the above policy be cancelled before the expiration date, the issuing Surety will give thirty (30) days written notice to the certificate holder indicated above.

Signature of Authorized Contractor Representative

Date

SECTION H: AGREEMENT

THIS AGREEMENT made this _____ day of _____ in the year Two Thousand and Fourteen between _____ hereinafter called the Contractor, and the City of Madison, Wisconsin, hereinafter called the City.

WHEREAS, the Common Council of the said City of Madison under the provisions of a resolution adopted _____, and by virtue of authority vested in the said Council, has awarded to the Contractor the work of performing certain construction.

NOW, THEREFORE, the Contractor and the City, for the consideration hereinafter named, agree as follows:

1. **Scope of Work.** The Contractor shall, perform the construction, execution and completion of the following listed complete work or improvement in full compliance with the Plans, Specifications, Standard Specifications, Supplemental Specifications, Special Provisions and contract; perform all items of work covered or stipulated in the proposal; perform all altered or extra work; and shall furnish, unless otherwise provided in the contract, all materials, implements, machinery, equipment, tools, supplies, transportation, and labor necessary to the prosecution and completion of the work or improvements:

STOUGHTON ROAD/VOGES ROAD INTERSECTION IMPROVEMENT ASSESSMENT DISTRICT - 2014 CONTRACT NO. 7002

2. **Completion Date/Contract Time.** Construction work must begin within seven (7) calendar days after the date appearing on mailed written notice to do so shall have been sent to the Contractor and shall be carried on at a rate so as to secure full completion SEE SPECIAL PROVISIONS, the rate of progress and the time of completion being essential conditions of this Agreement.
3. **Contract Price.** The City shall pay to the Contractor at the times, in the manner and on the conditions set forth in said specifications, the sum of _____ (\$_____) Dollars being the amount bid by such Contractor and which was awarded to him/her as provided by law.
4. **Wage Rates for Employees of Public Works Contractors**

General and Authorization. The Contractor shall compensate its employees at the prevailing wage rate in accordance with section 66.0903, Wis. Stats., DWD 290 of the Wisconsin Administrative Code and as hereinafter provided unless otherwise noted in Section D: Special Provisions, Subsection 102.10 – Minimum Rate of Wage Scale.

“Public Works” shall include building or work involving the erection, construction, remodeling, repairing or demolition of buildings, parking lots, highways, streets, bridges, sidewalks, street lighting, traffic signals, sanitary sewers, water mains and appurtenances, storm sewers, and the grading and landscaping of public lands.

“Building or work” includes construction activity as distinguished from manufacturing, furnishing of materials, or servicing and maintenance work, except for the delivery of mineral aggregate such as sand, gravel, bituminous asphaltic concrete or stone which is incorporated into the work under contract with the City by depositing the material directly in final place from transporting vehicle.

“Erection, construction, remodeling, repairing” means all types of work done on a particular building or work at the site thereof in the construction or development of the project, including without limitation, erecting, construction, remodeling, repairing, altering, painting, and decorating, the transporting of materials and supplies to or from the building or work done by the employees of the Contractor, Subcontractor, or Agent thereof, and the manufacturing or furnishing of

materials, articles, supplies or equipment on the site of the building or work, by persons employed by the Contractor, Subcontractor, or Agent thereof.

"Employees working on the project" means laborers, workers, and mechanics employed directly upon the site of work.

"Laborers, Workers, and Mechanics" include pre-apprentices, helpers, trainees, learners and properly registered and indentured apprentices but exclude clerical, supervisory, and other personnel not performing manual labor.

Establishment of Wage Rates. The Department of Public Works shall periodically obtain a current schedule of prevailing wage rates from DWD. The schedule shall be used to establish the City of Madison Prevailing Wage Rate Schedule for Public Works Construction (prevailing wage rate). The Department of Public Works may include known increases to the prevailing wage rate which can be documented and are to occur on a future specific date. The prevailing wage rate shall be included in public works contracts subsequently negotiated or solicited by the City. Except for known increases contained within the schedule, the prevailing wage rate shall not change during the contract. The approved wage rate is attached hereto.

Workforce Profile. The Contractor shall, at the time of signature of the contract, notify the City Engineer in writing of the names and classifications of all the employees of the Contractor, Subcontractors, and Agents proposed for the work. In the alternative, the Contractor shall submit in writing the classifications of all the employees of the Contractor, Subcontractors and Agents and the total number of hours estimated in each classification for the work. This workforce profile(s) shall be reviewed by the City Engineer who may, within ten (10) days, object to the workforce profile(s) as not being reflective of that which would be required for the work. The Contractor may request that the workforce profile, or a portion of the workforce profile, be submitted after the signature of the contract but at least ten (10) days prior to the work commencing. Any costs or time loss resulting from modifications to the workforce profile as a result of the City Engineer's objections shall be the responsibility of the Contractor.

Payrolls and Records. The Contractor shall keep weekly payroll records setting forth the name, address, telephone number, classification, wage rate and fringe benefit package of all the employees who work on the contract, including the employees of the Contractor's subcontractors and agents. Such weekly payroll records must include the required information for all City contracts and all other contracts on which the employee worked during the week in which the employee worked on the contract. The Contractor shall also keep records of the individual time each employee worked on the project and for each day of the project. Such records shall also set forth the total number of hours of overtime credited to each such employee for each day and week and the amount of overtime pay received in that week. The records shall set forth the full weekly wages earned by each employee and the actual hourly wage paid to the employee.

The Contractor shall submit the weekly payroll records, including the records of the Contractor's subcontractors and agents, to the City Engineer for every week that work is being done on the contract. The submittal shall be within twenty-one (21) calendar days of the end of the Contractor's weekly pay period.

Employees shall receive the full amounts accrued at the time of the payment, computed at rates not less than those stated in the prevailing wage rate and each employee's rate shall be determined by the work that is done within the trade or occupation classification which should be properly assigned to the employee.

An employee's classification shall not be changed to a classification of a lesser rate during the contract. If, during the term of the contract, an employee works in a higher pay classification than the one which was previously properly assigned to the employee, then that employee shall be considered to be in the higher pay classification for the balance of the contract, receive the appropriate higher rate of pay, and she/he shall not receive a lesser rate during the balance of the

contract. For purposes of clarification, it is noted that there is a distinct difference between working in a different classification with higher pay and doing work within a classification that has varying rates of pay which are determined by the type of work that is done within the classification. For example, the classification "Operating Engineer" provides for different rates of pay for various classes of work and the Employer shall compensate an employee classified as an "Operating Engineer" based on the highest class of work that is done in one day. Therefore, an "Operating Engineer's" rate may vary on a day to day basis depending on the type of work that is done, but it will never be less than the base rate of an "Operating Engineer". Also, as a matter of clarification, it is recognized that an employee may work in a higher paying classification merely by chance and without prior intention, calculation or design. If such is the case and the performance of the work is truly incidental and the occurrence is infrequent, inconsequential and does not serve to undermine the single classification principle herein, then it may not be required that the employee be considered to be in the higher pay classification and receive the higher rate of pay for the duration of the contract. However, the Contractor is not precluded or prevented from paying the higher rate for the limited time that an employee performs work that is outside of the employee's proper classification.

Questions regarding an employee's classification, rate of pay or rate of pay within a classification, shall be resolved by reference to the established practice that predominates in the industry and on which the trade or occupation rate/classification is based. Rate of pay and classification disputes shall be resolved by relying upon practices established by collective bargaining agreements and guidelines used in such determination by appropriate recognized trade unions operating within the City of Madison.

The Contractor, its Subcontractors and Agents shall submit to interrogation regarding compliance with the provisions of this ordinance.

Mulcting of the employees by the Contractor, Subcontractor, and Agents on Public Works contracts, such as by kickbacks or other devices, is prohibited. The normal rate of wage of the employees of the Contractor, Subcontractor, and Agents shall not be reduced or otherwise diminished as a result of payment of the prevailing wage rate on a public works contract.

Hourly contributions. Hourly contributions shall be determined in accordance with the prevailing wage rate and with DWD. 290.01(10), Wis. Admin. Code.

Apprentices and Subjourney persons. Apprentices and sub journeypersons performing work on the project shall be compensated in accordance with the prevailing wage rate and with DWD 290.02, and 290.025, respectively, Wis. Admin. Code.

Straight Time Wages. The Contractor may pay straight time wages as determined by the prevailing wage rate and DWD 290.04, Wis. Admin. Code.

Overtime Wages. The Contractor shall pay overtime wages as required by the prevailing wage rate and DWD 290.05, Wis. Admin. Code.

Posting of Wage Rates and Hours. A clearly legible copy of the prevailing wage rate, together with the provisions of Sec. 66.0903(10)(a) and (11)(a), Wis. Stats., shall be kept posted in at least one conspicuous and easily accessible place at the project site by the Contractor and such notice shall remain posted during the full time any laborers, workers or mechanics are employed on the contract.

Evidence of Compliance by Contractor. Upon completion of the contract, the Contractor shall file with the Department of Public Works an affidavit stating:

- a. That the Contractor has complied fully with the provisions and requirements of Sec. 66.0903(3), Wis. Stats., and Chapter DWD 290, Wis. Admin. Code; the Contractor has received evidence of compliance from each of the agents and subcontractors; and the

names and addresses of all of the subcontractors and agents who worked on the contract.

- b. That full and accurate records have been kept, which clearly indicate the name and trade or occupation of every laborer, worker or mechanic employed by the Contractor in connection with work on the project. The records shall show the number of hours worked by each employee and the actual wages paid therefore; where these records will be kept and the name, address and telephone number of the person who will be responsible for keeping them. The records shall be retained and made available for a period of at least three (3) years following the completion of the project of public works and shall not be removed without prior notification to the municipality.

Evidence of Compliance by Agent and Subcontractor. Each agent and subcontractor shall file with the Contractor, upon completion of their portion of the work on the contract an affidavit stating that all the provisions of Sec. 66.0903(3), Wis. Stats., have been fully complied with and that full and accurate records have been kept, which clearly indicate the name and trade or occupation of every laborer, worker or mechanic employed by the Contractor in connection with work on the project. The records shall show the number of hours worked by each employee and the actual wages paid therefore; where these records shall be kept and the name, address and telephone number of the person who shall be responsible for keeping them. The records shall be retained and made available for a period of at least three (3) years following the completion of the project of public works and shall not be removed without prior notification to the municipality.

Failure to Comply with the Prevailing Wage Rate. If the Contractor fails to comply with the prevailing wage rate, she/he shall be in default on the contract.

5. **Affirmative Action.** In the performance of the services under this Agreement the Contractor agrees not to discriminate against any employee or applicant because of race, religion, marital status, age, color, sex, disability, national origin or ancestry, income level or source of income, arrest record or conviction record, less than honorable discharge, physical appearance, sexual orientation, gender identity, political beliefs, or student status. The Contractor further agrees not to discriminate against any subcontractor or person who offers to subcontract on this contract because of race, religion, color, age, disability, sex, sexual orientation, gender identity or national origin.

The Contractor agrees that within thirty (30) days after the effective date of this agreement, the Contractor will provide to the City Affirmative Action Division certain workforce utilization statistics, using a form to be furnished by the City.

If the contract is still in effect, or if the City enters into a new agreement with the Contractor, within one year after the date on which the form was required to be provided, the Contractor will provide updated workforce information using a second form, also to be furnished by the City. The second form will be submitted to the City Affirmative Action Division no later than one year after the date on which the first form was required to be provided.

The Contractor further agrees that, for at least twelve (12) months after the effective date of this contract, it will notify the City Affirmative Action Division of each of its job openings at facilities in Dane County for which applicants not already employees of the Contractor are to be considered. The notice will include a job description, classification, qualifications and application procedures and deadlines. The Contractor agrees to interview and consider candidates referred by the Affirmative Action Division if the candidate meets the minimum qualification standards established by the Contractor, and if the referral is timely. A referral is timely if it is received by the Contractor on or before the date started in the notice.

Articles of Agreement
Article I

The Contractor shall take affirmative action in accordance with the provisions of this contract to insure that applicants are employed, and that employees are treated during employment without regard to race, religion, color, age, marital status, disability, sex, sexual orientation, gender identity or national origin and that the employer shall provide harassment free work environment for the realization of the potential of each employee. Such action shall include, but not be limited to, the following: employment, upgrading, demotion or transfer, recruitment or recruitment advertising, layoff or termination, rates of pay or other forms of compensation and selection for training including apprenticeship insofar as it is within the control of the Contractor. The Contractor agrees to post in conspicuous places available to employees and applicants notices to be provided by the City setting out the provisions of the nondiscrimination clauses in this contract.

Article II

The Contractor shall in all solicitations or advertisements for employees placed by or on behalf of the Contractors state that all qualified or qualifiable applicants will be employed without regard to race, religion, color, age, marital status, disability, sex, sexual orientation, gender identity or national origin.

Article III

The Contractor shall send to each labor union or representative of workers with which it has a collective bargaining agreement or other contract or understanding a notice to be provided by the City advising the labor union or worker's representative of the Contractor's equal employment opportunity and affirmative action commitments. Such notices shall be posted in conspicuous places available to employees and applicants for employment.

Article V

The Contractor agrees that it will comply with all provisions of the Affirmative Action Ordinance of the City of Madison, including the contract compliance requirements. The Contractor agrees to submit the model affirmative action plan for public works contractors in a form approved by the Affirmative Action Division Manager.

Article VI

The Contractor will maintain records as required by Section 39.02(9)(f) of the Madison General Ordinances and will provide the City Affirmative Action Division with access to such records and to persons who have relevant and necessary information, as provided in Section 39.02(9)(f). The City agrees to keep all such records confidential, except to the extent that public inspection is required by law.

Article VII

In the event of the Contractor's or subcontractor's failure to comply with the Equal Employment Opportunity and Affirmative Action Provisions of this contract or Section 39.03 and 39.02 of the Madison General Ordinances, it is agreed that the City at its option may do any or all of the following:

1. Cancel, terminate or suspend this Contract in whole or in part.
2. Declare the Contractor ineligible for further City contracts until the Affirmative Action requirements are met.

3. Recover on behalf of the City from the prime Contractor 0.5 percent of the contract award price for each week that such party fails or refuses to comply, in the nature of liquidated damages, but not to exceed a total of five percent (5%) of the contract price, or five thousand dollars (\$5,000), whichever is less. Under public works contracts, if a subcontractor is in noncompliance, the City may recover liquidated damages from the prime Contractor in the manner described above. The preceding sentence shall not be construed to prohibit a prime Contractor from recovering the amount of such damage from the non-complying subcontractor.

Article VIII

The Contractor shall include the above provisions of this contract in every subcontract so that such provisions will be binding upon each subcontractor. The Contractor shall take such action with respect to any subcontractor as necessary to enforce such provisions, including sanctions provided for noncompliance.

Article IX

The Contractor shall allow the maximum feasible opportunity to small business enterprises to compete for any subcontracts entered into pursuant to this contract. (In federally funded contracts the terms "DBE, MBE and WBE" shall be substituted for the term "small business" in this Article.)

**STOUGHTON ROAD/VOGES ROAD INTERSECTION IMPROVEMENT
ASSESSMENT DISTRICT - 2014
CONTRACT NO. 7002**

IN WITNESS WHEREOF, the Contractor has hereunto set his/her hand and seal and the City has caused these presents to be sealed with its corporate seal and to be subscribed by its Mayor and City Clerk the day and year first above written.

Countersigned:

| | |
|---------|--------------|
| | Company Name |
| Witness | Date |
| Witness | Date |
| Witness | Date |
| Witness | Date |

CITY OF MADISON, WISCONSIN

Provisions have been made to pay the liability that will accrue under this contract.

Approved as to form:

| | |
|---|---------------|
| Finance Director | City Attorney |
| Signed this _____ day of _____, 20_____ | |
| Witness | Date |
| Witness | Date |

SECTION I: PAYMENT AND PERFORMANCE BOND

KNOW ALL MEN BY THESE PRESENTS, that we _____
as principal, _____ and

Company of _____ as surety, are held and firmly bound unto the City of Madison, Wisconsin, in the sum of _____ (\$_____) Dollars, lawful money of the United States, for the payment of which sum to the City of Madison, we hereby bind ourselves and our respective executors and administrators firmly by these presents.

The condition of this Bond is such that if the above bounden shall on his/her part fully and faithfully perform all of the terms of the Contract entered into between him/herself and the City of Madison for the construction of:

**STOUGHTON ROAD/VOGES ROAD INTERSECTION IMPROVEMENT
ASSESSMENT DISTRICT - 2014
CONTRACT NO. 7002**

in Madison, Wisconsin, and shall pay all claims for labor performed and material furnished in the prosecution of said work, and save the City harmless from all claims for damages because of negligence in the prosecution of said work, and shall save harmless the said City from all claims for compensation (under Chapter 102, Wisconsin Statutes) of employees and employees of subcontractor, then this Bond is to be void, otherwise of full force, virtue and effect.

Signed and sealed this _____ day of _____

Countersigned:

Company Name (Principal)

Witness

President Seal

Secretary

Approved as to form:

Surety Seal

Salary Employee Commission

City Attorney

By _____
Attorney-in-Fact

This certifies that I have been duly licensed as an agent for the above company in Wisconsin under License No. _____ for the year 20_____, and appointed as attorney-in-fact with authority to execute this payment and performance bond which power of attorney has not been revoked.

Date

Agent Signature

SECTION J: PREVAILING WAGE RATES

PREVAILING WAGE RATE DETERMINATION

Issued by the State of Wisconsin
Department of Workforce Development
Pursuant to s. 66.0903, Wis. Stats.
Issued On: 01/06/2014
Amended On: 02/28/2014

DETERMINATION NUMBER: 201400001

EXPIRATION DATE: Prime Contracts MUST Be Awarded or Negotiated On Or Before 12/31/2014. If NOT, You MUST Reapply.

PROJECT NAME: ALL PUBLIC WORKS PROJECTS UNDER SEC 66.0903, STATS - CITY OF MADISON

PROJECT LOCATION: MADISON CITY, DANE COUNTY, WI

CONTRACTING AGENCY: CITY OF MADISON-ENGINEERING

| | |
|-------------------------|--|
| CLASSIFICATION: | Contractors are responsible for correctly classifying their workers. Either call the Department of Workforce Development (DWD) with trade or classification questions or consult DWD's Dictionary of Occupational Classifications & Work Descriptions on the DWD website at: dwd.wisconsin.gov/er/prevailing_wage_rate/Dictionary/dictionary_main.htm . |
| OVERTIME: | <p>Time and one-half must be paid for all hours worked:</p> <ul style="list-style-type: none">- over 10 hours per day on prevailing wage projects- over 40 hours per calendar week- Saturday and Sunday- on all of the following holidays: January 1; the last Monday in May; July 4; the 1st Monday in September; the 4th Thursday in November; December 25;- The day before if January 1, July 4 or December 25 falls on a Saturday;- The day following if January 1, July 4 or December 25 falls on a Sunday. <p>Apply the time and one-half overtime calculation to whichever is higher between the Hourly Basic Rate listed on this project determination or the employee's regular hourly rate of pay. Add any applicable Premium or DOT Premium to the Hourly Basic Rate before calculating overtime.</p> <p>A DOT Premium (discussed below) may supersede this time and one-half requirement.</p> |
| FUTURE INCREASE: | When a specific trade or occupation requires a future increase, you MUST add the full hourly increase to the "TOTAL" on the effective date(s) indicated for the specific trade or occupation. |
| PREMIUM PAY: | If indicated for a specific trade or occupation, the full amount of such pay MUST be added to the "HOURLY BASIC RATE OF PAY" indicated for such trade or occupation, whenever such pay is applicable. |
| DOT PREMIUM: | This premium only applies to highway and bridge projects owned by the Wisconsin Department of Transportation and to the project type heading "Airport Pavement or State Highway Construction." DO NOT apply the premium calculation under any other project type on this determination. |
| APPRENTICES: | Pay apprentices a percentage of the applicable journey person's hourly basic rate of pay and hourly fringe benefit contributions specified in this determination. Obtain the appropriate percentage from each apprentice's contract or indenture. |
| SUBJOURNEY: | Subjourney wage rates may be available for some of the trades or occupations indicated below with the exception of laborers, truck drivers and heavy equipment operators. Any employer interested in using a subjourney classification on this project MUST complete Form ERD-10880 and request the applicable wage rate from the Department of Workforce Development PRIOR to using the subjourney worker on this project. |

This document **MUST BE POSTED** by the **CONTRACTING AGENCY** in at least one conspicuous and easily accessible place **on the site of the project**. A local governmental unit may post this document at the place normally used to post public notices if there is no common site on the project. This document **MUST** remain posted during the entire time any worker is employed on the project and **MUST** be physically incorporated into the specifications and all contracts and subcontracts. If you have any questions, please write to the Equal Rights Division, Labor Standards Bureau, P.O. Box 8928, Madison, Wisconsin 53708 or call (608) 266-6861.

The following statutory provisions apply to local governmental unit projects of public works and are set forth below pursuant to the requirements of s. 66.0903(8), Stats.

s. 66.0903 (1) (f) & s. 103.49 (1) (c) "PREVAILING HOURS OF LABOR" for any trade or occupation in any area means 10 hours per day and 40 hours per week and may not include any hours worked on a Saturday or Sunday or on any of the following holidays:

1. January 1.
2. The last Monday in May.
3. July 4.
4. The first Monday in September.
5. The 4th Thursday in November.
6. December 25.
7. The day before if January 1, July 4 or December 25 falls on a Saturday.
8. The day following if January 1, July 4 or December 25 falls on a Sunday.

s. 66.0903 (10) RECORDS; INSPECTION; ENFORCEMENT.

(a) Each contractor, subcontractor, or contractor's or subcontractor's agent performing work on a project of public works that is subject to this section shall keep full and accurate records clearly indicating the name and trade or occupation of every person performing the work described in sub. (4) and an accurate record of the number of hours worked by each of those persons and the actual wages paid for the hours worked.

s. 66.0903 (11) LIABILITY AND PENALTIES.

(a) 1. Any contractor, subcontractor, or contractor's or subcontractor's agent who fails to pay the prevailing wage rate determined by the department under sub. (3) or who pays less than 1.5 times the hourly basic rate of pay for all hours worked in excess of the prevailing hours of labor is liable to any affected employee in the amount of his or her unpaid wages or his or her unpaid overtime compensation and in an additional amount as liquidated damages as provided under subd. 2., 3., whichever is applicable.

2. If the department determines upon inspection under sub. (10) (b) or (c) that a contractor, subcontractor, or contractor's or subcontractor's agent has failed to pay the prevailing wage rate determined by the department under sub. (3) or has paid less than 1.5 times the hourly basic rate of pay for all hours worked in excess of the prevailing hours of labor, the department shall order the contractor to pay to any affected employee the amount of his or her unpaid wages or his or her unpaid overtime compensation and an additional amount equal to 100 percent of the amount of those unpaid wages or that unpaid overtime compensation as liquidated damages within a period specified by the department in the order.

3. In addition to or in lieu of recovering the liability specified in subd. 1. as provided in subd. 2., any employee for and in behalf of that employee and other employees similarly situated may commence an action to recover that liability in any court of competent jurisdiction. If the court finds that a contractor, subcontractor, or contractor's or subcontractor's agent has failed to pay the prevailing wage rate determined by the department under sub. (3) or has paid less than 1.5 times the hourly basic rate of pay for all hours worked in excess of the prevailing hours of labor, the court shall order the contractor, subcontractor, or agent to pay to any affected employee the amount of his or her unpaid wages or his or her unpaid overtime compensation and an additional amount equal to 100 percent of the amount of those unpaid wages or that unpaid overtime compensation as liquidated damages.

5. No employee may be a party plaintiff to an action under subd. 3. unless the employee consents in writing to become a party and the consent is filed in the court in which the action is brought. Notwithstanding s. 814.04 (1), the court shall, in addition to any judgment awarded to the plaintiff, allow reasonable attorney fees and costs to be paid by the defendant.

| |
|---------------------------------------|
| BUILDING OR HEAVY CONSTRUCTION |
|---------------------------------------|

Includes sheltered enclosures with walk-in access for the purpose of housing persons, employees, machinery, equipment or supplies and non-sheltered work such as canals, dams, dikes, reservoirs, storage tanks, etc. A sheltered enclosure need not be "habitable" in order to be considered a building. The installation of machinery and/or equipment, both above and below grade level, does not change a project's character as a building. On-site grading, utility work and landscaping are included within this definition. Residential buildings of four (4) stories or less, agricultural buildings, parking lots and driveways are NOT included within this definition.

| |
|-----------------------|
| SKILLED TRADES |
|-----------------------|

| <u>CODE</u> | <u>TRADE OR OCCUPATION</u> | <u>HOURLY BASIC RATE OF PAY</u> | <u>HOURLY FRINGE BENEFITS</u> | <u>TOTAL</u> |
|--|--|---|---------------------------------------|--------------|
| | | \$ | \$ | \$ |
| Fringe Benefits Must Be Paid On <u>All</u> Hours Worked | | | | |
| 101 | Acoustic Ceiling Tile Installer | 30.48 | 15.90 | 46.38 |
| 102 | Boilermaker Future Increase(s): Add \$1.50/hr on 1/01/2015; Add \$1.50/hr. on 01/01/2016 | 32.05 | 28.04 | 60.09 |
| 103 | Bricklayer, Blocklayer or Stonemason Premium Increase(s): DOT PREMIUM: Pay two times the hourly basic rate on Sunday, New Year's Day, Memorial Day, Independence Day, Labor Day, Thanksgiving Day & Christmas Day. | 32.01 | 17.35 | 49.36 |
| 104 | Cabinet Installer | 30.48 | 15.90 | 46.38 |
| 105 | Carpenter | 30.48 | 15.90 | 46.38 |
| 106 | Carpet Layer or Soft Floor Coverer | 30.48 | 15.90 | 46.38 |
| 107 | Cement Finisher | 31.58 | 16.13 | 47.71 |
| 108 | Drywall Taper or Finisher | 24.80 | 16.60 | 41.40 |
| 109 | Electrician Premium Increase(s): DOT PREMIUM: Pay two times the hourly basic rate on Sunday, New Year's Day, Memorial Day, Independence Day, Labor Day, Thanksgiving Day & Christmas Day. | 34.07 | 19.25 | 53.32 |
| 110 | Elevator Constructor | 42.86 | 23.84 | 66.70 |
| 111 | Fence Erector | 24.72 | 0.00 | 24.72 |
| 112 | Fire Sprinkler Fitter | 36.07 | 18.73 | 54.80 |
| 113 | Glazier | 38.03 | 13.42 | 51.45 |
| 114 | Heat or Frost Insulator | 33.68 | 24.31 | 57.99 |
| 115 | Insulator (Batt or Blown) | 15.00 | 9.50 | 24.50 |
| 116 | Ironworker | 31.25 | 19.46 | 50.71 |
| 117 | Lather | 30.48 | 15.90 | 46.38 |

| Fringe Benefits Must Be Paid On <u>All</u> Hours Worked | | HOURLY BASIC RATE OF PAY | HOURLY FRINGE BENEFITS | TOTAL |
|--|--|---|---------------------------------------|--------------|
| CODE | TRADE OR OCCUPATION | \$ | \$ | \$ |
| 118 | Line Constructor (Electrical) | 38.25 | 17.31 | 55.56 |
| 119 | Marble Finisher | 26.89 | 19.18 | 46.07 |
| 120 | Marble Mason | 32.01 | 17.35 | 49.36 |
| 121 | Metal Building Erector | 22.00 | 10.00 | 32.00 |
| 122 | Millwright | 32.11 | 15.95 | 48.06 |
| 123 | Overhead Door Installer | 20.95 | 4.94 | 25.89 |
| 124 | Painter | 24.50 | 16.60 | 41.10 |
| 125 | Pavement Marking Operator | 30.00 | 0.00 | 30.00 |
| 126 | Piledriver | 30.98 | 15.90 | 46.88 |
| 127 | Pipeline Fuser or Welder (Gas or Utility) | 30.79 | 19.74 | 50.53 |
| 129 | Plasterer | 31.03 | 17.71 | 48.74 |
| 130 | Plumber Future Increase(s): Add \$1/hr on 6/1/2014. | 36.42 | 16.87 | 53.29 |
| 132 | Refrigeration Mechanic | 41.60 | 16.71 | 58.31 |
| 133 | Roofer or Waterproofer | 29.40 | 6.25 | 35.65 |
| 134 | Sheet Metal Worker | 34.45 | 22.57 | 57.02 |
| 135 | Steamfitter Future Increase(s): Add \$1.70/hr on 6/1/2014. | 42.95 | 17.81 | 60.76 |
| 137 | Teledata Technician or Installer Premium Increase(s): DOT PREMIUM: Pay two times the hourly basic rate on Sunday, New Year's Day, Memorial Day, Independence Day, Labor Day, Thanksgiving Day & Christmas Day. | 22.25 | 12.24 | 34.49 |
| 138 | Temperature Control Installer | 32.94 | 18.80 | 51.74 |
| 139 | Terrazzo Finisher | 26.89 | 19.18 | 46.07 |
| 140 | Terrazzo Mechanic | 30.20 | 18.42 | 48.62 |
| 141 | Tile Finisher | 23.85 | 17.18 | 41.03 |
| 142 | Tile Setter | 29.81 | 17.18 | 46.99 |
| 143 | Tuckpointer, Caulker or Cleaner | 35.25 | 13.15 | 48.40 |
| 144 | Underwater Diver (Except on Great Lakes) | 34.48 | 15.90 | 50.38 |
| 146 | Well Driller or Pump Installer | 25.32 | 15.65 | 40.97 |
| 147 | Siding Installer | 25.92 | 18.04 | 43.96 |

| Fringe Benefits Must Be Paid On <u>All</u> Hours Worked | | HOURLY BASIC RATE OF PAY | HOURLY FRINGE BENEFITS | TOTAL |
|--|--|---|---------------------------------------|--------------|
| CODE | TRADE OR OCCUPATION | \$ | \$ | \$ |
| 150 | Heavy Equipment Operator - ELECTRICAL LINE CONSTRUCTION ONLY | 29.16 | 14.34 | 43.50 |
| 151 | Light Equipment Operator -ELECTRICAL LINE CONSTRUCTION ONLY | 30.60 | 14.86 | 45.46 |
| 152 | Heavy Truck Driver - ELECTRICAL LINE CONSTRUCTION ONLY | 26.78 | 13.63 | 40.41 |
| 153 | Light Truck Driver - ELECTRICAL LINE CONSTRUCTION ONLY | 24.86 | 12.97 | 37.83 |
| 154 | Groundman - ELECTRICAL LINE CONSTRUCTION ONLY | 21.75 | 12.70 | 34.45 |

TRUCK DRIVERS

| Fringe Benefits Must Be Paid On <u>All</u> Hours Worked | | HOURLY BASIC RATE OF PAY | HOURLY FRINGE BENEFITS | TOTAL |
|--|--|---|---------------------------------------|--------------|
| CODE | TRADE OR OCCUPATION | \$ | \$ | \$ |
| 201 | Single Axle or Two Axle | 32.39 | 18.46 | 50.85 |
| 203 | Three or More Axle | 18.00 | 22.88 | 40.88 |
| 204 | Articulated, Euclid, Dumptor, Off Road Material Hauler | 32.89 | 18.96 | 51.85 |
| 205 | Pavement Marking Vehicle | 18.00 | 22.88 | 40.88 |
| 207 | Truck Mechanic | 18.00 | 22.88 | 40.88 |

LABORERS

| Fringe Benefits Must Be Paid On <u>All</u> Hours Worked | | HOURLY BASIC RATE OF PAY | HOURLY FRINGE BENEFITS | TOTAL |
|--|---|---|---------------------------------------|--------------|
| CODE | TRADE OR OCCUPATION | \$ | \$ | \$ |
| 301 | General Laborer Premium Increase(s): Add \$1.00/hr for certified welder; Add \$.25/hr for mason tender | 24.21 | 14.63 | 38.84 |
| 302 | Asbestos Abatement Worker | 24.36 | 14.44 | 38.80 |
| 303 | Landscaper | 21.01 | 9.37 | 30.38 |
| 310 | Gas or Utility Pipeline Laborer (Other Than Sewer and Water) | 21.01 | 13.63 | 34.64 |
| 311 | Fiber Optic Laborer (Outside, Other Than Concrete Encased) Premium Increase(s): DOT PREMIUMS: Pay two times the hourly basic rate on New Year's Day, Memorial Day, Independence Day, Labor Day, Thanksgiving Day & Christmas Day. | 18.33 | 13.65 | 31.98 |
| 314 | Railroad Track Laborer | 23.46 | 3.30 | 26.76 |
| 315 | Final Construction Clean-Up Worker | 16.00 | 0.00 | 16.00 |

**HEAVY EQUIPMENT OPERATORS
SITE PREPARATION, UTILITY OR LANDSCAPING WORK ONLY**

| Fringe Benefits Must Be Paid On <u>All</u> Hours Worked | | HOURLY BASIC RATE OF PAY | HOURLY FRINGE BENEFITS | TOTAL |
|--|--|---|---------------------------------------|--------------|
| CODE | TRADE OR OCCUPATION | \$ | \$ | \$ |
| 501 | Air Track, Rotary or Percussion Drilling Machine &/or Hammers, Blaster; Asphalt Milling Machine; Boring Machine (Directional, Horizontal or Vertical); Backhoe (Track Type) Having a Mfgr's Rated Capacity of 130,000 Lbs. or Over; Backhoe (Track Type) Having a Mfgr's Rated Capacity of Under 130,000 Lbs., Backhoe (Mini, 15,000 Lbs. & Under); Bulldozer or Endloader (Over 40 hp); Compactor (Self-Propelled 85 Ft Total Drum Width & Over, or Tractor Mounted, Towed & Light Equipment); Concrete Batch Plant, Batch Hopper; Concrete Breaker (Large, Auto, Vibratory/Sonic, Manual or Remote); Crane, Shovel, Dragline, Clamshells; Forklift (Machinery Moving or Steel Erection, 25 Ft & Over); Gradall (Cruz-Aire Type); Grader or Motor Patrol; Master Mechanic; Mechanic or Welder; Robotic Tool Carrier (With or Without Attachments); Scraper (Self Propelled or Tractor Drawn) 5 cu yds or More Capacity; Tractor or Truck Mounted Hydraulic Backhoe; Tractor or Truck Mounted Hydraulic Crane (10 Tons or Under); Tractor (Scraper, Dozer, Pusher, Loader); Trencher (Wheel Type or Chain Type Having Over 8 Inch Bucket). | 33.42 | 18.96 | 52.38 |
| 502 | Backfiller; Broom or Sweeper; Bulldozer or Endloader (Under 40 hp); Environmental Burner; Forestry Equipment, Timbco, Tree Shear, Tub Grinder, Processor; Jeep Digger; Screed (Milling Machine); Skid Rig; Straddle Carrier or Travel Lift; Stump Chipper; Trencher (Wheel Type or Chain Type Having 8 Inch Bucket & Under). | 32.89 | 18.96 | 51.85 |
| 503 | Air Compressor (&/or 400 CFM or Over); Augers (Vertical & Horizontal); Compactor (Self-Propelled 84 Ft Total Drum Width & Under, or Tractor Mounted, Towed & Light Equipment); Crusher, Screening or Wash Plant; Farm or Industrial Type Tractor; Forklift; Generator (&/or 150 KW or Over); Greaser; High Pressure Utility Locating Machine (Daylighting Machine); Mulcher; Oiler; Post Hole Digger or Driver; Pump (3 Inch or Over) or Well Points; Refrigeration Plant or Freeze Machine; Rock, Stone Breaker; Skid Steer Loader (With or Without Attachments); Vibratory Hammer or Extractor, Power Pack. | 30.82 | 18.96 | 49.78 |
| 504 | Work Performed on the Great Lakes Including Diver; Wet Tender or Hydraulic Dredge Engineer. | 38.80 | 20.17 | 58.97 |
| 505 | Work Performed on the Great Lakes Including Crane or Backhoe Operator; Assistant Hydraulic Dredge Engineer; Hydraulic Dredge Leverman or Diver's Tender; Mechanic or Welder; 70 Ton & Over Tug Operator. Premium Increase(s): Add \$.50/hr for Friction Crane, Lattice Boom or Crane Certification (CCO). | 41.65 | 21.71 | 63.36 |
| 506 | Work Performed on the Great Lakes Including Deck Equipment Operator or Machineryman (Maintains Cranes Over 50 Tons or Backhoes 115,000 Lbs. or More); Tug, Launch or Loader, Dozer or Like Equipment When Operated on a Barge, Breakwater Wall, Slip, Dock or Scow, Deck Machinery. | 37.10 | 21.57 | 58.67 |

| | | | | |
|-----|---|-------|-------|-------|
| 507 | Work Performed on the Great Lakes Including Deck Equipment Operator, Machineryman or Fireman (Operates 4 Units or More or Maintains Cranes 50 Tons or Under or Backhoes 115,000 Lbs. or Under); Deck Hand, Deck Engineer or Assistant Tug Operator; Off Road Trucks - Great Lakes ONLY. | 34.50 | 20.04 | 54.54 |
|-----|---|-------|-------|-------|

**HEAVY EQUIPMENT OPERATORS
EXCLUDING SITE PREPARATION, UTILITY, PAVING LANDSCAPING WORK**

| CODE | TRADE OR OCCUPATION | Fringe Benefits Must Be Paid On <u>All</u> Hours Worked | | |
|-------------|---|--|---------------------------------------|--------------|
| | | HOURLY BASIC RATE OF PAY | HOURLY FRINGE BENEFITS | TOTAL |
| | | \$ | \$ | \$ |
| 508 | Boring Machine (Directional); Crane, Tower Crane, Pedestal Tower or Derrick, With or Without Attachments, With a Lifting Capacity of Over 100 Tons, Self-Erecting Tower Crane With a Lifting Capacity of Over 4,000 Lbs., Crane With Boom Dollies; Crane, Tower Crane, Pedestal Tower or Derrick, With Boom, Leads &/or Jib Lengths Measuring 176 Ft or Over; Master Mechanic. Premium Increase(s): Add \$.50/hr for >200 Ton / Add \$1/hr at 300 Ton / Add \$1.50/hr at 400 Ton / Add \$2/hr at 500 Ton & Over. | 35.62 | 18.96 | 54.58 |
| 509 | Backhoe (Track Type) Having a Mfgr's Rated Capacity of 130,000 Lbs. or Over; Boring Machine (Horizontal or Vertical); Caisson Rig; Crane, Tower Crane, Portable Tower, Pedestal Tower or Derrick, With or Without Attachments, With a Lifting Capacity of 100 Tons or Under, Self-Erecting Tower Crane With A Lifting Capacity Of 4,000 Lbs. & Under; Crane, Tower Crane, Portable Tower, Pedestal Tower or Derrick, With Boom, Leads &/or Jib Lengths Measuring 175 Ft or Under; Pile Driver; Versi Lifts, Tri-Lifts & Gantrys (20,000 Lbs. & Over). | 36.35 | 6.95 | 43.30 |
| 510 | Backhoe (Track Type) Having a Mfgr.'s Rated Capacity of Under 130,000 Lbs., Backhoe (Mini, 15,000 Lbs. & Under); Concrete Bump Cutter, Grinder, Planing or Grooving Machine; Concrete Laser/Screed; Concrete Paver (Slipform); Concrete Pump (Over 46 Meter), Concrete Conveyor (Rotec or Bidwell Type); Concrete Slipform Placer Curb & Gutter Machine; Concrete Spreader & Distributor; Dredge (NOT Performing Work on the Great Lakes); Forklift (Machinery Moving or Steel Erection, 25 Ft & Over); Gradall (Cruz-Aire Type); Hydro-Blaster (10,000 PSI or Over); Milling Machine; Skid Rig; Traveling Crane (Bridge Type). | 33.42 | 18.96 | 52.38 |
| 511 | Air, Track, Rotary or Percussion Drilling Machine &/or Hammers, Blaster; Bulldozer or Endloader (Over 40 hp); Compactor (Self-Propelled 85 Ft Total Drum Width & Over, or Tractor Mounted, Towed & Light Equipment); Concrete Pump (46 Meter & Under), Concrete Conveyor (Rotec or Bidwell Type); Crane (Carry Deck, Mini) or Truck Mounted Hydraulic Crane (10 Tons or Under); Environmental Burner; Gantrys (Under 20,000 Lbs.); Grader or Motor Patrol; High Pressure Utility Locating Machine (Daylighting Machine); Manhoist; Material or Stack Hoist; Mechanic or Welder; Railroad Track Rail Leveling Machine, Tie Placer, Extractor, Tamper, Stone Leveler or Rehabilitation Equipment; Roller (Over 5 Ton); Scraper (Self Propelled or Tractor Drawn) 5 cu yd or More Capacity; Screed (Milling Machine); Sideboom; Straddle Carrier or Travel Lift; Tining or Curing Machine; Tractor (Scraper, Dozer, Pusher, Loader); Tractor or Truck Mounted Hydraulic Backhoe; Tractor or Truck Mounted Hydraulic Crane (10 Tons or Under); Trencher (Wheel Type or Chain Type Having Over 8-Inch Bucket). | 32.89 | 18.96 | 51.85 |

| Fringe Benefits Must Be Paid On <u>All</u> Hours Worked | | HOURLY BASIC RATE OF PAY | HOURLY FRINGE BENEFITS | TOTAL |
|--|---|---|---------------------------------------|--------------|
| CODE | TRADE OR OCCUPATION | \$ | \$ | \$ |
| 512 | Backfiller; Broom or Sweeper; Bulldozer or Endloader (Under 40 hp); Compactor (Self-Propelled 84 Ft Total Drum Width & Under, or Tractor Mounted, Towed & Light Equipment); Concrete Batch Plant, Batch Hopper; Concrete Breaker (Large, Auto, Vibratory/Sonic, Manual or Remote); Concrete Conveyor System; Concrete Finishing Machine (Road Type); Fireman (Pile Driver & Derrick NOT Performing Work on the Great Lakes); Grout Pump; Hoist (Tugger, Automatic); Industrial Locomotives; Jeep Digger; Lift Slab Machine; Mulcher; Roller (Rubber Tire, 5 Ton or Under); Screw or Gypsum Pumps; Stabilizing or Concrete Mixer (Self-Propelled or 14S or Over); Stump Chipper; Trencher (Wheel Type or Chain Type Having 8-Inch Bucket & Under); Winches & A-Frames. | 30.82 | 18.96 | 49.78 |
| 513 | Air Compressor (&/or 400 CFM or Over); Air, Electric or Hydraulic Jacking System; Augers (Vertical & Horizontal); Boatmen (NOT Performing Work on the Great Lakes); Boiler (Temporary Heat); Crusher, Screening or Wash Plant; Elevator; Farm or Industrial Type Tractor; Fireman (Asphalt Plant NOT Performing Work on the Great Lakes); Forklift; Generator (&/or 150 KW or Over); Greaser; Heaters (Mechanical); Loading Machine (Conveyor); Oiler; Post Hole Digger or Driver; Prestress Machine; Pump (3 Inch or Over) or Well Points; Refrigeration Plant or Freeze Machine; Robotic Tool Carrier (With or Without Attachments); Rock, Stone Breaker; Skid Steer Loader (With or Without Attachments); Vibratory Hammer or Extractor, Power Pack. | 24.19 | 17.89 | 42.08 |
| 514 | Gas or Utility Pipeline, Except Sewer & Water (Primary Equipment). | 36.34 | 21.14 | 57.48 |
| 515 | Gas or Utility Pipeline, Except Sewer & Water (Secondary Equipment). Future Increase(s): Add \$1.60/hr on 06/01/2014; Add \$1.65/hr on 06/01/2015. | 32.32 | 18.55 | 50.87 |
| 516 | Fiber Optic Cable Equipment Future Increase(s): Add \$1.75/hr on 02/01/2014. | 27.89 | 17.20 | 45.09 |

| |
|--|
| SEWER, WATER OR TUNNEL CONSTRUCTION |
|--|

Includes those projects that primarily involve public sewer or water distribution, transmission or collection systems and related tunnel work (excluding buildings).

SKILLED TRADES

| Fringe Benefits Must Be Paid On <u>All</u> Hours Worked | | HOURLY BASIC RATE OF PAY | HOURLY FRINGE BENEFITS | TOTAL |
|--|---|---|---------------------------------------|--------------|
| CODE | TRADE OR OCCUPATION | \$ | \$ | \$ |
| 103 | Bricklayer, Blocklayer or Stonemason Premium Increase(s): DOT PREMIUM: Pay two times the hourly basic rate on Sunday, New Year's Day, Memorial Day, Independence Day, Labor Day, Thanksgiving Day & Christmas Day. | 35.10 | 18.40 | 53.50 |
| 105 | Carpenter Future Increase(s): Add \$1.25/hr on 6/2/2014. Premium Increase(s): DOT PREMIUM: Pay two times the hourly basic rate on Sunday, New Year's Day, Memorial Day, Independence Day, Labor Day, Thanksgiving Day & Christmas Day. | 33.68 | 19.81 | 53.49 |
| 107 | Cement Finisher Future Increase(s): Add \$1.87 on 6/1/14; Add \$1.87 on 6/1/15; Add \$1.75 on 6/1/16. Premium Increase(s): DOT PREMIUMS: 1) Pay two times the hourly basic rate on Sunday, New Year's Day, Memorial Day, Independence Day, Labor Day, Thanksgiving Day & Christmas Day. 2) Add \$1.40/hr when the Wisconsin Department of Transportation or responsible governing agency requires that work be performed at night under artificial illumination with traffic control and the work is completed after sunset and before sunrise. | 33.51 | 16.13 | 49.64 |
| 109 | Electrician Premium Increase(s): DOT PREMIUM: Pay two times the hourly basic rate on Sunday, New Year's Day, Memorial Day, Independence Day, Labor Day, Thanksgiving Day & Christmas Day. | 32.82 | 22.61 | 55.43 |
| 111 | Fence Erector | 24.72 | 0.00 | 24.72 |
| 116 | Ironworker | 31.25 | 19.46 | 50.71 |
| 118 | Line Constructor (Electrical) | 38.25 | 17.31 | 55.56 |
| 125 | Pavement Marking Operator | 16.00 | 7.35 | 23.35 |
| 126 | Piledriver | 30.98 | 15.90 | 46.88 |
| 130 | Plumber | 33.75 | 14.07 | 47.82 |
| 135 | Steamfitter | 42.45 | 16.71 | 59.16 |
| 137 | Teledata Technician or Installer | 21.89 | 11.85 | 33.74 |

| Fringe Benefits Must Be Paid On <u>All</u> Hours Worked | | HOURLY BASIC RATE OF PAY | HOURLY FRINGE BENEFITS | TOTAL |
|--|--|---|---------------------------------------|--------------|
| CODE | TRADE OR OCCUPATION | \$ | \$ | \$ |
| 143 | Tuckpointer, Caulker or Cleaner | 35.25 | 13.15 | 48.40 |
| 144 | Underwater Diver (Except on Great Lakes) | 38.80 | 20.17 | 58.97 |
| 146 | Well Driller or Pump Installer | 25.32 | 15.65 | 40.97 |
| 150 | Heavy Equipment Operator - ELECTRICAL LINE CONSTRUCTION ONLY | 29.16 | 14.34 | 43.50 |
| 151 | Light Equipment Operator -ELECTRICAL LINE CONSTRUCTION ONLY | 30.60 | 14.86 | 45.46 |
| 152 | Heavy Truck Driver - ELECTRICAL LINE CONSTRUCTION ONLY | 26.78 | 13.63 | 40.41 |
| 153 | Light Truck Driver - ELECTRICAL LINE CONSTRUCTION ONLY | 24.86 | 12.97 | 37.83 |
| 154 | Groundman - ELECTRICAL LINE CONSTRUCTION ONLY | 21.75 | 12.70 | 34.45 |

TRUCK DRIVERS

| Fringe Benefits Must Be Paid On <u>All</u> Hours Worked | | HOURLY BASIC RATE OF PAY | HOURLY FRINGE BENEFITS | TOTAL |
|--|--|---|---------------------------------------|--------------|
| CODE | TRADE OR OCCUPATION | \$ | \$ | \$ |
| 201 | Single Axle or Two Axle | 30.00 | 15.00 | 45.00 |
| 203 | Three or More Axle | 16.00 | 7.35 | 23.35 |
| 204 | Articulated, Euclid, Dumptor, Off Road Material Hauler | 32.89 | 18.96 | 51.85 |
| 205 | Pavement Marking Vehicle | 16.00 | 7.35 | 23.35 |
| 207 | Truck Mechanic | 16.00 | 7.35 | 23.35 |

LABORERS

| Fringe Benefits Must Be Paid On <u>All</u> Hours Worked | | HOURLY BASIC RATE OF PAY | HOURLY FRINGE BENEFITS | TOTAL |
|--|--|---|---------------------------------------|--------------|
| CODE | TRADE OR OCCUPATION | \$ | \$ | \$ |
| 301 | General Laborer Premium Increase(s): Add \$.20 for blaster, bracer, manhole builder, caulker, bottomman and power tool; Add \$.55 for pipelayer; Add \$1.00 for tunnel work 0-15 lbs. compressed air; Add \$2.00 for over 15-30 lbs. compressed air; Add \$3.00 for over 30 lbs. compressed air. | 25.60 | 14.62 | 40.22 |
| 303 | Landscaper | 25.28 | 11.46 | 36.74 |
| 304 | Flagperson or Traffic Control Person | 24.70 | 10.72 | 35.42 |
| 311 | Fiber Optic Laborer (Outside, Other Than Concrete Encased) | 18.31 | 12.67 | 30.98 |
| 314 | Railroad Track Laborer | 23.46 | 3.30 | 26.76 |

**HEAVY EQUIPMENT OPERATORS
SEWER, WATER OR TUNNEL WORK**

| Fringe Benefits Must Be Paid On <u>All</u> Hours Worked | | HOURLY BASIC RATE OF PAY | HOURLY FRINGE BENEFITS | TOTAL |
|--|---|---|---------------------------------------|--------------|
| CODE | TRADE OR OCCUPATION | \$ | \$ | \$ |
| 521 | Backhoe (Track Type) Having a Mfgr.'s Rated Capacity of 130,000 Lbs. or Over; Caisson Rig; Crane, Tower Crane, Pedestal Tower or Derrick, With Boom, Leads &/or Jib Lengths Measuring 176 Ft or Over; Crane, Tower Crane, Pedestal Tower or Derrick, With or Without Attachments, With a Lifting Capacity of Over 100 Tons, Self-Erecting Tower Crane With a Lifting Capacity Of Over 4,000 Lbs., Crane With Boom Dollies; Master Mechanic; Pile Driver. Premium Increase(s): Add \$.25/hr for all >45 Ton lifting capacity cranes | 34.62 | 18.96 | 53.58 |
| 522 | Backhoe (Track Type) Having a Mfgr.'s Rated Capacity of Under 130,000 Lbs., Backhoe (Mini, 15,000 Lbs. & Under); Boring Machine (Directional); Concrete Bump Cutter, Grinder, Planing or Grooving Machine; Concrete Laser/Screed; Concrete Paver (Slipform); Concrete Pump (Over 46 Meter), Concrete Conveyor (Rotec or Bidwell Type); Concrete Spreader & Distributor; Crane, Tower Crane, Portable Tower, Pedestal Tower or Derrick, With Boom, Leads &/or Jib Lengths Measuring 175 Ft or Under; Crane, Tower Crane, Portable Tower, Pedestal Tower or Derrick, With or Without Attachments, With a Lifting Capacity of 100 Tons or Under, Self-Erecting Tower Crane With a Lifting Capacity of 4,000 Lbs. & Under; Dredge (NOT Performing Work on the Great Lakes); Milling Machine; Skid Rig; Telehandler; Traveling Crane (Bridge Type). | 33.42 | 18.96 | 52.38 |
| 523 | Air Track, Rotary or Percussion Drilling Machine &/or Hammers, Blaster; Boring Machine (Horizontal or Vertical); Bulldozer or Endloader (Over 40 hp); Crane (Carry Deck, Mini) or Truck Mounted Hydraulic Crane (10 Tons or Under); Concrete Pump (46 Meter & Under), Concrete Conveyor (Rotec or Bidwell Type); Concrete Slipform Placer Curb & Gutter Machine; Gradall (Cruz-Aire Type); Grader or Motor Patrol; Hydro-Blaster (10,000 PSI or Over); Manhoist; Material or Stack Hoist; Mechanic or Welder; Roller (Over 5 Ton); Scraper (Self Propelled or Tractor Drawn) 5 cu yd or More Capacity; Screed (Milling Machine); Sideboom; Straddle Carrier or Travel Lift; Tractor (Scraper, Dozer, Pusher, Loader); Tractor or Truck Mounted Hydraulic Backhoe; Tractor or Truck Mounted Hydraulic Crane (10 Tons or Under); Trencher (Wheel Type or Chain Type Having Over 8-Inch Bucket). | 32.89 | 18.96 | 51.85 |

| Fringe Benefits Must Be Paid On <u>All</u> Hours Worked | | HOURLY BASIC RATE OF PAY | HOURLY FRINGE BENEFITS | TOTAL |
|--|--|---|---------------------------------------|--------------|
| CODE | TRADE OR OCCUPATION | \$ | \$ | \$ |
| 524 | Backfiller; Broom or Sweeper; Bulldozer or Endloader (Under 40 hp); Compactor (Self-Propelled 85 Ft Total Drum Width & Over, or Tractor Mounted, Towed & Light Equipment); Concrete Batch Plant, Batch Hopper; Concrete Breaker (Large, Auto, Vibratory/Sonic, Manual or Remote); Concrete Conveyor System; Concrete Finishing Machine (Road Type); Environmental Burner; Fireman (Pile Driver & Derrick NOT Performing Work on the Great Lakes); Forestry Equipment, Timbco, Tree Shear, Tub Grinder, Processor; Hoist (Tugger, Automatic); Grout Pump; Jeep Digger; Lift Slab Machine; Mulcher; Power Subgrader; Pump (3 Inch or Over) or Well Points; Robotic Tool Carrier (With or Without Attachments); Roller (Rubber Tire, 5 Ton or Under); Screw or Gypsum Pumps; Stabilizing or Concrete Mixer (Self-Propelled or 14S or Over); Stump Chipper; Tining or Curing Machine; Trencher (Wheel Type or Chain Type Having 8-Inch Bucket & Under); Winches & A-Frames. Future Increase(s): Add \$1.05/hr on 6/2/2014; Add \$1.55/hr on 6/1/2015. Premium Increase(s): Add \$.25/hr for operating tower crane. | 35.11 | 19.45 | 54.56 |
| 525 | Air Compressor (&/or 400 CFM or Over); Air, Electric or Hydraulic Jacking System; Augers (Vertical & Horizontal); Compactor (Self-Propelled 84 Ft Total Drum Width & Under, or Tractor Mounted, Towed & Light Equipment); Crusher, Screening or Wash Plant; Farm or Industrial Type Tractor; Fireman (Asphalt Plant NOT Performing Work on the Great Lakes); Generator (&/or 150 KW or Over); Heaters (Mechanical); High Pressure Utility Locating Machine (Daylighting Machine); Loading Machine (Conveyor); Post Hole Digger or Driver; Refrigeration Plant or Freeze Machine; Rock, Stone Breaker; Skid Steer Loader (With or Without Attachments); Vibratory Hammer or Extractor, Power Pack. | 30.19 | 20.94 | 51.13 |
| 526 | Boiler (Temporary Heat); Forklift; Greaser; Oiler. | 24.19 | 17.89 | 42.08 |
| 527 | Work Performed on the Great Lakes Including Diver; Wet Tender or Hydraulic Dredge Engineer. | 38.80 | 20.17 | 58.97 |
| 528 | Work Performed on the Great Lakes Including 70 Ton & Over Tug Operator; Assistant Hydraulic Dredge Engineer; Crane or Backhoe Operator; Hydraulic Dredge Leverman or Diver's Tender; Mechanic or Welder. | 38.80 | 20.17 | 58.97 |
| 529 | Work Performed on the Great Lakes Including Deck Equipment Operator or Machineryman (Maintains Cranes Over 50 Tons or Backhoes 115,000 Lbs. or More); Tug, Launch or Loader, Dozer or Like Equipment When Operated on a Barge, Breakwater Wall, Slip, Dock or Scow, Deck Machinery. | 34.50 | 20.04 | 54.54 |
| 530 | Work Performed on the Great Lakes Including Deck Equipment Operator; Machineryman or Fireman (Operates 4 Units or More or Maintains Cranes 50 Tons or Under or Backhoes 115,000 Lbs. or Under), Deck Hand, Deck Engineer or Assistant Tug Operator; Off Road Trucks - Great Lakes ONLY. | 34.50 | 20.04 | 54.54 |

| |
|---|
| AIRPORT PAVEMENT OR STATE HIGHWAY CONSTRUCTION |
|---|

Includes all airport projects (excluding buildings) and all projects awarded by the Wisconsin Department of Transportation (excluding buildings).

SKILLED TRADES

| <u>CODE</u> | <u>TRADE OR OCCUPATION</u> | Fringe Benefits Must Be Paid On <u>All</u> Hours Worked | | |
|-------------|---|--|---|--------------------|
| | | <u>HOURLY BASIC RATE OF PAY</u> \$ | <u>HOURLY FRINGE BENEFITS</u> \$ | <u>TOTAL</u> \$ |
| 103 | Bricklayer, Blocklayer or Stonemason | 32.01 | 17.35 | 49.36 |
| 105 | Carpenter | 30.48 | 15.90 | 46.38 |
| 107 | Cement Finisher Future Increase(s): Add \$1.87 on 6/1/14; Add \$1.87 on 6/1/15; Add \$1.75 on 6/1/16. Premium Increase(s): DOT PREMIUMS: 1) Pay two times the hourly basic rate on Sunday, New Year's Day, Memorial Day, Independence Day, Labor Day, Thanksgiving Day & Christmas Day. 2) Add \$1.40/hr when the Wisconsin Department of Transportation or responsible governing agency requires that work be performed at night under artificial illumination with traffic control and the work is completed after sunset and before sunrise. | 33.51 | 16.13 | 49.64 |
| 109 | Electrician Premium Increase(s): DOT PREMIUM: Pay two times the hourly basic rate on Sunday, New Year's Day, Memorial Day, Independence Day, Labor Day, Thanksgiving Day & Christmas Day. | 34.07 | 19.25 | 53.32 |
| 111 | Fence Erector | 24.72 | 0.00 | 24.72 |
| 116 | Ironworker | 31.25 | 19.46 | 50.71 |
| 118 | Line Constructor (Electrical) | 38.25 | 17.31 | 55.56 |
| 124 | Painter | 21.87 | 11.37 | 33.24 |
| 125 | Pavement Marking Operator | 30.00 | 0.00 | 30.00 |
| 126 | Piledriver | 30.98 | 15.90 | 46.88 |
| 133 | Rofer or Waterproofer | 29.40 | 6.25 | 35.65 |
| 137 | Teledata Technician or Installer | 21.89 | 11.85 | 33.74 |
| 143 | Tuckpointer, Caulker or Cleaner | 35.25 | 13.15 | 48.40 |
| 144 | Underwater Diver (Except on Great Lakes) | 34.48 | 15.90 | 50.38 |
| 150 | Heavy Equipment Operator - ELECTRICAL LINE CONSTRUCTION ONLY | 34.43 | 15.24 | 49.67 |
| 151 | Light Equipment Operator -ELECTRICAL LINE CONSTRUCTION ONLY | 35.50 | 15.89 | 51.39 |

| Fringe Benefits Must Be Paid On <u>All</u> Hours Worked | | HOURLY BASIC RATE OF PAY | HOURLY FRINGE BENEFITS | TOTAL |
|--|--|---|---------------------------------------|--------------|
| CODE | TRADE OR OCCUPATION | \$ | \$ | \$ |
| 152 | Heavy Truck Driver - ELECTRICAL LINE CONSTRUCTION ONLY | 26.78 | 13.63 | 40.41 |
| 153 | Light Truck Driver - ELECTRICAL LINE CONSTRUCTION ONLY | 24.86 | 12.97 | 37.83 |
| 154 | Groundman - ELECTRICAL LINE CONSTRUCTION ONLY | 21.75 | 12.70 | 34.45 |

TRUCK DRIVERS

| Fringe Benefits Must Be Paid On <u>All</u> Hours Worked | | HOURLY BASIC RATE OF PAY | HOURLY FRINGE BENEFITS | TOTAL |
|--|---|---|---------------------------------------|--------------|
| CODE | TRADE OR OCCUPATION | \$ | \$ | \$ |
| 201 | Single Axle or Two Axle | 34.22 | 19.90 | 54.12 |
| 203 | Three or More Axle Future Increase(s): Add \$1.30/hr on 6/1/2014. Premium Increase(s): DOT PREMIUM: Pay two times the hourly basic rate on Sunday, New Year's Day, Memorial Day, Independence Day, Labor Day, Thanksgiving Day & Christmas Day. | 24.52 | 17.77 | 42.29 |
| 204 | Articulated, Euclid, Dumptor, Off Road Material Hauler Future Increase(s): Add \$1.75/hr on 6/1/14); Add \$1.25/hr on 6/1/15); Add \$1.30/hr on 6/1/16); Add \$1.25/hr on 6/1/17. Premium Increase(s): DOT PREMIUMS: 1) Pay two times the hourly basic rate on Sunday, New Year's Day, Memorial Day, Independence Day, Labor Day, Thanksgiving Day & Christmas Day. 2) Add \$1.50/hr night work premium. See DOT'S website for details about the applicability of this night work premium at: http://www.dot.wi.gov/busines/civilrights/laborwages/pwc.htm . | 29.27 | 20.40 | 49.67 |
| 205 | Pavement Marking Vehicle | 23.31 | 17.13 | 40.44 |
| 206 | Shadow or Pilot Vehicle | 34.22 | 19.90 | 54.12 |
| 207 | Truck Mechanic | 23.31 | 17.13 | 40.44 |

LABORERS

| Fringe Benefits Must Be Paid On <u>All</u> Hours Worked | | HOURLY BASIC RATE OF PAY | HOURLY FRINGE BENEFITS | TOTAL |
|--|---|---|---------------------------------------|--------------|
| CODE | TRADE OR OCCUPATION | \$ | \$ | \$ |
| 301 | General Laborer Future Increase(s): Add \$1.60/hr on 6/1/2014. Premium Increase(s): Add \$.10/hr for topman, air tool operator, vibrator or tamper operator (mechanical hand operated), chain saw operator and demolition burning torch laborer; Add \$.15/hr for bituminous worker (raker and luteman), formsetter (curb, sidewalk and pavement) and strike off man; Add \$.20/hr for blaster and powderman; Add \$.25/hr for bottomman; Add \$.35/hr for line and grade specialist; Add \$.45/hr for pipelayer. / DOT PREMIUMS: 1) Pay two times the hourly basic rate on Sunday, New Year's Day, Memorial Day, Independence Day, Labor Day, Thanksgiving Day & Christmas Day. 2) Add \$1.25/hr for work on projects involving temporary traffic control setup, for lane and shoulder closures, when work under artificial illumination conditions is necessary as required by the project provisions (including prep time prior to and/or cleanup after such time period). | 29.32 | 14.63 | 43.95 |
| 302 | Asbestos Abatement Worker | 24.36 | 14.44 | 38.80 |
| 303 | Landscaper Future Increase(s): Add \$1.60/hr on 6/1/14. Premium Increase(s): DOT PREMIUMS: 1) Pay two times the hourly basic rate on Sunday, New Year's Day, Memorial Day, Independence Day, Labor Day, Thanksgiving Day & Christmas Day. 2) Add \$1.25/hr for work on projects involving temporary traffic control setup, for lane and shoulder closures, when work under artificial illumination conditions is necessary as required by the project provisions (including prep time prior to and/or cleanup after such time period). | 29.32 | 14.63 | 43.95 |
| 304 | Flagperson or Traffic Control Person Future Increase(s): Add \$1.60/hr on 6/1/2014. Premium Increase(s): DOT PREMIUMS: 1) Pay two times the hourly basic rate on Sunday, New Year's Day, Memorial Day, Independence Day, Labor Day, Thanksgiving Day & Christmas Day. 2) Add \$1.25/hr when the Wisconsin Department of Transportation or responsible governing agency requires that work be performed at night under artificial illumination with traffic control and the work is completed after sunset and before sunrise. | 25.67 | 14.63 | 40.30 |
| 311 | Fiber Optic Laborer (Outside, Other Than Concrete Encased) | 18.31 | 12.67 | 30.98 |
| 314 | Railroad Track Laborer | 23.46 | 3.30 | 26.76 |

**HEAVY EQUIPMENT OPERATORS
AIRPORT PAVEMENT OR STATE HIGHWAY CONSTRUCTION**

| Fringe Benefits Must Be Paid On <u>All</u> Hours Worked | | HOURLY BASIC RATE OF PAY | HOURLY FRINGE BENEFITS | TOTAL |
|--|---|---|---------------------------------------|--------------|
| CODE | TRADE OR OCCUPATION | \$ | \$ | \$ |
| 531 | Crane, Tower Crane, Pedestal Tower or Derrick, With Boom, Leads &/or Jib Lengths Measuring 176 Ft or Over; Crane, Tower Crane, Pedestal Tower or Derrick, With or Without Attachments, With a Lifting Capacity of Over 100 Tons, Self-Erecting Tower Crane With a Lifting Capacity Of Over 4,000 Lbs., Crane With Boom Dollies; Traveling Crane (Bridge Type). Future Increase(s): Add \$1.75/hr on 6/1/2014); Add \$1.25/hr on 6/1/2015); Add \$1.30/hr on 6/1/2016); Add \$1.25/hr on 6/1/2017. Premium Increase(s): DOT PREMIUMS: 1) Pay two times the hourly basic rate on Sunday, New Year's Day, Memorial Day, Independence Day, Labor Day, Thanksgiving Day & Christmas Day. 2) Add \$1.50/hr night work premium. See DOT'S website for details about the applicability of this night work premium at: http://www.dot.wi.gov/business/civilrights/laborwages/pwc.htm . | 36.72 | 20.40 | 57.12 |
| 532 | Backhoe (Track Type) Having a Mfgr.'s Rated Capacity of 130,000 Lbs. or Over; Caisson Rig; Crane, Tower Crane, Portable Tower, Pedestal Tower or Derrick, With Boom, Leads &/or Jib Lengths Measuring 175 Ft or Under; Crane, Tower Crane, Portable Tower, Pedestal Tower or Derrick, With or Without Attachments, With a Lifting Capacity of 100 Tons or Under, Self-Erecting Tower Crane With A Lifting Capacity Of 4,000 Lbs., & Under; Dredge (NOT Performing Work on the Great Lakes); Licensed Boat Pilot (NOT Performing Work on the Great Lakes); Pile Driver. Future Increase(s): Add \$1.75/hr on 6/1/2014); Add \$1.25/hr on 6/1/2015); Add \$1.30/hr on 6/1/2016); Add \$1.25/hr on 6/1/2017. Premium Increase(s): DOT PREMIUMS: 1) Pay two times the hourly basic rate on Sunday, New Year's Day, Memorial Day, Independence Day, Labor Day, Thanksgiving Day & Christmas Day. 2) Add \$1.50/hr night work premium. See DOT'S website for details about the applicability of this night work premium at: http://www.dot.wi.gov/business/civilrights/laborwages/pwc.htm . | 36.22 | 20.40 | 56.62 |

Fringe Benefits Must Be Paid On All Hours Worked

| <u>CODE</u> | <u>TRADE OR OCCUPATION</u> | <u>HOURLY BASIC RATE OF PAY</u> \$ | <u>HOURLY FRINGE BENEFITS</u> \$ | <u>TOTAL</u> \$ |
|-------------|--|---------------------------------------|-------------------------------------|--------------------|
| 533 | <p>Air Track, Rotary or Percussion Drilling Machine &/or Hammers, Blaster; Asphalt Heater, Planer & Scarifier; Asphalt Milling Machine; Asphalt Screed; Automatic Subgrader (Concrete); Backhoe (Track Type) Having a Mfgr.'s Rated Capacity of Under 130,000 Lbs., Backhoe (Mini, 15,000 Lbs. & Under); Bituminous (Asphalt) Plant & Paver, Screed; Boatmen (NOT Performing Work on the Great Lakes); Boring Machine (Directional, Horizontal or Vertical); Bridge (Bidwell) Paver; Bulldozer or Endloader; Concrete Batch Plant, Batch Hopper; Concrete Breaker (Large, Auto, Vibratory/Sonic, Manual or Remote); Concrete Bump Cutter, Grinder, Planing or Grooving Machine; Concrete Conveyor System; Concrete Laser/Screed; Concrete Paver (Slipform); Concrete Pump, Concrete Conveyor (Rotec or Bidwell Type); Concrete Slipform Placer Curb & Gutter Machine; Concrete Spreader & Distributor; Crane (Carry Deck, Mini) or Truck Mounted Hydraulic Crane (10 Tons or Under); Crane Wlth a Lifting Capacity of 25 Tons or Under; Forestry Equipment, Timbco, Tree Shear, Tub Grinder, Processor; Gradall (Cruz-Aire Type); Grader or Motor Patrol; Grout Pump; Hydro-Blaster (10,000 PSI or Over); Loading Machine (Conveyor); Material or Stack Hoist; Mechanic or Welder; Milling Machine; Post Hole Digger or Driver; Roller (Over 5 Ton); Scraper (Self Propelled or Tractor Drawn) 5 cu yds or More Capacity; Shoulder Widener; Sideboom; Skid Rig; Stabilizing or Concrete Mixer (Self-Propelled or 14S or Over); Straddle Carrier or Travel Lift; Tractor (Scraper, Dozer, Pusher, Loader); Tractor or Truck Mounted Hydraulic Backhoe; Trencher (Wheel Type or Chain Type); Tube Finisher; Tugger (NOT Performing Work on the Great Lakes); Winches & A-Frames.</p> <p>Future Increase(s): Add \$1.75/hr on 6/1/2014); Add \$1.25/hr on 6/1/2015); Add \$1.30/hr on 6/1/2016); Add \$1.25/hr on 6/1/2017.</p> <p>Premium Increase(s): DOT PREMIUMS: 1) Pay two times the hourly basic rate on Sunday, New Year's Day, Memorial Day, Independence Day, Labor Day, Thanksgiving Day & Christmas Day. 2) Add \$1.50/hr night work premium. See DOT'S website for details about the applicability of this night work premium at: http://www.dot.wi.gov/business/civilrights/laborwages/pwc.htm.</p> | 35.72 | 20.40 | 56.12 |

| Fringe Benefits Must Be Paid On <u>All</u> Hours Worked | | HOURLY BASIC RATE OF PAY | HOURLY FRINGE BENEFITS | TOTAL |
|--|---|---|---------------------------------------|--------------|
| CODE | TRADE OR OCCUPATION | \$ | \$ | \$ |
| 534 | <p>Belting, Burlap, Texturing Machine; Broom or Sweeper; Compactor (Self-Propelled or Tractor Mounted, Towed & Light Equipment); Concrete Finishing Machine (Road Type); Environmental Burner; Farm or Industrial Type Tractor; Fireman (Asphalt Plant, Pile Driver & Derrick NOT Performing Work on the Great Lakes); Forklift; Greaser; Hoist (Tugger, Automatic); Jeep Digger; Joint Sawyer (Multiple Blade); Launch (NOT Performing Work on the Great Lakes); Lift Slab Machine; Mechanical Float; Mulcher; Power Subgrader; Robotic Tool Carrier (With or Without Attachments); Roller (Rubber Tire, 5 Ton or Under); Self Propelled Chip Spreader; Shouldering Machine; Skid Steer Loader (With or Without Attachments); Telehandler; Tining or Curing Machine.</p> <p>Future Increase(s): Add \$1.75/hr on 6/1/2014); Add \$1.25/hr on 6/1/2015); Add \$1.30/hr on 6/1/2016); Add \$1.25/hr on 6/1/2017.</p> <p>Premium Increase(s): DOT PREMIUMS: 1) Pay two times the hourly basic rate on Sunday, New Year's Day, Memorial Day, Independence Day, Labor Day, Thanksgiving Day & Christmas Day. 2) Add \$1.50/hr night work premium. See DOT'S website for details about the applicability of this night work premium at: http://www.dot.wi.gov/business/civilrights/laborwages/pwc.htm.</p> | 35.46 | 20.40 | 55.86 |
| 535 | <p>Air Compressor (&/or 400 CFM or Over); Air, Electric or Hydraulic Jacking System; Augers (Vertical & Horizontal); Automatic Belt Conveyor & Surge Bin; Boiler (Temporary Heat); Concrete Proportioning Plant; Crusher, Screening or Wash Plant; Generator (&/or 150 KW or Over); Heaters (Mechanical); High Pressure Utility Locating Machine (Daylighting Machine); Mudjack; Oiler; Prestress Machine; Pug Mill; Pump (3 Inch or Over) or Well Points; Rock, Stone Breaker; Screed (Milling Machine); Stump Chipper; Tank Car Heaters; Vibratory Hammer or Extractor, Power Pack.</p> <p>Future Increase(s): Add \$1.75/hr on 6/1/2014); Add \$1.25/hr on 6/1/2015); Add \$1.30/hr on 6/1/2016); Add \$1.25/hr on 6/1/2017.</p> <p>Premium Increase(s): DOT PREMIUMS: 1) Pay two times the hourly basic rate on Sunday, New Year's Day, Memorial Day, Independence Day, Labor Day, Thanksgiving Day & Christmas Day. 2) Add \$1.50/hr night work premium. See DOT'S website for details about the applicability of this night work premium at: http://www.dot.wi.gov/business/civilrights/laborwages/pwc.htm.</p> | 35.17 | 20.40 | 55.57 |
| 536 | Fiber Optic Cable Equipment. | 26.69 | 16.65 | 43.34 |
| 537 | Work Performed on the Great Lakes Including Diver; Wet Tender or Hydraulic Dredge Engineer. | 38.80 | 20.17 | 58.97 |
| 538 | Work Performed on the Great Lakes Including 70 Ton & Over Tug Operator; Assistant Hydraulic Dredge Engineer; Crane or Backhoe Operator; Hydraulic Dredge Leverman or Diver's Tender; Mechanic or Welder. | 38.80 | 20.17 | 58.97 |

| Fringe Benefits Must Be Paid On <u>All</u> Hours Worked | | | | |
|--|---|--|--|---------------------|
| <u>CODE</u> | <u>TRADE OR OCCUPATION</u> | <u>HOURLY BASIC RATE OF PAY</u> | <u>HOURLY FRINGE BENEFITS</u> | <u>TOTAL</u> |
| | | \$ | \$ | \$ |
| 539 | Work Performed on the Great Lakes Including Deck Equipment Operator or Machineryman (Maintains Cranes Over 50 Tons or Backhoes 115,000 Lbs. or More); Tug, Launch or Loader, Dozer or Like Equipment When Operated on a Barge, Breakwater Wall, Slip, Dock or Scow, Deck Machinery. | 34.50 | 20.04 | 54.54 |
| 540 | Work Performed on the Great Lakes Including Deck Equipment Operator, Machineryman or Fireman (Operates 4 Units or More or Maintains Cranes 50 Tons or Under or Backhoes 115,000 Lbs. or Under); Deck Hand, Deck Engineer or Assistant Tug Operator; Off Road Trucks-Great Lakes ONLY. | 34.50 | 20.04 | 54.54 |

| |
|--|
| LOCAL STREET OR MISCELLANEOUS PAVING CONSTRUCTION |
|--|

Includes roads, streets, alleys, trails, bridges, paths, racetracks, parking lots and driveways (except residential or agricultural), public sidewalks or other similar projects (excluding projects awarded by the Wisconsin Department of Transportation).

SKILLED TRADES

| Fringe Benefits Must Be Paid On <u>All</u> Hours Worked | | HOURLY BASIC RATE OF PAY | HOURLY FRINGE BENEFITS | TOTAL |
|---|--|--------------------------------|------------------------------|-------|
| <u>CODE</u> | <u>TRADE OR OCCUPATION</u> | \$ | \$ | \$ |
| 103 | Bricklayer, Blocklayer or Stonemason | 32.01 | 17.35 | 49.36 |
| 105 | Carpenter | 32.93 | 19.93 | 52.86 |
| 107 | Cement Finisher | 31.48 | 15.68 | 47.16 |
| 109 | Electrician | 31.27 | 22.81 | 54.08 |
| 111 | Fence Erector | 24.72 | 0.00 | 24.72 |
| 116 | Ironworker | 31.25 | 19.46 | 50.71 |
| 118 | Line Constructor (Electrical) | 38.25 | 17.31 | 55.56 |
| 124 | Painter | 24.50 | 16.60 | 41.10 |
| 125 | Pavement Marking Operator | 30.00 | 0.00 | 30.00 |
| 126 | Piledriver | 30.98 | 15.90 | 46.88 |
| 133 | Rofer or Waterproofer | 29.40 | 6.25 | 35.65 |
| 137 | Teledata Technician or Installer | 21.89 | 11.85 | 33.74 |
| 143 | Tuckpointer, Caulker or Cleaner | 35.25 | 13.15 | 48.40 |
| 144 | Underwater Diver (Except on Great Lakes) | 38.80 | 20.17 | 58.97 |
| 150 | Heavy Equipment Operator - ELECTRICAL LINE CONSTRUCTION ONLY | 34.43 | 15.24 | 49.67 |
| 151 | Light Equipment Operator -ELECTRICAL LINE CONSTRUCTION ONLY | 30.60 | 14.86 | 45.46 |
| 152 | Heavy Truck Driver - ELECTRICAL LINE CONSTRUCTION ONLY | 26.78 | 13.63 | 40.41 |
| 153 | Light Truck Driver - ELECTRICAL LINE CONSTRUCTION ONLY | 24.86 | 12.97 | 37.83 |
| 154 | Groundman - ELECTRICAL LINE CONSTRUCTION ONLY | 21.75 | 12.70 | 34.45 |

TRUCK DRIVERS

| Fringe Benefits Must Be Paid On <u>All</u> Hours Worked | | HOURLY BASIC RATE OF PAY | HOURLY FRINGE BENEFITS | TOTAL |
|---|----------------------------|--------------------------------|------------------------------|-------|
| <u>CODE</u> | <u>TRADE OR OCCUPATION</u> | \$ | \$ | \$ |
| 201 | Single Axle or Two Axle | 30.00 | 15.00 | 45.00 |

| Fringe Benefits Must Be Paid On <u>All</u> Hours Worked | | HOURLY BASIC RATE OF PAY | HOURLY FRINGE BENEFITS | TOTAL |
|--|--|---|---------------------------------------|--------------|
| CODE | TRADE OR OCCUPATION | \$ | \$ | \$ |
| 203 | Three or More Axle | 17.00 | 0.00 | 17.00 |
| 204 | Articulated, Euclid, Dumptor, Off Road Material Hauler | 32.89 | 18.96 | 51.85 |
| 205 | Pavement Marking Vehicle | 17.00 | 0.00 | 17.00 |
| 206 | Shadow or Pilot Vehicle | 30.00 | 15.00 | 45.00 |
| 207 | Truck Mechanic | 17.00 | 0.00 | 17.00 |

LABORERS

| Fringe Benefits Must Be Paid On <u>All</u> Hours Worked | | HOURLY BASIC RATE OF PAY | HOURLY FRINGE BENEFITS | TOTAL |
|--|--|---|---------------------------------------|--------------|
| CODE | TRADE OR OCCUPATION | \$ | \$ | \$ |
| 301 | General Laborer | 28.07 | 13.25 | 41.32 |
| 303 | Landscaper Future Increase(s): Add \$1.60/hr on 6/1/14. Premium Increase(s): DOT PREMIUMS: 1) Pay two times the hourly basic rate on Sunday, New Year's Day, Memorial Day, Independence Day, Labor Day, Thanksgiving Day & Christmas Day. 2) Add \$1.25/hr for work on projects involving temporary traffic control setup, for lane and shoulder closures, when work under artificial illumination conditions is necessary as required by the project provisions (including prep time prior to and/or cleanup after such time period). | 29.04 | 14.63 | 43.67 |
| 304 | Flagperson or Traffic Control Person | 24.70 | 10.72 | 35.42 |
| 311 | Fiber Optic Laborer (Outside, Other Than Concrete Encased) | 18.31 | 12.67 | 30.98 |
| 314 | Railroad Track Laborer | 23.46 | 3.30 | 26.76 |

**HEAVY EQUIPMENT OPERATORS
CONCRETE PAVEMENT OR BRIDGE WORK**

| Fringe Benefits Must Be Paid On <u>All</u> Hours Worked | | HOURLY BASIC RATE OF PAY | HOURLY FRINGE BENEFITS | TOTAL |
|--|--|---|---------------------------------------|--------------|
| CODE | TRADE OR OCCUPATION | \$ | \$ | \$ |
| 541 | Crane, Tower Crane, Pedestal Tower or Derrick, With or Without Attachments, With a Lifting Capacity of Over 100 Tons, Self-Erecting Tower Crane With a Lifting Capacity Of Over 4,000 Lbs., Crane With Boom Dollies; Crane, Tower Crane, Pedestal Tower or Derrick, With Boom, Leads &/or Jib Lengths Measuring 176 Ft or Over; Master Mechanic. Future Increase(s): Add \$1.75/hr on 6/1/2014); Add \$1.25/hr on 6/1/2015); Add \$1.30/hr on 6/1/2016); Add \$1.25/hr on 6/1/2017. Premium Increase(s): DOT PREMIUMS: 1) Pay two times the hourly basic rate on Sunday, New Year's Day, Memorial Day, Independence Day, Labor Day, Thanksgiving Day & Christmas Day. 2) Add \$1.50/hr night work premium. See DOT'S website for details about the applicability of this night work premium at: http://www.dot.wi.gov/business/civilrights/laborwages/pwc.htm . | 36.72 | 20.40 | 57.12 |
| 542 | Backhoe (Track Type) Having a Mfgr.'s Rated Capacity of 130,000 Lbs. or Over; Caisson Rig; Crane, Tower Crane, Portable Tower, Pedestal Tower or Derrick, With or Without Attachments, With a Lifting Capacity of 100 Tons or Under, Self-Erecting Tower Crane With a Lifting Capacity of 4,000 Lbs. & Under; Crane, Tower Crane Portable Tower, Pedestal Tower or Derrick, With Boom, Leads &/or Jib Lengths Measuring 175 Ft or Under; Dredge (NOT Performing Work on the Great Lakes); Licensed Boat Pilot (NOT Performing Work on the Great Lakes); Pile Driver. Future Increase(s): Add \$1.75/hr on 6/1/2014); Add \$1.25/hr on 6/1/2015); Add \$1.30/hr on 6/1/2016); Add \$1.25/hr on 6/1/2017. Premium Increase(s): DOT PREMIUMS: 1) Pay two times the hourly basic rate on Sunday, New Year's Day, Memorial Day, Independence Day, Labor Day, Thanksgiving Day & Christmas Day. 2) Add \$1.50/hr night work premium. See DOT'S website for details about the applicability of this night work premium at: http://www.dot.wi.gov/business/civilrights/laborwages/pwc.htm . | 36.22 | 20.40 | 56.62 |

| Fringe Benefits Must Be Paid On <u>All</u> Hours Worked | | HOURLY BASIC RATE OF PAY | HOURLY FRINGE BENEFITS | TOTAL |
|--|--|---|---------------------------------------|--------------|
| CODE | TRADE OR OCCUPATION | \$ | \$ | \$ |
| 543 | <p>Air Track, Rotary or Percussion Drilling Machine &/or Hammers, Blaster; Automatic Subgrader (Concrete); Backhoe (Track Type) Having a Mfgr.'s Rated Capacity of Under 130,000 Lbs., Backhoe (Mini, 15,000 Lbs. & Under); Boring Machine (Directional, Horizontal or Vertical); Bridge (Bidwell) Paver; Bulldozer or Endloader; Concrete Batch Plant, Batch Hopper; Concrete Breaker (Large, Auto, Vibratory/Sonic, Manual or Remote); Concrete Bump Cutter, Grinder, Planing or Grooving Machine; Concrete Conveyor System; Concrete Laser/Screed; Concrete Paver (Slipform); Concrete Pump, Concrete Conveyor (Rotec or Bidwell Type); Concrete Slipform Placer Curb & Gutter Machine; Concrete Spreader & Distributor; Crane (Carry Deck, Mini) or Truck Mounted Hydraulic Crane (10 Tons or Under); Crane With a Lifting Capacity of 25 Tons or Under; Forestry Equipment, Timbco, Tree Shear, Tub Grinder, Processor; Gradall (Cruz-Aire Type); Grader or Motor Patrol; Grout Pump; Hydro-Blaster (10,000 PSI or Over); Loading Machine (Conveyor); Manhoist; Material or Stack Hoist; Mechanic or Welder; Milling Machine; Post Hole Digger or Driver; Scraper (Self Propelled or Tractor Drawn) 5 cu yds or More Capacity; Shoulder Widener; Sideboom; Skid Rig; Stabilizing or Concrete Mixer (Self-Propelled or 14S or Over); Straddle Carrier or Travel Lift; Tractor (Scraper, Dozer, Pusher, Loader); Tractor or Truck Mounted Hydraulic Backhoe; Trencher (Wheel Type or Chain Type); Tube Finisher; Tugger (NOT Performing Work on the Great Lakes); Winches & A-Frames.</p> <p>Future Increase(s): Add \$1.75/hr on 6/1/2014); Add \$1.25/hr on 6/1/2015); Add \$1.30/hr on 6/1/2016); Add \$1.25/hr on 6/1/2017.</p> <p>Premium Increase(s): DOT PREMIUMS: 1) Pay two times the hourly basic rate on Sunday, New Year's Day, Memorial Day, Independence Day, Labor Day, Thanksgiving Day & Christmas Day. 2) Add \$1.50/hr night work premium. See DOT'S website for details about the applicability of this night work premium at: http://www.dot.wi.gov/business/civilrights/laborwages/pwc.htm.</p> | 35.72 | 20.40 | 56.12 |
| 544 | <p>Backfiller; Belting, Burlap, Texturing Machine; Broom or Sweeper; Compactor (Self-Propelled or Tractor Mounted, Towed & Light Equipment); Concrete Finishing Machine (Road Type); Environmental Burner; Farm or Industrial Type Tractor; Fireman (Pile Driver & Derrick NOT Performing Work on the Great Lakes); Forklift; Greaser; Jeep Digger; Joint Sawyer (Multiple Blade); Launch (NOT Performing Work on the Great Lakes); Lift Slab Machine; Mechanical Float; Mulcher; Power Subgrader; Robotic Tool Carrier (With or Without Attachments); Self Propelled Chip Spreader; Shouldering Machine; Skid Steer Loader (With or Without Attachments); Telehandler; Tining or Curing Machine.</p> | 33.96 | 19.79 | 53.75 |
| 545 | <p>Air Compressor (&/or 400 CFM or Over); Air, Electric or Hydraulic Jacking System; Automatic Belt Conveyor & Surge Bin; Boiler (Temporary Heat); Concrete Proportioning Plant; Crusher, Screening or Wash Plant; Generator (&/or 150 KW or Over); Heaters (Mechanical); High Pressure Utility Locating Machine (Daylighting Machine); Mudjack; Oiler; Prestress Machine; Pug Mill; Pump (3 Inch or Over) or Well Points; Rock, Stone Breaker; Screed (Milling Machine); Stump Chipper; Tank Car Heaters; Vibratory Hammer or Extractor, Power Pack.</p> | 30.32 | 18.46 | 48.78 |
| 546 | Fiber Optic Cable Equipment. | 26.69 | 16.65 | 43.34 |

| Fringe Benefits Must Be Paid On <u>All</u> Hours Worked | | HOURLY BASIC RATE OF PAY | HOURLY FRINGE BENEFITS | TOTAL |
|--|---|---|---------------------------------------|--------------|
| CODE | TRADE OR OCCUPATION | \$ | \$ | \$ |
| 547 | Work Performed on the Great Lakes Including Diver; Wet Tender or Hydraulic Dredge Engineer. | 38.80 | 20.17 | 58.97 |
| 548 | Work Performed on the Great Lakes Including 70 Ton & Over Tug Operator; Assistant Hydraulic Dredge Engineer; Crane or Backhoe Operator; Hydraulic Dredge Leverman or Diver's Tender; Mechanic or Welder. | 38.80 | 20.17 | 58.97 |
| 549 | Work Performed on the Great Lakes Including Deck Equipment Operator or Machineryman (Maintains Cranes Over 50 Tons or Backhoes 115,000 Lbs. or more); Tug, Launch or Loader, Dozer or Like Equipment When Operated on a Barge, Breakwater Wall, Slip, Dock or Scow, Deck Machinery. | 34.50 | 20.04 | 54.54 |
| 550 | Work Performed on the Great Lakes Including Deck Equipment Operator; Machineryman or Fireman (Operates 4 Units or More or Maintains Cranes 50 Tons or Under or Backhoes 115,000 Lbs. or Under); Deck Hand, Deck Engineer or Assistant Tug Operator; Off Road Trucks - Great Lakes ONLY. | 34.50 | 20.04 | 54.54 |

**HEAVY EQUIPMENT OPERATORS
ASPHALT PAVEMENT OR OTHER WORK**

| Fringe Benefits Must Be Paid On <u>All</u> Hours Worked | | HOURLY BASIC RATE OF PAY | HOURLY FRINGE BENEFITS | TOTAL |
|--|---|---|---------------------------------------|--------------|
| CODE | TRADE OR OCCUPATION | \$ | \$ | \$ |
| 551 | Crane, Tower Crane, Pedestal Tower or Derrick, With or Without Attachments, With a Lifting Capacity of Over 100 Tons, Self Erecting Tower Crane With a Lifting Capacity of Over 4,000 Lbs., Crane With Boom Dollies; Crane, Tower Crane, Pedestal Tower or Derrick, With Boom, Leads and/or Jib Lengths Measuring 176 Ft or Over; Master Mechanic. | 35.12 | 18.46 | 53.58 |
| 552 | Backhoe (Track Type) Having a Mfgr.'s Rated Capacity of 130,000 Lbs. or Over; Caisson Rig; Crane, Tower Crane, Portable Tower, Pedestal Tower or Derrick, With or Without Attachments, With a Lifting Capacity of 100 Tons or Under, Self-Erecting Tower Crane With a Lifting Capacity Of 4,000 Lbs. & Under; Crane, Tower Crane, Portable Tower, Pedestal Tower or Derrick, With Boom, Leads &/or Jib Lengths Measuring 175 Ft or Under; Dredge (NOT Performing Work on the Great Lakes); Licensed Boat Pilot (NOT Performing Work on the Great Lakes); Pile Driver. Future Increase(s): Add \$1.75/hr on 6/1/2014); Add \$1.25/hr on 6/1/2015); Add \$1.30/hr on 6/1/2016); Add \$1.25/hr on 6/1/2017. Premium Increase(s): DOT PREMIUMS: 1) Pay two times the hourly basic rate on Sunday, New Year's Day, Memorial Day, Independence Day, Labor Day, Thanksgiving Day & Christmas Day. 2) Add \$1.50/hr night work premium. See DOT'S website for details about the applicability of this night work premium at: http://www.dot.wi.gov/business/civilrights/laborwages/pwc.htm . | 36.22 | 20.40 | 56.62 |

| Fringe Benefits Must Be Paid On <u>All</u> Hours Worked | | HOURLY BASIC RATE OF PAY | HOURLY FRINGE BENEFITS | TOTAL |
|--|---|---|---------------------------------------|--------------|
| CODE | TRADE OR OCCUPATION | \$ | \$ | \$ |
| 553 | Air, Track, Rotary or Percussion Drilling Machine &/or Hammers, Blaster; Asphalt Heater, Planer & Scarifier; Asphalt Milling Machine; Asphalt Screed; Backhoe (Track Type) Having a Mfgr.'s Rated Capacity of Under 130,000 Lbs., Backhoe (Mini, 15,000 Lbs. & Under); Bituminous (Asphalt) Plant & Paver, Screed; Boring Machine (Directional, Horizontal or Vertical); Bulldozer or Endloader; Concrete Breaker (Large, Auto, Vibratory/Sonic, Manual or Remote); Concrete Conveyor System; Concrete Laser/Screed; Concrete Slipform Placer Curb & Gutter Machine; Crane (Carry Deck, Mini) or Truck Mounted Hydraulic Crane (10 Tons or Under); Crane With a Lifting Capacity of 25 Tons or Under; Forestry Equipment, Timbco, Tree Shear, Tub Grinder, Processor; Gradall (Cruz-Aire Type); Grader or Motor Patrol; Hydro-Blaster (10,000 PSI or Over); Loading Machine (Conveyor); Manhoist; Material or Stack Hoist; Mechanic or Welder; Milling Machine; Post Hole Digger or Driver; Railroad Track Rail Leveling Machine, Tie Placer, Extractor, Tamper, Stone Leveler or Rehabilitation Equipment; Roller (Over 5 Ton); Scraper (Self Propelled or Tractor Drawn) 5 cu yds or More Capacity; Shoulder Widener; Sideboom; Skid Rig; Stabilizing or Concrete Mixer (Self-Propelled or 14S or Over); Tractor (Scraper, Dozer, Pusher, Loader); Tractor or Truck Mounted Hydraulic Backhoe; Trencher (Wheel Type or Chain Type); Tube Finisher; Tugger (NOT Performing Work on the Great Lakes); Winches & A-Frames. | 32.89 | 18.96 | 51.85 |
| 554 | Backfiller; Broom or Sweeper; Compactor (Self-Propelled or Tractor Mounted, Towed & Light Equipment); Concrete Finishing Machine (Road Type); Environmental Burner; Farm or Industrial Type Tractor; Fireman (Asphalt Plant, Pile Driver & Derrick NOT Performing Work on the Great Lakes); Forklift; Greaser; Hoist (Tugger, Automatic); Jeep Digger; Joint Sawyer (Multiple Blade); Launch (NOT Performing Work on the Great Lakes); Lift Slab Machine; Mechanical Float; Mulcher; Power Subgrader; Robotic Tool Carrier (With or Without Attachments); Roller (Rubber Tire, 5 Ton or Under); Self-Propelled Chip Spreader; Shouldering Machine; Skid Steer Loader (With or Without Attachments); Telehandler. | 33.67 | 19.48 | 53.15 |
| 555 | Air Compressor (&/or 400 CFM or Over); Air, Electric or Hydraulic Jacking System; Augers (Vertical & Horizontal); Automatic Belt Conveyor & Surge Bin; Boiler (Temporary Heat); Crusher, Screening or Wash Plant; Generator (&/or 150 KW or Over); Heaters (Mechanical); High Pressure Utility Locating Machine (Daylighting Machine); Mudjack; Oiler; Prestress Machine; Pug Mill; Pump (3 Inch or Over) or Well Points; Rock, Stone Breaker; Screed (Milling Machine); Stump Chipper; Tank Car Heaters; Vibratory Hammer or Extractor, Power Pack. Future Increase(s): Add \$1.75/hr on 6/1/2014); Add \$1.25/hr on 6/1/2015); Add \$1.30/hr on 6/1/2016); Add \$1.25/hr on 6/1/2017. Premium Increase(s): DOT PREMIUMS: 1) Pay two times the hourly basic rate on Sunday, New Year's Day, Memorial Day, Independence Day, Labor Day, Thanksgiving Day & Christmas Day. 2) Add \$1.50/hr night work premium. See DOT'S website for details about the applicability of this night work premium at: http://www.dot.wi.gov/business/civilrights/laborwages/pwc.htm . | 35.17 | 20.40 | 55.57 |
| 556 | Fiber Optic Cable Equipment. | 26.69 | 16.65 | 43.34 |

| |
|---|
| RESIDENTIAL OR AGRICULTURAL CONSTRUCTION |
|---|

Includes single family houses or apartment buildings of no more than four (4) stories in height and all buildings, structures or facilities that are primarily used for agricultural or farming purposes, excluding commercial buildings. For classification purposes, the exterior height of a residential building, in terms of stories, is the primary consideration. All incidental items such as site work, driveways, parking lots, private sidewalks, private septic systems or sewer and water laterals connected to a public system and swimming pools are included within this definition. Residential buildings of five (5) stories and above are NOT included within this definition.

| |
|-----------------------|
| SKILLED TRADES |
|-----------------------|

| Fringe Benefits Must Be Paid On <u>All</u> Hours Worked | | HOURLY BASIC RATE OF PAY | HOURLY FRINGE BENEFITS | TOTAL |
|---|--|--------------------------------|------------------------------|-------|
| <u>CODE</u> | <u>TRADE OR OCCUPATION</u> | \$ | \$ | \$ |
| 101 | Acoustic Ceiling Tile Installer Future Increase(s): Add \$1.25/hr on 6/2/2014. | 33.68 | 19.81 | 53.49 |
| 102 | Boilermaker | 26.00 | 4.73 | 30.73 |
| 103 | Bricklayer, Blocklayer or Stonemason | 32.01 | 13.26 | 45.27 |
| 104 | Cabinet Installer | 22.00 | 1.05 | 23.05 |
| 105 | Carpenter | 30.48 | 3.24 | 33.72 |
| 106 | Carpet Layer or Soft Floor Coverer | 23.68 | 3.20 | 26.88 |
| 107 | Cement Finisher | 20.93 | 5.94 | 26.87 |
| 108 | Drywall Taper or Finisher | 22.50 | 0.88 | 23.38 |
| 109 | Electrician | 27.50 | 7.47 | 34.97 |
| 110 | Elevator Constructor | 42.86 | 23.84 | 66.70 |
| 111 | Fence Erector | 18.52 | 4.89 | 23.41 |
| 112 | Fire Sprinkler Fitter | 52.82 | 5.54 | 58.36 |
| 113 | Glazier | 38.03 | 13.42 | 51.45 |
| 114 | Heat or Frost Insulator | 30.00 | 0.00 | 30.00 |
| 115 | Insulator (Batt or Blown) | 19.00 | 14.33 | 33.33 |
| 116 | Ironworker | 31.25 | 19.46 | 50.71 |
| 117 | Lather | 30.48 | 3.24 | 33.72 |
| 119 | Marble Finisher | 26.89 | 19.18 | 46.07 |
| 120 | Marble Mason | 32.01 | 13.26 | 45.27 |
| 121 | Metal Building Erector | 17.00 | 3.82 | 20.82 |
| 123 | Overhead Door Installer | 12.00 | 0.00 | 12.00 |
| 124 | Painter | 20.00 | 4.22 | 24.22 |

| Fringe Benefits Must Be Paid On <u>All</u> Hours Worked | | HOURLY BASIC RATE OF PAY | HOURLY FRINGE BENEFITS | TOTAL |
|--|----------------------------------|---|---------------------------------------|--------------|
| CODE | TRADE OR OCCUPATION | \$ | \$ | \$ |
| 125 | Pavement Marking Operator | 30.00 | 0.00 | 30.00 |
| 129 | Plasterer | 25.00 | 0.00 | 25.00 |
| 130 | Plumber | 30.00 | 10.62 | 40.62 |
| 132 | Refrigeration Mechanic | 19.75 | 8.56 | 28.31 |
| 133 | Roofer or Waterproofer | 17.00 | 3.72 | 20.72 |
| 134 | Sheet Metal Worker | 21.03 | 3.40 | 24.43 |
| 135 | Steamfitter | 31.72 | 16.10 | 47.82 |
| 137 | Teledata Technician or Installer | 24.75 | 8.09 | 32.84 |
| 138 | Temperature Control Installer | 22.50 | 0.70 | 23.20 |
| 139 | Terrazzo Finisher | 26.89 | 19.18 | 46.07 |
| 140 | Terrazzo Mechanic | 30.20 | 18.42 | 48.62 |
| 141 | Tile Finisher | 23.77 | 16.50 | 40.27 |
| 142 | Tile Setter | 21.00 | 0.00 | 21.00 |
| 143 | Tuckpointer, Caulker or Cleaner | 32.50 | 0.02 | 32.52 |
| 146 | Well Driller or Pump Installer | 27.60 | 5.80 | 33.40 |
| 147 | Siding Installer | 20.18 | 0.00 | 20.18 |

TRUCK DRIVERS

| Fringe Benefits Must Be Paid On <u>All</u> Hours Worked | | HOURLY BASIC RATE OF PAY | HOURLY FRINGE BENEFITS | TOTAL |
|--|----------------------------|---|---------------------------------------|--------------|
| CODE | TRADE OR OCCUPATION | \$ | \$ | \$ |
| 201 | Single Axle or Two Axle | 28.05 | 4.16 | 32.21 |
| 203 | Three or More Axle | 18.00 | 2.37 | 20.37 |
| 205 | Pavement Marking Vehicle | 18.00 | 2.37 | 20.37 |
| 207 | Truck Mechanic | 19.00 | 1.85 | 20.85 |

LABORERS

| Fringe Benefits Must Be Paid On <u>All</u> Hours Worked | | HOURLY BASIC RATE OF PAY | HOURLY FRINGE BENEFITS | TOTAL |
|--|----------------------------|---|---------------------------------------|--------------|
| CODE | TRADE OR OCCUPATION | \$ | \$ | \$ |
| 301 | General Laborer | 18.14 | 10.16 | 28.30 |
| 302 | Asbestos Abatement Worker | 17.00 | 3.86 | 20.86 |

| Fringe Benefits Must Be Paid On <u>All</u> Hours Worked | | HOURLY BASIC RATE OF PAY | HOURLY FRINGE BENEFITS | TOTAL |
|--|--|---|---------------------------------------|--------------|
| CODE | TRADE OR OCCUPATION | \$ | \$ | \$ |
| 303 | Landscaper | 30.00 | 0.00 | 30.00 |
| 311 | Fiber Optic Laborer (Outside, Other Than Concrete Encased) | 18.31 | 12.67 | 30.98 |
| 315 | Final Construction Clean-Up Worker | 16.00 | 0.00 | 16.00 |

**HEAVY EQUIPMENT OPERATORS
RESIDENTIAL OR AGRICULTURAL CONSTRUCTION**

| Fringe Benefits Must Be Paid On <u>All</u> Hours Worked | | HOURLY BASIC RATE OF PAY | HOURLY FRINGE BENEFITS | TOTAL |
|--|--|---|---------------------------------------|--------------|
| CODE | TRADE OR OCCUPATION | \$ | \$ | \$ |
| 557 | Asphalt Heater, Planer & Scarifier; Asphalt Milling Machine; Asphalt Screed; Backhoe (Track Type); Backhoe (Mini, 15,000 Lbs. & Under); Bituminous (Asphalt) Plant & Paver, Screed; Boring Machine (Directional, Horizontal or Vertical); Bulldozer or Endloader; Concrete Breaker (Large, Auto, Vibratory/Sonic, Manual or Remote); Concrete Bump Cutter, Grinder, Planing or Grooving Machine; Concrete Conveyor System; Concrete Laser/Screed; Concrete Paver (Slipform); Concrete Pump, Concrete Conveyor (Rotec or Bidwell Type); Concrete Slipform Placer Curb & Gutter Machine; Concrete Spreader & Distributor; Crane (Carry Deck, Mini) or Truck Mounted Hydraulic Crane (10 Tons or Under); Crane With a Lifting Capacity of 25 Tons or Under; Crane, Shovel, Dragline, Clamshells; Forestry Equipment, TImbco, Tree Shear, Tub Grinder, Processor; Grader or Motor Patrol; Grout Pump; Hydro-Blaster (10,000 PSI or Over); Loading Machine (Conveyor); Manhoist; Material or Stack Hoist; Mechanic or Welder; Milling Machine; Roller (Over 5 Ton); Scraper (Self Propelled or Tractor Drawn) 5 cu yds or More Capacity; Shoulder Widener; Skid Rig; Stabilizing or Concrete Mixer (Self-Propelled or 14S or Over); Tractor (Scraper, Dozer, Pusher, Loader); Tractor or Truck Mounted Hydraulic Backhoe; Tractor or Truck Mounted Hydraulic Crane (10 Tons or Under); Trencher (Wheel Type or Chain Type); Winches & A-Frames. | 29.70 | 20.08 | 49.78 |
| 558 | Air Compressor (&/or 400 CFM or Over); Air, Electric or Hydraulic Jacking System; Backfiller; Belting, Burlap, Texturing Machine; Boiler (Temporary Heat); Broom or Sweeper; Compactor (Self-Propelled or Tractor Mounted, Towed & Light Equipment); Concrete Finishing Machine (Road Type); Farm or Industrial Type Tractor; Forklift; Generator (&/or 150 KW or Over); Heaters (Mechanical); High Pressure Utility Locating Machine (Daylighting Machine); Jeep Digger; Lift Slab Machine; Mulcher; Oiler; Post Hole Digger or Driver; Power Subgrader; Pump (3 Inch or Over) or Well Points; Robotic Tool Carrier (With or Without Attachments); Rock, Stone Breaker; Roller (Rubber Tire, 5 Tons or Under); Screed (Milling Machine); Self Propelled Chip Spreader; Shouldering Machine; Skid Steer Loader (With or Without Attachments); Stump Chipper; Telehandler; Vibratory Hammer or Extractor, Power Pack. | 29.70 | 16.00 | 45.70 |

***** END OF RATES *****