

Madison, Wisconsin

CITY OF MADISON

CITY ENGINEERING DIVISION

DEPARTMENT OF PUBLIC WORKS

PLAN OF PROPOSED IMPROVEMENT

INDEX OF SHEETS

SHEET NO.	TITLE
1	
EC-1	EROSION CONTROL PLAN
E1-E4	SEWER EASEMENT DETAILS
U-1	LAKESIDE SEWER MAIN
U-2	W LAKELAWN PL
U-3	E LAKELAWN PL
U4-U5	UTILITY SCHEDULES
T1-T2	TREE REMOVALS AND PROTECTIONS

NEAR WEST SANITARY SEWER RELOCATION ASSESSMENT DISTRICT-2014

CITY PROJECT NO. 53W1588
CONTRACT NO. 7276

PUBLIC IMPROVEMENT PROJECT APPROVED

FEB 25, 2014

BY THE COMMON COUNCIL
OF MADISON, WISCONSIN

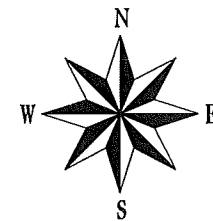
PUBLIC IMPROVEMENT DESIGN
APPROVED BY:

Christy Bachman 3-12-14
for City Engineer Date

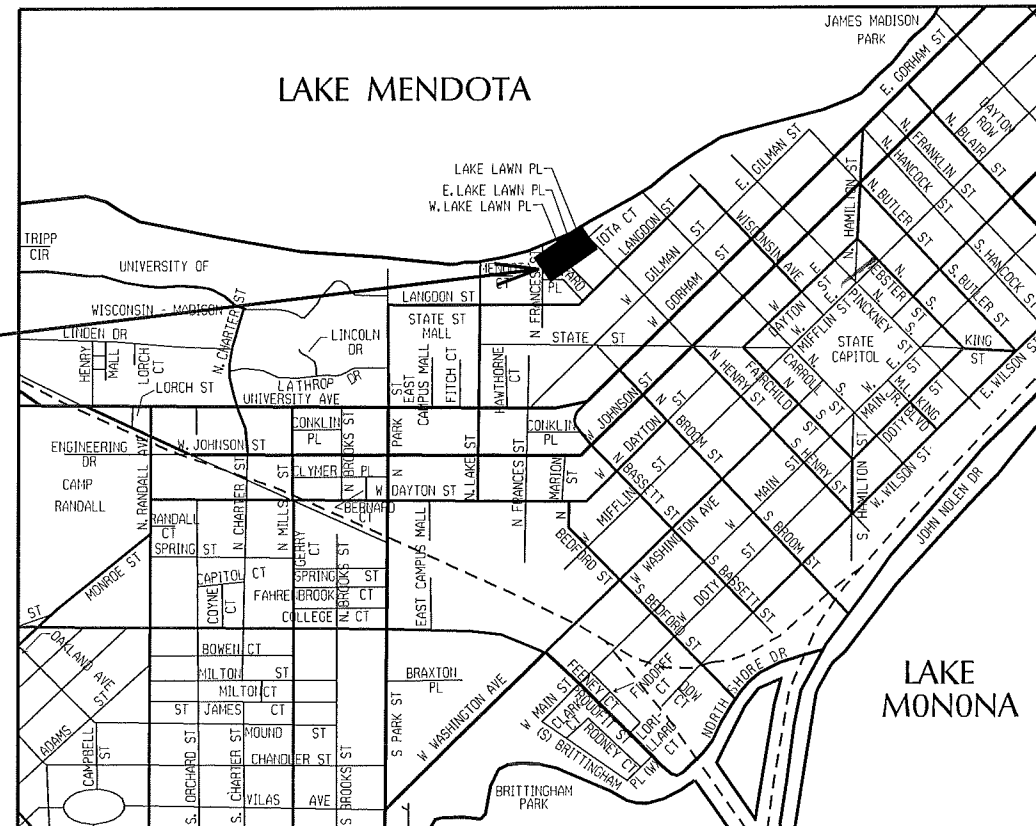
SEWERS
DESIGNED BY:



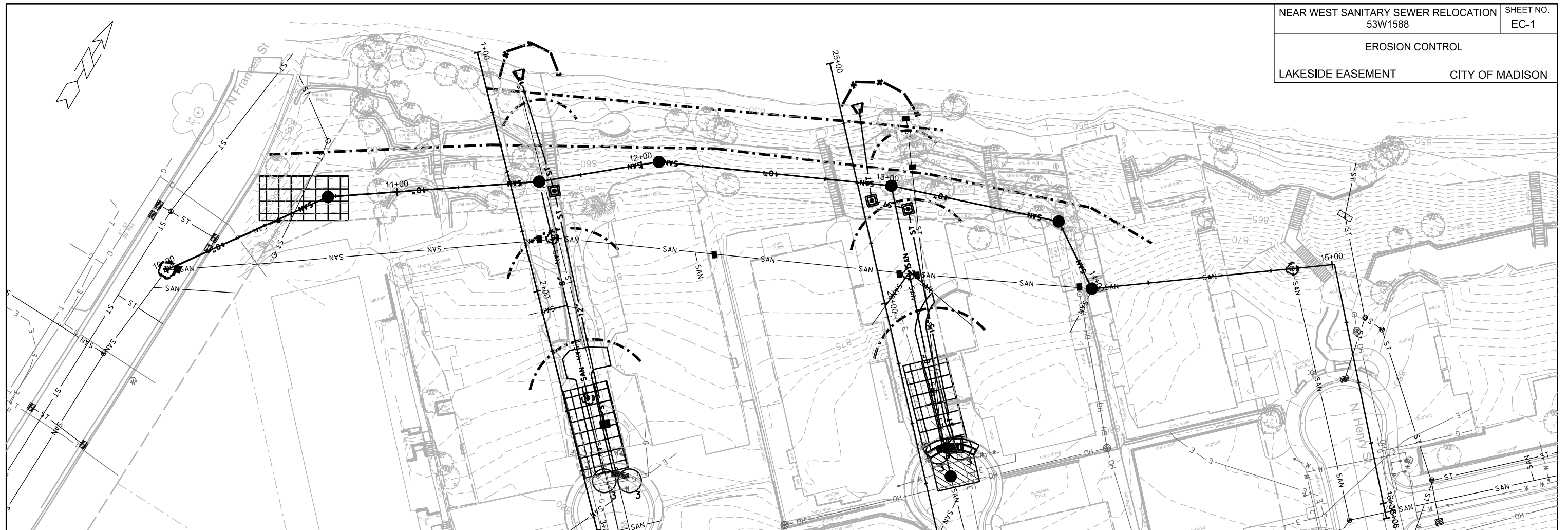
3-12-14



RECONSTRUCTION
PROJECT LOCATION



CONVENTIONAL SIGNS	
FIELD VERIFY ALL UTILITY LOCATIONS	
GAS	— G —
STORM SEWER	— ST —
SANITARY SEWER	— SAN —
WATER	— W —
OVERHEAD ELECTRIC	— OH —
POWER POLE	⊡
ADA COMPLIANT RAMP W/ DETECTABLE WARNING FIELD	□
COMBUSTIBLE FLUIDS	⚠



EROSION CONTROL NOTES:

PROVISION OF AN EROSION CONTROL IMPLEMENTATION PLAN BY THE CONTRACTOR AT THE PRE-CON IS REQUIRED.

THE CONTRACTOR SHALL PROVIDE A CONSTRUCTION DEWATERING PLAN AS PART OF THE EROSION CONTROL IMPLEMENTATION PLAN.

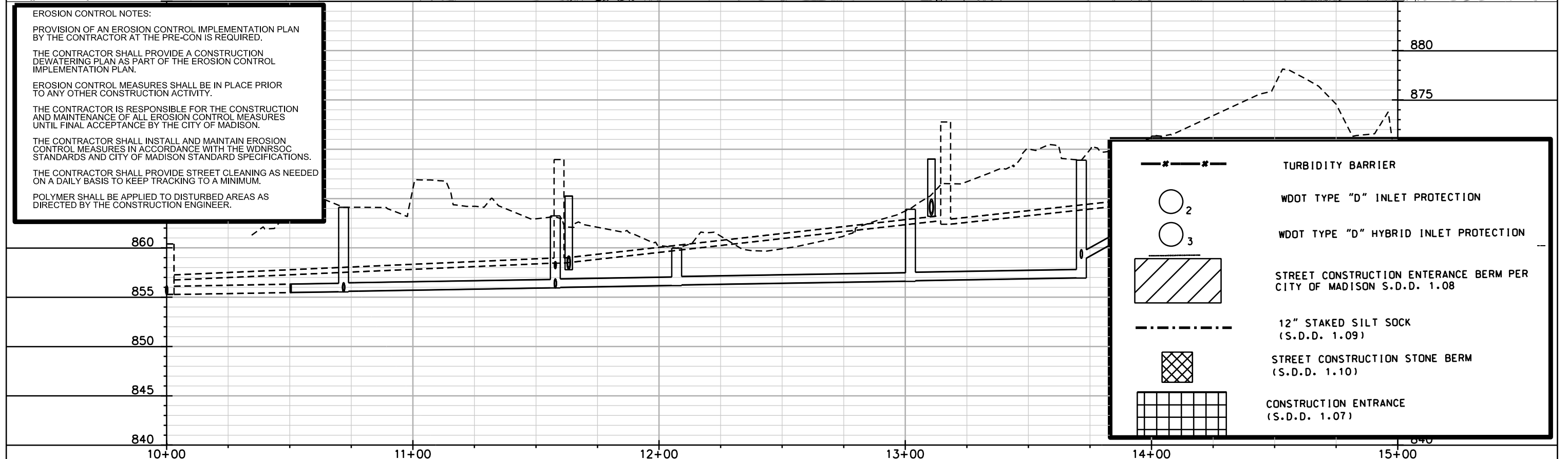
EROSION CONTROL MEASURES SHALL BE IN PLACE PRIOR TO ANY OTHER CONSTRUCTION ACTIVITY.

THE CONTRACTOR IS RESPONSIBLE FOR THE CONSTRUCTION AND MAINTENANCE OF ALL EROSION CONTROL MEASURES UNTIL FINAL ACCEPTANCE BY THE CITY OF MADISON.

THE CONTRACTOR SHALL INSTALL AND MAINTAIN EROSION CONTROL MEASURES IN ACCORDANCE WITH THE WDMRSOC STANDARDS AND CITY OF MADISON STANDARD SPECIFICATIONS.

THE CONTRACTOR SHALL PROVIDE STREET CLEANING AS NEEDED ON A DAILY BASIS TO KEEP TRACKING TO A MINIMUM.

POLYMER SHALL BE APPLIED TO DISTURBED AREAS AS DIRECTED BY THE CONSTRUCTION ENGINEER.



	TURBIDITY BARRIER
	WDOT TYPE "D" INLET PROTECTION
	WDOT TYPE "D" HYBRID INLET PROTECTION
	STREET CONSTRUCTION ENTRANCE BERM PER CITY OF MADISON S.D.D. 1.08
	12" STAKED SILT SOCK (S.D.D. 1.09)
	STREET CONSTRUCTION STONE BERM (S.D.D. 1.10)
	CONSTRUCTION ENTRANCE (S.D.D. 1.07)

PLOT SCALE: _____

REV. DATE: _____

ORIGINATOR: CITY OF MADISON, STREETS DIVISION



Madison, Wisconsin

RELOCATION ORDER APPROVED BY THE COMMON COUNCIL

12-12-13

Jean Tretow Schmitz for
CITY CLERK DATE

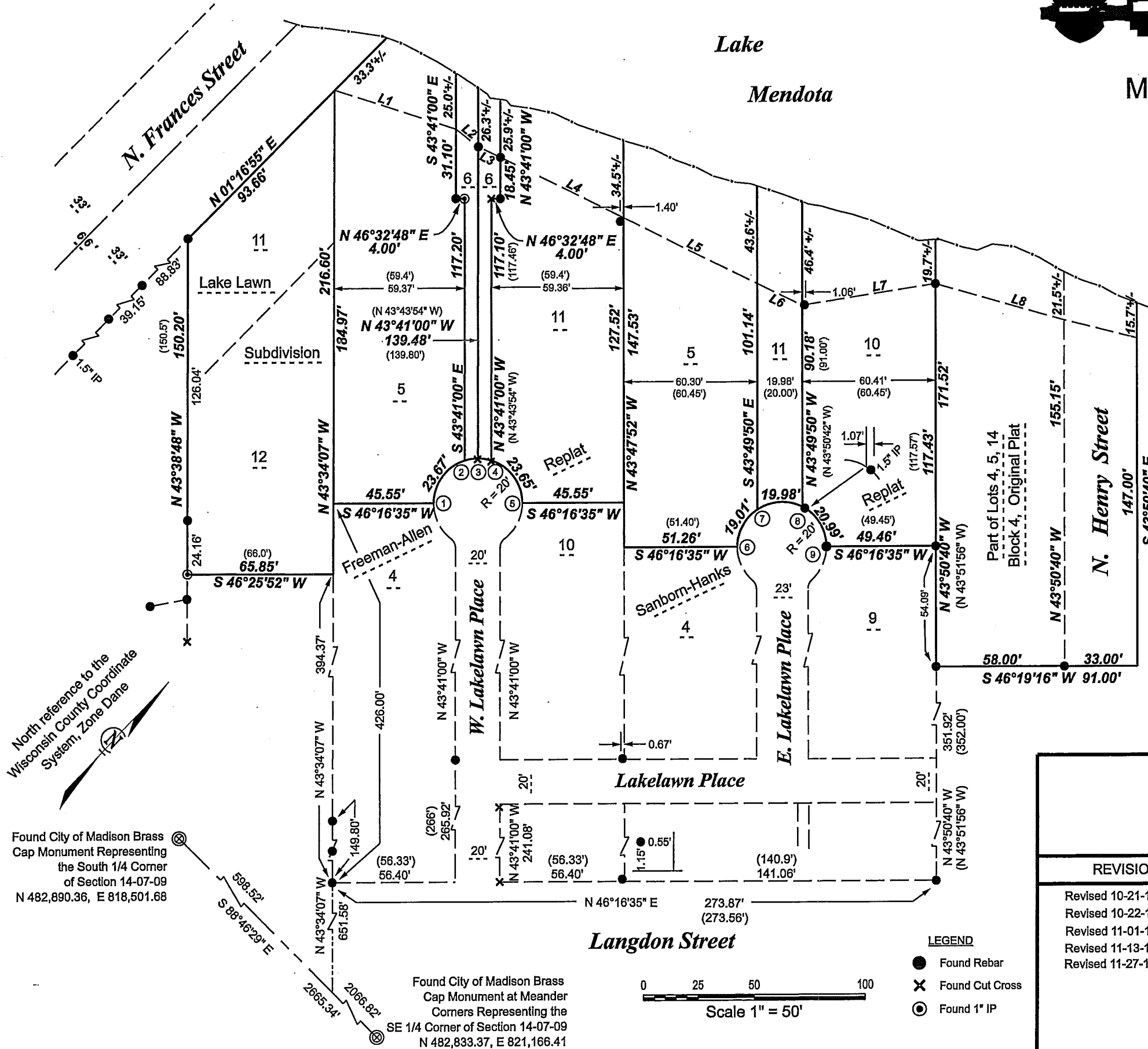
RELOCATION ORDER APPROVED BY THE BOARD OF PUBLIC WORKS:

Cheryl Bachman 12-12-13
EXECUTIVE SECRETARY DATE

RELOCATION ORDER APPROVED BY THE PLAN COMMISSION:

[Signature] for 12/12/13
EXECUTIVE SECRETARY DATE

Lake Mendota



Pt - Pt	Radius	Bearing	Chord	Central Angle
01-02	20.00'	S 07°25'54" E	23.67'	72°34'58"
02-03	20.00'	S 37°35'18" W	6.07'	17°27'28"
03-04	20.00'	S 55°02'45" W	6.07'	17°27'28"
04-05	20.00'	N 79°58'28" W	23.65'	72°30'06"
01-03	20.00'	N 01°17'50" E	28.29'	90°02'26"
06-07	20.00'	S 15°20'26" E	19.01'	56°45'58"
07-08	20.00'	S 43°00'36" W	19.98'	59°56'06"
08-09	20.00'	N 75°22'22" W	20.99'	63°17'56"

L-1	N 63°56'20" E	57.90'
L-2	N 84°40'45" E	12.75'
L-3	N 72°15'40" E	11.12'
L-4	N 72°22'52" E	61.55'
L-5	N 72°27'54" E	67.21'
L-6	N 72°27'54" E	22.25'
L-7	N 37°26'30" E	61.13'
L-8	N 61°23'18" E	84.31'

CITY OF MADISON RELOCATION ORDER

REVISIONS

- Revised 10-21-13 TT
- Revised 10-22-13 TT
- Revised 11-01-13 TT
- Revised 11-13-13 TT
- Revised 11-27-13 TT

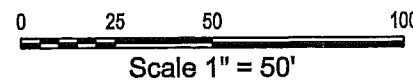
PLAT OF LAND INTERESTS REQUIRED FOR THE CONSTRUCTION AND MAINTENANCE OF IMPROVEMENTS FOR SANITARY SEWER ALONG LAKE MENDOTA FROM N. HENRY STREET TO N. FRANCES STREET LOCATED IN THE SE 1/4 OF THE SW 1/4 (PART OF GOVT. LOT 3) AND THE SW 1/4 OF THE SE 1/4 (PART OF GOVT. LOT 2) OF SECTION 14, TOWN 07 NORTH, RANGE 09 EAST, CITY OF MADISON, DANE COUNTY, WISCONSIN.

CITY ENGINEERING DIVISION
PROJECT NO. 53W1588
REAL ESTATE PROJECT NOS. 10112

SHEET 1 OF 4 SHEETS

LEGEND

- Found Rebar
- ✕ Found Cut Cross
- ⊙ Found 1" IP



North reference to the Wisconsin County Coordinate System, Zone Dane

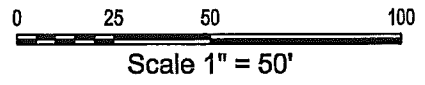
Found City of Madison Brass Cap Monument Representing the South 1/4 Corner of Section 14-07-09
N 482,890.36, E 818,501.68

Found City of Madison Brass Cap Monument at Meander Corners Representing the SE 1/4 Corner of Section 14-07-09
N 482,833.37, E 821,166.41

County Clerk File No **1681**



MADISON, WISCONSIN



RELOCATION ORDER APPROVED BY THE COMMON COUNCIL

CITY CLERK

DATE

RELOCATION ORDER APPROVED BY THE BOARD OF PUBLIC WORKS:

EXECUTIVE SECRETARY

DATE

RELOCATION ORDER APPROVED BY THE PLAN COMMISSION:

EXECUTIVE SECRETARY

DATE

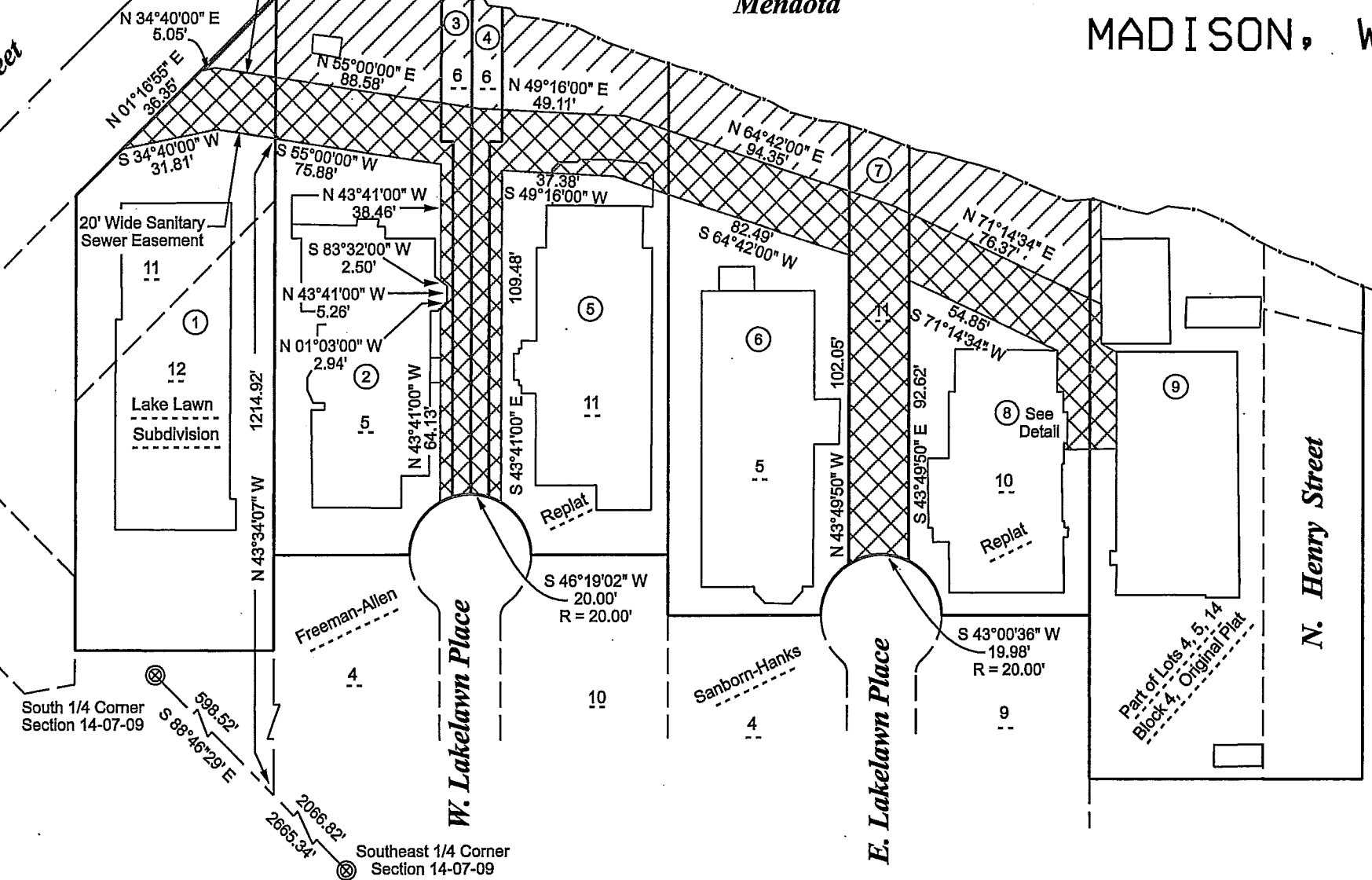
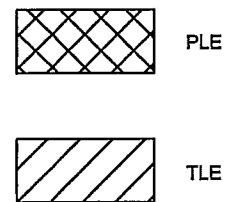
N. Frances Street

Lake Mendota

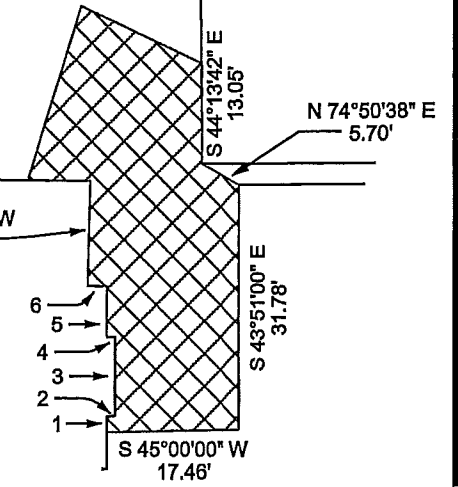
N. Henry Street

W. Lakelawn Place

E. Lakelawn Place



- 1 N 42°58'50" W, 2.20'
- 2 N 47°01'10" E, 1.00'
- 3 N 42°58'50" W, 10.18'
- 4 S 47°01'10" W, 1.50'
- 5 N 42°58'50" W, 6.64'
- 6 S 47°01'10" W, 2.20'



SCHEDULE OF INTERESTS REQUIRED

PARCEL #	ADDRESS	OWNER NAME	PARCEL NUMBER	FEE AREA REQUIRED	PERMANENT EASEMENT AREA	TEMPORARY EASEMENT AREA
①	633 N. Frances Street	The French House, Inc.	251-0709-144-1901-9		773 square feet	328 square feet
②	244 W. Lakelawn Place	Madison Community Co-Operative	251-0709-144-1922-5		1,575 square feet	2,537 square feet
③	250 W. Lakelawn Place	240 W. Lakelawn Place, LLC	251-0709-144-1943-1		819 square feet	408 square feet
④	249 W. Lakelawn Place	222 Langdon, LLC and Twekenberg 232, LLC	251-0709-144-1945-7		808 square feet	354 square feet
⑤	233 W. Lakelawn Place	Alpha Gamma Rho Educational Foundation of Iota Chapter, Inc.	251-0709-144-1923-3		1,595 square feet	1,482 square feet
⑥	222 E. Lakelawn Place	1998 Jerome J. and Carol M. Mullins Joint Revocable Trust	251-0709-144-1926-7		1,270 square feet	1,278 square feet
⑦	230 E. Lakelawn Place	The Estate of Lucien S. Hanks	251-0709-144-1944-9		2,341 square feet	432 square feet
⑧	225 E. Lakelawn Place	Madison Community Cooperative	251-0709-144-1927-5		1,607 square feet	1,630 square feet
⑨	640 N. Henry Street	JDM Properties, LLC	251-0709-144-1941-5		356 square feet	124 square feet

CITY OF MADISON
RELOCATION ORDER

REVISIONS

Revised 10-21-13 TT
Revised 10-22-13 TT
Revised 11-01-13 TT
Revised 11-13-13 TT
Revised 11-27-13 TT

PLAT OF LAND INTERESTS REQUIRED FOR THE CONSTRUCTION AND MAINTENANCE OF IMPROVEMENTS FOR SANITARY SEWER ALONG LAKE MENDOTA FROM N. HENRY STREET TO N. FRANCES STREET LOCATED IN THE SE 1/4 OF THE SW 1/4 (PART OF GOVT. LOT 3) AND THE SW 1/4 OF THE SE 1/4 (PART OF GOVT. LOT 2) OF SECTION 14, TOWN 07 NORTH, RANGE 09 EAST, CITY OF MADISON, DANE COUNTY, WISCONSIN.

CITY ENGINEERING DIVISION
PROJECT NO. 53W1588
REAL ESTATE PROJECT NOS. 10112

Lake Mendota



Madison, Wisconsin

RELOCATION ORDER APPROVED
BY THE COMMON COUNCIL

CITY CLERK _____ DATE _____

RELOCATION ORDER APPROVED
BY THE BOARD OF PUBLIC WORKS:

EXECUTIVE SECRETARY _____ DATE _____

RELOCATION ORDER APPROVED
BY THE PLAN COMMISSION:

EXECUTIVE SECRETARY _____ DATE _____

N. Frances Street

Lake Lawn

Subdivision

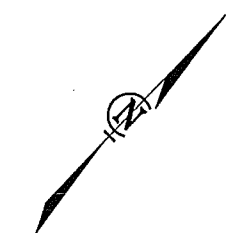
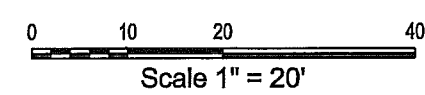
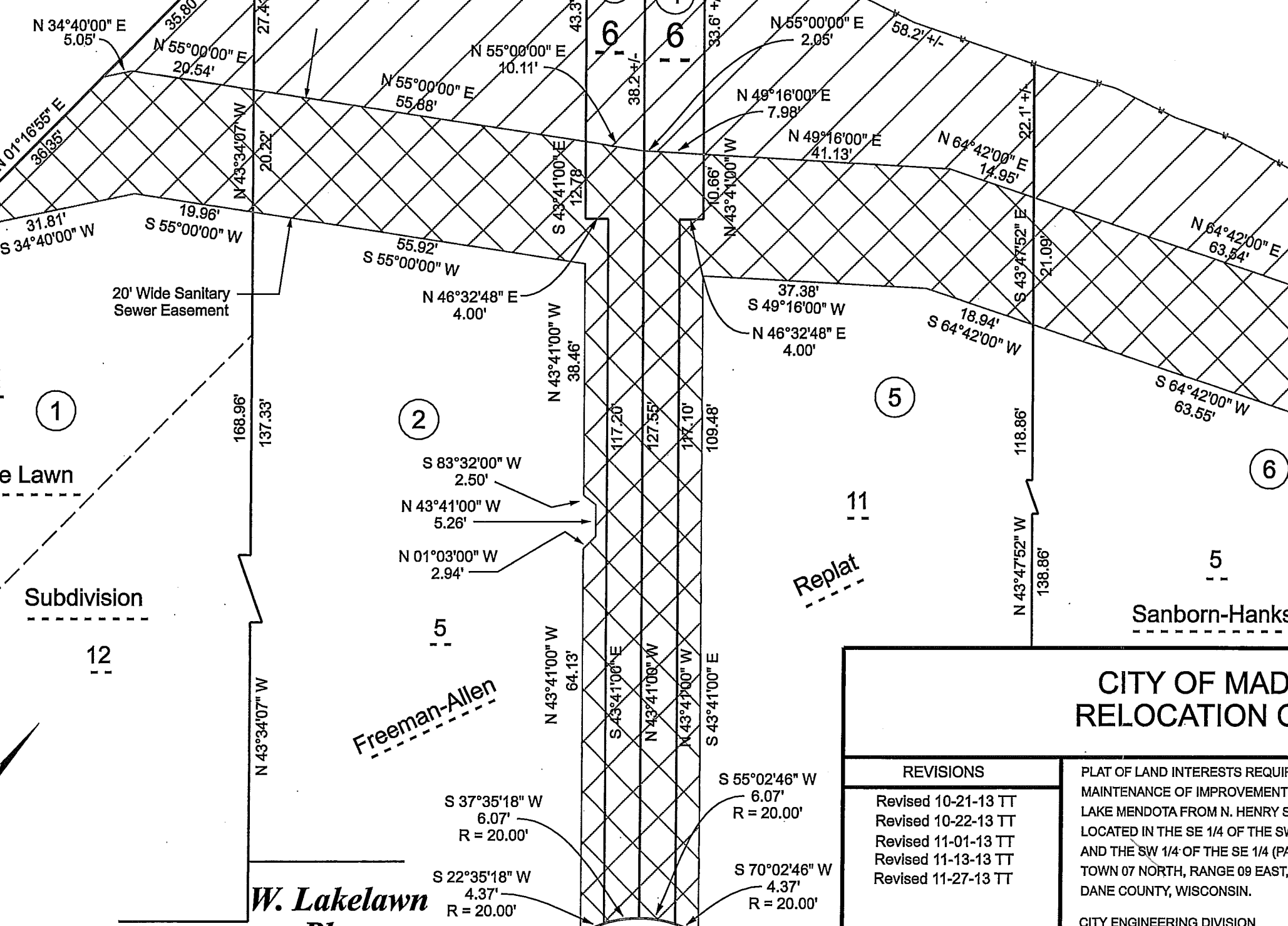
Freeman-Allen

W. Lakelawn Place

Replat

Sanborn-Hanks

Replat



CITY OF MADISON RELOCATION ORDER

REVISIONS

- Revised 10-21-13 TT
- Revised 10-22-13 TT
- Revised 11-01-13 TT
- Revised 11-13-13 TT
- Revised 11-27-13 TT

PLAT OF LAND INTERESTS REQUIRED FOR THE CONSTRUCTION AND MAINTENANCE OF IMPROVEMENTS FOR SANITARY SEWER ALONG LAKE MENDOTA FROM N. HENRY STREET TO N. FRANCES STREET LOCATED IN THE SE 1/4 OF THE SW 1/4 (PART OF GOVT. LOT 3) AND THE SW 1/4 OF THE SE 1/4 (PART OF GOVT. LOT 2) OF SECTION 14, TOWN 07 NORTH, RANGE 09 EAST, CITY OF MADISON, DANE COUNTY, WISCONSIN.

CITY ENGINEERING DIVISION
PROJECT NO. 53W1588
REAL ESTATE PROJECT NOS. 10112



Madison, Wisconsin

Lake Mendota

RELOCATION ORDER APPROVED BY THE COMMON COUNCIL

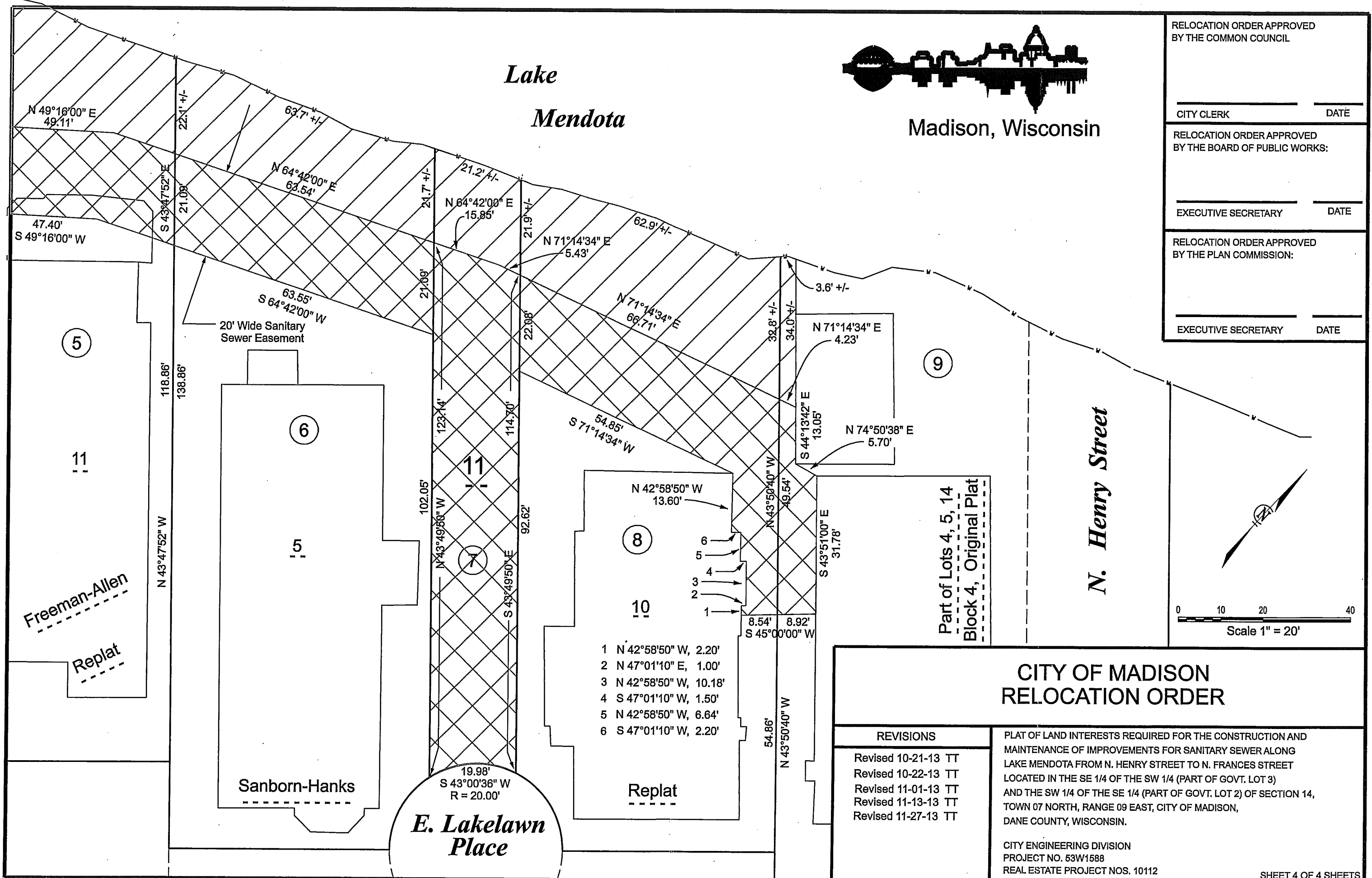
CITY CLERK _____ DATE _____

RELOCATION ORDER APPROVED BY THE BOARD OF PUBLIC WORKS:

EXECUTIVE SECRETARY _____ DATE _____

RELOCATION ORDER APPROVED BY THE PLAN COMMISSION:

EXECUTIVE SECRETARY _____ DATE _____



CITY OF MADISON RELOCATION ORDER

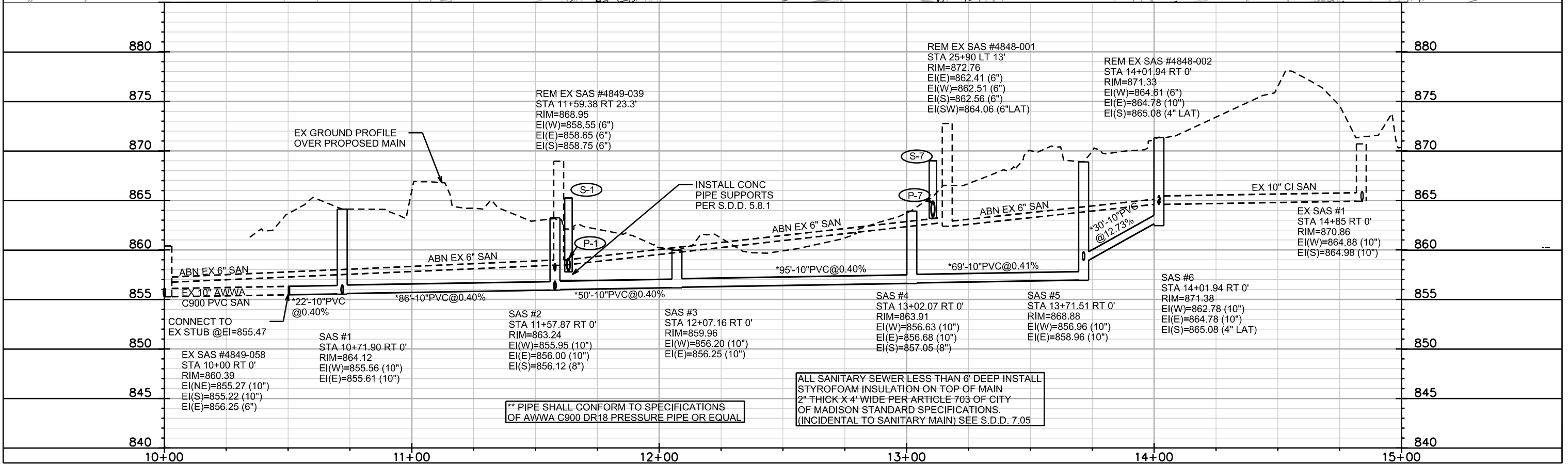
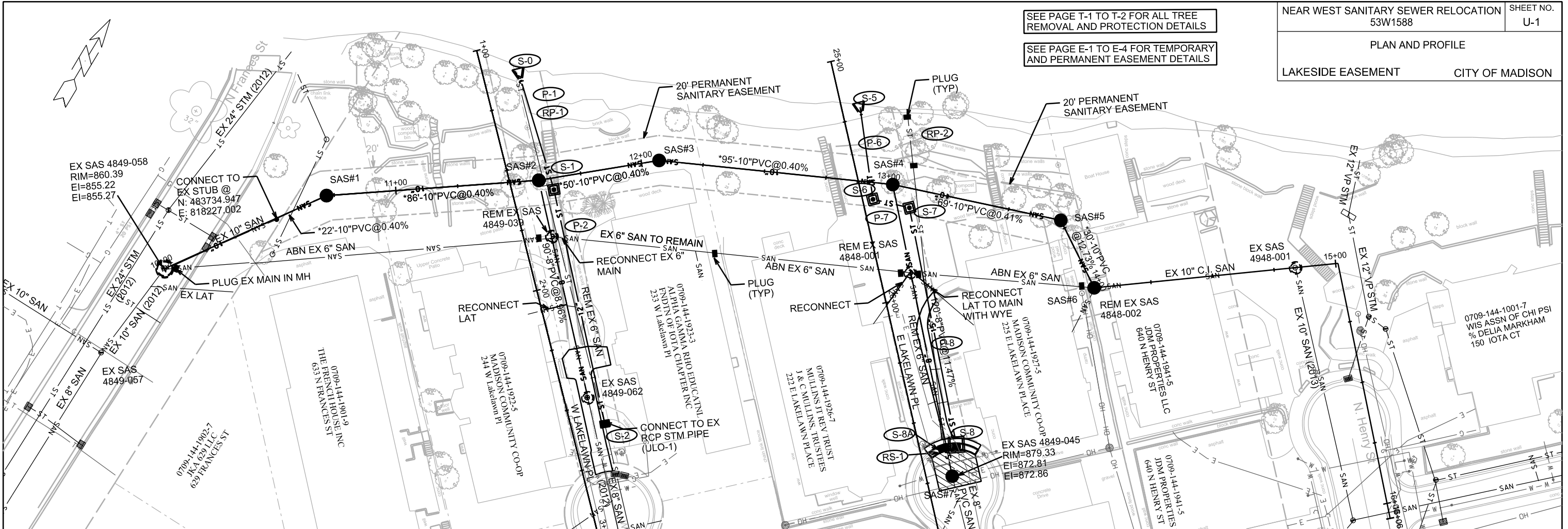
REVISIONS	
Revised 10-21-13	TT
Revised 10-22-13	TT
Revised 11-01-13	TT
Revised 11-13-13	TT
Revised 11-27-13	TT

PLAT OF LAND INTERESTS REQUIRED FOR THE CONSTRUCTION AND MAINTENANCE OF IMPROVEMENTS FOR SANITARY SEWER ALONG LAKE MENDOTA FROM N. HENRY STREET TO N. FRANCES STREET LOCATED IN THE SE 1/4 OF THE SW 1/4 (PART OF GOVT. LOT 3) AND THE SW 1/4 OF THE SE 1/4 (PART OF GOVT. LOT 2) OF SECTION 14, TOWN 07 NORTH, RANGE 09 EAST, CITY OF MADISON, DANE COUNTY, WISCONSIN.

CITY ENGINEERING DIVISION
 PROJECT NO. 53W1588
 REAL ESTATE PROJECT NOS. 10112

SEE PAGE T-1 TO T-2 FOR ALL TREE
REMOVAL AND PROTECTION DETAILS

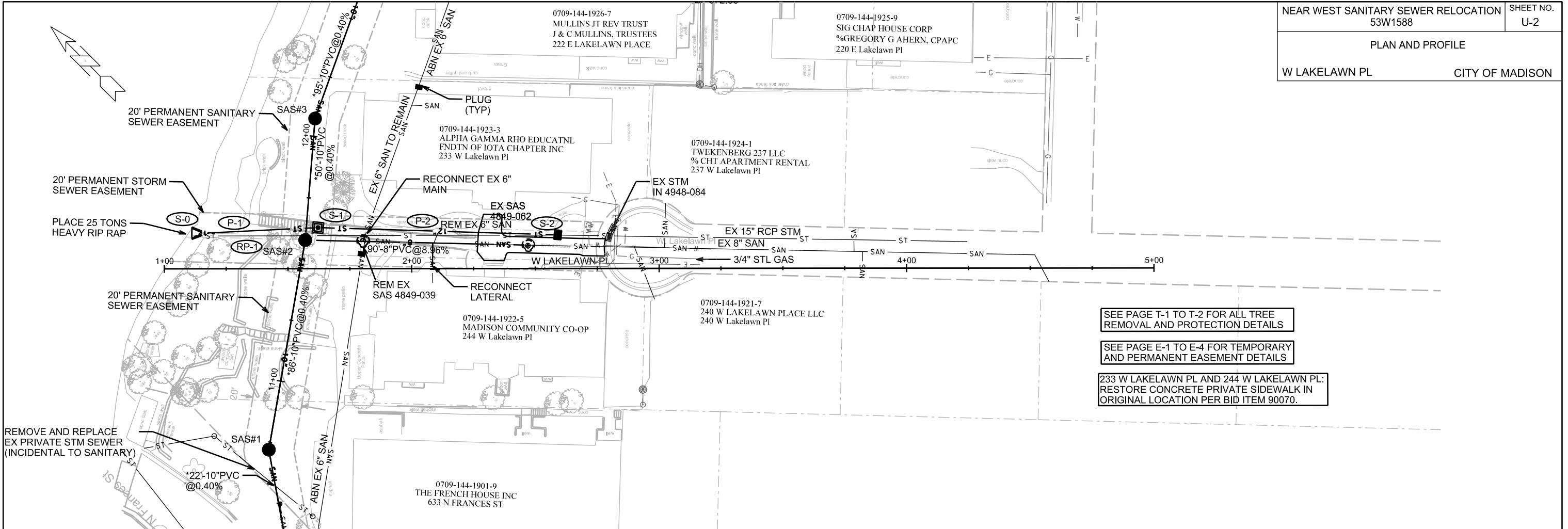
SEE PAGE E-1 TO E-4 FOR TEMPORARY
AND PERMANENT EASEMENT DETAILS



PLOT SCALE: _____

REV. DATE: _____

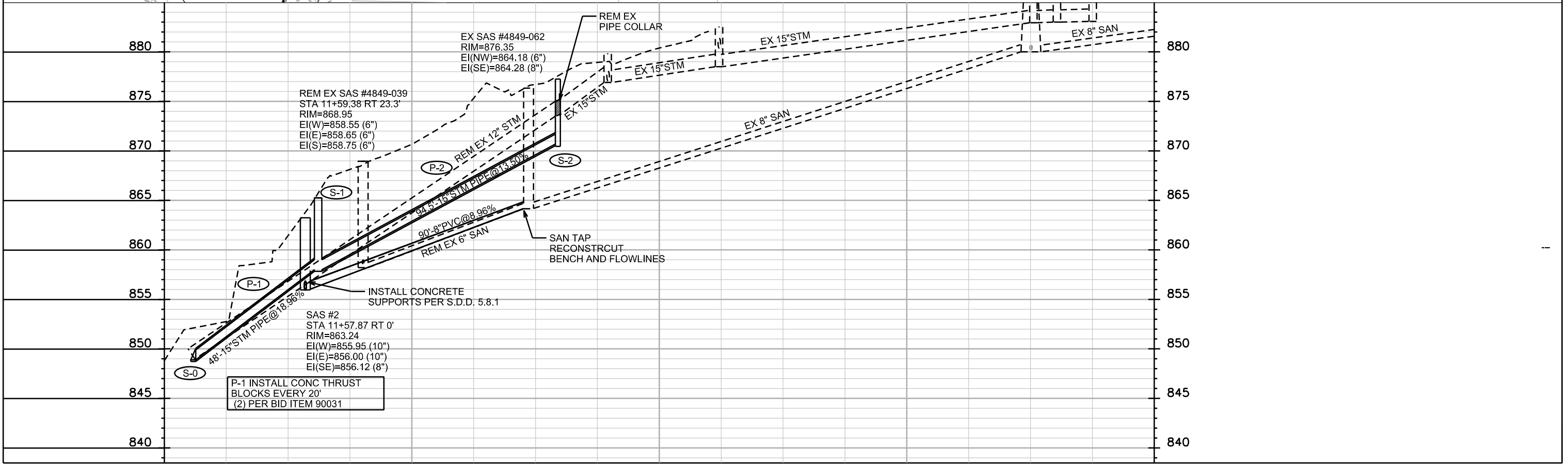
ORIGINATOR: CITY OF MADISON, STREETS DIVISION



SEE PAGE T-1 TO T-2 FOR ALL TREE REMOVAL AND PROTECTION DETAILS

SEE PAGE E-1 TO E-4 FOR TEMPORARY AND PERMANENT EASEMENT DETAILS

233 W LAKELAWN PL AND 244 W LAKELAWN PL:
RESTORE CONCRETE PRIVATE SIDEWALK IN ORIGINAL LOCATION PER BID ITEM 90070.

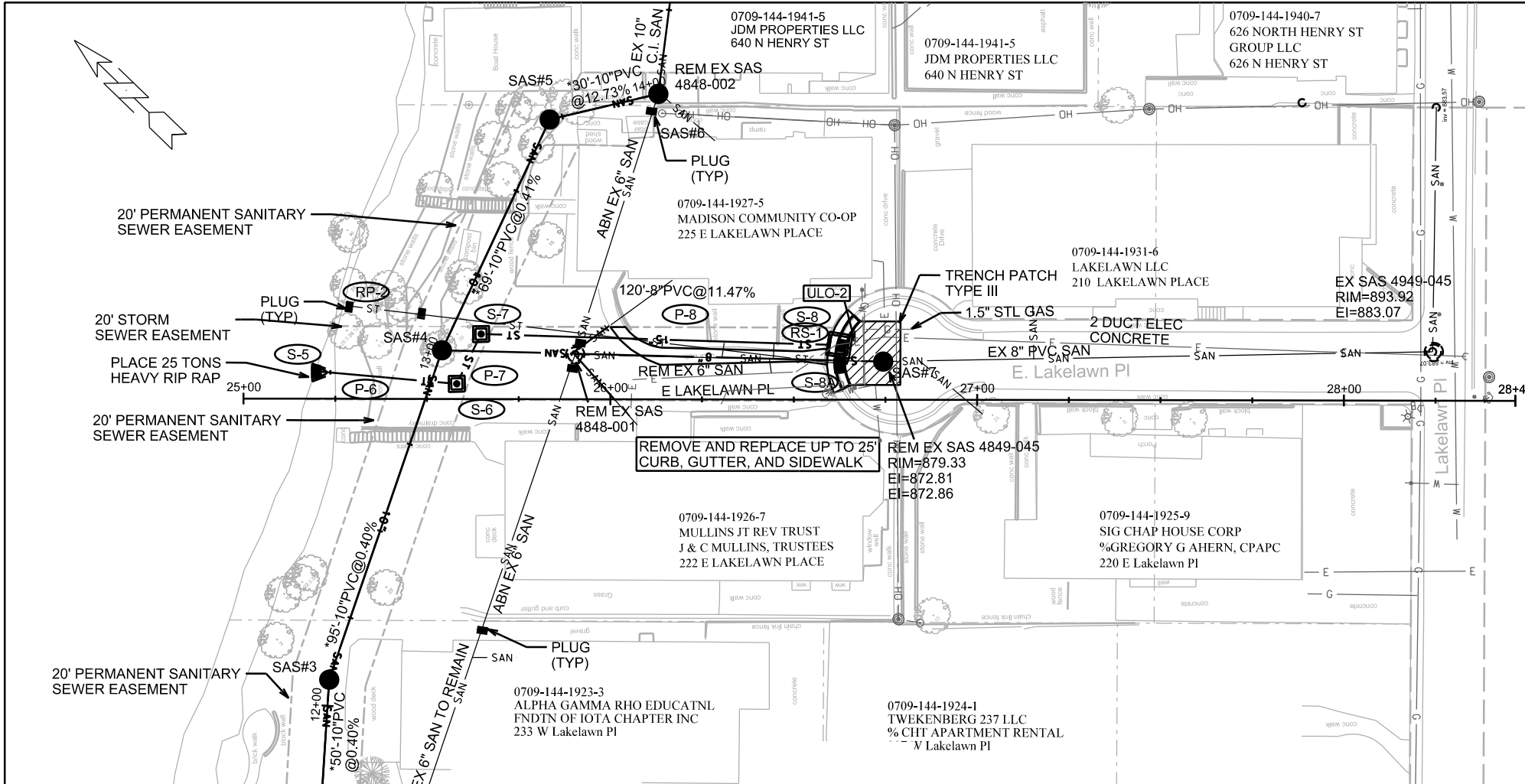


PLOT SCALE: _____

PLOT NAME: _____

REV. DATE: _____

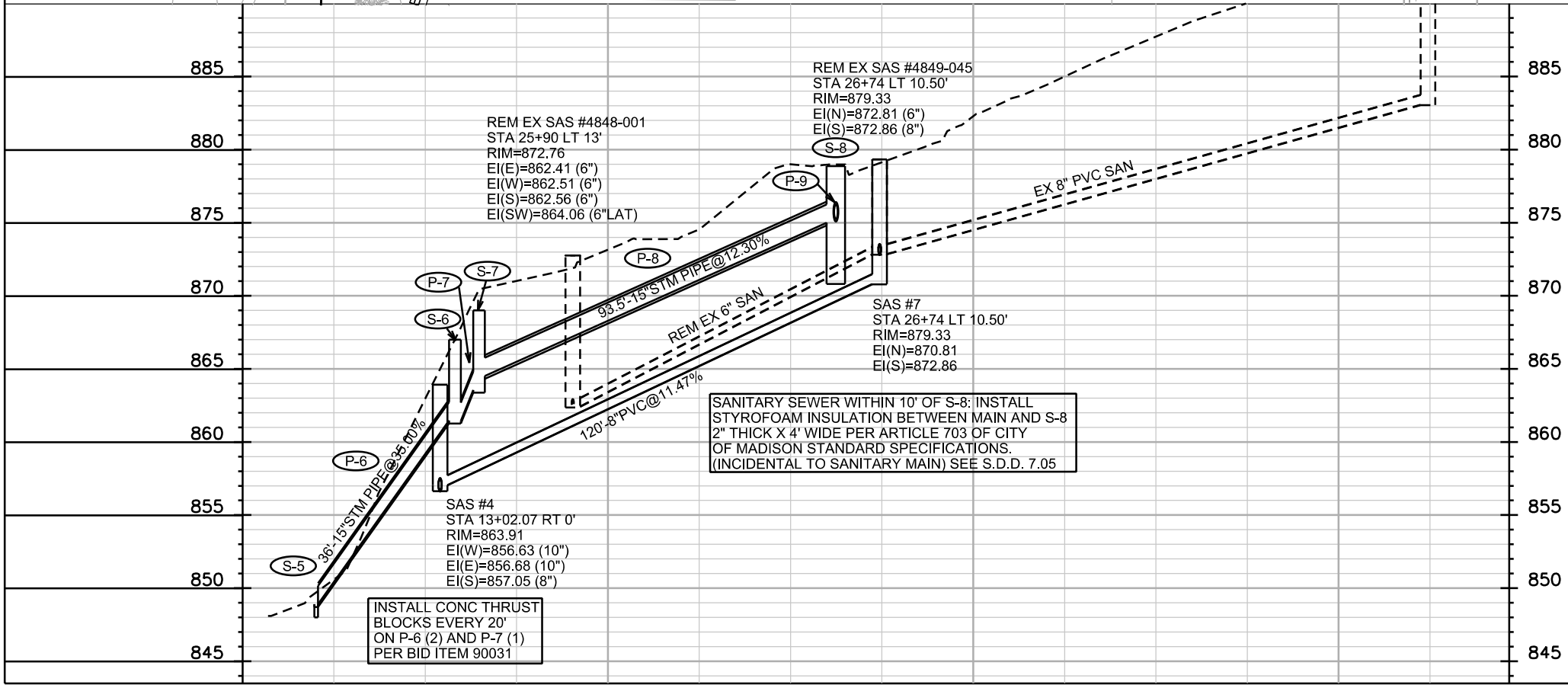
ORIGINATOR: CITY OF MADISON, STREETS DIVISION



225 E LAKEAWN PL:
RESTORE BUILDING ACCESS
WALK WITH PRIVATE GRAVEL PATH
IN ORIGINAL LOCATION PER
BID ITEM 90070.

SEE PAGE T-1 TO T-2 FOR ALL TREE
REMOVAL AND PROTECTION DETAILS

SEE PAGE E-1 TO E-4 FOR TEMPORARY
AND PERMANENT EASEMENT DETAILS



SANITARY SEWER WITHIN 10' OF S-8: INSTALL
STYROFOAM INSULATION BETWEEN MAIN AND S-8
2" THICK X 4' WIDE PER ARTICLE 703 OF CITY
OF MADISON STANDARD SPECIFICATIONS.
(INCIDENTAL TO SANITARY MAIN) SEE S.D.D. 7.05

INSTALL CONC THRUST
BLOCKS EVERY 20'
ON P-6 (2) AND P-7 (1)
PER BID ITEM 90031

PLOT SCALE: _____

PLOT NAME: _____

REV. DATE: _____

ORIGINATOR: CITY OF MADISON, STREETS DIVISION

STORM SEWER SCHEDULE

W GILMAN/ N CARROLL RECONSTRUCTION PROJECT NO. 53W0684	SHEET NO. U-4
STORM SEWER SCHEDULE	
CITY OF MADISON	

STRUCTURES

STRUC. NO.	STATION	LOCATION (OFFSET)	TYPE	TOP OF CASTING	E.I.	DEPTH	NOTES
W LAKELAWN AVE							
S-0	0+11.00	LT-14.50	15" RCP AE	---	848.90	---	W/GATE; (1); W/CONC COLLAR
S-1	0+62.00	LT-16.60	3X3 SAS	865.25	858.00	7.25	W/1550-0054 CASTING
S-2	1+58.80	LT-13.80	H INLET	877.25	870.76	6.49	W/1878-B7L
E LAKELAWN AVE							
S-5	25+19.50	LT-7.50	15" RCP AE	---	848.90	---	W/GATE; (1); W/CONC COLLAR
S-6	25+58.20	LT-4.20	3X3 SAS	867.00	861.50	5.50	W/1550-0054 CASTING
S-7	25+64.65	LT-17.63	3X3 SAS	869.00	863.50	5.50	W/1550-0054 CASTING
S-8	26+62.33	LT-15.04	5' DIA SAS	878.88	875.00	3.88	W/3067-7004; (2); (3)
S-8A	26+61.79	LT-10.64	H INLET	878.88	875.68	3.20	W/3067-7004

PIPES

PIPE NO.	FROM (DNSTM)	TO (UPSTM)	LGTH (FT)	DISCH. E.I.	INLET E.I.	SLOPE (%)	PIPE SIZE	TYPE	NOTES
P-1	S-0	S-1	48	848.90	858.00	18.96%	15"	STM PIPE	
P-2	S-1	S-2	94.5	858.00	870.76	13.50%	15"	STM PIPE	
P-6	S-5	S-6	36	848.90	861.50	35.00%	15"	STM PIPE	
P-7	S-6	S-7	11.5	861.50	863.50	17.39%	15"	STM PIPE	
P-8	S-7	S-8	93.5	863.50	875.00	12.30%	15"	STM PIPE	
P-8A	S-8	S-8A	1.5	875.60	875.68	5.33%	12"	STM PIPE	NCM

STORM STRUCTURE REMOVALS

STRUCT. NO.	ID #	STATION	LOCATION (OFFSET)	TYPE	NOTES:
RS-1	IN 4849-041	26+62.00	LT-15.00	EX SAS	REMOVE; SALVAGE CASTING

STORM PIPE REMOVALS

PIPE REMOVAL NO.	REMOVE FROM	REMOVE TO	REMOVAL LENGTH	PAID (Y/N)	PIPE DIA	NOTES
RP-1	S-0	S-2	147	N	12"	REMOVE
RP-2	25+25.00	S-8	113	N	12"	REMOVE PIPE S-7 TO S-8. ABN REMAINING PIPE WITH PLUGS.

ULO'S

NO.	STATION	LOCATION (OFFSET)	TYPE	TOP UTIL ELEV	BOT UTIL ELEV	NOTES
W LAKELAWN AVE						
ULO-1	2+58.00	LT-13.80	STORM SEWER			LOCATE EX STM PLUG
E LAKELAWN AVE						
ULO-2	26+62.00	LT-15.00	ELEC			

SPECIFIC NOTES

- (1) CONCRETE COLLAR REQUIRED IF NON CONCRETE PIPE IS USED
- (2) WITH SNOOT STORMWATER TREATMENT DEVICE. 4' SUMP BELOW LISTED INVERT
- (3) WITH MODEL 18R SNOOT BMP

STANDARD NOTES:

- ABBREVIATIONS: AE = APRON ENDWALL; RCP = REINFORCED CONCRETE PIPE; HERCP = HORIZONTAL ELLIPTICAL REINFORCED CONCRETE PIPE; DNA = DOES NOT APPLY; SAS = SEWER ACCESS STRUCTURE; LP = LOW POINT INLET STRUCTURE; FP = FIELD Poured STRUCTURE; TR = TOP OF CONCRETE ROOF; NCM = NO CROWN MATCH FOR PIPES
- APPROXIMATE DISCHARGE E.I. GIVEN, ADJUST E.I. AND PIPE SLOPE IN THE FIELD.
- TOP OF CASTING GRADE GIVEN IS THE TOP OF CURB FOR INLET STRUCTURES AND THE FLOWLINE OF THE CLOSED CASTING FOR SAS's.
- TOP OF CONCRETE ROOF (TR) IS 1.25' BELOW TOP OF CASTING UNLESS OTHERWISE NOTED.
- ALL REINFORCED CONCRETE PIPES TO BE CLASS III UNLESS OTHERWISE NOTED.
- SURVEYOR TO CONFIRM THAT ALL INLET STATION / OFFSETS LINE UP WITH PROPOSED CURB AND GUTTER.
- ALL STRUCTURES CALLED OUT AS FIELD Poured SHALL BE FIELD Poured. ALL OTHER STRUCTURES (NOT INDICATED AS FIELD Poured) SHALL BE SUBMITTED TO CITY ENGINEERING FOR APPROVAL IF PRECAST STRUCTURES ARE PREFERRED. CONTACT COREY STELLJES OF CITY ENGINEERING AT (608) 266-9721 FOR PRECAST APPROVALS, OR FAX SHOP DRAWINGS TO (608)264-9275.

SANITARY SEWER SCHEDULE

PROPOSED SANITARY STRUCTURES

SAS NO.	STATION	LOCATION (OFFSET)	TOP OF CASTING	E.I.	DEPTH	NOTES
---------	---------	-------------------	----------------	------	-------	-------

LAKESIDE MAIN

SAS #1	10'+71.90	RT-0	864.12	855.56	8.56	
SAS #2	11'+57.87	RT-0	863.24	855.95	7.29	
SAS #3	12'+07.16	RT-0	859.96	856.20	3.76	
SAS #4	13'+02.07	RT-0	863.91	856.63	7.28	
SAS #5	13'+71.51	RT-0	868.88	856.96	11.92	
SAS #6	14'+01.94	RT-0	871.38	862.78	8.60	

E LAKELAWN CT

SAS #7	26'+74.00	LT-10.50	879.33	870.81	8.52	
--------	-----------	----------	--------	--------	------	--

SANITARY STRUCTURE REMOVALS

SAS NO.	STATION	LOCATION (OFFSET)	EX TOP CASTING	EX EI	DEPTH	NOTES
---------	---------	-------------------	----------------	-------	-------	-------

LAKESIDE MAIN

4848-002	14'+01.94	RT-0	871.33	864.61	6.72	REMOVE
4849-039	11'+59.38	RT-23.30	868.95	858.46	10.49	REMOVE

E LAKELAWN CT

4848-001	25'+90.00	LT-13.00	872.76	862.41	10.35	REMOVE
4849-045	26'+74.00	LT-10.50	879.33	872.81	6.52	REMOVE

PROPOSED SANITARY PIPES

FROM SAS (DNSTM)	TO SAS (UPSTM)	LGTH (FT)	DISCH. E.I.	INLET E.I.	SLOPE (%)	SIZE (DIA)	TYPE	NOTES
------------------	----------------	-----------	-------------	------------	-----------	------------	------	-------

EX PLUG	SAS #1	22	855.47	855.56	0.40%	10"	PVC AWWA C900	
SAS #1	SAS #2	86	855.61	855.95	0.40%	10"	PVC AWWA C900	
SAS #2	SAS #3	50	856.00	856.20	0.40%	10"	PVC AWWA C900	
SAS #3	SAS #4	95	856.25	856.63	0.40%	10"	PVC AWWA C900	
SAS #4	SAS #5	69	856.68	856.96	0.41%	10"	PVC AWWA C900	
SAS #5	SAS #6	30	858.96	862.78	12.73%	10"	PVC AWWA C900	
SAS #2	4849-062	90	856.12	864.18	8.96%	8"	PVC SDR 35	
SAS #4	SAS#7	120	857.05	870.81	11.47%	8"	PVC SDR 35	

SANITARY PIPE REMOVALS AND ABANDONMENTS

REMOVE FROM	REMOVE TO	LENGTH (FT)	PAID (Y/N)	SIZE (DIA)	NOTES
-------------	-----------	-------------	------------	------------	-------

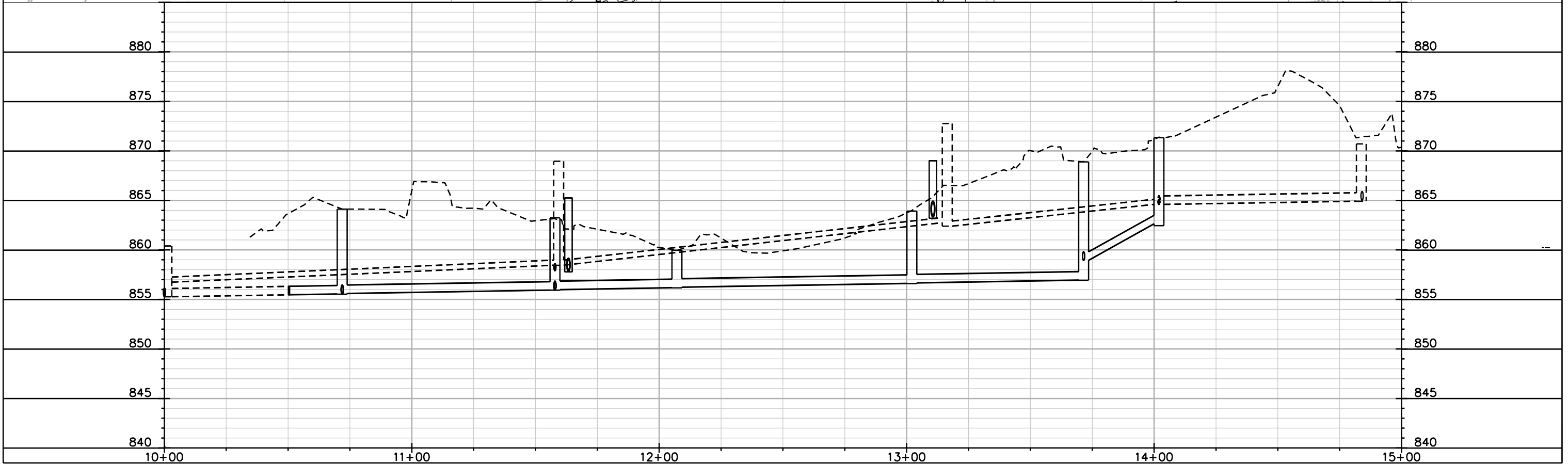
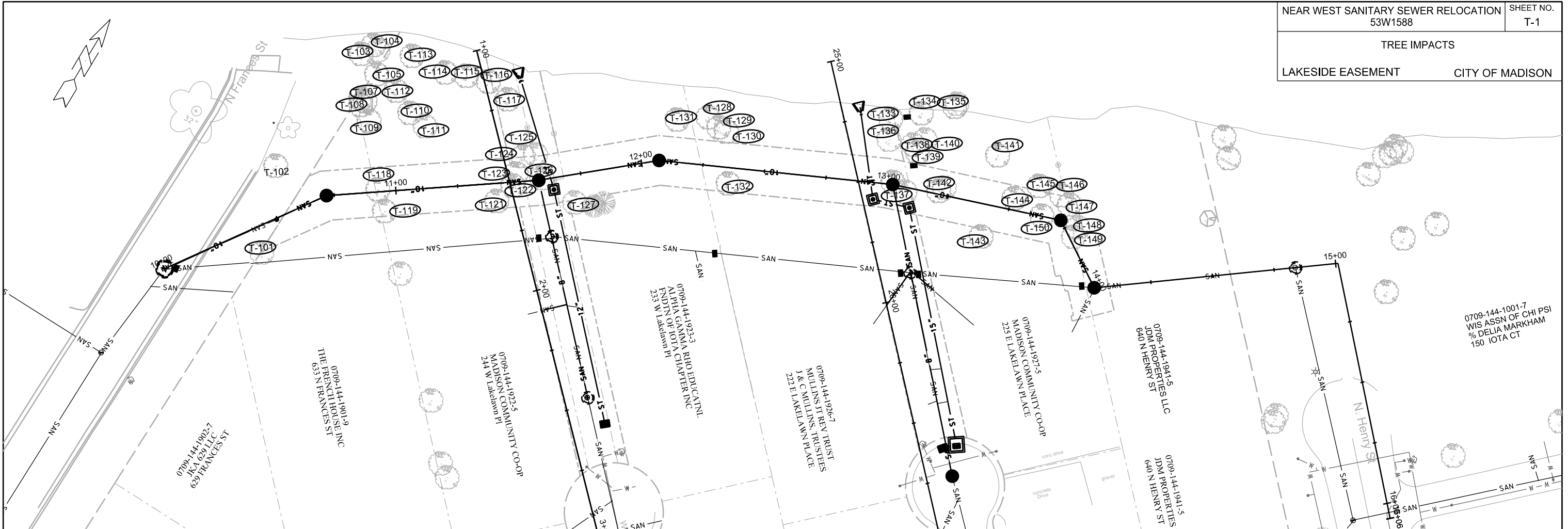
4849-062	4849-039	66	N	6"	ABANDON WITH PLUGS
4849-058	4849-062	151	Y (1)	6"	ABANDON WITH PLUGS
4849-039	4848-001	145	N	6"	ABANDON WITH PLUGS
4848-001	4848-002	77	N	6"	ABANDON WITH PLUGS

PLOT SCALE: ---

PLOT NAME: ---

REV. DATE: ---

ORIGINATOR: CITY OF MADISON STREETS DIVISION



PLOT SCALE: _____

PLOT NAME: _____

REV. DATE: _____

ORIGINATOR: CITY OF MADISON, STREETS DIVISION

TREE REMOVAL SCHEDULE

NEAR WEST SANITARY RELOCATION
PROJECT NO. 53W1588

SHEET NO.
T-2

TREE SCHEDULE

CITY OF MADISON

TREE REMOVALS AND IMPACTS

TREE NO.	DIA (INCHES) (MULTIPLE)	CONDITION (%)	SPECIES	ACTION	NOTES
T-101	9.5	81	Red Maple	PROTECT	
T-102	26.0	78	Box Elder	PROTECT	
T-103	5, 24	68	Willow	PROTECT	
T-104	17, 10	62	Willow	PROTECT	
T-105	8, 6	62	Ash	PROTECT	
T-106	8.0	59	Red Maple	PROTECT	
T-107	5.0	75	Box Elder	PROTECT	
T-108	8.0	75	Box Elder	PROTECT	
T-109	13.0	59	Box Elder	PROTECT	
T-110	5.0	68	Crabapple	PROTECT	
T-111	8.0	68	Crabapple	PROTECT	
T-112	3.5	82	Ash	PROTECT	
T-113	24, 13	43	Willow	PROTECT	
T-114	4.0	80	Ash	PROTECT	
T-115	38.0	43	Willow	PROTECT	
T-116	6.0	75	Box Elder	PROTECT	
T-117	6, 3	71	Box Elder	PROTECT	
T-118	13.0	71	Box Elder	REMOVE	
T-119	4.5	78	Box Elder	PROTECT	
T-120	14.0	66	Mulberry	PROTECT	
T-121	10.0	66	Mulberry	PROTECT	
T-122	19.0	96	Hackberry	REMOVE	
T-123	3.5	82	Hackberry	REMOVE	
T-124	3.5	88	Maple	PROTECT	
T-125	2,2,2	82	Serviceberry	PROTECT	
T-126	3.5	79	Serviceberry	REMOVE	
T-127	3.0	95	Paper Birch	PROTECT	
T-128	10.0	53	White Ash	PROTECT	
T-129	5,23.5	53	Willow	PROTECT	
T-130	37.5	59	Willow	PROTECT	
T-131	2.0	95	River Birch	PROTECT	
T-132	25.0	50	Box Elder	PROTECT	
T-133	28.5, 20,12,5	69	Willow	PROTECT	
T-134	23.0	66	Willow	PROTECT	
T-135	20,24	63	Willow	PROTECT	
T-136	4.5	63	Willow	PROTECT	
T-137	14,14	68	Box Elder	REMOVE	
T-138	5.5	66	Box Elder	PROTECT	
T-139	5.5	71	Willow	PROTECT	
T-140	5.5	66	Box Elder	PROTECT	
T-141	8.0	53	Box Elder	PROTECT	
T-142	14.0	84	Ash	REMOVE	
T-143	15.0	53	Apple	PROTECT	
T-144	19.0	71	Mulberry	REMOVE	
T-145	7.5	75	Box Elder	PROTECT	
T-146	22.0	71	Box Elder	PROTECT	
T-147	10.0	71	Box Elder	PROTECT	
T-148	8.0	71	Box Elder	REMOVE	
T-149	10.0	48	Box Elder	REMOVE	
T-150	4.0	72	Box Elder	REMOVE	

PLOT SCALE: ---

PLOT NAME: ---

REV. DATE: ---

ORIGINATOR: CITY OF MADISON STREETS DIVISION