

Madison, Wisconsin

INDEX OF SHEETS

SHEET NO.	TITLE
SHEET NO. 1	
SHEET NO. W1-W3	WATER PLAN & PROFILE
SHEET NO. W4	WATER ESTIMATE OF MATERIALS

CITY OF MADISON

CITY ENGINEERING DIVISION

DEPARTMENT OF PUBLIC WORKS

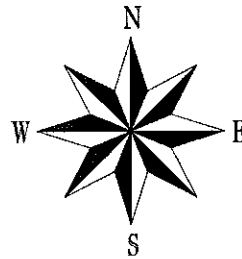
PLAN OF PROPOSED IMPROVEMENT

HIGHLAND MANOR STORM SHELTER

WATER MAIN COMPONENT

CITY PROJECT NO. 53W1625

CONTRACT NO. 7307

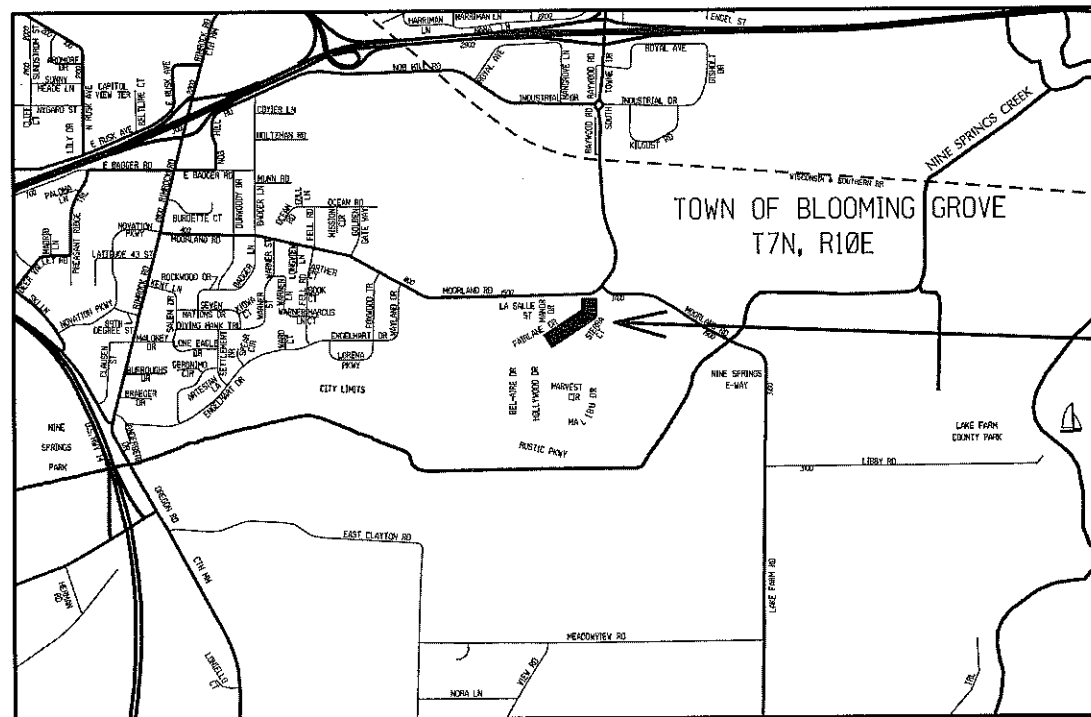


CONVENTIONAL SIGNS	
FIELD VERIFY ALL UTILITY LOCATIONS	
GAS	— G —
STORM SEWER	— ST —
SANITARY SEWER	— SAN —
WATER	— W —
OVERHEAD ELECTRIC	— OH —
POWER POLE	□
ADA COMPLIANT RAMP W/ DETECTABLE WARNING FIELD	▤
COMBUSTIBLE FLUIDS	

NOTES:

ALL GUTTERS SHALL DRAIN WITH A MINIMUM GRADE OF 0.50% TOWARD STORM SEWER INLETS.

SIDEWALK RAMPS AND CURB THRU SIDEWALK RAMPS SHALL HAVE A MAXIMUM SLOPE OF 1" PER 12". SIDEWALK AND CURB RAMPS SHALL BE CONSTRUCTED WITH A SIDE SLOPE OF 2.00%. SIDEWALK SHALL HAVE A MINIMUM LONGITUDINAL SLOPE OF 0.50% AND A MAXIMUM LONGITUDINAL SLOPE OF 5.00% EXCEPT WHERE STREET GRADES EXCEED 5.00%.



CONSTRUCTION PROJECT LOCATION

PUBLIC IMPROVEMENT PROJECT APPROVED

January 21, 2014

BY THE COMMON COUNCIL OF MADISON, WISCONSIN

PUBLIC IMPROVEMENT DESIGN APPROVED BY:

City Engineer 4/10/14
Date

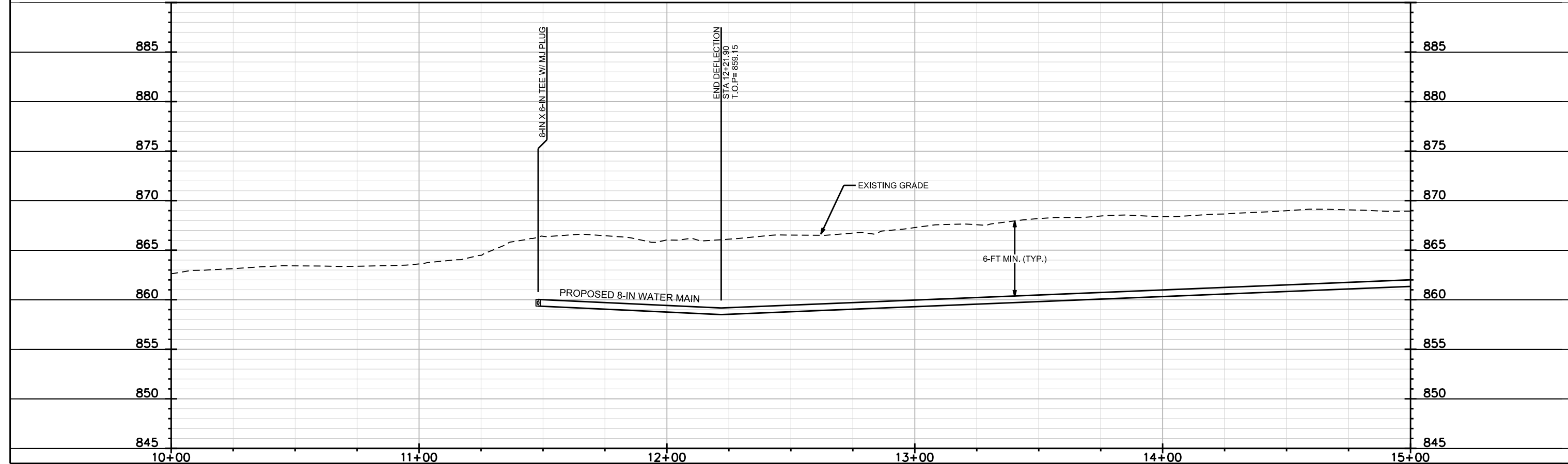
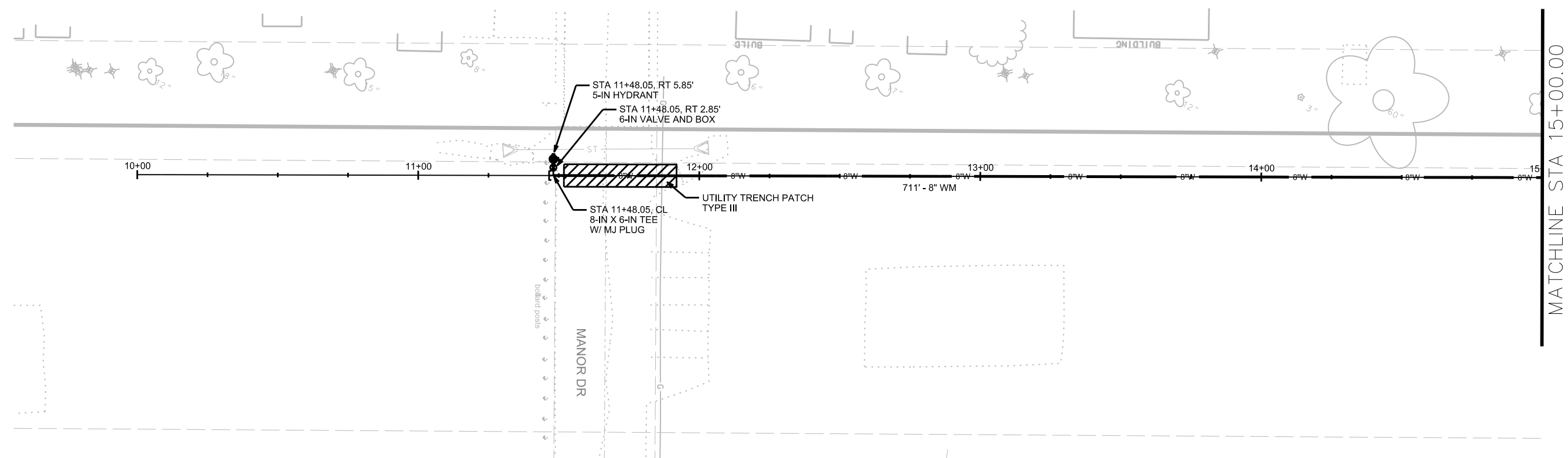


PLOT SCALE:

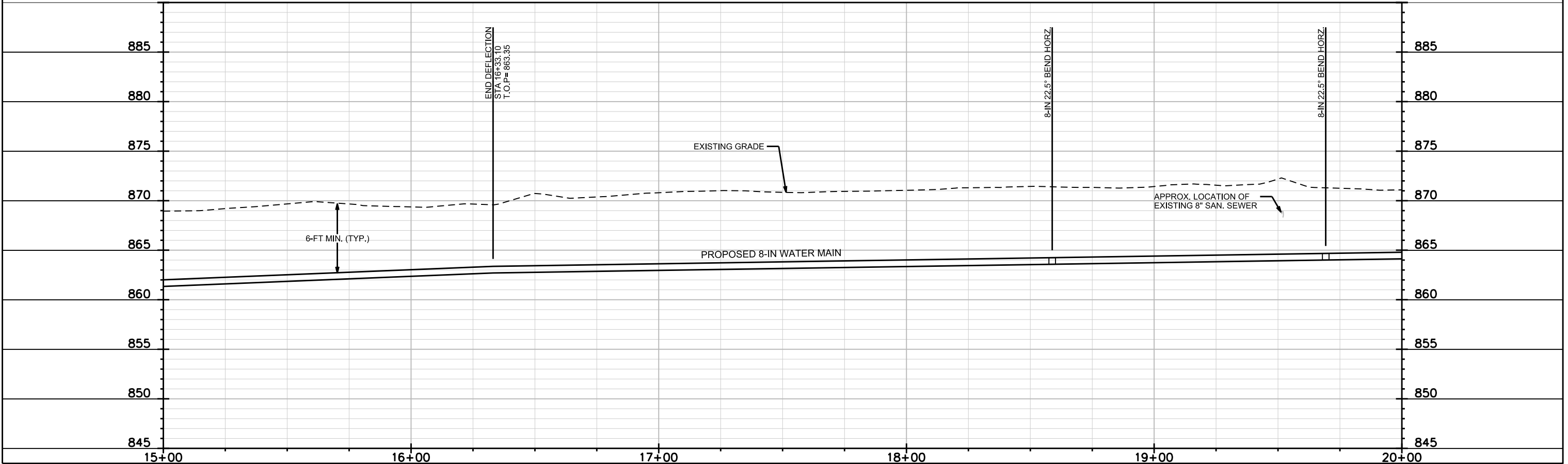
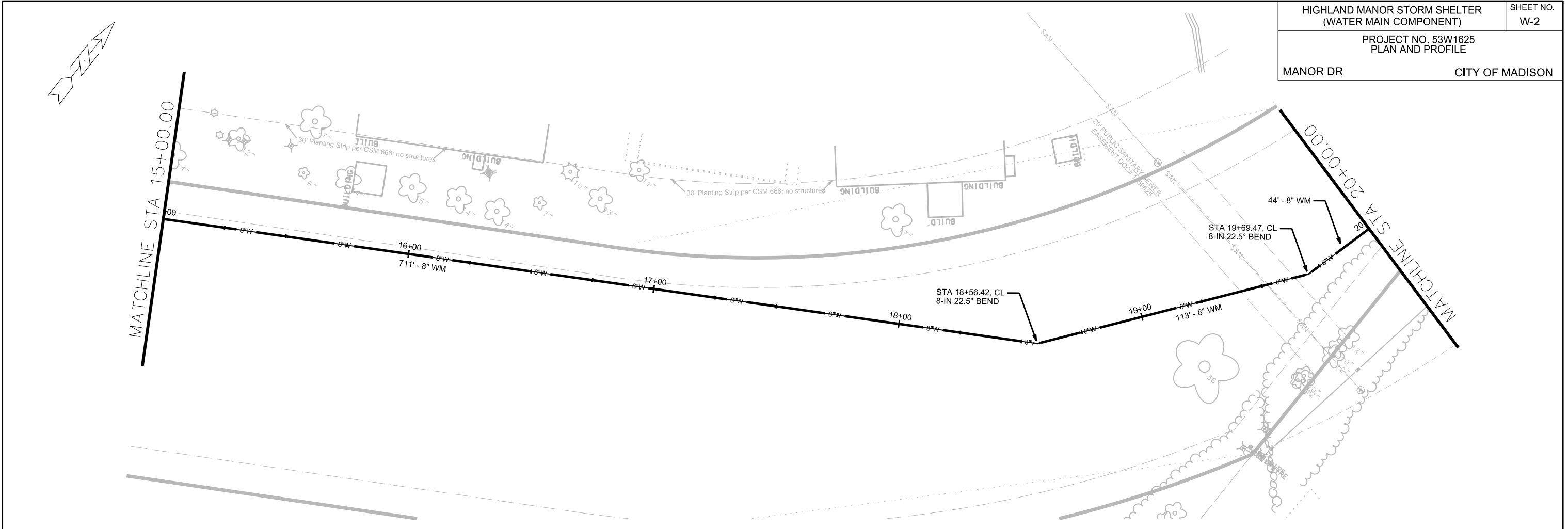
PLOT NAME:

REV. DATE:

ORIGINATOR: CITY OF MADISON, STREETS DIVISION



PLOT SCALE:
 PLOT NAME:
 REV. DATE:
 ORIGINATOR: CITY OF MADISON, STREETS DIVISION



PLOT SCALE: _____
 PLOT NAME: _____
 REV. DATE: _____
 ORIGINATOR: CITY OF MADISON, STREETS DIVISION

CONSTRUCTION NOTES:

1. CONSTRUCT NEW WATER MAIN 6.0' BELOW FINISHED GRADE, UNLESS OTHERWISE NOTED. INSULATE MAIN WITH POLYSTYRENE BOARD AT UTILITY CROSSINGS OR OTHER AREAS IDENTIFIED BY ENGINEER AS HAVING INADEQUATE COVER.
2. VERIFY SIZE OF EXISTING WATER SERVICES AND RECONNECT SERVICES AS INDICATED.
3. MINIMIZE DISRUPTION OF SERVICE TO EXISTING CUSTOMERS. NOTIFY PER CONTRACT REQUIREMENTS OF ANY PLANNED WATER OUTAGE.
4. THE EXISTING UTILITIES SHOWN ON THIS PLAN REPRESENT THE BEST INFORMATION AVAILABLE TO THE WATER UTILITY AT THE TIME OF PLAN PREPARATION. CONTRACTOR IS RESPONSIBLE FOR HAVING EACH UTILITY LOCATED PRIOR TO COMMENCING WORK.

WN1 - LIVE TAPPING SLEEVE AND VALVE TO BE PROVIDED AND PERFORMED BY THE CITY OF MADISON WATER UTILITY. EXCAVATION AND RESTORATION TO BE PERFORMED BY CONTRACTOR

ESTIMATE OF MATERIALS SUPPLIED BY CONTRACTOR:

* ESTIMATE OF MATERIALS IS FOR INFORMATION ONLY. ENGINEER DOES NOT GUARANTEE ACCURACY OF MATERIAL TAKE-OFF.

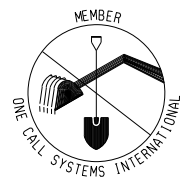
5' - 6-IN PIPE	2 - 8-IN 45° BEND
975' - 8-IN PIPE	2 - 8-IN 22.5° BEND
1 - 6-IN VALVE & BOX	1 - 8-IN 11.25° BEND
1 - 8-IN X 6-IN TEE	1 - 8-IN MJ PLUG
	1 - 5-IN HYDRANT ASSEMBLY (TEMPORARY FLUSHING)

MATERIALS SUPPLIED BY CITY:

1 - 12-IN X 8-IN TAPPING SLEEVE & VALVE

REUSED MATERIALS:

NONE



TO OBTAIN LOCATION OF PARTICIPANTS' UNDERGROUND FACILITIES BEFORE YOU DIG IN WISCONSIN

CALL DIGGERS HOTLINE
811

or 1-800-242-8511

TOLL FREE

FAX-A-LOCATE 1-800-338-3860

TDD (FOR HEARING IMPAIRED) 1-800-542-2289

WIS. STATUTE 182.0175 (1974)
REQUIRES MIN. OF 3 WORK DAY
NOTICE BEFORE YOU EXCAVATE

