

Madison, Wisconsin

INDEX OF SHEETS

SHEET NO.	1	TITLE
SHEET NO.	D1	TYPICAL SECTIONS & DETAILS
SHEET NO.	EC1-EC2	EROSION CONTROL PLAN
SHEET NO.	P1-P2	STREETS PLAN & PROFILE
SHEET NO.	U1-U2	UTILITIES PLAN & PROFILE
SHEET NO.	U3	SANITARY SEWER SCHEDULE
SHEET NO.	U4	STORM SEWER SCHEDULE
SHEET NO.	W1-W2	WATER MAIN PLAN & PROFILE
SHEET NO.	W3	WATER ESTIMATE OF MATERIALS
SHEET NO.	W4	WATER IMPACT PLAN
SHEET NO.	X1-X6	STREET CROSS SECTIONS

CITY OF MADISON

CITY ENGINEERING DIVISION

DEPARTMENT OF PUBLIC WORKS

PLAN OF PROPOSED IMPROVEMENT

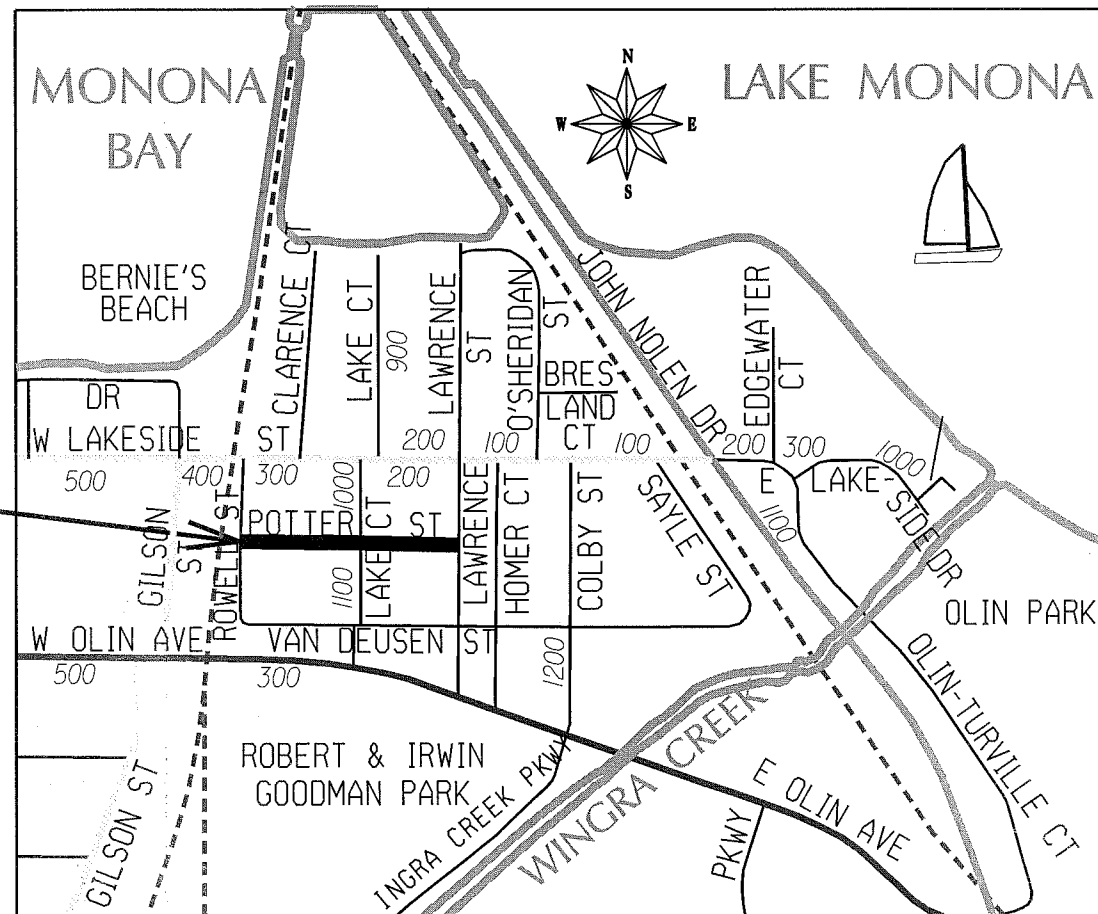
POTTER STREET RECONSTRUCTION

ASSESSMENT DISTRICT - 2015

CITY PROJECT NO. 53W1506
 CONTRACT NO. 7439
 MUNIS NO. 10213

CONVENTIONAL SIGNS	
FIELD VERIFY ALL UTILITY LOCATIONS	
GAS	— G —
STORM SEWER	— ST —
SANITARY SEWER	— SAN —
WATER	— W —
BURIED ELECTRIC	— E —
OVERHEAD ELECTRIC	— OH —
POWER POLE	
ADA COMPLIANT RAMP W/ DETECTABLE WARNING FIELD	
COMBUSTIBLE FLUIDS	

CONSTRUCTION PROJECT LOCATION



NOTES:

ALL GUTTERS SHALL DRAIN WITH A MINIMUM GRADE OF 0.50% TOWARD STORM SEWER INLETS.

SIDEWALK RAMPS AND CURB THRU SIDEWALK RAMPS SHALL HAVE A MAXIMUM SLOPE OF 1" PER 12". SIDEWALK AND CURB RAMPS SHALL BE CONSTRUCTED WITH A SIDE SLOPE OF 1.5%. SIDEWALK SHALL HAVE A MINIMUM LONGITUDINAL SLOPE OF 0.50% AND A MAXIMUM LONGITUDINAL SLOPE OF 5.00% EXCEPT WHERE STREET GRADES EXCEED 5.00%.

EARTH WORK SUMMARY:

EXCAVATION CUT (MEASURED PLAN QUANTITY)	1,005 C.Y.
ESTIMATED UNDISTRIBUTED UNDERCUT	300 C.Y.
TOTAL UNCLASSIFIED EXCAVATION CUT	1,305 C.Y.

PUBLIC IMPROVEMENT PROJECT APPROVED

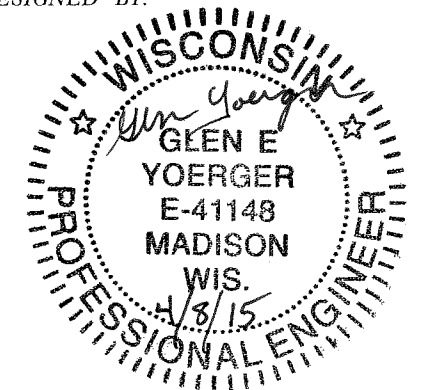
MARCH 17, 2015

BY THE COMMON COUNCIL OF MADISON, WISCONSIN

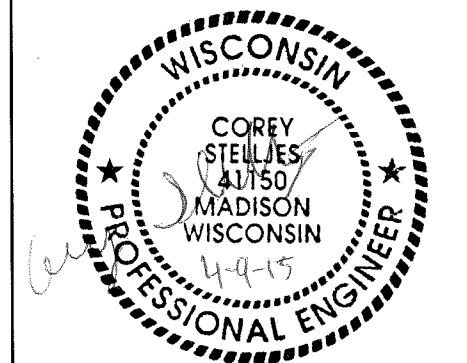
PUBLIC IMPROVEMENT DESIGN APPROVED BY:

[Signature] 4/9/15
 City Engineer Date

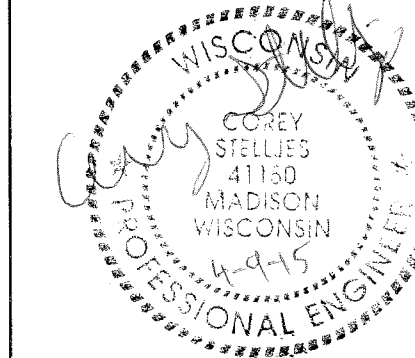
STREET DESIGNED BY:



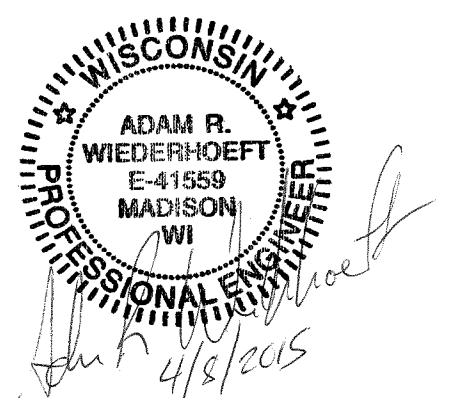
STORM SEWER DESIGNED BY:



SANITARY SEWER DESIGNED BY:



WATER MAIN DESIGNED BY:

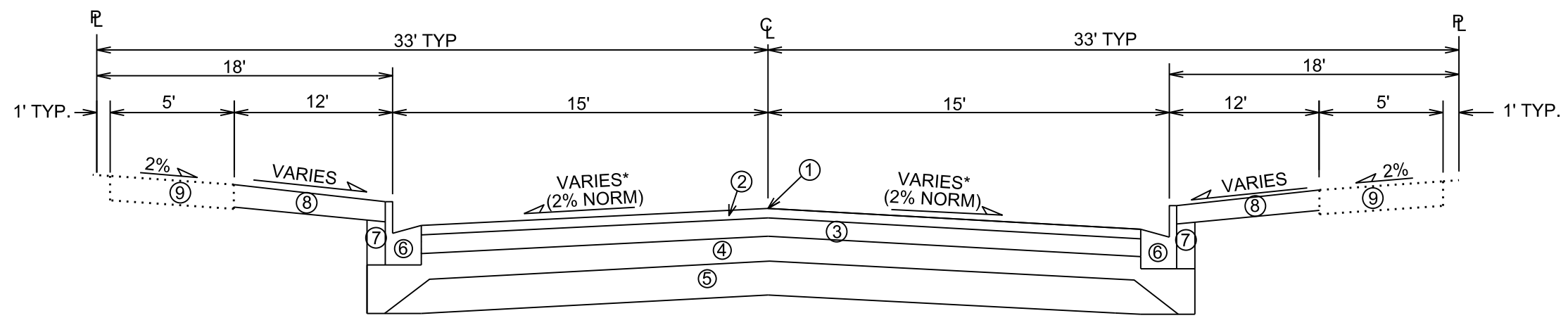


PLOT SCALE:

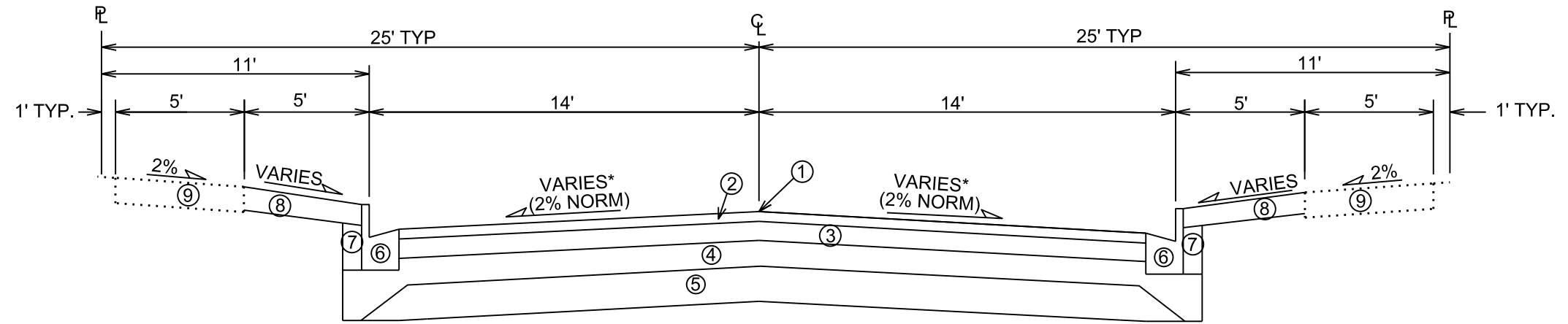
PLOT NAME:

REV. DATE:

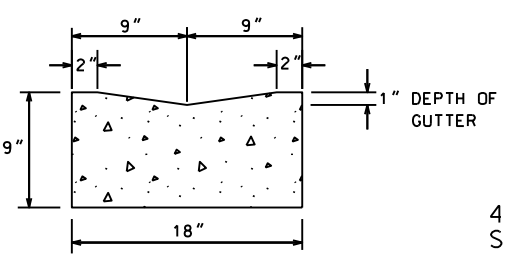
ORIGINATOR: CITY OF MADISON, STREETS DIVISION



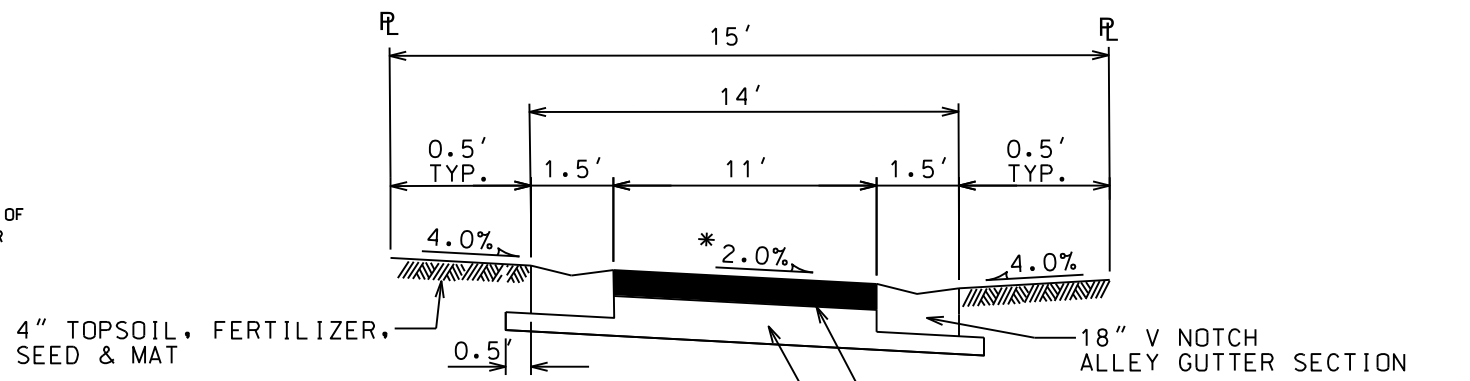
TYPICAL FINISHED SECTION
POTTER STREET
STA 10+50 to STA 14+50



TYPICAL FINISHED SECTION
POTTER STREET
STA 14+75 to STA 18+00



ALLEY GUTTER DETAIL



TYPICAL FINISHED SECTION
LAKE COURT

- ① POINT REFERRED TO ON PROFILE
- ② 1 3/4" BITUMINOUS UPPER LAYER, TYPE E-0.3
- ③ 1 3/4" BITUMINOUS LOWER LAYER, TYPE E-0.3
- ④ 4" GRADATION 2 CRUSHED STONE
- ⑤ 6" GRADATION 1 CRUSHED STONE
- ⑥ TYPE 'A' OR 'X' CONCRETE CURB & GUTTER
- ⑦ FILL, INCIDENTAL
- ⑧ 4" TOPSOIL, SEED & MAT
- ⑨ 5" CONCRETE SIDEWALK, REPLACE AS NOTED IN PLAN

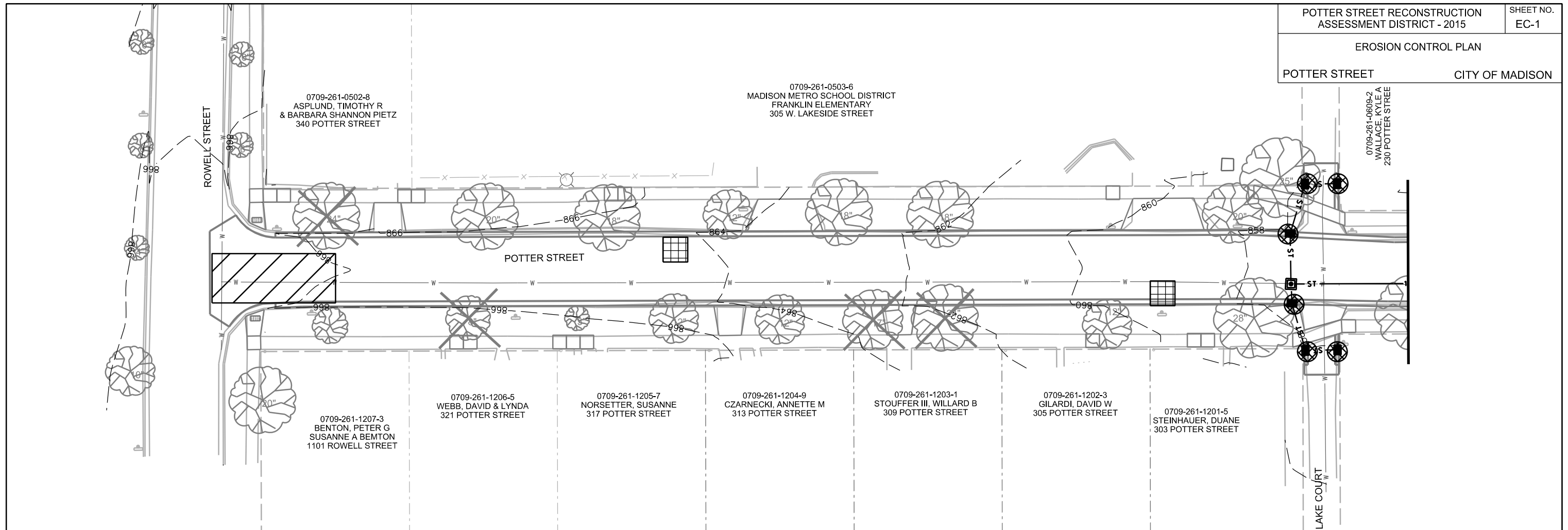
* SEE CROSS SECTION SHEETS FOR CROSS SLOPES AND TOP OF CURB ELEVATIONS.

TYPICAL SECTIONS NOT TO SCALE

PLOT SCALE:
PLOT NAME:
REV. DATE:
ORIGINATOR: CITY OF MADISON, STREETS DIVISION

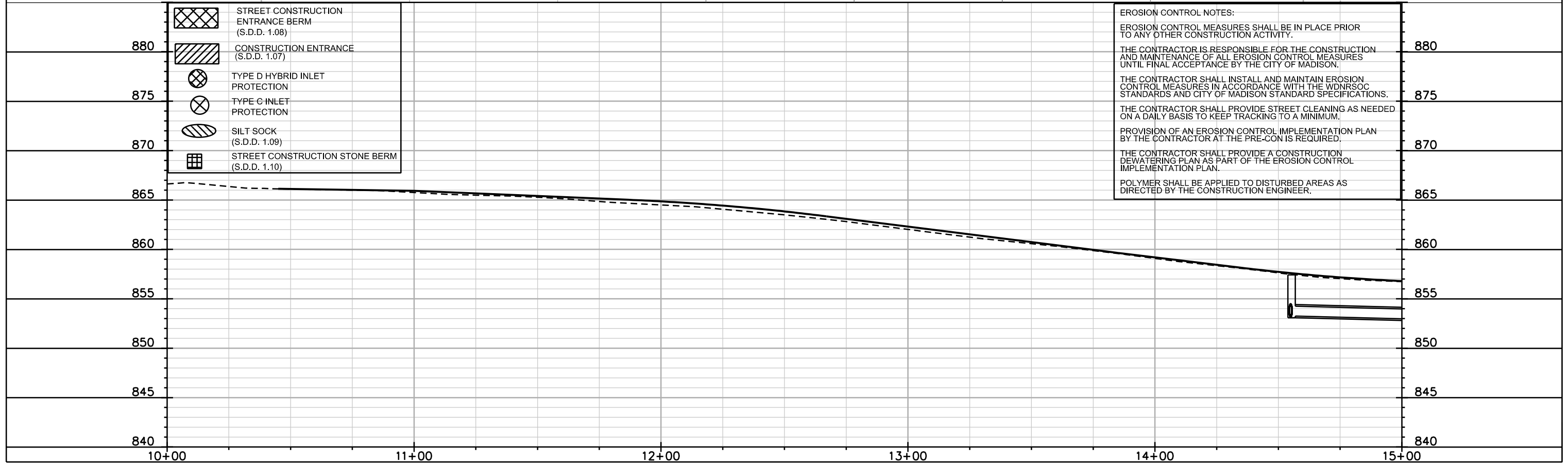
EROSION CONTROL PLAN

POTTER STREET CITY OF MADISON



	STREET CONSTRUCTION ENTRANCE BERM (S.D.D. 1.08)
	CONSTRUCTION ENTRANCE (S.D.D. 1.07)
	TYPE D HYBRID INLET PROTECTION
	TYPE C INLET PROTECTION
	SILT SOCK (S.D.D. 1.09)
	STREET CONSTRUCTION STONE BERM (S.D.D. 1.10)

EROSION CONTROL NOTES:
 EROSION CONTROL MEASURES SHALL BE IN PLACE PRIOR TO ANY OTHER CONSTRUCTION ACTIVITY.
 THE CONTRACTOR IS RESPONSIBLE FOR THE CONSTRUCTION AND MAINTENANCE OF ALL EROSION CONTROL MEASURES UNTIL FINAL ACCEPTANCE BY THE CITY OF MADISON.
 THE CONTRACTOR SHALL INSTALL AND MAINTAIN EROSION CONTROL MEASURES IN ACCORDANCE WITH THE WDNRSOC STANDARDS AND CITY OF MADISON STANDARD SPECIFICATIONS.
 THE CONTRACTOR SHALL PROVIDE STREET CLEANING AS NEEDED ON A DAILY BASIS TO KEEP TRACKING TO A MINIMUM.
 PROVISION OF AN EROSION CONTROL IMPLEMENTATION PLAN BY THE CONTRACTOR AT THE PRE-CON IS REQUIRED.
 THE CONTRACTOR SHALL PROVIDE A CONSTRUCTION DEWATERING PLAN AS PART OF THE EROSION CONTROL IMPLEMENTATION PLAN.
 POLYMER SHALL BE APPLIED TO DISTURBED AREAS AS DIRECTED BY THE CONSTRUCTION ENGINEER.



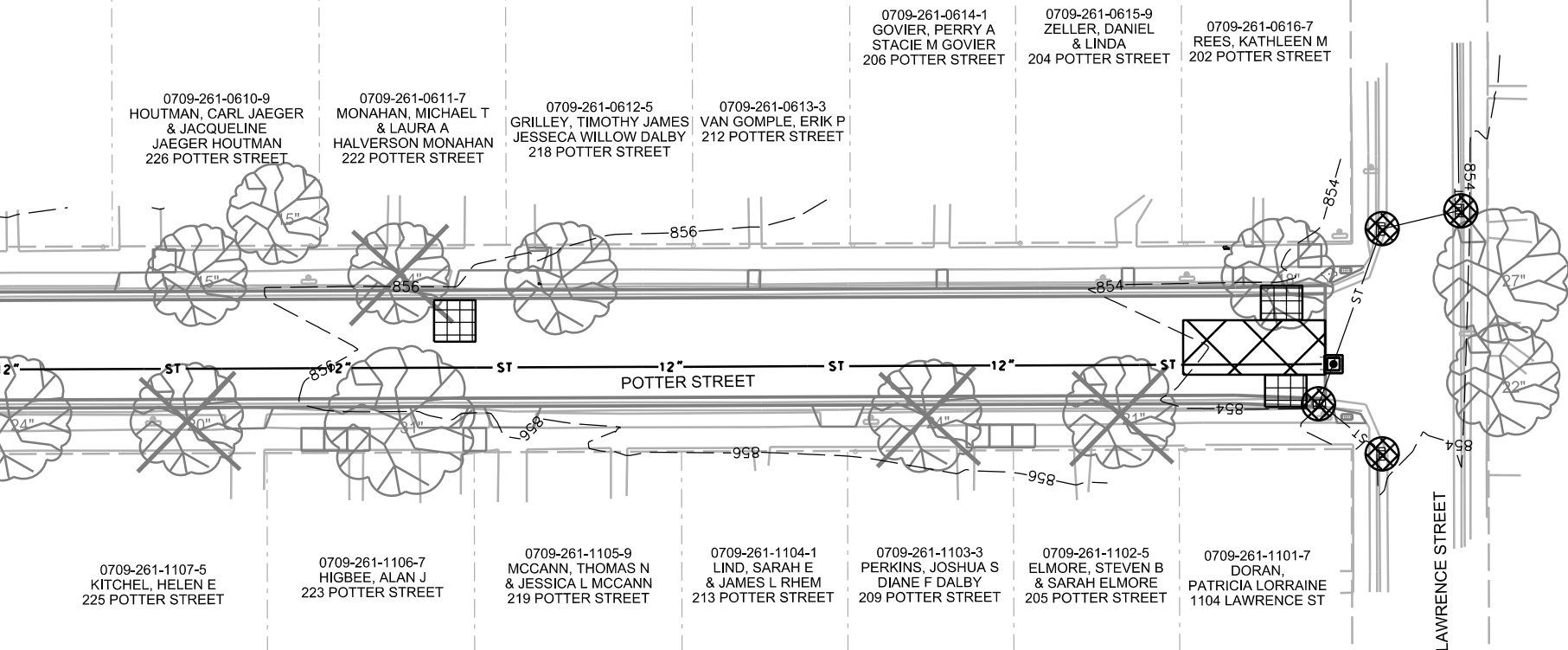
PLOT SCALE: _____

PLOT NAME: _____

REV. DATE: _____

ORIGINATOR: CITY OF MADISON, STREETS DIVISION

MATCHLINE STA 15+00.00



- | | |
|--|---|
| | STREET CONSTRUCTION ENTRANCE BERM (S.D.D. 1.08) |
| | CONSTRUCTION ENTRANCE (S.D.D. 1.07) |
| | TYPE D HYBRID INLET PROTECTION |
| | TYPE C INLET PROTECTION |
| | SILT SOCK (S.D.D. 1.09) |
| | STREET CONSTRUCTION STONE BERM (S.D.D. 1.10) |

PLOT SCALE: _____
PLOT NAME: _____

REV. DATE: _____

ORIGINATOR: CITY OF MADISON, STREETS DIVISION



EROSION CONTROL NOTES:

EROSION CONTROL MEASURES SHALL BE IN PLACE PRIOR TO ANY OTHER CONSTRUCTION ACTIVITY.

THE CONTRACTOR IS RESPONSIBLE FOR THE CONSTRUCTION AND MAINTENANCE OF ALL EROSION CONTROL MEASURES UNTIL FINAL ACCEPTANCE BY THE CITY OF MADISON.

THE CONTRACTOR SHALL INSTALL AND MAINTAIN EROSION CONTROL MEASURES IN ACCORDANCE WITH THE WDNR SOC STANDARDS AND CITY OF MADISON STANDARD SPECIFICATIONS.

THE CONTRACTOR SHALL PROVIDE STREET CLEANING AS NEEDED ON A DAILY BASIS TO KEEP TRACKING TO A MINIMUM.

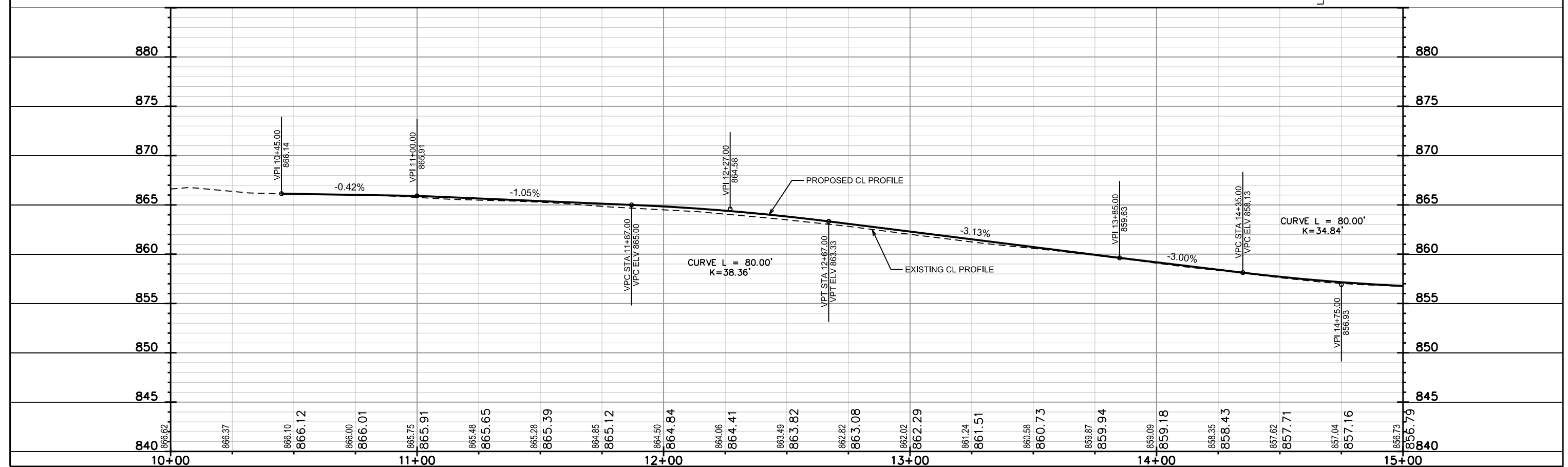
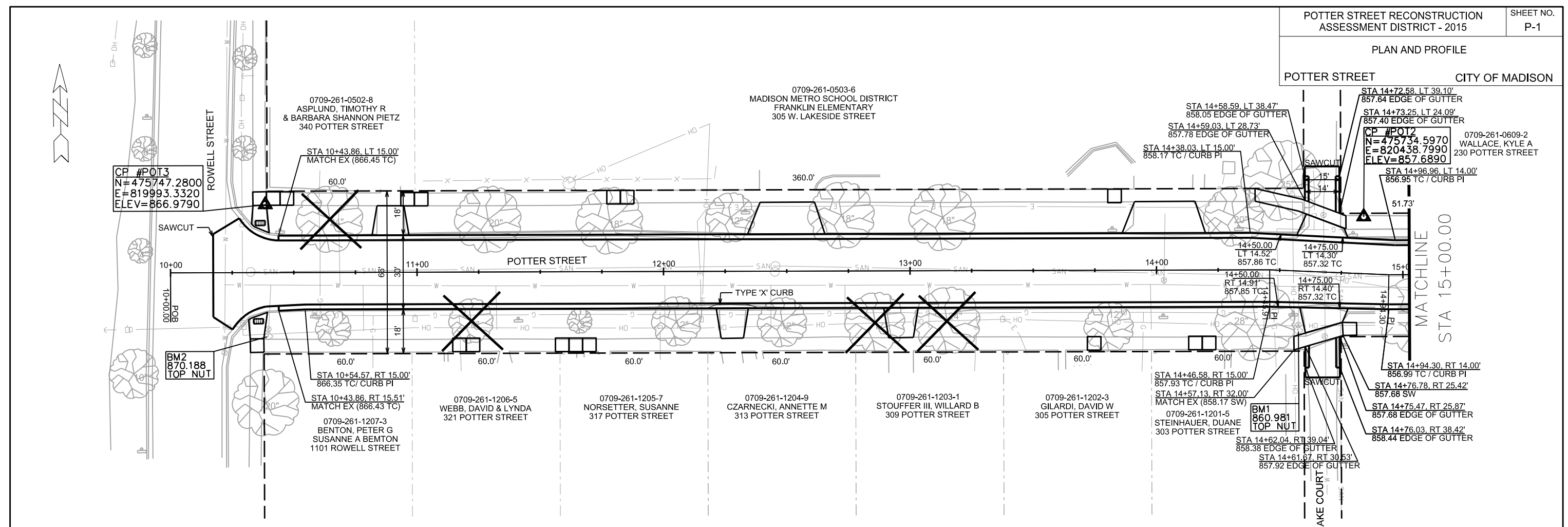
PROVISION OF AN EROSION CONTROL IMPLEMENTATION PLAN BY THE CONTRACTOR AT THE PRE-CON IS REQUIRED.

THE CONTRACTOR SHALL PROVIDE A CONSTRUCTION DEWATERING PLAN AS PART OF THE EROSION CONTROL IMPLEMENTATION PLAN.

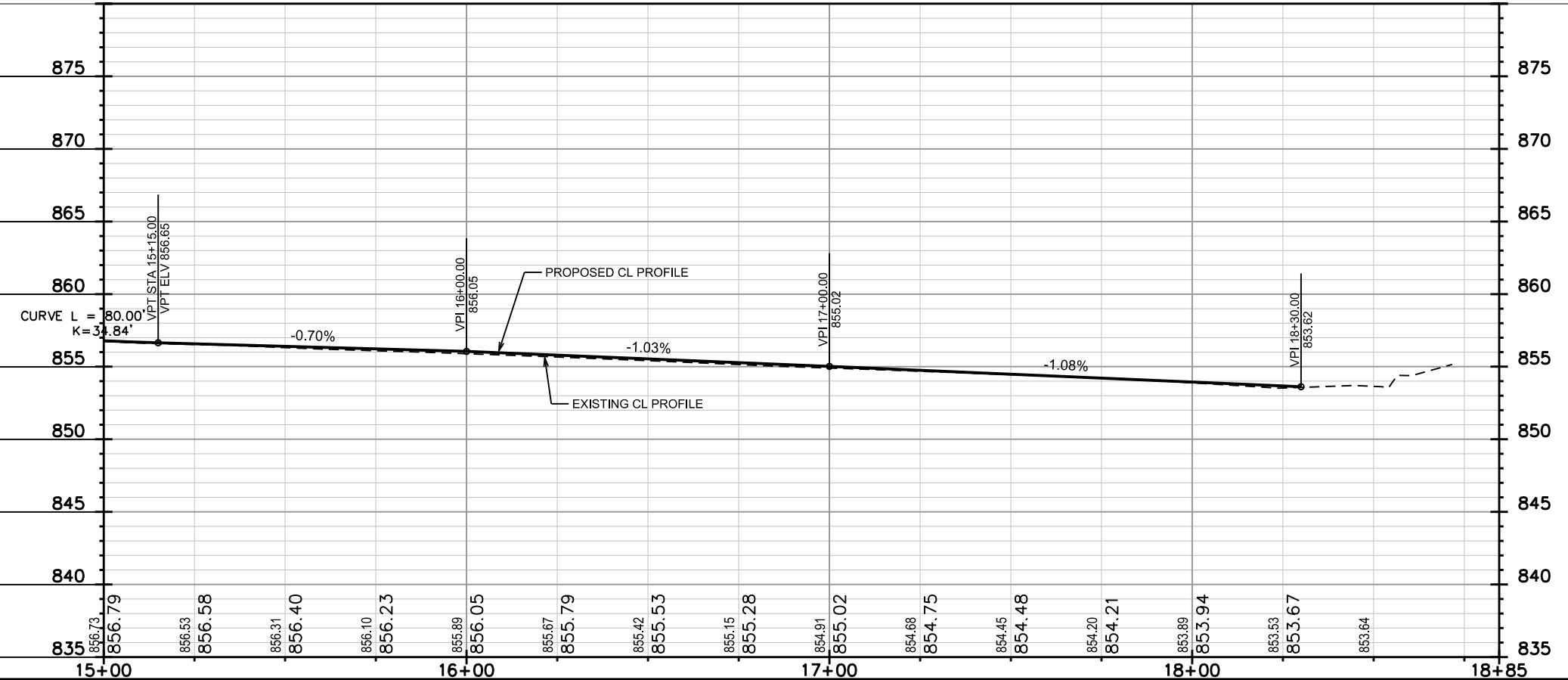
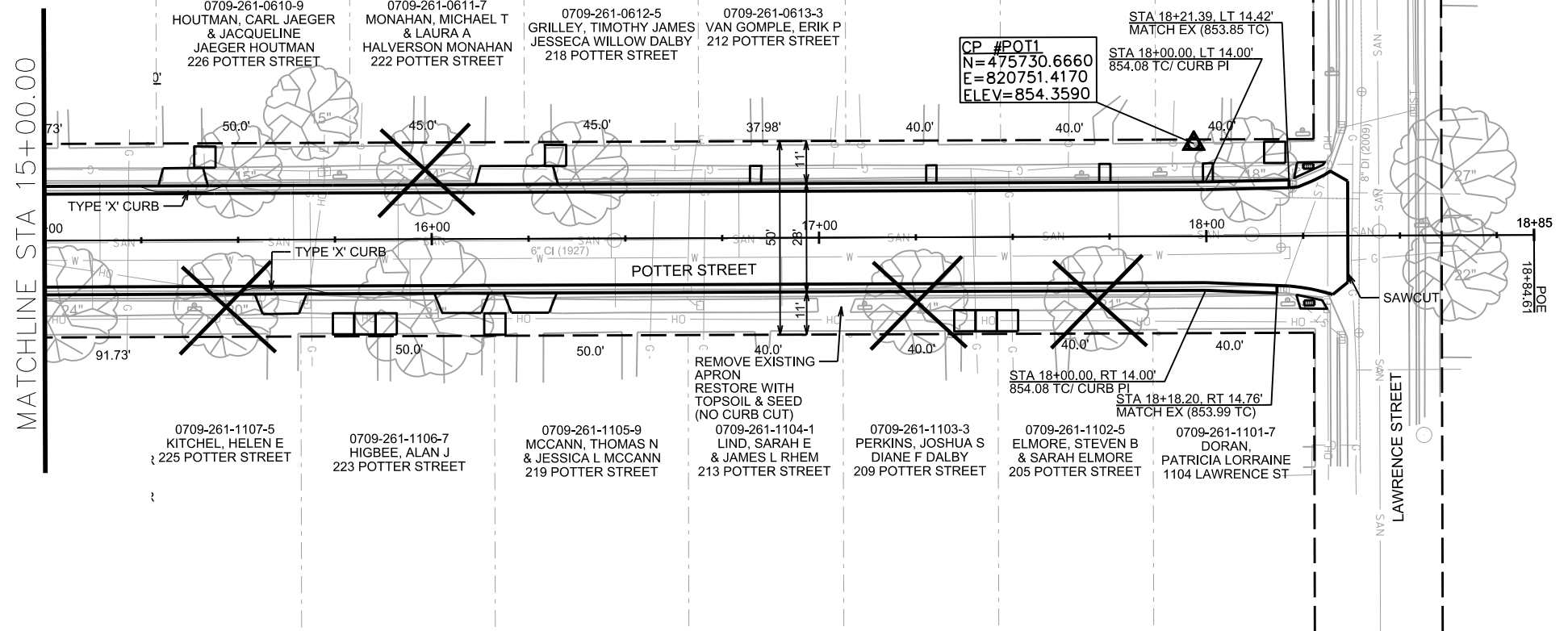
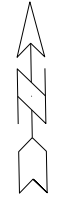
POLYMER SHALL BE APPLIED TO DISTURBED AREAS AS DIRECTED BY THE CONSTRUCTION ENGINEER.

PLAN AND PROFILE

POTTER STREET CITY OF MADISON



PLOT SCALE: _____
 PLOT NAME: _____
 REV. DATE: _____
 ORIGINATOR: CITY OF MADISON, STREETS DIVISION



PLOT SCALE:
PLOT NAME:
REV. DATE:
ORIGINATOR: CITY OF MADISON, STREETS DIVISION

* REVISED 7-9-15

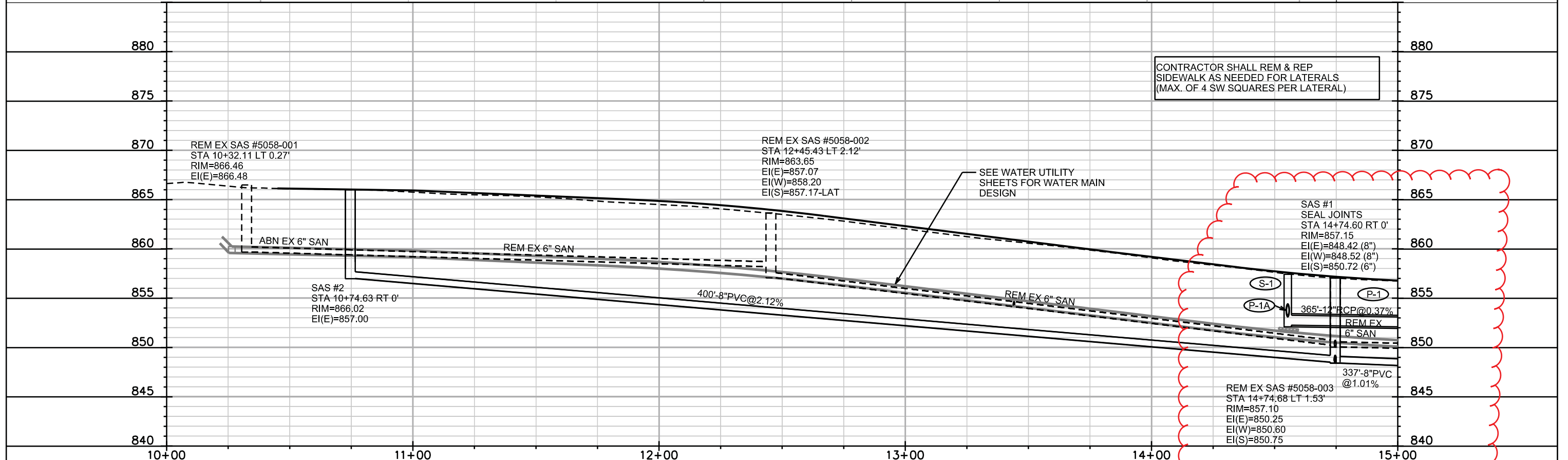
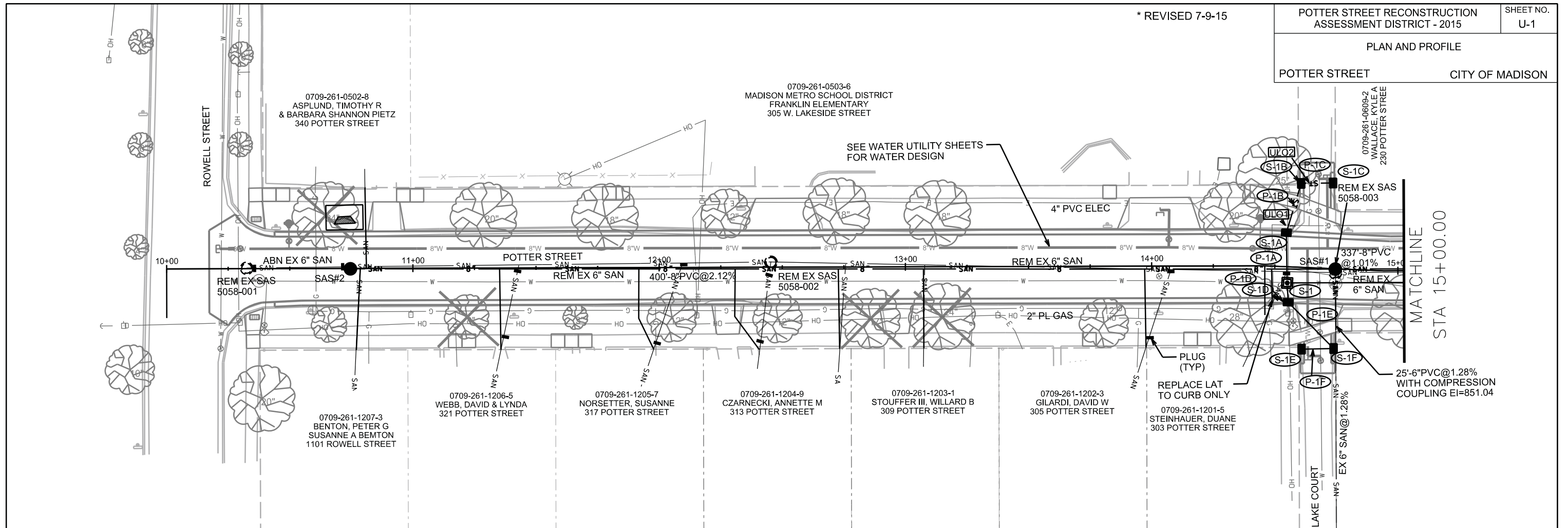
POTTER STREET RECONSTRUCTION
ASSESSMENT DISTRICT - 2015

SHEET NO.
U-1

PLAN AND PROFILE

POTTER STREET

CITY OF MADISON

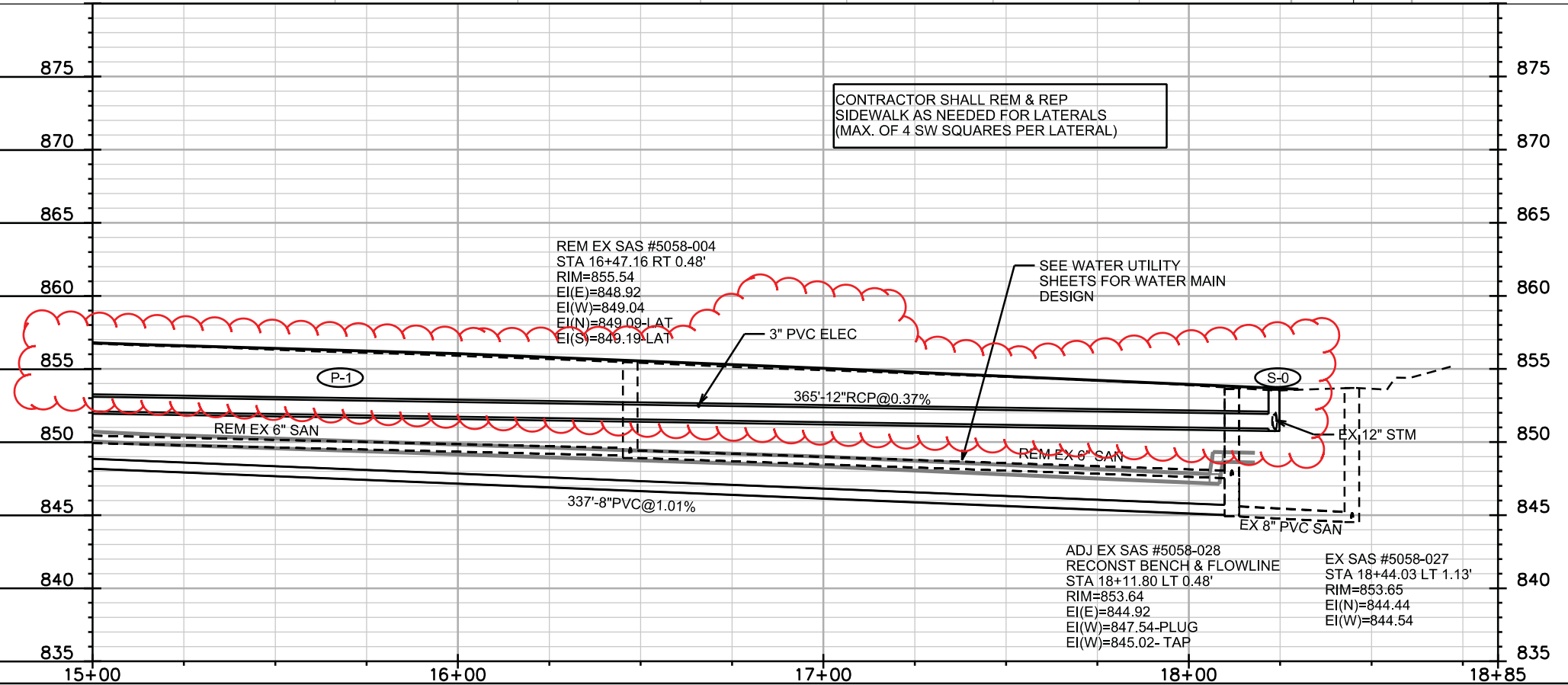
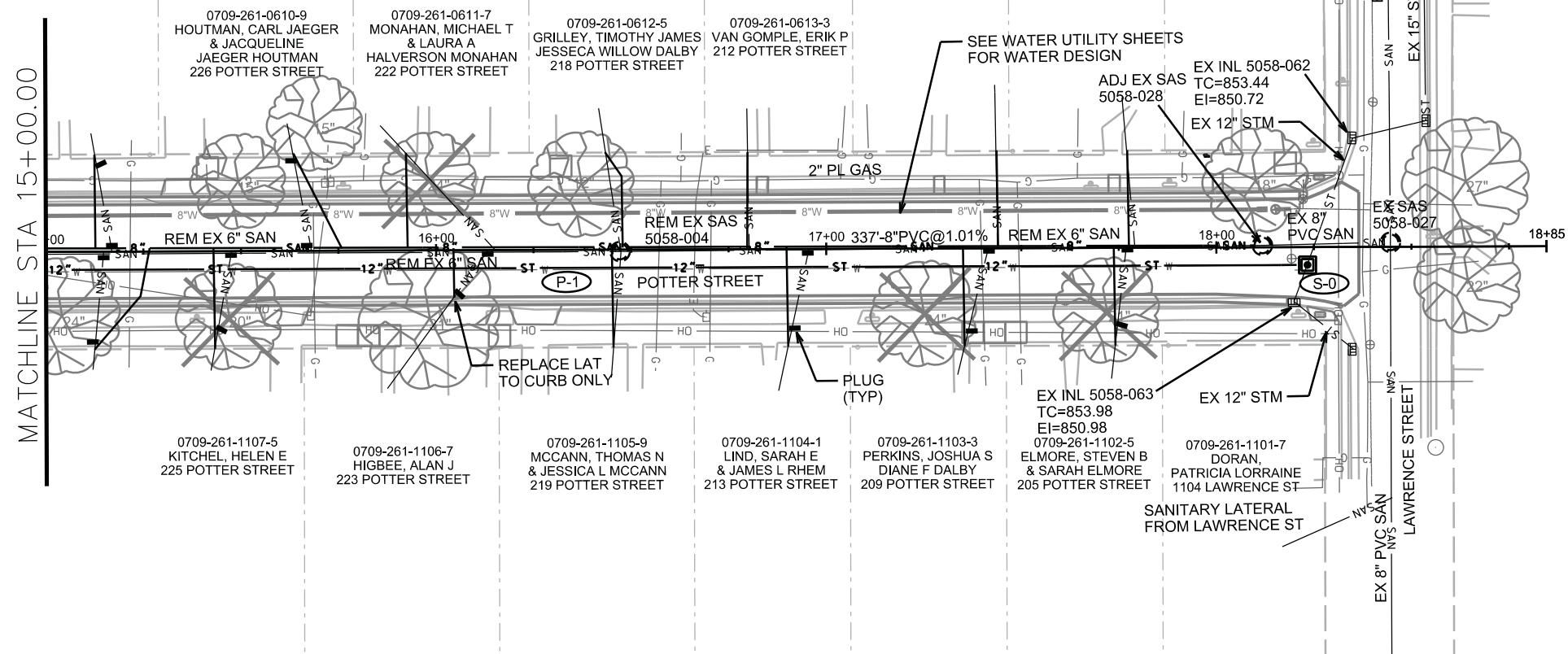


PLOT SCALE: _____

PLOT NAME: _____

REV. DATE: _____

ORIGINATOR: CITY OF MADISON, STREETS DIVISION



PLOT SCALE: _____

PLOT NAME: _____

REV. DATE: _____

ORIGINATOR: CITY OF MADISON, STREETS DIVISION

SANITARY SEWER SCHEDULE

POTTER ST RECONSTRUCTION
PROJECT NO. 53W1506

SHEET NO.
U-3

SANITARY SEWER SCHEDULE CITY OF MADISON

PROPOSED SANITARY STRUCTURES

SAS NO.	STATION	LOCATION (OFFSET)	TOP OF CASTING	E.I.	DEPTH	NOTES
POTTER ST						
SAS #1	14+74.60	RT-0	857.15	848.42	8.73	SEAL JOINTS
SAS #2	10+74.63	RT-0	866.02	857.00	9.02	

PROPOSED SANITARY PIPES

FROM SAS (DNSTM)	TO SAS (UPSTM)	LGTH (FT)	DISCH. E.I.	INLET E.I.	SLOPE (%)	SIZE (DIA)	TYPE	NOTES
5058-028	SAS #1	337	845.02	848.42	1.01%	8"	SDR 35	TAP; RECONSTRUCT BENCH & FL
SAS #1	SAS #2	400	848.52	857.00	2.12%	8"	SDR 35	
SAS #1	RT-38'	25	850.72	851.04	1.28%	6"	SDR 35	

SANITARY STRUCTURE REMOVALS

SAS NO.	STATION	LOCATION (OFFSET)	EX TOP CASTING	EX EI	DEPTH	NOTES
5058-004	16+47.16	RT-.48	855.54	848.92	6.62	REMOVE
5058-003	14+74.68	RT-1.53	857.10	850.06	7.04	REMOVE
5058-002	12+45.43	LT-2.12	863.65	857.07	6.58	REMOVE
5058-001	10+32.51	LT-.27	866.48	859.68	6.80	REMOVE

SANITARY PIPE REMOVALS AND ABANDONMENTS

REMOVE FROM	REMOVE TO	LENGTH (FT)	PAID (Y/N)	SIZE (DIA)	NOTES
5058-001	SAS#2	41	N	6"	ABANDON WITH PLUGS
SAS#2	5058-002	166	N	6"	REMOVE
5058-002	5058-003	224	N	6"	REMOVE
5058-003	5058-004	167	N	6"	REMOVE
5058-004	5058-005	159	N	6"	REMOVE
5058-003	38' RT	34	N	6"	REMOVE

SANITARY STRUCTURE ADJUSTMENTS

SAS NO.	STATION	LOCATION (OFFSET)	EX TOP CASTING	PROP TOC	ADJUST AMOUNT (IN)	AVAILABLE ADJUSTMENT (IN)	STRUCTURE TYPE	NOTES
5058-028	18+11.80	LT-.48	853.64	853.82	-2.16	9	PRECAST 4' ROUND	ADJUST; TAP; RECONSTRUCT BENCH AND FLOWLINES

PLOT SCALE: ---

PLOT NAME: ---

REV. DATE: ---

ORIGINATOR: CITY OF MADISON STREETS DIVISION

STORM SEWER SCHEDULE

PROPOSED STORM STRUCTURES

STRUC. NO.	STATION	LOCATION (OFFSET)	TYPE	TOP OF CASTING	E.I.	DEPTH	NOTES
POTTER ST							
S-0	18+23.33	RT-4.59	3X3 SAS	853.59	850.92	2.67	FP; W/R-1550-0054; (1)
* S-1	14+55.32	RT-6.45	3X3 SAS	857.42	852.26	5.16	W/R-1550-0054
* S-1A	14+54.14	LT-13.98	H INLET	857.80	852.96	4.84	W/3067-7004-V
* S-1B	14+59.28	LT-34.23	H INLET	857.80	853.06	4.74	W/3362-L
* S-1C	14+72.26	LT-34.94	H INLET	857.50	854.19	3.31	W/3362-L
* S-1D	14+56.05	RT-14.29	H INLET	857.73	853.50	4.23	W/3067-7004-V
* S-1E	14+62.28	RT-33.09	H INLET	857.95	854.65	3.30	W/3362-L
* S-1F	14+75.26	RT-32.32	H INLET	857.85	854.55	3.30	FP; W/3362-L

PROPOSED STORM PIPES

PIPE NO.	FROM (DNSTM)	TO (UPSTM)	DISCH. E.I.	INLET E.I.	PLAN LGTH (FT)	PIPE LGTH (FT)	SLOPE (%)	PIPE SIZE	TYPE	NOTES
* P-1	S-0	S-1	850.92	852.26	368.0	365.0	0.37%	12"	RCP	
* P-1A	S-1	S-1A	852.76	852.96	21.0	18.0	1.11%	12"	RCP	
* P-1B	S-1A	S-1B	852.96	853.06	21	18.0	0.56%	12"	RCP	
* P-1C	S-1B	S-1C	854.13	854.19	13	11.0	0.55%	12"	RCP	
* P-1D	S-1	S-1D	853.26	853.50	8.0	5.0	4.80%	12"	RCP	
* P-1E	S-1D	S-1F	854.00	854.55	20.0	17.0	3.24%	12"	RCP	
* P-1F	S-1F	S-1E	854.55	854.65	13.0	10.0	1.00%	12"	RCP	

STORM SEWER ULOs

ULO NO.	STATION	LOCATION (OFFSET)	TYPE	ELEV TOP	ELEV BOTTOM	NOTES
* ULO-1	14+54.50	LT-16.80	GAS	854.63		STORM SEWER REVISED
* ULO-2	14+62.80	LT-34.30	GAS	853.84		STORM SEWER REVISED
* ULO-3	16+66.50	RT-4.00	3" ELEC	852.64		STORM SEWER REVISED; DIG AND PULL CONDUIT

NOTE: PLAN LENGTH IS FROM CENTER OF STRUCTURE TO CENTER OF STRUCTURE. PIPE LENGTH IS ACTUAL LENGTH OF PIPE FROM STRUCTURE WALL TO STRUCTURE WALL. SLOPE CALCULATED USING PIPE LENGTH.

STANDARD NOTES:

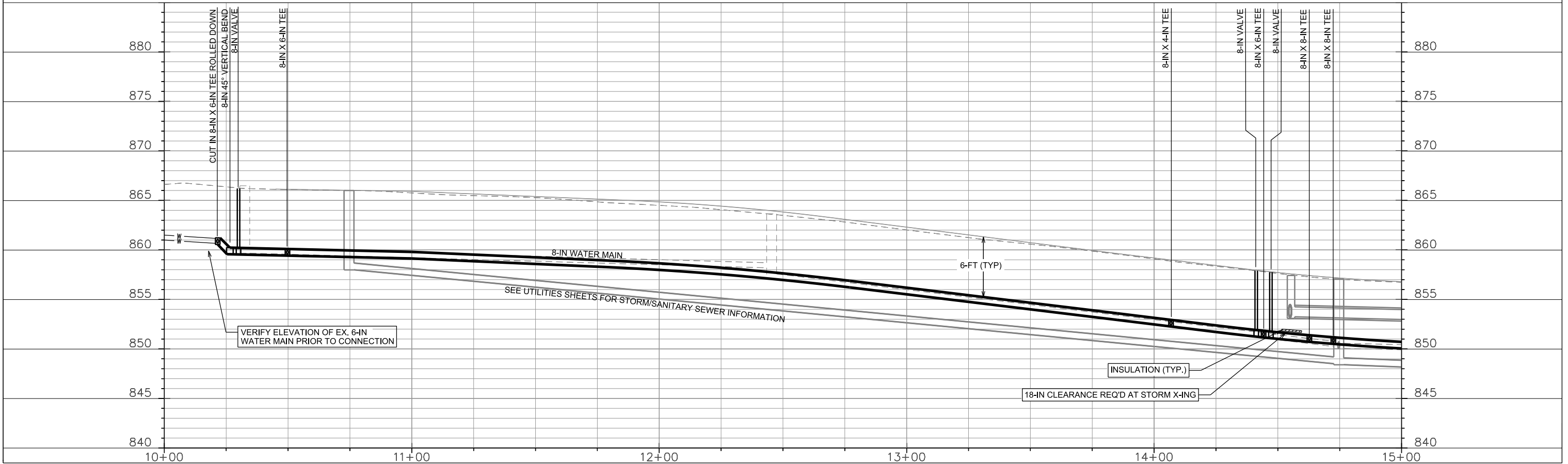
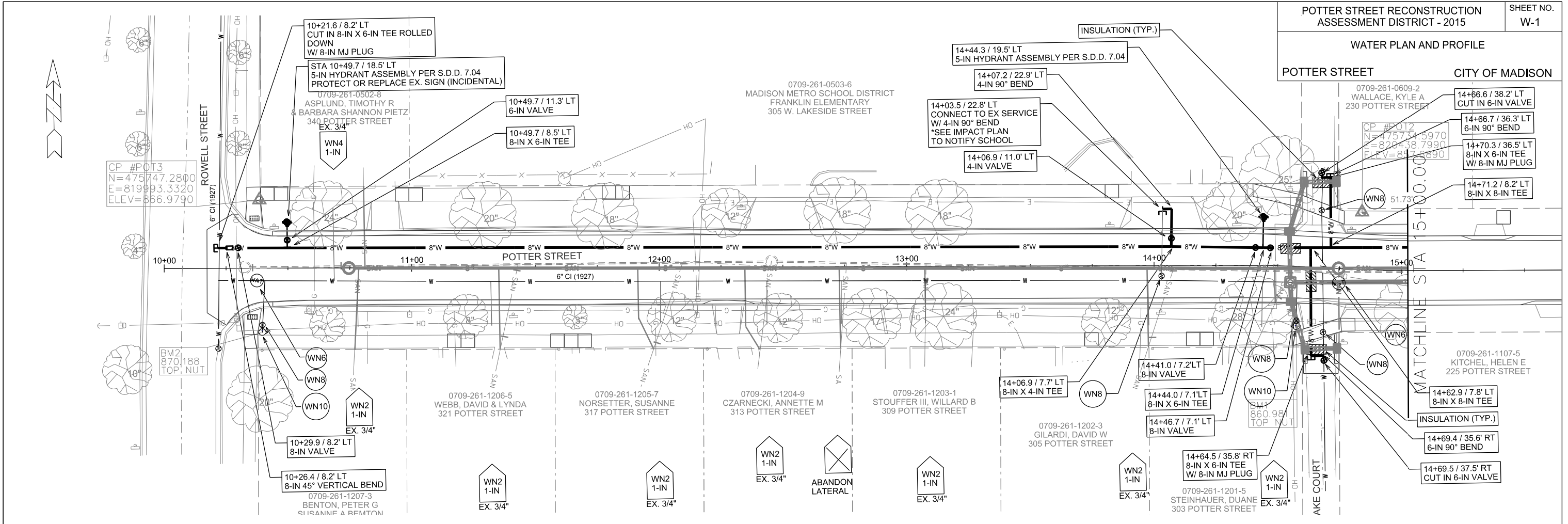
- ABBREVIATIONS: AE = APRON ENDWALL; RCP = REINFORCED CONCRETE PIPE; HERCP = HORIZONTAL ELLIPTICAL REINFORCED CONCRETE PIPE; DNA = DOES NOT APPLY; SAS = SEWER ACCESS STRUCTURE; LP = LOW POINT INLET STRUCTURE; FP = FIELD POURED STRUCTURE; TR = TOP OF CONCRETE ROOF; NCM = NO CROWN MATCH FOR PIPES; UD = UNDERDRAIN
- APPROXIMATE DISCHARGE E.I. GIVEN, ADJUST E.I. AND PIPE SLOPE IN THE FIELD.
- TOP OF CASTING GRADE GIVEN IS THE TOP OF CURB FOR INLET STRUCTURES AND THE FLOWLINE OF THE CLOSED CASTING FOR SAS's.
- TOP OF CONCRETE ROOF (TR) IS 1.25' BELOW TOP OF CASTING UNLESS OTHERWISE NOTED.
- ALL REINFORCED CONCRETE PIPES TO BE CLASS III UNLESS OTHERWISE NOTED.
- SURVEYOR TO CONFIRM THAT ALL INLET STATION / OFFSETS LINE UP WITH PROPOSED CURB AND GUTTER.
- ALL STRUCTURES CALLED OUT AS FIELD POURED SHALL BE FIELD POURED. ALL OTHER STRUCTURES (NOT INDICATED AS FIELD POURED) SHALL BE SUBMITTED TO CITY ENGINEERING FOR APPROVAL IF PRECAST STRUCTURES ARE PREFERRED. CONTACT COREY STELLJES OF CITY ENGINEERING AT (608) 266-9721 FOR PRECAST APPROVALS, EMAIL SHOP DRAWINGS TO CSTELLJES@CITYOFMADISON.COM.

SPECIFIC NOTES

- (1) STRUCTURE DEPTH SHALL REQUIRE PIPE WALLS BE POURED INTEGRAL TO ROOF. A 4" CASTING SHALL BE ACCEPTED.

WATER PLAN AND PROFILE

POTTER STREET CITY OF MADISON

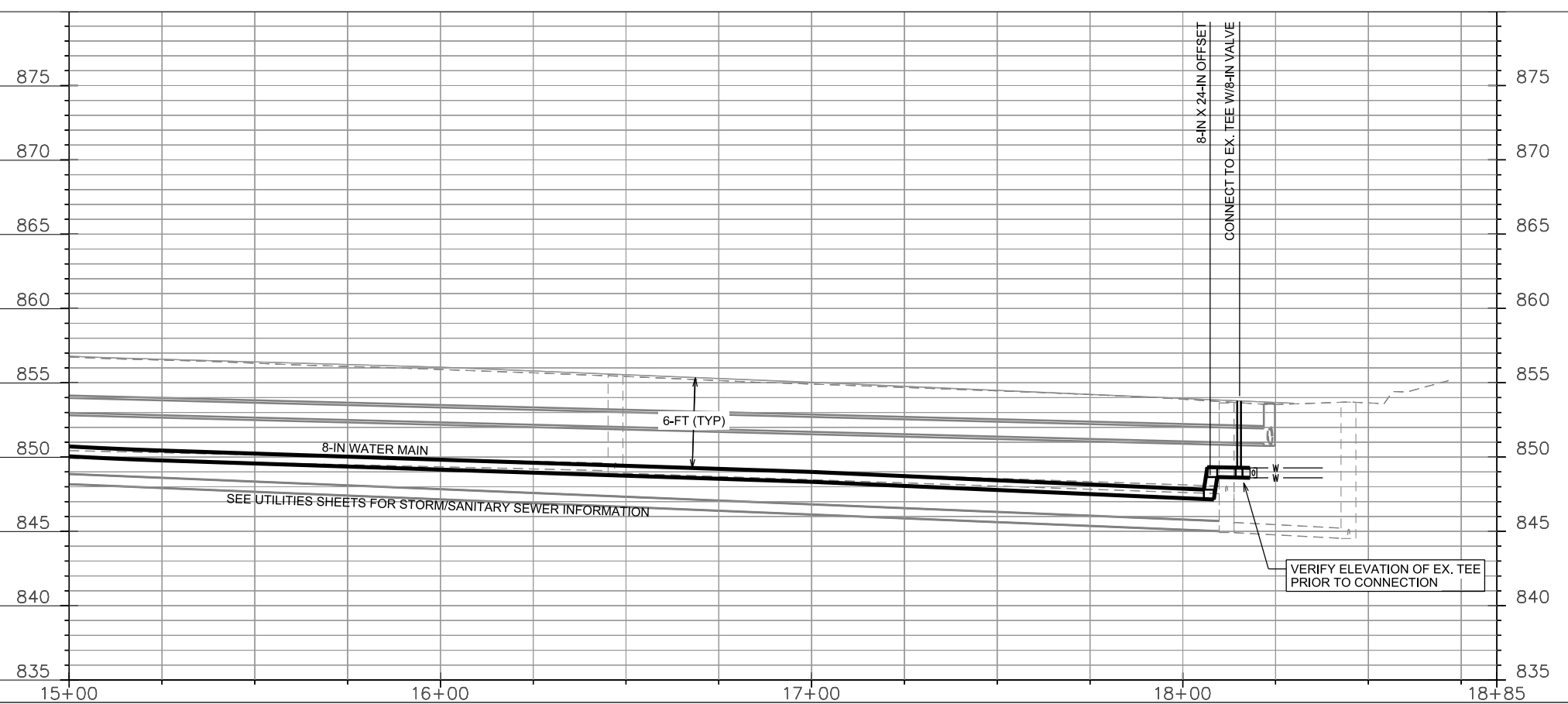
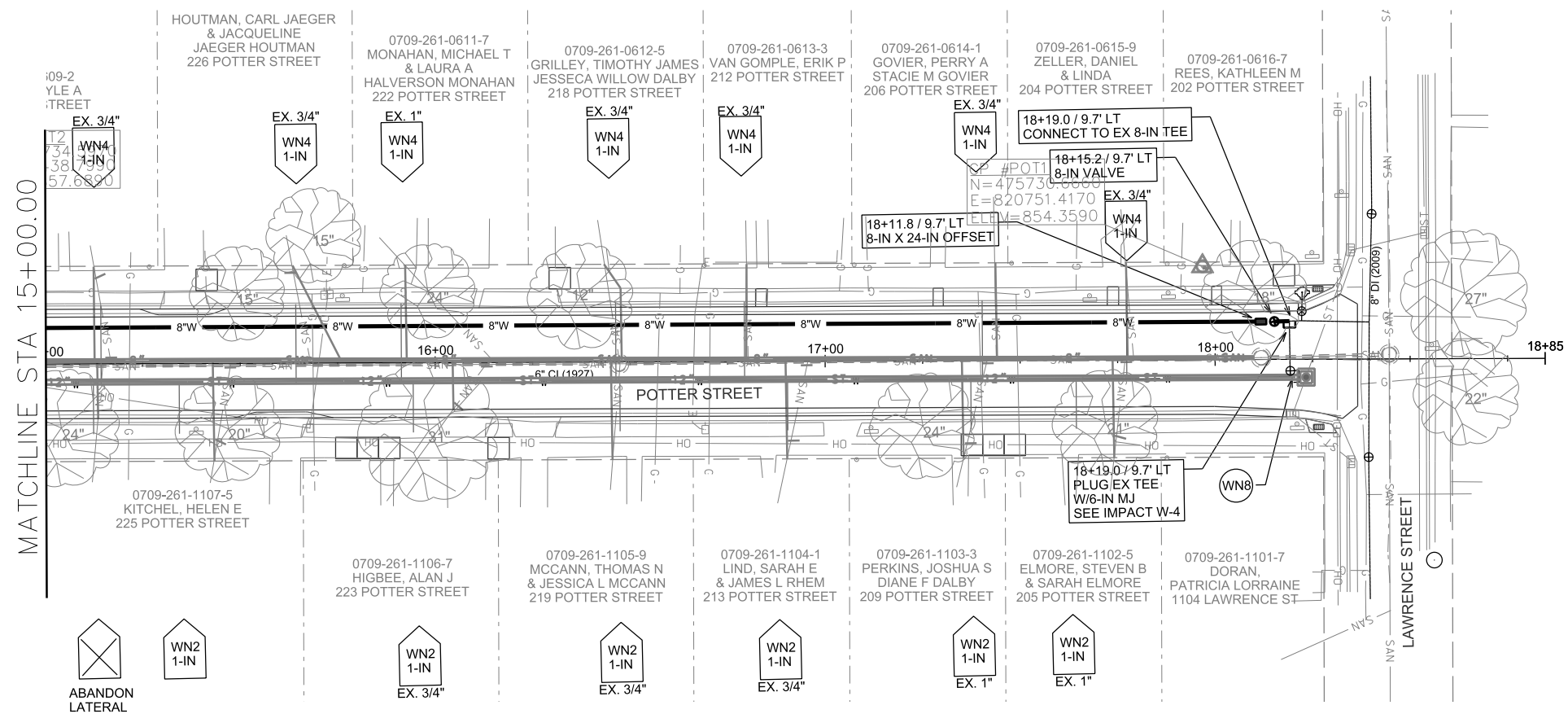


PLOT SCALE: _____

PLOT NAME: _____

REV. DATE: _____

ORIGINATOR: CITY OF MADISON, STREETS DIVISION



PLOT SCALE:

PLOT NAME:

REV. DATE:

ORIGINATOR: CITY OF MADISON, STREET'S DIVISION

CONSTRUCTION NOTES:

1. CONSTRUCT NEW WATER MAIN 6.0' BELOW FINISHED GRADE, UNLESS OTHERWISE NOTED. INSULATE MAIN WITH POLYSTYRENE BOARD AT UTILITY CROSSINGS OR OTHER AREAS IDENTIFIED BY ENGINEER AS HAVING INADEQUATE COVER.
2. VERIFY SIZE OF EXISTING WATER SERVICES AND RECONNECT SERVICES AS INDICATED.
3. MINIMIZE DISRUPTION OF SERVICE TO EXISTING CUSTOMERS. NOTIFY PER CONTRACT REQUIREMENTS OF ANY PLANNED WATER OUTAGE.
4. THE EXISTING UTILITIES SHOWN ON THIS PLAN REPRESENT THE BEST INFORMATION AVAILABLE TO THE WATER UTILITY AT THE TIME OF PLAN PREPARATION. CONTRACTOR IS RESPONSIBLE FOR HAVING EACH UTILITY LOCATED PRIOR TO COMMENCING WORK.

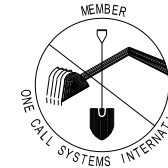
DISCLAIMER NOTE:
UTILITY LOCATIONS SHOWN ARE APPROXIMATE ONLY. IT SHALL BE THE CONTRACTOR'S RESPONSIBILITY TO DETERMINE THE EXACT HORIZONTAL AND VERTICAL LOCATION OF ALL EXISTING UNDERGROUND AND OVERHEAD UTILITIES PRIOR TO COMMENCING WORK.

- WN1 REPLACE THE EXISTING LEAD SERVICE WITH A NEW COPPER SERVICE.
- WN2 EXTEND AND RECONNECT THE EXISTING COPPER SERVICE TO THE NEW WATER MAIN.
- WN3 EXISTING SERVICE TO BE ABANDONED WHEN THE WATER MAIN IS CUT OFF.
- WN4 DISCONNECT FROM THE OLD WATER MAIN AND RECONNECT THE EXISTING COPPER WATER SERVICE LATERAL TO THE NEW WATER MAIN.
- WN5 RELOCATE THE EXISTING FIRE HYDRANT.
- WN6 ABANDON WATER VALVE ACCESS STRUCTURE.
- WN7 FURNISH AND INSTALL THE NEW TOP SECTION FOR THE WATER ACCESS STRUCTURE.
- WN8 ABANDON THE VALVE BOX.
- WN9 FURNISH THE DITCH, COMPACTION, AND ALL MATERIALS AND LABOR FOR THE INSTALLATION OF NEW SERVICE LATERAL.
- WN10 REMOVE AND SALVAGE EXISTING HYDRANT
- WN11 REPLACE THE EXISTING COPPER SERVICE WITH A COPPER SERVICE

TO OBTAIN LOCATION OF PARTICIPANTS' UNDERGROUND FACILITIES BEFORE YOU DIG IN WISCONSIN

CALL DIGGERS HOTLINE
TOLL FREE
811 OR 1-800-242-8511
FAX-A-LOCATE 1-800-338-3860
TDD (FOR HEARING IMPAIRED) 1-800-542-2289

WIS. STATUTE 182.0175 (1974)
REQUIRES MIN. OF 3 WORK DAYS
NOTICE BEFORE YOU EXCAVATE.



ESTIMATE OF MATERIALS SUPPLIED BY CONTRACTOR:

** ESTIMATE OF MATERIALS IS FOR INFORMATION ONLY. ENGINEER DOES NOT GUARANTEE ACCURACY OF MATERIAL TAKE-OFF.*

20-FT - 4-IN PIPE
35-FT - 6-IN PIPE
860-FT - 8-IN PIPE

1000-FT - POLYWRAP

4 - 8-IN VALVE & BOX
3 - 6-IN VALVE & BOX
1 - 4-IN VALVE & BOX

1 - 8-IN 45° BEND
1 - 8-IN X 24-IN OFFSET
4 - 6-IN 90° BEND
2 - 4-IN 90° BEND

1 - 8-IN X 4-IN TEE
4 - 8-IN X 6-IN TEE
2 - 8-IN X 8-IN TEE

1 - 6-IN MJ PLUG
3 - 8-IN MJ PLUG

2 - 5-IN HYDRANT

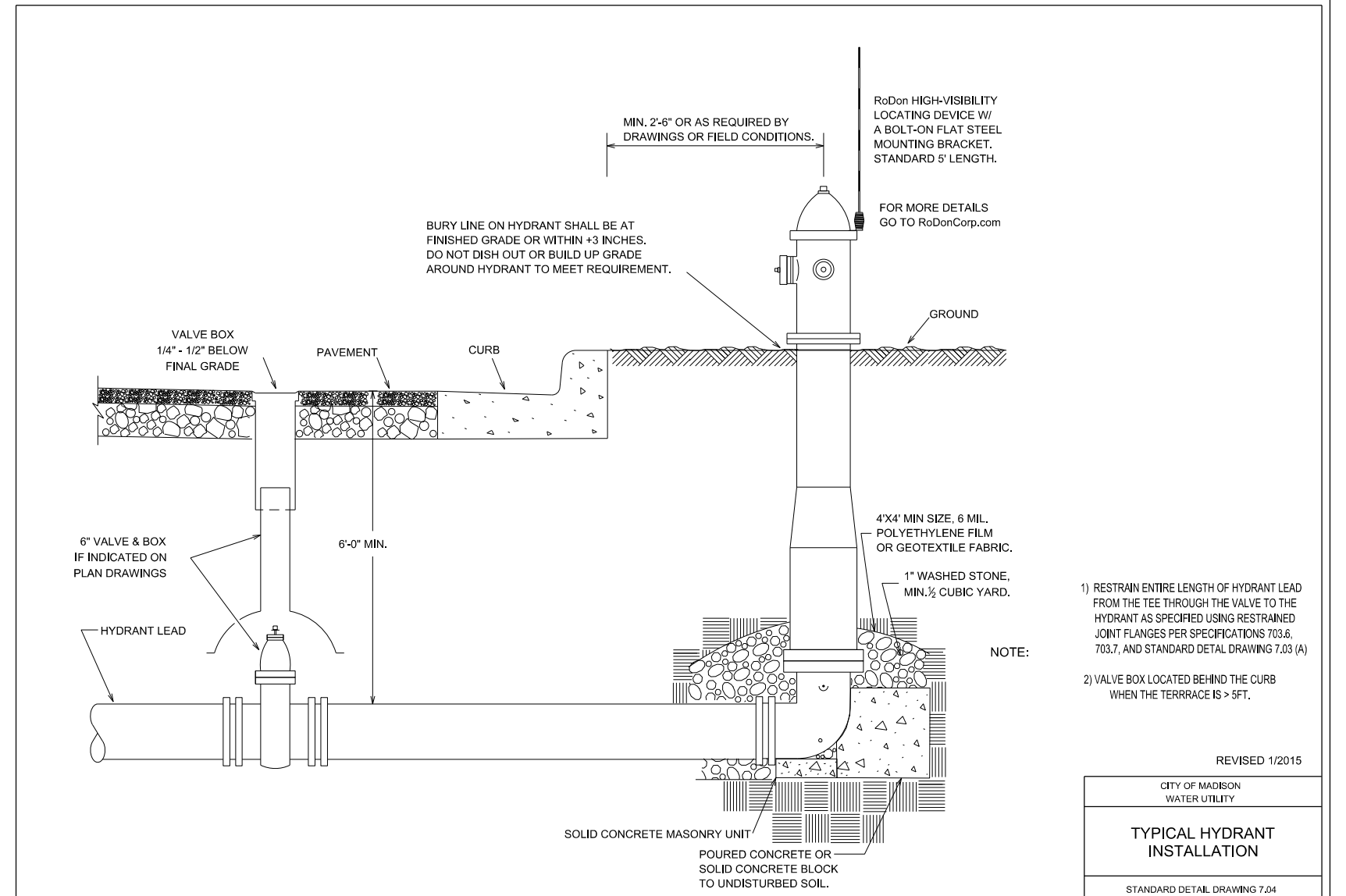
32-FT - 2-IN STYROFOAM INSULATION

1-IN COPPER SERVICE PIPING (AS REQUIRED)

ESTIMATE OF MATERIALS SALVAGED:

** ESTIMATE OF MATERIALS IS FOR INFORMATION ONLY. ENGINEER DOES NOT GUARANTEE ACCURACY OF MATERIAL TAKE-OFF.*

NONE



- NOTE:
- 1) RESTRAIN ENTIRE LENGTH OF HYDRANT LEAD FROM THE TEE THROUGH THE VALVE TO THE HYDRANT AS SPECIFIED USING RESTRAINED JOINT FLANGES PER SPECIFICATIONS 703.6, 703.7, AND STANDARD DETAIL DRAWING 7.03 (A)
 - 2) VALVE BOX LOCATED BEHIND THE CURB WHEN THE TERRACE IS > 5FT.

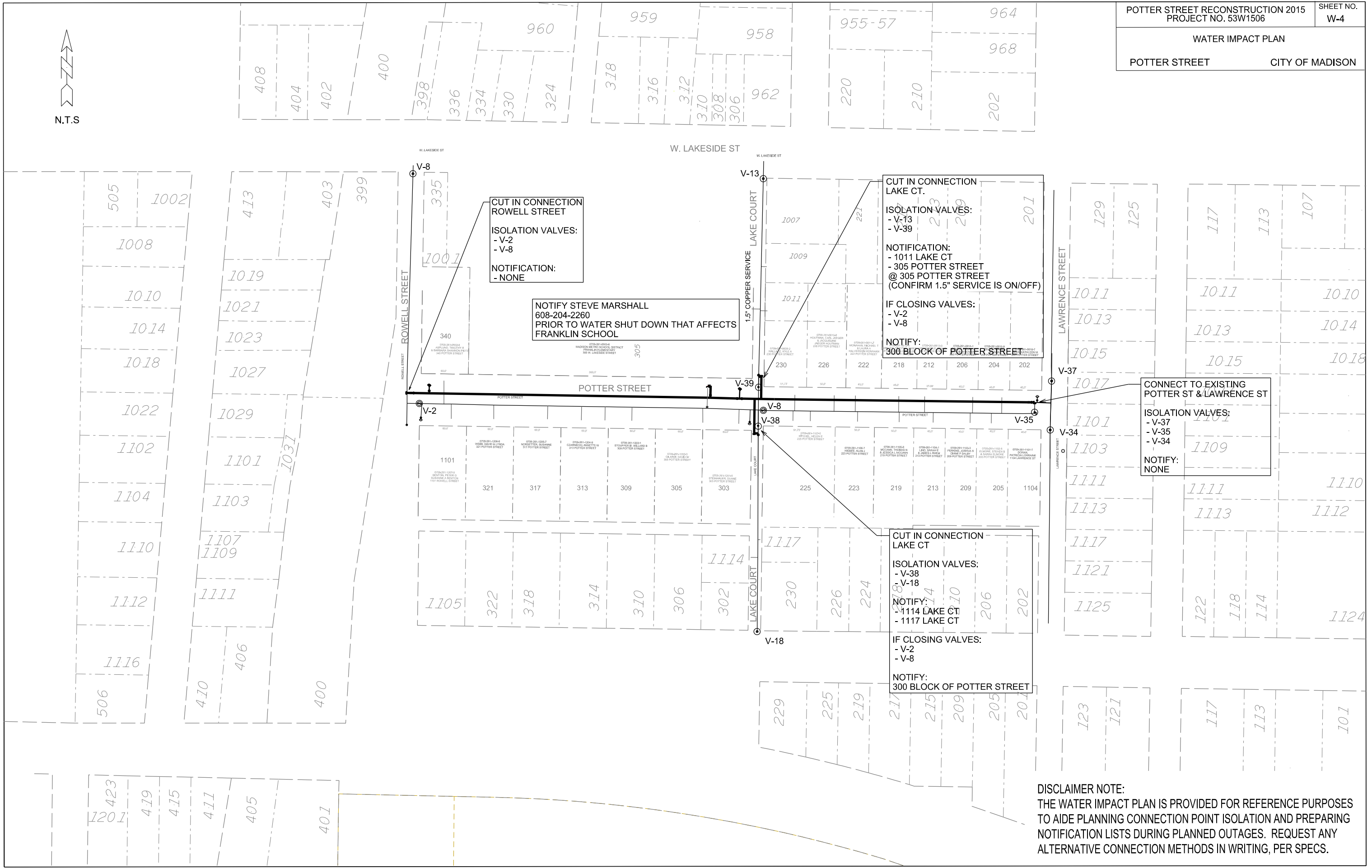
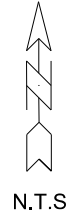
REVISED 1/2015
CITY OF MADISON WATER UTILITY
TYPICAL HYDRANT INSTALLATION
STANDARD DETAIL DRAWING 7.04

PLOT SCALE:

PLOT NAME:

REV. DATE:

ORIGINATOR: CITY OF MADISON, STREETS DIVISION



CUT IN CONNECTION ROWELL STREET

ISOLATION VALVES:
- V-2
- V-8

NOTIFICATION:
- NONE

**NOTIFY STEVE MARSHALL
608-204-2260
PRIOR TO WATER SHUT DOWN THAT AFFECTS
FRANKLIN SCHOOL**

CUT IN CONNECTION LAKE CT.

ISOLATION VALVES:
- V-13
- V-39

NOTIFICATION:
- 1011 LAKE CT
- 305 POTTER STREET
**@ 305 POTTER STREET
(CONFIRM 1.5" SERVICE IS ON/OFF)**

IF CLOSING VALVES:
- V-2
- V-8

**NOTIFY:
300 BLOCK OF POTTER STREET**

**CONNECT TO EXISTING
POTTER ST & LAWRENCE ST**

ISOLATION VALVES:
- V-37
- V-35
- V-34

NOTIFY:
NONE

CUT IN CONNECTION LAKE CT

ISOLATION VALVES:
- V-38
- V-18

NOTIFY:
- 1114 LAKE CT
- 1117 LAKE CT

IF CLOSING VALVES:
- V-2
- V-8

**NOTIFY:
300 BLOCK OF POTTER STREET**

DISCLAIMER NOTE:
THE WATER IMPACT PLAN IS PROVIDED FOR REFERENCE PURPOSES TO AIDE PLANNING CONNECTION POINT ISOLATION AND PREPARING NOTIFICATION LISTS DURING PLANNED OUTAGES. REQUEST ANY ALTERNATIVE CONNECTION METHODS IN WRITING, PER SPECS.

PLOT SCALE:

PLOT NAME:

REV. DATE:

ORIGINATOR: CITY OF MADISON, STREETS DIVISION

FILE NAME:

DATE:

CROSS SECTIONS

POTTER STREET

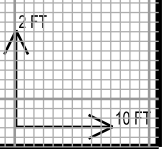
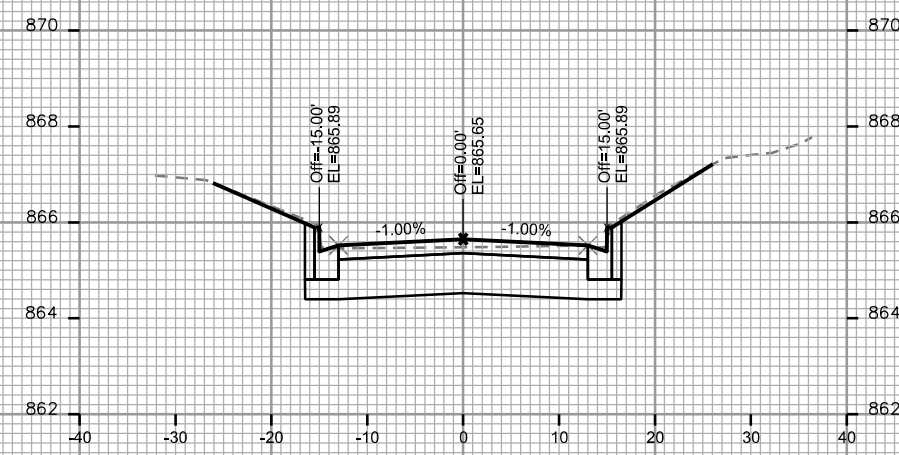
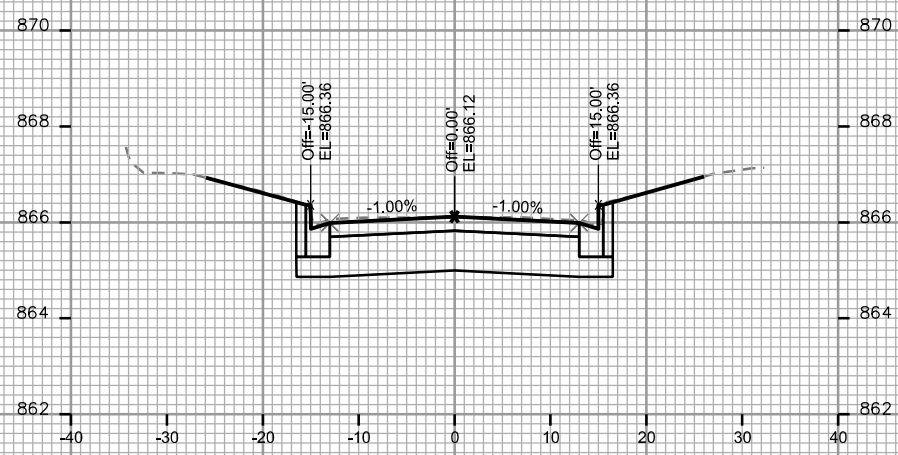
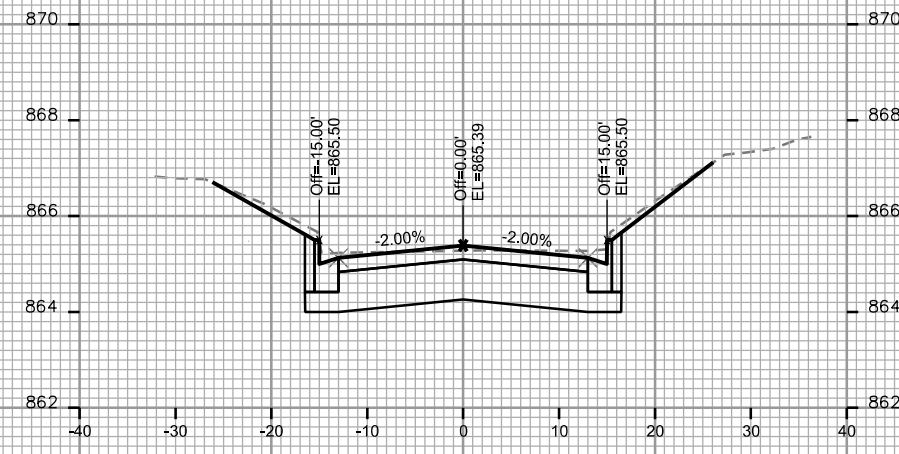
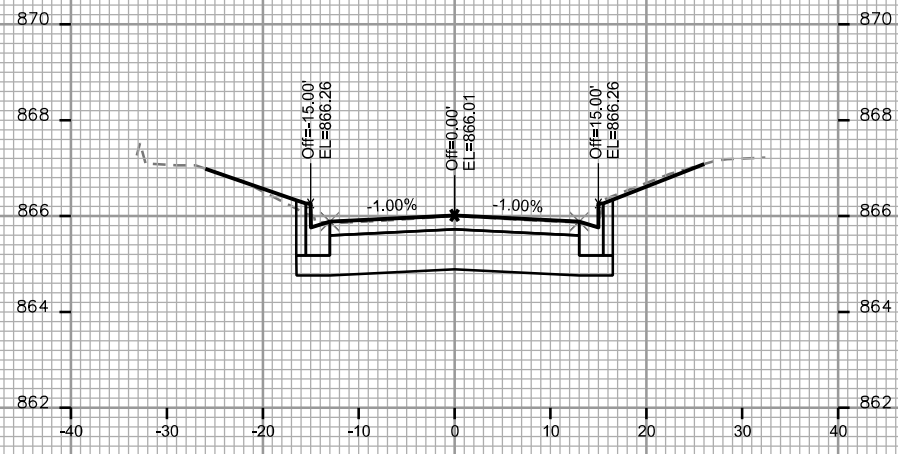
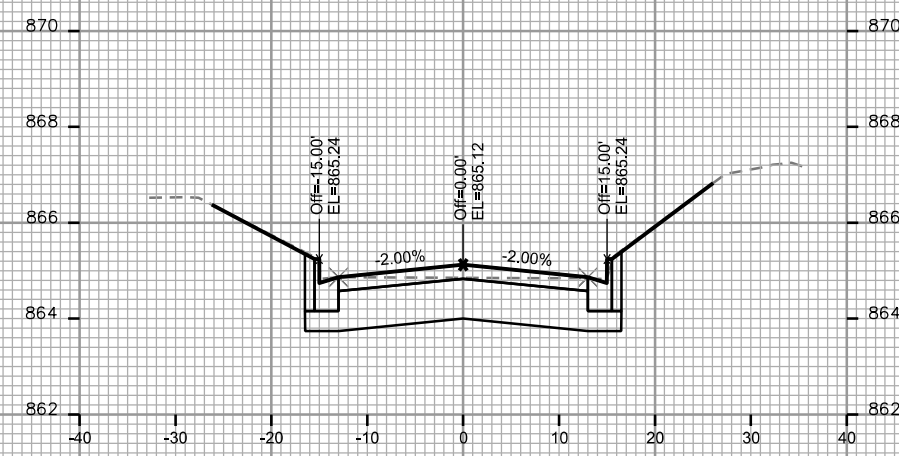
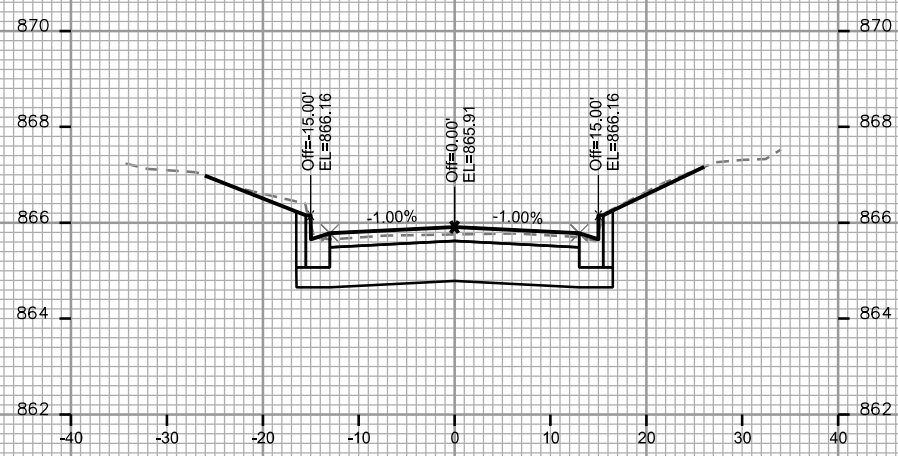
CITY OF MADISON

PLOT SCALE: _____

PLOT NAME: _____

REV. DATE: _____

ORIGINATOR: CITY OF MADISON, STREETS DIVISION



CROSS SECTIONS

POTTER STREET

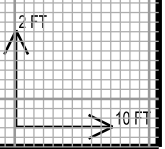
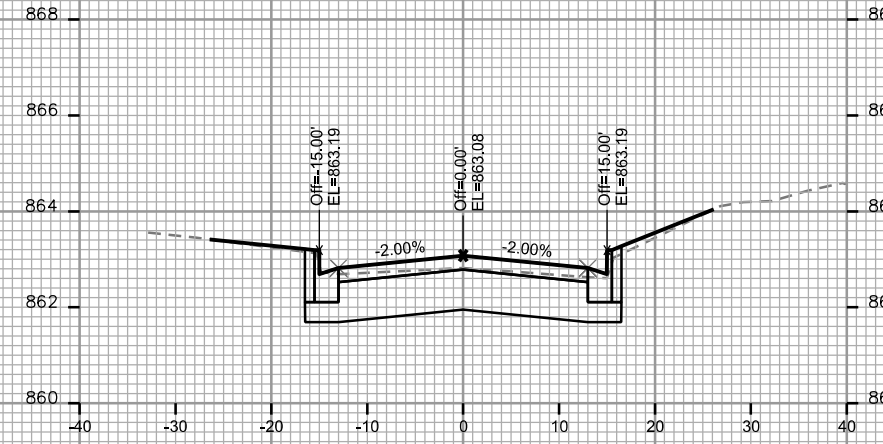
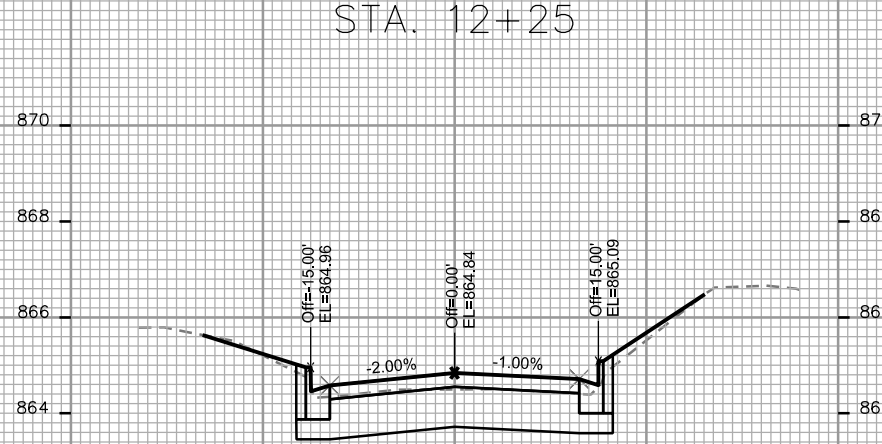
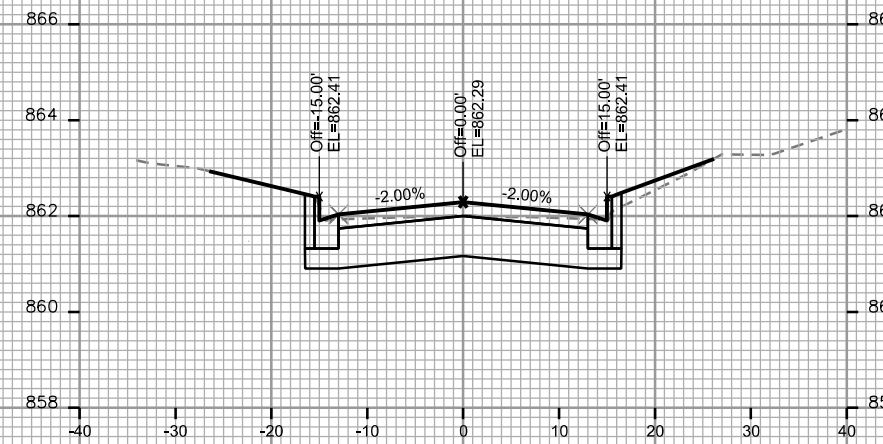
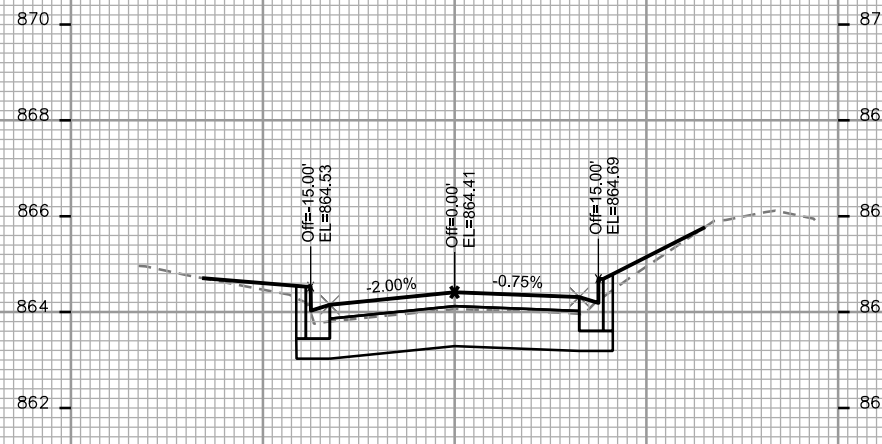
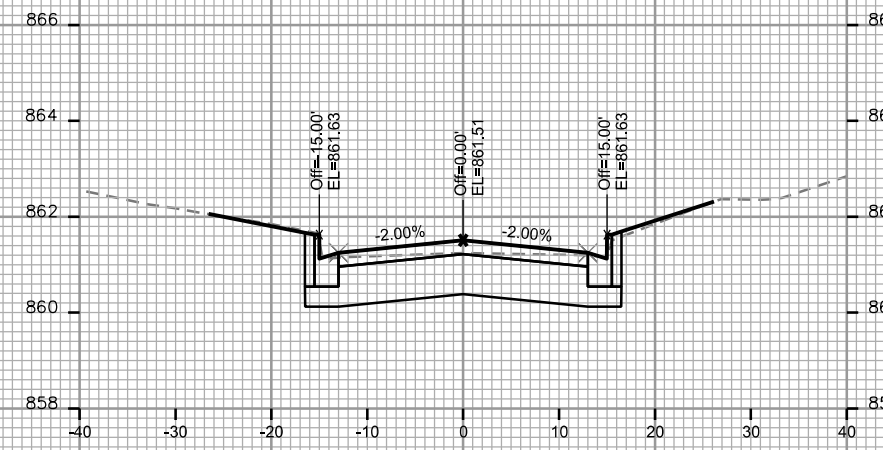
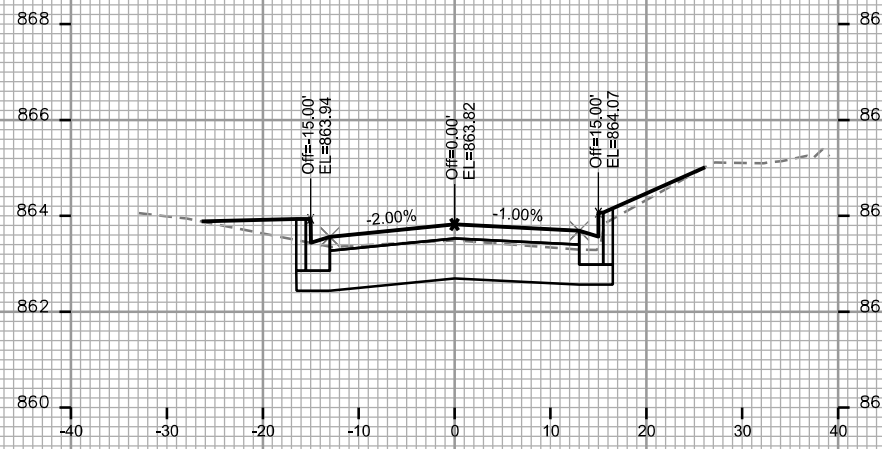
CITY OF MADISON

PLOT SCALE: _____

PLOT NAME: _____

REV. DATE: _____

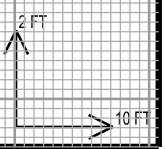
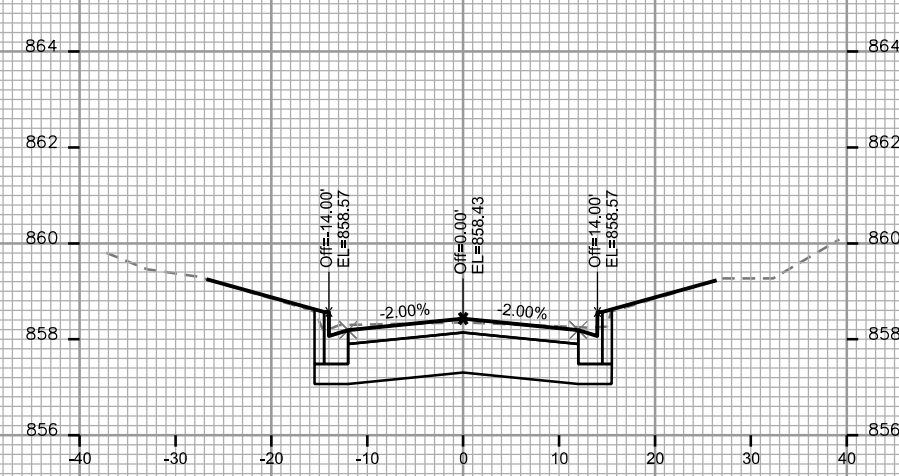
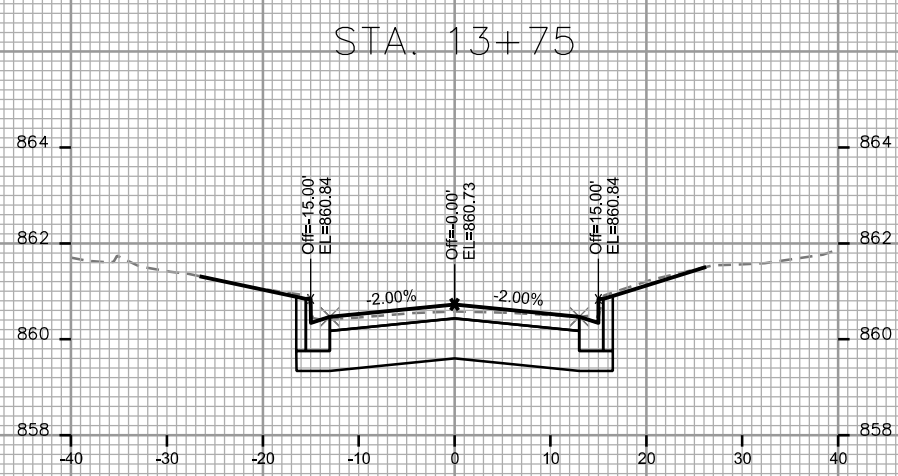
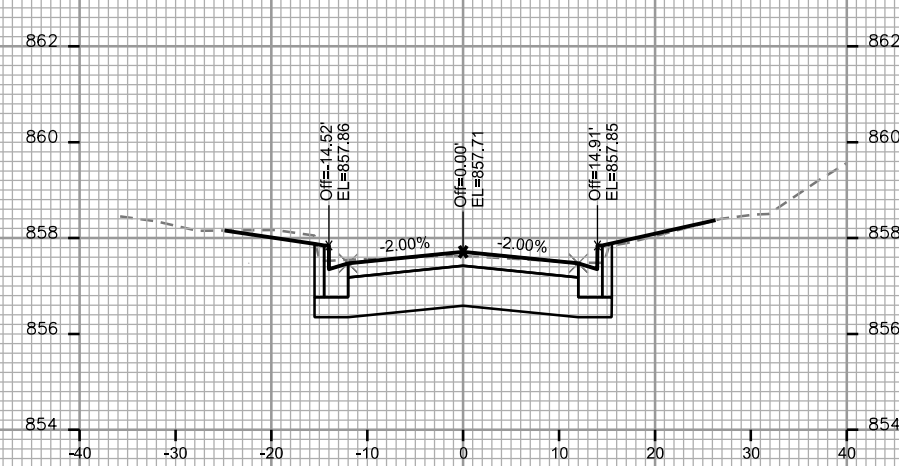
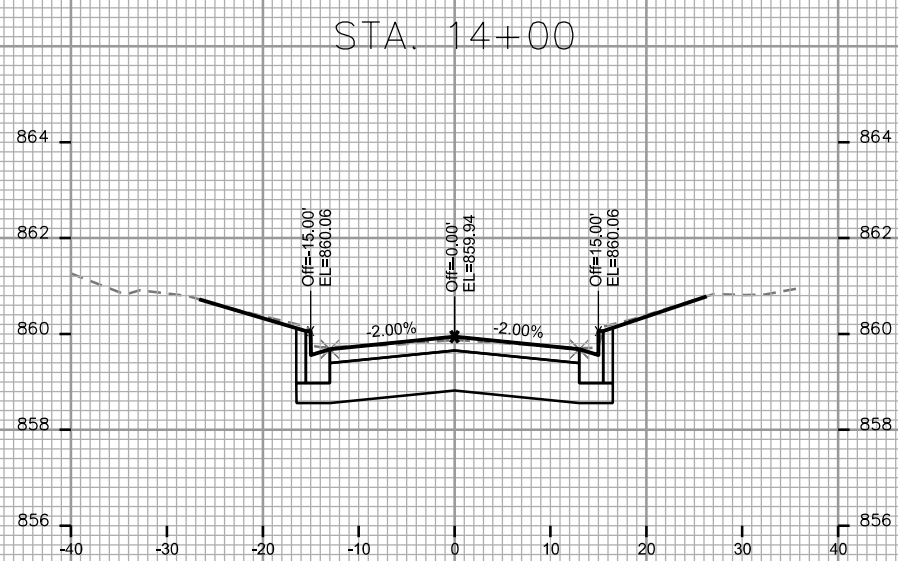
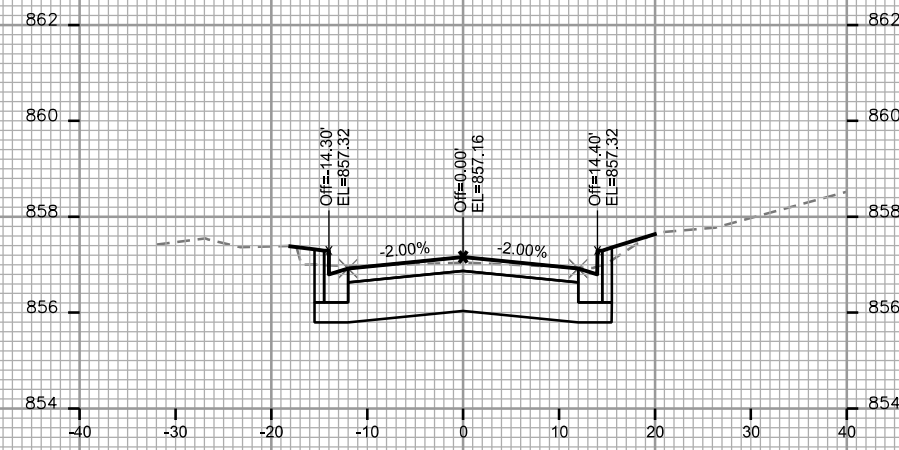
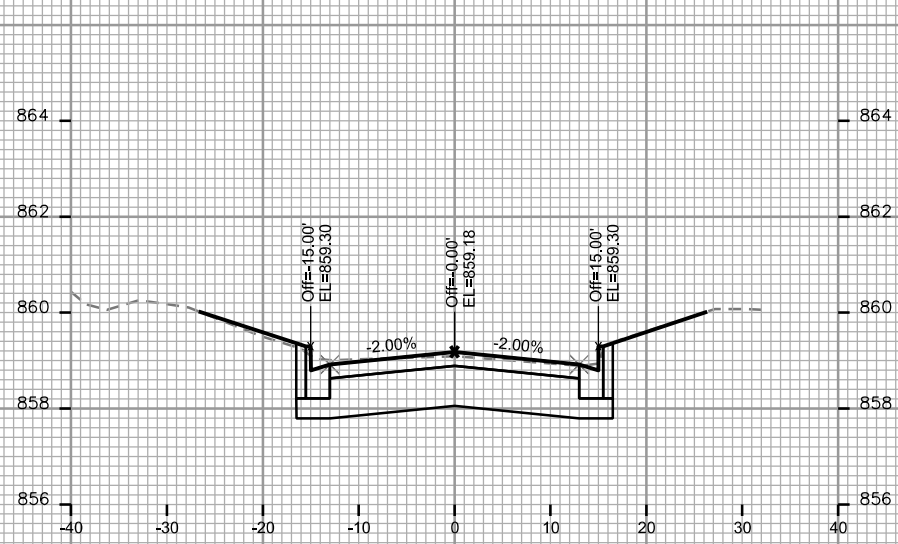
ORIGINATOR: CITY OF MADISON, STREETS DIVISION



CROSS SECTIONS

POTTER STREET

CITY OF MADISON



PLOT SCALE: _____

PLOT NAME: _____

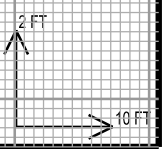
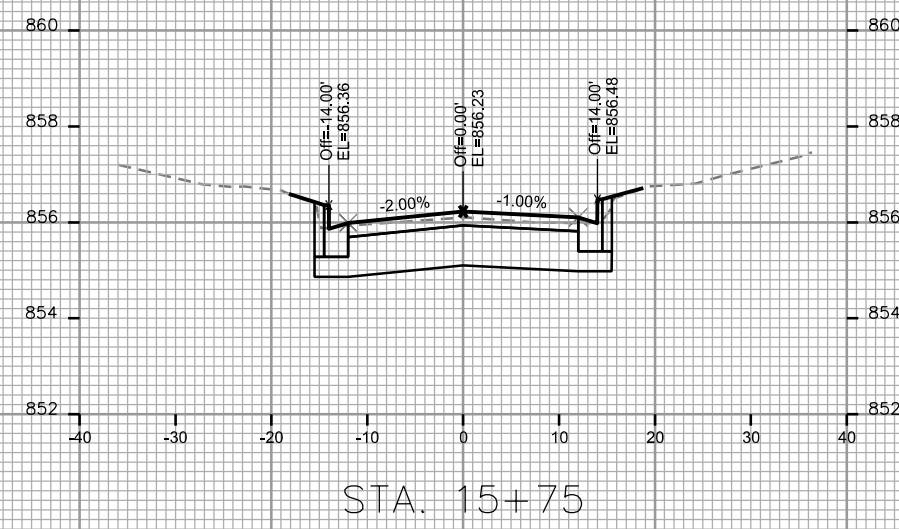
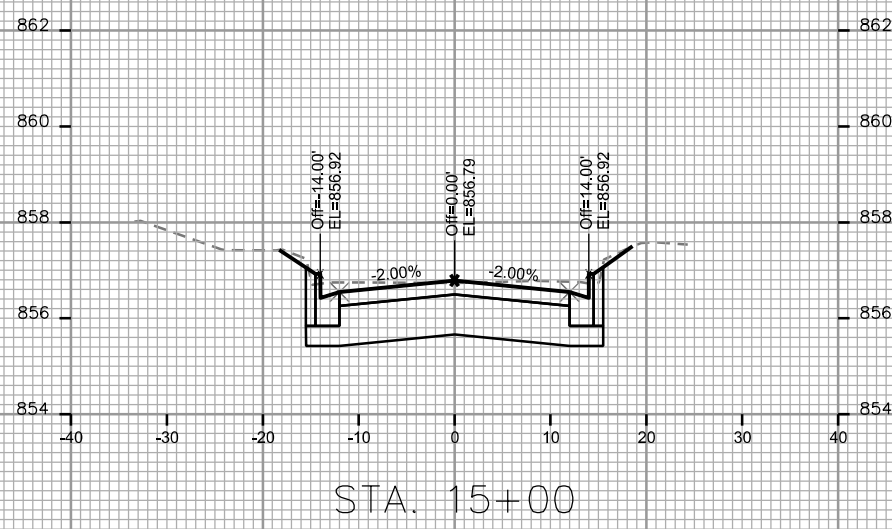
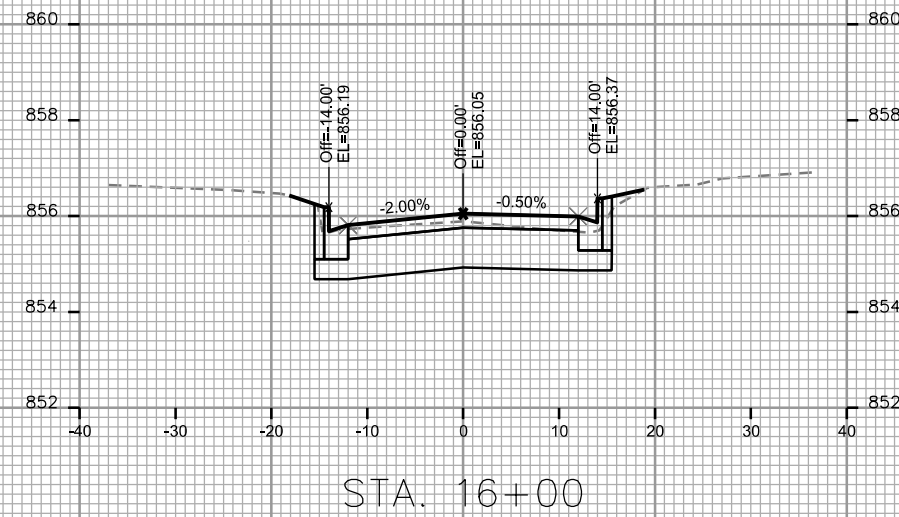
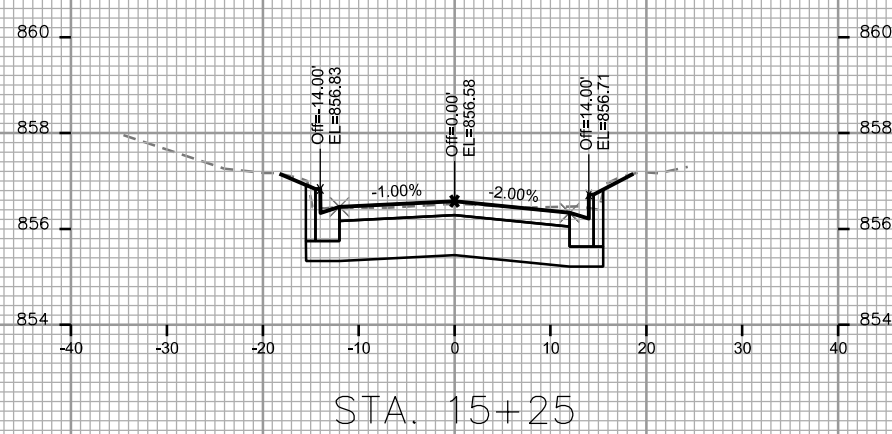
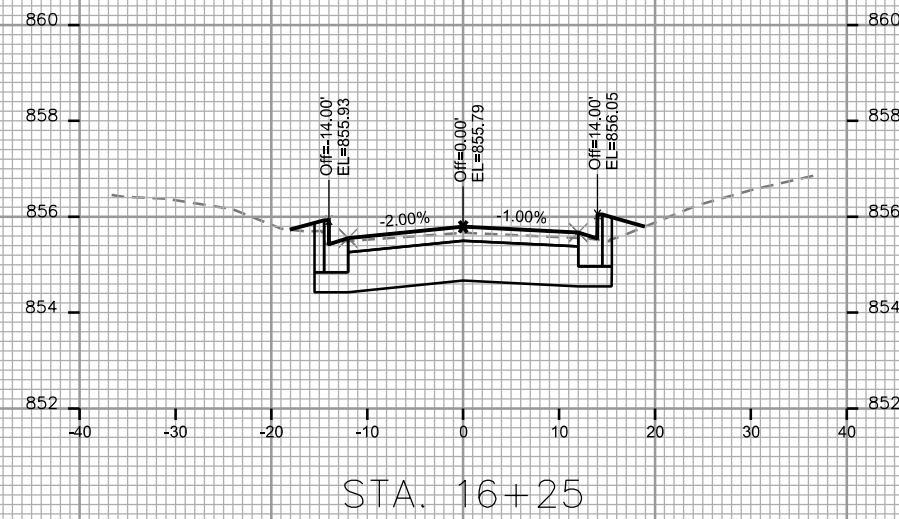
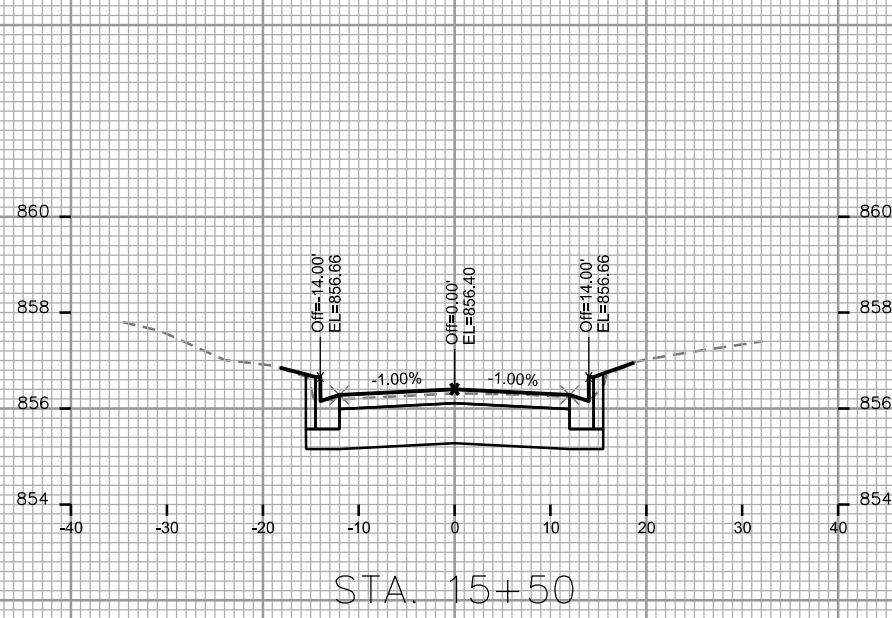
REV. DATE: _____

ORIGINATOR: CITY OF MADISON, STREETS DIVISION

CROSS SECTIONS

POTTER STREET

CITY OF MADISON



PLOT SCALE: _____

PLOT NAME: _____

REV. DATE: _____

ORIGINATOR: CITY OF MADISON - STREETS DIVISION

CROSS SECTIONS

POTTER STREET

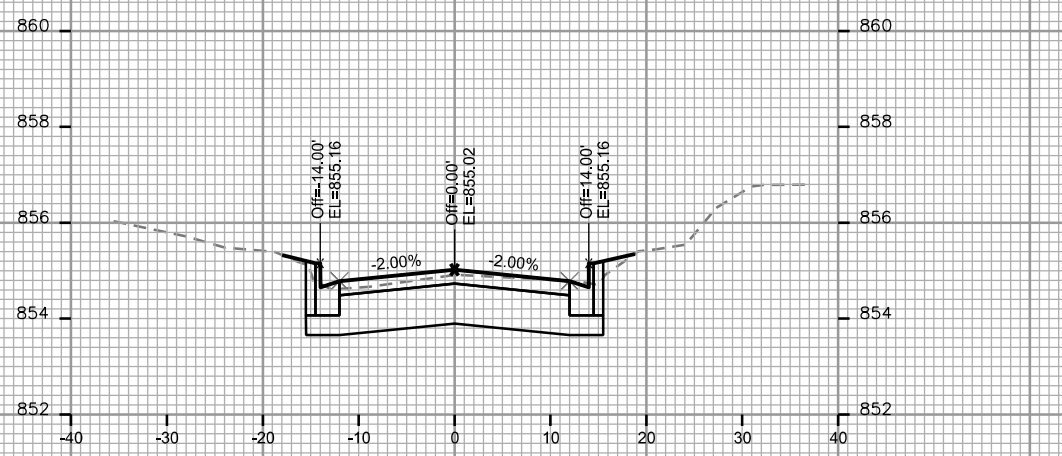
CITY OF MADISON

PLOT SCALE: _____

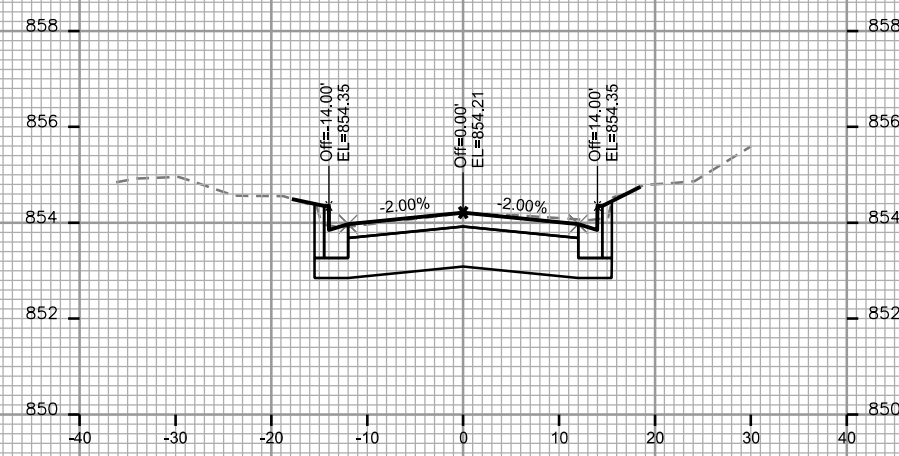
PLOT NAME: _____

REV. DATE: _____

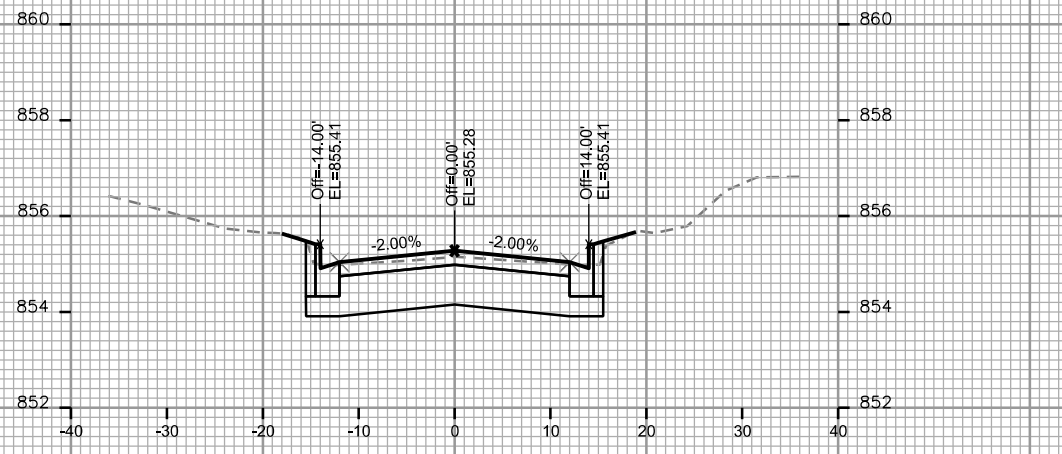
ORIGINATOR: CITY OF MADISON, STREETS DIVISION



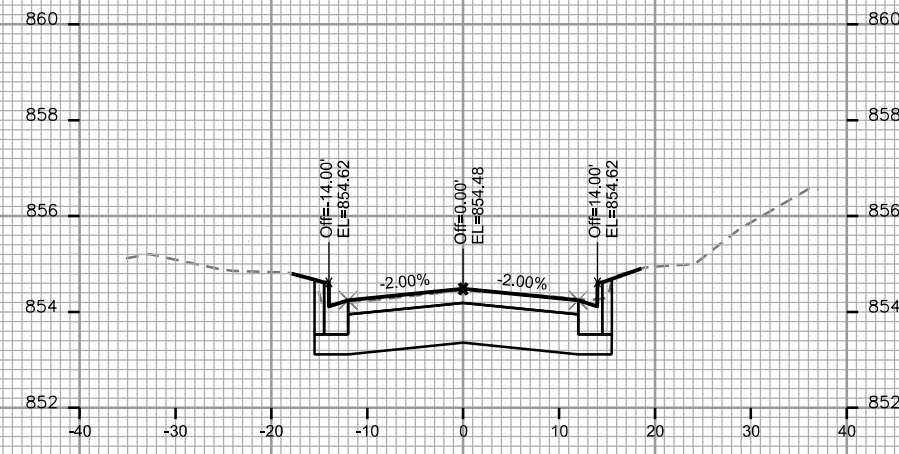
STA. 17+00



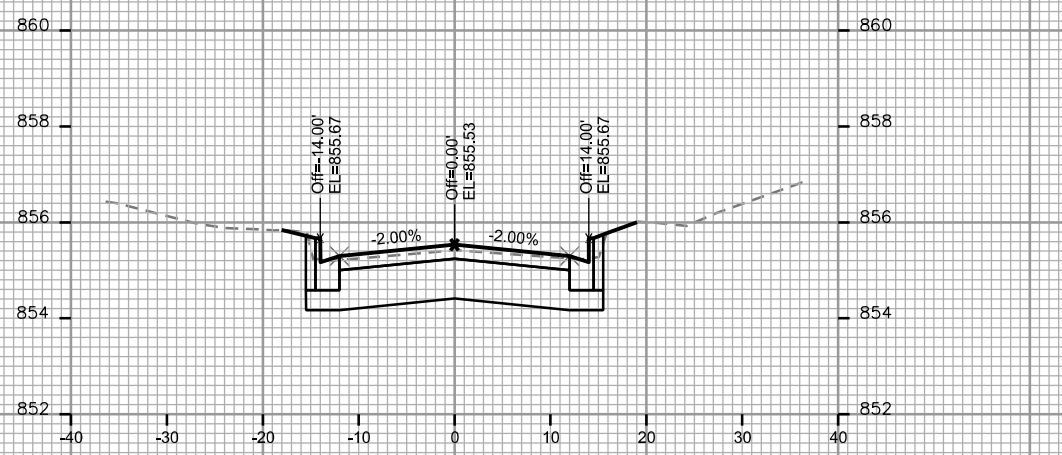
STA. 17+75



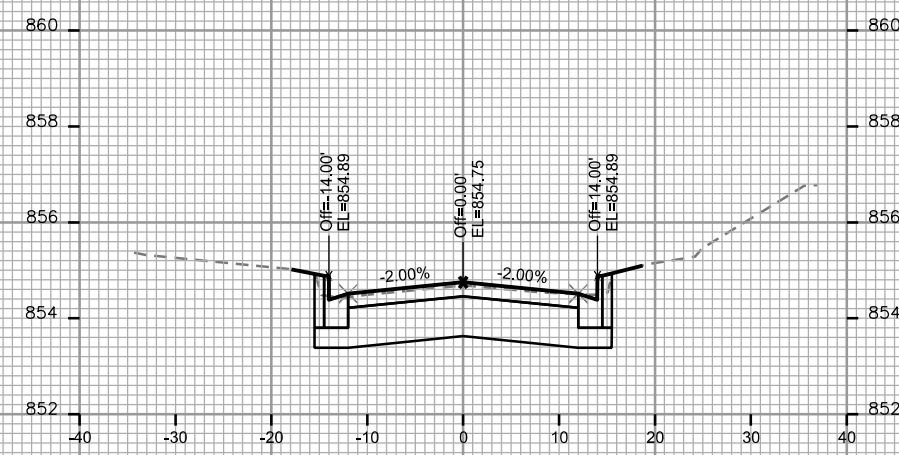
STA. 16+75



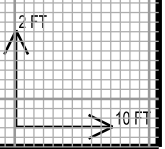
STA. 17+50



STA. 16+50



STA. 17+25



CROSS SECTIONS

POTTER STREET

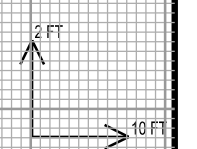
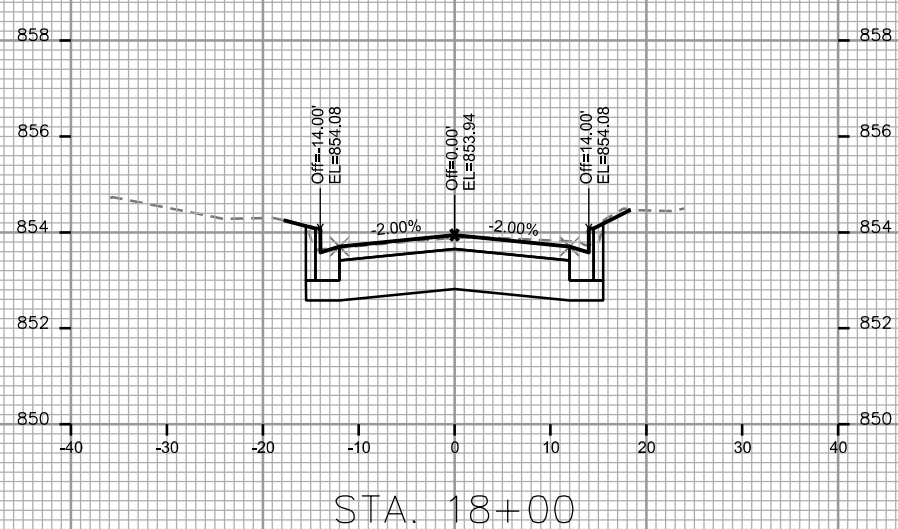
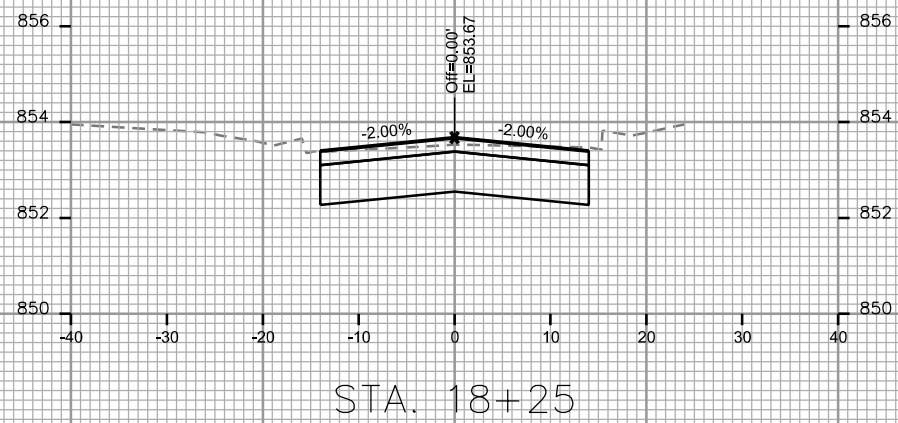
CITY OF MADISON

PLOT SCALE: _____

PLOT NAME: _____

REV. DATE: _____

ORIGINATOR: CITY OF MADISON, STREETS DIVISION



0709-261-0502-8
ASPLUND, TIMOTHY R
& BARBARA SHANNON PIETZ
340 POTTER STREET

24" TREE TO BE
REMOVED

PROPOSED SANIATRY LATERAL

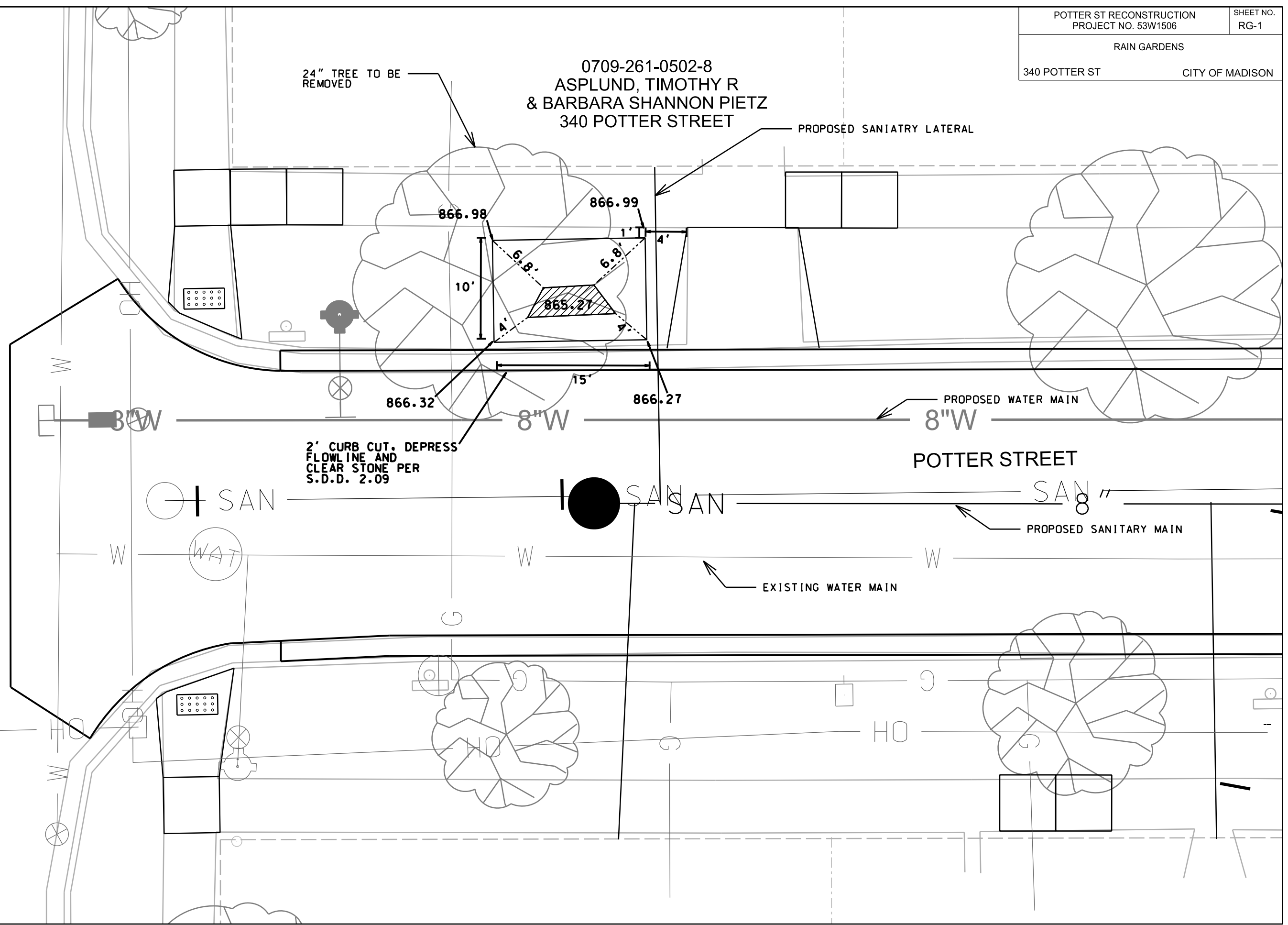
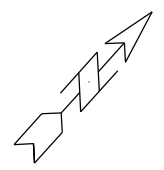
PROPOSED WATER MAIN

POTTER STREET

PROPOSED SANITARY MAIN

EXISTING WATER MAIN

2' CURB CUT. DEPRESS
FLOWLINE AND
CLEAR STONE PER
S.D.D. 2.09



ROWELL STREET

PLOT SCALE: _____

PLOT NAME: _____

REV. DATE: _____

ORIGINATOR: CITY OF MADISON, STREETS DIVISION

SCALE:
1"=10'