



Department of Public Works
Engineering Division
Robert F. Phillips, P.E., City Engineer

City-County Building, Room 115
210 Martin Luther King, Jr. Boulevard
Madison, Wisconsin 53703
Phone: (608) 266-4751
Fax: (608) 264-9275
engineering@cityofmadison.com
www.cityofmadison.com/engineering

Deputy City Engineer

Gregory T. Fries, P.E.

Deputy Division Manager

Kathleen M. Cryan

Principal Engineer 2

Christopher J. Petykowski, P.E.
John S. Fahrney, P.E.

Principal Engineer 1

Christina M. Bachmann, P.E.
Mark D. Moder, P.E.
Janet Schmidt, P.E.
Jim Wolfe, P.E.

Facilities & Sustainability

Bryan Cooper, Principal Architect

Mapping Section Manager

Eric T. Pederson, P.S.

Financial Manager

Steven B. Danner-Rivers

April 27, 2021

NOTICE OF ADDENDUM
ADDENDUM NO. 1
CONTRACT NO. 7838

E. DEAN AVENUE, ALLIS AVENUE, SETH CIRCLE AND TYLER CIRCLE ASSESSMENT DISTRICT
- 2021

Revise and amend the contract document(s) for the above project as stated in this addendum, otherwise, the original document shall remain in effect.

PLANS:

Remove and insert revised plan sheets as noted below.

Sheets U10-U11: Updated plan notes to clarify tree removals in TLE areas.

Please acknowledge this addendum on page E1 of the contract documents and/or in Section E: Bidder's Acknowledgement on Bid Express.

Electronic version of these documents can be found on the Bid Express web site at:

<http://www.bidexpress.com>

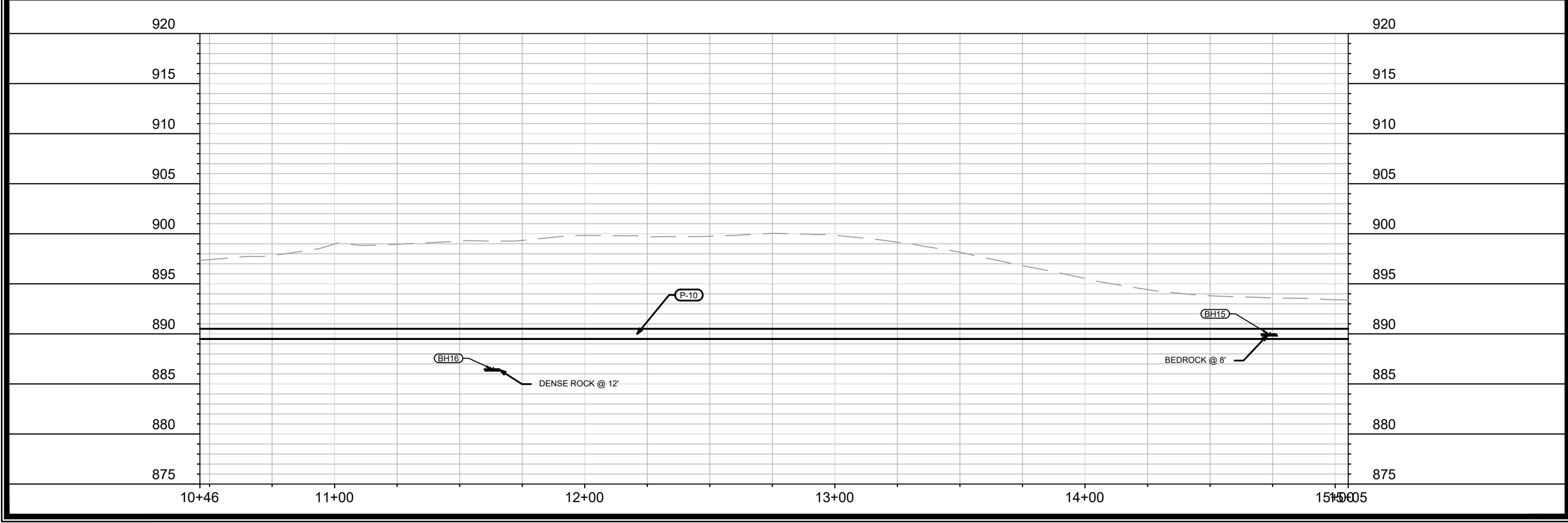
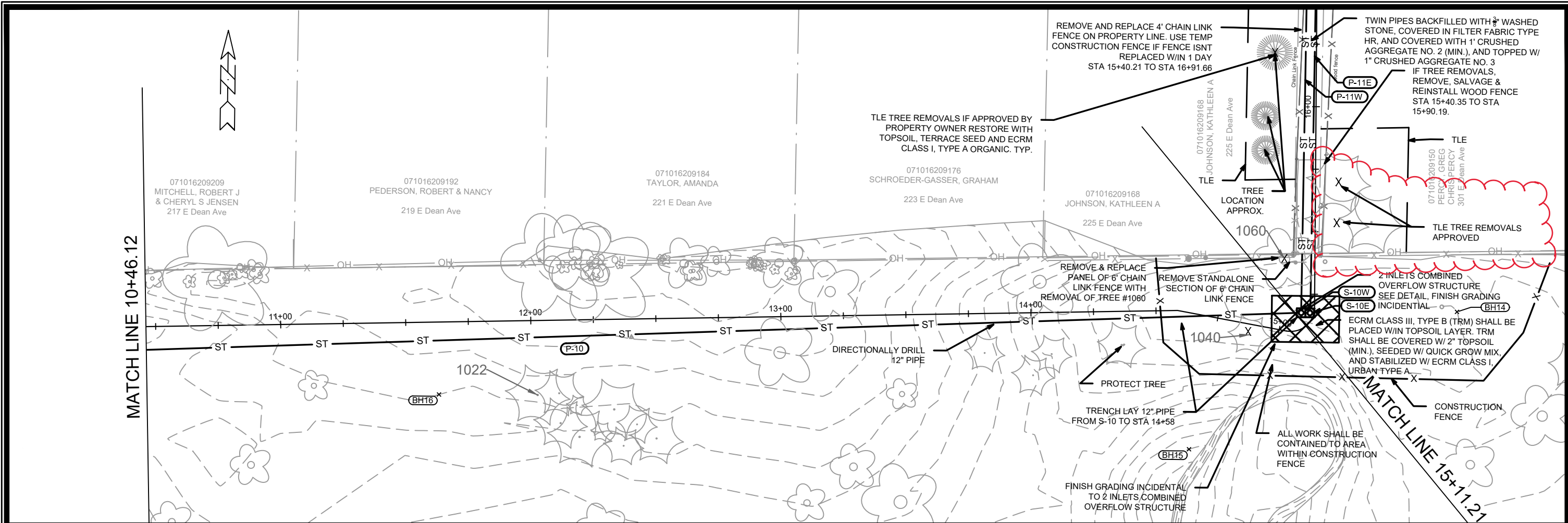
If you are unable to download plan revisions associated with the addendum, please contact the Engineering office at 608-266-4751 receive the material by another route.

Sincerely,

on behalf of

Robert F. Phillips, P.E.
City Engineer

RFP:JMW



DATE	BY	U-10
4/26/21	JEO	
REVISION		
DATE	BY	
4/26/21	JEO	
REVISION		
DATE	BY	
4/26/2021	5:07 PM	
DESIGNED BY: ###	Scale: #####	
11432		

11432

UTILITY PLAN & PROFILE - MONONA GOLF COURSE STORM SEWER

E. DEAN AVE., ALLIS AVE., SETH CIR. & TYLER CIR. RECONSTRUCT 2021

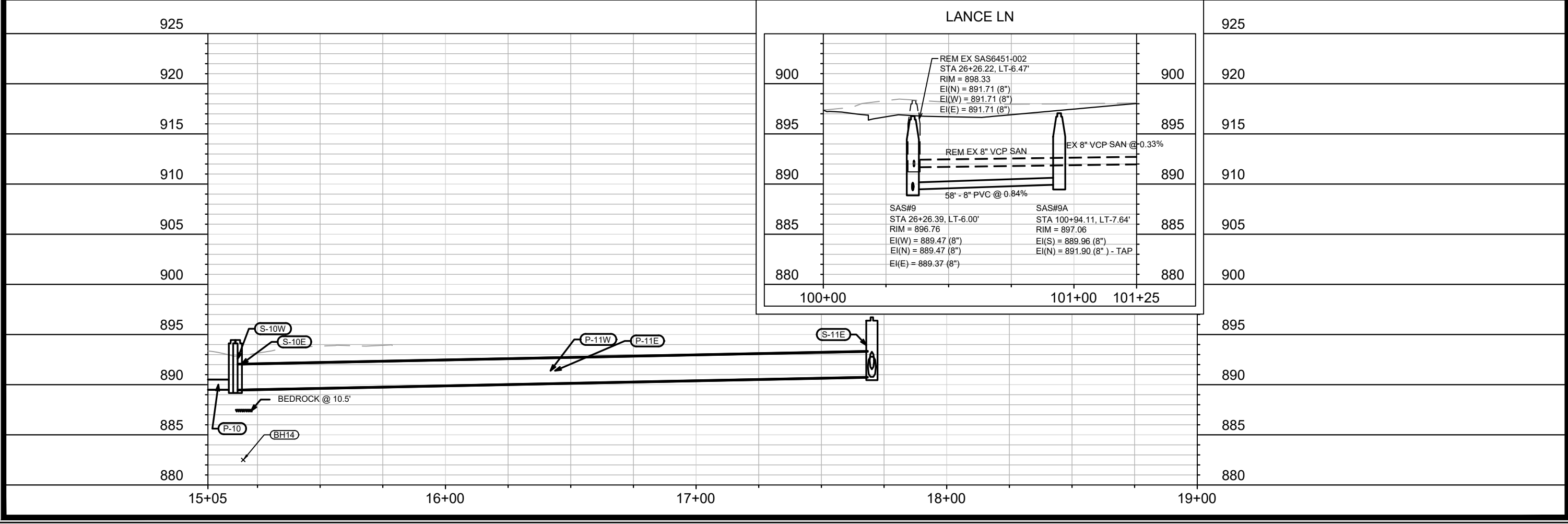
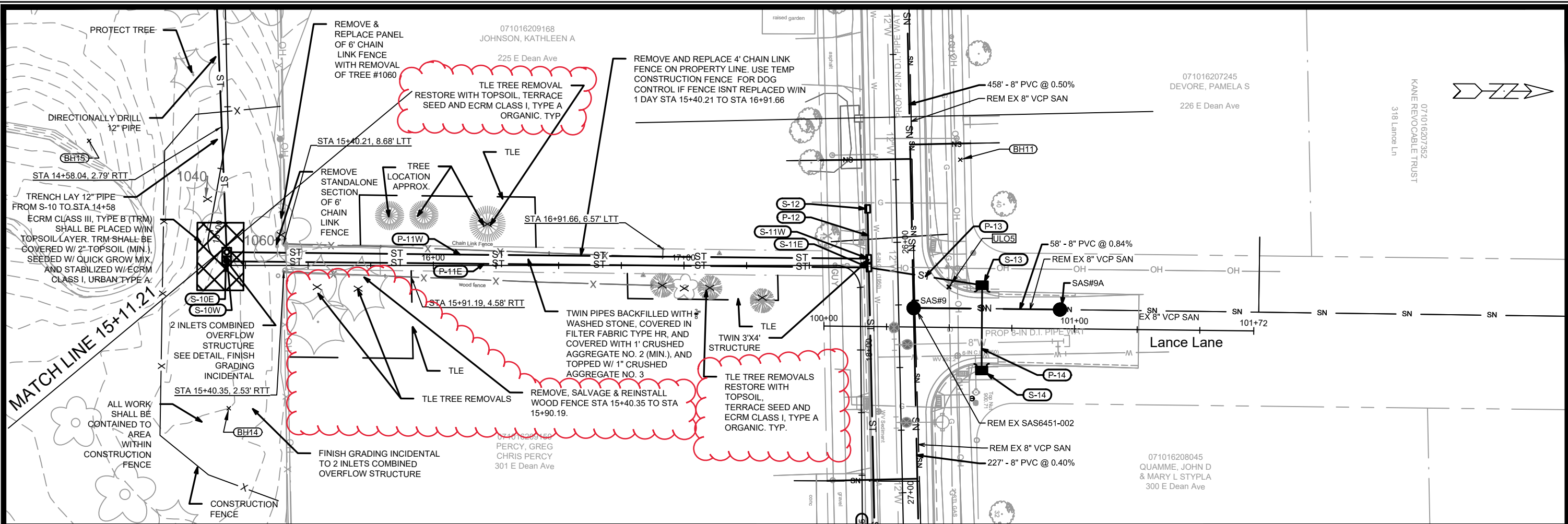
MADISON, WI

CONTRACT NO: 7838

M:\DESIGN\Projects\11432\C3D\Storm\11432_SEWER PnP LAYOUT.dwg

11432

U-10



DATE	4-26-21	BY	JEO
REVISION			
DESIGNED BY	###	DATE	4/26/2021 5:16 PM
SCALE	#####		
PROJECT NO.	11432		
CONTRACT NO.	7838		
U-11			

11432
 UTILITY PLAN & PROFILE - MONONA GOLF COURSE STORM SEWER
 E. DEAN AVE., ALLIS AVE., SETH CIR. & TYLER CIR. RECONSTRUCT 2021
 MADISON, WI
 CONTRACT NO: 7838
 M:\DESIGN\Projects\11432\CSD\Storm\11432_SEWER PnP LAYOUT_B.dwg

11432
 U-11