

NOTICE OF ADDENDUM

ADDENDUM 2

Streets West Facility HVAC and Lighting Upgrade

CONTRACT NO. 9497

Revise and amend the contract document(s) for the above project as stated in this addendum, otherwise, the original document shall remain in effect.

Please acknowledge this addendum on page E1 of the contract documents and/or in Section E: Bidder's Acknowledgement on Bid Express.

Electronic version of these documents can be found on the Bid Express web site at:

<http://www.bidexpress.com>

If you are unable to download plan revisions associated with the addendum, please contact the Engineering office at 608-266-4751 receive the material by another route.

A. Answers to questions:

1. Question: "Can equipment or trucks be relocated to gain access to work locations?"
 - a. Answer: Vehicles can be temporarily relocated by owner to make bays available for contractor. Miscellaneous material, pallets etc. also can be relocated by owner. Permanently installed shelves, work benches and cabinets can't be relocated in most cases. Contractor will need to find an access with boom lifts, cherry pickers, or other safe means.
2. Question: "There are existing sprinklers above the new supply duct. Who will install new sprinklers under the duct?"
 - a. Answer: Sheet G 01 will be re-issued
 - i. The City will hire a fire sprinkler contractor under a separate contract.
3. Question: "There are sprinkler pipe, gas pipe and radiant heater hangers that may be in the way of the new supply duct. Who will relocate those?"
 - a. Answer: Sheet M 200 will be re-issued.
 - i. Contractor shall adjust duct route and elevation to avoid sprinkler pipe, gas pipe and equipment as needed. Use rectangular or oval duct as needed while maintaining same equivalent diameter.
 - ii. Where existing gas pipe or radiant heater hangers are in the way, remove supports and provide new support from building structure or from new duct support.
 - iii. Duct shall be above Overhead Door height. The air flow and diffuser location shall be as intended in the original design.
4. Question: "Who is a local controls contractor?"
 - a. Answer: All our existing system were installed by:
 - i. Marquis Harding
 - ii. South Town Refrigeration dba ControlWorks Inc.
 - iii. (608) 347-6108
 - iv. MHarding@controlworks-bas.com
 - b. Additional Note: Review Section 23 09 00 1.4. for qualification requirements. Controls contractor shall cooperate with owner IT department to gain access to network and BAS.

March 18, 2024

Page 2

This will require providing IT department with information about company, software, hardware and other information.

5. Question: "Can we bid only the alternate or only one discipline?"

- a. Answer: The bidder needs to submit a bid for the complete work for the base bid and for the alternate. If a contractor wishes to only perform part of the work, they should work with a company that acts as general contractor.

B. Plan Revisions:

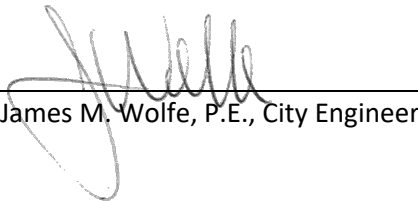
1. Replace sheet G 01 with new sheet G 01

- a. Added fire sprinkler work to owner-provided part of work. See E.2.

2. Replace sheet M 200 with new sheet M 200

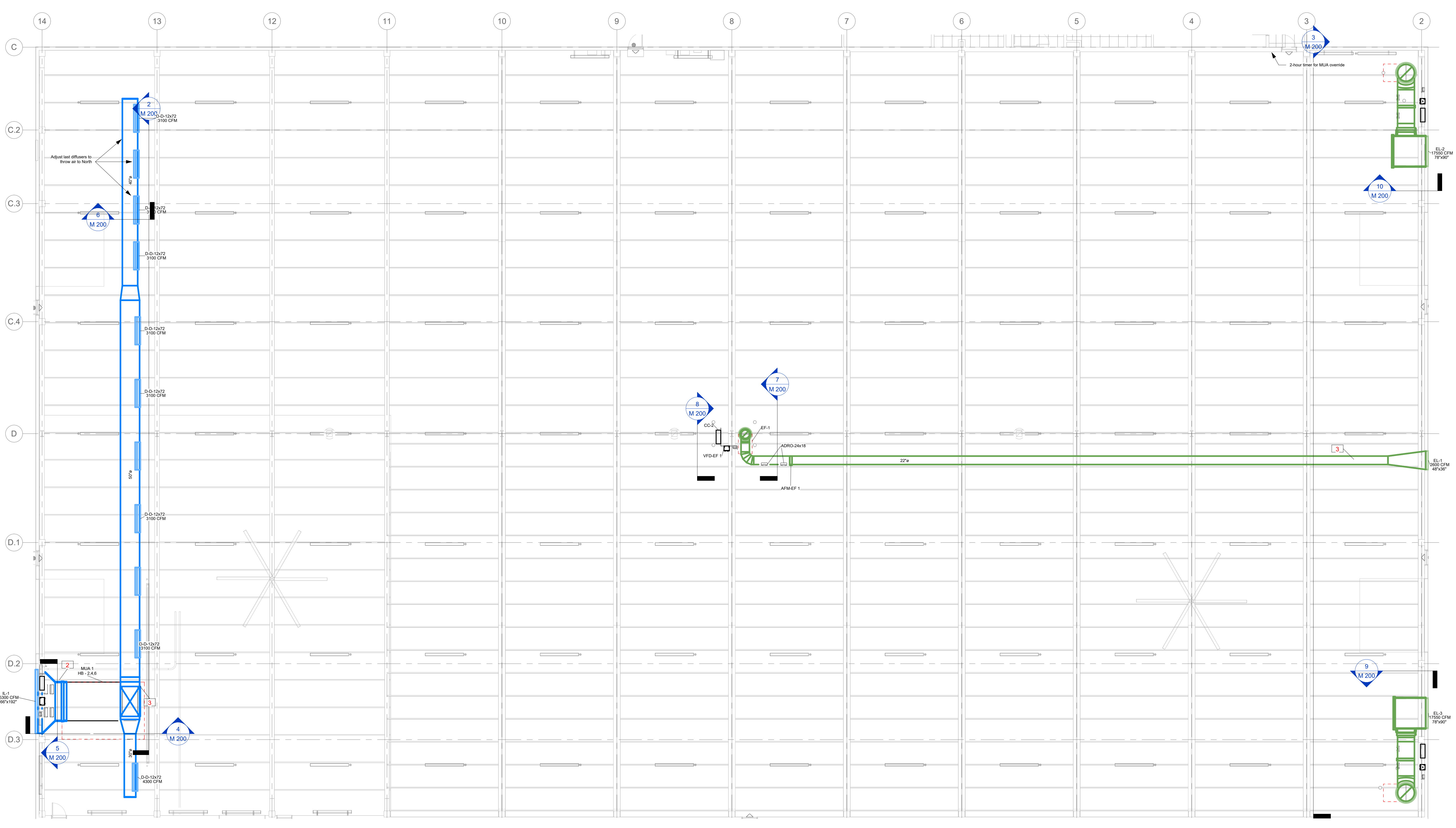
- a. Answer above question about potential conflict between new supply duct and existing hangers, pipes and equipment.

Sincerely,

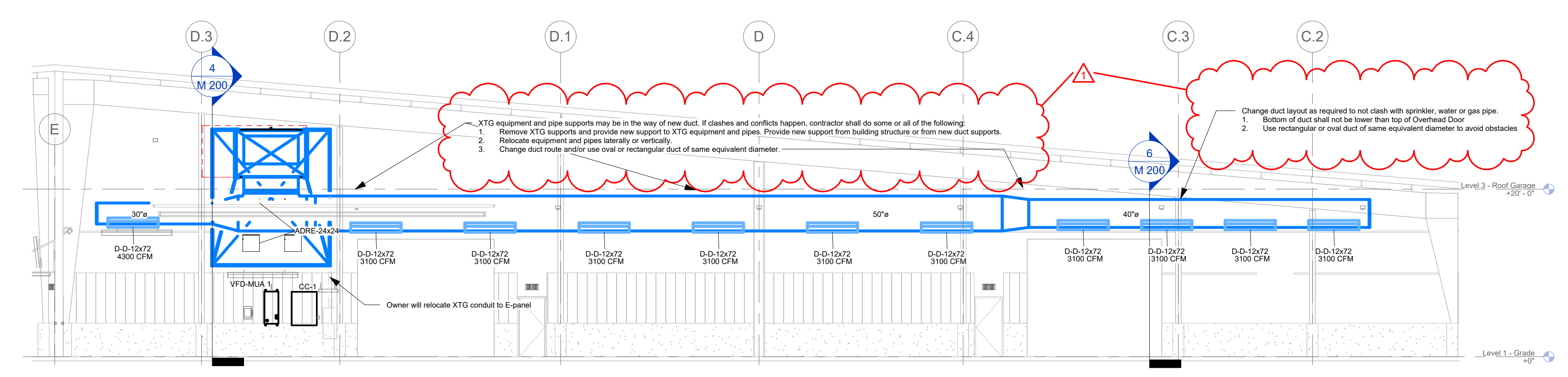


James M. Wolfe, P.E., City Engineer

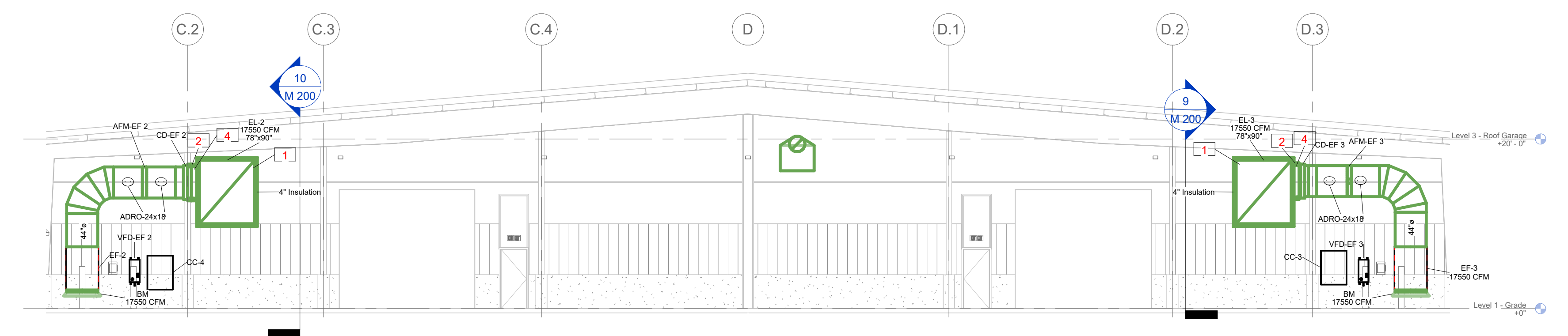
JMW:ks



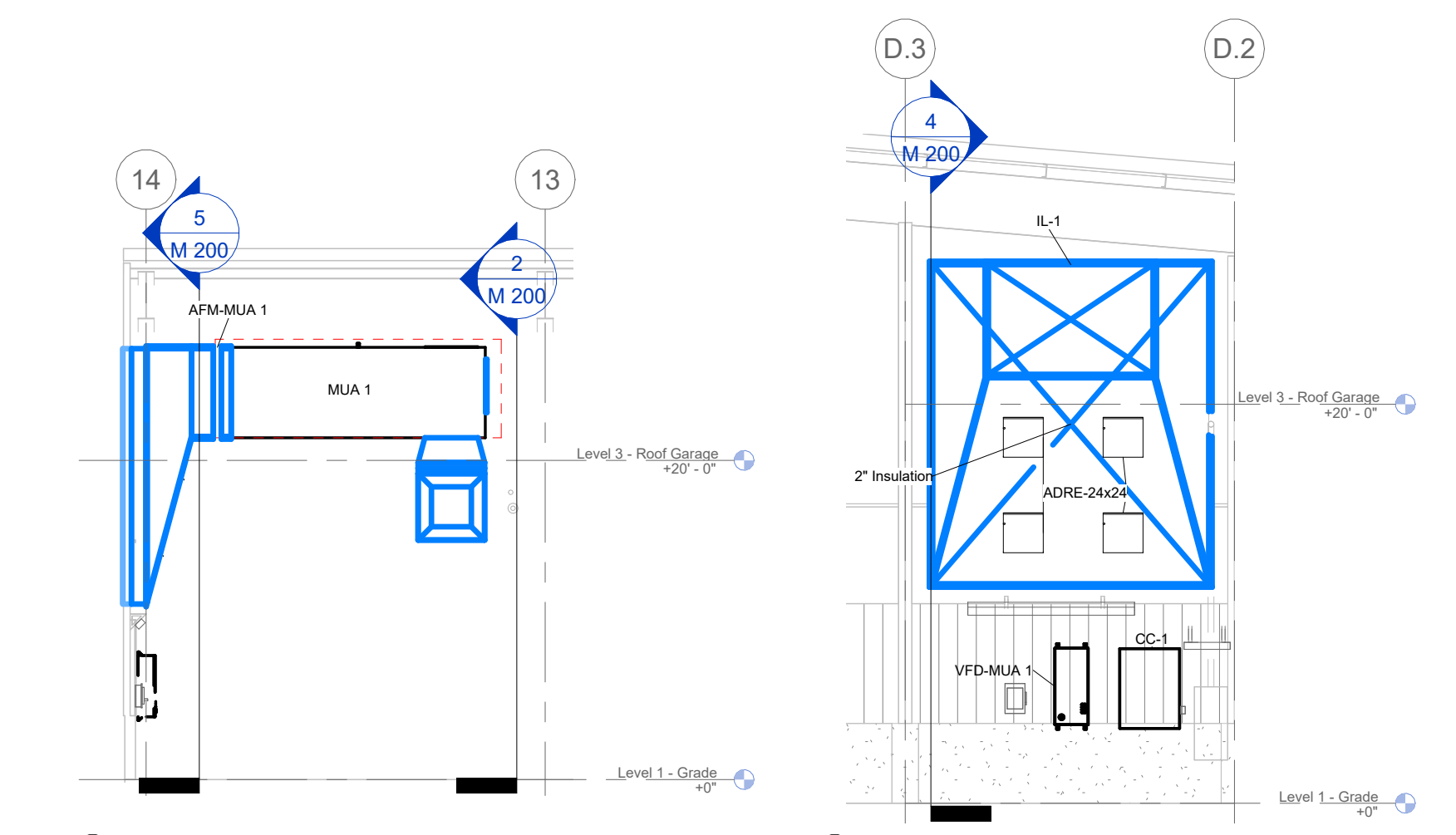
1 M Ceiling - Level 1 - Garage 1" = 10'-0"



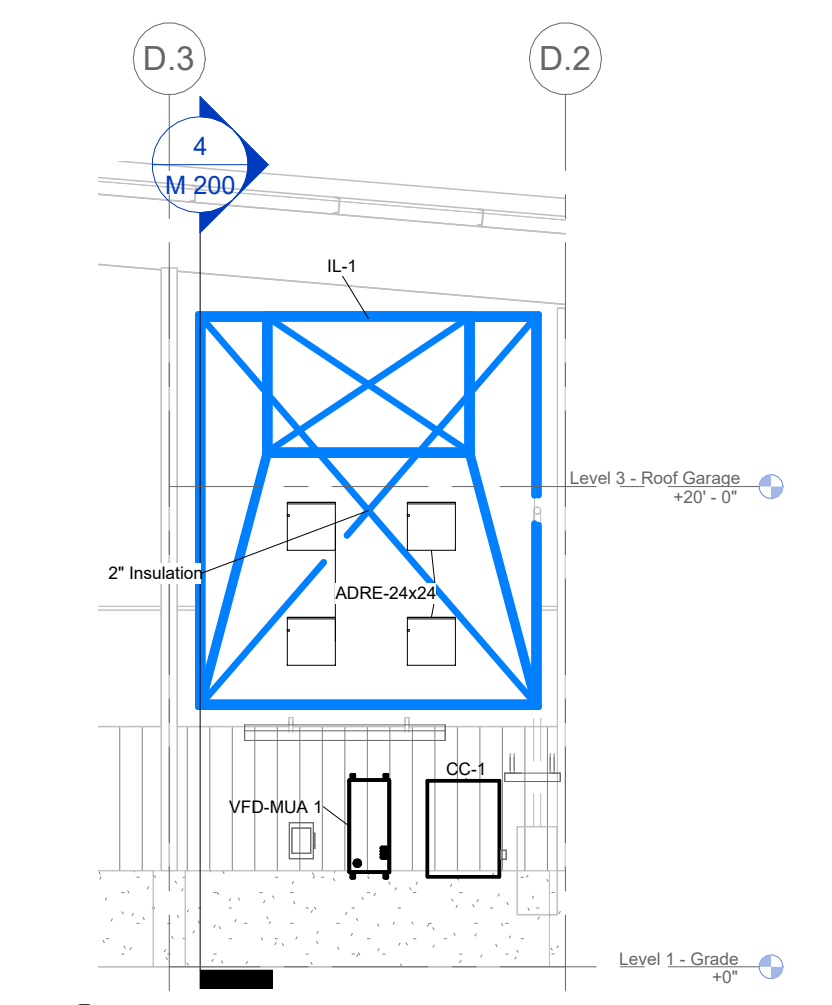
2 M Section - MUA 1 Discharge 1" = 10'-0" - M 200



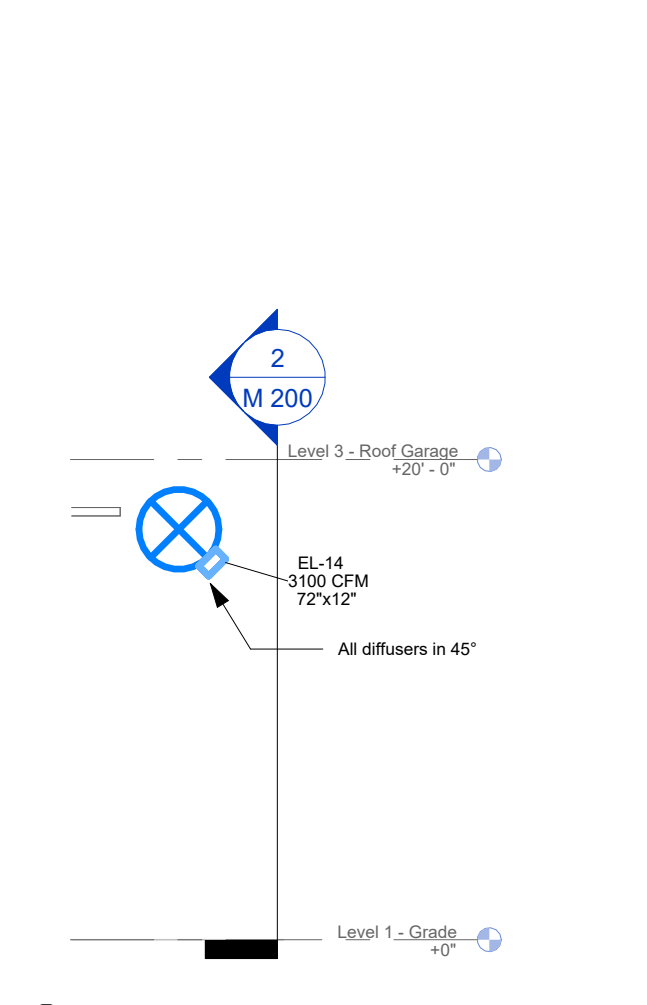
3 M Section - East Wall 1" = 10'-0" - M 200



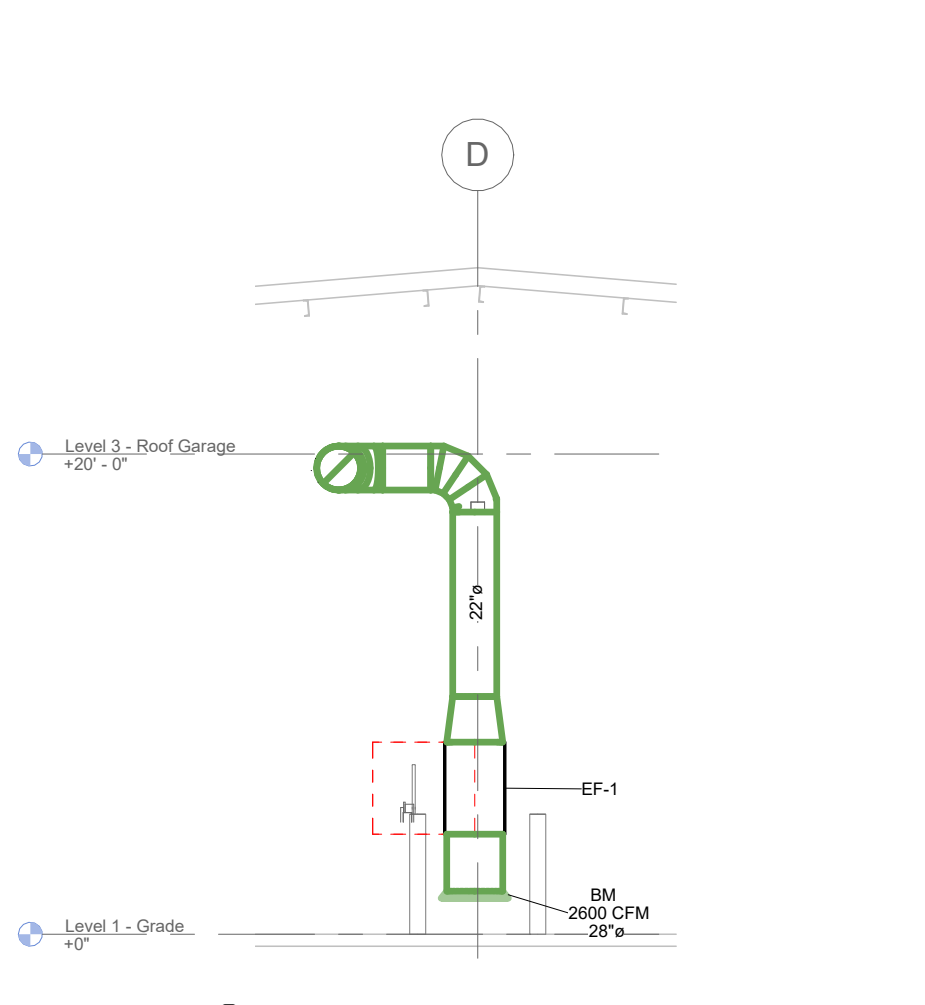
4 M Section - MUA 1 1" = 10'-0" - M 200



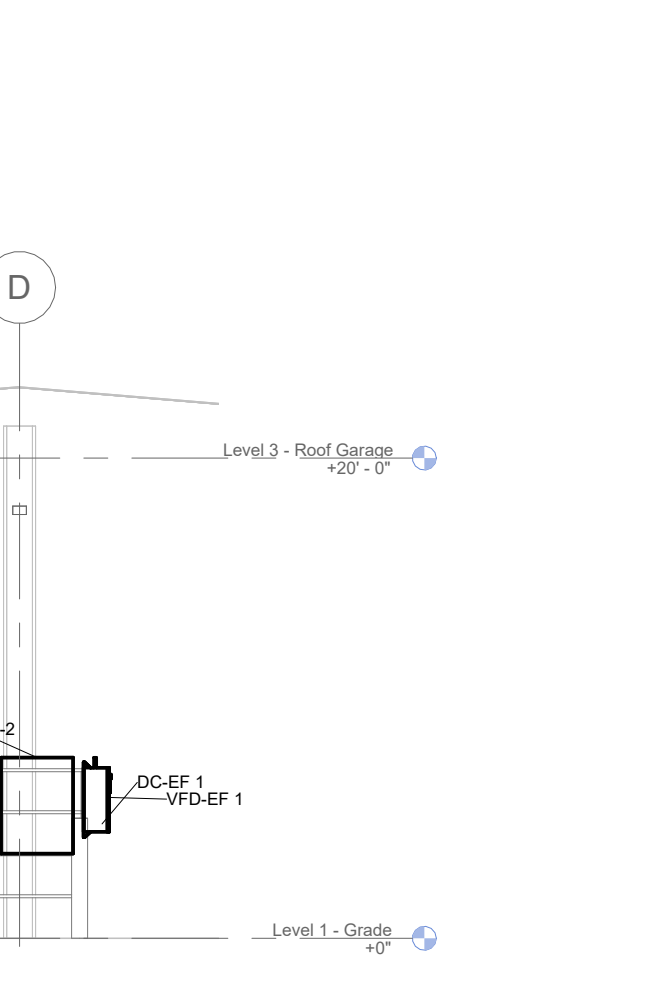
5 M Section - IL-1 1/8" = 1'-0" - M 200



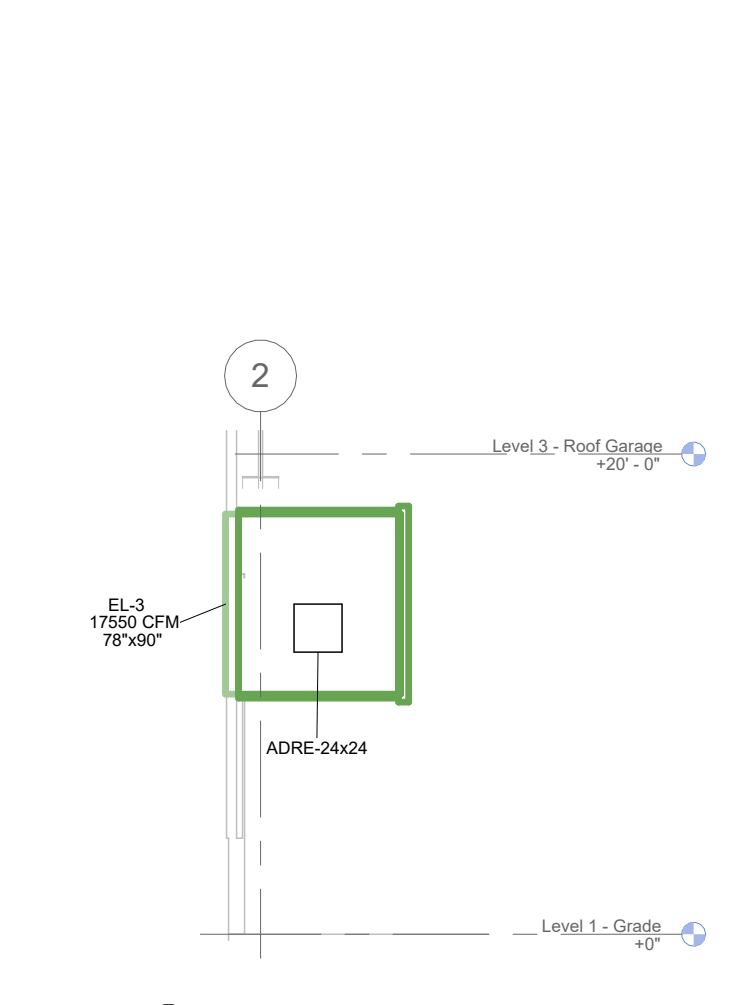
6 M Section - Supply Duct 1/8" = 1'-0" - M 200



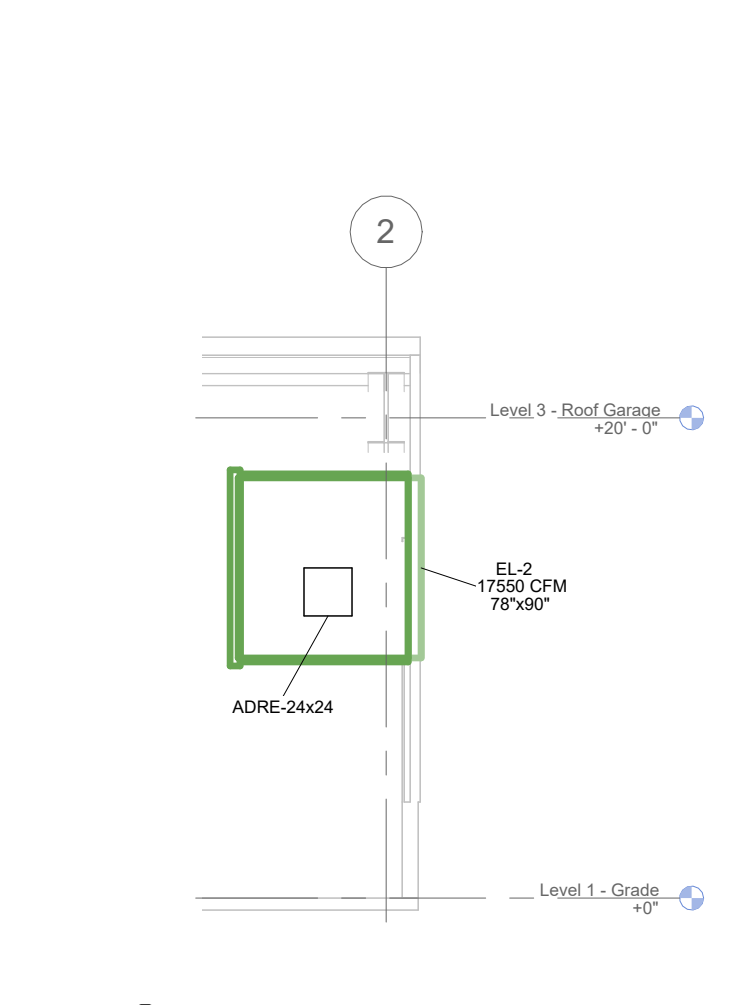
7 M Section - Minimum EA Intake 1/8" = 1'-0" - M 200



8 EL Section - EF 1 Controls 1/8" = 1'-0" - M 200

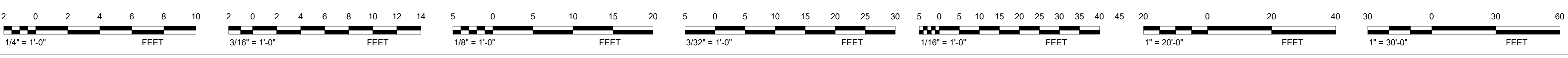


9 M Section - EL 3 1/8" = 1'-0" - M 200



10 M Section - EL 2 1/8" = 1'-0" - M 200

Keynote Legend	
Key Value	Keynote Text
1	Schedule opening shall be 10' away from openings and 10' above grade. Create stable plenum w/ insulation and access doors.
2	Revised by AECAT PyControl Designer.
3	Not feasible region.
4	Butt-welded Potential Fitting into Plenum. Plenum in lower size.



Revisions	
No.	Description
1	Revisions Appendix 2