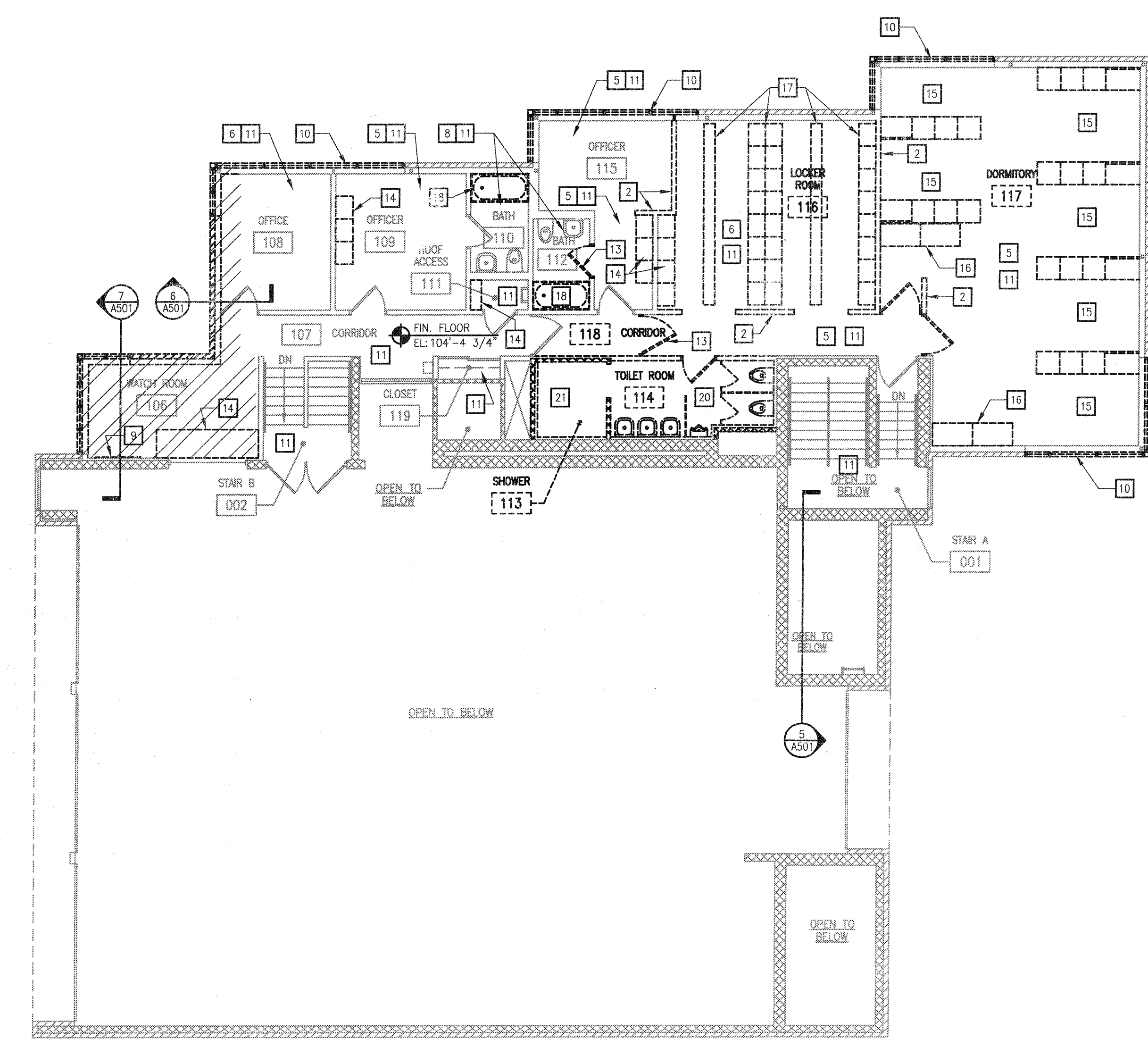
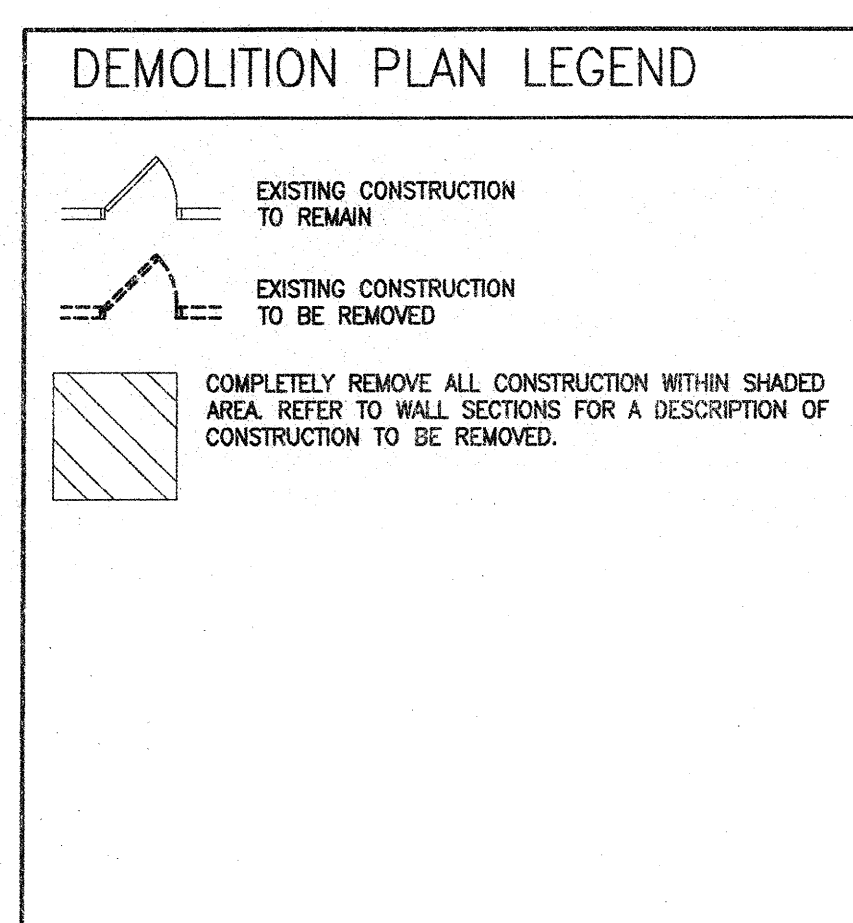


1 LOWER LEVEL DEMOLITION PLAN
SCALE: 1/8" = 1'-0"



2 UPPER LEVEL DEMOLITION PLAN
SCALE: 1/8" = 1'-0"

- GENERAL DEMOLITION PLAN NOTES**
- EXISTING CONSTRUCTION TO REMAIN IS SHOWN WITH LIGHT SCREENED LINES. CONSTRUCTION TO BE REMOVED IS SHOWN WITH DARK DASHED LINES.
 - REFER TO FLOOR PLANS FOR DIMENSIONS AND OTHER INFORMATION THAT IS PERTINENT TO DETERMINING THE EXTENT OF DEMOLITION.
 - EXAMINE OTHER PROJECT DRAWINGS AND FIELD VERIFY EXISTING CONDITIONS TO DETERMINE ADDITIONAL DEMOLITION WORK THAT MAY NOT BE INDICATED ON ARCHITECTURAL DEMOLITION PLANS.
 - REFER TO SPECIFICATIONS FOR INSTRUCTIONS REGARDING RECYCLING OF SPECIFIC MATERIALS AND EQUIPMENT.
 - SEAL OFF ALL AREAS WHERE DEMOLITION OCCURS TO PREVENT DUST AND DEBRIS FROM ENTERING ADJACENT AREAS OF THE BUILDING.
 - PRIOR TO BEGINNING REMOVAL, VERIFY THAT PLUMBING, HVAC AND ELECTRICAL SERVICES HAVE BEEN RENDERED SAFE FOR REMOVAL.
 - PROMPTLY REMOVE DEBRIS TO AVOID IMPOSING EXCESSIVE LOADS ON WALLS AND FLOORS.
 - SEE STRUCTURAL DRAWINGS FOR DETAILS ON THE REMOVAL OF BUILDING STRUCTURAL COMPONENTS. DO NOT ALTER STRUCTURAL COMPONENTS WITHOUT SPECIFIC DIRECTION FROM ARCHITECTURAL AND/OR STRUCTURAL DRAWINGS.
 - RESTORE ALL SURFACES THAT ARE SCHEDULED TO REMAIN IF DAMAGED AS A RESULT OF DEMOLITION.
 - REMOVE EXISTING CONSTRUCTION COMPLETELY IF DEMOLITION IS INDICATED, INCLUDING ALL ACCESSORY COMPONENTS SUCH AS HANDERS, FASTENERS, ETC.
 - REMOVE INCIDENTAL MATERIALS SUCH AS EXPOSED NAILS AND SCREWS, OLD ADHESIVE, ETC. FROM ALL SURFACES THAT ARE TO REMAIN.
 - WHERE FLOOR FINISHES ARE SHOWN TO BE REMOVED, PREPARE THE CONCRETE FLOOR TO RECEIVE THE NEW FINISH.
 - WHERE MATERIALS AND EQUIPMENT ARE SHOWN TO BE SALVAGED FOR RE-USE, CAREFULLY REMOVE THE ITEMS WITHOUT DAMAGE AND STORE THEM IN A PROTECTED LOCATION.
 - WHERE PORTIONS OF EXISTING CEILINGS ARE REMOVED TO FACILITATE OTHER WORK, MATERIALS SHALL BE SALVAGED AND REPLACED TO MATCH EXISTING.
 - AN INSPECTION FOR HAZARDOUS MATERIAL HAS BEEN PERFORMED ON THIS BUILDING. REFER TO SPECIFICATIONS SECTION 01 10 00 - SUMMARY OF WORK FOR INFORMATION THAT AFFECTS THE WORK OF THIS PROJECT.



- DEMOLITION PLAN SPECIFIC NOTES**
- SOME OF THE NOTES BELOW MAY NOT BE USED ON EVERY DEMO PLAN.
- SAWCUT AND REMOVE PORTION OF EXISTING CONCRETE SLAB ON GRADE AS REQUIRED FOR INSTALLATION OF BELOW-GROUND WORK. REFER TO PLUMBING DRAWINGS FOR ADDITIONAL INFORMATION.
 - REMOVE STUD AND DRYWALL PARTITION TO THE EXTENT SHOWN, INCLUDING BASE, TRIM, WALL FINISH, AND ACCESSORIES.
 - REMOVE CONCRETE MASONRY PARTITION TO THE EXTENT SHOWN, INCLUDING BASE, TRIM, WALL FINISH, AND ACCESSORIES.
 - REMOVE GYPSUM DRYWALL AND FURRING FROM MASONRY OR CONCRETE WALL. MASONRY AND CONCRETE TO REMAIN.
 - REMOVE CARPETING AND BASE FROM THE ENTIRE ROOM. PREPARE FLOOR TO RECEIVE NEW FINISH.
 - REMOVE SHEET VINYL FLOORING AND RESILIENT BASE FROM THE ENTIRE ROOM. PREPARE FLOOR TO RECEIVE NEW FINISH.
 - VINYL COMPOSITION TILE FLOORING AND RESILIENT BASE WILL BE REMOVED FROM THIS ROOM BY THE HAZARDOUS MATERIALS ABATEMENT CONTRACTOR PRIOR TO START OF CONSTRUCTION.
 - REMOVE CERAMIC TILE FLOOR AND BASE FROM THE ENTIRE ROOM. REMOVE FLOOR-TO-CEILING CERAMIC TILE FROM ALL WALLS. PREPARE FLOOR AND WALLS TO RECEIVE NEW FINISH.
 - REMOVE TACK BOARD OR MARKER BOARD AND DISPOSE OF. PATCH WALL THAT REMAINS.
 - REMOVE EXISTING ALUMINUM WINDOWS FROM THE EXTERIOR WALL, INCLUDING THE SILL AND WOOD CASING. PREPARE OPENING TO RECEIVE REPLACEMENT WINDOWS, SILL, & CASING. REMOVE MINI-BLINDS FROM WINDOW OPENING AND SALVAGE FOR RE-USE.
 - REMOVE SUSPENDED ACoustICAL CEILING SYSTEM FROM THE ENTIRE ROOM, INCLUDING HANGERS AND ACCESSORIES. GYPSUM BOARD SOFFITS AND BULKHEADS ARE TO REMAIN.
 - REMOVE PORTION OF EXISTING STEEL LADDER. SEE SECTION 5/AS01 FOR ADDITIONAL INFORMATION.
 - REMOVE DOOR, FRAME, AND HARDWARE.
 - REMOVE CABINETRY. PREPARE FLOOR, WALLS, AND/OR CEILING TO RECEIVE NEW FINISH.
 - REMOVE EXISTING SLEEPING CUBICLES AND STORE ON SITE DURING CONSTRUCTION FOR FUTURE USE.
 - REMOVE EXISTING LINEN CABINETS AND STORE ON SITE DURING CONSTRUCTION FOR FUTURE USE.
 - REMOVE METAL LOCKERS AND BENCHES. PREPARE FLOOR, WALLS, AND/OR CEILING TO RECEIVE NEW FINISH.
 - REMOVE GYPSUM DRYWALL FROM WALLS OF BATHTUB ALCOVE.
 - REMOVE QUARRY TILE FLOOR AND BASE FROM ENTIRE ROOM. PREPARE CONC. FLOOR SLAB TO RECEIVE NEW FINISH.
 - FROM ENTIRE ROOM: REMOVE CERAMIC TILE FLOOR FINISH AND PREPARE CONCRETE SURFACE TO RECEIVE NEW FINISH. REMOVE STUD AND DRYWALL PARTITIONS, REMOVE CMU CHASE WALLS, REMOVE CERAMIC TILE FROM SOUTH WALL (CMU TO REMAIN), REMOVE TOILET PARTITIONS AND ACCESSORIES, & REMOVE SUSPENDED ACoustICAL CEILING. SALVAGE TOILET ACCESSORIES FOR RE-USE.
 - FROM ENTIRE ROOM: REMOVE CERAMIC TILE FLOOR FINISH AND SLOPED CONCRETE TOPPING FROM PRECAST CONCRETE PLANK. REMOVE CMU WALLS TO THE EXTENT SHOWN. REMOVE CERAMIC TILE FROM SOUTH WALL (CMU TO REMAIN), AND REMOVE SUSPENDED PLASTER CEILING.
 - REMOVE METAL RACK FOR STORAGE OF OXYGEN TANKS AND SALVAGE FOR RE-USE.
 - REMOVE QUARRY TILE FLOOR AND BASE FROM ENTIRE ROOM. PREPARE CONCRETE SLAB TO RECEIVE NEW FINISH.

DRAWING SET	OWNER REVIEW
COPYRIGHT	2012
STRANG, INC.	
FILE NAME	2011009-A101.DWG
REVISIONS	
DRAWN	DV
CHECKED	LB
DATE	03-09-12
PROJECT NO.	2011009
PROJECT TITLE	

CITY OF MADISON
FIRE STATION #2
ADDITION AND
REMODELING

421 GRAND CANYON DRIVE
MADISON, WISCONSIN

SHEET TITLE
DEMOLITION PLANS

SHEET NO.
A101