

BID OF \_\_\_\_\_

**PROPOSAL, CONTRACT, BOND AND SPECIFICATIONS**

**FOR**

**SOUTH INGERSOLL STREET & RUTLEDGE STREET ASSESSMENT DISTRICT –  
2012**

**CONTRACT NO. 6803**

**IN**

**MADISON, DANE COUNTY, WISCONSIN**

AWARDED BY THE COMMON COUNCIL  
MADISON, WISCONSIN ON \_\_\_\_\_

**PLEASE RETURN PLANS AND SPECIFICATIONS TO:**

**CITY ENGINEERING DIVISION  
1600 EMIL STREET  
MADISON, WISCONSIN 53713**

[www.cityofmadison.com/business/pw](http://www.cityofmadison.com/business/pw)


**SOUTH INGERSOLL STREET & RUTLEDGE STREET ASSESSMENT DISTRICT –  
2012  
CONTRACT NO. 6803**

**INDEX**

SECTION A: ADVERTISEMENT FOR BIDS .....	A-1
SECTION B: INSTRUCTIONS TO BIDDERS .....	B-1
SECTION C: SBE .....	C-1
SECTION D: SPECIAL PROVISIONS .....	D-1
SECTION E: PROPOSAL .....	E-1
SECTION F: BID BOND .....	F-1
SECTION G: AGREEMENT .....	G-1
SECTION H: PAYMENT AND PERFORMANCE BOND .....	H-1
SECTION I: PREVAILING WAGE RATE .....	I-1

This Proposal, and Agreement have  
been prepared by:

**CITY ENGINEERING DIVISION  
CITY OF MADISON  
MADISON, DANE COUNTY, WISCONSIN**

  
Robert F. Phillips, P.E., City Engineer

## SECTION A: ADVERTISEMENT FOR BIDS

### REQUEST FOR BID FOR PUBLIC WORKS CONSTRUCTION CITY OF MADISON, WISCONSIN

#### A BEST VALUE CONTRACTING MUNICIPALITY

<b>CONTRACT NO.</b>	<b>PROJECT NAME:</b>
6803	SOUTH INGERSOLL STREET & RUTLEDGE STREET ASSESSMENT DISTRICT – 2012
<b>SBE GOAL</b>	6%

Plans and Specifications are available at 1600 Emil Street, Madison, WI 53713; 608-267-1197 or on our website at [www.cityofmadison.com/business/pw/contracts/openforBid.cfm](http://www.cityofmadison.com/business/pw/contracts/openforBid.cfm).

#### PREQUALIFICATIONS

Bidders who have not been prequalified by the City Engineer and Affirmative Action Director for the period of **February 1, 2012 to January 31, 2013** must submit their application on or before 1:00 p.m., MARCH 9, 2012, Room 115, City-County Building, Madison, WI 53703. Postmark is not applicable. Contractors be prequalified by the City Engineer including an affirmative action plan approved by the Affirmative Action Director prior to the bid opening or the bid will be rejected. Forms are available at the same location or on our website at [www.cityofmadison.com/business/pw/forms.cfm](http://www.cityofmadison.com/business/pw/forms.cfm).

#### PRE-BID MEETING

Representatives of the Affirmative Action Department will be present to discuss the Small Business Enterprise requirements on MARCH 2, 2012 at 1:00 PM at 1600 Emil Street, Madison Wisconsin.

#### OTHER REQUIREMENTS

Sealed bids must be accompanied with a Bid Bond equal to at least 5% of the bid or a Certificate of Annual/Biennial Bid Bond or certified check, payable to the City Treasurer.

Prevailing Wage Rates may be required and are attached in Section I of the contract. See Special Provisions to determine applicability.

Deadline for the Submittal of Bid is MARCH 9, 2012 by 1:00 PM, at 1600 Emil Street, Madison, WI 53713.

Bid Opening will be on MARCH 16, 2012 at 1:30 PM at 1600 Emil Street, Madison, WI 53713.

#### REQUEST FOR BIDS FOR PUBLIC WORKS CONSTRUCTION FOR THE CITY OF MADISON, WISCONSIN

#### A BEST VALUE CONTRACTING MUNICIPALITY

Plans and Specifications for Public Works Projects that are open for bid are available on the City of Madison website at <http://www.cityofmadison.com/business/PW/contracts/openforBid.cfm> or by calling City Engineering at 608-266-4751.

Sealed bids must be accompanied with a Bid Bond equal to at least 5% of the bid or a Certificate of Annual/Biennial Bid Bond or certified check, payable to the City Treasurer.

Prevailing Wage Rates may be required and are attached in Section I of the contract. See Special Provisions to determine applicability.

Bidders must be prequalified with the City Engineer and the Affirmative Action Director. Deadline date for submittal of application is noticed on our website. Forms are available on the web at <http://www.cityofmadison.com/business/pw/forms.cfm> or by contacting City Engineering at 608-266-4620

Publ. WSJ 2/24/12, 3/2/12

## SECTION B: INSTRUCTIONS TO BIDDERS

The City of Madison Standard Specifications for Public Works Construction - 2011 Edition, as supplemented and amended from time to time, forms a part of these contract documents as if attached hereto.

These standard specifications are available on the City of Madison Public Works website at [www.cityofmadison.com/Business/PW/specs.cfm](http://www.cityofmadison.com/Business/PW/specs.cfm) or by contacting City Engineering Division, Room 115, City-County Building, 210 Martin Luther King Jr. Blvd., Madison, WI 53703.

The Contractor shall review these Specifications prior to preparation of proposals for the work to be done under this contract, with specific attention to Article 102 **"BIDDING REQUIREMENTS AND CONDITIONS"** and Article 103 **"AWARD AND EXECUTION OF THE CONTRACT."** For the convenience of the bidder, below are highlights of three subsections of the specifications.

### Section 102.1: Pre-Qualification of Bidders

In accordance with Wisconsin State Statutes 66.0901 (2) and (3), all bidders must submit to the Board of Public Works proof of responsibility on forms furnished by the City. The City requires that all bidders be qualified on a biennial basis.

Bidders must present satisfactory evidence that they have been regularly engaged in the type of work specified herein and they are fully prepared with necessary capital, materials, machinery and supervisory personnel to conduct the work to be contracted for to the satisfaction of the City. All bidders must be pre-qualified by the Board of Public Works for the type of construction on which they are bidding prior to the opening of the bid.

In accordance with Section 39.02(9)(a)l. of the Madison General Ordinances, all bidders shall submit in writing to the Affirmative Action Division Manager of the City of Madison, a Certificate of Compliance or an Affirmative Action Plan at the same time or prior to the submission of the proof of responsibility forms. The bidder shall be disqualified if the bidder fails to or refuses to, prior to opening of the bid, submit a Certificate of compliance, Affirmative Action Plan or Affirmative Action Data Update, as applicable, as defined by Section 39.02 of the Madison General Ordinances (entitled Affirmative Action) and as required by Section 102.11 of the Standard Specifications.

### Section 102.4: Proposals

No bid will be accepted that does not contain an adequate or reasonable price for each and every item named in the Schedule of Unit Prices.

A lump sum bid for the work in accordance with the plans and specifications is required. The lump sum bid must be the same as the total amounts bid for the various items and it shall be inserted in the space provided.

All papers bound with or attached to the proposal form are considered a part thereof and must not be detached or altered when the proposal is submitted. The plans, specifications and other documents designated in the proposal form will be considered a part of the proposal whether attached or not.

A proposal submitted by an individual shall be signed by the bidder or by a duly authorized agent. A proposal submitted by a partnership shall be signed by a member/partner or by a duly authorized agent thereof. A proposal submitted by a corporation shall be signed by an authorized officer or duly authorized registered agent of such corporation, and the proposal shall show the name of the State under the laws of

which such corporation was chartered. The required signatures shall in all cases appear in the space provided therefore on the proposal.

Each proposal shall be placed, together with the proposal guaranty, in a sealed envelope, so marked as to indicate name of project, the contract number or option to which it applies, and the name and address of the Contractor. Proposals will be received at the place and until the hour on the date designated in the advertisement. When sent by mail, the sealed proposal marked as indicated above shall be enclosed in an additional envelope. Proposals sent by mail, submitted in person or otherwise delivered must be in the hands of the official conducting the letting by the hour on the date designated in the advertisement. Proposals received after the date designated will be returned to the bidder unopened.

**The Bidder shall execute form ERD-7777 (R.9/03), a part of these proposal pages and submit same with the bidder's proposal, if applicable. REFER TO PROPOSAL SECTION.**

Section 102.5: Bid Deposit (Proposal Guaranty)

No proposal shall be considered unless either (i) it is accompanied by a bid deposit of the character and amount described in the Advertisement for Bids or (ii) a biennial bid bond in an amount and form acceptable to the City of Madison has been previously submitted.

Bid deposits of unsuccessful bidders shall be returned following the award of the contract by the Common Council. Bid deposit of the successful bidders shall be returned within forty-eight (48) hours following execution of the contract and bond as required.

**Bidders for this Contract(s) must be Pre-Qualified for at least one of the following type(s) of construction denoted by an**

Building Demolition

101  Asbestos Removal

120  House Mover

110  Building Demolition

Street, Utility and Site Construction

201  Asphalt Paving

205  Blasting

210  Boring/Pipe Jacking

215  Concrete Paving

220  Con. Sidewalk/Curb & Gutter/Misc. Concrete Work

221  Concrete Bases and Other Concrete Work

225  Dredging

230  Fencing

235  Fiber Optic Cable/Conduit Installation

240  Grading and Earthwork

242  Infrared Seamless Patching

245  Landscaping, Maintenance

250  Landscaping, Site and Street

251  Parking Ramp Maintenance

255  Pavement Sealcoating and Crack Sealing

260  Petroleum Above/Below Ground Storage Tank Removal/Installation

265  Retaining Walls, Precast Modular Units

270  Retaining Walls, Reinforced concrete

275  Sanitary, Storm Sewer & Water Main Const.

280  Sewer Lateral Drain Cleaning/Internal TV Insp.

285  Sewer Lining

290  Sewer Pipe Bursting

295  Soil Borings

300  Soil Nailing

305  Storm & Sanitary Sewer Laterals & Water Svc.

310  Street Construction

315  Street Lighting

318  Tennis Court Resurfacing

330  Traffic Control During Construction

320  Traffic Signals

325  Traffic Signing & Marking

335  Trucking

399  Other \_\_\_\_\_

Bridge Construction

501  Bridge Construction and/or Repair

Building Construction

401  Floor Covering (including carpet, ceramic tile installation, rubber, VCT

402  Building Automation Systems

403  Concrete

404  Doors and Windows

405  Electrical - Power, Lighting & Communications

410  Elevator - Lifts

412  Fire Suppression

413  Furnishings - Furniture and Window Treatments

415  General Building Construction, Equal or Less than \$250,000

420  General Building Construction, \$250,000 to \$1,500,000

425  General Building Construction, Over \$1,500,000

428  Glass and/or Glazing

429  Hazardous Material Removal

430  Heating, Ventilating and Air Conditioning (HVAC)

433  Insulation - Thermal

435  Masonry

437  Metals

440  Painting and Wallcovering

445  Plumbing

450  Pump Repair

455  Pump Systems

460  Roofing and Moisture Protection

461  Solar Photovoltaic/Hot Water Systems

465  Soil/Groundwater Remediation

466  Warning Sirens

470  Water Supply Elevated Tanks

475  Water Supply Wells

480  Wood, Plastics & Composites-Structural & Architectural

499  Other \_\_\_\_\_

State of Wisconsin Certifications

- 1  Class 5 Blaster - Blasting Operations and Activities 2500 feet and closer to inhabited buildings for quarries, open pits and road cuts.
- 2  Class 6 Blaster - Blasting Operations and Activities 2500 feet and closer to inhabited buildings for trenches, site excavations, basements, underwater demolition, underground excavations, or structures 15 feet or less in height.
- 3  Class 7 Blaster - Blasting Operations and Activities for structures greater than 15 ' in height, bridges, towers, and any of the objects or purposes listed as "Class 5 Blaster or Class 6 Blaster".
- 4  Petroleum Above/Below Ground Storage Tank Removal and Installation (Attach copies of State Certifications.)
- 5  Hazardous Material Removal (Contractor to be certified for asbestos and lead abatement per the Wisconsin Department of Health Services, Asbestos and Lead Section (A&LS).) See the following link for application: <http://www.dhs.wisconsin.gov/Asbestos/Cert/Index.htm>. State of Wisconsin Performance of Asbestos Abatement Certificate must be attached.
- 6  Other \_\_\_\_\_

## SECTION C: SBE

### Instructions to Bidders City of Madison SBE Program Information

#### 2 Small Business Enterprise (SBE) Program Information

##### 2.1 Policy and Goal

The City of Madison reaffirms its policy of nondiscrimination in the conduct of City business by maintaining a procurement process which remains open to all who have the potential and ability to sell goods and services to the City. It is the policy of the City of Madison to allow Small Business Enterprises (SBE) maximum feasible opportunity to participate in City of Madison contracting. The bidder acknowledges that its bid has been submitted in accordance with the SBE program and is for the public's protection and welfare.

Please refer to the "ADVERTISEMENT FOR BIDS" for the goal for the utilization of SBEs on this project. SBEs may participate as subcontractors, vendors and/or suppliers, which provide a commercially useful function. The dollar value for SBE suppliers or 'materials only' vendors shall be discounted to 60% for purposes of meeting SBE goals.

A bidder which achieves or exceeds the SBE goal will be in compliance with the SBE requirements of this project. In the event that the bidder is unable to achieve the SBE goal, the bidder must demonstrate that a good faith effort to do so was made. Failure to either achieve the goal or demonstrate a good faith effort to do so will be grounds for the bidder being deemed a non-responsible contractor ineligible for award of this contract.

A bidder may count towards its attainment of the SBE goal only those expenditures to SBEs that perform a commercially useful function. For purposes of evaluating a bidder's responsiveness to the attainment of the SBE goal, the contract participation by an SBE is based on the percentage of the total base bid proposed by the Contractor. The total base bid price is inclusive of all addenda.

Work performed by an SBE firm in a particular transaction can be counted toward the goal only if it involves a commercially useful function. That is, in light of industry practices and other relevant considerations, does the SBE firm have a necessary and useful role in the transaction, of a kind for which there is a market outside the context of the SBE Program, or is the firm's role a superfluous step added in an attempt to obtain credit towards goals? If, in the judgment of the Affirmative Action Division, the SBE firm will not perform a commercially useful function in the transaction, no credit towards goals will be awarded.

The question of whether a firm is performing a commercially useful function is completely separate from the question of whether the firm is an eligible SBE. A firm is eligible if it meets the definitional criteria and ownership and control requirements, as set forth in the City of Madison's SBE Program.

If the City of Madison determines that the SBE firm is performing a commercially useful function, then the City of Madison must then decide what that function is. If the



commercially useful function is that of an SBE vendor / supplier that regularly transacts business with the respective product, then the City of Madison will count 60% of the value of the product supplied toward SBE goals.

To be counted, the SBE vendor / supplier must be engaged in selling the product in question to the public. This is important in distinguishing an SBE vendor / supplier, which has a regular trade with a variety of customers, from a firm which performs supplier-like functions on an ad hoc basis or for only one or two contractors with whom it has a special relationship.

A supplier of bulk goods may qualify as an eligible SBE vendor / supplier if it either maintains an inventory or owns or operates distribution equipment. With respect to the distribution equipment; e.g., a fleet of trucks, the term "operates" is intended to cover a situation in which the supplier leases the equipment on a regular basis for its entire business. It is not intended to cover a situation in which the firm simply provides drivers for trucks owned or leased by another party; e.g., a prime contractor, or leases such a party's trucks on an ad hoc basis for a specific job.

If the commercially useful function being performed is not that of a qualified SBE vendor / supplier, but rather that of delivery of products, obtaining bonding or insurance, procurement of personnel, acting as a broker or manufacturer's representative in the procurement of supplies, facilities, or materials, etc., only the fees or commissions will apply towards the goal.

For example, a business that simply transfers title of a product from manufacturer to ultimate purchaser; e. g., a sales representative who re-invoices a steel product from the steel company to the Contractor, or a firm that puts a product into a container for delivery would not be considered a qualified SBE vendor / supplier. The Contractor would not receive credit based on a percentage of the cost of the product for working with such firms.

Concerning the use of services that help the Contractor obtain needed supplies, personnel, materials or equipment to perform a contract: only the fee received by the service provider will be counted toward the goal. For example, use of a SBE sales representative or distributor for a steel company, if performing a commercially useful function at all, would entitle the Contractor receiving the steel to count only the fee paid to the representative or distributor toward the goal. This provision would also govern fees for professional and other services obtained expressly and solely to perform work relating to a specific contract.

Concerning transportation or delivery services: if an SBE trucking company picks up a product from a manufacturer or a qualified vendor / supplier and delivers the product to the Contractor, the commercially useful function it is performing is not that of a supplier, but simply that of a transporter of goods. Unless the trucking company is itself the manufacturer or a qualified vendor / supplier in the product, credit cannot be given based on a percentage of the cost of the product. Rather, credit would be allowed for the cost of the transportation service.

The City is aware that the rule's language does not explicitly mention every kind of business that may contribute work on this project. In administering these programs, the City would, on a case-by-case basis, determine the appropriate counting formula to apply in a particular situation.

## 2.2 Contract Compliance

Questions concerning the SBE Program shall be directed to the Contract Compliance Officer of the City of Madison Department of Civil Rights, Affirmative Action Division, 210 Martin Luther King, Jr. Blvd., Room 523, Madison, WI 53703; telephone (608) 266-4910.

## 2.3 Certification of SBE by City of Madison

The Affirmative Action Division maintains a directory of SBEs which are currently certified as such by the City of Madison. Contact the Contract Compliance Officer as indicated in Section 2.2 to receive a copy of the SBE Directory or you may access the SBE Directory online at [www.cityofmadison.com/dcr/aaTBDDir.cfm](http://www.cityofmadison.com/dcr/aaTBDDir.cfm).

All contractors, subcontractors, vendors and suppliers seeking SBE status must complete and submit the **Targeted Business Certification Application** to the City of Madison Affirmative Action Division by the time and date established for receipt of bids. A copy of the Targeted Business Certification Application is available by contacting the Contract Compliance Officer at the address and telephone indicated in Section 2.2 or you may access the Targeted Business Certification Application online at [www.cityofmadison.com/dcr/aaTBDDir.cfm](http://www.cityofmadison.com/dcr/aaTBDDir.cfm). Submittal of the Targeted Business Certification Application by the time specified does not guarantee that the applicant will be certified as a SBE eligible to be utilized towards meeting the SBE goal for this project.

## 2.4 Small Business Enterprise Compliance Report

### 2.4.1 Good Faith Efforts

Bidders shall take all necessary affirmative steps to assure that SBEs are utilized when possible and that the established SBE goal for this project is achieved. A contractor who self performs a portion of the work, and is pre-qualified to perform that category of work, may subcontract that portion of the work, but shall not be required to do so. When a bidder is unable to achieve the established SBE goal, the bidder must demonstrate that a good faith effort to do so was made. Such a good faith effort should include the following:

- 2.4.1.1 Attendance at the pre-bid meeting.
- 2.4.1.2 Using the City of Madison's directory of certified SBEs to identify SBEs from which to solicit bids.
- 2.4.1.3 Assuring that SBEs are solicited whenever they are potential sources.
- 2.4.1.4 Referring prospective SBEs to the City of Madison Affirmative Action Division for certification.
- 2.4.1.5 Dividing total project requirements into smaller tasks and/or quantities, where economically feasible, to permit maximum feasible SBE participation.
- 2.4.1.6 Establishing delivery schedules, where requirements permit, which will encourage participation by SBEs.
- 2.4.1.7 Providing SBEs with specific information regarding the work to be performed.
- 2.4.1.8 Contacting SBEs in advance of the deadline to allow such businesses sufficient time to prepare a bid.

- 2.4.1.9 Utilizing the bid of a qualified and competent SBE when the bid of such a business is deemed reasonable (i.e. 5% above the lowest bidder), although not necessarily low.
- 2.4.1.10 Contacting SBEs which submit a bid, to inquire about the details of the bid and confirm that the scope of the work was interpreted as intended.

#### 2.4.2 Reporting SBE Utilization and Good Faith Efforts

The Small Business Enterprise Compliance Report is to be submitted by the bidder in a separate sealed envelope marked: **“ENVELOPE 2 - SBE COMPLIANCE REPORT.”** This report is due by the specified bid closing time and date. Bids submitted without a completed SBE Compliance Report as outlined below shall be deemed non-responsible and the bidder ineligible for award of this contract.

- 2.4.2.1 If the Bidder meets or exceeds the goal established for SBE utilization, the Small Business Enterprise Compliance Report shall consist of the following:

- 2.4.2.1.1 **Cover Page**, Page C-7; and
- 2.4.2.1.2 **Summary Sheet**, C-8.

- 2.4.2.2 If the bidder does not meet the goal established for SBE utilization, the Small Business Enterprise Compliance Report shall consist of the following:

- 2.4.2.2.1 **Cover Page**, Page C-7;
- 2.4.2.2.2 **Summary Sheet**, C-8; and
- 2.4.2.2.3 **SBE Contact Report**, C-9 and C-10. (A separate Contact Report must be completed for each applicable SBE which is not utilized.)

#### 2.5 Appeal Procedure

A bidder which does not achieve the established goal and is deemed non-responsible for failure to demonstrate a good faith effort to achieve such goal and subsequently denied eligibility for award of contract may, within 72 hours of receiving such notification, appeal that decision to a special appeals committee composed of three (3) members of the Affirmative Action Commission, three (3) members of the Board of Public Works and a seventh member appointed by the Mayor. All appeals must be made in writing to the City Engineer and received within 72 hours of City of Madison’s notice. Postmark not applicable.

#### 2.6 SBE Requirements After Award of the Contract

The successful bidder shall identify SBE subcontractors, suppliers and vendors on the subcontractor list in accordance with the specifications. The Contractor shall submit a detailed explanation of any variances between the listing of SBE subcontractors, vendors and/or suppliers on the subcontractor list and the Contractor’s SBE Compliance Report for SBE participation.

No change in SBE subcontractors, vendors and/or suppliers from those SBEs indicated in the SBE Compliance Report will be allowed without prior approval from the Engineer and the Affirmative Action Division. The contractor shall submit in writing to the City of Madison Affirmative Action Division a request to change any SBE citing specific reasons which necessitate such a change. The Affirmative Action Division will use a general test of reasonableness in approving or rejecting the contractor's request for change. If the request is approved, the Contractor will make every effort to utilize another SBE if available.

The City will monitor the project to ensure that the actual percentage commitment to SBE firms is carried out.

## **2.7 SBE Definition and Eligibility Guidelines**

A Small Business Enterprise is a business concern awarded certification by the City of Madison. For the purposes of this program a Small Business Enterprise is defined as:

- A. An independent business operated under a single management. The business may not be a subsidiary of any other business and the stock or ownership may not be held by any individual or any business operating in the same or a similar field. In determining whether an entity qualifies as a SBE, the City shall consider all factors relevant to being an independent business including, but not limited to, the date the business was established, adequacy of its resources for the work in which it proposes to involve itself, the degree to which financial, equipment leasing and other relationships exist with other ineligible firms in the same or similar lines of work. SBE owner(s) shall enjoy the customary incidents of ownership and shall share in the risks and profits commensurate with their enjoyment interests, as demonstrated by an examination of the substance rather than form or arrangements that may be reflected in its ownership documents.
- B. A business with annual gross receipts of less than \$750,000 when averaged over the past three year period;

Firm and/or individuals that submit fraudulent documents/testimony may be barred from doing business with the City and/or forfeit existing contracts.

SBE certification is valid for one (1) year unless revoked.

SOUTH INGERSOLL STREET & RUTLEDGE STREET ASSESSMENT DISTRICT –  
2012  
CONTRACT NO. 6803

Small Business Enterprise Compliance Report  
Cover Sheet

This information **MUST** be submitted in a separate sealed envelope marked  
“ENVELOPE NO. 2 - SBE COMPLIANCE REPORT.”

Prime Bidder Information:

Company: \_\_\_\_\_

Address: \_\_\_\_\_

Telephone Number: \_\_\_\_\_ Fax Number: \_\_\_\_\_

Contact Person/Title: \_\_\_\_\_

Prime Bidder Certification:

I, \_\_\_\_\_, \_\_\_\_\_ of  
Name Title  
\_\_\_\_\_ certify that the information  
Company

contained in this SBE Compliance Report is true and correct to the best of my knowledge and belief.

\_\_\_\_\_  
Witness' Signature

\_\_\_\_\_  
Bidder's Signature

\_\_\_\_\_  
Date

**SOUTH INGERSOLL STREET & RUTLEDGE STREET ASSESSMENT DISTRICT –  
2012  
CONTRACT NO. 6803**

**Small Business Enterprise Compliance Report**

**Summary Sheet**

**This information MUST be submitted in a separate sealed envelope marked  
“ENVELOPE NO. 2 - SBE COMPLIANCE REPORT.”**

**SBE SUBCONTRACTORS WHO ARE NOT SUPPLIERS**

Name(s) of SBEs Utilized	Type of Work	% of Total Bid Amount
<b>Subtotal SBE who are not suppliers:</b>		_____ %

**SBE SUBCONTRACTORS WHO ARE NOT SUPPLIERS**

Name(s) of SBEs Utilized	Type of Work	% of Total Bid Amount
<b>Subtotal Contractors who are not suppliers:</b>		_____ % x 0.6 = _____ % (discounted to 60%)

**Total Percentage of SBE Utilization: \_\_\_\_\_ %.**

**SOUTH INGERSOLL STREET & RUTLEDGE STREET ASSESSMENT DISTRICT –  
2012  
CONTRACT NO. 6803**

**Small Business Enterprise Compliance Report**

**SBE Contact Report**

**This information MUST be submitted in a separate sealed envelope marked  
“ENVELOPE NO. 2 - SBE COMPLIANCE REPORT.”**

Submit separate copy of this form for each SBE which you are not able to utilize towards meeting the SBE goal for this project. Attach separate sheets if necessary.

SBE Information:

Company: \_\_\_\_\_

Address: \_\_\_\_\_

Telephone Number: \_\_\_\_\_

Contact Person/Title: \_\_\_\_\_

1. Outline below all efforts to solicit a bid from the above SBE. Include date, means of contact, who from your company made this contact and the result.

\_\_\_\_\_  
\_\_\_\_\_  
\_\_\_\_\_

2. Describe the information provided to the aforementioned SBE regarding the scope of work for which he/she was to provide a bid.

\_\_\_\_\_  
\_\_\_\_\_  
\_\_\_\_\_

Is this the same scope of work on which the subcontractor you intend to utilize based his/her bid?

Yes     No

3. Did this SBE submit a bid?     Yes     No

4. Is the General Contractor pre-qualified to self-perform this category of work?

Yes     No

5. If you responded "Yes" to Question 3, please check the items below which apply and provide the requested detail. If you responded "No" to Question 3, please skip ahead to item 6 below.

- The SBE listed above is unavailable for work on this project for the following reasons. Provide specific detail for this conclusion.

---

---

- The SBE listed above is unqualified for work on this project. Provide specific details for this conclusion.

---

---

- The SBE listed above provided a price that was unreasonable (i.e. more than 5% above the lowest bidder). Provide specific detail for this conclusion including the SBE's price and the price of the subcontractor you intend to utilize.

---

---

- A contract with the SBE listed above may constitute a breach of the bidder's collective bargaining agreements. Provide specific detail for this conclusion including, but not limited to, correspondence from the SBE indicating it will not sign a project labor agreement and/or correspondence from the applicable trade union indicating a project labor agreement will not be allowed at the time of project bidding.

---

---

- Other; please specify reason(s) other than listed above which made it impossible for you to utilize this SBE on this project.

---

---

6. Describe any other good faith efforts:

---

---



**SECTION D: SPECIAL PROVISIONS**

**SOUTH INGERSOLL STREET & RUTLEDGE STREET ASSESSMENT DISTRICT –  
2012  
CONTRACT NO. 6803**

It is the intent of these Special Provisions to set forth the final contractual intent as to the matter involved and shall prevail over the Standard Specifications and plans whenever in conflict therewith. In order that comparisons between the Special Provisions can be readily made, the numbering system for the Special Provisions is equivalent to that of the Specifications.

Whenever in these Specifications the term “Standard Specifications” appears, it shall be taken to refer to the City of Madison Standard Specifications for Public Works Construction and Supplements thereto.

**SECTION 102.10      MINIMUM RATE OF WAGE SCALE**

If required, the wages and benefits paid on the contract shall not be less than those specified in the Prevailing Wage Determination included with these contract documents for the following types of work:

- Building and Heavy Construction
- Sewer, Water, and Tunnel Construction
- Local Street and Miscellaneous Paving Operations
- Residential and Agricultural Construction

All bidders are notified that all labor employed on City contracts must be paid in accordance with the minimum rate of wage scale included in the Contract Documents.

For the information of the employees working on the project, a copy of the wage scale included in the contract documents and the provisions of Section 66.0903(8) of the Wisconsin Statutes shall be kept posted by the employer and in at least one conspicuous and easily accessible place at the site of the project.

The Contractor shall keep weekly payroll records setting forth the name, address, telephone number, classification, wage rate and fringe benefit package of each employee who worked on such City project and all other projects the employee worked in the same period, and the Contractor must keep records of the individual time each employee worked on the project and for each day of the project. Such records shall also set forth the total number of hours of overtime credited to each such employee for each day and week and the amount of overtime pay received in that week. Such records shall, in addition, set forth the full weekly wages earned by each such employee and the actual hourly wage paid to that employee. The Contractor shall submit payroll records to the Engineer every week for those periods when work is being done on the project. Said submittal shall be within twenty-one (21) calendar days of the end of the Contractor’s weekly pay period.

The Contractor shall ensure that employees shall be paid unconditionally and shall receive the full amounts accrued at the time of payment, computed at rates not less than those stated in the City of Madison “Minimum Rate of Wage Scale” and that each employee’s rate shall be determined by the work that is done within the trade or occupation classification which should be properly assigned to such employee. Questions regarding an employee’s classification or rate of pay within that classification, shall be resolved by the practice that predominates in the industry and on which the trade or occupation rate/classification is based. Therefore, rate of pay, classification and work jurisdiction disputes shall be resolved by relying upon practices established by collective bargaining agreements and guidelines used in such determinations by appropriate recognized trade unions operating within the City of Madison.

The Contractor shall agree that the normal rate of wage paid to the Contractor's employees on other projects shall not be reduced or otherwise diminished as a result of the requirement to pay no less than the minimum rate of wage scale on a City project. Mulcting of employees on City projects by contractors, such as by kickbacks or other such devices, is prohibited.

These contract provisions shall apply to all work performed on the contract by the Contractor with its own organization and with assistance of laborers under its immediate superintendency and to all work performed by piecework or by subcontract. No laborer, worker, or mechanic shall be employed directly upon the site of the work except on a wage basis, but this shall not be construed to prohibit the rental of equipment from individuals.

In the event of a refusal by the Contractor to submit payroll records as required by the contract, the City of Madison shall have the option to cancel this contract and request the Surety to perform or to relet the balance of the work for bids, and in that event, to charge the Contractor for any loss which the City may incur thereby.

#### **SECTION 102.12      BEST VALUE CONTRACTING**

This Contract shall be considered a Best Value Contract if the Contractor's bid is equal to or greater than \$51,500 for a single trade contract; or equal to or greater than \$251,000 for a multi-trade contract pursuant to MGO 33.07(7).

#### **ARTICLE 104      SCOPE OF WORK**

The work under this contract shall include installation of storm and sanitary sewer systems, water main, curb and gutter, concrete terrace, base preparation, asphalt pavement, drive aprons and sidewalk replacement as necessary.

The project is approximately 1,300 ft in length. The project limits for the work are:  
South Ingersoll Street: from Jenifer Street to south end (Lake Monona)  
West Doty Street: from Ingersoll Street to Few Street

The Contractor shall view the site prior to bidding to become familiar with the existing conditions. It will be the responsibility of the Contractor to work with the utilities located in the right of way to resolve conflicts during the construction process.

#### **SECTION 105.1      AUTHORITY OF THE ENGINEER**

The Engineer shall resolve all questions which arise as to the quality and acceptability of materials furnished, work performed, manner of performance, rate of progress of the work, interpretation of the plans and Specifications, acceptable fulfillment of the contract, compensation, and disputes and mutual rights between Contractors under the Specifications. The Engineer shall determine the amount and quantity of work performed and materials furnished.

All decisions of the Engineer shall, when so requested, be rendered in writing. They shall be final and conclusive in all matters unless within ten (10) days after such decision the Contractor applies in writing to the Board of Public Works for a review of such decision.

Any change proposed by a Contractor in SBE subcontractors, vendors or suppliers from those SBEs indicated on the SBE Compliance Report must be approved by the Engineer and the City's Manager of the Affirmative Action Division (hereafter, AAD). When requested, such decision shall be rendered in writing. Such decisions shall be final and conclusive in all matters unless within ten (10) days after such

decision the Contractor or the affected SBE applies in writing to the Board of Public Works for a review of such decision.

In the event the Engineer and the AAD disagree over the proper decision to be made regarding an SBE, the Mayor shall appoint a third person to resolve the disagreement, within 30 days of appointment. The decision thus rendered may be reviewed by the Board of Public Works upon request of the Contractor or the affected SBE as set forth in Sections 105.1 and 105.2 of the City's standard specifications.

#### **SECTION 105.12      COOPERATION BY THE CONTRACTOR**

The Contractor shall use care around existing trees, plantings, fences, walls, steps and driveways that are indicated on the plans to remain. Damage to these items during construction shall be repaired or replaced at the Contractor's expense. No trees, other than those shown on the plan to be removed, shall be cut without the approval of the Engineer and the City Forester; the abutting property owners shall be notified in accordance with the City's Administrative Procedure Memorandum No. 6-2.

MG&E electric work shall be completed with this project. The Contractor shall coordinate their work to allow access to the utility company to install new facilities and resolve any conflicts that may arise. Known work will take place at the corner of South Ingersoll Street and Rutledge Street during the construction of the new intersection geometry.

The Contractor shall maintain access for mail delivery and garbage/recycling pickup for all properties in the project area.

The existing storm sewer located in the terrace of Ingersoll St from Jenifer St to Spaight St will be lined by others in approximately the same time frame as the proposed project. It shall be the Contractor's responsibility to verify this information and any subsequent changes in the scheduling of the work by others and to make corrections in his/her construction timetable as required.

All staging and construction equipment must be stored within project limits

#### **SECTION 107.7      MAINTENANCE OF TRAFFIC**

All signing and barricading shall conform to Part VI of the Federal Highways Administrations "Manual on Uniform Traffic Control Devices" (MUTCD), the State of Wisconsin Standard Facilities Development Manual (including Chapter 16 – Standard Detail Drawings) and the City of Madison Standards for sidewalk and bikeway closures.

The Contractor shall submit an acceptable Traffic Control Plan, including all necessary phases, to the office of the City Traffic Engineer, at 215 Martin Luther King, Jr. Blvd, Suite 100, Madison, WI 53703, a minimum of five (5) working days prior to the pre-construction meeting. The Traffic Control Plan shall address all requirements of this section of the Special Provisions. The successful bidder shall work with the City Traffic Engineering Division to develop an approved Traffic Control Plan. The Contractor shall not start work on this project until the Traffic Engineering Division has approved a traffic control plan and traffic control devices have been installed, in accordance with the approved plan. Failure of the Contractor to obtain approval of a Traffic Control Plan, as specified above, may prevent the Contractor from starting work and shall be considered a delay of the project, caused by the Contractor.

The Contractor shall be responsible for installing and maintaining traffic control in accordance with the approved Traffic Control Plan and as directed by the City Traffic Engineer. The traffic control plan may need to be altered as conditions change in the field or as unexpected conditions occur. This may include relocating existing traffic control or providing additional traffic control. The Contractor shall install and

maintain any necessary modifications or additions to the traffic control, as directed by the City Traffic Engineer, at no cost to the City.

The Contractor may remove parking within the project limits as indicated on the Traffic Control Plan. The Contractor shall be responsible for posting and maintaining NO PARKING signs in accordance with City of Madison Police Department's "Guidelines for Temporary No Parking Restrictions for Construction or Special Events".

South Ingersoll Street and Rutledge Street may be closed to through traffic, at the project limits, for the duration of the project. Spaight Street at the intersection of South Ingersoll Street may be closed during off peak hours to accommodate utility construction and street reconstruction. Local and emergency vehicle access shall be maintained at all times.

During sanitary sewer construction in the Jenifer Street intersection, flaggers shall be used to maintain two-way traffic, including Metro bus traffic, on Jenifer Street. Construction within the Jenifer Street intersection shall only be performed during off-peak traffic hours (9:30am-3:00pm) and shall be limited to one day.

The work areas shall be backfilled, plated, or protected by traffic control devices during non-working hours. If steel plates are used, the Contractor shall notify the City of Madison Streets Division, 266-4681, (1) working day prior to placement of the plates.

The Contractor shall provide ADA/Handicap Accessible pedestrian access at all intersections within the construction area at all times.

No construction equipment or materials shall be stored in the roadway or street right-of-way that is open to traffic during non-working hours. Construction equipment and materials are not to be stored within the street right-of-way that is outside the project limits as shown on the approved plan.

Contact Tom Mohr, Traffic Engineering Division, 267-8725, with any questions concerning these traffic control specifications.

**SECTION 107.8      NOTIFICATION WHEN CLOSING STREET**

The Contractor shall not remove traffic signs. For removal or replacement of traffic and parking signs, contact the City of Madison Traffic Engineering Field Operations, 1120 Sayle Street, 266-4767, 8:00 a.m. to 4:00 p.m., a minimum of one (1) working day in advance of when any existing signs need to be removed. This service is provided free of charge. If the Contractor removes the signs, the Contractor will be billed for the reinstallation of, and any damage to, the signing equipment.

**SECTION 109.2      PROSECUTION OF WORK**

The Contractor shall begin work on or before **MAY 7, 2012**. The date of completion of the contract shall be **JULY 27, 2012**. Work shall follow Section 107.7 Maintenance of Traffic herein these specifications unless approved by the Engineer.

Work shall begin only after the start work letter is received.

**SECTION 210            EROSION CONTROL**

The standard specifications for Erosion Control are supplemented as follows. The Contractor shall be responsible for final stabilizing (seeding/matting/sodding/...as called for in the contract) the disturbed terrace area within 10 calendar days after the pouring of adjacent curb and gutter, unless alternate phasing is approved by the Construction Engineer. This specification shall be interpreted by the Contractor to require multiple trips to the job site by the landscaping subcontractor and the Contractor shall plan for that to occur.

**BID ITEM 20201 – EXCAVATION CUT**

Removal and disposal of the timber and stone retaining wall on the 600 block of South Ingersoll and concrete flume at the end of the cul-de-sac on South Ingersoll shall be included in payment under this item.

**BID ITEM 20336 – PIPE PLUGS**

Structures called out for removal and/or abandonment shall have the existing pipes plugged at the structure, as noted in the plans, and shall be paid for under this bid item. This includes plugs necessary to abandon sanitary sewer laterals. All work under this item shall comply with Article 203 of the Standard Specifications. Any plugs requiring abandoning the existing sanitary main where laterals are being extended shall be considered incidental to BID ITEM 50353 SANITARY SEWER LATERALS.

**SECTION 203.2            DISPOSING OF MATERIALS**

The Contractor shall comply with Section 203.2 of the City of Madison Standard Specifications for Public Works Construction with regard to salvaging castings.

**BID ITEM 30201 – TYPE “A” CONCRETE CURB & GUTTER**

New concrete curb & gutter on Rutledge Street shall be paid within this bid item. This work includes areas of damaged curb and areas where curb will be replaced due to utility work.

**SECTION 500            SEWERS AND SEWER STRUCTURES**

**STORM SEWER GENERAL**

The designer of this project is Elia E. Acosta (266-4096) [eacosta@cityofmadison.com](mailto:eacosta@cityofmadison.com).

This project includes sliplining approximately 161 feet of 24 inch diameter HDPE storm sewer into an existing 30” VP storm sewer main. The Contractor shall view the site prior to bidding to become familiar with the existing conditions. The storm sewer scheduled to be sliplined discharges directly to Lake Monona and has no equipment access.

Reconnection of existing pipes at new structures, or new pipes at new structures, shall be considered to be part of the work required to construct the new structure or to construct the new sewer pipe and shall not be rewarded with additional compensation. However, if the structure being removed is larger than the new structure, thus requiring additional pipe, the new pipe shall be paid under the appropriate bid item and the connection of the old pipe to the new pipe shall be accomplished with a concrete collar.

Where a new structure is to be constructed at an existing pipe, it is expected that the contractor shall saw cut the existing pipe in the required location to accommodate the placement of the new structure. If the

contractor for his or her convenience deems it more suitable to remove the existing pipe to a full joint, the additional pipe and concrete collar required to reconnect to the new structure shall be the contractor's responsibility and shall not be compensated.

If there are structures where the pipe walls are to be poured into the structure roof of both the pipe walls and the structure casting are to be poured in the structure roof, the contractor shall not be provided additional compensation for complying with the structure requirements detailed on the storm sewer chart and plans.

Precast structures are only allowed where field poured structures are not specifically called for, and no precast structures are allowed until ULO's are completed and approval of the design engineer has been received.

## **SANITARY SEWER GENERAL**

The designer of this project is Elia E. Acosta (266-4096) eacosta@cityofmadison.com.

Sanitary sewer pipe work shall include installing new PVC SDR 35 & SDR 26 at the sizes and locations that are specified on the plan set and in accordance with the Standard Specifications.

Installation of SDR-26 pipe shall be considered incidental to BID ITEM 50301 & 50353.

No additional compensation will be given for installation of SDR-26 pipe.

All new sanitary sewer access structures shall include Neenah R-1550 castings with the new City of Madison casting detail (see S.D.D. 5.7.16) of the City of Madison Standard Specifications for Public Works Construction 2011 ed. All new sewer main connections may be factory cored and shall be included in the structure. All existing lateral and main connections shall be field cored to accommodate existing conditions and shall be compensated under BID ITEM 50791 SANITARY SEWER TAP. All sewer main and/or laterals not slated for replacement that are damaged during the installation of a structure shall be replaced by the Contractor and shall be considered incidental to the project. All benches and flowlines shall have a smooth trowel finish.

It is advised that the Contractor visit the site prior to bidding to determine the type of trench protection that will be necessary for the sanitary sewer main installation.

## **SECTION 510 – SEWER SLIPLINE REHABILITATION OF STORM SEWER**

### **SECTION 510.1      INTENT**

The intent of sliplining is to rehabilitate non-pressure storm sewer lines by insertion of a polyethylene liner pipe into the sewer line. When complete, the liner will extend from one manhole to the next manhole or end of pipe in a continuous, watertight length.

### **SECTION 510.2      REFERENCE DOCUMENTS**

This document references American Society of Testing and Materials (ASTM) standard specifications which are made a parts hereof by such reference and shall be the latest edition and revision.

- ASTM D2321, Practice for Underground Installation of Flexible Thermoplastic Pipe for sewers and other gravity flow applications

- ASTM D3035, Specification for Polyethylene (PE) Plastic Pipe (DR-17) Based on Controlled Outside Diameter.
- ASTM D3350, Specification for Polyethylene Plastic Pipe and Fittings Materials
- ASTM F585, Practice for Insertion of flexible Polyethylene Plastic Pipe (SDR-PR) based upon outside diameter
- ASTM F 1417 Standard Test Method for Installation Acceptance of Plastic gravity sewer lines using low-pressure air.

### **SECTION 510.3      CONTRACTOR PRE-QUALIFICATIONS**

The Contractor shall be verified by the pipe sliplining system manufacturer as a fully trained user of the proposed pipe sliplining system. The pipe sliplining system shall be operated by personnel trained by a qualified representative of the pipe sliplining system manufacturer. The Construction Engineer may require the Contractor to provide certificates of training for any employee directly involved in the supervision or operation of the pipe sliplining system. Polyethylene pipe jointing shall be performed by personnel trained in the use of butt-fusion equipment and recommended methods for new pipe connections. Personnel directly involved with new pipe installation shall receive training in the proper methods for handling and installing the polyethylene pipe. Such training shall be conducted by a qualified representative of the fusion equipment manufacturer.

The Contractor shall be a licensed Contractor by the City of Madison for sewer and water construction.

The Contractor shall assume all costs arising from the use of any patented materials, equipment, devices, or process used on or incorporated in the work and agrees to indemnify and save harmless the City of Madison and its employees from all suits of law for the use of any patented materials, equipment, devices or processes.

### **SECTION 510.4      QUALITY ASSURANCE**

The Contractor is solely responsible for quality assurance during the length of the project. The Contractor is responsible for any costs associated with corrective measures required to replace or repair items not meeting the quality standards specified by the Construction Engineer.

Any PE piping materials may be rejected for failure to meet any of the requirements of the specification. Pipe and fittings shall be homogeneous throughout and free of serious abrasion, cracks, kinking, flattening, holes blisters and any other visual defects.

### **SECTION 510.5      SUBMITTALS**

The Contractor shall submit the items listed below for review and approval by the City of Madison in accordance with the Contract Documents. The Construction Engineer shall grant approval of the submittals prior to ordering pipe materials and/or commencing the pipe replacement process. The Engineer will complete the review as quickly as possible, but may require up to ten (10) working days from the date the submittals re received until they are returned to the Contractor.

Shop Drawings, Catalog Numbers, and Manufacturer technical data showing complete information regarding material composition, physical properties, and dimensions of new pipe and fittings. Spacer data shall be included with the submittal. Non-Center Stainless Restrained Steel Spacers (PSI S8GN-2 or approved equivalent)

Mix Design of grout to be used for annular space and in the void between the HDPE pipe and the bench.

Verifications of training by the pipe sliplining systems manufacturer stating that the operators on-site have been fully trained in the use of the proposed pipe sliplining equipment by an authorized representative of the equipment manufacturer.

Verifications from the pipe manufacturer of training in the proper method of handling and installing the new pipe. Verifications of training by the pipe fusion equipment manufacturers that the operators have been fully trained in the use of the fusion equipment by an authorized representative of the equipment manufacturer.

Detailed construction procedures, and layout plans to include sequence of construction.

Methods of modification, if required, for existing sewer access structures. Sewer bypass plans, including detailed methods and a list of equipment to be utilized.

Contingency plans for the following undesired conditions: Unforeseen obstructions causing stoppage, such as unanticipated changes in host pipe material, repair sections, concrete encasements or cradles, buried or abandoned manholes, or changes in direction not depicted on maps provided by the City.

## **SECTION 510.6        DELIVERY, STORAGE, AND HANDLING**

The Contractor shall transport, handle, and store pipe and fittings as recommended by the manufacturer to prevent damage. If new pipe and fittings become damaged before or during installation it shall be repaired or replaced, as recommended by the manufacturer or required by the Engineer at no additional cost to the City.

No materials shall be dumped, dropped, pushed, or rolled into any trench. Pipe shall be less than 2 years old at the time of installation

## **SECTION 511        MATERIAL SPECIFICATIONS**

### **SECTION 511.1        PIPE SPECIFICATIONS**

The polyethylene material dimensions and performance properties of solid wall polyethylene pipe shall be in accordance with ASTM D 3035 or ASTM F 714. The polyethylene material used to manufacture the pipe and fittings shall be high density polyethylene compounds which meet or exceed the cell classification PE 345464C in accordance with ASTM 3350-06.

The polyethylene material dimensions and performance requirements for polyethylene fittings shall be in accordance with ASTM D 3261 for molded fittings or ASTM F 2206 for fabricated fittings or ASTM F 1055 for electrofusion fittings.

The Contractor shall install pipe made of virgin materials. No reworked pipe except that obtained from the manufacturers own production of the same formulation shall be used.

The new pipe shall be homogenous throughout and shall be free of visible cracks, holes, foreign material, blisters, or other deleterious faults.

### **SECTION 511.2        PIPE SPACERS**

Non-Center Stainless Restrained Steel Spacers (PSI S8GN-2 or approved equivalent) shall be installed in the 30" VP pipe to fix the new 24" pipe to the bottom of the 30" VP carrier pipe. Spacers shall be installed in accordance with the manufacturer's specifications.



## SECTION 512                    INSTALLATION PROCEDURE

The following installation procedures shall be observed unless otherwise specified by the Construction Engineer:

- 1) Cleaning of Sewer Line: Prior to any sliplining of a line so designated, the Contractor shall clean debris out of the storm line. The method of removal shall not damage the existing line.
  
- 2) Television Inspection: Videos CD's of the existing sewer line shall be provided by the City for use by the contractor in planning the work. To confirm line condition, the contractor may inspect the line prior to starting the project. The contractor shall be responsible for locating obstructions and other problems prior to the sliplining.

Videos and TV reports of the storm sewer that is planned to sliplined with this project has been included in Attachment A as well as online at the following website. This information has been made available to you for bidding purposes. If you have problems, DVDs or CDs will also be available upon request. In order to access the videos online, enter the following on your Microsoft Internet Explorer address bar:

<ftp://ftp.cityofmadison.com>

click Page

select Open FTP site in Windows Explorer

Enter the following at the prompt:

Username: cityftp

Password: 2upload!

If you are not prompted, go to the File menu and select Login As and use the following use the following Username/ password combination:

Username: cityftp

Password: 2upload!

After you have accessed the City ftp site, the directory of interest for this project is called INGERSOLL STORM SEWER. Copy the video files and pdf files onto your hard drive, and the videos are yours to watch for bidding. If you have problems, the videos and pdfs will be available on DVDs or CDs upon request.

3) Line Obstructions: It is the responsibility of the Contractor to clear the line of obstructions, solids, dropped joints, or collapsed pipe that would prevent insertion or damage the liner during insertion. The City will clean the sewer in advance of the project but it will be the responsibility of the contractor clear obstructions to slipline the sewer. Excavations to remove obstructions or if the pipe is stuck during the sliplining process shall be approved by the Construction Engineer prior to the commencement of excavation work.

4) Excavation: Insertion pit shall be at S-7 (new) & S-8 (to remain) as shown on the plan set, no access shall be allowed for insertion at the downstream end. If additional insertion pits are required, the Construction Engineer shall approve the insertion pits and their locations prior to starting this work. The insertion pit size shall be no larger than is necessary. The pit shall be sloped as required by the manufacturer or supplier. The sides of the pit must be supported and conform to OSHA requirements. The pit shall be wide enough to install the liner without damage.

5) Joining of HDPE Liner Pipe:

5.1 Solid wall HDPE pipe shall be joined in accordance with ASTM F 2620. All butt fusion welds shall be made by trained personnel. Butt fusion equipment shall be inspected prior to arrival at the job site. The HDPE pipe shall be assembled and joined at the site using the butt-fusion method to provide a leak proof joint. Threaded or solvent-cement joints and connections are not permitted.

All equipment and procedures shall be used in strict compliance with the manufacturer recommendations. Fusion shall be pre-formed by technicians certified by a manufacturer of pipe fusion equipment.

The butt-fused joint shall be true alignment and shall have uniform rollback beads resulting from the use of proper temperature and pressure. The joint shall be allowed adequate cooling time before removal of pressure. The fused joint shall be watertight and shall have tensile strength equal to or greater than that of the pipe. All joints shall be subject to acceptance by the Construction Engineer prior to insertion.

The Contractor shall cut out and replace defective joints at no additional cost to the City. Any section of the pipe with a gash, blister, abrasion, nick, scar, or other deleterious fault greater in depth than ten percent (10%) of the wall thickness (ASTM 585), shall not be used and must be removed from the site. However, a defective area of the pipe may be cut out and the joint fused in accordance with the procedures stated above. In addition, any section of the pipe having other defects such as concentrated ridges, discoloration, excessive spot roughness, pitting, variable wall thickness or any other defect of manufacturing or handling as determined by the Construction Engineer shall be discarded and not used.

Terminal sections of pipe that are joined within the insertion pit shall be connected with a mechanical coupling (e.g. a full-circle stainless repair clamp), electro-fusion couplings (e.g. Central Plastics or equivalent), or a non-shear restraint coupling. All connections shall be in conformance with the manufacturer's installation procedures.

Equipment not in satisfactory condition will not be allowed to fuse the pipe.

Solid wall HDPE pipe can be joined using stainless steel full encirclement clamps when insertion pipes are not located at the manhole.

6) Insertion of the Fused Liner: The polyethylene liner can be installed by pulling or a combination thereof.

6.1 During insertion, precautions shall be taken to protect the liner pipe from scratches and gouges. The liner shall be protected from ragged edges of the broken sewer pipe.

6.2 The liner pipe shall be allowed to relax and come to thermal equilibrium before sealing the annular space between the liner and the existing sewer pipe at the manhole. The liner must extend at least 8" into the access structures.

7) Sewer Access Structures

7.1 All liners through manholes shall be cut out.

7.2 Sealing Polyethylene Pipe in existing Manhole: The annular space between the polyethylene liner and the existing sewer line shall be sealed where the liner enters or exits manholes. The sealing materials shall be compatible with the HDPE liner pipe and shall provide a watertight seal. The pipe shall be allowed to relax and come to thermal equilibrium for a period of 24 hours before sealing. Seal the upstream manhole liner connection, connect services to the liner, and then seal the downstream manhole connection. Acceptable materials are urethane foam, oakum or low shrink grout.

7.3 Foam sealant shall not protrude into the manhole and shall be finished over with a quick-set, non-shrink cement grout.

8) Spacers: Non-Center Stainless Restrained Steel Spacers (PSI S8GN-2 or approved equivalent) shall be installed in the 30" VP pipe to fix the new 24" pipe to the bottom of the 30" VP pipe. Spacer- Isolators shall be installed in conformance manufacture's recommendation for required spacing and attachment to

the new HDPE pipe. The annular space between the 24" HDPE pipe and the 30" VP shall be pressure grouted. Spacer outside diameter shall not exceed 28" in the 30" VP to allow for movement within the host pipe.

9) Grouting of the annular space

Grouting shall be performed for pipes with annular spaces of one inch or larger. Sealing of annular spaces shall not be done until a minimum of 24 hours has elapsed from completion of the insertion of the new pipe. After the liner is pulled into place, inspected and tested, the entire annular space between the outside of the liner and the inside of the existing pipe shall be grouted. The annular space shall be filled with a non-shrink grout (less than 1 percent shrinkage by volume). The Contractor shall design a grout mix with a density to prevent floating of the liner pipe. The apparent viscosity shall not exceed 20 seconds in accordance with ASTM C939. Samples of grout shall be obtained in accordance with ASTM C172. One set of three standard cylinders shall be cast for each sliplined sewer reach in accordance with ASTM C31. Testing of specimens for compressive strength shall be in accordance with ASTM C39. One test shall be made 24 hours from time of casting and two tests shall be made 28 days from time of casting. The average of the 28-day strength tests shall be equal to or greater than 300 psi tested in accordance with ASTM C495 or C109. If the 24 hour strength is less than 100 psi for any reach, per ASTM C403, the cement ratio shall be increased on subsequent reaches as directed by the Contractor's engineer. All testing shall be at the Contractor's expense.

The Contractor shall submit to the Engineer the proposed grouting mix, the proposed densities and viscosities, initial set time of the grout, the proposed grouting method, the maximum injection pressures, the 24-hour and 28-day minimum compressive strength, the proposed grout stage volumes, Bulkhead designs, Buoyant force calculations, flow control, provisions for service connections, pressure gauge certification, and vent location plans. The grouting system shall have sufficient gauges, monitoring devices, and tests to determine the effectiveness of the grouting operation and to ensure compliance with the liner pipe specifications and design parameters. The grouting materials shall be mixed in equipment of sufficient size and capacity to provide the desired amount of grout material for each stage in a single operation. The equipment shall be capable of mixing the grout at densities required for the approved procedure and shall also be capable of changing density as dictate by field conditions any time during the grouting operation. Grouting of the annular space shall be done in such a manner as to prevent deformation or collapse of the liner. Grout shall be pumped into the annular space at manholes, service connections, and wherever the line is exposed. The Contractor shall excavate additional grouting points if necessary. A grout pressure gauge and recorder shall be installed immediately adjacent to each injection port. During operations, the recorder shall continuously record the actual grouting pressure versus time on paper with ink. The gauge shall conform to an accuracy of  $\pm 0.5$  psi. The range of the gauge shall not be more than 100 percent greater than the design grout pressure. Pressure gauges shall be instrument oil filled and attached to a saddle-type diaphragm seal (gauge saver) to prevent clogging with grout. All gauges shall be certified and calibrated in accordance with ANSI B40, Grade 2A. The grout pressure recordings shall be identified, as a minimum, with the date, batch, and time of day grouting was performed and shall be submitted to the Engineer at the end of the work day that grouting was performed. The gauged pumping pressure shall not exceed the liner pipe manufacturer's approved recommendations or 8 psig for SDR 17 HDPE pipe. The grout shall fill at least 95 percent of the calculated volume of the annular space. The Contractor shall trowel the grout to form a smooth transition between manhole base and liner

10) Backfill:

10.1 At all points where the liner pipe has been exposed (such as the insertion pit, at a service connection, or other points to remove obstructions), the polyethylene pipe and fittings shall be encased in cement-stabilized sand or other material as specified by the Construction Engineer. The purpose of this encasement material is to support the liner and prevent deflection.

10.2 When encasement material is used, debris and soil shall be removed along each side of the existing pipe or the liner down to the spring line.

10.3 After the encasement materials is in place and accepted by the Construction Engineer, backfill shall be placed and compacted as required.

11) Final Acceptance:

After installation of the liner, the Contractor shall, at the option of the Construction Engineer, either TV inspect the sewer line or conduct a low pressure test on the liner.

12) Cleanup:

After the installation work has been completed and all testing found acceptable, the Contractor shall clean up the entire project area and return the ground cover to grade. All excess material and debris not incorporated into the permanent installation shall be disposed of by the Contractor. Sidewalks, driveways, and street surfaces shall be recovered. Terrace Restoration shall be paid for separately (BID ITEM 20711)

## **SECTION 513            FIELD TESTING**

After the existing sewer is completely replaced, the Contractor shall perform an internal inspection with a television camera and videotape. The finished tape shall be continuous over the length of the sewer between two manholes, or as specified by the Construction Engineer.

The newly installed pipe shall be visibly free of defects, which may affect the integrity or strength of the pipe. If in the opinion of the construction Engineer, such defects exist, the pipe shall be repaired or replaced at the expense of the Contractor.

Any pipe section with a gash, blister, abrasion, nick, scar, or other deleterious fault greater in depth than ten percent (10%) of the wall thickness shall not be used and must be removed from the site.

All testing shall be considered incidental to Bid Item 90031.

### **CCTV INSPECTIONS**

The Contractor shall perform post installation internal television inspections upon completion of the project. The videotape of each sewer line reach shall include audio description and printed stationing of service lateral locations. Personnel trained to locate and identify breaks, obstacles, and service connections by closed circuit color television shall perform all such inspections. . The Contractor shall repair all defects at no additional cost to the City.

Post construction videotapes will be submitted to City Engineering for review prior to final payment. Should any portion of the inspection tapes be of inadequate quality or coverage, as determined by the Construction Engineer, the Contractor will re-inspect the unacceptable portion at no additional expense to the City. All original videotapes will become, and remain, the property of City Engineering. The Contractor may retain a second copy.

CCTV inspections shall be considered incidental to the price of pipe sliplining.

### **AIR TEST**

The pipe shall be tested with low pressure air in accordance with ASTM C828. Tests shall be made in the presence of the Contractor and the Engineer. If the pipe fails the air test, the Contractor shall locate the source(s) of the leak and repair the defect(s). The pipe shall then be retested until a satisfactory result is obtained. Despite any previous testing, any leaks developed before the end of the 1-year guarantee period shall be expeditiously repaired by the Contractor at no expense to the City.

**BID ITEM 50353 - SANITARY SEWER LATERAL (SDR-35 & SDR-26)**

The majority of the sanitary sewer laterals were located and surveyed prior to design. Laterals that were not located are shown per City records.

Where the existing sanitary sewer laterals are being extended to connect to the new sanitary sewer main (being installed in a different location as the existing main), pipe plugs shall be required to plug the existing sanitary sewer main on both sides of the old lateral location. The pipe plugs shall be considered incidental to the bid price for SANITARY SEWER LATERAL. All work associated with this bid item shall comply with Article 503 of the Standard Specifications.

Per the City of Madison Standard Specifications for sanitary sewer lateral construction on street reconstruction projects, Contractors are encouraged to begin installation of sanitary lateral pipe at the proposed sewer main. If Contractor starts excavation for the lateral at the property line, it shall be at the Contractor's risk. No Utility Line Openings (ULOs) will be granted for the inability to locate the sanitary lateral at the property line. Contractors are encouraged to have a locator device on-site if they intend to start laying lateral pipe at the property line. Each sanitary lateral shall have a maximum of 4 sidewalk squares removed and replaced and no additional compensation shall be awarded for beyond this amount.

This bid item shall include the installation of both SDR-35 & SDR-26 pipe types. No additional compensation will be granted for the installation of SDR-26 pipe.

Proposed sanitary lateral locations near trees are subject to change based upon data obtained in the field and property owner involvement. Excavation near trees shall comply with Article 107.13 of the Standard Specifications. If five feet of separation from the tree to the excavation cannot be maintained, lateral replacement shall stop at the curb.

**BID ITEM 50390 – SEWER ELECTRONIC MARKERS**

With regard to the City of Madison Standard Specifications for Public Works Construction 2011 Edition Section 503.3(c), each sanitary lateral shall have a minimum of two (2) electronic markers with the City providing the Contractor with the required number of electronic markers. For sanitary laterals, which only include the installation of a wye, a marker ball shall be installed directly above the wye connection to the main.

**SECTION 701 PROVISIONS FOR WATER INSTALLATION AND ABANDONMENT**

This project consists of furnishing and installing 8-inch ductile iron water main on South Ingersoll Street from Jenifer Street to Rutledge Street and on Rutledge Street from South Ingersoll Street to South Few Street. The project includes short sections of 10-inch and 12-inch water main in Spaight Street at its intersection with Ingersoll Street. The project also includes abandoning the existing water main within the project limits including water valves, valve access structures and hydrants.

Once the new systems have passed the pressure and water quality tests, cut off, extend as necessary, and reconnect the existing water service laterals to the new water mains unless the service is to be abandoned. All services that may require relocation due to conflicts with trees or any other issue must be authorized and the new location approved in advance by the Water Utility inspector. Any broken curb stops, buried curb boxes or otherwise dysfunctional service components must be approved for adjustment, removal and/or replacement by the Water Utility inspector in advance of any work being performed.

Take all necessary precautions to protect the existing Madison Water Utility system and ensure its proper functioning during construction. Note that some of the existing water main dates back to the 1880's and

early 1900's. Take all necessary precautions to protect the existing 4-inch steel gas main at the southwest corner of Rutledge and Ingersoll during the installation of water main. Note that there may be abandoned gas main at this location and any required removal shall be incidental to water main installation.

View the sites prior to bidding and become familiar with existing conditions and utilities.

## **SECTION 702 MATERIALS**

### **SECTION 702.2 VALVES AND VALVE BOXES**

The AFC Series 2500 is an acceptable model gate valve for this project.

Furnish all materials, labor and equipment necessary to complete this project except the tapping sleeves, tapping valves and tapping valve boxes. Water Utility will furnish the tapping sleeves, tapping valves, tapping valve boxes, and the crew to perform the taps.

## **SECTION 703 CONSTRUCTION METHODS**

Perform all work in accordance with these provisions and the City of Madison Standard Specifications adopted March 1, 2011. Keep all valves accessible and functioning throughout the duration of the work or directed otherwise by the Water Utility representative.

### **WATER UTILITY GENERAL NOTES FOR SPECIFIC WORK:**

- |       |   |
|-------|---|
| WN1   | Replace the existing lead service with a new copper service.  |
| WN2   | Extend and reconnect the existing copper service to the new water main.   |
| WN3   | Existing service to be abandoned when water main is cut-off.  |
| WN4   | Disconnect service from the old water main and reconnect the existing copper water service lateral to the new water main. |
| WN5   | Relocate the existing fire hydrant.   |
| WN6   | Abandon water valve access structure.   |
| WN7   | Furnish and install the new top section for the water access structure.   |
| WN8   | Abandon the valve box.  |
| WN9   | Furnish the ditch, compaction and all materials and labor for the installation of new service lateral.                    |
| WN10  | Remove and salvage existing hydrant.  |
| WN11  | Replace the existing copper service with a new copper service.  |
| WN20+ | See Overall Water Plan Sheet W-1 for connection point isolation and water shut-off notification information.              |

**BID ITEM 90001 – INTRODUCTION OF CITY RESIDENTS INTO THE CONSTRUCTION WORKFORCE THROUGH THE EMPLOYMENT OF TWO (2) CONSTRUCTION CRAFT LABOR APPRENTICES**

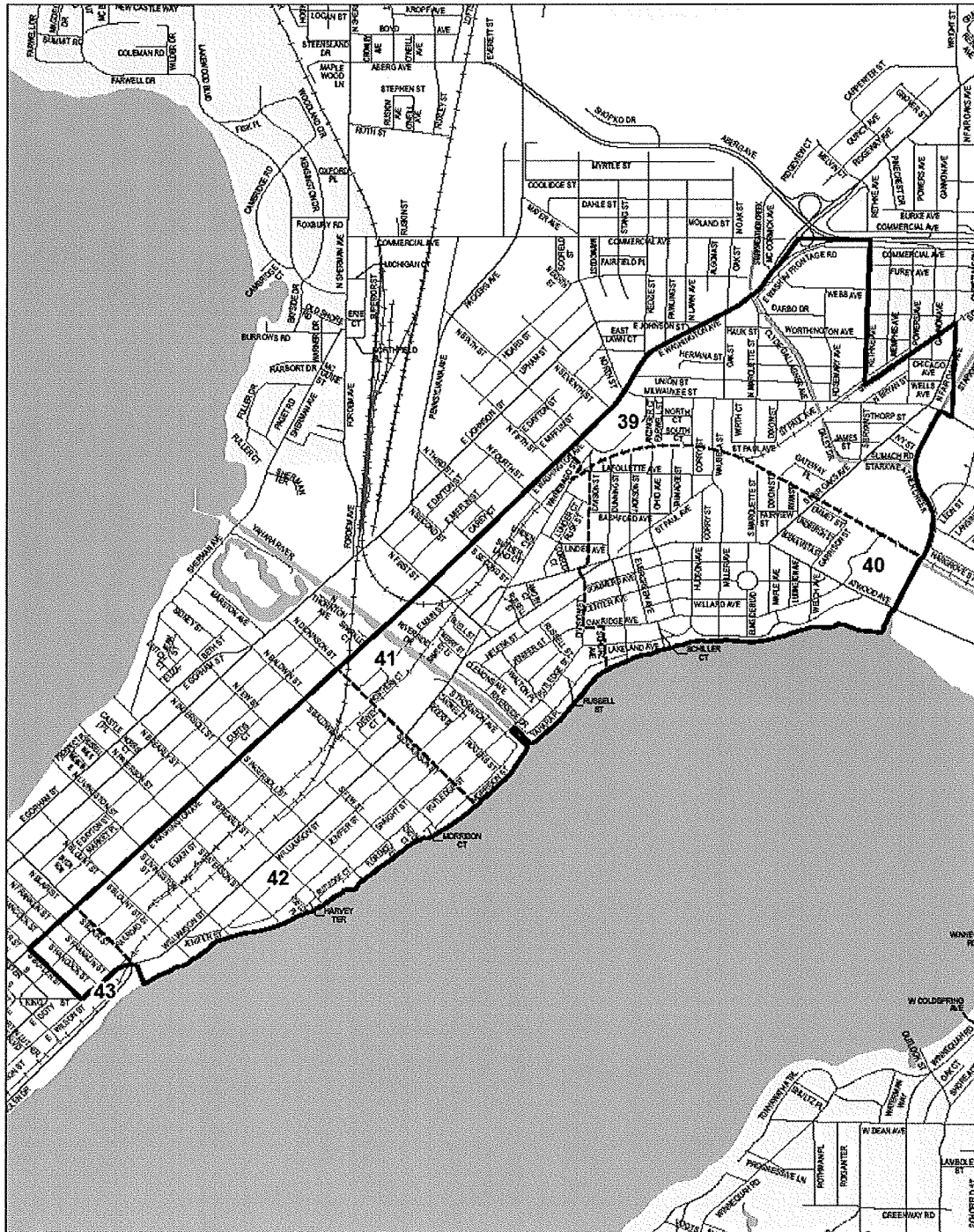
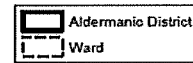
The City of Madison has determined that this contract would advance the goals of the City through the introduction of City residents into the construction workforce. To accomplish that goal, the City is working to provide Construction Craft Laborer Apprentices to the Contractor for this project. In addition to the Contractor's regular workforce, the Contractor or the Contractor's subcontractors shall establish a goal of employing at least two (2) City of Madison residents *within Aldermanic District #6* as Construction Craft Laborer Apprentices for a total of 480 hours. The Contractor or Contractor's subcontractors also shall make a good faith effort to find additional jobs for City of Madison residents beyond the two (2) specified above, consistent with other requirements. The Contractor shall coordinate the hiring of apprentices through the Skilled Trades Apprentice Readiness Training program. Contact Mary Watrud, Program Coordinator, at (608) 628-3118.

The unit price bid for this item of work is based upon the wage of a Construction Craft Laborer Apprentice multiplied by the 1.85 full cost factor. Payment shall be based upon the actual hours worked by the Apprentices on this contract and other City of Madison let projects, when work on this project is not available, undertaken by the Contractor that provides the apprentices with work consistent with the apprenticeship and for classroom training. The work on other projects and classroom shall be documented on the payrolls submitted for the project.

# City of Madison Aldermanic District 6 and Wards

Effective January 1, 2012

Prepared by City of Madison Planning Division on 1/5/2012





**BID ITEM 90002 – SEEDING – WISDOT TYPE 30**

Seeding north of the cul-de-sac on South Ingersoll Street shall be Wisconsin State Department of Transportation seed mixture “Type 30”. All other seeding specifications shall follow the City of Madison Standard Specifications for Public Works Construction.

**BID ITEM 90030 - RECONSTRUCT CATCH BASIN**

**DESCRIPTION**

Work under this item shall include removing the roof and any adjustment from an existing 5’x7’ CATCH BASIN, lowering the walls up to eight (8) inches, constructing a new roof, to accommodate both a standard R-1550-0054 City of Madison SAS casting and R-3067-7004 (both castings included as part of this item), and installation of the new castings to the proposed grade. The new roof shall be constructed to be in compliance with the roof detail for sewer access structures in the Standard Specifications for Public Works Construction. This item includes all materials, incidentals, and labor required to complete the work.

**METHOD OF MEASUREMENT**

Reconstruct CATCH BASIN shall be measured as each structure reconstruction is complete.

**BASIS OF PAYMENT**

Reconstruct CATCH BASIN shall be measured as above and paid at the contract price which shall be full compensation for all work, materials, and incidentals to complete the work as outlined in the description.

**BID ITEM 90031 – SLIPLINE 24” HDPE PIPE**

**DESCRIPTION**

Work under this item shall include slipline installation of 24” diameter (inside diameter) storm sewer by push method in accordance with Section 510 of these specifications. Work shall include all pipe and materials necessary to complete the slipline installation. There is limited (no equipment) access at the downstream of the pipe. Incidental to this bid item is the removal and rearrangement of the existing rocks by the downstream of the pipe.

**METHOD OF MEASUREMENT**

Slipline 24” HDPE PIPE shall be measure by the lineal foot measured from the center of the sewer structure. No additional compensation shall be granted for HDPE pipe that is installed with the access pit to initiate the sliplining process.

**BASIS OF PAYMENT**

Slipline 24” HDPE PIPE shall be paid for at the contract price for work as described and measured above including all work, materials, labor and incidentals required to complete the work set forth in the description.

**BID ITEM 90032 – PROVIDE & INSTALL INLET PROTECTION TYPE D HYBRID**

**DESCRIPTION**

Work under this item shall include provision and installation of inlet protection measures at the locations shown on the Plans in accord with Inlet Protection Type D Hybrid Standard Detail Drawing, or in locations selected by the Field Engineer. The Standard Detail Drawing for Inlet Protection Type D Hybrid is included at the end of these special provisions.

**METHOD OF MEASUREMENT**

Inlet Protection Type D Hybrid shall be measured as a complete unit as installed in the field.

**BASIS OF PAYMENT**

Inlet Protection Type D Hybrid shall be measured as described above and shall be paid for at the contract price which shall be full compensation for all work, materials, labor, and incidentals required to complete the work as set forth in the description.

**BID ITEM 90033 – MAINTAIN INLET PROTECTION TYPE D HYBRID**

**DESCRIPTION**

Work under this item shall include maintenance of inlet protection TYPE D HYBRID at locations throughout the project. This work shall include but not be limited to removal of any sediments collected on the erosion fabric, disposal or reuse of the sediments at a location provided by the Contractor (this location shall be stable and have sufficient erosion control), cleaning of the fabric, or replacement of the fabric with a new insert while the existing material is being cleaned off-site.

**METHOD OF MEASUREMENT**

Maintain Inlet Protection Type D HYBRID shall be measured as each inlet is maintained in the field.

**BASIS OF PAYMENT**

Maintain Inlet Protection Type D HYBRID shall be measured as described above and shall be paid for at the contract price which shall be full compensation for all work, materials, labor, and incidentals required to complete the work as set forth in the description.

**BID ITEM 90034 – REMOVE INLET PROTECTION TYPE D HYBRID**

**DESCRIPTION**

Work under this item shall include removal of inlet protection TYPE D HYBRID at locations throughout the project. This work shall include but not be limited to removal of any accumulated sediments collected on the erosion fabric, disposal or reuse of the sediments at a location provided by the Contractor (this location shall be stable and have sufficient erosion control), removal of the inlet protection basket/fabric/frame and disposal of this material and cleaning of any sediment that exists in the storm structure where the material is installed.

## **METHOD OF MEASUREMENT**

Remove Inlet Protection Type D Hybrid shall be measured as each unit as inlet protection is removed, properly disposed off site, and any remaining accumulated sediments are removed from the inlet by the contractor.

## **BASIS OF PAYMENT**

Remove Inlet Protection Type D Modified shall be measured as described above and shall be paid for at the contract price which shall be full compensation for all work, materials, labor, and incidentals required to complete the work as set forth in the description.

## **BID ITEM 90035 – PRIVATE STORM SEWER RECONNECT**

### **DESCRIPTION**

Work under this bid item shall include all work necessary to reconnect private storm sewer pipes to newly constructed storm sewer inlets or other structures. This bid item shall include all materials necessary to make the private storm sewer connection, including pipe and couplings as necessary. Work under this bid item shall also include all work, materials, and incidentals necessary to reroute, from the property line, the private storm line to the new or existing storm sewer structure. Pipe bedding, select backfill, and any surface repairs required by the realignment, shall all be considered incidental to this bid item. All pipe used in the reconnection of private storm sewer drains shall be either PVC or RCP material, and shall be similar in size to the existing private storm pipe and shall be incidental to the work. Under no circumstances shall an existing private storm sewer pipe be reduced in size. The Contractor shall not abandon any private storm sewer pipe without definitive evidence that the pipe is abandoned. Acceptable evidence includes dye testing, sonding, the use of camera equipment, or building plans provided by the current property owner showing pipe abandonment.

At time of bidding, the locations of private connections are unknown. Locations will be determined by dye test, by City crews, prior to the preconstruction meeting and plans will be revised accordingly.

### **METHOD OF MEASUREMENT**

Private Storm Sewer Reconnect shall be measured on a per unit basis for each reconnection completed in the field.

### **BASIS OF PAYMENT**

Private Storm Sewer Reconnect shall be paid for at the contract price, which shall be full compensation for all work, materials, and incidentals as outlined in the description.

## **BID ITEM 90036 – RAINGARDEN**

### **DESCRIPTION**

Work under this item shall include: all work (including but not limited to: excavation, removal, and disposal of existing material, provision and placement of engineered material) and materials (including but not limited to castings, pipes, engineered fill and mulch), labor, and incidentals required to construct raingardens meeting the sizes, locations, specifications, and detail drawings contained in this document and in the plan set.

The Contractor shall assume that all raingardens are anticipated to be approximately 10 feet in width and 15 feet in length, but may be larger based on available space. Excavation shall be to approximately 3 feet below grade and engineered fill shall be placed to two feet in depth. This item does not include planting of the raingarden. Planting will be completed by others in during the spring of 2012.

The City reserves the right to add or remove raingardens from the contract. The Contractor shall not be compensated in any matter for the removal or addition of raingardens from the contract. The addition of raingardens shall be consistent with the already designed gardens as indicated in the plan set.

Specifically included are the following:

- 1) Excavation, removal and disposal off site, at a location provided by the Contractor, of existing material to the bottom of grade shown on the detail drawings.
- 2) Standard excavation shall begin at the outer polygon shown on the detail drawings and shall be on a continuous slope from the existing elevation to the finish horizontal location and elevation as depicted by the inner polygon. This inner polygon represents the bottom (or effective infiltration area of the raingarden). Excavation below finish grade and replacement of existing material with engineered fill is required only below the inner polygon. Excavation below finish grade inside the inner polygon shall consist of two (2) feet of excavation below the finish grade shown on the detail drawings. This volume shall then be filled with engineered fill (meeting the specifications below) to the finish grade noted on the detail. CLASS II Type B - Coconut blanket shall be added above the finish elevations noted on the details.
- 3) All ULO's needed to construct each raingarden; there are utilities (gas, sanitary & water) near or in all of these features. All work necessary to locate and work around these utilities is included in the price for these items. If any utility is located within the excavation depths of the clear stone or engineered fill, the contractor shall excavate with caution and use proper construction methods. The contractor shall install Rock Shield around the existing utility to provide protection and shall be included in this item.
- 4) Construction of a storm inlet to the raingarden. Inlet to the raingarden shall be a Neenah casting R-3268 poured into the curb with a 6" PVC pipe draining from the casting into the raingarden. This inlet system requires the curb flow-line at the casting be depressed 3" to force water from the curb to enter the casting and move toward the raingarden. The curb flow-line depression shall be completed over three (3) feet on either side of the casting and the additional handwork associated with the curb pour is included in with this bid item. Upon placement of the PVC pipe into the raingarden, the pipe shall be capped (temporarily – no glue) such that water does not enter the system.
- 5) Provision of all required engineered fill as called out on the typical section including, compost, topsoil, sand, gravel, and coconut blanket to be placed upon complete construction of the garden. Each of these materials shall meet the specifications below.
- 6) All finishing work required to provide a finished engineered soil layer prior to placement of mulch.
- 7) Mulch – The work shall consist of furnishing and installing three (3") inches of double shredded hardwood mulch. Mulch shall only be installed once the garden has been brought to finish grade. The 3" of mulch is to be added on top of engineered fill and above the finish grade noted in the plan set.

**ENGINEERED SOIL AND SAND STORAGE LAYER SHALL MEET THE FOLLOWING:**

- 1) The planting mixture shall consist of a mixture of sand, compost and topsoil. The mix shall be designed to approximate the following percentages, by volume.

Engineered Soil Component	% Composition by volume
Sand	45-55%
Topsoil	10-15%
Compost	30%-50%

- 2) The sand component shall at a minimum meet the following criteria:
- a) Crushed & screened sandstone
  - b) 100% passing a #4 sieve
  - c) Maximum of 5% passing a #200 sieve
- 3) **The topsoil component shall be a USDA classified sandy loam, loamy sand or loam texture. The topsoil component textural class shall be verified by a laboratory analysis or a professional acceptable to the jurisdiction having authority. The topsoil shall be pulverized prior to mixing with the other materials. No soil particle size over 1” diameter shall be accepted and will require removal of all material from the site and a new mix being provided.**
- 4) The compost component shall meet the requirements of Wisconsin Department of Natural Resources Specification S100 – Compost. These requirements are listed below
- a. Particle Size – 98% of the compost shall pass through a 0.75-inch screen.
  - b. Physical Contaminants – Less than 1% combined glass, metal and plastic.
  - c. Organic Matter/Ash Content – At least 40% organic matter; less than 60% ash content.
  - d. Carbon to Nitrogen Ratio – 10-20:1 C:N ratio.
  - e. pH – Between 6 and 8.
  - f. Soluble Salts – Electrical conductivity below 10 dS m<sup>-1</sup> (mmhos cm<sup>-1</sup>)
  - g. Moisture Content – Between 35% and 50% by weight.
  - h. Maturity – The compost shall be resistant to further decomposition and free of compounds, such as ammonia and organic acids, in concentrations toxic to plant growth.
  - i. Residual Seeds & Pathogens – Pathogens and noxious seeds shall be minimized.
  - j. Pathogens – The compost shall meet the Class A requirements for pathogens as specified in s. NR 204.07(6)(a), Wis. Adm. Code.
  - k. Other Chemical Contaminants – The compost shall meet the high quality pollutant concentrations as specified in s. NR 204.07(5)(c), Wis. Adm. Code.
- 5) The engineered soil mix shall be free of rocks, stumps, roots, brush or **other material over 1 inch in diameter**. No other materials shall be mixed with the planting soil that may be harmful to plant growth or prove a hindrance to planting or maintenance.

**METHOD OF MEASUREMENT**

Raingardens shall be measured as EACH complete garden installed in the field.

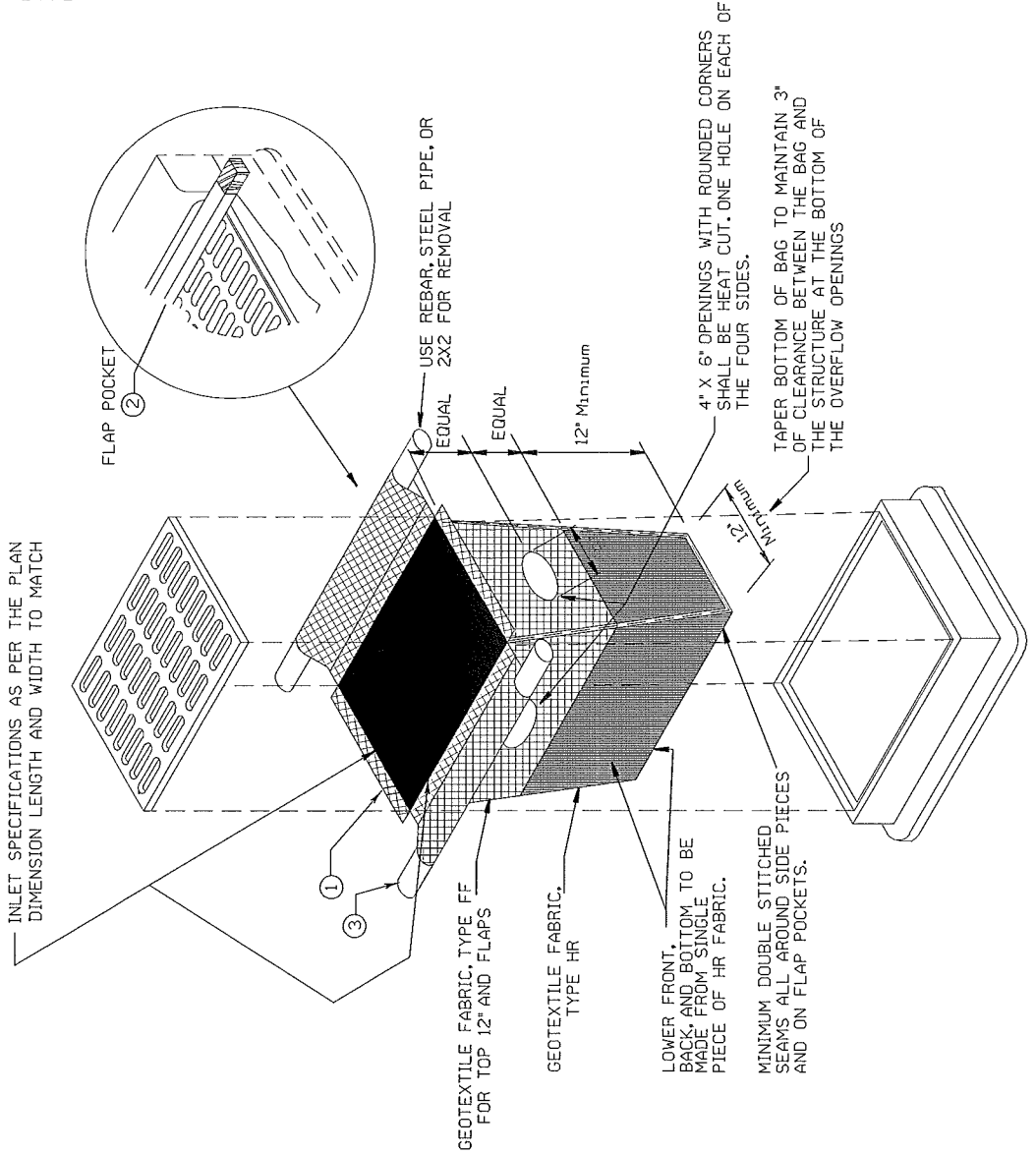
**BASIS OF PAYMENT**

Raingardens shall be measured as described above which shall be full compensation for all work, materials and incidentals to complete the work as described above.

**GENERAL NOTES**

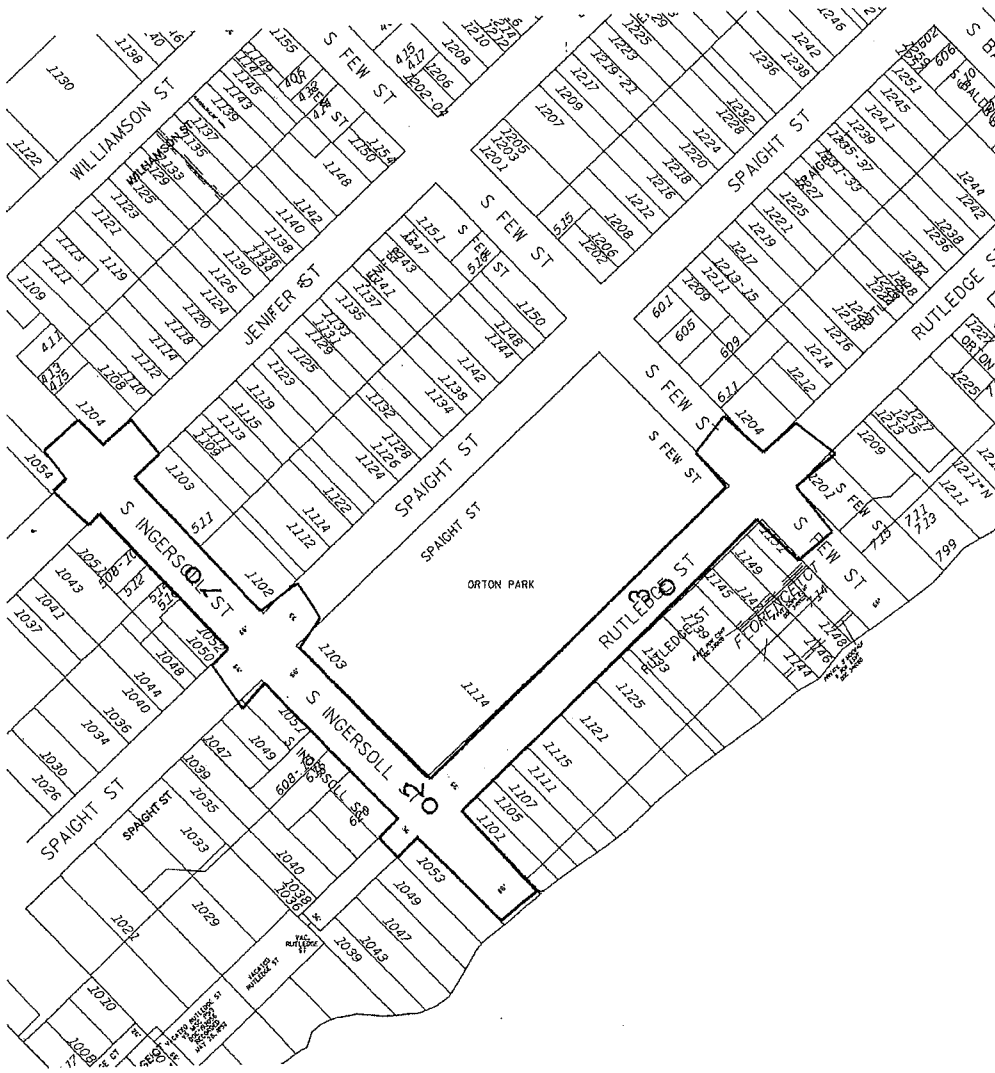
CLEANING SHALL BE REQUIRED WHEN SEDIMENT OR STANDING WATER IS WITHIN 6" OF THE OVERFLOW HOLES OR AS DIRECTED BY THE CONSTRUCTION ENGINEER. WHEN REMOVING OR MAINTAINING INLET PROTECTION, CARE SHALL BE TAKEN SO THAT THE SEDIMENT TRAPPED ON THE GEOTEXTILE FABRIC DOES NOT FALL INTO THE INLET. ANY MATERIAL FALLING INTO THE INLET SHALL BE REMOVED IMMEDIATELY. THE INSTALLED BAG SHALL HAVE A MINIMUM SIDE CLEARANCE BETWEEN THE INLET WALLS AND THE BAG, MEASURED AT THE BOTTOM OF THE OVERFLOW HOLES, OF 3".

- ① SIDE FLAPS SHALL BE A MAXIMUM OF 2' LONG, FOLD THE FABRIC OVER AND REINFORCE WITH MULTIPLE STITCHES.
- ② FLAP POCKETS SHALL BE LARGE ENOUGH TO ACCEPT WOOD 2X2. THE 2X2 SHALL BE INSTALLED IN THE REAR FLAP AND SHALL NOT BLOCK THE TOP HALF OF THE CURB FACE OPENING.
- ③ FRONT LIFTING FLAP IS TO BE USED WHEN REMOVING AND MAINTAINING FILTER BAG.



CAN BE INSTALLED IN ANY INLET TYPE WITH OR WITHOUT A CURB BOX.

CITY OF MADISON ENGINEERING DIVISION
INLET PROTECTION TYPE D HYBRID
STANDARD DETAIL DRAWING 1.11



Notes

1. Soil borings performed by Badger State Drilling in September 2011

Legend

○ Denotes Boring Location (approximate)



**SOIL BORING LOCATION PLAN**  
**South Ingersoll and Rutledge Streets**  
**Madison, Wisconsin**

CCC, Inc.

APPD: MNS      Date: 10/11      C11054-31

DWN: -





### LOG OF TEST BORING

Project South Ingersoll & Rutledge St.  
Ingersoll: 60'NW of Spaight, 12'SW of CL  
 Location Madison, Wisconsin

Boring No. 1  
 Surface Elevation (ft) 94.5\*  
 Job No. C11054-27  
 Sheet 1 of 1

2921 Perry Street, Madison, WI 53713 (608) 288-4100, FAX (608) 288-7887

SAMPLE					VISUAL CLASSIFICATION and Remarks	SOIL PROPERTIES				
No.	TYPE	Rec (in.)	Moist	N		Depth (ft)	qu (qa) (tsf)	W	LL	PL
					0	3 in. Asphalt Pavement/8.5 in. Base Course				
1AS	V	0	M	7	7	Stiff, Brown Sandy Lean CLAY (CL)				
2	V	12	M	5	12	(1.75)				
3	V	10	M	17	17	Medium Dense, Brown Fine to Medium SAND, Some Silt and Gravel, Scattered Cobbles and Boulders (SM)				
4	V	14	M	22	22					
5	V	18	M	24	24					
					15	End Boring at 15 ft				
					20	Borehole backfilled with bentonite chips				
					20	*Elevation determined using an assumed datum of 100.0 ft referencing the top nut of a hydrant situated along Spaight at the intersection with Ingersoll.				

WATER LEVEL OBSERVATIONS	GENERAL NOTES
While Drilling <u>∇</u> <u>NW</u> Upon Completion of Drilling <u>NW</u> Time After Drilling _____ Depth to Water _____ Depth to Cave in _____	Start <u>9/19/11</u> End <u>9/19/11</u> Driller <u>Badger</u> Chief <u>RM</u> Rig <u>CME-55</u> Logger <u>KD</u> Editor <u>ESF</u> Drill Method <u>2 1/4" HSA</u>
The stratification lines represent the approximate boundary between soil types and the transition may be gradual.	



### LOG OF TEST BORING

Project South Ingersoll & Rutledge St.  
Ingersoll: 75'NW of Rutledge, 10'NE of CL  
 Location Madison, Wisconsin

Boring No. 2  
 Surface Elevation (ft) 98.5\*  
 Job No. C11054-27  
 Sheet 1 of 1

2921 Perry Street, Madison, WI 53713 (608) 288-4100, FAX (608) 288-7887

SAMPLE					VISUAL CLASSIFICATION and Remarks	SOIL PROPERTIES				
No.	DEPTH (ft)	Rec (in.)	Moist	N		Depth (ft)	qu (qa) (tsf)	W	LL	PL
					4 in. Asphalt Pavement/6 in. Base Course					
1		6	M	16	Medium Dense, Brown Fine to Medium SAND, Some Silt and Gravel, Scattered Cobbles and Boulders (SM)					
2		12	M	15						
3		10	M	21						
4		16	M	29						
5		18	M	28						
					End Boring Boring at 15 ft					
					Borehole backfilled with bentonite chips					
					*Elevation determined using an assumed datum of 100.0 ft referencing the top nut of a hydrant situated along Spaight at the intersection with Ingersoll.					

WATER LEVEL OBSERVATIONS					GENERAL NOTES					
While Drilling	<input checked="" type="checkbox"/>	NW	Upon Completion of Drilling	<input type="checkbox"/>	NW	Start	9/19/11	End	9/19/11	
Time After Drilling						Driller	Badger	Chief	RM	Rig CME-55
Depth to Water						Logger	KD	Editor	ESF	
Depth to Cave in						Drill Method	2 1/4" HSA			
<small>The stratification lines represent the approximate boundary between soil types and the transition may be gradual.</small>										



### LOG OF TEST BORING

Project South Ingersoll & Rutledge St.  
Rutledge: 235'SW of Few, Near CL  
 Location Madison, Wisconsin

Boring No. 3  
 Surface Elevation (ft) 88.1\*  
 Job No. C11054-27  
 Sheet 1 of 1

2921 Perry Street, Madison, WI 53713 (608) 288-4100, FAX (608) 288-7887

SAMPLE					VISUAL CLASSIFICATION and Remarks	SOIL PROPERTIES				
No.	TYPE	Rec (in.)	Moist	N		Depth (ft)	qu (qa) (tsf)	W	LL	PL
					3.5 in. Asphalt Pavement/3 in. Base Course					
1AS		0	M	16	FILL: Brown Clay with Sand and Gravel					
2		12	M	17	Very Stiff, Reddish-Brown Sandy Lean CLAY, Some Gravel (CL)	(2.5)				
3		8	M	55	Dense, to Very Dense, Brown Fine to Medium SAND, Some Silt and Gravel, Scattered Cobbles and Boulders (SM)					
4		16	M	30						
5		18	M	74						
					End Boring at 15 ft					
					Borehole backfilled with bentonite chips					
					*Elevation determined using an assumed datum of 100.0 ft referencing the top nut of a hydrant situated along Spaight at the intersection with Ingersoll.					

#### WATER LEVEL OBSERVATIONS

#### GENERAL NOTES

While Drilling  NW Upon Completion of Drilling      NW  
 Time After Drilling \_\_\_\_\_  
 Depth to Water \_\_\_\_\_  
 Depth to Cave in \_\_\_\_\_

Start 9/15/11 End 9/15/11  
 Driller Badger Chief RM Rig CME-55  
 Logger KD Editor ESF  
 Drill Method 2 1/4" HSA

The stratification lines represent the approximate boundary between soil types and the transition may be gradual.

**SECTION E: PROPOSAL**  
**SOUTH INGERSOLL STREET & RUTLEDGE STREET ASSESSMENT DISTRICT –**  
**2012**  
**CONTRACT NO. 6803**

Bidder must state a Unit Price and Total Bid for each item. The Total Bid for each item must be the product of quantity, by Unit Price. The Grand Total must be the sum of the Total Bids for the various items. In case of multiplication errors or addition errors, the Grand Total with corrected multiplication and/or addition shall determine the Grand Total bid for each contract. The Unit Price and Total Bid must be entered numerically in the spaces provided. All words and numbers shall be written in ink.

1. The undersigned having familiarized himself/herself with the Contract documents, including Advertisement for Bids, Instructions to Bidders, Form of Proposal, City of Madison Standard Specifications for Public Works Construction - 2011 Edition thereto, Form of Agreement, Form of Bond, and Addenda issued and attached to the plans and specifications on file in the office of the City Engineer, hereby proposes to provide and furnish all the labor, materials, tools, and expendable equipment necessary to perform and complete in a workmanlike manner the specified construction on this project for the City of Madison; all in accordance with the plans and specifications as prepared by the City Engineer, including Addenda to the Contract Nos. \_\_\_\_\_ through \_\_\_\_\_ issued thereto, at the prices for said work as contained in this proposal.
2. If awarded the Contract, we will initiate action within seven (7) days after notification or in accordance with the date specified in the contract to begin work and will proceed with diligence to bring the project to full completion within the number of work days allowed in the Contract or by the calendar date stated in the Contract.
3. The undersigned Bidder or Contractor certifies that he/she is not a party to any contract, combination in form of trust or otherwise, or conspiracy in restraint of trade or commerce or any other violation of the anti-trust laws of the State of Wisconsin or of the United States, with respect to this bid or contract or otherwise.
4. Accompanying this Proposal is  Bid Bond or  Certified Check in the amount of \_\_\_\_\_ Dollars (\$ \_\_\_\_\_) or  a Certificate of Biennial Bid Bond as required by the Advertisement for Bids.  
*(IF BID BOND IS USED, IT SHALL BE SUBMITTED ON THE FORMS PROVIDED BY THE CITY. FAILURE TO DO SO MAY RESULT IN REJECTION OF THE BID).*
5. I hereby certify that all statements herein are made on behalf of \_\_\_\_\_  
(name of corporation, partnership, or person submitting bid)  
a corporation organized and existing under the laws of the State of \_\_\_\_\_ a  
partnership consisting of \_\_\_\_\_; an individual trading as \_\_\_\_\_; of  
the City of \_\_\_\_\_; State of \_\_\_\_\_; that I have examined and carefully prepared this  
Proposal, from the plans and specifications and have checked the same in detail before submitting  
this Proposal; that I have fully authority to make such statements and submit this Proposal in (its,  
their) behalf; and that the said statements are true and correct.

\_\_\_\_\_  
SIGNATURE

\_\_\_\_\_  
TITLE, IF ANY

Sworn and subscribed to before me this  
\_\_\_\_\_ day of \_\_\_\_\_, 20\_\_\_\_\_

\_\_\_\_\_  
(Notary Public or other officer authorized to administer oaths)

My Commission Expires \_\_\_\_\_

Bidders shall not add any conditions or qualifying statements to this Proposal.

**SOUTH INGERSOLL STREET & RUTLEDGE STREET ASSESSMENT DISTRICT – 2012  
CONTRACT NO. 6803**

State of Wisconsin  
Department of Workforce Development  
Equal Rights Division  
Labor Standards Bureau

**Disclosure of Ownership**

**Notice required under Section 15.04(1)(m), Wisconsin Statutes.** The statutory authority for the use of this form is prescribed in Sections 66.0903(12)(d) and 103.49(7)(d), Wisconsin Statutes. The use of this form is mandatory. The penalty for failing to complete this form is prescribed in Section 103.005(12), Wisconsin Statutes. Personal information you provide may be used for secondary purposes.

- (1) On the date a contractor submits a bid to or completes negotiations with a state agency or local governmental unit, on a project subject to Section 66.0903 or 103.49, Wisconsin Statutes, the contractor shall disclose to such state agency or local governmental unit the name of any "other construction business", which the contractor, or a shareholder, officer or partner of the contractor, owns or has owned within the preceding three (3) years.
- (2) The term "other construction business" means any business engaged in the erection, construction, remodeling, repairing, demolition, altering or painting and decorating of buildings, structures or facilities. It also means any business engaged in supplying mineral aggregate, or hauling excavated material or spoil as provided by Sections 66.0903(3), 103.49(2) and 103.50(2), Wisconsin Statutes.
- (3) This form must **ONLY** be filed, with the state agency or local governmental unit that will be awarding the contract, if **both (A) and (B) are met.**
  - (A) The contractor, or a shareholder, officer or partner of the contractor:
    - (1) Owns at least a 25% interest in the "other construction business", indicated below, on the date the contractor submits a bid or completes negotiations.
    - (2) Or has owned at least a 25% interest in the "other construction business" at any time within the preceding three (3) years.
  - (B) The Wisconsin Department of Workforce Development (DWD) has determined that the "other construction business" has failed to pay the prevailing wage rate or time and one-half the required hourly basic rate of pay, for hours worked in excess of the prevailing hours of labor, to any employee at any time within the preceding three (3) years.

**Other Construction Business**

Name of Business			
Street Address or P O Box	City	State	Zip Code
Name of Business			
Street Address or P O Box	City	State	Zip Code
Name of Business			
Street Address or P O Box	City	State	Zip Code
<b>I hereby state under penalty of perjury that the information, contained in this document, is true and accurate according to my knowledge and belief.</b>			
Print the Name of Authorized Officer			
Signature of Authorized Officer		Date Signed	
Name of Corporation, Partnership or Sole Proprietorship			
Street Address or P O Box	City	State	Zip Code

**If you have any questions call (608) 266-0028**

ERD-7777-E (R. 09/2003)

**SOUTH INGERSOLL STREET & RUTLEDGE STREET ASSESSMENT DISTRICT –  
2012  
CONTRACT NO. 6803**

**Best Value Contracting**

1. The Contractor shall indicate the non-apprenticeable trades used on this contract.

---

---

---

---

---

---

---

---

2. Some Contractors are exempt due to the size of the work force. Apprenticeable trades are those trades considered apprenticeable by the State of Wisconsin.

Check Here if the Contractor has a total skilled work force of four or less individuals in all apprenticeable trades combined. This contractor is exempt from Best Value Contracting.

3. The Contractor shall indicate on page E-4 which apprenticeable trades are to be used on this Contract and shall indicate by checking the appropriate box for the trades used, how the contractor will comply with Madison General Ordinance 33.07(7).

Legend

Number of Journeyworkers	The Contractor shall indicated for trades to be used on this Contract only, the number of journeyworkers that the Contractor has employed company wide.
W-ATT	The Contractor is an active trade trainer in the State of Wisconsin for the trade indicated.
US-ATT	The Contractor is an active trade trainer in an apprenticeship program approved by the U.S. Department of Labor or another state apprenticeship agency in the trade indicated.
SB-ATT	The Contractor shall become an active trade trainer prior to beginning work on the Contract in the trade indicated.

The Contractor has reviewed the list on page E-4 and shall not use any apprenticeable trades on this project.

The Contractor has reviewed this list on E-4 and has checked the appropriate box by each apprenticeable trade to be used on the project.

**SOUTH INGERSOLL STREET & RUTLEDGE STREET ASSESSMENT DISTRICT –  
2012  
CONTRACT NO. 6803**

**Apprenticeable Trades**

Check the box in the column "Trade Used on This Project" for each apprenticeable trades used on this project. For those trades used on the project indicated the number of journeymen that are employed company wide and check a box to the right of the trade as to how the Contractor will comply MGO 33.07(7). Refer to the legend on page E-3 for the meaning associated with each heading. The Contractor must check one of the boxes on the right for each apprenticeable trade used and checked on the left.

Trade Used on Contract	Apprenticeable Trades	Number of Journeymen	W-ATT	US-ATT	SB-ATT
<input type="checkbox"/>	Bricklayer		<input type="checkbox"/>	<input type="checkbox"/>	<input type="checkbox"/>
<input type="checkbox"/>	Carpenter		<input type="checkbox"/>	<input type="checkbox"/>	<input type="checkbox"/>
<input type="checkbox"/>	Cement Mason / Concrete Finisher		<input type="checkbox"/>	<input type="checkbox"/>	<input type="checkbox"/>
<input type="checkbox"/>	Cement Mason (Heavy Highway)		<input type="checkbox"/>	<input type="checkbox"/>	<input type="checkbox"/>
<input type="checkbox"/>	Construction Craft Laborer		<input type="checkbox"/>	<input type="checkbox"/>	<input type="checkbox"/>
<input type="checkbox"/>	Data Communication Installer		<input type="checkbox"/>	<input type="checkbox"/>	<input type="checkbox"/>
<input type="checkbox"/>	Electrician		<input type="checkbox"/>	<input type="checkbox"/>	<input type="checkbox"/>
<input type="checkbox"/>	Environmental Systems Technician / HVAC Service Tech/HVAC Install / Service		<input type="checkbox"/>	<input type="checkbox"/>	<input type="checkbox"/>
<input type="checkbox"/>	Glazier		<input type="checkbox"/>	<input type="checkbox"/>	<input type="checkbox"/>
<input type="checkbox"/>	Heavy Equipment Operator / Operating Engineer		<input type="checkbox"/>	<input type="checkbox"/>	<input type="checkbox"/>
<input type="checkbox"/>	Insulation Worker (Heat & Frost)		<input type="checkbox"/>	<input type="checkbox"/>	<input type="checkbox"/>
<input type="checkbox"/>	Iron Worker		<input type="checkbox"/>	<input type="checkbox"/>	<input type="checkbox"/>
<input type="checkbox"/>	Iron Worker (Assembler, Metal Bldgs)		<input type="checkbox"/>	<input type="checkbox"/>	<input type="checkbox"/>
<input type="checkbox"/>	Painter & Decorator		<input type="checkbox"/>	<input type="checkbox"/>	<input type="checkbox"/>
<input type="checkbox"/>	Plasterer		<input type="checkbox"/>	<input type="checkbox"/>	<input type="checkbox"/>
<input type="checkbox"/>	Plumber		<input type="checkbox"/>	<input type="checkbox"/>	<input type="checkbox"/>
<input type="checkbox"/>	Residential Electrician		<input type="checkbox"/>	<input type="checkbox"/>	<input type="checkbox"/>
<input type="checkbox"/>	Rofer & Waterproofer		<input type="checkbox"/>	<input type="checkbox"/>	<input type="checkbox"/>
<input type="checkbox"/>	Sheet Metal Worker		<input type="checkbox"/>	<input type="checkbox"/>	<input type="checkbox"/>
<input type="checkbox"/>	Sprinklerfitter		<input type="checkbox"/>	<input type="checkbox"/>	<input type="checkbox"/>
<input type="checkbox"/>	Steamfitter		<input type="checkbox"/>	<input type="checkbox"/>	<input type="checkbox"/>
<input type="checkbox"/>	Steamfitter (Refrigeration)		<input type="checkbox"/>	<input type="checkbox"/>	<input type="checkbox"/>
<input type="checkbox"/>	Steamfitter (Service)		<input type="checkbox"/>	<input type="checkbox"/>	<input type="checkbox"/>
<input type="checkbox"/>	Taper & Finisher		<input type="checkbox"/>	<input type="checkbox"/>	<input type="checkbox"/>
<input type="checkbox"/>	Telecommunications (Voice, Data & Video) Installer-Technician		<input type="checkbox"/>	<input type="checkbox"/>	<input type="checkbox"/>
<input type="checkbox"/>	Tile Setter		<input type="checkbox"/>	<input type="checkbox"/>	<input type="checkbox"/>

PROPOSAL

NAME OF BIDDER

SOUTH INGERSOLL STREET AND RUTLEDGE STREET ASSESSMENT DISTRICT - 2012

CONTRACT NO. 6803

ITEM	TYPE OF WORK	ESTIMATED QUANTITIES		UNIT PRICE BID	TOTAL BID
STREET ACCOUNT NO. CS53-58250-810355-00-53W0603					
10701	TRAFFIC CONTROL	1	LUMP SUM		
10801	ROOT CUTTING - CURB & GUTTER	195	L.F.		
10802	ROOT CUTTING - SIDEWALK	100	L.F.		
10911	MOBILIZATION	1	LUMP SUM		
20101	EXCAVATION CUT	2175	C.Y.		
20130	UNDERDRAIN	110	L.F.		
20140	GEOTEXTILE FABRIC TYPE SAS (NON-WOVEN)	500	S.Y.		
20219	BREAKER RUN	1000	TON		
20221	TOPSOIL	2000	S.Y.		
20303	SAWCUT BITUMINOUS PAVEMENT	150	L.F.		
20322	REMOVE CONCRETE CURB & GUTTER	1600	L.F.		
20323	REMOVE CONCRETE SIDEWALK & DRIVE	6400	S.F.		
20324	REMOVE CONCRETE STEPS	125	S.F.		
20401	CLEARING	20	I.D.		
20403	GRUBBING	40	I.D.		
20701	TERRACE SEEDING	1800	S.Y.		
21061	EROSION MATTING, CLASS 1, URBAN TYPE A	200	S.Y.		
30201	TYPE "A" CONCRETE CURB & GUTTER	1475	L.F.		
30203	TYPE "X" CONCRETE CURB & GUTTER	75	L.F.		
30208	HAND FORMED CONCRETE CURB & GUTTER (TREE LOCATIONS)	50	L.F.		
30301	5 INCH CONCRETE SIDEWALK	3730	S.F.		



PROPOSAL

NAME OF BIDDER

SOUTH INGERSOLL STREET AND RUTLEDGE STREET ASSESSMENT DISTRICT - 2012

CONTRACT NO. 6803

ITEM	TYPE OF WORK	ESTIMATED QUANTITIES		UNIT PRICE BID	TOTAL BID
30302	7 INCH CONCRETE SIDEWALK & DRIVE	1675	S.F.		
30340	CURB RAMP DETECTABLE WARNING FIELDS	72	S.F.		
40101	CRUSHED AGGREGATE BASE COURSE, GRADATION NO. 1	1000	TON		
40102	CRUSHED AGGREGATE BASE COURSE, GRADATION NO. 2	2100	TON		
40201	HMA PAVEMENT TYPE E-0.3	925	TON		
40211	TACK COAT	200	GAL		
40231	ASPHALT DRIVE & TERRACE	50	S.Y.		
40301	FULL WIDTH GRINDING	130	S.Y.		
90001	INTRODUCTION OF CITY RESIDENT INTO THE CONSTRUCTION WORKFORCE THROUGH EMPLOYMENT OF TWO (2) CONSTRUCTION CRAFT LABOR APPRENTICES	480	HRS	\$ 37.40	\$ 17,952.00
90002	SEEDING - WISDOT TYPE 30	200	S.Y.		
<b>STREET ACCOUNT NO. CS53-58270-810355-00-53W0603</b>					
20217	CLEAR STONE	280	TON		
21001	EROSION CONTROL PLAN & IMPLEMENTATION	1	LUMP SUM		
21002	EROSION CONTROL INSPECTION	10	EACH		
21011	CONSTRUCTION ENTRANCE	3	EACH		
21012	STREET CONSTRUCTION ENTRANCE BERM	1	EACH		
21013	STREET SWEEPING	1	LUMP SUM		
21017	INLET PROTECTION TYPE D	6	EACH		
21024	SILT SOCK COMPLETE	120	L.F.		
21052	POLYMER STABILIZATION	2500	S.Y.		
50411	12 INCH RCP STORM SEWER PIPE	283	L.F.		

**PROPOSAL**

NAME OF BIDDER

SOUTH INGERSOLL STREET AND RUTLEDGE STREET ASSESSMENT DISTRICT - 2012

CONTRACT NO. 6803

ITEM	TYPE OF WORK	ESTIMATED QUANTITIES		UNIT PRICE BID	TOTAL BID
50741	H INLET	269	EACH		
90032	PROVIDE & INSTALL INLET PROTECTION TYPE D HYBRID	20	EACH		
90033	MAINTAIN INLET PROTECTION TYPE D HYBRID	20	EACH		
90034	REMOVE INLET PROTECTION TYPE D HYBRID	20	EACH		
<b>STORM ACCOUNT NO. ESTM-58270-810381-00-53W0603</b>					
10702	TRAFFIC CONTROL FOR STORM SEWER INSTALLATION	1	LUMP SUM		
10912	MOBILIZATION FOR STORM SEWER	1	LUMP SUM		
20313	REMOVE INLET	3	EACH		
20314	REMOVE PIPE	54	L.F.		
20502	ADJUST CATCHBASIN	1	EACH		
50211	SELECT BACKFILL FOR STORM SEWER	283	T.F		
50792	STORM SEWER TAP	4	EACH		
50801	UTILITY LINE OPENING (ULO)	3	EACH		
90030	RECONSTRUCT CATCH BASIN	1	EACH		
90031	24" HDPE SLIPLINE	161	L.F.		
90035	PRIVATE STORM SEWER RECONNECT	3	EACH		
<b>STORM ACCOUNT NO. ESTM-58270-810515-00-53W0603</b>					
90036	RAINGARDEN	2	EACH		
<b>STORM ACCOUNT NO. ESTM-58270-810551-00-53W0603</b>					
50763	TERRACE INLET TYPE II	1	EACH		
<b>SANITARY ACCOUNT NO. ES01-58275-810332-00-53W0603</b>					
10704	TRAFFIC CONTROL FOR SANITARY SEWER INSTALLATION	1	LUMP SUM		
10914	MOBILIZATION FOR SANITARY SEWER	1	LUMP SUM		

PROPOSAL

NAME OF BIDDER

SOUTH INGERSOLL STREET AND RUTLEDGE STREET ASSESSMENT DISTRICT - 2012

CONTRACT NO. 6803

ITEM	TYPE OF WORK	ESTIMATED QUANTITIES		UNIT PRICE BID	TOTAL BID
20311	REMOVE SAS	3	EACH		
20331	ABANDON SEWER ACCESS STRUCTURE	5	EACH		
20336	PIPE PLUG	40	EACH		
20501	ADJUST SEWER ACCESS STRUCTURE	2	EACH		
50201	ROCK EXCAVATION (UNDISTRIBUTED)	50	CY		
50212	SELECT BACKFILL SANITARY SEWER	1654	TF		
50226	UTILITY TRENCH PATCH TYPE III	40	TF		
50301	8 INCH PVC SANITARY SEWER PIPE (SDR-35 & SDR-26)	1061	LF		
50353	SANITARY SEWER LATERAL (SDR35 & SDR-26)	593	LF		
50354	RECONNECT SANITARY SEWER LATERAL	22	EACH		
50361	WASTEWATER CONTROL	1	EACH		
50390	SEWER ELECTRONIC MARKERS	44	EACH		
50701	4' DIA SAS	6	EACH		
50791	SANITARY SEWER TAP	4	EACH		
50783	INSIDE DROP	2.18	VF		
<b>WATER ACCOUNT NO. EW01-58273-810455-00-53W0603</b>					
10703	TRAFFIC CONTROL FOR WATER MAIN INSTA	1	LUMP SUM		
10913	MOBILIZATION FOR WATER MAIN INSTALLATION	1	LUMP SUM		
50801	UTILITY LINE OPENING (ULO)	1	EACH		
70001	FURNISH AND INSTALL 4 INCH PIPE & FITTING	20	L.F.		
70002	FURNISH AND INSTALL 6 INCH PIPE & FITTINGS	100	L.F.		
70003	FURNISH AND INSTALL 8 INCH PIPE & FITTINGS	1300	L.F.		

PROPOSAL

NAME OF BIDDER

SOUTH INGERSOLL STREET AND RUTLEDGE STREET ASSESSMENT DISTRICT - 2012

CONTRACT NO. 6803

ITEM	TYPE OF WORK	ESTIMATED QUANTITIES		UNIT PRICE BID	TOTAL BID
70004	FURNISH AND INSTALL 10 INCH PIPE & FITTINGS	40	L.F.		
70005	FURNISH AND INSTALL 12 INCH PIPE & FITTINGS	70	L.F.		
70405	CUT-IN CONNECTION	1	EACH		
70407	FURNISH AND INSTALL HYDRANT	5	EACH		
70408	SELECT FILL - SAND FOR WATER	1530	L.F.		
70413	FURNISH AND INSTALL STYROFOAM	72	L.F.		
70414	CUT OFF EXISTING WATER MAIN	5	EACH		
70415	ABANDON WATER VALVE BOX	4	EACH		
70416	ABANDON HYDRANT	2	EACH		
70417	ABANDON WATER VALVE ACCESS STRUCTURE	2	EACH		
70418	ADJUST WATER VALVE BOX	2	EACH		
70424	TERRACE RESTORATION FOR WATER MAIN	50	L.F.		
70427	FURNISH AND INSTALL 4 INCH VALVE	1	EACH		
70428	FURNISH AND INSTALL 6 INCH VALVE	5	EACH		
70429	FURNISH AND INSTALL 8 INCH VALVE	5	EACH		
70440	EXTEND AND RECONNECT SERVICE LATERAL - 1 INCH	115	L.F.		
70443	RECONNECT / DISCONNECT SERVICE LATERAL - 1 INCH	6	EACH		
70444	RECONNECT / DISCONNECT SERVICE LATERAL - 1.5 INCHES OR 2 INCHES	1	EACH		
70450	FURNISH AND INSTALL CURB BOX	3	EACH		
70451	FURNISH AND INSTALL CURB STOP	3	EACH		
70452	ADJUST WATER SERVICE BOX	5	EACH		
70453	ABANDON EXISTING CURB BOX	2	EACH		

PROPOSAL

NAME OF BIDDER

SOUTH INGERSOLL STREET AND RUTLEDGE STREET ASSESSMENT DISTRICT - 2012

CONTRACT NO. 6803

ITEM	TYPE OF WORK	ESTIMATED QUANTITIES		UNIT PRICE BID	TOTAL BID
70454	REPLACE COPPER SERVICE LATERAL	20	L.F.		
70455	PIPE PLUG FOR WATER MAIN INSTALLATION	2	EACH		
70456	FURNISH EXCAVATION AND DITCH FOR LIVE TAP	5	EA		
<b>GRAND TOTAL</b>					

## SECTION F: BID BOND

KNOW ALL MEN BY THESE PRESENT, THAT \_\_\_\_\_  
(a corporation of the State of \_\_\_\_\_) (individual), (partnership), hereinafter referred to as the "Principal") and \_\_\_\_\_, a corporation of the State of \_\_\_\_\_ (hereinafter referred to as the "Surety") and licensed to do business in the State of Wisconsin, are held and firmly bound unto the City of Madison, (hereinafter referred to as the "Obligee"), in the sum of five per cent (5%) of the amount of the total bid or bids of the Principal herein accepted by the Obligee, for the payment of which the Principal and the Surety bind themselves, their heirs, executors, administrators, successors and assigns, jointly and severally, firmly by these presents.

The conditions of this obligation are such that, whereas the Principal has submitted, to the City of Madison a certain bid, including the related alternate, and substitute bids attached hereto and hereby made a part hereof, to enter into a contract in writing for the construction of:

### **SOUTH INGERSOLL STREET & RUTLEDGE STREET ASSESSMENT DISTRICT – 2012 CONTRACT NO. 6803**

1. If said bid is rejected by the Obligee, then this obligation shall be void.
2. If said bid is accepted by the Obligee and the Principal shall execute and deliver a contract in the form specified by the Obligee (properly completed in accordance with said bid) and shall furnish a bond for his/her faithful performance of said contract, and for the payment of all persons performing labor or furnishing materials in connection therewith, and shall in all other respects perform the agreement created by the acceptance of said bid, then this obligation shall be void.

If said bid is accepted by the Obligee and the Principal shall fail to execute and deliver the contract and the performance and payment bond noted in 2. above executed by this Surety, or other Surety approved by the City of Madison, all within the time specified or any extension thereof, the Principal and Surety agree jointly and severally to forfeit to the Obligee as liquidated damages the sum mentioned above, it being understood that the liability of the Surety for any and all claims hereunder shall in no event exceed the sum of this obligation as stated, and it is further understood that the Principal and Surety reserve the right to recover from the Obligee that portion of the forfeited sum which exceed the actual liquidated damages incurred by the Obligee.

The Surety, for value received, hereby stipulates and agrees that the obligations of said Surety and its bond shall be in no way impaired or affected by an extension of the time within which the Obligee may accept such bid, and said Surety does hereby waive notice of any such extension.

IN WITNESS WHEREOF, the Principal and the Surety have hereunto set their hands and seals, and such of them as are corporations have caused their corporate seals to be hereto affixed and these presents to be signed by their proper officers, on the day and year set forth below.

Seal

\_\_\_\_\_  
Principal

\_\_\_\_\_  
Date

By:

\_\_\_\_\_

\_\_\_\_\_  
Name of Surety

By:

\_\_\_\_\_

\_\_\_\_\_  
Date

This certifies that I have been duly licensed as an agent for the above company in Wisconsin under License No. \_\_\_\_\_ for the year \_\_\_\_\_, and appointed as attorney in fact with authority to execute this bid bond and the payment and performance bond referred to above, which power of attorney has not been revoked.

\_\_\_\_\_  
Date

\_\_\_\_\_  
Agent

\_\_\_\_\_  
Address

\_\_\_\_\_  
City, State and Zip Code

\_\_\_\_\_  
Telephone Number

#### NOTE TO SURETY & PRINCIPAL

The bid submitted which this bond guarantees may be rejected if the following instrument is not attached to this bond:

Power of Attorney showing that the agent of Surety is currently authorized to execute bonds on behalf of the Surety, and in the amounts referenced above.

## Certificate of Biennial Bid Bond

TIME PERIOD - VALID (FROM/TO)
NAME OF SURETY
NAME OF CONTRACTOR
CERTIFICATE HOLDER <p style="text-align: center;">City of Madison, Wisconsin</p>

This is to certify that a biennial bid bond issued by the above-named Surety is currently on file with the City of Madison.

This certificate is issued as a matter of information and conveys no rights upon the certificate holder and does not amend, extend or alter the coverage of the biennial bid bond.

Cancellation: Should the above policy be cancelled before the expiration date, the issuing Surety will give thirty (30) days written notice to the certificate holder indicated above.

\_\_\_\_\_  
Signature of Authorized Contractor Representative

\_\_\_\_\_  
Date



## SECTION G: AGREEMENT

THIS AGREEMENT made this \_\_\_\_\_ day of \_\_\_\_\_ in the year Two Thousand and Twelve between \_\_\_\_\_ hereinafter called the Contractor, and the City of Madison, Wisconsin, hereinafter called the City.

WHEREAS, the Common Council of the said City of Madison under the provisions of a resolution adopted \_\_\_\_\_, \_\_\_\_\_, and by virtue of authority vested in the said Council, has awarded to the Contractor the work of performing certain construction.

NOW, THEREFORE, the Contractor and the City, for the consideration hereinafter named, agree as follows:

1. **Scope of Work.** The Contractor shall, perform the construction, execution and completion of the following listed complete work or improvement in full compliance with the Plans, Specifications, Standard Specifications, Supplemental Specifications, Special Provisions and contract; perform all items of work covered or stipulated in the proposal; perform all altered or extra work; and shall furnish, unless otherwise provided in the contract, all materials, implements, machinery, equipment, tools, supplies, transportation, and labor necessary to the prosecution and completion of the work or improvements:

### SOUTH INGERSOLL STREET & RUTLEDGE STREET ASSESSMENT DISTRICT – 2012 CONTRACT NO. 6803

2. **Completion Date/Contract Time.** Construction work must begin within seven (7) calendar days after the date appearing on mailed written notice to do so shall have been sent to the Contractor and shall be carried on at a rate so as to secure full completion SEE SPECIAL PROVISIONS, the rate of progress and the time of completion being essential conditions of this Agreement.
3. **Contract Price.** The City shall pay to the Contractor at the times, in the manner and on the conditions set forth in said specifications, the sum of \_\_\_\_\_ (\$ \_\_\_\_\_) Dollars being the amount bid by such Contractor and which was awarded to him/her as provided by law.
4. **Wage Rates for Employees of Public Works Contractors**

**General and Authorization.** The Contractor shall compensate its employees at the prevailing wage rate in accordance with section 66.0903, Wis. Stats., DWD 290 of the Wisconsin Administrative Code and as hereinafter provided.

“Public Works” shall include building or work involving the erection, construction, remodeling, repairing or demolition of buildings, parking lots, highways, streets, bridges, sidewalks, street lighting, traffic signals, sanitary sewers, water mains and appurtenances, storm sewers, and the grading and landscaping of public lands.

“Building or work” includes construction activity as distinguished from manufacturing, furnishing of materials, or servicing and maintenance work, except for the delivery of mineral aggregate such as sand, gravel, bituminous asphaltic concrete or stone which is incorporated into the work under contract with the City by depositing the material directly in final place from transporting vehicle.

“Erection, construction, remodeling, repairing” means all types of work done on a particular building or work at the site thereof in the construction or development of the project, including without limitation, erecting, construction, remodeling, repairing, altering, painting, and decorating, the transporting of materials and supplies to or from the building or work done by the employees of the Contractor, Subcontractor, or Agent thereof, and the manufacturing or furnishing of materials, articles, supplies or equipment on the site of the building or work, by persons employed by the Contractor, Subcontractor, or Agent thereof.

“Employees working on the project” means laborers, workers, and mechanics employed directly upon the site of work.

“Laborers, Workers, and Mechanics” include preapprentices, helpers, trainees, learners and properly registered and indentured apprentices but exclude clerical, supervisory, and other personnel not performing manual labor.

**Establishment of Wage Rates.** The Department of Public Works shall periodically obtain a current schedule of prevailing wage rates from DWD. The schedule shall be used to establish the City of Madison Prevailing Wage Rate Schedule for Public Works Construction (prevailing wage rate). The Department of Public Works may include known increases to the prevailing wage rate which can be documented and are to occur on a future specific date. The prevailing wage rate shall be included in public works contracts subsequently negotiated or solicited by the City. Except for known increases contained within the schedule, the prevailing wage rate shall not change during the contract. The approved wage rate is attached hereto.

**Workforce Profile.** The Contractor shall, at the time of signature of the contract, notify the City Engineer in writing of the names and classifications of all the employees of the Contractor, Subcontractors, and Agents proposed for the work. In the alternative, the Contractor shall submit in writing the classifications of all the employees of the Contractor, Subcontractors and Agents and the total number of hours estimated in each classification for the work. This workforce profile(s) shall be reviewed by the City Engineer who may, within ten (10) days, object to the workforce profile(s) as not being reflective of that which would be required for the work. The Contractor may request that the workforce profile, or a portion of the workforce profile, be submitted after the signature of the contract but at least ten (10) days prior to the work commencing. Any costs or time loss resulting from modifications to the workforce profile as a result of the City Engineer’s objections shall be the responsibility of the Contractor.

**Payrolls and Records.** The Contractor shall keep weekly payroll records setting forth the name, address, telephone number, classification, wage rate and fringe benefit package of all the employees who work on the contract, including the employees of the Contractor’s subcontractors and agents. Such weekly payroll records must include the required information for all City contracts and all other contracts on which the employee worked during the week in which the employee worked on the contract. The Contractor shall also keep records of the individual time each employee worked on the project and for each day of the project. Such records shall also set forth the total number of hours of overtime credited to each such employee for each day and week and the amount of overtime pay received in that week. The records shall set forth the full weekly wages earned by each employee and the actual hourly wage paid to the employee.

The Contractor shall submit the weekly payroll records, including the records of the Contractor’s subcontractors and agents, to the City Engineer for every week that work is being done on the contract. The submittal shall be within twenty-one (21) calendar days of the end of the Contractor’s weekly pay period.

Employees shall receive the full amounts accrued at the time of the payment, computed at rates not less than those stated in the prevailing wage rate and each employee's rate shall be determined by the work that is done within the trade or occupation classification which should be properly assigned to the employee.

An employee's classification shall not be changed to a classification of a lesser rate during the contract. If, during the term of the contract, an employee works in a higher pay classification than the one which was previously properly assigned to the employee, then that employee shall be considered to be in the higher pay classification for the balance of the contract, receive the appropriate higher rate of pay, and she/he shall not receive a lesser rate during the balance of the contract. For purposes of clarification, it is noted that there is a distinct difference between working in a different classification with higher pay and doing work within a classification that has varying rates of pay which are determined by the type of work that is done within the classification. For example, the classification "Operating Engineer" provides for different rates of pay for various classes of work and the Employer shall compensate an employee classified as an "Operating Engineer" based on the highest class of work that is done in one day. Therefore, an "Operating Engineer's" rate may vary on a day to day basis depending on the type of work that is done, but it will never be less than the base rate of an "Operating Engineer". Also, as a matter of clarification, it is recognized that an employee may work in a higher paying classification merely by chance and without prior intention, calculation or design. If such is the case and the performance of the work is truly incidental and the occurrence is infrequent, inconsequential and does not serve to undermine the single classification principle herein, then it may not be required that the employee be considered to be in the higher pay classification and receive the higher rate of pay for the duration of the contract. However, the Contractor is not precluded or prevented from paying the higher rate for the limited time that an employee performs work that is outside of the employee's proper classification.

Questions regarding an employee's classification, rate of pay or rate of pay within a classification, shall be resolved by reference to the established practice that predominates in the industry and on which the trade or occupation rate/classification is based. Rate of pay and classification disputes shall be resolved by relying upon practices established by collective bargaining agreements and guidelines used in such determination by appropriate recognized trade unions operating within the City of Madison.

The Contractor, its Subcontractors and Agents shall submit to interrogation regarding compliance with the provisions of this ordinance.

Mulcting of the employees by the Contractor, Subcontractor, and Agents on Public Works contracts, such as by kickbacks or other devices, is prohibited. The normal rate of wage of the employees of the Contractor, Subcontractor, and Agents shall not be reduced or otherwise diminished as a result of payment of the prevailing wage rate on a public works contract.

**Hourly contributions.** Hourly contributions shall be determined in accordance with the prevailing wage rate and with DWD. 290.01(10), Wis. Admin. Code.

**Apprentices and Subjourneypersons.** Apprentices and subjourneypersons performing work on the project shall be compensated in accordance with the prevailing wage rate and with DWD 290.02, and 290.025, respectively, Wis. Admin. Code.

**Straight Time Wages.** The Contractor may pay straight time wages as determined by the prevailing wage rate and DWD 290.04, Wis. Admin. Code.

**Overtime Wages.** The Contractor shall pay overtime wages as required by the prevailing wage rate and DWD 290.05, Wis. Admin. Code.

**Posting of Wage Rates and Hours.** A clearly legible copy of the prevailing wage rate, together with the provisions of Sec. 66.0903(10)(a) and (11)(a), Wis. Stats., shall be kept posted in at least one conspicuous and easily accessible place at the project site by the Contractor and such notice shall remain posted during the full time any laborers, workers or mechanics are employed on the contract.

**Evidence of Compliance by Contractor.** Upon completion of the contract, the Contractor shall file with the Department of Public Works an affidavit stating:

- a. That the Contractor has complied fully with the provisions and requirements of Sec. 66.0903(3), Wis. Stats., and Chapter DWD 290, Wis. Admin. Code; the Contractor has received evidence of compliance from each of the agents and subcontractors; and the names and addresses of all of the subcontractors and agents who worked on the contract.
- b. That full and accurate records have been kept, which clearly indicate the name and trade or occupation of every laborer, worker or mechanic employed by the Contractor in connection with work on the project. The records shall show the number of hours worked by each employee and the actual wages paid therefor; where these records will be kept and the name, address and telephone number of the person who will be responsible for keeping them. The records shall be retained and made available for a period of at least three (3) years following the completion of the project of public works and shall not be removed without prior notification to the municipality.

**Evidence of Compliance by Agent and Subcontractor.** Each agent and subcontractor shall file with the Contractor, upon completion of their portion of the work on the contract an affidavit stating that all the provisions of Sec. 66.0903(3), Wis. Stats., have been fully complied with and that full and accurate records have been kept, which clearly indicate the name and trade or occupation of every laborer, worker or mechanic employed by the Contractor in connection with work on the project. The records shall show the number of hours worked by each employee and the actual wages paid therefor; where these records shall be kept and the name, address and telephone number of the person who shall be responsible for keeping them. The records shall be retained and made available for a period of at least three (3) years following the completion of the project of public works and shall not be removed without prior notification to the municipality.

**Failure to Comply with the Prevailing Wage Rate.** If the Contractor fails to comply with the prevailing wage rate, she/he shall be in default on the contract.

5. **Affirmative Action.** In the performance of the services under this Agreement the Contractor agrees not to discriminate against any employee or applicant because of race, religion, marital status, age, color, sex, disability, national origin or ancestry, income level or source of income, arrest record or conviction record, less than honorable discharge, physical appearance, sexual orientation, political beliefs, or student status. The Contractor further agrees not to discriminate against any subcontractor or person who offers to subcontract on this contract because of race, religion, color, age, disability, sex or national origin.

The Contractor agrees that within thirty (30) days after the effective date of this agreement, the Contractor will provide to the City Affirmative Action Division certain workforce utilization statistics, using a form to be furnished by the City.

If the contract is still in effect, or if the City enters into a new agreement with the Contractor, within one year after the date on which the form was required to be provided, the Contractor will provide updated workforce information using a second form, also to be furnished by the City. The second form will be submitted to the City Affirmative Action Division no later than one year after the date on which the first form was required to be provided.

The Contractor further agrees that, for at least twelve (12) months after the effective date of this contract, it will notify the City Affirmative Action Division of each of its job openings at facilities in Dane County for which applicants not already employees of the Contractor are to be considered. The notice will include a job description, classification, qualifications and application procedures and deadlines. The Contractor agrees to interview and consider candidates referred by the Affirmative Action Division if the candidate meets the minimum qualification standards established by the Contractor, and if the referral is timely. A referral is timely if it is received by the Contractor on or before the date started in the notice.

## Articles of Agreement

### Article I

The Contractor shall take affirmative action in accordance with the provisions of this contract to insure that applicants are employed, and that employees are treated during employment without regard to race, religion, color, age, marital status, disability, sex or national origin and that the employer shall provide harassment free work environment for the realization of the potential of each employee. Such action shall include, but not be limited to, the following: employment, upgrading, demotion or transfer, recruitment or recruitment advertising, layoff or termination, rates of pay or other forms of compensation and selection for training including apprenticeship insofar as it is within the control of the Contractor. The Contractor agrees to post in conspicuous places available to employees and applicants notices to be provided by the City setting out the provisions of the nondiscrimination clauses in this contract.

### Article II

The Contractor shall in all solicitations or advertisements for employees placed by or on behalf of the Contractor state that all qualified or qualifiable applicants will be employed without regard to race, religion, color, age, marital status, disability, sex or national origin.

### Article III

The Contractor shall send to each labor union or representative of workers with which it has a collective bargaining agreement or other contract or understanding a notice to be provided by the City advising the labor union or worker's representative of the Contractor's equal employment opportunity and affirmative action commitments. Such notices shall be posted in conspicuous places available to employees and applicants for employment.

### Article V

The Contractor agrees that it will comply with all provisions of the Affirmative Action Ordinance of the City of Madison, including the contract compliance requirements. The Contractor agrees to submit the model affirmative action plan for public works contractors in a form approved by the Director of Affirmative Action.

## Article VI

The Contractor will maintain records as required by Section 39.02(9)(f) of the Madison General Ordinances and will provide the City Affirmative Action Division with access to such records and to persons who have relevant and necessary information, as provided in Section 39.02(9)(f). The City agrees to keep all such records confidential, except to the extent that public inspection is required by law.

## Article VII

In the event of the Contractor's or subcontractor's failure to comply with the Equal Employment Opportunity and Affirmative Action Provisions of this contract or Section 39.03 and 39.02 of the Madison General Ordinances, it is agreed that the City at its option may do any or all of the following:

1. Cancel, terminate or suspend this Contract in whole or in part.
2. Declare the Contractor ineligible for further City contracts until the Affirmative Action requirements are met.
3. Recover on behalf of the City from the prime Contractor 0.5 percent of the contract award price for each week that such party fails or refuses to comply, in the nature of liquidated damages, but not to exceed a total of five percent (5%) of the contract price, or five thousand dollars (\$5,000), whichever is less. Under public works contracts, if a subcontractor is in noncompliance, the City may recover liquidated damages from the prime Contractor in the manner described above. The preceding sentence shall not be construed to prohibit a prime Contractor from recovering the amount of such damage from the non-complying subcontractor.

## Article VIII

The Contractor shall include the above provisions of this contract in every subcontract so that such provisions will be binding upon each subcontractor. The Contractor shall take such action with respect to any subcontractor as necessary to enforce such provisions, including sanctions provided for noncompliance.

## Article IX

The Contractor shall allow the maximum feasible opportunity to small business enterprises to compete for any subcontracts entered into pursuant to this contract.

**SOUTH INGERSOLL STREET & RUTLEDGE STREET ASSESSMENT DISTRICT --  
2012  
CONTRACT NO. 6803**

IN WITNESS WHEREOF, the Contractor has hereunto set his/her hand and seal and the City has caused these presents to be sealed with its corporate seal and to be subscribed by its Mayor and City Clerk the day and year first above written.

Countersigned:

\_\_\_\_\_  
Company Name

\_\_\_\_\_  
Witness Date

\_\_\_\_\_  
President Date

\_\_\_\_\_  
Witness Date

\_\_\_\_\_  
Secretary Date

CITY OF MADISON, WISCONSIN

Provisions have been made to pay the liability that will accrue under this contract.

Approved as to form:

\_\_\_\_\_  
Finance Director

\_\_\_\_\_  
City Attorney

Signed this \_\_\_\_\_ day of \_\_\_\_\_, 20\_\_\_\_\_

\_\_\_\_\_  
Witness

\_\_\_\_\_  
Mayor Date

\_\_\_\_\_  
Witness

\_\_\_\_\_  
City Clerk Date

**SECTION H: PAYMENT AND PERFORMANCE BOND**

KNOW ALL MEN BY THESE PRESENTS, that we \_\_\_\_\_  
as principal, and \_\_\_\_\_  
Company of \_\_\_\_\_ as surety, are held and firmly bound unto the City of  
Madison, Wisconsin, in the sum of \_\_\_\_\_ (\$ \_\_\_\_\_) Dollars, lawful money of the  
United States, for the payment of which sum to the City of Madison, we hereby bind ourselves and our  
respective executors and administrators firmly by these presents.

The condition of this Bond is such that if the above bounden shall on his/her part fully and faithfully  
perform all of the terms of the Contract entered into between him/herself and the City of Madison for the  
construction of:

**SOUTH INGERSOLL STREET & RUTLEDGE STREET ASSESSMENT DISTRICT –  
2012  
CONTRACT NO. 6803**

in Madison, Wisconsin, and shall pay all claims for labor performed and material furnished in the  
prosecution of said work, and save the City harmless from all claims for damages because of negligence  
in the prosecution of said work, and shall save harmless the said City from all claims for compensation  
(under Chapter 102, Wisconsin Statutes) of employees and employees of subcontractor, then this Bond is  
to be void, otherwise of full force, virtue and effect.

Signed and sealed this \_\_\_\_\_ day of \_\_\_\_\_,

Countersigned:

\_\_\_\_\_  
Company Name (Principal)

\_\_\_\_\_  
Witness

\_\_\_\_\_  
President Seal

\_\_\_\_\_  
Secretary

Approved as to form:

\_\_\_\_\_  
Surety Seal

Salary Employee       Commission

\_\_\_\_\_  
City Attorney

By \_\_\_\_\_

Attorney-in-Fact

This certifies that I have been duly licensed as an agent for the above company in Wisconsin under  
License No. \_\_\_\_\_ for the year 20\_\_\_\_\_, and appointed as attorney-in-fact with  
authority to execute this payment and performance bond which power of attorney has not been revoked.

\_\_\_\_\_  
Date

\_\_\_\_\_  
Agent



# MINIMUM WAGE SCALE

FOR

PUBLIC WORKS IMPROVEMENTS

APPROVED BY: BOARD OF PUBLIC WORKS

MADISON, WISCONSIN

February 7, 2012

The attached "Prevailing Wage Rate Determination: (Pages 1 through 30), issued February 7, 2012, is hereby approved as the Minimum Wage Scale of the City of Madison.

State of Wisconsin Department of Workforce Development Equal Rights Division	<b>DEPARTMENTAL ORDER</b>
<b>ISSUE DATE: 1/13/2012</b>	
<b>PROJECT:</b>	
ALL PUBLIC WORKS PROJECTS UNDER SEC 66.0903, STATS-CITY OF MADISON MADISON CITY, DANE COUNTY, WI Determination No. 201200105	
<b>PROJECT OWNER:</b>	<b>REQUESTER:</b>
ROBERT F. PHILLIPS, CITY ENGINEER CITY OF MADISON-ENGINEERING 210 MARTIN L KING JR BLVD, RM 115 MADISON, WI 53703	ROBERT F. PHILLIPS, CITY ENGINEER CITY OF MADISON-ENGINEERING 210 MARTIN L KING JR BLVD, RM 115 MADISON, WI 53703
<b>ADDITIONAL CONTACT:</b>	
NORMAN DAVIS, CONTRACT COMPLIANCE CITY OF MADISON-DEPT OF CIVIL RTS-AA DIV 210 MARTIN L KING JR BLVD, RM 523 MADISON, WI 537033342	
<p>The department received an application for prevailing wage rate determination for the above-captioned project. The department conducted a survey to determine the prevailing wage rate for the trade(s) or occupation(s) needed to complete the project. The survey's findings appear in the attached project determination.</p> <p>If you believe that the wage rate for any trade or occupation does not accurately reflect the prevailing wage rate in the city, village or town where the project is located, you may ask the department to conduct an administrative review of such wage rate. You must submit this request in writing within 30 days from the date indicated above. Additionally, your request must include wage rate information from at least three similar projects in the city, village or town where the proposed project is located and on which some work has been performed by the contested trade(s) during the current survey period and was previously considered by the department in issuing the attached determination. See DWD 290.10 of the Wisconsin Administrative Code and either s. 66.0903(3)(br), s. 66.0904(4)(e), or s. 103.49(3)(c), Stats., for a complete explanation of the administrative review process.</p> <p>Enclosures</p>	
<p>It is hereby ordered that the prevailing wage rates set forth in the attached project determination shall only be applicable to the above referenced project. This order is a <b>FINAL ORDER</b> of the department unless a timely request for an administrative review is filed with the department.</p> <p>ISSUED BY:</p> <p style="text-align: center;">       Equal Rights Division        Labor Standards Bureau        Construction Wage Standards Section        PO Box 8928 Madison, WI 53708-8928        (608)266-6861     </p> <p style="text-align: center;">       Web Site: <a href="http://dwd.wisconsin.gov/er/">http://dwd.wisconsin.gov/er/</a> </p>	

**PREVAILING WAGE RATE DETERMINATION**

Issued by the State of Wisconsin  
Department of Workforce Development  
Pursuant to s. 66.0903, Wis. Stats.  
Issued On: 1/13/2012

**DETERMINATION NUMBER:** 201200105

**EXPIRATION DATE:** Prime Contracts MUST Be Awarded or Negotiated On Or Before 12/31/2012. If NOT, You MUST Reapply.

**PROJECT NAME:** ALL PUBLIC WORKS PROJECTS UNDER SEC 66.0903, STATS.-CITY OF MADISON

**PROJECT LOCATION:** MADISON CITY, DANE COUNTY, WI

**CONTRACTING AGENCY:** CITY OF MADISON-ENGINEERING

<b>CLASSIFICATION:</b>	Contractors are responsible for correctly classifying their workers. Either call the Department of Workforce Development (DWD) with trade or classification questions or consult DWD's Dictionary of Occupational Classifications & Work Descriptions on the DWD website at: <a href="http://dwd.wisconsin.gov/er/prevailing_wage_rate/Dictionary/dictionary_main.htm">dwd.wisconsin.gov/er/prevailing_wage_rate/Dictionary/dictionary_main.htm</a> .
<b>OVERTIME:</b>	Time and one-half must be paid for all hours worked: <ul style="list-style-type: none"><li>- over 10 hours per day on prevailing wage projects</li><li>- over 40 hours per calendar week</li><li>- Saturday and Sunday</li><li>- on all of the following holidays: January 1; the last Monday in May; July 4; the 1st Monday in September; the 4th Thursday in November; December 25;</li><li>- The day before if January 1, July 4 or December 25 falls on a Saturday;</li><li>- The day following if January 1, July 4 or December 25 falls on a Sunday.</li></ul> Apply the time and one-half overtime calculation to whichever is higher between the Hourly Basic Rate listed on this project determination or the employee's regular hourly rate of pay. Add any applicable Premium or DOT Premium to the Hourly Basic Rate before calculating overtime.  A DOT Premium (discussed below) may supersede this time and one-half requirement.
<b>FUTURE INCREASE:</b>	When a specific trade or occupation requires a future increase, you MUST add the full hourly increase to the "TOTAL" on the effective date(s) indicated for the specific trade or occupation.
<b>PREMIUM PAY:</b>	If indicated for a specific trade or occupation, the full amount of such pay MUST be added to the "HOURLY BASIC RATE OF PAY" indicated for such trade or occupation, whenever such pay is applicable.
<b>DOT PREMIUM:</b>	This premium only applies to highway and bridge projects owned by the Wisconsin Department of Transportation and to the project type heading "Airport Pavement or State Highway Construction." DO NOT apply the premium calculation under any other project type on this determination.
<b>APPRENTICES:</b>	Pay apprentices a percentage of the applicable journey person's hourly basic rate of pay and hourly fringe benefit contributions specified in this determination. Obtain the appropriate percentage from each apprentice's contract or indenture.
<b>SUBJOURNEY:</b>	Subjourney wage rates may be available for some of the trades or occupations indicated below with the exception of laborers, truck drivers and heavy equipment operators. Any employer interested in using a subjourney classification on this project MUST complete Form ERD-10880 and request the applicable wage rate from the Department of Workforce Development PRIOR to using the subjourney worker on this project.

This document **MUST BE POSTED** by the **CONTRACTING AGENCY** in at least one conspicuous and easily accessible place on **the site of the project**. A local governmental unit may post this document at the place normally used to post public notices if there is no common site on the project. This document **MUST** remain posted during the entire time any worker is employed on the project and **MUST** be physically incorporated into the specifications and all contracts and subcontracts. If you have any questions, please write to the Equal Rights Division, Labor Standards Bureau, P.O. Box 8928, Madison, Wisconsin 53708 or call (608) 266-6861.

The following statutory provisions apply to local governmental unit projects of public works and are set forth below pursuant to the requirements of s. 66.0903(8), Stats.

s. 66.0903 (1) (f) & s. 103.49 (1) (c) "PREVAILING HOURS OF LABOR" for any trade or occupation in any area means 10 hours per day and 40 hours per week and may not include any hours worked on a Saturday or Sunday or on any of the following holidays:

1. January 1.
2. The last Monday in May.
3. July 4.
4. The first Monday in September.
5. The 4th Thursday in November.
6. December 25.
7. The day before if January 1, July 4 or December 25 falls on a Saturday.
8. The day following if January 1, July 4 or December 25 falls on a Sunday.

**s. 66.0903 (10) RECORDS; INSPECTION; ENFORCEMENT.**

(a) Each contractor, subcontractor, or contractor's or subcontractor's agent performing work on a project of public works that is subject to this section shall keep full and accurate records clearly indicating the name and trade or occupation of every person performing the work described in sub. (4) and an accurate record of the number of hours worked by each of those persons and the actual wages paid for the hours worked.

**s. 66.0903 (11) LIABILITY AND PENALTIES.**

(a) 1. Any contractor, subcontractor, or contractor's or subcontractor's agent who fails to pay the prevailing wage rate determined by the department under sub. (3) or who pays less than 1.5 times the hourly basic rate of pay for all hours worked in excess of the prevailing hours of labor is liable to any affected employee in the amount of his or her unpaid wages or his or her unpaid overtime compensation and in an additional amount as liquidated damages as provided under subd. 2., 3., whichever is applicable.

2. If the department determines upon inspection under sub. (10) (b) or (c) that a contractor, subcontractor, or contractor's or subcontractor's agent has failed to pay the prevailing wage rate determined by the department under sub. (3) or has paid less than 1.5 times the hourly basic rate of pay for all hours worked in excess of the prevailing hours of labor, the department shall order the contractor to pay to any affected employee the amount of his or her unpaid wages or his or her unpaid overtime compensation and an additional amount equal to 100 percent of the amount of those unpaid wages or that unpaid overtime compensation as liquidated damages within a period specified by the department in the order.

3. In addition to or in lieu of recovering the liability specified in subd. 1. as provided in subd. 2., any employee for and in behalf of that employee and other employees similarly situated may commence an action to recover that liability in any court of competent jurisdiction. If the court finds that a contractor, subcontractor, or contractor's or subcontractor's agent has failed to pay the prevailing wage rate determined by the department under sub. (3) or has paid less than 1.5 times the hourly basic rate of pay for all hours worked in excess of the prevailing hours of labor, the court shall order the contractor, subcontractor, or agent to pay to any affected employee the amount of his or her unpaid wages or his or her unpaid overtime compensation and an additional amount equal to 100 percent of the amount of those unpaid wages or that unpaid overtime compensation as liquidated damages.

5. No employee may be a party plaintiff to an action under subd. 3. unless the employee consents in writing to become a party and the consent is filed in the court in which the action is brought. Notwithstanding s. 814.04 (1), the court shall, in addition to any judgment awarded to the plaintiff, allow reasonable attorney fees and costs to be paid by the defendant.

**BUILDING OR HEAVY CONSTRUCTION**

Includes sheltered enclosures with walk-in access for the purpose of housing persons, employees, machinery, equipment or supplies and non-sheltered work such as canals, dams, dikes, reservoirs, storage tanks, etc. A sheltered enclosure need not be "habitable" in order to be considered a building. The installation of machinery and/or equipment, both above and below grade level, does not change a project's character as a building. On-site grading, utility work and landscaping are included within this definition. Residential buildings of four (4) stories or less, agricultural buildings, parking lots and driveways are NOT included within this definition.

**SKILLED TRADES**

Fringe Benefits Must Be Paid On <u>All</u> Hours Worked		HOURLY BASIC RATE OF PAY	HOURLY FRINGE BENEFITS	TOTAL
<u>CODE</u>	<u>TRADE OR OCCUPATION</u>	\$	\$	\$
101	Acoustic Ceiling Tile Installer	29.06	15.16	44.22
102	Boilermaker	31.09	23.75	54.84
103	Bricklayer, Blocklayer or Stonemason Future Increase(s): Add \$.50/hr on 6/1/2012; Add \$ .80 on 6/1/2013 Premium Increase(s): DOT PREMIUM: Pay two times the hourly basic rate on Sunday, New Year's Day, Memorial Day, Independence Day, Labor Day, Thanksgiving Day & Christmas Day.	32.26	16.60	48.86
104	Cabinet Installer	29.06	15.16	44.22
105	Carpenter	29.06	15.16	44.22
106	Carpet Layer or Soft Floor Coverer	29.06	15.16	44.22
107	Cement Finisher	32.03	15.13	47.16
108	Drywall Taper or Finisher	26.10	13.65	39.75
109	Electrician Future Increase(s): Add \$.50/hr on 6/1/2012. Premium Increase(s): DOT PREMIUM: Pay two times the hourly basic rate on Sunday, New Year's Day, Memorial Day, Independence Day, Labor Day, Thanksgiving Day & Christmas Day.	32.55	18.68	51.23
110	Elevator Constructor	43.79	25.48	69.27
111	Fence Erector	25.50	0.26	25.76
112	Fire Sprinkler Fitter	36.39	16.75	53.14
113	Glazier	36.23	11.22	47.45
114	Heat or Frost Insulator	33.28	22.51	55.79
115	Insulator (Batt or Blown)	23.62	11.55	35.17
116	Ironworker	30.90	19.11	50.01
117	Lather	29.06	15.16	44.22

<b>Fringe Benefits Must Be Paid On <u>All</u> Hours Worked</b>		<b>HOURLY BASIC RATE OF PAY</b>	<b>HOURLY FRINGE BENEFITS</b>	<b>TOTAL</b>
<b>CODE</b>	<b>TRADE OR OCCUPATION</b>	<b>\$</b>	<b>\$</b>	<b>\$</b>
118	Line Constructor (Electrical)	35.97	18.08	54.05
119	Marble Finisher	31.16	16.27	47.43
120	Marble Mason	32.66	16.20	48.86
121	Metal Building Erector	22.00	4.11	26.11
122	Millwright	30.66	15.21	45.87
123	Overhead Door Installer	18.00	4.86	22.86
124	Painter	25.65	14.11	39.76
125	Pavement Marking Operator	26.00	0.00	26.00
126	Piledriver	29.56	15.16	44.72
127	Pipeline Fuser or Welder (Gas or Utility)	29.54	18.84	48.38
129	Plasterer	29.03	15.16	44.19
130	Plumber	36.20	15.02	51.22
132	Refrigeration Mechanic Future Increase(s): Add \$.85/hr on 12/1/11; Add \$.90/hr on 6/1/12; Add \$.85/hr on 12/1/12.	40.35	16.21	56.56
133	Roofer or Waterproofer	28.06	0.00	28.06
134	Sheet Metal Worker	34.23	20.19	54.42
135	Steamfitter Future Increase(s): Add \$.85/hr on 12/1/11; Add \$.90/hr on 6/1/12; Add \$.85/hr on 12/1/12.	40.35	16.21	56.56
137	Teledata Technician or Installer	21.26	6.99	28.25
138	Temperature Control Installer	32.55	18.68	51.23
139	Terrazzo Finisher	18.00	5.35	23.35
140	Terrazzo Mechanic	31.16	16.27	47.43
141	Tile Finisher Future Increase(s): Add \$.50/hr on 6/1/2012; Add \$.80/hr on 6/1/2013.	23.77	16.00	39.77
142	Tile Setter Future Increase(s): Add \$.50/hr on 6/1/2012; Add \$.80/hr on 6/1/2013.	29.71	16.00	45.71
143	Tuckpointer, Caulker or Cleaner	22.00	9.75	31.75
144	Underwater Diver (Except on Great Lakes)	36.20	18.81	55.01
146	Well Driller or Pump Installer	25.32	15.30	40.62

Fringe Benefits Must Be Paid On <u>All</u> Hours Worked		HOURLY BASIC RATE OF PAY	HOURLY FRINGE BENEFITS	TOTAL
<u>CODE</u>	<u>TRADE OR OCCUPATION</u>	\$	\$	\$
147	Siding Installer	16.74	2.58	19.32
150	Heavy Equipment Operator - ELECTRICAL LINE CONSTRUCTION ONLY	32.37	16.48	48.85
151	Light Equipment Operator -ELECTRICAL LINE CONSTRUCTION ONLY	28.78	15.16	43.94
152	Heavy Truck Driver - ELECTRICAL LINE CONSTRUCTION ONLY	17.80	9.00	26.80
153	Light Truck Driver - ELECTRICAL LINE CONSTRUCTION ONLY	23.38	12.48	35.86
154	Groundman - ELECTRICAL LINE CONSTRUCTION ONLY	21.30	10.97	32.27

---

**TRUCK DRIVERS**

---

Fringe Benefits Must Be Paid On <u>All</u> Hours Worked		HOURLY BASIC RATE OF PAY	HOURLY FRINGE BENEFITS	TOTAL
<u>CODE</u>	<u>TRADE OR OCCUPATION</u>	\$	\$	\$
201	Single Axle or Two Axle	18.00	6.98	24.98
203	Three or More Axle Future Increase(s): Add \$1.57/hr on 6/1/2012.	18.00	13.83	31.83
204	Articulated, Euclid, Dumptor, Off Road Material Hauler Future Increase(s): Add \$1/hr on 6/3/2012; Add \$1/hr on 6/2/2013.	31.89	17.98	49.87
205	Pavement Marking Vehicle	19.25	10.84	30.09
207	Truck Mechanic	18.00	13.68	31.68

---

**LABORERS**

---

Fringe Benefits Must Be Paid On <u>All</u> Hours Worked		HOURLY BASIC RATE OF PAY	HOURLY FRINGE BENEFITS	TOTAL
<u>CODE</u>	<u>TRADE OR OCCUPATION</u>	\$	\$	\$
301	General Laborer Future Increase(s): Add \$.50/hr. on 06/04/2012; Add \$.75/hr. on 06/03/2013 Premium Increase(s): Add \$1.00/hr for certified welder; Add \$.25/hr for mason tender	24.14	13.45	37.59
302	Asbestos Abatement Worker	23.96	12.88	36.84
303	Landscaper	17.00	6.36	23.36
310	Gas or Utility Pipeline Laborer (Other Than Sewer and Water)	20.39	12.20	32.59
311	Fiber Optic Laborer (Outside, Other Than Concrete Encased)	16.51	0.00	16.51
314	Railroad Track Laborer	14.00	4.77	18.77

**HEAVY EQUIPMENT OPERATORS  
SITE PREPARATION, UTILITY OR LANDSCAPING WORK ONLY**

<b>Fringe Benefits Must Be Paid On <u>All</u> Hours Worked</b>		<b>HOURLY BASIC RATE OF PAY</b>	<b>HOURLY FRINGE BENEFITS</b>	<b>TOTAL</b>
<b>CODE</b>	<b>TRADE OR OCCUPATION</b>	<b>\$</b>	<b>\$</b>	<b>\$</b>
501	Air Track, Rotary or Percussion Drilling Machine &/or Hammers, Blaster; Asphalt Milling Machine; Boring Machine (Directional, Horizontal or Vertical); Backhoe (Track Type) Having a Mfgr's Rated Capacity of 130,000 Lbs. or Over; Backhoe (Track Type) Having a Mfgr's Rated Capacity of Under 130,000 Lbs., Backhoe (Mini, 15,000 Lbs. & Under); Bulldozer or Endloader (Over 40 hp); Compactor (Self-Propelled 85 Ft Total Drum Width & Over, or Tractor Mounted, Towed & Light Equipment); Concrete Batch Plant, Batch Hopper; Concrete Breaker (Large, Auto, Vibratory/Sonic, Manual or Remote); Crane, Shovel, Dragline, Clamshells; Forklift (Machinery Moving or Steel Erection, 25 Ft & Over); Gradall (Cruz-Aire Type); Grader or Motor Patrol; Master Mechanic; Mechanic or Welder; Robotic Tool Carrier (With or Without Attachments); Scraper (Self Propelled or Tractor Drawn) 5 cu yds or More Capacity; Tractor or Truck Mounted Hydraulic Backhoe; Tractor or Truck Mounted Hydraulic Crane (10 Tons or Under); Tractor (Scraper, Dozer, Pusher, Loader); Trencher (Wheel Type or Chain Type Having Over 8 Inch Bucket). Future Increase(s): Add \$1/hr on 6/3/2012; Add \$1/hr on 6/2/2013.	32.42	17.98	50.40
502	Backfiller; Broom or Sweeper; Bulldozer or Endloader (Under 40 hp); Environmental Burner; Forestry Equipment, Timbco, Tree Shear, Tub Grinder, Processor; Jeep Digger; Screenshot (Milling Machine); Skid Rig; Straddle Carrier or Travel Lift; Stump Chipper; Trencher (Wheel Type or Chain Type Having 8 Inch Bucket & Under).	31.89	14.44	46.33
503	Air Compressor (&/or 400 CFM or Over); Augers (Vertical & Horizontal); Compactor (Self-Propelled 84 Ft Total Drum Width & Under, or Tractor Mounted, Towed & Light Equipment); Crusher, Screening or Wash Plant; Farm or Industrial Type Tractor; Forklift; Generator (&/or 150 KW or Over); Greaser; High Pressure Utility Locating Machine (Daylighting Machine); Mulcher; Oiler; Post Hole Digger or Driver; Pump (3 Inch or Over) or Well Points; Refrigeration Plant or Freeze Machine; Rock, Stone Breaker; Skid Steer Loader (With or Without Attachments); Vibratory Hammer or Extractor, Power Pack. Future Increase(s): Add \$1/hr on 6/3/2012; Add \$1/hr on 6/2/2013.	31.89	17.98	49.87
504	Work Performed on the Great Lakes Including Diver; Wet Tender or Hydraulic Dredge Engineer.	36.20	18.81	55.01
505	Work Performed on the Great Lakes Including Crane or Backhoe Operator; Assistant Hydraulic Dredge Engineer; Hydraulic Dredge Leverman or Diver's Tender; Mechanic or Welder; 70 Ton & Over Tug Operator. Premium Increase(s): Add \$.50/hr for friction crane, lattice boom or crane certification (CCO).	37.45	19.45	56.90



**Fringe Benefits Must Be Paid On All Hours Worked**

<u>CODE</u>	<u>TRADE OR OCCUPATION</u>	<u>HOURLY BASIC RATE OF PAY</u> \$	<u>HOURLY FRINGE BENEFITS</u> \$	<u>TOTAL</u> \$
506	Work Performed on the Great Lakes Including Deck Equipment Operator or Machineryman (Maintains Cranes Over 50 Tons or Backhoes 115,000 Lbs. or More); Tug, Launch or Loader, Dozer or Like Equipment When Operated on a Barge, Breakwater Wall, Slip, Dock or Scow, Deck Machinery.	26.80	18.52	45.32
507	Work Performed on the Great Lakes Including Deck Equipment Operator, Machineryman or Fireman (Operates 4 Units or More or Maintains Cranes 50 Tons or Under or Backhoes 115,000 Lbs. or Under); Deck Hand, Deck Engineer or Assistant Tug Operator; Off Road Trucks - Great Lakes ONLY.	27.75	19.15	46.90

**HEAVY EQUIPMENT OPERATORS  
EXCLUDING SITE PREPARATION, UTILITY, PAVING LANDSCAPING WORK**

**Fringe Benefits Must Be Paid On All Hours Worked**

<u>CODE</u>	<u>TRADE OR OCCUPATION</u>	<u>HOURLY BASIC RATE OF PAY</u> \$	<u>HOURLY FRINGE BENEFITS</u> \$	<u>TOTAL</u> \$
508	Boring Machine (Directional); Crane, Tower Crane, Pedestal Tower or Derrick, With or Without Attachments, With a Lifting Capacity of Over 100 Tons, Self-Erecting Tower Crane With a Lifting Capacity of Over 4,000 Lbs., Crane With Boom Dollies; Crane, Tower Crane, Pedestal Tower or Derrick, With Boom, Leads &/or Jib Lengths Measuring 176 Ft or Over; Master Mechanic. Future Increase(s): Add \$1/hr on 6/3/2012; Add \$1/hr on 6/2/2013. Premium Increase(s): Add \$.50/hr at 200 ton; Add \$1.00/hr. at 300 ton; Add \$1.50/hr at 400 ton; Add \$2.00/hr at 500 ton.	34.62	17.98	52.60
509	Backhoe (Track Type) Having a Mfgr's Rated Capacity of 130,000 Lbs. or Over; Boring Machine (Horizontal or Vertical); Caisson Rig; Crane, Tower Crane, Portable Tower, Pedestal Tower or Derrick, With or Without Attachments, With a Lifting Capacity of 100 Tons or Under, Self-Erecting Tower Crane With A Lifting Capacity Of 4,000 Lbs. & Under; Crane, Tower Crane, Portable Tower, Pedestal Tower or Derrick, With Boom, Leads &/or Jib Lengths Measuring 175 Ft or Under; Pile Driver; Versi Lifts, Tri-Lifts & Gantrys (20,000 Lbs. & Over). Future Increase(s): Add \$1/hr on 6/3/2012; Add \$1/hr on 6/2/2013. Premium Increase(s): Add \$.25/hr for cranes with lifting capacity of 45 ton or over.	33.62	17.98	51.60
510	Backhoe (Track Type) Having a Mfgr.'s Rated Capacity of Under 130,000 Lbs., Backhoe (Mini, 15,000 Lbs. & Under); Concrete Bump Cutter, Grinder, Planing or Grooving Machine; Concrete Laser/Screed; Concrete Paver (Slipform); Concrete Pump (Over 46 Meter), Concrete Conveyor (Rotec or Bidwell Type); Concrete Slipform Placer Curb & Gutter Machine; Concrete Spreader & Distributor; Dredge (NOT Performing Work on the Great Lakes); Forklift (Machinery Moving or Steel Erection, 25 Ft & Over); Gradall (Cruz-Aire Type); Hydro-Blaster (10,000 PSI or Over); Milling Machine; Skid Rig; Traveling Crane (Bridge Type). Future Increase(s): Add \$1/hr on 6/3/2012; Add \$1/hr on 6/2/2013.	32.42	17.98	50.40

<b>Fringe Benefits Must Be Paid On <u>All</u> Hours Worked</b>		<b>HOURLY BASIC RATE OF PAY</b>	<b>HOURLY FRINGE BENEFITS</b>	<b>TOTAL</b>
<b>CODE</b>	<b>TRADE OR OCCUPATION</b>	<b>\$</b>	<b>\$</b>	<b>\$</b>
511	Air, Track, Rotary or Percussion Drilling Machine &/or Hammers, Blaster; Bulldozer or Endloader (Over 40 hp); Compactor (Self-Propelled 85 Ft Total Drum Width & Over, or Tractor Mounted, Towed & Light Equipment); Concrete Pump (46 Meter & Under), Concrete Conveyor (Rotec or Bidwell Type); Crane (Carry Deck, Mini) or Truck Mounted Hydraulic Crane (10 Tons or Under); Environmental Burner; Gantrys (Under 20,000 Lbs.); Grader or Motor Patrol; High Pressure Utility Locating Machine (Daylighting Machine); Manhoist; Material or Stack Hoist; Mechanic or Welder; Railroad Track Rail Leveling Machine, Tie Placer, Extractor, Tamper, Stone Leveler or Rehabilitation Equipment; Roller (Over 5 Ton); Scraper (Self Propelled or Tractor Drawn) 5 cu yd or More Capacity; Screed (Milling Machine); Sideboom; Straddle Carrier or Travel Lift; Tining or Curing Machine; Tractor (Scraper, Dozer, Pusher, Loader); Tractor or Truck Mounted Hydraulic Backhoe; Tractor or Truck Mounted Hydraulic Crane (10 Tons or Under); Trencher (Wheel Type or Chain Type Having Over 8-Inch Bucket). Future Increase(s): Add \$1/hr on 6/3/2012; Add \$1/hr on 6/2/2013.	31.89	17.98	49.87
512	Backfiller; Broom or Sweeper; Bulldozer or Endloader (Under 40 hp); Compactor (Self-Propelled 84 Ft Total Drum Width & Under, or Tractor Mounted, Towed & Light Equipment); Concrete Batch Plant, Batch Hopper; Concrete Breaker (Large, Auto, Vibratory/Sonic, Manual or Remote); Concrete Conveyor System; Concrete Finishing Machine (Road Type); Fireman (Pile Driver & Derrick NOT Performing Work on the Great Lakes); Grout Pump; Hoist (Tugger, Automatic); Industrial Locomotives; Jeep Digger; Lift Slab Machine; Mulcher; Robotic Tool Carrier (With or Without Attachments); Roller (Rubber Tire, 5 Ton or Under); Screw or Gypsum Pumps; Stabilizing or Concrete Mixer (Self-Propelled or 14S or Over); Stump Chipper; Trencher (Wheel Type or Chain Type Having 8-Inch Bucket & Under); Winches & A-Frames.	35.59	19.10	54.69
513	Air Compressor (&/or 400 CFM or Over); Air, Electric or Hydraulic Jacking System; Augers (Vertical & Horizontal); Boatmen (NOT Performing Work on the Great Lakes); Boiler (Temporary Heat); Crusher, Screening or Wash Plant; Elevator; Farm or Industrial Type Tractor; Fireman (Asphalt Plant NOT Performing Work on the Great Lakes); Forklift; Generator (&/or 150 KW or Over); Greaser; Heaters (Mechanical); Loading Machine (Conveyor); Oiler; Post Hole Digger or Driver; Prestress Machine; Pump (3 Inch or Over) or Well Points; Refrigeration Plant or Freeze Machine; Rock, Stone Breaker; Skid Steer Loader (With or Without Attachments); Vibratory Hammer or Extractor, Power Pack. Future Increase(s): Add \$1/hr on 6/3/2012; Add \$1/hr on 6/2/2013.	29.19	17.98	47.17
514	Gas or Utility Pipeline, Except Sewer & Water (Primary Equipment). Future Increase(s): Add \$2/hr. on 1/1/2013.	34.89	19.68	54.57
515	Gas or Utility Pipeline, Except Sewer & Water (Secondary Equipment).	30.32	17.40	47.72
516	Fiber Optic Cable Equipment	22.00	7.27	29.27

**SEWER, WATER OR TUNNEL CONSTRUCTION**

Includes those projects that primarily involve public sewer or water distribution, transmission or collection systems and related tunnel work (excluding buildings).

**SKILLED TRADES**

Fringe Benefits Must Be Paid On <u>All</u> Hours Worked				
<u>CODE</u>	<u>TRADE OR OCCUPATION</u>	<u>HOURLY BASIC RATE OF PAY</u> \$	<u>HOURLY FRINGE BENEFITS</u> \$	<u>TOTAL</u> \$
103	Bricklayer, Blocklayer or Stonemason	32.66	16.20	48.86
105	Carpenter Premium Increase(s): DOT PREMIUM: Pay two times the hourly basic rate on Sunday, New Year's Day, Memorial Day, Independence Day, Labor Day, Thanksgiving Day & Christmas Day.	33.43	19.31	52.74
107	Cement Finisher Future Increase(s): Add \$1.86 on 6/1/12; Add \$1.87 on 6/1/13; Add \$1.87 on 6/1/14; Add \$1.87 on 6/1/15; Add \$1.75 on 6/1/16. Premium Increase(s): DOT PREMIUMS: 1) Pay two times the hourly basic rate on Sunday, New Year's Day, Memorial Day, Independence Day, Labor Day, Thanksgiving Day & Christmas Day. 2) Add \$1.40/hr when the Wisconsin Department of Transportation or responsible governing agency requires that work be performed at night under artificial illumination with traffic control and the work is completed after sunset and before sunrise.	30.68	15.68	46.36
109	Electrician Future Increase(s): Add \$1.40/hr on 6/1/2012. Add \$1.60/hr on 6/1/2013. Premium Increase(s): DOT PREMIUM: Pay two times the hourly basic rate on Sunday, New Year's Day, Memorial Day, Independence Day, Labor Day, Thanksgiving Day & Christmas Day.	31.54	20.95	52.49
111	Fence Erector	25.50	0.26	25.76
116	Ironworker Premium Increase(s): DOT PREMIUM: Pay two times the hourly basic rate on Sunday, New Year's Day, Memorial Day, Independence Day, Labor Day, Thanksgiving Day & Christmas Day.	31.31	22.22	53.53
118	Line Constructor (Electrical)	35.97	18.08	54.05
125	Pavement Marking Operator	26.00	0.00	26.00
126	Piledriver	29.56	15.16	44.72
130	Plumber	36.20	15.02	51.22
135	Steamfitter	39.90	15.76	55.66
137	Teledata Technician or Installer	21.26	6.99	28.25

Fringe Benefits Must Be Paid On <u>All</u> Hours Worked				
<u>CODE</u>	<u>TRADE OR OCCUPATION</u>	<u>HOURLY BASIC RATE OF PAY</u>	<u>HOURLY FRINGE BENEFITS</u>	<u>TOTAL</u>
		\$	\$	\$
143	Tuckpointer, Caulker or Cleaner	22.00	9.75	31.75
144	Underwater Diver (Except on Great Lakes)	36.20	18.81	55.01
146	Well Driller or Pump Installer	24.22	14.80	39.02
150	Heavy Equipment Operator - ELECTRICAL LINE CONSTRUCTION ONLY	32.37	16.48	48.85
151	Light Equipment Operator -ELECTRICAL LINE CONSTRUCTION ONLY	28.78	15.16	43.94
152	Heavy Truck Driver - ELECTRICAL LINE CONSTRUCTION ONLY	17.80	9.00	26.80
153	Light Truck Driver - ELECTRICAL LINE CONSTRUCTION ONLY	23.38	12.48	35.86
154	Groundman - ELECTRICAL LINE CONSTRUCTION ONLY	21.30	10.97	32.27

**TRUCK DRIVERS**

Fringe Benefits Must Be Paid On <u>All</u> Hours Worked				
<u>CODE</u>	<u>TRADE OR OCCUPATION</u>	<u>HOURLY BASIC RATE OF PAY</u>	<u>HOURLY FRINGE BENEFITS</u>	<u>TOTAL</u>
		\$	\$	\$
201	Single Axle or Two Axle	23.00	8.64	31.64
203	Three or More Axle	21.17	9.51	30.68
204	Articulated, Euclid, Dumptor, Off Road Material Hauler Future Increase(s): Add \$1.75/hr on 6/1/2012; Add \$1.85/hr on 6/1/2013. Premium Increase(s): DOT PREMIUM: Pay two times the hourly basic rate on Sunday, New Year's Day, Memorial Day, Independence Day, Labor Day, Thanksgiving Day & Christmas Day.	22.50	16.19	38.69
205	Pavement Marking Vehicle	19.25	10.84	30.09
207	Truck Mechanic	21.17	9.51	30.68

**LABORERS**

Fringe Benefits Must Be Paid On <u>All</u> Hours Worked				
<u>CODE</u>	<u>TRADE OR OCCUPATION</u>	<u>HOURLY BASIC RATE OF PAY</u>	<u>HOURLY FRINGE BENEFITS</u>	<u>TOTAL</u>
		\$	\$	\$
301	General Laborer Future Increase(s): Add \$.70/hr. on 06/04/2012; Add \$.80/hr. on 06/03/2013 Premium Increase(s): Add \$.20 for blaster, bracer, manhole builder, caulker, bottomman and power tool; Add \$.55 for pipelayer; Add \$1.00 for tunnel work 0-15 lbs. compressed air; Add \$2.00 for over 15-30 lbs. compressed air; Add \$3.00 for over 30 lbs. compressed air.	25.28	13.44	38.72

Fringe Benefits Must Be Paid On <u>All</u> Hours Worked		HOURLY BASIC RATE OF PAY	HOURLY FRINGE BENEFITS	TOTAL
CODE	TRADE OR OCCUPATION	\$	\$	\$
303	Landscaper	17.00	6.36	23.36
304	Flagperson or Traffic Control Person	12.00	17.89	29.89
311	Fiber Optic Laborer (Outside, Other Than Concrete Encased)	16.51	0.00	16.51
314	Railroad Track Laborer	14.00	4.77	18.77

**HEAVY EQUIPMENT OPERATORS  
SEWER, WATER OR TUNNEL WORK**

Fringe Benefits Must Be Paid On <u>All</u> Hours Worked		HOURLY BASIC RATE OF PAY	HOURLY FRINGE BENEFITS	TOTAL
CODE	TRADE OR OCCUPATION	\$	\$	\$
521	Backhoe (Track Type) Having a Mfgr.'s Rated Capacity of 130,000 Lbs. or Over; Caisson Rig; Crane, Tower Crane, Pedestal Tower or Derrick, With Boom, Leads &/or Jib Lengths Measuring 176 Ft or Over; Crane, Tower Crane, Pedestal Tower or Derrick, With or Without Attachments, With a Lifting Capacity of Over 100 Tons, Self-Erecting Tower Crane With a Lifting Capacity Of Over 4,000 Lbs., Crane With Boom Dollies; Master Mechanic; Pile Driver. Future Increase(s): Add \$1/hr on 6/3/2012; Add \$1/hr on 6/2/2013. Premium Increase(s): Add \$.25/hr for cranes with lifting capacity of 45 ton or over.	33.62	17.98	51.60
522	Backhoe (Track Type) Having a Mfgr.'s Rated Capacity of Under 130,000 Lbs., Backhoe (Mini, 15,000 Lbs. & Under); Boring Machine (Directional); Concrete Bump Cutter, Grinder, Planing or Grooving Machine; Concrete Laser/Screed; Concrete Paver (Slipform); Concrete Pump (Over 46 Meter), Concrete Conveyor (Rotec or Bidwell Type); Concrete Spreader & Distributor; Crane, Tower Crane, Portable Tower, Pedestal Tower or Derrick, With Boom, Leads &/or Jib Lengths Measuring 175 Ft or Under; Crane, Tower Crane, Portable Tower, Pedestal Tower or Derrick, With or Without Attachments, With a Lifting Capacity of 100 Tons or Under, Self-Erecting Tower Crane With a Lifting Capacity of 4,000 Lbs. & Under; Dredge (NOT Performing Work on the Great Lakes); Milling Machine; Skid Rig; Telehandler; Travelling Crane (Bridge Type). Future Increase(s): Add \$1/hr on 6/3/2012; Add \$1/hr on 6/2/2013.	32.42	17.98	50.40

<b>Fringe Benefits Must Be Paid On <u>All</u> Hours Worked</b>		<b>HOURLY BASIC RATE OF PAY</b>	<b>HOURLY FRINGE BENEFITS</b>	<b>TOTAL</b>
<b>CODE</b>	<b>TRADE OR OCCUPATION</b>	<b>\$</b>	<b>\$</b>	<b>\$</b>
523	Air Track, Rotary or Percussion Drilling Machine &/or Hammers, Blaster; Boring Machine (Horizontal or Vertical); Bulldozer or Endloader (Over 40 hp); Crane (Carry Deck, Mini) or Truck Mounted Hydraulic Crane (10 Tons or Under); Concrete Pump (46 Meter & Under), Concrete Conveyor (Rotec or Bidwell Type); Concrete Slipform Placer Curb & Gutter Machine; Gradall (Cruz-Aire Type); Grader or Motor Patrol; Hydro-Blaster (10,000 PSI or Over); Manhole; Material or Stack Hoist; Mechanic or Welder; Roller (Over 5 Ton); Scraper (Self Propelled or Tractor Drawn) 5 cu yd or More Capacity; Screenshot (Milling Machine); Sideboom; Straddle Carrier or Travel Lift; Tractor (Scraper, Dozer, Pusher, Loader); Tractor or Truck Mounted Hydraulic Backhoe; Tractor or Truck Mounted Hydraulic Crane (10 Tons or Under); Trencher (Wheel Type or Chain Type Having Over 8-Inch Bucket). Future Increase(s): Add \$1/hr on 6/3/2012; Add \$1/hr on 6/2/2013.	31.89	17.98	49.87
524	Backfiller; Broom or Sweeper; Bulldozer or Endloader (Under 40 hp); Compactor (Self-Propelled 85 Ft Total Drum Width & Over, or Tractor Mounted, Towed & Light Equipment); Concrete Batch Plant, Batch Hopper; Concrete Breaker (Large, Auto, Vibratory/Sonic, Manual or Remote); Concrete Conveyor System; Concrete Finishing Machine (Road Type); Environmental Burner; Fireman (Pile Driver & Derrick NOT Performing Work on the Great Lakes); Forestry Equipment, Timbco, Tree Shear, Tub Grinder, Processor; Hoist (Tugger, Automatic); Grout Pump; Jeep Digger; Lift Slab Machine; Mulcher; Power Subgrader; Pump (3 Inch or Over) or Well Points; Robotic Tool Carrier (With or Without Attachments); Roller (Rubber Tire, 5 Ton or Under); Screw or Gypsum Pumps; Stabilizing or Concrete Mixer (Self-Propelled or 14S or Over); Stump Chipper; Tining or Curing Machine; Trencher (Wheel Type or Chain Type Having 8-Inch Bucket & Under); Winches & A-Frames.	30.89	17.16	48.05
525	Air Compressor (&/or 400 CFM or Over); Air, Electric or Hydraulic Jacking System; Augers (Vertical & Horizontal); Compactor (Self-Propelled 84 Ft Total Drum Width & Under, or Tractor Mounted, Towed & Light Equipment); Crusher, Screening or Wash Plant; Farm or Industrial Type Tractor; Fireman (Asphalt Plant NOT Performing Work on the Great Lakes); Generator (&/or 150 KW or Over); Heaters (Mechanical); High Pressure Utility Locating Machine (Daylighting Machine); Loading Machine (Conveyor); Post Hole Digger or Driver; Refrigeration Plant or Freeze Machine; Rock, Stone Breaker; Skid Steer Loader (With or Without Attachments); Vibratory Hammer or Extractor, Power Pack. Future Increase(s): Add \$1/hr on 6/3/2012; Add \$1/hr on 6/2/2013.	29.19	17.98	47.17
526	Boiler (Temporary Heat); Forklift; Greaser; Oiler.	29.19	17.96	47.15
527	Work Performed on the Great Lakes Including Diver; Wet Tender or Hydraulic Dredge Engineer.	36.20	18.81	55.01
528	Work Performed on the Great Lakes Including 70 Ton & Over Tug Operator; Assistant Hydraulic Dredge Engineer; Crane or Backhoe Operator; Hydraulic Dredge Leverman or Diver's Tender; Mechanic or Welder.	36.20	18.81	55.01

<b>Fringe Benefits Must Be Paid On <u>All</u> Hours Worked</b>				
<u>CODE</u>	<u>TRADE OR OCCUPATION</u>	<u>HOURLY BASIC RATE OF PAY</u>	<u>HOURLY FRINGE BENEFITS</u>	<u>TOTAL</u>
		\$	\$	\$
529	Work Performed on the Great Lakes Including Deck Equipment Operator or Machineryman (Maintains Cranes Over 50 Tons or Backhoes 115,000 Lbs. or More); Tug, Launch or Loader, Dozer or Like Equipment When Operated on a Barge, Breakwater Wall, Slip, Dock or Scow, Deck Machinery.	26.80	18.52	45.32
530	Work Performed on the Great Lakes Including Deck Equipment Operator; Machineryman or Fireman (Operates 4 Units or More or Maintains Cranes 50 Tons or Under or Backhoes 115,000 Lbs. or Under), Deck Hand, Deck Engineer or Assistant Tug Operator; Off Road Trucks - Great Lakes ONLY.	26.80	18.52	45.32

**AIRPORT PAVEMENT OR STATE HIGHWAY CONSTRUCTION**

Includes all airport projects (excluding buildings) and all projects awarded by the Wisconsin Department of Transportation (excluding buildings).

**SKILLED TRADES**

Fringe Benefits Must Be Paid On <u>All</u> Hours Worked		HOURLY BASIC RATE OF PAY	HOURLY FRINGE BENEFITS	TOTAL
CODE	TRADE OR OCCUPATION	\$	\$	\$
103	Bricklayer, Blocklayer or Stonemason	32.66	15.92	48.58
105	Carpenter	30.23	15.16	45.39
107	Cement Finisher Future Increase(s): Add \$1.86 on 6/1/12; Add \$1.87 on 6/1/13; Add \$1.87 on 6/1/14; Add \$1.87 on 6/1/15; Add \$1.75 on 6/1/16. Premium Increase(s): DOT PREMIUMS: 1) Pay two times the hourly basic rate on Sunday, New Year's Day, Memorial Day, Independence Day, Labor Day, Thanksgiving Day & Christmas Day. 2) Add \$1.40/hr when the Wisconsin Department of Transportation or responsible governing agency requires that work be performed at night under artificial illumination with traffic control and the work is completed after sunset and before sunrise.	30.68	15.68	46.36
109	Electrician	37.25	14.68	51.93
111	Fence Erector	35.62	0.00	35.62
116	Ironworker	30.90	19.11	50.01
118	Line Constructor (Electrical)	35.97	18.08	54.05
124	Painter	28.00	11.15	39.15
125	Pavement Marking Operator	26.65	14.92	41.57
126	Piledriver	29.56	15.16	44.72
133	Rofer or Waterproofer	28.06	0.00	28.06
137	Teledata Technician or Installer	21.26	6.99	28.25
143	Tuckpointer, Caulker or Cleaner	22.00	9.75	31.75
144	Underwater Diver (Except on Great Lakes)	36.20	18.81	55.01
150	Heavy Equipment Operator - ELECTRICAL LINE CONSTRUCTION ONLY	35.42	12.90	48.32
151	Light Equipment Operator -ELECTRICAL LINE CONSTRUCTION ONLY	35.50	14.27	49.77
152	Heavy Truck Driver - ELECTRICAL LINE CONSTRUCTION ONLY	25.18	14.07	39.25
153	Light Truck Driver - ELECTRICAL LINE CONSTRUCTION ONLY	23.38	12.48	35.86



154	Groundman - ELECTRICAL LINE CONSTRUCTION ONLY	21.30	10.97	32.27
-----	---	-------	-------	-------

**TRUCK DRIVERS**

Fringe Benefits Must Be Paid On All Hours Worked

<u>CODE</u>	<u>TRADE OR OCCUPATION</u>	<u>HOURLY BASIC RATE OF PAY</u> \$	<u>HOURLY FRINGE BENEFITS</u> \$	<u>TOTAL</u> \$
201	Single Axle or Two Axle Future Increase(s): Add \$1.75/hr on 6/1/2012; Add \$1.85/hr on 6/1/2013. Premium Increase(s): DOT PREMIUM: Pay two times the hourly basic rate on Sunday, New Year's Day, Memorial Day, Independence Day, Labor Day, Thanksgiving Day & Christmas Day.	22.35	16.19	38.54
203	Three or More Axle Future Increase(s): Add \$1.75/hr on 6/1/2012; Add \$1.85/hr on 6/1/2013. Premium Increase(s): DOT PREMIUM: Pay two times the hourly basic rate on Sunday, New Year's Day, Memorial Day, Independence Day, Labor Day, Thanksgiving Day & Christmas Day.	22.50	16.19	38.69
204	Articulated, Euclid, Dumptor, Off Road Material Hauler	24.91	15.63	40.54
205	Pavement Marking Vehicle	23.84	14.76	38.60
206	Shadow or Pilot Vehicle	24.76	15.35	40.11
207	Truck Mechanic	24.91	15.35	40.26

**LABORERS**

Fringe Benefits Must Be Paid On All Hours Worked

<u>CODE</u>	<u>TRADE OR OCCUPATION</u>	<u>HOURLY BASIC RATE OF PAY</u> \$	<u>HOURLY FRINGE BENEFITS</u> \$	<u>TOTAL</u> \$
301	General Laborer Future Increase(s): Add \$1.60/hr on 6/1/2012; Add \$1.70/hr on 6/1/2013; Add \$1.60/hr on 6/1/2014. Premium Increase(s): Add \$.10/hr for topman, air tool operator, vibrator or tamper operator (mechanical hand operated), chain saw operator and demolition burning torch laborer; Add \$.15/hr for bituminous worker (raker and luteman), formsetter (curb, sidewalk and pavement) and strike off man; Add \$.20/hr for blaster and powderman; Add \$.25/hr for bottomman; Add \$.35/hr for line and grade specialist; Add \$.45/hr for pipelayer. / DOT PREMIUMS: 1) Pay two times the hourly basic rate on Sunday, New Year's Day, Memorial Day, Independence Day, Labor Day, Thanksgiving Day & Christmas Day. 2) Add \$1.25/hr for work on projects involving temporary traffic control setup, for lane and shoulder closures, when work under artificial illumination conditions is necessary as required by the project provisions (including prep time prior to and/or cleanup after such time period).	27.20	13.45	40.65
302	Asbestos Abatement Worker	23.96	12.88	36.84
303	Landscaper Future Increase(s): Add \$1.60/hr on 6/1/12; Add \$1.70/hr on 6/1/13; Add \$1.60/hr on 6/1/14. Premium Increase(s): DOT PREMIUMS: 1) Pay two times the hourly basic rate on Sunday, New Year's Day, Memorial Day, Independence Day, Labor Day, Thanksgiving Day & Christmas Day. 2) Add \$1.25/hr for work on projects involving temporary traffic control setup, for lane and shoulder closures, when work under artificial illumination conditions is necessary as required by the project provisions (including prep time prior to and/or cleanup after such time period).	27.20	13.45	40.65
304	Flagperson or Traffic Control Person Future Increase(s): Add \$1.60/hr on 6/1/2012; Add \$1.70/hr on 6/1/2013; Add \$1.60/hr on 6/1/2014. Premium Increase(s): DOT PREMIUMS: 1) Pay two times the hourly basic rate on Sunday, New Year's Day, Memorial Day, Independence Day, Labor Day, Thanksgiving Day & Christmas Day. 2) Add \$1.25/hr when the Wisconsin Department of Transportation or responsible governing agency requires that work be performed at night under artificial illumination with traffic control and the work is completed after sunset and before sunrise.	23.55	13.45	37.00

**Fringe Benefits Must Be Paid On All Hours Worked**

<u>CODE</u>	<u>TRADE OR OCCUPATION</u>	<u>HOURLY BASIC RATE OF PAY</u> \$	<u>HOURLY FRINGE BENEFITS</u> \$	<u>TOTAL</u> \$
311	Fiber Optic Laborer (Outside, Other Than Concrete Encased)	16.51	0.00	16.51
314	Railroad Track Laborer	14.00	4.77	18.77

**HEAVY EQUIPMENT OPERATORS  
AIRPORT PAVEMENT OR STATE HIGHWAY CONSTRUCTION**

**Fringe Benefits Must Be Paid On All Hours Worked**

<u>CODE</u>	<u>TRADE OR OCCUPATION</u>	<u>HOURLY BASIC RATE OF PAY</u> \$	<u>HOURLY FRINGE BENEFITS</u> \$	<u>TOTAL</u> \$
531	Crane, Tower Crane, Pedestal Tower or Derrick, With Boom, Leads &/or Jib Lengths Measuring 176 Ft or Over; Crane, Tower Crane, Pedestal Tower or Derrick, With or Without Attachments, With a Lifting Capacity of Over 100 Tons, Self-Erecting Tower Crane With a Lifting Capacity Of Over 4,000 Lbs., Crane With Boom Dollies; Traveling Crane (Bridge Type). Future Increase(s): Add \$2/hr on 6/1/12; Add \$2/hr on 6/1/13; Add \$1.75/hr on 6/1/14. Premium Increase(s): DOT PREMIUMS: 1) Pay two times the hourly basic rate on Sunday, New Year's Day, Memorial Day, Independence Day, Labor Day, Thanksgiving Day & Christmas Day. 2) Add \$1.25/hr for work on projects involving temporary traffic control setup, for lane and shoulder closures, when work under artificial illumination conditions is necessary as required by the project provisions (including prep time prior to and/or cleanup after such time period).	34.22	18.90	53.12
532	Backhoe (Track Type) Having a Mfgr.'s Rated Capacity of 130,000 Lbs. or Over; Caisson Rig; Crane, Tower Crane, Portable Tower, Pedestal Tower or Derrick, With Boom, Leads &/or Jib Lengths Measuring 175 Ft or Under; Crane, Tower Crane, Portable Tower, Pedestal Tower or Derrick, With or Without Attachments, With a Lifting Capacity of 100 Tons or Under, Self-Erecting Tower Crane With A Lifting Capacity Of 4,000 Lbs., & Under; Dredge (NOT Performing Work on the Great Lakes); Licensed Boat Pilot (NOT Performing Work on the Great Lakes); Pile Driver. Future Increase(s): Add \$2/hr on 6/1/12; Add \$2/hr on 6/1/13; Add \$1.75/hr on 6/1/14. Premium Increase(s): DOT PREMIUMS: 1) Pay two times the hourly basic rate on Sunday, New Year's Day, Memorial Day, Independence Day, Labor Day, Thanksgiving Day & Christmas Day. 2) Add \$1.25/hr for work on projects involving temporary traffic control setup, for lane and shoulder closures, when work under artificial illumination conditions is necessary as required by the project provisions (including prep time prior to and/or cleanup after such time period).	33.72	18.90	52.62

<b>Fringe Benefits Must Be Paid On <u>All</u> Hours Worked</b>		<b>HOURLY BASIC RATE OF PAY</b>	<b>HOURLY FRINGE BENEFITS</b>	<b>TOTAL</b>
<b>CODE</b>	<b>TRADE OR OCCUPATION</b>	<b>\$</b>	<b>\$</b>	<b>\$</b>
533	<p>Air Track, Rotary or Percussion Drilling Machine &amp;/or Hammers, Blaster; Asphalt Heater, Planer &amp; Scarifier; Asphalt Milling Machine; Asphalt Screed; Automatic Subgrader (Concrete); Backhoe (Track Type) Having a Mfgr.'s Rated Capacity of Under 130,000 Lbs., Backhoe (Mini, 15,000 Lbs. &amp; Under); Bituminous (Asphalt) Plant &amp; Paver, Screed; Boatmen (NOT Performing Work on the Great Lakes); Boring Machine (Directional, Horizontal or Vertical); Bridge (Bidwell) Paver; Bulldozer or Endloader; Concrete Batch Plant, Batch Hopper; Concrete Breaker (Large, Auto, Vibratory/Sonic, Manual or Remote); Concrete Bump Cutter, Grinder, Planing or Grooving Machine; Concrete Conveyor System; Concrete Laser/Screed; Concrete Paver (Slipform); Concrete Pump, Concrete Conveyor (Rotec or Bidwell Type); Concrete Slipform Placer Curb &amp; Gutter Machine; Concrete Spreader &amp; Distributor; Crane (Carry Deck, Mini) or Truck Mounted Hydraulic Crane (10 Tons or Under); Crane With a Lifting Capacity of 25 Tons or Under; Forestry Equipment, Timbco, Tree Shear, Tub Grinder, Processor; Gradall (Cruz-Aire Type); Grader or Motor Patrol; Grout Pump; Hydro-Blaster (10,000 PSI or Over); Loading Machine (Conveyor); Material or Stack Hoist; Mechanic or Welder; Milling Machine; Post Hole Digger or Driver; Roller (Over 5 Ton); Scraper (Self Propelled or Tractor Drawn) 5 cu yds or More Capacity; Shoulder Widener; Sideboom; Skid Rig; Stabilizing or Concrete Mixer (Self-Propelled or 14S or Over); Straddle Carrier or Travel Lift; Tractor (Scraper, Dozer, Pusher, Loader); Tractor or Truck Mounted Hydraulic Backhoe; Trencher (Wheel Type or Chain Type); Tube Finisher; Tugger (NOT Performing Work on the Great Lakes); Winches &amp; A-Frames.</p> <p>Future Increase(s):                      Add \$2/hr on 6/1/12; Add \$2/hr on 6/1/13; Add \$1.75/hr on 6/1/14.</p> <p>Premium Increase(s):                      DOT PREMIUMS: 1) Pay two times the hourly basic rate on Sunday, New Year's Day, Memorial Day, Independence Day, Labor Day, Thanksgiving Day &amp; Christmas Day. 2) Add \$1.25/hr for work on projects involving temporary traffic control setup, for lane and shoulder closures, when work under artificial illumination conditions is necessary as required by the project provisions (including prep time prior to and/or cleanup after such time period).</p>	33.22	18.90	52.12

<b>Fringe Benefits Must Be Paid On <u>All</u> Hours Worked</b>		<b>HOURLY BASIC RATE OF PAY</b>	<b>HOURLY FRINGE BENEFITS</b>	<b>TOTAL</b>
<b>CODE</b>	<b>TRADE OR OCCUPATION</b>	<b>\$</b>	<b>\$</b>	<b>\$</b>
534	<p>Belting, Burlap, Texturing Machine; Broom or Sweeper; Compactor (Self-Propelled or Tractor Mounted, Towed &amp; Light Equipment); Concrete Finishing Machine (Road Type); Environmental Burner; Farm or Industrial Type Tractor; Fireman (Asphalt Plant, Pile Driver &amp; Derrick NOT Performing Work on the Great Lakes); Forklift; Greaser; Hoist (Tugger, Automatic); Jeep Digger; Joint Sawyer (Multiple Blade); Launch (NOT Performing Work on the Great Lakes); Lift Slab Machine; Mechanical Float; Mulcher; Power Subgrader; Robotic Tool Carrier (With or Without Attachments); Roller (Rubber Tire, 5 Ton or Under); Self Propelled Chip Spreader; Shouldering Machine; Skid Steer Loader (With or Without Attachments); Telehandler; Tining or Curing Machine.</p> <p>Future Increase(s): Add \$2/hr on 6/1/12; Add \$2/hr on 6/1/13; Add \$1.75/hr on 6/1/14.</p> <p>Premium Increase(s): DOT PREMIUMS: 1) Pay two times the hourly basic rate on Sunday, New Year's Day, Memorial Day, Independence Day, Labor Day, Thanksgiving Day &amp; Christmas Day. 2) Add \$1.25/hr for work on projects involving temporary traffic control setup, for lane and shoulder closures, when work under artificial illumination conditions is necessary as required by the project provisions (including prep time prior to and/or cleanup after such time period).</p>	32.96	18.90	51.86
535	<p>Air Compressor (&amp;/or 400 CFM or Over); Air, Electric or Hydraulic Jacking System; Augers (Vertical &amp; Horizontal); Automatic Belt Conveyor &amp; Surge Bin; Boiler (Temporary Heat); Concrete Proportioning Plant; Crusher, Screening or Wash Plant; Generator (&amp;/or 150 KW or Over); Heaters (Mechanical); High Pressure Utility Locating Machine (Daylighting Machine); Mudjack; Oiler; Prestress Machine; Pug Mill; Pump (3 Inch or Over) or Well Points; Rock, Stone Breaker; Screed (Milling Machine); Stump Chipper; Tank Car Heaters; Vibratory Hammer or Extractor, Power Pack.</p> <p>Future Increase(s): Add \$2/hr on 6/1/12; Add \$2/hr on 6/1/13; Add \$1.75/hr on 6/1/14.</p> <p>Premium Increase(s): DOT PREMIUMS: 1) Pay two times the hourly basic rate on Sunday, New Year's Day, Memorial Day, Independence Day, Labor Day, Thanksgiving Day &amp; Christmas Day. 2) Add \$1.25/hr for work on projects involving temporary traffic control setup, for lane and shoulder closures, when work under artificial illumination conditions is necessary as required by the project provisions (including prep time prior to and/or cleanup after such time period).</p>	32.67	18.90	51.57
536	Fiber Optic Cable Equipment.	22.00	7.27	29.27
537	Work Performed on the Great Lakes Including Diver; Wet Tender or Hydraulic Dredge Engineer.	36.20	18.81	55.01

<b>Fringe Benefits Must Be Paid On <u>All</u> Hours Worked</b>		<b>HOURLY BASIC RATE OF PAY</b>	<b>HOURLY FRINGE BENEFITS</b>	<b>TOTAL</b>
<b>CODE</b>	<b>TRADE OR OCCUPATION</b>	<b>\$</b>	<b>\$</b>	<b>\$</b>
538	Work Performed on the Great Lakes Including 70 Ton & Over Tug Operator; Assistant Hydraulic Dredge Engineer; Crane or Backhoe Operator; Hydraulic Dredge Leverman or Diver's Tender; Mechanic or Welder.	36.20	18.81	55.01
539	Work Performed on the Great Lakes Including Deck Equipment Operator or Machineryman (Maintains Cranes Over 50 Tons or Backhoes 115,000 Lbs. or More); Tug, Launch or Loader, Dozer or Like Equipment When Operated on a Barge, Breakwater Wall, Slip, Dock or Scow, Deck Machinery.	26.80	18.52	45.32
540	Work Performed on the Great Lakes Including Deck Equipment Operator, Machineryman or Fireman (Operates 4 Units or More or Maintains Cranes 50 Tons or Under or Backhoes 115,000 Lbs. or Under); Deck Hand, Deck Engineer or Assistant Tug Operator; Off Road Trucks-Great Lakes ONLY.	26.80	18.52	45.32

**LOCAL STREET OR MISCELLANEOUS PAVING CONSTRUCTION**

Includes roads, streets, alleys, trails, bridges, paths, racetracks, parking lots and driveways (except residential or agricultural), public sidewalks or other similar projects (excluding projects awarded by the Wisconsin Department of Transportation).

**SKILLED TRADES**

Fringe Benefits Must Be Paid On <u>All</u> Hours Worked		HOURLY BASIC RATE OF PAY	HOURLY FRINGE BENEFITS	TOTAL
CODE	TRADE OR OCCUPATION	\$	\$	\$
103	Bricklayer, Blocklayer or Stonemason	32.66	16.20	48.86
105	Carpenter	29.06	15.16	44.22
107	Cement Finisher Future Increase(s): Add \$1.86 on 6/1/12; Add \$1.87 on 6/1/13; Add \$1.87 on 6/1/14; Add \$1.87 on 6/1/15; Add \$1.75 on 6/1/16. Premium Increase(s): DOT PREMIUMS: 1) Pay two times the hourly basic rate on Sunday, New Year's Day, Memorial Day, Independence Day, Labor Day, Thanksgiving Day & Christmas Day. 2) Add \$1.40/hr when the Wisconsin Department of Transportation or responsible governing agency requires that work be performed at night under artificial illumination with traffic control and the work is completed after sunset and before sunrise.	30.68	15.68	46.36
109	Electrician Future Increase(s): Add \$.50/hr. effective 06/04/2012. Premium Increase(s): DOT PREMIUM: Pay two times the hourly basic rate on Sunday, New Year's Day, Memorial Day, Independence Day, Labor Day, Thanksgiving Day & Christmas Day.	28.74	17.86	46.60
111	Fence Erector	25.50	0.26	25.76
116	Ironworker	30.90	19.11	50.01
118	Line Constructor (Electrical)	35.97	18.08	54.05
124	Painter	25.65	14.11	39.76
125	Pavement Marking Operator	26.00	0.00	26.00
126	Piledriver	29.56	15.16	44.72
133	Rofer or Waterproofer	28.06	0.00	28.06
137	Teledata Technician or Installer	21.26	6.99	28.25
143	Tuckpointer, Caulker or Cleaner	22.00	9.75	31.75
144	Underwater Diver (Except on Great Lakes)	36.20	18.81	55.01
150	Heavy Equipment Operator - ELECTRICAL LINE CONSTRUCTION ONLY	35.42	12.90	48.32

Fringe Benefits Must Be Paid On <u>All</u> Hours Worked		HOURLY BASIC RATE OF PAY	HOURLY FRINGE BENEFITS	TOTAL
<u>CODE</u>	<u>TRADE OR OCCUPATION</u>	\$	\$	\$
151	Light Equipment Operator -ELECTRICAL LINE CONSTRUCTION ONLY Premium Increase(s): DOT PREMIUM: Pay two times the hourly basic rate on Sunday, New Year's Day, Memorial Day, Independence Day, Labor Day, Thanksgiving Day & Christmas Day.	29.64	14.64	44.28
152	Heavy Truck Driver - ELECTRICAL LINE CONSTRUCTION ONLY	25.18	13.07	38.25
153	Light Truck Driver - ELECTRICAL LINE CONSTRUCTION ONLY	23.38	12.48	35.86
154	Groundman - ELECTRICAL LINE CONSTRUCTION ONLY	21.30	10.97	32.27

---

**TRUCK DRIVERS**

---

Fringe Benefits Must Be Paid On <u>All</u> Hours Worked		HOURLY BASIC RATE OF PAY	HOURLY FRINGE BENEFITS	TOTAL
<u>CODE</u>	<u>TRADE OR OCCUPATION</u>	\$	\$	\$
201	Single Axle or Two Axle	15.00	0.00	15.00
203	Three or More Axle	19.50	4.97	24.47
204	Articulated, Euclid, Dumptor, Off Road Material Hauler Future Increase(s): Add \$1/hr on 6/3/2012; Add \$1/hr on 6/2/2013.	31.89	17.98	49.87
205	Pavement Marking Vehicle	19.25	10.84	30.09
206	Shadow or Pilot Vehicle	15.00	0.00	15.00
207	Truck Mechanic	19.50	4.97	24.47

---

**LABORERS**

---

Fringe Benefits Must Be Paid On <u>All</u> Hours Worked		HOURLY BASIC RATE OF PAY	HOURLY FRINGE BENEFITS	TOTAL
<u>CODE</u>	<u>TRADE OR OCCUPATION</u>	\$	\$	\$
301	General Laborer	26.15	12.29	38.44
303	Landscaper	23.71	15.07	38.78
304	Flagperson or Traffic Control Person	12.00	17.89	29.89
311	Fiber Optic Laborer (Outside, Other Than Concrete Encased)	16.51	0.00	16.51
314	Railroad Track Laborer	14.00	4.77	18.77



**HEAVY EQUIPMENT OPERATORS  
CONCRETE PAVEMENT OR BRIDGE WORK**

<b>Fringe Benefits Must Be Paid On <u>All</u> Hours Worked</b>		<b>HOURLY BASIC RATE OF PAY</b>	<b>HOURLY FRINGE BENEFITS</b>	<b>TOTAL</b>
<b>CODE</b>	<b>TRADE OR OCCUPATION</b>	<b>\$</b>	<b>\$</b>	<b>\$</b>
541	<p>Crane, Tower Crane, Pedestal Tower or Derrick, With or Without Attachments, With a Lifting Capacity of Over 100 Tons, Self-Erecting Tower Crane With a Lifting Capacity Of Over 4,000 Lbs., Crane With Boom Dollies; Crane, Tower Crane, Pedestal Tower or Derrick, With Boom, Leads &amp;/or Jlb Lengths Measuring 176 Ft or Over; Master Mechanic.</p> <p>Future Increase(s): Add \$2/hr on 6/1/12; Add \$2/hr on 6/1/13; Add \$1.75/hr on 6/1/14.</p> <p>Premium Increase(s): DOT PREMIUMS: 1) Pay two times the hourly basic rate on Sunday, New Year's Day, Memorial Day, Independence Day, Labor Day, Thanksgiving Day &amp; Christmas Day. 2) Add \$1.25/hr for work on projects involving temporary traffic control setup, for lane and shoulder closures, when work under artificial illumination conditions is necessary as required by the project provisions (including prep time prior to and/or cleanup after such time period).</p>	34.22	18.90	53.12
542	<p>Backhoe (Track Type) Having a Mfgr.'s Rated Capacity of 130,000 Lbs. or Over; Caisson Rig; Crane, Tower Crane, Portable Tower, Pedestal Tower or Derrick, With or Without Attachments, With a Lifting Capacity of 100 Tons or Under, Self-Erecting Tower Crane With a Lifting Capacity of 4,000 Lbs. &amp; Under; Crane, Tower Crane Portable Tower, Pedestal Tower or Derrick, With Boom, Leads &amp;/or Jib Lengths Measuring 175 Ft or Under; Dredge (NOT Performing Work on the Great Lakes); Licensed Boat Pilot (NOT Performing Work on the Great Lakes); Pile Driver.</p> <p>Future Increase(s): Add \$2/hr on 6/1/12; Add \$2/hr on 6/1/13; Add \$1.75/hr on 6/1/14.</p> <p>Premium Increase(s): DOT PREMIUMS: 1) Pay two times the hourly basic rate on Sunday, New Year's Day, Memorial Day, Independence Day, Labor Day, Thanksgiving Day &amp; Christmas Day. 2) Add \$1.25/hr for work on projects involving temporary traffic control setup, for lane and shoulder closures, when work under artificial illumination conditions is necessary as required by the project provisions (including prep time prior to and/or cleanup after such time period).</p>	33.72	18.90	52.62

Fringe Benefits Must Be Paid On <u>All</u> Hours Worked		HOURLY BASIC RATE OF PAY	HOURLY FRINGE BENEFITS	TOTAL
<u>CODE</u>	<u>TRADE OR OCCUPATION</u>	\$	\$	\$
543	<p>Air Track, Rotary or Percussion Drilling Machine &amp;/or Hammers, Blaster; Automatic Subgrader (Concrete); Backhoe (Track Type) Having a Mfgr.'s Rated Capacity of Under 130,000 Lbs., Backhoe (Mini, 15,000 Lbs. &amp; Under); Boring Machine (Directional, Horizontal or Vertical); Bridge (Bidwell) Paver; Bulldozer or Endloader; Concrete Batch Plant, Batch Hopper; Concrete Breaker (Large, Auto, Vibratory/Sonic, Manual or Remote); Concrete Bump Cutter, Grinder, Planing or Grooving Machine; Concrete Conveyor System; Concrete Laser/Screed; Concrete Paver (Slipform); Concrete Pump, Concrete Conveyor (Rotec or Bidwell Type); Concrete Slipform Placer Curb &amp; Gutter Machine; Concrete Spreader &amp; Distributor; Crane (Carry Deck, Mini) or Truck Mounted Hydraulic Crane (10 Tons or Under); Crane With a Lifting Capacity of 25 Tons or Under; Forestry Equipment, Timbco, Tree Shear, Tub Grinder, Processor; Gradall (Cruz-Aire Type); Grader or Motor Patrol; Grout Pump; Hydro-Blaster (10,000 PSI or Over); Loading Machine (Conveyor); Manhoist; Material or Stack Hoist; Mechanic or Welder; Milling Machine; Post Hole Digger or Driver; Scraper (Self Propelled or Tractor Drawn) 5 cu yds or More Capacity; Shoulder Widener; Sideboom; Skid Rig; Stabilizing or Concrete Mixer (Self-Propelled or 14S or Over); Straddle Carrier or Travel Lift; Tractor (Scraper, Dozer, Pusher, Loader); Tractor or Truck Mounted Hydraulic Backhoe; Trencher (Wheel Type or Chain Type); Tube Finisher; Tugger (NOT Performing Work on the Great Lakes); Winches &amp; A-Frames.</p> <p>Future Increase(s): Add \$2/hr on 6/1/12; Add \$2/hr on 6/1/13; Add \$1.75/hr on 6/1/14.</p> <p>Premium Increase(s): DOT PREMIUMS: 1) Pay two times the hourly basic rate on Sunday, New Year's Day, Memorial Day, Independence Day, Labor Day, Thanksgiving Day &amp; Christmas Day. 2) Add \$1.25/hr for work on projects involving temporary traffic control setup, for lane and shoulder closures, when work under artificial illumination conditions is necessary as required by the project provisions (including prep time prior to and/or cleanup after such time period).</p>	33.22	18.90	52.12

Fringe Benefits Must Be Paid On <u>All</u> Hours Worked		HOURLY BASIC RATE OF PAY	HOURLY FRINGE BENEFITS	TOTAL
<u>CODE</u>	<u>TRADE OR OCCUPATION</u>	\$	\$	\$
544	Backfiller; Belting, Burlap, Texturing Machine; Broom or Sweeper; Compactor (Self-Propelled or Tractor Mounted, Towed & Light Equipment); Concrete Finishing Machine (Road Type); Environmental Burner; Farm or Industrial Type Tractor; Fireman (Pile Driver & Derrick NOT Performing Work on the Great Lakes); Forklift; Greaser; Jeep Digger; Joint Sawyer (Multiple Blade); Launch (NOT Performing Work on the Great Lakes); Lift Slab Machine; Mechanical Float; Mulcher; Power Subgrader; Robotic Tool Carrier (With or Without Attachments); Self Propelled Chip Spreader; Shouldering Machine; Skid Steer Loader (With or Without Attachments); Telehandler; Tining or Curing Machine. Future Increase(s): Add \$2/hr on 6/1/12; Add \$2/hr on 6/1/13; Add \$1.75/hr on 6/1/14. Premium Increase(s): DOT PREMIUMS: 1) Pay two times the hourly basic rate on Sunday, New Year's Day, Memorial Day, Independence Day, Labor Day, Thanksgiving Day & Christmas Day. 2) Add \$1.25/hr for work on projects involving temporary traffic control setup, for lane and shoulder closures, when work under artificial illumination conditions is necessary as required by the project provisions (including prep time prior to and/or cleanup after such time period).	33.22	18.90	52.12
545	Air Compressor (&/or 400 CFM or Over); Air, Electric or Hydraulic Jacking System; Automatic Belt Conveyor & Surge Bin; Boiler (Temporary Heat); Concrete Proportioning Plant; Crusher, Screening or Wash Plant; Generator (&/or 150 KW or Over); Heaters (Mechanical); High Pressure Utility Locating Machine (Daylighting Machine); MudJack; Oiler; Prestress Machine; Pug Mill; Pump (3 Inch or Over) or Well Points; Rock, Stone Breaker; Screed (Milling Machine); Stump Chipper; Tank Car Heaters; Vibratory Hammer or Extractor, Power Pack.	30.42	17.58	48.00
546	Fiber Optic Cable Equipment.	22.00	7.27	29.27
547	Work Performed on the Great Lakes Including Diver; Wet Tender or Hydraulic Dredge Engineer.	36.20	18.81	55.01
548	Work Performed on the Great Lakes Including 70 Ton & Over Tug Operator; Assistant Hydraulic Dredge Engineer; Crane or Backhoe Operator; Hydraulic Dredge Leverman or Diver's Tender; Mechanic or Welder.	36.20	18.81	55.01
549	Work Performed on the Great Lakes Including Deck Equipment Operator or Machineryman (Maintains Cranes Over 50 Tons or Backhoes 115,000 Lbs. or more); Tug, Launch or Loader, Dozer or Like Equipment When Operated on a Barge, Breakwater Wall, Slip, Dock or Scow, Deck Machinery.	26.80	18.52	45.32
550	Work Performed on the Great Lakes Including Deck Equipment Operator; Machineryman or Fireman (Operates 4 Units or More or Maintains Cranes 50 Tons or Under or Backhoes 115,000 Lbs. or Under); Deck Hand, Deck Engineer or Assistant Tug Operator; Off Road Trucks - Great Lakes ONLY.	26.80	18.52	45.32

**HEAVY EQUIPMENT OPERATORS  
ASPHALT PAVEMENT OR OTHER WORK**

Fringe Benefits Must Be Paid On <u>All</u> Hours Worked		HOURLY BASIC RATE OF PAY	HOURLY FRINGE BENEFITS	TOTAL
<u>CODE</u>	<u>TRADE OR OCCUPATION</u>	\$	\$	\$
551	Crane, Tower Crane, Pedestal Tower or Derrick, With or Without Attachments, With a Lifting Capacity of Over 100 Tons, Self Erecting Tower Crane With a Lifting Capacity of Over 4,000 Lbs., Crane With Boom Dollies; Crane, Tower Crane, Pedestal Tower or Derrick, With Boom, Leads and/or Jlb Lengths Measuring 176 Ft or Over; Master Mechanic.	34.62	17.96	52.58
552	Backhoe (Track Type) Having a Mfgr.'s Rated Capacity of 130,000 Lbs. or Over; Caisson Rig; Crane, Tower Crane, Portable Tower, Pedestal Tower or Derrick, With or Without Attachments, With a Lifting Capacity of 100 Tons or Under, Self-Erecting Tower Crane With a Lifting Capacity Of 4,000 Lbs. & Under; Crane, Tower Crane, Portable Tower, Pedestal Tower or Derrick, With Boom, Leads &/or Jlb Lengths Measuring 175 Ft or Under; Dredge (NOT Performing Work on the Great Lakes); Licensed Boat Pilot (NOT Performing Work on the Great Lakes); Pile Driver. Future Increase(s): Add \$2/hr on 6/1/12; Add \$2/hr on 6/1/13; Add \$1.75/hr on 6/1/14. Premium Increase(s): DOT PREMIUMS: 1) Pay two times the hourly basic rate on Sunday, New Year's Day, Memorial Day, Independence Day, Labor Day, Thanksgiving Day & Christmas Day. 2) Add \$1.25/hr for work on projects involving temporary traffic control setup, for lane and shoulder closures, when work under artificial illumination conditions is necessary as required by the project provisions (including prep time prior to and/or cleanup after such time period).	33.72	18.90	52.62

Fringe Benefits Must Be Paid On <u>All</u> Hours Worked		HOURLY BASIC RATE OF PAY	HOURLY FRINGE BENEFITS	TOTAL
CODE	TRADE OR OCCUPATION	\$	\$	\$
553	Air, Track, Rotary or Percussion Drilling Machine &/or Hammers, Blaster; Asphalt Heater, Planer & Scarifier; Asphalt Milling Machine; Asphalt Screed; Backhoe (Track Type) Having a Mfgr.'s Rated Capacity of Under 130,000 Lbs., Backhoe (Mini, 15,000 Lbs. & Under); Bituminous (Asphalt) Plant & Paver, Screed; Boring Machine (Directional, Horizontal or Vertical); Bulldozer or Endloader; Concrete Breaker (Large, Auto, Vibratory/Sonic, Manual or Remote); Concrete Conveyor System; Concrete Laser/Screed; Concrete Slipform Placer Curb & Gutter Machine; Crane (Carry Deck, Mini) or Truck Mounted Hydraulic Crane (10 Tons or Under); Crane With a Lifting Capacity of 25 Tons or Under; Forestry Equipment, Timbco, Tree Shear, Tub Grinder, Processor; Gradall (Cruz-Aire Type); Grader or Motor Patrol; Hydro-Blaster (10,000 PSI or Over); Loading Machine (Conveyor); Manhoist; Material or Stack Hoist; Mechanic or Welder; Milling Machine; Post Hole Digger or Driver; Railroad Track Rail Levelling Machine, Tie Placer, Extractor, Tamper, Stone Leveler or Rehabilitation Equipment; Roller (Over 5 Ton); Scraper (Self Propelled or Tractor Drawn) 5 cu yds or More Capacity; Shoulder Widener; Sideboom; Skid Rig; Stabilizing or Concrete Mixer (Self-Propelled or 14S or Over); Tractor (Scraper, Dozer, Pusher, Loader); Tractor or Truck Mounted Hydraulic Backhoe; Trencher (Wheel Type or Chain Type); Tube Finisher; Tugger (NOT Performing Work on the Great Lakes); Winches & A-Frames. Future Increase(s): Add \$2/hr on 6/1/12; Add \$2/hr on 6/1/13; Add \$1.75/hr on 6/1/14.	32.67	18.55	51.22
554	Backfiller; Broom or Sweeper; Compactor (Self-Propelled or Tractor Mounted, Towed & Light Equipment); Concrete Finishing Machine (Road Type); Environmental Burner; Farm or Industrial Type Tractor; Fireman (Asphalt Plant, Pile Driver & Derrick NOT Performing Work on the Great Lakes); Forklift; Greaser; Hoist (Tugger, Automatic); Jeep Digger; Joint Sawyer (Multiple Blade); Launch (NOT Performing Work on the Great Lakes); Lift Slab Machine; Mechanical Float; Mulcher; Power Subgrader; Robotic Tool Carrier (With or Without Attachments); Roller (Rubber Tire, 5 Ton or Under); Self-Propelled Chip Spreader; Shouldering Machine; Skid Steer Loader (With or Without Attachments); Telehandler.	31.52	17.89	49.41
555	Air Compressor (&/or 400 CFM or Over); Air, Electric or Hydraulic Jacking System; Augers (Vertical & Horizontal); Automatic Belt Conveyor & Surge Bin; Boiler (Temporary Heat); Crusher, Screening or Wash Plant; Generator (&/or 150 KW or Over); Heaters (Mechanical); High Pressure Utility Locating Machine (Daylighting Machine); Mudjack; Oiler; Prestress Machine; Pug Mill; Pump (3 Inch or Over) or Well Points; Rock, Stone Breaker; Screed (Milling Machine); Stump Chipper; Tank Car Heaters; Vibratory Hammer or Extractor, Power Pack. Future Increase(s): Add \$2/hr on 6/1/12; Add \$2/hr on 6/1/13; Add \$1.75/hr on 6/1/14.	32.67	18.55	51.22
556	Fiber Optic Cable Equipment.	22.00	7.27	29.27

<b>RESIDENTIAL OR AGRICULTURAL CONSTRUCTION</b>
---

Includes single family houses or apartment buildings of no more than four (4) stories in height and all buildings, structures or facilities that are primarily used for agricultural or farming purposes, excluding commercial buildings. For classification purposes, the exterior height of a residential building, in terms of stories, is the primary consideration. All incidental items such as site work, driveways, parking lots, private sidewalks, private septic systems or sewer and water laterals connected to a public system and swimming pools are included within this definition. Residential buildings of five (5) stories and above are NOT included within this definition.

<b>SKILLED TRADES</b>
-----------------------

Fringe Benefits Must Be Paid On <u>All</u> Hours Worked		HOURLY BASIC RATE OF PAY	HOURLY FRINGE BENEFITS	TOTAL
<u>CODE</u>	<u>TRADE OR OCCUPATION</u>	\$	\$	\$
101	Acoustic Ceiling Tile Installer	27.00	2.47	29.47
102	Bollermaker	31.09	23.75	54.84
103	Bricklayer, Blocklayer or Stonemason	32.00	3.00	35.00
104	Cabinet Installer	22.00	2.74	24.74
105	Carpenter	27.00	3.46	30.46
106	Carpet Layer or Soft Floor Coverer	23.95	2.78	26.73
107	Cement Finisher	21.33	4.25	25.58
108	Drywall Taper or Finisher	23.80	1.55	25.35
109	Electrician	22.00	9.18	31.18
110	Elevator Constructor	43.79	25.48	69.27
111	Fence Erector	17.64	4.33	21.97
112	Fire Sprinkler Fitter	36.39	16.97	53.36
113	Glazier	36.23	11.22	47.45
114	Heat or Frost Insulator	29.04	19.73	48.77
115	Insulator (Batt or Blown)	18.95	1.70	20.65
116	Ironworker	30.90	19.11	50.01
117	Lather	28.15	15.14	43.29
119	Marble Finisher	31.16	16.27	47.43
120	Marble Mason	32.66	16.20	48.86
121	Metal Building Erector	17.50	2.80	20.30
123	Overhead Door Installer	17.00	0.00	17.00
124	Painter	25.65	6.33	31.98
125	Pavement Marking Operator	26.00	0.00	26.00

<b>Fringe Benefits Must Be Paid On <u>All</u> Hours Worked</b>		<b>HOURLY BASIC RATE OF PAY</b>	<b>HOURLY FRINGE BENEFITS</b>	<b>TOTAL</b>
<b>CODE</b>	<b>TRADE OR OCCUPATION</b>	<b>\$</b>	<b>\$</b>	<b>\$</b>
129	Plasterer	19.00	0.29	19.29
130	Plumber	30.00	10.34	40.34
132	Refrigeration Mechanic	30.96	0.00	30.96
133	Roofer or Waterproofer	29.85	1.55	31.40
134	Sheet Metal Worker	21.03	3.40	24.43
135	Steamfitter	32.59	11.05	43.64
137	Teledata Technician or Installer	19.23	5.32	24.55
138	Temperature Control Installer	22.45	4.11	26.56
139	Terrazzo Finisher	18.00	5.35	23.35
140	Terrazzo Mechanic	31.16	16.27	47.43
141	Tile Finisher	23.96	13.36	37.32
142	Tile Setter	21.00	0.00	21.00
143	Tuckpointer, Caulker or Cleaner	23.96	12.88	36.84
146	Well Driller or Pump Installer	15.10	12.38	27.48
147	Siding Installer	18.80	1.42	20.22

---

**TRUCK DRIVERS**

---

<b>Fringe Benefits Must Be Paid On <u>All</u> Hours Worked</b>		<b>HOURLY BASIC RATE OF PAY</b>	<b>HOURLY FRINGE BENEFITS</b>	<b>TOTAL</b>
<b>CODE</b>	<b>TRADE OR OCCUPATION</b>	<b>\$</b>	<b>\$</b>	<b>\$</b>
201	Single Axle or Two Axle	19.86	2.54	22.40
203	Three or More Axle	19.50	14.27	33.77
205	Pavement Marking Vehicle	19.25	10.84	30.09
207	Truck Mechanic	19.00	1.75	20.75

---

**LABORERS**

---

<b>Fringe Benefits Must Be Paid On <u>All</u> Hours Worked</b>		<b>HOURLY BASIC RATE OF PAY</b>	<b>HOURLY FRINGE BENEFITS</b>	<b>TOTAL</b>
<b>CODE</b>	<b>TRADE OR OCCUPATION</b>	<b>\$</b>	<b>\$</b>	<b>\$</b>
301	General Laborer	16.09	7.18	23.27
302	Asbestos Abatement Worker	17.00	2.21	19.21
303	Landscaper	25.00	0.54	25.54

311	Fiber Optic Laborer (Outside, Other Than Concrete Encased)	16.51	0.00	16.51
-----	--	-------	------	-------

**HEAVY EQUIPMENT OPERATORS  
RESIDENTIAL OR AGRICULTURAL CONSTRUCTION**

Fringe Benefits Must Be Paid On All Hours Worked

<u>CODE</u>	<u>TRADE OR OCCUPATION</u>	<u>HOURLY BASIC RATE OF PAY</u> \$	<u>HOURLY FRINGE BENEFITS</u> \$	<u>TOTAL</u> \$
557	Asphalt Heater, Planer & Scarifier; Asphalt Milling Machine; Asphalt Screed; Backhoe (Track Type); Backhoe (Mini, 15,000 Lbs. & Under); Bituminous (Asphalt) Plant & Paver, Screed; Boring Machine (Directional, Horizontal or Vertical); Bulldozer or Endloader; Concrete Breaker (Large, Auto, Vibratory/Sonic, Manual or Remote); Concrete Bump Cutter, Grinder, Planing or Grooving Machine; Concrete Conveyor System; Concrete Laser/Screed; Concrete Paver (Slipform); Concrete Pump, Concrete Conveyor (Rotec or Bidwell Type); Concrete Slipform Placer Curb & Gutter Machine; Concrete Spreader & Distributor; Crane (Carry Deck, Mini) or Truck Mounted Hydraulic Crane (10 Tons or Under); Crane With a Lifting Capacity of 25 Tons or Under; Crane, Shovel, Dragline, Clamshells; Forestry Equipment, Timberco, Tree Shear, Tub Grinder, Processor; Grader or Motor Patrol; Grout Pump; Hydro-Blaster (10,000 PSI or Over); Loading Machine (Conveyor); Manhoist; Material or Stack Hoist; Mechanic or Welder; Milling Machine; Roller (Over 5 Ton); Scraper (Self Propelled or Tractor Drawn) 5 cu yds or More Capacity; Shoulder Widener; Skid Rig; Stabilizing or Concrete Mixer (Self-Propelled or 14S or Over); Tractor (Scraper, Dozer, Pusher, Loader); Tractor or Truck Mounted Hydraulic Backhoe; Tractor or Truck Mounted Hydraulic Crane (10 Tons or Under); Trencher (Wheel Type or Chain Type); Winches & A-Frames.	29.45	15.37	44.82
558	Air Compressor (&/or 400 CFM or Over); Air, Electric or Hydraulic Jacking System; Backfiller; Belting, Burlap, Texturing Machine; Boiler (Temporary Heat); Broom or Sweeper; Compactor (Self-Propelled or Tractor Mounted, Towed & Light Equipment); Concrete Finishing Machine (Road Type); Farm or Industrial Type Tractor; Forklift; Generator (&/or 150 KW or Over); Heaters (Mechanical); High Pressure Utility Locating Machine (Daylighting Machine); Jeep Digger; Lift Slab Machine; Mulcher; Oiler; Post Hole Digger or Driver; Power Subgrader; Pump (3 Inch or Over) or Well Points; Robotic Tool Carrier (With or Without Attachments); Rock, Stone Breaker; Roller (Rubber Tire, 5 Tons or Under); Screed (Milling Machine); Self Propelled Chip Spreader; Shouldering Machine; Skid Steer Loader (With or Without Attachments); Stump Chipper; Telehandler; Vibratory Hammer or Extractor, Power Pack.	26.45	14.35	40.80

\*\*\*\*\* END OF RATES \*\*\*\*\*