

Madison, Wisconsin

# CITY OF MADISON

## MADISON WATER UTILITY DEPARTMENT OF PUBLIC WORKS

### PLAN OF PROPOSED IMPROVEMENT

#### SEGOE ROAD WATER MAIN 2012

CITY PROJECT NO. 53W1487  
CONTRACT NO. 6934

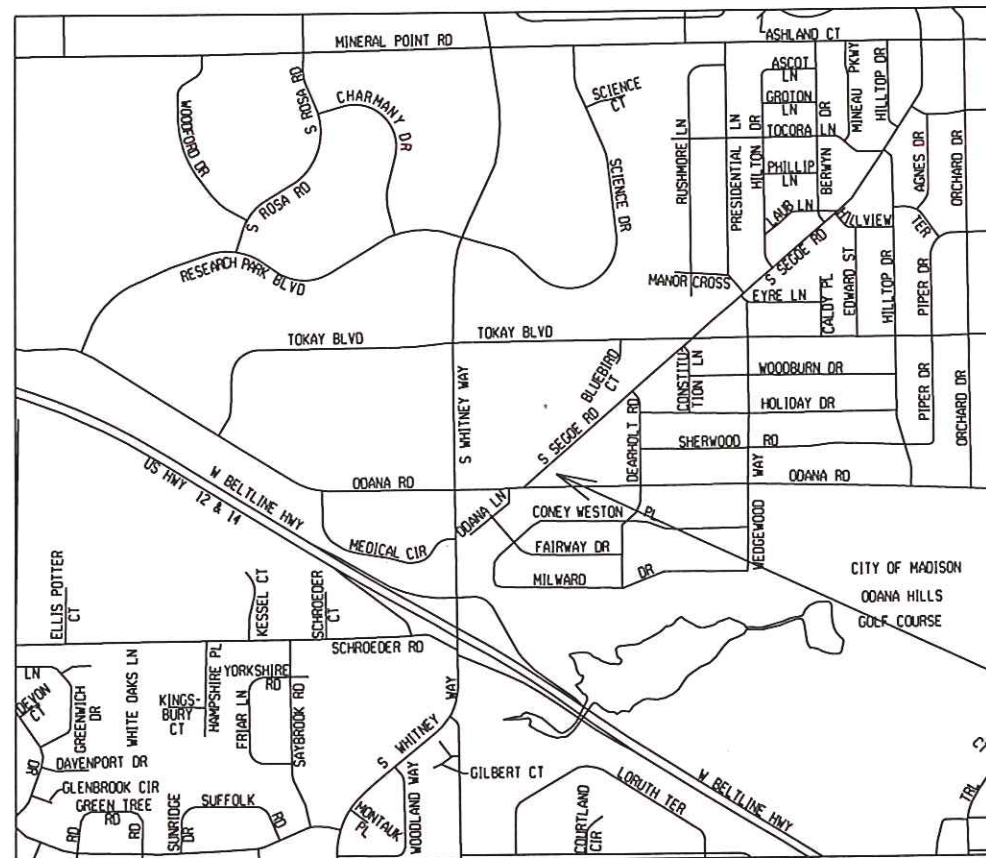
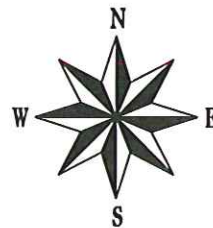
**INDEX OF SHEETS**

SHEET NO.	TITLE
0	
A-1	ALIGNMENT AND CONTROL DETAILS
W-1	SEGOE RD WATER PLAN AND PROFILE
W-2	SEGOE RD WATER IMPACT ANALYSIS
W-3	MATERIALS ESTIMATE AND DETAILS

**CONVENTIONAL SIGNS**

FIELD VERIFY ALL UTILITY LOCATIONS

GAS	— G —
STORM SEWER	— ST —
SANITARY SEWER	— SAN —
WATER	— W —
OVERHEAD ELECTRIC	— OH —
POWER POLE	⊥
ADA COMPLIANT RAMP W/ DETECTABLE WARNING FIELD	▬
COMBUSTIBLE FLUIDS	



**PROJECT  
LOCATION**

PUBLIC IMPROVEMENT PROJECT APPROVED

AUGUST 7, 2012

BY THE COMMON COUNCIL  
OF MADISON, WISCONSIN

PUBLIC IMPROVEMENT DESIGN  
APPROVED BY:

 8/2/12  
Water Utility Engineer Date

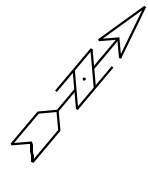
WATER  
DESIGNED BY:



NOTES:

ALIGNMENT AND CONTROL DETAILS

SEGOE ROAD CITY OF MADISON  
PM: DENNIS CAWLEY DESIGNER: PEH



PLOT SCALE: .....  
PLOT NAME: .....  
REV. DATE: .....

IRON ROD  
N = 473883.44  
E = 797841.59  
ELEV = 1007.54

IRON ROD  
N = 473908.02  
E = 797907.75  
ELEV = 1006.93

IRON PIPE  
N = 474160.09  
E = 798203.75  
ELEV = 1012.49

BOP Sta = 50+00.00  
N = 473856.08  
E = 797894.87

51+00

52+00

53+00

54+00

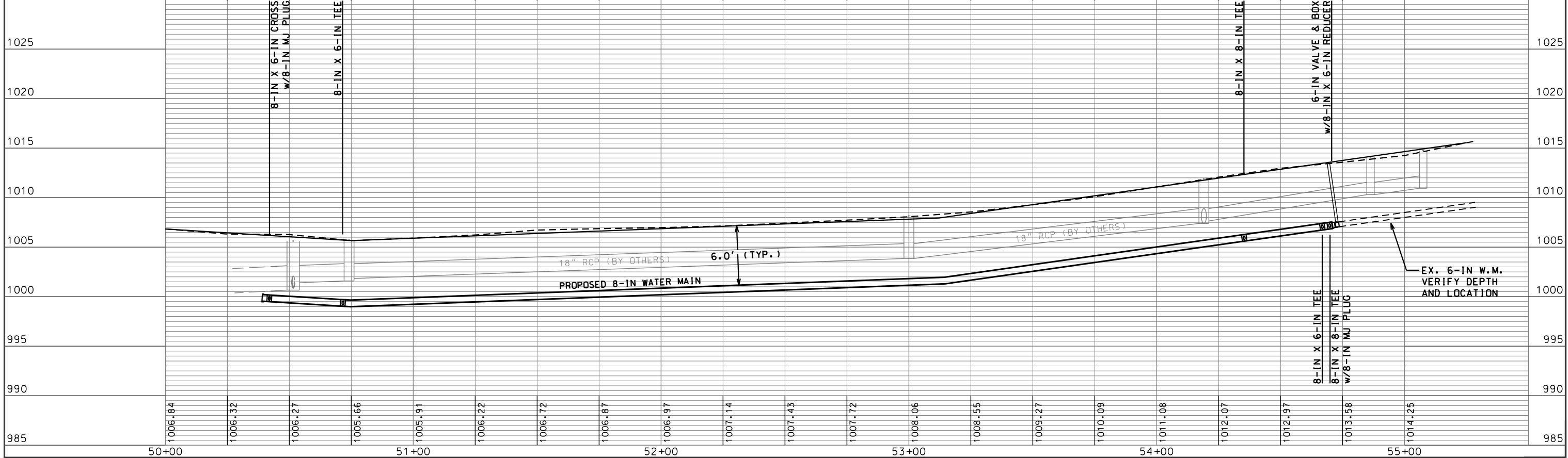
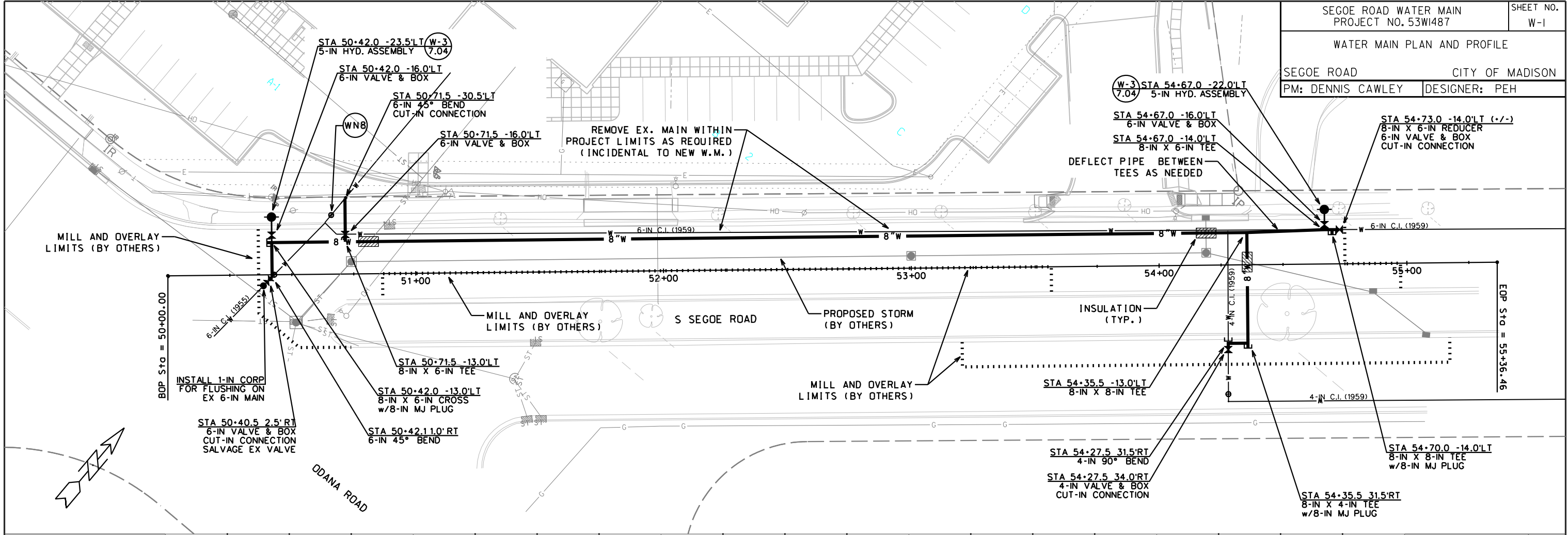
55+00

S SEGOE ROAD

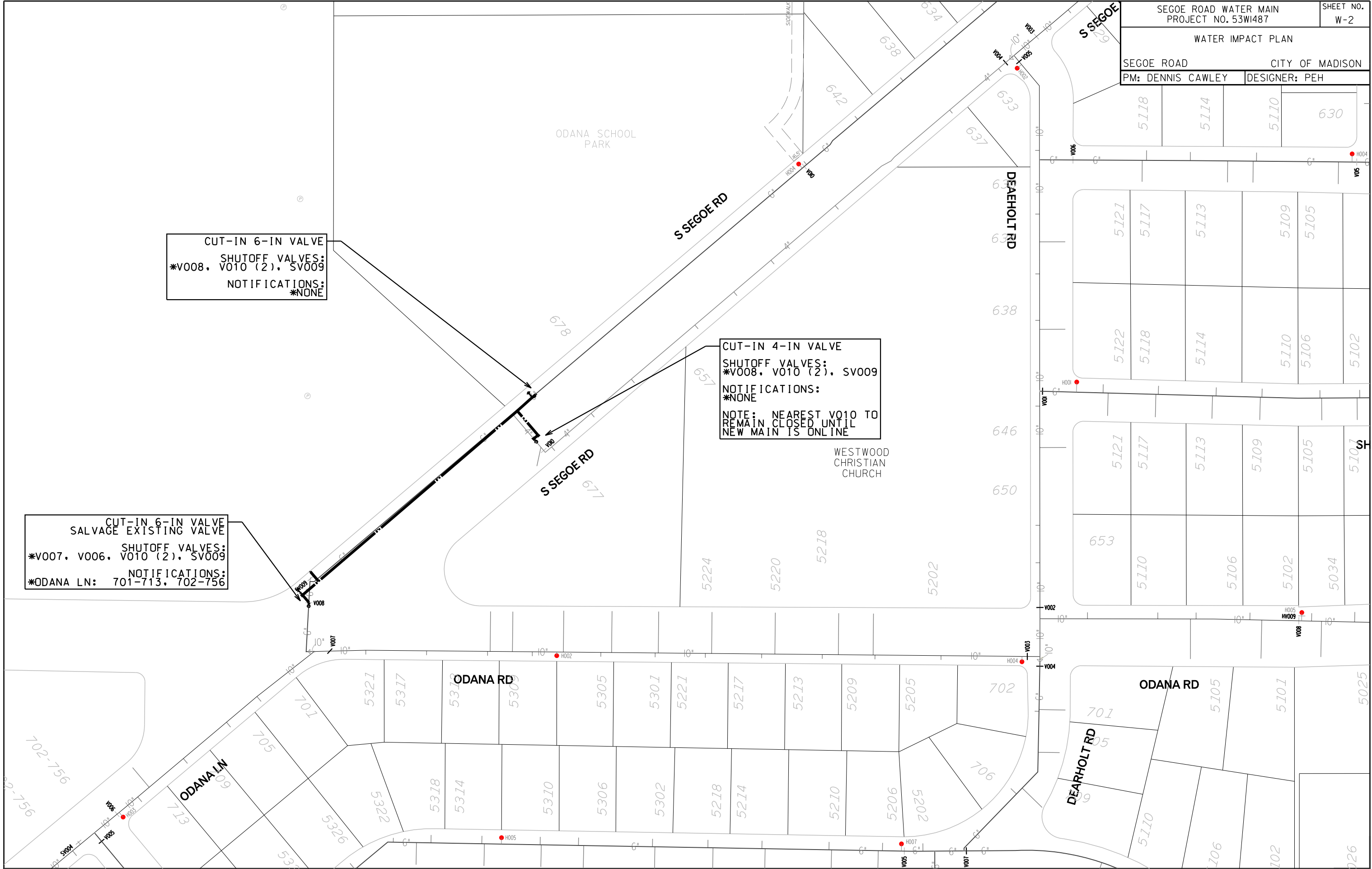
EOP Sta = 55+36.46  
N = 474205.12  
E = 798302.25

ODANA ROAD

ORIGINATOR: CITY OF MADISON, STREETS DIVISION



ORIGINATOR: CITY OF MADISON, STREETS DIVISION  
 PLOT SCALE: 1"=40'  
 PLOT NAME: 53WI487.W-1  
 REV. DATE:



PLOT SCALE:

PLOT NAME:

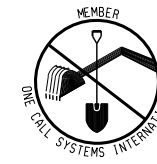
REV. DATE:

ORIGINATOR: CITY OF MADISON, STREETS DIVISION



**CONSTRUCTION NOTES:**

1. CONSTRUCT NEW WATER MAIN 6.0' BELOW FINISHED GRADE, UNLESS OTHERWISE NOTED. INSULATE MAIN WITH POLYSTYRENE BOARD AT UTILITY CROSSINGS OR OTHER AREAS IDENTIFIED BY ENGINEER AS HAVING INADEQUATE COVER.
  2. VERIFY SIZE OF EXISTING WATER SERVICES AND RECONNECT SERVICES AS INDICATED.
  3. MINIMIZE DISTRUPTION OF SERVICE TO EXISTING CUSTOMERS. NOTIFY PER CONTRACT REQUIREMENTS OF ANY PLANNED WATER OUTAGE.
  4. EXISTING WATER MAIN SHALL REMAIN IN SERVICE UNTIL NEW WATER MAIN IS TESTED AND ACCEPTED BY MADISON WATER UTILITY AND ALL SERVICES ARE RECONNECTED.
  5. THE EXISTING UTILITIES SHOWN ON THIS PLAN REPRESENT THE BEST INFORMATION AVAILABLE TO THE WATER UTILITY AT THE TIME OF PLAN PREPARATION. CONTRACTOR IS RESPONSIBLE FOR HAVING EACH UTILITY LOCATED PRIOR TO COMMENCING WORK.
- WN1 REPLACE THE EXISTING LEAD SERVICE WITH A NEW COPPER SERVICE.
  - WN2 EXTEND AND RECONNECT THE EXISTING COPPER SERVICE TO THE NEW WATER MAIN.
  - WN3 EXISTING SERVICE TO BE ABANDONED WHEN THE WATER MAIN IS CUT OFF.
  - WN4 DISCONNECT FROM THE OLD WATER MAIN AND RECONNECT THE EXISTING COPPER WATER SERVICE LATERAL TO THE NEW WATER MAIN.
  - WN5 RELOCATE THE EXISTING FIRE HYDRANT.
  - WN6 ABANDON WATER VALVE ACCESS STRUCTURE.
  - WN7 FURNISH AND INSTALL THE NEW TOP SECTION FOR THE WATER ACCESS STRUCTURE.
  - WN8 ABANDON THE VALVE BOX.
  - WN9 FURNISH THE DITCH, COMPACTION, AND ALL MATERIALS AND LABOR FOR THE INSTALLATION OF NEW SERVICE LATERAL.
  - WN10 REMOVE AND SALVAGE EXISTING HYDRANT
  - WN11 REPLACE THE EXISTING COPPER SERVICE WITH A COPPER SERVICE.



TO OBTAIN LOCATION OF PARTICIPANTS' UNDERGROUND FACILITIES BEFORE YOU DIG IN WISCONSIN

**CALL DIGGERS HOTLINE 811**  
or 1-800-242-8511  
**TOLL FREE**  
FAX-A-LOCATE 1-800-338-3860  
TDD (FOR HEARING IMPAIRED) 1-800-542-2289  
WIS. STATUTE 182.0175 (1974)  
REQUIRES MIN. OF 3 WORK DAYS NOTICE BEFORE YOU EXCAVATE.

**ESTIMATE OF MATERIALS SUPPLIED BY CONTRACTOR:**

\* ESTIMATE OF MATERIALS IS FOR INFORMATION ONLY. ENGINEER DOES NOT GUARANTEE ACCURACY OF MATERIAL TAKE-OFF.

- 18-FT - 4-IN PIPE
- 54-FT - 6-IN PIPE
- 486-FT - 8-IN PIPE
- 620-FT - POLYWRAP
- 2 - 5-IN HYDRANT
- 1 - 4-IN VALVE AND BOX
- 5 - 6-IN VALVE AND BOX
- 1 - 8-IN X 4-IN TEE
- 2 - 8-IN X 6-IN TEE
- 2 - 8-IN X 8-IN TEE
- 1 - 8-IN X 6-IN CROSS
- 3 - 8-IN MJ PLUG
- 1 - 4-IN CAP
- 3 - 6-IN CAP
- 1 - 4-IN 90° BEND
- 1 - 6-IN 45° BEND
- 1 - 8-IN X 6-IN REDUCER
- 1 - 1" CORP

