

Madison, Wisconsin

# CITY OF MADISON

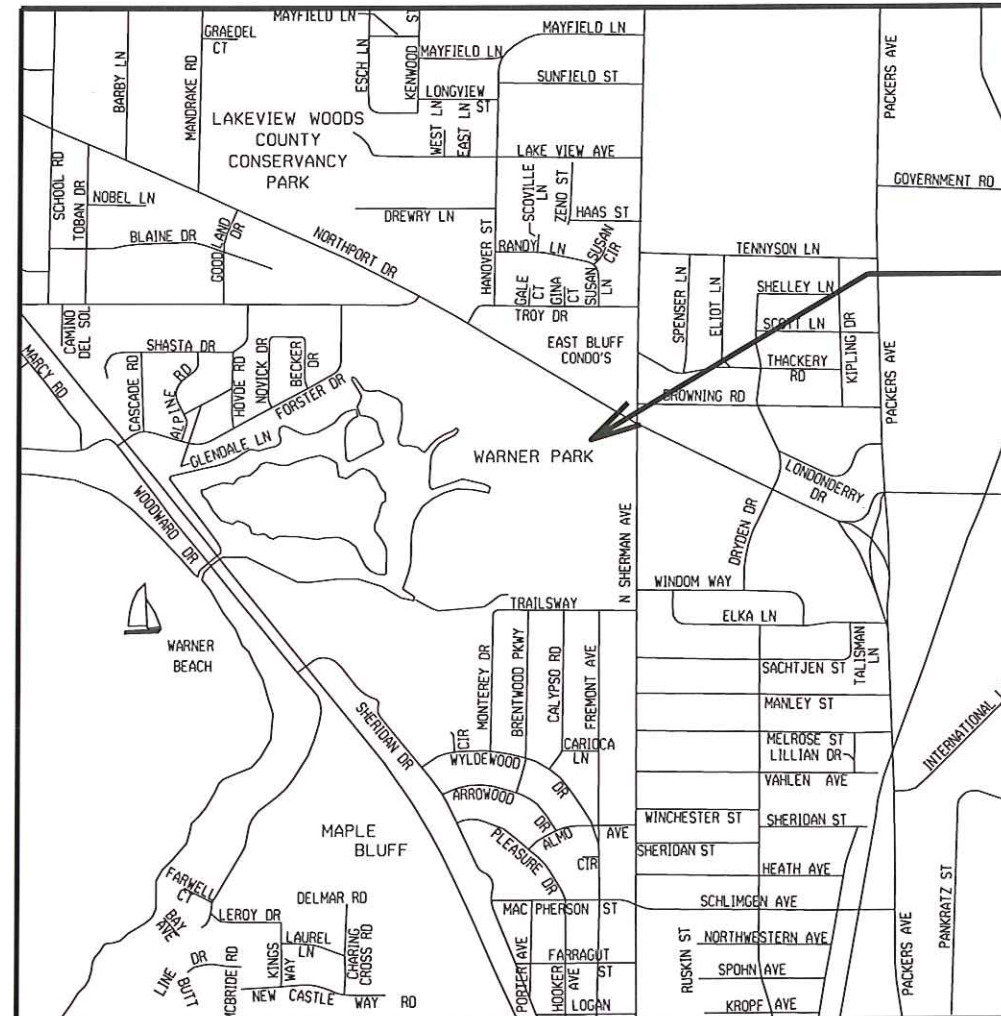
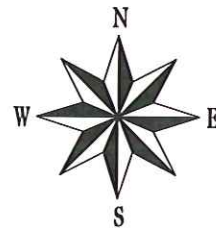
## MADISON WATER UTILITY DEPARTMENT OF PUBLIC WORKS PLAN OF PROPOSED IMPROVEMENT

### WARNER PARK SERVICE METER AND ENCLOSURE INSTALLATION 2013

CITY PROJECT NO. 53WI586  
CONTRACT NO. 7040

#### INDEX OF SHEETS

SHEET NO.	TITLE
0	SITE PLAN SURVEY
W-1	SITE PLAN
W-2	METER PIPING AND ENCLOSURE DETAIL
W-3	METER AND ENCLOSURE PROFILE DETAILS
W-4	FOUNDATION WORK
W-5	ENCLOSURE LAYOUT
W-6	ENCLOSURE ELEVATIONS



CONSTRUCTION  
PROJECT LOCATION

CONVENTIONAL SIGNS	
FIELD VERIFY ALL UTILITY LOCATIONS	
GAS	— G —
STORM SEWER	— ST —
SANITARY SEWER	— SAN —
WATER	— W —
OVERHEAD ELECTRIC	— OH —
POWER POLE	□
ADA COMPLIANT RAMP W/ DETECTABLE WARNING FIELD	□
COMBUSTIBLE FLUIDS	☀

PUBLIC IMPROVEMENT PROJECT APPROVED

FEBRUARY 5, 2013

BY THE COMMON COUNCIL  
OF MADISON, WISCONSIN

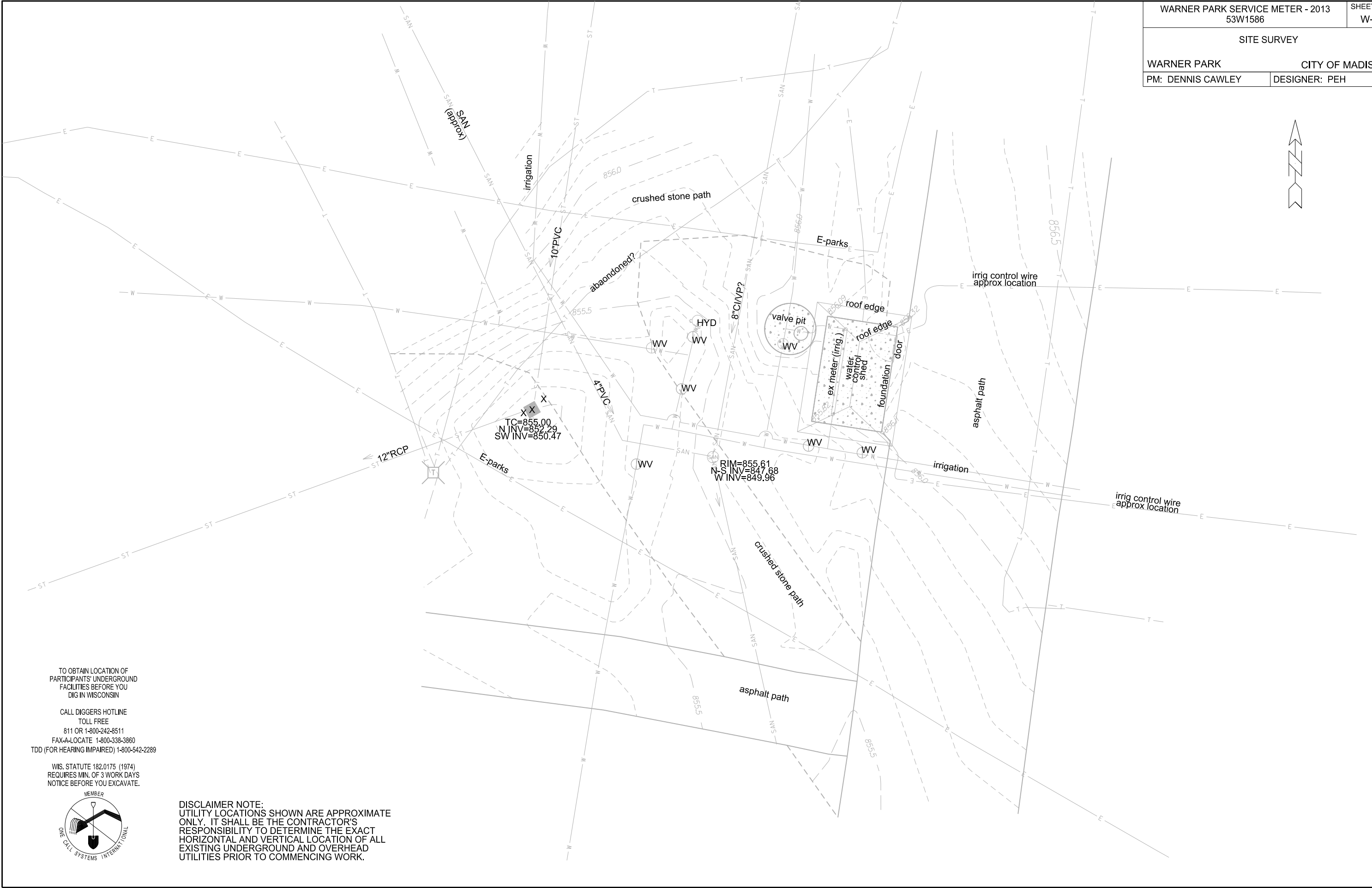
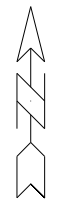
DESIGN APPROVED BY:

*[Signature]* 2/7/13  
Principal Engineer Date

DESIGNED BY:



WARNER PARK SERVICE METER - 2013 53W1586		SHEET NO. W-1
SITE SURVEY		
WARNER PARK		CITY OF MADISON
PM: DENNIS CAWLEY	DESIGNER: PEH	



PLOT SCALE: 1" = 10'

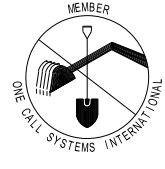
PLOT NAME:

REV. DATE:

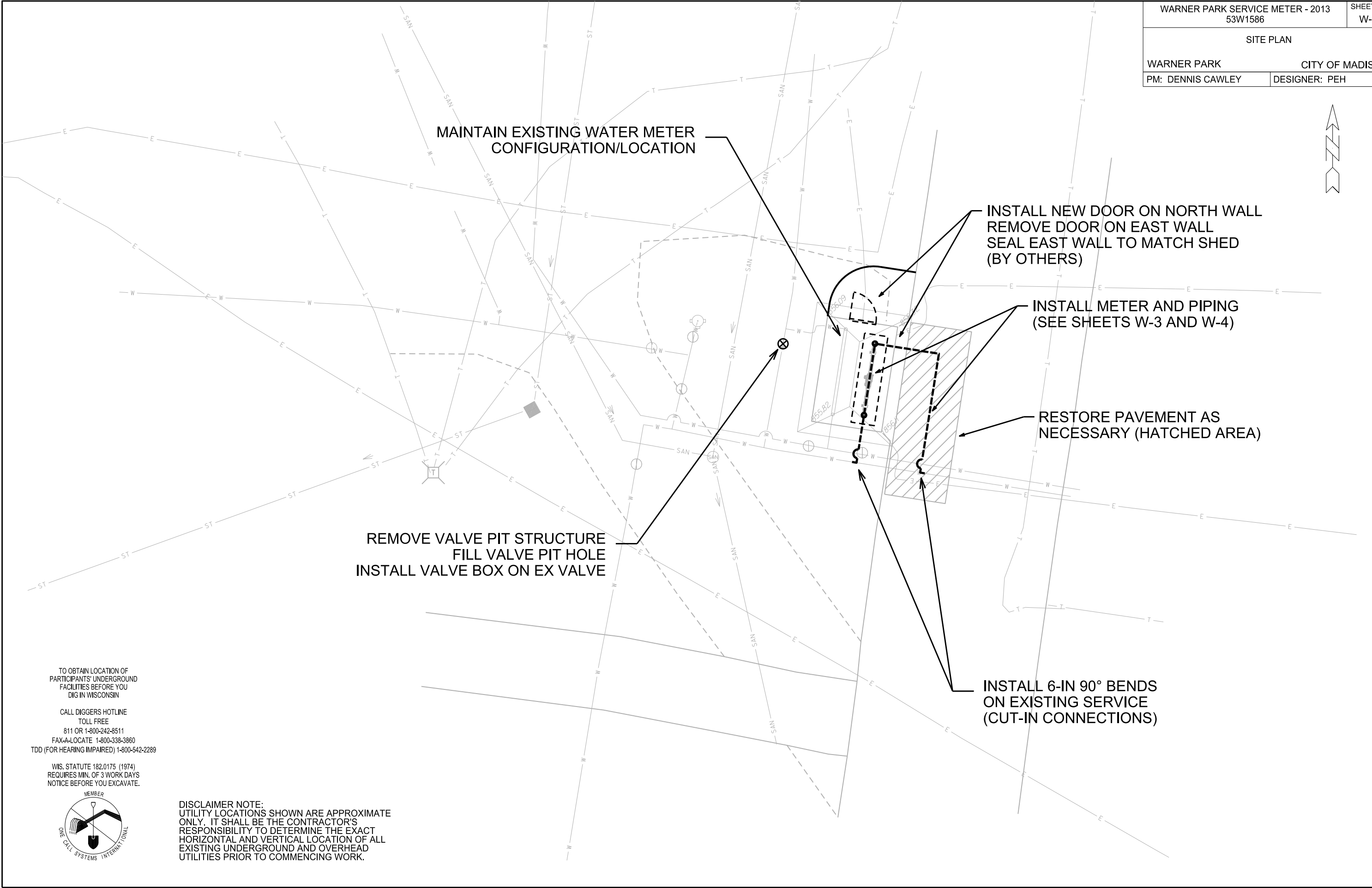
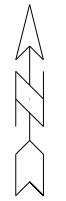
ORIGINATOR: CITY OF MADISON WATER UTILITY

TO OBTAIN LOCATION OF PARTICIPANTS' UNDERGROUND FACILITIES BEFORE YOU DIG IN WISCONSIN  
 CALL DIGGERS HOTLINE  
 TOLL FREE  
 811 OR 1-800-242-8511  
 FAX-A-LOCATE 1-800-338-3860  
 TDD (FOR HEARING IMPAIRED) 1-800-542-2289

WIS. STATUTE 182.0175 (1974)  
 REQUIRES MIN. OF 3 WORK DAYS  
 NOTICE BEFORE YOU EXCAVATE.



DISCLAIMER NOTE:  
 UTILITY LOCATIONS SHOWN ARE APPROXIMATE ONLY. IT SHALL BE THE CONTRACTOR'S RESPONSIBILITY TO DETERMINE THE EXACT HORIZONTAL AND VERTICAL LOCATION OF ALL EXISTING UNDERGROUND AND OVERHEAD UTILITIES PRIOR TO COMMENCING WORK.



MAINTAIN EXISTING WATER METER CONFIGURATION/LOCATION

INSTALL NEW DOOR ON NORTH WALL  
REMOVE DOOR ON EAST WALL  
SEAL EAST WALL TO MATCH SHED (BY OTHERS)

INSTALL METER AND PIPING (SEE SHEETS W-3 AND W-4)

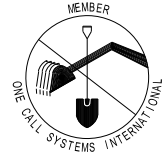
RESTORE PAVEMENT AS NECESSARY (HATCHED AREA)

REMOVE VALVE PIT STRUCTURE  
FILL VALVE PIT HOLE  
INSTALL VALVE BOX ON EX VALVE

INSTALL 6-IN 90° BENDS ON EXISTING SERVICE (CUT-IN CONNECTIONS)

TO OBTAIN LOCATION OF PARTICIPANTS' UNDERGROUND FACILITIES BEFORE YOU DIG IN WISCONSIN  
CALL DIGGERS HOTLINE  
TOLL FREE  
811 OR 1-800-242-8511  
FAX-A-LOCATE 1-800-338-3860  
TDD (FOR HEARING IMPAIRED) 1-800-542-2289

WIS. STATUTE 182.0175 (1974)  
REQUIRES MIN. OF 3 WORK DAYS  
NOTICE BEFORE YOU EXCAVATE.



DISCLAIMER NOTE:  
UTILITY LOCATIONS SHOWN ARE APPROXIMATE ONLY. IT SHALL BE THE CONTRACTOR'S RESPONSIBILITY TO DETERMINE THE EXACT HORIZONTAL AND VERTICAL LOCATION OF ALL EXISTING UNDERGROUND AND OVERHEAD UTILITIES PRIOR TO COMMENCING WORK.

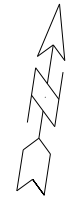
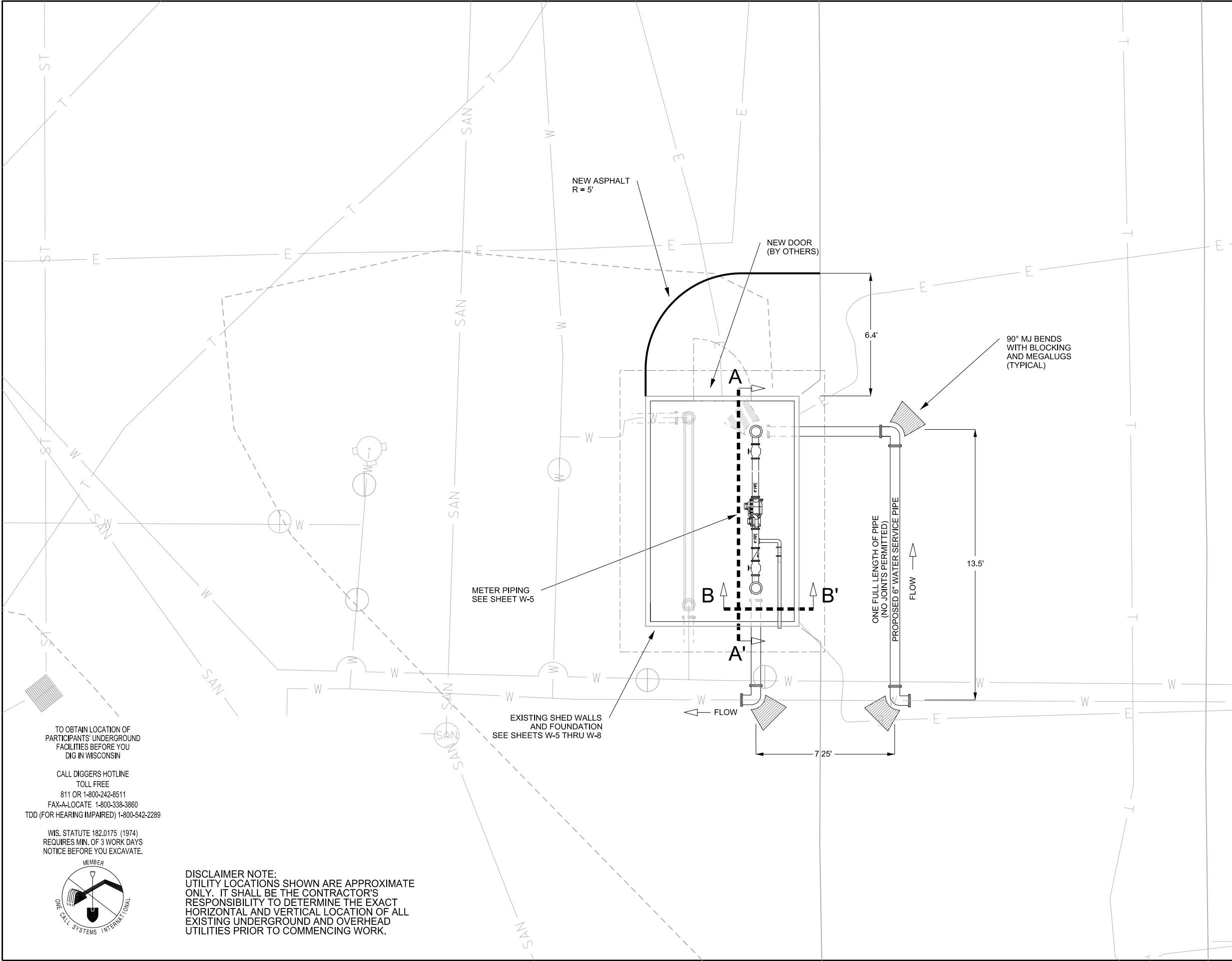
PLOT SCALE: 1" = 10'

PLOT NAME:

REV. DATE:

ORIGINATOR: CITY OF MADISON WATER UTILITY

- NOTES:
- 1) ALL UNDERGROUND PIPING SHALL BE MECHANICAL JOINT WITH MEGA-LUGS.
  - 2) ALL UNDERGROUND PIPING SHALL BE CLASS 52 DUCTILE IRON WITH POLY WRAP.
  - 3) SEE SHEET W-4 FOR SECTIONS A-A' AND B-B'.
  - 4) RESTORE ALL PAVEMENT REMOVED FOR PIPE INSTALLATIONS (SEE W-2).



PLOT SCALE: 1" = 5'

PLOT NAME:

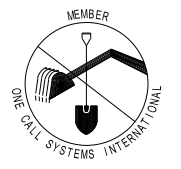
REV. DATE:

ORIGINATOR: CITY OF MADISON WATER UTILITY

TO OBTAIN LOCATION OF PARTICIPANTS' UNDERGROUND FACILITIES BEFORE YOU DIG IN WISCONSIN

CALL DIGGERS HOTLINE TOLL FREE  
811 OR 1-800-242-8511  
FAX-A-LOCATE 1-800-338-3860  
TDD (FOR HEARING IMPAIRED) 1-800-542-2289

WIS. STATUTE 182.0175 (1974)  
REQUIRES MIN. OF 3 WORK DAYS  
NOTICE BEFORE YOU EXCAVATE.

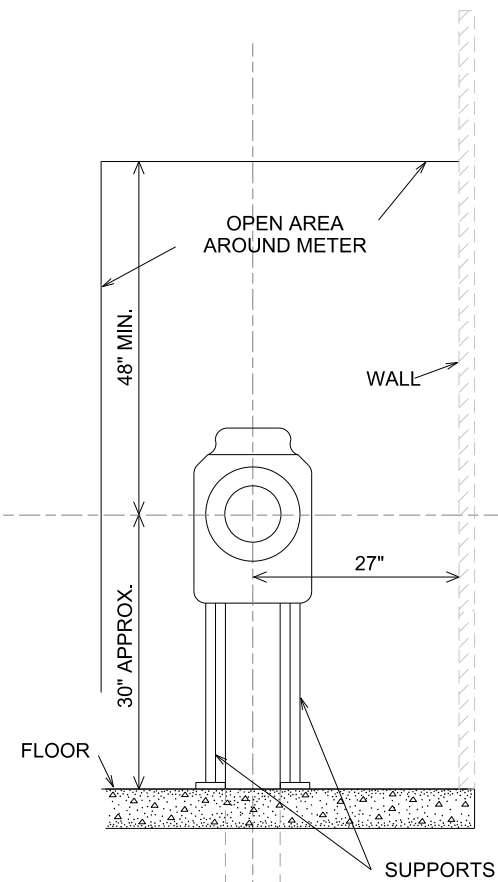


DISCLAIMER NOTE:  
UTILITY LOCATIONS SHOWN ARE APPROXIMATE ONLY. IT SHALL BE THE CONTRACTOR'S RESPONSIBILITY TO DETERMINE THE EXACT HORIZONTAL AND VERTICAL LOCATION OF ALL EXISTING UNDERGROUND AND OVERHEAD UTILITIES PRIOR TO COMMENCING WORK.

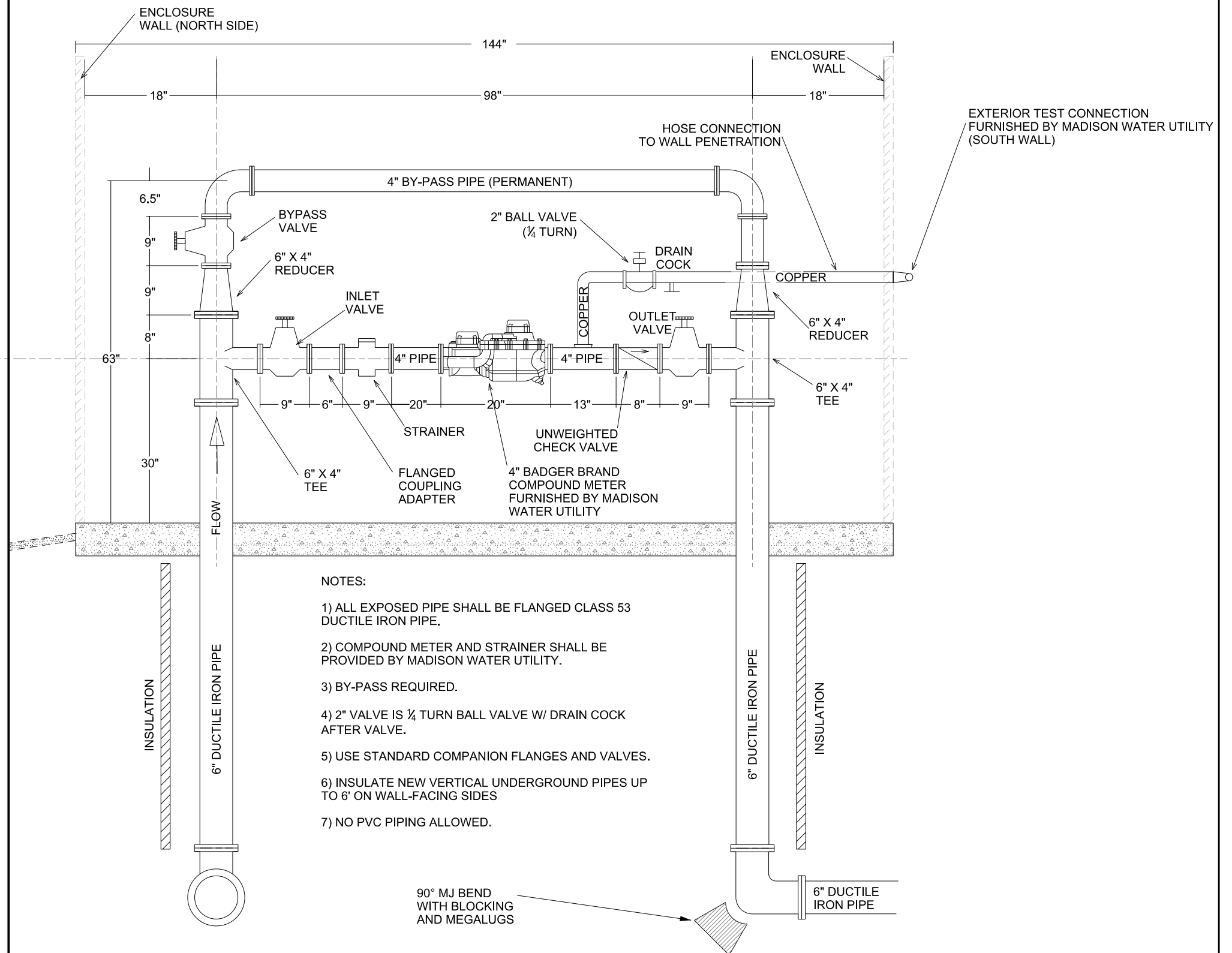
4" BADGER COMPOUND METER				
METER SIZE	METER WEIGHT	METER LAY LENGTH	STRAINER LAY LENGTH	FLOW RATE
4"	85.0 lbs	20"	9"	0.75 - 1000 GPM

WARNER PARK SERVICE METER - 2013 53W1586		SHEET NO. W-4
METER AND ENCLOSURE PROFILE DETAILS		
WARNER PARK		CITY OF MADISON
PM: DENNIS CAWLEY	DESIGNER: PEH	

### SHED SECTION B-B'



### SHED SECTION A-A'



**NOTES:**

- 1) ALL EXPOSED PIPE SHALL BE FLANGED CLASS 53 DUCTILE IRON PIPE.
- 2) COMPOUND METER AND STRAINER SHALL BE PROVIDED BY MADISON WATER UTILITY.
- 3) BY-PASS REQUIRED.
- 4) 2" VALVE IS 1/4 TURN BALL VALVE W/ DRAIN COCK AFTER VALVE.
- 5) USE STANDARD COMPANION FLANGES AND VALVES.
- 6) INSULATE NEW VERTICAL UNDERGROUND PIPES UP TO 6' ON WALL-FACING SIDES
- 7) NO PVC PIPING ALLOWED.

PLOT SCALE: N/A

PLOT NAME: \_\_\_\_\_

REV. DATE: \_\_\_\_\_

ORIGINATOR: CITY OF MADISON WATER UTILITY

FOUNDATION WORK

WARNER PARK

CITY OF MADISON

PM: DENNIS CAWLEY

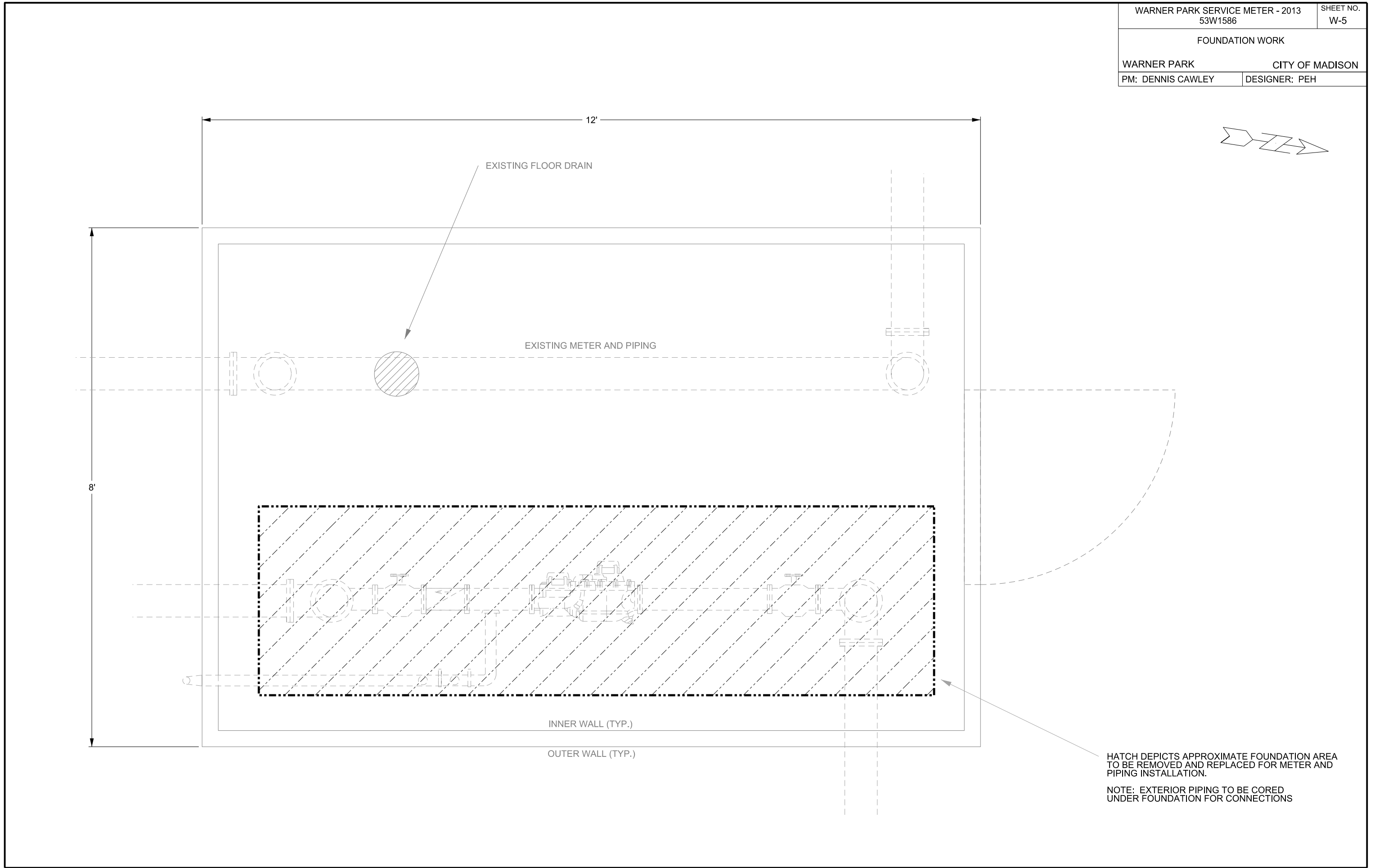
DESIGNER: PEH

PLOT SCALE: N/A

PLOT NAME: \_\_\_\_\_

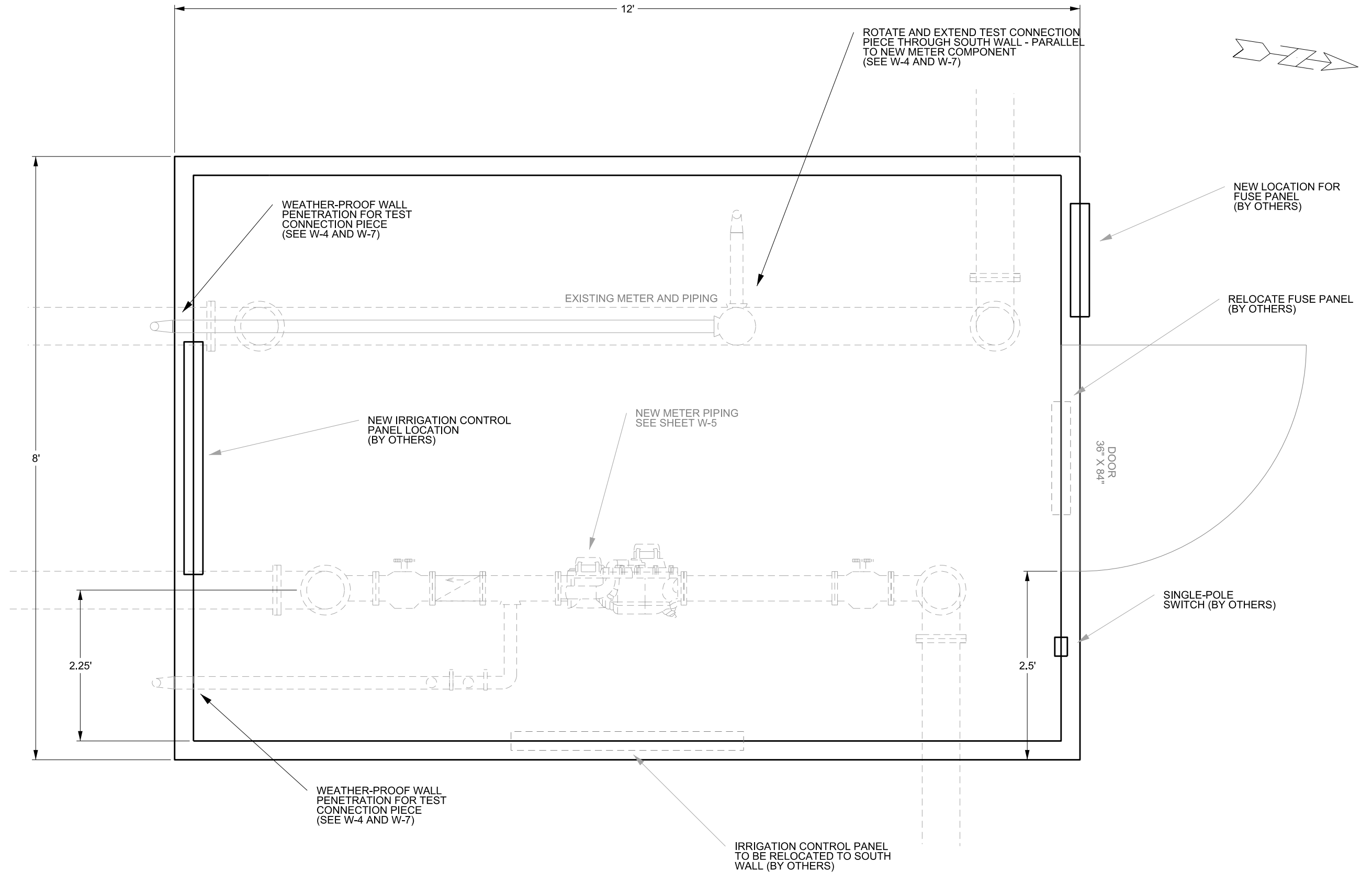
REV. DATE: \_\_\_\_\_

ORIGINATOR: CITY OF MADISON WATER UTILITY



HATCH DEPICTS APPROXIMATE FOUNDATION AREA TO BE REMOVED AND REPLACED FOR METER AND PIPING INSTALLATION.

NOTE: EXTERIOR PIPING TO BE CORED UNDER FOUNDATION FOR CONNECTIONS



PLOT SCALE: N/A

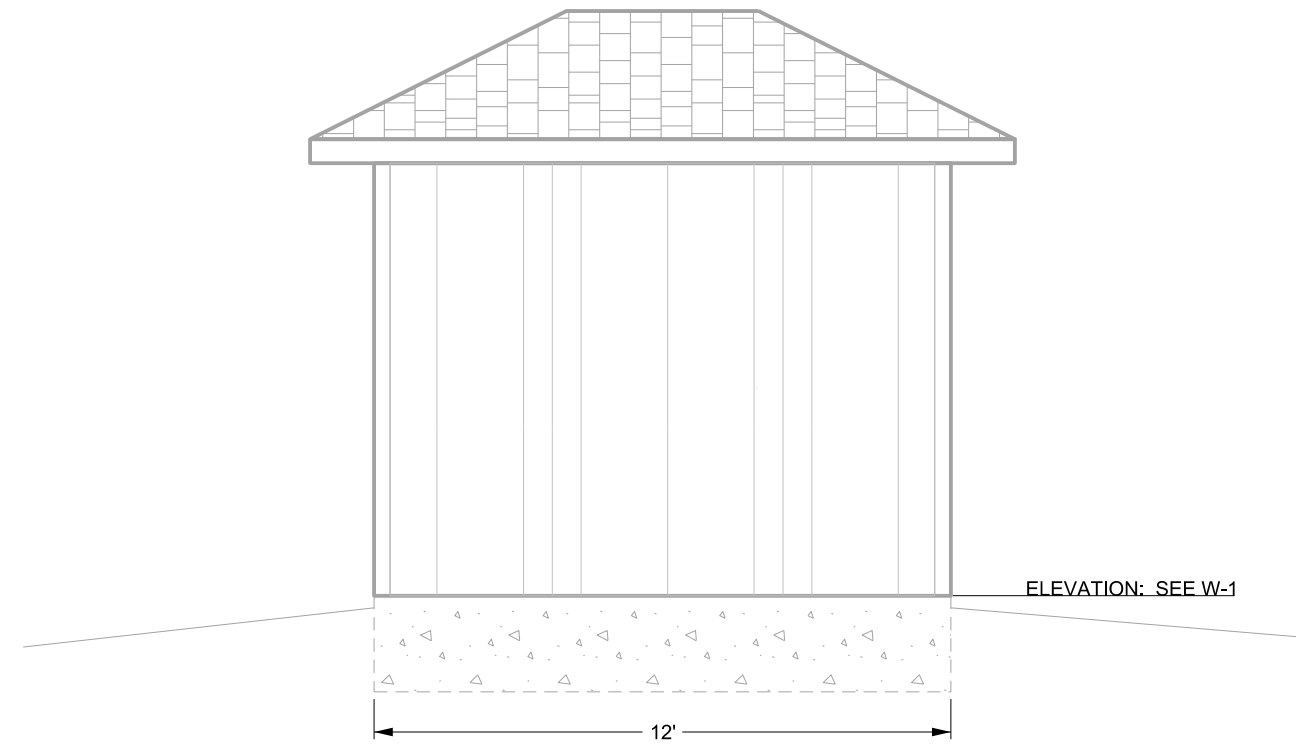
PLOT NAME: \_\_\_\_\_

REV. DATE: \_\_\_\_\_

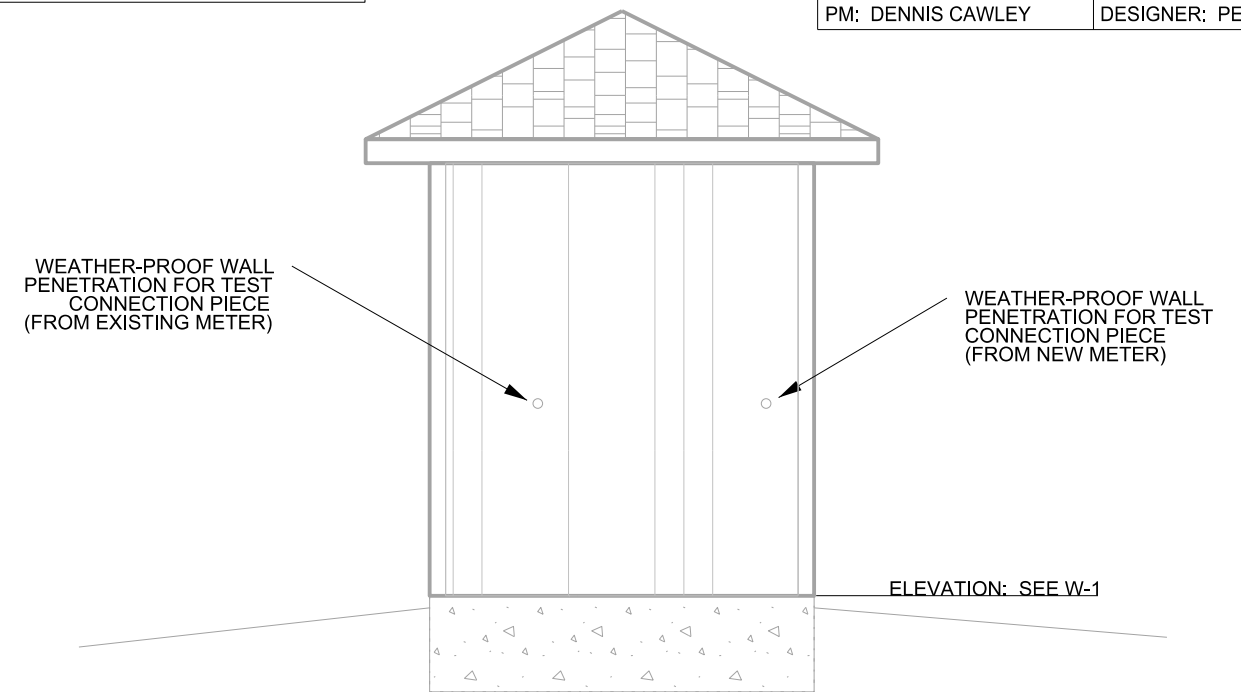
ORIGINATOR: CITY OF MADISON WATER UTILITY

NOTES:

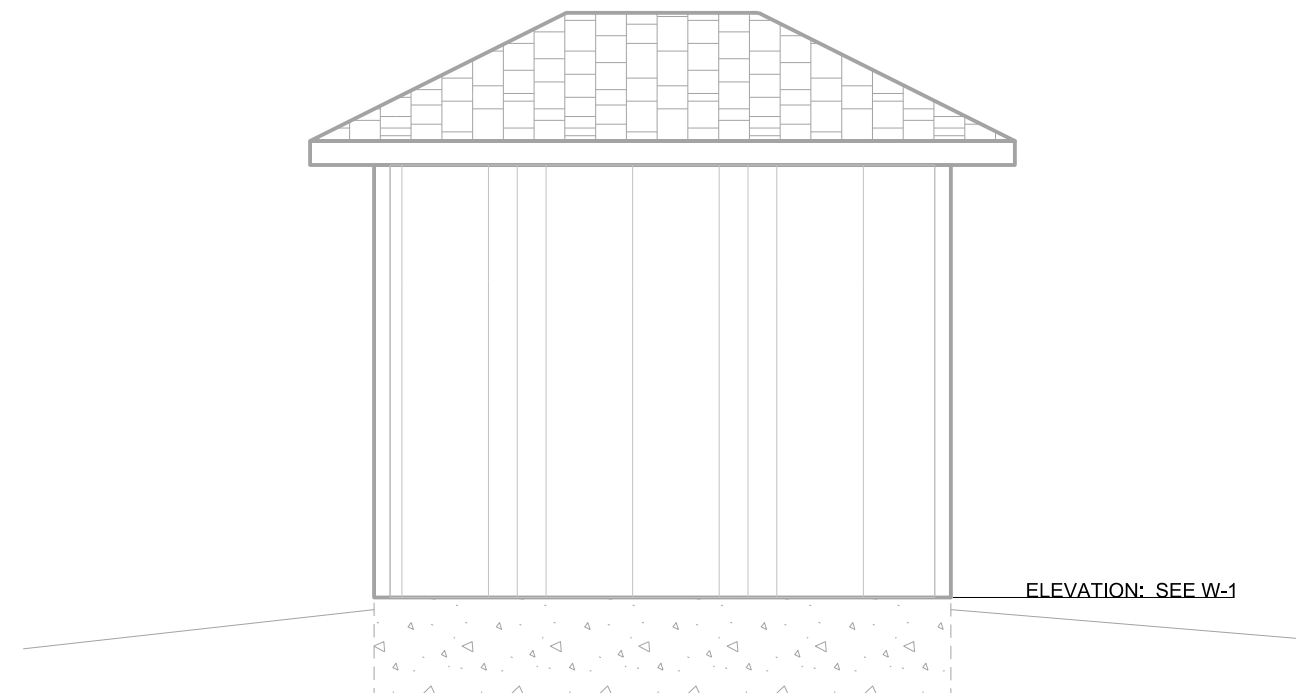
1) ENTIRE BUILDING TO BE REPAINTED AFTER CONSTRUCTION IS COMPLETE. COLORS TO MATCH EXISTING SCHEME. (BY OTHERS)



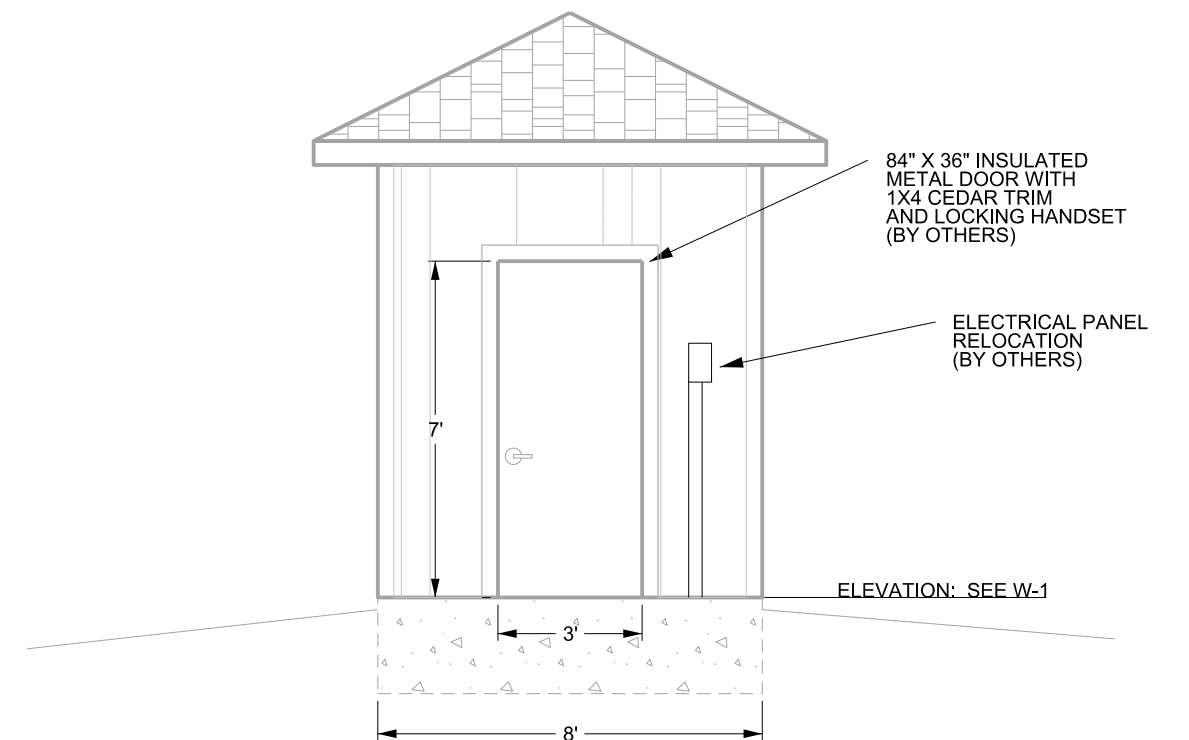
EAST ELEVATION



SOUTH ELEVATION



WEST ELEVATION



NORTH ELEVATION

PLOT SCALE: N/A

PLOT NAME: \_\_\_\_\_

REV. DATE: \_\_\_\_\_

ORIGINATOR: CITY OF MADISON WATER UTILITY