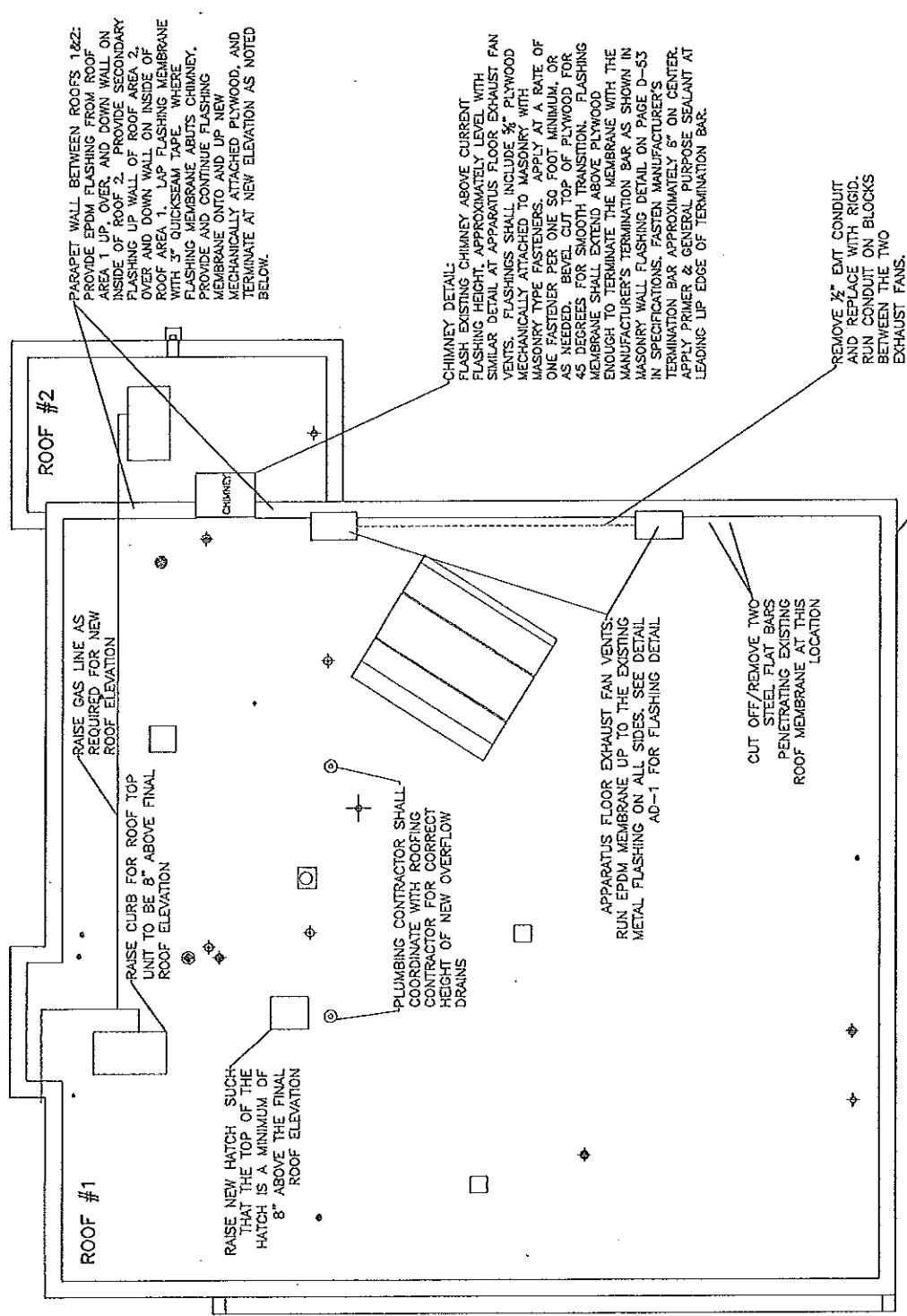




WILLIAMSON STREET



PARAPET WALL BETWEEN ROOFS 1&2:  
 PROVIDE EPDM FLASHING FROM ROOF  
 AREA 1 UP, OVER, AND DOWN WALL ON  
 INSIDE OF ROOF 2. PROVIDE SECONDARY  
 FLASHING UP WALL OF ROOF AREA 2,  
 OVER AND DOWN WALL ON INSIDE OF  
 ROOF AREA 1. LAP FLASHING MEMBRANE  
 WITH 3" QUICKSEAM TAPE. WHERE  
 FLASHING MEMBRANE ABUTS CHIMNEY,  
 PROVIDE AND CONTINUE FLASHING  
 MEMBRANE ONTO AND UP NEW  
 MECHANICALLY ATTACHED PLYWOOD, AND  
 TERMINATE AT NEW ELEVATION AS NOTED  
 BELOW.

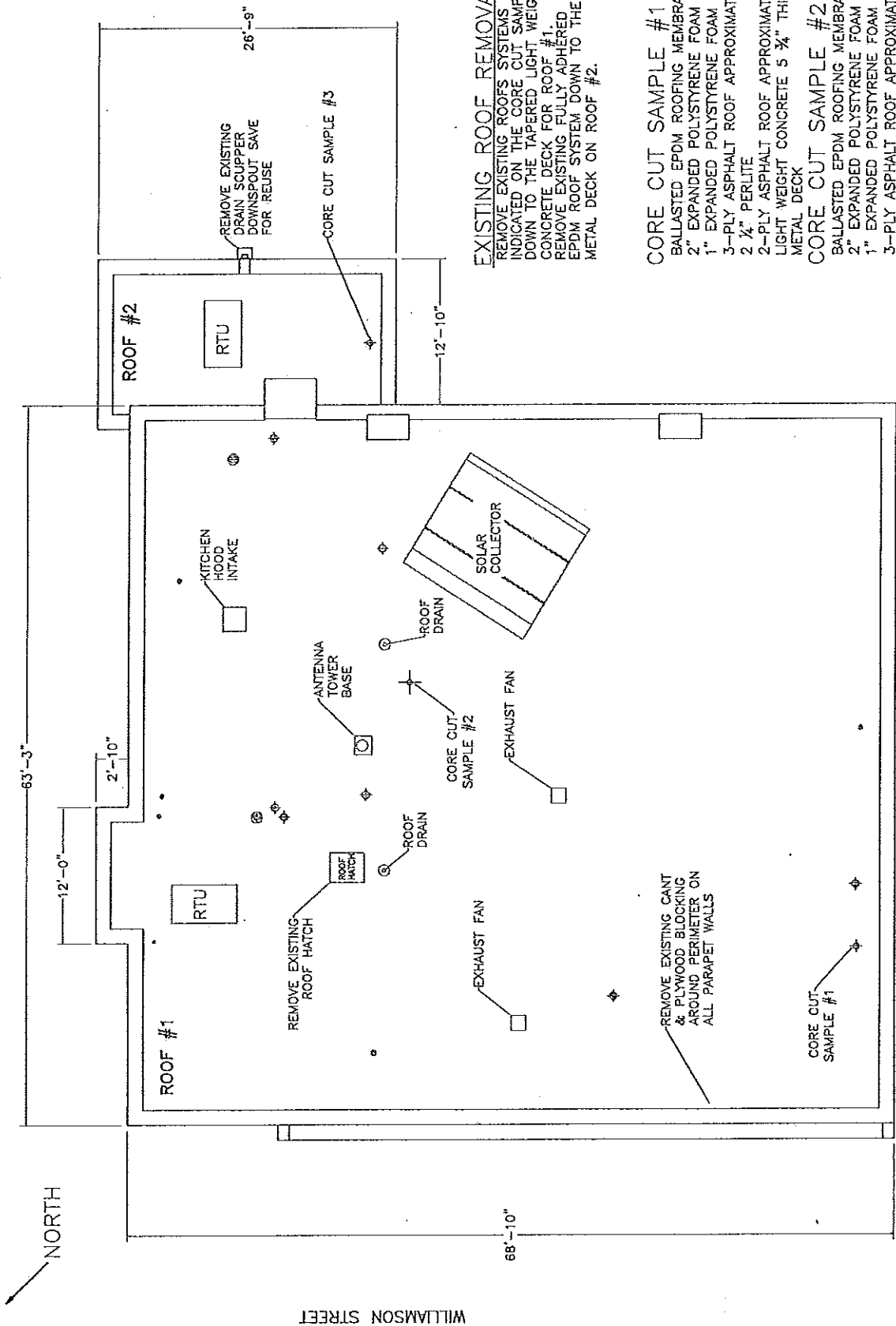
CHIMNEY DETAIL:  
 FLASH EXISTING CHIMNEY ABOVE CURRENT  
 FLASHING HEIGHT, APPROXIMATELY LEVEL WITH  
 SIMILAR DETAIL AT APPARATUS FLOOR EXHAUST FAN  
 VENTS. FLASHINGS SHALL INCLUDE 3/4" PLYWOOD  
 MECHANICALLY ATTACHED TO MASONRY WITH  
 MASONRY TYPE FASTENERS. APPLY AT A RATE OF  
 ONE FASTENER PER ONE SO FOOT MINIMUM OR  
 AS NEEDED. BEVEL CUT TOP OF PLYWOOD FOR  
 45 DEGREES FOR SMOOTH TRANSITION. FLASHING  
 MEMBRANE SHALL EXTEND ABOVE PLYWOOD  
 ENOUGH TO TERMINATE THE MEMBRANE WITH THE  
 MANUFACTURER'S TERMINATION BAR AS SHOWN IN  
 MASONRY WALL FLASHING DETAIL ON PAGE D-55  
 IN SPECIFICATIONS. PASTER MANUFACTURER'S  
 TERMINATION BAR APPROXIMATELY 5" ON CENTER.  
 APPLY PRIMER & GENERAL PURPOSE SEALANT AT  
 LEADING UP EDGE OF TERMINATION BAR.

REMOVE 3/4" EXIT CONDUIT  
 AND REPLACE WITH RIGID,  
 RUN CONDUIT ON BLOCKS  
 BETWEEN THE TWO  
 EXHAUST FANS.

APPARATUS FLOOR EXHAUST FAN VENTS:  
 RUN EPDM MEMBRANE UP TO THE EXISTING  
 METAL FLASHING ON ALL SIDES. SEE DETAIL  
 AD-1 FOR FLASHING DETAIL

CUT OFF/REMOVE TWO  
 STEEL FLAT BARS  
 PENETRATING EXISTING  
 ROOF MEMBRANE AT THIS  
 LOCATION

FIRE STATION #3  
 ROOF PLANS CHANGES



**EXISTING ROOF REMOVAL**  
 REMOVE EXISTING ROOF SYSTEMS AS INDICATED ON THE CORE CUT SAMPLES DOWN TO THE TAPERED LIGHT WEIGHT CONCRETE DECK FOR ROOF #1. REMOVE EXISTING FULLY ADHERED EPDM ROOF SYSTEM DOWN TO THE METAL DECK ON ROOF #2.

**CORE CUT SAMPLE #1**

- BALLASTED EPDM ROOFING MEMBRANE
- 2" EXPANDED POLYSTYRENE FOAM INSULATION
- 1" EXPANDED POLYSTYRENE FOAM INSULATION
- 3-PLY ASPHALT ROOF APPROXIMATELY 3/4" THICK
- 2 1/2" PERLITE
- 2-PLY ASPHALT ROOF APPROXIMATELY 1/2" THICK
- LIGHT WEIGHT CONCRETE 5 3/4" THICK (TO REMAIN)
- METAL DECK

**CORE CUT SAMPLE #2**

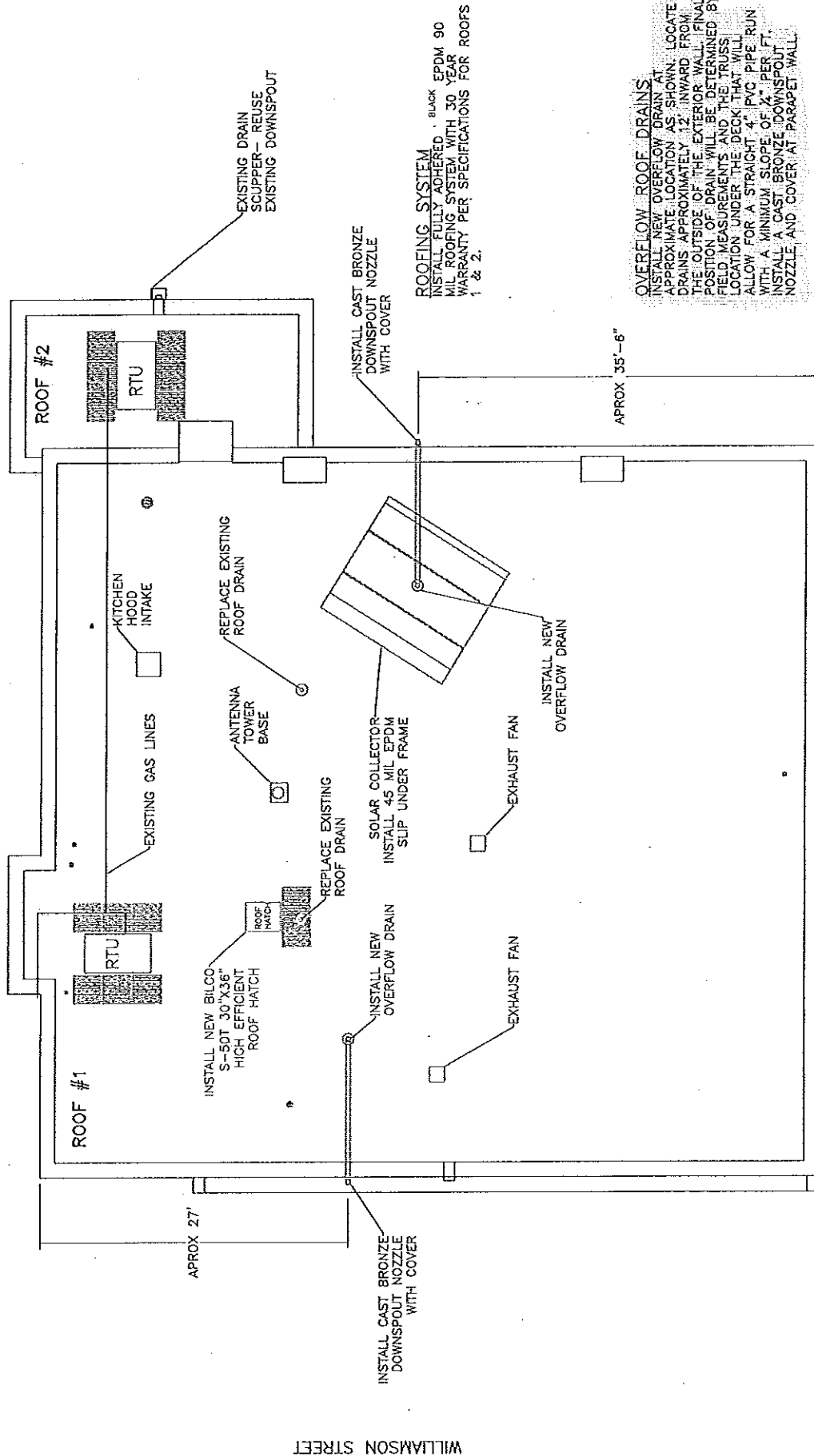
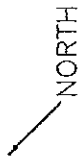
- BALLASTED EPDM ROOFING MEMBRANE
- 2" EXPANDED POLYSTYRENE FOAM INSULATION
- 1" EXPANDED POLYSTYRENE FOAM INSULATION
- 3-PLY ASPHALT ROOF APPROXIMATELY 3/4" THICK
- 2 1/2" PERLITE
- 2-PLY ASPHALT ROOF APPROXIMATELY 1/2" THICK
- LIGHT WEIGHT CONCRETE 3" THICK (TO REMAIN)
- METAL DECK

**CORE CUT SAMPLE #3**

- FULLY ADHERED EPDM ROOFING MEMBRANE
- TYPE Y+2 POLY ISO INSULATION
- 2" POLYISO INSULATION
- 2" POLYISO INSULATION
- METAL DECK

◆ REMOVE EXISTING ROOF PENETRATIONS WHERE INDICATED. PATCH HOLES IN DECK AS REQUIRED.

**FIRE STATION #3 ROOF DEMOLITION PLAN**  
 1217 WILLIAMSON STREET, MADISON WI



WILLIAMSON STREET

ROOFING SYSTEM  
 INSTALL FULLY ADHERED, BLACK EPDM 90  
 MIL ROOFING SYSTEM WITH 30 YEAR  
 WARRANTY PER SPECIFICATIONS FOR ROOFS  
 1 & 2.

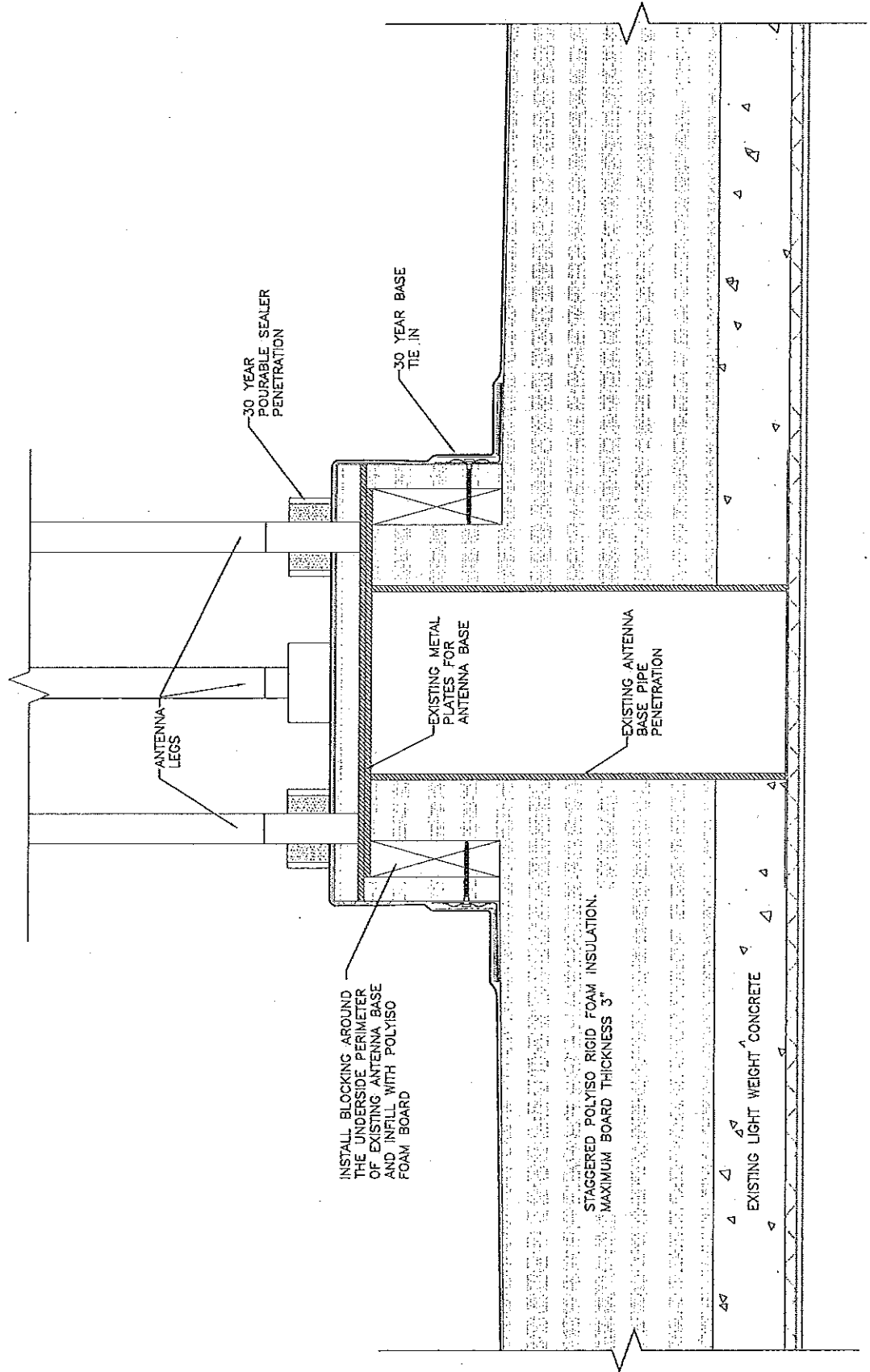
OVERFLOW ROOF DRAINS  
 INSTALL NEW OVERFLOW DRAIN AT  
 APPROXIMATE LOCATION AS SHOWN. LOCATE  
 DRAINS APPROXIMATELY 12" INWARD FROM  
 THE OUTSIDE OF THE EXTERIOR WALL. FINAL  
 POSITION OF DRAIN WILL BE DETERMINED BY  
 FIELD MEASUREMENT AND THE TRUSS  
 LOCATION UNDER THE DECK THAT WILL  
 ALLOW FOR A STRAIGHT 4" PVC PIPE RUN  
 WITH A MINIMUM SLOPE OF 2" PER FT.  
 INSTALL A CAST BRONZE DOWNSPOUT  
 NOZZLE AND COVER AT PARAPET WALL.

INSTALL 30 X 30 WALKWAY  
 PADS AT LOCATIONS INDICATED

# FIRE STATION #3 ROOF PLAN

1217 WILLIAMSON STREET, MADISON WI

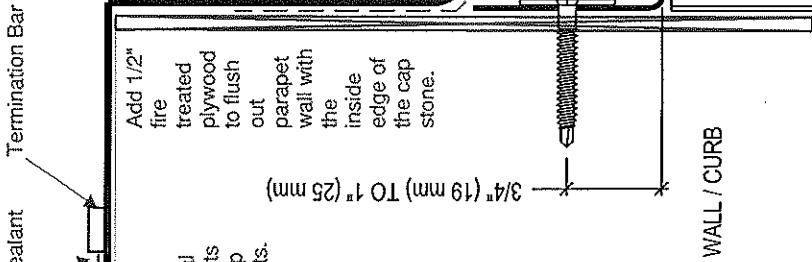
# ANTENNA TOWER BASE DETAIL







Hem each end of metal edge flashing. Lap joints (end joints) to match up with the cap stone joints.



Continuous bonding adhesive up and on top of parapet wall under EPDM.

QUICKSEAM RPF STRIP MUST EXTEND 1/2" (13 mm) ABOVE BATTEN STRIP

FIRESTONE BATTEN FASTENED WITH FIRESTONE FASTENERS 12" (305 mm) O.C. MAX. (AP SEALANT OVER FASTENER HEADS) (SEE NOTE #2)

QUICKSEAM RPF STRIP (SEE NOTE #2)

QUICKPRIME PLUS

.090" PLATINUM EPDM MEMBRANE

BONDING ADHESIVE

FIRESTONE INSULATION

SUBSTRATE

**NOTES:**

1. REFER TO FIRESTONE WEBSITE FOR MOST CURRENT INFORMATION.
2. REFER TO PBT-12 & 13 FOR QUICKSEAM RPF STRIP LAYOUT.
3. POLYMER OR METAL BATTEN STRIP ACCEPTABLE FOR WOOD OR METAL SUBSTRATE. METAL BATTEN MUST BE USED WITH MASONRY SUBSTRATE.

MAXIMUM WARRANTY: 30 YEARS

ISSUE / REVISION DATE:  
6/16/2014

DETAIL NO.

**PBT-4**

NOT TO SCALE

**BASE TIE-IN WITH QUICKSEAM RPF AND BATTEN FASTENED TO WALL / CURB**

ACCEPTABLE SYSTEMS: PLATINUM

RUBBERGARD™ PLATINUM

**Firestone**  
BUILDING PRODUCTS  
NOBODY COVERS YOU BETTER.™  
www.firestonebpcc.com