



Department of Public Works
Engineering Division
James M. Wolfe, P.E., City Engineer

City-County Building, Room 115
210 Martin Luther King, Jr. Boulevard
Madison, Wisconsin 53703
Phone: (608) 266-4751
Fax: (608) 264-9275
engineering@cityofmadison.com
www.cityofmadison.com/engineering

Assistant City Engineer
Bryan Cooper, AIA
Gregory T. Fries, P.E.
Chris Petykowski, P.E.
Deputy Division Manager
Kathleen M. Cryan
Principal Engineer 2
John S. Fahrney, P.E.
Janet Schmidt, P.E.
Principal Engineer 1
Mark D. Moder, P.E.
Andrew J. Zwieg, P.E.
Financial Manager
Steven B. Danner-Rivers

March 15, 2024

**NOTICE OF ADDENDUM
ADDENDUM NO. 2
City of Madison, Engineering Department**

**CONTRACT NO. 9359
Country Grove Park Shelter**

This addendum is issued to modify, explain or correct the original Drawings, Specifications, or Contract Documents marked as **Country Grove Park Shelter, City of Madison, Contract #9359, as issued on February 1, 2024** and is hereby made a part of the contract documents.

This addendum consists of the following documents:

- **Drawings C1.3, C1.4, S100, A100, A300, A500, & A501**
- **Specification Pages (08 41 13 -1) thru (08 41 13 -2)**

Please attach these Addendum documents to the Drawings (Exhibit A), Specifications (Exhibit B), and Proposal Specifications in your possession.

1. **GENERAL CONTRACT CONDITIONS**

A. No Change.

2. **GENERAL QUESTIONS AND ANSWERS**

A. Q1: Will the street patch require a 2" mill & overlay? If not, should I assume 4" asphalt (2 ¼" 3 LT and 1 ¾" 4 LT)?

A1: The street patch should be a Utility Trench Patch Type III In accordance with Article 502.1(f) of the Standard Specifications. The 50' patch width shown on the plans is actually not necessary since the pavement rating of the street is not over 6. Reference attached drawing C1.3 & C1.4

3. **ACCEPTABLE EQUIVALENTS**

- A. Specification Section 08 41 13 Aluminum-Framed Entrances and Storefront:
- i. Tubelite Inc Versatherm™ Storefront Framing system is an approval to Kawneer Trifab® VersaGlaze® 451T

4. **SPECIFICATIONS**

A. Specification Section 08 41 13 Aluminum-Framed Entrances and Storefront

- i. Replace entire specification section with new attached section 08 41 13.
 - Section 08 41 13 Aluminum-Framed Entrances and Storefront, Page 1, 2.1-A-2, Replace EnCORE™ with Trifab® VersaGlaze® 451T
 - Section 08 41 13 Aluminum-Framed Entrances and Storefront, Page 1, 2.1-A-3, Replace 1-3/4" (44.5) x 3-9/16" (90.5) with 2" x 4-1/2"

5. **DRAWINGS**

A. Civil

- i. **Drawing C1.3:** Replace with attached sheet.
 - Plan updated to reflect Utility Trench Patch Type III requirements in East Pass. Requirements can be found in Article 502.1(f) of the Standard Specifications. Pavement rating of East Pass is 6.
- ii. **Drawing C1.4:** Replace with attached sheet.
 - Plan updated to reflect Utility Trench Patch Type III requirements in East Pass. Requirements can be found in Article 502.1(f) of the Standard Specifications. Pavement rating of East Pass is 6.

B. Architectural

- i. **Drawing S100:** Replace with attached sheet.
 - Revise foundation plan 1/S100. Partition for foundation wall changes from 8" to 10"
 - Move note for clarity 1/S100
 - Revise column location & updated window framing background 2/S100
- ii. **Drawing A100:** Replace with attached sheet.
 - Revise 1/A100 adjusted column A location & changed partition of wood wall to CMU.
- iii. **Drawing A300:** Replace with attached sheet.
 - Revise elevation 1/A300 changed partition of wood wall to CMU
- iv. **Drawing A500:** Replace with attached sheet.
 - Revise 1, & 2/A500 Changed window frame section
 - Revise 2/A500 adjusted column location
- v. **Drawing A501:** Replace with attached sheet.
 - Revise 1, 3 & 4/A501 Changed window frame section

6. **PROPOSAL SPECIFICATIONS**

A. No Change.

Please acknowledge this addendum in Section E on page E-1: Bidder's Acknowledgement on Bid Express.

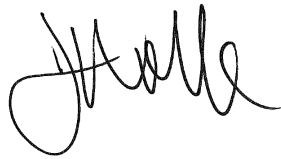
Electronic version of these documents can be found on Bid Express at <https://www.bidexpress.com/> and the City of Madison web site at <http://www.cityofmadison.com/business/PW/contracts/openforBid.cfm>

If you are unable to download plan revisions associated with the addendum, please contact the Engineering office at 608-266-4751 to receive the material by another method.

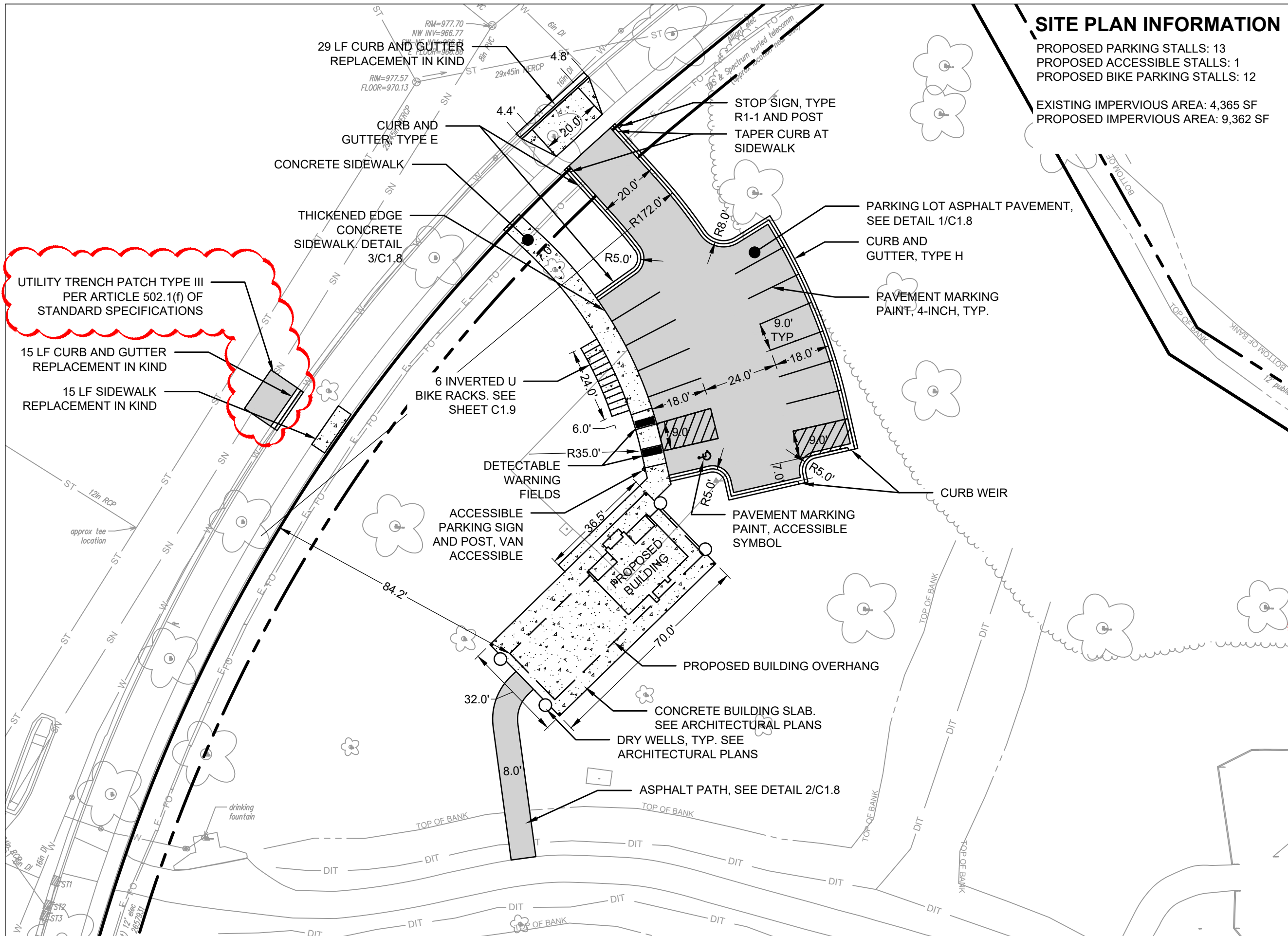
For questions regarding this bid, contact:

The Project Architect for this contract is:	The City Project Manager for this contract is:
<u>Destree Design Architects</u> Richard Dolezal PH: 608-512-1884 Email: Rdolezal@destreearchitects.com	<u>City of Madison</u> Laura Amundson PH: 608-243-5892 Email: LAmundson@cityofmadison.com

Sincerely,



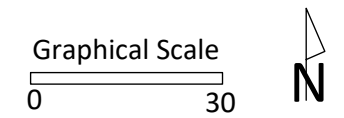
James M. Wolfe, P.E., City Engineer



SITE PLAN INFORMATION

PROPOSED PARKING STALLS: 13
 PROPOSED ACCESSIBLE STALLS: 1
 PROPOSED BIKE PARKING STALLS: 12
 EXISTING IMPERVIOUS AREA: 4,365 SF
 PROPOSED IMPERVIOUS AREA: 9,362 SF

City of Madison
 Department of Public Works
PARKS DIVISION
 330 E. Lakeside St.
 Madison, WI 53715



PROJECT:
**COUNTRY GROVE
 PARK SHELTER**

PROJECT ADDRESS:
**7353 EAST PASS
 MADISON, WI**

Although every effort has been made in preparing these plans and checking them for accuracy, the contractor and subcontractors must check all details and dimensions of their trade and be responsible for the same.

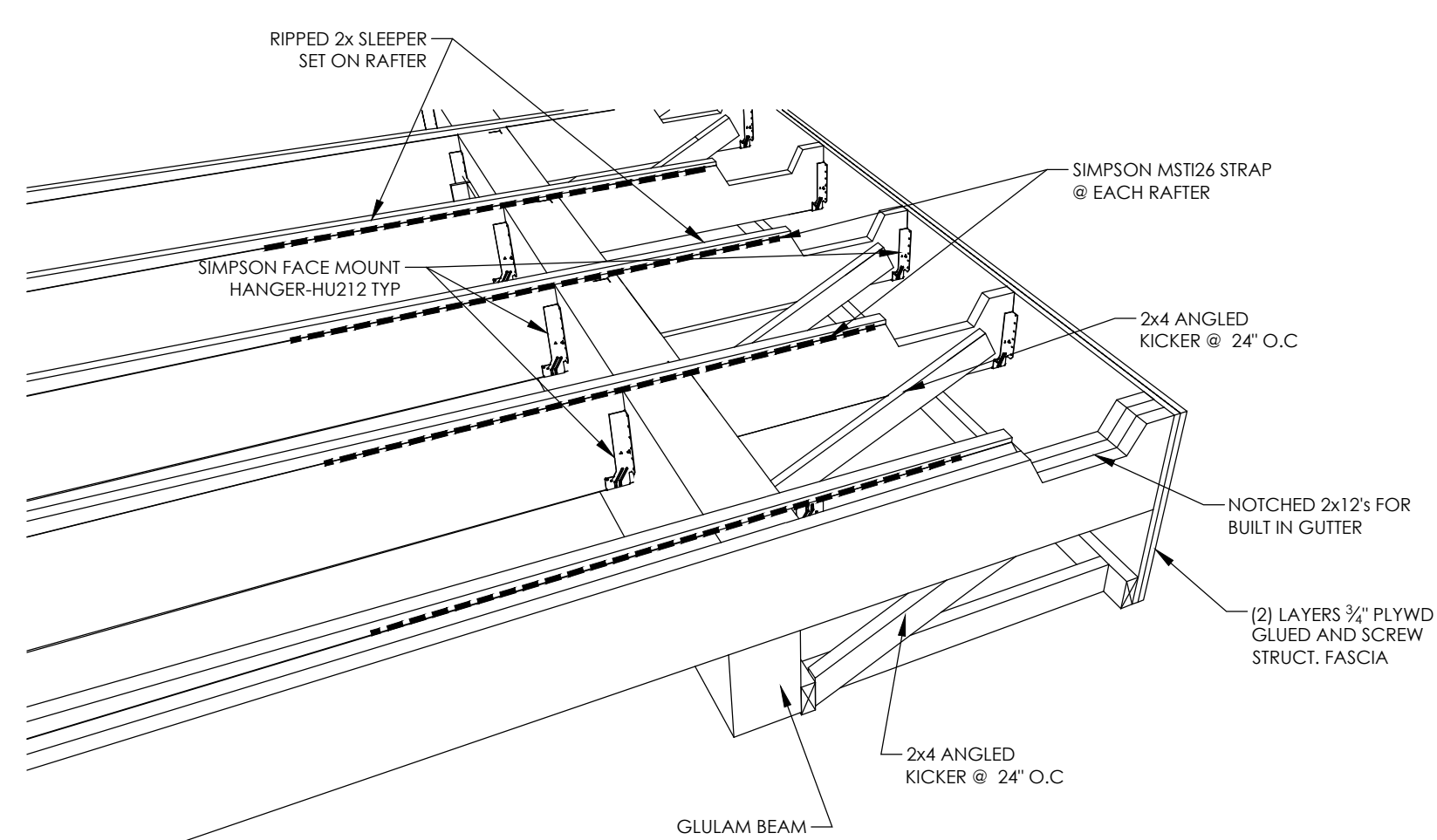
ITEM	DATE
RID SET	02-07-2024
ADDENDUM #2	03-15-2024

PUBLIC WORKS PROJECT #:
9359

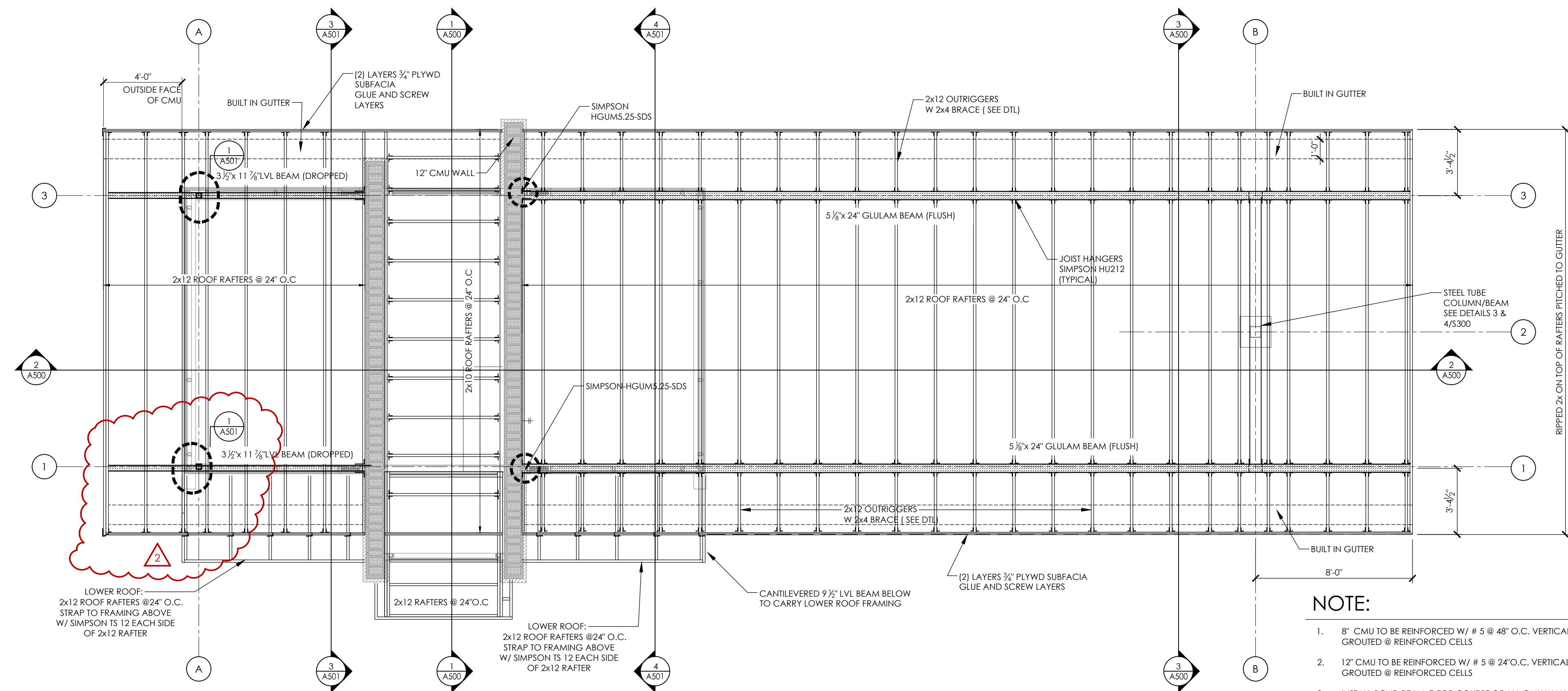
SHEET TITLE:
SITE PLAN

SHEET NUMBER:
C1.4

PLOT DATE: 03/15/2024

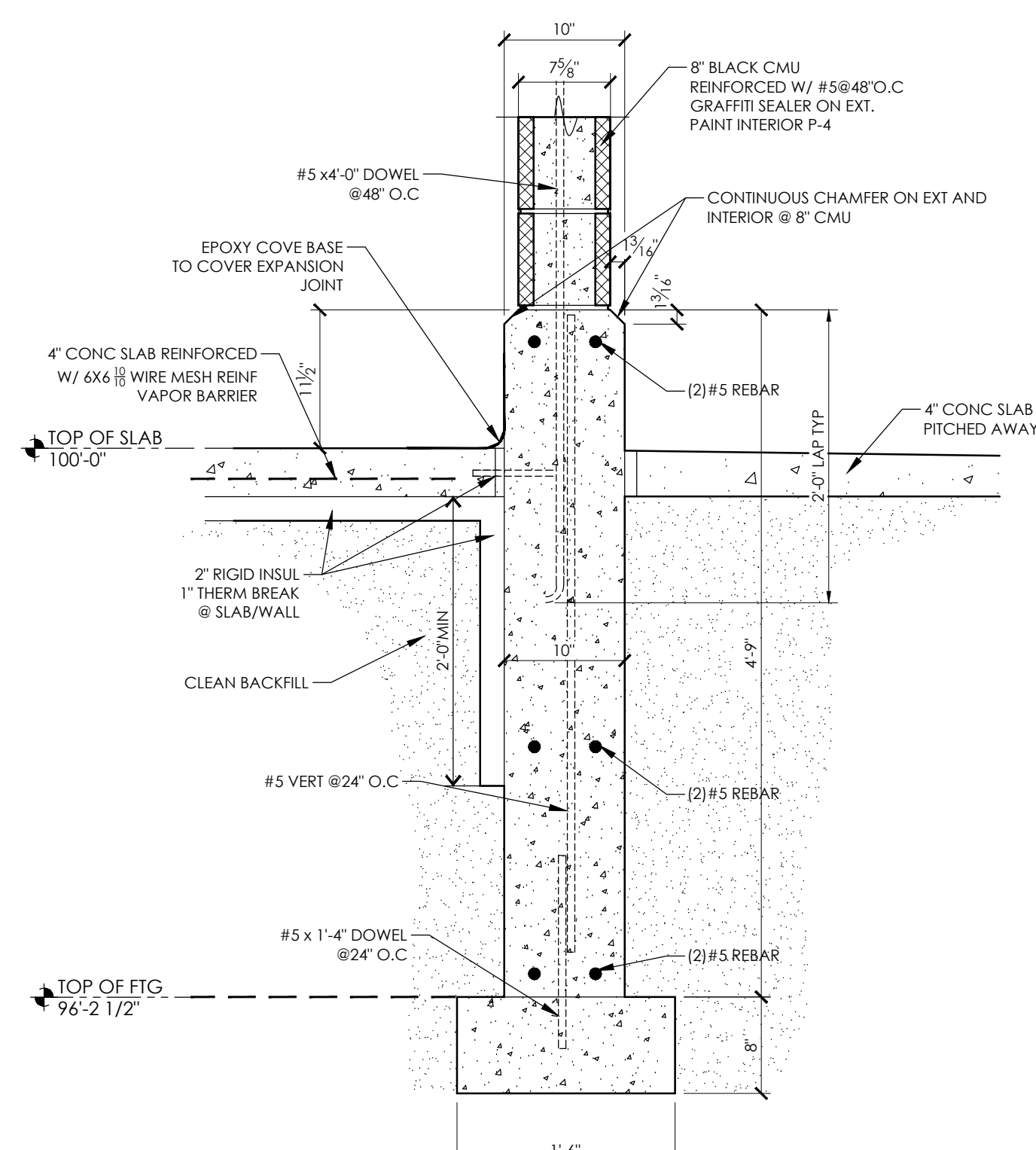


4 BUILT-IN GUTTER DETAIL
3/8" = 1'-0"

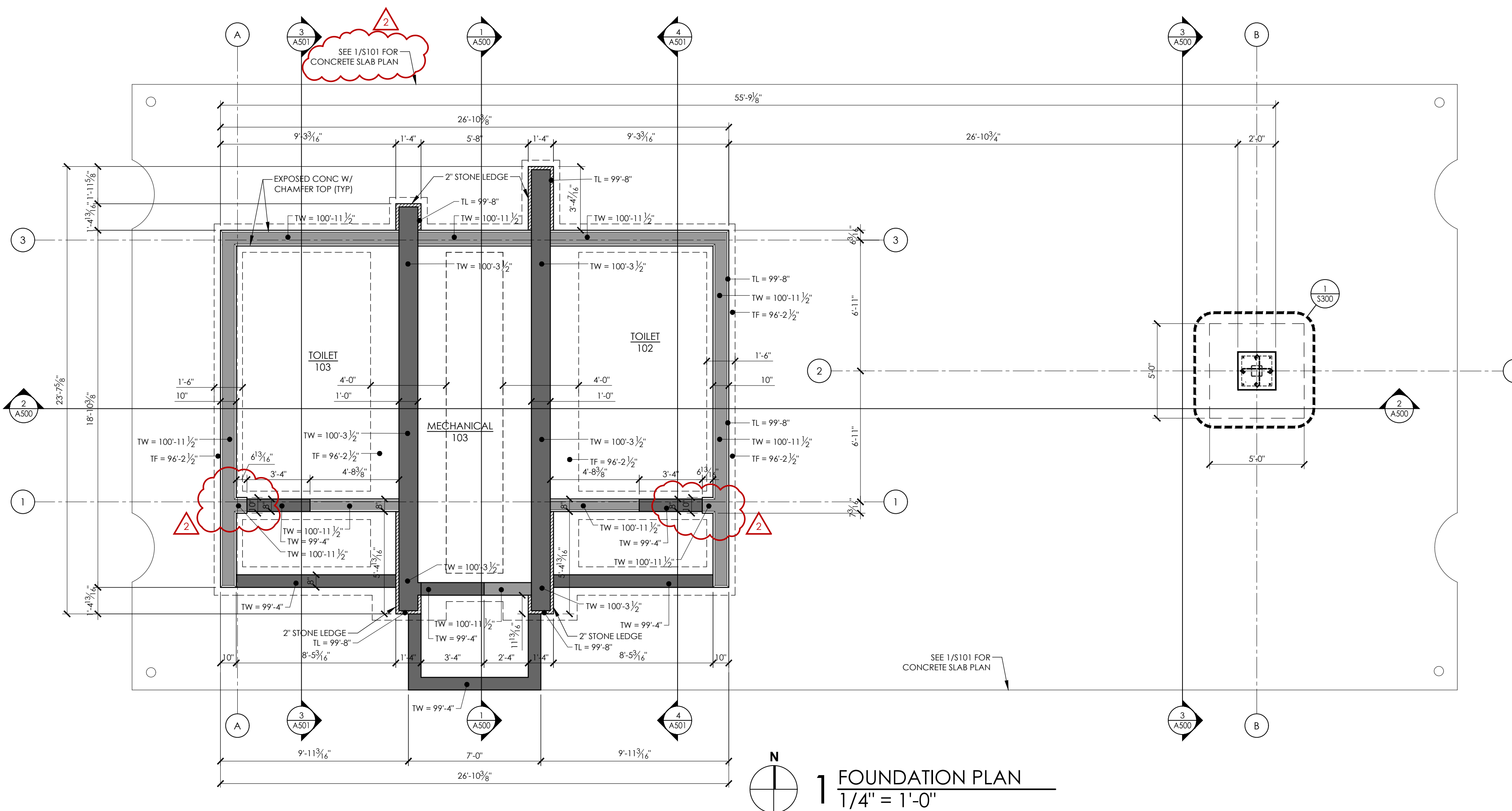


2 ROOF FRAMING PLAN
1/4" = 1'-0"

- NOTE:**
- 8" CMU TO BE REINFORCED W/ # 5 @ 48" O.C. VERTICAL GROUTED @ REINFORCED CELLS
 - 12" CMU TO BE REINFORCED W/ # 5 @ 24" O.C. VERTICAL GROUTED @ REINFORCED CELLS
 - INSTALL BOND BEAM @ TOP COURSE OF ALL CMU WALLS W/ (2) # 5 BARS CONTINUOUS. INSTALL BOND BEAM @ ALL THROUGH WALL PENETRATIONS. EXTEND 16" PAST OPENING
 - FIN. FLOOR ELEVATION 974.00' = 100'-0"



3 FOUNDATION DETAIL
1" = 1'-0"

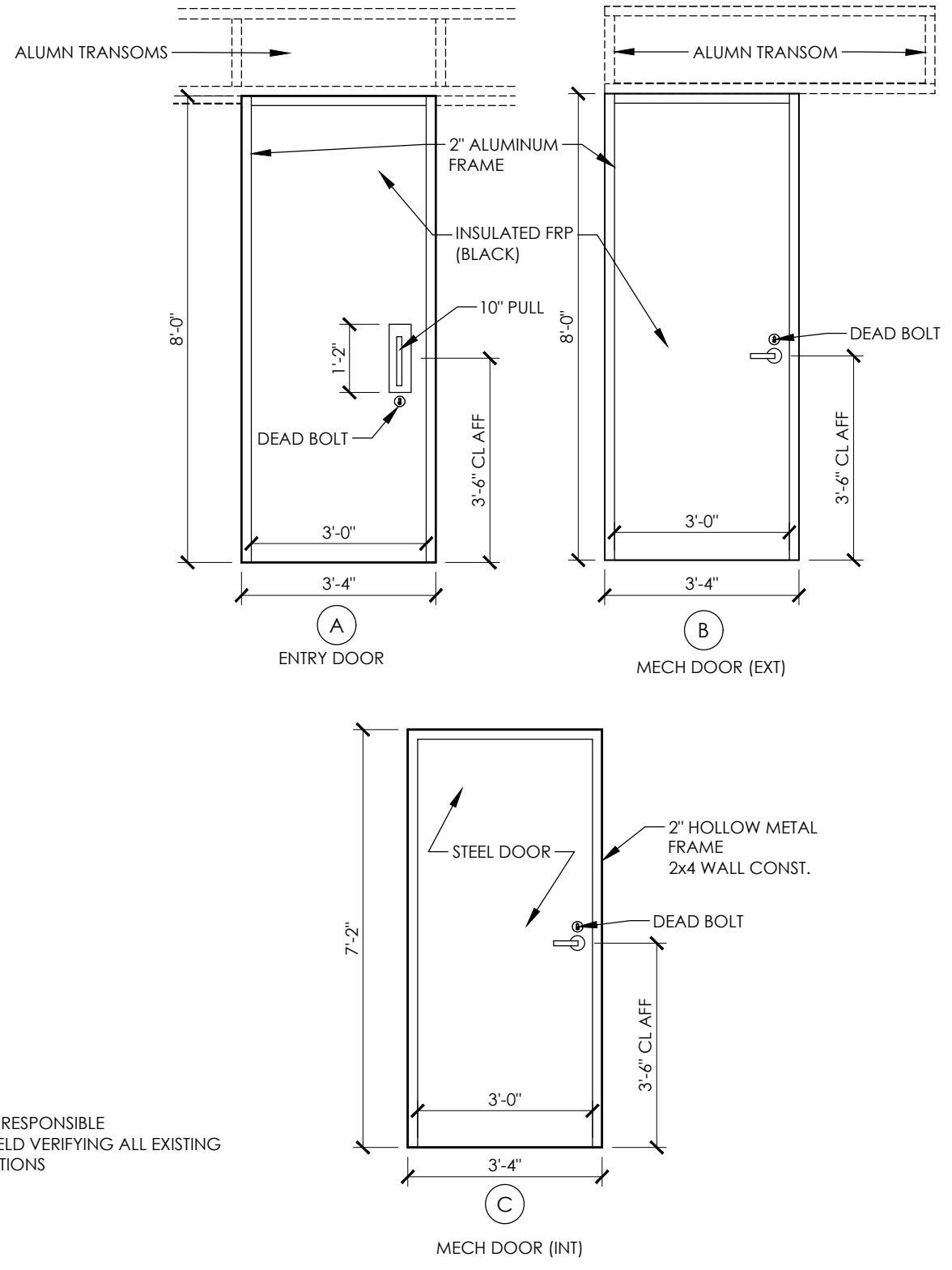
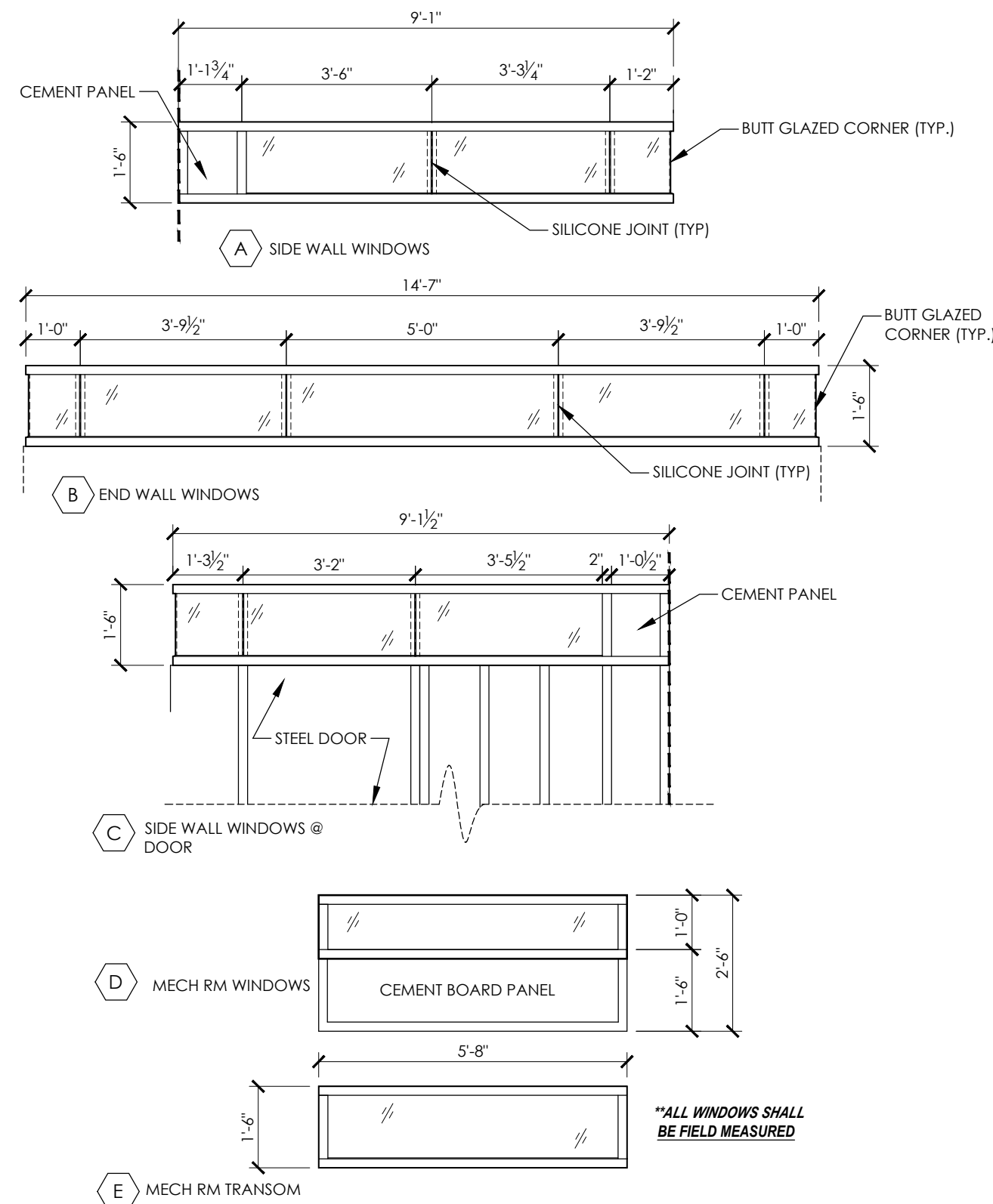


1 FOUNDATION PLAN
1/4" = 1'-0"

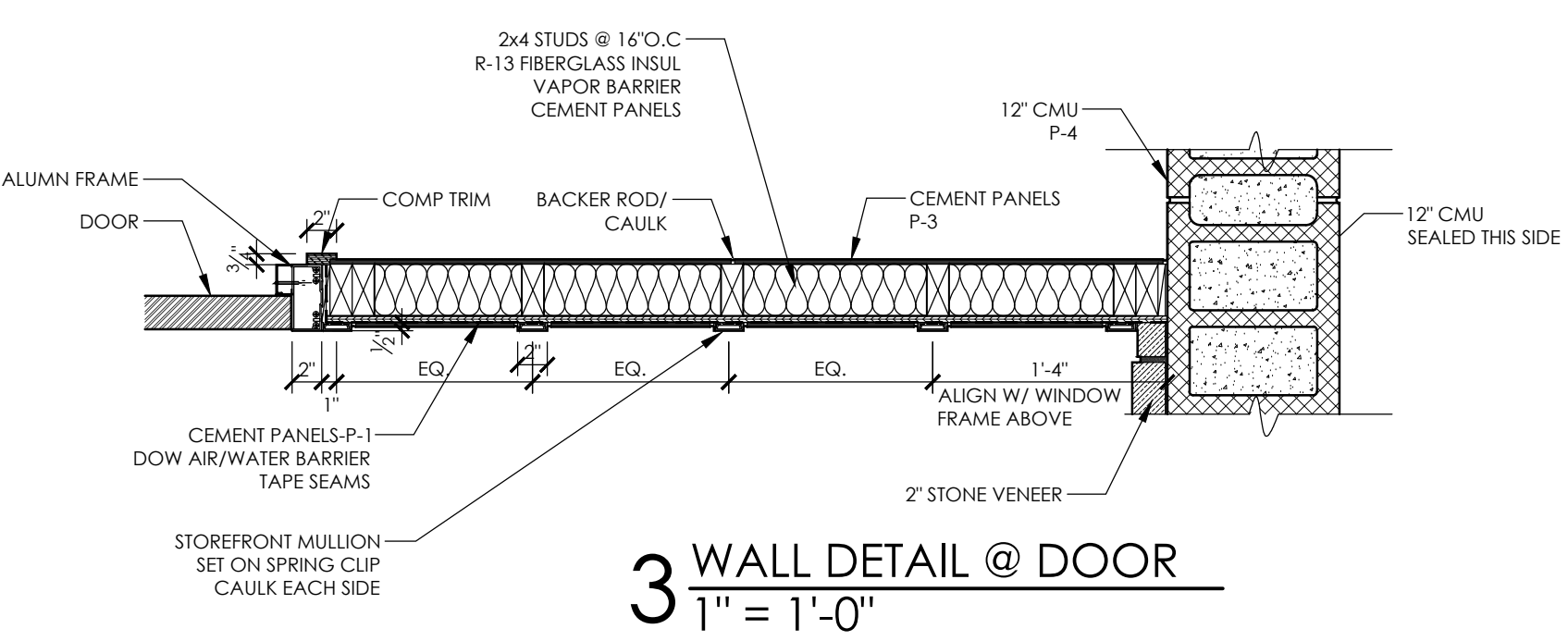
ISSUANCES:

- 02.01.24 - BID SET
- 03.12.24 - ADDENDUM #1
- 03.15.24 - ADDENDUM #2

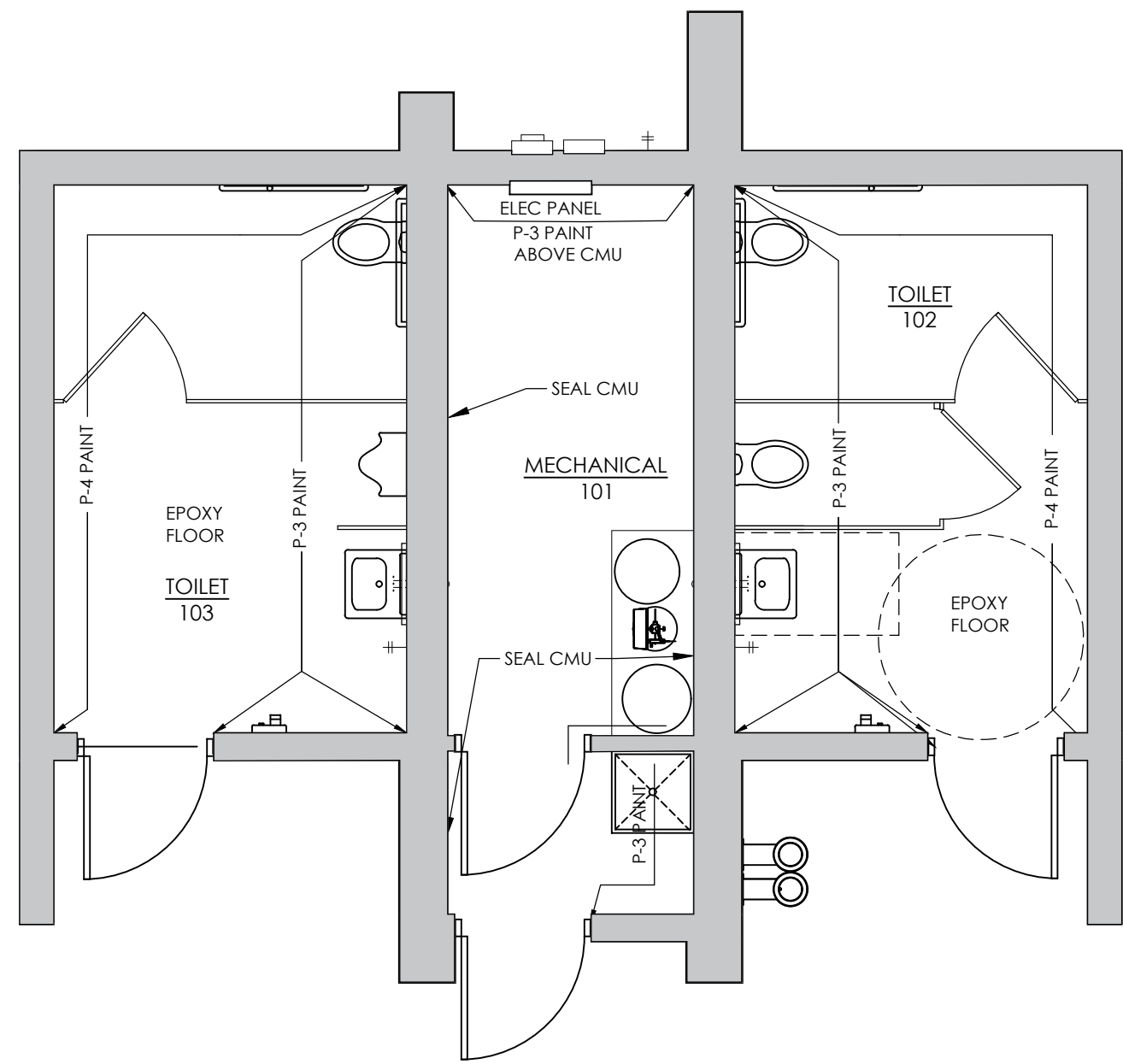
PLOT DATE: 03/15/2024



4 DOOR & WINDOW TYPES
3/8" = 1'-0"



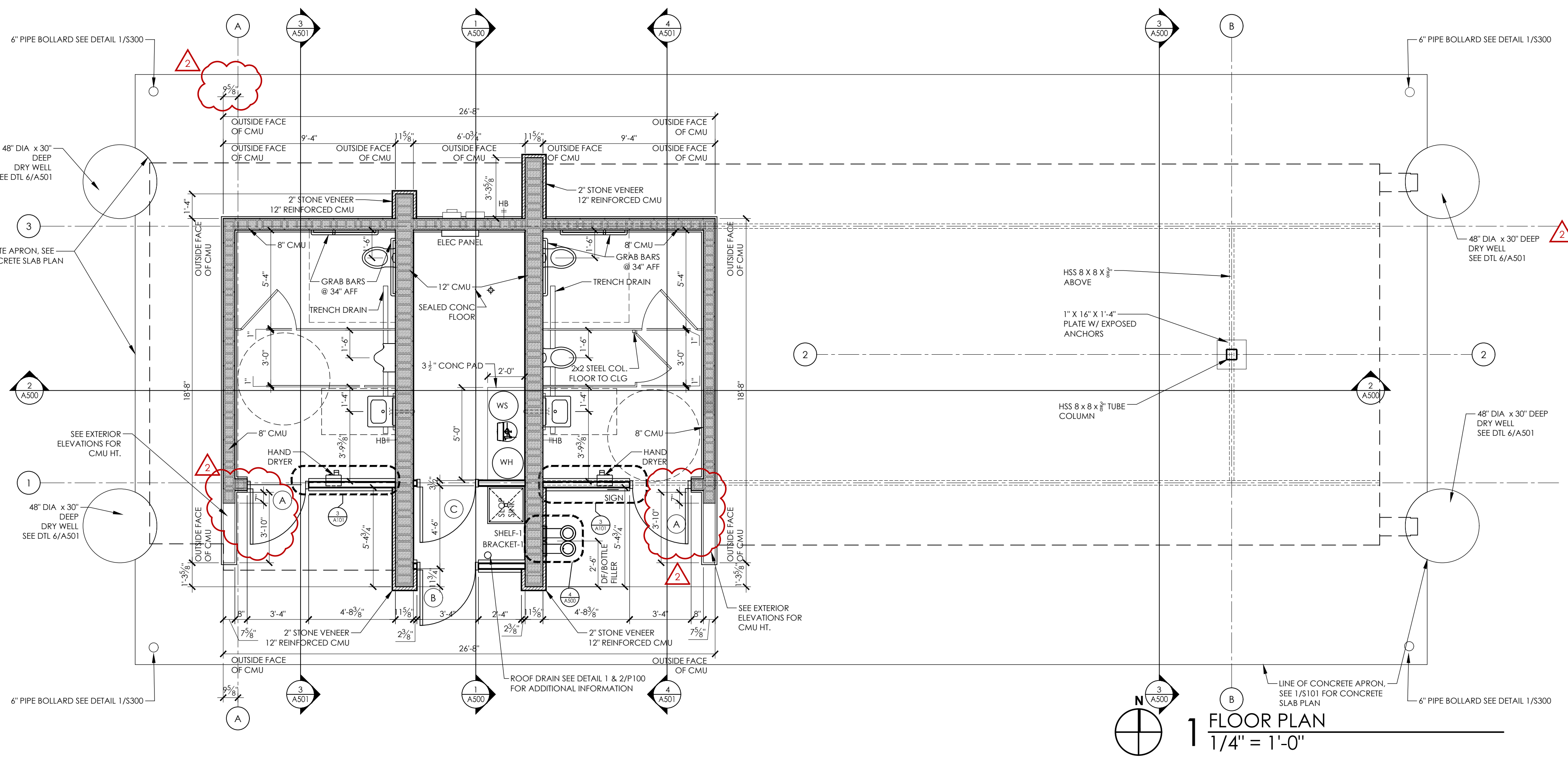
3 WALL DETAIL @ DOOR
1" = 1'-0"



2 FINISH PLAN
1/4" = 1'-0"

GENERAL PLAN NOTES

- 8" CMU TO BE REINFORCED W/ # 5 @ 48" O.C. VERTICAL GROUDED @ REINFORCED CELLS.
- 12" CMU TO BE REINFORCED W/ # 5 @ 24" O.C. VERTICAL GROUDED @ REINFORCED CELLS.
- INSTALL BOND BEAM @ TOP COURSE OF ALL CMU WALLS W/ (2) # 5 BARS CONTINUOUS. INSTALL BOND BEAM @ ALL THROUGH WALL PENETRATIONS. EXTEND 16" PAST OPENING.
- WIRE WALL SHELVES (SHELF-1) BY OWNER.
- PROVIDE WALL MOUNTED BRACKET (BRACKET-1) FOR DRINKING FOUNTAIN FILTER.
- SEE 1000 FOR FINISH SCHEDULE.



1 FLOOR PLAN
1/4" = 1'-0"

DESTREE
architecture & design
222 WEST WASHINGTON AVE, SUITE 310
MADISON, WI 53703
PH: 608.268.1499
www.Destreearchitects.com

ENGINEERING SERVICES PROVIDED BY:
ECHOLON
STRUCTURES
3530 TIMBER LANE
CROSS PLAINS, WI 53528

MEP DESIGN SERVICES PROVIDED BY:
Henneman
Engineering
Madison: 1241 John Q. Harmons Dr., Suite 503
Madison, Wisconsin 53717
T: 608.833.7000
Email: info@henneman.com
Website: http://www.henneman.com
JOB NO. 23-10419

COUNTRY GROVE
PARK SHELTER
7353 EAST PASS
MADISON, WI 53719
CONTRACT #9359 / MUNIS #13937

ISSUANCES:
02.01.24 - BID SET
03.15.24 - ADDENDUM #2

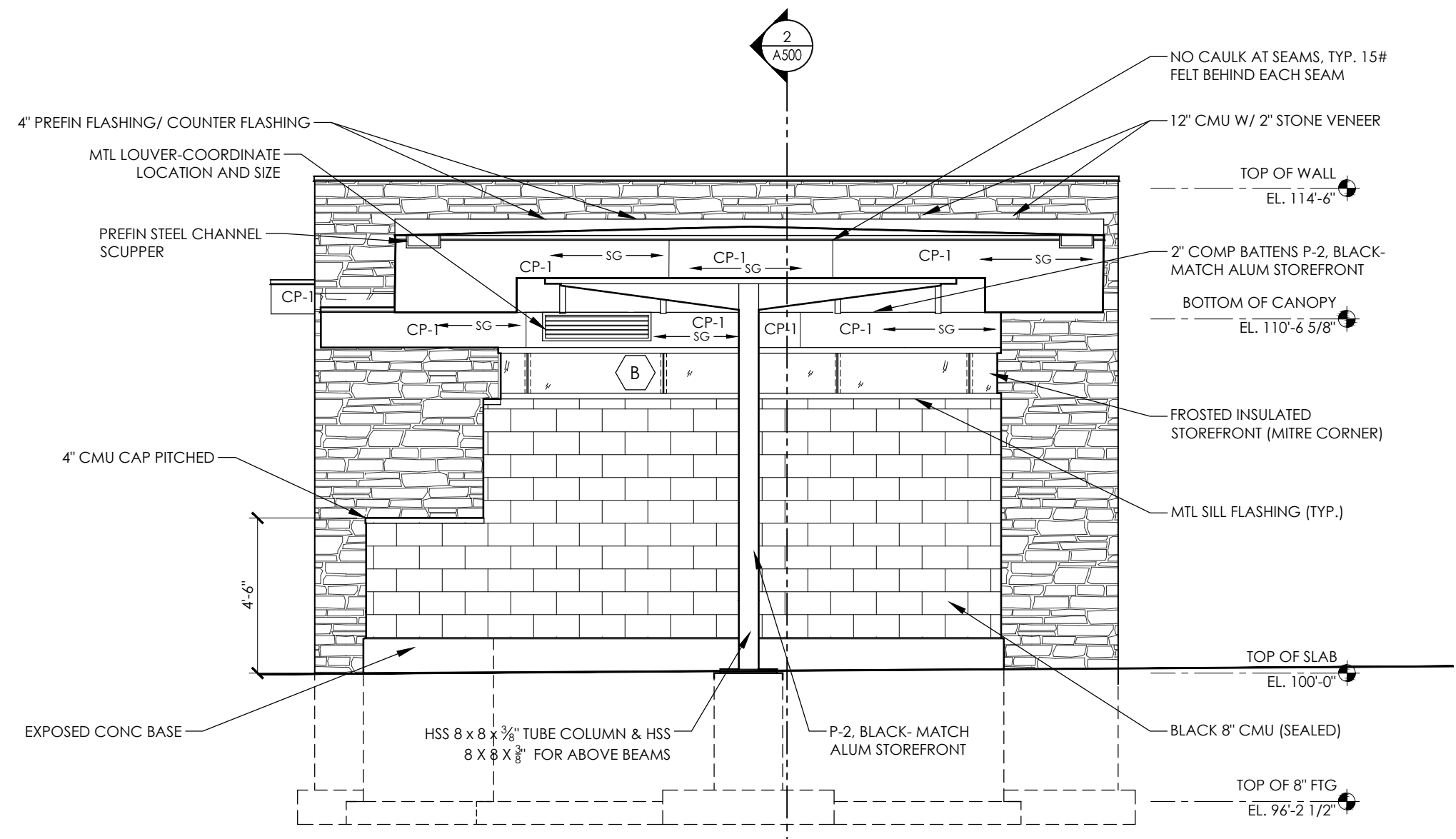
SHEET NAME
FLOOR & ROOF PLAN,
DOOR ELEVATIONS & DETAIL
SHEET NUMBER

A100

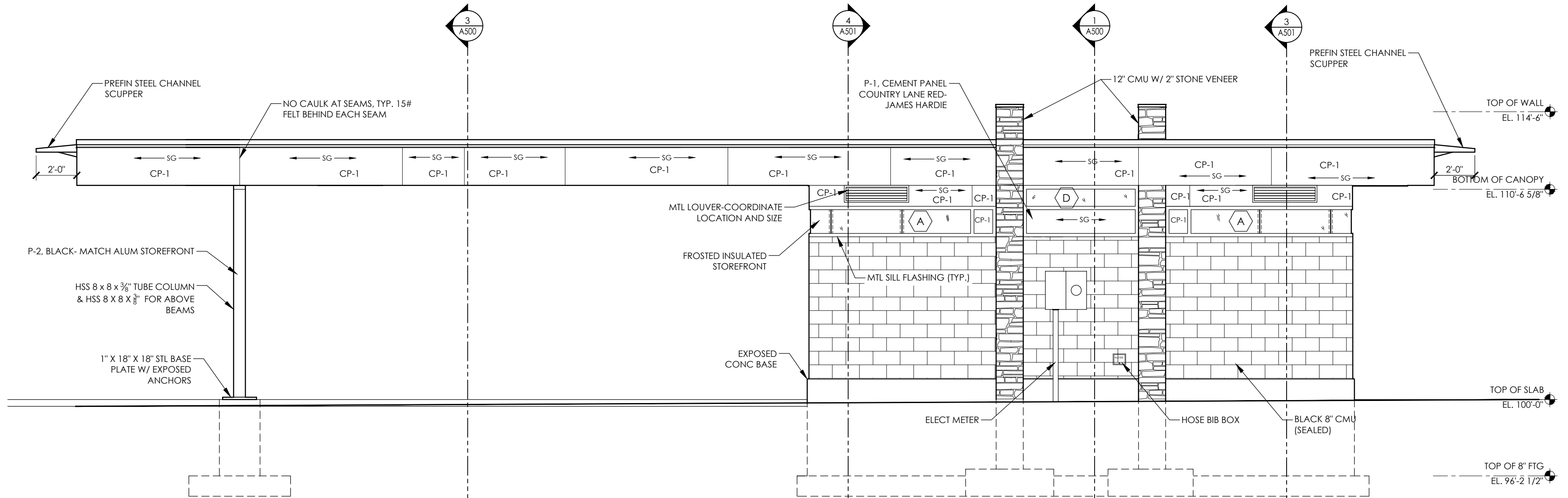
PLOT DATE: 03/15/2024

COUNTRY GROVE
PARK SHELTER
7353 EAST PASS
MADISON, WI 53719
CONTRACT #9359 / MUNIS #13937

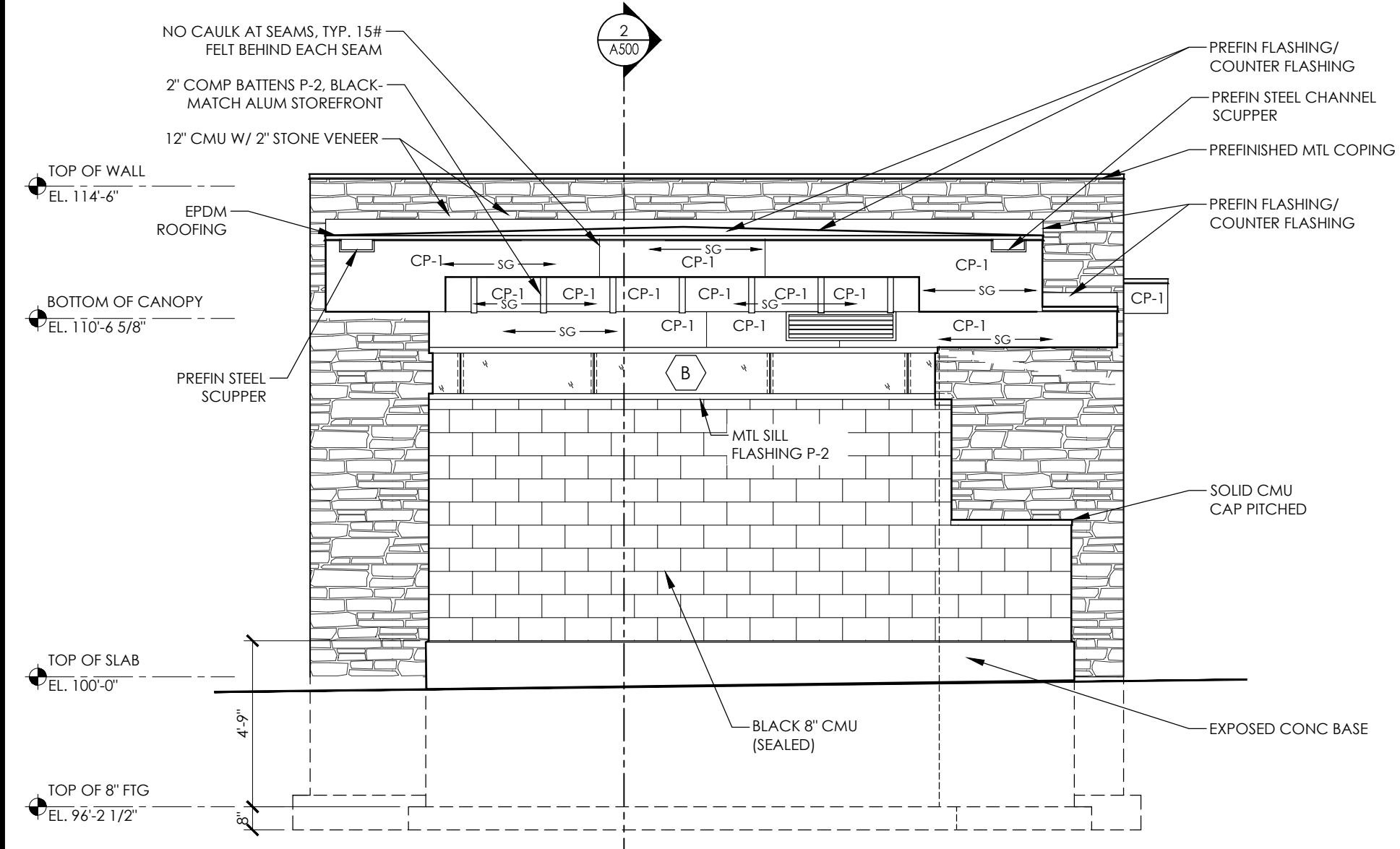
ISSUANCES:
02.01.24 - BID SET
03.15.24 - ADDENDUM #2



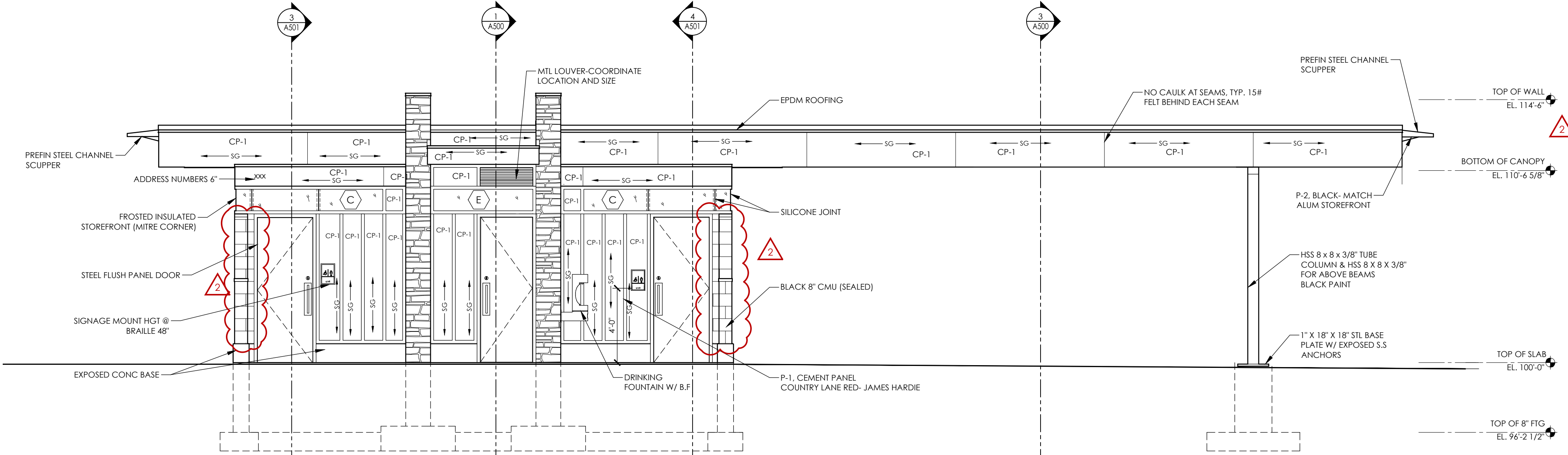
4 EXTERIOR ELEVATION
1/4" = 1'-0"



3 EXTERIOR ELEVATION
1/4" = 1'-0"



2 EXTERIOR ELEVATION
1/4" = 1'-0"



1 EXTERIOR ELEVATION
1/4" = 1'-0"

GENERAL NOTES

1. ALL MORTAR TO BE COLORED TO MATCH CMU.
2. PROTECT ALL EXPOSED CONC FOUNDATIONS FROM BLACK MORTAR STAINS.
3. ALL CMU AND STONE SURFACES TO HAVE ANIT-GRAFFITI COATING (TYP) SEE SPECS.
4. "SG" = SIDING GRAIN DIRECTION.
5. SEE SHEET A100 FOR WINDOW ELEVATIONS.
6. SEE T000 FOR FINISH SCHEDULE.
7. ALL SEAMS IN THE HARDIE SIDING SHALL BE BUTT JOINTED (NO CAULK) UNLESS OTHER NOTED. JOINTS TO HAVE 15# FELT PAPER STRIP BEHIND SEAM.
8. FILL ALL VOIDS IN EXPOSED CONCRETE FOUNDATION WALL W/CEMENT SLURRY.

SHEET NAME
EXTERIOR ELEVATIONS
SHEET NUMBER
A300

SECTION 08 41 13
ALUMINUM-FRAMED ENTRANCES AND STOREFRONTS

PART 1 – GENERAL

1.1 SECTION REQUIREMENTS

- A. Submittals: Product Data, Shop Drawings, and color Samples.

PART 2 – PRODUCTS

2.1 ALUMINUM-FRAMED STOREFRONTS

- A. Basis of Design for Window Frame:
1. Kawneer Company Inc. or Approved Equal
 2. Trifab® VersaGlaze® 451T Framing System (Thermally improved) at fixed window conditions.
 3. System Dimensions: 2" x 4-1/2"
 4. Glass: Exterior Structural Silicone Glazing
- B. Accessible Entrances: Comply with ICC/ANSI A117.1.
- C. Performance Requirements:
5. Limit deflection of framing members normal to wall plane to 1/175 of clear span for spans up to 13 feet 6 inches.
 6. Limit deflection of framing members parallel to glazing plane to L/360 of clear span or 1/8 inch, whichever is smaller.
 7. Structural Testing: Systems tested according to ASTM E 330 at 150 percent of inward and outward wind-load design pressures do not evidence material failures, structural distress, deflection failures, or permanent deformation of main framing members exceeding 0.2 percent of clear span.
 8. Air Infiltration: Limited to 0.06 cfm/sq. ft. of system surface area when tested according to ASTM E 283 at a static-air-pressure difference of 1.57 lbf/sq. ft. (75 Pa).
 9. Water Penetration: Systems do not evidence water leakage when tested according to ASTM E 331 at minimum differential pressure of 20 percent of positive wind-load design pressure, but not less than 6.24 lbf/sq. ft. (300 Pa).
- D. Aluminum: Alloy and temper recommended by manufacturer for type of use and finish indicated; ASTM B 209 sheet; ASTM B 221 (ASTM B 221M) extrusions.
- E. Glazing: As specified in Division 08 Section "Glazing."
- F. Doors: See Section 08 11 13 Hollow Metal Doors
- G. Fasteners and Accessories: Compatible with adjacent materials, corrosion resistant, nonstaining, and nonbleeding. Use concealed fasteners except for application of door hardware.
- H. Fabrication: Fabricate framing in profiles indicated for flush glazing (without projecting stops). Provide subframes and reinforcing of types indicated or, if not indicated, as required for a complete system. Factory assemble components to greatest extent possible. Disassemble components only as necessary for shipment and installation.
1. Door Framing: Reinforce to support imposed loads. Factory assemble door and frame units and factory install hardware to greatest extent possible. Reinforce door and frame units for hardware indicated. Cut, drill, and tap for factory-installed hardware before finishing components.
- I. Aluminum Finish: Fluoropolymer two-coat coating system complying with AAMA2604.
- J. Weather-strip: Provide standard weather-strip compatible with aluminum framing.

PART 3 – EXECUTION

3.1 INSTALLATION

- A. Isolate metal surfaces in contact with incompatible materials, including wood, by painting contact surfaces with bituminous coating or primer, or by applying sealant or tape recommended by manufacturer.
- B. Install components to drain water passing joints, condensation occurring within framing members, and moisture migrating within the system to exterior.
- C. Set continuous sill members and flashing in full sealant bed as specified in Division 07 Section "Joint Sealants" to produce weathertight installation.
- D. Install framing components true in alignment with established lines and grades to the following tolerances:
1. Variation from Plane: Limit to 1/8 inch in 12 feet (3 mm in 3.7 m); 1/4 inch (6 mm) over total length.

- 1
 - 2
 - 3
 - 4
 - 5
 - 6
2. Alignment: For surfaces abutting in line, limit offset to 1/16 inch (1.5 mm). For surfaces meeting at corners, limit offset to 1/32 inch (0.8 mm).
 3. Diagonal Measurements: Limit difference between diagonal measurements to 1/8 inch (3 mm).
- E. Coordinate frame preparation with hollow metal door supplier and hardware requirements.

END OF SECTION 08 41 13