



Department of Public Works

## Engineering Division

Robert F. Phillips, P.E., City Engineer

City-County Building, Room 115  
210 Martin Luther King, Jr. Boulevard  
Madison, Wisconsin 53703  
Phone: (608) 266-4751  
Fax: (608) 264-9275  
[engineering@cityofmadison.com](mailto:engineering@cityofmadison.com)  
[www.cityofmadison.com/engineering](http://www.cityofmadison.com/engineering)

### Assistant City Engineer

Michael R. Dailey, P.E.

### Principal Engineer 2

Gregory T. Fries, P.E.  
Christopher J. Petykowski, P.E.

### Principal Engineer 1

Christina M. Bachmann, P.E.  
Eric L. Dundee, P.E.  
John S. Fahrney, P.E.

### Facilities & Sustainability

Jeanne E. Hoffman, Manager

### Operations Manager

Kathleen M. Cryan

### Mapping Section Manager

Eric T. Pederson, P.S.

### Financial Manager

Steven B. Danner-Rivers

October 6, 2016

**NOTICE OF ADDENDUM  
ADDENDUM NO. 1  
Hawks Landing Hydrology Study  
CONTRACT NO. 7833**

Revise and amend the contract document(s) for the above project as stated in this addendum, otherwise, the original document shall remain in effect.

### Request for Proposal

1. Section 1.3.1, "Survey of LBMC and UBMC Hawks Landing Stormwater Detention Ponds": Replace the text of Section 1.3.1 of the RFP with the following text:

This task involves the survey of six (6) detention ponds on the Hawks Landing Golf Course (LBMC North, LBMC SW, LBMC East, UBMC North, UBMC SE, and UBMC SW Ponds) and the 30' storm easement between Lots 169 and 170. Survey boundaries and scope of services are included in Attachment C. Survey will include land survey of the area above the water level and water level. Bathymetric survey is not included. The City will arrange for the Consultant's access to the golf course for survey. The survey results are to be provided to the city in the NAD\_1983\_HARN\_WISCRS\_Dane\_County\_Feet coordinate system in a format suitable for Microstation use.

2. Section 2.10, "Schedule for Design Services": Proposal deadline has been changed. Proposals are now due to the office of the City Engineer on Friday, October 14, 2016 at 4:00pm. The City Engineer's office is Room 115 of the City/County Building at 210 Martin Luther King Jr. Blvd.
3. Figures 2A and 2B: Replace Figures 2A and 2B in original RFP with Figures 2A and 2B attached to this addendum.

### Attachments

1. Attachment C [Survey boundaries and scope of services]: Replace scope of services in original RFP with the attached survey scope of services, which removes Section E (Project Schedule). Survey will be completed as a part of this RFP, not as an individual service as

implied by this independent timeline.

2. Attachment C [Survey boundaries and scope of services]: Add attached survey boundaries for Lots 169 and 170. This survey is requested in addition to the survey requests laid out in the original RFP. This additional survey will also include a building survey of the house located on Lot 170 (1809 Hidden Hill Dr).
3. Attachment D [Hydrology study]: Add attached pond plans to Attachment D.
4. Attachment E [Map of City of Madison storm sewer system]: Add attached storm sewer file, which shows sewer for lands south of Midtown Rd.
5. Attachment G [City of Madison official map]: Add attached official map file, which shows parcel boundaries south of Midtown Rd.
6. Add Attachment I, "Lower Badger Mill Creek Stormwater Management Analyses, 2003". The Lower Badger Mill Creek Watershed Model was developed in xpSWMM. Model files can be obtained (if desired) by contacting Lauren Striegl at 608-266-4094 or [lstriegl@cityofmadison.com](mailto:lstriegl@cityofmadison.com).

Electronic version of these documents may be obtained at any of the following online locations:

State of Wisconsin, VendorNet System – [www.vendornet.state.wi.us](http://www.vendornet.state.wi.us)

City of Madison Public Works – [www.cityofmadison.com/business/pw/requestforproposals.cfm](http://www.cityofmadison.com/business/pw/requestforproposals.cfm)

Demandstar by Onvia:- [www.demandstar.com](http://www.demandstar.com)

If you are unable to download plan revisions associated with the addendum, please contact the Engineering office at 608-266-4751 receive the material by another route.

Sincerely,

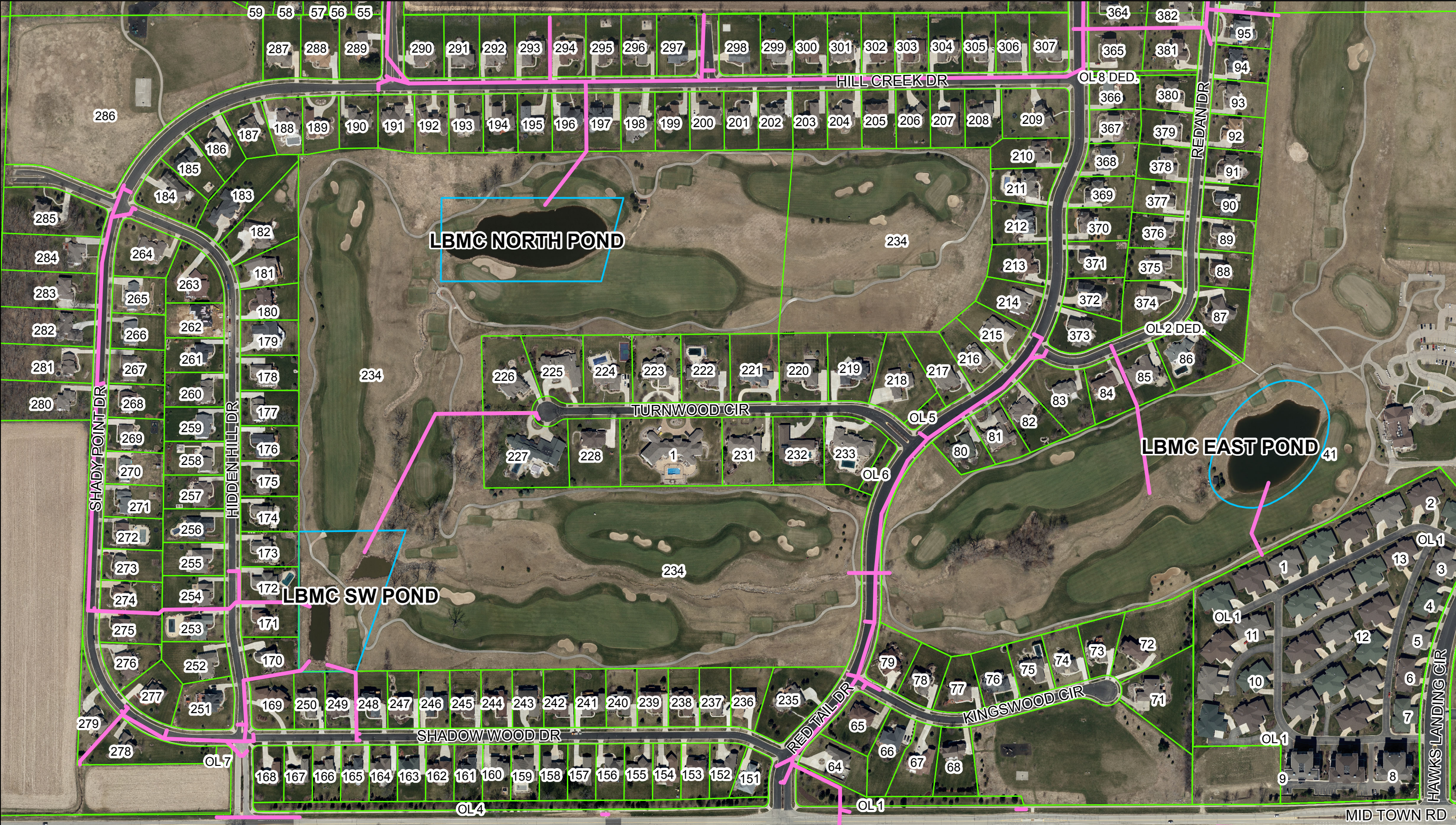
A handwritten signature in black ink, appearing to read "Robert Phillips", with a large, stylized "R" and "P".

---

Robert F. Phillips, P.E.  
City Engineer

RFP:ls





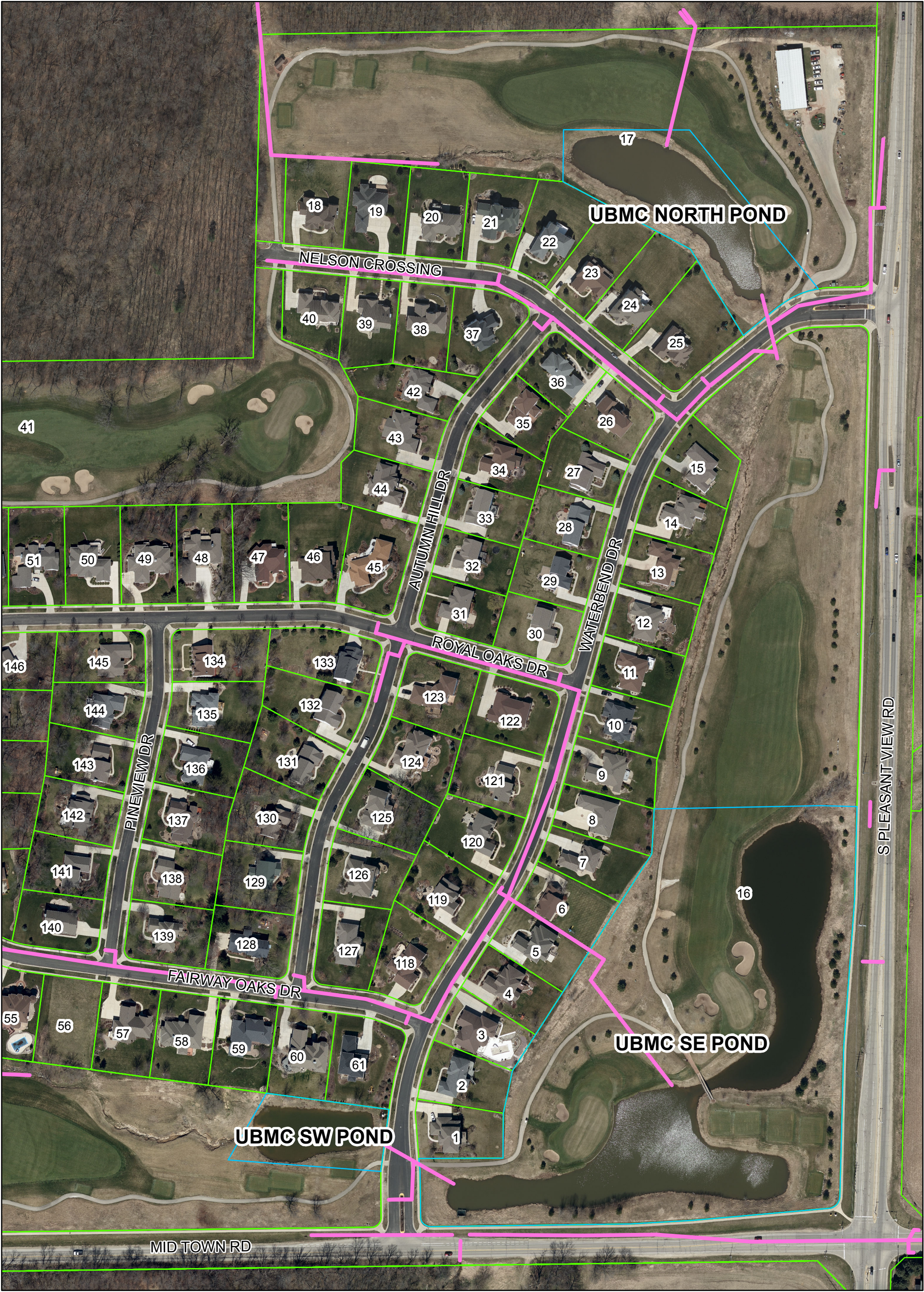
**Hawks Landing West Ponds**



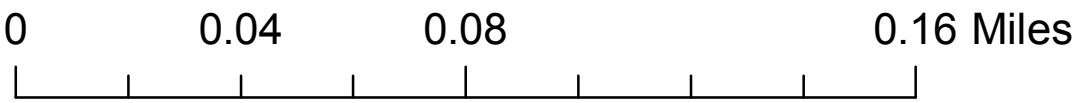
**Legend**

-  Ponds
-  Parcels
-  Storm Sewer








# Hawks Landing East Ponds



## Legend

-  Ponds
-  Storm Sewer
-  Parcels