

SOLID CONCRETE ADJUSTING  
BLOCKS OR BRICK

PRE-CAST CONCRETE GRADE  
RINGS IN CONFORMANCE WITH  
ASTM C-478 MAY BE USED IN  
LIEU OF CONCRETE BLOCKS

AIR ENTRAINED  
PORTLAND CEMENT  
MORTAR TYPE M OR S

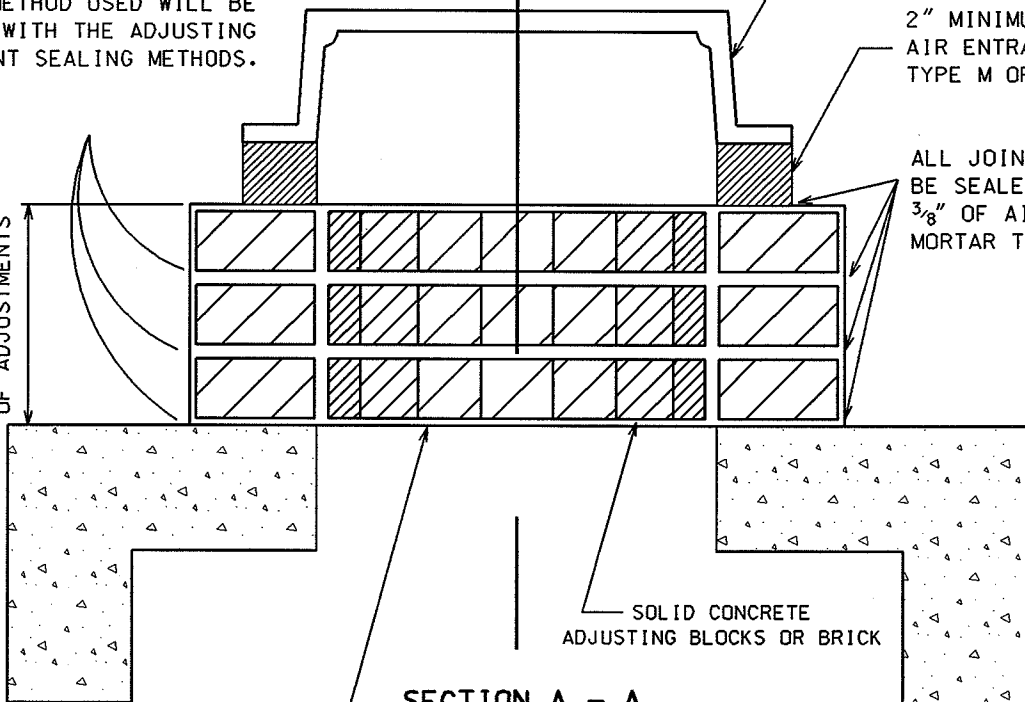
THE OUTSIDE OF ADJUSTING  
RINGS SHALL BE SEALED WITH  
A 1/2" THICK, AIR ENTRAINED  
MORTAR TYPE M OR S SEAL.  
THE METHOD USED WILL BE  
COMPATIBLE WITH THE ADJUSTING  
RING JOINT SEALING METHODS.

MADISON STANDARD  
MACHINED CAST IRON  
ACCESS STRUCTURE COVER

2" MINIMUM BED OF  
AIR ENTRAINED MORTAR  
TYPE M OR S

ALL JOINTS SHALL  
BE SEALED WITH  
3/8" OF AIR ENTRAINED  
MORTAR TYPE M OR S.

MIN. 3" / MAX. 9"  
OF ADJUSTMENTS



SOLID CONCRETE  
ADJUSTING BLOCKS OR BRICK

SECTION A - A

PRE-CAST CONCRETE GRADE  
RINGS IN CONFORMANCE WITH  
ASTM C-478 MAY BE USED IN  
LIEU OF CONCRETE BLOCKS

2004

CITY OF MADISON ENGINEERING DIVISION
SAS CHIMNEY AND CASTING
STANDARD DETAIL DRAWING 5.7.15