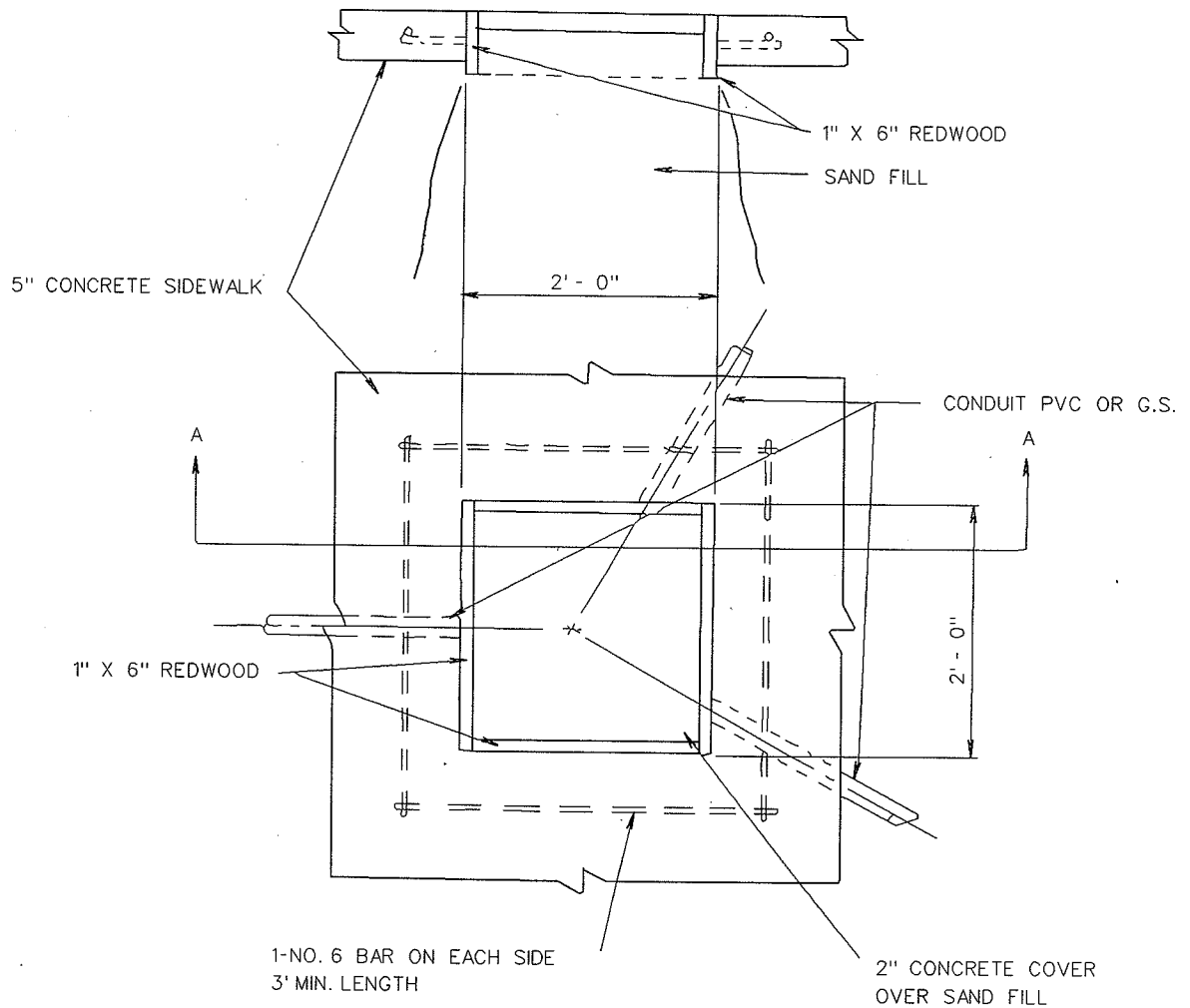


SECTION A-A



NOTE:

CONDUIT OR DUCT SHALL ENTER
BOX-OUT "ON CENTER" FOR
MAXIMUM DISTANCE BETWEEN
CONDUIT OR DUCT ENDS.

2004

CITY OF MADISON
TRAFFIC ENGINEERING DIVISION

**ELECTRICAL CONDUIT
BOX-OUT DETAIL**

STANDARD DETAIL DRAWING 6.28