

# GENERAL NOTES

TYPE 2-A RAMPS SHALL BE USED IN NEW DEVELOPMENT UNLESS OTHERWISE APPROVED BY THE CITY ENGINEER

DETAILS OF CONSTRUCTION, MATERIALS AND WORKMANSHIP NOT SHOWN ON THIS DRAWING SHALL CONFORM TO THE PERTINENT REQUIREMENTS OF THE STANDARD SPECIFICATIONS AND THE APPLICABLE SPECIAL PROVISIONS.

RAMPS SHALL BE BUILT AT 12H:1V OR FLATTER. WHEN NECESSARY, THE SIDEWALK ELEVATION MAY BE LOWERED TO MEET THE HIGH POINT ON THE RAMP.

DETECTABLE WARNING FIELD SHALL BE MEASURED AND PAID BY THE SQUARE FOOT AS "CURB RAMP DETECTABLE WARNING FIELD".

CURB RAMP DETECTABLE WARNING FIELD MATERIALS AND DEVICES SHALL BE APPROVED BY THE CITY ENGINEER. THE COLOR OF THE DETECTABLE WARNING FIELD SHALL BE SAFETY YELLOW OR APPROVED EQUAL AND IS INCIDENTAL TO THE BID ITEM OF "CURB RAMP DETECTABLE WARNING FIELD".

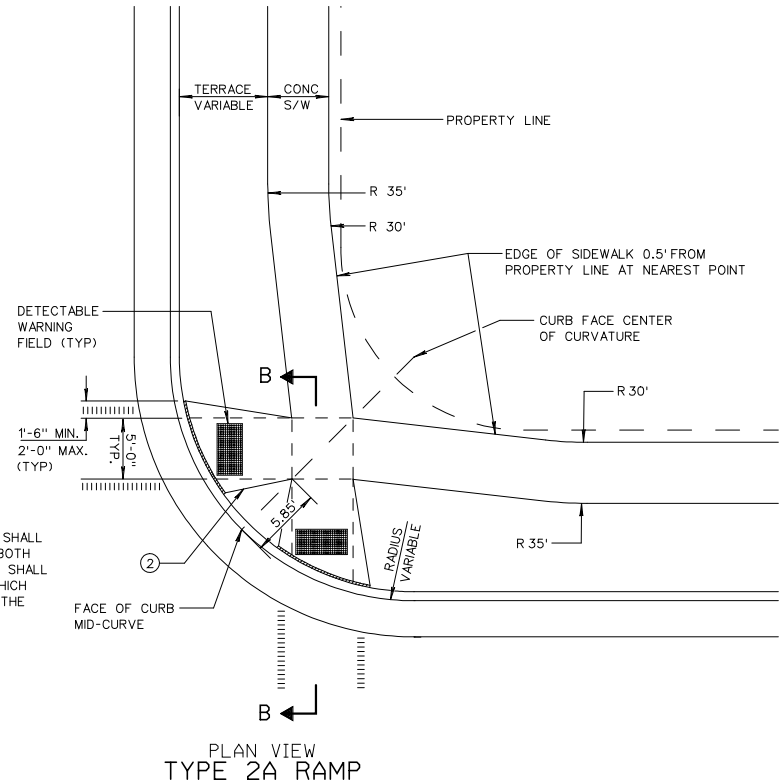
SURFACE TEXTURE OF THE RAMP SHALL BE OBTAINED BY COARSE BROOMING TRANSVERSE TO THE SLOPE OF THE RAMP.

DETECTABLE WARNING FIELDS FOR BIKE PATHS SHALL BE 6' WIDE FOR A 10' WIDE RAMP OPENING AND 8' WIDE FOR A 12' WIDE OPENING. THE GAP BETWEEN PANELS SHALL BE 1'. DETECTABLE WARNING FIELDS SHALL BE CENTERED ON THE OPENING FOR AN 8' WIDE PATH.

- ① THIS POINT IS AN EXTENSION OF OUTSIDE EDGE OF APPROACHING SIDEWALK WHERE IT MEETS THE BACK OF CONCRETE CURB.
- ② WHEN THIS DISTANCE IS LESS THAN 6'-0" IT MAY BE DIFFICULT TO ACHIEVE A 12H:1V SLOPE, OR FLATTER, ON THE RAMP. REDUCE CURB HEIGHT IN TRIANGLE AREA TO ACHIEVE 12H:1V SLOPE, OR FLATTER, ON RAMP. 2" MINIMUM CURB HEIGHT.

## LEGEND

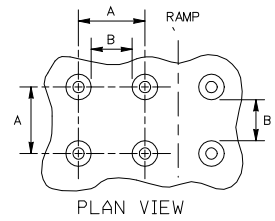
- ===== 1" EXPANSION JOINT-SIDEWALK
- - - - - CONTRACTION JOINT FIELD LOCATED
- ||||| PAVEMENT MARKING CROSSWALK (WHITE)
- - - - - ALTERNATIVE LAYOUT



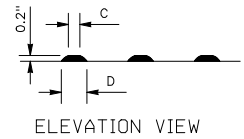
PLAN VIEW  
TYPE 2A RAMP

	MIN.	MAX.
A	1.6"	2.4"
B	0.65"	1.5"
C	x	x
D	0.9"	1.4"

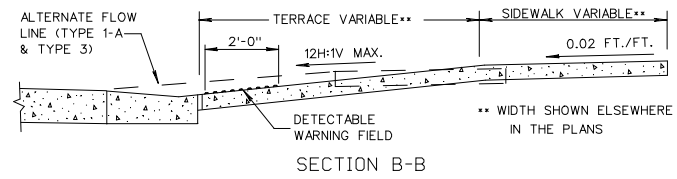
\* THE C DIMENSION IS 50% TO 65% OF THE D DIMENSION.



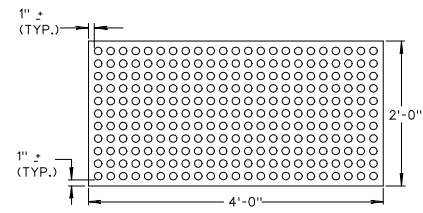
TRUNCATED DOMES  
DETECTABLE WARNING  
PATTERN DETAIL



ELEVATION VIEW



SECTION B-B



PLAN VIEW  
DETECTABLE WARNING  
FIELD (TYPICAL)

NOTE: MATERIALS AND METHOD OF CONSTRUCTION FOR TRUNCATED DOMES SHALL BE SPECIFIED IN SPECIAL PROVISIONS OR AS REQUIRED BY THE CITY ENGINEER

2007

CITY OF MADISON  
ENGINEERING DIVISION

**CURB RAMPS GENERAL  
AND  
CURB RAMP TYPE 2-A**

STANDARD DETAIL DRAWING 3.04

3.04