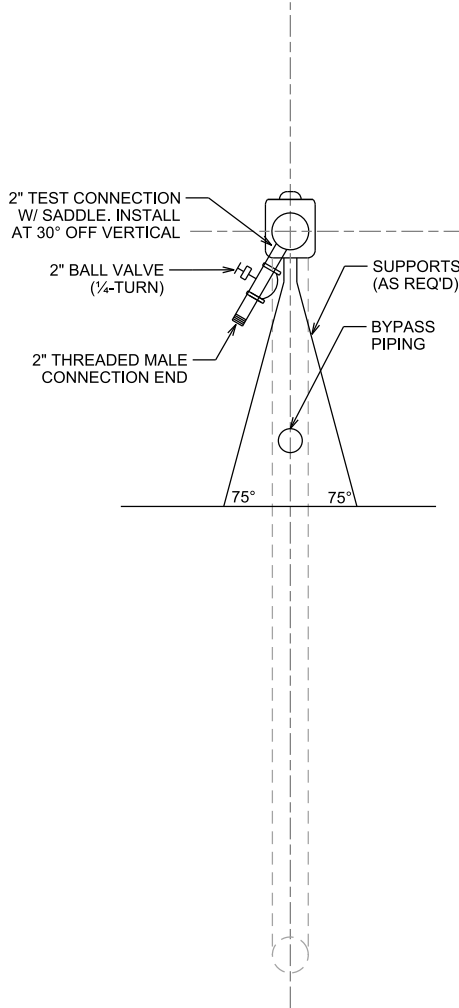
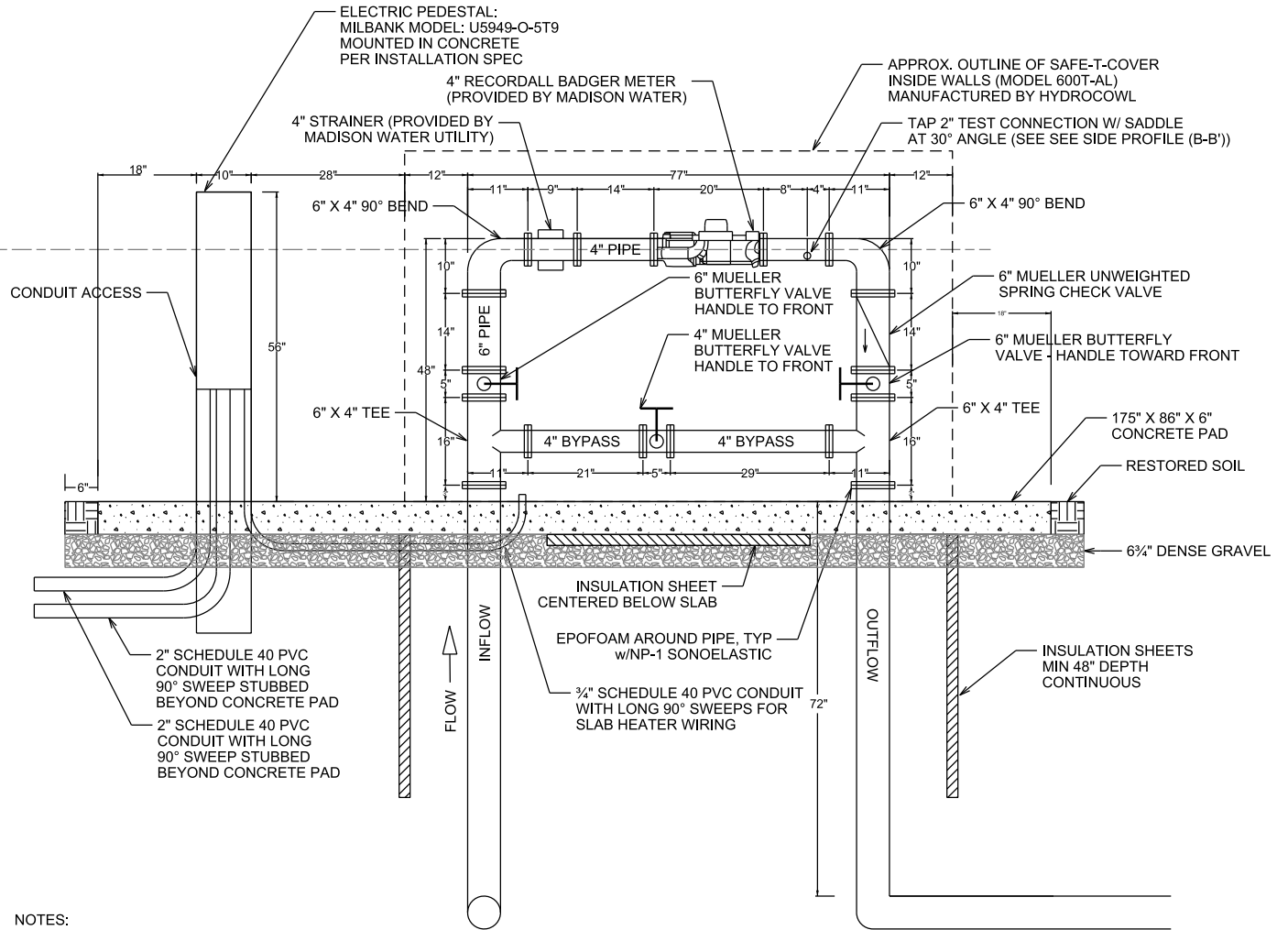


**SIDE PROFILE
(PIPE ONLY)**



FRONT PROFILE



NOTES:

ALL DIMENSIONS AND PIPING CORRESPOND TO 4" METER SIZE ONLY. VERIFY ALL DIMENSIONS AND PIPING CONFIGURATION WITH MADISON WATER UTILITY PRIOR TO BEGINING WORK.

- ALL ABOVE-GROUND PIPE AND FITTINGS SHALL BE FLANGED JOINT AS FOLLOWS:
1. PIPE: COMPLY WITH ANSI A21.51, THICKNESS CLASS 53 WITH PIPE FLANGES FACED AND DRILLED TO ANSI CLASS 125 STANDARD TEMPLATE UNLESS OTHERWISE DESIGNATED ON THE DRAWINGS.
 2. FITTINGS: COMPLY WITH ANSI A21.10 OR ANSI B16.1.
 3. FLANGE GASKETS: 1/16-INCH THICK SHEET RUBBER, FULL FACE TYPE OR 1/8-INCH THICK FULL FACED AMERICAN TORUSEAL FLANGE GASKET.
 4. FLANGE BOLTS, STUDS, AND NUTS: ZINC PLATED TYPE COMPLYING WITH ANSI B16.1.

CITY OF MADISON
WATER UTILITY

NOT TO SCALE

WATER METER ENCLOSURE
(DIMENSIONS/PIPING SHOWN FOR 4" METER ONLY)