

Madison, Wisconsin

INDEX OF SHEETS

SHEET NO.	1	TITLE
SHEET NO.	D1	GENERAL NOTES
SHEET NO.	P1	DOTY ST. SIDEWALK PLAN & PROFILE
SHEET NO.	U1	SEWER OVERVIEW PLAN
SHEET NO.	U2	DOTY ST. SEWER PLAN & PROFILE
SHEET NO.	U3-U4	STORM SEWER SCHEDULE
SHEET NO.	U5	SANITARY SEWER SCHEDULE
SHEET NO.	W1	WATER PLAN & PROFILES
SHEET NO.	W2	WATER IMPACT PLAN
SHEET NO.	W3	WATER MATERIALS & DETAILS

CITY OF MADISON

CITY ENGINEERING DIVISION

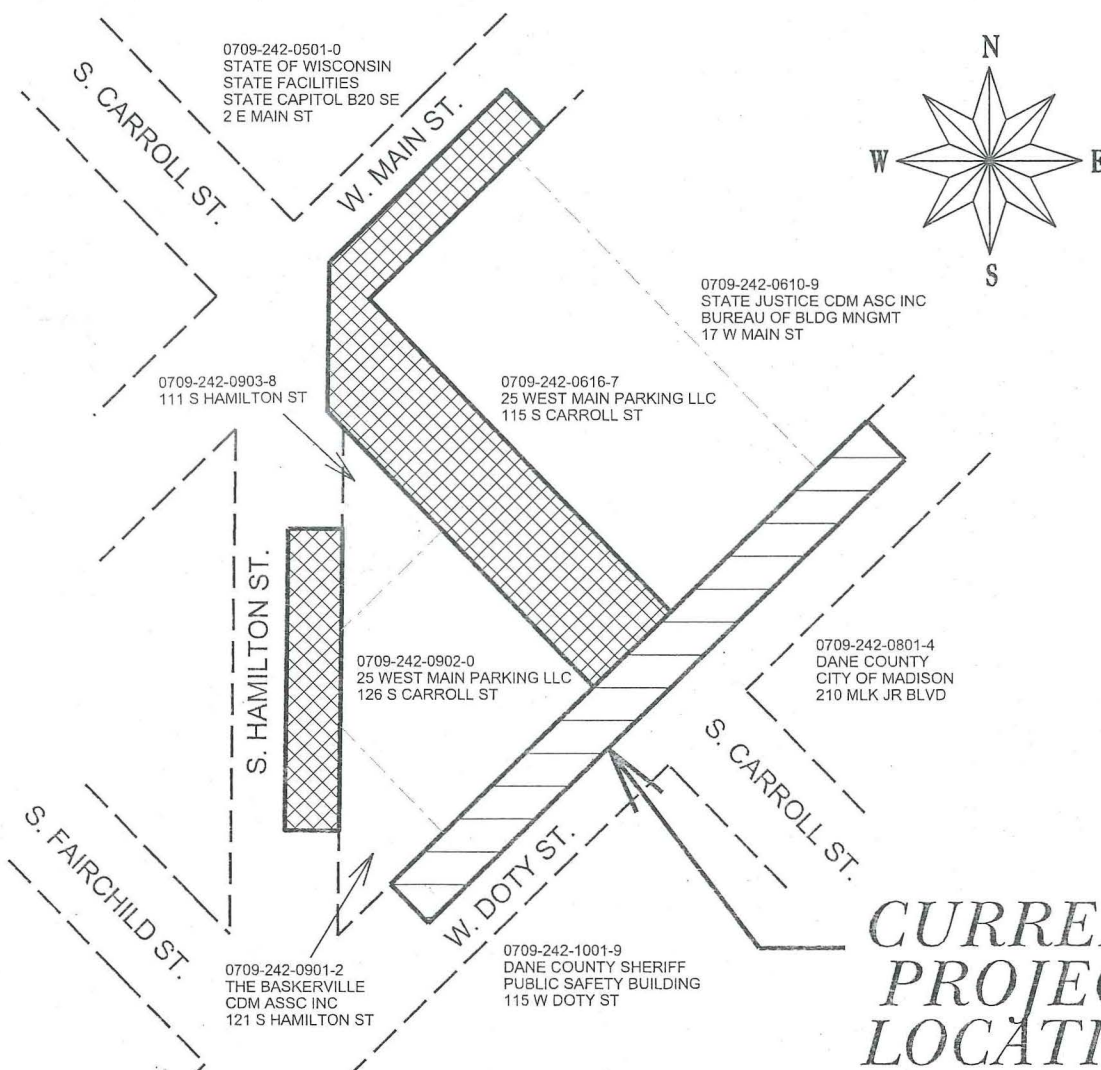
DEPARTMENT OF PUBLIC WORKS

PLAN OF PROPOSED IMPROVEMENT

ANCHORBANK REDEVELOPMENT - 25 W. MAIN STREET

UTILITIES AND SIDEWALK
DESIGN ON W. DOTY ST ONLY*

CITY PROJECT NO. 10905 - CITY CONTRACT NO. 2342 - MUNIS NO. 10905



*AREA OF ANTICIPATED FUTURE WORK
ON S. HAMILTON ST., S. CARROLL ST., W.
MAIN ST. EXPECTED DESIGN INCLUDES:

- STREET
- SIDEWALK
- STREETSCAPE
- LANDSCAPING
- SEWERS
- WATER
- ELECTRICAL
- PARKING
- PAVEMENT MARKING
- TRAFFIC CONTROL

ALL DESIGN COMPONENTS WILL ALSO
BE ADDED AND REVISED FOR W. DOTY
ST. AT A LATER DATE

PUBLIC IMPROVEMENT PROJECT
APPROVED

JUNE 2, 2015

BY THE COMMON COUNCIL
OF MADISON, WISCONSIN

PUBLIC IMPROVEMENT DESIGN
APPROVED BY:

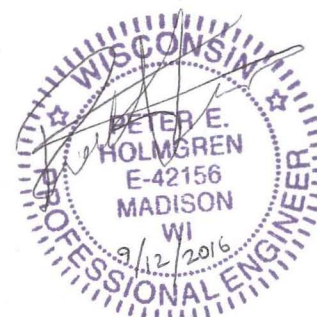
City Engineer

Date

TRAFFIC CONTROL AND MARKING
DESIGNED BY:

NOT
APPLICABLE
FOR THIS
ISSUANCE

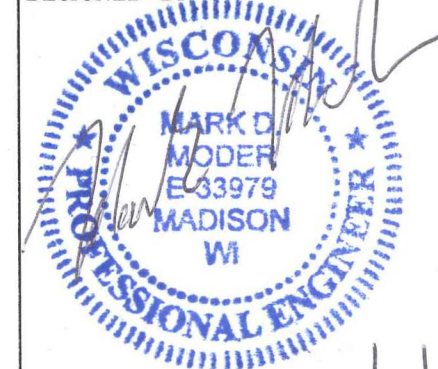
WATER
DESIGNED BY:



ELECTRICAL
DESIGNED BY:

NOT
APPLICABLE
FOR THIS
ISSUANCE

SANITARY SEWER
DESIGNED BY:



STREET
DESIGNED BY:



STORM SEWER
DESIGNED BY:





THIS PLAN SET IS FOR UTILITIES AND SIDEWALK DESIGN ON W. DOTY ST ONLY

ANTICIPATED FUTURE WORK ON S. HAMILTON ST., S. CARROLL ST., W. MAIN ST. EXPECTED DESIGN INCLUDES:

- STREET
- SIDEWALK
- STREETSCAPE
- LANDSCAPING
- SEWERS
- WATER
- ELECTRICAL
- PARKING
- PAVEMENT MARKING
- TRAFFIC CONTROL

ALL DESIGN COMPONENTS WILL ALSO BE ADDED AND REVISED FOR W. DOTY ST. AT A LATER DATE

CONVENTIONAL SIGNS	
FIELD VERIFY ALL UTILITY LOCATIONS	
GAS	— G —
STORM SEWER	— ST —
SANITARY SEWER	— SAN —
WATER	— W —
OVERHEAD ELECTRIC	— OH —
UNDERGROUND ELECTRIC	— E —
UNDERGROUND ELECTRIC AMERICAN TRANSMISSION CO.	ATC E ATC
POWER POLE	⊕
ADA COMPLIANT RAMP W/ DETECTABLE WARNING FIELD	
COMBUSTIBLE FLUIDS	

ALL PAVEMENT WITHIN THE WEST DOTY STREET RIGHT OF WAY SHALL BE TYPE C PAVEMENT.

ALL GUTTERS SHALL DRAIN WITH A MINIMUM GRADES OF 0.5% TOWARD STORM SEWER INLETS.

THE CROSS SLOPE OF SIDEWALKS AND BARRIER FREE SIDEWALK CURB RAMPS SHALL BE 1.5%. THE LONGITUDINAL GRADE OF BARRIER FREE SIDEWALK CURB RAMPS SHALL NOT EXCEED 8.33%. ALL SIDEWALK RAMPS SHALL BE CONSTRUCTED ACCORDING TO S.D.D. 3.03. AT ALL OTHER LOCATIONS THE LONGITUDINAL GRADE OF SIDEWALKS SHALL NOT EXCEED 5.0 % OR THE ADJACENT STREET GRADE WHICHEVER IS GREATER NOR BE LESS THAN 0.5% AND SHALL DRAIN TOWARD STORM SEWER INLETS. SIDE SLOPES WITHIN TEN FEET OF A PUBLIC SIDEWALK SHALL NOT EXCEED 4.00:1. ALL SIDEWALK AND SIDEWALK RAMP ELEVATIONS AND GRADES SHALL BE FIELD VERIFIED AND SET TO COMPLY WITH THE CITY OF MADISON STANDARD SPECIFICATIONS AND THE A.D.A. GUIDELINES.

OBTAIN A PRINT OUT OF THE ALIGNMENT FROM THE CITY ENGINEER PRIOR TO STAKING THIS PROJECT.

CURB STATION AND OFFSETS SHALL BE TO THE FACE OF CURB UNLESS OTHERWISE INDICATED. CURB ELEVATIONS SHALL BE TO THE TOP OF CURB (OR EXTENDED TOP OF CURB FOR DRIVEWAYS OR RAMPS) UNLESS OTHERWISE INDICATED.

POWER POLES AND OTHER OBSTRUCTIONS SHALL BE MOVED TO PROVIDE 2 FEET MINIMUM OF CLEAR DISTANCE FROM ANY FACE OF CURB OR EDGE OF SIDEWALK.

ANY INFORMATION SHOWN ON THIS PLAN, WHICH IS NOT PART OF THIS PROJECT, IS PRELIMINARY AND NOT FOR CONSTRUCTION.

THERE MAY BE EXISTING UTILITIES OR OTHER FEATURES WHICH ARE EITHER NOT SHOWN OR SHOWN INCORRECTLY ON THIS PLAN. IT IS THE RESPONSIBILITY OF THE DEVELOPER TO LOCATE AND IDENTIFY ALL UTILITIES AND TOPOGRAPHY WHICH MAY AFFECT THE CONSTRUCTION OF THESE IMPROVEMENTS.

ALL PERMANENT SIGNING AND POSTING WILL BE DETERMINED AND PROVIDED BY THE TRAFFIC ENGINEERING DIVISION, FOLLOWING CONSTRUCTION OF THESE IMPROVEMENTS.

THE DEVELOPER SHALL PROVIDE, INSTALL AND MAINTAIN ALL STREET END BARRICADES, SIGNING AND TRAFFIC CONTROL, AS REQUIRED BY THE CITY TRAFFIC ENGINEER.

PAVEMENT SAWCUTS SHALL BE AS DIRECTED BY THE CITY CONSTRUCTION ENGINEER. SAWCUTS SHOWN ON THE PLAN ARE APPROXIMATE.

DAMAGE TO ANY EXISTING CURB, PAVEMENT, SIDEWALK, ETC. THAT IS TO REMAIN SHALL BE REPAIRED BY THE DEVELOPER/CONTRACTOR AS DIRECTED BY THE ENGINEER.

CONTRACTOR/DEVELOPER SHALL SUBMIT A TRAFFIC CONTROL PLAN TO CITY TRAFFIC ENGINEERING AT LEAST 10 WORKING DAYS PRIOR TO THE START OF WORK. WORK WITHIN THE RIGHT-OF-WAY SHALL NOT BEGIN UNTIL THE TRAFFIC CONTROL PLAN IS APPROVED.

ANY PAVEMENT MARKINGS THAT ARE REMOVED OR DAMAGED SHALL BE REPLACED BY THE DEVELOPER/CONTRACTOR AS DIRECTED BY CITY TRAFFIC ENGINEERING.

THE LOCATION AND INFORMATION FOR PROPOSED NEW TREES, IN THE PUBLIC RIGHT OF WAY OR ON PUBLIC LANDS ARE APPROXIMATE AND ARE SHOWN FOR REFERENCE ONLY.

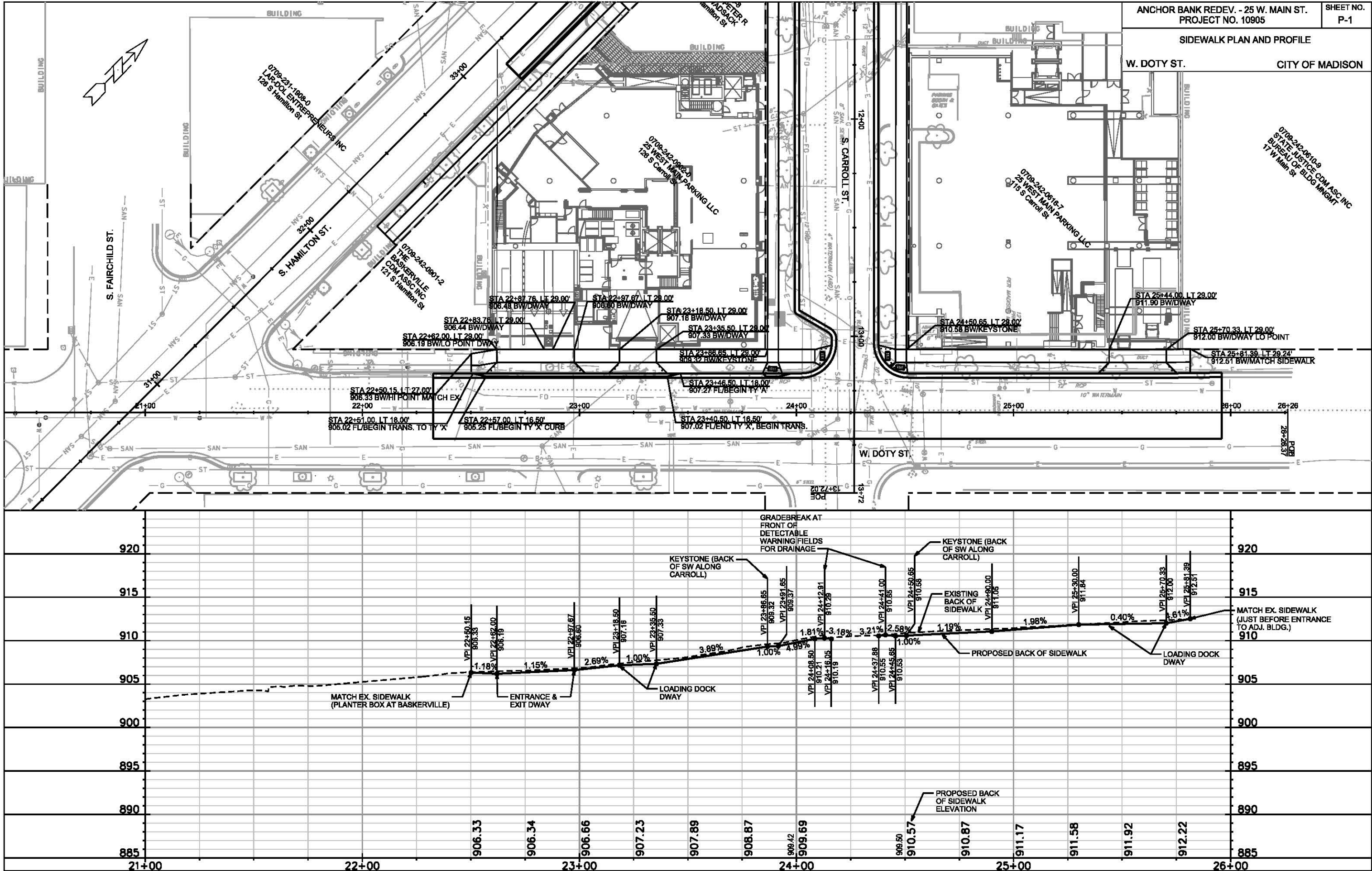
NO TREES IN THE RIGHT OF WAY OR ON PUBLIC LANDS SHALL BE TRIMMED, PRUNED, REMOVED OR ADVERSELY AFFECTED IN ANY WAY UNTIL THE DEVELOPER HAS RECEIVED WRITTEN PERMISSION FROM THE CITY ENGINEER OR CITY FORESTER. SAID WRITTEN PERMISSION SHALL INCLUDE LANGUAGE INDICATING THAT SECTION 10.101 OF THE MADISON GENERAL ORDINANCES AND ADMINISTRATIVE PROCEDURE MEMORANDUM NO. 6-2, REFERRING TO NOTIFICATION OF PROPERTY OCCUPANTS AND/OR OWNERS, HAS BEEN COMPLIED WITH.

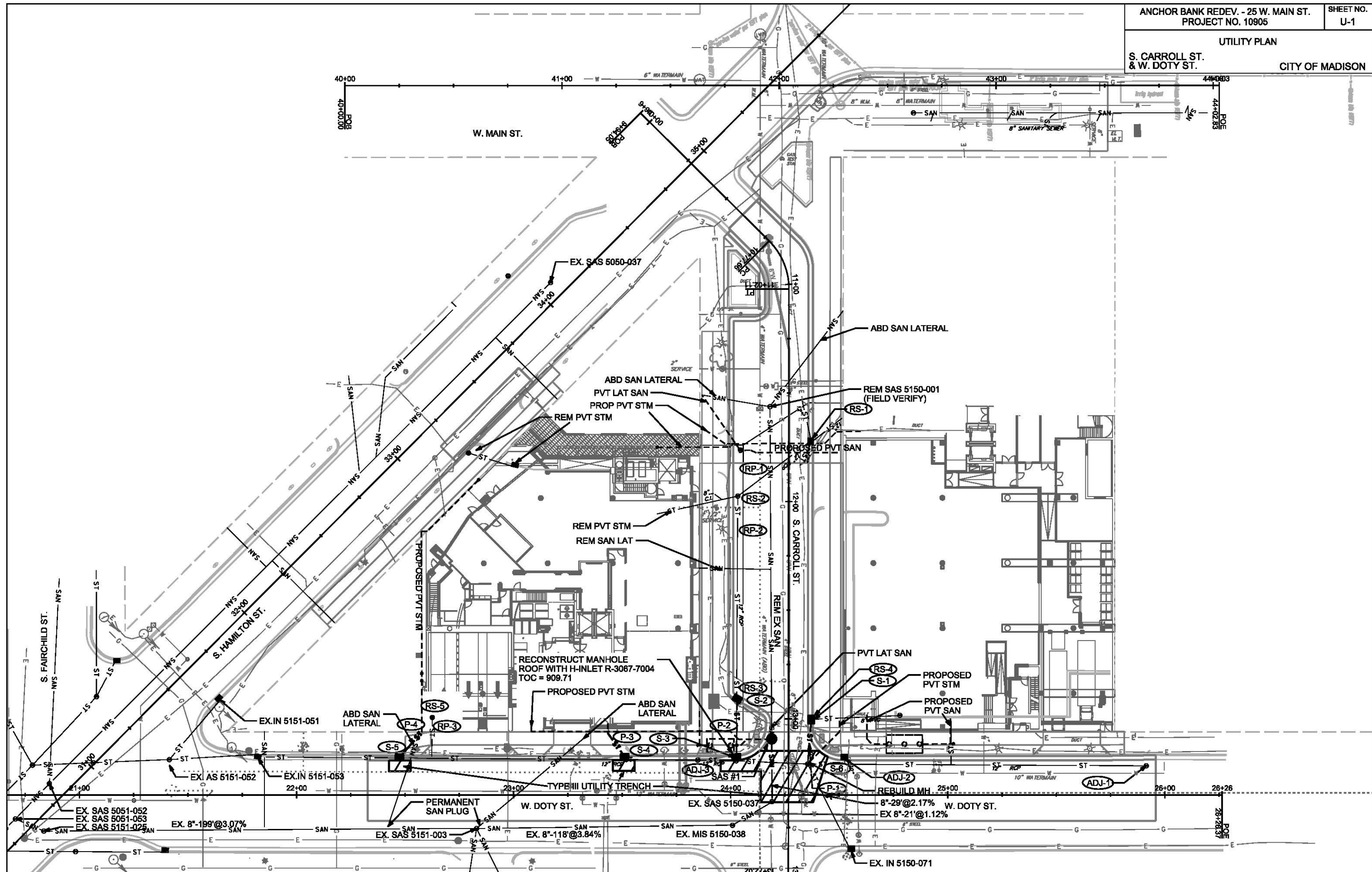
PLOT SCALE: _____

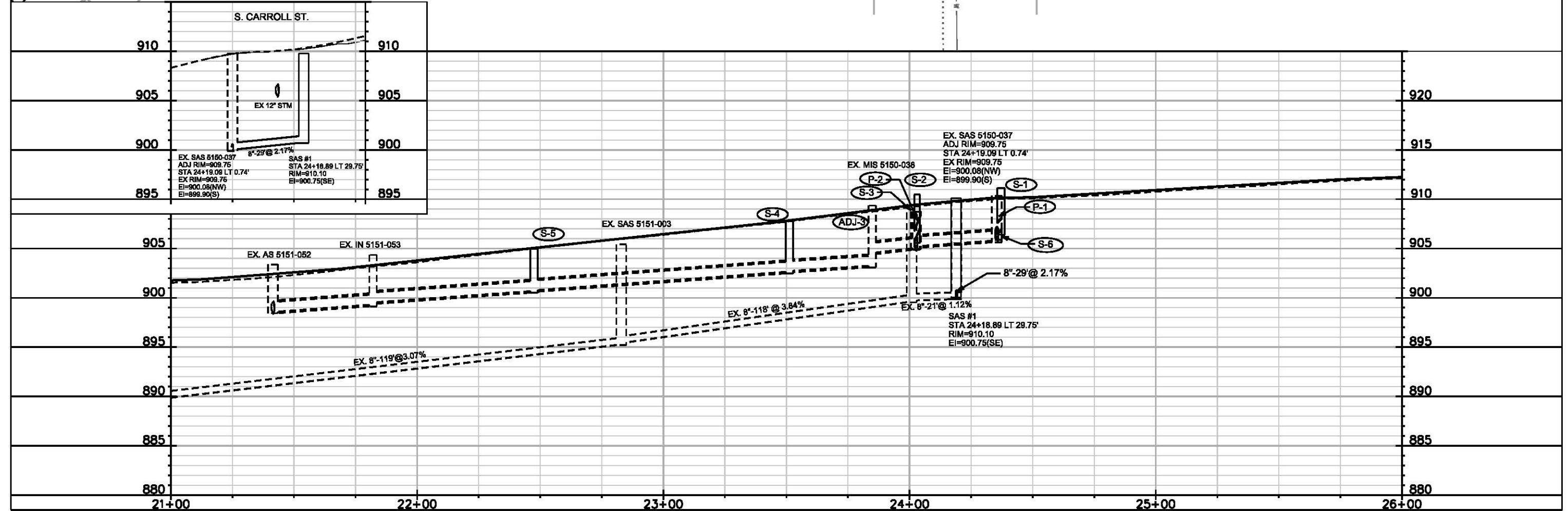
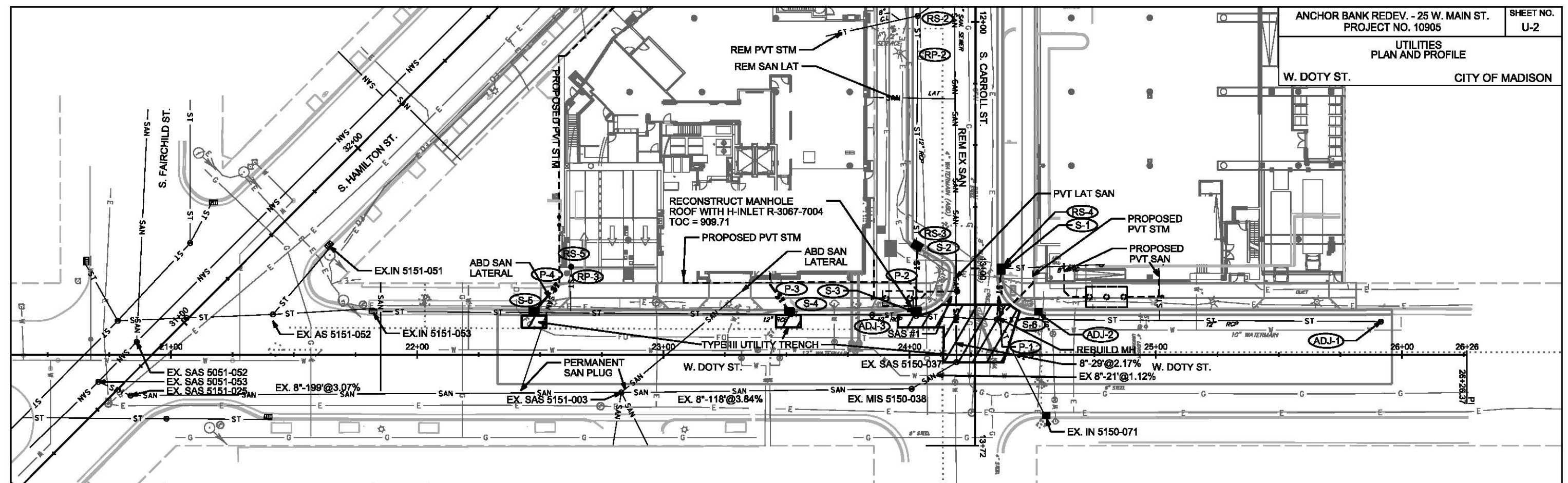
PLOT NAME: _____

REV. DATE: _____

ORIGINATOR: CITY OF MADISON, STREETS DIVISION







STORM SEWER SCHEDULE

STORM SEWER SCHEDULE

CITY OF MADISON

PROPOSED STORM STRUCTURES

STRUC. NO.	STATION	LOCATION (OFFSET)	TYPE	TOP OF CASTING	E.I.	DEPTH	NOTES
S CARROLL ST							
S-1	13+00.38	LT-10.50		911.15	907.30	3.85	W/3067-7004-V
S-2	12+90.85	RT-2364.00		910.48	907.12	3.36	LP;W/3067-7004-VB
W DOTY ST							
S-3	24+02.63	LT-17.80		909.71			SEE NOTE (1)
S-4	23+10.94	LT-17.50		907.80	902.69	5.11	W/3067-7004-V
S-5	22+47.42	LT-17.50		904.96	901.16	3.80	W/3067-7004-V
S-6	24+35.45	LT-14.22		910.34	905.55	4.79	SEE NOTE (2)

PROPOSED STORM PIPES

PIPE NO.	FROM (DNSTM)	TO (UPSTM)	DISCH. E.I.	INLET E.I.	PLAN (PAY) LGTH (FT)	PIPE LGTH (FT)	SLOPE (%)	PIPE SIZE	TYPE	NOTES
P-1	AS 5150-108	S-1	906.04	907.30	20.5	17.0	7.41%	12"	RCP	
P-2	AS 5150-066	S-2	904.96	907.12	28.5	25.3	8.54%	12"	RCP	
P-3	S-4	PVT LAT	904.81			14.3		8"	PVC	
P-4	S-5	PVT LAT	903.00			15.3		8"	PVC	

NOTE: PLAN LENGTH (PAY LENGTH) IS FROM CENTER OF STRUCTURE TO CENTER OF STRUCTURE. PIPE LENGTH IS ACTUAL LENGTH OF PIPE FROM STRUCTURE WALL TO STRUCTURE WALL. SLOPE CALCULATED USING PIPE LENGTH.

STANDARD NOTES:

- ABBREVIATIONS: AE = APRON ENDWALL; RCP = REINFORCED CONCRETE PIPE; HERCP = HORIZONTAL ELLIPTICAL REINFORCED CONCRETE PIPE; DNA = DOES NOT APPLY; SAS = SEWER ACCESS STRUCTURE; LP = LOW POINT INLET STRUCTURE; FP = FIELD POURED STRUCTURE; TR = TOP OF CONCRETE ROOF; NCM = NO CROWN MATCH FOR PIPES; UD = UNDERDRAIN
- APPROXIMATE DISCHARGE E.I. GIVEN, ADJUST E.I. AND PIPE SLOPE IN THE FIELD.
- TOP OF CASTING GRADE GIVEN IS THE TOP OF CURB FOR INLET STRUCTURES AND THE FLOWLINE OF THE CLOSED CASTING FOR SAS's.
- TOP OF CONCRETE ROOF (TR) IS 1.25' BELOW TOP OF CASTING UNLESS OTHERWISE NOTED.
- ALL REINFORCED CONCRETE PIPES TO BE CLASS III UNLESS OTHERWISE NOTED.
- SURVEYOR TO CONFIRM THAT ALL INLET STATION / OFFSETS LINE UP WITH PROPOSED CURB AND GUTTER.
- ALL STRUCTURES CALLED OUT AS FIELD POURED SHALL BE FIELD POURED. ALL OTHER STRUCTURES (NOT INDICATED AS FIELD POURED) SHALL BE SUBMITTED TO CITY ENGINEERING FOR APPROVAL IF PRECAST STRUCTURES ARE PREFERRED. CONTACT KYLE FRANK OF CITY ENGINEERING AT (608) 266-4098 FOR PRECAST APPROVALS, FAX SHOP DRAWINGS TO (608)264-9275, OR EMAIL SHOP DRAWINGS TO KFRANK@CITYOFMADISON.COM.

SPECIFIC NOTES

- (1) RECONSTRUCT MANHOLE (AS 5150-066) ROOF WITH H-INLET R-3067-7004-V, TOC=909.71
- (2) RECONSTRUCT MANOHOLE (AS 5150-108) SIDEWALL TO INSTALL PVT STM MAIN (12" PVC)

STORM SEWER SCHEDULE

ANCHOR BANK REDEV. - 25 W MAIN ST. PROJECT NO. 10905	SHEET NO. U-4
STORM SEWER SCHEDULE	
CITY OF MADISON	

REMOVE STORM STRUCTURES

STRUC. NO.	ID NO.	STATION	LOCATION (OFFSET)	TYPE	NOTES
RS-1	IN 5150-063	11+72.16	LT-9.98	H-INLET	
RS-2	AS 5150-067	11+97.54	RT-23.47	MH (4X4)	
RS-3	IN 5150-064	12+90.72	RT-23.65	H-INLET	
RS-4	IN 5150-070	13+00.44	LT-10.31	H-INLET	
RS-5	PVT CB	22+62.48	LT-39.45	CB	

REMOVE STORM PIPES

REMOVE NO.	REMOVE FROM	REMOVE TO	LGTH (FT)	PIPE SIZE	PIPE TYPE	PAID (Y/N)	NOTES
RP-1	IN 5150-063	AS 5150-067	42	12	RCP		
RP-2	AS 5150-067	IN 5150-064	124	12"	RCP		
RP-3	PVT CB	AS5150-068/MI 5151-054	18	8"			

STORM SEWER ULOs

ULO NO.	STATION	LOCATION (OFFSET)	TYPE	NOTES
------------	---------	----------------------	------	-------

STORM SEWER ABANDONMENTS

PIPE NO.	FROM (DNSTM)	TO (UPSTM)	LGTH (FT)	PIPE SIZE	TYPE	PAID (Y/N)	NOTES
-------------	-----------------	---------------	--------------	--------------	------	---------------	-------

STORM STRUCTURE ADJUSTMENTS

ADJUST NO.	STATION	LOCATION (OFFSET)	EX. TOC ELEV.	ADJUST ELEV.	ADJUST DIFF.	NOTES
ADJ-1	AS 5150-065	25+91.40, LT 13.40	912.08	912.11	-0.03	
ADJ-2	IN 5150-069	24+52.50 LT 17.21	910.59	910.61	-0.02	
ADJ-3	AS 5150-068	23+84.83, LT 15.95	909.35	908.73	0.62	

SPECIFIC NOTES

- STANDARD NOTES:**
- ABBREVIATIONS: AE = APRON ENDWALL; RCP = REINFORCED CONCRETE PIPE; HERCP = HORIZONTAL ELLIPTICAL REINFORCED CONCRETE PIPE; DNA = DOES NOT APPLY; SAS = SEWER ACCESS STRUCTURE; LP = LOW POINT INLET STRUCTURE; FP = FIELD POURED STRUCTURE; TR = TOP OF CONCRETE ROOF; NCM = NO CROWN MATCH FOR PIPES; UD = UNDERDRAIN
 - APPROXIMATE DISCHARGE E.I. GIVEN, ADJUST E.I. AND PIPE SLOPE IN THE FIELD.
 - TOP OF CASTING GRADE GIVEN IS THE TOP OF CURB FOR INLET STRUCTURES AND THE FLOWLINE OF THE CLOSED CASTING FOR SAS's.
 - TOP OF CONCRETE ROOF (TR) IS 1.25' BELOW TOP OF CASTING UNLESS OTHERWISE NOTED.
 - ALL REINFORCED CONCRETE PIPES TO BE CLASS III UNLESS OTHERWISE NOTED.
 - SURVEYOR TO CONFIRM THAT ALL INLET STATION / OFFSETS LINE UP WITH PROPOSED CURB AND GUTTER.
 - ALL STRUCTURES CALLED OUT AS FIELD POURED SHALL BE FIELD POURED. ALL OTHER STRUCTURES (NOT INDICATED AS FIELD POURED) SHALL BE SUBMITTED TO CITY ENGINEERING FOR APPROVAL IF PRECAST STRUCTURES ARE PREFERRED. CONTACT KYLE OF CITY ENGINEERING AT (608) 266-4098 FOR PRECAST APPROVALS, FAX SHOP DRAWINGS TO (608)264-9275, OR EMAIL SHOP DRAWINGS TO KFRANK@CITYOFMADISON.COM.

SANITARY SEWER SCHEDULE

PROPOSED SANITARY STRUCTURES

SAS NO.	STATION	LOCATION (OFFSET)	TOP OF CASTING	E.I.	DEPTH	NOTES
S CARROLL ST						
SAS #1	13+09.26	RT-8.23	909.78	900.75	9.03	

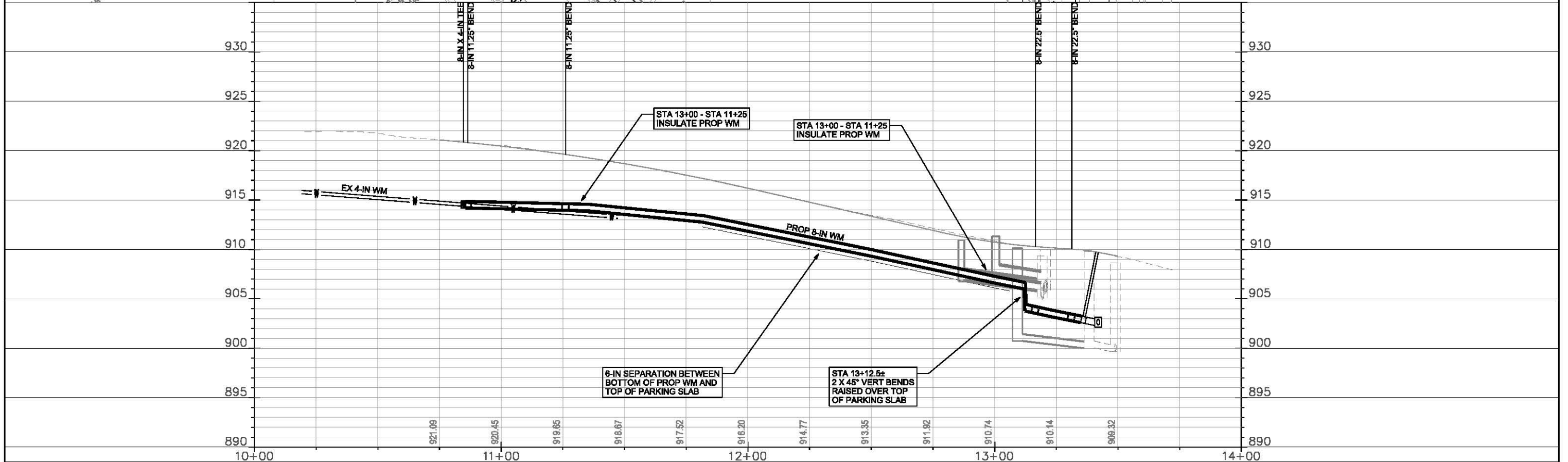
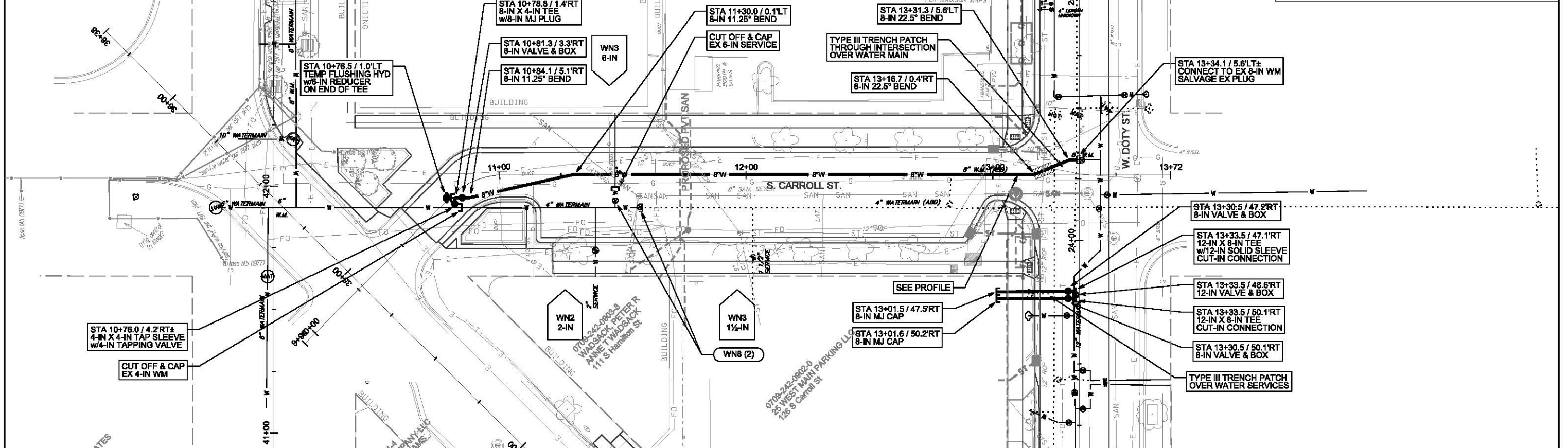
SANITARY STRUCTURE ADJUSTMENTS

SAS NO.	STATION	LOCATION (OFFSET)	EX. TOC ELEV.	ADJUST ELEV.	ADJUST DIFF.	NOTES
SAS 5150-037	24+19.19	LT-0.74	909.75	909.75		

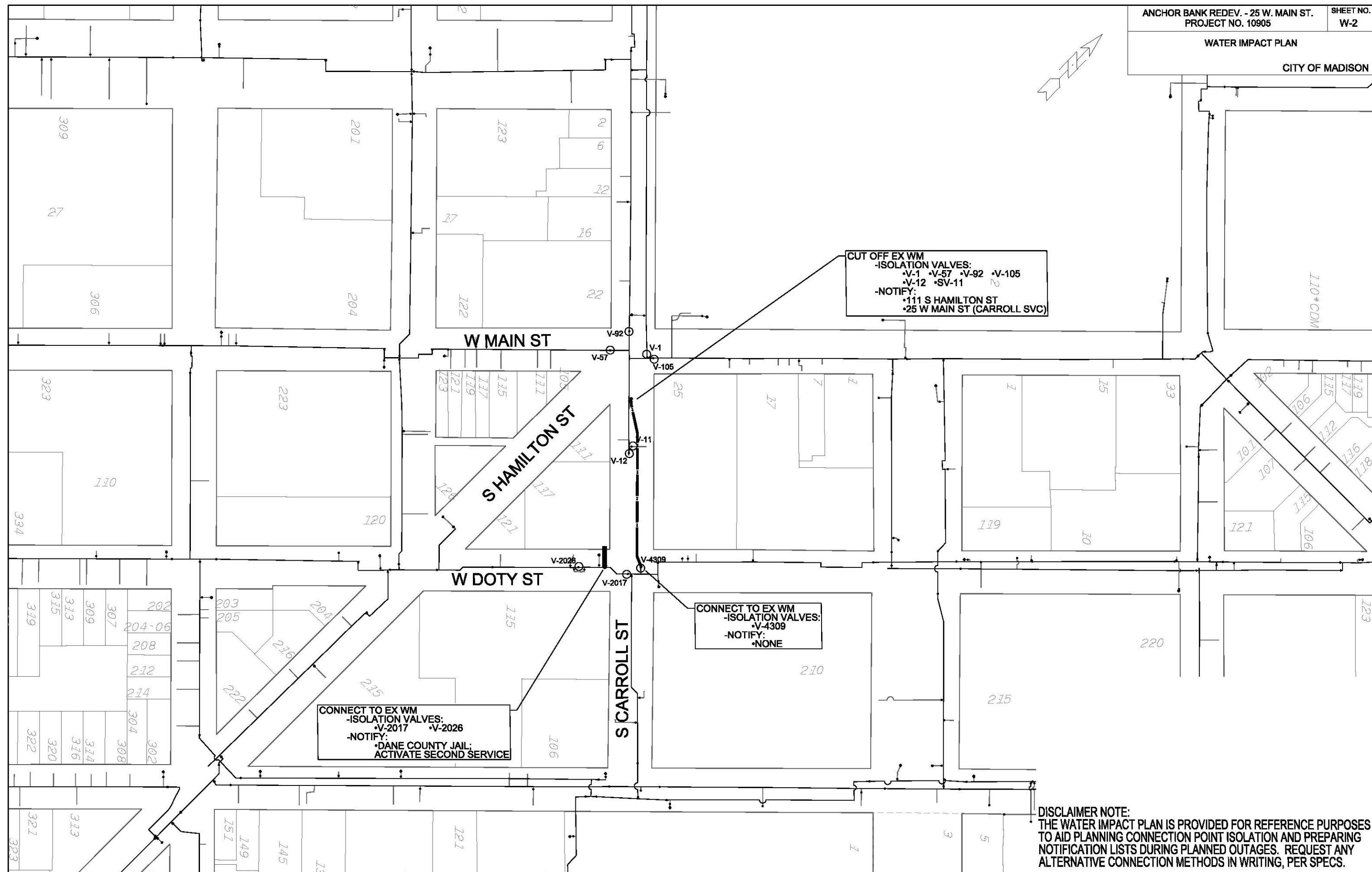
PROPOSED SANITARY PIPES

FROM (DNSTM)	TO (UPSTM)	DWNSTRM E.I.	UPSTRM E.I.	PLAN (PAY) LGTH (FT)	SLOPE (%)	PIPE SIZE	PVC TYPE	NOTES
ROAD								
SAS #1	SAS 5150-037	900.08	900.71	29	2.17%	8"	ASTM D3034 SDR-35	

SPECIFIC NOTES



CITY OF MADISON



DISCLAIMER NOTE:
THE WATER IMPACT PLAN IS PROVIDED FOR REFERENCE PURPOSES
TO AID PLANNING CONNECTION POINT ISOLATION AND PREPARING
NOTIFICATION LISTS DURING PLANNED OUTAGES. REQUEST ANY
ALTERNATIVE CONNECTION METHODS IN WRITING, PER SPECS.

WATER ESTIMATE OF MATERIALS

CITY OF MADISON

CONSTRUCTION NOTES:

1. CONSTRUCT NEW WATER MAIN 6.0' BELOW FINISHED GRADE, UNLESS OTHERWISE NOTED. INSULATE MAIN WITH POLYSTYRENE BOARD AT UTILITY CROSSINGS OR OTHER AREAS IDENTIFIED BY ENGINEER AS HAVING INADEQUATE COVER.
2. VERIFY SIZE OF EXISTING WATER SERVICES AND RECONNECT SERVICES AS INDICATED.
3. MINIMIZE DISRUPTION OF SERVICE TO EXISTING CUSTOMERS. NOTIFY PER CONTRACT REQUIREMENTS OF ANY PLANNED WATER OUTAGE.
4. THE EXISTING UTILITIES SHOWN ON THIS PLAN REPRESENT THE BEST INFORMATION AVAILABLE TO THE WATER UTILITY AT THE TIME OF PLAN PREPARATION. CONTRACTOR IS RESPONSIBLE FOR HAVING EACH UTILITY LOCATED PRIOR TO COMMENCING WORK.

 INDICATES INSULATION AT STORM SEWER CROSSING

WN1 REPLACE THE EXISTING LEAD SERVICE WITH A NEW COPPER SERVICE.

WN2 EXTEND AND RECONNECT THE EXISTING COPPER SERVICE TO THE NEW WATER MAIN.

WN3 EXISTING SERVICE TO BE ABANDONED WHEN THE WATER MAIN IS CUT OFF.

WN4 DISCONNECT FROM THE OLD WATER MAIN AND RECONNECT THE EXISTING COPPER WATER SERVICE LATERAL TO THE NEW WATER MAIN.

WN5 RELOCATE THE EXISTING FIRE HYDRANT.

WN6 ABANDON WATER VALVE ACCESS STRUCTURE.

WN7 FURNISH AND INSTALL THE NEW TOP SECTION FOR THE WATER ACCESS STRUCTURE.

WN8 ABANDON THE VALVE BOX.

WN9 FURNISH THE DITCH, COMPACTION, AND ALL MATERIALS AND LABOR FOR THE INSTALLATION OF NEW SERVICE LATERAL.

WN10 REMOVE AND SALVAGE EXISTING HYDRANT

WN11 REPLACE THE EXISTING COPPER SERVICE WITH A COPPER SERVICE

ESTIMATE OF PROJECT MATERIALS:

* ESTIMATE OF MATERIALS IS FOR INFORMATION ONLY. ENGINEER DOES NOT GUARANTEE ACCURACY OF MATERIAL TAKE-OFF. ALWAYS REFER TO PLANS.

WATER MAIN AND FITTING MATERIALS	
4-IN PIPE (LF)	<10
8-IN PIPE (LF)	330
12-IN PIPE (LF)	<10
POLY WRAP (LF)	370
8-IN VALVES & BOXES	3
12-IN VALVES & BOXES	1
12-IN X 8-IN TEES	2
8-IN X 4-IN TEES	1
8-IN 45° BENDS	2
8-IN 22.5° BENDS	2
8-IN 11.25° BENDS	2
8-IN MJ PLUGS	1
4-IN MJ CAPS	1
6-IN MJ CAPS	1
8-IN MJ CAPS	2
12-IN SOLID SLEEVES	1
8-IN X 6-IN REDUCERS (TEMP)	1
5-IN HYDRANTS (TEMP)	1

CITY MATERIALS

4-IN X 4-IN TAPPING SLEEVE	1
4-IN TAPPING VALVE & BOX	1

MISC. MATERIALS

INSULATION (LF)	160
COPPER TUBING (1-IN TO 2-IN)	AS REQ

TO OBTAIN LOCATION OF PARTICIPANTS' UNDERGROUND FACILITIES BEFORE YOU DIG IN WISCONSIN

CALL DIGGERS HOTLINE
TOLL FREE
811 OR 1-800-242-8511
FAX-A-LOCATE 1-800-338-3860
TDD (FOR HEARING IMPAIRED) 1-800-542-2289

WIS. STATUTE 182.0175 (1974)
REQUIRES MIN. OF 3 WORK DAYS
NOTICE BEFORE YOU EXCAVATE.

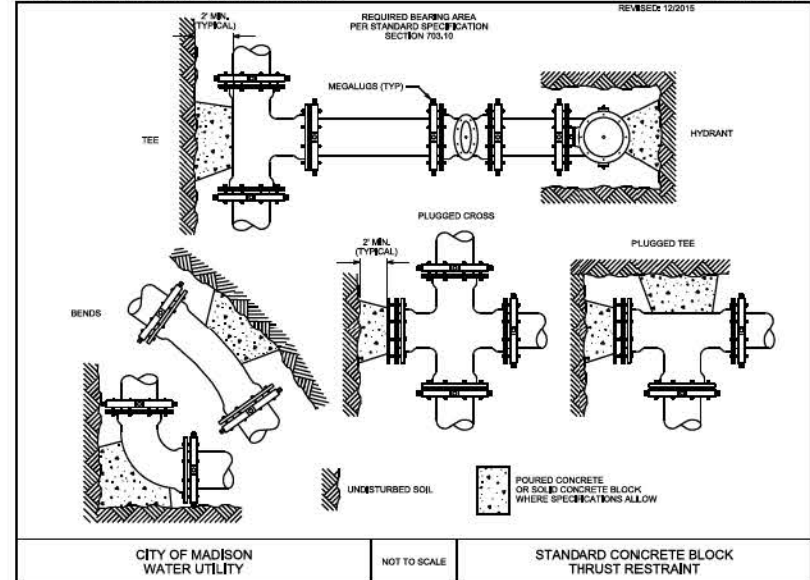


DISCLAIMER NOTE:
UTILITY LOCATIONS SHOWN ARE APPROXIMATE ONLY. IT SHALL BE THE CONTRACTOR'S RESPONSIBILITY TO DETERMINE THE EXACT HORIZONTAL AND VERTICAL LOCATION OF ALL EXISTING UNDERGROUND AND OVERHEAD UTILITIES PRIOR TO COMMENCING WORK.

PART VI - WATER MAINS AND SERVICE LATERALS

DETAIL DRAWING NO. 7.13

REVISED: 12/2015

CITY OF MADISON
WATER UTILITY

NOT TO SCALE

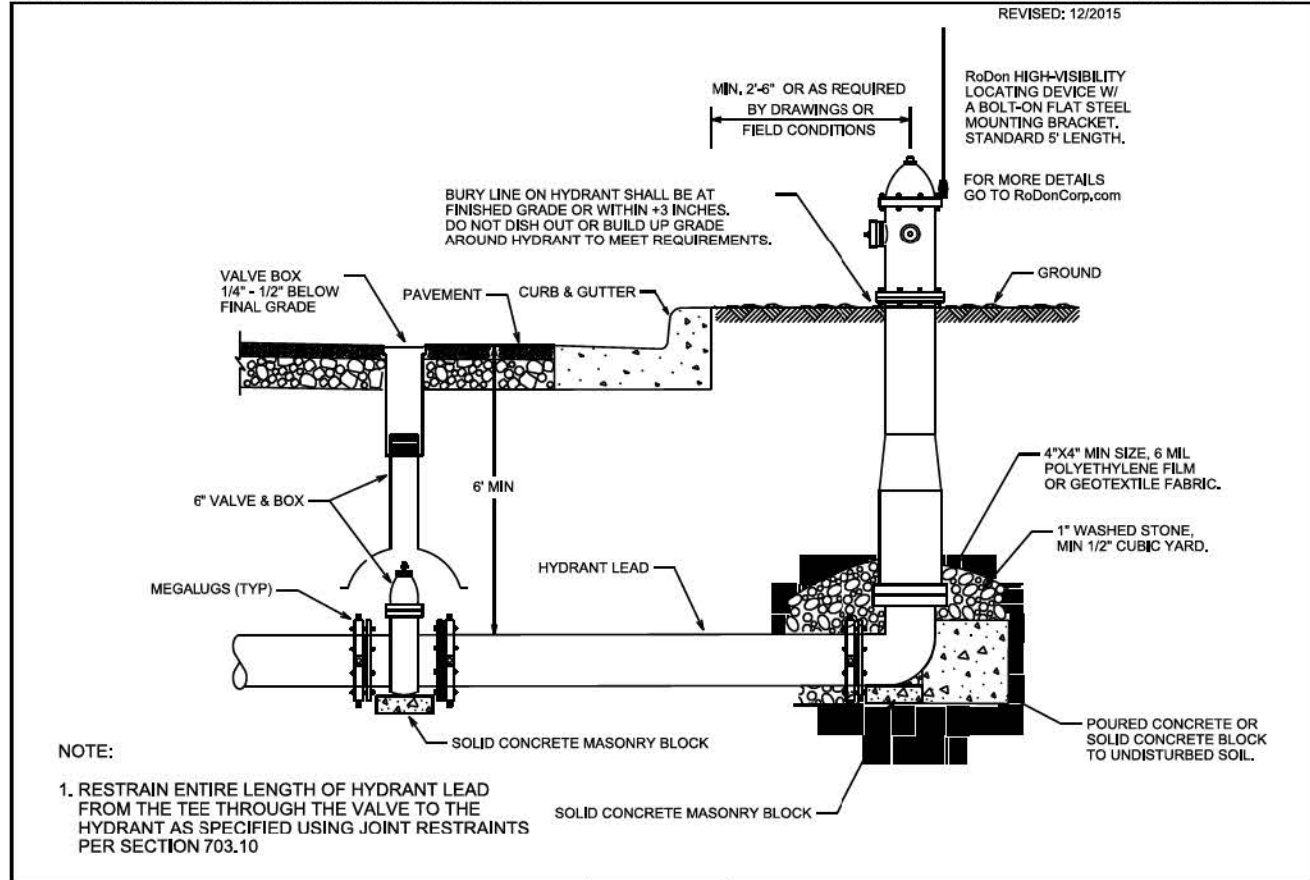
STANDARD CONCRETE BLOCK
THRUST RESTRAINT

City of Madison Standard Specifications for Public Works Construction

PART VII - WATER MAINS AND SERVICE LATERALS

DETAIL DRAWING NO. 7.04

REVISED: 12/2015



NOTE:

1. RESTRAIN ENTIRE LENGTH OF HYDRANT LEAD FROM THE TEE THROUGH THE VALVE TO THE HYDRANT AS SPECIFIED USING JOINT RESTRAINTS PER SECTION 703.10

CITY OF MADISON
WATER UTILITY

NOT TO SCALE

TYPICAL HYDRANT INSTALLATION

City of Madison Standard Specifications for Public Works Construction