

Madison, Wisconsin

INDEX OF SHEETS - STREET GRADES AND GEOMETRICS

SHEET NO.	TITLE
1	NOTES AND DETAILS
D1-D4	ANCIENT OAK LANE
P1	MOONLIGHT TRAIL
P2	

INDEX OF SHEETS - UTILITIES

SHEET NO.	TITLE
U1	ANCIENT OAK LANE
U2	MOONLIGHT TRAIL
U3	STORM SEWER EASEMENT
U4	STORM SEWER SCHEDULE
U5	WATER MATERIAL LIST

CITY OF MADISON

CITY ENGINEERING DIVISION DEPARTMENT OF PUBLIC WORKS

PLAN OF PROPOSED IMPROVEMENT

LINDEN PARK

PHASE 7

PUBLIC IMPROVEMENT PROJECT APPROVED
JUNE 3, 2008
BY THE COMMON COUNCIL
OF MADISON, WISCONSIN

PUBLIC IMPROVEMENT DESIGN
APPROVED BY:

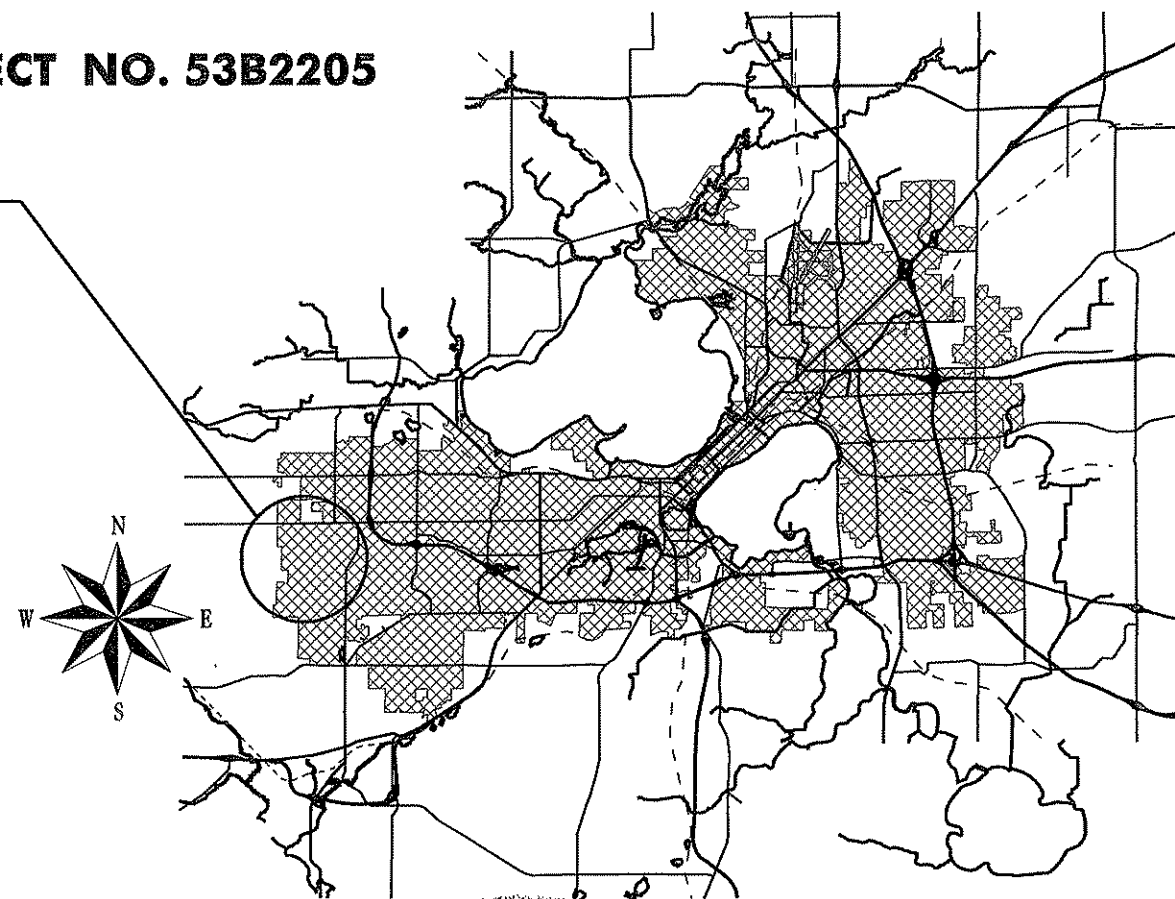
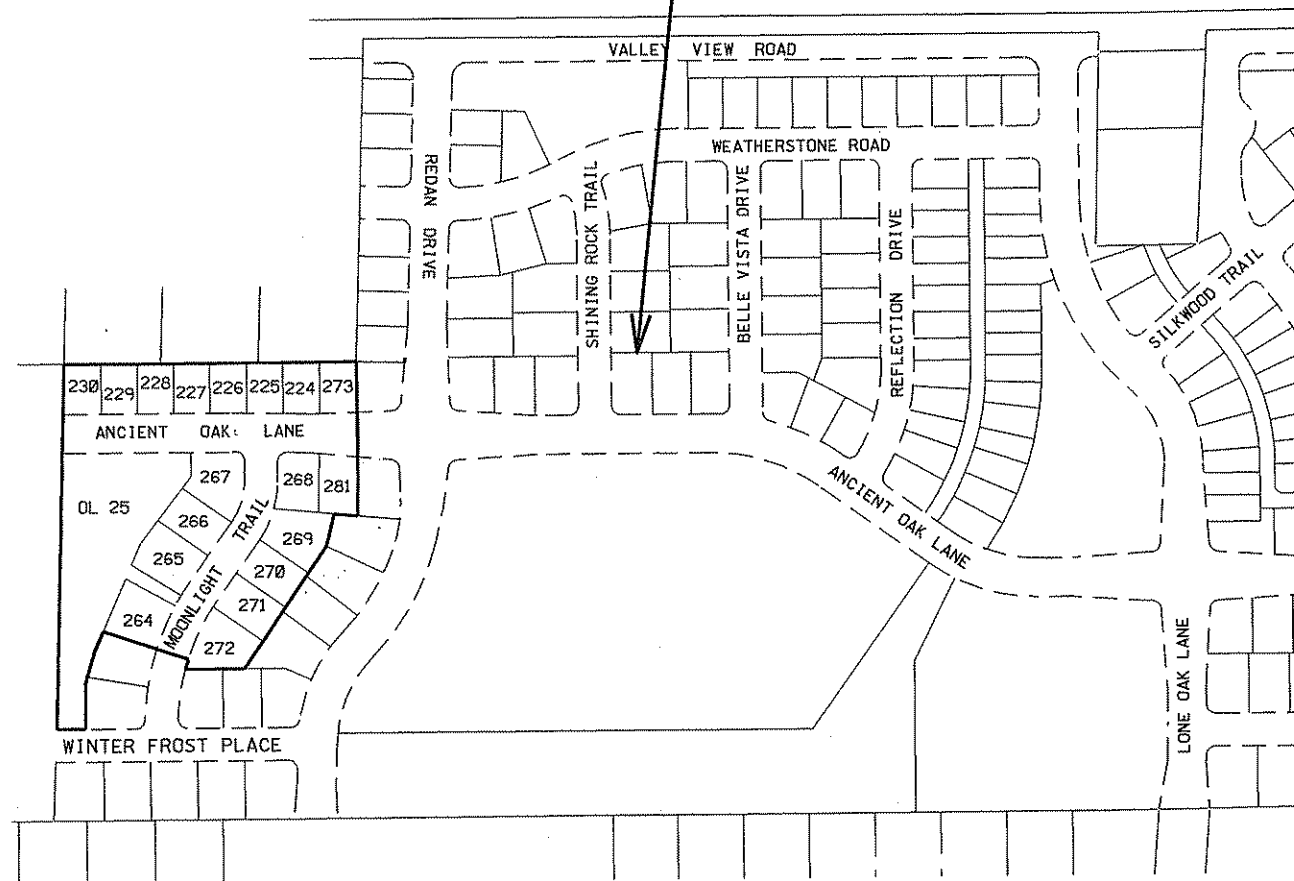
[Signature] 7/08/08
City Engineer Date

ANCIENT OAK LANE AND MOONLIGHT TRAIL

CITY PROJECT NO. 53B2205

**PROJECT
LOCATION**

PHASE LIMITS



STREET GRADES
DESIGNED BY:

[Signature]
WISCONSIN
PROFESSIONAL ENGINEER
7-7-08

STORM SEWER AND DITCHING
DESIGNED BY:

[Signature]
WISCONSIN
PROFESSIONAL ENGINEER
7/3/08

SANITARY SEWER
DESIGNED BY:

[Signature]
WISCONSIN
PROFESSIONAL ENGINEER
7/3/08

WATER DISTRIBUTION
DESIGNED BY:

[Signature]
WISCONSIN
PROFESSIONAL ENGINEER

SIGNAL LIGHTING & ELECTRICAL
DESIGNED BY:

[Signature]
WISCONSIN
PROFESSIONAL ENGINEER

GEOMETRICS
DESIGNED BY:

[Signature]
WISCONSIN
PROFESSIONAL ENGINEER

CIVIL ENGINEER

TRAFFIC ENGINEER

TRAFFIC ENGINEER

THE LOCATION AND INFORMATION FOR PROPOSED NEW TREES, IN THE PUBLIC RIGHT OF WAY OR ON PUBLIC LANDS ARE APPROXIMATE AND ARE SHOWN FOR REFERENCE ONLY. THE LOCATIONS, SPECIFICATIONS AND PLANTING METHODS OF ALL PROPOSED NEW OR REPLACEMENT TREES IN THE PUBLIC RIGHT OF WAY OR ON PUBLIC LANDS SHALL BE APPROVED BY THE CITY FORESTER PRIOR TO INSTALLATION.

NO TREES IN THE RIGHT OF WAY OR ON PUBLIC LANDS SHALL BE TRIMMED, PRUNED, REMOVED OR ADVERSELY AFFECTED IN ANY WAY UNTIL THE DEVELOPER HAS RECEIVED WRITTEN PERMISSION FROM THE CITY ENGINEER OR CITY FORESTER. SAID WRITTEN PERMISSION SHALL INCLUDE LANGUAGE INDICATING THAT SECTION 10.101 OF THE MADISON GENERAL ORDINANCES AND ADMINISTRATIVE PROCEDURE MEMORANDUM NO. 6-2, REFERRING TO NOTIFICATION OF PROPERTY OCCUPANTS AND/OR OWNERS, HAS BEEN COMPLIED WITH.

ALL PAVEMENT IN THE ANCIENT OAK LANE RIGHT OF WAY SHALL BE TYPE "B" AND ALL PAVEMENT IN THE MOONLIGHT TRAIL RIGHT OF WAY SHALL BE TYPE "A" PER STANDARD DETAIL DRAWING 4.02.

ALL ISLANDS SHALL HAVE TYPE "E" C & G PER S.D.D. 3.08 AND MOUNTABLE NOSES PER S.D.D. 3.13. ALL OTHER C & G SHALL BE TYPE "A" PER S.D.D. 3.06.

ISLAND INTERIORS SHALL BE OF SOD WHERE THE BACK TO BACK OF CURB DIMENSION IS GREATER THAN 6'.

UNDERDRAINS SHALL BE INSTALLED, PER STANDARD DETAIL DRAWING 4.05, ON PAGE 2 OF THESE PLANS, FOR 75' ON EACH SIDE OF THE LOW POINT, OR TO THE NEAREST CURB HIGH POINT. ALL UNDERDRAIN SHALL BE WRAPPED.

ALL GUTTERS SHALL DRAIN WITH A MINIMUM GRADES OF 0.5% TOWARD STORM SEWER INLETS.

PAVEMENT CROSS SLOPES SHALL BE 2%, TERRACES SHALL SLOPE AT A 4% GRADE TOWARD THE GUTTER, SHOULDERS SHALL HAVE A 4% CROSS SLOPE AND CROSS SLOPES FORMING DITCHES SHALL NOT EXCEED 4.00:1 UNLESS OTHERWISE INDICATED.

THE CROSS SLOPE OF SIDEWALKS AND BARRIER FREE SIDEWALK CURB RAMPS SHALL BE 2%. THE LONGITUDINAL GRADE OF BARRIER FREE SIDEWALK CURB RAMPS SHALL NOT EXCEED 8.33%. ALL SIDEWALK RAMPS SHALL BE CONSTRUCTED ACCORDING TO S.D.D. 3.03. AT ALL OTHER LOCATIONS THE LONGITUDINAL GRADE OF SIDEWALKS SHALL NOT EXCEED 5.0 % OR THE ADJACENT STREET GRADE WHICHEVER IS GREATER NOR BE LESS THAN 0.5% AND SHALL DRAIN TOWARD STORM SEWER INLETS. A 2 FOOT WIDE CONCRETE FLUME SHALL BE INSTALLED BETWEEN THE SIDEWALK AND THE BACK OF CURB AT SIDEWALK LOW POINTS WHICH CANNOT OTHERWISE BE DRAINED DIRECTLY TO THE GUTTER. SIDE SLOPES WITHIN TEN FEET OF A PUBLIC SIDEWALK SHALL NOT EXCEED 4.00:1. THE DESIGN OF SIDEWALK ELEVATIONS AND GRADES IS NOT INCLUDED IN THIS PLAN. ALL SIDEWALK AND SIDEWALK RAMP ELEVATIONS AND GRADES SHALL BE FIELD VERIFIED AND SET TO COMPLY WITH THE CITY OF MADISON STANDARD SPECIFICATIONS AND THE A.D.A. GUIDELINES.

OBTAIN A PRINT OUT OF THE ALIGNMENT FROM THE CITY ENGINEER PRIOR TO STAKING THIS PROJECT.

CURB STATION AND OFFSETS SHALL BE TO THE FACE OF CURB UNLESS OTHERWISE INDICATED. CURB ELEVATIONS SHALL BE TO THE TOP OF CURB (OR EXTENDED TOP OF CURB FOR DRIVEWAYS OR RAMPS) UNLESS OTHERWISE INDICATED.

POWER POLES AND OTHER OBSTRUCTIONS SHALL BE MOVED TO PROVIDE 2 FEET MINIMUM OF CLEAR DISTANCE FROM ANY FACE OF CURB OR EDGE OF SIDEWALK.

ANY INFORMATION SHOWN ON THIS PLAN, WHICH IS NOT PART OF THIS PROJECT, IS PRELIMINARY AND NOT FOR CONSTRUCTION.

THERE MAY BE EXISTING UTILITIES OR OTHER FEATURES WHICH ARE EITHER NOT SHOWN OR SHOWN INCORRECTLY ON THIS PLAN. IT IS THE RESPONSIBILITY OF THE DEVELOPER TO LOCATE AND IDENTIFY ALL UTILITIES AND TOPOGRAPHY WHICH MAY AFFECT THE CONSTRUCTION OF THESE IMPROVEMENTS.

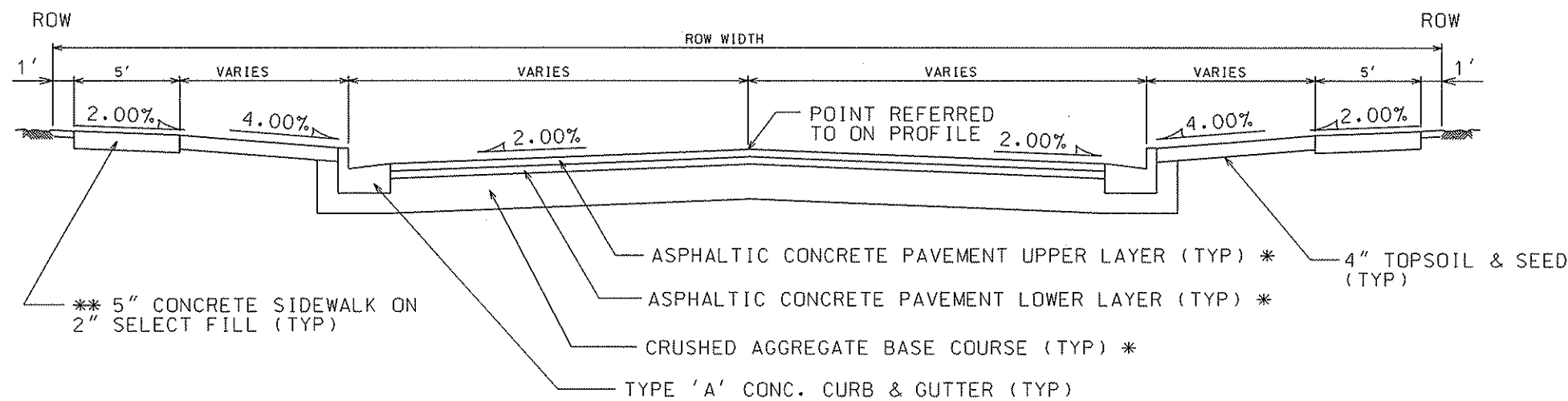
ALL PERMANENT SIGNING AND POSTING WILL BE DETERMINED AND PROVIDED BY THE TRAFFIC ENGINEERING DIVISION, FOLLOWING CONSTRUCTION OF THESE IMPROVEMENTS.

THE DEVELOPER SHALL PROVIDE, INSTALL AND MAINTAIN ALL STREET END BARRICADES, SIGNING AND TRAFFIC CONTROL, AS REQUIRED BY THE CITY TRAFFIC ENGINEER.

PAVEMENT SAWCUTS SHALL BE AS DIRECTED BY THE CITY CONSTRUCTION ENGINEER. SAWCUTS SHOWN ON THE PLAN ARE APPROXIMATE.

CURB ON CUL DE SACS SHALL BE INSTALLED ACCORDING TO SDD 3.05.

TYPICAL SECTION



NOTES:

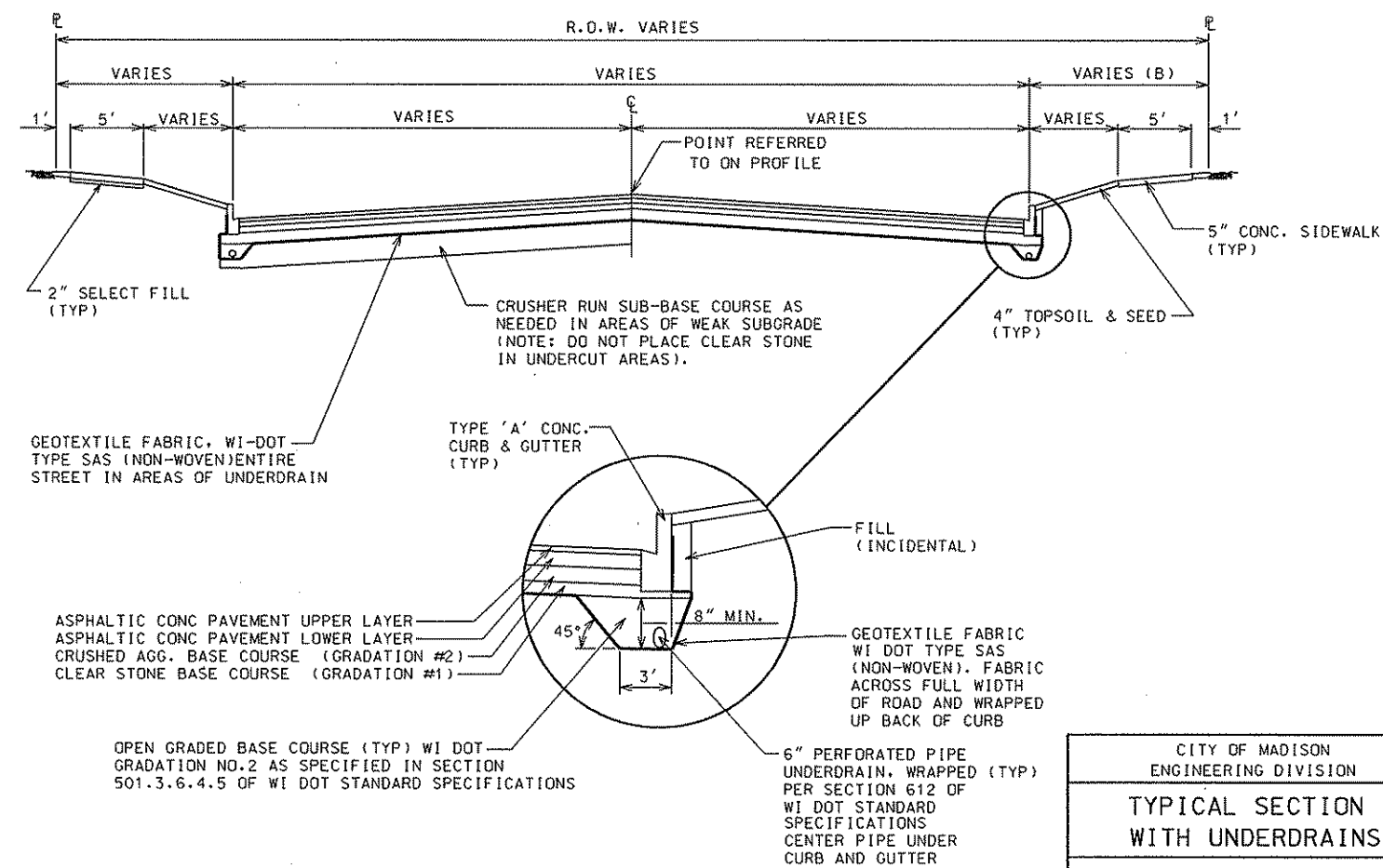
* A PAVEMENT DESIGN IN ACCORDANCE WITH STANDARD
DETAIL DRAWING 4.06 IS REQUIRED ON ALL PROJECTS

** 3" OF CRUSHED AGGREGATE BASE COURSE GRADATION 3
SHALL BE PLACED UNDER THE SIDEWALK WHERE THE
CENTERLINE GRADE OF THE STREET EXCEEDS 5%

* CITY OF MADISON MINIMUM PAVEMENT DESIGN

TYPE	CRUSHED AGGREGATE BASE COURSE		ASPHALTIC CONCRETE PAVEMENT			
	LOWER LAYER GRADATION 1	UPPER LAYER GRADATION 2	LOWER LAYER TYPE	THICKNESS	UPPER LAYER TYPE	THICKNESS
A	6"	4"	E-0.3	1.75"	E-0.3	1.75"
B	6"	4"	E-1	2.5"	E-1	1.75"
C	6"	4"	E-3	3.50"	E-3	1.75"

UNDERDRAIN INSTALLATION



CITY OF MADISON
ENGINEERING DIVISION

TYPICAL SECTION
WITH UNDERDRAINS

STANDARD DETAIL DRAWING 4.05

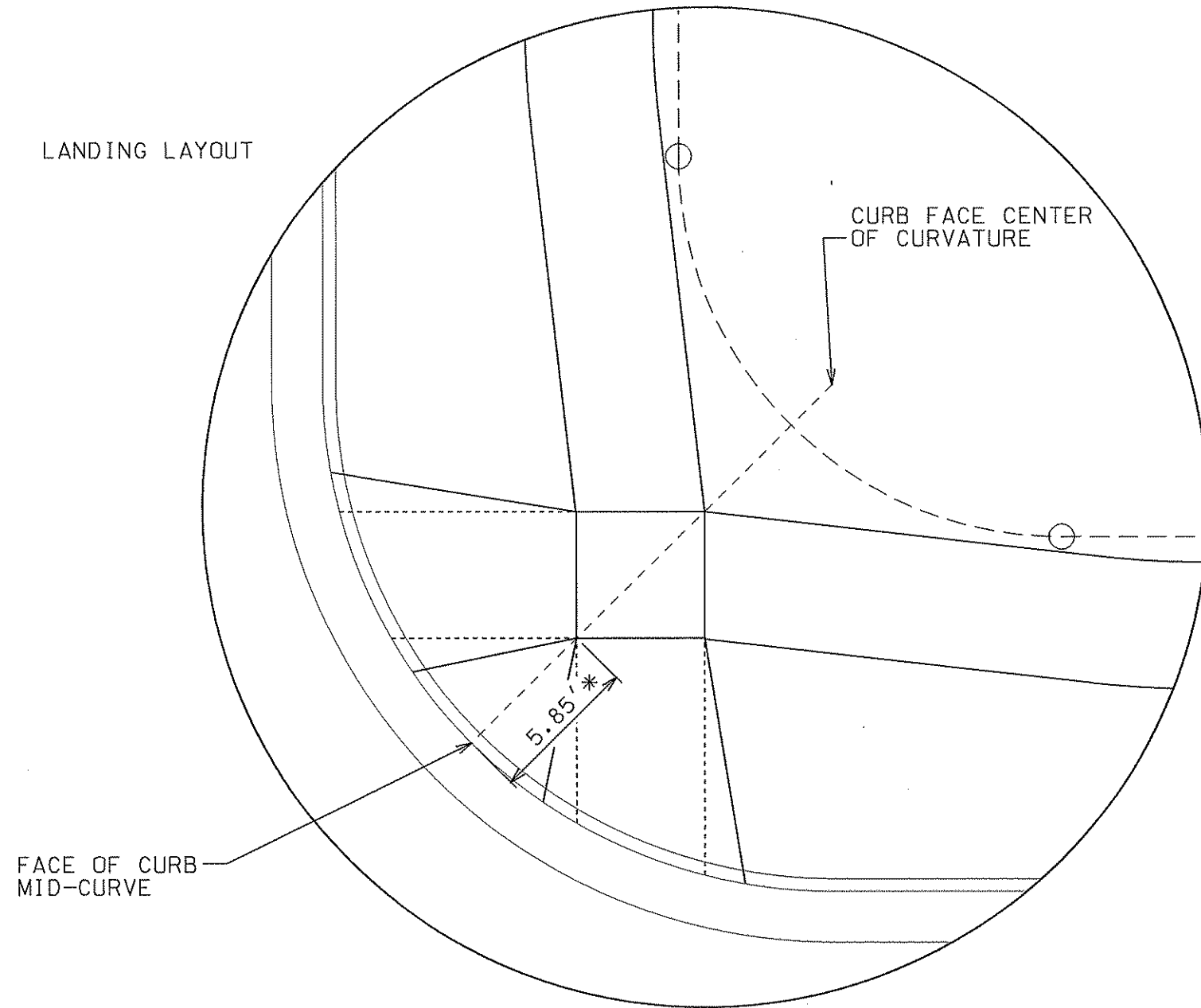
ORIGINATOR: CITY OF MADISON, SIBBICIS DIVISION

PLOT SCALE:
PLOT NAME:
REV. DATE:

ANY SIDEWALK ELEVATIONS INDICATED ON THE PLAN NEAR THE RAMPS ARE APPROXIMATE AND NOT TO BE USED FOR CONSTRUCTION. ACTUAL SIDEWALK AND RAMP ELEVATIONS SHALL BE DETERMINED BASED ON THE AS BUILT ELEVATIONS OF THE CURB AND GUTTER.

CONTACT THE CITY ENGINEER FOR A SITE SPECIFIC DESIGN IF THIS TYPICAL LAYOUT RESULTS IN ANY NON-COMPLIANCE WITH THE AMERICANS WITH DISABILITIES GUIDELINES OR ANY LOCAL, STATE OR NATIONAL REGULATIONS, CODES, GUIDLINES OR ORDINANCES.

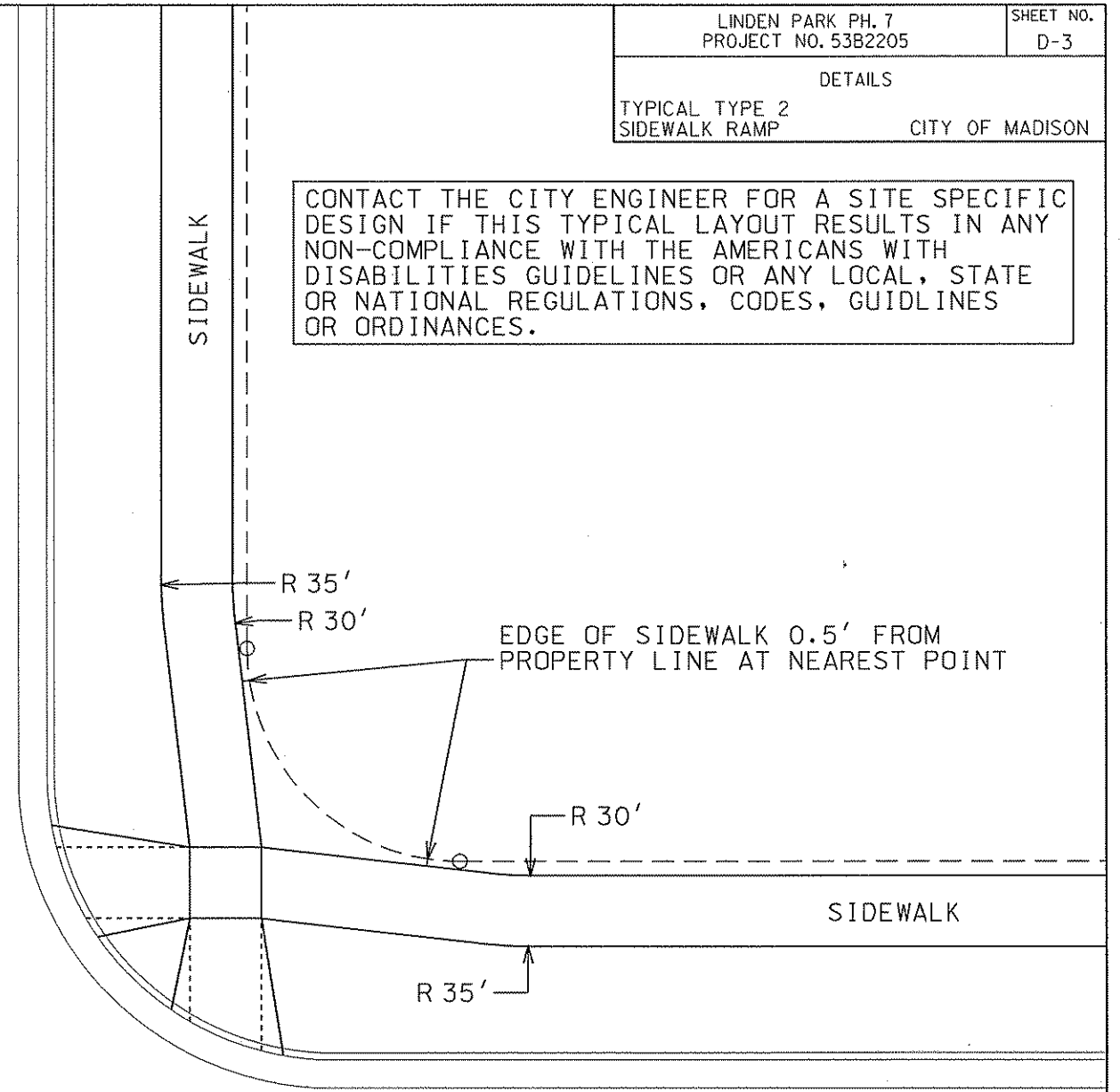
LANDING LAYOUT



FACE OF CURB
MID-CURVE

CURB FACE CENTER
OF CURVATURE

5.85' *



SIDEWALK

R 35'

R 30'

EDGE OF SIDEWALK 0.5' FROM
PROPERTY LINE AT NEAREST POINT

R 30'

SIDEWALK

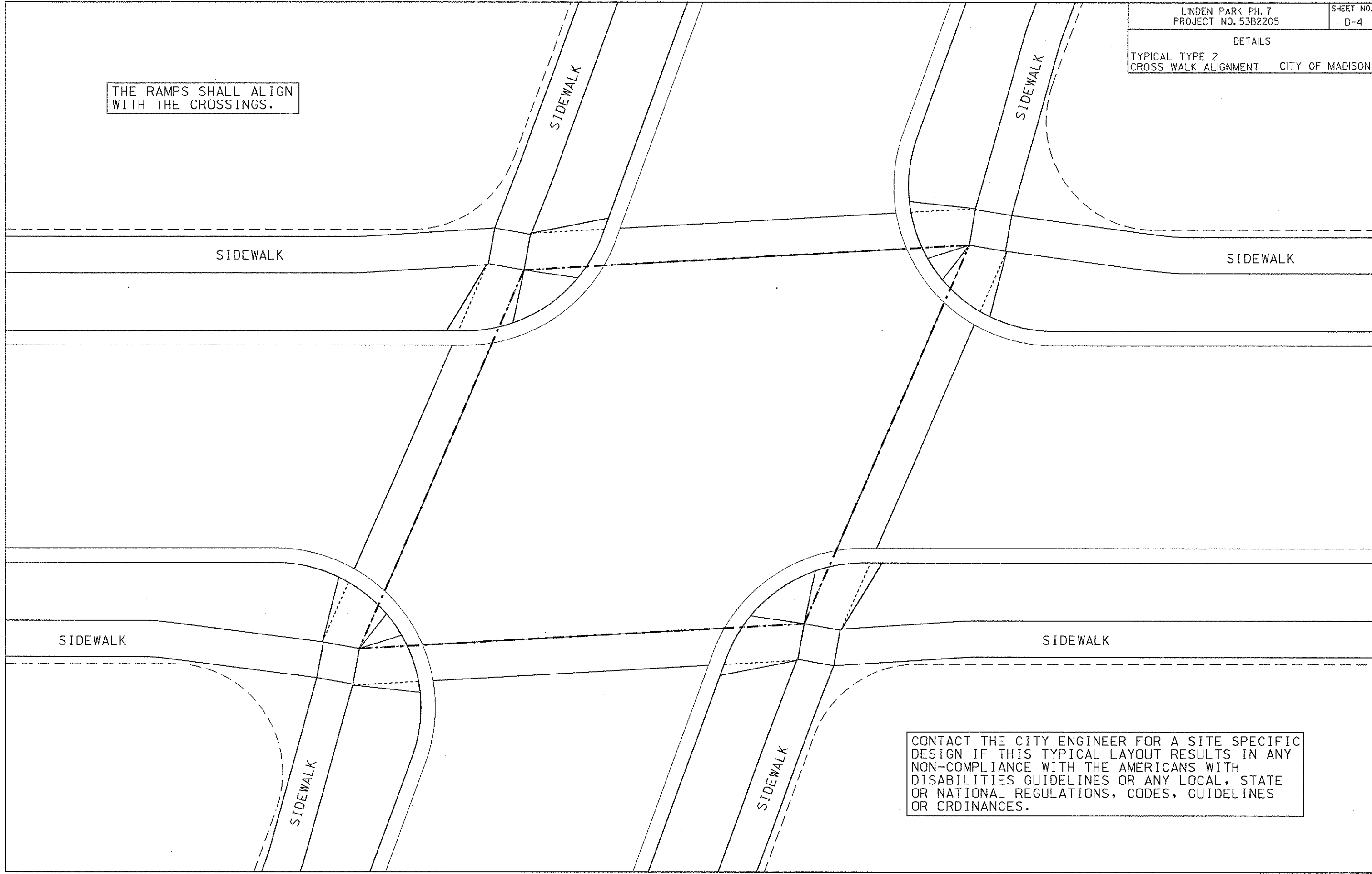
R 35'

* THE NEAR CORNER OF THE LANDING SHALL BE 5.85' FROM THE FACE OF CURB, UNLESS SPECIFIED OTHERWISE ON THE PLAN. BOTH OPPOSITE CORNERS OF THE LANDING SHALL BE LOCATED ON THE FACE OF CURB RADIUS LINE WHICH PASSES THROUGH THE MIDPOINT OF THE CURB CURVATURE.

LONGITUDINAL RAMP GRADES SHALL NOT EXCEED 1"/12" NOR BE LESS THAN 2.0% AT ANY POINT. THIS NOTE SHALL TAKE PRECEDENCE OVER ANY ELEVATION OR GRADE INDICATED ON THE PLAN.

SIDEWALK LONGITUDINAL GRADES AT ALL LOCATIONS OTHER THAN RAMPS AND WHERE STREET GRADES ARE MORE THAN 5.0% SHALL NOT EXCEED 5.0%. WHERE STREET GRADES EXCEED 5.0%, THE SIDEWALK LONGITUDINAL GRADE SHALL NOT EXCEED THE STREET GRADE.

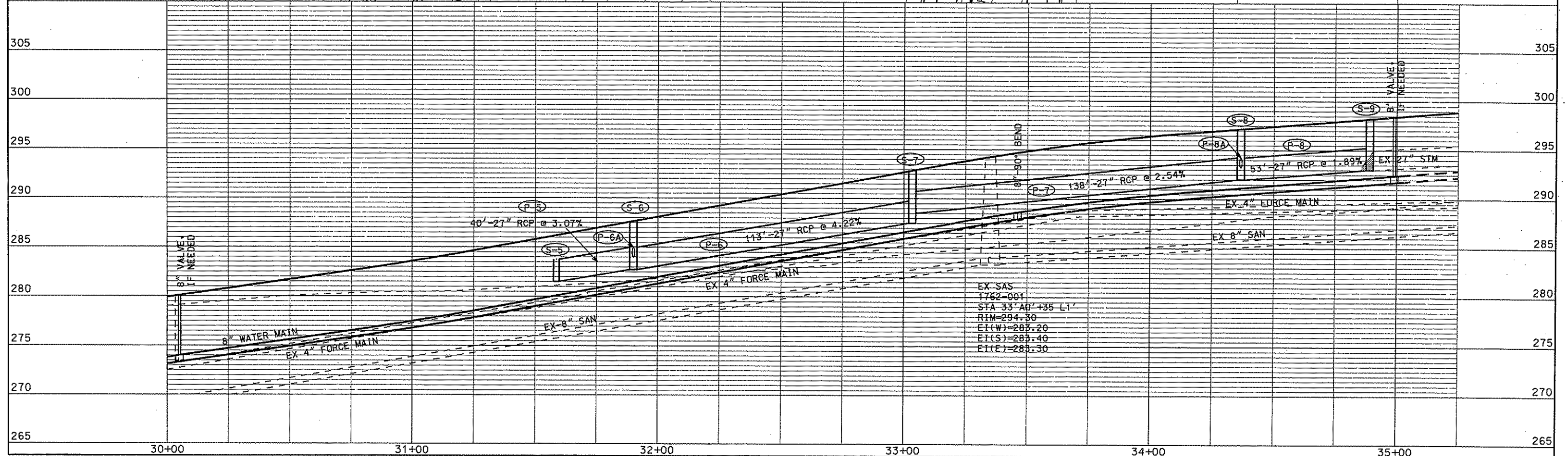
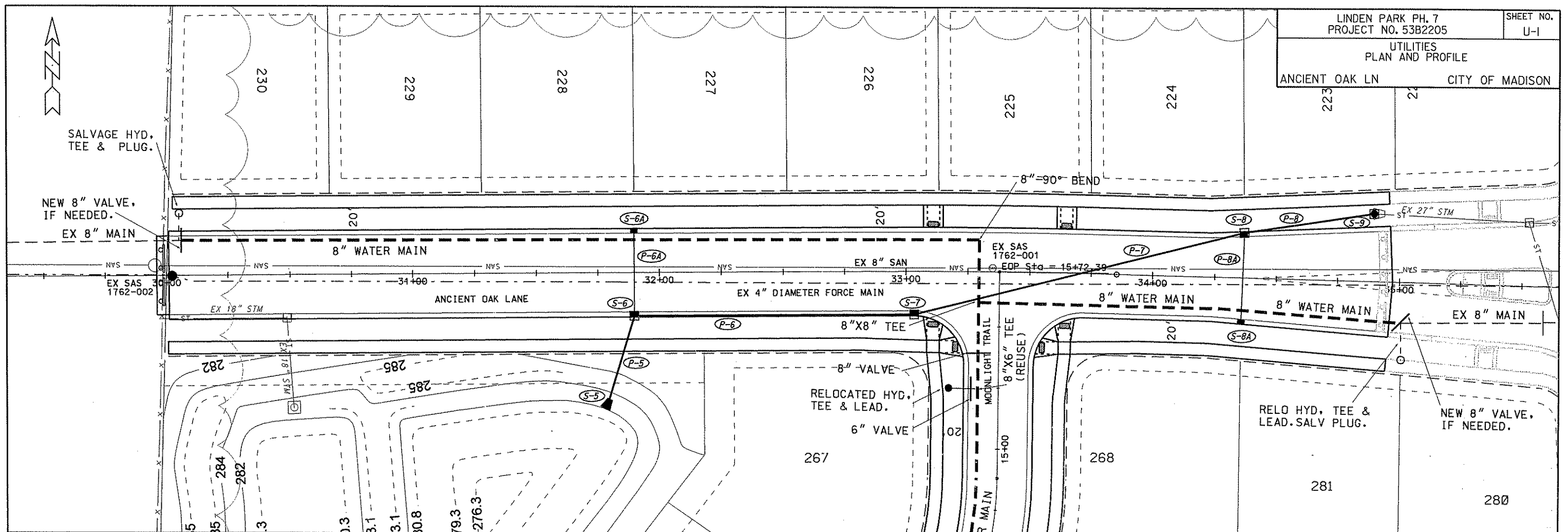
THE RAMPS SHALL ALIGN
WITH THE CROSSINGS.



CONTACT THE CITY ENGINEER FOR A SITE SPECIFIC
DESIGN IF THIS TYPICAL LAYOUT RESULTS IN ANY
NON-COMPLIANCE WITH THE AMERICANS WITH
DISABILITIES GUIDELINES OR ANY LOCAL, STATE
OR NATIONAL REGULATIONS, CODES, GUIDELINES
OR ORDINANCES.

ORIGINATOR: CITY OF MADISON, SIREEIS, DIVISION

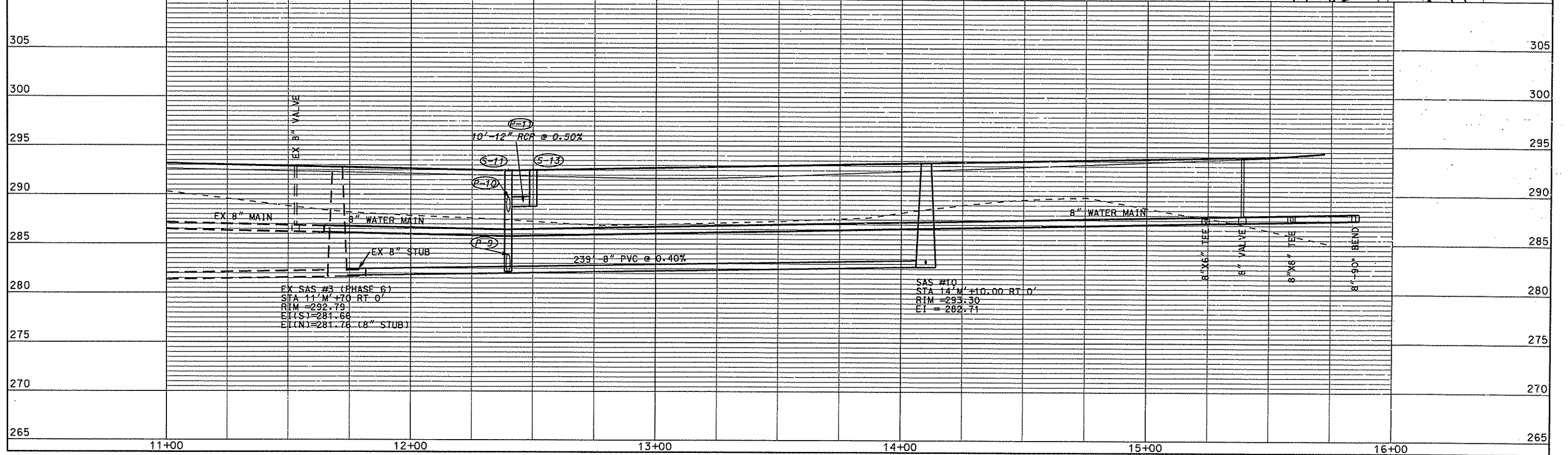
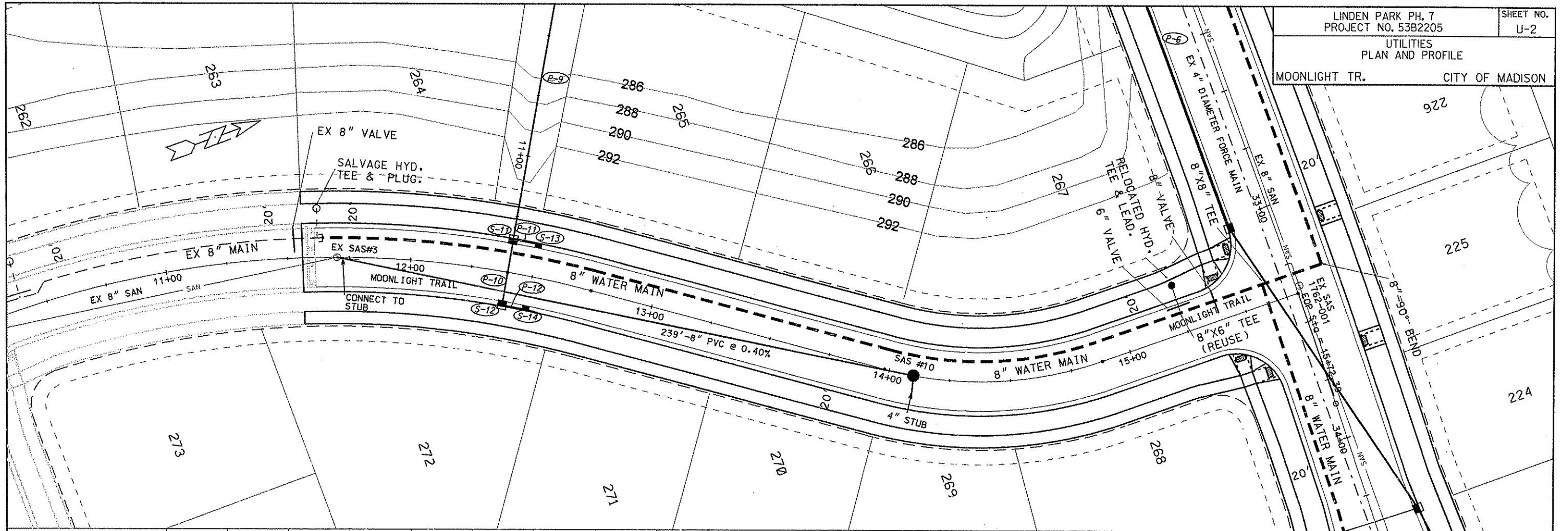
PLOT SCALE:
PLOT NAME:
REV. DATE:



EX SAS
1762-001
STA 33+00' ± 35 L1'
RIM=294.50
E(L)=283.20
E(S)=283.40
E(R)=283.30

ORIGINATOR: CITY OF MADISON, STREETS DIVISION

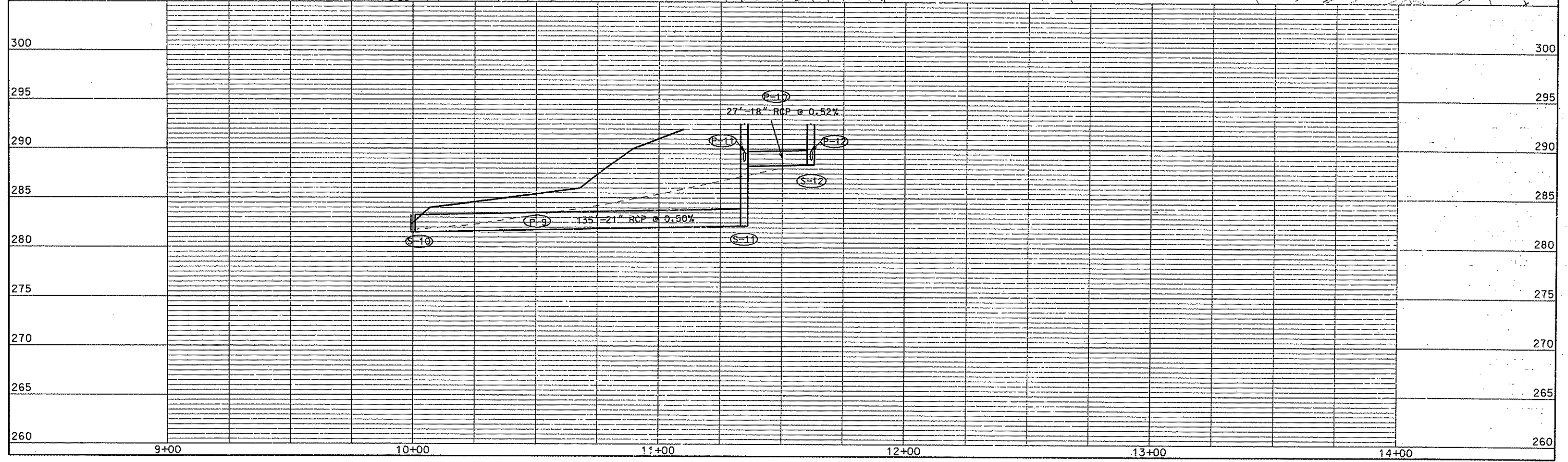
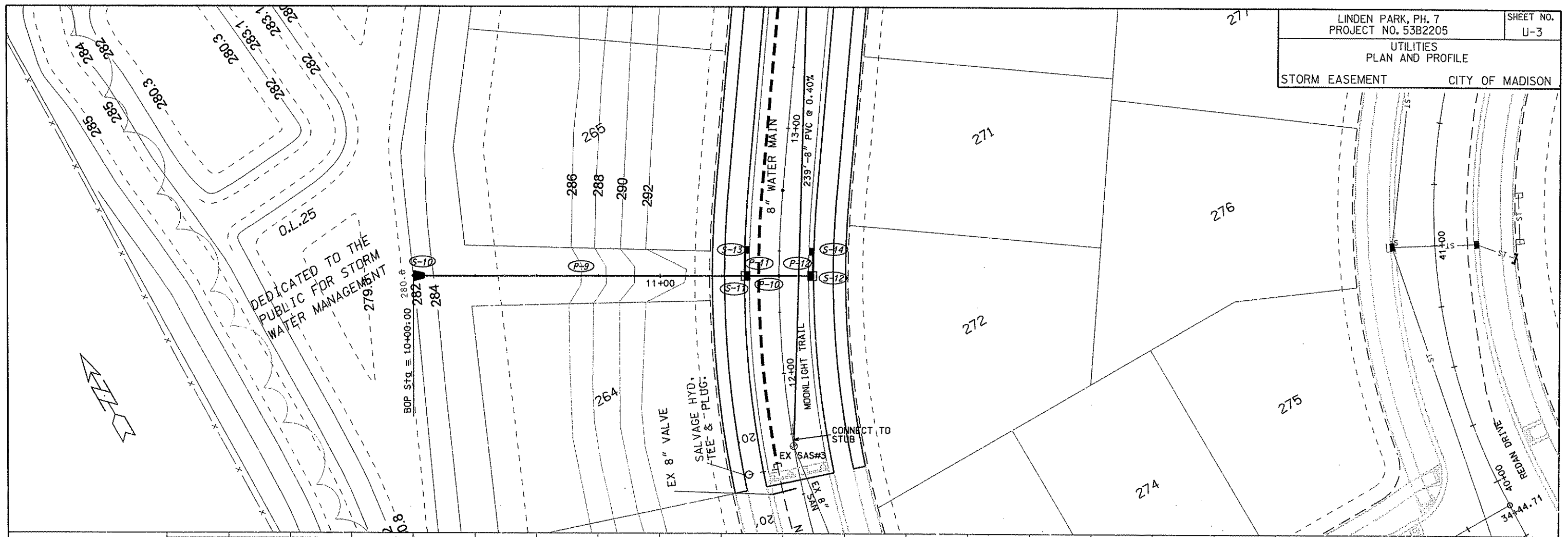
UTILITIES
PLAN AND PROFILE
MOONLIGHT TR. CITY OF MADISON



EX SAS #3 (PHASE 6)
STA 11+00 RT 0'
RIM = 292.79
E1(S) = 281.66
E1(N) = 281.78 (8" STUB)

SAS #10
STA 14+00 RT 0'
RIM = 293.30
E1 = 282.71

ORIGINATOR: CITY OF MADISON, STREETS DIVISION



ORIGINATOR: CITY OF MADISON, STREETS DIVISION

REV. DATE: PLOT NAME: PLOT SCALE:

STORM SEWER SCHEDULE

ALIGNMENT CODES:

"AO"=ANCIENT OAK LANE
 "MT"=MOONLIGHT TRAIL
 "E"=EASEMENT

LINDEN PARK PH. 7
 PROJECT NO. 53B2205

SHEET NO.
 U-4

STORM SEWER SCHEDULE CITY OF MADISON

STRUCTURES

STRUC. NO.	STATION	LOCATION (OFFSET)	TYPE	TOP OF CASTING	E.I.	DEPTH	NOTES
S-5	31'AO'+58.54	RT-51.98	27" RCP APRON END	-	281.50	-	W/ GATE
S-6	31'AO'+90.00	RT-17.50	3X3 SAS	287.69	282.73	4.96	W/ R-3067-7004-V
S-6A	31'AO'+90.00	LT-17.50	H INLET	287.69	284.62	3.07	W/ R-3067-7004-V
S-7	33'AO'+03.34	RT-17.50	3X3 SAS	292.91	287.50	5.41	W/ R-3067-7004-V
S-8	34'AO'+36.55	LT-18.36	3X3 SAS	297.20	292.00	5.20	W/ R-3067-7004-V
S-8A	34'AO'+36.11	RT-18.27	H INLET	297.20	293.43	3.77	W/ R-3067-7004-V
S-9	34'AO'+89.00	LT-27.56	3X3 SAS	298.28	293.00	5.28	W/ R-1550; NOTE 1
S-10	10'E'+00.00	CL	21" RCP APRON END	-	281.50	-	W/ GATE
S-11	12'MT'+39.80	LT-13.50	3X3 SAS	292.59	282.17	10.42	W/ R-3067-7004-V
S-12	12'MT'+39.80	RT-13.50	3X3 SAS	292.59	288.39	4.20	W/ R-3067-7004-V
S-13	12'MT'+50.00	LT-13.50	H INLET	292.63	288.80	3.83	W/ R-3067-7004-V
S-14	12'MT'+50.00	RT-13.50	H INLET	292.63	288.99	3.64	W/ R-3067-7004-V

PIPES

PIPE NO.	FROM (DNSTM)	TO (UPSTM)	LGTH (FT)	DISCH. E.I.	INLET E.I.	SLOPE (%)	PIPE SIZE	TYPE	NOTES
P-5	S-5	S-6	40	281.50	282.73	3.07%	27"	RCP	-
P-6	S-6	S-7	113	282.73	287.50	4.22%	27"	RCP	-
P-6A	S-6	S-6A	35	283.98	284.62	1.83%	12"	RCP	-
P-7	S-7	S-8	138	288.50	292.00	2.54%	27"	RCP	NCM
P-8	S-8	S-9	53	292.00	293.00	1.89%	27"	RCP	-
P-8A	S-8	S-8A	37	293.25	293.43	0.50%	12"	RCP	-
P-9	S-10	S-11	135	281.50	282.17	0.50%	21"	RCP	-
P-10	S-11	S-12	27	288.25	288.39	0.52%	18"	RCP	-
P-11	S-11	S-13	10	288.75	288.80	0.50%	12"	RCP	-
P-12	S-12	S-14	10	288.89	288.99	1.00%	12"	RCP	-

STANDARD NOTES:

- ABBREVIATIONS: AE = APRON ENDWALL; RCP = REINFORCED CONCRETE PIPE; HERCP = HORIZONTAL ELLIPTICAL REINFORCED CONCRETE PIPE; DNA = DOES NOT APPLY; SAS = SEWER ACCESS STRUCTURE; LP = LOW POINT INLET STRUCTURE; FP = FIELD POURED STRUCTURE; TR = TOP OF CONCRETE ROOF; NCM = NO CROWN MATCH FOR PIPES
- APPROXIMATE DISCHARGE E.I. GIVEN, ADJUST E.I. AND PIPE SLOPE IN THE FIELD.
- TOP OF CASTING GRADE GIVEN IS THE TOP OF CURB FOR INLET STRUCTURES AND THE FLOWLINE OF THE CLOSED CASTING FOR SAS's.
- TOP OF CONCRETE ROOF (TR) IS 1.25' BELOW TOP OF CASTING UNLESS OTHERWISE NOTED.
- ALL REINFORCED CONCRETE PIPES TO BE CLASS III UNLESS OTHERWISE NOTED.
- SURVEYOR TO CONFIRM THAT ALL INLET STATION / OFFSETS LINE UP WITH PROPOSED CURB AND GUTTER.
- ALL STRUCTURES CALLED OUT AS FIELD POURED SHALL BE FIELD POURED. ALL OTHER STRUCTURES (NOT INDICATED AS FIELD POURED) SHALL BE SUBMITTED TO CITY ENGINEERING FOR APPROVAL IF PRECAST STRUCTURES ARE PREFERRED. CONTACT ELIA E. ACOSTA OF CITY ENGINEERING AT (608) 266-4096 FOR PRECAST APPROVALS, OR FAX SHOP DRAWINGS TO (608)264-9275.

SPECIFIC NOTES

- (1) REMOVE & SALVAGE EX 27" APRON END

LINDEN PARK PH. 7 PROJECT NO. 53W2205	SHEET NO. U-5
PROJECT NO. 53B2205 WATER MATERIALS LIST	
WATER UTILITY	CITY OF MADISON
M-0860-II	S-0860-I2

WATER MATERIALS LIST

MATERIALS SUPPLIED BY THE CONTRACTOR

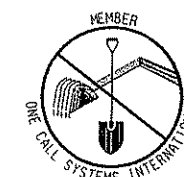
918' - 8" PIPE
 3 - 8" VALVES AND BOXES
 1 - 6" VALVE AND BOXE
 1 - 8"X8" TEE
 1 - 8"-90^ BEND
 1020' - POLY. WRAP

RELOCATED

12' - 6" PIPE
 1 - 8"X6" TEE
 1 - 5" HYDRANT

SALVAGE

2 - 8" M J PLUGS
 2 - 8"X6" TEE
 2 - 5" HYDRANTS



TO OBTAIN LOCATION OF
PARTICIPANTS' UNDERGROUND
FACILITIES BEFORE YOU
DIG IN WISCONSIN

CALL DIGGERS HOTLINE
 1-800-242-8511
TOLL FREE
 PAY-A-LOCATE 1-800-339-3880
 TDD (FOR HEARING IMPAIRED) 1-800-542-2289
 WIS. STATUTE 182.0175 (1974)
 REQUIRES MIN. OF 3 WORK DAYS
 NOTICE BEFORE YOU EXCAVATE.