

Madison, Wisconsin

CITY OF MADISON

CITY ENGINEERING DIVISION

DEPARTMENT OF PUBLIC WORKS

PLAN OF PROPOSED IMPROVEMENT

GORDON COMMONS - 717 W JOHNSON ST

CITY PROJECT NO. 53B2253
 CONTRACT NO. 2253

SANITARY SEWER ONLY

INDEX OF SHEETS

SHEET NO.	TITLE
1	DETAILS
D1-D2	STREET PLAN & PROFILES
P1-P3	UTILITY PLAN AND PROFILE
U1	

CONVENTIONAL SIGNS

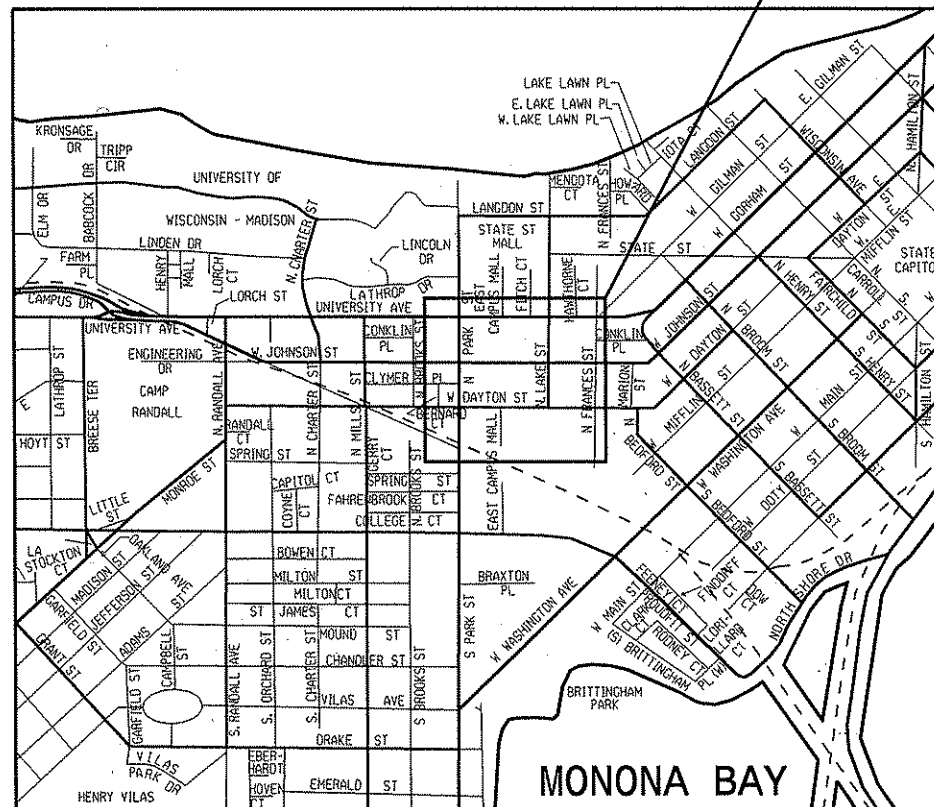
FIELD VERIFY ALL UTILITY LOCATIONS

GAS	— G —
STORM SEWER	— ST —
SANITARY SEWER	— SAN —
WATER	— W —
OVERHEAD ELECTRIC	— OH —
POWER POLE	⊡
ADA COMPLIANT RAMP W/ DETECTABLE WARNING FIELD	⊠
COMBUSTIBLE FLUIDS	☀

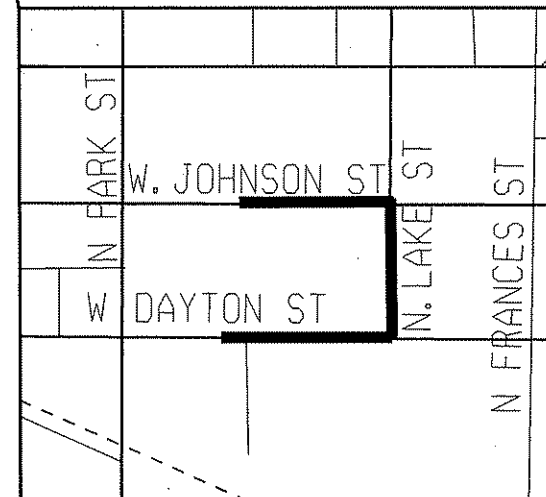
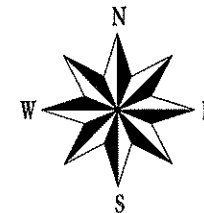
NOTES:

ALL GUTTERS SHALL DRAIN WITH A MINIMUM GRADE OF 0.50% TOWARD STORM SEWER INLETS.

SIDEWALK RAMPS AND CURB THRU SIDEWALK RAMPS SHALL HAVE A MAXIMUM SLOPE OF 1" PER 12". SIDEWALK AND CURB RAMPS SHALL BE CONSTRUCTED WITH A SIDE SLOPE OF 2.00%. SIDEWALK SHALL HAVE A MINIMUM LONGITUDINAL SLOPE OF 0.50% AND A MAXIMUM LONGITUDINAL SLOPE OF 5.00% EXCEPT WHERE STREET GRADES EXCEED 5.00%.



PROJECT LOCATION



PUBLIC IMPROVEMENT PROJECT APPROVED

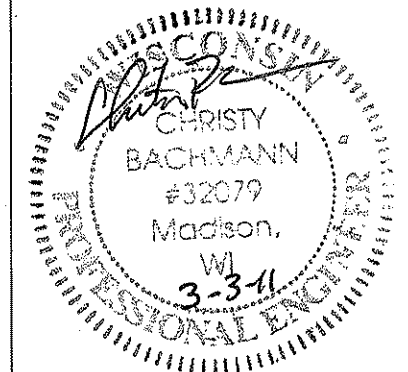
OCTOBER 5, 2010

BY THE COMMON COUNCIL
 OF MADISON, WISCONSIN

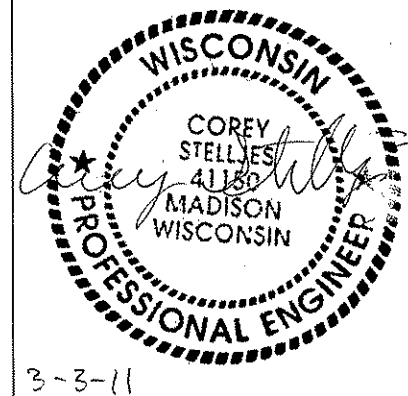
PUBLIC IMPROVEMENT DESIGN
 APPROVED BY:

[Signature]
 City Engineer
 3/3/11
 Date

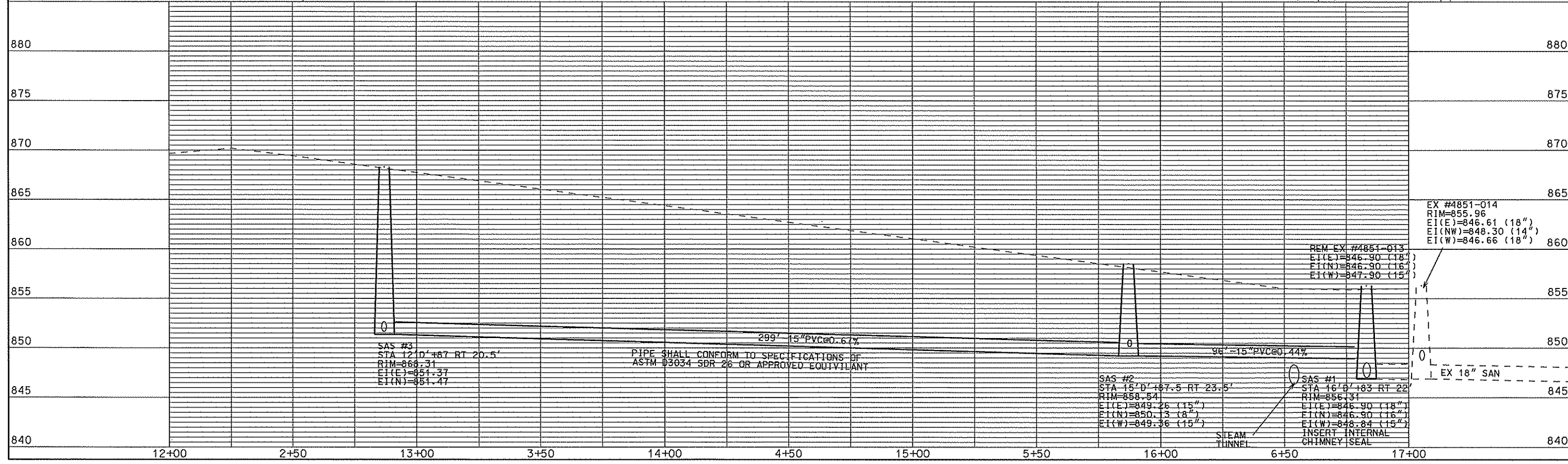
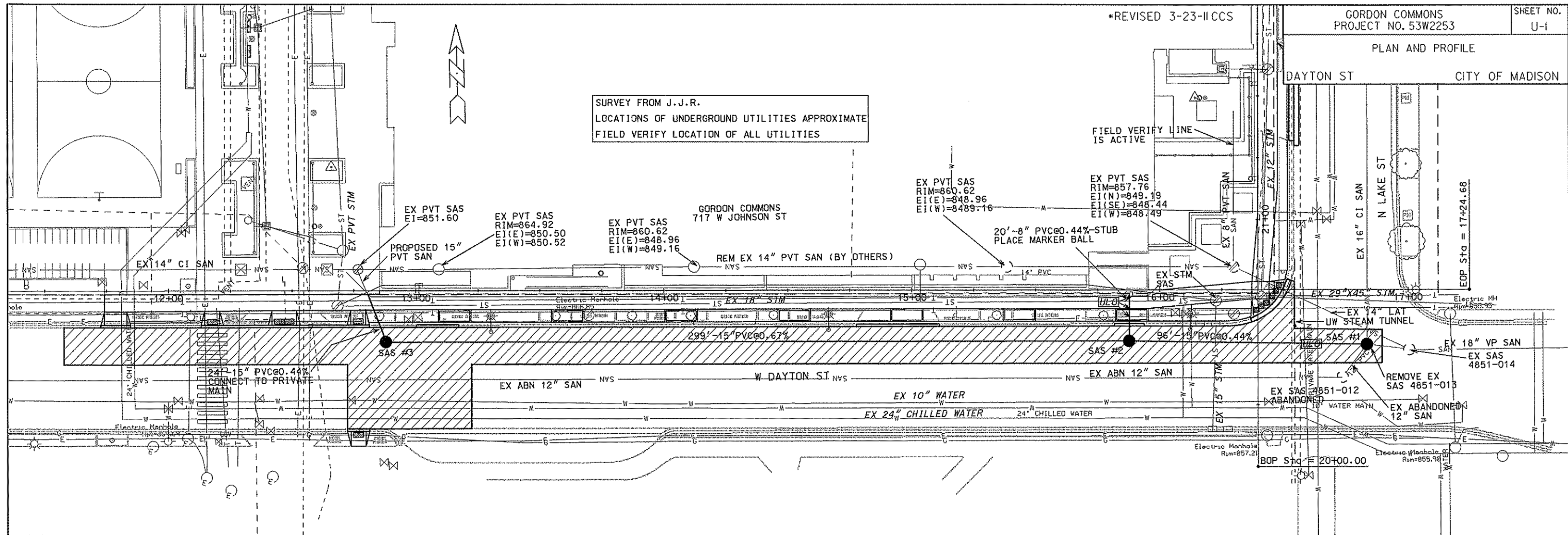
STREET
 DESIGNED BY:



SANITARY
 DESIGNED BY:



SURVEY FROM J.J.R.
LOCATIONS OF UNDERGROUND UTILITIES APPROXIMATE
FIELD VERIFY LOCATION OF ALL UTILITIES



SAS #3
STA 12'D +87 RT 20.5'
RIM=866.31
EI(E)=851.37
EI(N)=851.47

PIPE SHALL CONFORM TO SPECIFICATIONS OF
ASTM D3034 SDR 26 OR APPROVED EQUIVILANT

SAS #2
STA 15'D +87.5 RT 23.5'
RIM=858.54
EI(E)=849.26 (15")
EI(N)=850.13 (8")
EI(W)=849.36 (15")

SAS #1
STA 16'D +83 RT 22'
RIM=856.31
EI(E)=846.90 (18")
EI(N)=846.90 (16")
EI(W)=848.84 (15")
INSERT INTERNAL
CHIMNEY SEAL

EX #4851-014
RIM=855.96
EI(E)=846.61 (18")
EI(NW)=848.30 (14")
EI(W)=846.66 (18")

REM EX #4851-013
EI(E)=846.90 (18")
EI(N)=846.90 (16")
EI(W)=847.90 (15")

ORIGINATOR: CITY OF MADISON, STREETS DIVISION