



Madison, Wisconsin

CITY OF MADISON

CITY ENGINEERING DIVISION

DEPARTMENT OF PUBLIC WORKS

PLAN OF PROPOSED IMPROVEMENT

3502 MONROE STREET – PARMAN PLACE

CITY PROJECT NO. 53B2288
 CONTRACT NO. 2288

INDEX OF SHEETS

SHEET NO. 1	TITLE
SHEET NO. D1-D2	DETAILS
SHEET NO. P1	STREET PLAN
SHEET NO. G1	GRADING PLAN
SHEET NO. U1	UTILITY PLAN
SHEET NO. L1.1-L1.4	LANDSCAPING PLANS

PUBLIC IMPROVEMENT PROJECT APPROVED
 SEPTEMBER 20, 2011

BY THE COMMON COUNCIL
 OF MADISON, WISCONSIN

PUBLIC IMPROVEMENT DESIGN
 APPROVED BY:

[Signature] 11/16/11
 City Engineer Date

STREET
 DESIGNED BY:

[Circular Seal: WISCONSIN PROFESSIONAL ENGINEER]
 CHRISTY BACHMANN
 #32079
 Madison, WI
[Signature] 11-16-11

STORM & SANITARY SEWER
 DESIGNED BY:

[Circular Seal: WISCONSIN PROFESSIONAL ENGINEER]
 GREGORY J. EYES
 #30026
 Madison, WI
[Signature] 11/16/11

CONVENTIONAL SIGNS

FIELD VERIFY ALL UTILITY LOCATIONS

GAS — G —

STORM SEWER — ST —

SANITARY SEWER — SAN —

WATER — W —

OVERHEAD ELECTRIC — OH —

POWER POLE □

ADA COMPLIANT RAMP W/
 DETECTABLE WARNING FIELD *[Symbol]*

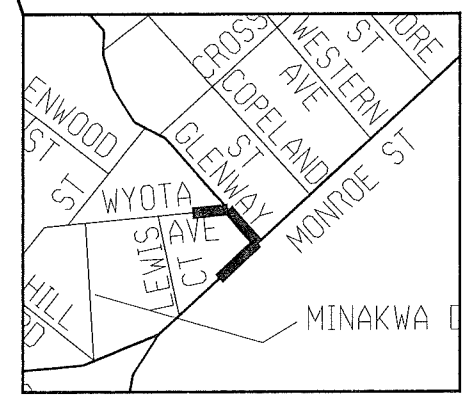
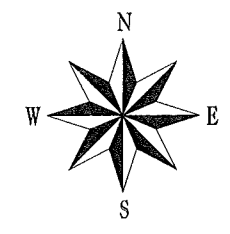
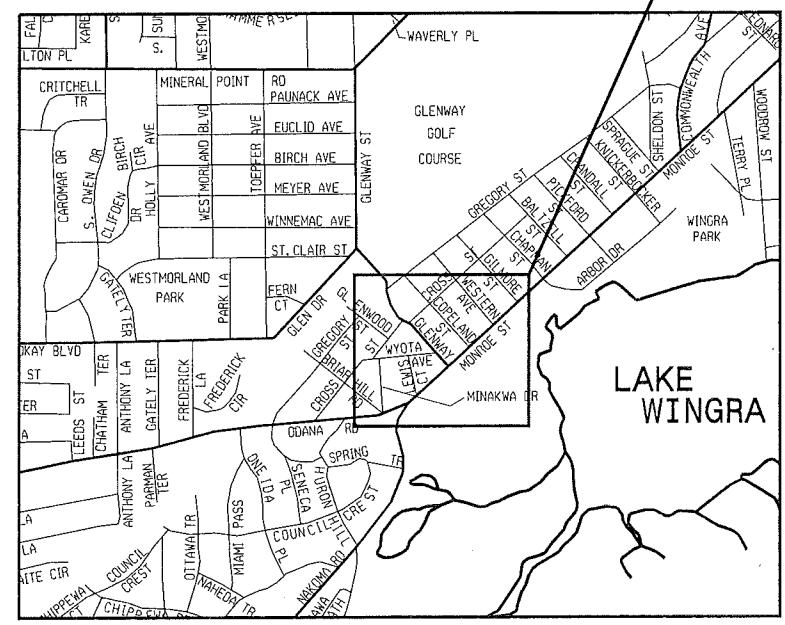
COMBUSTIBLE FLUIDS *[Symbol]*

NOTES:

ALL GUTTERS SHALL DRAIN WITH A MINIMUM GRADE OF 0.50% TOWARD STORM SEWER INLETS.

SIDEWALK RAMPS AND CURB THRU SIDEWALK RAMPS SHALL HAVE A MAXIMUM SLOPE OF 1" PER 12". SIDEWALK AND CURB RAMPS SHALL BE CONSTRUCTED WITH A SIDE SLOPE OF 2.00%. SIDEWALK SHALL HAVE A MINIMUM LONGITUDINAL SLOPE OF 0.50% AND A MAXIMUM LONGITUDINAL SLOPE OF 5.00% EXCEPT WHERE STREET GRADES EXCEED 5.00%.

PROJECT LOCATION



THE LOCATION AND INFORMATION FOR PROPOSED NEW TREES, IN THE PUBLIC RIGHT OF WAY OR ON PUBLIC LANDS ARE APPROXIMATE AND ARE SHOWN FOR REFERENCE ONLY. THE LOCATIONS, SPECIFICATIONS AND PLANTING METHODS OF ALL PROPOSED NEW OR REPLACEMENT TREES IN THE PUBLIC RIGHT OF WAY OR ON PUBLIC LANDS SHALL BE APPROVED BY THE CITY FORESTER PRIOR TO INSTALLATION.

NO TREES IN THE RIGHT OF WAY OR ON PUBLIC LANDS SHALL BE TRIMMED, PRUNED, REMOVED OR ADVERSELY AFFECTED IN ANY WAY UNTIL THE DEVELOPER HAS RECEIVED WRITTEN PERMISSION FROM THE CITY ENGINEER OR CITY FORESTER. SAID WRITTEN PERMISSION SHALL INCLUDE LANGUAGE INDICATING THAT SECTION 10.101 OF THE MADISON GENERAL ORDINANCES AND ADMINISTRATIVE PROCEDURE MEMORANDUM NO. 6-2, REFERRING TO NOTIFICATION OF PROPERTY OCCUPANTS AND/OR OWNERS, HAS BEEN COMPLIED WITH.

THE DEVELOPER/CONTRACTOR SHALL SUBMIT A TRAFFIC CONTROL PLAN FOR REVIEW TO CITY TRAFFIC ENGINEERING AT LEAST 10 WORKING DAYS PRIOR TO WORK BEGINNING WITHIN MONROE ST. WORK SHALL NOT PROCEED UNTIL THE TRAFFIC CONTROL PLAN HAS BEEN APPROVED. THE TRAFFIC CONTROL PLAN MAY INCLUDE BUT IS NOT LIMITED TO: LANE CLOSURE RESTRICTIONS, PEAK HOUR WORKING RESTRICTIONS, ACCESS REQUIREMENTS, ETC. THE DEVELOPER/CONTRACTOR SHALL BE RESPONSIBLE FOR PHASING WORK AS NECESSARY TO MEET THE REQUIREMENTS OF THE APPROVED TRAFFIC CONTROL PLAN.

ALL PAVEMENT IN THE MONROE ST. RIGHT OF WAY SHALL BE TYPE "C" . ALL PAVEMENT IN THE GLENWAY ST RIGHT OF WAY SHALL BE TYPE "B" AND ALL PAVEMENT IN WYOTA AVE RIGHT OF WAY SHALL BE TYPE "A".

ALL ISLANDS SHALL HAVE TYPE "H" C & G PER S.D.D. 3.08 AND MOUNTABLE NOSES PER S.D.D. 3.13. ALL OTHER C & G SHALL BE TYPE "A" PER S.D.D. 3.06 UNLESS OTHERWISE NOTED.

ISLAND INTERIORS SHALL BE OF SOD WHERE THE BACK TO BACK OF CURB DIMENSION IS GREATER THAN 6'.

UNDERDRAINS SHALL BE INSTALLED, PER STANDARD DETAIL DRAWING 4.05 FOR 75' ON EACH SIDE OF THE LOW POINT, OR TO THE NEAREST CURB HIGH POINT. ALL UNDERDRAIN SHALL BE WRAPPED.

ALL GUTTERS SHALL DRAIN WITH A MINIMUM GRADES OF 0.5% TOWARD STORM SEWER INLETS.

PAVEMENT CROSS SLOPES SHALL BE 2%, TERRACES SHALL SLOPE AT A 4% GRADE TOWARD THE GUTTER, SHOULDERS SHALL HAVE A 4% CROSS SLOPE AND CROSS SLOPES FORMING DITCHES SHALL NOT EXCEED 4.00:1 UNLESS OTHERWISE INDICATED.

THE CROSS SLOPE OF SIDEWALKS AND BARRIER FREE SIDEWALK CURB RAMPS SHALL BE 2%. THE LONGITUDINAL GRADE OF BARRIER FREE SIDEWALK CURB RAMPS SHALL NOT EXCEED 8.33%. ALL SIDEWALK RAMPS SHALL BE CONSTRUCTED ACCORDING TO S.D.D. 3.03. AT ALL OTHER LOCATIONS THE LONGITUDINAL GRADE OF SIDEWALKS SHALL NOT EXCEED 5.0 % OR THE ADJACENT STREET GRADE WHICHEVER IS GREATER NOR BE LESS THAN 0.5% AND SHALL DRAIN TOWARD STORM SEWER INLETS. A 2 FOOT WIDE CONCRETE FLUME SHALL BE INSTALLED BETWEEN THE SIDEWALK AND THE BACK OF CURB AT SIDEWALK LOW POINTS WHICH CANNOT OTHERWISE BE DRAINED DIRECTLY TO THE GUTTER. SIDE SLOPES WITHIN TEN FEET OF A PUBLIC SIDEWALK SHALL NOT EXCEED 4.00:1. ALL SIDEWALK AND SIDEWALK RAMP ELEVATIONS AND GRADES SHALL BE FIELD VERIFIED AND SET TO COMPLY WITH THE CITY OF MADISON STANDARD SPECIFICATIONS AND THE A.D.A. GUIDELINES.

OBTAIN A PRINT OUT OF THE ALIGNMENT FROM THE CITY ENGINEER PRIOR TO STAKING THIS PROJECT.

CURB STATION AND OFFSETS SHALL BE TO THE FACE OF CURB UNLESS OTHERWISE INDICATED. CURB ELEVATIONS SHALL BE TO THE TOP OF CURB (OR EXTENDED TOP OF CURB FOR DRIVEWAYS OR RAMPS) UNLESS OTHERWISE INDICATED.

POWER POLES AND OTHER OBSTRUCTIONS SHALL BE MOVED TO PROVIDE 2 FEET MINIMUM OF CLEAR DISTANCE FROM ANY FACE OF CURB OR EDGE OF SIDEWALK.

ANY INFORMATION SHOWN ON THIS PLAN, WHICH IS NOT PART OF THIS PROJECT, IS PRELIMINARY AND NOT FOR CONSTRUCTION.

THERE MAY BE EXISTING UTILITIES OR OTHER FEATURES WHICH ARE EITHER NOT SHOWN OR SHOWN INCORRECTLY ON THIS PLAN. IT IS THE RESPONSIBILITY OF THE DEVELOPER TO LOCATE AND IDENTIFY ALL UTILITIES AND TOPOGRAPHY WHICH MAY AFFECT THE CONSTRUCTION OF THESE IMPROVEMENTS.

ALL PERMANENT SIGNING AND POSTING WILL BE DETERMINED AND PROVIDED BY THE TRAFFIC ENGINEERING DIVISION, FOLLOWING CONSTRUCTION OF THESE IMPROVEMENTS.

THE DEVELOPER SHALL PROVIDE, INSTALL AND MAINTAIN ALL STREET END BARRICADES, SIGNING AND TRAFFIC CONTROL, AS REQUIRED BY THE CITY TRAFFIC ENGINEER.

PAVEMENT SAWCUTS SHALL BE AS DIRECTED BY THE CITY CONSTRUCTION ENGINEER. SAWCUTS SHOWN ON THE PLAN ARE APPROXIMATE.

CURB ON CUL DE SACS SHALL BE INSTALLED ACCORDING TO SDD 3.05.

PLOT SCALE:

PLOT NAME:

REV. DATE:

ORIGINATOR: CITY OF MADISON, STREETS DIVISION

- ① BITUMINOUS PVMT UPPER LAYER, IF NECESSARY, SEE SHEET D-1
- ② BITUMINOUS PVMT LOWER LAYER, IF NECESSARY, SEE SHEET D-1
- ③ 4" GRADATION 2 CRUSHED STONE (EXISTING)
- ④ 6" GRADATION 1 CRUSHED STONE (EXISTING)
- ⑤ TYPE 'A' CURB (TYPICAL)
- ⑥ LANDSCAPED TERRACE, SEE SHEETS L1.1-1.4
- ⑦ 5" CONCRETE SIDEWALK
- ⑧ EXISTING ROADWAY

Pavement Patching Criteria

Criteria use on:

- Streets with pavement rating > 6
- Arterial Streets

1. Length of Patch

- a. Minimum 50 feet long
- b. Minimum of 15 feet beyond the excavation
- c. Where multiple patches are created and the separation between them is less than 100 feet, the patches shall be combined into a single patch.
- d. The patches shall be adjusted in the field to meet special conditions such as previous paving or patching limits.

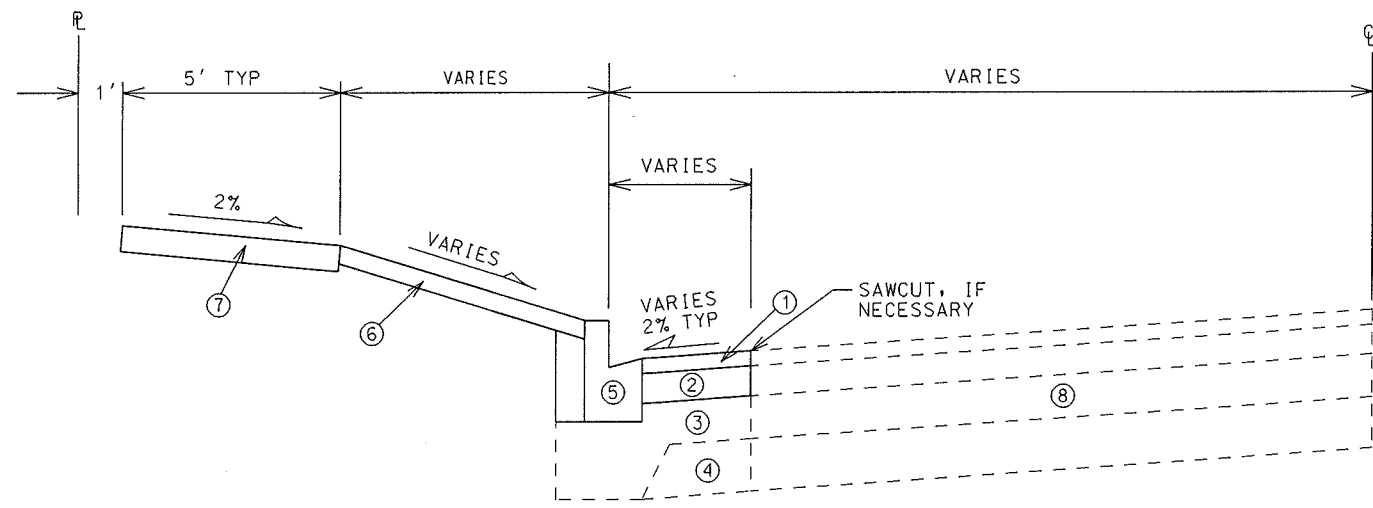
2. Width of Patch (all dimensions are curb face to curb face)

a. All Streets Except Divided or one way roadways

- i. Street Width 0 to 24 feet wide - Patch entire street width
- ii. Street Width 25 to 37 feet wide - Patch one half the street width (curb to centerline of roadway). Note - Utility Engineer may adjust paving limit to correspond with a painted centerline in situations where the painted centerline is not in the center of the street.
- iii. Street Width 38 feet and up - Patch width of entire lane for each lane which was disturbed by the excavation.
 - 1. If the lane is adjacent to a bike lane, include the bike lane. (except when there is a parking lane between the bike lane and the curb)
 - 2. If the lane is a bike lane and adjacent to a parking lane, include the parking lane.
 - 3. If the lane is a bike lane and not adjacent to a parking lane, include the adjacent travel lane.

b. Divided Roadways and One Way Streets

- i. Street 0 to 19 feet wide - Patch entire street width
- ii. Street Width 20 feet and up - Patch width of entire lane for each lane which was disturbed by the excavation.
 - 1. If the lane is adjacent to a bike lane, include the bike lane. (except when there is a parking lane between the bike lane and the curb)
 - 2. If the lane is a bike lane and adjacent to a parking lane, include the parking lane.
 - 3. If the lane is a bike lane and not adjacent to a parking lane, include the adjacent travel lane.



TYPICAL TERRACE SECTION
 MONROE STREET, GLENWAY STREET, WYOTA AVENUE

- NOTES:**
- 1. A PAVEMENT DESIGN IN ACCORDANCE WITH STANDARD DETAIL DRAWING 4.06 IS REQUIRED ON ALL PROJECTS
 - 2. 3" OF CRUSHED AGGREGATE BASE COURSE GRADATION 3 SHALL BE PLACED UNDER THE SIDEWALK WHERE THE GRADE EXCEEDS 5%.
 - 3. SAWCUT AND PATCHING LIMITS ARE TO BE VERIFIED IN THE FIELD BY THE CITY CONSTRUCTION ENGINEER

CITY OF MADISON MINIMUM PAVEMENT DESIGN

TYPE	CRUSHED AGGREGATE BASE COURSE		ASPHALTIC CONCRETE PAVEMENT			
	LOWER LAYER GRADATION 1	UPPER LAYER GRADATION 2	LOWER LAYER		UPPER LAYER	
			TYPE	THICKNESS	TYPE	THICKNESS
A	6"	4"	E-0.3	1.75"	E-0.3	1.75"
B	6"	4"	E-1	2.50"	E-1	1.75"
C	6"	4"	E-3	3.50"	E-3	1.75"

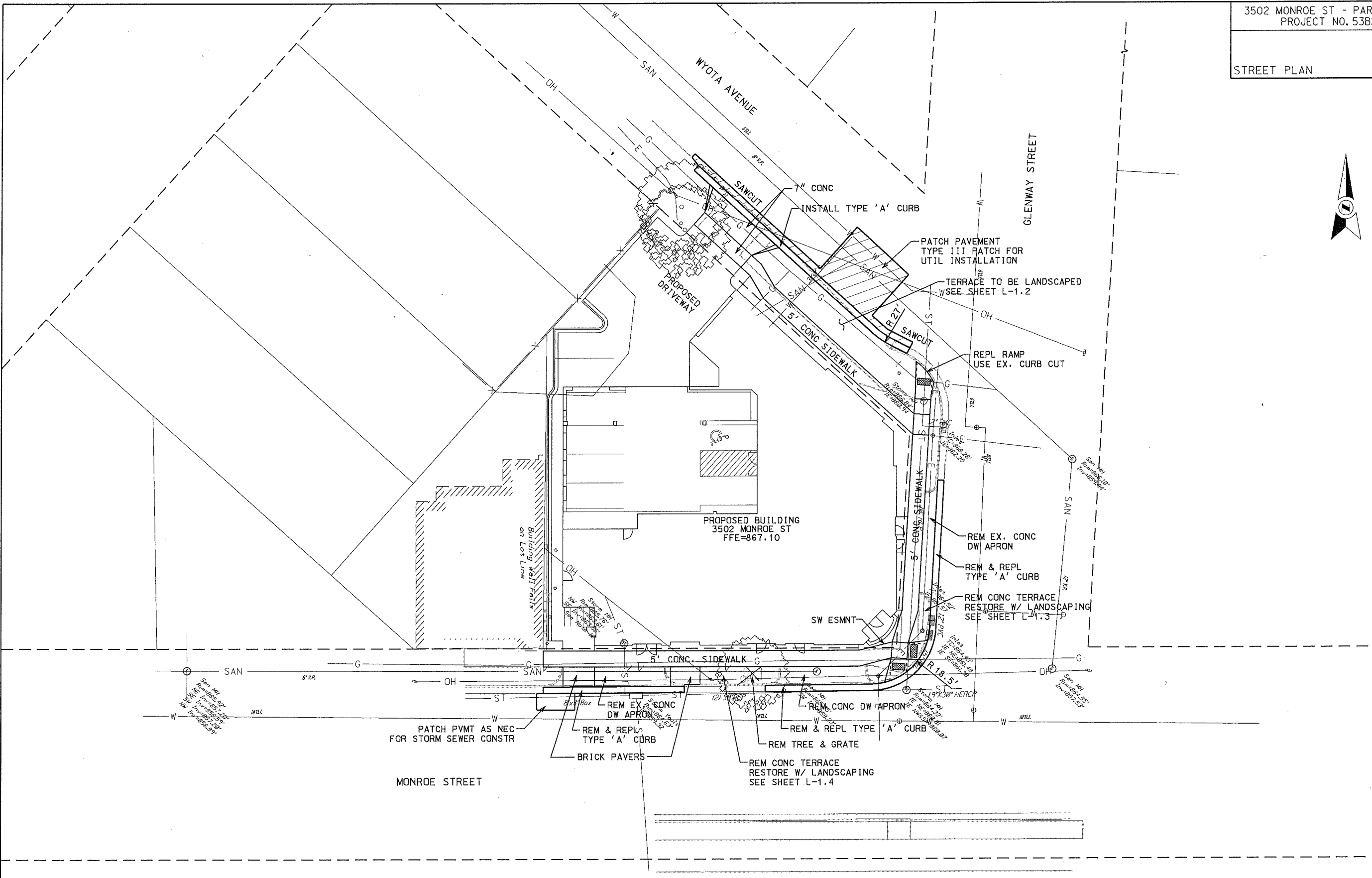
STREET RATINGS

STREET NAME	CLASSIFICATION	PAVEMENT RATING
MONROE ST*	ARTERIAL	5
GLENWAY ST	COLLECTOR	6
WYOTA AVE	LOCAL	5

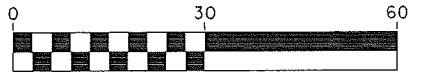
* MONROE ST SCHEDULED TO BE RESURFACED IN 2014

ORIGINATOR: CITY OF MADISON, STREETS DIVISION

PLOT SCALE: PLOT NAME: REV. DATE:

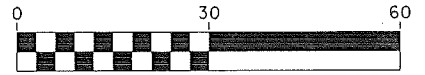
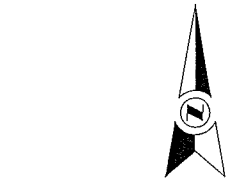
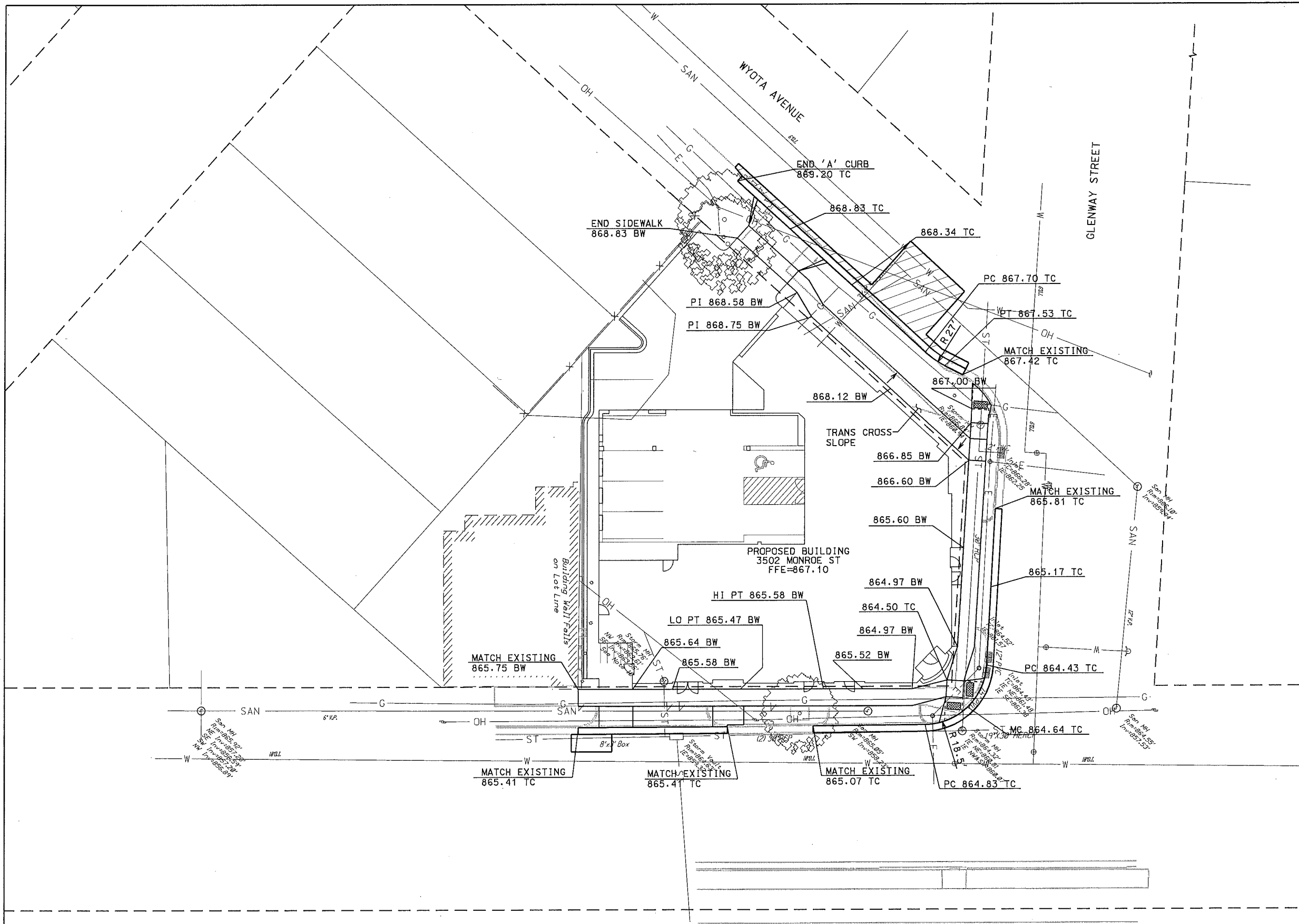


NOTE: WHEN CONSTRUCTING CURB AND GUTTER ON MONROE ST. & GLENWAY ST., TAKE CARE TO NOT DAMAGE PAVEMENT EDGE. IF NECESSARY, SAWCUT 2' INTO PAVEMENT, FORM & POUR CURB, AND FRONT FILL & PAVE SAWCUT AREA AS DIRECTED BY THE CITY CONSTRUCTION ENGINEER



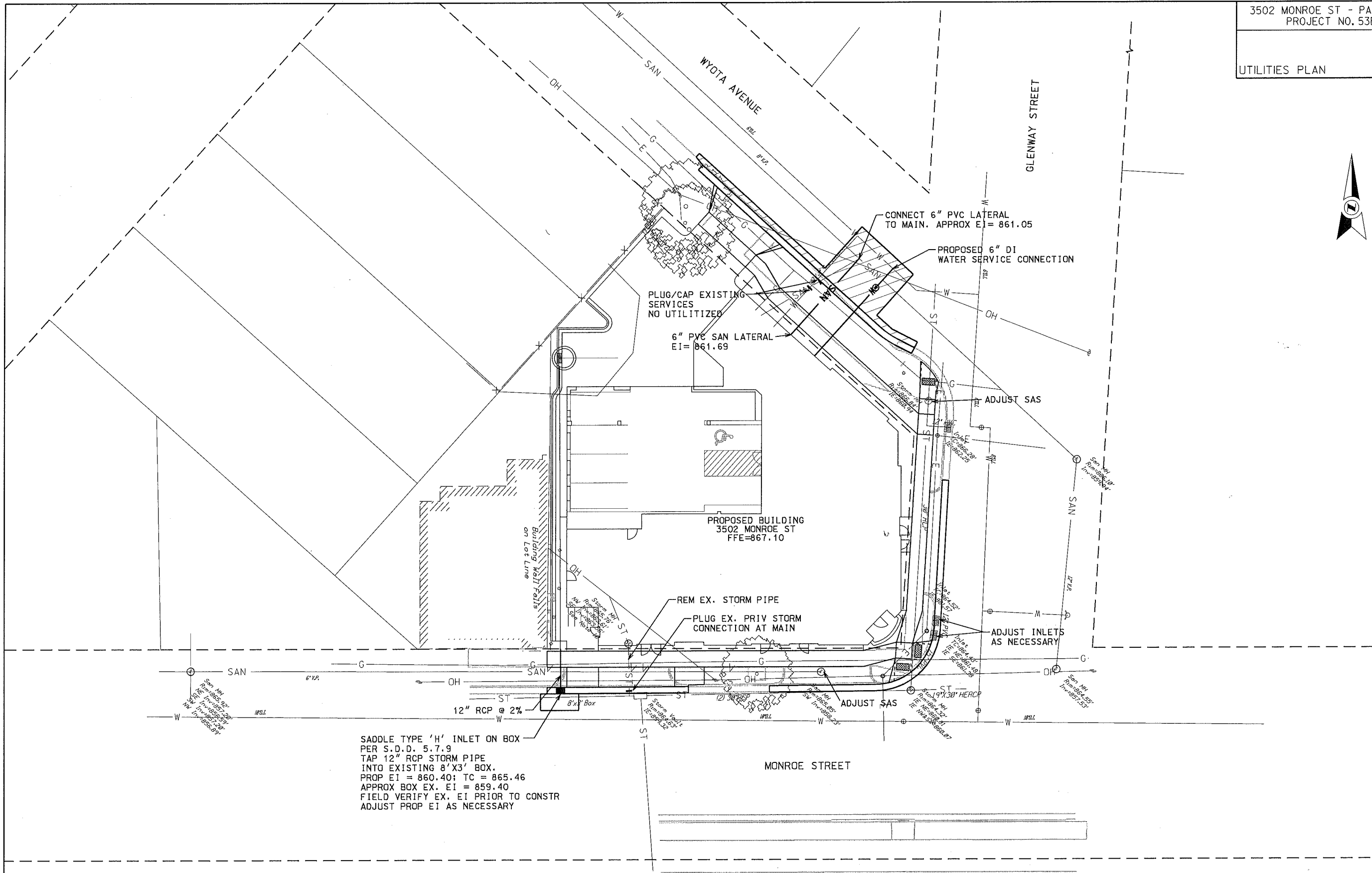
PLOT SCALE:
PLOT NAME:
REV. DATE:

ORIGINATOR: CITY OF MADISON, STREETS DIVISION

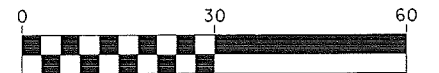


NOTE: COORDINATES FOR SPOT GRADES CAN BE OBTAINED FROM ENGINEER UPON REQUEST. CONTACT JIM WOLFE AT 608-266-4099

PLOT SCALE:
 PLOT NAME:
 REV. DATE:
 ORIGINATOR: CITY OF MADISON, STREETS DIVISION



SADDLE TYPE 'H' INLET ON BOX
PER S.D.D. 5.7.9
TAP 12" RCP STORM PIPE
INTO EXISTING 8'X3' BOX.
PROP EI = 860.40; TC = 865.46
APPROX BOX EX. EI = 859.40
FIELD VERIFY EX. EI PRIOR TO CONSTR
ADJUST PROP EI AS NECESSARY

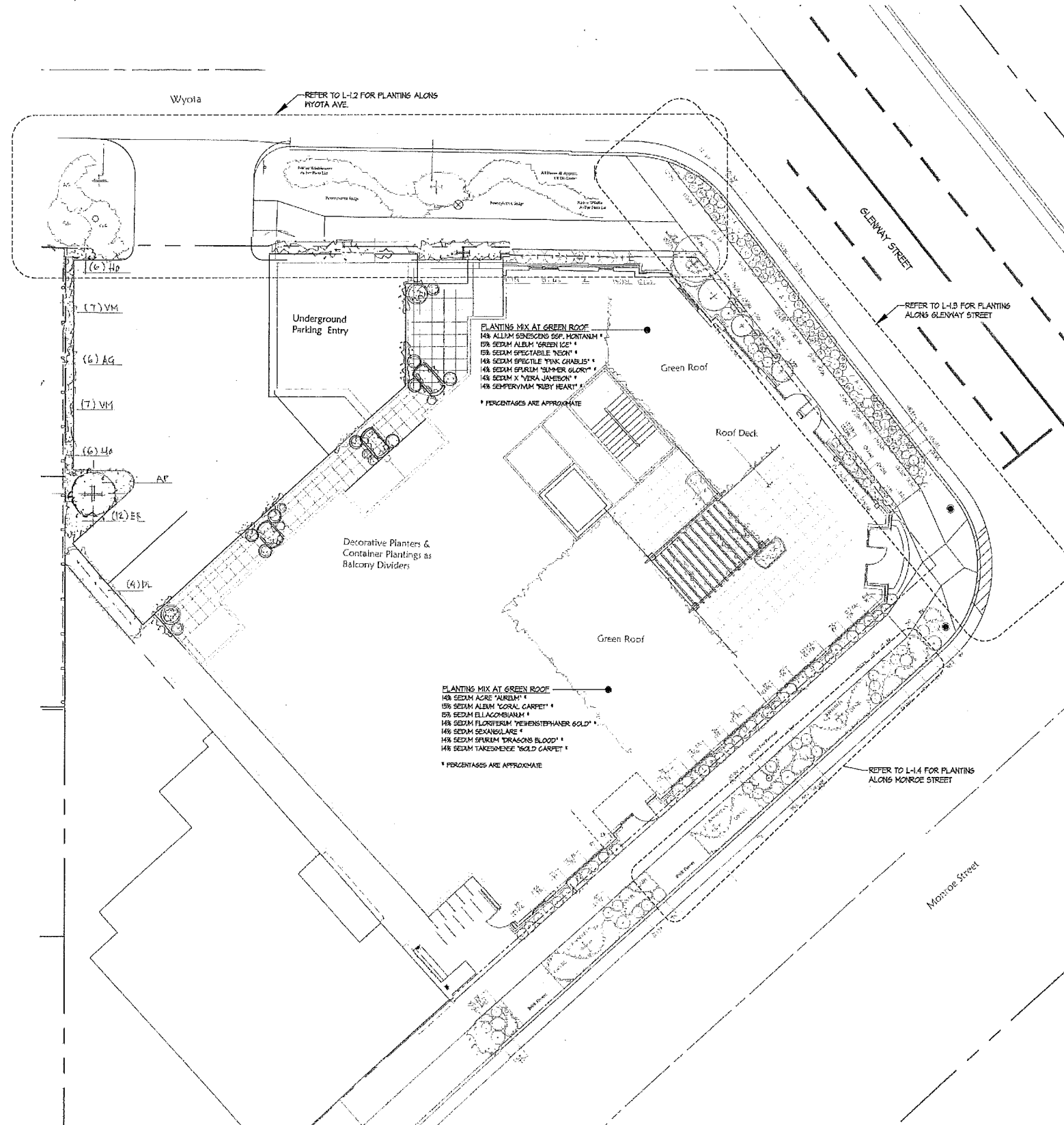


PLOT SCALE:
PLOT NAME:
REV. DATE:

ORIGINATOR: CITY OF MADISON, STREETS DIVISION

Consultant

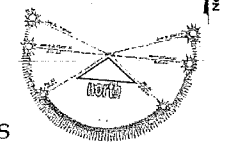
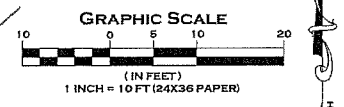
Notes



Key	Size	Common Name	Botanic name	Quantity
Plant List				
Deciduous Trees				
	2 1/2" caliper	New Horizon Elm	Ulmus hybrid	1
	2 1/2" caliper	Hackberry	Celtis occidentalis	1
	2 1/2" caliper	Crab Apple	Malus "Red Jewel"	2
	2 1/2" caliper	Japanese Tree Lilac	Syringa reticulata "Ivory Silk"	1
Deciduous Shrubs				
DL	2 gal cont	Dwarf Bush Honeysuckle	Diervilla lonicera	4
AP	24" bb/cont	Bottlebrush Buckeye	Aesculus parviflora	1
RT	24" cont	Gold Cutleaf sumac	Rhus typhina "Tiger Eyes"	1
VP	36" BB/cont	Blachaw Viburnum	Viburnum prunifolium	1
DB	18" BB/cont	Variegated Daphne	Daphne burkwoodii "Carol Mackie"	2
HB	2 gal cont	Annabelle Hydrangea	Hydrangea arborescens "Annabelle"	2
SN	3 gal cont	Black Elderberry	Sambucus nigra "Black Lace"	1
Perennials				
AM	4 1/2" cont	Sea Thrift	America maritime "splendens"	6
CA	4 1/2" cont	Feather Reed Grass	Calamagrostis acutifolia "Karl Foerster"	19
HL	4 1/2" cont	Plantain Lily / Funkia	Hosta lancifolia	41
OV	4 1/2" cont	Golden Oregano	Origanum vulgare "Aureum"	23
PP	4 1/2" cont	Purpleleaf Coral Bells	Heuchera micrantha "Palace Purple"	33
TS	4 1/2" cont	Mother of Thyme	Thymus serpyllum	6
AJ	4 1/2" cont	Japanese Anemone	Anemone x "Honore Jobert"	1
LM	4 1/2" cont	Spotted Nettle	Lamium maculatum "Red Nancy"	10
SR	4"-4 1/2" cont	Solomon's Plume	Smilacina racemosa	32
FV	4 1/2" cont	Birdfoot Violet	Viola pedata	10
BA	4 1/2" cont	Dwarf Blue Indigo	Baptisia australis minor	12
CM	4 1/2" cont	Shasta Daisy	Chrysanthemum maximum "Snow Boquet"	6
CV	4 1/2" cont	Threadleaf Tickseed	Coreopsis verticillata "Zagreb"	5
EM	4 1/2" cont	Dwarf Purple Coneflower	Echinacea x "Pixie Meadowbrite" or "PowWow"	12
ES	4 1/2" cont	Purple Love Grass	Eragrostis spectabilis	10
HC	4 1/2" cont	Daylily Hybrid	Hemerocallis x "Chicago Peach"	6
HP	4 1/2" cont	Daylily Hybrid	Hemerocallis x "Pardon Me"	7
LK	4 1/2" cont	Dwarf Blazingstar	Liatris spicata "Kobold"	12
PS	4 1/2" cont	Creeping Phlox	Phlox subulata "Red Wings"	4
RF	4 1/2" cont	Dwarf Black Eyed Susan	Rudbeckia fulgida speciosa "Little Suzy"	24
AE	4 1/2" cont	European Wild Ginger	Asarum europaeum	5
CO	4 1/2" cont	Evergold Japanese Sedge	Carex oshimensis	7
DG	4 1/2" cont	Cheddar Pinks	Dianthus gratianopolitanus "Tiny Rubies"	5
FG	4 1/2" cont	Blue Fescue	Festuca glauca "Elijah Blue"	7
SR	4 1/2" cont	Stonecrop	Sedum rupestre "Angelina"	5
AG	4 1/2" cont	Ghost Fern	Athyrium hybrid "Ghost"	6
ER	4 1/2" cont	Red Barrenwort	Epimedium c rubrum	12
HO	4 1/2" cont	Lenten Rose	Helleborus orientalis "Red Lady"	12
VM	4 1/2" cont	Periwinkle	Vinca minor "Bowles"	14
MN	1 gal cont.	Silver Maiden Grass	Miscanthus sinensis "Nippon"	2
PA	1 gal cont	Dwarf Fountain Grass	Pennisetum alopecuroides "Hamelin"	12
PV	1 gal cont	Switch Grass	Panicum virgatum "Prairie Sky"	3
ST	1 gal cont	Dwarf Prairie Dropseed	Sporobolus heterolepis "Tara"	10
CS	1 gal cont	Black Snakeroot	Cimicifuga simplex "Hillside Black Beauty"	6
HS	1 gal cont	Funkia	Hosta "Stained Glass"	7
HH	5 gal cont	Climbing Hydrangea	Hydrangea anomala petiolaris "Miranda"	1
LD	1 gal cont	Goldenray	Ligularia dentata "Desdemona"	2
ER	1 gal cont	Purple Coneflower	Echinacea purpurea "Ruby Giant"	4
HM	1 gal cont	Gold Japanese Woodgrass	Hakonechloa macra "Aureola"	9
WM1	3" pot	Pennsylvania Sedge	Carex pennsylvanica	448
WM2	3" pot	Canada Anemone	Anemone canadensis	32
WM3	3" pot	Columbine	Aquilegia Canadensis	32
WM4	3" pot	Bottle Gentian	Gentiana andrewsii	62
WM5	3" pot	Wild Geranium	Geranium maculatum	32
WM6	3" pot	American Alum Root	Heuchera Americana	32
WM7	3" pot	Jacobs Ladder	Polemonium reptans	32
WM8	3" pot	Wild Blue Phlox	Phlox divaricata	32
WM9	3" pot	Zigzag Goldenrod	Solidago flexicaulis	32
WM10	seed	Shooting Stars	Dodocatheon meadia	1 oz.
AS	3" pot	Wild Ginger	Asarum candense	20

A Seasonally Selected Annuals Annual Flowers and Grasses

NOTE:
1. NO LANDSCAPING SHALL BE ALLOWED TO INTERFERE WITH THE SIGHT TRIANGLES AS REQUIRED IN THE M&O AT THE INTERSECTIONS OF GLENWAY ST. AND WYOTA AVE., GLENWAY ST. AND MONROE ST., OR AT THE DRIVEWAY ON WYOTA AVE.
2. LANDSCAPER TO CONTACT CITY FORESTRY AT LEAST 48 HOURS PRIOR TO PLANTING.



Second Nature Landscapes

SCALE: 1/8" = 8' FT
ARCH: PAM
DATE: 24 MAY 2011
REV 1: 13 JUN 2011
REV 2: 12 JULY 2011
REV 3: 8 October 2011

PROJECT: PARMAN
SHEET: 1

Project Title
Parman Place
3502 Monroe Street

Drawing Title
Landscape Plan

Project No. 1038 Drawing No. L-1.1

This document contains confidential or proprietary information of Knothe & Bruce Architects. Neither the document nor the information herein is to be reproduced, distributed, sent, or accessed, other than in the manner specifically authorized by Knothe & Bruce Architects. Knothe & Bruce Architects is a Limited Liability Company of Wisconsin.

Consultant

Notes

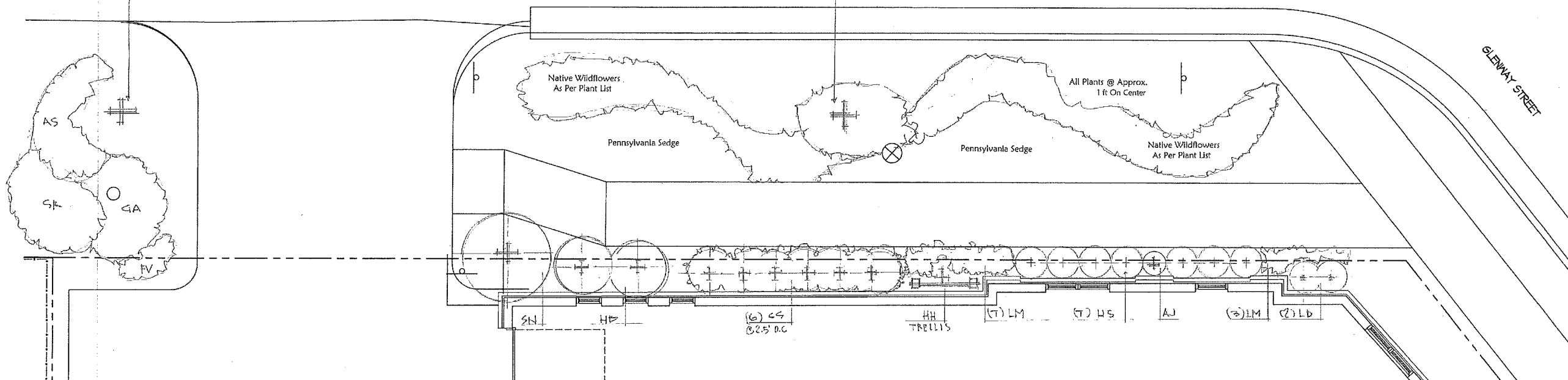
Wyota Avenue Building Foundation				
AJ	1	Japanese Anemone	Anemone x 'Honorine Jobert'	4.5" cont
CS	6	Black Snakeroot	Cimicifuga simplex 'Hillside Black Beauty'	1 gal cont
HS	7	Funkia	Hosta 'Stained Glass'	1 gal cont
HH	1	Climbing Hydrangea	Hydrangea anomala petiolaris 'Miranda'	5 gal cont
HB	2	Annabelle Hydrangea	Hydrangea arborescens 'Annabelle'	2 gal cont
LD	2	Goldenray	Ligularia dentata 'Desdemona'	1 gal cont
LV	10	Spotted Nettle	Lamium maculatum 'Red Nancy'	4.5" cont
SN	1	Black Elderberry	Sambucus nigra 'Black Lace'	3 gal cont
Wyota Avenue Terrace Wildflower Meadow				
WM1	448	Pennsylvania Sedge	Carex pennsylvanica	3" pot
WM2	32	Canada Anemone	Anemone canadensis	3" pot
WM3	32	Columbine	Aquilegia Canadensis	3" pot
WM4	32	Bottle Gentian	Gentiana andrewsii	3" pot
WM5	32	Wild Geranium	Geranium maculatum	3" pot
WM6	32	American Alum Root	Heuchera americana	3" pot
WM7	32	Jacobs Ladder	Polemonium reptans	3" pot
WM8	32	Wild Blue Phlox	Phlox divaricata	3" pot
WM9	1 oz	Zigzag Goldenrod	Solidago flexicaulis	3" pot
		Shooting Stars	Dodocatheon meadia	Seed
Wyota Avenue Northwest Terrace				
AS	20	Wild Ginger	Asarum canadense	3" pot
GA	30	Bottle Gentian	Gentiana andrewsii	3" pot
SR	32	Solomon's Plume	Smilacina racemosa	4" 4.5" cont
FV	10	Birdfoot Violet	Viola pedata	4.5" pot

STREET TREE AS PER
MADISON FORESTRY
RECOMMENDATIONS 10/4/11
ULMUS HYBRID
'NEW HORIZON ELM'

STREET TREE AS PER
MADISON FORESTRY
RECOMMENDATIONS 10/4/11
CELTIS OCCIDENTALIS
'HACKBERRY'

WYOTA AVENUE

GLENWAY STREET



WYOTA AVENUE
1/4" = 1'-0"



Second Nature
Landscapes

SCALE: 1/4" = 4' FT
ARCH: PAJ
DATE: 24 MAY 2011
REV: 18 June 2011
REV: 12 July 2011
REV: 9 October 2011

Revisions
Issued To Planning - May 25, 2011
Site Plan Submittal - September 14, 2011
Issued - September 20, 2011

Project Title
Parman Place
3502 Monroe Street

Drawing Title
**Landscape Plan -
Street Terr. Details**

Project No. Drawing No.

1038 L-1.2

This document contains confidential or proprietary information of Knothe & Bruce Architects. Neither this document nor the information herein is to be reproduced, distributed, used, or accessed, either in whole or in part, without the express written authorization of Knothe & Bruce Architects. Knothe & Bruce Architects is a Limited Liability Company of Wisconsin.

Consultant

Notes

Glenway Street Terrace

BA	12	Dwarf Blue Indigo
CM	6	Shasta Daisy
CV	5	Threadleaf Tickseed
EM	12	Dwarf Purple Coneflower
ES	10	Purple Love Grass
HC	6	Daylily Hybrid
HP	7	Daylily Hybrid
OV	4	Golden Oregano
LK	12	Dwarf Blazingstar
PA	11	Dwarf Fountain Grass
PP	7	Purpleleaf Coral Bells
PS	4	Creeping Phlox
RF	24	Dwarf Black Eyed Susan
ST	5	Dwarf Prairie Dropseed

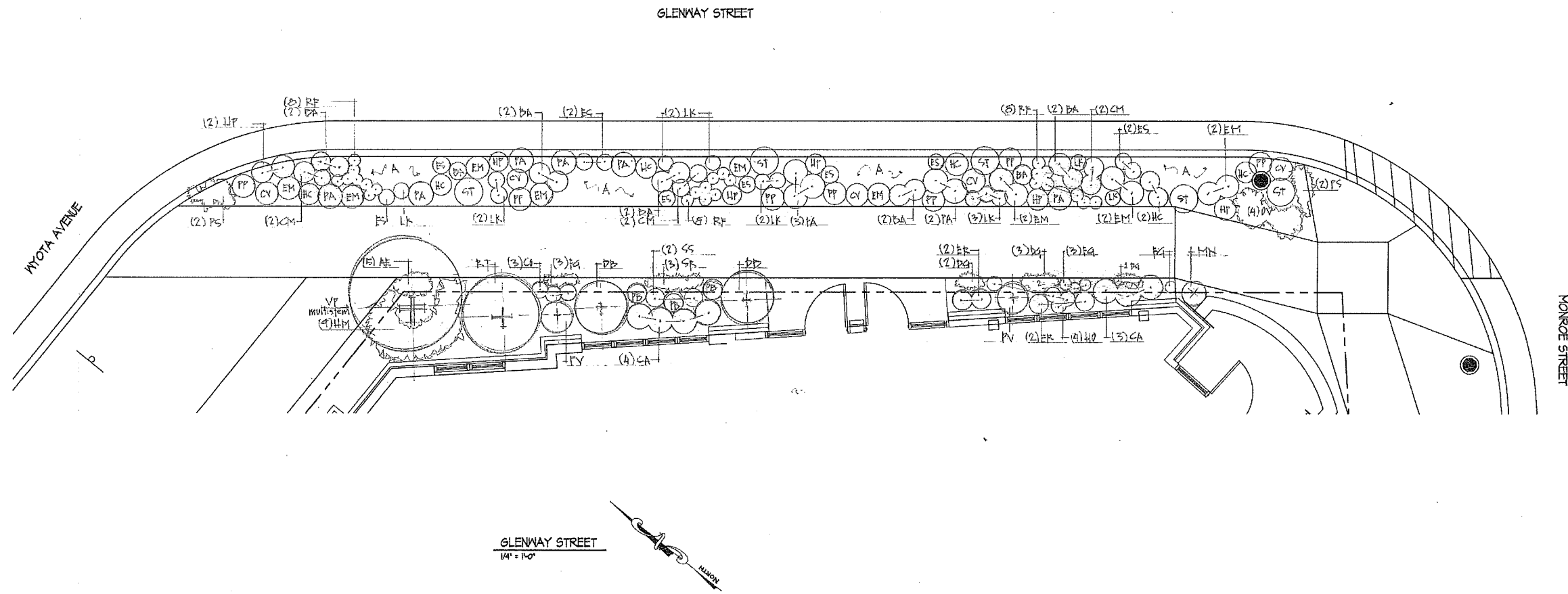
Baptisia australis minor	4.5" cont
Chrysanthemum maximum 'Snow Boquet'	4.5" cont
Coreopsis verticillata 'Zagreb'	4.5" cont
Echinacea x 'Pixie Meadowbrite' or 'PowWow'	4.5" cont
Eragrostis spectabilis	4.5" cont
Hemerocallis x 'Chicago Peach'	4.5" cont
Hemerocallis x 'Pardon Me'	4.5" cont
Origanum vulgare 'Aureum'	4.5" cont
Liatis spicata 'Kobold'	4.5" cont
Pennisetum alopecuroides 'Hamein'	1 gal cont
Heuchera micrantha 'Palace Purple'	4.5" cont
Phlox subulata 'Red Wings'	4.5" cont
Rudbeckia fulgida speciosa 'Little Suzy'	4.5" cont
Sporobolus heterolepis 'Tara'	1 gal cont

Glenway Street Building Foundation

A	Annual Flowers & Grasses	
AE	5	European Wild Ginger
CA	7	Feather Reed Grass
CO	7	Evergold Japanese Sedge
DB	2	Variegated Daphne
DG	5	Cheddar Pinks
ER	4	Purple Coneflower
FG	7	Blue Fescue
HM	9	Gold Japanese Woodgrass
MN	1	Silver Maiden Grass
PB	3	Dwarf Fountain Grass
PV	2	Switch Grass
SR	3	Stoncrop
SS	2	Stoncrop
RT	1	Gold Cutleaf Sumac
VP	1	Blackhaw Viburnum

Selected Seasonally	
Asarum europaeum	4.5" cont
Calamagrostis acutifolia 'Karl Foerster'	4.5" cont
Carex oshimensis	4.5" cont
Daphne burkwoodii 'Carol Mackie'	18"BB /cont
Dianthus gratianopolitanus 'Tiny Rubies'	4.5" cont
Echinacea purpurea 'Ruby Giant'	1 gal cont
Festuca glauca 'Elijah Blue'	4.5" cont
Hakonechloa macro 'Aureola'	1 gal cont
Miscanthus sinensis 'Nippon'	1 gal cont
Pennisetum alopecuroides 'Little Bunny'	1 gal cont
Panicum virgatum 'Prairie Sky'	1 gal cont
Sedum rupestre 'Angelina'	4.5" cont
Sedum spectabile 'African Sunset'	4.5" cont
Rhus typhina 'Tiger Eyes'	24" cont
Viburnum prunifolium	36"BB /cont

NOTE: ** Indicates discrepancy with Landscape Plan annotation or quantity. This Plant List's Key & Quantities shall supercede Plan discrepancies in such line-item cases.



Revisions
Issued To Planning - May 25, 2011
Site Plan Submittal - September 14, 2011
Issued - September 20, 2011

Second Nature Landscapes

SCALE: 1/4" = 4' FT
ARCH: PAN
DATE: 24 MAY 2011
REV: 13 June 2011
REV: 12 July 2011
REV: 8 October 2011

Project Title
Parman Place
3502 Monroe Street

Drawing Title
Landscape Plan -
Street Terr. Details

Project No. **1038** Drawing No. **L-1.3**

This document contains confidential or proprietary information of Knothe & Bruce Architects. Neither the drawings nor the information herein is to be reproduced, distributed, used, or altered in whole or in part, except as specifically authorized by Knothe & Bruce Architects. Knothe & Bruce Architects is a licensed landscape contractor in Wisconsin.

