

750 UNIVERSITY ROW EXPANSION



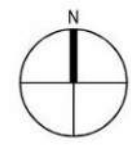
SITE
PUD
BOUNDARY

UNIVERSITY AVE

WHITNEY WAY

OLD MIDDLETON RD

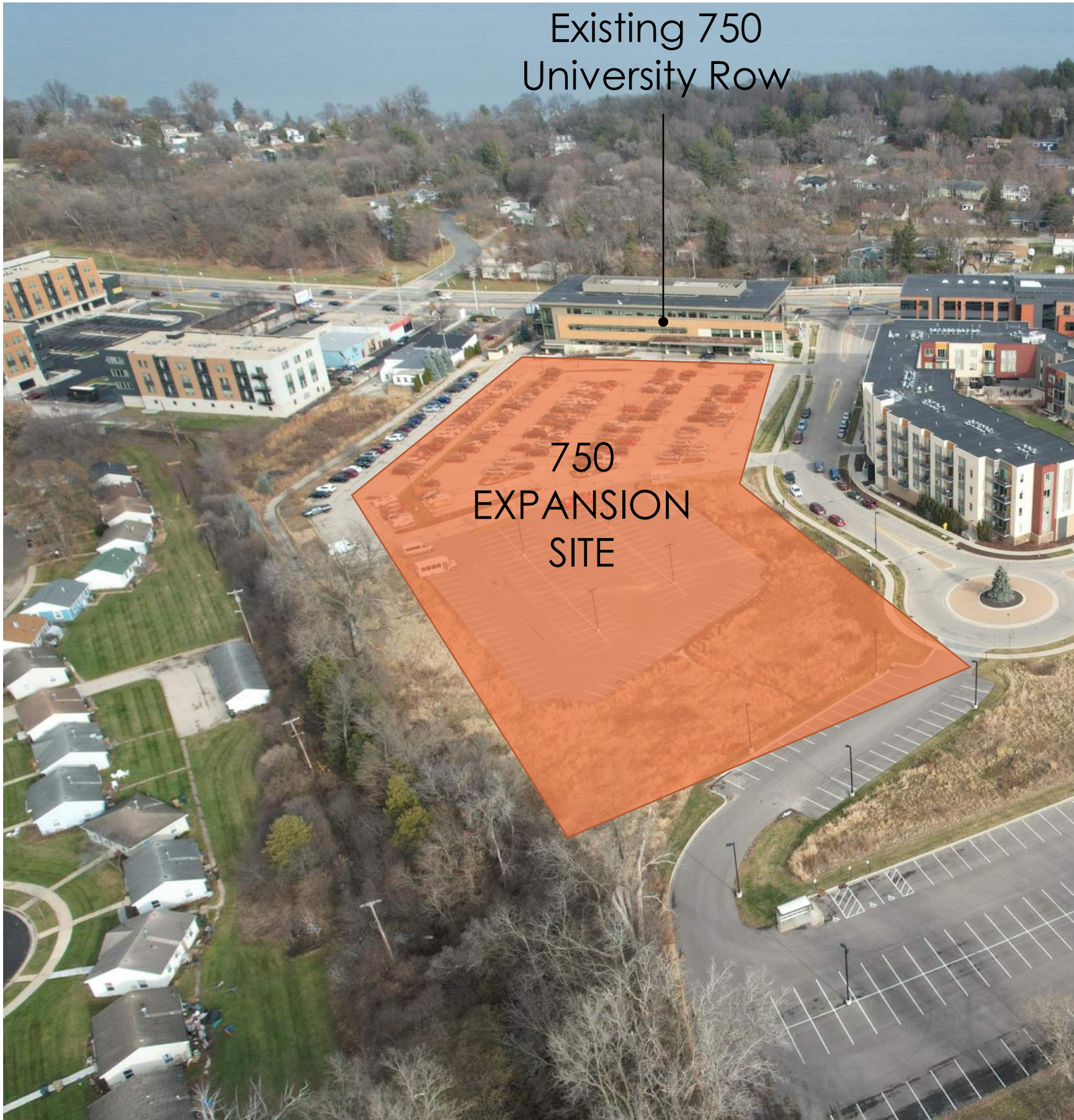
EAU CLAIRE AVE





Existing 750
University Row

750
EXPANSION
SITE



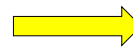








Existing 750
University Row

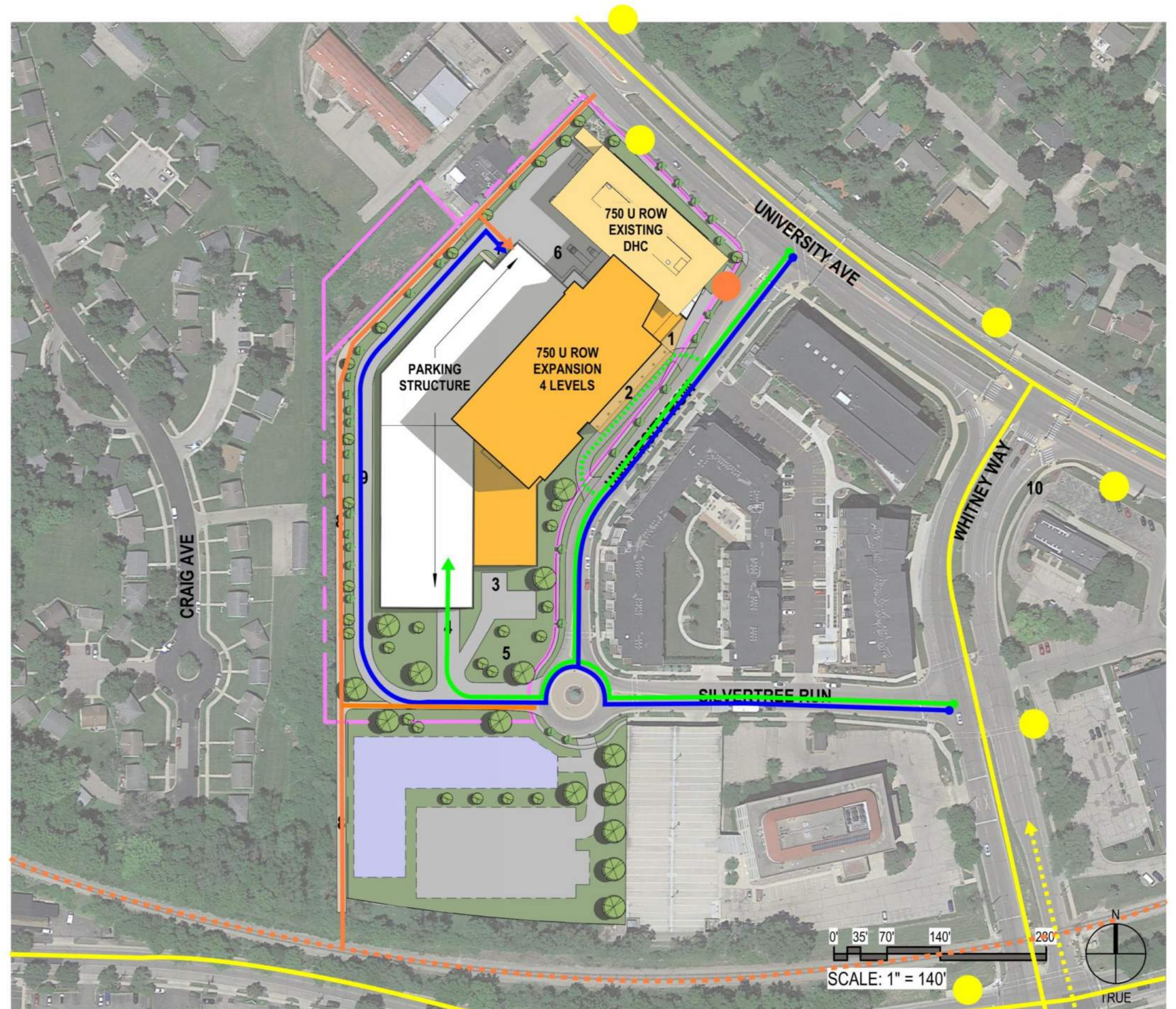
750
EXPANSION
SITE

- 180,000 square foot, Four-story addition
- Targeting LEED Gold certification
- 830 car parking structure
- Urgent care, specialist clinics, primary care clinics (relocated 20 S Park and West Towne Urgent care)
- Diagnostic Imaging, Lab, and Retail Pharmacy
- Building will be open M-F, 7 am-5 pm
- Urgent Care will be open above hours in addition to evenings and weekends until 8pm

- 1 MAIN ENTRY
- 2 PATIENT DROP-OFF / PICK-UP
- 3 AMBULANCE PICK-UP AND EXTENDED VEHICLE PARKING
- 4 VISITOR PARKING ENTRY / EXIT
- 5 DRY DETENTION
- 6 LOADING DOCK (NEW)
- 7 STAFF PARKING ENTRY / EXIT
- 8 BIKE PATH
- 9 SERVICE DRIVE
- 10 EXISTING BUS STOP



-  BUS ROUTES
-  BUS STOPS
-  ROUTE FROM FUTURE BRT STOP AT SHEBOYGAN / EAU CLAIRE TO BEGIN 2023
-  BIKE PATHS
-  B-CYCLE STATION
-  VISITOR/PATIENT VEHICLES
-  VISITOR DROP-OFF
-  STAFF VEHICLES
-  PROPERTY LINE

















RAINWATER HARVESTING

SHADING DEVICES

BIRD DETERRENT GLASS

GREEN ROOF/S

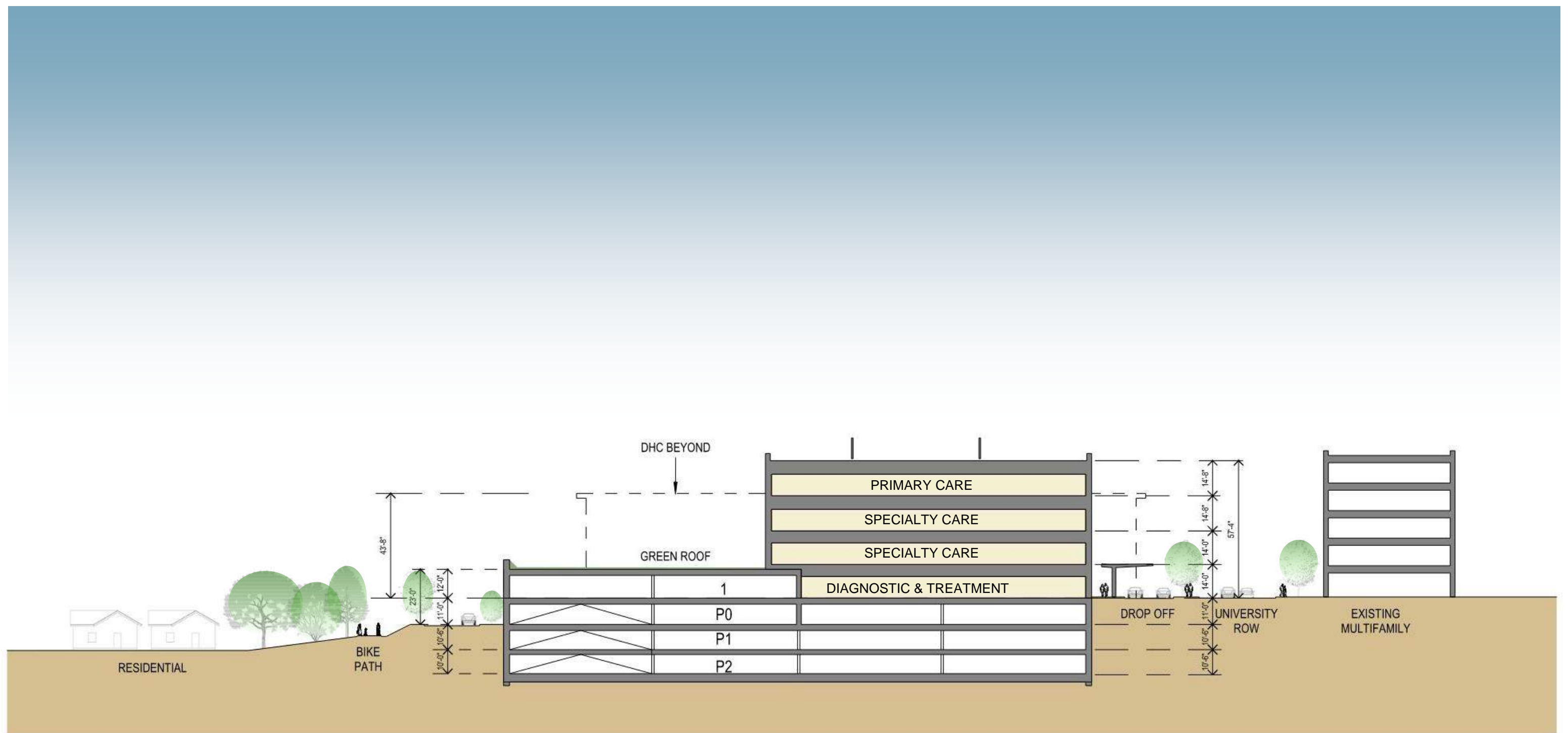
SOLAR PANELS

EV CHARGING BIKE FACILITES

IMPERVIOUS REDUCTION

BIORETENTION

NATIVE LANDSCAPING





UNIVERSITY CROSSING
5102 SILVERTREE RUN



OFFICES
610 N WHITNEY WAY



OFFICES
749 UNIVERSITY AVENUE



UNIVERSITY ROW APARTMENTS
725 UNIVERSITY ROW



LOT 3
SILVERTREE RUN & UNIVERSITY ROW



HARBOR VIEW APARTMENTS
5265 UNIVERSITY AVENUE



SPRING HARBOR ANIMAL HOSPITAL
5129 UNIVERSITY AVENUE



MIDAS
5201 UNIVERSITY AVENUE





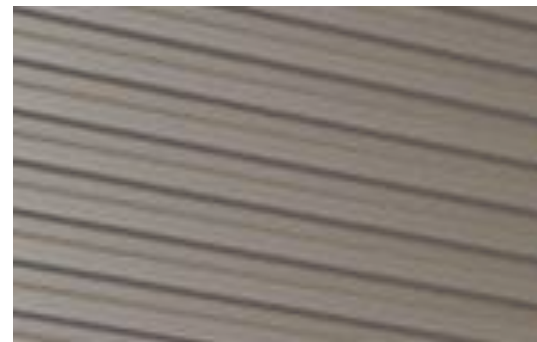
Soffit (Wood-look metal)



Brick



Perforated Metal Panel (@ Parking)



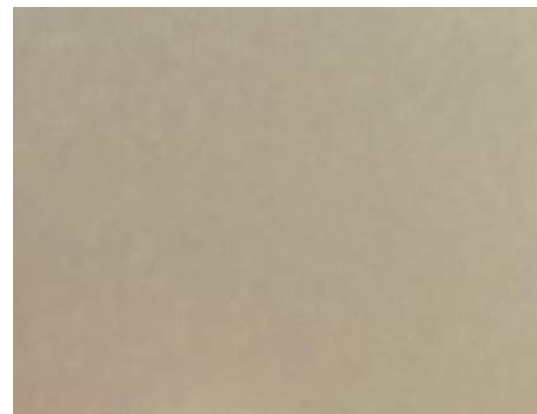
Ribbed Metal



Brick



Calcium Silicate/Glass



Mullions, Trim, Composite



Reroute existing storm sewer around south side of proposed expansion

- Improvements will reduce the total amount of pavement
- The site will meet the new City of Madison stormwater requirements by reducing runoff rates and runoff volume compared to existing conditions

