

Zoning Districts

Residential Districts

- SR-C1 Suburban Residential - Consistent District 1
- SR-C2 Suburban Residential - Consistent District 2
- SR-C3 Suburban Residential - Consistent District 3
- SR-V1 Suburban Residential - Varied District 1
- SR-V2 Suburban Residential - Varied District 2
- TR-C1 Traditional Residential - Consistent District 1
- TR-C2 Traditional Residential - Consistent District 2
- TR-C3 Traditional Residential - Consistent District 3
- TR-C4 Traditional Residential - Consistent District 4
- TR-U1 Traditional Residential - Urban District 1
- TR-U2 Traditional Residential - Urban District 2
- TR-V1 Traditional Residential - Varied District 1
- TR-V2 Traditional Residential - Varied District 2
- TR-R Traditional Residential - Rustic District
- TR-P Traditional Residential - Planned District

Employment Districts

- TE Traditional Employment District
- SE Suburban Employment District
- SEC Suburban Employment Center District
- EC Employment Campus District
- IL Industrial - Limited District
- IG Industrial - General District

Downtown and Urban Districts

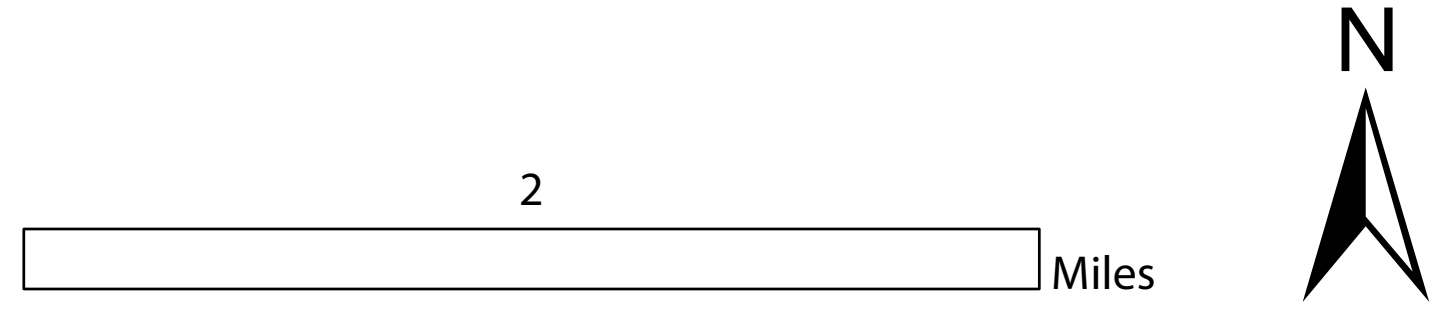
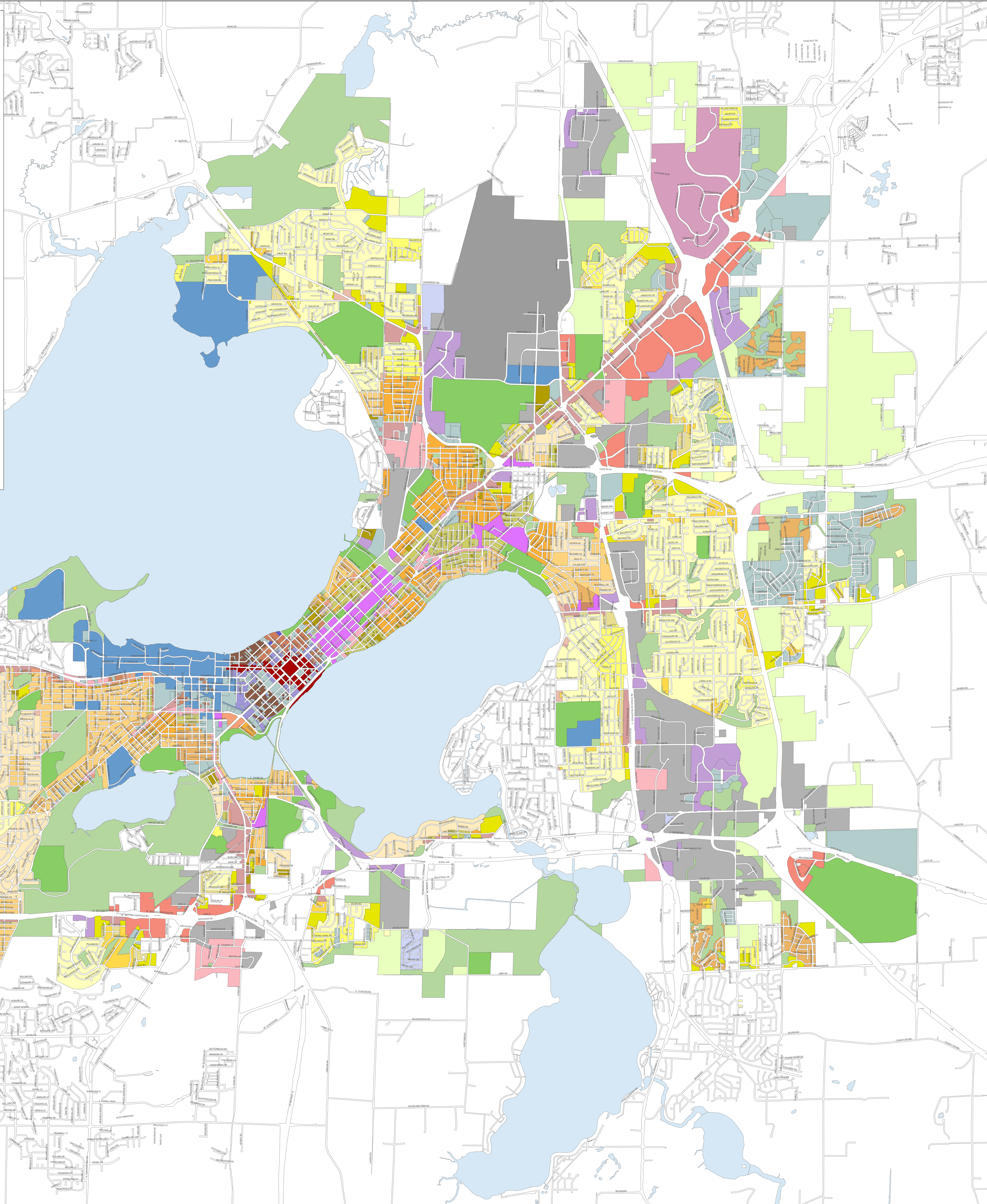
- DC Downtown Core District
- UOR Urban Office Residential District
- UMX Urban Mixed Use District
- DRI Downtown Residential 1
- DR2 Downtown Residential 2

Commercial and Mixed-Use Districts

- LMX Limited Mixed Use District
- NMX Neighborhood Mixed Use District
- TSS Traditional Shopping Street District
- MXC Mixed-Use Center District
- CC-T Commercial Corridor - Transitional District
- CC Commercial Center District

Special Districts

- A Agricultural District
- UA Urban Agricultural District
- CN Conservancy District
- PR Parks and Recreation District
- AP Airport District
- CI Campus Institutional District
- PD Planned Development District
- PMHP Planned Mobile Home Park District



Prepared by the City of Madison Planning Division and Zoning Staff | August 2014