

Design Alternatives Workshop: Crazylegs Plaza & Wingra Park Entrance

September 14, 2017



Tonight's Agenda

Thank you to Wingra School!

1. Project Overview & Input To-Date
2. Presentation of Design Alternatives
3. Review and Discussion

Project Team

- Ken Saiki Design, Landscape Architecture
 - Ken Saiki, PLA
 - Julia Schilling, ASLA
- Urban Assets, Public Engagement
- Marcia Yapp, Public Art
- Pierce Engineering, Structural Engineering



Elizabeth Link Peace Park

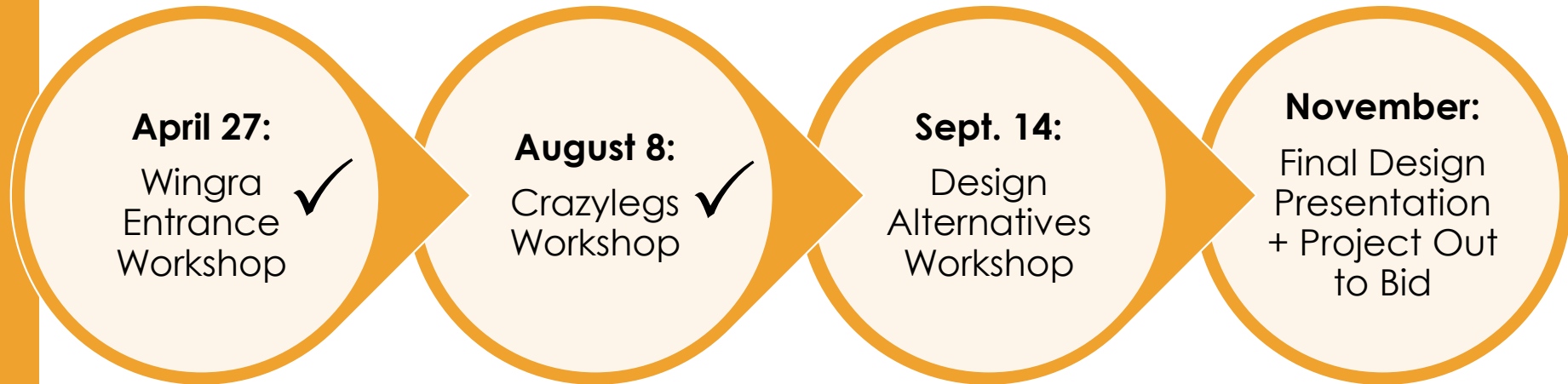


Marcia Yapp Mosaic Murals "Abundance"



The Village in Wauwatosa

Engagement Process



Project Scope

- Design Wingra Park Entrance (~105' frontage)
 - Maintain viewshed to Lake Wingra
 - New bus shelter
 - Improve visibility and accessibility
 - Seating, innovative stormwater mgmt, and a landscape feature (e.g., rain garden)
- Design Crazylegs Plaza (~25,000 ft²)
 - Resilient design
 - Game day vending
 - Bicycle & pedestrian connections & amenities
 - Innovative stormwater management
- Include public art in both locations.

Public Art Opportunities



Badger sculpture,
by Harry Whitehorse
(requires
bronze
casting)



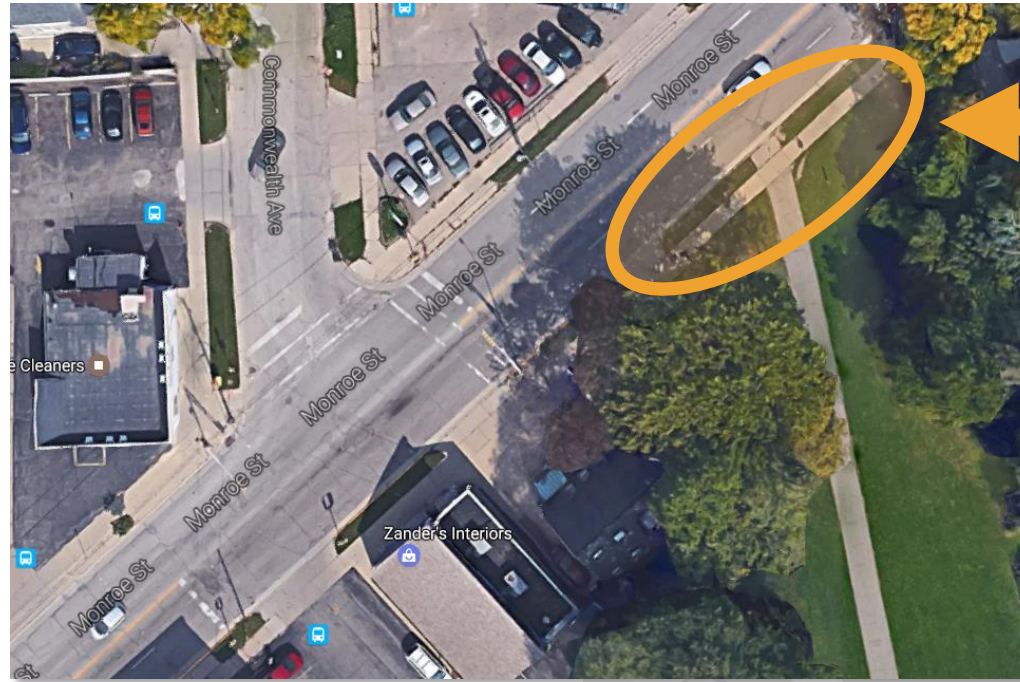
Anchorlily 2, by William Turnbull



Wingra Park Entrance

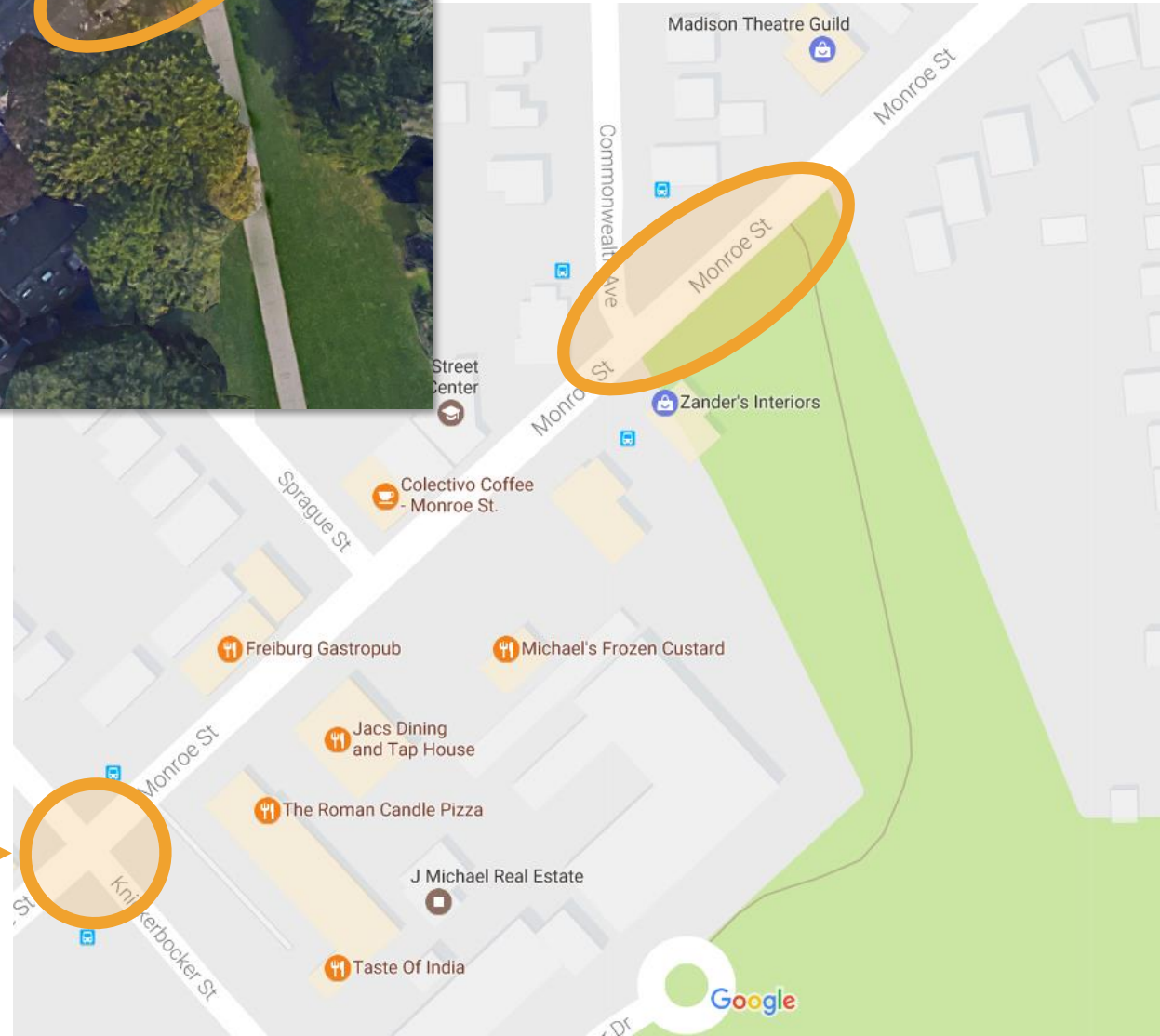
Context + Community Input

Context



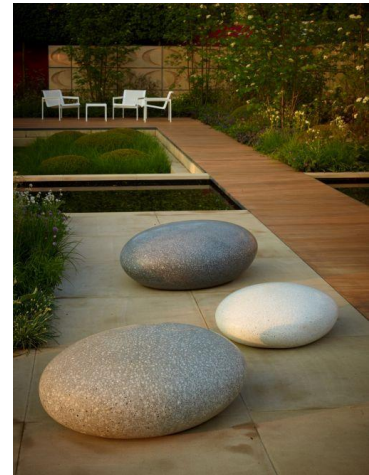
- Full width, 50' into park from back of sidewalk

Future raised intersection at Knickerbocker



Wingra Park Entrance Workshop Takeaways

- Split path at entrance into a “Y” shape; widen to accommodate all uses
- Understated public art or signage relating to the park environment & activities
- Rain or butterfly garden
- Low-profile seating, organic shapes
- Drinking fountain
- Avoid restricting lake view
- Do not impair views of cyclists





Wingra Park Entrance

Preliminary Design

Wingra Entrance Preliminary Design



Wingra Entrance – Existing View



Wingra Entrance – Proposed Design



Wingra Entrance – Modeling



Looking East

Wingra Entrance – Modeling



Mosaic Art Panels, Curved Seat Wall, & Anchorlily Sculpture

Wingra Entrance – Modeling



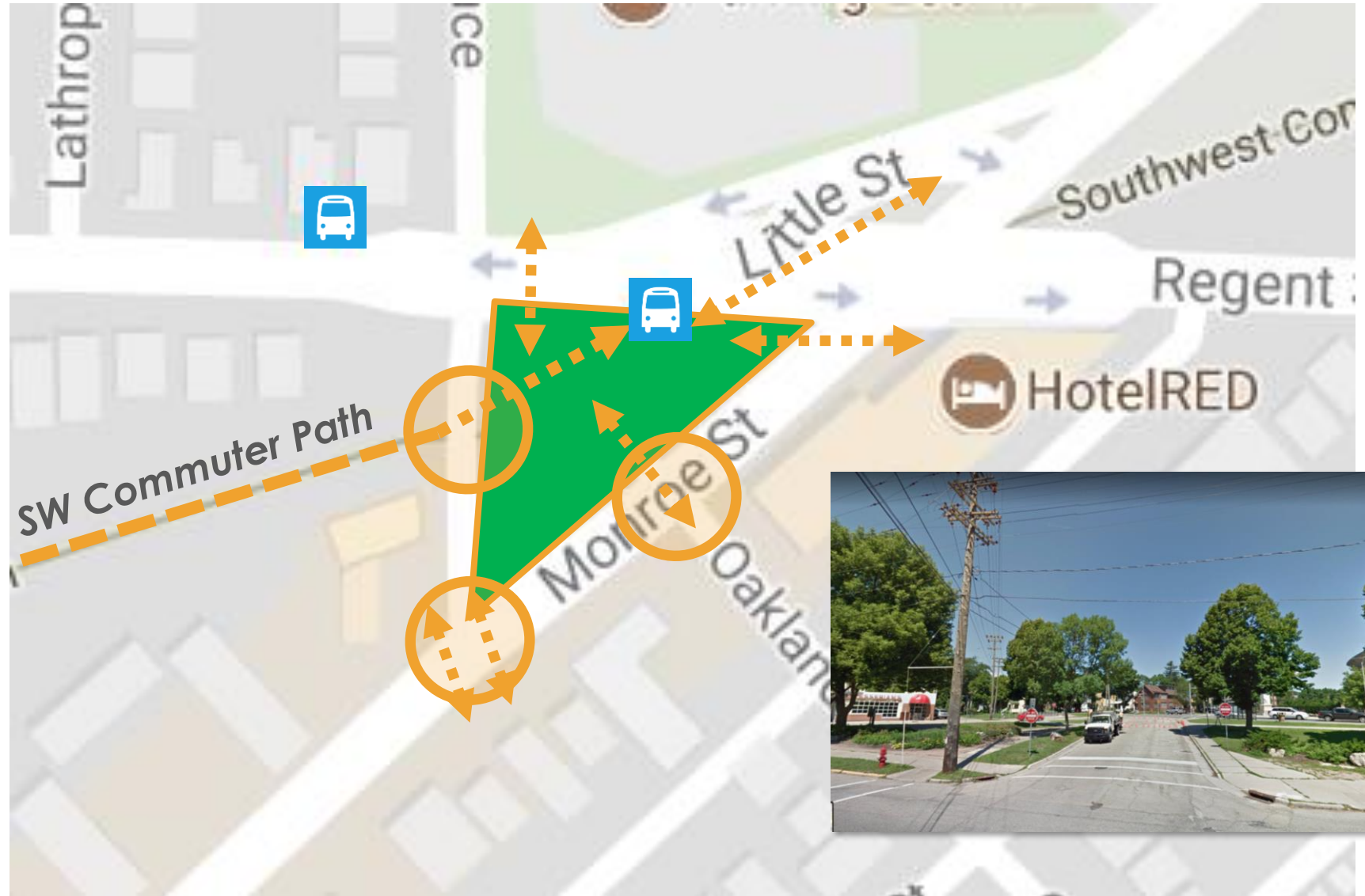
Looking West



Crazylegs Plaza

Context + Community Input

Context



Context



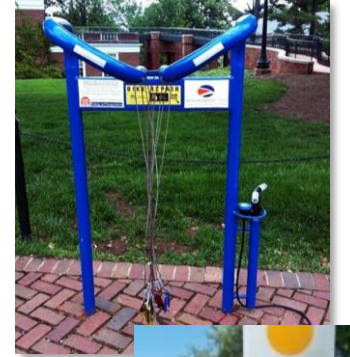
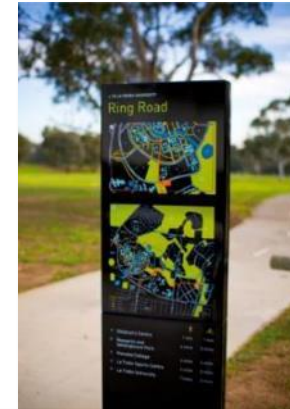
- UW Master Plan – Field House South Plaza



- New mixed-use development

Design Opportunities

- Better multimodal connections (bus, bike, ped)
- Green infrastructure
- Decorative plantings
- Gathering spaces
- Vending spaces
- Seating
- Public art
- Bus stop amenities
- Signage (welcome, educational)



Crazylegs Workshop Takeaways

- Current context/role:
 - Meet-up point for bicyclists
 - UW game day celebrations
 - Gateway to three neighborhoods
- Opportunities:
 - 365-day use
 - Realign bike path; enhance as a central feature
 - Add bike amenities (parking, repair station)
 - Improve bike/ped connections & minimize conflicts
 - Consider educational signage and/or branding
 - Improve functionality for vending, food carts
 - Improve seating



www.Wisconsin-explorer.blogspot.com

Crazylegs Workshop Takeaways

- Green Infrastructure
 - Enhance green space
 - Consider game day interactions
- Mosaic Art
 - Consider integration with bike path and/or seat wall
- Seating
 - Integrate permanent seating into landscape (rocks, stairs, low walls, etc.)
 - Consider interactions during game days
- Design Themes
 - Preference for traditional urban park feel with more green space





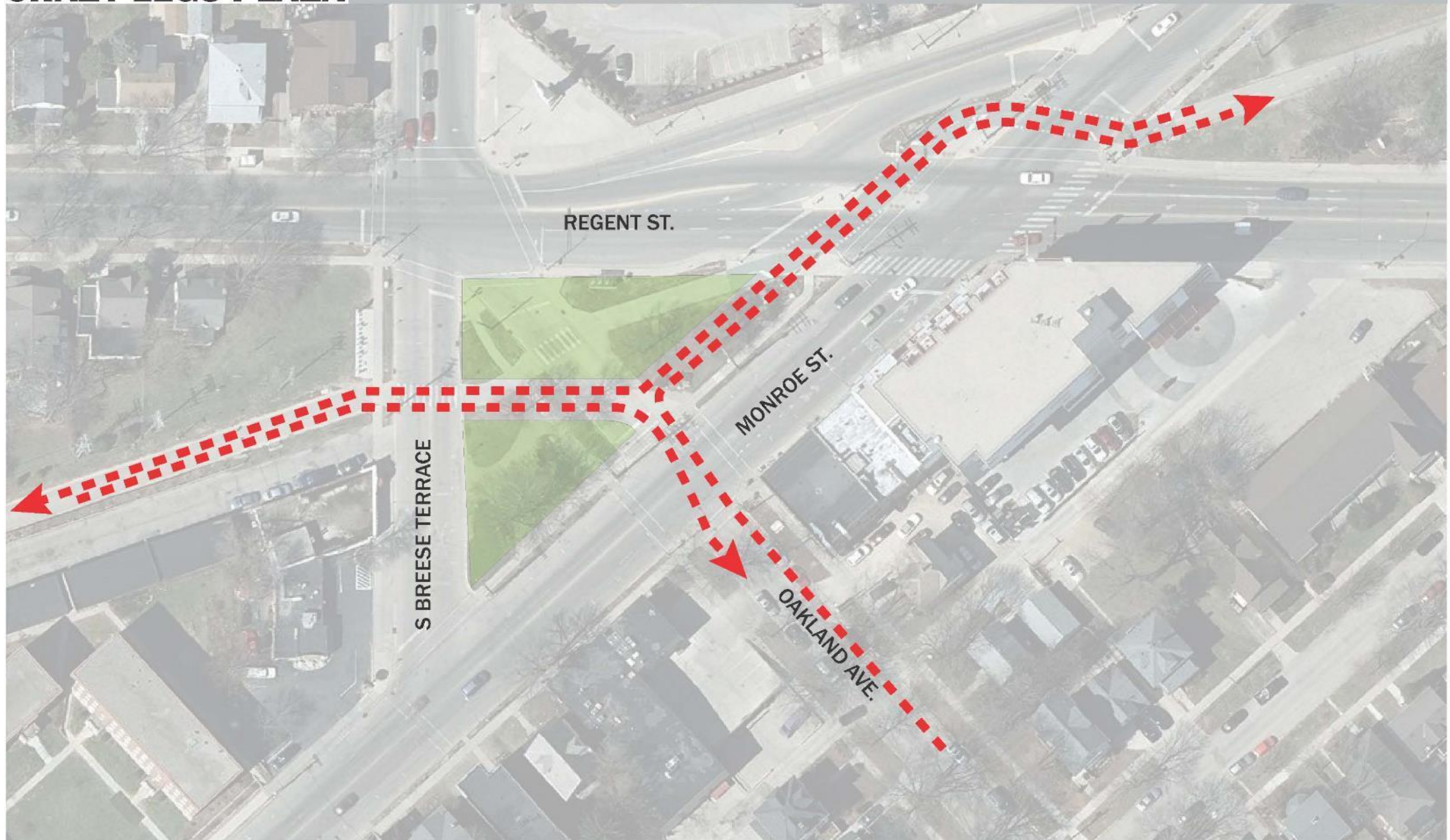
Crazylegs Plaza

Design Alternatives

Bike Route Studies

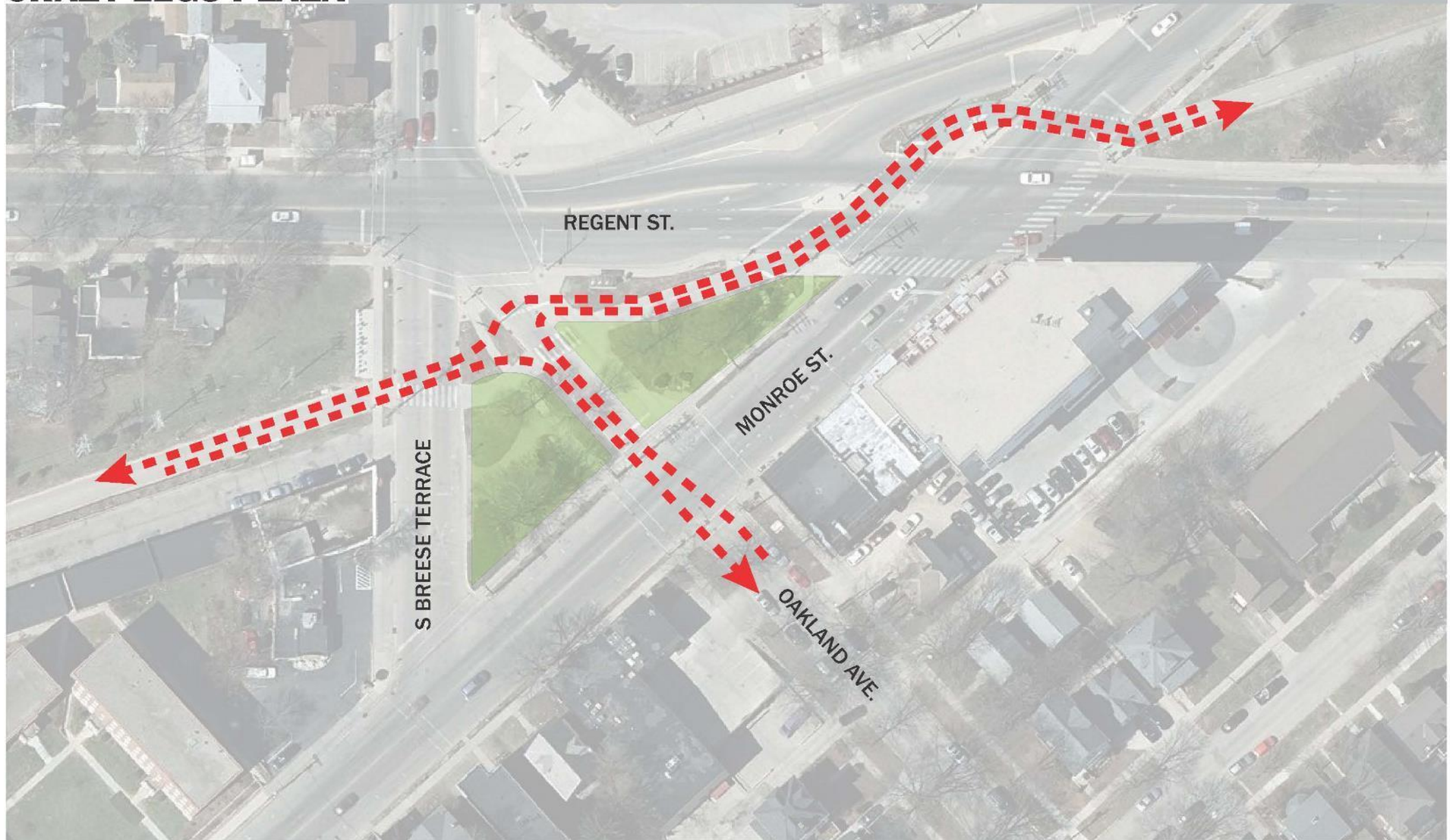


CRAZY LEGS PLAZA



BIKE ROUTE STUDY #1

CRAZY LEGS PLAZA

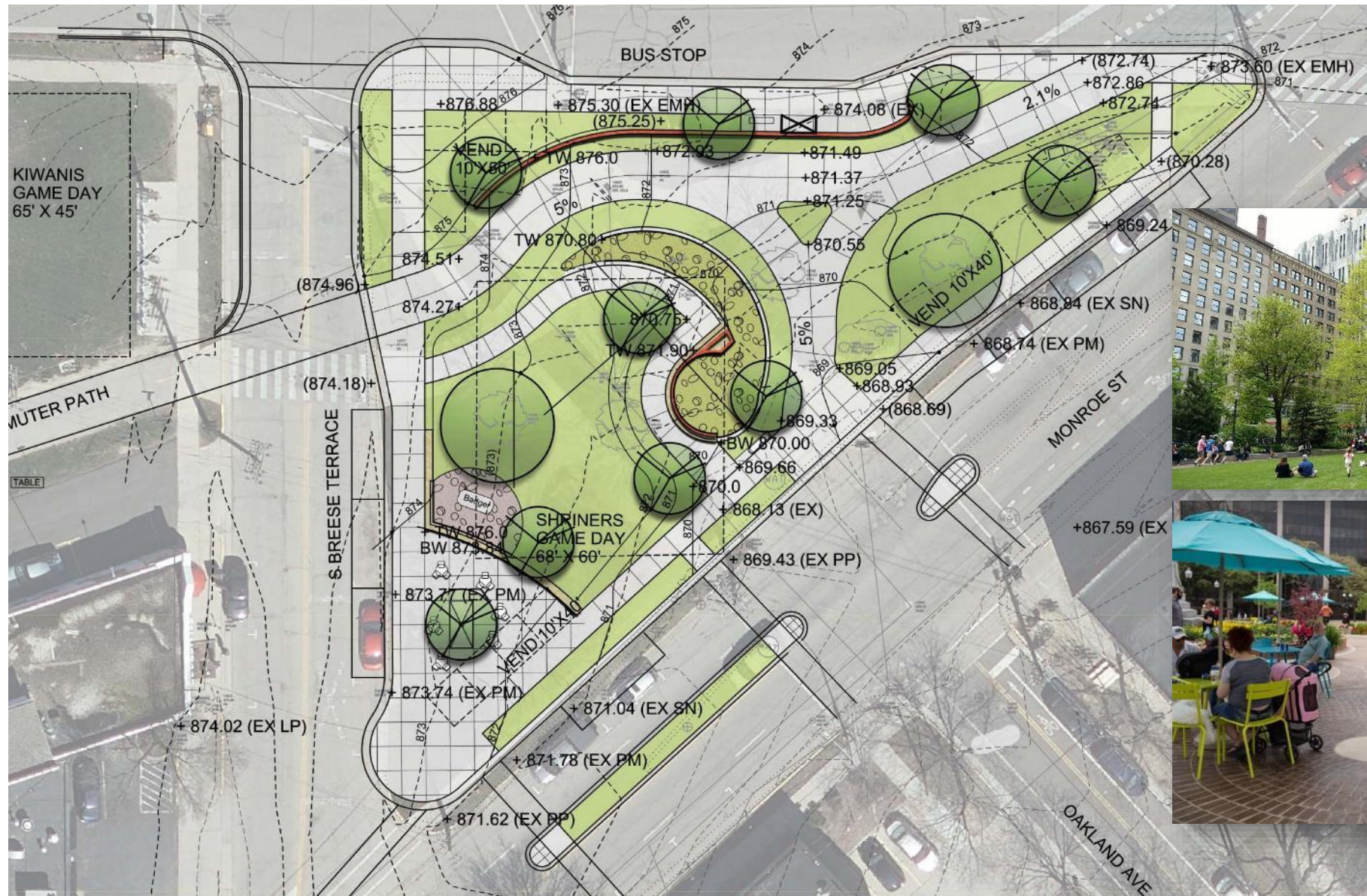


BIKE ROUTE STUDY #2

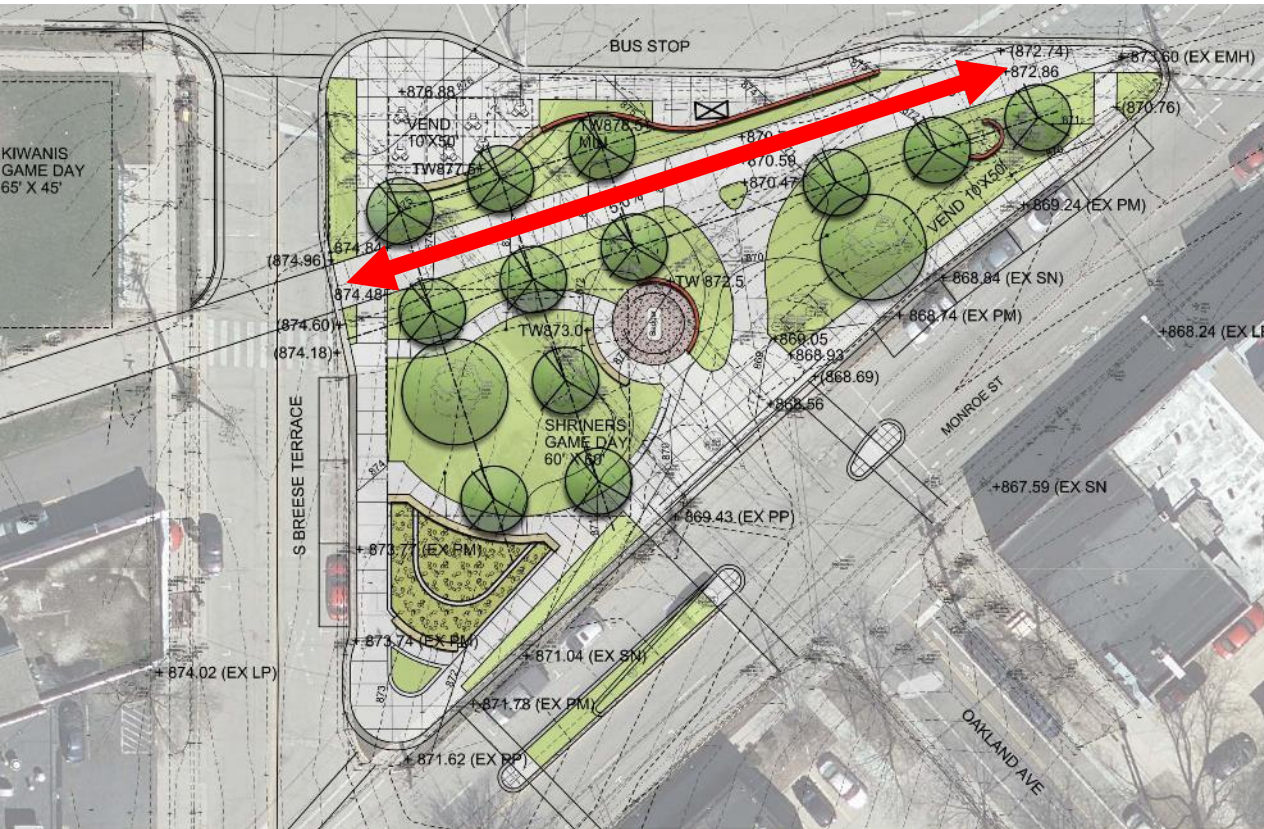
Crazylegs Plaza Alternative #1



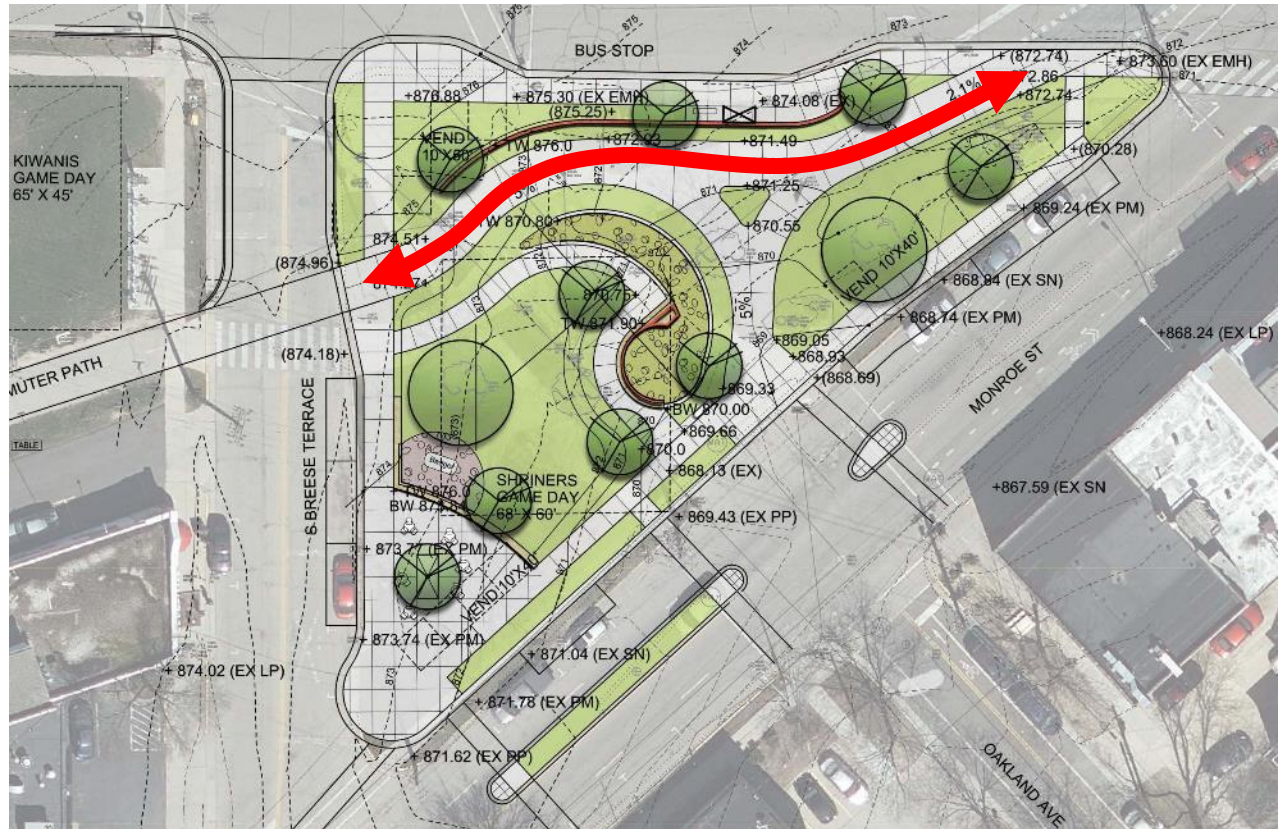
Crazylegs Plaza Alternative #2



Bike Path Layout

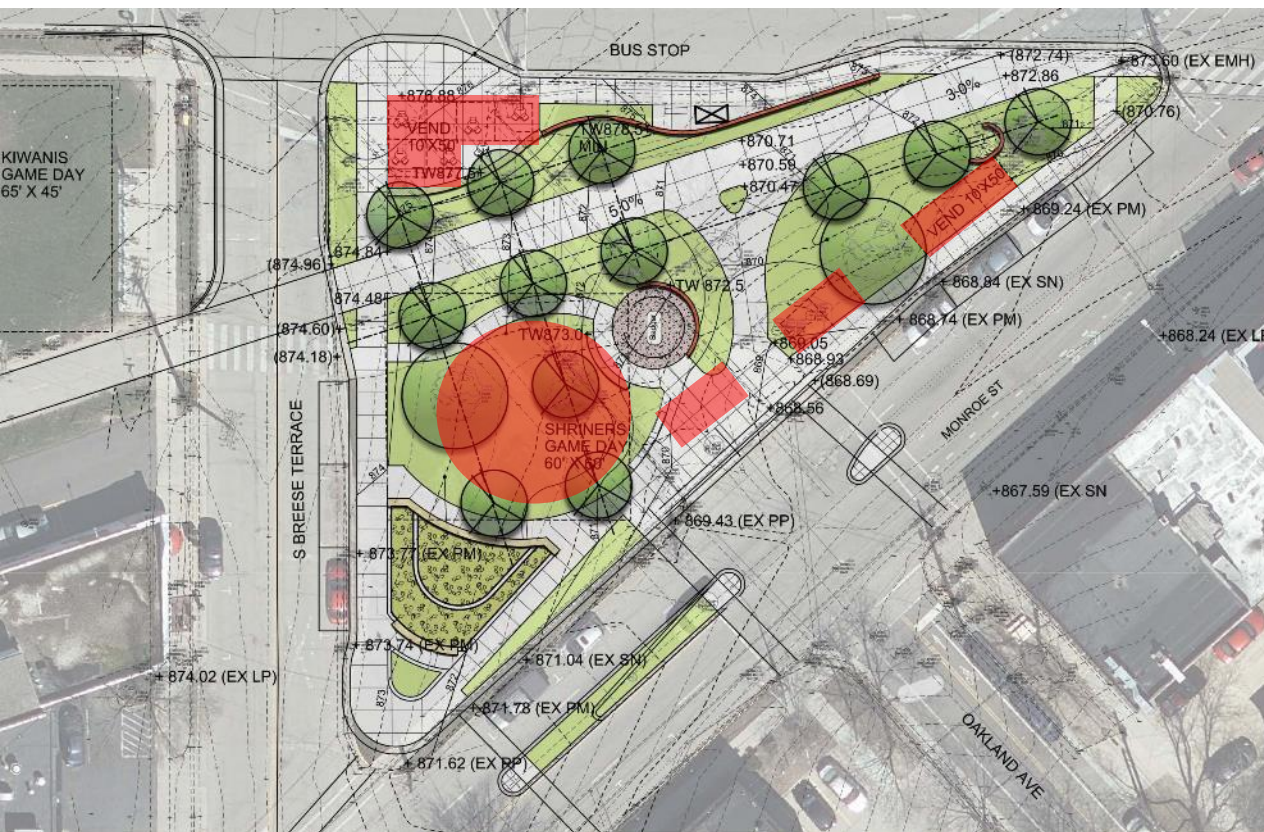


Option #1

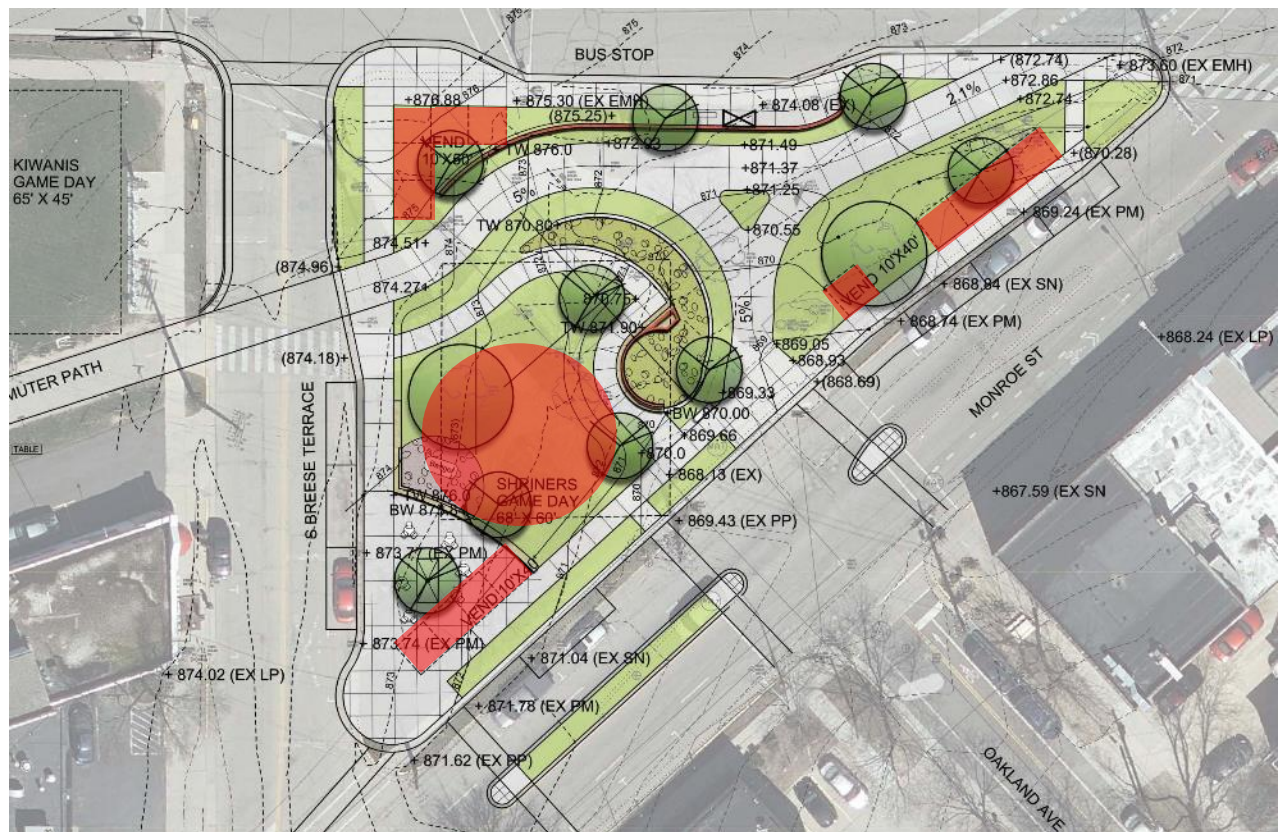


Option #2

Vendor Locations

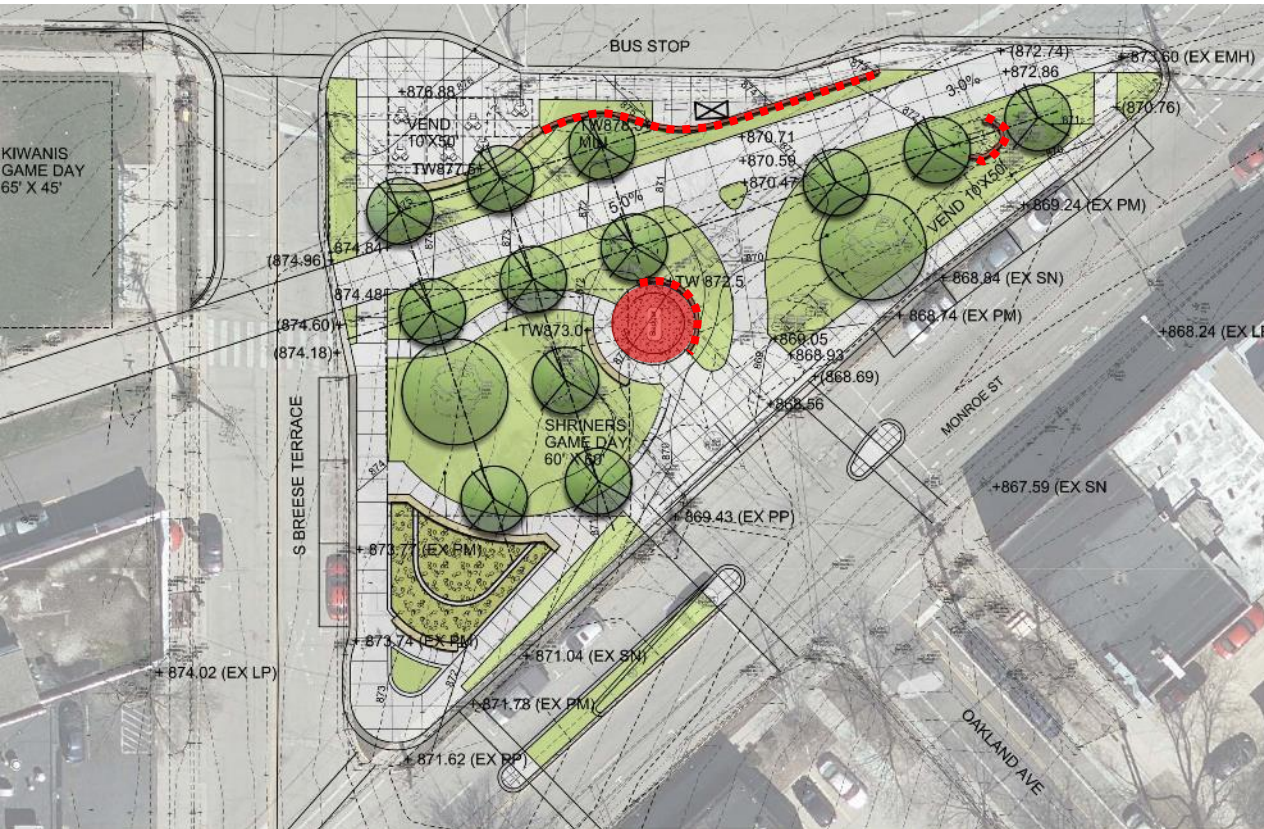


Option #1

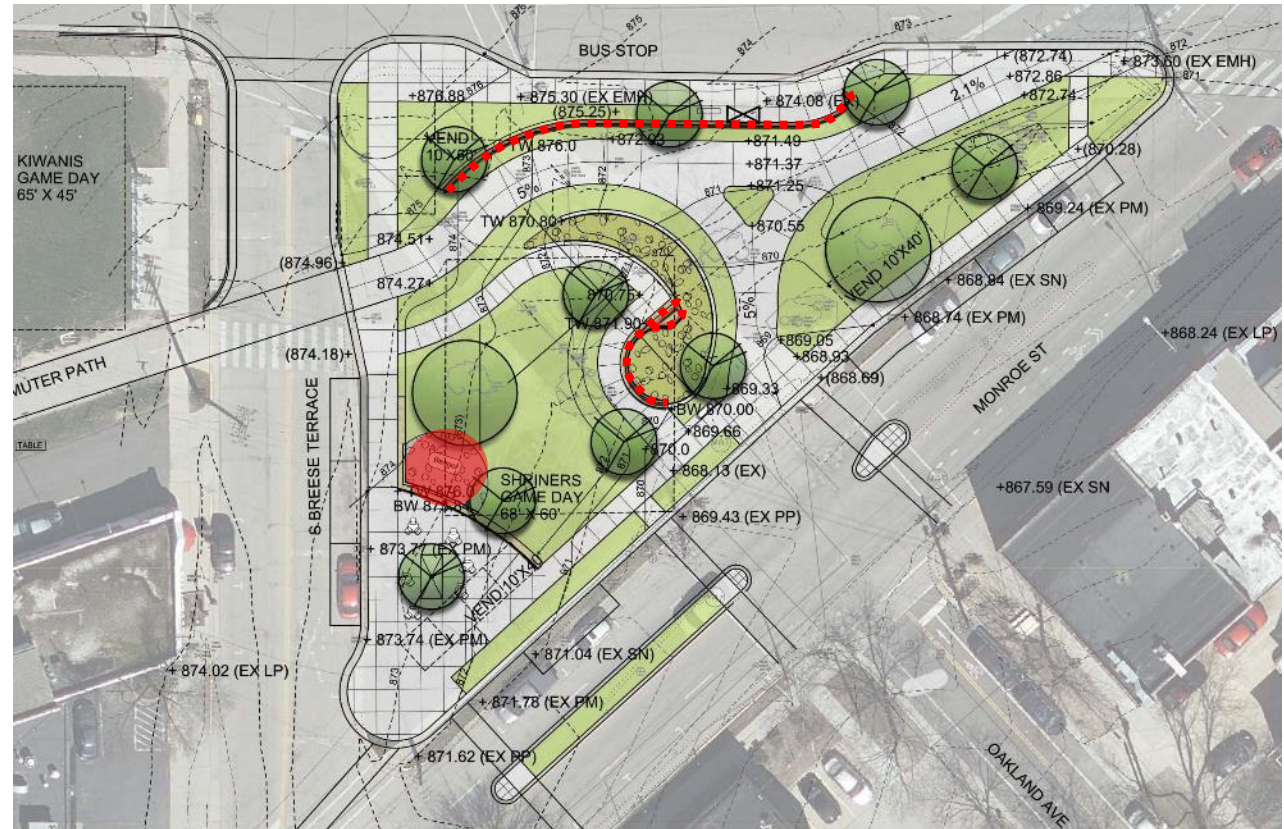


Option #2

Art Opportunities



Option #1



Option #2

Crazylegs Plaza Alternative #1



The image is a landscape architectural site plan for a park area, overlaid on an aerial photograph. The plan shows a central green space with winding paths, several circular tree pits (some labeled "VEND 10'x40'"), and various elevation points (e.g., +876.88, +875.30, +874.08). Key features include a "BUS STOP" at the top, a "SHRINERS GAME DAY 68' x 60'" area in the center, and a "KIWANIS GAME DAY 65' x 45'" area on the left. The plan is bordered by "S BREEZE TERRACE" on the left, "MONROE ST" on the right, and "OAKLAND AVE" at the bottom. Two inset photographs on the right show a grassy area with people and a paved plaza with yellow chairs and a blue umbrella.





Wrap-Up + Takeaways

Next Steps

- October 9th
 - Plans submitted to City for review and project bidding.
- November
 - Final design presentation, date TBD
 - Full project out to bid (Monroe Street, Crazylegs Plaza and Wingra Park entrance)

For More Information:

1. All meeting materials are posted online at City of Madison Engineering:
www.cityofmadison.com/engineering/projects/monroe-street
 - Subscribe to email updates.
 - View survey results, presentations and notes.
2. Alder Eskrich, District 13:
www.cityofmadison.com/council/district13/
 - Subscribe to email updates.
 - Share comments.